



**AUES PROJECT NO. TCS/00704/14**

**CONTRACT NO. MTRC6593-13C –  
WAN CHAI STATION LEE TUNG STREET SUBWAY**

**13<sup>TH</sup> QUARTERLY ENVIRONMENTAL MONITORING  
AND AUDIT (EM&A) SUMMARY REPORT –  
SEPTEMBER 2017 TO NOVEMBER 2017**

**PREPARED FOR  
BUILD KING CONSTRUCTION LIMITED**

**Quality Index**

<b>Date</b>	<b>Reference No.</b>	<b>Prepared By</b>	<b>Approved By</b>
14 March 2018	TCS00704/14/600/R0186v3	 Martin Li Assistant Environmental Consultant	 T.W. Tam Environmental Team Leader

<b>Version</b>	<b>Date</b>	<b>Description</b>
1	17 January 2018	First Submission
2	9 March 2018	Amended against IEC's comment
3	14 March 2018	Amended against IEC's comment

Your Ref:  
Our Ref: 60453136.40032976/2018000124E

**By Email and Post**

MTR Corporation Limited  
Fo Tan Railway House  
No. 9, Lok King Street, Fo Tan  
Shatin, N.T.,  
Hong Kong

Attn.: Mr. Alfa Liu

16 March 2018

Dear Sirs,

**Consultancy Agreement A130-13  
Independent Environmental Checker for CRS and LTS  
LTS - Verification for Tenth Quarterly Environmental Monitoring and Audit (EM&A) Report  
(September 2017 to November 2017) (Report No.: TCS00704/14/600/R0186v3)**

We refer to the 13<sup>th</sup> Quarterly EM&A Report (September 2017 to November 2017) received under cover of the email from the Environmental Team, AUES, dated on 31 January 2018.

Further to our comments provided on 1 February 2018 and 14 March 2018 and subsequent revisions of the Report by AUES on 13 and 15 March 2018, we have no further comment and have verified the captioned report (Report No.: TCS00704/14/600/R0186v3).

Should you have any queries, please feel free to contact the undersigned at 3922 9366.

Yours faithfully  
**AECOM Consulting Services Ltd**



Y. W. Fung  
Independent Environmental Checker

LLMC/wwsc

cc Kaden Consturction Limited (Attn.: Mr. Ronald Fung) via email  
AUES (Attn.: Ms. Nicola Hon) via email

## EXECUTIVE SUMMARY

ES01 This is the 13<sup>th</sup> Quarterly EM&A Summary Report for the Contract No. *MTRC6593-13C – Wan Chai Station Lee Tung Street Subway* (hereinafter “the Project”), which is a Designated Project to be implemented under Environmental Permit EP-444/2012/A (hereinafter referred as “the EP-444/2012/A” or “the EP”), covering the period from **1 September 2017 to 30 November 2017** (hereinafter “Reporting Period”).

## ENVIRONMENTAL MONITORING AND AUDIT ACTIVITIES

ES02 Environmental monitoring activities under the EM&A programme in the Reporting Period are summarized in the following table.

Environmental Aspect	Environmental Monitoring Parameters / Inspection	Reporting Period	
		Number of Monitoring Locations to undertake	Total Occasions
Air Quality	24-hour TSP	1	16
Construction Noise	L <sub>eq(30min)</sub> Daytime	2	26
Site Inspection / Audit	Weekly inspection with ET, the Contractor and RE	--	13
	Monthly joint inspection with ET, the Contractor, RE and IEC	--	3

## BREACHES OF ACTION/LIMIT LEVELS

ES03 In this Reporting Period, monitoring results demonstrated that no exceedance of environmental quality criteria recorded in air quality and construction noise. The summary of breach of environmental performance is shown below.

Environmental Aspect	Monitoring Parameters	Action Level	Limit Level	Event & Action		
				NOE Issued	Investigation	Corrective Actions
Air Quality	24-hour TSP	0	0	0	0	0
Construction Noise	L <sub>eq(30min)</sub> Daytime	0	0	0	0	0

## ENVIRONMENTAL COMPLAINT

ES04 No complaint was received in the Reporting Period.

## NOTIFICATION OF SUMMONS AND SUCCESSFUL PROSECUTIONS

ES05 No environmental summons or successful prosecutions were recorded in the Reporting Period.

## REPORTING CHANGES

ES06 Since dust monitoring station A1 and noise monitoring station N2 at Chiu Hin Mansion were removed on 8 March 2017 as per the apartment owner’s request and are no longer available as dust and noise monitoring station, alternative locations A1a and N2a were proposed to EPD. Dust and noise monitoring originally at A1 and N2 were carried out at the proposed alternative locations A1a and N2a starting from 14 March 2017.

## FUTURE KEY ISSUES

ES07 Construction noise is the key environmental issue during construction work of the Project as there are residential buildings nearby. Noise mitigation measures should be fully implemented in accordance with the EM&A requirement.

ES08 Special attention should be paid on the potential construction dust impact as the construction site is located near the residential area. The Contractor should fully implement the construction dust mitigation measures properly.

ES09 The Contractor should prevent muddy water and other water pollutants via site surface water runoff get into public areas and implement water quality mitigation measures properly. Any discharge water should be strictly complied with wastewater discharge license requirement.

**TABLE OF CONTENTS**

<b>1</b>	<b>INTRODUCTION</b>	<b>1</b>
	PROJECT BACKGROUND	1
	REPORT STRUCTURE	1
<b>2</b>	<b>PROJECT ORGANIZATION AND SUBMISSION</b>	<b>2</b>
	PROJECT ORGANIZATION	2
	SUMMARY OF ENVIRONMENTAL SUBMISSIONS	3
	CONSTRUCTION PROGRESS	4
<b>3</b>	<b>SUMMARY ENVIRONMENTAL IMPACT MONITORING REQUIREMENTS</b>	<b>5</b>
	MONITORING PARAMETERS	5
	MONITORING LOCATIONS	5
	MONITORING FREQUENCY AND PERIOD	5
	MONITORING EQUIPMENT	6
	MONITORING METHODOLOGY	8
	DERIVATION OF ACTION/LIMIT (A/L) LEVELS	9
	DATA MANAGEMENT AND DATA QA/QC CONTROL	9
<b>4</b>	<b>AIR QUALITY MONITORING RESULTS</b>	<b>10</b>
	24-HOUR TSP AIR QUALITY MONITORING RESULTS	10
<b>5</b>	<b>CONSTRUCTION NOISE MONITORING RESULTS</b>	<b>11</b>
	NOISE MONITORING RESULTS	11
<b>6</b>	<b>WASTE MANAGEMENT</b>	<b>12</b>
	GENERAL WASTE MANAGEMENT	12
	RECORDS OF WASTE QUANTITIES	12
<b>7</b>	<b>SITE INSPECTION</b>	<b>13</b>
	FINDINGS / DEFICIENCIES DURING THE REPORTING MONTH	13
<b>8</b>	<b>ENVIRONMENTAL COMPLAINT AND NON-COMPLIANCE</b>	<b>15</b>
	ENVIRONMENTAL COMPLAINT, SUMMONS AND PROSECUTION	15
<b>9</b>	<b>IMPLEMENTATION STATUS OF MITIGATION MEASURES</b>	<b>16</b>
	MITIGATION MEASURES UNDERTAKE IN THE REPORTING PERIOD	16
<b>10</b>	<b>CONCLUSIONS AND RECOMMENDATIONS</b>	<b>17</b>
	CONCLUSION	17
	RECOMMENDATIONS	17

**LIST OF TABLES**

TABLE 2-1	SUBMISSION/SET-UP STATUS OF THE EP REQUIREMENTS
TABLE 2-2	STATUS OF ENVIRONMENTAL LICENSES AND PERMITS
TABLE 3-1	SUMMARY OF THE MONITORING PARAMETERS OF EM&A REQUIREMENTS
TABLE 3-2	AIR AND NOISE MONITORING LOCATIONS
TABLE 3-3	AIR QUALITY MONITORING EQUIPMENT
TABLE 3-4	CONSTRUCTION NOISE MONITORING EQUIPMENT
TABLE 3-5	ACTION AND LIMIT LEVELS FOR AIR QUALITY MONITORING
TABLE 3-6	ACTION AND LIMIT LEVELS FOR CONSTRUCTION NOISE
TABLE 4-1	SUMMARY OF 24-HOUR TSP MONITORING RESULTS
TABLE 5-1	SUMMARY OF NOISE MONITORING RESULTS
TABLE 5-2	ADJUSTMENT OF CONSTRUCTION NOISE LEVEL FOR N1, dB(A)
TABLE 6-1	SUMMARY OF QUANTITIES OF INERT C&D MATERIALS
TABLE 6-2	SUMMARY OF QUANTITIES OF C&D WASTES
TABLE 7-1	SITE OBSERVATIONS
TABLE 8-1	STATISTICAL SUMMARY OF ENVIRONMENTAL COMPLAINTS
TABLE 8-2	STATISTICAL SUMMARY OF ENVIRONMENTAL SUMMONS
TABLE 8-3	STATISTICAL SUMMARY OF ENVIRONMENTAL PROSECUTION
TABLE 9-1	SUMMARY OF ENVIRONMENTAL MITIGATION MEASURES

**LIST OF APPENDICES**

APPENDIX A	PROJECT SITE LAYOUT PLAN
APPENDIX B	ORGANIZATION OF THE PROJECT
APPENDIX C	MASTER CONSTRUCTION PROGRAMME
APPENDIX D	MONITORING LOCATIONS
APPENDIX E	EVENT AND ACTION PLAN
APPENDIX F	GRAPHICAL PLOTS
APPENDIX G	METEOROLOGICAL INFORMATION
APPENDIX H	WASTE FLOW TABLE
APPENDIX I	IMPLEMENTATION SCHEDULE FOR ENVIRONMENTAL MITIGATION MEASURES (ISEMM)

## 1 INTRODUCTION

### PROJECT BACKGROUND

- 1.01 **BUILD KING CONSTRUCTION LIMITED (BKCL)** has been awarded by the MTR Corporation Limited (MTRCL) of the Contract No. *MTRC6593-13C – Wan Chai Station Lee Tung Street Subway* (hereinafter “the Project”), which is a Designated Project to be implemented under Environmental Permit EP-444/2012 (hereinafter referred as “the EP-444/2012” or “the EP”).
- 1.02 The Project includes redevelopment of the Lee Tung Street area to improve pedestrian networking by enhancing the accessibility, connectivity and circulation of human traffic north-south from Queen’s Road East area to Wan Chai MTR Station, and providing a safe and attractive means for pedestrian crossing of Johnston Road. The Project site layout plan is shown in [Appendix A](#) and works under the Project comprise:
- (i) Construction of a pedestrian subway link between Urban Renewal Authority’s Redevelopment at Site H15 (the Development) and Wan Chai Station (WAC);
  - (ii) Construction of two ventilation shafts; and
  - (iii) Modification works of some of the station concourse.
- 1.03 The Project is expected to take about 36 months. In order to effectively implement the environmental protection measures as stipulated in the Particular Specification (PS) of Project, an Environmental Monitoring and Audit Plan (EMAP) which enclosed in the Project Profile (PP) was prepared to guide the setup of the environmental monitoring and audit (EM&A) programme of the Project. The construction of the Project was commenced on 28 August 2014.
- 1.04 Action-United Environmental Services and Consulting (AUES) has been commissioned by Build King Construction Limited as the independent environmental team (ET) to implement the relevant EM&A programme of the Project.
- 1.05 This is the **13<sup>th</sup>** Quarterly EM&A Summary Report presenting the monitoring results and inspection findings in the Reporting Period from **1 September 2017** to **30 November 2017**.

### REPORT STRUCTURE

- 1.06 This Report is structured into the following sections:-

<b>Section 1</b>	<i>Introduction</i>
<b>Section 2</b>	<i>Project Organization</i>
<b>Section 3</b>	<i>Summary of Impact monitoring Requirements</i>
<b>Section 4</b>	<i>Air Quality Monitoring Results</i>
<b>Section 5</b>	<i>Construction Noise Monitoring Results</i>
<b>Section 6</b>	<i>Waste Management</i>
<b>Section 7</b>	<i>Site Inspections</i>
<b>Section 8</b>	<i>Environmental Complaint and Non-Compliance</i>
<b>Section 9</b>	<i>Implementation Status of Mitigation Measures</i>
<b>Section 10</b>	<i>Conclusions and Recommendations</i>

## 2 PROJECT ORGANIZATION AND SUBMISSION

### PROJECT ORGANIZATION

2.01 The project organization is shown in [Appendix B](#). The responsibilities of respective parties are:

#### MTR Corporation Limited (MTRCL)

2.02 MTRCL is the Project Proponent and the Permit Holder of the EP of the development of the Project and will assume overall responsibility for the project. Also, an Independent Environmental Checker (IEC) should be employed by MTRCL to audit the results of the EM&A work conducted by Environmental Team.

#### Environmental Protection Department (EPD)

2.03 EPD is the statutory enforcement body for environmental protection matters in Hong Kong.

#### Resident Engineer (RE)

2.04 The RE is responsible for overseeing the construction works and for ensuring that the works are undertaken by the Contractor in accordance with the specification and contract requirements. The duties and responsibilities of the ER with respect to EM&A are:

- Monitor the Contractor's compliance with Contract Specifications, including the effective implementation and operation of the environmental mitigation measures;
- Inform the Contractor when action is required to reduce impacts in accordance with the Event and Action Plans;
- Participate in site inspections undertaken by the ET; and
- Co-operate with the ET in providing all the necessary information and assistance for completion of the complaint investigation works.

#### Independent Environmental Checker (IEC)

2.05 The IEC should advise the ET and RE on environmental issues related to the project. The IEC should audit from an independent viewpoint on the environmental performance during the construction of the project. The IEC should be a person who has relevant professional qualifications in environmental control and at least 7 years' experience in EM&A and environmental management. The duties and responsibilities of the IEC are:

- Review and audit in an independent, objective and professional manner in all aspects of the EM&A programme;
- Validate and confirm the accuracy of monitoring results, appropriateness of monitoring equipment, monitoring locations with reference to the locations of the nearby sensitive receivers, and monitoring procedures;
- Carry out random sample check and audit on monitoring data and sampling procedures, etc;
- Conduct random site inspection;
- Review the effectiveness of environmental mitigation measures and project environmental performance;
- On an as-need basis, verify and certify the environmental acceptability of the construction methodology (both temporary and permanent works), relevant design plans and submissions under the environmental permit. Where necessary, the IEC should agree in consultation with the ET and the Contractor least impact alternative;
- Check complaint cases and the effectiveness of corrective measures;
- Verify EM&A report certified by the ET Leader; and
- Feedback audit results to RE/ET according to the Event/Action Plan.

#### Environmental Team (ET)

2.06 The ET should conduct the EM&A programme and ensure the Contractor's compliance with the project's environmental performance requirements during construction. The ET should plan, organize and manage the implementation of the EM&A programme and ensure that the EM&A works are undertaken to the required standard.

2.07 The ET should be led and managed by the ET Leader. The ET Leader should have relevant



professional qualifications in environmental control and possess at least 7 years' experience in EM&A. The ET Leader should be responsible for the implementation of the EM&A programmes in accordance with the EM&A requirements. The duties and responsibilities of the ET include:

- Sampling, analysis and statistical evaluation of monitoring parameters;
- Environmental site surveillance;
- Inspection and audit of compliance with environmental protection, and pollution prevention and control regulations;
- Assess the effectiveness of the environmental mitigation measures implemented;
- Monitor compliance with the environmental protection clauses/specifications in the Contract;
- Review construction programme and comment as necessary;
- Review work methodologies which may affect the extent of environmental impact during the construction phase and comment as necessary;
- Complaint investigation, evaluation and identification of corrective measures;
- Liaison with the IEC on all environmental performance matters, and timely submission of all relevant EM&A preform for IEC's approval; and
- Advice to Contractor on environmental improvement, awareness and enhancement matters etc.

**The Contractor**

- 2.08 The Contractor should report to the RE. The duties and responsibilities of the Contractor are:
- Comply with the relevant contract conditions and specifications on environmental protection
  - Participate in the site inspections undertaken by the ET;
  - Provide assistance to ET to carry out monitoring;
  - Provide requested information to the ET in the event of any exceedance in the environmental criteria (Action/Limit levels);
  - Submit proposals on mitigation measures in case of exceedances of Action and Limit levels in accordance with the Event / Action Plans; and
  - Cooperate with the ET in providing all the necessary information and assistance for completion of the complaint investigation works. If mitigation measures are required following the investigation, the Contractor should promptly carry out these measures.

**SUMMARY OF ENVIRONMENTAL SUBMISSIONS**

- 2.09 In according with the EP stipulation, the required documents submission status to EPD for retention as listed below:

**Table 2-1 Submission/Set-up Status of the EP Requirements**

EP Condition	Submission	Status
2.3	Management Organization of Main Construction Companies	Submitted
2.7	Landscape Plan	Submitted
2.9	Fixed Plant Noise Audit Report	Submitted
3.3	Baseline Monitoring Report (TCS00704/14/600/R0010v4)	Submitted
4.2	Internet website	Live

- 2.10 Summary of the relevant permits, licenses, and/or notifications on environmental protection for the Project are presented in **Table 2-2**.

**Table 2-2 Status of Environmental Licenses and Permits**

Item	Description	License/Permit Status
1	Air pollution Control (Construction Dust) Regulation	Notified EPD
2	Chemical Waste Producer Registration - Waste Producers Number	WPN:5213-131-K3099-01 Approved on 14/05/2014
3	Water Pollution Control Ordinance - Discharge License	License no.: WT00022835-2015 Approved on 6/11/2015 Valid to: 31/07/2018
4	Waste Disposal Regulation - Billing Account for Disposal of Construction Waste	Account no.: 7019837 Approved on 30/04/2014

Item	Description	License/Permit Status
4	Waste Disposal Regulation - Billing Account for Disposal of Construction Waste	Account no.: 7019837 Approved on 30/04/2014
5	Construction Noise Permit under Noise Control Ordinance	GW-RS0197-17 obtained on 9 March 2017 Valid from 9 March 2017 to 8 September 2017
		GW-RS0190-17 obtained on 9 March 2017 Valid from 14 March 2017 to 13 September 2017
		GW-RS0512-17 obtained on 9 June 2017 Valid from 13 June 2017 to 10 December 2017

### CONSTRUCTION PROGRESS

2.11 In the Reporting Period, construction activities conducted are listed below. Moreover, the master construction program is enclosed in [Appendix C](#).

#### September 2017

- BS and ABWF Work in Subway

#### October 2017

- BS and ABWF Work in Subway

#### November 2017

- BS and ABWF Work in Subway

### 3 SUMMARY ENVIRONMENTAL IMPACT MONITORING REQUIREMENTS

3.01 The ET will implement the EM&A programme in accordance with the requirements in EMAP. Details of the EM&A programme are presented in the following sub-sections.

#### MONITORING PARAMETERS

3.02 The EM&A impact monitoring program covers the following environmental aspects:

- Air Quality; and
- Construction noise

3.03 A summary of the monitoring parameters is presented in *Table 3-1*:

**Table 3-1 Summary of the Monitoring Parameters of EM&A Requirements**

Environmental Issue	Parameters
Air Quality	<ul style="list-style-type: none"> <li>• 24-hour Total Suspended Particulate (hereinafter ‘24-hour TSP’)</li> <li>• 1-hour TSP monitoring (*)</li> </ul>
Construction Noise	<ul style="list-style-type: none"> <li>• A-weighted equivalent continuous sound pressure level (30min) (hereinafter ‘L<sub>eq(30min)</sub>’ during the normal working hours)</li> </ul>

**Remarks:**

(\*) *In case 24-hour TSP exceed the air quality criteria to be carried out*

#### MONITORING LOCATIONS

3.04 According to Sections 2.3 and 3.4 of the EMAP attached to the Project Profile (Register No. PP-472/2012), construction noise and air quality monitoring location is required to be set up at Hennessy Building and Chiu Hin Mansion. In early May 2014, site visit was conducted to select suitable locations to carry out relevant noise and air monitoring for the EM&A Programme. It was noted that both Hennessy Building and Chiu Hin Mansion are residential buildings and only the 1/F to 2/F of the buildings could be accessed which are commercial premises. It is not possible to set up the monitoring station at upper floors inside the residential apartment which will cause nuisance to the residents. Finally, two locations at lower floor were selected which access were successfully granted by the premises occupiers.

3.05 However, dust monitoring station A1 and noise monitoring station N2 at Chiu Hin Mansion were removed on 8 March 2017 as per the apartment owner’s request and are no longer available as dust and noise monitoring station, alternative locations A1a and N2a were proposed to EPD. Dust and noise monitoring originally at A1 and N2 were carried out at the proposed alternative locations A1a and N2a starting from 14 March 2017. The monitoring stations proposed for the Project are summarized *Table 3-2* and illustrated in *Appendix D*.

**Table 3-2 Air and Noise Monitoring Locations**

Aspect	Monitoring Location	Location ID	Address	Description
Air Quality	Site area	A1a	Southern Playground works area	Within the Project site
Construction Noise	Hennessey Building	N1	2/F floor of Hennessey Building	NSR facing to the Project site
	Chiu Hin Mansion	N2a	Rooftop of Chiu Hin Mansion	NSR facing to the Project site

#### MONITORING FREQUENCY AND PERIOD

3.06 The requirements of impact monitoring are stipulated in the EMAP and presented as follows.

##### Air Quality

3.07 Frequency of impact air quality monitoring is as follows:

- 24-hour TSP Once every 6 days during course of works.

3.08 In case of non-compliance with the air quality criteria, a more frequent monitoring exercise adopting 1-hour TSP monitoring undertaken when the highest dust impact occurs, as specified in the Event and Action Plan, should be conducted within 24 hours after the result is obtained. This additional monitoring should be continued until excessive dust emission or the deterioration in air quality is rectified.

**Construction Noise**

3.09 One set of  $L_{eq(30min)}$  as 6 consecutive  $L_{eq(5min)}$  between 0700-1900 hours on normal weekdays and once every week during course of works. If construction work necessary to carry out at other time periods, i.e. restricted time period (19:00 to 07:00 the next morning and whole day on public holidays) (hereinafter referred as “the restricted hours”), 3 consecutive  $L_{eq(5min)}$  measurement will depended CNP requirements to undertake. Supplementary information for data auditing, statistical results such as  $L_{10}$  and  $L_{90}$  shall also be obtained for reference.

**MONITORING EQUIPMENT**

**Air Quality Monitoring**

3.10 The 24-hour TSP shall be measured by following the standard high volume sampling method as set out in the *Title 40 of the Code of Federal Regulations, Chapter 1 (Part 50), Appendix B*. A direct reading dust meter is used to measure 1-hour TSP air quality in case of non-compliance with air quality criteria of the 24-Hour TSP measurement.

3.11 The filter paper of 24-hour TSP measurement shall be determined by HOKLAS accredited laboratory. All equipment to be used for air quality monitoring is listed in **Table 3-3**.

**Table 3-3 Air Quality Monitoring Equipment**

Equipment	Model
<b>24-hour TSP</b>	
High Volume Air Sampler	TISCH High Volume Air Sampler, HVS Model TE-5170
Calibration Kit	TISCH Model TE-5025A
<b>1- hour TSP</b>	
Portable Dust Meter	TSI Model 8520 DustTrak Aerosol Monitor / Aerocet 531 Handheld Particle Mass Profiler & Counter / Sibata LD-3A Laser Dust Monitor

3.12 According to the EMAP, wind data monitoring equipment shall also be provided and set up for logging wind speed and wind direction near the dust monitoring locations. The equipment installation location shall be proposed by the ET and agreed with the IEC. For installation and operation of wind data monitoring equipment, the following points shall be observed:

- 1) The wind sensors should be installed 10 m above ground so that they are clear of obstructions or turbulence caused by buildings.
- 2) The wind data should be captured by a data logger. The data shall be downloaded for analysis at least once a month.
- 3) The wind data monitoring equipment should be re-calibrated at least once every six months.
- 4) Wind direction should be divided into 16 sectors of 22.5 degrees each.

3.13 Although ET was successful granted HVS installation premises, however, the owners rejected to provide premises for wind data monitoring equipment installation.

3.14 In this situation, the ET proposed alternative methods to obtain representative wind data. Meteorological information as extracted from “the Hong Kong Observatory King’s Park Station” is alternative method to obtain representative wind data. For King’s Park Station, it also can provide the humidity, rainfall, and air pressure and temperature etc. meteorological information. In Hong Kong of a lot development projects, weather information extracted from Hong Kong Observatory is common alternative method if weather station installation not allowed.

- 3.15 Although there are other closer weather stations, King's Park Station was selected as it is the nearest weather station that measures all the relevant parameters mentioned above. Moreover, the ET has compared the data among the stations, and concluded that there is minimal difference between meteorological data collected at the King's Park station and other stations.

**Construction Noise Monitoring**

- 3.16 Sound level meter in compliance with the International Electrotechnical Commission Publications 651: 1979 (Type 1) and 804: 1985 (Type 1) specifications shall be used for carrying out the noise monitoring. The sound level meter shall be checked using an acoustic calibrator. The wind speed shall be checked with a portable wind speed meter capable of measuring the wind speed in m/s. Furthermore, an acoustic calibrator and sound level meter shall be calibrated yearly.
- 3.17 Noise monitoring equipment to be used for monitoring is listed in **Table 3-4**.

**Table 3-4 Construction Noise Monitoring Equipment**

Equipment	Model
Integrating Sound Level Meter	B&K Type 2238 / Rion NL- 31/52
Calibrator	Rion NC-73/74 / Cesva CB-5 / B&K Type 4231
Portable Wind Speed Indicator	Testo Anemometer

**MONITORING METHODOLOGY**

**24-hour TSP**

- 3.18 The equipment used for 24-hour TSP measurement listed in Table 3-3, is a Tisch Environmental, Inc. Model TE-5170 TSP high volume air sampling system, which complied with EPA Code of Federal Regulation, Appendix B to Part 50. The High Volume Air Sampler (HVS) consists of the following:
  - a. An anodized aluminum shelter;
  - b. A 8”x10” stainless steel filter holder;
  - c. A blower motor assembly;
  - d. A continuous flow/pressure recorder;
  - e. A motor speed-voltage control/elapsed time indicator;
  - f. A 7-day mechanical timer, and
  - g. A power supply of 220v/50 hz
- 3.19 The HVS is calibrated in accordance with the manufacturer’s instruction using the NIST-certified standard calibrator (Tisch Calibration Kit Model TE-5028A). The 24-hour TSP Monitoring using the HVS is also processed in accordance with the manufacturer’s Operations Manual.
- 3.20 24-hour TSP is collected by the ET on filters of HVS and quantified by a local HOKLAS accredited laboratory, ALS Technichem (HK) Pty Ltd (ALS), upon receipt of the samples. The ET keeps all the sampled 24-hour TSP filters in normal air conditioned room conditions, i.e. 70% HR (Relative Humidity) and 25°C, for six months prior to disposal.

**Noise**

- 3.21 Sound level meter listed in **Table 3-4** comply with the International Electrotechnical Commission Publications 651: 1979 (Type 1) and 804: 1985 (Type 1) specifications, as recommended in Technical Memorandum (TM) issued under the Noise Control Ordinance (NCO), which was used for baseline noise monitoring.
- 3.22 The noise measurement is performed with the meter set to FAST response and on the A-weighted equivalent continuous sound pressure level (Leq). Leq(30min) in six consecutive Leq(5 min) measurements were used as the monitoring parameter.
- 3.23 During monitoring, the sound level meter mounted at the monitoring locations and oriented such that the microphone pointed to the site with the microphone facing perpendicular to the line of sight. The windshield was fitted for the measurement. For the monitoring, N1 and N2 are conducted 1 m from the exterior of the building façade.
- 3.24 Prior construction noise measurement, the accuracy of the sound level meter checked using an acoustic calibrator generating a known sound pressure level at a known frequency. The

calibration level from before and after the noise measurement agrees to within 1.0dB.

#### DERIVATION OF ACTION/LIMIT (A/L) LEVELS

- 3.25 The baseline results form the basis for determining the environmental acceptance criteria for the impact monitoring. According to EMAP, the air quality and construction noise criteria were set up, namely Action and Limit levels are listed in *Tables 3-5* and *3-6*.

**Table 3-5 Action and Limit Levels for Air Quality Monitoring**

Monitoring Station	Action Level ( $\mu\text{g}/\text{m}^3$ )		Limit Level ( $\mu\text{g}/\text{m}^3$ )	
	1-hour TSP	24-hour TSP	1-hour TSP	24-hour TSP
A1	290	162	500	260

**Table 3-6 Action and Limit Levels for Construction Noise**

Monitoring Station	0700-1900 hours on normal weekdays	
	Action Level	Limit Level
N1 and N2	When one documented complaint is received	75 dB(A)

*Note: If works are to be carried out during restricted hours, the conditions stipulated in the construction noise permit issued by the NCA have to be followed.*

- 3.26 Should non-compliance of the environmental quality criteria occurs, remedial actions will be triggered according to the Event and Action Plan which presented in [Appendix E](#).

#### DATA MANAGEMENT AND DATA QA/QC CONTROL

- 3.27 The all monitoring data were handled by the ET's in-house data recording and management system.
- 3.28 The monitoring data recorded in the equipment were downloaded directly from the equipment at the end of each monitoring day. The downloaded monitoring data were input into a computerized database properly maintained by the ET. The laboratory results were input directly into the computerized database and checked by personnel other than those who input the data.
- 3.29 For monitoring parameters that require laboratory analysis, the local laboratory shall follow the QA/QC requirements as set out under the HOKLAS scheme for the relevant laboratory tests.



#### 4 AIR QUALITY MONITORING RESULTS

4.01 In the Reporting Period, 16 occasions of 24-hours TSP monitoring was carried out at the proposed location A1.

##### 24-HOUR TSP AIR QUALITY MONITORING RESULTS

4.02 The monitoring results are summarized in *Table 4-1*. The relevant graphical plots are shown in *Appendix F*.

**Table 4-1 Summary of 24-hour TSP Monitoring Results**

Date	A1a – Southern Playground works area	Action Level (µg/m <sup>3</sup> )	Limit Level (µg/m <sup>3</sup> )
	24-hour TSP (µg/m <sup>3</sup> )		
5-Sep-17	63	162	260
11-Sep-17	37		
16-Sep-17	24		
22-Sep-17	27		
28-Sep-17	18		
3-Oct-17	51		
9-Oct-17	40		
14-Oct-17	52		
20-Oct-17	69		
26-Oct-17	102		
1-Nov-17	72		
7-Nov-17	76		
13-Nov-17	64		
18-Nov-17	52		
24-Nov-17	61		
30-Nov-17	58		
Average (Range)	<b>54 (18 - 102)</b>		

4.03 As shown in *Table 4-1*, 24-hour TSP monitoring results are fluctuated below Action/ Limit Levels.

4.04 In the Reporting Period, dust concentration of the minimum was measured on **28 September 2017** and maximum was measured on **26 October 2017**. Moreover, Average value in the Reporting Period is **54 µg/m<sup>3</sup>**.

4.05 The summary of meteorological information during the Reporting Period is presented in *Appendix G*.



## 5 CONSTRUCTION NOISE MONITORING RESULTS

5.01 In the Reporting Period, 26 occasions noise measurement were conducted at N1, N2 and N2a. The sound level meter was set in 1m from the exterior of the building façade at N1 and N2a. Therefore, no façade correction (+3dB(A)) is added according to acoustical principles and EPD guidelines. However, a correction of +5dB(A) has been added to the noise monitoring result which carried out at the newly proposed location N2a as an adjustment to take into account the difference of slant distance between the construction site and newly proposed rooftop location and that between the construction site and the nearest NSR at N2.

### NOISE MONITORING RESULTS

5.02 The noise measurement results at N1 and N2a are listed in *Table 5-1*. The relevant graphical plots are shown in *Appendix F*.

**Table 5-1 Summary of Noise Monitoring Results**

Measurement Date	$L_{eq30min}$ (dB(A))	
	N1 2/F floor of Hennessey Building	N2a Rooftop of Chiu Hin Mansion (*Corrected $L_{eq30min}$ )
1-Sep-17	70	73
8-Sep-17	70	73
15-Sep-17	70	73
22-Sep-17	70	73
29-Sep-17	71	73
6-Oct-17	71	73
13-Oct-17	71	73
20-Oct-17	70	73
27-Oct-17	70	73
3-Nov-17	71	74
9-Nov-17	73	75
17-Nov-17	75	71
24-Nov-17	72	71
<b>Limit Level of Construction Noise</b>	<b>75 dB(A)</b>	

\* A correction of +5dB(A) has been added to the noise monitoring result which carried out at the newly proposed location N2a as an adjustment to take into account the difference of slant distance between the construction site and newly proposed rooftop location and that between the construction site and the nearest NSR at N2.

5.03 Referred to above tables, no noise measurement exceedance was recorded at both N1 and N2a. Furthermore, there is no noise complaint (Action Level exceedance) received by the MTRCL and Contractor or EPD in the Reporting Period. The meteorological data during the impact monitoring days are shown in *Appendix G*.

## 6 WASTE MANAGEMENT

### GENERAL WASTE MANAGEMENT

6.01 Waste management was carried out by an on-site Environmental Officer or an Environmental Supervisor from time to time.

### RECORDS OF WASTE QUANTITIES

6.02 All types of waste arising from the construction work are classified into the following:

- Construction & Demolition (C&D) Material;
- Chemical Waste;
- General Refuse; and
- Excavated Soil.

6.03 The quantities of waste for disposal in this Reporting Period are summarized in *Tables 6-1* and *6-2* and the Summary of Waste Flow Table is shown in *Appendix H*.

**Table 6-1 Summary of Quantities of Inert C&D Materials**

Type of Waste	Quantity			Disposal Location
	Sep 17	Oct 17	Nov 17	
Total C&D Materials (Inert) (m <sup>3</sup> )	0	0	0	-
Reused in this Contract (Inert) (m <sup>3</sup> )	0	0	0	-
Reused in other Projects (Inert) (m <sup>3</sup> )	0	0	0	-
Disposal as Public Fill (Inert) (m <sup>3</sup> )	129.3	55.32	16.31	TKO 137

**Table 6-2 Summary of Quantities of Non-Inert C&D Wastes**

Type of Waste	Quantity			Disposal Location
	Sep 17	Oct 17	Nov 17	
Recycled Metal (m <sup>3</sup> )	0	0	0	-
Recycled Paper / Cardboard Packing (m <sup>3</sup> )	0	0	0	-
Recycled Plastic (m <sup>3</sup> )	0	0	0	-
Chemical Wastes (m <sup>3</sup> /L)	0	0	0	-
General Refuses (m <sup>3</sup> )	10.51	4.35	4.98	SENT Landfill

6.04 In the Reporting Period, effluent generated from the Project was discharged in accordance with the Wastewater Discharge License.

## 7 SITE INSPECTION

7.01 According to the EMAP, weekly site inspection undertaken by the RE, ET and the Contractor to confirm the environmental performance. In the reporting Period, total of thirteen (13) occasions of weekly site inspection were undertaken.

### FINDINGS / DEFICIENCIES DURING THE REPORTING MONTH

7.02 During September 2017, **five (5)** occasions of weekly site inspections to evaluate site environmental performance was carried out by the RE, ET and the Contractor on **1, 8, 15, 22 and 29 September 2017** and the IEC was joined the site inspection on **29 September 2017**. No non-compliance was noted. However, two (2) observations and two (2) reminders were recorded by the ET.

7.03 During October 2017, **four (4)** occasions of weekly site inspections to evaluate site environmental performance was carried out by the RE, ET and the Contractor on **6, 13, 20 and 27 October 2017** and the IEC was joined the site inspection on **27 October 2017**. No non-compliance was noted. However, there (3) observations were recorded by the ET.

7.04 During November 2017, **four (4)** occasions of weekly site inspections to evaluate site environmental performance was carried out by the RE, ET and the Contractor on **3, 10, 17 and 24 November 2017** and the IEC was joined the site inspection on **24 November 2017**. No non-compliance was noted. However, Two (2) observations and one (1) reminder were recorded by the ET.

7.05 The detailed findings / deficiencies and follow-up in the Reporting Period listed in **Table 7-1**.

**Table 7-1 Site Observations**

Date	Findings / Deficiencies	Follow-Up Status
11 August 2017	<ul style="list-style-type: none"> <li>Accumulation of waste was observed. The Contractor was advised to dispose it regularly.</li> </ul>	<ul style="list-style-type: none"> <li>Accumulation of waste was removed. Last observation closed.</li> </ul>
25 August 2017	<ul style="list-style-type: none"> <li>The Contractor was advised to place chemical container inside the drip tray.</li> <li>Construction materials were observed near tree protection zone. The Contractor was advised to remove it</li> </ul>	<ul style="list-style-type: none"> <li>Chemical containers were placed inside drip tray. Last observation closed.</li> <li>Construction materials were removed from tree protection zone. Last observation closed.</li> </ul>
1 September 2017	<ul style="list-style-type: none"> <li>Construction waste was observed on the ground. The Contractor was advised to perform housekeeping.</li> </ul>	<ul style="list-style-type: none"> <li>Construction waste was removed. Last observation closed.</li> </ul>
8 September 2017	<ul style="list-style-type: none"> <li>Waste water without treatment was observed. The Contractor was advised to treat the waste water before discharge.</li> </ul>	<ul style="list-style-type: none"> <li>Treatment for waste water was observed on site. Last observation closed.</li> </ul>
15 September 2017	<ul style="list-style-type: none"> <li>The Contractor was reminded to ensure no muddy trail at site entrance.</li> <li>The Contractor was reminded to avoid surface runoff out of site boundary.</li> </ul>	<ul style="list-style-type: none"> <li>Not required for reminder.</li> <li>Not required for reminder.</li> </ul>
22 September 2017	<ul style="list-style-type: none"> <li>No adverse environmental issue was observed during site inspection.</li> </ul>	<ul style="list-style-type: none"> <li>NIL.</li> </ul>
29 September 2017	<ul style="list-style-type: none"> <li>No adverse environmental issue was observed during site inspection.</li> </ul>	<ul style="list-style-type: none"> <li>NIL.</li> </ul>
6 October 2017	<ul style="list-style-type: none"> <li>No adverse environmental issue was observed during site inspection.</li> </ul>	<ul style="list-style-type: none"> <li>NIL.</li> </ul>
13 October 2017	<ul style="list-style-type: none"> <li>Rock breaking work without dust mitigation measures implemented was</li> </ul>	<ul style="list-style-type: none"> <li>Water spraying was implemented during rock</li> </ul>

Date	Findings / Deficiencies	Follow-Up Status
	observed. The Contractor should provide dust mitigation measures such as water spraying during the rock breaking work to reduce dust generation.	breaking work. Last observation closed.
20 October 2017	<ul style="list-style-type: none"> <li>• No adverse environmental issue was observed during site inspection.</li> </ul>	<ul style="list-style-type: none"> <li>• NIL.</li> </ul>
27 October 2017	<ul style="list-style-type: none"> <li>• Stagnant water cumulated inside the drip tray. The Contractor was advised clean-up it.</li> <li>• The contractor was advised to place chemical container inside the drip tray.</li> </ul>	<ul style="list-style-type: none"> <li>• Stagnant water in the drip tray was removed. Last observation closed.</li> <li>• Chemical containers were placed inside drip tray and cover properly. Last observation closed.</li> </ul>
3 November 2017	<ul style="list-style-type: none"> <li>• No adverse environmental issue was observed during site inspection.</li> </ul>	<ul style="list-style-type: none"> <li>• Nil</li> </ul>
10 November 2017	<ul style="list-style-type: none"> <li>• No adverse environmental issue was observed during site inspection.</li> </ul>	<ul style="list-style-type: none"> <li>• Nil</li> </ul>
17 November 2017	<ul style="list-style-type: none"> <li>• No adverse environmental issue was observed during site inspection.</li> </ul>	<ul style="list-style-type: none"> <li>• Nil</li> </ul>
24 November 2017	<ul style="list-style-type: none"> <li>• Open cement bags were observed on the site. The Contractor was advised to cover it with tarpaulin sheet to avoid dust emission.</li> <li>• Stagnant water was observed on the site. The Contractor was advised to clean it.</li> <li>• The Contractor was reminded to spray water regularly to avoid dust emission.</li> </ul>	<ul style="list-style-type: none"> <li>• To be followed up.</li> <li>• To be followed up.</li> <li>• To be followed up.</li> </ul>

7.06 No site inspection was undertaken by external parties i.e. EPD in the Reporting Period.

## 8 ENVIRONMENTAL COMPLAINT AND NON-COMPLIANCE

### ENVIRONMENTAL COMPLAINT, SUMMONS AND PROSECUTION

8.01 The environmental complaint about noise nuisance arising from the construction site of Wan Chai Station Lee Tung Street Subway near Hennessy Road on 13 March 2017 was received by ET on 26 May 2017 and the investigation report had been submitted.

8.02 No summons and prosecution are received by either the EPD or MTRCL or the Main Contractor. The statistical summary table of environmental complaint is presented in *Tables 8-1, 8-2 and 8-3*.

**Table 8-1 Statistical Summary of Environmental Complaints**

Reporting Period	Environmental Complaint Statistics					
	Frequency	Cumulative	Complaint Nature			
			Air	Noise	Water	Others
1– 30 September 2017	0	0	NA	NA	NA	NA
1– 31 October 2017	0	0	NA	NA	NA	NA
1– 30 November 2017	0	0	NA	NA	NA	NA

**Table 8-2 Statistical Summary of Environmental Summons**

Reporting Period	Environmental Summons Statistics					
	Frequency	Cumulative	Air	Noise	Water	Others
1– 30 September 2017	0	0	NA	NA	NA	NA
1– 31 October 2017	0	0	NA	NA	NA	NA
1– 30 November 2017	0	0	NA	NA	NA	NA

**Table 8-3 Statistical Summary of Environmental Prosecution**

Reporting Period	Environmental Prosecution Statistics					
	Frequency	Cumulative	Air	Noise	Water	Others
1– 30 September 2017	0	0	NA	NA	NA	NA
1– 31 October 2017	0	0	NA	NA	NA	NA
1– 30 November 2017	0	0	NA	NA	NA	NA

**9 IMPLEMENTATION STATUS OF MITIGATION MEASURES**

9.01 The environmental mitigation measures that recommended in the Implementation Schedule for Environmental Mitigation Measures (ISEMM) in the EMAP covered the issues of dust, noise, water and waste and they are summarized presented in [Appendix I](#).

**MITIGATION MEASURES UNDERTAKE IN THE REPORTING PERIOD**

9.02 In the Reporting Period, the environmental mitigation measures implemented by the Contractor are listed in [Table 9-1](#).

**Table 9-1 Summary of Environmental Mitigation Measures**

Issues	Environmental Mitigation Measures
Air Quality	<ul style="list-style-type: none"> <li>• Regular watering to reduce dust emissions from all exposed site surface, particularly during dry weather;</li> <li>• Frequent watering for particularly dusty construction areas and areas close to air sensitive receivers;</li> <li>• Cover all excavated or stockpile of dusty material by impervious sheeting or sprayed with water to maintain the entire surface wet;</li> <li>• Public areas around the site entrance/exit had been kept clean and free from dust; and</li> <li>• Tarpaulin covering of any dusty materials on a vehicle leaving the site.</li> </ul>
Noise	<ul style="list-style-type: none"> <li>• Good site practices to limit noise emissions at the sources;</li> <li>• Use of quiet plant and working methods;</li> <li>• Use of site hoarding or other mass materials as noise barrier to screen the working site;</li> <li>• Use of shrouds/temporary noise barriers to screen noise from relatively static PMEs; and</li> <li>• Limiting as use one construction plant within worksite, where practicable.</li> </ul>
Water Quality	<ul style="list-style-type: none"> <li>• Wastewater were appropriately treated by treatment facilities;</li> <li>• Drainage channels were provided to convey run-off into the treatment facilities; and</li> <li>• Drainage systems were regularly and adequately maintained.</li> </ul>
Waste and Chemical Management	<ul style="list-style-type: none"> <li>• Excavated material should be reused on site as far as possible to minimize off-site disposal. Scrap metals or abandoned equipment should be recycled if possible;</li> <li>• Waste arising should be kept to a minimum and be handled, transported and disposed of in a suitable manner;</li> <li>• The Contractor should adopt a trip ticket system for the disposal of C&amp;D materials to any designed public filling facility and/or landfill; and</li> <li>• Chemical waste should be handled in accordance with the Code of Practice on the Packaging, Handling and Storage of Chemical Wastes.</li> </ul>
Landscape and Visual	<ul style="list-style-type: none"> <li>• Clear demarcation of works area to prevent damages to existing trees in close proximity;</li> <li>• Protection of all trees planned to be retained onsite;</li> <li>• Preserving all affected trees by transplanting where practical. Tree transplanting application and tree removal application shall be submitted for approval in accordance with ETWB TCW 3/2006; and</li> <li>• Screening of construction works by hoardings/noise barriers around Works area in visually unobtrusive colours.</li> </ul>
General	<ul style="list-style-type: none"> <li>• The site was generally kept tidy and clean.</li> </ul>

9.03 In addition, mosquito control measures to prevent mosquito breeding on site are conducted in the Reporting Period.

## **10 CONCLUSIONS AND RECOMMENDATIONS**

10.01 This is the **13<sup>th</sup>** Quarterly EM&A Summary Report presenting the monitoring results and inspection findings in the Reporting Period from **1 September 2017** to **30 November 2017**.

### **CONCLUSION**

10.02 In the Reporting Period, **16** occasions of 24-hours TSP monitoring was conducted at the proposed Monitoring Location A1. The monitoring results are all below the Action/ Limit Level. No Notifications of Exceedances (NOEs) or the associated corrective actions were therefore issued.

10.03 In the Reporting Period, a total of **26** occasions of noise measurement was conducted at N1 and N2a and no noise measurement result is higher than 75dB(A) was recorded. Furthermore, no noise complaint (which is an Action Level exceedance) was received.

10.04 One noise complaint and no notification of summons or successful prosecution was received in the Reporting Period.

10.05 A total of thirteen (13) occasions of weekly site inspections to evaluate site environmental performance was carried out by the RE, ET and the Contractor in the Reporting Period. Moreover, the IEC attended the site inspections on **29 September 2017**, **27 October 2017** and **24 November 2017**. In the Reporting Period, no non-compliance was noted and total seven (7) observations and three (3) reminders were recorded by the ET. Minor deficiencies found in the weekly site inspection were in general rectified within the specified deadlines. The environmental performance of the Project was considered as satisfactory in this reporting period.

10.06 In the Reporting Period, no joint site inspection was attended by external parties i.e. EPD.

### **RECOMMENDATIONS**

10.07 Construction noise is the key environmental issue during construction work of the Project as there are residential buildings nearby. Noise mitigation measures should be fully implemented in accordance with the EM&A requirement.

10.08 Also, special attention should be paid on the potential construction dust impact as the construction site is located near the residential area. The Contractor should fully implement the construction dust mitigation measures properly.

10.09 The Contractor should also prevent muddy water and other water pollutants via site surface water runoff get into public areas. Any discharge water should be strictly complied with wastewater discharge license requirement. As a reminder, water quality mitigation measures should be properly implemented in accordance with the EM&A requirement.

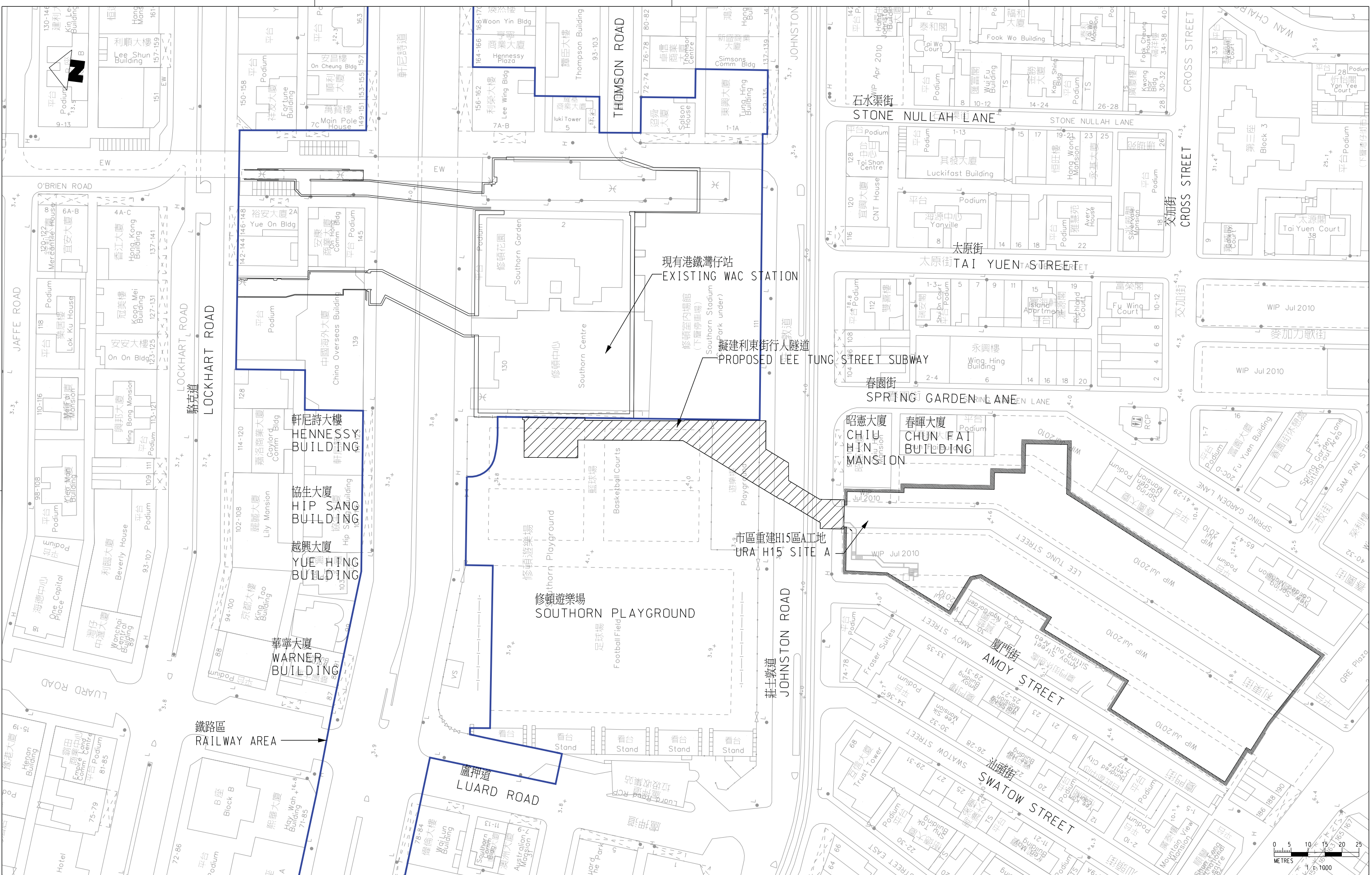
10.10 As a reminder, the Contractor should be regular checking and maintenance wastewater treatment facilities ensure compliance with the currently Discharge License stipulation. A warning sign should be provided all the retained trees as remind the workers prevent scratch the trees. In addition, mosquito control should be kept to prevent mosquito breeding on site.

## **Appendix A**

### **Project Site Layout Plan**



C:\ProgramData\Bentley\MicroStation\18\USELECT\series\WorkSpace\System\pctrig\MTR\_PDF\_BW\_COL\_300DP.plt  
 PLOT DRW: PRINTED BY: 20/06/2012 16:56  
 MODELNAME: J:\282435\REPORT\ENV\202056\NEX1050\_2.7A\_000.dgn



REV	DESCRIPTION	BY	DATE	APPROVED	REV	DESCRIPTION	BY	DATE	APPROVED
D	GENERAL REVISION		16MAY12	AFK	HD				
C	GENERAL REVISION		12AUG11	AFK	HD				
B	GENERAL REVISION		18JUL11	AFK	HD				
A	PROJECT PROFILE		04MAY11	AFK	HD				

DRAWN	HO
DESIGNED	BW
CHECKED	BL
APPROVED	AFK
DATE	04MAY2011

ORIGINATOR  
 Mott MacDonald  
 20/F Two Landmark East  
 100 Hoi Yung Street  
 Kowloon  
 HONG KONG  
 T +852 2808 2572  
 F +852 2807 1823  
 www.mottmacdonald.com.hk

TITLE  
**WAC STATION LEE TUNG STREET SUBWAY**

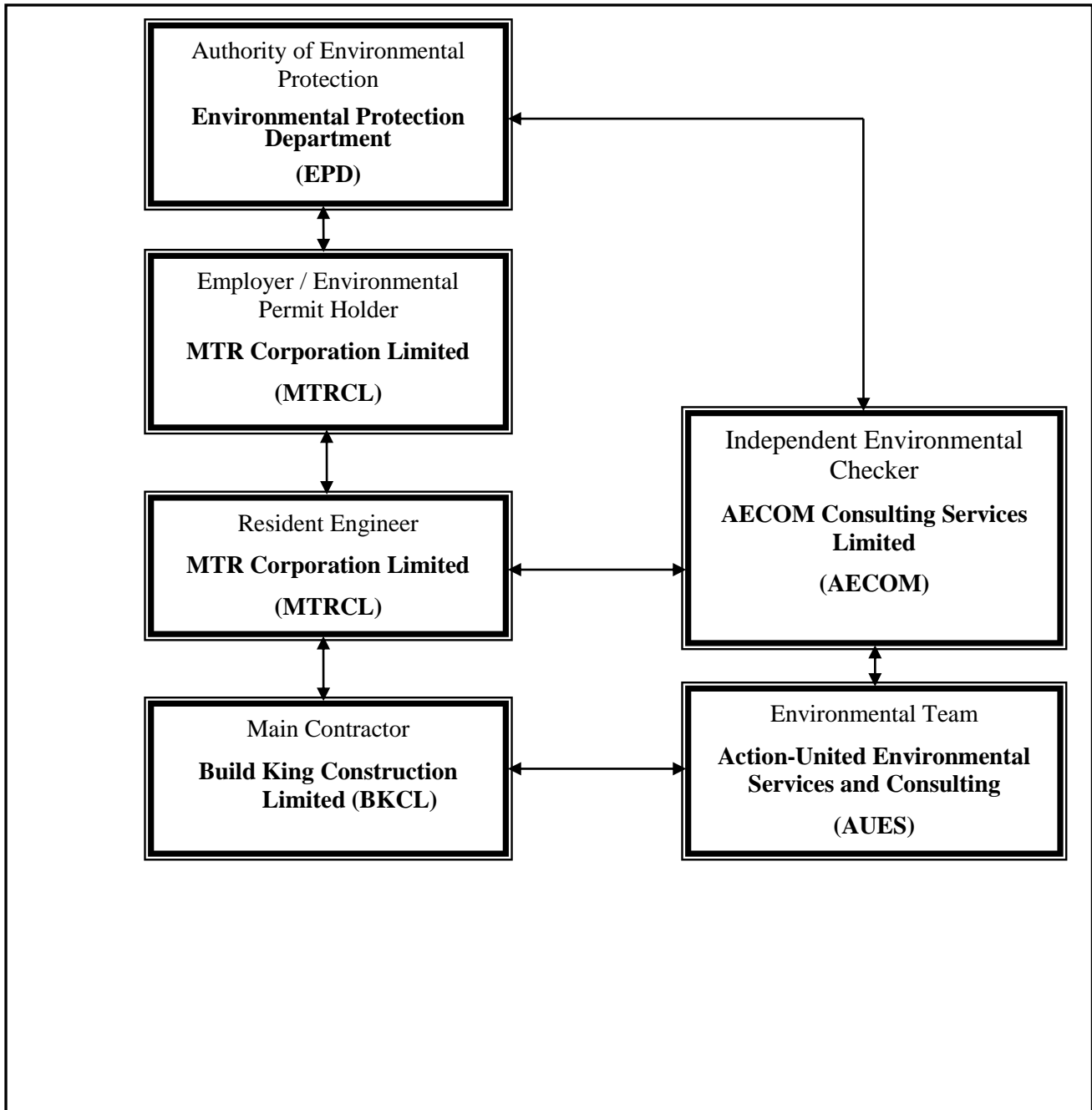
TITLE  
**CONSULTANCY AGREEMENT NO. NEX/1050  
 DETAILED DESIGN FOR LEE TUNG STREET SUBWAY  
 SITE LOCATION PLAN  
 施工位置圖**

SCALE 1:1000 (A3) DRAWING NO. NEX1050/2.7A/001 REV. D

CADD REF. NEX1050\_2.7A\_001D.dgn

## **Appendix B**

### **Organization of the Project**



**Contact Details of Key Personnel for the Project**

<b>Organization</b>	<b>Project Role</b>	<b>Name of Key Staff</b>	<b>Tel No.</b>	<b>Fax No.</b>
MTRCL	Resident Engineer	Mr. Raymond Lee	3547 0002	3547 0090
AECOM	Independent Environmental Checker	Mr. Y. W. Fung	3922 9366	3922 9797
BKCL	Project Manager	Mr. Vincent, Kwan Chun Yin	9833 1313	2770 4278
BKCL	Site Agent	Mr. Chan Kam Chuen	6462 8910	2770 4278
BKCL	Environmental Officer	Ms. Ricci Poon Wai Tin	9533 1115	2770 4278
AUES	Environmental Team Leader	Mr. T. W. Tam	2959 6059	2959 6079
AUES	Environmental Consultant	Ms. Nicola Hon	2959 6059	2959 6079
AUES	Environmental Consultant	Mr. Ben Tam	2959 6059	2959 6079

**Legend:**

*MTRCL (Employer) – MTR Corporation Limited*

*MTRCL (Resident Engineer) – MTR Corporation Limited*

*BKCL (Main Contractor) – Build King Construction Limited*

*AECOM (IEC) – AECOM Consulting Services Limited*

*AUES (ET) – Action-United Environmental Services & Consulting*

## **Appendix C**

### **Master Construction Programme**

Wan Chai Station Lee Tung Street Subway

ABWF Works Installation Programme

Date: 28/2/2017

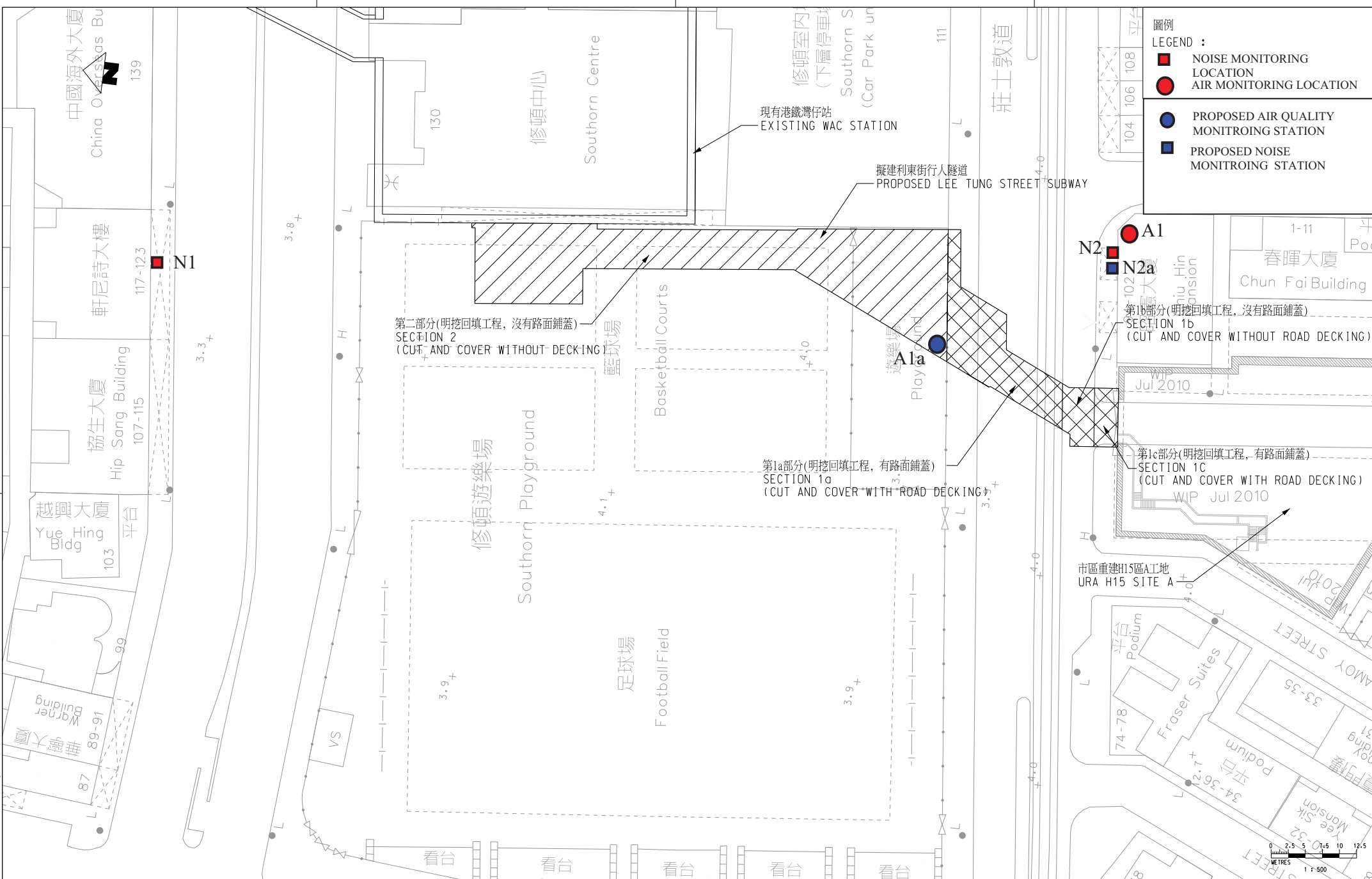
Description of Works	March					April				May					June				July			
	Week 1	Week 2	Week 3	Week 4	Week 5	Week 1	Week 2	Week 3	Week 4	Week 1	Week 2	Week 3	Week 4	Week 5	Week 1	Week 2	Week 3	Week 4	Week 1	Week 2	Week 3	Week 4
<b>Chan Chu Kee</b>																						
<b>1) Fixed Door</b>																						
Fabrication in progress at mainland China																						
Mock-up test at mainland China																						
Final fine tune																						
Packing for deliver																						
Delivery to site and installation																						
Decorative door sub frame																						
<b>2) Steel Door</b>																						
Allow shop drawing approval																						
Off site fabrication																						
Delivery to site and installation																						
<b>3) Aluminum Louvre (Fresh and Exhaust)</b>																						
Allow shop drawing approval																						
Production																						
Delivery to site and installation																						
<b>4) Stainless steel cover over MI and U channel</b>																						
Allow shop drawing approval																						
Off site fabrication																						
Delivery to site and installation																						
<b>5) Fixed Smoke Barrier</b>																						
Allow shop drawing approval																						
Steel subframe and FRP board																						
FRP glass																						
<b>6) BOH stainless steel cat ladder with fall arrest system</b>																						
Allow shop drawing approval																						
Off site fabrication																						
Delivery to site and installation																						
<b>Kalen- VE Panel</b>																						
Allow shop drawing approval																						
Subframe installation																						
Standard module installation																						
Measurement of non-standard module																						
Fabrication of non-standard module																						
Delivery non-standard module installation																						
<b>Asia Sign</b>																						
<b>1) Advertising Panels</b>																						
Allow shop drawing approval																						
Fabrication																						
Delivery to site and installation																						
<b>2) Signage</b>																						
Allow shop drawing approval																						
Fabrication																						
Delivery to site and installation																						
<b>Samwa</b>																						
<b>1) Security and FRP shutter at H15</b>																						
Allow shop drawing approval																						
Fabrication																						
Delivery to site and installation																						
<b>2) Security and FRP shutter for Kiosk 1 &amp; 2</b>																						
Allow shop drawing approval																						
Fabrication																						
Delivery to site and installation																						
<b>Wing Yip</b>																						
<b>1) Ceiling along subway</b>																						
Allow shop drawing approval																						
Ceiling panel fabrication																						
Ceiling subframe installation																						
First batch delivery for installation																						
Final batch delivery for installation																						
<b>2) Ceiling at WAC station</b>																						
Ceiling panel fabrication																						
Ceiling subframe installation																						
First batch delivery for installation																						
Final batch delivery for installation																						
<b>Hong Yu</b>																						
<b>1) Blockwork wall at H15</b>																						
<b>2) Blockwork wall at WAC station</b>																						
<b>3) Floor tiling work along subway</b>																						
<b>4) Vent shafts external wall tiles</b>																						
Allow tile samples selected by MTR																						
Order to Supplier - Mosaic																						
Production																						
Delivery to site and fixing																						
<b>Tin Ha</b>																						
<b>Kiosk 1 &amp; 2 shopfront metal works</b>																						
Allow shop drawing approval																						
Fabrication																						
Delivery to site and installation																						

Remark: Updated programme is being revised and will be supplemented when it is ready

## **Appendix D**

### **Monitoring Locations**

Ca:\ProgramData\Bentley\MicroStation\18\SELECTseries\WorkSpace\System\cfg\WTR\_PDF\_BM\_COA\_3000P.dwt  
 04/2024/5/REP/REP1/CONTR/CSS/556/NE/150\_27A\_005/556P  
 PLOT BY: MTR  
 FILE NAME: 18/04/2024/5/REP/REP1/CONTR/CSS/556/NE/150\_27A\_005/556P



**圖例**  
**LEGEND :**

- NOISE MONITORING LOCATION
- AIR MONITORING LOCATION
- PROPOSED AIR QUALITY MONITORING STATION
- PROPOSED NOISE MONITORING STATION

TITLE  
 CONSULTANCY AGREEMENT NO. NEX/1050  
 DETAILED DESIGN FOR LEE TUNG STREET SUBWAY  
 LOCATION OF NOISE AND AIR MONITORING LOCATION

**MTR**  
 WAC STATION LEE TUNG STREET SUBWAY  
 ORIGINATOR  
**Mott MacDonald**  
 25F Two Landmark East  
 100 Tsim Sha Tsui Street  
 Kowloon, Hong Kong  
 Tel: +852 2182 0107  
 Fax: +852 2182 1000  
 www.mottmacdon.com.hk

DRAWN	
DESIGNED	
CHECKED	
APPROVED	
DATE	
DO NOT SCALE DRAWINGS. ALL DIMENSIONS SHALL BE VERIFIED ON SITE.	
COPYRIGHT © MOTT MACDONALD 2008. ALL RIGHTS RESERVED. NO PART OF THIS DOCUMENT IS TO BE REPRODUCED OR TRANSMITTED IN ANY FORM OR BY ANY MEANS, ELECTRONIC OR MECHANICAL, INCLUDING PHOTOCOPYING, RECORDING, OR BY ANY INFORMATION STORAGE AND RETRIEVAL SYSTEM, WITHOUT THE WRITTEN CONSENT OF THE MOTT MACDONALD GROUP.	

REV	DESCRIPTION	BY	DATE	APPROVED	REV	DESCRIPTION	BY	DATE	APPROVED
D	GENERAL REVISION								
C	GENERAL REVISION								
B	GENERAL REVISION								
A	PROJECT PROFILE								

REV	DESCRIPTION	BY	DATE	APPROVED

SCALE: 1:500 (A3) DRAWING NO. REV.



## **Appendix E**

### **Event and Action Plan**

**Event and Action Plan for Construction Noise**

Event	Action			
	ET	IEC	ER	Contractor
Action Level	1. Notify IEC and Contractor. 2. Carry out investigation. 3. Report the results of investigation to the IEC and Contractor. 4. Discuss with the Contractor and formulate remedial measures 5. Increase monitoring frequency to check mitigation effectiveness.	1. Review the analyzed result submitted by ET. 2. Review the proposed remedial measures by the Contractor and advise the ER accordingly. 3. Supervise the implementation of remedial measures.	甲、 Confirm receipt of notification of exceedance 乙、 Notify Contractor 丙、 Require Contractor to propose remedial measures for the analyzed noise problem 丁、 Ensure remedial measures are properly implemented.	1. Submit noise mitigation proposals to IEC 2. Implement noise mitigation proposals
Limit Level	1. Notify IEC, ER, EPD and Contractor, and follow other actions 2. Identify source 3. Repeat measurement to confirm findings 4. Increase monitoring frequency 5. Check Contractor's working procedures to determine possible mitigation to be implemented 6. Inform IEC, ER and EPD the causes and actions taken for the exceedances 7. Assess effectiveness of Contractor's remedial actions and keep IEC, EPD, ER informed of the results 8. If exceedance stops, cease additional monitoring	1. Discuss amongst ER, ET and Contractor on the potential remedial actions 2. Review Contractor's remedial actions whenever necessary to assure their effectiveness and advise the ET accordingly 3. Supervise the implementation of remedial measures	1. Confirm receipt of notification of exceedances 2. Notify Contractor 3. Require Contractor to propose remedial measures 4. Ensure remedial measures are properly implemented 5. If exceedance continues, consider what portion of the work is responsible and instruct the Contractor to stop that portion of work until the exceedance is abated.	1. Take immediate action to avoid further exceedance 2. Submit proposals for remedial actions to IEC within 3 working days of notifications 3. Implement the agreed proposals 4. Revise and resubmit proposals if problem still not under control 5. Stop the relevant portion of works as determined by the ER until the exceedance is abated

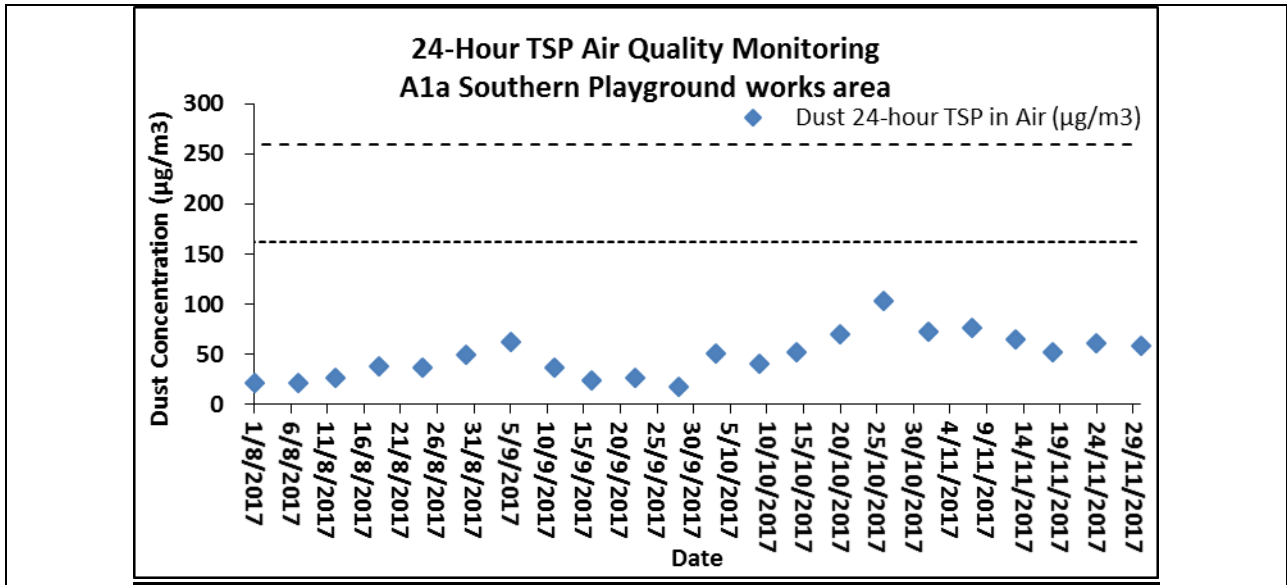
**Event and Action Plan for Air Quality**

Event	Action			
	ET	IEC	ER	Contractor
<b>Action Level</b>				
Exceedance for one sample	1. Identify source; 2. If valid, inform IEC and ER; 3. Repeat measurement to confirm finding; 4. Increase monitoring frequency to daily	1. Check monitoring data submitted by ET; 2. Check Contractor's working method.	1. Notify Contractor	1. Rectify any unacceptable practice; 2. Amend working methods if appropriate
Exceedance for two or more consecutive samples	1. Identify source; 2. Inform IEC and EPD; 3. Repeat measurements to confirm findings; 4. Increase monitoring frequency to daily; 5. Discuss with IEC and Contractor on remedial action required; 6. If exceedance continues, arrange meeting with IEC and ER; 7. If exceedance stops, cease additional monitoring.	1. Check monitoring data submitted by ET; 2. Check Contractor's working method; 3. Discuss with ET and Contractor on possible remedial measures; 4. Advise the ER on the effectiveness of the proposed remedial measures; 5. Supervisor implementation of remedial measures.	1. Confirm receipt of notification of failure in writing; 2. Notify Contractor; 3. Ensure remedial Measure properly implemented.	1. Submit proposals for remedial action to IEC within 3 working days of notification; 2. Implement the agreed proposals; 3. Amend proposal if appropriate.
<b>Limit Level</b>				
Exceedance for one sample	1. Identify source; 2. Inform ER and EPD; 3. Repeat measurement to confirm finding; 4. Increase monitoring frequency to daily; 5. Assess effectiveness of Contractor's remedial actions and keep IEC, EPD and ER informed of the results.	1. Check monitoring data submitted by ET; 2. Check Contractor's working method; 3. Discuss with ET and the Contractor on possible remedial measures; 4. Advise the ER on the effectiveness of the proposed remedial measures; 5. Supervise implementation of remedial measures.	1. Confirm receipt of notification of failure in writing; 2. Notify Contractor; 3. Ensure remedial measures properly implemented.	1. Take immediate action to avoid further exceedance; 2. Submit proposals for remedial actions to IEC within 3 working days of notification; 3. Implement the agreed proposals; 4. Amend proposal if appropriate.
Exceedance for two or more consecutive samples	1. Notify IEC, ER, Contractor and EPD; 2. Identify sources; 3. Repeat measurement to confirm findings; 4. Increase monitoring frequency to daily; 5. Carry out analysis of Contractor's working procedures to determine possible mitigation to be implemented; 6. Arrange meeting with IEC and ER to discuss the remedial actions to be taken; 7. Assess effectiveness of Contractor's remedial actions and keep IEC, EPD and ER informed of the results; 8. If exceedance stops cease additional monitoring.	1. Discuss amongst ER, ET and Contractor on the potential remedial actions; 2. Review Contractor's remedial actions whenever necessary to assure their effectiveness and advise the ET accordingly. 3. Supervise the implementation of remedial measures.	1. Confirm receipt of notification of failure in writing; 2. Notify Contractor; 3. In consultation with IEC, agree with the Contractor on the remedial measures to be implemented; 4. Ensure remedial measures properly implemented; 5. If exceedance continues, consider what portion of the work is responsible and instruct the Contractor to stop that portion of work until the exceedance is abated	1. Take immediate action to avoid further exceedance; 2. Submit proposals for remedial actions to IEC within 3 working days of notification; 3. Implement the agreed proposals; 4. Resubmit proposals if problem still not under control; 5. Stop the relevant portion of works as determined by the ER until the exceedance is abated.

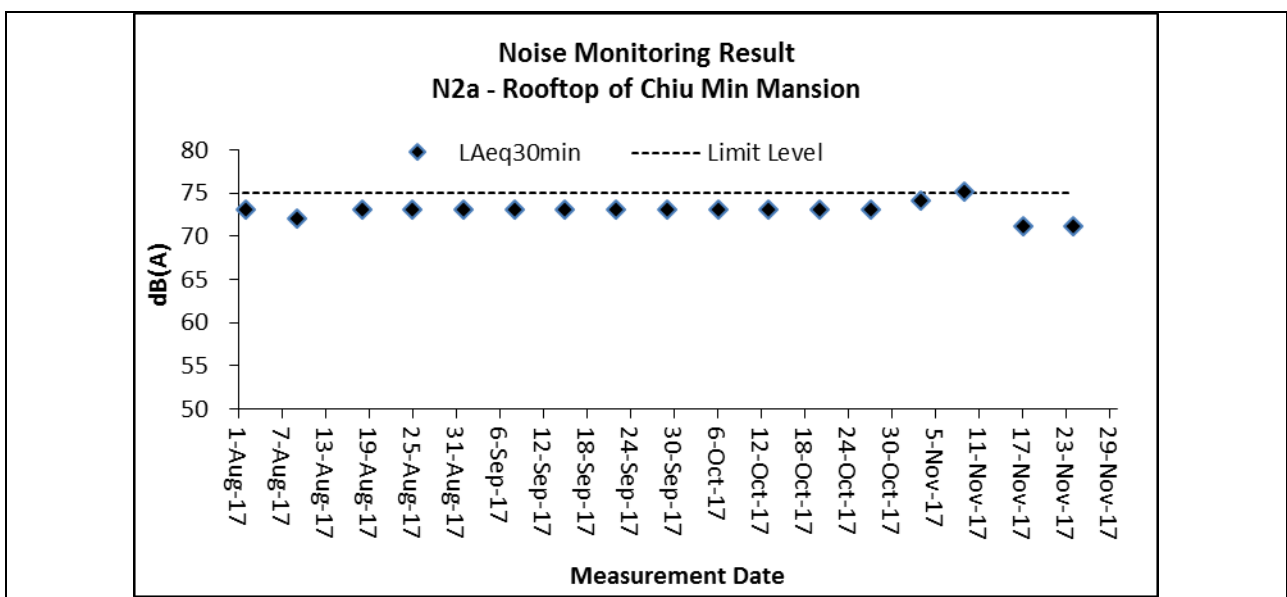
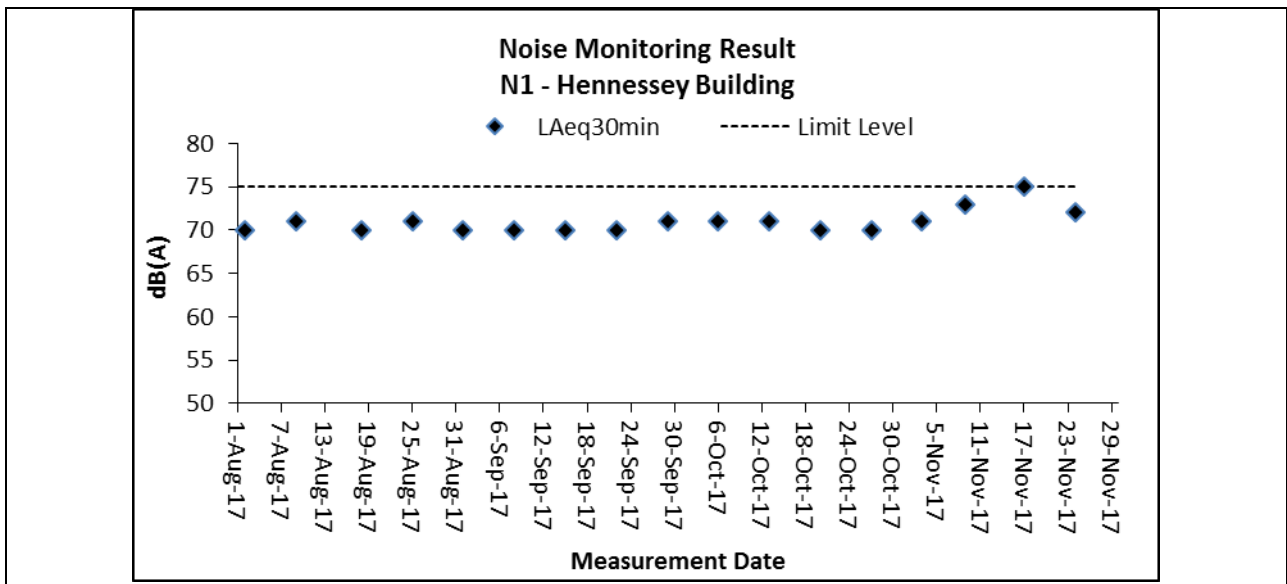
## **Appendix F**

### **Graphical Plots**

**Air Quality**



**Construction Noise**



## **Appendix G**

### **Meteorological Information**

Meteorological Data downloaded from HKO in the Reporting Period							
Date		Weather	Total Rainfall (mm)	Kings Park Station			
				Mean Air Temp. (°C)	Wind Speed (km/h)	Mean Relative Humidity (%)	Wind Direction
1-Sep-17	Fri	Moderate southwesterly winds.	6.5	28.8	6.5	75	W
2-Sep-17	Sat	Moderate southwesterly winds.	1	28.5	7	82	W
3-Sep-17	Sun	Moderate southwesterly winds.	23.8	27.8	10.6	89.2	W
4-Sep-17	Mon	Showers will ease off and sunny intervals	32.8	26.1	10.6	89	W
5-Sep-17	Tue	Mainly cloudy with showers.	6.4	28.3	7.3	85	S/SW
6-Sep-17	Wed	Mainly cloudy with a few showers.	Trace	29.7	6.5	76.7	W/NW
7-Sep-17	Thu	Mainly cloudy with showers.	1.8	28.7	6.6	81.5	W/NW
8-Sep-17	Fri	Mainly cloudy with a few showers.	1.1	28.8	8.2	77.5	S/SE
9-Sep-17	Sat	Mainly fine and hot apart from isolated showers.	25.8	28.8	9.1	76.5	SE
10-Sep-17	Sun	Light to moderate southerly winds.	Trace	29.2	8.5	75	W/NW
11-Sep-17	Mon	Mainly fine and hot apart from isolated showers.	0	29.9	7	72.7	W/NW
12-Sep-17	Tue	Mainly cloudy with isolated showers.	0.6	30.6	5.6	73.7	W/NW
13-Sep-17	Wed	Moderate easterly winds.	0	30.4	11.6	67.5	E/SE
14-Sep-17	Thu	Very hot with sunny periods	0	29.2	15.2	62	E/NE
15-Sep-17	Fri	Mainly cloudy with isolated showers.	Trace	30.2	6.7	72	E/SE
16-Sep-17	Sat	Light to moderate southerly winds.	0	30.5	6.2	85	SE
17-Sep-17	Sun	Mainly fine and hot apart from isolated showers.	0	30.6	4.7	69.2	E/SE
18-Sep-17	Mon	Mainly cloudy with isolated showers.	0	29.8	8.3	71.5	E/SE
19-Sep-17	Tue	Hot with sunny periods and a few showers.	0	29.3	8.5	73	E/SE
20-Sep-17	Wed	Very hot with sunny periods	0.2	29.5	6.5	75.5	E/SE
21-Sep-17	Thu	Mainly cloudy with isolated showers.	Trace	29.3	7.5	76.7	E/SE
22-Sep-17	Fri	Moderate easterly winds.	17.9	27.9	8.2	82	E/SE
23-Sep-17	Sat	Very hot with sunny periods	33.4	28.7	11.1	81	SE
24-Sep-17	Sun	Moderate southeasterly winds	5.6	28.3	16.6	82.5	E/SE
25-Sep-17	Mon	Hot with sunny periods and a few showers.	0.5	28.9	9.9	78.5	SE
26-Sep-17	Tue	Mainly fine. Very hot during the day.	0	29.8	6.1	75	E/SE
27-Sep-17	Wed	Mainly fine and very hot. Light winds.	0	29.9	6.5	78	Maintenance
28-Sep-17	Thu	Mainly fine and very hot. Light winds.	0	29.8	7.3	68.5	W
29-Sep-17	Fri	Mainly cloudy with a few showers.	Trace	29.5	10.2	74.2	E/SE
30-Sep-17	Sat	Moderate to fresh easterly winds	35	27.8	11.0	74.1	SE

Meteorological Data downloaded from HKO in the Reporting Period							
Date		Weather	Total Rainfall (mm)	Kings Park Station			
				Mean Air Temp. (°C)	Wind Speed (km/h)	Mean Relative Humidity (%)	Wind Direction
1-Oct-17	Sun	Mainly cloudy with a few showers.	6.6	28.8	15	74	SE
2-Oct-17	Mon	Moderate to fresh easterly winds	3.6	28.9	14	75	SE
3-Oct-17	Tue	Mainly cloudy with a few showers.	0	30.5	7.5	75	SE
4-Oct-17	Wed	Moderate east to northeasterly winds	9.5	28.2	13.5	83	E/SE
5-Oct-17	Thu	Moderate east to northeasterly winds	Trace	28.5	14.5	72.5	SE
6-Oct-17	Fri	Sunny intervals during the day.	0.2	28.7	11.3	74	E/SE
7-Oct-17	Sat	Moderate to fresh easterly winds	0	29.6	11.4	85	SE
8-Oct-17	Sun	Mainly cloudy with a few showers.	0	29.1	11.7	70.7	SE
9-Oct-17	Mon	Moderate east to northeasterly winds	Trace	29.4	15	68.5	E/SE
10-Oct-17	Tue	Moderate east to northeasterly winds	Trace	30.1	13	68.5	E/SE
11-Oct-17	Wed	Sunny intervals during the day.	0.2	29.7	3.7	73.2	E/SE
12-Oct-17	Thu	Mainly fine and dry	0	29.9	8.6	64.2	E/SE
13-Oct-17	Fri	Fresh north to northeasterly winds,	0	26.9	9.8	57.5	N/NE
14-Oct-17	Sat	Moderate east to northeasterly winds	0.4	23.4	10	60	NE
15-Oct-17	Sun	Sunny intervals during the day.	20.7	23.6	25	82.5	SE
16-Oct-17	Mon	Moderate to fresh easterly winds	17.1	27.2	12.7	89	E/SE
17-Oct-17	Tue	Mainly cloudy with a few showers.	41.3	26.1	9.7	85.5	E/SE
18-Oct-17	Wed	Moderate east to northeasterly winds	Trace	26.7	8.5	68.7	N/NE
19-Oct-17	Thu	Moderate east to northeasterly winds	0	25.2	8.2	64.7	N/NE
20-Oct-17	Fri	Sunny intervals during the day.	0	24.7	10	62.5	N/NE
21-Oct-17	Sat	Mainly fine and dry	0	23.9	11	62.0	N
22-Oct-17	Sun	Fresh north to northeasterly winds,	0	22.8	6.6	51.7	NE
23-Oct-17	Mon	Mainly cloudy with a few rain patches.	0	23.8	5.6	55	NE
24-Oct-17	Tue	Moderate east to northeasterly winds	0	24.8	9.7	60	SE
25-Oct-17	Wed	Sunny intervals during the day.	Trace	24.5	10	65	E/SE
26-Oct-17	Thu	Mainly fine and dry	0	24.9	5	61.7	E/SE
27-Oct-17	Fri	Mainly fine and dry	0	25.6	7.1	56.5	E/NE
28-Oct-17	Sat	Sunny intervals during the day.	0	25.6	7.9	60	E
29-Oct-17	Sun	Moderate northeasterly winds, occasionally fresh offshore.	0	24.2	13.7	44	NE
30-Oct-17	Mon	Mainly fine and dry	Trace	22.5	12	45	E/NE
31-Oct-17	Tue	Moderate northeasterly winds, occasionally fresh offshore.	Trace	21.9	8.2	51.5	E/NE



Meteorological Data downloaded from HKO in the Reporting Period							
Date		Weather	Total Rainfall (mm)	Kings Park Station			
				Mean Air Temp. (°C)	Wind Speed (km/h)	Mean Relative Humidity (%)	Wind Direction
1-Nov-17	Wed	Mainly cloudy and cool tonight.	0	23.4	8.5	55.2	E/NE
2-Nov-17	Thu	Dry with sunny periods in the afternoon.	0	24.5	8.2	59	N/NE
3-Nov-17	Fri	It will be cloudy.	0	25.1	9.7	58.7	NE
4-Nov-17	Sat	Moderate north to northeasterly winds, occasionally fresh offshore at first.	0.3	23.2	10.1	66.1	SE
5-Nov-17	Sun	Moderate to fresh northerly winds.	Trace	22.7	6.9	61.2	E/SE
6-Nov-17	Mon	Mainly cloudy and cool tonight. Moderate to fresh northerly winds.	Trace	23.1	7.5	67.2	E/NE
7-Nov-17	Tue	Dry with sunny periods in the afternoon.	0.3	23.7	7.5	72.2	N/NE
8-Nov-17	Wed	A few light rain patches later.	Trace	27	6.8	72.5	NE
9-Nov-17	Thu	Moderate east to northeasterly winds.	Trace	24.9	10.7	70.5	SE
10-Nov-17	Fri	Moderate east to northeasterly winds.	0	25.9	9	68.5	E/SE
11-Nov-17	Sat	Moderate east to northeasterly winds.	0	25.1	8	69.1	E
12-Nov-17	Sun	Dry with sunny periods in the afternoon.	14.7	21.9	11	81.2	E/SE
13-Nov-17	Mon	Mainly cloudy and cool tonight.	12.5	21.9	19.3	88.5	E/SE
14-Nov-17	Tue	Dry with sunny periods in the afternoon.	0.2	23.1	9	86.2	E/SE
15-Nov-17	Wed	Moderate to fresh northerly winds.	0	23	11.7	86.2	E/SE
16-Nov-17	Thu	Moderate to fresh northerly winds.	0	24	11.7	76.2	E/SE
17-Nov-17	Fri	Mainly cloudy and cool tonight.	0	24.8	8.2	79	SE
18-Nov-17	Sat	Dry with sunny periods in the afternoon.	1.9	23.2	8.0	81.7	SE
19-Nov-17	Sun	It will be cloudy.	1	19.3	9	78.7	E/SE
20-Nov-17	Mon	Moderate north to northeasterly winds, occasionally fresh offshore at first.	0	18.6	7.1	75	N/NE
21-Nov-17	Tue	Moderate to fresh northerly winds.	0	19.1	5.5	77.5	N/NE
22-Nov-17	Wed	Mainly cloudy and cool tonight. Moderate to fresh northerly winds.	0	20	7.5	62.7	NE
23-Nov-17	Thu	Dry with sunny periods in the afternoon.	0	17.8	8.3	56.2	N/NE
24-Nov-17	Fri	A few light rain patches later.	0	18.2	7.5	53.5	NE
25-Nov-17	Sat	Moderate east to northeasterly winds.	0	17.5	7.6	52.5	NE
26-Nov-17	Sun	Moderate east to northeasterly winds.	0	20.6	5.2	64.2	NE
27-Nov-17	Mon	Moderate east to northeasterly winds.	Trace	20.1	9.8	71.5	E/SE
28-Nov-17	Tue	Becoming cloudy. Sunny intervals tomorrow.	Trace	22.8	9.7	72.2	E/SE
29-Nov-17	Wed	It will be fine. Dry in the afternoon.	0	24.1	7.5	76	SE
30-Nov-17	Thu	Moderate north to northeasterly winds.	0.3	22.1	8.2	89.2	SE

## **Appendix H**

### **Waste Flow Table**

Wan Chai Station Lee Tung Street Subway- C6593-13C

Monthly Summary Waste Flow Table for 2016

Name of Employer: MTR Corporation Limited											Contract No.: C65931-13C									
Month	Actual Quantities of Inert C&D Materials Generated Monthly										Actual Quantities of Non-Inert C&D Wastes Generated Monthly					Actual Quantities of Non-Inert C&D Wastes Generated Monthly				
	Total Quantity Generated	Broken Concrete	Building Debris	Mixed Rock & Soil	Bentonite	Rubbish	Slurry	Rock	Soil	Reused in this Project	Metals	Paper/ cardboard packaging	Plastics	Chemical Waste	Others, e.g. general refuse	Metals	Paper/ cardboard packaging	Plastics	Chemical Waste	Others, e.g. general refuse
	(in m <sup>3</sup> )	(in m <sup>3</sup> )	(in m <sup>3</sup> )	(in m <sup>3</sup> )	(in m <sup>3</sup> )	(in m <sup>3</sup> )	(in m <sup>3</sup> )	(in m <sup>3</sup> )	(in m <sup>3</sup> )	(in m <sup>3</sup> )	(in m <sup>3</sup> )	(in m <sup>3</sup> )	(in m <sup>3</sup> )	(in m <sup>3</sup> / Litre)	(in m <sup>3</sup> )	(in ton)	(in ton)	(in ton)	(in Litre)	(in ton)
Jan	45.59	0	0	0	0	0	0	0	15.59	0	0	0	0	0	30	0	0	0	0	0
Feb	10	0	0	0	0	0	0	0	0	0	0	0	0	10	0	0	0	0	0	0
Mar	51.85	0	0	0	0	0	0	0	36.85	0	0	0	0	15	0	0	0	0	0	0
Apr	38.99	0	0	0	0	0	0	0	33.99	0	0	0	0	5	0	0	0	1.2	0	0
May	106.71	0	0	0	0	0	0	0	91.71	0	0	0	0	15	0	0	0	0	0	0
Jun	914.81	0	0	0	0	0	0	0	909.81	0	0	0	0	5	0	0	0	0	0	0
Jul	379.11	0	0	0	0	0	0	0	364.11	0	0	0	0	15	0	0	0	0	0	0
Aug	123.77	0	0	0	0	0	0	0	123.77	0	0	0	0	0	0	0	0	0	0	0
Sep	144.55	0	0	0	0	0	0	0	134.55	0	0	0	0	10	0	0	0	0	0	0
Oct	264.95	0	0	0	0	0	0	0	264.95	0	0	0	0	0	0	0	0	0	0	0
Nov	625.15	0	0	0	0	0	0	0	615.15	0	0	0	0	10	0	0	0	0	0	0
Dec	1041	0	0	0	0	0	0	0	1036	0	0	0	0	5	0	0	0	0	0	0
Total	3746.48	0	0	0	0	0	0	0	3626.48	0	0	0	0	120	0	0	0	1.2	0	0

Wan Chai Station Lee Tung Street Subway- C6593-13C

Monthly Summary Waste Flow Table for 2017

Name of Employer: MTR Corporation Limited											Contract No.: C65931-13C									
Month	Actual Quantities of Inert C&D Materials Generated Monthly										Actual Quantities of Non-Inert C&D Wastes Generated Monthly					Actual Quantities of Non-Inert C&D Wastes Generated Monthly				
	Total Quantity Generated	Broken Concrete	Building Debris	Mixed Rock & Soil	Bentonite	Rubbish	Slurry	Rock	Soil	Reused in this Project	Metals	Paper/ cardboard packaging	Plastics	Chemical Waste	Others, e.g. general refuse	Metals	Paper/ cardboard packaging	Plastics	Chemical Waste	Others, e.g. general refuse
	(in m <sup>3</sup> )	(in m <sup>3</sup> )	(in m <sup>3</sup> )	(in m <sup>3</sup> )	(in m <sup>3</sup> )	(in m <sup>3</sup> )	(in m <sup>3</sup> )	(in m <sup>3</sup> )	(in m <sup>3</sup> )	(in m <sup>3</sup> )	(in m <sup>3</sup> )	(in m <sup>3</sup> )	(in m <sup>3</sup> )	(in m <sup>3</sup> / Litre)	(in m <sup>3</sup> )	(in ton)	(in ton)	(in ton)	(in Litre)	(in ton)
Jan	463	0	0	0	0	0	0	0	463	0	0	0	0	0	0	0	0	0	0	0
Feb	267	0	0	0	0	0	0	0	267	0	0	0	0	0	0	0	0	0	0	0
Mar	19.15	0	0	0	0	0	0	0	12.6	0	0	0	0	6.55	0	0	0	0	0	0
Apr	54.88	0	0	0	0	0	0	0	18.4	0	0	0	0	36.48	0	0	0	0	0	0
May	47.49	0	0	0	0	0	0	0	17.35	0	0	0	0	30.14	0	0	0	0	0	0
Jun	45.88	0	0	0	0	0	0	0	0	0	0	0	0	45.88	0	0	0	0	0	0
Jul	22.5	0	0	0	0	0	0	0	0	0	0	0	0	22.5	0	0	0	0	0	0
Aug	97.54	0	0	0	0	0	0	0	59.82	0	0	0	0	37.72	0	0	0	0	0	0
Sep	139.81	0	0	129.3	0	0	0	0	0	0	0	0	0	10.51	0	0	0	0	0	0
Oct	59.67	0	0	55.32	0	0	0	0	0	0	0	0	0	4.35	0	0	0	0	0	0
Nov	21.29	0	0	16.31	0	0	0	0	0	0	0	0	0	4.98	0	0	0	0	0	0
Dec	0	0	0	0	0	0	0	0	0	0	0	0	0	0	0	0	0	0	0	0
Total	1238.21	0	0	200.93	0	0	0	0	838.17	0	0	0	0	199.11	0	0	0	0	0	0

## **Appendix I**

### **Implementation Schedule for Environmental Mitigation Measures (ISEMM)**

Project Profile Ref.	Recommended Mitigation Measures	Objectives of the Recommended Measures & Main Concerns to address	Implementation Parties	Location of the measure	When to implement the measure	Relevant requirements or standards for the measure to achieve
<b>NOISE IMPACT</b>						
S.5.1.1	<b><u>Use of quieter plant</u></b>	To minimize construction noise emissions	Contractor	Work site	Construction Stage	ProPECC PN2/93 and Noise Control Ordinance
S.5.1.1	<b><u>Use of noise enclosure and movable barrier</u></b> <ul style="list-style-type: none"> <li>• movable barrier can achieve a 5 dB(A) reduction for movable PME and 10 dB(A) reduction for stationary PME;</li> <li>• noise enclosure can achieve 15dB(A) reduction for PME;</li> <li>• noise enclosure is proposed to be built after open excavation in order to minimize the noise impact due to further excavation work and construction of subway. The enclosure should either be provided with acoustic door for access purpose which should be kept closed during the construction works or should be designed with no direct line of sight from the open side to the NSRs;</li> <li>• A typical design barrier with a steel frame of vertical / cantilever type would be adopted and located close to the noise generating part of PME;</li> <li>• Barrier material of surface mass in excess of 7kg/m<sup>2</sup> shall be required to achieve the maximum screening effect (and minimum 10kg/m<sup>2</sup> for noise enclosure);</li> <li>• The length of barrier should generally be at least five times greater than its height and the minimum height of a barrier should be such that no part of the noise source will be visible from the noise sensitive receiver being protected.</li> </ul>	To minimize construction noise emissions	Contractor	Work site	Construction Stage	ProPECC PN2/93, Noise Control Ordinance and EIAO Guidance Note NO. 9/2010
S.5.1.1	<b><u>General Construction Noise Control Measures</u></b> <ul style="list-style-type: none"> <li>• The Code of Practice on Good Management Practice to Prevent Violation of the Noise Control Ordinance (Chapter 400) (for Construction Industry) published by EPD shall be adopted;</li> <li>• The statutory and non-statutory requirements and guidelines shall be complied with;</li> <li>• Approval for the method of working, equipment and noise mitigation measures intended to be used at the site shall be granted from the Project Engineer before commencing any work;</li> </ul>	To minimize construction noise emissions	Contractor	Work site	Construction Stage	ProPECC PN2/93 and Noise Control Ordinance

Project Profile Ref.	Recommended Mitigation Measures	Objectives of the Recommended Measures & Main Concerns to address	Implementation Parties	Location of the measure	When to implement the measure	Relevant requirements or standards for the measure to achieve
	<ul style="list-style-type: none"> <li>Working methods to minimize the noise impact on the surrounding NSRs shall be formulated and executed, and the implementation of these methods shall be monitored by experienced personnel with suitable training;</li> <li>Noisy equipment and noisy activities shall be located as far away from the NSRs as is practical;</li> <li>Unused equipment shall be turned off;</li> <li>PME should be kept to a minimum and the parallel use of noisy equipment / machinery should be avoided;</li> <li>All plant and equipment shall be maintained regularly; and</li> <li>Material stockpiles and other structures shall be effectively utilized as noise barriers, whenever practicable.</li> </ul>					
<b>AIR QUALITY IMPACT</b>						
S.5.1.2	<p><b><u>Construction Dust Control Measures</u></b></p> <ul style="list-style-type: none"> <li>Regular watering to reduce dust emissions from all exposed site surface, particularly during dry weather;</li> <li>Frequent watering for particularly dusty construction areas and areas close to air sensitive receivers;</li> <li>Covering of stockpile of excavated dusty materials, if any, with impervious sheeting or spraying with water to maintain the entire surface wet;</li> <li>Provision of vehicle washing facilities at the entry and exit points of site;</li> <li>Tarpaulin covering of any dusty materials being transported to and from site by vehicle;</li> <li>Positioning of construction plant at maximum practicable distance from air sensitive receivers; and</li> <li>Due to the small size of the works sites and lack of space for stockpiling, excavated materials should be hauled off-site almost immediately. However, in the event of any stockpiled excavated materials, they should be covered with tarpaulin and be removed offsite as soon as practicable to avoid any dust nuisance arising</li> </ul>	To minimize the dust impacts arising from the construction works	Contractor	Work site	Construction Stage	Air Pollution Control (Construction Dust) Regulation

Project Profile Ref.	Recommended Mitigation Measures	Objectives of the Recommended Measures & Main Concerns to address	Implementation Parties	Location of the measure	When to implement the measure	Relevant requirements or standards for the measure to achieve
<b>WATER QUALITY IMPACT</b>						
S.5.1.3	<p><b><u>Construction Water Quality Impact Measures</u></b></p> <ul style="list-style-type: none"> <li>• Collection of wastewater into a sedimentation tank for treatment before discharge into the public drainage system;</li> <li>• Provision of silt trap and oil interceptor to remove the oil, lubricants, grease, silt, grit and debris from the wastewater prior to discharge to the public stormwater system. The silt traps and oil interceptors should be cleaned and maintained regularly;</li> <li>• Installation of wheel washing facilities to minimize muddy runoff;</li> <li>• Regular maintenance and inspection of drainage systems and erosion control and silt removal facilities;</li> <li>• Management and monitoring of sewage treatment facilities (if any);</li> <li>• Any foul effluent should not be discharged into any public sewer and stormwater drain, unless an effluent discharge permit is obtained under the WPCO by the Contractor;</li> <li>• Coverage of stockpiles of C&amp;D materials (if any) during rainstorms; and</li> <li>• Site toilet facilities, if needed, should be chemical toilets or should have the sewage discharge directed to a foul sewer.</li> </ul>	To reduce water quality impact induced by the construction work	Contractor	Work site	Construction Stage	ProPECC PN1/94; Water Pollution Control Ordinance
<b>WASTE MANAGEMENT</b>						
S.5.1.4	<p><b><u>Construction Waste Management Measures</u></b></p> <ul style="list-style-type: none"> <li>• Scrap metals or abandoned equipment should be recycled if possible;</li> <li>• Waste arising should be kept to a minimum and be handled, transported and disposed of in a suitable manner;</li> <li>• The Contractor should adopt a trip ticket system for the disposal of C&amp;D materials to any designated public filling facility and/or landfill. Independent audits of the Contractor and resident site staff will be undertaken to ensure that the correct procedures are being followed;</li> <li>• Chemical waste shall be handled in accordance with the Code of Practice on the Packaging, Handling and Storage of Chemical Wastes; and</li> </ul>	To adopt waste management measures in the way of avoiding, minimizing, reusing and recycling so as to reduce waste generation	Contractor	Work site	Construction Stage	Waste Disposal Ordinance (Cap. 354); Waste Disposal (Chemical Waste) (General) Regulation; DEVB TCW No. 6/2010; ETWB TCW No. 19/2005.



Project Profile Ref.	Recommended Mitigation Measures	Objectives of the Recommended Measures & Main Concerns to address	Implementation Parties	Location of the measure	When to implement the measure	Relevant requirements or standards for the measure to achieve
	<ul style="list-style-type: none"> <li>All general refuse should be segregated and stored in enclosed bins or compaction units and waste separation facilities for paper, aluminum cans, plastic bottles etc. should be provided to facilitate reuse or recycling of materials and their proper disposal.</li> </ul>					
<b>LANDSCAPE AND VISUAL IMPACT</b>						
S.5.1.5	<p><b><u>Landscape and Visual Measures</u></b></p> <ul style="list-style-type: none"> <li>Clear demarcation of works area to prevent damages to existing trees in close proximity;</li> <li>Protection of all trees planned to be retained onsite;</li> <li>Preserving all affected trees by transplanting where practical. Tree transplanting application and tree removal application shall be submitted for approval in accordance with ETWB TCW 3/2006; and</li> <li>Screening of construction works by hoardings/noise barriers around Works area in visually unobtrusive colours.</li> </ul>	To reduce landscape and visual impact by construction works.	Contractor	Work Site and nearby playground	Construction Stage	EIAO; ETWB TCW No. 3/2006.