

FIGURES

Figures 1 to 2
Works Areas of the Project

Figures 3 to 6
Location of Construction Air Quality
Monitoring Stations

Figures 7 to 8
Location of Construction Noise
Monitoring Stations

Figure 9
Air Quality and Noise Monitoring Locations for
Telegraph Bay Barging Point

Figure 10
Water Quality Monitoring Locations for
Telegraph Bay Barging Point

Figure 1 – Works Areas of the Project (1 of 2)

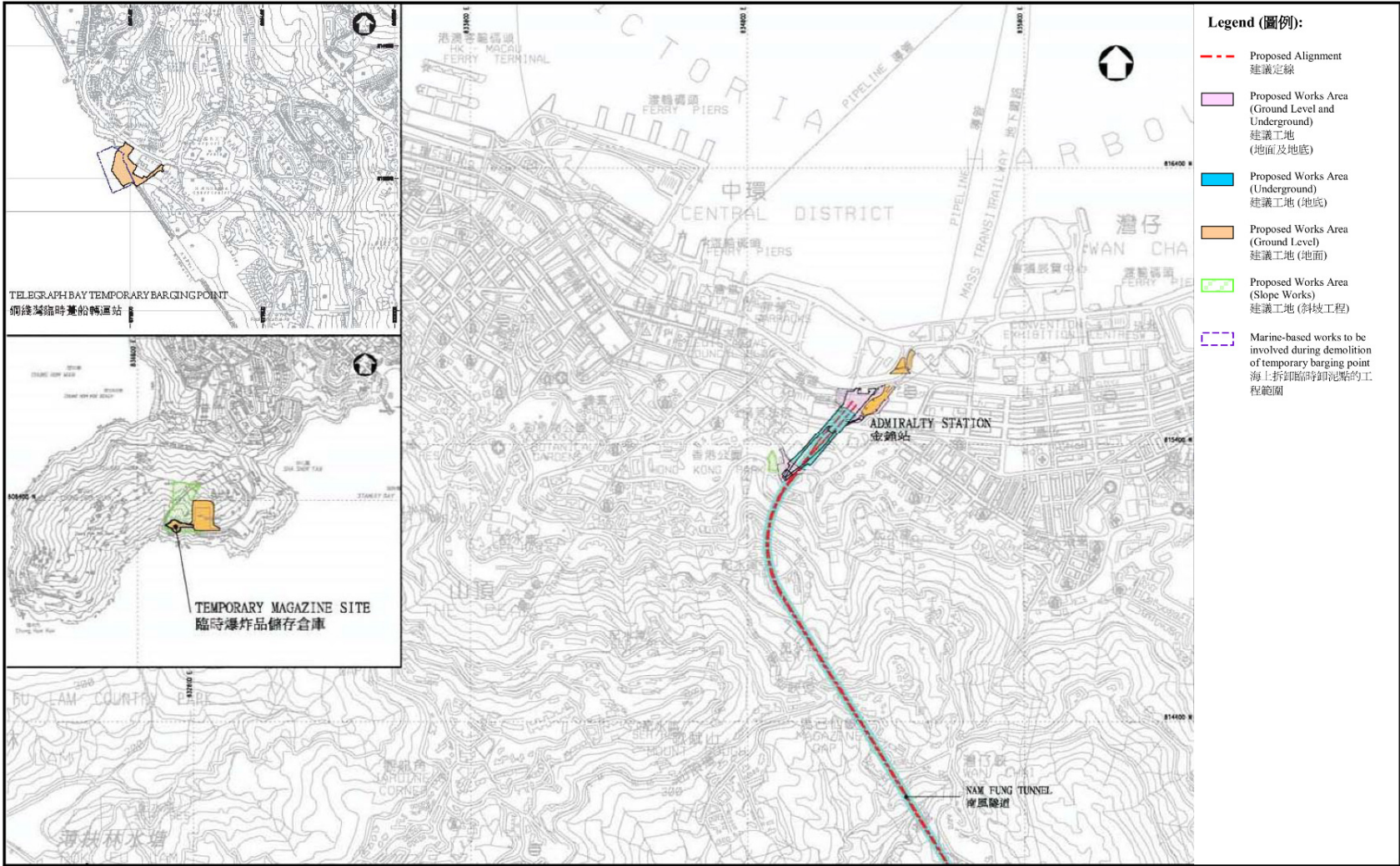


Figure 2 – Works Areas of the Project (2 of 2)

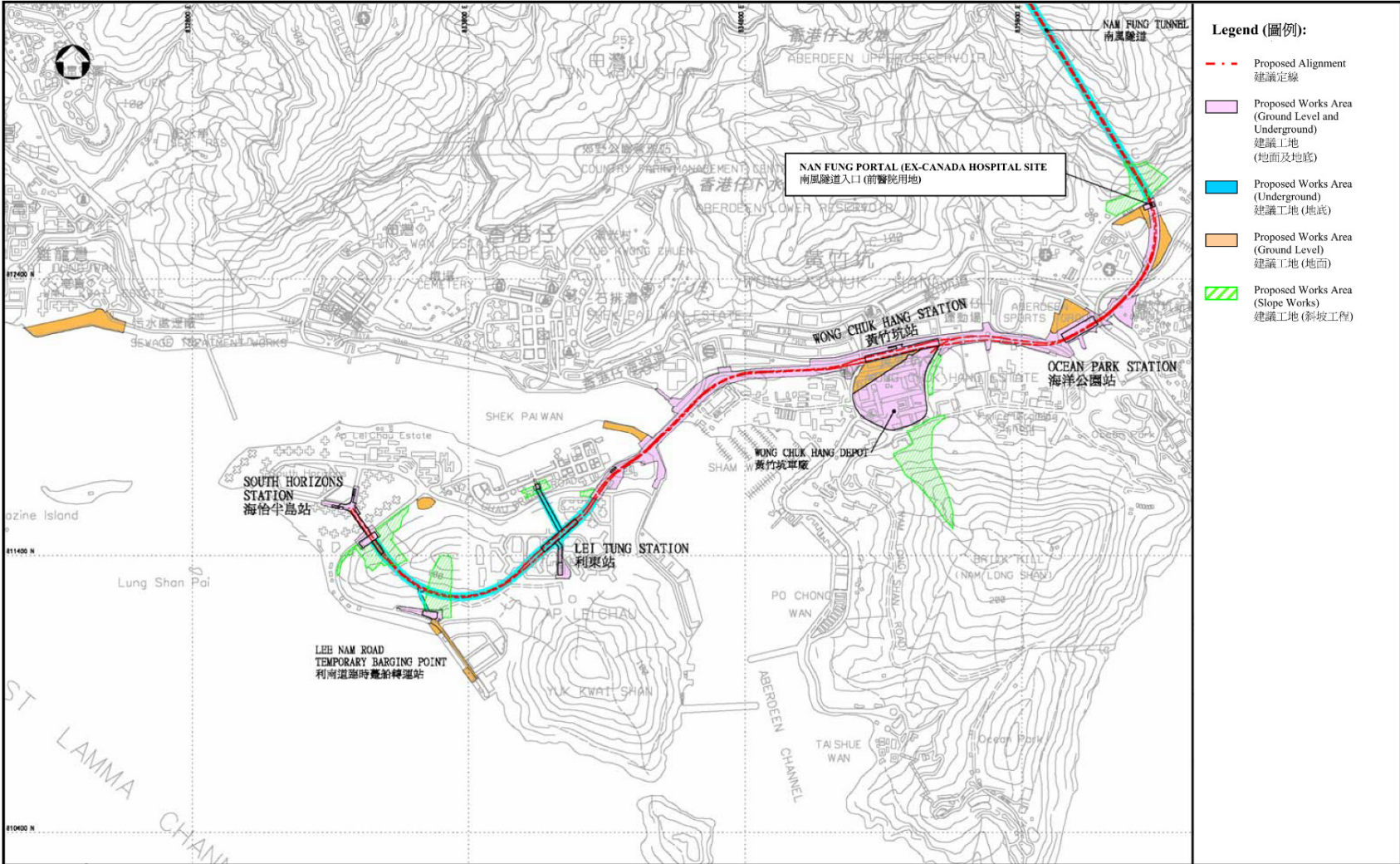


Figure 3 – Location of Construction Air Quality Monitoring Stations (1 of 4)

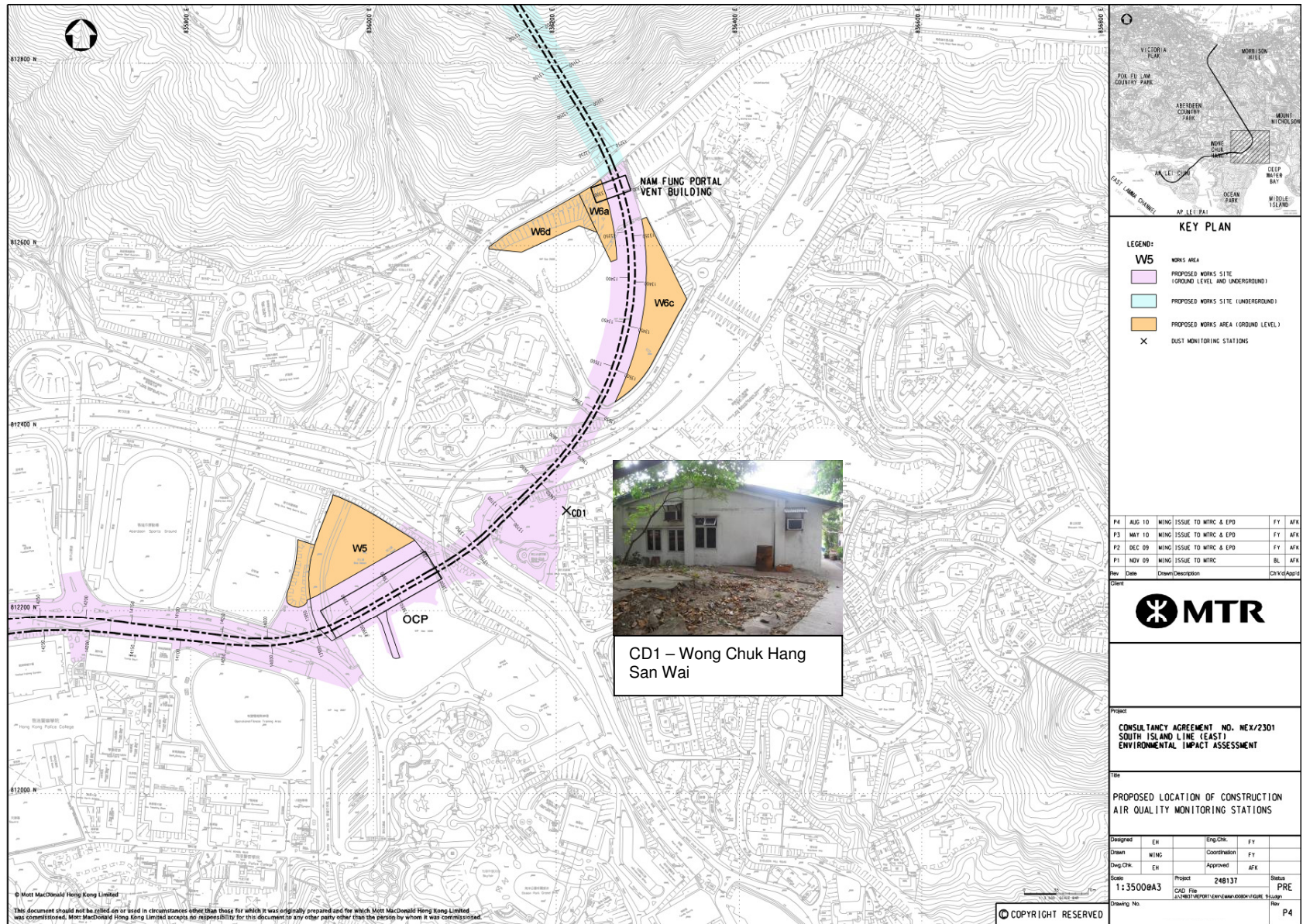


Figure 4 – Location of Construction Air Quality Monitoring Stations (2 of 4)

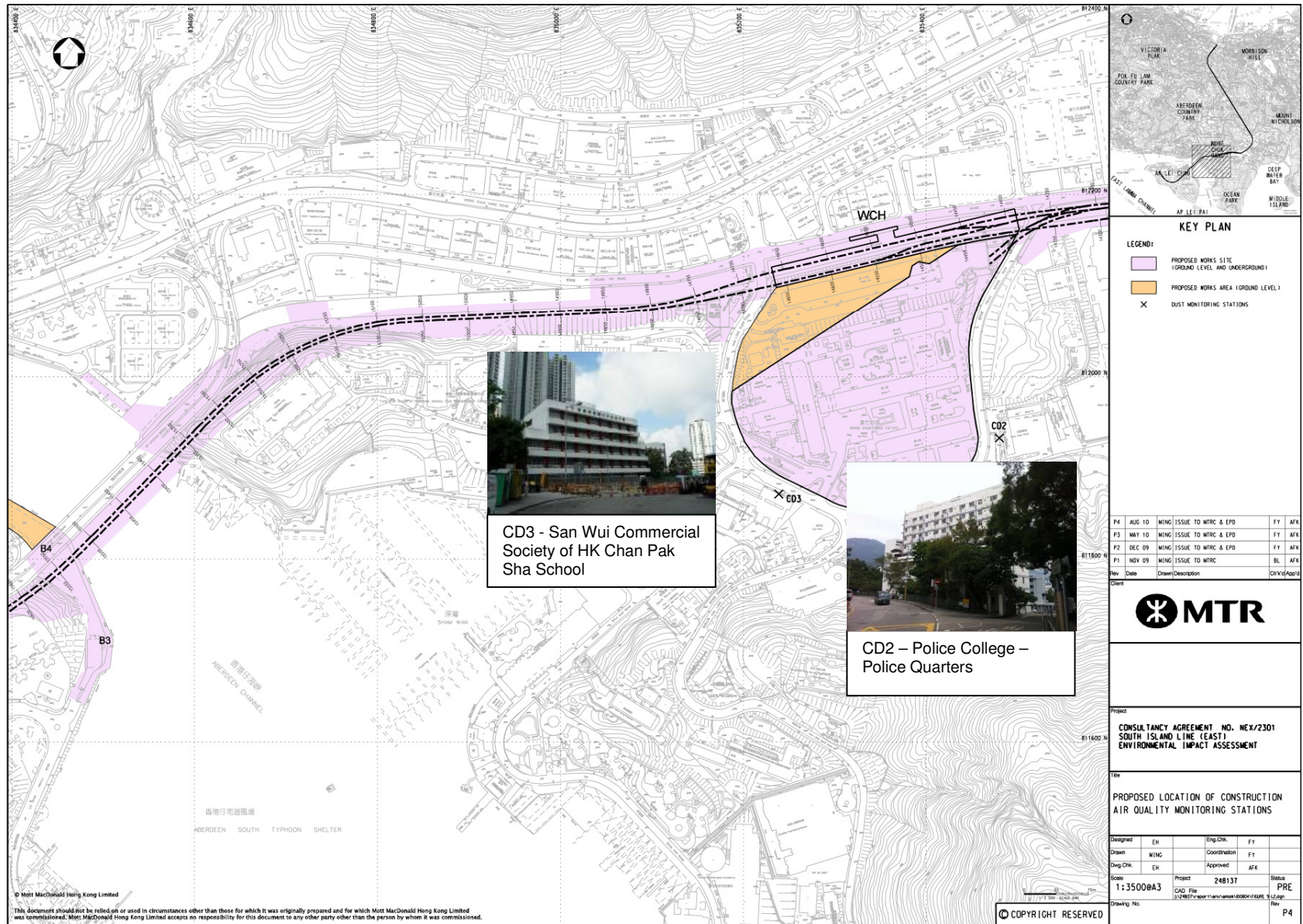


Figure 5 – Location of Construction Air Quality Monitoring Stations (3 of 4)



*This document should not be relied on or used in circumstances other than those for which it was originally prepared and for which Mott MacDonald Hong Kong Limited was commissioned. Mott MacDonald Hong Kong Limited accepts no responsibility for this document to any other party other than the person to whom it was commissioned.

Figure 6 – Location of Construction Air Quality Monitoring Stations (4 of 4)



Figure 7 – Location of Construction Noise Monitoring Stations (1 of 2)

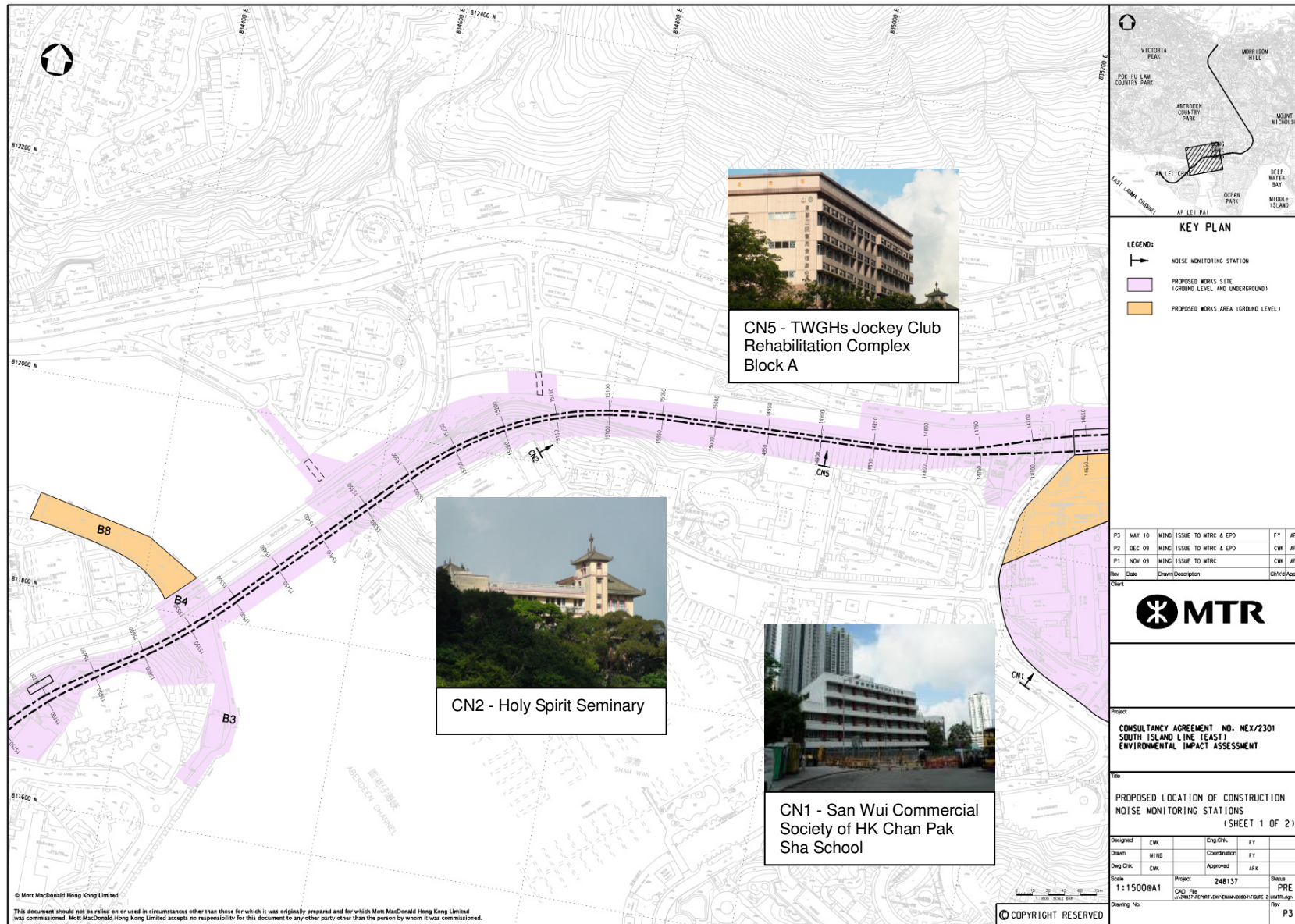


Figure 8 – Location of Construction Noise Monitoring Stations (2 of 2)

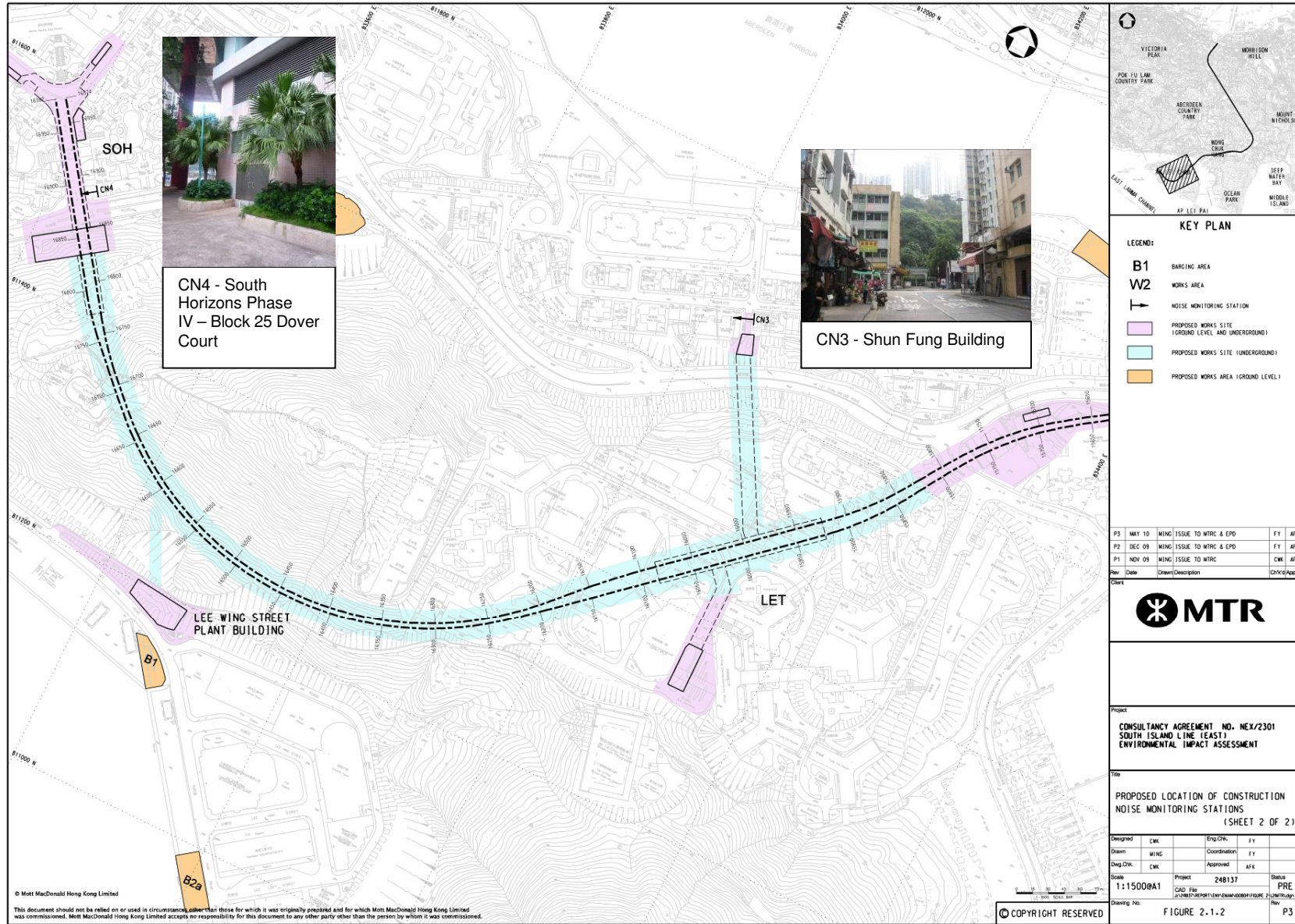


Figure 9 –Air Quality and Noise Monitoring Locations for Telegraph Bay Barging Point



Figure 10 –Water Quality Monitoring Locations for Telegraph Bay Barging Point

