

DO NOT SCALE DRAWING. CHECK ALL DIMENSIONS ON SITE.
ALL RIGHTS RESERVED.
© OVE ARUP & PARTNERS HONG KONG LIMITED.



805000 E

810000 E

815000 E

820000 N

820000 N

815000 N

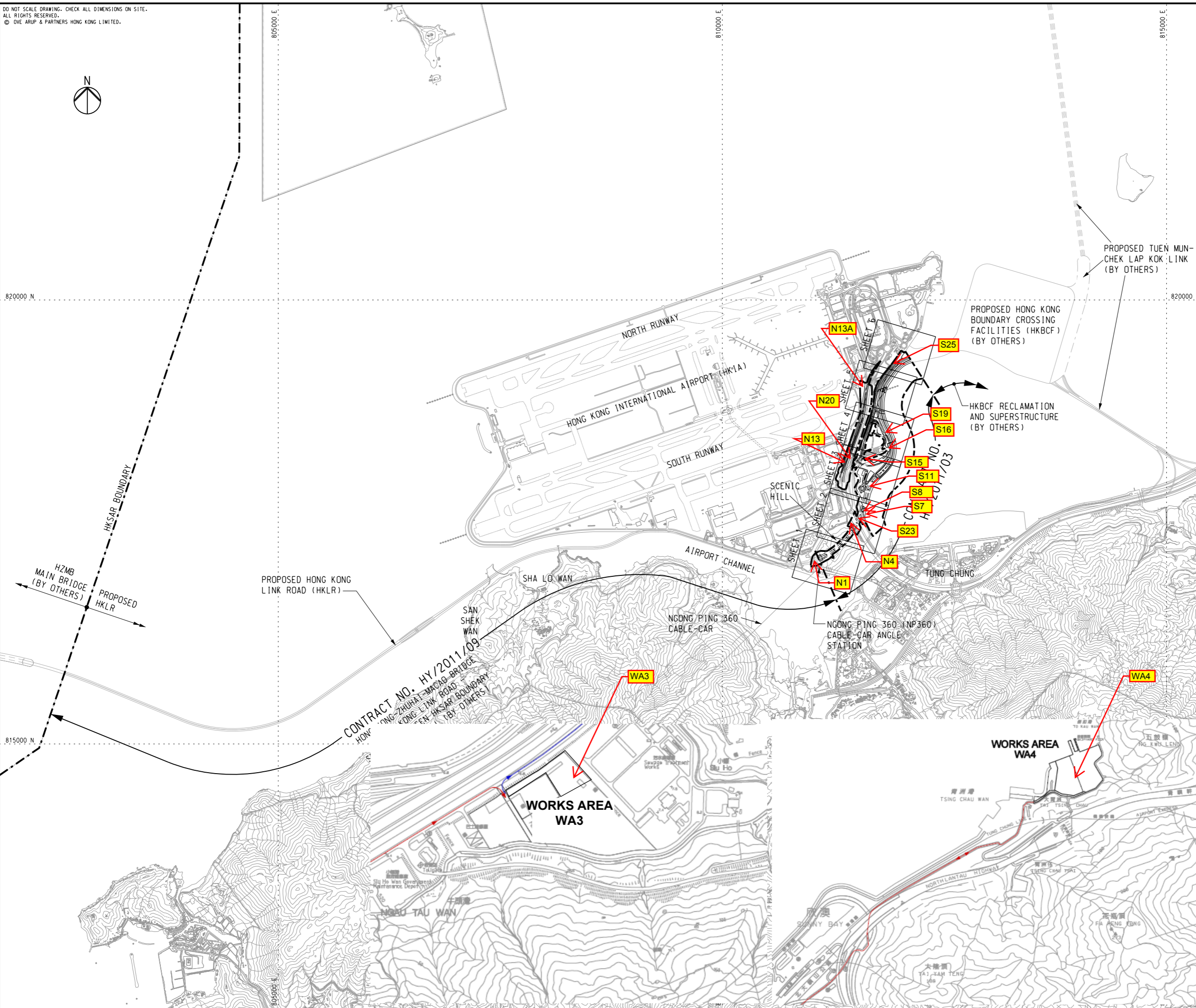
805000 E

NOTES

1. THIS DRAWING SHALL BE READ IN CONJUNCTION WITH DRG. NOS. 214487/2/T/002 - 007.

LEGEND

--- SITE BOUNDARY



A	TENDER ISSUE	IL	02/12
Rev	Description	By	Date

Consultant
ARUP 奧雅納工程顧問
Ove Arup & Partners Hong Kong Limited

Contract No. and Title:
Contract No. HY/2011/03
Hong Kong-Zhuhai-Macao Bridge
Hong Kong Link Road -
Section Between Scenic Hill and
Hong Kong Boundary Crossing Facilities

Drawing title
**GENERAL LAYOUT
KEY PLAN**

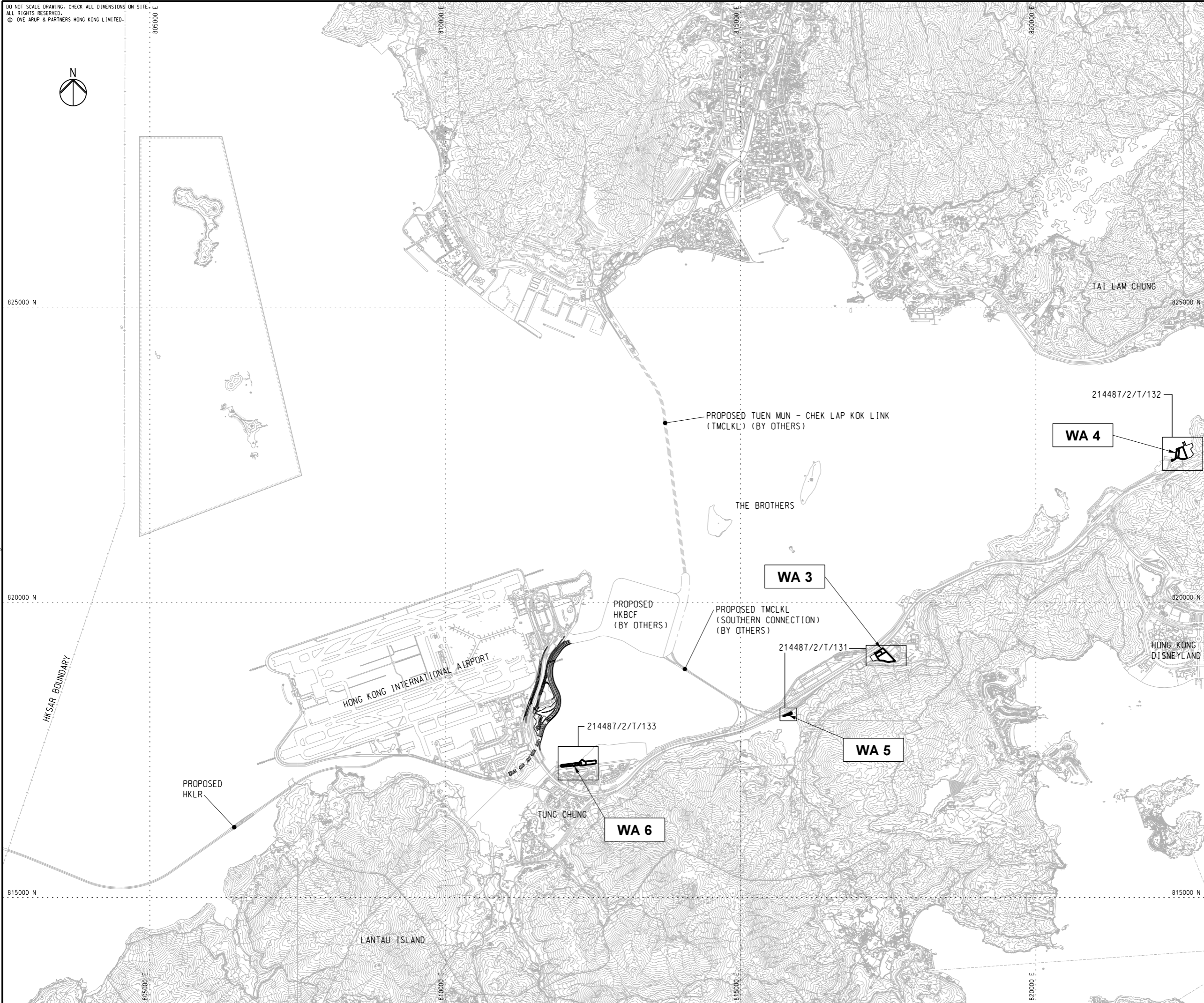
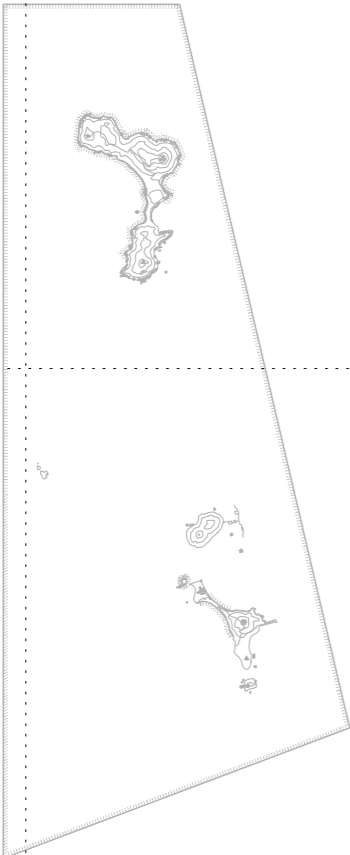
Drawing no.	214487/2/T/001	Rev.	A
Drawn	RY	Date	02/12
Checked	IL	Approved	SK
Scale	1:20000 @A1	Status	TENDER

COPYRIGHT RESERVED

路政署
HIGHWAYS DEPARTMENT
港珠澳大橋香港工程管理局
Hong Kong - Zhuhai - Macao Bridge
Hong Kong Project Management Office

Printed by : 13/2/2012
Filename : J:\214487\Record\HY_2011_03\Re-Tender (2012-02-17)\DGN\E-HY_2011_03-DRG_001-A-10.dgn

DO NOT SCALE DRAWING. CHECK ALL DIMENSIONS ON SITE.
 ALL RIGHTS RESERVED.
 © OVE ARUP & PARTNERS HONG KONG LIMITED.



NOTES

1. THIS DRAWING SHALL BE READ IN CONJUNCTION WITH DRG. NOS. 214487/2/T/131 - 133.

A	TENDER ISSUE	IL	02/12
Rev	Description	By	Date

Consultant
ARUP 奧雅納工程顧問
 Ove Arup & Partners Hong Kong Limited

Contract No. and Title:
 Contract No. HY/2011/03
 Hong Kong-Zhuhai-Macao Bridge
 Hong Kong Link Road -
 Section Between Scenic Hill and
 Hong Kong Boundary Crossing Facilities

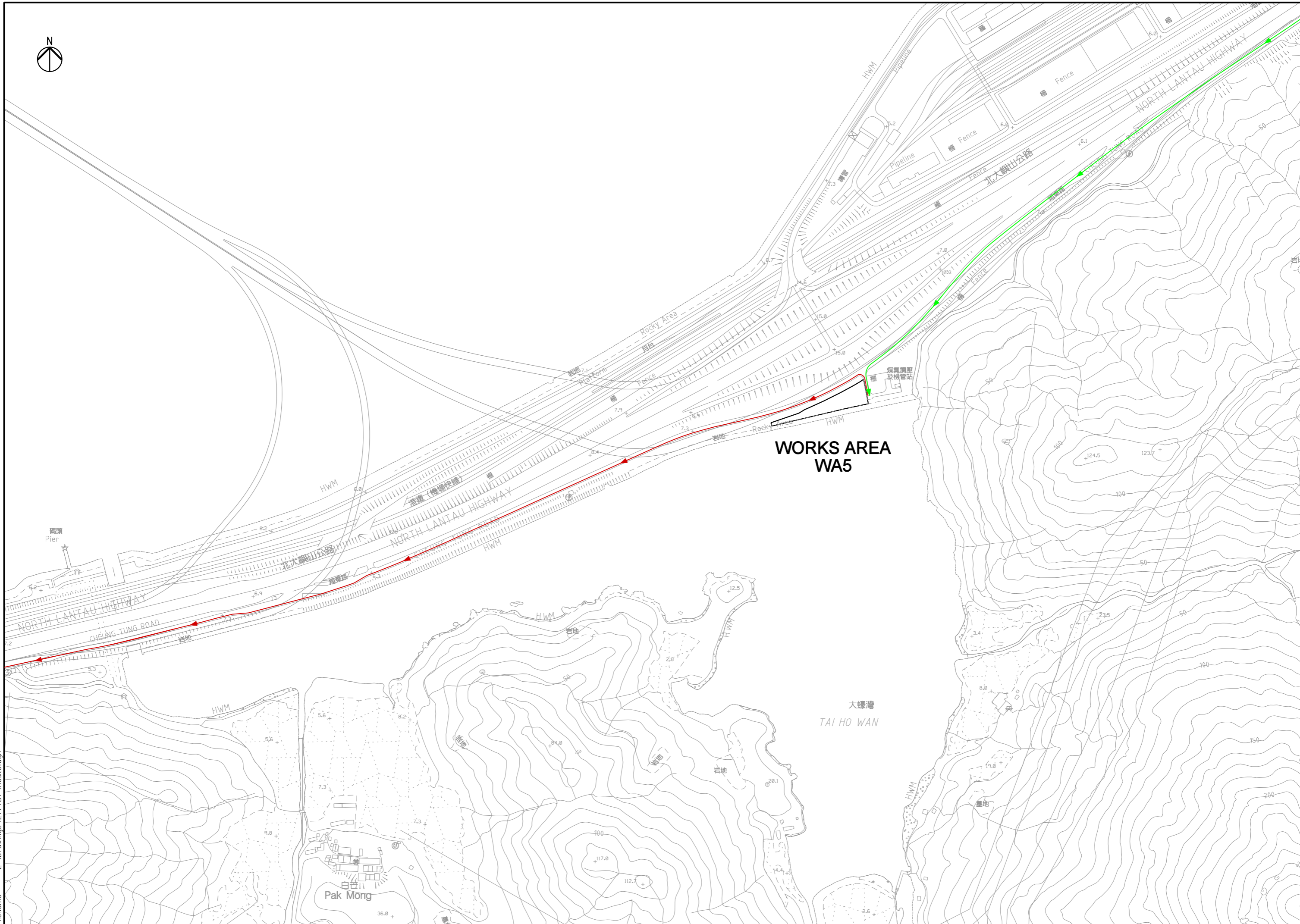
Drawing title
**WORKS AREAS
 KEY PLAN**

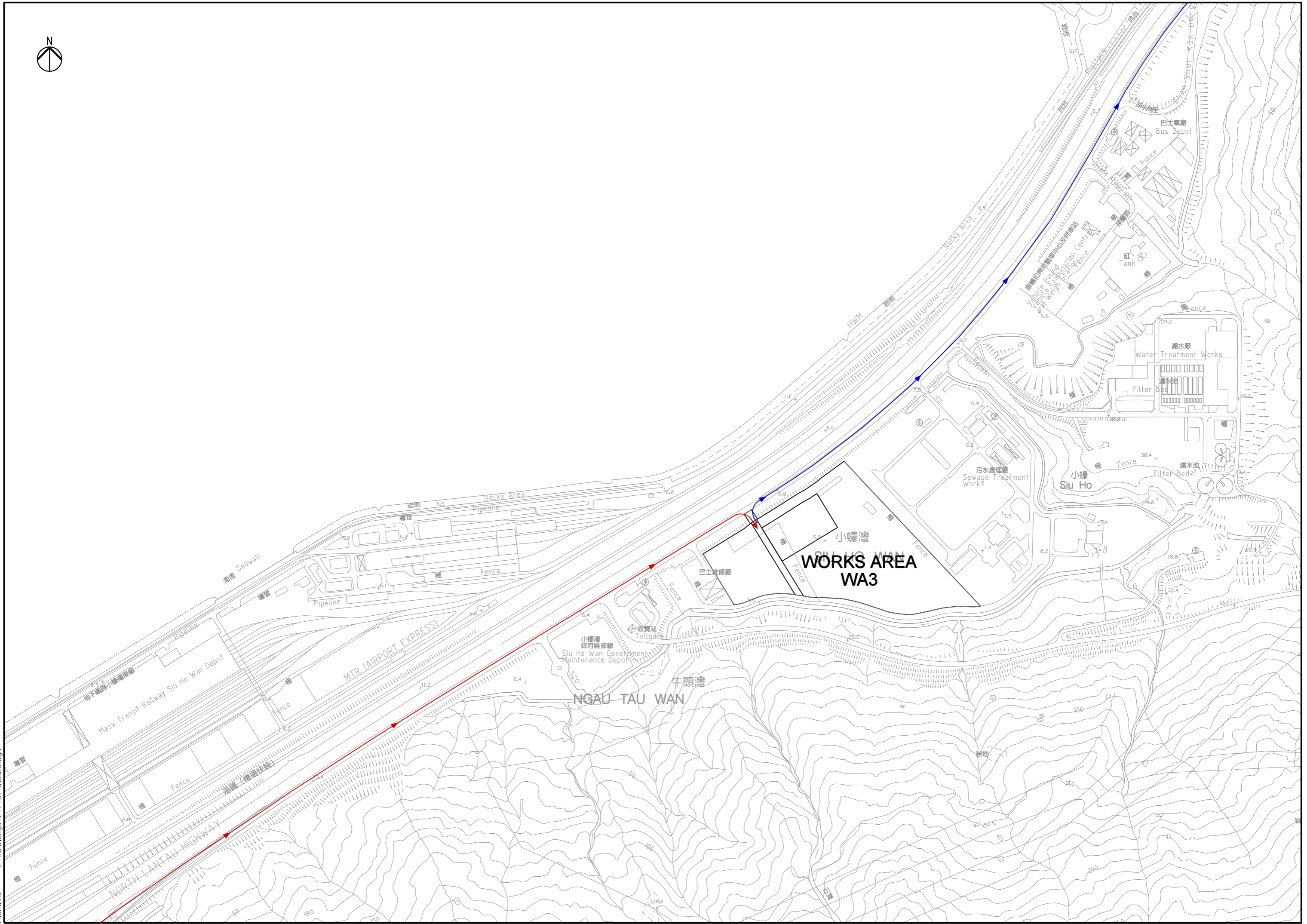
Drawing no.		214487/2/T/130		Rev.	A
Drawn	Date	Checked	Approved		
RY	02/12	IL	SK		
Scale	1:30000 @A1		Status	TENDER	

COPYRIGHT RESERVED



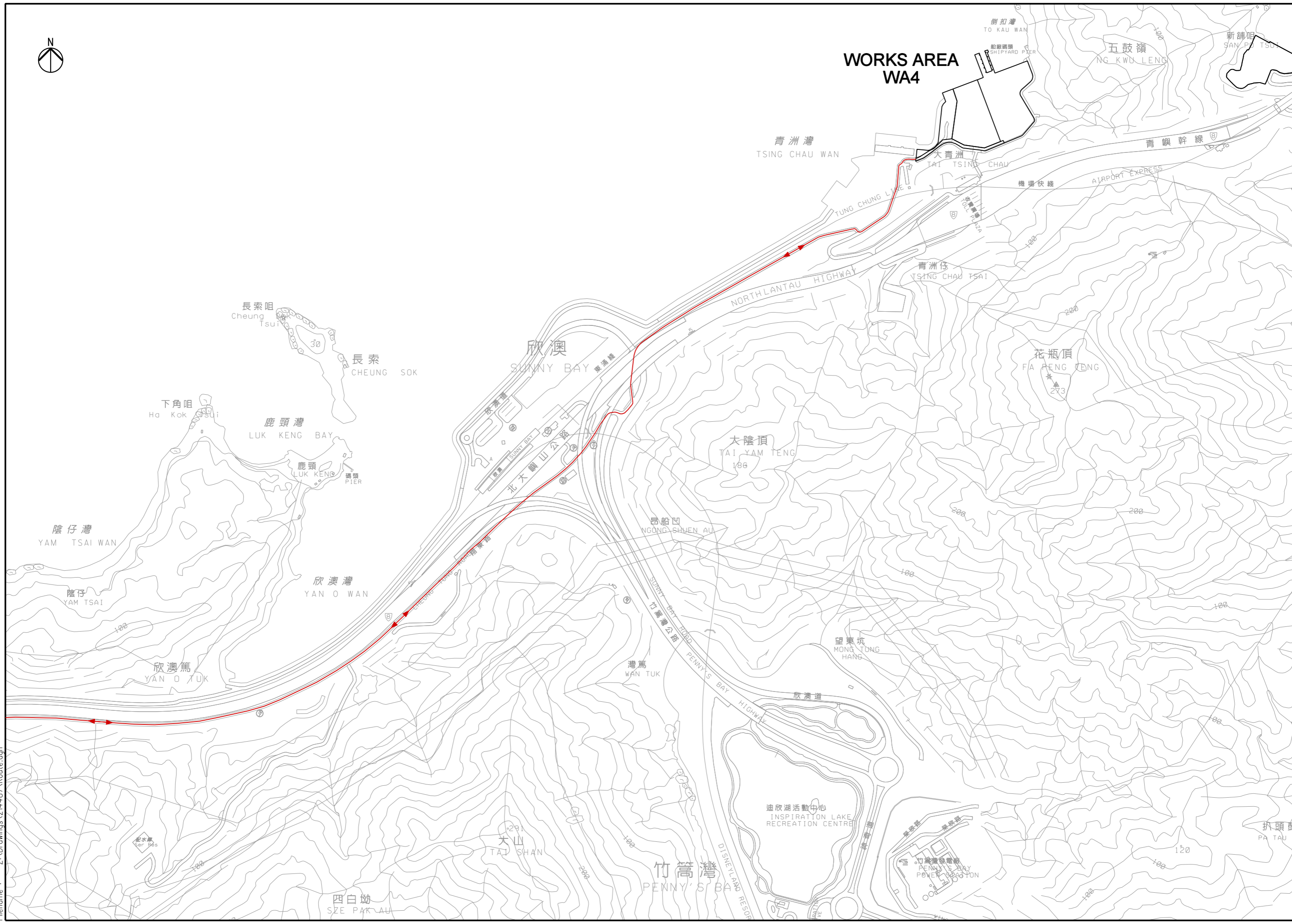
Printed by : 13/2/2012
 Filename : J:\214487\Record\HY_2011_03\Re-Tender (2012-02-17)\DGN\HY_2011_03-DRG_130-A-10.dgn





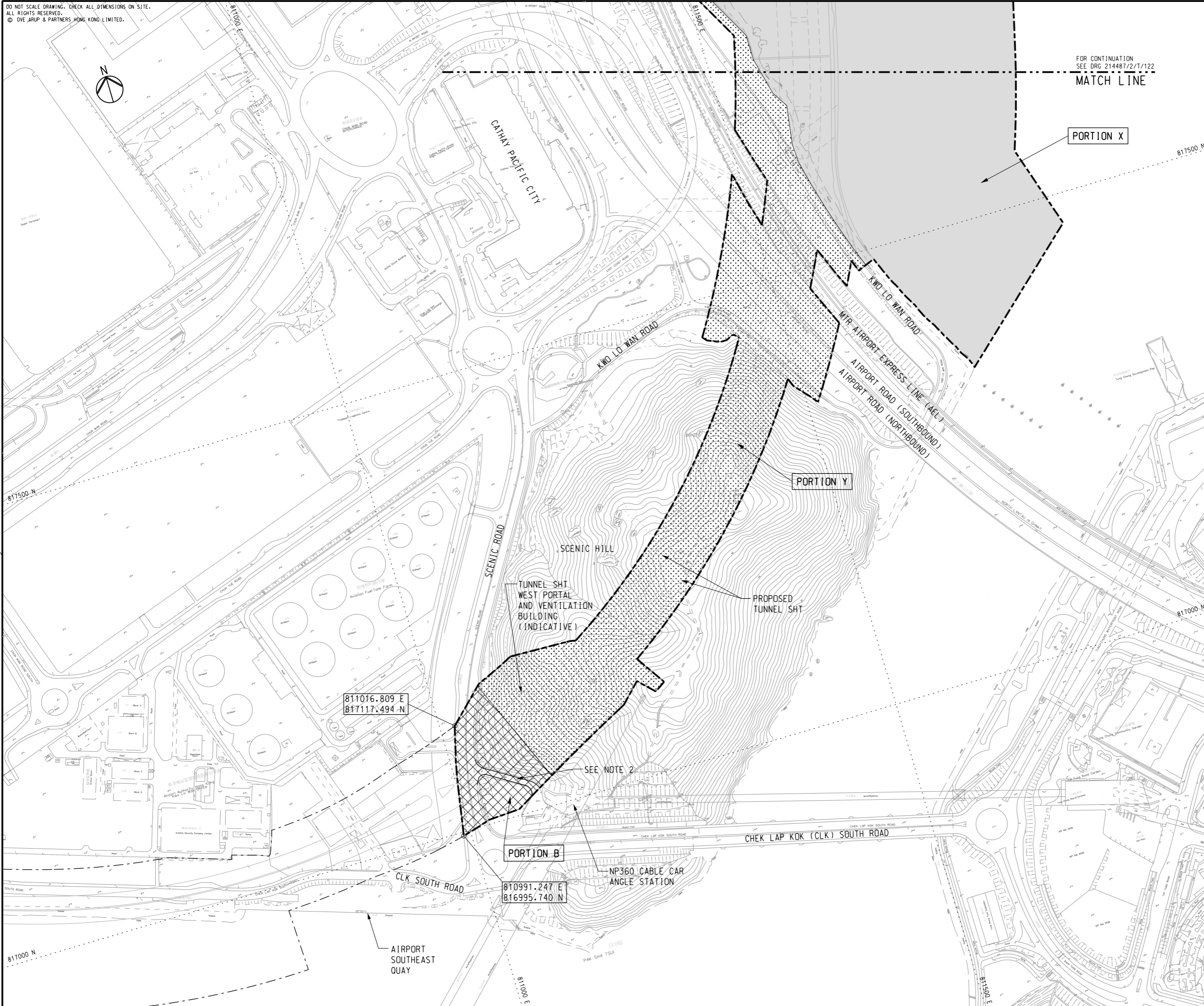


WORKS AREA WA4



Printed by : 28/5/2012
Filename : Z:\Drawings\214487\Route.dgn

DO NOT SCALE DRAWING. CHECK ALL DIMENSIONS ON SITE.
ALL RIGHTS RESERVED.
© OVE ARUP & PARTNERS HONG KONG LIMITED.



FOR CONTINUATION
SEE DRG 214487/2/T/122
MATCH LINE

PORTION X

PORTION Y

PORTION B

811016.809 E
817117.494 N

810991.247 E
816995.740 N

SEE NOTE 2

AIRPORT
SOUTHEAST
QUAY

- NOTES**
- FOR DETAILED DESCRIPTION OF PORTION OF SITE, REFER TO ER PART 2 GENERAL SITE DATA.
 - ACCESS ROAD TO NP360 CABLE CAR ANGLE STATION SHALL BE MAINTAINED AT ALL TIMES.

LEGEND

	SITE BOUNDARY
	PORTION X
	PORTION Y
	PORTION B
	PORTION C
	PORTION D1

A	TENDER ISSUE	IL	02/12
Rev	Description	By	Date

Consultant
ARUP 奧雅納工程顧問
Ove Arup & Partners Hong Kong Limited

Contract No. and Title:
Contract No. HY/2011/03
Hong Kong-Zhuhai-Macao Bridge
Hong Kong Link Road -
Section Between Scenic Hill and
Hong Kong Boundary Crossing Facilities

Drawing title
**PORTION OF SITE
(SHEET 1 OF 3)**

Drawing no. 214487/2/T/121		Rev. A	
Drawn RY	Date 02/12	Checked IL	Approved SK
Scale 1:2000 @A1	Status	TENDER	

COPYRIGHT RESERVED

路政署
HIGHWAYS DEPARTMENT
港珠澳大橋香港工程管理局
Hong Kong - Zhuhai - Macao Bridge
Hong Kong Project Management Office

Printed by : 13/2/2012
Filename : J:\214487\Record\HY_2011_03\Re-Tender (2012-02-17)\DGN\NE-HY_2011_03-DRG-121-A-10.dgn

DO NOT SCALE DRAWING. CHECK ALL DIMENSIONS ON SITE.
ALL RIGHTS RESERVED.
© OVE ARUP & PARTNERS HONG KONG LIMITED.



HONG KONG INTERNATIONAL AIRPORT
SOUTH RUNWAY

PORTION Y

CIVIL AVIATION DEPARTMENT
(CAD) NEW HEADQUARTERS

FOR CONTINUATION
SEE DRG 214487/2/T/123

MATCH LINE

NOTES

1. FOR GENERAL NOTES AND LEGEND, REFER TO
DRG. NO. 214487/2/T/121.

EXISTING
DRAGONAIR
HEADQUARTERS

EXISTING
CNAC TOWER

PORTION X

MATCH LINE

FOR CONTINUATION
SEE DRG 214487/2/T/121

A	TENDER ISSUE	IL	02/12
Rev	Description	By	Date

Consultant
ARUP 奧雅納工程顧問
Ove Arup & Partners Hong Kong Limited

Contract No. and Title:
Contract No. HY/2011/03
Hong Kong-Zhuhai-Macao Bridge
Hong Kong Link Road -
Section Between Scenic Hill and
Hong Kong Boundary Crossing Facilities

Drawing title
**PORTION OF SITE
(SHEET 2 OF 3)**

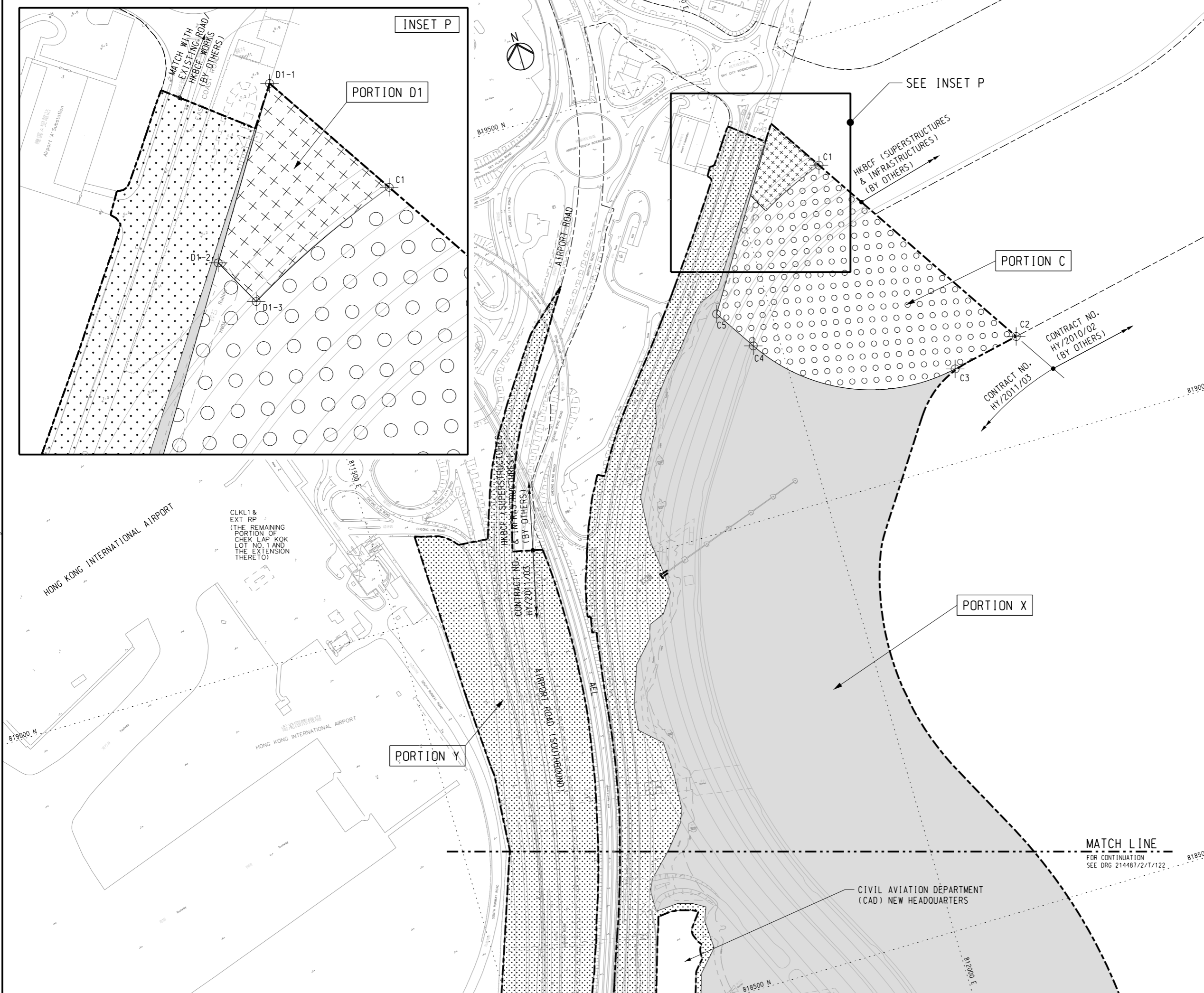
Drawing no.	214487/2/T/122		Rev.	A
Drawn	Date	Checked	Approved	
RY	02/12	IL	SK	
Scale	1:2000 @A1		Status	TENDER

COPYRIGHT RESERVED



Printed by : 13/2/2012
Filename : J:\214487\Record\HY_2011_03\Re-Tender (2012-02-17)\DGN\HY_2011_03-DRG_122-A-10.dgn

DO NOT SCALE DRAWING. CHECK ALL DIMENSIONS ON SITE.
ALL RIGHTS RESERVED.
© OVE ARUP & PARTNERS HONG KONG LIMITED.



NOTES

1. FOR GENERAL NOTES AND LEGEND, REFER TO DRG. NO. 214487/2/T/121.

SETTING OUT CO-ORDINATES OF SITE PORTION C

POINT	CO-ORDINATES	
	EASTING	NORTHING
C1	812097.481	819361.966
C2	812254.199	819116.562
C3	812178.695	819101.208
C4	811970.282	819189.551
C5	811941.125	819235.206

SETTING OUT CO-ORDINATES OF SITE PORTION D1

POINT	CO-ORDINATES	
	EASTING	NORTHING
D1-1	812059.460	819421.497
D1-2	812014.853	819351.273
D1-3	812026.200	819329.938

Rev	Description	By	Date
A	TENDER ISSUE	IL	02/12

Consultant
ARUP 奧雅納工程顧問
Ove Arup & Partners Hong Kong Limited

Contract No. and Title:
Contract No. HY/2011/03
Hong Kong-Zhuhai-Macao Bridge
Hong Kong Link Road -
Section Between Scenic Hill and
Hong Kong Boundary Crossing Facilities

Drawing title
**PORTION OF SITE
(SHEET 3 OF 3)**

Drawing no. 214487/2/T/123		Rev. A	
Drawn RY	Date 02/12	Checked IL	Approved SK
Scale 1:2000 @A1	Status TENDER	TENDER	

COPYRIGHT RESERVED

路政署
HIGHWAYS DEPARTMENT
港珠澳大橋香港工程管理局
Hong Kong - Zhuhai - Macao Bridge
Hong Kong Project Management Office

Printed by : 13/2/2012
Filename : J:\214487\Record\HY_2011_03\Re-Tender (2012-02-17)\DGN\HY_2011_03-DRG-123-A-10.dgn