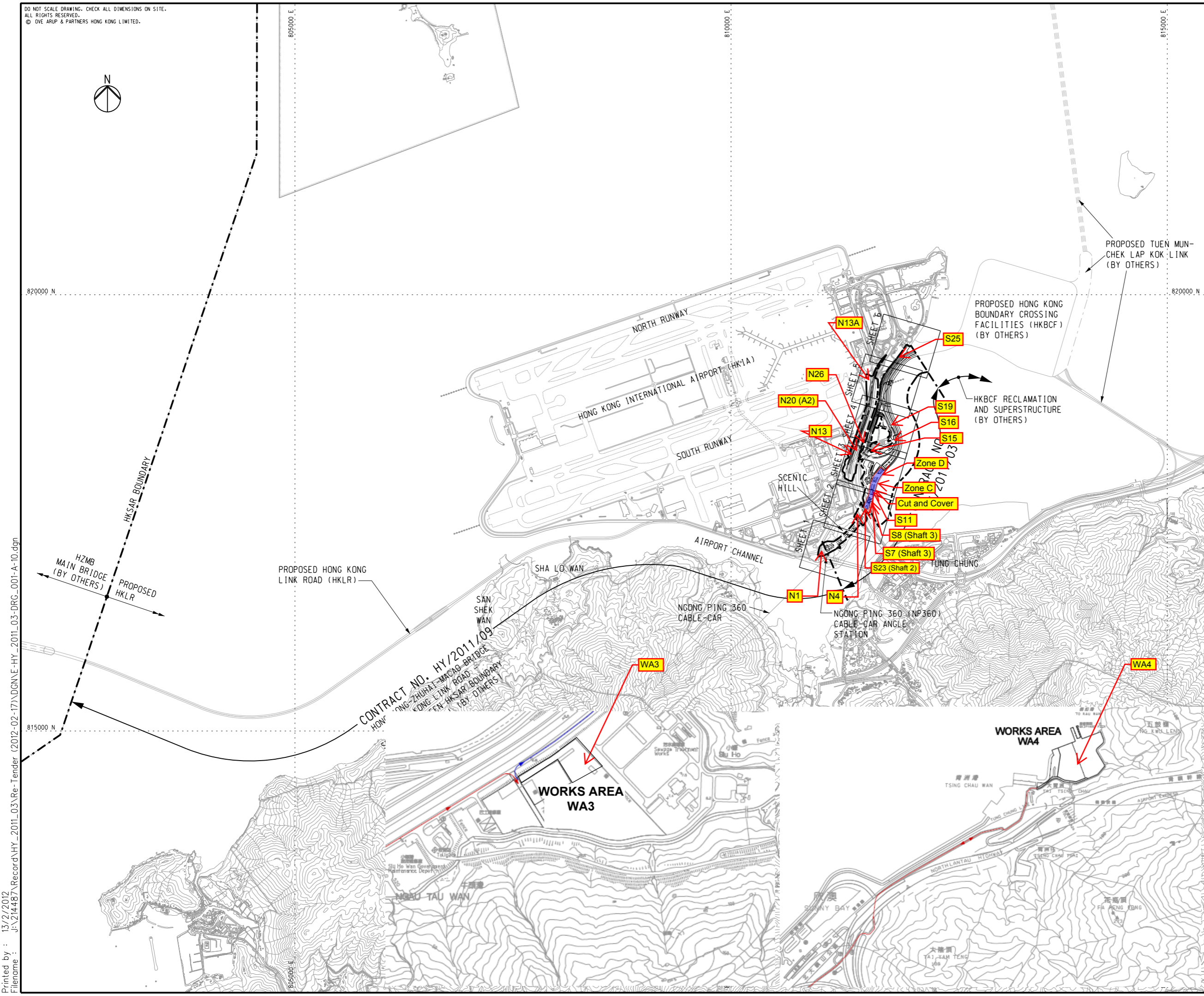


DO NOT SCALE DRAWING. CHECK ALL DIMENSIONS ON SITE.  
ALL RIGHTS RESERVED.  
© OVE ARUP & PARTNERS HONG KONG LIMITED.



**NOTES**

1. THIS DRAWING SHALL BE READ IN CONJUNCTION WITH DRG. NOS. 214487/2/T/002 - 007.

**LEGEND**

--- SITE BOUNDARY

Rev	Description	By	Date
A	TENDER ISSUE	IL	02/12

Consultant  
**ARUP** 奧雅納工程顧問  
Ove Arup & Partners Hong Kong Limited

Contract No. and Title:  
Contract No. HY/2011/03  
Hong Kong-Zhuhai-Macao Bridge  
Hong Kong Link Road -  
Section Between Scenic Hill and  
Hong Kong Boundary Crossing Facilities

Drawing title  
**GENERAL LAYOUT  
KEY PLAN**

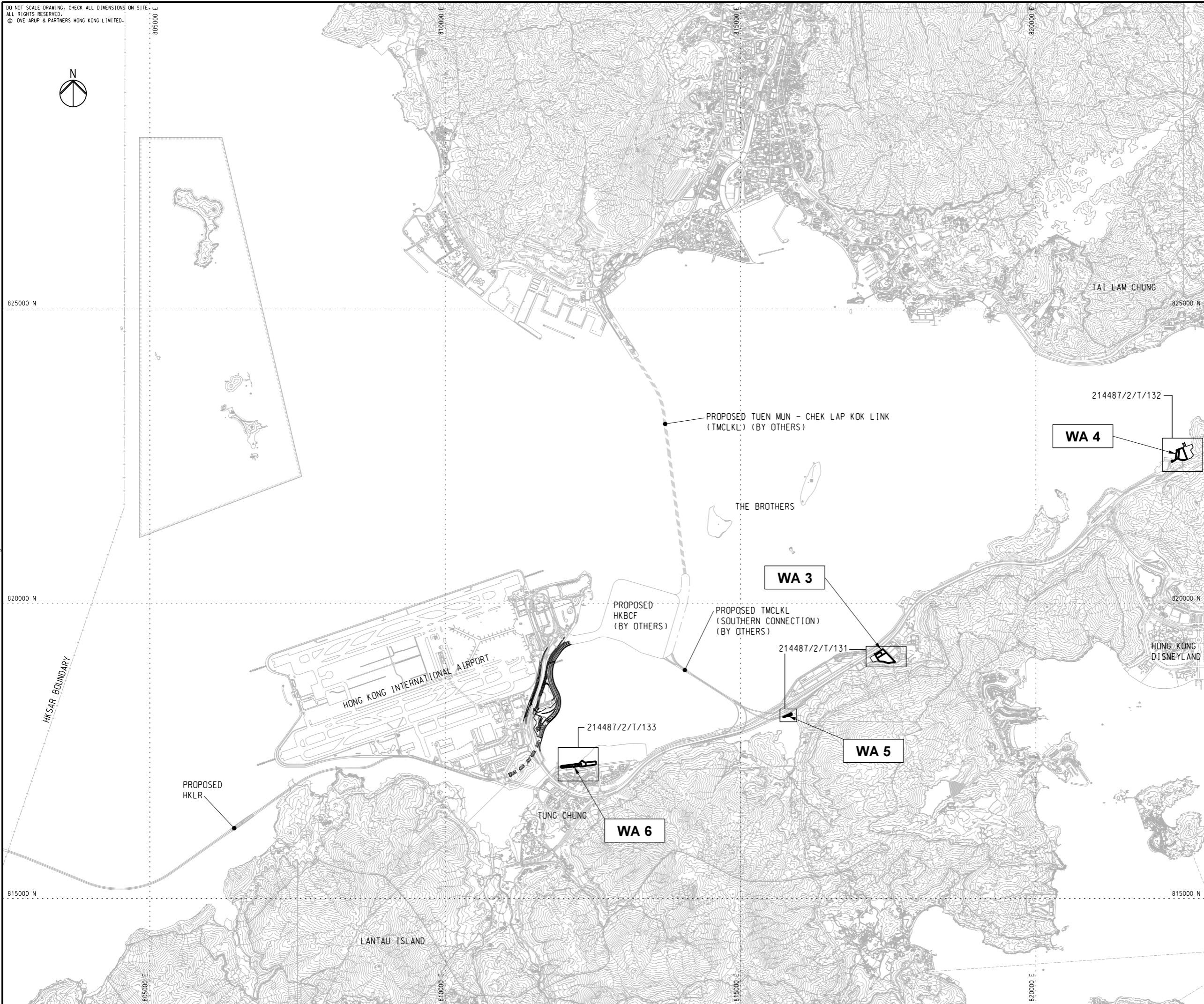
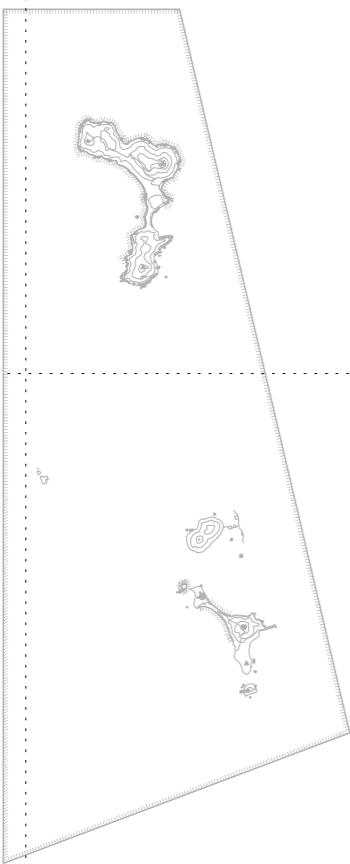
Drawing no.	214487/2/T/001	Rev.	A
Drawn	RY	Date	02/12
Checked	IL	Approved	SK
Scale	1:20000 @A1	Status	TENDER

COPYRIGHT RESERVED

路政署  
**HIGHWAYS DEPARTMENT**  
港珠澳大橋香港工程管理局  
Hong Kong - Zhuhai - Macao Bridge  
Hong Kong Project Management Office

Printed by : 13/2/2012  
Filename : J:\214487\Record\HY\_2011\_03\Re-Tender (2012-02-17)\DGN\HY\_2011\_03-DRG\_001-A-10.dgn

DO NOT SCALE DRAWING. CHECK ALL DIMENSIONS ON SITE.  
 ALL RIGHTS RESERVED.  
 © OVE ARUP & PARTNERS HONG KONG LIMITED.



**NOTES**

1. THIS DRAWING SHALL BE READ IN CONJUNCTION WITH DRG. NOS. 214487/2/T/131 - 133.

A	TENDER ISSUE	IL	02/12
Rev	Description	By	Date

Consultant  
**ARUP** 奧雅納工程顧問  
 Ove Arup & Partners Hong Kong Limited

Contract No. and Title:  
 Contract No. HY/2011/03  
 Hong Kong-Zhuhai-Macao Bridge  
 Hong Kong Link Road -  
 Section Between Scenic Hill and  
 Hong Kong Boundary Crossing Facilities

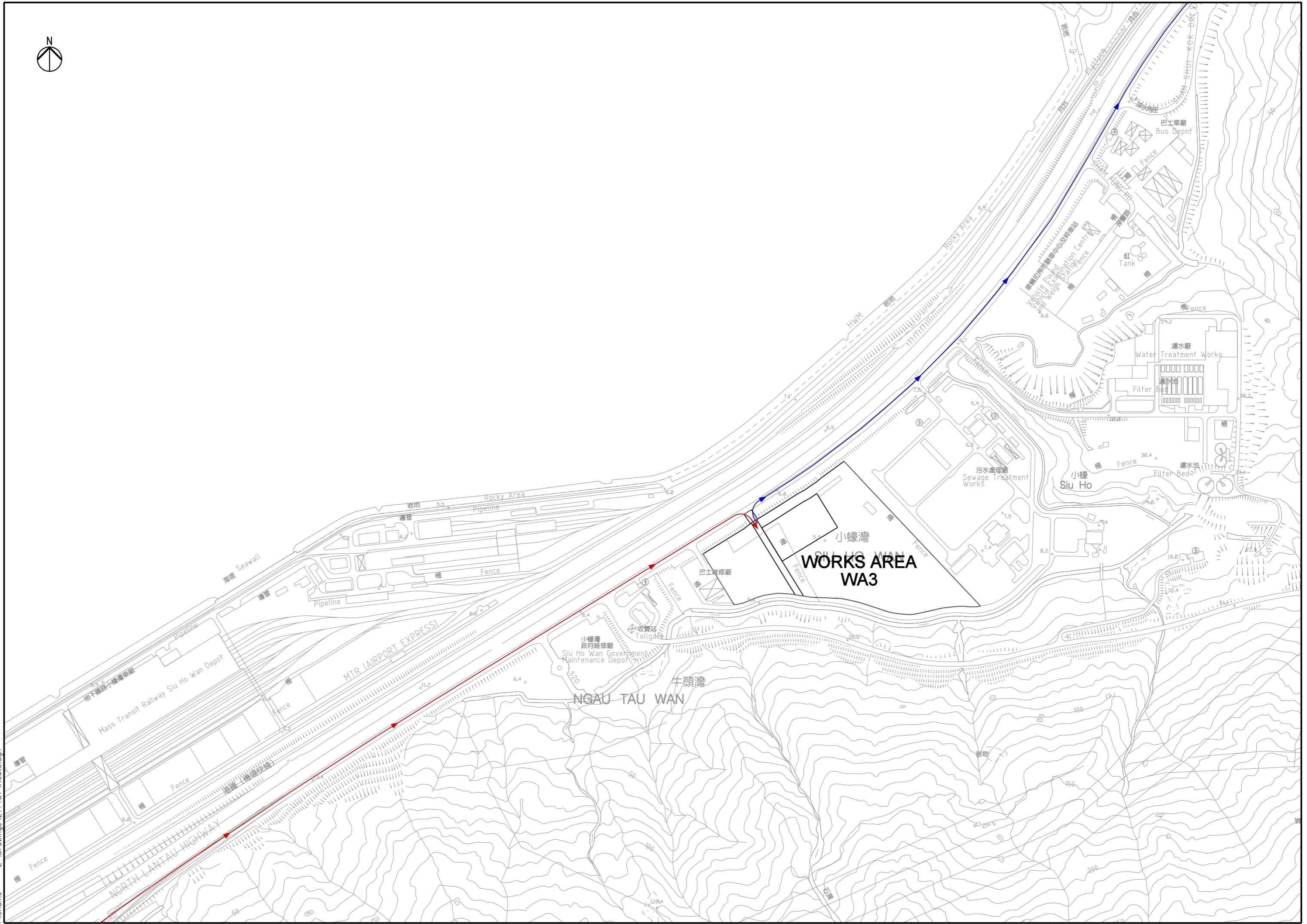
Drawing title  
**WORKS AREAS  
 KEY PLAN**

Drawing no.		214487/2/T/130		Rev.	A
Drawn	Date	Checked	Approved		
RY	02/12	IL	SK		
Scale	1:30000 @A1		Status	TENDER	

COPYRIGHT RESERVED

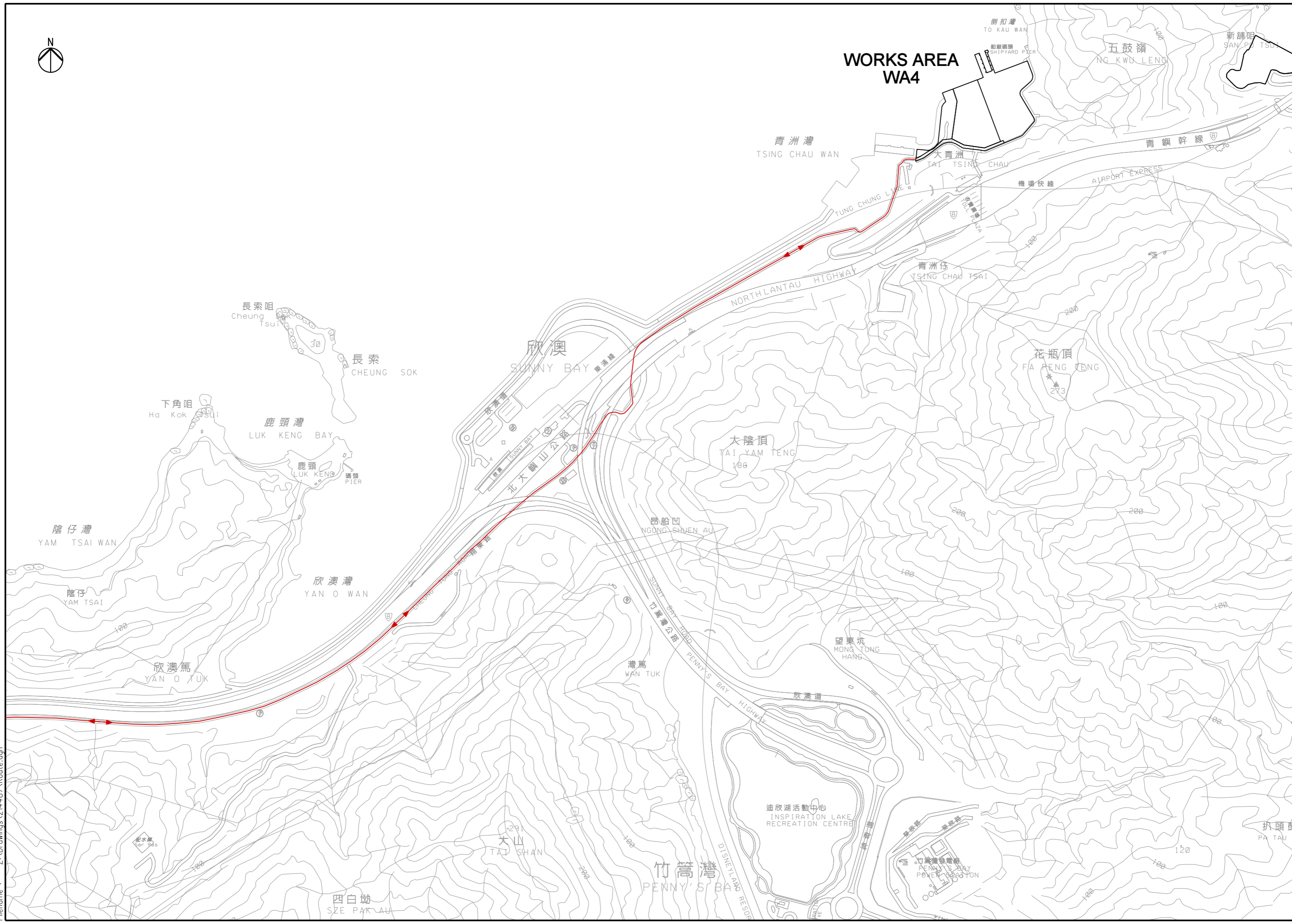
路政署  
**HIGHWAYS DEPARTMENT**  
 港珠澳大橋香港工程處  
 Hong Kong - Zhuhai - Macao Bridge  
 Hong Kong Project Management Office

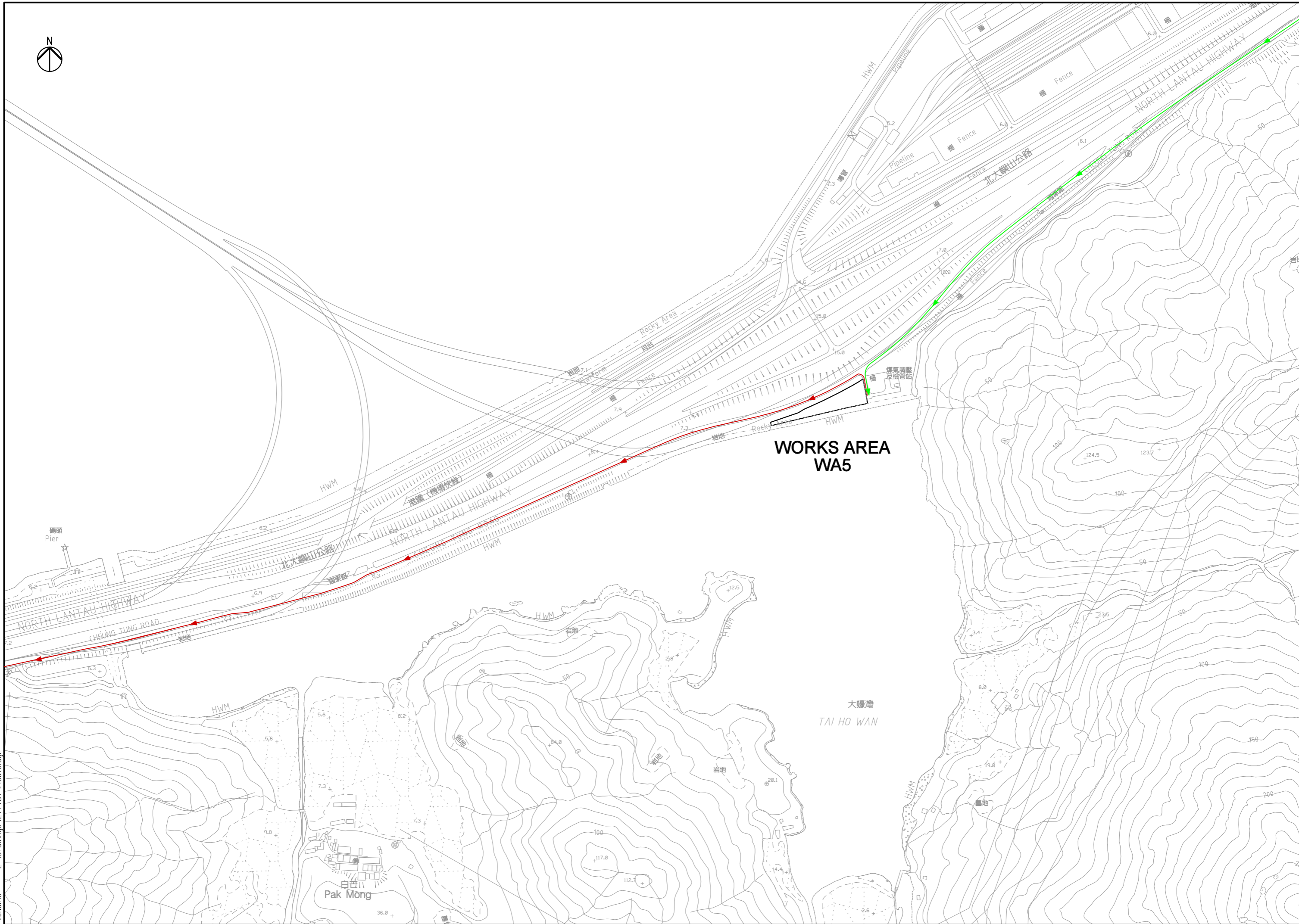
Printed by : 13/2/2012  
 Filename : J:\214487\Record\HY\_2011\_03\Re-Tender (2012-02-17)\DGN\HY\_2011\_03-DRG\_130-A-10.dgn

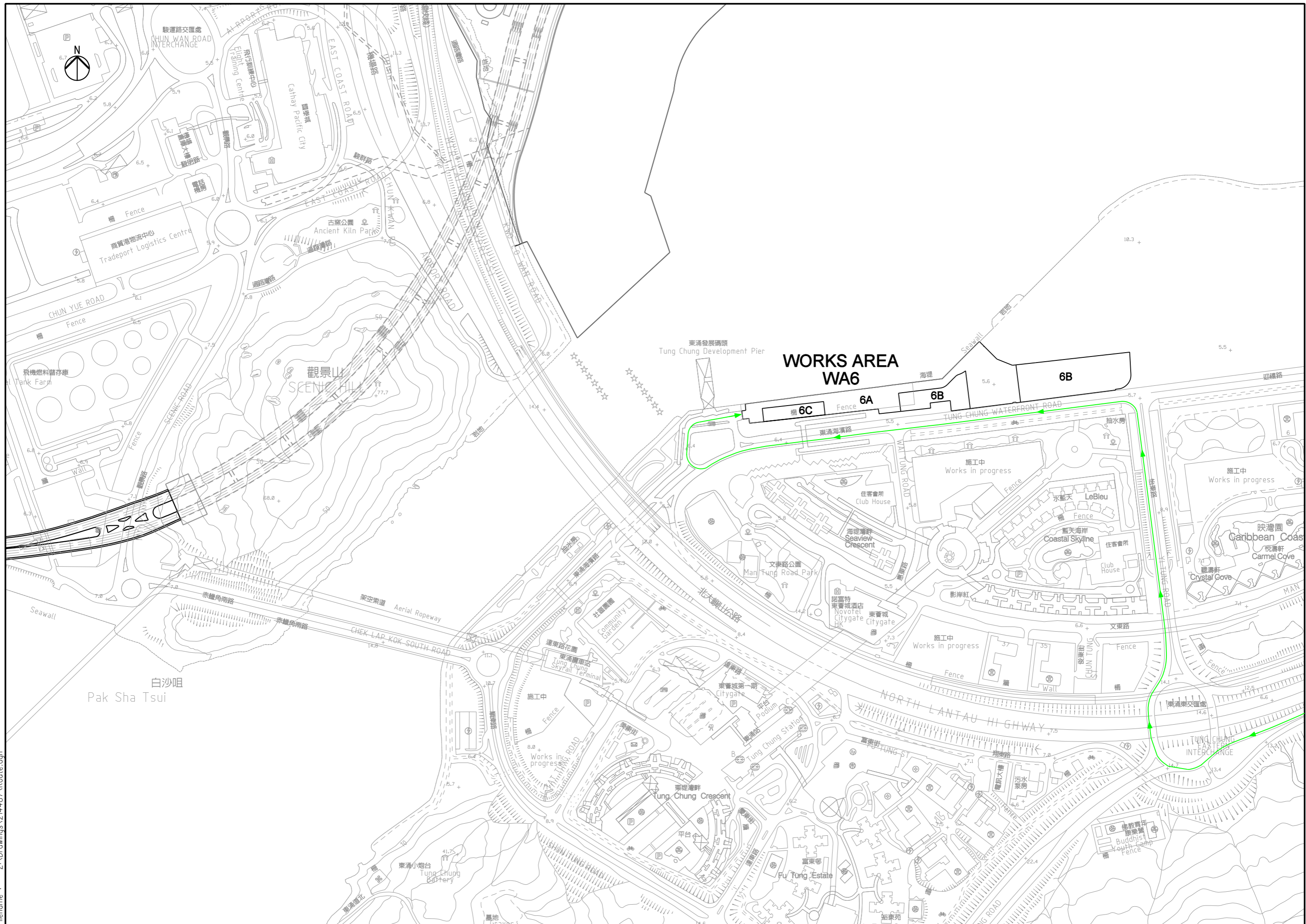




# WORKS AREA WA4







**WORKS AREA  
WA6**

**6B**

**6C**

**6A**

**6B**

白沙咀  
Pak Sha Tsui

東涌東交匯處  
TUNG CHUNG EASTERN INTERCHANGE

EASTING	NORTHING
348.796	822770.422
523.417	822694.349
423.787	822654.869
400.886	822664.001
378.668	822619.576
292.107	822608.736
259.260	822647.715

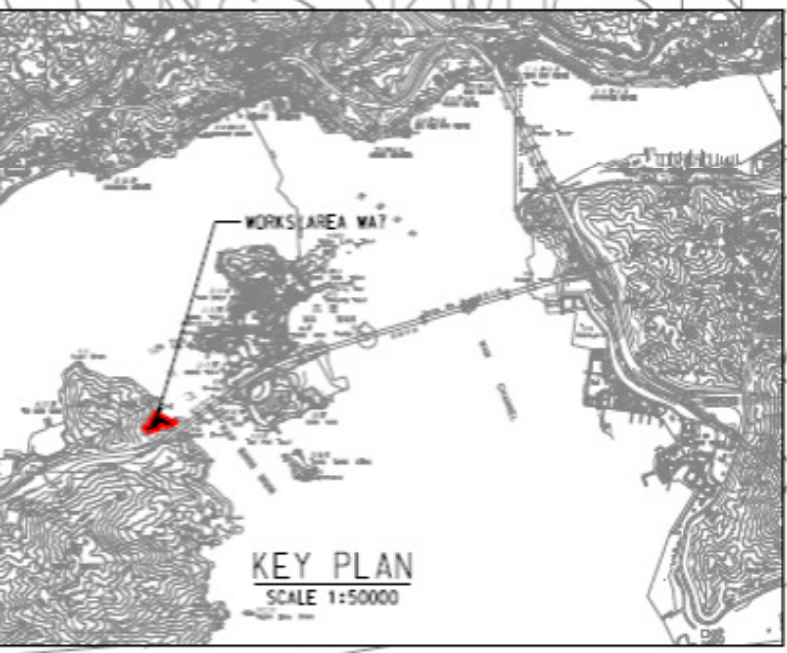


Kwai Shek



五鼓嶺

新舖咀



KEY PLAN  
SCALE 1:50000



PLAN  
SCALE 1:4000



馬角咀

Ma Kok

MA WAN

SALVATION ARMY YOUTH CAMP  
THE NEAREST NOISE SENSITIVE RECEIVER  
(WITHOUT NATURAL BARRIER)

公仔灣

KUNG TSAI WAN

橋塔

Bridge Tower

品

汲水門大橋

Kap Bridge Shui Mui  
龍蝦灣

LUNG HAN WAN

KAP

橋塔

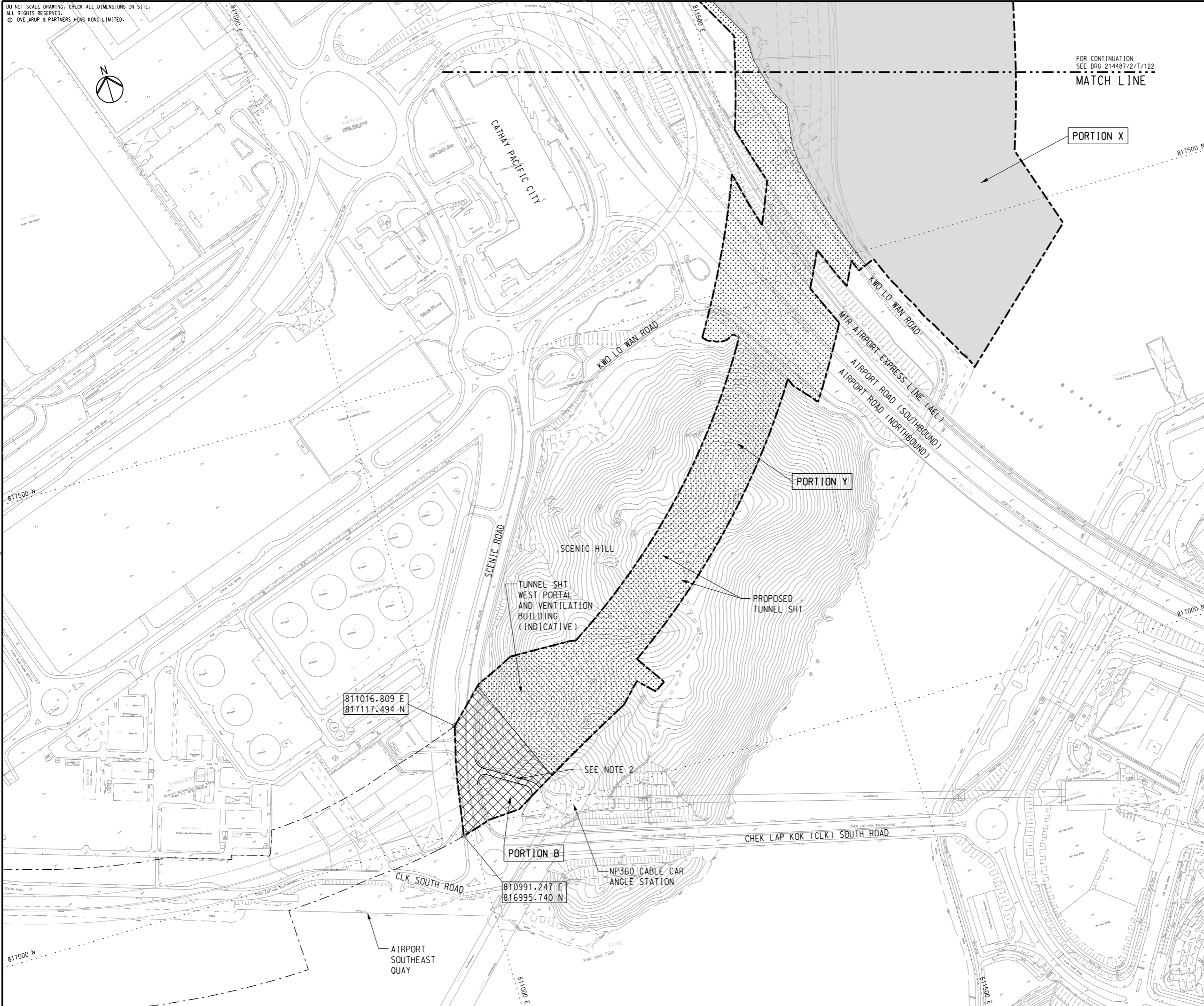
Bridge Tower

THE NEAREST NOISE SENSITIVE RECEIVER  
(WITH NATURAL BARRIER)

E=823673.587  
N=822454.027

S

DO NOT SCALE DRAWING. CHECK ALL DIMENSIONS ON SITE.  
ALL RIGHTS RESERVED.  
© OVE ARUP & PARTNERS HONG KONG LIMITED.



**NOTES**

- FOR DETAILED DESCRIPTION OF PORTION OF SITE, REFER TO ER PART 2 GENERAL SITE DATA.
- ACCESS ROAD TO NP360 CABLE CAR ANGLE STATION SHALL BE MAINTAINED AT ALL TIMES.

**LEGEND**

- SITE BOUNDARY
- PORTION X
- ▨ PORTION Y
- ▩ PORTION B
- ⊗ PORTION C
- ⊗ PORTION D1

Printed by : 13/2/2012  
 Filename : J:\214487\Record\HY\_2011\_03\Re-Tender (2012-02-17)\DGN\HY\_2011\_03-DRG-121-A-10.dgn

A	TENDER ISSUE	IL	02/12
Rev	Description	By	Date

Consultant  
**ARUP** 奧雅納工程顧問  
 Ove Arup & Partners Hong Kong Limited

Contract No. and Title:  
 Contract No. HY/2011/03  
 Hong Kong-Zhuhai-Macao Bridge  
 Hong Kong Link Road -  
 Section Between Scenic Hill and  
 Hong Kong Boundary Crossing Facilities

Drawing title  
**PORTION OF SITE  
 (SHEET 1 OF 3)**

Drawing no. 214487/2/T/121		Rev. A	
Drawn RY	Date 02/12	Checked IL	Approved SK
Scale 1:2000 @A1	Status	TENDER	

COPYRIGHT RESERVED

路政署  
**HIGHWAYS DEPARTMENT**  
 港珠澳大橋香港工程管理局  
 Hong Kong - Zhuhai - Macao Bridge  
 Hong Kong Project Management Office



DO NOT SCALE DRAWING. CHECK ALL DIMENSIONS ON SITE.  
ALL RIGHTS RESERVED.  
© OVE ARUP & PARTNERS HONG KONG LIMITED.



HONG KONG INTERNATIONAL AIRPORT  
SOUTH RUNWAY

PORTION Y

CIVIL AVIATION DEPARTMENT  
(CAD) NEW HEADQUARTERS

FOR CONTINUATION  
SEE DRG 214487/2/T/123

MATCH LINE

**NOTES**

1. FOR GENERAL NOTES AND LEGEND, REFER TO  
DRG. NO. 214487/2/T/121.

EXISTING  
DRAGONAIR  
HEADQUARTERS

EXISTING  
CNAC TOWER

PORTION X

MATCH LINE

FOR CONTINUATION  
SEE DRG 214487/2/T/121

A	TENDER ISSUE	IL	02/12
Rev	Description	By	Date

Consultant  
**ARUP** 奧雅納工程顧問  
Ove Arup & Partners Hong Kong Limited

Contract No. and Title:  
Contract No. HY/2011/03  
Hong Kong-Zhuhai-Macao Bridge  
Hong Kong Link Road -  
Section Between Scenic Hill and  
Hong Kong Boundary Crossing Facilities

Drawing title  
**PORTION OF SITE  
(SHEET 2 OF 3)**

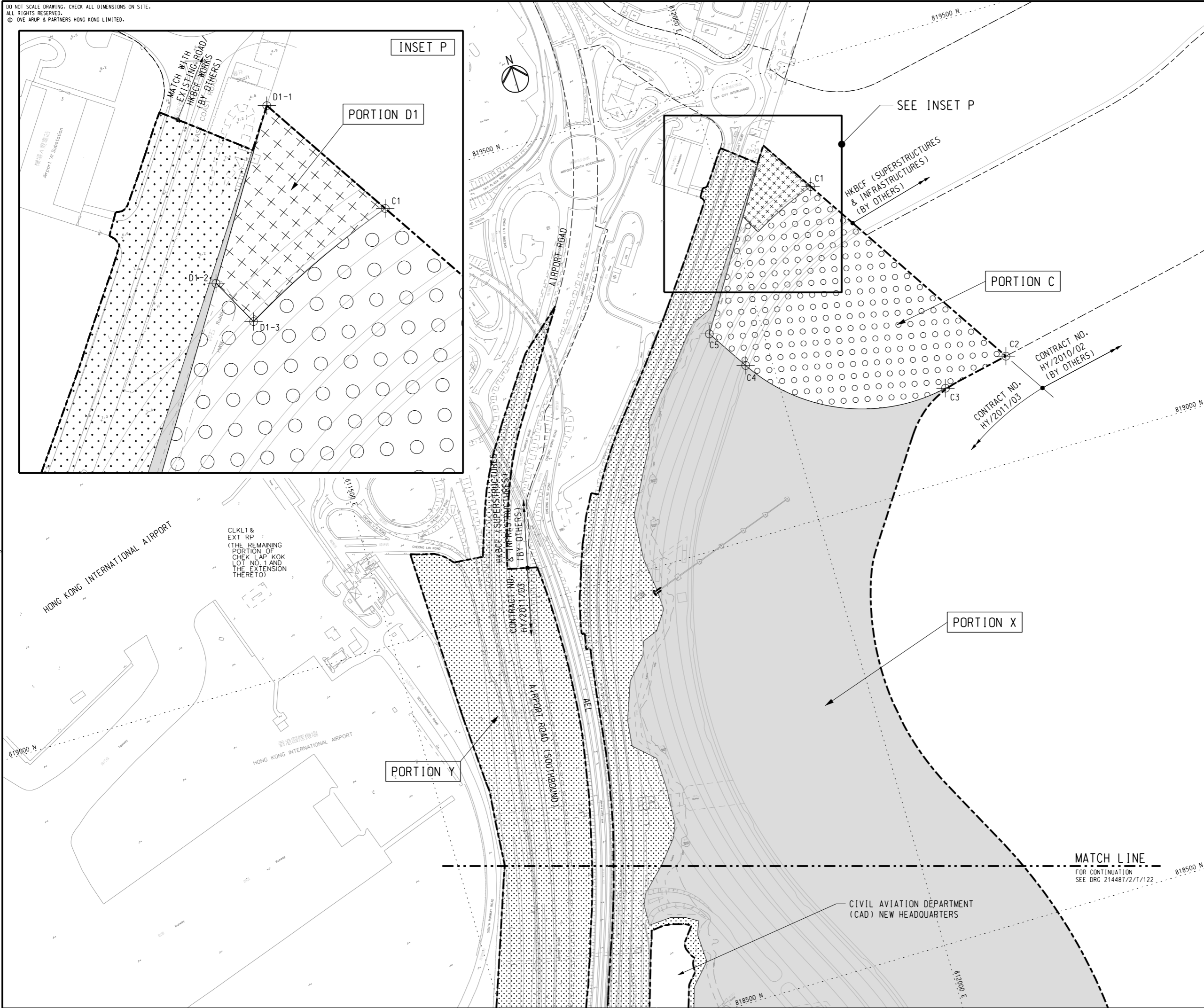
Drawing no. 214487/2/T/122		Rev. A	
Drawn RY	Date 02/12	Checked IL	Approved SK
Scale 1:2000 @A1	Status	TENDER	

COPYRIGHT RESERVED

路政署  
**HIGHWAYS DEPARTMENT**  
港珠澳大橋香港工程管理處  
Hong Kong - Zhuhai - Macao Bridge  
Hong Kong Project Management Office

Printed by : 13/2/2012  
Filename : J:\214487\Record\HY\_2011\_03\Re-Tender (2012-02-17)\DGN\HY\_2011\_03-DRG\_122-A-10.dgn

DO NOT SCALE DRAWING. CHECK ALL DIMENSIONS ON SITE.  
ALL RIGHTS RESERVED.  
© OVE ARUP & PARTNERS HONG KONG LIMITED.



**NOTES**

1. FOR GENERAL NOTES AND LEGEND, REFER TO DRG. NO. 214487/2/T/121.

**SETTING OUT CO-ORDINATES OF SITE PORTION C**

POINT	CO-ORDINATES	
	EASTING	NORTHING
C1	812097.481	819361.966
C2	812254.199	819116.562
C3	812178.695	819101.208
C4	811970.282	819189.551
C5	811941.125	819235.206

**SETTING OUT CO-ORDINATES OF SITE PORTION D1**

POINT	CO-ORDINATES	
	EASTING	NORTHING
D1-1	812059.460	819421.497
D1-2	812014.853	819351.273
D1-3	812026.200	819329.938

Rev	Description	By	Date
A	TENDER ISSUE	IL	02/12

Consultant  
**ARUP** 奧雅納工程顧問  
Ove Arup & Partners Hong Kong Limited

Contract No. and Title:  
Contract No. HY/2011/03  
Hong Kong-Zhuhai-Macao Bridge  
Hong Kong Link Road -  
Section Between Scenic Hill and  
Hong Kong Boundary Crossing Facilities

Drawing title  
**PORTION OF SITE  
(SHEET 3 OF 3)**

Drawing no. 214487/2/T/123		Rev. A	
Drawn RY	Date 02/12	Checked IL	Approved SK
Scale 1:2000 @A1	Status TENDER		

COPYRIGHT RESERVED  
**路政署 HIGHWAYS DEPARTMENT**  
港珠澳大橋香港工程處  
Hong Kong - Zhuhai - Macao Bridge  
Hong Kong Project Management Office

Printed by : 13/2/2012  
Filename : J:\214487\Record\HY\_2011\_03\Re-Tender (2012-02-17)\DGN\HY\_2011\_03-DRG-123-A-10.dgn