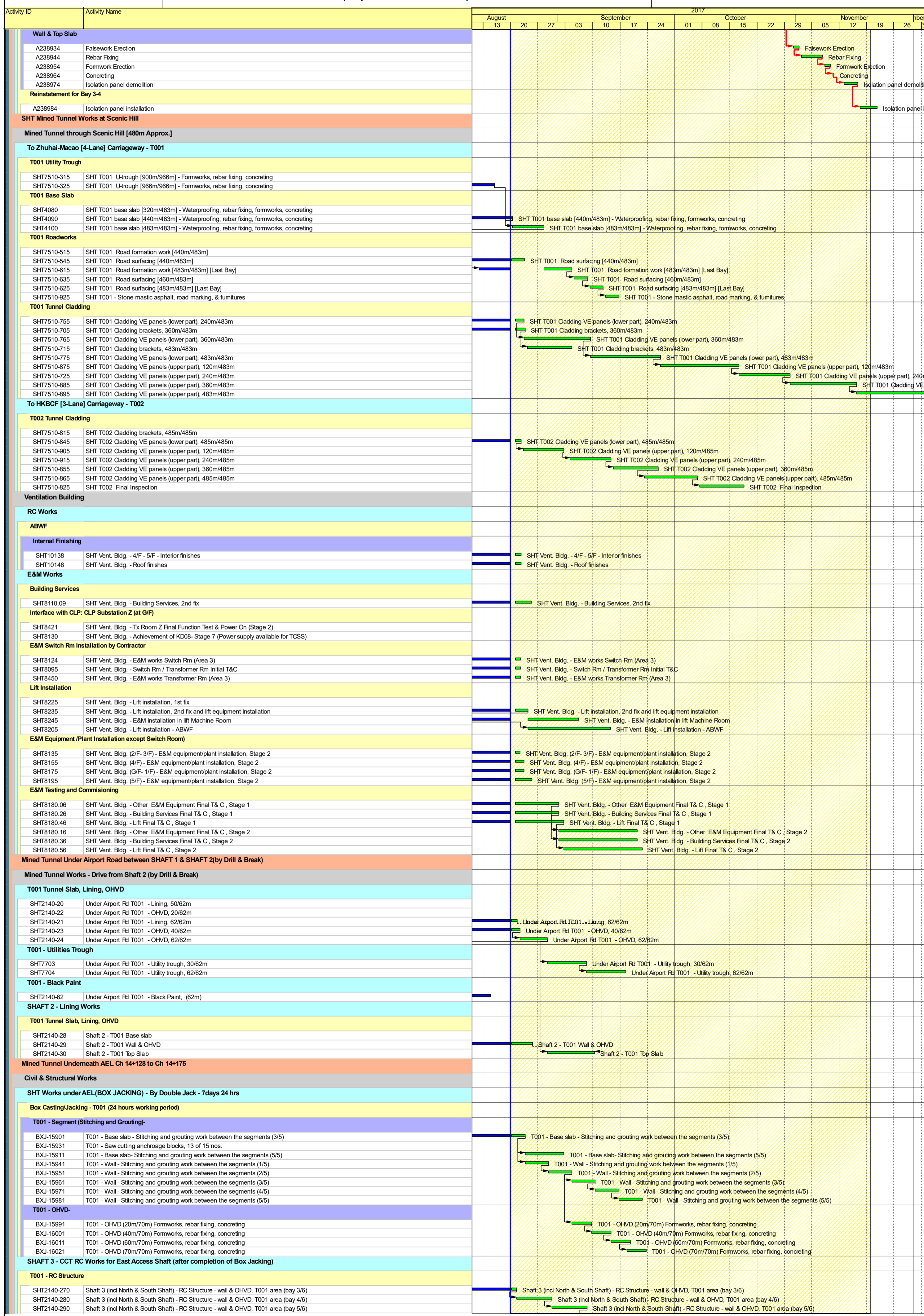


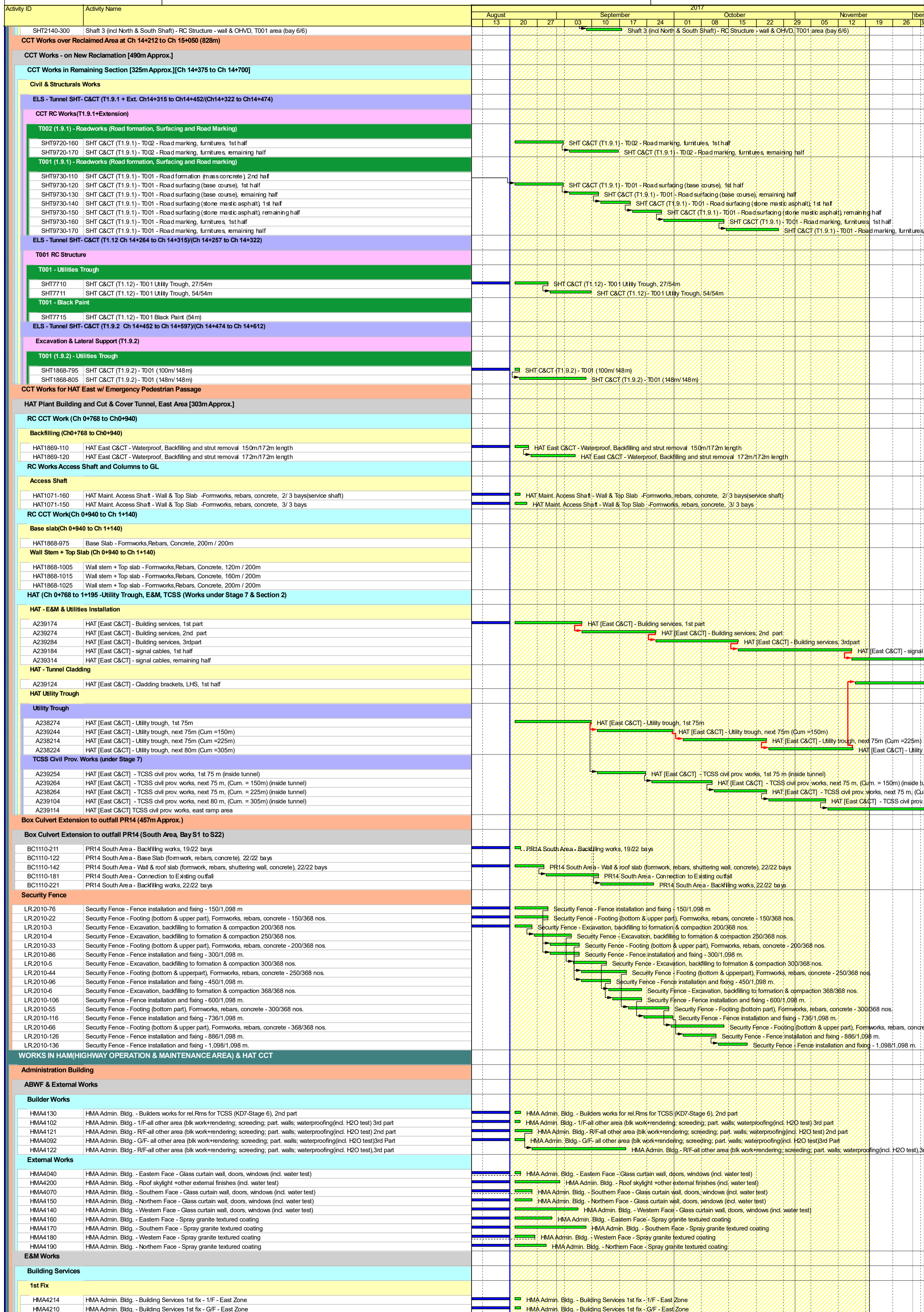
- Works Programme
- Works Programme
- ◆ Works Programme
- ◆ Milestone
- ◆ Milestone
- Works Programme

China State Construction Engineering (Hong Kong) Ltd -
Contract No. HY/2011/03 - HZMB, Hong Kong Link Road
, Section between Scenic Hill and HKBCF

Prepared by MM			
Date	Revision	Checked	Approved
13-Sep-17		WC	SYT

中國建築工程(香港)有限公司
CHINA STATE CONSTRUCTION ENGRG. (HONG KONG) LTD.





Activity ID		Activity Name	2017													Open				
			August		September					October				November						
			13	20	27	03	10	17	24	01	08	15	22	29	05	12	19	26		
HMA4212	HMA Admin. Bldg. - Building Services 1st fix - G/F - West Zone																			
HMA4216	HMA Admin. Bldg. - Building Services 1st fix - 1/F - West Zone																			
2nd Fix																				
HMA4218	HMA Admin. Bldg. - Building Services 2nd fix - G/F - East Zone																			
HMA4220	HMA Admin. Bldg. - Building Services 2nd fix - G/F - West Zone																			
HMA4222	HMA Admin. Bldg. - Building Services 2nd fix - 1/F - East Zone																			
HMA4224	HMA Admin. Bldg. - Building Services 2nd fix - 1/F - West Zone																			
E&M Works and Interface with HY2011/09 for SHM & MMS																				
HMA1260-3	HMA Admin. Bldg. - SHM/MMS Rm - Building Services Work, 3rd Part																			
HMA1260-13	HMA Admin. Bldg. - SHM/MMS Rm - IT System + interior finishes, 3rd Part																			
HMA1260-21	HMA Admin. Bldg. - SHM/MMS Rm - Provide Access E&M Rm to Contract HY2011/09s SHM & MMS - KD5- Stage 4a																			
E&M Works for Relevant Rms and Interface with TCSS Contractor																				
HMA1275-81	HMA Admin. Bldg. - E&M relevant room for TCSS - interior finishes, 2nd part																			
HMA1275-61	HMA Admin. Bldg. - E&M relevant room for TCSS - bldg services, 2nd part																			
HMA1275-91	HMA Admin. Bldg. - Provide Access E&M Rm to TCSS Contractor - KD7- Stage 6																			
CLP Installation - Substation X																				
HMA4230	HMA Admin. Bldg. - Tx Room "X" Function Test & Power On																			
HMA4050	HMA Admin. Bldg. - Power Supply Available for TCSS Contractor (KD8 - Stage 7)																			
HyD Workshop & Store Building																				
Structure Works																				
HMA1060-1368	HMA HyD Workshop & Stores - Facade Wall, 1st half																			
HMA1060-1518	HMA HyD Workshop & Stores - Facade Wall, remaining half																			
ABWF																				
HMA1060-1288	HMA HyD Workshop & Stores - general area (blkwrk+rendering; screeding; part. walls; w/proofing incl. water test), rem half																			
HMA1060-1298	HMA HyD Workshop & Stores - Aluminum grille, doors, windows, 1st half																			
HMA1060-1538	HMA HyD Workshop & Stores - Canopy (install frame), 1st half																			
HMA1060-1308	HMA HyD Workshop & Stores - Aluminum grille, doors, windows, remaining half																			
HMA1060-1548	HMA HyD Workshop & Stores - Canopy (install frame), remaining half																			
HMA1060-1558	HMA HyD Workshop & Stores - Canopy (install aluminum finishes), 1st half																			
HMA1060-1568	HMA HyD Workshop & Stores - Canopy (install aluminum finishes), remaining half																			
TD Workshop & Store Building																				
TD Workshop RC Structure Works																				
HMA1060-1428	HMA TD Workshop & Stores - Roof Slab + roof water test																			
TD Store RC Structure Works																				
HMA1060-1628	HMA TD Stores - Roof slab, remaining half																			
ABWF																				
HMA1060-1438	TD Workshops - Builders works for general area (blkwrk+rendering; screeding), part. walls, waterproofing																			
HMA1060-1498	TD Workshops - Canopy (install frame)																			
HMA1060-1508	TD Workshops - Glass curtain wall, doors, windows (including water test)																			
HMA1060-1608	TD Workshops & Store - Glass curtain wall, doors, windows (including water test)																			
HMA1060-1728	TD Workshops - Fitout																			
HMA1060-1698	TD Workshops - Canopy (install alum. fin.)																			
HMA1060-1748	TD Workshops - Interior finishes																			
HMA1060-1738	TD Workshops & Store - Aluminum louvers, doors																			
HMA1060-1758	TD Workshops & Store - Builders works for general area (blkwrk+rendering; screeding), part. walls, waterproofing																			
HMA1060-1768	TD Workshops & Store - Exterior painting																			
HMA1060-1778	TD Workshops & Store - Spray granite textured coating - Western face																			
HMA1060-1788	TD Workshops & Store - Spray granite textured coating - Eastern face																			
Petrol Filling Station & Attendance Office/Dangerous Goods Store																				
Petrol Filling Station - RC Works																				
HMA1060-1448	Petrol Filling Stn. & Attendance Ofc. - Fuel Tank Roof (formworks, rebars, cast-in items, concrete)																			
HMA1060-1638	Petrol Filling Stn. & Attendance Ofc. - Ground slab (formworks, rebars, cast-in items, concrete)																			
HMA1060-1648	Petrol Filling Stn. & Attendance Ofc. - Columns (formworks, rebars, cast-in items, concrete) 1st half																			
HMA1060-1658	Petrol Filling Stn. & Attendance Ofc. - Columns (formworks, rebars, cast-in items, concrete) remaining half																			
HMA1060-1668	Petrol Filling Stn. & Attendance Ofc. - Roof (formworks, rebars, cast-in items, concrete), 1st half																			
HMA1060-1678	Petrol Filling Stn. & Attendance Ofc. - Roof (formworks, rebars, cast-in items, concrete), remaining half																			
DG Store & FAO - RC Works																				
HMA1060-1268	DG Store - Column/Wall (formworks, rebars, cast-in items, concrete)																			
HMA1060-1458	DG Store - Roof Slab (formworks, rebars, concrete)																			
HMA1060-1688	DG Store - Water Tank																			
ABWF																				
HMA1060-1468	Petrol Filling Stn. & Attendance Ofc. - ABWF (blkwrk+rendering; screeding), Area 1																			
HMA1060-1708	Petrol Filling Stn. & Attendance Ofc. - ABWF (blkwrk+rendering; screeding), Area 2																			
HMA1060-1718	Petrol Filling Stn. & Attendance Ofc. - ABWF (blkwrk+rendering; screeding), Area 3																			
External Works (Roadworks etc.)																				
HMA3120	HMA - TCSS civil prov. works, 1st half																			
HMA3100	HMA - Drainage and water main, remaining half																			
HMA3140	HMA - DPS9 - Excavation																			
HMA3110	HMA - cable laying and other utilities, remaining half																			
HMA3170	HMA - DPS10 - Excavation																			
HMA3230	HMA - Vehicle retention area/Training ground site formation, 1st half																			
HMA3150	HMA - DPS9 - RC Works																			
HMA3180	HMA - DPS10 - RC Works																			
HMA3130	HMA - TCSS civil prov. works, remaining half																			
HMA3210	HMA - internal access and connecting roads, parking area, site formation and footing, 1st half																			
HMA3240	HMA - Vehicle retention area/Training ground site formation, remaining half																			
HMA3160	HMA - DPS9 - E&M Installation/T&C																			
HMA3190	HMA - DPS10 - E&M Installation/T&C																			
HMA3220	HMA - internal access and connecting roads, parking area, site formation and footing, remaining half																			
WORKS IN MIDDLE AREA CH15+050 TO 15+500 (HKLR AT GRADE, HAT MT, BRIDGE A1 & A2)																				
Reclamation Works - SWCH 0+960 TO 1+400 (AHR 20mPD) & (12.5mPD)																				
Seawall Construction (Middle Area) CH 0+980 TO CH 1+400 - 420m																				
SWCH 0+980 TO SWCH 1+030 - 50m (PR14)																				
SW1060	Middle Area - Seawall - Removal of temporary seawall and sheet pile																			
SW1490	PR14 Box culvert Extension completed																			
SW1070	Middle Area - Seawall - Profile Excavation																			
SW1080	Middle Area - Seawall - Cutting Pipe pile																			
SW1090	Middle Area - Seawall - Rock laying																			
SWCH 1+280 TO SWCH 1+400 - 120m																				
SW1140	Middle Area - Seawall - Rockfill Core																			
SW1150	Middle Area - Seawall - Underlayer Rock																			

