

**Contract No. HY/2011/03 -
Hong Kong- Zhuhai- Macao Bridge
Hong Kong Link Road Section between Scenic Hill and Hong Kong Boundary Crossing Facilities
Notifications of Environmental Quality Limits Exceedances**

Notification No.: 265s ver 1

Date of Notification: 16 January 2018

Works Inspected: Data collected from water sampling works on 8 January 2018 and the results were issued on 15 January 2018

Monitoring Location: Water Quality Monitoring Station

Parameter: ~~Dissolved Oxygen (DO)~~ Suspended Solid (SS) / Turbidity (TURB)

Action & Limit Level (AL & LL) / Measured Level:

PARAM	STATION	DEPTH	AL (mg/L)	LL (mg/L)	MEASURED AT MID-EBB TIDE (mg/L)	MEASURED AT MID-FLOOD TIDE (mg/L)
SS	IS8	DA	23.5 and 120% of upstream control station's suspended solids at the same tide of the same day (i.e. CS2(A): (see note 4) for mid ebb; CS(Mf)5: 7.13 x 120% = 8.6 for mid flood)	34.4 and 130% of upstream control station's suspended solids at the same tide of the same day (i.e. CS2(A): (see note 4) for mid ebb; CS(Mf)5: 7.13x 130% = 9.3 for mid flood)	24.9	11.4

Notes:

- 1) DA means depth average.
- 2) ***Bold Italic*** means AL exceedances.
- 3) ***Bold Italic with underline*** means LL exceedances.
- 4) Water quality monitoring was not conducted at station CS2(A) during mid ebb and mid flood tide on 8 January 2018 due to rough sea condition and safety concern.

Possible reasons for Action Level Non-compliance:

On 8 January 2018, an Action Level exceedance of suspended solid was recorded at station IS8 during mid-ebb tide. The exceedance has been investigated and is considered unlikely to be related to the contract works due to the following reasons:

1. Seawall construction, road and drainage construction at Zones 1 and 2; box culvert construction at Zones 2 and 3; road and drainage work, land transportation of fill material at Zone 3 were carried out within the properly deployed silt curtain as recommended in the EIA Report.
2. The ranges of suspended solid at station IS8 during the baseline monitoring are shown as below:

Station	Range of Suspended Solid (mg/L) Mid-Ebb Tide		Range of Suspended Solid (mg/L) Mid-Flood Tide	
IS8	5.5	to	25.5	5.8 to 31.3

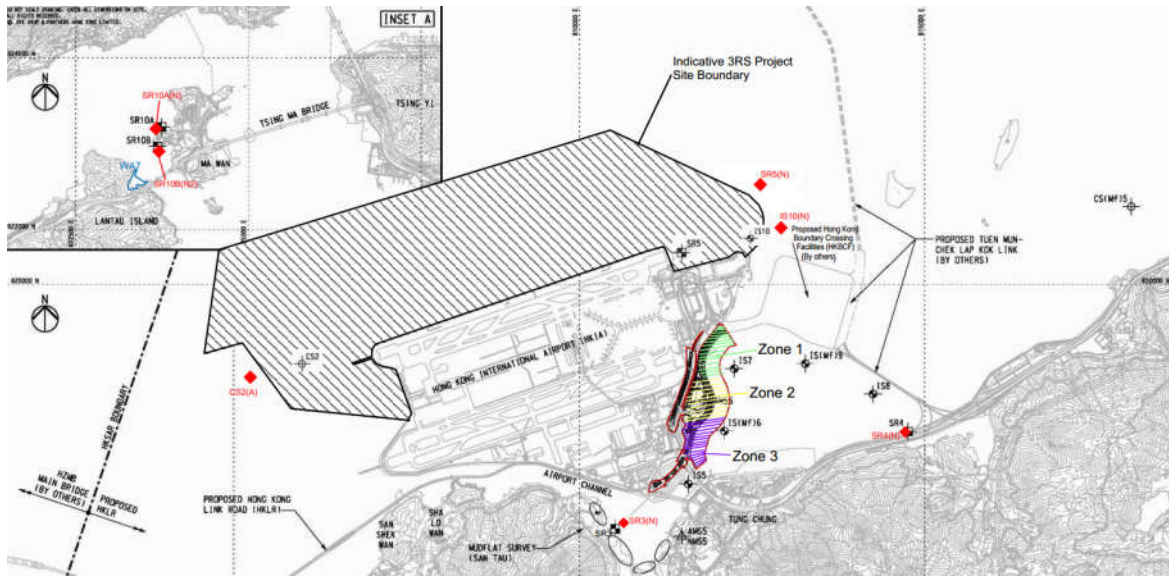
The measured value for mid-ebb tide at station IS8 was below the range of suspended solid for mid-ebb tide during baseline monitoring.

3. During sampling exercise, water appearance was observed moderate at station IS8. There was no marine transportation near station IS8 during sampling period and no marine works were conducted near station IS8 which is located outside the site boundary of HKLR03 Contract. No abnormality or malpractice for the contract works was observed during the sampling exercise.
4. There were no specific activities recorded during the monitoring period that would cause any significant impacts on the monitoring results. As such, the exceedance of suspended solid level is considered to be attributed to other external factors such as sea condition, rather than the contract works.

Actions taken/ to be taken:

As the suspended solid level recorded beyond the water quality criteria was not related to the contract works, no immediate actions are considered necessary. However, the Contractor is reminded to ensure that the silt curtain is fully maintained throughout the construction works and construction works are carried out under stringent supervision to prevent any water quality impacts to the seawater.

Location Plan:



Reviewed by : Claudine Lee

Title : ET Leader

Date : 8 February 2018

Copied to : Supervising Officer, IEC, EPD, Contractor, ENPO

**Contract No. HY/2011/03 -
Hong Kong- Zhuhai- Macao Bridge
Hong Kong Link Road Section between Scenic Hill and Hong Kong Boundary Crossing Facilities
Notifications of Environmental Quality Limits Exceedances** Notification No.: 266a ver 2

Date of Notification: 23 January 2018

Works Inspected: 1-hr TSP monitoring was undertaken on 22 January 2018

Monitoring Location: AMS5 – Ma Wan Chung Village

Parameter: 1-hour TSP monitoring

Action & Limit Level (AL & LL) / Measured Level:

PARAMETER	STATION	AL ($\mu\text{g}/\text{m}^3$)	LL ($\mu\text{g}/\text{m}^3$)	MEASURED LEVEL, $\mu\text{g}/\text{m}^3$
1-hr TSP (09:00 – 10:00 hours)	Ma Wan Chung Village (AMS5)	352	500	349
1-hr TSP (10:00 – 11:00 hours)	Ma Wan Chung Village (AMS5)	352	500	398
1-hr TSP (11:00 – 12:00 hours)	Ma Wan Chung Village (AMS5)	352	500	391

Notes: ***Bold Italic*** means AL exceedance
Bold Italic with underline means LL exceedance

Possible reason for Action or Limit Level Non-compliance:

Two Action Level exceedances of 1-hr TSP level were recorded for monitoring period from 09:00 – 12:00 hours at AMS5 – Ma Wan Chung Village, on 22 January 2018.

According to the information provided by the Contractor, the following construction activities were undertaken during the sampling period:

Zone 1

- Seawall Construction
- Road and Drainage Construction

Zone 2

- Seawall Construction
- Road and Drainage Construction

Zone 3A, 3B and 3C

- Seawall Construction
- Land Transportation of Fill Material
- Box Culvert Construction
- Road and Drainage Work

The Contractor confirmed that water spraying had been provided for fill materials to maintain the entire surface in a damp condition before loading and unloading and haul roads were sprayed with water by water trucks regularly. The fill material in dump trucks were covered to avoid generating dust. During the site visit undertaken on 26 January 2018, no significant dust emission was observed by ET at the construction site near monitoring station AMS5. Except the exceedances recorded on 22 January 2018, no Action and Limit Level exceedances of 1-hr TSP were recorded at AMS5 on other monitoring day in January 2018 (i.e 4, 10, 16 and 26 January 2018) and no Action and Limit Level exceedances of 24-hr TSP were recorded at AMS5 in January 2018.

The Air Quality Health Index (AQHI) recorded by EPD at the Tung Chung station ranged from 3 (low) to 6 (moderate) during the sampling period on 22 January 2018. The general weather condition during the monitoring period was hazy with low visibility. The hazy weather could cause higher readings of the portable dust meter.

Actions taken/ to be taken:

The Contractor had properly implemented dust control measures efficiently throughout the construction phase. Mitigation measures such as water spraying by water truck was applied regularly. No significant dust emission was observed by ET on 26 January 2018 at construction site near monitoring station AMS5. The Contractor is reminded to continuously implement the dust mitigation measures as specified in Environmental Mitigation Implementation Schedule (EMIS), Environmental Management Plan, Method Statements, General and Particular Specifications of this Contract throughout the construction phase.

Reviewed by : Claudine Lee Title : ET Leader



Date : 13 February 2018

Copied to : Supervising Officer, IEC, EPD, Contractor, ENPO



Hong Kong International Airport
香港國際機場

Chek Lap Kok Ferry Pier
赤鱸角碼頭

Zone 1
區域 1

Zone 2
區域 2

Zone 3A
區域 3A

Zone 3B
區域 3B

Zone 3C
區域 3C

Scenic Hill
觀景山

Tung Chung Pier
東涌碼頭

AMS5

Tung Chung New Town
東涌新市鎮



環境保護署

噪音管制監督

Environmental Protection Department Noise Control Authority

圖例 Legend



Zone 1
區域 1



Zone 2
區域 2



Zone 3A
區域 3A



Zone 3B
區域 3B



Zone 3C
區域 3C

**Contract No. HY/2011/03 -
 Hong Kong- Zhuhai- Macao Bridge
 Hong Kong Link Road Section between Scenic Hill and Hong Kong Boundary Crossing Facilities
 Notifications of Environmental Quality Limits Exceedances** Notification No.: 267a ver 2

Date of Notification: 23 January 2018

Works Inspected: 1-hr TSP monitoring was undertaken on 22 January 2018

Monitoring Location: AMS6 – Dragonair Building

Parameter: 1-hour TSP monitoring

Action & Limit Level (AL & LL) / Measured Level:

PARAMETER	STATION	AL ($\mu\text{g}/\text{m}^3$)	LL ($\mu\text{g}/\text{m}^3$)	MEASURED LEVEL, $\mu\text{g}/\text{m}^3$
1-hr TSP (13:00 – 14:00 hours)	Dragonair Building (AMS6)	360	500	386
1-hr TSP (14:00 – 15:00 hours)	Dragonair Building (AMS6)	360	500	400
1-hr TSP (15:00 – 16:00 hours)	Dragonair Building (AMS6)	360	500	412

Notes: ***Bold Italic*** means AL exceedance
Bold Italic with underline means LL exceedance

Possible reason for Action or Limit Level Non-compliance:

Three Action Level exceedances of 1-hr TSP level were recorded for monitoring period from 13:00 – 16:00 hours at AMS6, Dragonair Building, on 22 January 2018.

According to the information provided by the Contractor, the following construction activities were undertaken during the sampling period:

Zone 1

- Seawall Construction
- Road and Drainage Construction

Zone 2

- Seawall Construction
- Road and Drainage Construction

Zone 3A, 3B and 3C

- Seawall Construction
- Land Transportation of Fill Material
- Box Culvert Construction
- Road and Drainage Work

The Contractor confirmed that water spraying had been provided for fill materials to maintain the entire surface in a damp condition before loading and unloading and haul roads were sprayed with water by water trucks regularly. The fill material in dump trucks were covered to avoid generating dust. During the site visit undertaken on 26 January 2018, no significant dust emission was observed by ET at the construction site near monitoring station AMS6. Except the exceedances recorded on 22 January 2018, no Action and Limit Level exceedances of 1-hr TSP were recorded at AMS6 on monitoring day in January 2018 (i.e 4, 10, 16, 26 January 2018) and no Action and Limit Level exceedances of 24-hr TSP were recorded at AMS6 in January 2018.

The Air Quality Health Index (AQHI) recorded by EPD at the Tung Chung station ranged from 8 (very high) to 10+ (serious) during the sampling period on 22 January 2018. The general weather condition during the monitoring period was hazy with low visibility. The hazy weather could cause higher readings of the portable dust meter.

Actions taken/ to be taken:

The Contractor had properly implemented dust control measures efficiently throughout the construction phase. Mitigation measures such as water spraying by water truck was applied regularly. No significant dust emission was observed by ET on 26 January 2018 at construction site near monitoring station AMS6. The Contractor is reminded to continuously implement the dust mitigation measures as specified in Environmental Mitigation Implementation Schedule (EMIS), Environmental Management Plan, Method Statements, General and Particular Specifications of this Contract throughout the construction phase.

Reviewed by : Claudine Lee Title : ET Leader



Date : 13 February 2018

Copied to : Supervising Officer, IEC, EPD, Contractor, ENPO



Chek Lap Kok Ferry Pier
赤鱲角碼頭

Hong Kong International Airport
香港國際機場

AMS6



Zone 1
區域 1

Zone 2
區域 2

Zone 3A
區域 3A

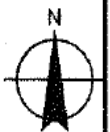
Zone 3B
區域 3B

Zone 3C
區域 3C

Scenic Hill
觀景山

Tung Chung Pier
東涌碼頭

Tung Chung New Town
東涌新市鎮



環境保護署

噪音管制監督

Environmental Protection Department Noise Control Authority

圖例 Legend



Zone 1
區域 1



Zone 2
區域 2



Zone 3A
區域 3A



Zone 3B
區域 3B



Zone 3C
區域 3C

**Contract No. HY/2011/03 -
Hong Kong- Zhuhai- Macao Bridge
Hong Kong Link Road Section between Scenic Hill and Hong Kong Boundary Crossing Facilities
Notifications of Environmental Quality Limits Exceedances**

Notification No.: 268s ver 1

Date of Notification: 29 January 2018

Works Inspected: Data collected from water sampling works on 22 January 2018 and the results were issued on 26 January 2018

Monitoring Location: Water Quality Monitoring Station

Parameter: ~~Dissolved Oxygen (DO)~~ Suspended Solid (SS) / ~~Turbidity (TURB)~~

Action & Limit Level (AL & LL) / Measured Level:

PARAM	STATION	DEPTH	AL (mg/L)	LL (mg/L)	MEASURED AT MID-EBB TIDE (mg/L)	MEASURED AT MID-FLOOD TIDE (mg/L)
SS	IS8	DA	23.5 and 120% of upstream control station's suspended solids at the same tide of the same day (i.e. CS2(A): 6.70 x 120%= 8.0 for mid ebb; CS(Mf)5: 11.70 x 120% = 14.0 for mid flood)	34.4 and 130% of upstream control station's suspended solids at the same tide of the same day (i.e. CS2(A): 6.70 x 130%= 8.7 for mid ebb; CS(Mf)5: 11.70 x 130% = 15.2 for mid flood)	9.9	24.7

Notes:

- 1) DA means depth average.
- 2) ***Bold Italic*** means AL exceedances.
- 3) ***Bold Italic with underline*** means LL exceedances.

Possible reasons for Action Level Non-compliance:

On 22 January 2018, an Action Level exceedance of suspended solid was recorded at station IS8 during mid-flood tide. The exceedance has been investigated and is considered unlikely to be related to the contract works due to the following reasons:

1. Seawall construction, road and drainage construction at Zones 1 and 2; box culvert construction at Zones 2 and 3; road and drainage work, land transportation of fill material at Zone 3 were carried out within the properly deployed silt curtain as recommended in the EIA Report.
2. The ranges of suspended solid at station IS8 during the baseline monitoring are shown as below:

Station	Range of Suspended Solid (mg/L) Mid-Ebb Tide		Range of Suspended Solid (mg/L) Mid-Flood Tide	
IS8	5.5	to	25.5	5.8 to 31.3

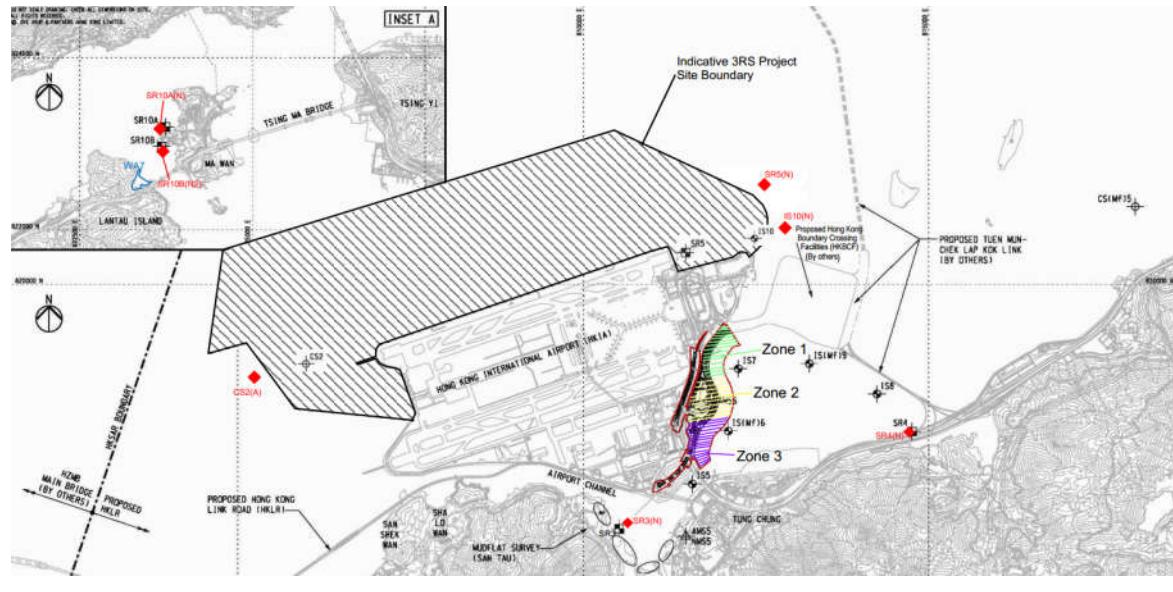
The measured value for mid-flood tide at station IS8 was below the range of suspended solid for mid-flood tide during baseline monitoring.

3. During sampling exercise, water appearance was observed moderate at station IS8. There was no marine transportation near station IS8 during sampling period and no marine works were conducted near station IS8 which is located outside the site boundary of HKLR03 Contract. No abnormality or malpractice for the contract works was observed during the sampling exercise.
4. There were no specific activities recorded during the monitoring period that would cause any significant impacts on the monitoring results. As such, the exceedance of suspended solid level is considered to be attributed to other external factors such as sea condition, rather than the contract works.

Actions taken/ to be taken:

As the suspended solid level recorded beyond the water quality criteria was not related to the contract works, no immediate actions are considered necessary. However, the Contractor is reminded to ensure that the silt curtain is fully maintained throughout the construction works and construction works are carried out under stringent supervision to prevent any water quality impacts to the seawater.

Location Plan:



Reviewed by : Claudine Lee

Title : ET Leader

Date : 8 February 2018

Copied to : Supervising Officer, IEC, EPD, Contractor, ENPO

**Contract No. HY/2011/03 -
Hong Kong- Zhuhai- Macao Bridge
Hong Kong Link Road Section between Scenic Hill and Hong Kong Boundary Crossing Facilities
Notifications of Environmental Quality Limits Exceedances**

Notification No.: 269s ver 0

Date of Notification: 1 February 2018

Works Inspected: Data collected from water sampling works on 24 January 2018 and the results were issued on 31 January 2018

Monitoring Location: Water Quality Monitoring Station

Parameter: ~~Dissolved Oxygen (DO)~~ Suspended Solid (SS) / Turbidity (TURB)

Action & Limit Level (AL & LL) / Measured Level:

PARAM	STATION	DEPTH	AL (mg/L)	LL (mg/L)	MEASURED AT MID-EBB TIDE (mg/L)	MEASURED AT MID-FLOOD TIDE (mg/L)
SS	IS8	DA	<p>23.5 and 120% of upstream control station's suspended solids at the same tide of the same day (i.e. CS2(A): 12.07 x 120% = 14.5 for mid ebb; CS(Mf)5: 8.78 x 120% = 10.5 for mid flood)</p>	<p>34.4 and 130% of upstream control station's suspended solids at the same tide of the same day (i.e. CS2(A): 12.07 x 130% = 15.7 for mid ebb; CS(Mf)5: 8.78 x 130% = 11.4 for mid flood)</p>	12.7	24.9

Notes:

- 1) DA means depth average.
- 2) ***Bold Italic*** means AL exceedances.
- 3) ***Bold Italic with underline*** means LL exceedances.

Possible reasons for Action Level Non-compliance:

On 24 January 2018, an Action Level exceedance of suspended solid was recorded at station IS8 during mid-flood tide. The exceedance has been investigated and is considered unlikely to be related to the contract works due to the following reasons:

1. Seawall construction, road and drainage construction at Zones 1 and 2; box culvert construction at Zones 2 and 3; road and drainage work, land transportation of fill material at Zone 3 were carried out within the properly deployed silt curtain as recommended in the EIA Report.
2. The ranges of suspended solid at station IS8 during the baseline monitoring are shown as below:

Station	Range of Suspended Solid (mg/L) Mid-Ebb Tide		Range of Suspended Solid (mg/L) Mid-Flood Tide	
	IS8	5.5	to	25.5

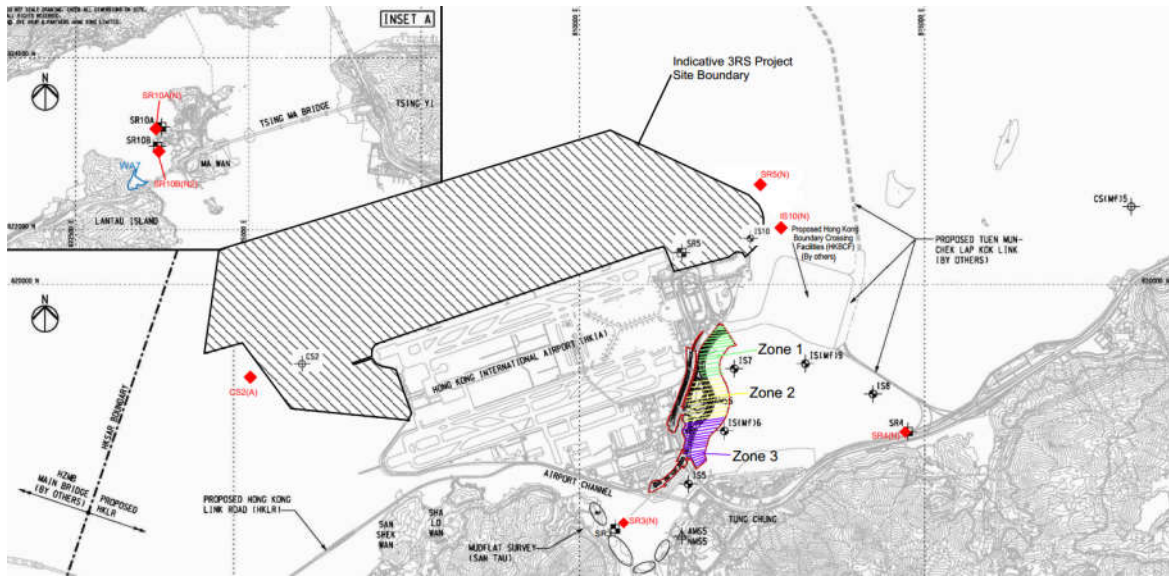
The measured value for mid-flood tide at station IS8 was below the range of suspended solid for mid-flood tide during baseline monitoring.

3. During sampling exercise, water appearance was observed clear at station IS8. There was no marine transportation near station IS8 during sampling period and no marine works were conducted station IS8 which is located outside the site boundary of HKLR03 Contract. No abnormality or malpractice for the contract works was observed during the sampling exercise.
4. There were no specific activities recorded during the monitoring period that would cause any significant impacts on the monitoring results. As such, the exceedance of suspended solid level is considered to be attributed to other external factors such as sea condition, rather than the contract works.

Actions taken/ to be taken:

As the suspended solid level recorded beyond the water quality criteria was not related to the contract works, no immediate actions are considered necessary. However, the Contractor is reminded to ensure that the silt curtain is fully maintained throughout the construction works and construction works are carried out under stringent supervision to prevent any water quality impacts to the seawater.

Location Plan:



Reviewed by : Claudine Lee

Title : ET Leader

Date : 6 February 2018

Copied to : Supervising Officer, IEC, EPD, Contractor, ENPO

Summary of Notifications of Summons and Prosecutions

Total No. of Notifications of Summons / Prosecutions Received	No. of Notifications of Summons / Prosecutions Received during Reporting Period	Status of Notifications of Summons / Prosecutions
0	0	N/A