

The EIA Ordinance Register Office
Environmental Protection Department
27/F, Southorn Centre
130 Hennessy Road
Wan Chai, Hong Kong

Our ref: SCL-COR-ENVM-ENV-043061

Attn: Mr. Keith Lam

28 December 2015

BY HAND

Dear Keith,

Shatin to Central Link - Tai Wai to Hung Hom Section [SCL (TAW-HUH)]
Environmental Permit No. EP-438/2012/I
EP Condition 2.30 – As-built Drawings for Operational Air-borne Noise Mitigation Measures
EP Condition 2.33 – As-built Drawings for Landscape and Visual Mitigation Measures

Further to our submission on the captioned (letter ref: SCL-COR-ENVM-ENV-043044, dated 4 December 2015) and your comments through e-mail dated 11 Dec 2015, the as-built drawings of Tai Wai Mei Tin Road Noise Cover under Works Contract 1101 have been revised. Please find enclosed herewith **four** hard copies and **one** electronic copy of the following for your perusal:

- 1) As-built Drawings for Operational Air-borne Noise Mitigation Measures – pursuant to Condition 2.30, the operational air-borne noise mitigation measure as required under Condition 2.29 (i.e. a ~15-meter long noise cover at south-west of TAW near Mei Tin Road as shown in Table 2 and Figure 10 of this Permit) had been installed;
- 2) As-built Drawings for Landscape and Visual Mitigation Measures – pursuant to Condition 2.33, explanatory statement is included to demonstrate compliance with the approved submission under Condition 2.13 of this Permit;

The above as-built drawings have been certified by the ET Leaders and verified by the IEC.

Should you have any queries, please feel free to contact our Ms. Lisa Poon at 3127 6295 or Ms. Karen Lui at 3127 6292.

Yours sincerely,


for Richard Kwan
Environment Manager

Encl.

c.c. HyD/RDO	-	Mr. David Chan/Ms. Amy Chow	} w/ encl. w/o encl.
MEINHARDT-	-	Mr. Fredrick Leong (IEC)	
ANEWR	-	Mr. James Choi (1101 ETL)	

RK/LP/KL/iy

MTR Corporation Limited

**Shatin to Central Link –
Tai Wai to Hung Hom Section**

As-built Drawings for
Landscape and Visual Mitigation Measures

Certified by: Fredrick Leong



Position: Independent Environmental Checker

Date: 23 December 2015

MTR Corporation Limited

**Shatin to Central Link –
Tai Wai to Hung Hom Section**

As-built Drawings for
Landscape and Visual Mitigation Measures

Certified by: Richard Kwan 

Position: Environmental Team Leader

Date: 23 December 2015

EP Condition 2.33**Submission Summary of As-Built Drawings for Landscape and Visual Mitigation Measures**

Contract No.	Contract Title	Date of Submission
1101	Modification of Ma On Shan Line Stations	28 December 2015
1102	Hin Keng Station and Approach Structures	To be submitted
1103	Hin Keng to Diamond Hill Tunnels	To be submitted
1106	Diamond Hill Station	To be submitted
1107	Diamond Hill to Kai Tak Tunnels	To be submitted
1108	Kai Tak Station and Associated Tunnels	To be submitted
1109	Stations and Tunnels of Kowloon City Section	To be submitted
1111	Hung Hom North Approach Tunnels	To be submitted
1112	Hung Hom Station and Stabling Sidings	To be submitted

MTR Corporation Limited

**Shatin to Central Link –
Tai Wai to Hung Hom Section**

As-built Drawings for
Landscape and Visual Mitigation Measures –
Tai Wai Mei Tin Road Noise Cover

Works Contract 1101
Ma On Shan Modification Works

Certified by: James Choi



Position: Environmental Team Leader

Date: 23 December 2015

1. Introduction

1.1. Requirement under Environmental Permit (EP)

Under Condition 2.33 of the Environmental Permit no. EP-438/2012/I for the Shatin to Central Link – Tai Wai to Hung Hom Section [SCL(TAW-HUH)], the as-built drawing(s) of landscape and visual mitigation measures with an explanatory statement showing the final locations, size, number and species of planting to demonstrate compliance with the approved submissions under Condition 2.13 of the SCL(TAW-HUH) EP shall be deposited with the Director of EPD. The as-built submission shall be certified by the ET Leader and verified by the IEC that the Visual, Landscape, Tree Planting and Tree Protection Plan (VLTP) approved under Condition 2.13 has been fully and properly implemented.

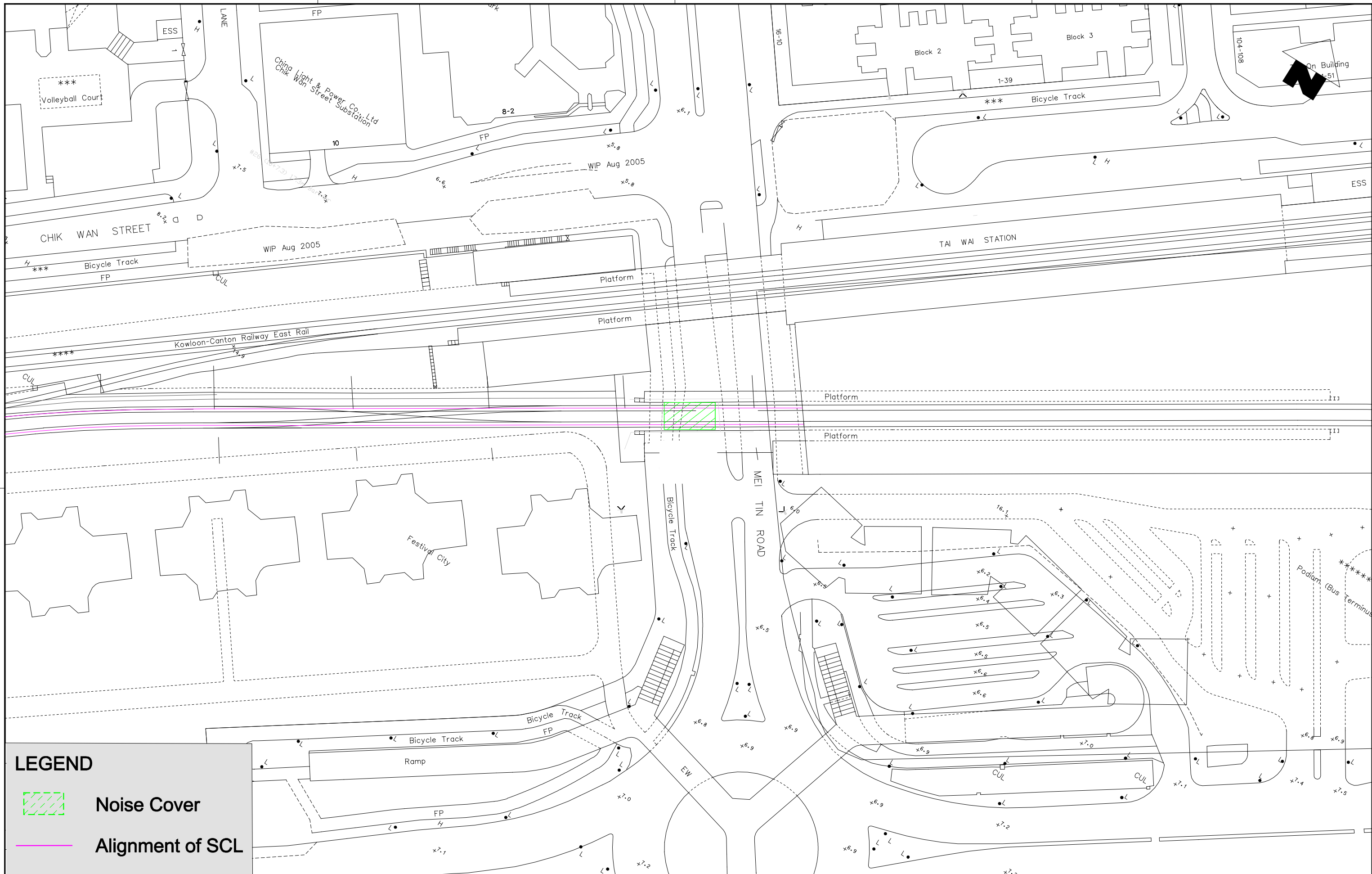
1.2. Explanatory Statement to Demonstrate Compliance

According to the approved VLTP, the scope of Contract 1101 for SCL(TAW-HUH) includes the construction of the noise cover at Mei Tin Road and no trees would be affected during construction. The proposed landscape and visual mitigation measures of Tai Wai Mei Tin Road Noise Cover which have been implemented are as follows:

The installed Mei Tin Road noise cover comprises proprietary standing seam roofing system with modular corrugated metal panel, proper rain water drainage provision and noise absorption panel. A lighter grey has been adopted for the metal roofing and associated structural elements. Colour of the cover has been duly considered to achieve a harmony effect with nearby fairface concrete roof at Tai Wai Station and to match colour with existing metal roofing of the station.

In order to improve aesthetic quality, narrow strip of corrugated metal roofing panels in green have been added to create roofing pattern and provide embellishment effect. Green panels have been framed with metal U-channels to enhance articulation when viewing from high level.

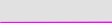
Details could be referred to the enclosed as-built drawings (drawing no.: 1101/Z/TAW/SFJ/C23/A101B and 1101/Z/TAW/SFJ/C23/A102B).



LEGEND



Noise Cover



Alignment of SCL

\$PLOTDRVL\$ \$MODEL\$ \$FILE\$
 \$PRINTED BY\$ \$USER\$ \$DATE\$ \$TIME\$

REV	DESCRIPTION	BY	DATE	APPROVED	REV	DESCRIPTION	BY	DATE	APPROVED
A	FIRST ISSUE								

DRAWN	KM
DESIGNED	KM
CHECKED	EL
APPROVED	FC
DATE	27/JAN/2011

SHATIN TO CENTRAL LINK

 ORIGINATOR

 Ove Arup & Partners

 Hong Kong Limited

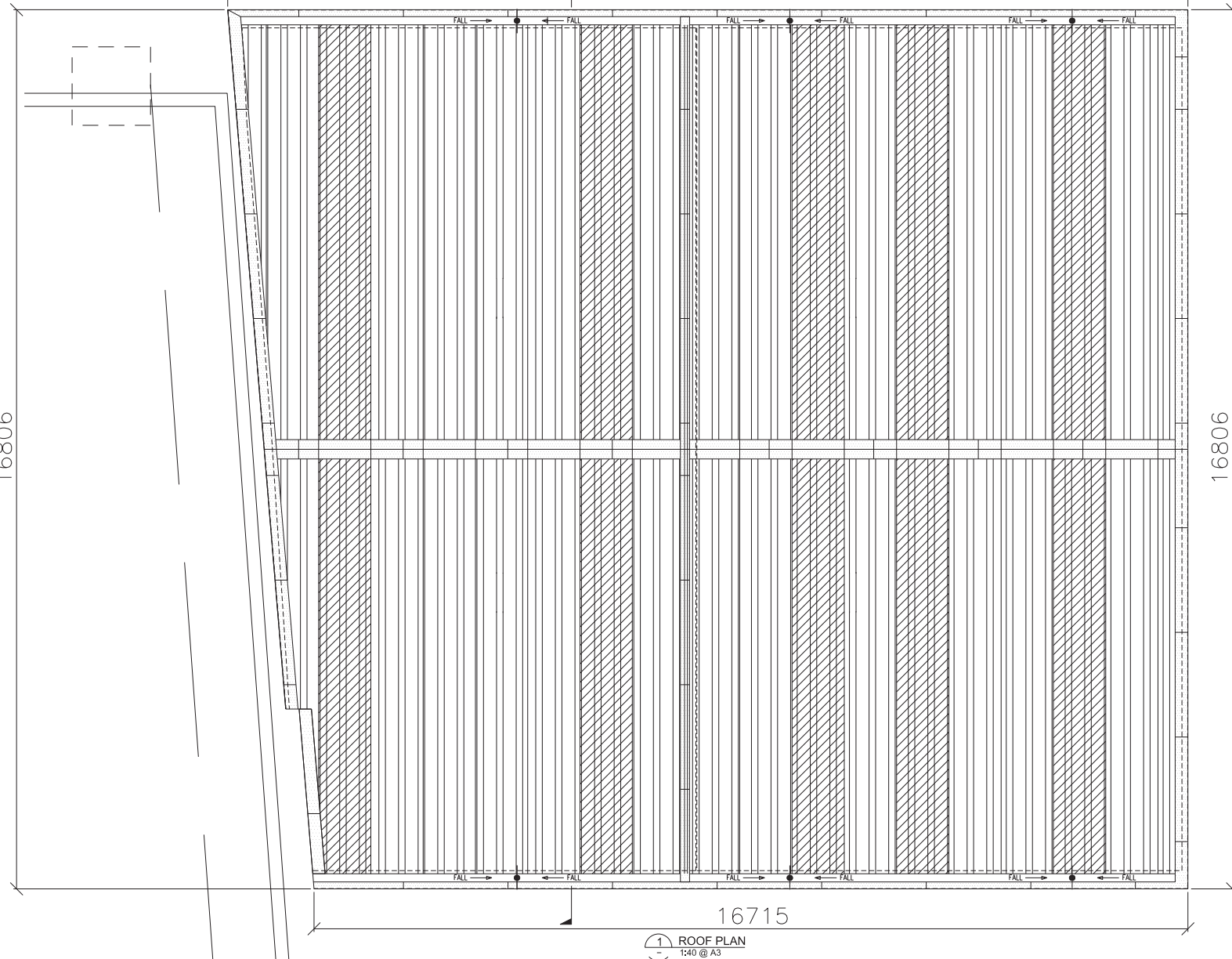
TITLE NEX 2206 - TAW TO HUH SECTION Location of Noise Cover near Mei Tin Road	
SCALE	DRAWING NO.
1 : 1000 (A3)	
REV.	

DO NOT SCALE DRAWINGS. ALL DIMENSIONS SHALL BE VERIFIED ON SITE.
 © MTR CORPORATION LIMITED 2008. COPYRIGHT IN RESPECT OF THIS DRAWING / DOCUMENT IS OWNED BY THE MTR CORPORATION LIMITED OF HONG KONG. NO REPRODUCTION OF THE DRAWING / DOCUMENT OR ANY PART BY WHATEVER MEANS IS PERMITTED WITHOUT THE PRIOR WRITTEN CONSENT OF THE MTR CORPORATION LIMITED.

18366



16806



16806

16715

1 ROOF PLAN
1:40 @ A3

REMARKS:

- 2.1 PROPRIETARY STANDING SEAM ROOFING SYSTEM WITH MODULAR CORRUGATED METAL PANEL
- 2.2 PROPER RAIN WATER DRAINAGE PROVISION
- 2.3 GREEN PANELS FRAMED WITH METAL U-CHANNELS TO ENHANCE ARTICULATION WHEN VIEWING FROM HIGH LEVEL

LEGEND:

- ROOF CLADDING PANELS (LIGHT GREY COLOR TO CODE RAL7035)
- STANDING SEAM ROOF CLADDING (LIGHT GREY COLOR TO CODE RAL7035)
- STANDING SEAM ROOF CLADDING (LIGHT GREEN COLOR TO CODE P566C)
- RAIN WATER DRAINAGE OUTLET

PRINTED BY: \$USER\$ \$DATE\$ \$TIME\$ \$PLT DIR\$: \$PLT DIR\$ \$FILE NAME\$: \$FILE NAME\$ \$PLOT FILE\$: \$PLOT FILE\$ \$PLOT FILE\$: \$PLOT FILE\$

MTR
APPROVED AS-BUILT DRAWING

BY	DATE	APPROVED	REV	DESCRIPTION
			B	REVISION PER MTR COMMENTS ON 27 NOV 2015
			A	AS BUILT SUBMISSION TO EPD

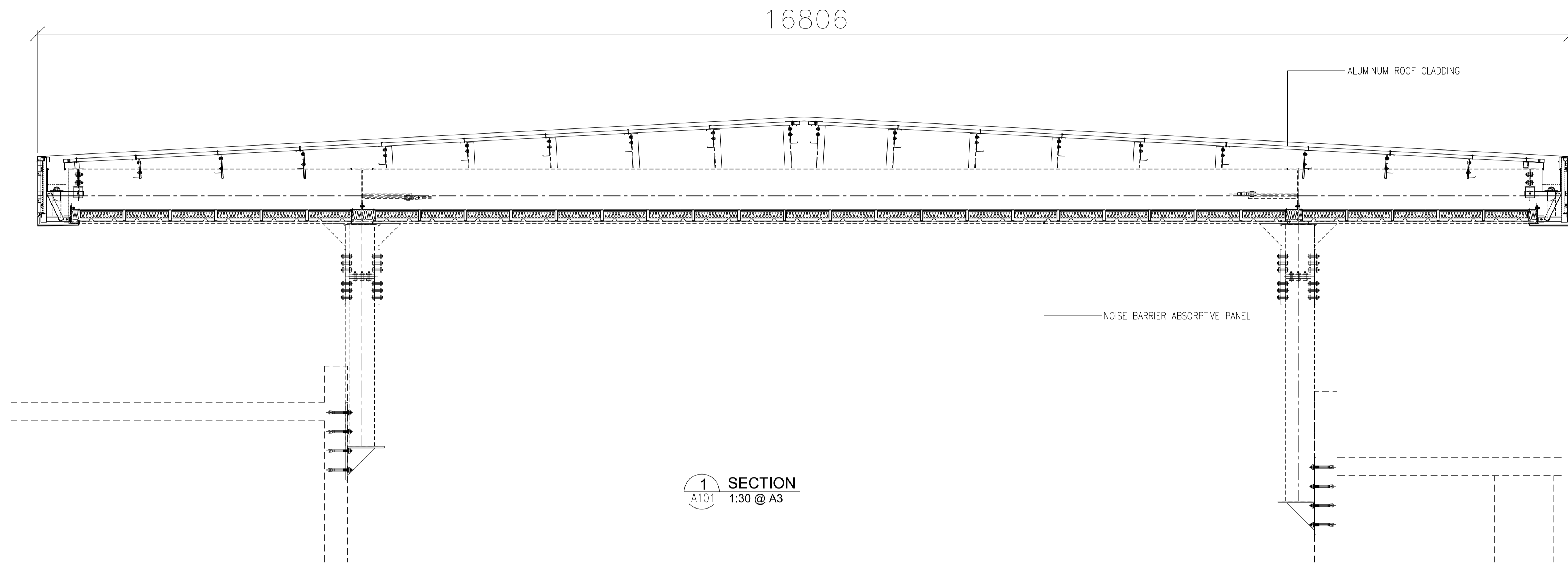
DRAWN	JY
DESIGNED	KL
CHECKED	KC
APPROVED	JS
DATE	04/Nov/2015

MTR
SHATIN TO CENTRAL LINK

ORIGINATOR: **SFK** Main Contractor: **SFK**
SUN FOOK KONG JOINT VENTURE

CADD REF: 1101_Z-TAW_SFJ_C23_A101B.dgn

TITLE	CONTRACT 1101 TAI WAI MEI TIN ROAD NOISE COVER ROOF PLAN		
SCALE	A3	DRAWING NO.	1101/Z/TAW/SFJ/C23/A101
SCALE	1:40	REV.	B



1 SECTION
A101 1:30 @ A3

PLOT DRW: \$
 MODEL: \$
 FILENAME: \$
 PRINTED BY: \$
 \$DATE\$
 \$TIME\$

MTR
APPROVED AS-BUILT DRAWING

REV	DESCRIPTION	BY	DATE	APPROVED
B	REVISION PER MTR COMMENTS ON 27 NOV 2015	SW	30/11/15	IW
A	AS BUILT SUBMISSION TO EPD	SW	4/11/15	SW

DRAWN	JY
DESIGNED	KL
CHECKED	KC
APPROVED	JS
DATE	04/Nov/2015

MTR

SHATIN TO CENTRAL LINK

ORIGINATOR: **SFK** Main Contractor: **SFK**
SUN FOOK KONG JOINT VENTURE

CADD REF. 1101_Z_TAW_SFJ_C23_A102B.dgn

TITLE	CONTRACT 1101 TAI WAI MEI TIN ROAD NOISE COVER SECTION PLAN		
SCALE @ A3	DRAWING NO.	REV.	
1:30	1101/Z/TAW/SFJ/C23/A102	B	