

OSCAR Bioenergy Joint Venture

Contract No. EP/SP/61/10
Organic Waste Treatment Facilities
Phase 1:
*Seventh Quarterly EM&A Summary
Report*

1 December 2016 – 28 February 2017

Environmental Resources Management

16/F, Berkshire House,
25 Westlands Road,
Quarry Bay, Hong Kong
Telephone: (852) 2271 3000
Facsimile: (852) 2723 5660
E-mail: post.hk@erm.com
<http://www.erm.com>

Meinhardt Infrastructure and Environment Limited

**Organic Waste Treatment Facilities,
Phase I**

7th Quarterly EM&A Summary Report
(1 December 2016 – 28 February 2017)

(March 2017)

Verified by: Helen Cochrane

Handwritten signature of Helen Cochrane in black ink, written over the name on the line.

Position: Independent Environmental Checker

Date: 22 March 2017

OSCAR Bioenergy Joint Venture

Contract No. EP/SP/61/10
Organic Waste Treatment Facilities
Phase 1:
*Seventh Quarterly EM&A Summary
Report*

1 December 2016 - 28 February 2017

Reference 0279222

For and on behalf of ERM-Hong Kong, Limited	
Approved by:	Frank Wan
Signed:	
Position:	Partner
Certified by:	
	(Environmental Team Leader - Mandy To)
Certified by:	
	(Registered Landscape Architect No. R-150 - Albert Chung)
Date:	21 March 2017

CONTENTS

	<i>EXECUTIVE SUMMARY</i>	<i>I</i>
<i>1</i>	<i>INTRODUCTION</i>	<i>1</i>
<i>1.1</i>	<i>PURPOSE OF THE REPORT</i>	<i>1</i>
<i>1.2</i>	<i>STRUCTURE OF THE REPORT</i>	<i>1</i>
<i>2</i>	<i>PROJECT INFORMATION</i>	<i>3</i>
<i>2.1</i>	<i>BACKGROUND</i>	<i>3</i>
<i>2.2</i>	<i>GENERAL SITE DESCRIPTION</i>	<i>4</i>
<i>2.3</i>	<i>CONSTRUCTION ACTIVITIES</i>	<i>4</i>
<i>2.4</i>	<i>PROJECT ORGANISATION AND MANAGEMENT STRUCTURE</i>	<i>4</i>
<i>2.5</i>	<i>STATUS OF ENVIRONMENTAL APPROVAL DOCUMENTS</i>	<i>4</i>
<i>3</i>	<i>ENVIRONMENTAL MONITORING REQUIREMENT, ENVIRONMENTAL MITIGATION MEASURES</i>	<i>6</i>
<i>4</i>	<i>IMPLEMENTATION STATUS ON ENVIRONMENTAL PROTECTION REQUIREMENTS</i>	<i>7</i>
<i>5</i>	<i>WASTE MANAGEMENT</i>	<i>8</i>
<i>6</i>	<i>ENVIRONMENTAL INSPECTIONS</i>	<i>9</i>
<i>6.1</i>	<i>WEEKLY SITE AUDITS</i>	<i>9</i>
<i>6.2</i>	<i>LANDSCAPE AND VISUAL AUDIT</i>	<i>9</i>
<i>6.3</i>	<i>EFFECTIVENESS OF MITIGATION MEASURES AND MONITORING</i>	<i>10</i>
<i>7</i>	<i>ENVIRONMENTAL NON-CONFORMANCE</i>	<i>11</i>
<i>7.1</i>	<i>SUMMARY OF ENVIRONMENTAL NON-COMPLIANCE</i>	<i>11</i>
<i>7.2</i>	<i>SUMMARY OF ENVIRONMENTAL COMPLAINT</i>	<i>11</i>
<i>7.3</i>	<i>SUMMARY OF ENVIRONMENTAL SUMMON AND SUCCESSFUL PROSECUTION</i>	<i>11</i>
<i>8</i>	<i>CONCLUSIONS</i>	<i>12</i>

LIST OF TABLES

<i>TABLE 2.1</i>	<i>SUMMARY OF CONSTRUCTION ACTIVITIES UNDERTAKEN IN REPORTING PERIOD</i>
<i>TABLE 2.2</i>	<i>SUMMARY OF ENVIRONMENTAL LICENSING, NOTIFICATION AND PERMIT STATUS</i>

TABLE 5.1 QUANTITIES OF WASTE GENERATED FROM THE PROJECT

LIST OF ANNEXES

ANNEX A	LOCATION OF PROJECT
ANNEX B	WORKS LOCATION
ANNEX C	CONSTRUCTION PROGRAMME FOR THE PROJECT
ANNEX D	PROJECT ORGANIZATION CHART WITH CONTACT DETAIL
ANNEX E	IMPLEMENTATION SCHEDULE OF MITIGATION MEASURES
ANNEX F	WASTE FLOW TABLE
ANNEX G	ENVIRONMENTAL COMPLAINT, ENVIRONMENTAL SUMMONS AND PROSECUTION LOG
ANNEX H	INVESTIGATION REPORT OF ENVIRONMENTAL NON-COMPLIANCE

EXECUTIVE SUMMARY

The construction works of *No. EP/SP/61/10 Organic Waste Treatment Facilities Phase I (the Project)* commenced on 21 May 2015. This is the seventh quarterly Environmental Monitoring and Audit (EM&A) summary report presenting the EM&A works carried out during the period from 1 December 2016 to 28 February 2017 in accordance with the EM&A Manual.

Environmental Monitoring and Audit Progress

A summary of the monitoring activities undertaken in this reporting period is listed below:

- Joint Environmental Site Inspection 13 times
- Landscape & Visual Monitoring 7 times

Waste Management

Waste generated from this Project includes inert construction and demolition (C&D) materials (public fill) and non-inert C&D materials (construction wastes).

Environmental Exceedance/Non-conformance/Compliant/Summons and Prosecution

No exceedance was recorded during the reporting period.

No non-compliance event was recorded during the reporting period.

No environmental complaint and summon/prosecution was received in this reporting period.

1 INTRODUCTION

ERM-Hong Kong, Limited (ERM) was appointed by OSCAR Bioenergy Joint Venture (the Contractor) as the Environmental Team (ET) to undertake the Environmental Monitoring and Audit (EM&A) programme for the *Contract No. EP/SP/61/10 of Organic Waste Treatment Facilities Phase I (the Project)*.

1.1 PURPOSE OF THE REPORT

This is the seventh quarterly EM&A summary report, which summarizes the impact monitoring results and audit findings for the EM&A programme during the reporting period from **1 December 2016 to 28 February 2017**.

1.2 STRUCTURE OF THE REPORT

The structure of the report is as follows:

Section 1 : **Introduction**

It details the scope and structure of the report.

Section 2 : **Project Information**

It summarises background and scope of the Project, site description, project organization, construction programme, the construction works undertaken and the status of Environmental Permits (EP)/licences over the construction phase of the Project.

Section 3 : **Environmental Monitoring Requirements**

It summarises the environmental monitoring including monitoring parameters, monitoring programmes, monitoring frequency, monitoring locations, Action and Limit Levels, Event/ Action Plans, environmental mitigation measures as recommended in the approved EIA report, EP and relevant environmental requirements stated in the Contract Specification.

Section 4 : **Implementation Status on Environmental Mitigation Measures**

It summarises the implementation of environmental protection measures during the reporting period.

Section 5 : **Waste Management**

It summarises the quantity of public fill and construction waste generated in the reporting period

Section 6 : **Environmental Site Inspection**

It summarises the audit findings of the weekly site inspections undertaken within the reporting period.

Section 7 : **Environmental Non-conformance**

It summarises any exceedance of environmental performance standard, and environmental complaints and environmental summons received within the reporting period.

Section 8 : **Conclusions**

2.1**BACKGROUND**

The Organic Waste Treatment Facilities (OWTF) Phase I development (hereinafter referred to as “the Project”) is to design, construct and operate a biological treatment facility with a capacity of about 200 tonnes per day and convert source-separated organic waste from commercial and industrial sectors (mostly food waste) into compost and biogas through proven biological treatment technologies.

The environmental acceptability of the construction and operation of the Project had been confirmed by findings of the associated Environmental Impact Assessment (EIA) Study completed in 2009. The Director of Environmental Protection approved this EIA Report under the Environmental Impact Assessment Ordinance (EIAO) (Cap. 499) in February 2010 (Register No.: AEIAR-149/2010) (hereafter referred to as the approved EIA Report). Subsequent Report on Re-assessment on Environmental Implications and Report on Re-assessment on Hazard to Life Implications were completed in 2013, respectively.

An Environmental Permit (EP) (No. EP-395/2010) was issued by the Environmental Protection Department (EPD) to the EPD, the Permit Holder, on 21 June 2010 and varied on 18 March 2013 (No. EP-395/2010/A) and 21 May 2013 (No. EP-395/2010/B), respectively. The Design Build and Operate Contract for the OWTF (Contract No. EP/SP/61/10 Organic Waste Treatment Facilities Phase I (the Contract)) was awarded to SITA Waste Services Limited, ATAL Engineering Limited and Ros-Roca, Sociedad Anonima jointly trading as the OSCAR Bioenergy Joint Venture (OSCAR or the Contractor). A Further EP (No. FEP-01/395/2010/B) was issued by the EPD to the OSCAR on 16 February 2015. Variation to both EPs No. EP-395/2010/B and No. FEP-01/395/2010/B were made in December 2015. The latest EPs, No. EP-395/2010/C and No. FEP-01/395/2010/C, were issued by the EPD on 21 December 2015.

Under the requirements of Condition 5 of the EP (No. FEP-01/395/2010/C), an Environmental Monitoring and Audit (EM&A) programme as set out in the Agreement No. CE7/2008 (EP) EM&A Manual (hereinafter referred to as EM&A Manual) is required to be implemented. ERM-Hong Kong, Ltd (ERM) has been appointed by OSCAR as the Environmental Team (ET) to undertake the EM&A programme for the Contract.

The construction works commenced on 21 May 2015 and are scheduled for completion by September 2017.

2.2 GENERAL SITE DESCRIPTION

The Project Site is located at Siu Ho Wan in North Lantau with an area of about 2 hectares. The layout of the upgrading works is illustrated in *Annex A*.

2.3 CONSTRUCTION ACTIVITIES

A summary of the major construction activities undertaken in the reporting period is shown *Table 2.1*. The locations of the construction activities are shown in *Annex B*. The construction programme of the Project is presented in *Annex C*.

Table 2.1 *Summary of Construction Activities Undertaken in the Reporting Period*

Construction Activities Undertaken
<ul style="list-style-type: none">• Building 1 - ABWF and finishing works, E&M installation.• Building 2 - ABWF and finishing work, steel roof and covered walkway cladding, installation of GRP ductwork at roof, E&M installation.• Building 3 - ABWF, Electrical and BS installation inside rooms at G/F & LR/F.• Weighbridge and control room structure.• Collection chamber 1 excavation and construction.• Link bridge Bondex steel deck.• NTH mitigation works on slope.• Boundary fence wall construction.• AD Tank -Cladding to SBT. Water drain from AD1 & 2. ABWF and pump installation to pump rooms. Pipe rack construction.• Pipe rack and cable rack installation.• Ammonia Stripping Plant -structural steel and mechanical erection work.• Mechanical installation (pre-treatment equipment, CAPCS - scrubber) at Building 1.• Mechanical installation (composting equipment) inside pipe gallery at Building 2.• Electrical installation (cable trays installation, B2 MCC panels installation,, B3 HV and LV installation)• Sitewide - Underground drainage and drawpit work.• Portion 2 - temp. traffic arrangement, pavement and roadworks.• Portion 4 - Material handling and storage, steel bending & cutting.

2.4 PROJECT ORGANISATION AND MANAGEMENT STRUCTURE

The project organisation chart and contact details are shown in *Annex D*.

2.5 STATUS OF ENVIRONMENTAL APPROVAL DOCUMENTS

A summary of the valid permits, licences, and/or notifications on environmental protection for this Project is presented in *Table 2.2*.

Table 2.2 *Summary of Environmental Licensing, Notification and Permit Status*

Permit/ Licenses/ Notification	Reference	Validity Period	Remarks
Environmental Permit	FEP-01/395/2010/C	Throughout the Contract	Permit granted on 21 December 2015
Notification of Construction Works under the Air Pollution Control (Construction Dust) Regulation	Ref No. 386715	Throughout the Contract	-
Effluent Discharge License	WT00021482-2015	21 May 2015 – 31 May 2020	Approved on 21 May 2015
Construction Noise Permit-P1&P2	GW-RW0483-16	12 September 2016 – 11 December 2016	Approved on 22 August 2016
Construction Noise Permit-P1&P2	GW-RW0678-16	12 December 2016-11 June 2017	Approved on 2 December 2016
Construction Noise Permit – P3	GW-RW0628-16	1 December 2016 – 31May 2017?	Approved on 8 November 2016
Chemical Waste Producer Registration	WPN 5213-961-O2231-01	Throughout the Contract	Approved on 29 April 2015
Waste Disposal Billing Account	Account number: 702310	Throughout the Contract	-

ENVIRONMENTAL MONITORING REQUIREMENT, ENVIRONMENTAL MITIGATION MEASURES

All the relevant environmental mitigation measures listed in the EIA Report and EM&A Manual are summarised in *Annex E*.

According to the EM&A Manual and EP requirement, no air quality, noise and water quality monitoring is required.

Bi-weekly landscape and visual audit is required to ensure that the design, implementation and maintenance of landscape and visual mitigation measures recommended in the EIA Report are fully achieved.

IMPLEMENTATION STATUS ON ENVIRONMENTAL PROTECTION REQUIREMENTS

The Contractor has implemented environmental mitigation measures and requirements as stated in the approved EIA Report and EM&A Manual. The implementation status of the measures during the reporting period is summarised in *Annex E*.

Wastes generated from this Project include inert construction and demolition (C&D) materials (public fill) and non-inert C&D materials (construction waste). Construction waste comprises general refuse, metals and paper/cardboard packaging materials. Metals generated from the Project are also grouped into construction waste as the materials were not disposed of with others at public fill. Reference has been made to the Monthly Summary Waste Flow Table prepared by the Contractor (see *Annex F*). With reference to the relevant handling records and trip tickets of this Project, the quantities of different types of waste generated in the reporting month are summarised in *Table 5.1*.

Table 5.1 *Quantities of Waste Generated from the Project*

Month / Year	Quantity			
	Total Inert C&D Materials Generated ^(a)	Non-inert C&D Materials ^(b)		
		C&D Materials Recycled ^(c)	C&D Waste Disposed of at Landfill ^(d)	Chemical Waste
December 2016	2,477.95 tonnes	3,053.00 kg	136.80 tonnes	0.00 L
January 2017	2,150.92 tonnes	55,921.00 kg	127.43 tonnes	0.00 L
February 2017	553.80 tonnes	36,640.00 kg	83.46 tonnes	460 L

Notes:

- (a) Inert C&D materials (public fill) include bricks, concrete, building debris, rubble and excavated spoil. In total, 5,182.67 tonnes of inert C&D material were generated from the Project, of which 1,432.60 tonnes were reused in this Contract and the remaining 3,750.07 tonnes were disposed as public fill to Fill Banks at Tuen Mun Area 38. The detailed waste flow is presented in *Annex F*.
- (b) Non-inert C&D materials (construction wastes) include metals, paper / cardboard packaging waste, plastics and other wastes such as general refuse. Metals generated from the Project were grouped into construction wastes as the materials were not disposed of with others at the public fill.
- (c) 49,140.00 kg of metals, 39,964.00 kg of papers/ cardboard packing and 6,510.00 kg of plastics were sent to recyclers for recycling during the reporting period.
- (d) Construction wastes other than metals, paper/cardboard packaging, plastics and chemicals were disposed of at NENT Landfill by subcontractors.

6.1 WEEKLY SITE AUDITS

Thirteen site inspections were conducted during the reporting period. There was no non-compliance recorded during the site inspections. Follow-up actions were undertaken as reported by the Contractor and observed in the subsequent weekly site inspections conducted in the reporting period.

December 2016

Joint site inspections were conducted by the representatives of the Contractor, SOR and the ET on 5, 12, 21 and 28 December 2016. The IEC was also present at the joint inspection on 21 December 2016.

January 2017

Joint site inspections were conducted by the representatives of the Contractor, SOR and the ET on 4, 9, 18 and 23 January 2017. The IEC was also present at the joint inspection on 18 January 2017.

February 2017

Joint site inspections were conducted by the representatives of the Contractor, SOR and the ET on 1, 6, 15, 20 and 27 February 2017. The IEC was also present at the joint inspection on 15 February 2017.

6.2 LANDSCAPE AND VISUAL AUDIT

Seven landscape and visual monitoring site inspections were conducted during the reporting period. Follow-up actions needed to be implemented were recommended to the Contractor and the status of the follow-up actions was reviewed during the subsequent weekly site inspections. It was confirmed that most of the necessary landscape and visual mitigation measures as summarised in *Annex E* were implemented by the Contractor.

In accordance with the EM&A Manual, bi-weekly landscape and visual inspection is required to ensure that the design, implementation and maintenance of landscape and visual mitigation measures recommended in the EIA Report are fully achieved. The onsite inspection of the landscape and visual mitigation measures has commenced since June 2015 during weekly site inspections.

December 2016

Bi-weekly site inspections were conducted on 5 and 19 December 2016.

January 2017

Bi-weekly site inspections were conducted on 3, 17 and 26 January 2017.

February 2017

Bi-weekly site inspections were conducted on 6 and 20 February 2017.

Key landscape and visual mitigation measures implemented in the reporting period included:

- Provide insect prevention measures to the exposed root of retained tree to prevent potential damage due to the exposure.
- Provide the non-moisture holding material around the trees to prevent potential damage.
- Avoid placing machine near the tree protection zone.

6.3

EFFECTIVENESS OF MITIGATION MEASURES AND MONITORING

The mitigation measures recommended in the EIA report and required by the EP are considered effective in minimizing environmental impacts.

The EM&A for the Project was conducted as scheduled during the reporting period. No non-compliance events were observed during site inspections and no exceedances were recorded during this reporting period. The EM&A programme is considered effective.

7 ENVIRONMENTAL NON-CONFORMANCE

7.1 SUMMARY OF ENVIRONMENTAL NON-COMPLIANCE

No non-compliance event was recorded during the reporting period.

One non-compliance event was recorded during the last reporting period, which was on 25 August 2016 9:45 in the morning. During cleaning of the waste water treatment tanks, a worker inadvertently allowed the cleaning water to flow out to the DSD Nullah without passing through the waste water treatment facilities. The remedial works and follow-up actions had been completed during this reporting period by the contractor.

7.2 SUMMARY OF ENVIRONMENTAL COMPLAINT

No complaint was received during the reporting period. The cumulative environmental complaint log is shown in *Annex G*.

7.3 SUMMARY OF ENVIRONMENTAL SUMMON AND SUCCESSFUL PROSECUTION

No summon/prosecution was received during the reporting period. The cumulative summons/prosecution log is shown in *Annex G*.

This EM&A Report presents the EM&A works undertaken during the reporting period from 1 December 2016 to 28 February 2017 in accordance with EM&A Manual and requirements of EP (FEP-01/395/2010/C).

No air quality, noise and water quality monitoring is required.

Bi-weekly landscape and visual monitoring was conducted in this quarterly period. Most of the necessary landscape and visual mitigation measures recommended in the EIA Report were implemented by the Contractor. Follow-up actions would be implemented by the Contractor to improve protection measures on the retained or to-be transplanted trees.

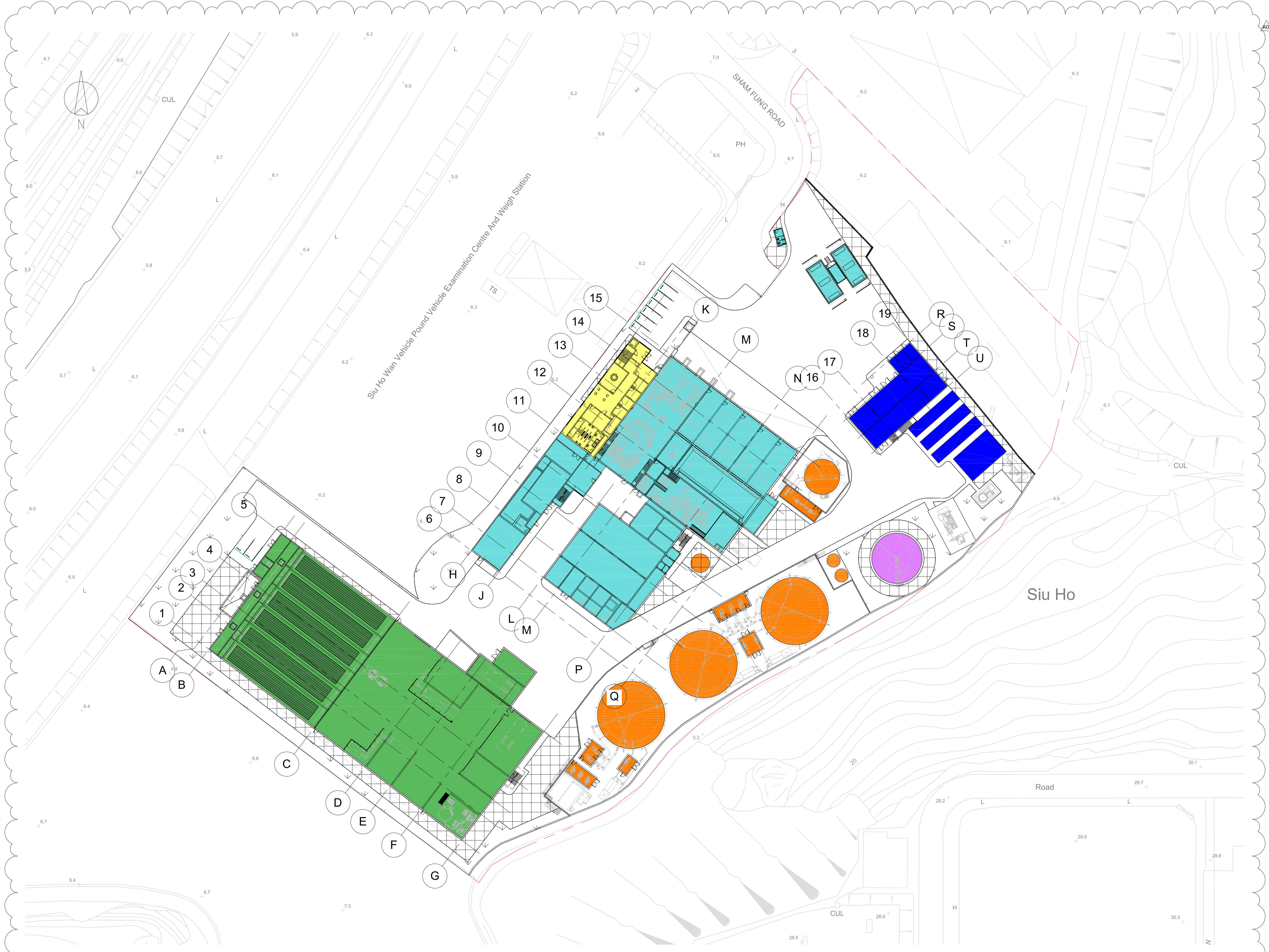
No non-compliance event was recorded during the reporting period.

No complaint and summons/prosecution was received during the reporting period.

The ET will keep track on the EM&A programme to ensure compliance of environmental requirements and the proper implementation of all necessary mitigation measures in the coming periods.

Annex A




Project Layout



A01	05/03/15	CW	MB	IMTECH BACKGROUNDS UPDATED
A00	18/02/15	CW	MB	DRAFT ISSUE
REV	DATE	BY	APP	DESCRIPTION

CLIENT
 ENVIRONMENTAL PROTECTION DEPARTMENT
 GOVERNMENT OF THE HKSAR

CLIENT'S CONSULTANT
 **AECOM**
 AECOM ASIA CO. LTD.

CONTRACTOR
   
 OSCAR BIOENERGY JV

LEAD DESIGNER
 **ARUP**
 Ove Arup & Partners Hong Kong Limited

ENVIRONMENTAL TEAM
 **ERM**
 ERM HONG KONG LIMITED

INDEPENDENT CONSULTANTS
 **MEINHARDT**
 Meinhardt Infrastructure and Environment Limited
 邁達基建築環保工程顧問有限公司

PROJECT
 ORGANIC WASTE TREATMENT FACILITIES
 PHASE 1
 EP/SP/61/10

STATUS
 DRAFT ISSUE

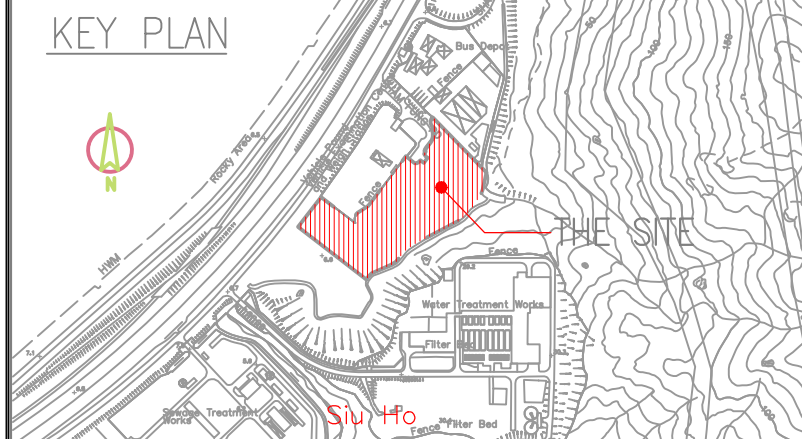
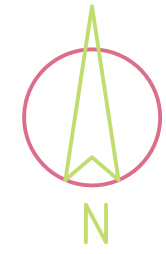
DRAWING TITLE
 SITE LAYOUT

DRAWN	CW	CHECKED	RS	APPROVED	DP
SCALE	1:500@A1 / 1:1000@A3		DATE	12/02/15	
JOB NO.	239956	DRAWING NO.	DR-OAP-20-0-CA-1001	REV.	A01

Plot Time: 05/03/15 21:20:07
 Plot Location: C:\Users\mathew.brown\Documents\DWG\Architectural Working Model (Combined) - CEH_mathew.brown.rvt

Annex B


Works Location



LEGEND

- SITE BOUNDARY
- T T T T T PROPOSED HOARDING TYPE 1
- +++++ EXISTING CHAIN-LINK FENCE
- ~~~~~ PROPOSED 6 m TYPE II SHEET PILE PLANKING WALL WITH 3 m EXTRUDED ABOVE GROUND
- XXXXX EXISTING FENCE WALL
- - - - DISCHARGE DRAINAGE
- 300mm(W) PROPOSED TEMP. CHANNEL
- 300mm(W) EXISTING U-CHANNEL
- 50/75mm FLEXIBLE DRAIN
- PROPOSED TEMP. CATCH PIT
- PORTABLE WATER PIPE
- TRAFFIC DIRECTION
- REBAR STORAGE AREA AND BENDING YARD
- GENERAL MATERIAL STORAGE AREA
- C & D MATERIAL STORAGE AREA
- VEHICLE WHEEL WASH
- WATER TREATMENT PLANT

REV	DATE	BY	APP	DESCRIPTION
J	01 SEP 2016	LL	JC	REVISED LAYOUT
I	27 APR 2016	LL	JC	REVISED LAYOUT
H	30 DEC 2015	LL	JC	REVISED LAYOUT
G	30 MAY 2015	LL	CL	REVISED LAYOUT


CLIENT
 ENVIRONMENTAL PROTECTION DEPARTMENT
 GOVERNMENT OF THE HKSAR

CLIENT'S CONSULTANT
 **AECOM**
 AECOM ASIA CO. LTD.

CONTRACTOR

OSCAR Bioenergy Joint Venture

LEAD DESIGNER
 **ARUP**
 Ove Arup & Partners Hong Kong Limited

ENVIRONMENTAL TEAM
 **ERM HONG KONG LIMITED**

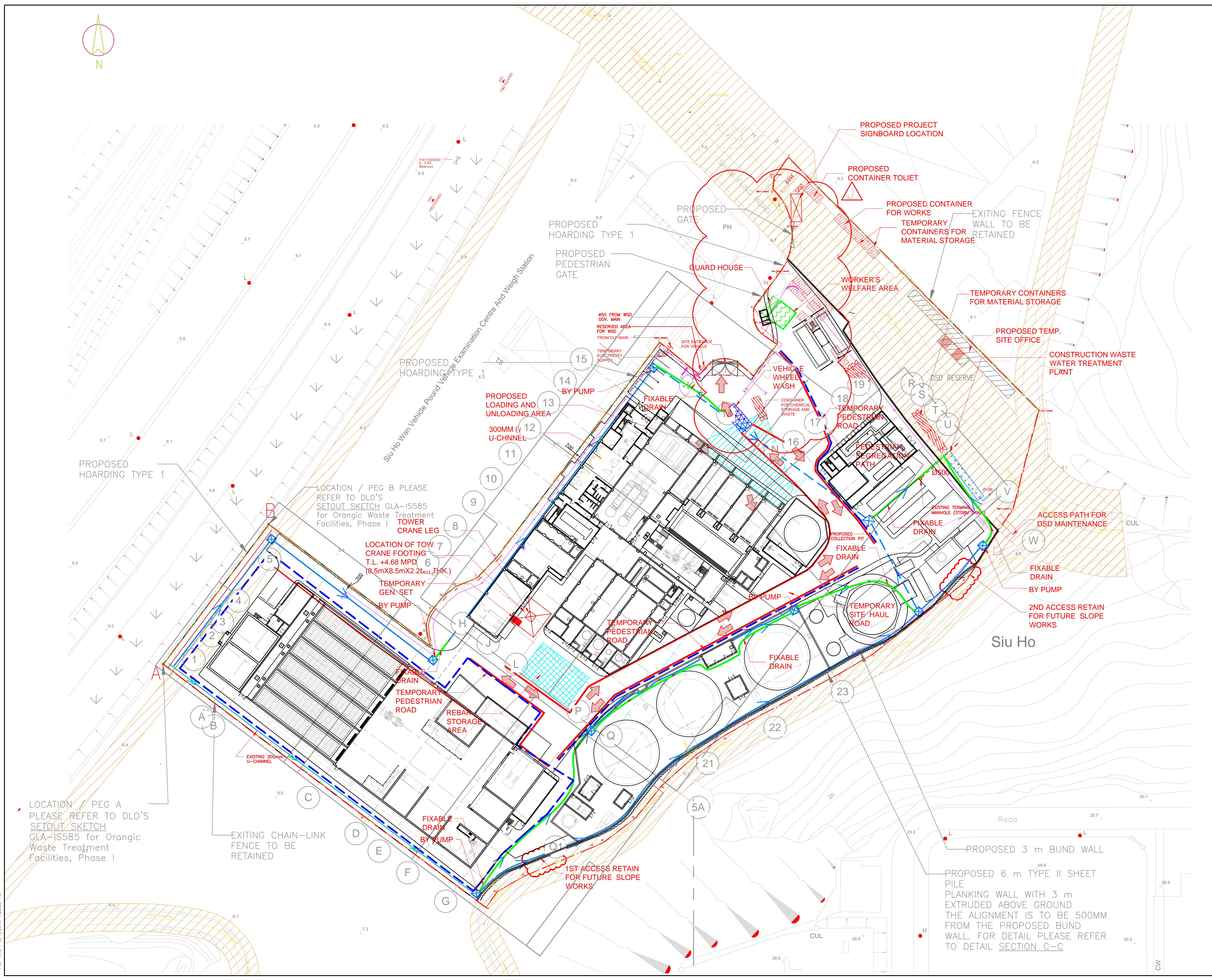
INDEPENDENT CONSULTANTS
 **MEINHARDT**
 Meinhardt Infrastructure and Environment Limited
 邁進基達環境工程顧問有限公司

PROJECT
 ORGANIC WASTE TREATMENT FACILITIES
 PHASE I
 EP/SP/61/10

STATUS
 ISSUED FOR COMMENT

DRAWING TITLE
**GENERAL SITE LAYOUT PLAN
 AT PORTION 1**

DRAWN LL	CHECKED JC	APPROVED JC
SCALE 1:500@A1; 1:1000@A3	DATE 01 SEP 2016	REV. J
JOB NO. P00424	DRAWING NO. DR-PSC-00-0-CN-1002	REV. J



Plot By: LeoAM
 Plot Time: 9/7/2016 7:26:29 PM

DR-PSC-00-0-CN-1002

Annex C

Construction Programme of the Project

#	Activity ID	Activity Name	BL Project Duration	BL Project Start	BL Project Finish	Remaining Duration	Start	Finish	Activity % Complete	Total Float	Variance - BL Project	2017				
												Feb	Mar	Apr	May	
1	Contract No. EP/SP/61/10 - The Design & Construction															
2	MAJOR MILESTONES															
3	MC2 Milestones for Design of the Works															
4	MC2.1 The Employer's consent granted on Detailed Design Submission															
5																
6	MC210600	MC2.1.6 - Employer's consent granted in respect of Detail Design of control & instrumentation works	0d	20-Oct-15	20-Oct-15	0d	15-May-17	15-May-17	0%	-151d	-573d					
7	MC2.2 Completion of the Design of the Works															
8																
9	MC220100	MC2.2 - Completion of the Design of the Works	0d	23-Feb-16	23-Feb-16	0d	15-May-17	15-May-17	0%	-120d	-447d					
10	MC3 Milestones for Construction of the Works															
11	MC3.2 Delivery of Materials and Equipment to the Site															
12																
13	MC320100	MC3.2.1 - Completion of Delivery of Pre-treatment System	0d	26-Jan-16	26-Jan-16	0d	16-Feb-17 A	16-Feb-17 A	100%	-261d	-261d					
14	MC320500	MC3.2.5 - Completion of Delivery of Centralized Air Pollution Control System	0d	26-Jan-16	26-Jan-16	0d	16-Feb-17 A	16-Feb-17 A	100%	-261d	-261d					
15	PRELIMINARY AND GENERAL REQUIREMENT WORKS															
16	Training of Operation & Maintenance Staff															
17																
18																
19	TN100150	IC checks & certifies training syllabus & materials	14d	26-May-16	08-Jun-16	0d	28-Sep-16 A	26-Jan-17 A	100%	-232d	-232d					
20	TN100200	Employer agrees to training syllabus and materials	0d		22-Jun-16	0d		21-Feb-17	0%	-44d	-244d					
21	TN100250	O&M Training of Contractor's Operation staff	60d	29-Jul-16	24-Oct-16	60d	12-May-17	04-Aug-17	0%	101d	-193d					
22	TN100300	O&M Training of Employer's staff	64d	26-Aug-16	25-Nov-16	64d	22-Mar-17	27-Jun-17	0%	-42d	-141d					
23	Preparation of Testing / Operation Plan															
24	Factory Acceptance Test Plan															
25																
26	TP100110	IC checks & comments on Factory Acceptance Test Plan	14d	09-Oct-15	22-Oct-15	0d	17-Dec-15 A	24-Jan-17 A	100%	-460d	-460d					
27	TP100120	Revise & resubmit Factory Acceptance Test Plan	7d	23-Oct-15	29-Oct-15	0d	14-Jan-16 A	01-Feb-17 A	100%	-461d	-461d					
28	TP100130	IC checks & certifies Factory Acceptance Test Plan	7d	30-Oct-15	05-Nov-15	0d	15-Jan-16 A	13-Feb-17 A	100%	-466d	-466d					
29	TP100140	Employer Consents to Factory Acceptance Test Plan	0d		19-Nov-15	0d		27-Feb-17	0%	-94d	-466d					
30	Site Acceptance Test Plan															
31																
32	TP100200	Submission of Site Acceptance Test Plan	20d	31-Dec-15	28-Jan-16	0d	05-Dec-16 A	27-Jan-17 A	100%	-247d	-247d					
33	TP100210	IC checks & comments on Site Acceptance Test Plan	14d	29-Jan-16	11-Feb-16	12d	01-Feb-17 A	01-Mar-17	14.29%	-149d	-384d					
34	TP100220	Revise & resubmit Site Acceptance Test Plan	7d	12-Feb-16	18-Feb-16	7d	02-Mar-17	08-Mar-17	0%	-149d	-384d					
35	TP100230	IC checks & certifies Site Acceptance Test Plan	7d	19-Feb-16	25-Feb-16	7d	09-Mar-17	15-Mar-17	0%	-149d	-384d					
36	TP100240	Employer Consents to Site Acceptance Test Plan	0d		10-Mar-16	0d		29-Mar-17	0%	-149d	-384d					
37	All System Commissioning Plan															
38																
39	OP100150	Submission of All System Commissioning Plan	5d	14-Jun-16	20-Jun-16	0d	12-Dec-16 A	10-Feb-17 A	100%	-161d	-161d					
40	OP100160	IC checks & comments on All System Commissioning Plan	14d	21-Jun-16	04-Jul-16	19d	11-Feb-17 A	08-Mar-17	15%	-147d	-247d					
41	OP100170	Revise & resubmit All System Commissioning Plan	7d	05-Jul-16	11-Jul-16	7d	09-Mar-17	15-Mar-17	0%	-147d	-247d					
42	OP100180	IC checks & certifies All System Commissioning Plan	7d	12-Jul-16	18-Jul-16	7d	16-Mar-17	22-Mar-17	0%	-147d	-247d					
43	OP100190	Employer Consents to All System Commissioning Plan	0d		01-Aug-16	0d		05-Apr-17	0%	-147d	-247d					
44	Process Start Up & Commissioning Plan															
45																
46	OP100200	Submission of Process Start up & Commissioning Plan	5d	01-Aug-16	05-Aug-16	30d	28-Dec-16 A	31-Mar-17	55%	-65d	-163d					
47	OP100210	IC checks & comments on Process Start up & Commissioning Plan	14d	06-Aug-16	19-Aug-16	14d	01-Apr-17	14-Apr-17	0%	-98d	-238d					
48	OP100220	Revise & resubmit Process Start up & Commissioning Plan	7d	20-Aug-16	26-Aug-16	7d	15-Apr-17	21-Apr-17	0%	-98d	-238d					
49	OP100230	IC checks & certifies Process Start up & Commissioning Plan	7d	27-Aug-16	02-Sep-16	7d	22-Apr-17	28-Apr-17	0%	-98d	-238d					
50	OP100240	Employer Consents to Process Start up & Commissioning Plan	0d		16-Sep-16	0d		12-May-17	0%	-98d	-238d					
51	Plant Commissioning Plan															
52																
53	OP100350	Submission of Plant Commissioning Plan	5d	07-Nov-16	11-Nov-16	47d	16-Jan-17 A	28-Apr-17	18%	-82d	-112d					
54	OP100360	IC checks & comments on Plant Commissioning Plan	14d	12-Nov-16	25-Nov-16	14d	29-Apr-17	12-May-17	0%	-126d	-168d					
55	OP100370	Revise & resubmit Plant Commissioning Plan	7d	26-Nov-16	02-Dec-16	7d	13-May-17	19-May-17	0%	-126d	-168d					
56	COMMENCEMENT, SITE POSSESSION AND ACCESS															
57																
58																
59																

#	Activity ID	Activity Name	BL Project Duration	BL Project Start	BL Project Finish	Remaining Duration	Start	Finish	Activity % Complete	Total Float	Variance - BL Project	2017					
												Feb	Mar	Apr	May		
60	KD100330	End Date of Access to Portion 2	0d		07-Oct-16	0d		26-Jan-17 A	100%		-91d						
61	KD100370	Possession of Portion 4 - Ex-Ka Wah Batching Plant Area)	0d			92d	21-Mar-16 A	20-May-17	74.79%	225d							
62	DETAILED DESIGN SUBMISSION (DDS) - GENERAL, CIVIL, ABWF AND LAND!																
63	Overall Design																
64	General Building Plans Design																
65			44d	18-Jun-15	11-Aug-15	56d	28-Mar-15 A	28-Apr-17			-41d	-507d					
66			34d	18-Jun-15	30-Jul-15	32d	17-Mar-17	28-Apr-17			-41d	-517d					
67	DD101040	Submit General Building Plans to IC, ER & Employer	0d		18-Jun-15	0d		17-Mar-17*	0%		-90d	-434d					
68	DD101060	IC checks & comments on General Building Plans	14d	19-Jun-15	02-Jul-15	14d	18-Mar-17	31-Mar-17	0%		-133d	-638d					
69	DD101080	Revise & resubmit General Building Plans to IC, ER & Employer	7d	03-Jul-15	09-Jul-15	7d	01-Apr-17	07-Apr-17	0%		-133d	-638d					
70	DD101100	IC checks & certifies General Building Plans	7d	10-Jul-15	16-Jul-15	7d	08-Apr-17	14-Apr-17	0%		-133d	-638d					
71	DD101120	Employer consents to General Building Plans	0d		30-Jul-15	0d		28-Apr-17	0%		-52d	-638d					
72	Fire Safety Strategy Report																
73	DD102220	Revise & resubmit Detailed Design of Fire Safety Strategy Report to IC, ER & Employer	7d	15-Jul-15	21-Jul-15	35d	28-Mar-15 A	24-Mar-17	95%	-109d	-612d						
74	DD102240	IC checks & certifies Detailed Design of Fire Safety Strategy Report	7d	22-Jul-15	28-Jul-15	7d	25-Mar-17	31-Mar-17	0%		-109d	-612d					
75	DD102260	Employer consents to Detailed Design of Fire Safety Strategy Report	0d		11-Aug-15	0d		28-Apr-17	0%		-52d	-626d					
76	Waste Receiving, Pre-treatment & Administration Building #1																
77	Steelwork Design																
78	Building #1 Roof Steel Structure																
79	DD111210	Prepare & submit Method of Construction for Bldg #1 Roof - Structural Steelwork	25d	10-Aug-15	11-Sep-15	0d	03-Jan-17 A	08-Feb-17 A	100%		-347d						
80	DD111215	IC checks & certifies Method of Construction of Bldg #1 Roof - Structural Steelwork	14d	12-Sep-15	25-Sep-15	14d	09-Feb-17 A	03-Mar-17	35%	-138d	-525d						
81	CAPC Stack																
82	DD311310	Prepare & submit Method of Construction for CAPC Stack - Steel Support	21d	14-Sep-15	14-Oct-15	0d	03-Jan-17 A	08-Feb-17 A	100%		-326d						
83	DD311315	IC checks & certifies Method of Construction of CAPC Stack - Steel Support	14d	15-Oct-15	28-Oct-15	14d	09-Feb-17 A	03-Mar-17	35%	-122d	-492d						
84	Auxiliary Buildings & Facilities #3																
85	Substructure Design																
86	Weighbridge																
87	DD311402	IC checks & certifies Method of Construction for Substructure of Weighbridge	0d			25d	14-Dec-16 A	14-Mar-17	78%		-135d						
88	Superstructure Design																
89	Weighbridge																
90	DD311710	IC checks & certifies Method of Construction of Superstructure Design of Weighbridge	0d			25d	14-Dec-16 A	14-Mar-17	72%		292d						
91	Gate House																
92	DD311910	IC checks & certifies Method of Construction of Superstructure Design of Gate House	0d			25d	14-Dec-16 A	14-Mar-17	72%		-159d						
93	External Civil Engineering Works																
94	Section 3- Street Fire Hydrant and Section 4- Water Supply																
95			35d	28-May-15	09-Jul-15	36d	01-Mar-17	12-Apr-17			-129d	-524d					
96	DD411130	Prepare & submit Method of Construction for External Works (Section 3 & 4)	21d	28-May-15	25-Jun-15	21d	01-Mar-17*	29-Mar-17	0%		-108d	-437d					
97	DD411135	IC checks & certifies Method of Construction of External Works (Section 3 & 4)	14d	26-Jun-15	09-Jul-15	14d	30-Mar-17	12-Apr-17	0%		-159d	-643d					
98	Section 5- Road, Paving, Road Marking																
99			0d			41d	27-Mar-17	19-May-17			-105d						
100	DD411480	Prepare & submit Method of Construction for External Works (Section 5)	0d			25d	27-Mar-17*	05-May-17	0%		-85d						
101	DD411500	IC checks & certifies Method of Construction of External Works (Section 5)	0d			14d	06-May-17	19-May-17	0%		-133d						
102	Section 6- Ext. Lighting (Area 3 - Electrical)																
103			66d	16-Sep-15	04-Dec-15	64d	07-Jan-17 A	10-May-17			-123d	-419d					
104	DD411250	Prepare & submit Method of Construction for External Works (Section 6)	25d	16-Sep-15	23-Oct-15	25d	20-Mar-17*	26-Apr-17	0%		-105d	-372d					
105	DD411255	IC checks & certifies Method of Construction of External Works (Section 6)	14d	24-Oct-15	06-Nov-15	14d	27-Apr-17	10-May-17	0%		-157d	-551d					
106	DD411300	Revise & resubmit Detailed Design of External Works (Section 6) to IC, Employer & ER	7d	07-Nov-15	13-Nov-15	24d	07-Jan-17 A	13-Mar-17	55%		-172d	-486d					
107	DD411320	IC checks & certifies Detailed Civil Design of External Works (Section 6)	7d	14-Nov-15	20-Nov-15	7d	14-Mar-17	20-Mar-17	0%		-172d	-486d					
108	DD411340	Employer consents to Detailed Civil Design of External Works (Section 6)	0d		04-Dec-15	0d		03-Apr-17	0%		-172d	-486d					
109	Architectural, Building Works & Finishes (ABWF)																
110	Building #1 (Waste Receiving, Pre-treatment & Admin. Building)																
111			14d	01-Sep-15	14-Sep-15	0d	14-Dec-16 A	18-Jan-17 A			-492d						
112	DD120115	IC checks & certifies Method of Construction of Bldg.#1 ABWF	14d	01-Sep-15	14-Sep-15	0d	14-Dec-16 A	18-Jan-17 A	100%		-492d						
113	Interior Fitting-out Works																
114			42d	15-Sep-15	05-Nov-15	41d	27-Mar-17	19-May-17			-93d	-452d					
115			42d	15-Sep-15	05-Nov-15	41d	27-Mar-17	19-May-17			-93d	-452d					
116	DD120210	Prepare & submit Method of Construction for Interior Fitting-out	25d	15-Sep-15	22-Oct-15	25d	27-Mar-17*	05-May-17	0%		-78d	-378d					
117	DD120215	IC checks & certifies Method of Construction of Interior Fitting-out	14d	23-Oct-15	05-Nov-15	14d	06-May-17	19-May-17	0%		-119d	-561d					
118	External Landscape Works and Building #2 Green Roof																
119			50d	06-Aug-15	16-Oct-15	30d	20-Apr-17	05-Jun-17			-81d	-401d					
120			50d	06-Aug-15	16-Oct-15	30d	20-Apr-17	05-Jun-17			-81d	-401d					

#	Activity ID	Activity Name	BL Project Duration	BL Project Start	BL Project Finish	Remaining Duration	Start	Finish	Activity % Complete	Total Float	Variance - BL Project	2017				
												Feb	Mar	Apr	May	
121	DD410210	Prepare & submit Method of Construction for Landscape and Building #1 & #2 Green Roof	50d	06-Aug-15	16-Oct-15	30d	20-Apr-17*	05-Jun-17	0%	-81d	-401d					
122	DETAILED DESIGN SUBMISSION (DDS) - ELECTRICAL AND MECHANICAL		46d	22-Aug-15	16-Oct-15	68d	13-May-15 A	15-May-17	190d	-464d						
123	Electrical System and Accessories - Switchgear, LCP, Cable, Earthing, etc.		56d	22-Aug-15	16-Oct-15	38d	13-May-15 A	27-Mar-17	279d	-528d						
124	High Voltage (HV)		0d			0d	12-Oct-16 A	01-Mar-17		-106d						
125			0d			0d	12-Oct-16 A	01-Mar-17		-106d						
126	DE201200	IC checks & certifies HV Electrical System	0d			0d	12-Oct-16 A	15-Feb-17 A	100%							
127	DE201250	Employer consents to HV Electrical System	0d			0d		01-Mar-17	0%	-106d						
128	Low Voltage (LV) and Emergency Generator		56d	22-Aug-15	16-Oct-15	38d	13-May-15 A	27-Mar-17	-107d	-528d						
129			56d	22-Aug-15	16-Oct-15	38d	13-May-15 A	27-Mar-17	-107d	-528d						
130	DE200500	IC checks & comments on Detailed Design of Electrical System	14d	22-Aug-15	04-Sep-15	10d	13-May-15 A	27-Feb-17	95%	-107d	-542d					
131	DE200550	Revise & resubmit Detailed Design of Electrical System to IC, Employer & ER	7d	05-Sep-15	11-Sep-15	17d	10-Jul-15 A	06-Mar-17	92%	-107d	-542d					
132	DE200600	IC checks & certifies Electrical System	7d	12-Sep-15	18-Sep-15	24d	15-Jul-15 A	13-Mar-17	88%	-107d	-542d					
133	DE200650	Employer consents to Electrical System	0d		16-Oct-15	0d		27-Mar-17	0%	-107d	-528d					
134	Extra Low Voltage (ELV)		0d			38d	18-Nov-16 A	27-Mar-17		279d						
135			0d			38d	18-Nov-16 A	27-Mar-17		279d						
136	DS140550	IC checks & certifies ELV System	0d			24d	18-Nov-16 A	13-Mar-17	72%	279d						
137	DS140600	Employer consents to ELV System	0d			0d		27-Mar-17	0%	279d						
138	Instrumentation, Control and Monitoring System (SCADA/PLC)		0d			68d	01-Dec-15 A	15-May-17		-117d						
139			0d			68d	01-Dec-15 A	15-May-17		-117d						
140			0d			68d	01-Dec-15 A	15-May-17		-117d						
141	DE210690	IC checks & comments on Detailed Design of SCADA/PLC System (Batch 2) (2nd)	0d			17d	15-Nov-16 A	06-Mar-17	88%	-131d						
142	DE210700	Revise & resubmit Detailed Design of SCADA/PLC System to IC, Employer & ER (Batch 2) (3rd)	0d			29d	07-Mar-17	04-Apr-17	0%	-131d						
143	DE210710	IC checks & certifies SCADA/PLC System (Batch 2) (3rd)	0d			7d	05-Apr-17	11-Apr-17	0%	-131d						
144	DE210720	Employer consents to SCADA/PLC System (Batch 2)	0d			0d		25-Apr-17	0%	-131d						
145	DE210730	Prepare & submit Detailed Design of SCADA/PLC to IC, ER & Employer (Batch 3) (1st)	0d			16d	01-Dec-15 A	13-Mar-17	96%	-102d						
146	DE210740	IC checks & comments on Detailed Design of SCADA/PLC System (Batch 3) (1st)	0d			14d	14-Mar-17	27-Mar-17	0%	-151d						
147	DE210750	Revise & resubmit Detailed Design of SCADA/PLC System to IC, Employer & ER (Batch 3) (2nd)	0d			7d	28-Mar-17	03-Apr-17	0%	-151d						
148	DE210760	IC checks & comments on Detailed Design of SCADA/PLC System (Batch 3) (2nd)	0d			14d	04-Apr-17	17-Apr-17	0%	-151d						
149	DE210770	Revise & resubmit Detailed Design of SCADA/PLC System to IC, Employer & ER (Batch 3) (3rd)	0d			7d	18-Apr-17	24-Apr-17	0%	-151d						
150	DE210780	IC checks & certifies SCADA/PLC System (Batch 3) (3rd)	0d			7d	25-Apr-17	01-May-17	0%	-151d						
151	DE210790	Employer consents to SCADA/PLC System (Batch 3)	0d			0d		15-May-17	0%	-151d						
152	DETAILED DESIGN SUBMISSION (DDS) - BUILDING SERVICES		45d	09-Sep-15	04-Nov-15	55d	15-Jul-15 A	27-Apr-17	203d	-436d						
153	Fire Services Installations (FSI)		33d	09-Sep-15	21-Oct-15	33d	15-Mar-17	27-Apr-17		-92d	-448d					
154			33d	09-Sep-15	21-Oct-15	33d	15-Mar-17	27-Apr-17		-92d	-448d					
155			33d	09-Sep-15	21-Oct-15	33d	15-Mar-17	27-Apr-17		-92d	-448d					
156	DS110250	Submit Fire Safety, Dangerous Goods & FSI Detailed Design to IC, ER & Employer	0d		09-Sep-15	0d		15-Mar-17*	0%	-79d	-374d					
157	DS110300	IC checks & comments on Fire Safety, Dangerous Goods & FSI Detailed Design	14d	10-Sep-15	23-Sep-15	14d	17-Mar-17	30-Mar-17	0%	-116d	-554d					
158	DS110350	Revise & resubmit Fire Safety, Dangerous Goods & FSI Detailed Design to IC, Employer & ER	7d	24-Sep-15	30-Sep-15	7d	31-Mar-17	06-Apr-17	0%	-116d	-554d					
159	DS110400	IC checks & certifies Fire Safety, Dangerous Goods & FSI Detailed Design	7d	01-Oct-15	07-Oct-15	7d	07-Apr-17	13-Apr-17	0%	-116d	-554d					
160	DS110450	Employer consents to Fire Safety, Dangerous Goods & FSI Detailed Design	0d		21-Oct-15	0d		27-Apr-17	0%	-116d	-554d					
161	Waste Receiving, Pre-treatment & Administration Bldg #1		0d			48d	28-Jul-15 A	06-Apr-17		269d						
162	BS - Electrical		0d			48d	28-Jul-15 A	06-Apr-17		269d						
163			0d			48d	28-Jul-15 A	06-Apr-17		269d						
164	DS120206	IC checks & certifies Bldg #1 BS Electrical System DDS (incl. Re-submissions)	0d			34d	28-Jul-15 A	23-Mar-17	91%	269d						
165	DS120208	Employer consents to Bldg #1 BS Electrical System DDS	0d			0d		06-Apr-17	0%	269d						
166	Composting & Maturation Building #2		0d			45d	15-Jul-15 A	03-Apr-17		272d						
167	BS - Electrical		0d			45d	15-Jul-15 A	03-Apr-17		272d						
168			0d			45d	15-Jul-15 A	03-Apr-17		272d						
169	DS130206	IC checks & certifies Bldg #2 BS Electrical System DDS (incl. Re-submissions)	0d			31d	15-Jul-15 A	20-Mar-17	91%	272d						
170	DS130208	Employer consents to Bldg #2 BS Electrical System DDS	0d			0d		03-Apr-17	0%	272d						
171	Auxiliary Building & Facilities #3		0d	04-Nov-15	04-Nov-15	41d	24-Feb-17	13-Apr-17		212d	-427d					
172	BS - Fire Services		0d			41d	24-Feb-17	13-Apr-17		-140d						
173			0d			41d	24-Feb-17	13-Apr-17		-140d						
174	DS140510	Prepare & make Bldg #3 Aux. Facilities BS Detailed Design - Street Fire Hydrant System to IC, ER & Employer	0d			5d	24-Feb-17	02-Mar-17	0%	-116d						
175	DS140520	IC checks & comments on Bldg #3 & Aux. Facilities Street Fire Hydrant System DDS	0d			14d	03-Mar-17	16-Mar-17	0%	-171d						
176	DS140530	Revise & resubmit Bldg #3 & Aux. Facilities Street Fire Hydrant System DDS to IC, Employer & ER	0d			7d	17-Mar-17	23-Mar-17	0%	-171d						
177	DS140540	IC checks & certifies Bldg #3 & Aux. Facilities Street Fire Hydrant System DDS	0d			7d	24-Mar-17	30-Mar-17	0%	-171d						

#	Activity ID	Activity Name	BL Project Duration	BL Project Start	BL Project Finish	Remaining Duration	Start	Finish	Activity % Complete	Total Float	Variance - BL Project	2017				
												Feb	Mar	Apr	May	
178	DS140560	Employer consents to Bldg #3 & Aux. Facilities Street Fire Hydrant System DDS	0d			0d		13-Apr-17	0%	-171d				◆ Employer consents to Bldg #3 & Aux. Facilities Street Fire Hydrant System		
179	BS - MVAC		0d	04-Nov-15	04-Nov-15	0d	15-Mar-17	15-Mar-17	291d	-497d						
180	Employer consents to Bldg #3 & Aux. Facilities BS MVAC System		0d	04-Nov-15	04-Nov-15	0d	15-Mar-17	15-Mar-17	291d	-497d				◆ Employer consents to Bldg #3 & Aux. Facilities BS MVAC System		
181	DS140400	Employer consents to Bldg #3 & Aux. Facilities BS MVAC System	0d			0d		15-Mar-17*	0%	291d	-497d					
182	STATUTORY AND UTILITIES DESIGN SUBMISSION		28d	19-Sep-15	16-Oct-15	115d	30-Nov-15 A	12-Jun-17		-53d	-605d					
183	General		28d	19-Sep-15	16-Oct-15	115d	30-Nov-15 A	12-Jun-17		-53d	-605d					
184	CLP - Approval of Submission Package on Grid Arrangement		28d	19-Sep-15	16-Oct-15	115d	30-Nov-15 A	12-Jun-17	92%	-53d	-605d					
185	SU110360	CLP - Approval of Submission Package on Grid Arrangement	28d	19-Sep-15	16-Oct-15	115d	30-Nov-15 A	12-Jun-17	92%	-53d	-605d					
186	SU110470	WSD - Approval for Process Water Supply	0d			13d	09-Jan-17 A	02-Mar-17	75%	-120d				WSD - Approval for Process Water Supply		
187	SU110480	WSD & FSD - Approval for Street Fire Hydrant Water Supply	0d			13d	24-Jan-17 A	02-Mar-17	70%	-174d				WSD & FSD - Approval for Street Fire Hydrant Water Supply		
188	PROCUREMENT, MANUFACTURING, F.A.T., SHIPMENT AND DELIVERY OF E		376d	12-Feb-15	25-May-16	117d	01-Mar-15 A	13-Jul-17		135d	-336d					
189	Waste Receiving, Storage and Feeding System		133d	09-Jul-15	18-Jan-16	54d	04-Dec-15 A	11-May-17		-58d	-322d					
190	General		133d	09-Jul-15	18-Jan-16	54d	04-Dec-15 A	11-May-17		-58d	-322d					
191	PR200100	Weighbridge Platform	103d	09-Jul-15	03-Dec-15	19d	04-Dec-15 A	16-Mar-17	96%	-89d	-317d			Weighbridge Platform		
192	PR200120	Weighbridge Computer System	61d	22-Oct-15	18-Jan-16	30d	04-Dec-15 A	31-Mar-17	96%	-34d	-298d			Weighbridge Computer System		
193	PR210110	High Jet Water Spray Gun System	0d			22d	20-Mar-17*	21-Apr-17	0%	-108d				High Jet Water Spray Gun System		
194	PR210130	Vehicle Wash Plant 5th Bay	0d			25d	31-Mar-17*	11-May-17	0%	-117d				Vehicle Wash Plant		
195	Pre-Treatment System		123d	21-Jul-15	14-Jan-16	43d	16-Jul-16 A	24-Apr-17		-106d	-313d					
196	General		123d	21-Jul-15	14-Jan-16	43d	16-Jul-16 A	24-Apr-17		-106d	-313d					
197	PR110205	Metal Separator	0d			0d	16-Jul-16 A	01-Feb-17 A	100%					Metal Separator		
198	PR110260	Overhead Travelling Crane	123d	21-Jul-15	14-Jan-16	0d	16-Jul-16 A	06-Feb-17 A	100%		-261d			Overhead Travelling Crane		
199	PR110270	Monorail	0d			18d	16-Jul-16 A	15-Mar-17	99%	-81d				Monorail		
200	PR110420	Belt Conveyor	0d			0d	16-Jul-16 A	01-Feb-17 A	100%					Belt Conveyor		
201	PR110440	Platform (Pre-treatment)	0d			28d	13-Mar-17*	24-Apr-17	0%	-115d				Platform (Pre-treatment)		
202	Anaerobic Digestion (AD) Treatment System		64d	22-Oct-15	21-Jan-16	28d	11-Jul-16 A	29-Mar-17		-84d	-293d					
203	General		64d	22-Oct-15	21-Jan-16	28d	11-Jul-16 A	29-Mar-17		-84d	-293d					
204	PR120190	Overflow Tank	0d			0d	18-Nov-16 A	18-Jan-17 A	100%					Overflow Tank		
205	PR120200	Intermediate Digestate Tanks	64d	22-Oct-15	21-Jan-16	28d	18-Nov-16 A	29-Mar-17	68%	-84d	-293d			Intermediate Digestate Tanks		
206	PR120220	Monorail (Suspension Buffer Pump Room)	0d			0d	11-Jul-16 A	25-Jan-17 A	100%					Monorail (Suspension Buffer Pump Room)		
207	Biogas Cleaning, Storage and Distribution System		77d	19-Nov-15	23-Feb-16	37d	16-Mar-16 A	01-Apr-17		-128d	-329d					
208	Biogas Cleaning and Storage System		77d	19-Nov-15	23-Feb-16	37d	16-Mar-16 A	01-Apr-17		-128d	-329d					
209	PR130140	Biogas Storage Tank Holder	64d	19-Nov-15	23-Feb-16	37d	16-Mar-16 A	01-Apr-17	96%	-128d	-329d			Biogas Storage Tank Holder		
210	PR130150	Biogas Storage Tank Holder Steel Casing	0d			37d	16-Mar-16 A	01-Apr-17	96%	-128d	-329d			Biogas Storage Tank Holder Steel Casing		
211	Combined Heat Recovery and Power (CHP) Generation System		13d	15-Mar-15	30-Mar-15	60d	14-May-15 A	05-May-17		-140d	-618d					
212	General		13d	15-Mar-15	30-Mar-15	60d	14-May-15 A	05-May-17		-140d	-618d					
213	PR140100	Issue orders & receive shop drawings from CHP suppliers	16d	15-Mar-15	30-Mar-15	11d	14-May-15 A	28-Feb-17	97.2%	-174d	-701d			Issue orders & receive shop drawings from CHP suppliers		
214	PR140170	CHP Stack (Insulation and Platform)	0d			43d	01-Mar-17	05-May-17	0%	-117d				CHP Stack (Insulation and Platform)		
215	Digestate Dewatering System		315d	12-Feb-15	25-May-16	30d	20-May-15 A	31-Mar-17		-38d	-213d					
216	General		315d	12-Feb-15	25-May-16	30d	20-May-15 A	31-Mar-17		-38d	-213d					
217	PR170110	Issue orders & receive shop drawings from Digestate Dewatering suppliers	18d	12-Feb-15	11-Mar-15	0d	20-May-15 A	23-Jan-17 A	100%		-463d			Issue orders & receive shop drawings from Digestate Dewatering suppliers		
218	PR170170	Centrate Tank	0d			0d	18-Oct-16 A	20-Jan-17 A	100%					Centrate Tank		
219	PR170171	Platform at Dewatering Area	0d			18d	23-Jan-17 A	15-Mar-17	38%	-117d				Platform at Dewatering Area		
220	PR170174	Polymer Storage Tank	0d			30d	30-Jun-16 A	31-Mar-17	88%	-118d				Polymer Storage Tank		
221	PR170177	Break Tank	0d			0d	02-Sep-16 A	20-Jan-17 A	100%					Break Tank		
222	PR170180	Polymer Dosing System	143d	27-Oct-15	25-May-16	30d	30-Jun-16 A	31-Mar-17	88%	-38d	-213d			Polymer Dosing System		
223	PR170230	Anti-Foaming and Anti-Scalant Station	0d			30d	30-Jun-16 A	31-Mar-17	88%	-89d				Anti-Foaming and Anti-Scalant Station		
224	PR170250	Monorail (Dewatering)	0d			0d	11-Jul-16 A	06-Feb-17 A	100%					Monorail (Dewatering)		
225	Composting System (Composting Tunnel, Maturation Area and Structurant Reception)		143d	09-Sep-15	11-Apr-16	47d	20-May-16 A	28-Apr-17		164d	-261d					
226	General		143d	09-Sep-15	11-Apr-16	47d	20-May-16 A	28-Apr-17		164d	-261d					
227	PR170140	Mixing Unit	143d	09-Sep-15	11-Apr-16	30d	20-May-16 A	31-Mar-17	90%	-96d	-244d			Mixing Unit		
228	PR170200	Compost Bagging Machine	103d	09-Sep-15	05-Feb-16	47d	19-Sep-16 A	28-Apr-17	85%	164d	-301d			Compost Bagging Machine		
229	PR170280	Tunnel Doors	103d	09-Sep-15	05-Feb-16	0d	02-Nov-16 A	07-Feb-17 A	100%		-246d			Tunnel Doors		

#	Activity ID	Activity Name	BL Project Duration	BL Project Start	BL Project Finish	Remaining Duration	Start	Finish	Activity % Complete	Total Float	Variance - BL Project	2017				
												Feb	Mar	Apr	May	
238	Wastewater Treatment System (WWTS)															
239	General															
240			266d	16-Mar-15	13-Apr-16	67d	08-Jul-15 A	31-May-17		-100d	-279d					
241	PR150100	Issue orders & receive shop drawings from WWTS suppliers	17d	16-Mar-15	10-Apr-15	9d	08-Jul-15 A	02-Mar-17	98%	-42d	-470d					
242	PR150120	Wastewater Treatment Plant (General)	103d	24-Sep-15	25-Feb-16	0d	11-Dec-15 A	19-Jan-17 A	100%		-224d					
243	PR150130	Wastewater Treatment Plant (Chemical Dosing System)	0d			62d	27-Feb-17*	31-May-17	0%	-100d						
244	PR150140	Ammonia Stripping Plant	134d	24-Sep-15	13-Apr-16	7d	24-Dec-15 A	28-Feb-17	96%	-40d	-219d					
245	PR150170	GRP Tank	0d			28d	17-Jun-16 A	29-Mar-17	82%	-61d						
246	PR150200	Air Blowers	0d			7d	16-Aug-16 A	28-Feb-17	92%	-120d						
247	PR150240	ASP Stack (Insulation and Platform)	0d			43d	01-Mar-17*	05-May-17	0%	-85d						
248	PR150260	Diesel Tank (ASP)	0d			0d	23-Dec-16 A	17-Feb-17 A	100%							
249	Centralized Air Pollution Control (CAPC) System															
250	General															
251			18d	12-Feb-15	11-Mar-15	47d	30-May-15 A	28-Apr-17		-107d	-527d					
252	PR180100	Issue orders & receive shop drawings from CAPC suppliers	18d	12-Feb-15	11-Mar-15	6d	30-May-15 A	27-Feb-17	98%	-76d	-486d					
253	PR180140	GRP Tanks	0d			28d	02-Sep-16 A	29-Mar-17	79%	-98d						
254	PR180152	GRP Ductworks (Batch 2 - Building 2)	0d			5d	04-Jun-16 A	24-Feb-17	94%	-81d						
255	PR180154	GRP Ductworks (Batch 3 - AD)	0d			18d	24-Jun-16 A	15-Mar-17	82%	-119d						
256	PR180155	GRP Ductworks (Batch 4 - Building 1)	0d			42d	27-Feb-17*	28-Apr-17	0%	-107d						
257	PR180215	Inline Fans	0d			22d	30-Dec-16 A	21-Mar-17	48%	-106d						
258	Bulk Material															
259	Pipework and Pipe Racks (including Pre-fabrication in Factory)															
260			233d	09-Mar-15	17-Dec-15	46d	16-Sep-15 A	13-Apr-17		-10d	-390d					
261	PR220050	Issue orders & receive shop drawings from Mechanical Equipment suppliers	20d	09-Mar-15	08-Apr-15	0d	16-Sep-15 A	17-Feb-17 A	100%		-463d					
262	PR220055	Pipework (SS316) for Building 1 Waste Receiving & Pre-treatment	0d			11d	05-Aug-16 A	06-Mar-17	88%	-117d						
263	PR220056	Pipework (SS316) for Building 1 (Others)	0d			11d	21-Sep-16 A	06-Mar-17	89%	-119d						
264	PR220057	Pipework (SS316) for Building 2	0d			8d	05-Aug-16 A	01-Mar-17	82%	-96d						
265	PR220058	Pipework (SS316) for AD Pipe Racks	0d			5d	05-Aug-16 A	24-Feb-17	92%	-105d						
266	PR220059	Pipework (SS316) for AD (Others)	0d			7d	17-Oct-16 A	28-Feb-17	82%	-78d						
267	PR220060	Pipework (SS316) for Biogas Pipe Racks	0d			21d	22-Aug-16 A	20-Mar-17	78%	9d						
268	PR220061	Pipework (SS316) for Biogas Area	0d			6d	03-Oct-16 A	27-Feb-17	88%	-86d						
269	PR220062	Pipework (SS316) for Hot Water Room	0d			6d	05-Aug-16 A	27-Feb-17	91%	-78d						
270	PR220065	Pipework (DI)	0d			30d	19-Jan-16 A	31-Mar-17	92%	-94d						
271	PR220100	Pipework (uPVC)	105d	21-Jul-15	17-Dec-15	38d	19-Jan-16 A	13-Apr-17	95%	-113d	-326d					
272	PR220200	Pipe Rack 1 Structure	0d			15d	14-Dec-16 A	07-Mar-17	75%	-133d						
273	PR220280	Pipe Rack 3,4 and Pipe Crossing 1,2 Structure	0d			36d	14-Dec-16 A	31-Mar-17	55%	-114d						
274	PR220290	Pipe Rack 2 Structure	0d			36d	14-Dec-16 A	31-Mar-17	55%	0d						
275	General															
276			228d	17-Jun-15	18-May-16	98d	23-Nov-15 A	13-Jul-17		-49d	-286d					
277	PR220105	Roller Shutters (UK)	0d			25d	27-Oct-16 A	24-Mar-17	80%	-114d						
278	PR220108	Lifting Appliance	0d			18d	11-Jul-16 A	15-Mar-17	92%	-85d						
279	PR220110	Issue orders & receive shop drawings from Platforms, Handrails & Ladders suppliers	20d	17-Jun-15	15-Jul-15	11d	23-Nov-15 A	06-Mar-17	98%	-47d	-407d					
280	PR220120	Platforms, Handrails and Ladders	90d	05-Nov-15	16-Mar-16	50d	07-Mar-17*	22-May-17	0%	-47d	-290d					
281	PR220130	Issue orders & receive shop drawings from Mobile Plants suppliers	40d	22-Sep-15	19-Nov-15	27d	06-Jan-17 A	28-Mar-17	42%	-49d	-335d					
282	PR220140	Mobile Plants	120d	20-Nov-15	18-May-16	51d	02-May-17	13-Jul-17	0%	-49d	-286d					
283	PR220150	Issue orders & receive shop drawings from Laboratory Equipment Suppliers	0d			33d	24-Feb-17*	12-Apr-17	0%	-64d						
284	PR220190	Laboratory Equipment	0d			51d	13-Apr-17	29-Jun-17	0%	-64d						
285	Valves															
286			0d			38d	27-Jun-16 A	13-Apr-17		-85d						
287	PR220101	3-Way Valve	0d			18d	27-Sep-16 A	15-Mar-17	80%	-65d						
288	PR220160	Gate Valve	0d			38d	27-Jun-16 A	13-Apr-17	81%	-97d						
289	PR220230	Pressure Regulating Valve	0d			18d	30-Nov-16 A	15-Mar-17	78%	-72d						
290	PR220240	Pressure Relief Valve	0d			18d	30-Nov-16 A	15-Mar-17	78%	-65d						
291	PR220250	Solenoid Valve	0d			21d	28-Feb-17*	28-Mar-17	0%	-81d						
292	PR220270	Electric Actuator for Ball Valve and Gate Valve	0d			30d	27-Jun-16 A	31-Mar-17	82%	-89d						
293	Electrical System & Accessories															
			72d	19-Oct-15	14-Jan-16	56d	11-Jul-16 A	28-Apr-17		-74d	-379d					

#	Activity ID	Activity Name	BL Project Duration	BL Project Start	BL Project Finish	Remaining Duration	Start	Finish	Activity % Complete	Total Float	Variance - BL Project	2017				
												Feb	Mar	Apr	May	
294	Electrical System & Accessories		72d	19-Oct-15	14-Jan-16	56d	11-Jul-16 A	28-Apr-17		-136d	-379d					
295	PR230125	MCC and Electrical Accessories System (Pre-treatment)	0d	19-Oct-15	14-Jan-16	56d	11-Jul-16 A	28-Apr-17		-136d	-379d					
296	PR230125	MCC and Electrical Accessories System (Pre-treatment)	0d			17d	03-Aug-16 A	09-Mar-17	92%	-104d						
297	PR230135	MCC and Electrical Accessories System (CAPCS)	0d			17d	03-Aug-16 A	09-Mar-17	92%	-112d						
298	PR230155	MCC and Electrical Accessories System (WWTP)	0d			17d	03-Aug-16 A	09-Mar-17	92%	-127d						
299	PR230165	MCC and Electrical Accessories System (AD)	0d			14d	15-Jul-16 A	06-Mar-17	96%	-94d						
300	PR230175	MCC and Electrical Accessories System (Biogas Cleaning & Storage)	0d			14d	15-Jul-16 A	06-Mar-17	96%	-114d						
301	PR230178	MCC and Electrical Accessories System (Heat Recovery & Power Generation)	0d			14d	03-Aug-16 A	06-Mar-17	92%	-118d						
302	PR230180	Cables (HV & LV) and Accessories, Cable Containment System	61d	19-Oct-15	14-Jan-16	47d	11-Jul-16 A	28-Apr-17	86%	-121d	-317d					
303	PR230190	FAT of MCC (2nd batch - Remaining)	0d			0d	16-Jan-17 A	20-Jan-17 A	100%							
304	PR230240	Diesel Tank (Genset)	0d			0d	19-Aug-16 A	17-Feb-17 A	100%							
305	11kV / 380V Stepdown Transformers		0d			42d	01-Dec-16 A	08-Apr-17		-60d						
306	PR230280	Phasor Measurement Units (PMU) by CLP	0d			42d	01-Dec-16 A	08-Apr-17		-60d						
307	PR230280	Phasor Measurement Units (PMU) by CLP	0d			42d	01-Dec-16 A	08-Apr-17	41.67%	-60d						
308	SCADA /PLC System		222d	27-May-15	22-Feb-16	56d	01-Mar-15 A	29-Apr-17		-114d	-350d					
309	General		222d	27-May-15	22-Feb-16	56d	01-Mar-15 A	29-Apr-17		-114d	-350d					
310	General		222d	27-May-15	22-Feb-16	56d	01-Mar-15 A	29-Apr-17		-114d	-350d					
311	PR240100	Issue orders & receive shop drawings from SCADA/PLC suppliers	20d	27-May-15	23-Jun-15	0d	01-Mar-15 A	01-Feb-17 A	100%		-399d					
312	PR240120	SCADA/PLC System and component (Batch 1)	83d	22-Oct-15	22-Feb-16	0d	08-Jul-16 A	17-Feb-17 A	100%		-246d					
313	PR240160	SCADA/PLC System and component (Batch 2)	0d			9d	19-Aug-16 A	02-Mar-17	90%	-90d						
314	PR240200	SCADA/PLC System and component (Batch 3)	0d			37d	01-Feb-17 A	12-Apr-17	11%	-85d						
315	PR240220	FAT of SCADA/PLC System (Batch 3)	0d			36d	15-Mar-17*	29-Apr-17	0%	-123d						
316	Building Services Equipment (Including Lift & Renewable Energy System)		311d	12-Feb-15	03-Mar-16	72d	17-Aug-15 A	21-May-17		-87d	-357d					
317	General		20d	12-Feb-15	13-Mar-15	60d	17-Aug-15 A	19-May-17		-100d	-538d					
318	General		20d	12-Feb-15	13-Mar-15	60d	17-Aug-15 A	19-May-17		-100d	-538d					
319	PR250100	Issue orders & receive shop drawings from BS suppliers	20d	12-Feb-15	13-Mar-15	4d	17-Aug-15 A	23-Feb-17	98%	-116d	-482d					
320	PR250130	Lifting Platform	0d			40d	20-Mar-17*	19-May-17	0%	-100d						
321	BS - Electrical		81d	05-Nov-15	03-Mar-16	30d	08-Jun-16 A	31-Mar-17		-42d	-268d					
322	BS - Electrical		81d	05-Nov-15	03-Mar-16	30d	08-Jun-16 A	31-Mar-17		-42d	-268d					
323	PR250225	BS - Light Fittings	0d			30d	07-Sep-16 A	31-Mar-17	62%	-42d						
324	PR250230	ELV System Equipment	81d	05-Nov-15	03-Mar-16	20d	08-Jun-16 A	17-Mar-17	92%	-105d	-258d					
325	BS - Fire Services		97d	05-Nov-15	03-Mar-16	71d	21-Feb-17	21-May-17		-137d	-357d					
326	BS - Fire Services		97d	05-Nov-15	03-Mar-16	71d	21-Feb-17	21-May-17		-137d	-357d					
327	PR250210	Fire Services System Equipment (Fire Damper)	81d	05-Nov-15	03-Mar-16	23d	01-Mar-17*	31-Mar-17	0%	-87d	-268d					
328	PR250212	Fire Services System Equipment (FM200)	0d			23d	01-Mar-17*	31-Mar-17	0%	-93d						
329	PR250214	Fire Services System Equipment (AFA)	0d			23d	01-Mar-17*	31-Mar-17	0%	-107d						
330	PR250250	Street Fire Hydrant System GRP Tanks and Associated Pipework	0d			90d	21-Feb-17	21-May-17	0%	-174d						
331	BS - MVAC		137d	14-Aug-15	03-Mar-16	47d	07-Sep-16 A	28-Apr-17		-66d	-285d					
332	BS - MVAC		137d	14-Aug-15	03-Mar-16	47d	07-Sep-16 A	28-Apr-17		-66d	-285d					
333	PR250170	Cooling Tower	81d	05-Nov-15	03-Mar-16	47d	04-Nov-16 A	28-Apr-17	55%	-66d	-285d					
334	PR250180	Chilled Water Circulation Pumps	83d	14-Aug-15	11-Dec-15	47d	07-Sep-16 A	28-Apr-17	62%	-116d	-339d					
335	PR250200	Air Handling Units	83d	14-Aug-15	11-Dec-15	47d	13-Oct-16 A	28-Apr-17	58%	-104d	-339d					
336	PR250240	Fan Coil Units	0d			47d	16-Nov-16 A	28-Apr-17	64%	-113d						
337	Process Utilities (Compressed Air, Process Water, Process Clean Water)		0d			30d	27-Sep-16 A	31-Mar-17		169d						
338	General		0d			30d	27-Sep-16 A	31-Mar-17		169d						
339	General		0d			30d	27-Sep-16 A	31-Mar-17		169d						
340	PR260120	Process Water System	0d			18d	28-Dec-16 A	15-Mar-17	53%	181d						
341	PR260140	Process Clean Water System	0d			30d	27-Sep-16 A	31-Mar-17	80%	-104d						
342	Hot Water System		0d			47d	17-Aug-16 A	28-Apr-17		142d						
343	Hot Water System		0d			47d	17-Aug-16 A	28-Apr-17		142d						
344	Hot Water System		0d			47d	17-Aug-16 A	28-Apr-17		142d						
345	PR140220	Insulation and Cladding	0d			42d	27-Feb-17*	28-Apr-17	0%	142d						
346	PR140240	Break Tank	0d			18d	02-Sep-16 A	15-Mar-17	88%	-98d						
347	PR140280	Softener	0d			18d	17-Aug-16 A	15-Mar-17	90%	-120d						
348	CIVIL AND STRUCTURAL WORKS		330d	02-Sep-15	13-Oct-16	148d	13-Nov-15 A	18-Aug-17		-95d	-251d					
349	General		0d			3d	07-Mar-17	09-Mar-17		-35d						
350	General		0d			3d	07-Mar-17	09-Mar-17		-35d						
351	General		0d			3d	07-Mar-17	09-Mar-17		-35d						
352	PR100030	Dismantle of Tower Crane	0d			3d	07-Mar-17*	09-Mar-17	0%	-35d						
353	Waste Receiving, Pre-treatment & Administration Building #1 (Zone #1)		209d	24-Oct-15	09-Jul-16	102d	04-Nov-16 A	24-Jun-17		-79d	-284d					
354	Substructure at Grid 6-15/H-K.5 - Part A (Adm. Building)		0d			15d	10-Mar-17	27-Mar-17		-35d						

#	Activity ID	Activity Name	BL Project Duration	BL Project Start	BL Project Finish	Remaining Duration	Start	Finish	Activity % Complete	Total Float	Variance - BL Project	2017			
												Feb	Mar	Apr	May
355			0d			15d	10-Mar-17	27-Mar-17	0%	-35d					
356	CC100130	Bay J Footing - Tower Crane Area	0d			15d	10-Mar-17	27-Mar-17	0%	-35d					
357		Superstructure at Grid 6-10/L-Q - Part B (WWTP)	0d			72d	04-Nov-16 A	19-May-17		-57d					
358		ABWF Works	0d			72d	04-Nov-16 A	19-May-17		-57d					
359	CC112210	Clearance of Internal Area of G/F (Part B)	0d			18d	04-Nov-16 A	10-Mar-17	86%	-142d					
360	CC112230	ABWF Works at G/F (Part B)	0d			27d	19-Dec-16 A	21-Mar-17	62.5%	-145d					
361	CC112280	External and Remaining ABWF Works (Part B)	0d			45d	22-Mar-17	19-May-17	0%	-57d					
362		Handover of Works to E&M	0d			13d	10-Feb-17 A	15-Mar-17		-45d					
363	CC112300	Handover G/F to E&M Works (Zone #1.1.5 Part B - Building 1 - WWTP Area - SBR Tanks)	0d			0d	10-Feb-17 A		100%						
364	CC112305	Handover G/F to E&M Works (Zone #1.1.5 Part B - Building 1 - WWTP Area - Air Compressor Room)	0d			0d	28-Feb-17		0%	-114d					
365	CC112310	Handover G/F to E&M Works (Zone #1.1.5 Part B - Building 1 - WWTP Area - DG Stores)	0d			0d	15-Mar-17		0%	-45d					
366	CC112320	Handover G/F to E&M Works (Zone #1.1.5 Part B - Building 1 - WWTP Air Blowers Area)	0d			0d	03-Mar-17		0%	-145d					
367		Superstructure at Grid 6-15/H-K.5 - Part A (Adm. Building, Workshop & F.S. Pump Rm.)	0d			102d	15-Nov-16 A	24-Jun-17		-79d					
368		G/F to 1/F @+14.200	0d			20d	28-Mar-17	24-Apr-17		-35d					
369	CC100605	Bay J - Structure at Tower Crane Area	0d			20d	28-Mar-17	24-Apr-17	0%	-35d					
370		CAPCS Stack	0d			47d	09-Mar-17	09-May-17		-132d					
371	CC100725	Fabricate & Deliver CAPCS Structural Steelwork	0d			29d	09-Mar-17	12-Apr-17	0%	-132d					
372	CC100730	CAPCS Stack to +32.000 (Structural Steelwork)	0d			18d	13-Apr-17	09-May-17	0%	-132d					
373		ABWF Works	0d			102d	15-Nov-16 A	24-Jun-17		-79d					
374	CC100630	ABWF Works at G/F (Part A - incl. Contractor's Office)	0d			25d	15-Nov-16 A	18-Mar-17	55.36%	-100d					
375	CC100650	Erect bamboo working platform at Internal Area of Mess Lev. & 1/F (Part A)	0d			0d	19-Dec-16 A	04-Feb-17 A	100%						
376	CC100660	ABWF Works at M/F (Part A - incl. Plant Rooms, Laboratory, Changing Rooms and CCR)	0d			39d	06-Jan-17 A	05-Apr-17	43%	-143d					
377	CC100662	ABWF Works at 1/F (Part A - incl. EPD's Office)	0d			36d	21-Mar-17	08-May-17	0%	-126d					
378	CC100664	ABWF Works at R/F (Part A)	0d			18d	12-Apr-17	08-May-17	0%	-79d					
379	CC100670	Removal of Scaffolding and Working Platform (Part A)	0d			0d		08-May-17	0%	-79d					
380	CC100680	External and Remaining ABWF Works (Part A)	0d			75d	22-Mar-17	24-Jun-17	0%	-79d					
381		Handover of Works to E&M	0d			54d	21-Jan-17 A	09-May-17		-105d					
382	CC100690	Handover G/F to E&M Works (Zone #1.1.3 Part A - Building 1 Workshop)	0d			0d	26-Jan-17 A		100%						
383	CC100691	Handover G/F to E&M Works (Zone #1.1.3 Part A - Building 1 F.S.Pump Rm.)	0d			0d	21-Jan-17 A		100%						
384	CC100692	Handover G/F to E&M Works (Zone #1.1.4 Part A - Building 1 WWTP MCC Room)	0d			0d	28-Feb-17		0%	-100d					
385	CC100830	Handover G/F to E&M Works (Zone #1.2.2 Part A - Building 1 Adm. Bldg. Grid H-L/10-15, incl. Contractor's Office)	0d			0d	20-Mar-17		0%	-85d					
386	CC100835	Handover G/F to E&M Works (Zone #1.2.2 Part A - Building 1 Adm. Bldg. F.S. Control Room)	0d			0d	20-Mar-17		0%	-68d					
387	CC100840	Handover M/F to E&M Works (Zone #1.2.3 Part A - Building 1 Adm. Bldg. Plant Room, Changing Room, Lab. & Corridor at GL.11)	0d			0d	09-Mar-17		0%	-94d					
388	CC100845	Handover M/F to E&M Works (Zone #1.2.3 Part A - Building 1 Adm. Bldg. Central Control Room)	0d			0d	06-Apr-17		0%	-143d					
389	CC100850	Handover 1/F to E&M Works (Zone #1.2.4 Part A - Building 1 Adm. Bldg. incl. EPD's Office)	0d			0d	09-May-17		0%	-126d					
390		Superstructure at Grid 10-15/K.5-Q - Part C (Bunker & Influence Zone)	149d	06-Jan-16	09-Jul-16	90d	02-Dec-16 A	10-Jun-17		-67d	-272d				
391		M/F to 1/F @+17.200	0d			9d	02-Dec-16 A	28-Feb-17		-5d					
392	CC102210	Construct Roof at Temporary Opening at +17.20mP.D.	0d			0d	02-Dec-16 A	17-Jan-17 A	100%						
393	CC102214	Concrete Curing and Scaffolding Removal	0d			11d	18-Jan-17 A	28-Feb-17	73.81%	-6d					
394	CC102216	Remaining Chiller / Plant Room at 1/F	0d			0d	18-Jan-17 A	24-Jan-17 A	100%						
395		ABWF Works	149d	06-Jan-16	09-Jul-16	90d	12-Dec-16 A	10-Jun-17		-67d	-272d				
396	CC102280	Erect bamboo working platform at Internal Area of G/F (Part C)	12d	06-Jan-16	19-Jan-16	14d	12-Dec-16 A	06-Mar-17	78%	-130d	-333d				
397	CC102300	ABWF Works at G/F (Part C - SBT Pump Room, Bay E and Bay G)	24d	20-Jan-16	19-Feb-16	25d	19-Dec-16 A	18-Mar-17	54.55%	-141d	-320d				
398	CC102302	ABWF Works at G/F (Part C - Bay D - Temporary Opening Filled)	0d			26d	11-Feb-17 A	20-Mar-17	11%	-87d					
399	CC102360	ABWF Works at 1/F and R/F (Part C - Pre-treatment and CAPCS MCC Rooms)	40d	29-Mar-16	17-May-16	0d	05-Jan-17 A	17-Feb-17 A	100%		-226d				
400	CC102362	ABWF Works at G/F, 1/F and R/F (Part C - incl. Chiller / Plant Room) - Temporary Opening Filled	0d			34d	23-Jan-17 A	29-Mar-17	32%	-142d					
401	CC102370	Removal of Scaffolding and Working Platform (Part C)	0d			0d		01-Apr-17	0%	-40d	-263d				
402	CC102380	External and Remaining ABWF Works (Part C)	85d	24-Mar-16	09-Jul-16	85d	24-Feb-17	10-Jun-17	0%	-67d	-272d				
403		Handover of Works to E&M	56d	04-Feb-16	18-Apr-16	34d	18-Feb-17	30-Mar-17		-95d	-284d				
404	CC101804	Handover G/F to E&M Works (Zone #1.1.7 Part C - Building 1 GL.11-13/K-M-Area E1)	0d			0d	28-Feb-17		0%	-131d					
405	CC101805	Handover G/F to E&M Works (Zone #1.1.7 Part C - Building 1 GL.13-15/K-M-Area E2)	0d			0d	20-Mar-17		0%	-141d					
406	CC101807	Handover G/F to E&M Works (Zone #1.1.8 Part C - Building 1 - Area D1 Bunker & Crusher area)	0d			0d	21-Mar-17		0%	-87d					
407	CC101808	Handover G/F to E&M Works (Zone #1.1.8 Part C - Building 1 - Area D2 Waste Inspection Area and Access Platform)	0d			0d	08-Mar-17		0%	-76d					
408	CC102400	Handover G/F to E&M Works (Zone #1.1.9 Part C - Building 1 - Area G1 RCV Bay 1 & 2)	0d			0d	20-Feb-17		0%	-139d	-307d				

#	Activity ID	Activity Name	BL Project Duration	BL Project Start	BL Project Finish	Remaining Duration	Start	Finish	Activity % Complete	Total Float	Variance - BL Project	2017						
												Feb	Mar	Apr	May			
409	CC102405	Handover G/F to E&M Works (Zone #1.1.9 Part C - Building 1 - Area G2 RCV Bay 3 & 4)	0d			0d	20-Feb-17		0%	-127d								
410	CC102410	Handover 1/F to E&M Works (Zone #1.2.5 Part C - Building 1 - CAPCS Area - Grid L-Q/12-15, +17.350) - Temp. Opg. Filled	0d			0d	30-Mar-17		0%	-142d								
411	CC102411	Handover 1/F to E&M Works (Zone #1.2.5 Part C - Building 1 - Pre-treatment MCC Room, +17.350)	0d			0d	18-Feb-17		0%	-87d								
412	CC102412	Handover 1/F to E&M Works (Zone #1.2.5 Part C - Building 1 - CAPCS MCC Rooms, +17.350)	0d			0d	18-Feb-17		0%	-87d								
413	CC102415	Handover 1/F to E&M Works (Zone #1.2.6 Part C - Building 1 - Chiller Plant Room Area)	0d			0d	30-Mar-17		0%	-117d								
414	CC102420	Handover 1/F to E&M Works (Zone #1.2.7 Part C - Building 1 - Other Remaining Area)	0d	18-Apr-16		0d	30-Mar-17		0%	-97d	-284d							
415	Steel Roof & Covered Walkway		112d	24-Oct-15	09-Mar-16	43d	28-Dec-16 A	12-Apr-17		-67d	-324d							
416	Steel Roof and Covered Walkway		112d	24-Oct-15	09-Mar-16	43d	28-Dec-16 A	12-Apr-17		-67d	-324d							
417	CC102225	Fabricate & Deliver Roof & Covered Walkway Structural Steelwork	77d	24-Oct-15	25-Jan-16	0d	28-Dec-16 A	17-Feb-17 A	100%		-314d							
418	CC102230	Erect Roof Steelwork	6d	03-Mar-16	09-Mar-16	24d	21-Feb-17	20-Mar-17	0%	-126d	-305d							
419	CC102235	Fabricate and Install Pipe Support	0d			25d	07-Mar-17	05-Apr-17	0%	-61d								
420	CC102290	Erect Covered Walkway	0d			19d	21-Mar-17	12-Apr-17	0%	-67d								
421	Composting Building & Facilities - Zone #2		113d	05-Jan-16	25-May-16	64d	13-Jul-16 A	10-May-17		-65d	-283d							
422	Composting Building #2 (Zone #2.1)		111d	05-Jan-16	23-May-16	64d	13-Jul-16 A	10-May-17		-65d	-285d							
423	General		111d	05-Jan-16	23-May-16	64d	13-Jul-16 A	10-May-17		-65d	-285d							
424	CC103312	Erect Cladding for Building #2 Covered Walkway	0d			19d	12-Nov-16 A	11-Mar-17	75%		-38d							
425	CC103319	Erect Cladding for Building #2 Steel Roof	0d			0d	22-Dec-16 A	24-Jan-17 A	100%									
426	CC103360	Internal Finishing Works	39d	10-Mar-16	28-Apr-16	25d	22-Jul-16 A	18-Mar-17	88.29%	-125d	-265d							
427	CC103400	External Finishing Works	43d	24-Mar-16	19-May-16	31d	26-Sep-16 A	25-Mar-17	82%	-32d	-255d							
428	CC103420	ABWF Work	40d	05-Jan-16	23-Feb-16	0d	13-Jul-16 A	09-Feb-17 A	100%		-285d							
429	CC103440	Remaining ABWF Work	71d	24-Feb-16	23-May-16	64d	10-Feb-17 A	10-May-17	9.86%	-65d	-285d							
430	Handover of Works to E&M		0d	23-May-16	23-May-16	0d	09-Feb-17 A	18-Mar-17		-125d	-246d							
431	CC100820	Handover to E&M Works (Zone #2.1.9 - Dewatering Area - 1/F)	0d			0d		09-Feb-17 A	100%									
432	CC103460	Handover to E&M Works (Zone #2.1.10 - Building 2 Other Remaining Area)	0d		23-May-16	0d		18-Mar-17*	0%	-125d	-246d							
433	Link Bridge (Zone #2.2)		36d	12-Apr-16	25-May-16	25d	06-Feb-17 A	21-Apr-17		-120d	-269d							
434	General		36d	12-Apr-16	25-May-16	25d	06-Feb-17 A	21-Apr-17		-120d	-269d							
435	CC104160	ABWF Works at Link Bridge	36d	12-Apr-16	25-May-16	25d	06-Feb-17 A	21-Apr-17	30.56%	-120d	-269d							
436	Handover of Works to E&M		0d	25-May-16	25-May-16	0d	21-Apr-17	21-Apr-17		-120d	-269d							
437	CC104180	Handover to E&M Works at Link Bridge (Zone #2.2 - Link Bridge)	0d		25-May-16	0d		21-Apr-17	0%	-120d	-269d							
438	Auxiliary Buildings & Facilities (Zone #3)		330d	02-Sep-15	13-Oct-16	148d	13-Nov-15 A	18-Aug-17		-95d	-251d							
439	Energy Centre (Building #3/Zone #3.1)		16d	15-Feb-16	03-Mar-16	61d	30-Aug-16 A	06-May-17		-123d	-345d							
440	General		16d	15-Feb-16	03-Mar-16	61d	30-Aug-16 A	06-May-17		-123d	-345d							
441	CC105320	ABWF Works	16d	15-Feb-16	03-Mar-16	31d	30-Aug-16 A	25-Mar-17	68%	-130d	-315d							
442	cc105325	External Wall Finishes	0d			45d	09-Mar-17	06-May-17	0%	-123d								
443	Handover of Works to E&M		0d	03-Mar-16	03-Mar-16	33d	24-Feb-17	05-Apr-17		-123d	-323d							
444	CC105334	Handover to E&M Works (Bldg #3/Zone #3.1.3 - Energy Centre Roof)	0d			0d		28-Feb-17	0%	-99d								
445	CC105335	Handover to E&M Works (Bldg #3 - Energy Centre 3nos. MCC Rooms and Lower Roof)	0d			0d		24-Feb-17	0%	-101d								
446	CC105336	Handover to E&M Works (Bldg #3/Zone #3.1.4 - Energy Centre G/F other areas)	0d			0d		28-Feb-17	0%	-130d								
447	CC105340	Handover to E&M Works (Bldg #3/Zone #3.1.5 - Energy Centre Other Remaining Area)	0d		03-Mar-16	0d		05-Apr-17	0%	-123d	-323d							
448	Anaerobic Digestion Tanks (Zone #3.2)		18d	19-Feb-16	10-Mar-16	30d	05-Sep-16 A	24-Mar-17		-31d	-308d							
449	General		18d	19-Feb-16	10-Mar-16	30d	05-Sep-16 A	24-Mar-17		-31d	-308d							
450	CC106320	ABWF for Pump Buildings	18d	19-Feb-16	10-Mar-16	30d	05-Sep-16 A	24-Mar-17	80%	-31d	-308d							
451	CAPCS Stack (inside Building 1)		245d	26-Nov-15	23-Sep-16	42d	13-Apr-17	07-Jun-17		-132d	-205d							
452	General		245d	26-Nov-15	23-Sep-16	42d	13-Apr-17	07-Jun-17		-132d	-205d							
453	CC108220	Erect structural steel support for CAPCS duct (Refer to Building 1)	18d	26-Nov-15	16-Dec-15	18d	13-Apr-17	09-May-17	0%	-132d	-408d							
454	CC108260	ABWF Work	24d	26-Aug-16	23-Sep-16	24d	10-May-17	07-Jun-17	0%	-132d	-205d							
455	Handover of Works to E&M		0d	16-Dec-15	16-Dec-15	0d	12-May-17	12-May-17		-132d	-411d							
456	CC108240	Handover to E&M Works (Zone #3.4 - CAPCS Stack)	0d		16-Dec-15	0d		12-May-17	0%	-132d	-411d							
457	Biogas Cleaning & Storage Tank (Zone #3.5)		70d	30-Oct-15	22-Jan-16	39d	27-Jun-16 A	05-Apr-17		-130d	-355d							
458	Biogas Holder / Biogas Plant		70d	30-Oct-15	22-Jan-16	39d	27-Jun-16 A	05-Apr-17		-142d	-355d							
459	CC109220	Raft Foundations	6d	30-Oct-15	05-Nov-15	25d	27-Jun-16 A	18-Mar-17	95%	-136d	-405d							
460	CC109280	Clearance	4d	18-Dec-15	22-Dec-15	19d	12-Sep-16 A	25-Mar-17	80%	-136d	-371d							
461	CC109300	ABWF Works	24d	23-Dec-15	22-Jan-16	39d	19-Sep-16 A	05-Apr-17	80%	-142d	-355d							
462	Handover of Works to E&M		0d	22-Jan-16	22-Jan-16	0d	05-Apr-17	05-Apr-17		-130d	-355d							
463	CC109380	Handover to E&M Works (Zone #3.5.1 - Biogas Cleaning & Storage Tank)	0d		22-Jan-16	0d		05-Apr-17	0%	-130d	-355d							
464	CC109400	Handover to E&M Works (Zone #3.5.3 - Biogas Dehumidifier)	0d			0d		05-Apr-17	0%	-142d								
465	Weighbridge (Zone #3.6)		85d	15-Dec-15	01-Apr-16	70d	13-Dec-16 A	17-May-17		-74d	-332d							
466	General		85d	15-Dec-15	01-Apr-16	70d	13-Dec-16 A	17-May-17		-74d	-332d							
467	CC110140	Wall, Floor Slab and Stair	15d	15-Dec-15	04-Jan-16	12d	13-Dec-16 A	03-Mar-17	78%	-117d	-344d							

#	Activity ID	Activity Name	BL Project Duration	BL Project Start	BL Project Finish	Remaining Duration	Start	Finish	Activity % Complete	Total Float	Variance - BL Project	2017				
												Feb	Mar	Apr	May	
468	CC110160	Wall and Roof Slab	15d	05-Jan-16	21-Jan-16	10d	04-Mar-17	15-Mar-17	0%	-117d	-339d					
469	CC110180	Parapet	6d	22-Jan-16	28-Jan-16	6d	16-Mar-17	22-Mar-17	0%	-117d	-339d					
470	CC110200	Backfill and Formation	6d	29-Jan-16	04-Feb-16	6d	23-Mar-17	29-Mar-17	0%	-117d	-339d					
471	CC110220	Concrete Structure for Weighbridge	17d	05-Feb-16	27-Feb-16	1d	06-Feb-17 A	18-Feb-17	94.12%	-104d	-289d					
472	CC110240	ABWF Work	26d	29-Feb-16	01-Apr-16	30d	07-Apr-17	17-May-17	0%	-74d	-332d					
473	Handover of Works to E&M			0d	01-Apr-16	01-Apr-16	36d	29-Mar-17	17-May-17	-74d	-332d					
474	CC110260	Handover to E&M Works (Zone #3.6.2 - Weighbridge)	0d		01-Apr-16	0d		29-Mar-17	0%	-117d	-296d					
475	CC110280	Handover to E&M Works (Zone #3.6.1 - Weighbridge Control Room)	0d			0d		17-May-17	0%	-74d						
476	Miscellaneous Works (Zone #4)			330d	02-Sep-15	13-Oct-16	148d	13-Nov-15 A	18-Aug-17	-95d	-251d					
477	3m High Boundary Wall (Type 2)			0d			12d	06-May-17	19-May-17	-19d						
478	CC111170	Remaining Boundary Wall (after Slopework)	0d			12d	06-May-17	19-May-17	0%	-19d						
479	Summary			268d	02-Sep-15	29-Jul-16	148d	13-Nov-15 A	18-Aug-17	-95d	-313d					
480	CC111220	Boundary Fence (Summary)	48d	02-Jun-16	29-Jul-16	148d	10-Jun-16 A	18-Aug-17	20.21%	-95d	-313d					
481	CC111280	Sitewide Drainage (Summary)	146d	17-Sep-15	15-Mar-16	34d	13-Nov-15 A	29-Mar-17	71.6%	-106d	-308d					
482	CC111300	Sitewide Sewage (Summary)	149d	02-Sep-15	03-Mar-16	34d	13-Nov-15 A	29-Mar-17	63%	-106d	-318d					
483	CC111320	Sitewide Pipe Ducts, Trenches, Drawpits and Utilities (Summary)	142d	05-Dec-15	01-Jun-16	140d	10-Aug-16 A	09-Aug-17	49.4%	-137d	-353d					
484	Location Near Building 2 (Part 1)			0d			65d	13-Nov-15 A	11-May-17	-54d						
485	CC113100	Boundary Fence - Type1, 2 & 3 (Part 1)	0d			41d	18-Nov-16 A	07-Apr-17	65%	-30d						
486	CC113150	Excavate for Drainage and Sewage (Part 1)	0d			18d	13-Nov-15 A	10-Mar-17	90%	-143d						
487	CC113200	Install Pipes and Construct Manholes for Drainage and Sewage (Part 1)	0d			21d	05-Dec-15 A	17-Mar-17	86.1%	-143d						
488	CC113250	Testing of Drainage and Sewage (Part 1)	0d			22d	05-Apr-16 A	21-Mar-17	80%	-143d						
489	CC113300	Backfilling of Drainage and Sewage (Part 1)	0d			30d	11-Apr-16 A	24-Mar-17	80%	-143d						
490	CC113350	Complete M/H STM-1 & Connect to Existing 500mm Trapezoidal Channel	0d			0d	07-Dec-16 A	20-Jan-17 A	100%							
491	CC113500	Sitewide Pipe Ducts, Trenches & Drawpits (Part 1)	0d			5d	10-Aug-16 A	30-Mar-17	85%	-143d						
492	CC113510	Remaining Pipe Ducts, Drawpits, Drainage, Water Supply Pipes and FS Pipe (Part 1)	0d			30d	31-Mar-17*	11-May-17	0%	-143d						
493	Location Near Building 1 Fence Wall (Part 2)			0d			64d	20-Apr-16 A	10-May-17	-142d						
494	CC114150	Excavate for Drainage and Sewage (Part 2)	0d			19d	20-Apr-16 A	11-Mar-17	82%	-133d						
495	CC114200	Install Pipes and Construct Manholes for Drainage and Sewage (Part 2)	0d			31d	25-Apr-16 A	25-Mar-17	78%	-142d						
496	CC114250	Testing of Drainage and Sewage (Part 2)	0d			28d	18-Jul-16 A	29-Mar-17	66%	-142d						
497	CC114300	Backfilling of Drainage and Sewage (Part 2)	0d			32d	05-Sep-16 A	01-Apr-17	60%	-142d						
498	CC114350	Sitewide Pipe Ducts, Trenches & Drawpits (Part 2)	0d			32d	26-Sep-16 A	06-Apr-17	58%	-142d						
499	CC114355	Remaining Pipe Ducts, Drawpits, Drainage, Water Supply Pipes and FS Pipe (Part 2)	0d			24d	07-Apr-17	10-May-17	0%	-142d						
500	Location between Building 1 & AD Farm (Part 3)			0d			61d	16-Aug-16 A	06-May-17	-133d						
501	CC115100	Excavate for Drainage and Sewage (Part 3)	0d			0d	16-Aug-16 A	20-Jan-17 A	100%							
502	CC115150	Install Pipes and Construct Manholes for Drainage and Sewage (Part 3)	0d			22d	18-Aug-16 A	15-Mar-17	75%	-103d						
503	CC115200	Testing of Drainage and Sewage (Part 3)	0d			28d	05-Sep-16 A	22-Mar-17	70%	-103d						
504	CC115250	Backfilling of Drainage and Sewage (Part 3)	0d			31d	11-Jan-17 A	25-Mar-17	45%	-103d						
505	CC115300	Sitewide Pipe Ducts, Trenches & Drawpits (Part 3)	0d			36d	10-Dec-16 A	31-Mar-17	52%	-145d						
506	CC115310	Remaining Pipe Ducts, Drawpits, Drainage, Water Supply Pipes and FS Pipe (Part 3)	0d			25d	01-Apr-17	06-May-17	0%	-139d						
507	Location between Building 1 & Building 3 (Part 4)			43d	16-Mar-16	10-May-16	95d	15-Apr-16 A	16-Jun-17	-92d	-326d					
508	CC111240	Gate House	43d	16-Mar-16	10-May-16	24d	16-Mar-17	13-Apr-17	0%	-130d	-277d					
509	CC111260	Handover of Zone #3.7 - Gate House for E&M Works	0d		10-May-16	0d		13-Apr-17	0%	-55d	-277d					
510	CC116100	Boundary Fence - Type 1 & 4 (Part 4)	0d			95d	10-Jun-16 A	16-Jun-17	62%	-92d						
511	CC116150	Excavate for Drainage and Sewage (Part 4)	0d			0d	15-Apr-16 A	20-Jan-17 A	100%							
512	CC116200	Install Pipes and Construct Manholes for Drainage and Sewage (Part 4)	0d			25d	05-May-16 A	18-Mar-17	83%	-130d						
513	CC116210	Complete M/H STM-2 & Connect to Existing 3m Trapezoidal Channel	0d			0d	12-Aug-16 A	27-Jan-17 A	100%							
514	CC116300	Testing of Drainage and Sewage (Part 4)	0d			28d	16-May-16 A	25-Mar-17	85%	-130d						
515	CC116350	Backfilling of Drainage and Sewage (Part 4)	0d			20d	20-Jun-16 A	29-Mar-17	75%	-130d						
516	CC116400	Sitewide Pipe Ducts, Trenches & Drawpits (Part 4)	0d			36d	25-Jul-16 A	31-Mar-17	78%	-145d						
517	CC116410	Remaining Pipe Ducts, Drawpits, Drainage, Water Supply Pipes and FS Pipe (Part 4)	0d			25d	05-Apr-17	09-May-17	0%	-141d						
518	CC116500	Water Meter Cabinet Construction	0d			18d	11-Mar-17	31-Mar-17	0%	-135d						
519	Location at Natural Terrain (Sbpeworks)			77d	13-Jul-16	13-Oct-16	60d	23-Dec-16 A	05-May-17	-49d	-163d					
520	CC111360	NTH Mitigation works	77d	13-Jul-16	13-Oct-16	60d	23-Dec-16 A	05-May-17	22.08%	-49d	-163d					
521	Sitewide: Miscellaneous Structures			0d			70d	16-Jan-17 A	17-May-17	-144d						

#	Activity ID	Activity Name	BL Project Duration	BL Project Start	BL Project Finish	Remaining Duration	Start	Finish	Activity % Complete	Total Float	Variance - BL Project	2017						
												Jan	Feb	Mar	Apr	May		
522	CC117100	Pre-Excavation of Collection Chamber 1 (along grid 10-11) for large boulders underground	0d			0d	16-Jan-17 A	23-Jan-17 A	100%									
523	CC117105	Sheet Pile, ELS System and Excavation of Collection Chamber 1	0d			22d	24-Jan-17 A	15-Mar-17	45%	-144d								
524	CC117110	Construction of Collection Chamber 1	0d			18d	16-Mar-17	06-Apr-17	0%	-144d								
525	CC117112	Sheet Pile and ELS for Associated Pipeworks for Collection Chamber 1 to F3.05, F6.04 & F8.01, S1.06 to S1.07, DE045 to 46	0d			12d	07-Apr-17	24-Apr-17	0%	-144d								
526	CC117114	Construction of Associated Pipeworks for Collection Chamber 1 to F3.05, F6.04 & F8.01, S1.06 to S1.07, DE045 to 46	0d			18d	25-Apr-17	17-May-17	0%	-144d								
527	CC117120	Prim. Sedimentation Tank & Int. Pump Sump	0d			48d	08-Mar-17	09-May-17	0%	-137d								
528	CC117140	Construction of PC Pump and Conical Tank Concrete Footings	0d			37d	29-Mar-17	17-May-17	0%	-144d								
529	Roadworks at Portion 2			102d	07-Jun-16	07-Oct-16	0d	04-Jul-16 A	18-Jan-17 A		-84d							
530	CC111435	Portion 2 Works - Temp. Traffic Management (in Stages) - Summary	0d			0d	04-Jul-16 A	18-Jan-17 A	100%									
531	CC111460	Road Construction - Summary	102d	07-Jun-16	07-Oct-16	0d	25-Aug-16 A	18-Jan-17 A	100%		-84d							
532	CC111560	Construct of New Concrete Footpath Pavement and Reinstatement of Verge	0d			0d	10-Dec-16 A	18-Jan-17 A	100%									
533	CC111580	Bitument Pavement Reconstruction	0d			0d	10-Dec-16 A	18-Jan-17 A	100%									
534	STATUTORY AND UTILITIES WORKS			147d	08-Apr-16	03-Oct-16	70d	20-Oct-16 A	29-Jun-17		-42d	-217d						
535	Electricity Supply and Energization - CLP			91d	08-Apr-16	27-Jul-16	22d	02-Nov-16 A	12-Jun-17		-60d	-258d						
536			91d	08-Apr-16	27-Jul-16	22d	02-Nov-16 A	12-Jun-17		-60d	-258d							
537			91d	08-Apr-16	27-Jul-16	22d	02-Nov-16 A	12-Jun-17		-60d	-258d							
538	SW250160	CLP to install HV Switch Boards	90d	22-Apr-16	20-Jul-16	0d	02-Nov-16 A	14-Feb-17 A	100%		-170d							
539	SW250200	CLP to install HV cables	26d	08-Apr-16	09-May-16	0d	10-Jan-17 A	14-Feb-17 A	100%		-229d							
540	SW250220	Submit WR1 to CLP and CLP inspection	6d	10-May-16	17-May-16	0d	08-Feb-17 A	15-Feb-17 A	100%		-224d							
541	SW250240	CLP install energy meter and energize power	6d	21-Jul-16	27-Jul-16	0d	08-Feb-17 A	15-Feb-17 A	100%		-165d							
542	SW250260	CLP install Phasor Measurement Units (PMU)	0d			22d	17-May-17	12-Jun-17	0%	-60d								
543	Plumbing - WSD			26d	30-Jun-16	01-Aug-16	47d	01-Apr-17	02-Jun-17		-143d	-246d						
544			26d	30-Jun-16	01-Aug-16	47d	01-Apr-17	02-Jun-17		-143d	-246d							
545			26d	30-Jun-16	01-Aug-16	47d	01-Apr-17	02-Jun-17		-143d	-246d							
546	SW251990	WSD Connection to Water Meter Cabinet	0d			24d	01-Apr-17	24-Apr-17	0%	-164d								
547	SW252100	Submit Form WW046 Part IV - Request for Inspection (Fresh Water Supply)	0d		30-Jun-16	0d		11-May-17	0%	-119d	-212d							
548	SW252120	WSD inspection and reinspection (Fresh Water Supply)	21d	04-Jul-16	01-Aug-16	15d	12-May-17	02-Jun-17	0%	-119d	-206d							
549	Drainage - DSD			0d			60d	01-May-17	29-Jun-17		-56d							
550			0d			60d	01-May-17	29-Jun-17		-56d								
551			0d			60d	01-May-17	29-Jun-17		-56d								
552	SW254100	Connection by DSD to Terminal Foulwater MH	0d			60d	01-May-17	29-Jun-17	0%	-56d								
553	Telecommunication			48d	02-Jun-16	10-Aug-16	33d	10-May-17	26-Jun-17		-32d	-215d						
554			48d	02-Jun-16	10-Aug-16	33d	10-May-17	26-Jun-17		-32d	-215d							
555			48d	02-Jun-16	10-Aug-16	33d	10-May-17	26-Jun-17		-32d	-215d							
556	SW253100	Handover plant room and cable duct to Telecom Company	5d	02-Jun-16	08-Jun-16	5d	10-May-17*	16-May-17	0%	-32d	-230d							
557	SW253120	Telecom. Company to install cable and Equipment	43d	10-Jun-16	10-Aug-16	28d	17-May-17	26-Jun-17	0%	-32d	-215d							
558	Others			76d	16-Jun-16	03-Oct-16	21d	20-Oct-16 A	15-May-17		-36d	-149d						
559			76d	16-Jun-16	03-Oct-16	21d	20-Oct-16 A	15-May-17		-36d	-149d							
560			76d	16-Jun-16	03-Oct-16	21d	20-Oct-16 A	15-May-17		-36d	-149d							
561	SW260100	Registration of Pressure Vessels (Compressed Air / ASP)	20d	05-Sep-16	03-Oct-16	16d	20-Oct-16 A	15-May-17	20%	-108d	-149d							
562	SW260162	Chemical Waste Producer Registration (Plant)	20d	16-Jun-16	14-Jul-16	20d	11-Apr-17	12-May-17	0%	-35d	-204d							
563	METHOD STATEMENT (M.S.) OF E & M INSTALLATION WORKS (INCL. RE-SU)			0d			77d	13-May-16 A	05-May-17		240d							
564	Electrical & Control Systems			0d			67d	08-Jul-16 A	25-Apr-17		250d							
565			0d			67d	08-Jul-16 A	25-Apr-17		250d								
566			0d			67d	08-Jul-16 A	25-Apr-17		250d								
567	MS601500	IC Certifies M.S. for Installation of LV Switchboard and MCC	0d			26d	15-Dec-16 A	15-Mar-17	55%	-145d								
568	MS602100	IC Certifies M.S. for Installation of Emergency Genset	0d			26d	08-Jul-16 A	15-Mar-17	78%	291d								
569	MS602700	IC Certifies M.S. for Installation of Cable	0d			26d	27-Aug-16 A	15-Mar-17	82%	-176d								
570	MS603200	Submit M.S. for Installation of Control system (SCADA Panel/LCP)	0d			0d		06-Mar-17*	0%	-157d								
571	MS603300	IC Certifies M.S. for Installation of Control system (SCADA Panel/LCP)	0d			46d	07-Mar-17	21-Apr-17	0%	-157d								
572	MS603600	IC Certifies M.S. for Installation of ELV System	0d			42d	07-Jan-17 A	31-Mar-17	46%	-166d								
573	MS603900	IC Certifies M.S. for Termination of Fiber Optic Cable	0d			26d	07-Sep-16 A	15-Mar-17	78%	-150d								
574	MS604700	Submit M.S. for T&C of Above Ground Earthing System	0d			0d		10-Mar-17*	0%	-159d								
575	MS604800	IC Certifies M.S. for T&C of Above Ground Earthing System	0d			46d	11-Mar-17	25-Apr-17	0%	-159d								
576	MS619200	Submit M.S. for Installation of Instrument	0d			0d		10-Mar-17*	0%	-151d								
577	MS619300	IC Certifies M.S. for Installation of Instrument	0d			46d	11-Mar-17	25-Apr-17	0%	-151d								
578	Mechanical and Piping			0d			58d	08-Nov-16 A	16-Apr-17		-141d							
579			0d			58d	08-Nov-16 A	16-Apr-17		-141d								

#	Activity ID	Activity Name	BL Project Duration	BL Project Start	BL Project Finish	Remaining Duration	Start	Finish	Activity % Complete	Total Float	Variance - BL Project	2017				
												Feb	Mar	Apr	May	
580			0d			58d	08-Nov-16 A	16-Apr-17	0%	-141d						
581	MS612000	Submit M.S. for Installation of Weighbridge	0d			0d		09-Mar-17*	0%	-143d						
582	MS612100	IC Certifies M.S. for Installation of Weighbridge	0d			20d	10-Mar-17	29-Mar-17	0%	-143d						
583	MS612400	IC Certifies M.S. for Installation of Vehicle Washing System	0d			0d	10-Jan-17 A	06-Feb-17 A	100%							
584	MS612800	IC Certifies M.S. for Installation of Pipe Racks and Supports	0d			21d	12-Jan-17 A	10-Mar-17	25%	-166d						
585	MS612802	Submit M.S. for Installation of Pipe Bridge	0d			0d		10-Mar-17*	0%	-170d						
586	MS612804	IC Certifies M.S. for Installation of Pipe Bridge	0d			20d	11-Mar-17	30-Mar-17	0%	-170d						
587	MS616500	Submit M.S. for Installation of Mechanical Support and Structure	0d			0d		10-Mar-17*	0%	-150d						
588	MS616600	IC Certifies M.S. for Installation of Mechanical Support and Structure	0d			30d	11-Mar-17	09-Apr-17	0%	-150d						
589	MS618120	IC Certifies M.S. for Installation of Electric Heater	0d			24d	16-Nov-16 A	13-Mar-17	67%	-132d						
590	MS618520	Submit M.S. for Installation of CHP & ASP Stack	0d			0d		09-Mar-17*	0%	-135d						
591	MS618540	IC Certifies M.S. for Installation of CHP & ASP Stack	0d			15d	10-Mar-17	24-Mar-17	0%	-135d						
592	MS619600	IC Certifies M.S. for Installation of GRP Tank	0d			0d	08-Nov-16 A	19-Jan-17 A	100%							
593	MS619610	Submit M.S. for Installation of Biogas Storage Tank	0d			0d		06-Mar-17*	0%	-120d						
594	MS619620	IC Certifies M.S. for Installation of Biogas Storage Tank	0d			20d	07-Mar-17	26-Mar-17	0%	-120d						
595	MS619800	Submit M.S. for Labeling of Equipment, Valve and Instrument	0d			0d		17-Mar-17*	0%	-156d						
596	MS619900	IC Certifies M.S. for Labeling of Equipment, Valve and Instrument	0d			30d	18-Mar-17	16-Apr-17	0%	-156d						
597	Building Services		0d			77d	13-May-16 A	05-May-17		-140d						
598			0d			77d	13-May-16 A	05-May-17		-140d						
599			0d			77d	13-May-16 A	05-May-17		-140d						
600	MS525400	Submit M.S. for Installation of MVAC System	0d			0d		06-Mar-17*	0%	-131d						
601	MS525500	IC Certifies M.S. for Installation of MVAC System	0d			46d	07-Mar-17	21-Apr-17	0%	-131d						
602	MS526400	IC Certifies M.S. for Installation of Firemen Lift	0d			31d	13-May-16 A	20-Mar-17	72%	-100d						
603	MS526500	Submit M.S. for Installation of Lifting Platform	0d			0d		20-Mar-17*	0%	-140d						
604	MS526600	IC Certifies M.S. for Installation of Lifting Platform	0d			46d	21-Mar-17	05-May-17	0%	-140d						
605	E & M INSTALLATION WORKS		285d	15-Dec-15	30-Nov-16	138d	31-Aug-15 A	07-Aug-17		120d	-200d					
606	Waste Receiving, Storage and Feeding System		120d	04-Feb-16	05-Jul-16	130d	28-Feb-17	07-Aug-17		-131d	-324d					
607			120d	04-Feb-16	05-Jul-16	130d	28-Feb-17	07-Aug-17		-131d	-324d					
608			120d	04-Feb-16	05-Jul-16	130d	28-Feb-17	07-Aug-17		-131d	-324d					
609	EM180100	Installation of Weighbridge System 1	32d	02-Apr-16	11-May-16	32d	30-Mar-17	12-May-17	0%	-117d	-296d					
610	EM180150	Installation of Weighbridge System 2	32d	12-May-16	20-Jun-16	32d	30-Mar-17	12-May-17	0%	-117d	-264d					
611	EM180250	Waste Receiving System Cable Tray Laying Works	18d	12-May-16	02-Jun-16	90d	06-Apr-17*	27-Jul-17	0%	-131d	-341d					
612	EM180260	Waste Receiving System Local Control Panel / Switch	0d			75d	27-Apr-17	27-Jul-17	0%	-131d						
613	EM180300	Waste Receiving System Cabling Works	26d	03-Jun-16	05-Jul-16	75d	10-May-17	07-Aug-17	0%	-131d	-324d					
614	EM190100	Vehicle Washing System	50d	04-Feb-16	09-Apr-16	70d	02-Mar-17	29-May-17	0%	-141d	-336d					
615	EM190110	Bin Handling Machine	0d			60d	28-Feb-17	15-May-17	0%	-134d						
616	EM190120	High Jet Water Spray Gun System	0d			18d	22-Apr-17	15-May-17	0%	-129d						
617	EM190170	Waste Receiving System Pipework (with Supports)	0d			65d	07-Mar-17	27-May-17	0%	-140d						
618	EM190180	Waste Receiving System Instrumentation and Control	0d			55d	18-Mar-17	27-May-17	0%	-140d						
619	Pre-Treatment System		155d	04-Feb-16	15-Aug-16	87d	14-Nov-16 A	07-Jun-17		-61d	-238d					
620	Pre-Treatment System		155d	04-Feb-16	15-Aug-16	87d	14-Nov-16 A	07-Jun-17		-61d	-238d					
621			155d	04-Feb-16	15-Aug-16	87d	14-Nov-16 A	07-Jun-17		-61d	-238d					
622	EM100150	Installation of Reception Hopper 1 and Screw Conveyors 1	18d	18-Apr-16	09-May-16	29d	18-Nov-16 A	23-Mar-17	90%	-119d	-261d					
623	EM100250	Installation of Reception Hopper 2 and Screw Conveyors 2	12d	10-May-16	24-May-16	28d	14-Nov-16 A	22-Mar-17	90%	-107d	-248d					
624	EM100301	Installation of Piston Pump No.1	0d			29d	24-Nov-16 A	27-Mar-17	80%	-146d						
625	EM100302	Installation of Piston Pump No.2	0d			32d	24-Nov-16 A	27-Mar-17	80%	-6d						
626	EM100350	Installation of Central Sump Pump	18d	16-Jun-16	07-Jul-16	18d	01-Apr-17*	26-Apr-17	0%	-115d	-238d					
627	EM100351	Installation of Lobe Pump	0d			8d	31-Mar-17	10-Apr-17	0%	-28d						
628	EM100352	Installation of Macerators	0d			7d	01-Apr-17*	10-Apr-17	0%	-28d						
629	EM100353	Installation of Int. Suspension Buffer Tank Jet Mixer	0d			7d	01-Apr-17*	10-Apr-17	0%	-28d						
630	EM100354	Installation of Bollfilter	0d			7d	01-Apr-17*	10-Apr-17	0%	-28d						
631	EM100356	Installation of Centrifuge Pumps	0d			6d	03-Apr-17	10-Apr-17	0%	-17d						
632	EM100358	Installation of Vertical Mixer	0d			18d	01-Apr-17*	26-Apr-17	0%	-28d						
633	EM100362	Installation of Platform (Pre-treatment)	0d			24d	28-Apr-17*	27-May-17	0%	-141d						
634	EM100364	Installation of Control Panels (Pre-treatment)	0d			49d	28-Feb-17	29-Apr-17	0%	-31d						

#	Activity ID	Activity Name	BL Project Duration	BL Project Start	BL Project Finish	Remaining Duration	Start	Finish	Activity % Complete	Total Float	Variance - BL Project	2017				
												Feb	Mar	Apr	May	
635	EM100600	Installation of Heavy/ Light Fraction Screw No 1	12d	18-May-16	31-May-16	7d	27-Feb-17*	06-Mar-17	0%	-130d	-228d					
636	EM100650	Installation of Heavy/ Light Fraction Screw No 2	12d	01-Jun-16	15-Jun-16	7d	27-Feb-17	06-Mar-17	0%	-116d	-216d					
637	EM100660	Installation of Belt Conveyor	0d			14d	20-Mar-17	05-Apr-17	0%	-141d						
638	EM100670	Installation of Metal Separator No.1	0d			14d	20-Mar-17	05-Apr-17	0%	-141d						
639	EM100680	Installation of Metal Separator No.2	0d			14d	20-Mar-17	05-Apr-17	0%	-141d						
640	EM100700	Installation of Overhead Travelling Crane	18d	18-Apr-16	09-May-16	28d	06-Mar-17*	07-Apr-17	0%	-34d	-273d					
641	EM100720	Installation of Monorail (Crusher Area)	0d			8d	01-Apr-17*	11-Apr-17	0%	-18d						
642	EM100780	Pre-treatment System Pipework (with Supports and Racks)	0d			27d	16-Mar-17*	20-Apr-17	0%	-111d						
643	EM100781	Pre-treatment System Instrumentation and Control	0d			14d	31-Mar-17	20-Apr-17	0%	-111d						
644	EM100782	Installation of Skip Rail Guide	0d			35d	27-Feb-17*	08-Apr-17	0%	-104d						
645	EM100800	Pre-treatment System Cable Tray Laying Work	92d	04-Feb-16	31-May-16	50d	18-Feb-17	21-Apr-17	0%	-131d	-264d					
646	EM100810	Pre-treatment System Local Control Panel / Switch	0d			25d	20-Mar-17	21-Apr-17	0%	-131d						
647	EM100850	Pre-treatment System Cabling Works	100d	16-Mar-16	19-Jul-16	50d	20-Mar-17	23-May-17	0%	-131d	-249d					
648	EM10095B	Remaining Pre-treatment System Cabling and Building Services Works on 1/F	75d	18-May-16	15-Aug-16	51d	01-Apr-17	07-Jun-17	0%	-61d	-238d					
649	Installation of Control Panels			41d	18-Apr-16	06-Jun-16	23d	10-Mar-17	06-Apr-17	0%	-104d	-249d				
650	Installation of Control Panels			41d	18-Apr-16	06-Jun-16	23d	10-Mar-17	06-Apr-17	0%	-104d	-249d				
651	EM101040	Installation of MCC Panels at Pre-treatment MCC Room	0d			18d	10-Mar-17	30-Mar-17	0%	-104d						
652	EM101050	Installation of Control and Package Panels at Pre-treatment MCC Room	41d	18-Apr-16	06-Jun-16	23d	10-Mar-17	06-Apr-17	0%	-104d	-249d					
653	Anaerobic Digestion Treatment System			139d	29-Mar-16	12-Sep-16	85d	28-Nov-16 A	05-Jun-17	0%	-63d	-212d				
654	Anaerobic Digestion Treatment System			133d	06-Apr-16	12-Sep-16	85d	28-Nov-16 A	05-Jun-17	0%	-82d	-212d				
655	Anaerobic Digestion Treatment System			133d	06-Apr-16	12-Sep-16	85d	28-Nov-16 A	05-Jun-17	0%	-82d	-212d				
656	EM100760	Installation of Suspension buffer tank Insulation & Cladding	0d			0d	29-Dec-16 A	27-Jan-17 A	100%							
657	EM100765	Drain all the water out of Suspension buffer tank	0d			10d	09-Mar-17	20-Mar-17	0%	-108d						
658	EM110120	Drain water out from Tank No.1	0d			16d	25-Jan-17 A	08-Mar-17	46%	-143d						
659	EM110130	Erect scaffolding and piping and nozzle inside Tank 1	0d			9d	09-Mar-17*	18-Mar-17	0%	-143d						
660	EM110140	Inspection on Tank 1 and Tank 2	0d			5d	20-Mar-17*	24-Mar-17	0%	-143d						
661	EM110162	Drain all the water out of AD Tank 2	0d			8d	26-Jan-17 A	25-Feb-17	46%	-151d						
662	EM110163	Erect scaffolding and piping and nozzle inside Tank 2	0d			11d	27-Feb-17	10-Mar-17	0%	-122d						
663	EM110165	Transfer water from AD3 to AD 2, AD 2 redo water test	0d			17d	31-Mar-17	24-Apr-17	0%	-143d						
664	EM110205	Installation of Digester Tank No.3 Insulation & Cladding	0d			16d	18-Jan-17 A	08-Mar-17	51%	-102d						
665	EM110206	Erect scaffolding and piping and nozzle inside Tank 3	0d			7d	09-May-17*	16-May-17	0%	-143d						
666	EM110208	Transfer water from AD 2 to AD 3 for T&C	0d			16d	17-May-17*	05-Jun-17	0%	-140d						
667	EM110300	Installation of Pumping and Jet Mixing System	18d	03-Aug-16	23-Aug-16	19d	16-Dec-16 A	16-May-17	18%	-143d	-213d					
668	EM110310	Installation of Heat Exchangers	0d			20d	02-Mar-17*	24-Mar-17	0%	-95d						
669	EM110320	Installation of Overflow Tanks	0d			32d	18-Mar-17*	28-Apr-17	0%	-132d						
670	EM110330	Installation of Pressure Relief Valves	0d			42d	02-Mar-17*	24-Apr-17	0%	-128d						
671	EM110350	Installation of Odour Extraction Ductworks	39d	29-Jul-16	12-Sep-16	39d	02-Mar-17	20-Apr-17	0%	-46d	-176d					
672	EM110400	Installation of Intermediate Digestate Tank	12d	24-Aug-16	06-Sep-16	12d	30-Mar-17	13-Apr-17	0%	-101d	-178d					
673	EM110402	Civil Modification Work of Racks and Supports (AD Area - Pipe Rack 1)	0d			0d	28-Nov-16 A	21-Jan-17 A	100%							
674	EM110402A	Installation of Racks and Supports (AD Area - Pipe Rack 1 Modules 1,2,4,1.4,2.5,1.5,2,6,7)	0d			9d	10-Jan-17 A	15-Mar-17	74.29%	-133d						
675	EM110402B	Installation of Racks and Supports (AD Area - Pipe Rack 1 Modules 3,8,9)	0d			22d	07-Mar-17	31-Mar-17	0%	-133d						
676	EM110402C	Cable Rack and Cable Tray (AD Area - Pipe Rack 1)	0d			36d	24-Feb-17	07-Apr-17	0%	-133d						
677	EM110405	Civil Modification Work of Racks and Supports (AD Area - Pipe Rack 3)	0d			5d	01-Mar-17	06-Mar-17	0%	-131d						
678	EM110405A	Installation of Racks and Supports (AD Area - Pipe Rack 3)	0d			12d	07-Mar-17	20-Mar-17	0%	-111d						
679	EM110405B	Cable Rack and Cable Tray (AD Area - Pipe Rack 3)	0d			19d	18-Mar-17	10-Apr-17	0%	-111d						
680	EM110407	Civil Modification Work of Racks and Supports (AD Area - Pipe Rack 4)	0d			4d	11-Mar-17	15-Mar-17	0%	-135d						
681	EM110407A	Installation of Racks and Supports (AD Area - Pipe Rack 4)	0d			12d	16-Mar-17	29-Mar-17	0%	-117d						
682	EM110407B	Cable Rack and Cable Tray (AD Area - Pipe Rack 4)	0d			15d	30-Mar-17	20-Apr-17	0%	-117d						
683	EM110408	Installation of Monorail (Suspension Buffer Pump Room)	0d			0d	24-Jan-17 A	08-Feb-17 A	100%							
684	EM110410	Anaerobic Digestion Treatment System Pipework	0d			55d	17-Feb-17 A	20-May-17	30.38%	-143d						
685	EM110415	Anaerobic Digestion Treatment System Instrumentation and Control	0d			30d	21-Apr-17	27-May-17	0%	-143d						

#	Activity ID	Activity Name	BL Project Duration	BL Project Start	BL Project Finish	Remaining Duration	Start	Finish	Activity % Complete	Total Float	Variance - BL Project	2017				
												Feb	Mar	Apr	May	
686	EM110420	Anaerobic Digestion Treatment System Cable Tray Laying Work	92d	06-Apr-16	26-Jul-16	68d	24-Jan-17 A	27-May-17	2.86%	-139d	-247d					
687	EM110430	Anaerobic Digestion Treatment System Local Control Panel / Switch	0d			22d	15-Mar-17	10-Apr-17	0%	-122d						
688	EM110440	Anaerobic Digestion Treatment System Cabling Works	95d	16-May-16	05-Sep-16	45d	06-Apr-17	03-Jun-17	0%	-140d	-217d					
689	Installation of Control Panels		39d	29-Mar-16	16-May-16	25d	07-Mar-17	05-Apr-17		-17d	-266d					
690	EM110490	Installation of MCC Panels at AD MCC Room	0d	39d	29-Mar-16	16-May-16	25d	07-Mar-17	05-Apr-17		-17d	-266d				
691	EM110490	Installation of MCC Panels at AD MCC Room	0d			18d	15-Mar-17	05-Apr-17	0%	-101d						
692	EM110500	Installation of Control and Package Panels at AD MCC Room	39d	29-Mar-16	16-May-16	23d	07-Mar-17	01-Apr-17	0%	-15d	-264d					
693	Heat Recovery and Power Generation System		126d	04-Jul-16	30-Nov-16	86d	14-Sep-16 A	06-Jun-17		-140d	-148d					
694			126d	04-Jul-16	30-Nov-16	86d	14-Sep-16 A	06-Jun-17		-140d	-148d					
695			126d	04-Jul-16	30-Nov-16	86d	14-Sep-16 A	06-Jun-17		-140d	-148d					
696	EM120100	Installation of Combine Heat Power System no 1 (Summary)	39d	04-Jul-16	17-Aug-16	27d	14-Sep-16 A	21-Mar-17	64%	-111d	-176d					
697	EM120150	Installation of Combine Heat Power System no 2 (Summary)	40d	18-Aug-16	05-Oct-16	27d	14-Sep-16 A	21-Mar-17	64%	-111d	-136d					
698	EM120200	Installation of Combine Heat Power System no 3 (Summary)	40d	06-Oct-16	22-Nov-16	27d	14-Sep-16 A	21-Mar-17	64%	-111d	-96d					
699	EM120220	Installation of Combine Heat Power System Accessories no. 1 to 3	0d			26d	20-Feb-17*	21-Mar-17	0%	-111d						
700	EM120260	Installation of CHP Stack	0d			26d	06-May-17	06-Jun-17	0%	-140d						
701	EM120320	Heat Recovery and Power Generation System Pipework	0d			30d	22-Mar-17	29-Apr-17	0%	-111d						
702	EM120330	Heat Recovery and Power Generation System Instrumentation and Control	0d			10d	19-Apr-17	29-Apr-17	0%	-111d						
703	EM120350	Installation of Continuous Emissions Monitoring System (CEMS)	26d	01-Nov-16	30-Nov-16	26d	22-Mar-17	25-Apr-17	0%	-107d	-115d					
704	EM120400	Heat Recovery and Power Generation System Cable Tray Laying Works	26d	01-Nov-16	30-Nov-16	9d	03-Jan-17 A	28-Feb-17	70%	-104d	-71d					
705	EM120410	Heat Recovery and Power Generation System Local Control Panel / Switch	0d			15d	01-Mar-17	17-Mar-17	0%	-104d						
706	EM120450	Heat Recovery and Power Generation System Cabling Works	39d	17-Oct-16	30-Nov-16	20d	22-Mar-17	18-Apr-17	0%	-107d	-109d					
707	Installation of Control Panels		0d			23d	16-Mar-17	12-Apr-17		-118d						
708			0d			23d	16-Mar-17	12-Apr-17		-118d						
709	EM19011H	Installation of MCC Panels at Heat Recovery & CHP MCC Rooms	0d			18d	16-Mar-17	06-Apr-17	0%	-113d						
710	EM19021H	Installation of Control and Package Panels at Heat Recovery & CHP MCC Rooms	0d			23d	16-Mar-17	12-Apr-17	0%	-118d						
711	Biogas Cleaning and Storage System		43d	01-Sep-16	24-Oct-16	112d	13-Feb-17 A	07-Jul-17		-69d	-206d					
712			43d	01-Sep-16	24-Oct-16	112d	13-Feb-17 A	07-Jul-17		-69d	-206d					
713			43d	01-Sep-16	24-Oct-16	112d	13-Feb-17 A	07-Jul-17		-69d	-206d					
714	EM130200	Installation of Bio Gas Storage Tank	26d	01-Sep-16	03-Oct-16	29d	06-Apr-17*	15-May-17	0%	-130d	-179d					
715	EM130350	Biogas Cleaning and Storage System Pipework	31d	15-Sep-16	24-Oct-16	66d	18-Apr-17	07-Jul-17	0%	-78d	-206d					
716	EM130400	Biogas Cleaning and Storage System Cable Tray Laying Works	39d	01-Sep-16	19-Oct-16	60d	23-Mar-17	09-Jun-17	0%	-45d	-186d					
717	EM130410	Biogas Cleaning and Storage System Local Control Panel / Switch	0d			25d	13-Feb-17 A	18-Mar-17	0%	-5d						
718	Biogas Distribution System		74d	02-Jul-16	27-Sep-16	102d	21-Sep-16 A	24-Jun-17		-38d	-217d					
719			74d	02-Jul-16	27-Sep-16	102d	21-Sep-16 A	24-Jun-17		-38d	-217d					
720			74d	02-Jul-16	27-Sep-16	102d	21-Sep-16 A	24-Jun-17		-38d	-217d					
721	EM130250	Installation of Standby Flaring Gas Unit	18d	02-Jul-16	22-Jul-16	42d	21-Sep-16 A	08-Apr-17	95%	-137d	-213d					
722	EM130260	Installation of Biogas Blowers	18d	02-Jul-16	22-Jul-16	42d	26-Sep-16 A	08-Apr-17	95%	-103d	-213d					
723	EM130270	Installation of Biogas Cooling and Condensate Removal System	18d	02-Jul-16	22-Jul-16	30d	06-Apr-17	16-May-17	0%	-142d	-240d					
724	EM130272	Civil Modification and New Footings Work of Racks and Supports (Biogas Area - Pipe Rack 2)	0d			21d	01-Feb-17 A	14-Mar-17	36%	-49d						
725	EM130273	Installation of Racks and Supports (Biogas Area - Pipe Rack 2)	0d			64d	15-Mar-17	05-Jun-17	0%	-49d						
726	EM130274	Cable Rack and Cable Tray (Biogas Area - Pipe Rack 2)	0d			28d	05-May-17	07-Jun-17	0%	-49d						
727	EM130275	Biogas Distribution System Pipework	0d			40d	19-Apr-17	07-Jun-17	0%	-142d						
728	EM130276	Biogas Distribution System Instrumentation and Control	0d			30d	02-May-17	07-Jun-17	0%	-142d						
729	EM130278	Carbon Filters	0d			42d	23-Sep-16 A	08-Apr-17	92%	-97d						
730	EM130280	Biogas Distribution System Cable Tray Laying Works	39d	23-Jul-16	06-Sep-16	102d	01-Feb-17 A	24-Jun-17	15%	-38d	-234d					
731	EM130285	Biogas Distribution System Local Control Panel / Switch	0d			15d	06-Apr-17	26-Apr-17	0%	-38d						
732	EM130290	Biogas Distribution System Cabling Works	17d	07-Sep-16	27-Sep-16	45d	22-Apr-17	16-Jun-17	0%	-49d	-210d					
733	Installation of Control Panels		0d			23d	16-Mar-17	12-Apr-17		-114d						
734			0d			23d	16-Mar-17	12-Apr-17		-114d						
735	EM19011G	Installation of MCC Panels at Biogas MCC Rooms	0d			18d	16-Mar-17	06-Apr-17	0%	-109d						
736	EM19021G	Installation of Control and Package Panels at Biogas MCC Rooms	0d			23d	16-Mar-17	12-Apr-17	0%	-114d						
737	Wastewater Treatment System		110d	04-Feb-16	22-Jun-16	92d	23-Sep-16 A	13-Jun-17		-75d	-288d					
738			94d	26-Feb-16	22-Jun-16	92d	23-Sep-16 A	13-Jun-17		-75d	-288d					
739			94d	26-Feb-16	22-Jun-16	92d	23-Sep-16 A	13-Jun-17		-75d	-288d					
740	EM140100	Installation of Pumping System and associated pipework	40d	26-Feb-16	16-Apr-16	80d	03-Mar-17	12-Jun-17	0%	-145d	-341d					
741	EM140150	Installation of Aeration System (SBR)	24d	18-Apr-16	17-May-16	15d	08-Feb-17 A	07-Mar-17	37.5%	-114d	-241d					
742	EM140200	Installation of Odour Containment System (GRP Cover for WWTP)	26d	18-May-16	17-Jun-16	33d	08-Mar-17	19-Apr-17	0%	-114d	-248d					

#	Activity ID	Activity Name	BL Project Duration	BL Project Start	BL Project Finish	Remaining Duration	Start	Finish	Activity % Complete	Total Float	Variance - BL Project	2017					
												Feb	Mar	Apr	May		
743	EM140250	Installation of Odour Extraction Ductwork (for WWTP)	21d	28-May-16	22-Jun-16	21d	06-Apr-17	05-May-17	0%	-114d	-256d						
744	EM140300	Installation of Ammonia Stripping Plant	51d	14-Apr-16	15-Jun-16	25d	23-Sep-16 A	18-Mar-17	61%	-111d	-227d						
745	EM140330	Wastewater Treatment System Pipework	0d			74d	07-Mar-17	08-Jun-17	0%	-142d							
746	EM140332	Wastewater Treatment System Instrumentation and Control	0d			37d	24-Apr-17	08-Jun-17	0%	-142d							
747	EM140345	Installation of ASP Stack	0d			26d	06-May-17	06-Jun-17	0%	-101d							
748	EM140348	Diesel Tank Installation (ASP)	0d			23d	17-May-17	13-Jun-17	0%	-101d							
749	EM140350	Wastewater Treatment System Cable Tray Laying Works	21d	18-Apr-16	12-May-16	57d	15-Feb-17 A	29-Apr-17	5%	-52d	-286d						
750	EM140360	Wastewater Treatment System Local Control Panel / Switch	0d			28d	24-Mar-17	29-Apr-17	0%	-52d							
751	EM140400	Wastewater Treatment System Cabling Works	26d	13-May-16	14-Jun-16	40d	24-Mar-17	16-May-17	0%	-52d	-272d						
752	Installation of Control Panels			41d	04-Feb-16	29-Mar-16	24d	31-Mar-17	04-May-17		-56d	-324d					
753	EM170240	Installation of MCC Panels at WWTP MCC Room	0d			18d	31-Mar-17	25-Apr-17	0%	-127d							
754	EM170250	Installation of Control and Package Panels at WWTP MCC Room	41d	04-Feb-16	29-Mar-16	24d	31-Mar-17	04-May-17	0%	-56d	-324d						
756	Composting System			144d	24-May-16	12-Nov-16	91d	28-Sep-16 A	12-Jun-17		-65d	-168d					
757	Installation of Tunnel Composting 1 to 6			51d	22-Aug-16	22-Oct-16	61d	01-Dec-16 A	06-May-17		-126d	-156d					
758	EM160150	Installation of Water Spraying System / Pipework	51d	22-Aug-16	22-Oct-16	52d	01-Dec-16 A	06-May-17	38%	-137d	-156d						
760	EM160160	Installation of Composting Pipework Instrumentation and Control	0d			22d	06-Apr-17	06-May-17	0%	-126d							
761	EM160201	Installation of Tunnel Doors	0d			24d	22-Mar-17*	22-Apr-17	0%	-137d							
762	EM160203	Installation of Heat Exchanger, High Pressure Fans, Hot Water Pumps	0d			19d	13-Dec-16 A	11-Mar-17	62%	-95d							
763	Installation of Leachate Treatment System			18d	24-Oct-16	12-Nov-16	22d	24-Apr-17	20-May-17		-137d	-150d					
764	EM160200	Installation of Leachate Treatment System / Pipework	18d	24-Oct-16	12-Nov-16	12d	05-May-17	18-May-17	0%	-135d	-148d						
766	EM160205	Installation of Leachate Treatment System Instrumentation and Control	0d			20d	24-Apr-17	18-May-17	0%	-135d							
767	EM160210	Leachate Pump Chamber, Pump Installation	0d			18d	28-Apr-17	20-May-17	0%	-137d							
768	Installation of Maturation Area			93d	24-May-16	10-Sep-16	91d	28-Sep-16 A	12-Jun-17		-65d	-219d					
769	EM160250	Installation of Air Extraction System / Ductwork (Maturation Area)	93d	24-May-16	10-Sep-16	91d	28-Sep-16 A	12-Jun-17	0%	-65d	-219d						
770	EM160400	Installation of Mixing Unit	18d	22-Aug-16	10-Sep-16	66d	20-Mar-17	12-Jun-17	0%	-65d	-219d						
771	EM160400	Installation of Mixing Unit	2d	24-May-16	25-May-16	14d	01-Apr-17*	21-Apr-17	0%	-115d	-269d						
772	EM160450	Maturation Area Cable Tray Laying Works	9d	26-May-16	04-Jun-16	0d	28-Sep-16 A	07-Feb-17 A	100%	-201d							
773	EM160460	Maturation Area Local Control Panel / Switch	0d			15d	13-Feb-17 A	07-Mar-17	25%	-41d							
774	EM160500	Maturation Area Cabling Works	12d	06-Jun-16	20-Jun-16	60d	27-Feb-17*	13-May-17	0%	-41d	-265d						
775	Installation of Structurant Storage Area			44d	24-May-16	15-Jul-16	62d	20-Mar-17	07-Jun-17		-139d	-264d					
776	EM160550	Installation of Air Extraction System / Ductwork (Structurant Storage Area)	44d	24-May-16	15-Jul-16	62d	20-Mar-17	07-Jun-17	0%	-139d	-264d						
777	EM160650	Structurant Storage Arera Cable Tray Laying Works	26d	24-May-16	23-Jun-16	42d	20-Mar-17*	13-May-17	0%	-125d	-262d						
778	EM160650	Structurant Storage Arera Local Control Panel / Switch	12d	24-Jun-16	08-Jul-16	36d	06-Apr-17	23-May-17	0%	-139d	-258d						
779	EM160660	Structurant Storage Arera Cabling Works	0d			12d	10-May-17	23-May-17	0%	-139d							
780	EM160700	Structurant Storage Arera Cabling Works	12d	02-Jul-16	15-Jul-16	24d	10-May-17	07-Jun-17	0%	-139d	-264d						
781	Installation of Digestate Dewatering System			60d	16-Jul-16	24-Sep-16	87d	28-Sep-16 A	07-Jun-17		-61d	-204d					
782	EM160620	Installation of Monorail (Dewatering)	0d			19d	27-Dec-16 A	11-Mar-17	66%	-128d							
784	EM160750	Installation of Centrifuges	9d	16-Jul-16	26-Jul-16	23d	21-Feb-17*	18-Mar-17	0%	-130d	-193d						
785	EM160754	Installation of Platform (Dewatering Area)	0d			20d	16-Mar-17	08-Apr-17	0%	-140d							
786	EM160758	Installation of Sandfilter	0d			11d	10-Apr-17	25-Apr-17	0%	-133d							
787	EM160759	Installation of Break Tank	0d			11d	10-Apr-17	25-Apr-17	0%	-133d							
788	EM160760	Installation of Polymer Storage Tank	0d			24d	01-Apr-17	05-May-17	0%	-141d							
789	EM160764	Installation of Polymer Feed Pumps	0d			26d	20-Mar-17	22-Apr-17	0%	-130d							
790	EM160770	Installation of Polymer Mixing Unit	0d			22d	24-Apr-17	20-May-17	0%	-60d							
791	EM160780	Installation of Anti-Foaming and Anti-Scalant System	0d			22d	24-Apr-17	20-May-17	0%	-47d							
792	EM160800	Installation of Centrate Discharge Pumps	9d	27-Jul-16	05-Aug-16	20d	06-May-17	29-May-17	0%	-140d	-239d						
793	EM160820	Installation of Bollfilter	0d			18d	06-May-17	26-May-17	0%	-138d							
794	EM160900	Installation of Centrate Tank	4d	17-Aug-16	20-Aug-16	18d	10-Apr-17	05-May-17	0%	-140d	-206d						
795	EM160920	Installation of Sieve Plastic Drum	0d			4d	09-May-17	12-May-17	0%	-132d							
796	EM160970	Digestate Dewatering System Pipework (with Supports)	0d			45d	01-Apr-17	31-May-17	0%	-141d							
797	EM160980	Digestate Dewatering System Instrumentation and Control	0d			30d	24-Apr-17	31-May-17	0%	-141d							
798	EM161000	Digestate Dewatering System Cable Tray Laying Work	43d	22-Jul-16	09-Sep-16	17d	28-Sep-16 A	09-Mar-17	73%	-81d	-146d						

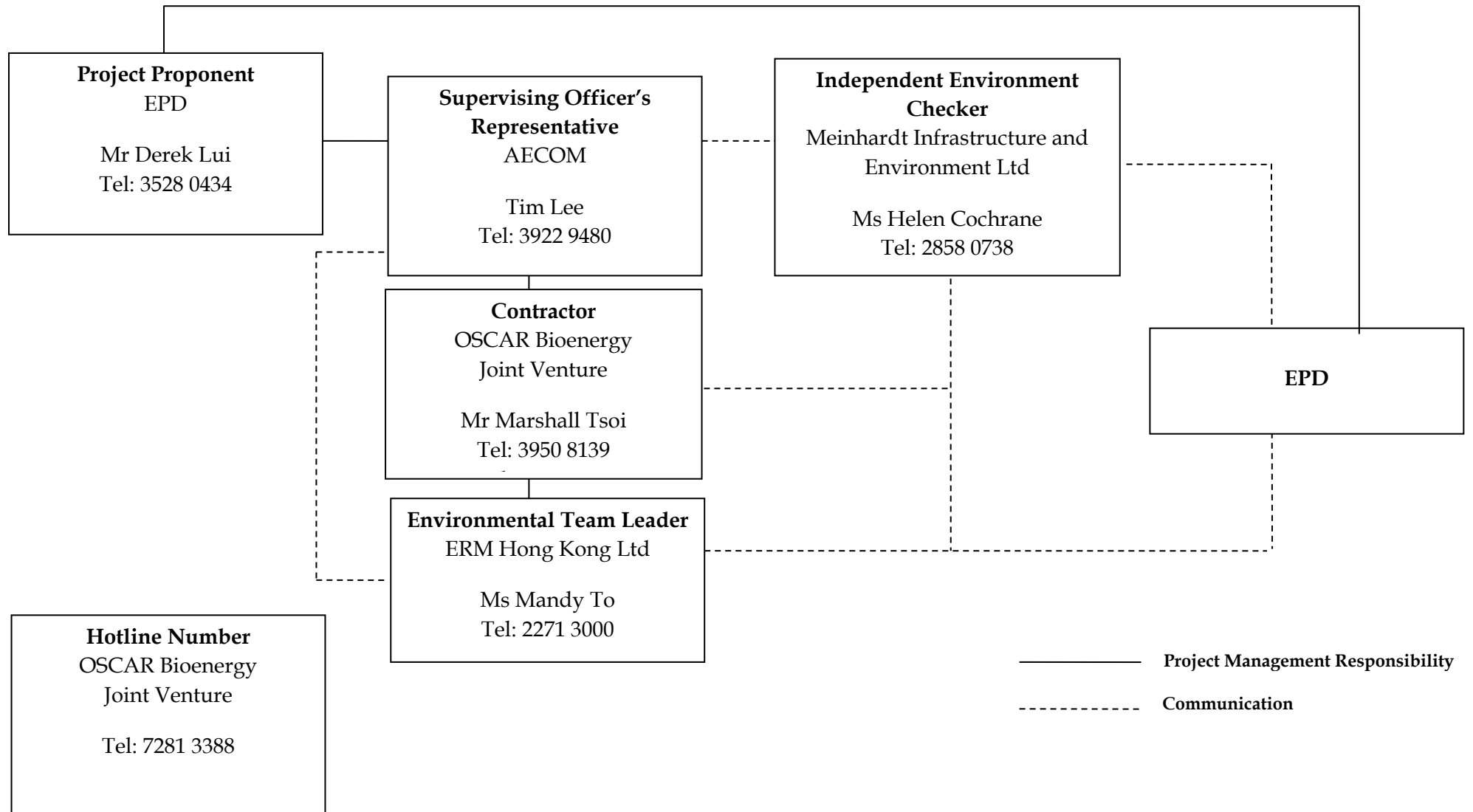
#	Activity ID	Activity Name	BL Project Duration	BL Project Start	BL Project Finish	Remaining Duration	Start	Finish	Activity % Complete	Total Float	Variance - BL Project	2017			
												Feb	Mar	Apr	May
799	EM161010	Digestate Dewatering System Local Control Panel / Switch	0d			20d	22-Feb-17	16-Mar-17	0%	-59d					
800	EM161050	Digestate Dewatering System Cabling Works	43d	05-Aug-16	24-Sep-16	45d	10-Apr-17	07-Jun-17	0%	-123d	-204d				
801	Installation of Control Panels		39d	24-May-16	09-Jul-16	26d	11-Jan-17 A	20-Mar-17		-97d	-208d				
802			39d	24-May-16	09-Jul-16	26d	11-Jan-17 A	20-Mar-17		-97d	-208d				
803	EM161140	Installation of MCC Panels at Composting MCC Rooms	0d			21d	11-Jan-17 A	15-Mar-17	56%	-102d					
804	EM161150	Installation of Control and Package Panels at Composting MCC Rooms	39d	24-May-16	09-Jul-16	0d	11-Jan-17 A	17-Jan-17 A	100%		-158d				
805	EM161155	Installation of MCC Panels at Dewatering MCC Rooms	0d			26d	12-Jan-17 A	20-Mar-17	56%	-97d					
806	EM161160	Installation of Control and Package Panels at Dewatering MCC Rooms	0d			26d	12-Jan-17 A	20-Mar-17	56%	-97d					
807	Centralized Air Pollution Control System		108d	18-Apr-16	25-Aug-16	97d	28-Nov-16 A	19-Jun-17		-55d	-239d				
808			108d	18-Apr-16	25-Aug-16	97d	28-Nov-16 A	19-Jun-17		-55d	-239d				
809			108d	18-Apr-16	25-Aug-16	97d	28-Nov-16 A	19-Jun-17		-55d	-239d				
810	EM150100	Installation of Chemical Scrubber in Building 1	26d	18-Apr-16	19-May-16	46d	20-Dec-16 A	13-Apr-17	50%	-132d	-270d				
811	EM150150	Installation of Dosing Pumps and associated pipeworks in Building 1	26d	28-Apr-16	30-May-16	20d	30-Mar-17	26-Apr-17	0%	-130d	-269d				
812	EM150200	Installation of Activated Carbon Filter in Building 1	26d	31-May-16	30-Jun-16	46d	20-Dec-16 A	13-Apr-17	50%	-110d	-235d				
813	EM150250	Installation of Odour Extraction Duct Work, Associated Accessories and Stack Unit in Building 1	77d	26-May-16	25-Aug-16	62d	25-Feb-17	15-May-17	0%	-132d	-210d				
814	EM150260	Installation of CAPCS Instrumentation and Control in Building 1	0d			21d	19-Apr-17	15-May-17	0%	-132d					
815	EM150300	Installation of Chemical Day Tanks and Water Tank in Building 1	26d	31-May-16	30-Jun-16	20d	18-Apr-17	12-May-17	0%	-130d	-255d				
816	EM150305	Air Extraction Fans in Building 1	0d			57d	20-Dec-16 A	29-Apr-17	43%	-121d					
817	EM150315	Installation of Odour Extraction Duct Work & Associated Accessories in Building 2	0d			44d	28-Nov-16 A	11-Apr-17	48%	-120d					
818	EM150317	Installation of CAPCS Instrumentation and Control in Building 2	0d			30d	07-Mar-17	11-Apr-17	0%	-108d					
819	EM150320	Installation of Odour Extraction Duct Work & Associated Accessories in AD Tank Area	0d			40d	02-Mar-17	21-Apr-17	0%	-142d					
820	EM150330	Installation of CAPCS Instrumentation and Control in AD Tank Area	0d			20d	25-Mar-17	21-Apr-17	0%	-8d					
821	EM150350	Cable Tray Laying Works (CAPCS - Building 1 & AD Area)	34d	20-May-16	29-Jun-16	35d	22-Apr-17	05-Jun-17	0%	-142d	-275d				
822	EM150360	Local Control Panel / Switch (CAPCS - Building 1 & AD Area)	0d			25d	06-May-17	05-Jun-17	0%	-136d					
823	EM150400	Cabling Works (CAPCS - Building 1 & AD Area)	26d	30-Jun-16	30-Jul-16	35d	09-May-17	19-Jun-17	0%	-142d	-261d				
824	EM150410	Cable Tray Laying Works (CAPCS - Building 2)	0d			35d	16-Mar-17	29-Apr-17	0%	-143d					
825	EM150420	Local Control Panel / Switch (CAPCS - Building 2)	0d			25d	28-Mar-17	29-Apr-17	0%	-143d					
826	EM150430	Cabling Works (CAPCS - Building 2)	0d			35d	23-Mar-17	09-May-17	0%	-143d					
827	Installation of Control Panels		42d	07-Jun-16	27-Jul-16	23d	20-Mar-17	19-Apr-17		-22d	-215d				
828			42d	07-Jun-16	27-Jul-16	23d	20-Mar-17	19-Apr-17		-22d	-215d				
829	EM150490	Installation of MCC Panels at CAPCS MCC Room	0d			18d	20-Mar-17	10-Apr-17	0%	-112d					
830	EM150500	Installation of Control and Package Panels at CAPCS MCC Room	42d	07-Jun-16	27-Jul-16	23d	20-Mar-17	19-Apr-17	0%	-22d	-215d				
831	Process Utilities (Compressed Air, Process Water, Process Clean Water)		0d			71d	28-Feb-17	27-May-17		179d					
832			0d			71d	28-Feb-17	27-May-17		179d					
833			0d			71d	28-Feb-17	27-May-17		179d					
834	EM210150	Installation of Compressed Air System	0d			54d	09-Mar-17	17-May-17	0%	-137d					
835	EM210160	Air Compressor Installation in Building 1	0d			41d	16-Mar-17	09-May-17	0%	-143d					
836	EM210170	Compressed Air Pipework (All Buildings)	0d			45d	30-Mar-17	27-May-17	0%	-143d					
837	EM210180	Compressed Air Instrumentation and Control (All Buildings)	0d			32d	19-Apr-17	27-May-17	0%	-143d					
838	EM210200	Installation of Process Water System	0d			20d	16-Mar-17	08-Apr-17	0%	216d					
839	EM210210	Process Water Pump Installation in Building 1 Pre-treatment Plant	0d			20d	28-Feb-17	22-Mar-17	0%	-114d					
840	EM210220	Process Water Pipework Installation (All Buildings)	0d			24d	23-Mar-17	24-Apr-17	0%	-114d					
841	EM210230	Process Water Instrumentation and Control Installation (All Buildings)	0d			15d	03-Apr-17	24-Apr-17	0%	-114d					
842	EM210250	Installation of Process Clean Water System	0d			24d	01-Apr-17	05-May-17	0%	-124d					
843	EM210260	Process Clean Water Pump Installation in Building 1	0d			24d	18-Apr-17*	17-May-17	0%	-134d					
844	EM210270	Process Clean Water Pipework Installation (All Buildings)	0d			45d	20-Mar-17	17-May-17	0%	-134d					
845	EM210280	Process Clean Water Instrumentation and Control Installation (All Buildings)	0d			23d	19-Apr-17	17-May-17	0%	188d					
846	EM210300	Process Utilities Cable Tray Laying Works	0d			50d	16-Mar-17	19-May-17	0%	-134d					
847	EM210310	Process Utilities Local Control Panel / Switch	0d			10d	09-May-17	19-May-17	0%	-134d					
848	EM210350	Process Utilities Cabling Works	0d			40d	05-Apr-17	26-May-17	0%	-134d					
849	Hot Water System		39d	29-Aug-16	15-Oct-16	79d	01-Mar-17	08-Jun-17		170d	-189d				
850			39d	29-Aug-16	15-Oct-16	79d	01-Mar-17	08-Jun-17		170d	-189d				
851			39d	29-Aug-16	15-Oct-16	79d	01-Mar-17	08-Jun-17		170d	-189d				
852	EM120300	Installation of Electric Boiler / Heater	39d	29-Aug-16	15-Oct-16	15d	14-Mar-17*	30-Mar-17	0%	-107d	-136d				
853	EM210100	Installation of Hot Water Pumps	0d			22d	01-Mar-17	25-Mar-17	0%	-118d					

#	Activity ID	Activity Name	BL Project Duration	BL Project Start	BL Project Finish	Remaining Duration	Start	Finish	Activity % Complete	Total Float	Variance - BL Project	2017			
												Feb	Mar	Apr	May
910	EM19022B	Cables and Accessories, Cable Containment System Installation	115d	18-Apr-16	02-Sep-16	94d	09-Jan-17 A	17-Jun-17	16%	-37d	-231d				
911	EM19023B	Earthing and Lightning System Installation	210d	15-Dec-15	31-Aug-16	48d	31-Aug-15 A	08-May-17	73%	-124d	-198d				Earthing and L
912	EM19024B	Emergency Genset Installation	30d	08-Jul-16	11-Aug-16	2d	19-Dec-16 A	28-Mar-17	97.14%	-19d	-187d			Emergency Genset Installation	
913	EM19024D	Diesel Tank Installation (Genset)	0d			2d	17-Feb-17 A	20-Feb-17	90%	-17d				Diesel Tank Installation (Genset)	
914	EM19024P	Diesel Tank Pipework (Genset)	0d			30d	01-Mar-17	05-Apr-17	0%	-24d				Diesel Tank Pipework (Genset)	
915	EM19024T	Diesel Tank Pipework Instrumentation and Control (Genset)	0d			10d	24-Mar-17	05-Apr-17	0%	-24d				Diesel Tank Pipework Instrumentation and Control (Genset)	
916	EM19025B	Equipment at Gate House	12d	11-May-16	25-May-16	12d	18-Apr-17	02-May-17	0%	1d	-277d			Equipment at Gate House	
917	EM19030B	ELV System Installation	60d	22-Jun-16	31-Aug-16	50d	01-Apr-17	06-Jun-17	0%	-137d	-223d				
918	General		0d			66d	01-Mar-17	23-May-17		-16d					
919	Civil Modification Work of Pipe Crossing 1 & 2		0d			66d	01-Mar-17	23-May-17		-16d					
920	EM19055B	Civil Modification Work of Pipe Crossing 1 & 2	0d			12d	16-Mar-17	29-Mar-17	0%	-135d				Civil Modification Work of Pipe Crossing 1 & 2	
921	EM19065B	Installation of Pipe Crossing 1 & 2	0d			35d	31-Mar-17	17-May-17	0%	-140d					
922	EM19075B	Cable Rack and Cable Tray Installation of Pipe Crossing 1 & 2	0d			23d	24-Apr-17	22-May-17	0%	-140d					
923	EM200060	Lifting Appliances, Monorail	0d			45d	16-Mar-17	13-May-17	0%	-8d					Lifti
924	EM200070	Roller Shutters (Local)	0d			45d	01-Mar-17*	26-Apr-17	0%	5d				Roller Shutters (Local)	
925	EM200080	Roller Shutters (UK)	0d			45d	25-Mar-17	23-May-17	0%	-136d					
926	Energisation of Switchboards with Site Acceptance Test (SAT)		1d	28-Jul-16	28-Jul-16	68d	02-Feb-17 A	02-Jun-17		-69d	-249d				
927	Energisation of Switchboard (Transformer Room) & SAT		1d	28-Jul-16	28-Jul-16	68d	02-Feb-17 A	02-Jun-17		-69d	-249d				
928	Energisation of Switchboard (Main LV Switchroom) & SAT		1d	28-Jul-16	28-Jul-16	68d	02-Feb-17 A	02-Jun-17		-69d	-249d				
929	EN100050	Energisation of Switchboard (Transformer Room) & SAT	0d			0d	02-Feb-17 A	15-Feb-17 A	100%					Energisation of Switchboard (Transformer Room) & SAT	
930	EN100100	Energisation of Switchboard (Main LV Switchroom) & SAT	1d	28-Jul-16	28-Jul-16	12d	08-Mar-17	21-Mar-17	0%	-119d	-193d			Energisation of Switchboard (Main LV Switchroom) & SAT	
931	EN100150	Energisation of MCC (For Anaerobic Digestion System) & SAT	1d	28-Jul-16	28-Jul-16	12d	13-Apr-17	29-Apr-17	0%	-113d	-223d			Energisation of MCC (For Ana	
932	EN100200	Energisation of MCC (For Waste Water Treatment System) & SAT	1d	28-Jul-16	28-Jul-16	18d	12-May-17	02-Jun-17	0%	-145d	-249d				
933	EN100250	Energisation of MCC (For Composting System) & SAT	1d	28-Jul-16	28-Jul-16	18d	27-Mar-17	20-Apr-17	0%	-112d	-215d			Energisation of MCC (For Composting System)	
934	EN100280	Energisation of MCC (For Dewatering System) & SAT	0d			12d	03-Apr-17	20-Apr-17	0%	-108d				Energisation of MCC (For Dewatering System)	
935	EN100300	Energisation of MCC (For Waste Receiving and Pre-Treatment System) & SAT	1d	28-Jul-16	28-Jul-16	12d	12-May-17	25-May-17	0%	-133d	-243d				
936	EN100350	Energisation of MCC (For Centralized Air Pollution System) & SAT	1d	28-Jul-16	28-Jul-16	12d	05-May-17	18-May-17	0%	-134d	-237d				
937	EN100400	Energisation of MCC (For Heat Recovery and Power Generation System) & SAT	0d			12d	06-Apr-17	22-Apr-17	0%	-106d				Energisation of MCC (For Heat Recovery ar	
938	EN100450	Energisation of MCC (For Biogas Storage and Cleaning System) & SAT	0d			12d	06-Apr-17	22-Apr-17	0%	-37d				Energisation of MCC (For Biogas Storage at	
939	HANDOVER FROM CONSTRUCTION TO COMMISSIONING		0d			69d	18-Feb-17	16-May-17		-13d					
940	Transformer Room and Main HVLV Installation Completed		0d			69d	18-Feb-17	16-May-17		-13d					
941	ASP Area Handover		0d			69d	18-Feb-17	16-May-17		-13d					
942	Building 1 (Roof Pretreatment) Handover		0d			69d	18-Feb-17	16-May-17		-13d					
943	HE160010	Transformer Room and Main HVLV Installation Completed	0d			0d		25-Mar-17	0%	-86d				Transformer Room and Main HVLV Installation Completed	
944	HE160250	ASP Area Handover	0d			1d	26-Apr-17	26-Apr-17	0%	-107d				ASP Area Handover	
945	HE160300	Building 1 (Roof Pretreatment) Handover	0d			1d	16-May-17	16-May-17	0%	-132d					
946	HE160350	Fire Hydrant Network Handover	0d			1d	11-May-17	11-May-17	0%	-50d				Fire Hyd	
947	HE160450	Workshop Room Handover	0d			0d	18-Feb-17	18-Feb-17	0%	-48d				Workshop Room Handover	
948	HE160500	CEMS Calibration Fluids storage Room Handover	0d			1d	26-Apr-17	26-Apr-17	0%	-107d				CEMS Calibration Fluids storage Roc	
949	HE161150	Process Water Room Handover	0d			1d	16-May-17	16-May-17	0%	-129d					
950	HE161200	CEMS Area Handover	0d			1d	26-Apr-17	26-Apr-17	0%	-107d				CEMS Area Handover	
951	HE161850	Building 3 Gen set room Handover	0d			1d	29-Mar-17	29-Mar-17	0%	-19d				Building 3 Gen set room Handover	
952	HE162300	Composting Room Handover	0d			2d	08-May-17	09-May-17	0%	-126d				Composting	
953	HE162450	Composting Corridor (+ tunnels) Handover	0d			1d	08-May-17	08-May-17	0%	-125d				Composting C	
954	HE162700	Hot Water Pump Room for BS Handover	0d			1d	24-Apr-17	24-Apr-17	0%	4d				Hot Water Pump Room for BS Handov	

Annex D

Project Organization Chart with Contact Details

Project Organization During Construction Phase (with contact details)



Annex E

Implementation Schedule of Mitigation Measures

Annex E Summary of Mitigation Measures Implementation Schedule

EIA Ref.	EM&A Log Ref.	Environmental Protection Measures	Location/ Timing	Status
<i>Summary of Environmental Mitigation Measures in the EIA and EM&A Manual</i>				
A. Air Quality				
3.73	2.5	<p><u>Air Pollution Control (Construction Dust) Regulation & Good Site Practices</u></p> <ul style="list-style-type: none"> • Use of regular watering, with complete coverage, to reduce dust emissions from exposed site surfaces and unpaved roads, particularly during dry weather. • Use of frequent watering for particularly dusty construction areas and areas close to ASRs. • Side enclosure and covering of any aggregate or dusty material storage piles to reduce emissions. Where this is not practicable owing to frequent usage, watering should be applied to aggregate fines. • Open stockpiles should be avoided or covered. Where possible, prevent placing dusty material storage piles near ASRs. • Tarpaulin covering of all dusty vehicle loads transported to, from and between site locations. • Establishment and use of vehicle wheel and body washing facilities at the exit points of the site. • Provision of wind shield and dust extraction units or similar dust mitigation measures at the loading points, and use of water sprinklers at the loading area where dust generation is likely during the loading process of loose material, particularly in dry seasons/ periods. • Imposition of speed controls for vehicles on unpaved site roads. 8 kilometers per hour is the recommended limit. • Where possible, routing of vehicles and positioning of construction plant should be at the maximum possible distance from ASRs. • Every stock of more than 20 bags of cement or dry pulverised fuel ash (PFA) should be covered entirely by impervious sheeting or placed in an area sheltered on the top and the 3 sides. • Cement or dry PFA delivered in bulk should be stored in a closed silo fitted with an audible high level alarm which is interlocked with the material filling line and no overfilling is allowed. • Loading, unloading, transfer, handling or storage of bulk cement or dry PFA should be carried out in a totally enclosed system or facility, and any vent or exhaust should be fitted with an effective fabric filter or equivalent air pollution control system. 	Construction Site / During Construction Period	<>
B. Hazard to Life				
4.102	3.3	<p><u>Construction Phase</u></p> <ul style="list-style-type: none"> • The number of workers on site during construction stage should be kept at the same level as 	Construction Site / During Construction Period	√

EIA Ref.	EM&A Log Ref.	Environmental Protection Measures	Location/ Timing	Status
		<p>the assessment.</p> <ul style="list-style-type: none"> • Construction works should be suspended when delivery of chlorine takes place. • 3m high fence should be constructed along the boundary facing the SHWWTW. • Emergency evacuation procedures should be formulated and the Contractor should ensure all workers on site should be familiar with these procedures as well as the route to escape in case of gas release incident. Relevant Departments, such as Fire Services Department (FSD), should be consulted during the development of Emergency procedures. Diagram showing the escape routes to a safe place should be posted in the site notice boards and at the entrance/exit of site. A copy of the latest version emergency procedures should be dispatched to Tung Chung Fire Station for reference once available. • The emergency procedures should specify means of providing a rapid and direct warning (e.g. Siren and Flashing Light) to construction workers in the event of chlorine gas release in the SHWWTW. • The Contractor should establish a communication channel with the SHWWTW operation personnel and FSD during construction stage. In case of any hazardous incidents in the treatment works, operation personnel of SHWWTW should advise the Contractor to inform construction workers to proceed with emergency procedure. The Contractor should appoint a Liaison Officer to communicate with FSD Incident Commander on site in case of emergency. • Introduction training should be provided to any staff before carryout construction works at the Project site. • Periodic drills should be coordinated and conducted to ensure all construction personnel are familiar with the emergency procedures. Upon completion of the drills, a review on every step taken should be conducted to identify area of improvement. Prior notice of periodic drills should be given to Station Commander of Tung Chung Fire Station. Joint operational exercise with FSD and SHWWTW is recommended. 		
<i>C. Water Quality</i>				
5.44	4.5	<p><u>Construction site run-off and general construction activities:</u> The mitigation measures as outlined in the ProPECC PN 1/94 Construction Site Drainage should be adopted where applicable.</p>	Construction Site / During Construction Period	<>
5.45	4.5	<p><u>Excavation of Soil Materials</u> The construction programme should be properly planned to minimise soil excavation, if any, in rainy seasons. This prevents soil erosion from exposed soil surfaces. Any exposed soil surfaces should also be properly protected to minimise dust emission. In areas where a large amount of exposed soils exist, earth bunds or sand bags should be provided. Exposed stockpiles should be covered with tarpaulin or impervious sheets at all times. The stockpiles of</p>	Construction Site / During Construction Period	<>

EIA Ref.	EM&A Log Ref.	Environmental Protection Measures	Location/ Timing	Status
		materials should be placed at locations away from any stream courses so as to avoid releasing materials into the water bodies. Final surfaces of earthworks should be compacted and protected by permanent work.		
5.46	4.5	<u>Accidental spillage of chemicals:</u> Contractor must register as a chemical waste producer if chemical wastes would be produced from the construction activities. The Waste Disposal Ordinance (Cap 354) and its subsidiary regulations in particular the Waste Disposal (Chemical Waste) (General) Regulation should be observed and complied with for control of chemical wastes.	Construction Site / During Construction Period	√
5.47	4.5	Maintenance of vehicles and equipments involving activities with potential for leakage and spillage should only be undertaken within the areas which appropriately equipped to control these discharges.	Construction Site / During Construction Period	<>
5.48	4.5	Oils and fuels should only be used and stored in designated areas which have pollution prevention facilities. All fuel tanks and storage areas should be sited on sealed areas in order to prevent spillage of fuels and solvents to the nearby watercourses. All waste oils and fuels should be collected in designated tanks prior to disposal.	Construction Site / During Construction Period	<>
5.49	4.5	Disposal of chemical wastes should be carried out in compliance with the Waste Disposal Ordinance. The Code of Practice on the Packaging, Labelling and Storage of Chemical Wastes published under the Waste Disposal Ordinance details the requirements to deal with chemical wastes. General requirements are given as follows: <ul style="list-style-type: none"> • Suitable containers should be used to hold the chemical wastes to avoid leakage or spillage during storage, handling and transport. • Chemical waste containers should be suitably labeled, to notify and warn the personnel who are handling the wastes, to avoid accidents. • Storage area should be selected at a safe location on site and adequate space should be allocated to the storage area. 	Construction Site / During Construction Period	<>
5.50		Construction solid waste, debris and rubbish on site should be collected, handled and disposed of properly to avoid entering to the nearby watercourses. Stockpiles of cement and other construction materials should be kept covered when not being used. Rubbish and litter from construction sites should also be collected to prevent spreading of rubbish and litter from the site area. It is recommended to clean the construction sites on a regular basis.	Construction Site / During Construction Period	<>
5.51	4.5	<u>Sewage Effluent</u>	Work site/During the	√

EIA Ref.	EM&A Log Ref.	Environmental Protection Measures	Location/ Timing	Status
		The presence of construction workers generates sewage. It is recommended to provide sufficient chemical toilets in the works areas. The toilet facilities should be more than 30m from any watercourse. A licensed waste collector should be deployed to clean the chemical toilets on a regular basis.	construction period	
5.52	4.5	Notices should be posted at conspicuous locations to remind the workers not to discharge any sewage or wastewater into the nearby environment during the construction phase of the project. Regular environmental audit on the construction site can provide an effective control of any malpractices and can achieve continual improvement of environmental performance on site.	Work Site / During Construction Period	√
5.53	4.5	<p><u>Nullah Decking</u></p> <p>To minimize the potential water quality impacts from the nullah reconstruction works, the practices outlined below should be adopted where applicable:</p> <ul style="list-style-type: none"> • The proposed works should be carried out within the dry season between October and March when the flow in the open nullah is low. • The use of less or smaller construction plants may be specified to reduce the disturbance to the nullah bed. • Temporary storage of materials (e.g. equipment, filling materials, chemicals and fuel) and temporary stockpile of construction materials should be located well away from the nullah and any water courses during carrying out of the construction works. • Stockpiling of construction materials and dusty materials should be covered and located away from the nullah any water courses. • Construction debris and spoil should be covered up and/or disposed of as soon as possible to avoid being washed into the nullah and nearby water receivers. • Construction activities, which generate large amount of wastewater, should be carried out in a distance away from the nullah, where practicable. • Construction effluent, site run-off and sewage should be properly collected and/or treated. • Any works site inside the nullah should be temporarily isolated, such as by placing of sandbags or silt curtains with lead edge at bottom and properly supported props to prevent adverse impact on the water quality. • Proper shoring may need to be erected in order to prevent soil/mud from slipping into the nullah and nearby watercourse. • Supervisory staff should be assigned to station 	Work Site / During Construction Period	N/A
<i>D. Waste Management</i>				
6.41	5.4	<u>Good Site Practices</u>	Work Site / During	<>

EIA Ref.	EM&A Log Ref.	Environmental Protection Measures	Location/ Timing	Status
		<p>Recommendations for good site practices during the construction phase would include:</p> <ul style="list-style-type: none"> • Obtain relevant waste disposal permits from appropriate authorities, in accordance with the Waste Disposal Ordinance (Cap. 354) and subsidiary Regulations and the Land (Miscellaneous Provisions) Ordinance (Cap. 28); • Provide staff training for proper waste management and chemical handling procedures; • Provide sufficient waste disposal points and regular waste collection; • Provide appropriate measures to minimize windblown litter and dust during transportation of waste by either covering trucks or by transporting wastes in enclosed containers; • Carry out regular cleaning and maintenance programme for drainage systems, sumps and oil interceptors; • Separate chemical wastes for special handling and disposed of to licensed facility for treatment; and • Employ licensed waste collector to collect waste. 	Construction Period	
6.42	5.5	<p><u>Waste Reduction Measures</u></p> <p>Waste reduction is best achieved at the planning and design stage, as well as by ensuring the implementation of good site practices. Recommendations to achieve waste reduction include:</p> <ul style="list-style-type: none"> • Design foundation works that could minimise the amount of excavated material to be generated; • Provide training to workers on the importance of site cleanliness and appropriate waste management procedures, including waste reduction, reuse and recycling; • Sort out demolition debris and excavated materials from demolition works to recover reusable/ recyclable portions (i.e. soil, broken concrete, metal etc.); • Segregate and store different types of waste in different containers, skips or stockpiles to enhance reuse or recycling of materials and their proper disposal; • Encourage the collection of aluminium cans by providing separate labelled bins to enable this waste to be segregated from other general refuse generated by the workforce; and • Plan and stock construction materials carefully to minimize the amount of waste to be generated and to avoid unnecessary generation of waste. 	Work Site/ During Design & Construction Period	<>
6.44	5.7	<p><u>Excavated and C&D Materials</u></p> <p>In order to minimise the impact resulting from collection and transportation of C&D material for off-site disposal, the excavated material arising from site formation and foundation works should be reused on-site as backfilling material and for landscaping works as far as practicable. Other mitigation requirements are listed below:</p> <ul style="list-style-type: none"> • A WMP, which becomes part of the Environmental Management Plan (EMP), should be prepared in accordance with ETWB TCW No.19/2005; 	Work Site/ During Design & Construction Period	√

EIA Ref.	EM&A Log Ref.	Environmental Protection Measures	Location/ Timing	Status
		<ul style="list-style-type: none"> • A recording system for the amount of wastes generated, recycled and disposed of (including the disposal sites) should be adopted for easy tracking; and • In order to monitor the disposal of excavated and C&D material at public filling facilities and landfills and to control fly-tipping, a trip-ticket system should be adopted (refer to ETWB TCW No. 31/2004). 		
6.45 – 6.46	5.8 – 5.9	<p>An EMP should be prepared and implemented in accordance with ETWB TCW No. 19/2005 which describes the arrangements for avoidance, reuse, recovery, recycling, storage, collection, treatment and disposal of different categories of waste to be generated from construction activities. The EMP should be submitted to the Supervising Officer (SO) and Supervising Officer's Representative (SOR) for approval. The EMP should be reviewed regularly and updated, preferably on a monthly basis.</p> <p>A system should be devised to work for on-site sorting of excavated and C&D materials and promptly removing all sorted and process materials arising from the construction activities to minimize temporary stockpiling on-site. The system should be included in the EMP identifying the source of generation, estimated quantity, arrangement for on-site sorting, collection, temporary storage areas and frequency of collection by recycling Contractors or frequency of removal off-site.</p>	Work Site/During Design & Construction Period	√
6.47	5.10	<p><u>Chemical Waste</u></p> <p>Should chemical wastes be produced at the construction site, the Contractor would be required to register with EPD as a Chemical Waste Producer and to follow the guidelines stated in the Code of Practice on the Packaging, Labelling and Storage of Chemical Wastes. Good quality containers compatible with the chemical wastes should be used, and incompatible chemicals should be stored separately. Appropriate labels should be securely attached on each chemical waste container indicating the corresponding chemical characteristics of the chemical waste (such as explosive, flammable, oxidizing, irritant, toxic, harmful, or corrosive). The Contractor should employ a licensed collector to transport and dispose of the chemical wastes, to either the CWTC in Tsing Yi, or any other licensed facilities, in accordance with the Waste Disposal (Chemical Waste) General Regulation.</p>	Work Site / During Construction Period	<>
6.48	5.11	<p><u>General Refuse</u></p> <p>General refuse should be stored in enclosed bins or compaction units separated from C&D material. A licensed waste collector should be employed by the contractor to remove general refuse from the site, separately from C&D material. Preferably an enclosed and covered area should be provided to reduce the occurrence of 'wind blown' light material.</p>	Work Site / During Construction Period	<>
<i>E. Landscape and Visual</i>				
7.99 & Table 7.7	Table 6.1	<p><u>Construction Phase</u></p> <ul style="list-style-type: none"> • Topsoil, where identified, should be stripped and stored for re-use in the construction of the 	Work site/During Design & Construction Stages	√

EIA Ref.	EM&A Log Ref.	Environmental Protection Measures	Location/ Timing	Status
		soft landscape works, where practical <ul style="list-style-type: none"> • Compensatory tree planting should be provided to compensate for felled trees. <ul style="list-style-type: none"> - Compensation tree species shall be chosen from both indigenous and ornamental species - Compensatory tree planting quantities shall be as per DLO approved requirement. • Control of night-time lighting • Erection of decorative screen hoarding compatible with the surrounding setting 		
<i>F. Noise</i>				
8.25	7.3	Good Site Practice: <ul style="list-style-type: none"> • Only well-maintained plant should be operated on-site and plant should be serviced regularly during the construction program; • Mobile plant, if any, should be sited as far from noise sensitive receivers (NSRs) as possible; • Machines and plant (such as trucks) that may be in intermittent use should be shut down between work periods or should be throttled down to a minimum; • Plant known to emit noise strongly in one direction should, wherever possible, be orientated so that the noise is directed away from the nearby NSRs; and • Material stockpiles and other structures should be effectively utilized, wherever practicable, in screening noise from on-site construction activities. 	Work site/During Design & Construction Stages	√

Remark:

- √ Compliance of Mitigation Measures
- <> Compliance of Mitigation but need improvement
- x Non-compliance of Mitigation Measures
- ▲ Non-compliance of Mitigation Measures but rectified by OSCAR Bioenergy JV
- Δ Deficiency of Mitigation Measures but rectified by OSCAR Bioenergy JV
- N/A Not Applicable in Reporting Period

Annex F

Waste Flow Table

**No. EP/SP/61/10 of Organic Waste Treatment Facilities Phase I
Monthly Summary Waste Flow Table**

Month	Actual Quantities of Inert C&D Materials Generated					Actual Quantities of Non-inert C&D Materials (Construction Waste) Generated				
	Total Quantity Generated	Reused in the Contract	Reused in other Projects	Hard Rocks & Large Broken Concrete	Disposed as Public Fill	Metals (see Note 1)	Paper/ cardboard packaging (see Note 1)	Plastics (see Note 2)	Chemical Waste	Others, e.g. general refuse (see Note 3)
	tonne	tonne	tonne	tonne	tonne	kilogram	kilogram	kilogram	Litre	tonne
May 2015	29.58	0.00	0.00	0.00	29.58	0.00	0.00	0.00	0.00	0.00
June 2015	2226.90	0.00	0.00	0.00	2226.90	0.00	0.00	0.00	0.00	9.66
July 2015	2832.27	0.00	0.00	0.00	2832.27	0.00	0.00	0.00	0.00	33.68
August 2015	6657.25	0.00	0.00	0.00	6657.25	0.00	20.00	0.00	0.00	55.06
September 2015	5467.05	0.00	0.00	0.00	5467.05	3480.00	0.00	0.00	0.00	83.81
October 2015	5419.04	0.00	0.00	0.00	5419.04	18710.00	0.00	0.00	0.00	20.45
November 2015	1375.26	0.00	0.00	0.00	1375.26	21610.00	0.00	0.00	0.00	17.38
December 2015	2199.56	75.28	0.00	0.00	2124.28	0.00	41.00	0.00	0.00	21.83
January 2016	4601.43	0.00	0.00	0.00	4601.43	18140.00	50.00	0.00	640.00	20.86
February 2016	4167.01	0.00	0.00	0.00	4167.01	510.00	79.00	0.00	0.00	16.57
March 2016	299.92	41.28	0.00	0.00	258.64	22320.00	75.00	0.00	0.00	22.69
April 2016	3186.37	98.37	0.00	0.00	3088.00	60690.00	77.00	0.00	255.00	37.63
May 2016	1612.33	63.41	0.00	0.00	1548.92	13490.00	35000.00	0.00	0.00	40.76
June 2016	1144.73	30.43	0.00	0.00	1114.30	14600.00	120.00	0.00	0.00	58.34
July 2016	662.76	0.00	0.00	0.00	662.76	13370.00	0.00	0.00	0.00	40.48
August 2016	391.88	0.00	0.00	0.00	391.88	18660.00	84.00	0.00	0.00	61.91
September 2016	324.35	0.00	0.00	0.00	324.35	56800.00	2780.00	0.00	0.00	138.25
October 2016	1561.82	39.00	0.00	0.00	1522.82	40000	9.30	0.00	700.00	114.47
November 2016	897.23	507.94	00.00	0.00	389.76	0.00	123.00	0.00	0.00	154.22
December 2016	2477.95	489.00	0.00	0.00	1988.95	2960.00	93.00	0.00	0.00	136.80

Month	Actual Quantities of Inert C&D Materials Generated					Actual Quantities of Non-inert C&D Materials (Construction Waste) Generated				
	Total Quantity Generated	Reused in the Contract	Reused in other Projects	Hard Rocks & Large Broken Concrete	Disposed as Public Fill	Metals (see Note 1)	Paper/ cardboard packaging (see Note 1)	Plastics (see Note 2)	Chemical Waste	Others, e.g. general refuse (see Note 3)
	tonne	tonne	tonne	tonne	tonne	kilogram	kilogram	kilogram	Litre	tonne
January 2017	2150.92	503.60	0.00	0.00	1647.32	31240.00	21051.00	3630.00	0.00	127.43
February 2017	553.80 (See Note 4)	440.00	0.00	0.00	113.80	14940.00	18820.00	2880.00	460.00	83.46
Total	50256.79	2287.84	0.00	0.00	47968.95	351520.00	78422.30	6510.00	2055.00	1295.74

- Notes:
- (1) Metal and paper/cardboard packaging were collected by recycler for recycling.
 - (2) Plastics refer to plastic bottles/containers, plastic sheets/foam from packaging material collected by recycler for recycling.
 - (3) General refuse was disposed of at NENT by subcontractors.
 - (4) In total, 553.80 tonnes of inert C&D material were generated from the Project, of which the 113.8 tonnes were disposed as public fill to Fill Bank at Tuen Mun Area 38 in reporting period and the 440.00 tonnes were reused in this contract.

Annex G

Environmental Complaint,
Environmental Summons
and Persecution Log

Annex G Cumulative Complaint and Summons/Prosecutions Log

Reporting Month	Number of Complaints in Reporting Month	Number of Summons/Prosecutions in Reporting Month
May 2015	0	0
June 2015	0	0
July 2015	0	0
August 2015	0	0
September 2015	0	0
October 2015	0	0
November 2015	0	0
December 2015	0	0
January 2016	0	0
February 2016	0	0
March 2016	0	0
April 2016	0	0
May 2016	0	0
June 2016	0	0
July 2016	0	0
August 2016	0	0
September 2016	0	0
October 2016	0	0

Reporting Month	Number of Complaints in Reporting Month	Number of Summons/Prosecutions in Reporting Month
November 2016	0	0
December 2016	0	0
January 2017	0	0
February 2017	0	0
Overall Total	0	0