

OSCAR Bioenergy Joint Venture

Contract No. EP/SP/61/10  
Organic Resources Recovery  
Centre (Phase 1):  
*Eighty-eighth Monthly EM&A Report*

1 September 2022 – 30 September 2022

**Environmental Resources Management**

2509, 25/F, One Harbourfront,  
18 Tak Fung Street,  
Hung Hom, Kowloon, Hong Kong  
Telephone: (852) 2271 3000  
Facsimile: (852) 3015 8052  
E-mail: [post.hk@erm.com](mailto:post.hk@erm.com)  
<http://www.erm.com>

Meinhardt Infrastructure and Environment Limited

**Organic Resources Recovery Centre,  
Phase I**

Monthly EM&A Report  
(1 September 2022 – 30 September 2022)

(Nov 2022)

Verified by: Claudine Lee



---

Position: Independent Environmental Checker

---

Date: 7<sup>th</sup> Nov 2022

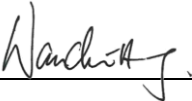

---

OSCAR Bioenergy Joint Venture

Contract No. EP/SP/61/10  
Organic Resources Recovery  
Centre (Phase 1):  
*Eighty-eighth Monthly EM&A Report*

1 September 2022 – 30 September 2022

Reference 0279222

For and on behalf of ERM-Hong Kong, Limited	
Approved by:	Frank Wan
Signed:	
Position:	Partner
Certified by:	
	(Environmental Team Leader - Mandy To)
Date:	13 October 2022

## CONTENTS

### EXECUTIVE SUMMARY

1	INTRODUCTION	1
1.1	PURPOSE OF THE REPORT	1
1.2	STRUCTURE OF THE REPORT	1
2	PROJECT INFORMATION	3
2.1	BACKGROUND	3
2.2	GENERAL SITE DESCRIPTION	4
2.3	MAJOR ACTIVITIES UNDERTAKEN	4
2.4	PROJECT ORGANISATION AND MANAGEMENT STRUCTURE	4
2.5	STATUS OF ENVIRONMENTAL APPROVAL DOCUMENTS	4
3	ENVIRONMENTAL MONITORING AND AUDIT REQUIREMENTS	6
3.1	ENVIRONMENTAL MONITORING	6
3.1.1	<i>Air Quality</i>	6
3.1.2	<i>Odour</i>	8
3.2	SITE AUDIT	10
3.2.1	<i>Water Quality</i>	10
3.2.2	<i>Landscape and Visual</i>	11
4	MONITORING RESULTS	13
4.1	AIR QUALITY	13
4.1.1	<i>Operation Phase Monitoring</i>	13
4.2	ODOUR	15
4.2.1	<i>Operation Phase Monitoring</i>	15
4.3	WATER QUALITY	15
4.3.1	<i>Operation Phase Monitoring</i>	15
4.4	WASTE MANAGEMENT	17
4.4.1	<i>Operation Phase Monitoring</i>	17
5	SITE AUDIT	18
5.1	ENVIRONMENTAL SITE AUDIT	18
5.1.1	<i>Operation Phase</i>	18
5.2	LANDSCAPE AND VISUAL AUDIT	18
6	ENVIRONMENTAL NON-CONFORMANCE AND DEFICIENCIES	19
6.1	SUMMARY OF ENVIRONMENTAL NON-COMPLIANCE AND DEFICIENCIES	19
6.2	SUMMARY OF ENVIRONMENTAL COMPLAINT	19
6.3	SUMMARY OF ENVIRONMENTAL SUMMON AND SUCCESSFUL PROSECUTION	19
7	FUTURE KEY ISSUES	20
7.1	KEY ISSUES FOR THE COMING MONTH	20

### LIST OF TABLES

<i>Table 2.1</i>	<i>Summary of Activities Undertaken in the Reporting Period</i>
<i>Table 2.2</i>	<i>Summary of Environmental Licensing, Notification and Permit Status</i>
<i>Table 3.1</i>	<i>Sampling and Laboratory Analysis Methodology</i>
<i>Table 3.2</i>	<i>Emission Limit for CAPCS Stack</i>
<i>Table 3.3</i>	<i>Emission Limit for CHP Stack</i>
<i>Table 3.4</i>	<i>Emission Limit for ASP Stack</i>
<i>Table 3.5</i>	<i>Odour Intensity Level</i>
<i>Table 3.6</i>	<i>Action and Limit Levels for Odour Nuisance</i>
<i>Table 3.7</i>	<i>Event and Action Plan for Odour Monitoring</i>
<i>Table 3.8</i>	<i>Discharge Limits for Effluent from the Outlet Chamber of the Effluent Storage Tank</i>
<i>Table 3.9</i>	<i>Discharge Limits for Effluent from the Petrol Interceptors</i>
<i>Table 4.1</i>	<i>Hourly Average of Parameters Recorded for CAPCS</i>
<i>Table 4.2</i>	<i>Hourly Average of Parameters Recorded for CHP 1</i>
<i>Table 4.3</i>	<i>Hourly Average of Parameters Recorded for CHP 2</i>
<i>Table 4.4</i>	<i>Hourly Average of Parameters Recorded for CHP 3</i>
<i>Table 4.5</i>	<i>Hourly Average of Parameters Recorded for ASP</i>
<i>Table 4.6</i>	<i>Results of the Discharge Sample from the Outlet Chamber of the Effluent Storage Tank</i>
<i>Table 4.7</i>	<i>Results of the Discharge Sample from the Petrol Interceptor 1</i>
<i>Table 4.8</i>	<i>Results of the Discharge Sample from the Petrol Interceptor 2</i>
<i>Table 4.9</i>	<i>Quantities of Waste Generated from the Operation of the Project</i>
<i>Table 8.1</i>	<i>Exceedances for Stack Emissions</i>

### LIST OF ANNEXES

<i>ANNEX A</i>	<i>LOCATION OF PROJECT</i>
<i>ANNEX B</i>	<i>PROJECT ORGANISATION CHART AND CONTACT DETAIL</i>
<i>ANNEX C</i>	<i>IMPLEMENTATION SCHEDULE OF MITIGATION MEASURES</i>
<i>ANNEX D</i>	<i>WASTE FLOW TABLE</i>
<i>ANNEX E</i>	<i>ENVIRONMENTAL COMPLAINT, ENVIRONMENTAL SUMMONS AND PROSECUTION LOG</i>
<i>ANNEX F</i>	<i>ODOUR PATROL RESULT</i>

## EXECUTIVE SUMMARY

The construction works of *No. EP/SP/61/10 Organic Resources Recovery Centre Phase 1 (the Project)* commenced on 21 May 2015. This is the 88<sup>th</sup> monthly Environmental Monitoring and Audit (EM&A) report presenting the EM&A works carried out during the period from 1 to 30 September 2022 in accordance with the EM&A Manual. Substantial completion of the construction works was confirmed on 3 December 2018. In the meantime, the operation phase EM&A programme had commenced in March 2019. Substantial Completion in respect of substantial part of the Works was confirmed on 24 February 2020. The construction phase EM&A programme was completed in the end of February 2020.

### **Summary of Works undertaken during the Reporting Month**

Works undertaken in the reporting month included:

- Operation of the Project, including organic waste reception, and operation of the pre-treatment facilities, anaerobic digesters, composting facilities, air pollution control systems, on-line emission monitoring system for the Centralised Air Pollution Control Unit (CAPCS), Co-generation Units (CHP)s and Ammonia Stripping Plant (ASP), and the wastewater treatment plant;
- In September, E50 Service for CHP 2 (overhaul works) was completed with testing and commissioning.
- Emergency repair works for the ECU (heat exchanger) for the ASP was conducted; and
- Four points calibration and adjustment was conducted for the CEMS.

### **Environmental Monitoring and Audit Progress**

#### *Air Quality Monitoring*

No non-compliance to the emission limit was recorded during this reporting period.

#### *Water Quality*

No non-compliance to the effluent discharge limit stipulated in the discharge licence issued by the EPD under the *Water Pollution Control Ordinance* was recorded during this reporting period.

#### *Waste Management*

Waste generated from the operation of the Project includes chemical waste, waste generated from pre-treatment process and general refuse.

No chemical waste was collected by licenced waste collector from the operation of the Project.

476.92 tonnes of waste generated from pre-treatment process from the operation of the Project was disposed of at landfill. Among the recyclable waste generated from pre-treatment process from the operation of the Project, 0.00 tonne of metals, 0.00 tonnes of papers/ cardboard packing and 0.00 tonne of plastics were sent to recyclers for recycling during the reporting period.

Around 2.42 tonnes of general refuse from the operation of the Project was disposed of at landfill. Among the recycled general refuse from the operation of the Project, 0.00 tonne of metals, 0.00 tonne of papers/ cardboard packing and 0.00 tonne of plastics were sent to recyclers for recycling during the reporting period.

### **Findings of Environmental Site Audit**

A summary of the monitoring activities undertaken in this reporting period is listed below:

- Joint Environmental Site Inspections 1 time

1 monthly joint environmental site inspection was carried out by the representatives of the Contractor and the MT. The IEC was also present at the joint inspections on 27 September 2022. The environmental control/mitigation measures (related to air quality, water quality, waste (including land contamination prevention), hazard-to-life and landscape and visual) recommended in the approved EIA Report and the EM&A Manual were properly implemented by the Contractor during the reporting month.

### **Environmental Exceedance/Non-conformance/Compliant/Summons and Prosecution**

Exceedances for the air emission limits for the CHP and ASP stacks were recorded during the reporting period.

No complaint/ summon/prosecution was received in this reporting period.

### **Future Key Issues**

Activities to be undertaken in the next reporting month include:

- Operation of the Project; and
- Steam Generator tube bundle replacement and ECU cassette replacement for the ASP with anticipated ten days shutdown.

ERM-Hong Kong, Limited (ERM) was appointed by OSCAR Bioenergy Joint Venture (the Contractor) as the Environmental Team (ET) to undertake the construction Environmental Monitoring and Audit (EM&A) programme for the *Contract No. EP/SP/61/10 of Organic Waste Treatment Facilities Phase I*, which the project name has been updated to *Organic Resources Recovery Centre (Phase I) (the Project)* since November 2017. ERM was also appointed by the Contractor to undertake the operation EM&A programme starting 1 March 2019.

### **1.1 PURPOSE OF THE REPORT**

This is the 88<sup>th</sup> EM&A report which summarises the monitoring results and audit findings for the EM&A programme during the reporting period from 1 to 30 September 2022.

### **1.2 STRUCTURE OF THE REPORT**

The structure of the report is as follows:

#### **Section 1: Introduction**

It details the scope and structure of the report.

#### **Section 2: Project Information**

It summarises the background and scope of the Project, site description, project organisation and status of the Environmental Permits (EP)/licences.

#### **Section 3: Environmental Monitoring and Audit Requirements**

It summarises the environmental monitoring requirements including monitoring parameters, programmes, methodologies, frequency, locations, Action and Limit Levels, Event/ Action Plans, as well as environmental audit requirements as recommended in the EM&A Manual and approved EIA report.

#### **Section 4: Monitoring Results**

It summarises monitoring results of the reporting period.

#### **Section 5: Site Audit**

It summarises the audit findings of the environmental as well as landscape and visual site audits undertaken within the reporting period.

#### **Section 6: Environmental Non-conformance**

It summarises any exceedance of environmental performance standard, environmental complaints and summons received within the reporting period.



***Section 7: Further Key Issues***

It summarises the impact forecast for the next reporting month.

***Section 8: Conclusions***

## 2.1

## BACKGROUND

The Organic Resources Recovery Centre (ORRC) Phase I development (hereinafter referred to as “the Project”) is to design, construct and operate a biological treatment facility with a capacity of about 200 tonnes per day and convert source-separated organic waste from commercial and industrial sectors (mostly food waste) into compost and biogas through proven biological treatment technologies. The location of the Project site is shown in *Annex A*.

The environmental acceptability of the construction and operation of the Project had been confirmed by findings of the associated Environmental Impact Assessment (EIA) Study completed in 2009. The Director of Environmental Protection (DEP) approved this EIA Report under the *Environmental Impact Assessment Ordinance* (EIAO) (Cap. 499) in February 2010 (Register No.: AEIAR-149/2010) (hereafter referred to as the approved EIA Report). Subsequent Report on Re-assessment on Environmental Implications and Report on Re-assessment on Hazard to Life Implications were completed in 2013, respectively.

An Environmental Permit (EP) (No. EP-395/2010) was issued by the DEP to the EPD (Project Team), the Permit Holder, on 21 June 2010 and varied on 18 March 2013 (No. EP-395/2010/A) and 21 May 2013 (No. EP-395/2010/B), respectively. The Design Build and Operate Contract for the ORRC Phase 1 (Contract No. EP/SP/61/10 Organic Resources Recovery Centre (Phase 1) (the Contract)) was awarded to SITA Waste Services Limited, ATAL Engineering Limited and Ros-Roca, Sociedad Anonima jointly trading as the OSCAR Bioenergy Joint Venture (OSCAR or the Contractor). A Further EP (No. FEP-01/395/2010/B) was issued by the DEP to the OSCAR on 16 February 2015. Variation to both EPs (Nos. EP-395/2010/B and FEP-01/395/2010/B) were made in December 2015. The latest EPs, Nos. EP-395/2010/C and FEP-01/395/2010/C, were issued by the DEP on 21 December 2015.

Under the requirements of Condition 5 of the EP (No. FEP-01/395/2010/C), an Environmental Monitoring and Audit (EM&A) programme as set out in the approved EM&A Manual (hereinafter referred to as EM&A Manual) is required to be implemented during the construction and operation of the Project. ERM-Hong Kong, Ltd (ERM) has been appointed by OSCAR as the Environmental Team (ET) for the construction phase EM&A programme and the Monitoring Team (MT) for the operation phase EM&A programme for the implementation of the EM&A programme in accordance with the requirements of the EP and the approved EM&A Manual.

The construction works commenced on 21 May 2015. The construction phase EM&A programme was completed in the end of February 2020. The

operation phase of the EM&A programme commenced on 1 March 2019 <sup>(1)</sup>.

## 2.2 GENERAL SITE DESCRIPTION

The Project Site is located at Siu Ho Wan in North Lantau with an area of about 2 hectares. The layout of the Project Site is illustrated in *Annex A*. The facility received an average of 139.33 tonnes and treated an average of 123.43 tonnes of source separated organic waste per day during the reporting month.

## 2.3 MAJOR ACTIVITIES UNDERTAKEN

A summary of the major activities undertaken in the reporting period is shown in *Table 2.1*.

**Table 2.1 Summary of Activities Undertaken in the Reporting Period**

Activities Undertaken in the Reporting Period
<ul style="list-style-type: none"> <li>Systems being operated – waste reception, pre-treatment, CAPCS extraction, the digesters, the centrifuge, the composting tunnels, the de-sulphurisation, the emergency flare, the CHPs, the ASP and the biological waste water treatment plant (139.33 t/d SSOW received);</li> <li>In September, E50 Service for CHP 2 (overhaul works) was completed with testing and commissioning;</li> <li>Emergency repair works for the ECU (heat exchanger) for the ASP was conducted; and</li> <li>Four points calibration and adjustment was conducted for the CEMS.</li> </ul>

## 2.4 PROJECT ORGANISATION AND MANAGEMENT STRUCTURE

The project organisation chart and contact details are shown in *Annex B*.

## 2.5 STATUS OF ENVIRONMENTAL APPROVAL DOCUMENTS

A summary of the valid permits, licences, and/or notifications on environmental protection for this Project is presented in *Table 2.2*.

**Table 2.2 Summary of Environmental Licensing, Notification and Permit Status**

Permit/ Licences/ Notification	Reference	Validity Period	Remarks
Environmental Permit	FEP-01/395/2010/C	Throughout the Contract	Permit granted on 21 December 2015
Effluent Discharge Licence	WT00038391-2021	7 July 2021 – 30 June 2026	Approved on 7 July 2021
Chemical Waste Producer Registration	WPN 5213-961-O2231-02	Throughout the implementation of the Project	Approved on 10 November 2017

(1) As some of the minor items are yet to be closed out in March 2019, the construction phase EM&A programme and Operation Phase EM&A programme were undertaking in parallel in March 2019.

<b>Permit/ Licences/ Notification</b>	<b>Reference</b>	<b>Validity Period</b>	<b>Remarks</b>
Waste Disposal Billing Account	Account number: 702310	Throughout the Contract	-

### 3.1 ENVIRONMENTAL MONITORING

The air quality (including odour) monitoring to be carried out during the commissioning and operation phase of the Project are described below. Although water quality monitoring is not required for the operation phase under the EM&A programme, there are water quality monitoring requirement under the Water Discharge Licence of the plant under the *Water Pollution Control Ordinance* (WPCO). As part of this EM&A programme, the monitoring results will be reviewed to check the compliance with the WPCO requirements.

#### 3.1.1 Air Quality

According to the EM&A Manual and EP requirements, stack monitoring are required during the commissioning and operation phase of the Project.

On-line monitoring (using continuous environmental monitoring system (CEMS)) shall be carried out for the centralised air pollution unit (CAPCS), cogeneration units (CHP) and the ammonia stripping plant (ASP) during the commissioning and operation phase. The last calibration was carried out in September 2021.

The monitoring data is transmitted instantaneously to EPD (Regional Office) by telemetry system.

When the on-line monitoring for certain parameter cannot be undertaken, monitoring will be carried out using the following methodology approved by the EPD.

**Table 3.1 Sampling and Laboratory Analysis Methodology**

Parameters	Method	Stacks to be Monitored
Gaseous and vaporous organic substances (including methane)	USEPA Method 18	<ul style="list-style-type: none"> <li>• CAPCS</li> <li>• CHP</li> <li>• ASP</li> </ul>
Particulate	USEPA Method 5	<ul style="list-style-type: none"> <li>• CAPCS</li> <li>• CHP</li> <li>• ASP</li> </ul>
Carbon monoxide (CO)	USEPA Method 10	<ul style="list-style-type: none"> <li>• CHP</li> <li>• ASP</li> </ul>
Nitrogen oxides (NO <sub>x</sub> )	USEPA Method 7E	<ul style="list-style-type: none"> <li>• CHP</li> <li>• ASP</li> </ul>
Sulphur dioxide (SO <sub>2</sub> );	USEPA Method 6	<ul style="list-style-type: none"> <li>• CHP</li> <li>• ASP</li> </ul>
Hydrogen chloride (HCl)	USEPA Method 26A	<ul style="list-style-type: none"> <li>• CHP</li> <li>• ASP</li> </ul>

Parameters	Method	Stacks to be Monitored
Hydrogen fluoride (HF)	USEPA Method 26A	<ul style="list-style-type: none"> <li>• CHP</li> <li>• ASP</li> </ul>
Oxygen (O <sub>2</sub> );	USEPA Method 3A	<ul style="list-style-type: none"> <li>• CAPCS</li> <li>• CHP</li> <li>• ASP</li> </ul>
Velocity and Volumetric Flow	USEPA Method 2	<ul style="list-style-type: none"> <li>• CAPCS</li> <li>• CHP</li> <li>• ASP</li> </ul>
Ammonia (NH <sub>3</sub> )	USEPA CTM 027	<ul style="list-style-type: none"> <li>• ASP</li> </ul>
Odour (including NH <sub>3</sub> and H <sub>2</sub> S)	EN 13725	<ul style="list-style-type: none"> <li>• CAPCS</li> </ul>
Water vapour content (continuous measurement of the water vapour content should not be required if the sample exhaust gas is dried before the emissions are analysed)	USEPA Method 4	<ul style="list-style-type: none"> <li>• CAPCS</li> <li>• CHP</li> <li>• ASP</li> </ul>
Temperature	USEPA Method 4	<ul style="list-style-type: none"> <li>• CAPCS</li> <li>• CHP</li> <li>• ASP</li> </ul>

With reference to the EM&A Manual, the air emission of the stacks shall meet the following emission limits as presented in *Tables 3.2 to 3.4*.

**Table 3.2** *Emission Limit for CAPCS Stack*

Parameter	Emission Level (mg/Nm <sup>3</sup> ) <sup>(a)</sup>
VOCs (including methane)	680
Dust (or Total Suspended Particulates (TSP))	6
Odour (including NH <sub>3</sub> & H <sub>2</sub> S)	220 <sup>(b)</sup>
<b>Notes:</b>	
(a) Hourly average concentration	
(b) The odour unit is OU/Nm <sup>3</sup>	

**Table 3.3** *Emission Limit for CHP Stack*

Parameter	Maximum Emission Level (mg/Nm <sup>3</sup> ) <sup>(a) (b)</sup>
Dust (or Total Suspended Particulates)	15
Carbon Monoxide	650
NO <sub>x</sub>	300
SO <sub>2</sub>	50
NMVOCs <sup>(c)</sup>	150
VOCs (including methane) <sup>(d)</sup>	1,500
HCl	10
HF	1
<b>Notes:</b>	
(a) All values refer to an oxygen content in the exhaust gas of 6% and dry basis.	
(b) Hourly average concentration	
(c) NMVOCs should be monitored by gas sampling and laboratory analysis at an agreed interval. For the first 12 months (starting from August 2019), monitoring should be carried out at quarterly intervals. The monitoring frequency should then be reduced to	

Parameter	Maximum Emission Level (mg/Nm <sup>3</sup> ) (a) (b)
half-yearly for next 12 months (starting from August 2020). The monitoring of NMVOCs ended in August 2021.	
(d) The VOCs emission limit include methane as biogas is adopted as fuel in the combustion process.	

**Table 3.4** *Emission Limit for ASP Stack*

Parameter	Maximum Emission Level (mg/Nm <sup>3</sup> ) (a) (b)
Dust (or Total Suspended Particulates)	5
Carbon Monoxide	100
NO <sub>x</sub>	200
SO <sub>2</sub>	50
VOCs (including methane) (c)	20
NH <sub>3</sub>	35
HCl	10
HF	1

**Notes:**

(a) All values refer to an oxygen content in the exhaust gas of 11% and dry basis.

(b) Hourly average concentration

(c) The VOCs emission limit include methane as biogas is adopted as fuel in the combustion process.

### 3.1.2 *Odour*

To determine the effectiveness of the proposed odour mitigation measures and to ensure that the operation of the ORRC1 will not cause adverse odour impacts, odour monitoring of the CAPCS stack (see *Section 3.1.1*) and odour patrol will be carried out.

Odour patrol shall be conducted by independent trained personnel/ competent persons in summer months (i.e. from July to September) for the first two operational years of ORRC1 at monthly intervals along an odour patrol route at the Project Site boundary as shown in *Annex A*<sup>(2)</sup>.

The perceived odour intensity is divided into 5 levels. *Table 3.5* describes the odour intensity for different levels.

**Table 3.5** *Odour Intensity Level*

Level	Odour Intensity
0	Not detected. No odour perceived or an odour so weak that it cannot be easily characterised or described
1	Slight identifiable odour, and slight chance to have odour nuisance
2	Moderate identifiable odour, and moderate chance to have odour nuisance
3	Strong identifiable, likely to have odour nuisance
4	Extreme severe odour, and unacceptable odour level

(2) The odour patrol route was changed during this reporting period to include sampling points that are frequently visited by visitors and eliminate sampling points that are not visited by visitors.

Table 3.6 shows the action level and limit level to be used for odour patrol. Should any exceedance of the action and limit levels occurs, actions in accordance with the event and action plan in Table 3.7 should be carried out.

**Table 3.6** *Action and Limit Levels for Odour Nuisance*

Parameter	Action Level	Limit Level
Odour Nuisance (from odour patrol)	When one documented compliant is received <sup>(a)</sup> , or Odour Intensity of 2 is measured from odour patrol.	Two or more documented complaints are received <sup>(a)</sup> within a week; or Odour intensity of 3 or above is measured from odour patrol.
<b>Note:</b>		
(a) Once the complaint is received by the Project Proponent (EPD), the Project Proponent would investigate and verify the complaint whether it is related to the potential odour emission from the ORRC1 and its on-site wastewater treatment unit.		

**Table 3.7** *Event and Action Plan for Odour Monitoring*

Event	Action	
	Person-in-charge of Odour Monitoring	Project Proponent <sup>(a)</sup>
Action Level		
Exceedance of action level (Odour Patrol)	<ol style="list-style-type: none"> <li>1. Identify source/reason of exceedance;</li> <li>2. Repeat odour patrol to confirm finding.</li> </ol>	<ol style="list-style-type: none"> <li>1. Carry out investigation to identify the source/reason of exceedance. Investigation should be completed within 2 weeks;</li> <li>2. Rectify any unacceptable practice;</li> <li>3. Implement more mitigation measures if necessary;</li> <li>4. Inform Drainage Services Department (DSD) or the operator of the Siu Ho Wan Sewage Treatment Works (SHWSTW) if exceedance is considered to be caused by the operation of the SHWSTW.</li> <li>5. Inform North Lantau Refuse Transfer Station (NLTS) operator if exceedance is considered to be caused by the operation of NLTS.</li> </ol>



Event	Action	
	Person-in-charge of Odour Monitoring	Project Proponent <sup>(a)</sup>
Exceedance of action level (Odour Complaints)	<ol style="list-style-type: none"> <li>1. Identify source/reason of exceedance;</li> <li>2. Carry out odour patrol to determinate odour intensity.</li> </ol>	<ol style="list-style-type: none"> <li>1. Carry out investigation and verify the complaint whether it is related to potential odour emission from the nearby SHWSTW;</li> <li>2. Carry out investigation to identify the source/reason of exceedance. Investigation should be completed within 2 weeks;</li> <li>3. Rectify any unacceptable practice;</li> <li>4. Implement more mitigation measures if necessary;</li> <li>5. Inform DSD or the operator of the SHWSTW if exceedance is considered to be caused by the operation of the SHWSTW.</li> <li>6. Inform NLTS operator if exceedance is considered to be caused by the operation of NLTS.</li> </ol>
<b>Limit Level</b>		
Exceedance of limit level	<ol style="list-style-type: none"> <li>1. Identify source/reason of exceedance;</li> <li>2. Inform EPD;</li> <li>3. Repeat odour patrol to confirm findings;</li> <li>4. Increase odour patrol frequency to bi-weekly;</li> <li>5. Assess effectiveness of remedial action and keep EPD informed of the results;</li> <li>6. If exceedance stops, cease additional odour patrol.</li> </ol>	<ol style="list-style-type: none"> <li>1. Carry out investigation to identify the source/reason of exceedance. Investigation should be completed within 2 week;</li> <li>2. Rectify any unacceptable practice;</li> <li>3. Formulate remedial actions;</li> <li>4. Ensure remedial actions properly implemented;</li> <li>5. If exceedance continues, consider what more/enhanced mitigation measures should be implemented;</li> <li>6. Inform DSD or the operator of the SHWSTW if exceedance is considered to be caused by the operation of the SHWSTW.</li> </ol>
<b>Note:</b>		
(a) Project Proponent shall identify an implementation agent.		

## 3.2

### SITE AUDIT

Environmental mitigation measures (related to air quality, water quality, waste, land contamination, hazard-to-life, and landscape and visual) to be implemented during the operation phase of the Project are recommended in the approved EIA Report and EM&A Manual and are summarised in *Annex C*. Monthly site audits for operation phase will be carried out to check the implementation of these measures.

#### 3.2.1

##### Water Quality

Compliance audits are to be undertaken to ensure that a valid discharge licence has been issued by EPD prior to the discharge of effluent from the operation of the Project site. The audit shall be conducted to ensure that the

effluent quality is in compliance with the discharge licence requirements. As stipulated in the operation phase discharge licence, effluent discharge are to be sampled monthly from the outlet chamber of the Effluent Storage Tank, while effluent discharge are to be sampled bi-monthly from the Petrol Interceptors. The effluent quality shall meet the discharge limits as described in *Table 3.8* and *Table 3.9*.

**Table 3.8** *Discharge Limits for Effluent from the Outlet Chamber of the Effluent Storage Tank*

Parameters	Discharge Limit (mg/L)
Flow Rate (m <sup>3</sup> /day) <sup>(a)</sup>	645
pH (pH units) <sup>(b)</sup>	6-10 <sup>(c)</sup>
Suspended Solids <sup>(b)</sup>	800
Biochemical Oxygen Demand (5 days, 20°) <sup>(b)</sup>	800
Chemical Oxygen Demand <sup>(b)</sup>	2,000
Oil & Grease <sup>(b)</sup>	40
Total Nitrogen <sup>(b)</sup>	200
Total Phosphorus <sup>(b)</sup>	50
Surfactants (total) <sup>(b)</sup>	25

**Notes:**

- (a) Flow rate is not a parameter required to be monitored and reported by the Contractor in accordance to Section B2 of the Effluent Discharge Licence under the WPCO.
- (b) Parameters required to be monitored and reported by the Contractor in accordance to Section B2 of the Effluent Discharge Licence under the WPCO.
- (c) Range.

**Table 3.9** *Discharge Limits for Effluent from the Petrol Interceptors*

Parameters	Discharge Limit (mg/L)
Flow Rate (m <sup>3</sup> /day)	245 <sup>(a)</sup>
Suspended Solids <sup>(b)</sup>	30
Chemical Oxygen Demand <sup>(c)</sup>	80
Oil & Grease <sup>(c)</sup>	20
Surfactants (total) <sup>(b)</sup>	15

**Notes:**

- (a) The surface runoff flow rate limit was estimated by the overall yearly rainfall data. As the actual flowrate from the petrol interceptors depends on the weather condition instead of the performance of the petrol interceptor, monitoring and reporting of this parameter is not required. Hence this parameter is not reported in *Table 4.7* and *Table 4.8*.
- (b) Parameter not required to be reported in accordance to Section B2 of the Effluent Discharge Licence under the WPCO.
- (c) Parameters required to be reported in accordance to Section B2 of the Effluent Discharge Licence under the WPCO.

### 3.2.2 *Landscape and Visual*

In accordance with EM&A Manual, the landscape and visual mitigation measures shall be implemented.

For operation phase, site inspection shall be conducted once a month for the first year of operation of the Project. All measures as stated in the implementation schedule of the EM&A Manual (see *Annex C*), including compensatory planting, undertaken by both the Contractor and the specialist Landscape Sub-Contractor during the first year of the operation phase shall be audited by a Registered Landscape Architect (RLA) to ensure compliance with the intended aims of the measures and the effectiveness of the mitigation measures. After the one-year maintenance period, the landscape maintenance and monitoring shall be carried out by the Contractor.

## 4.1 AIR QUALITY

## 4.1.1 Operation Phase Monitoring

The concentrations of concerned air pollutants emitted from the stacks of the CAPCS, CHP, and ASP during the reporting period are monitored on-line by the continuous environmental monitoring system (CEMS). During the reporting period, the standby flare was not in operation and no monitoring of the flare stack was undertaken.

With reference to the emission limits shown in *Tables 3.2, 3.3 and 3.4*, the hourly average concentrations and the number of exceedances of the concerned air emissions monitored for the CAPCS, CHP and ASP during this reporting period are presented in *Tables 4.1 to 4.5*.

It should be noted that measurements recorded under abnormal operating conditions, e.g. start up and stopping of stacks, unstable operation, test runs and interference of sensor, are disregarded.

**Table 4.1** *Hourly Average of Parameters Recorded for CAPCS*

Parameter	Range of Hourly Average Conc. (mg/Nm <sup>3</sup> )	Emission Limit (mg/Nm <sup>3</sup> )	Exceedance Identified	Remarks
VOCs (including methane)	0.00 - 0.00	680	Nil	Nil
Dust (or TSP)	0.00 - 0.05	6	Nil	Nil
Odour (including NH <sub>3</sub> & H <sub>2</sub> S) <sup>(a)</sup>	0.00 - 193.58	220	Nil	Nil

**Note:**  
(a) The odour unit is OU/Nm<sup>3</sup>.

**Table 4.2** *Hourly Average of Parameters Recorded for CHP 1*

Parameter	Range of Hourly Average Conc. (mg/Nm <sup>3</sup> ) <sup>(a)</sup>	Max. Emission Limit (mg/Nm <sup>3</sup> )	Exceedance Identified	Remarks
Dust (or TSP)	0 - 4	15	Nil	Nil
Carbon Monoxide	0 - 113	650	Nil	Nil
NO <sub>x</sub>	0 - 300	300	Nil	Nil
SO <sub>2</sub>	0 - 50	50	Nil	Nil
VOCs (including methane) <sup>(b)</sup>	0 - 827	1,500	Nil	Nil
HCl	0 - 7	10	Nil	Nil
HF	0 - 0	1	Nil	Nil

**Notes:**  
(a) All values refer to an oxygen content in the exhaust gas of 6% and dry basis.  
(b) The VOCs emission limit include methane as biogas is adopted as fuel in the combustion process.

**Table 4.3** *Hourly Average of Parameters Recorded for CHP 2*

Parameter	Range of Hourly Average Conc. (mg/Nm <sup>3</sup> ) <sup>(a)</sup>	Max. Emission Limit (mg/Nm <sup>3</sup> )	Exceedance Identified	Remarks
Dust (or TSP)	0 - 3	15	Nil	Nil
Carbon Monoxide	0 - 99	650	Nil	Nil
NO <sub>x</sub>	0 - 299	300	Nil	Nil
SO <sub>2</sub>	0 - 50	50	Nil	Nil
VOCs (including methane) <sup>(b)</sup>	0 - 903	1,500	Nil	Nil
HCl	0 - 5	10	Nil	Nil
HF	0 - 0	1	Nil	Nil

**Notes:**

- (a) All values refer to an oxygen content in the exhaust gas of 6% and dry basis.
- (b) The VOCs emission limit include methane as biogas is adopted as fuel in the combustion process.

**Table 4.4** *Hourly Average of Parameters Recorded for CHP 3*

Parameter	Range of Hourly Average Conc. (mg/Nm <sup>3</sup> ) <sup>(a)</sup>	Max. Emission Limit (mg/Nm <sup>3</sup> )	Exceedances Identified	Remarks
Dust (or TSP)	0 - 6	15	Nil	Nil
Carbon Monoxide	0 - 230	650	Nil	Nil
NO <sub>x</sub>	0 - 300	300	Nil	Nil
SO <sub>2</sub>	0 - 50	50	Nil	Nil
VOCs (including methane) <sup>(b)</sup>	0 - 814	1,500	Nil	Nil
HCl	0 - 5	10	Nil	Nil
HF	0 - 1	1	Nil	Nil

**Notes:**

- (a) All values refer to an oxygen content in the exhaust gas of 6% and dry basis.
- (b) The VOCs emission limit include methane as biogas is adopted as fuel in the combustion process.

**Table 4.5** *Hourly Average of Parameters Recorded for ASP*

Parameter	Range of Hourly Average Conc. (mg/Nm <sup>3</sup> ) <sup>(a)</sup>	Max. Emission Limit (mg/Nm <sup>3</sup> )	Exceedances Identified	Remarks
Dust (or TSP)	0 - 5	5	Nil	Nil
Carbon Monoxide	0 - 79	100	Nil <sup>(c)</sup>	Nil
NO <sub>x</sub>	0 - 200	200	Nil	Nil
SO <sub>2</sub>	0 - 42	50	Nil	Nil
VOCs (including methane) <sup>(b)</sup>	0 - 7	20	Nil	Nil
NH <sub>3</sub>	0 - 35	35	Nil	Nil
HCl	0 - 7	10	Nil	Nil
HF	0 - 1	1	Nil	Nil

Parameter	Range of Hourly Average Conc. (mg/Nm <sup>3</sup> ) <sup>(a)</sup>	Max. Emission Limit (mg/Nm <sup>3</sup> )	Exceedances Identified	Remarks
<b>Notes:</b>				
(a) All values refer to an oxygen content in the exhaust gas of 11% and dry basis.				
(b) The VOCs emission limit include methane as biogas is adopted as fuel in the combustion process.				

## 4.2 ODOUR

### 4.2.1 Operation Phase Monitoring

Odour patrol was conducted by the independent odour patrol team of ALS Technichem (HK) Pty Ltd on 9 and 22 September 2022. According to the EM&A Manual and EP requirements, it is considered an exceedance if the odour intensity recorded by the panellists is Level 2 or above. During this reporting period, no Level 2 Odour Intensity was recorded. The odour patrol result is shown in Annex G.

## 4.3 WATER QUALITY

### 4.3.1 Operation Phase Monitoring

Effluent discharge was sampled from the outlet chamber of the Effluent Storage Tank monthly and from the Petrol Interceptor(s) bi-monthly as stipulated in the operation phase discharge licence. The results of the discharge samples from the outlet chamber of the Effluent Storage Tank are recorded in *Table 4.6* and the results from the Petrol Interceptors are recorded in *Tables 4.7 - 4.8*.

**Table 4.6 Results of the Discharge Sample from the Outlet Chamber of the Effluent Storage Tank**

Parameters	Discharged Effluent Concentration (mg/L)	Discharge Limit (mg/L)	Compliance with Discharge Limit
Flow Rate (m <sup>3</sup> /day) <sup>(a)</sup>	0 - 228 <sup>(e)</sup>	645	Yes
pH (pH units) <sup>(b)</sup>	7.64 - 8.04 <sup>(e)</sup>	6-10 <sup>(c)</sup>	Yes
Suspended Solids <sup>(b) (d)</sup>	114 <sup>(d)</sup>	800	Yes
Biochemical Oxygen Demand (5 days, 20°) <sup>(b) (d)</sup>	65 <sup>(d)</sup>	800	Yes
Chemical Oxygen Demand <sup>(b) (d)</sup>	775 <sup>(d)</sup>	2,000	Yes
Oil & Grease <sup>(b) (d)</sup>	<5 <sup>(d)</sup>	40	Yes
Total Nitrogen <sup>(b) (d)</sup>	102 <sup>(d)</sup>	200	Yes
Total Phosphorus <sup>(b) (d)</sup>	34.2 <sup>(d)</sup>	50	Yes
Surfactants (total) <sup>(b) (d)</sup>	1.4 <sup>(d)</sup>	25	Yes

**Notes:**

- (a) Parameter not required to be reported in accordance to Section B2 of the Effluent Discharge Licence under the WPCO.
- (b) Parameters required to be reported in accordance to Section B2 of the Effluent Discharge Licence under the WPCO.
- (c) Daily Range.
- (d) Effluent sample collected on 8 September 2022.
- (e) Data collected daily.

**Table 4.7 Results of the Discharge Sample from the Petrol Interceptor 1**

Parameters	Discharged Effluent Concentration (mg/L)	Discharge Limit (mg/L)	Compliance with Discharge Limit
Suspended Solids <sup>(b)</sup>	- <sup>(a)</sup>	30	Yes
Chemical Oxygen Demand <sup>(c)</sup>	- <sup>(a)</sup>	80	Yes
Oil & Grease <sup>(c)</sup>	- <sup>(a)</sup>	20	Yes
Surfactants (total) <sup>(b)</sup>	- <sup>(a)</sup>	15	Yes

**Notes:**

- (a) No sampling was required in September 2022.
- (b) Parameter not required to be reported in accordance to Section B2 of the Effluent Discharge Licence under the WPCO.
- (c) Parameters required to be reported in accordance to Section B2 of the Effluent Discharge Licence under the WPCO.

**Table 4.8 Results of the Discharge Sample from the Petrol Interceptor 2**

Parameters	Discharged Effluent Concentration (mg/L)	Discharge Limit (mg/L)	Compliance with Discharge Limit
Suspended Solids <sup>(b)</sup>	6 <sup>(a)</sup>	30	Yes
Chemical Oxygen Demand <sup>(c)</sup>	36 <sup>(a)</sup>	80	Yes
Oil & Grease <sup>(c)</sup>	<5 <sup>(a)</sup>	20	Yes
Surfactants (total) <sup>(b)</sup>	<1.0 <sup>(a)</sup>	15	Yes

**Notes:**

- (a) Supplementary results for last reporting period (August 2022). Sample collected on 1 September 2022.
- (b) Parameter not required to be reported in accordance to Section B2 of the Effluent Discharge Licence under the WPCO.
- (c) Parameters required to be reported in accordance to Section B2 of the Effluent Discharge Licence under the WPCO.

**4.4 WASTE MANAGEMENT**

**4.4.1 Operation Phase Monitoring**

Wastes generated from the operation of the Project include chemical waste, wastes generated from pre-treatment process and general refuse <sup>(3)</sup>. Reference has been made to the Monthly Summary Waste Flow Table prepared by the Contractor (see *Annex D*). With reference to the relevant handling records and trip tickets of this Project, the quantities of different types of waste generated from the operation of the Project in the reporting month are summarised in *Table 4.9*.

**Table 4.9 Quantities of Waste Generated from the Operation of the Project**

Month / Year	Chemical Waste Disposal of at CWTC	Waste Generated from Pre-treatment Process		General Refuse	
		Disposed of at Landfill <sup>(a)</sup>	Recycled <sup>(b)</sup>	Disposed of at Landfill <sup>(a)</sup>	Recycled <sup>(c)</sup>
September 2022	0 L <sup>(d)</sup>	476.92 tonnes	0 tonnes	2.42 tonnes <sup>(e)</sup>	0.00 tonne

**Notes:**

- (a) Waste generated from pre-treatment process and general refuse other than chemical waste and recyclables were disposed of at NENT Landfill by sub-contractors.
- (b) Among waste generated from pre-treatment process, 0.00 tonne of metals, 0.00 tonnes of papers/ cardboard packing and 0.00 tonne of plastics were sent to recyclers for recycling during the reporting period.
- (c) Among general refuse, 0.00 kg of metals, 0.00 kg of papers/ cardboard packing and 0.00 kg of plastics were sent to recyclers for recycling during the reporting period.
- (d) No chemical waste was disposed of at CWTC in September 2022.
- (e) It was assumed that four 240-litre bins filled with 80% of general refuse were collected at each collection. The general refuse density was assumed to be around 0.15 kg/L.

(3) Public fill and construction waste may only be generated during maintenance works when there are civil or structural works.



## 5 *SITE AUDIT*

### 5.1 *ENVIRONMENTAL SITE AUDIT*

#### 5.1.1 *Operation Phase*

The monthly inspection for the operation phase of the Project on 27 September 2022 covered the operation phase environmental site audit. Joint site inspection was conducted by representatives of the Contractor, IEC, and the MT on 27 September 2022 as required for the operation of the Project.

The audits checked the implementation of the recommended mitigation measures for air quality, landscape and visual, water quality, waste (land contamination) and hazard-to-life stated in the Implementation Schedule (see *Annex C*).

Key observations during the reporting period are summarised as follows:

27 September 2022

- No particular observation during this inspection.

Other than the above observations, the Contractor has implemented environmental mitigation measures recommended in the approved EIA Report and EM&A Manual.

### 5.2 *LANDSCAPE AND VISUAL AUDIT*

Inspection of the landscape and visual mitigation measures for the operation phase of the Project was performed on 27 September 2022.

It was confirmed that the necessary landscape and visual mitigation measures during the operation phase as summarised in *Annex C* were generally implemented by the Contractor. No specific observation was found during the joint site inspection on 27 September 2022. No non-compliance in relation to the landscape and visual mitigation measures was identified during the site audits in this reporting period and therefore no further actions are required. The ET/MT will keep track of the EM&A programme to check compliance with environmental requirements and the proper implementation of all necessary mitigation measures.

**6 ENVIRONMENTAL NON-CONFORMANCE AND DEFICIENCIES**

**6.1 SUMMARY OF ENVIRONMENTAL NON-COMPLIANCE AND DEFICIENCIES**

No non-compliance and deficiencies were recorded during this reporting period.

**6.2 SUMMARY OF ENVIRONMENTAL COMPLAINT**

No complaint was received during the reporting period.

**6.3 SUMMARY OF ENVIRONMENTAL SUMMON AND SUCCESSFUL PROSECUTION**

No summon/prosecution was received during the reporting period. The cumulative summons/prosecution log is shown in *Annex E*.

## 7 *FUTURE KEY ISSUES*

### 7.1 *KEY ISSUES FOR THE COMING MONTH*

Activities to be undertaken for the coming reporting period are:

- Operation of the Project; and
- Steam Generator tube bundle replacement and ECU cassette replacement for the ASP with anticipated ten days shutdown.

This EM&A Report presents the EM&A programme undertaken during the reporting period from **1 to 30 September 2022** in accordance with EM&A Manual (Version F) and requirements of EP (FEP-01/395/2010/C).

For the operation phase, exceedances of the emission limits were not recorded under normal operating conditions during the reporting period.

**Table 8.1** *Exceedances for Stack Emissions*

<b>Stack</b>	<b>Exceedances During the Reporting Period</b>
Cogeneration Unit 1 (CHP 1)	• No exceedances in this reporting period.
Cogeneration Unit 2 (CHP 2)	• No exceedances in this reporting period.
Cogeneration Unit 3 (CHP 3)	• No exceedances in this reporting period.
Ammonia Stripping Plant (ASP)	• No exceedances in this reporting period.

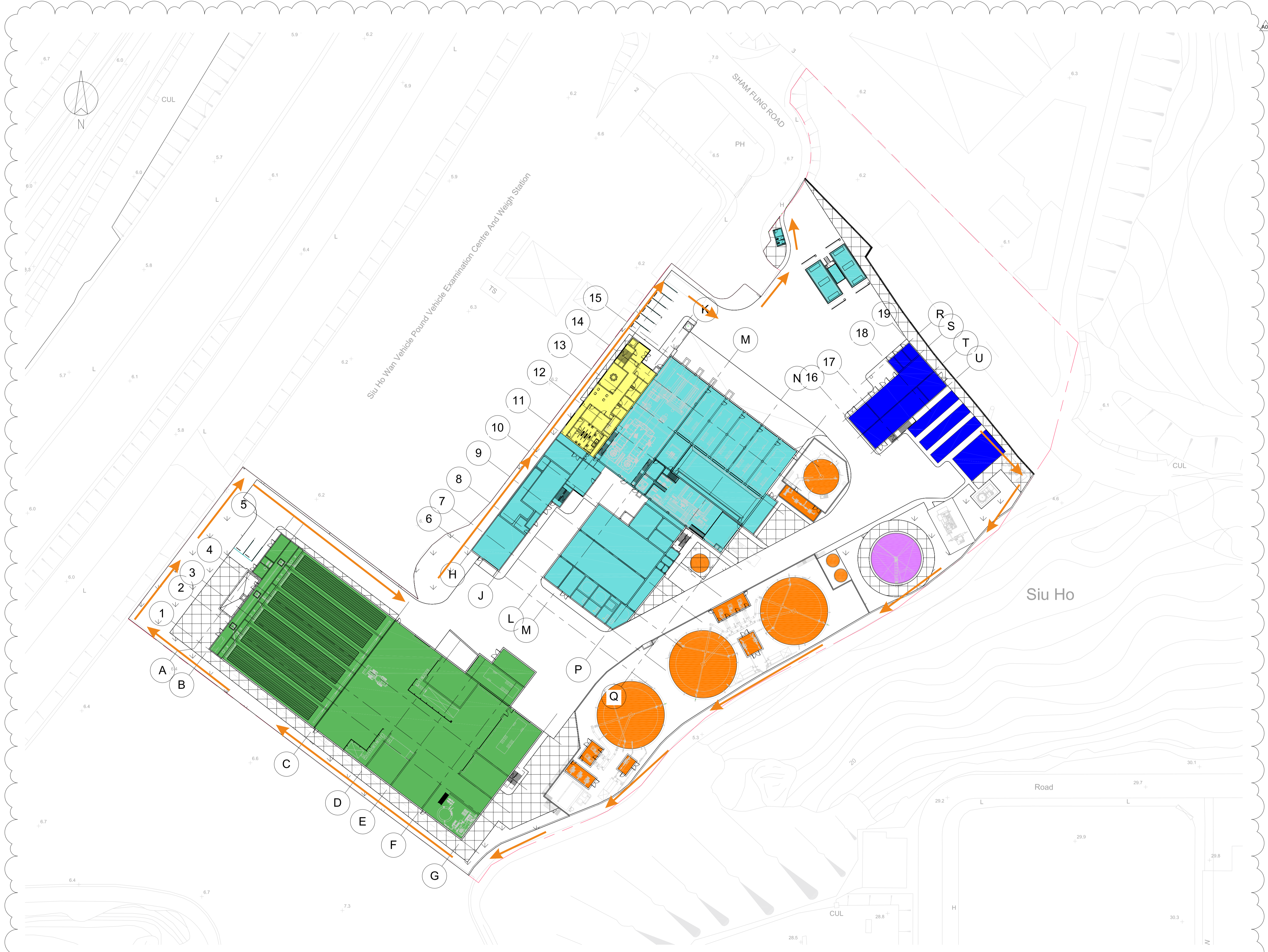
The environmental control /mitigation measures related to air quality, water quality, waste (including land contamination prevention), hazard-to-life and landscape and visual recommended in the approved EIA Report and the EM&A Manual were properly implemented by the Contractor during the reporting month.

Monthly landscape and visual monitoring were conducted in the reporting period. The necessary landscape and visual mitigation measures recommended in the approved EIA Report were generally implemented by the Contractor.

No complaint/summon/prosecution was received.

Annex A

## Project Layout



**Key**  
 Patrol Route

A01	05/03/15	CW	MB	IMTECH BACKGROUNDS UPDATED
A00	18/02/15	CW	MB	DRAFT ISSUE
REV	DATE	BY	APP	DESCRIPTION

CLIENT  
 ENVIRONMENTAL PROTECTION DEPARTMENT  
 GOVERNMENT OF THE HKSAR

CLIENT'S CONSULTANT  
 **AECOM**  
 AECOM ASIA CO. LTD.

CONTRACTOR  
    
 OSCAR BIOENERGY JV

LEAD DESIGNER  
 **ARUP**  
 Ove Arup & Partners Hong Kong Limited

ENVIRONMENTAL TEAM  
 **ERM**  
 ERM HONG KONG LIMITED

INDEPENDENT CONSULTANTS  
 **MEINHARDT**  
 Meinhardt Infrastructure and Environment Limited  
 邁達基建築環保工程顧問有限公司

PROJECT  
 ORGANIC WASTE TREATMENT FACILITIES  
 PHASE 1  
 EP/SP/61/10

STATUS  
 DRAFT ISSUE

DRAWING TITLE  
 SITE LAYOUT

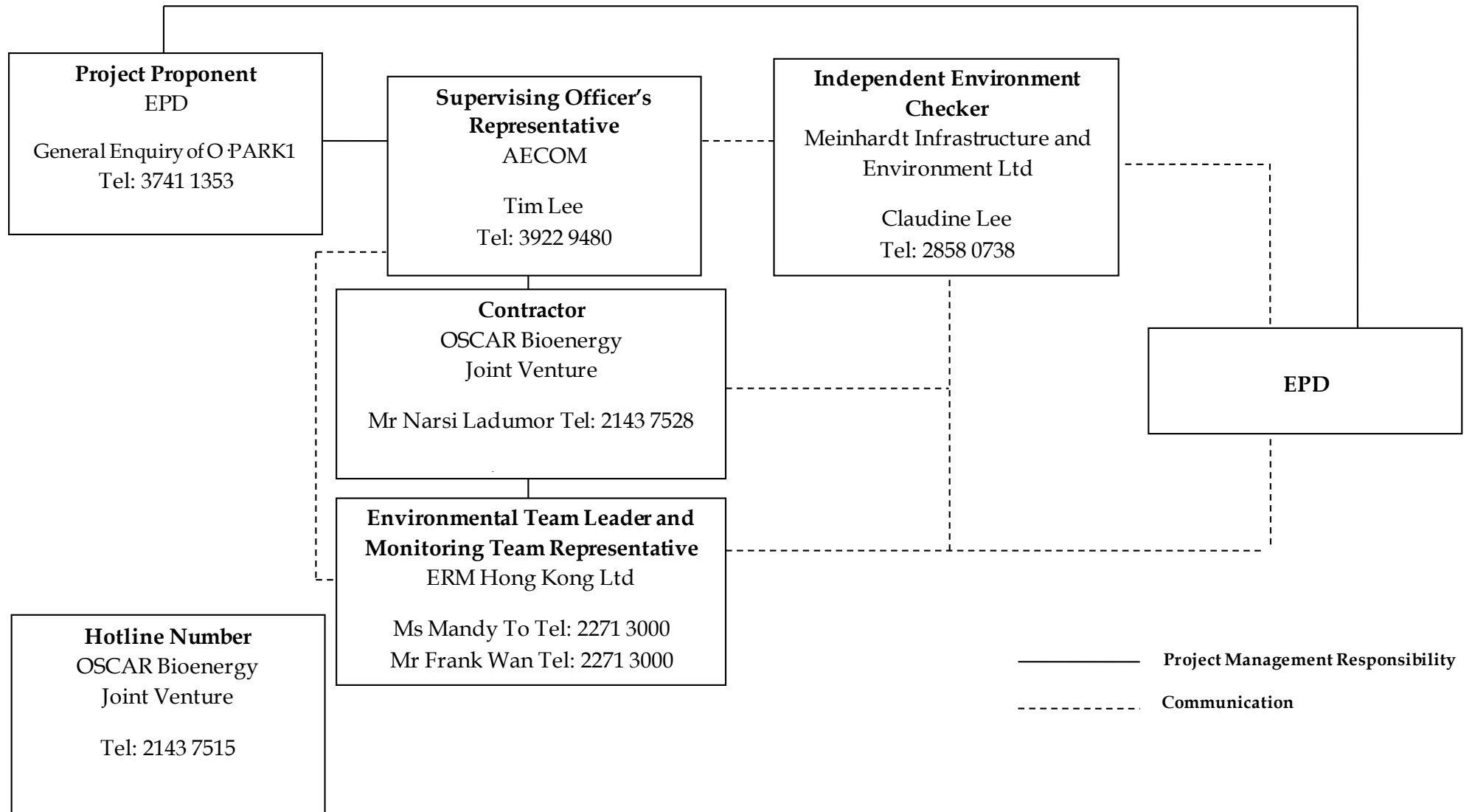
DRAWN CW	CHECKED RS	APPROVED DP
SCALE 1:500@A1 / 1:1000@A3	DATE 12/02/15	
JOB NO. 239956	DRAWING NO. DR-OAP-20-0-CA-1001	REV. A01

Plot Time: 05/03/15 21:20:07  
 Plot Location: C:\Users\mathew.brown\Documents\QWTF\_Architectural Working Model (Combined) - CEH\_mathew.brown.rvt

Annex B

## Project Organisation Chart with Contact Details

Project Organization (with contact details)





Annex C

## Implementation Schedule of Mitigation Measures

Annex C Summary of Mitigation Measures Implementation Schedule for Operation Phase

EIA Ref.	EM&A Log Ref.	Environmental Protection Measures	Location/ Timing	Status
<i>Summary of Environmental Mitigation Measures in the EIA and EM&amp;A Manual</i>				
<i>A. Air Quality</i>				
3.78	2.7 & 2.13 – 2.19	<p><u>Air Pollution Control (Construction Dust) Regulation &amp; Good Site Practices</u></p> <ul style="list-style-type: none"> <li>•Commissioning tests shall be conducted to confirm the centralized air pollution control unit, the cogen units, the standby flaring unit and ASP against the design emission levels as stated in Tables 2.2 - 2.5.</li> <li>•Odour monitoring shall be conducted at the stack exhaust of the centralized air pollution control unit weekly in the first month of the commissioning stage.</li> </ul>	OWTF Stacks/ During Commissioning Stage	√
3.78	2.7-2.12	<p><u>Air Pollution Control and Stack Monitoring</u></p> <ul style="list-style-type: none"> <li>•Stack monitoring shall be installed for the centralized air pollution control unit, cogen units and ASP of OWTF to ensure that the air emissions from OWTF would meet the design emission limits as well as EPD criteria.</li> </ul>	During Operation	√
3.78	2.20- 2.28	<ul style="list-style-type: none"> <li>•Odour Patrol at site boundary of OWTF</li> </ul>	OWTF Site Boundary/ During Operation (The need to continue the odour patrol after the end of the 2-year monitoring period would depend on the monitoring results and should be agreed with EPD)	√
<i>B. Hazard to Life</i>				
4.103	3.4	<p><u>Operation Phase</u></p> <ul style="list-style-type: none"> <li>•3m high fence should be constructed along the boundary facing the SHWWTW</li> <li>•Emergency evacuation procedures should be formulated and the Contractor should ensure on site staff should be familiar with these procedures. Diagram showing the escape routes to a safe place should be posted in the site notice boards and at the entrance/ exit of site. A copy of the latest version emergency procedures should be dispatched to Tung Chung Fire Station for reference once available.</li> <li>•The emergency procedures should specify means of providing a rapid and direct warning</li> </ul>	Work Site / During Operation Period	√

EIA Ref.	EM&A Log Ref.	Environmental Protection Measures	Location/ Timing	Status
		<p>(e.g. Siren and Flashing Light) to personnel on site in the event of chlorine gas release in the SHWWTW.</p> <ul style="list-style-type: none"> <li>•The Contractor should establish a communication channel with the SHWWTW operation personnel and FSD. In case of any hazardous incidents in the treatment works, operation personnel of SHWWTW should advise the Contractor to inform personnel on site to proceed with emergency procedure. The Contractor should appoint a Liaison Officer to communicate with FSD Incident Commander on site in case of emergency.</li> <li>•Periodic drills should be coordinated and conducted to ensure all on site personnel are familiar with the emergency procedures. Upon completion of the drills, a review on every step taken should be conducted to identify area of improvement. Prior notice of periodic drills should be given to Station Commander of Tung Chung Fire Station. Joint operational exercise with FSD and SHWWTW is recommended.</li> </ul>		
<i>C. Water Quality</i>				
5.44	4.5	<p><u>Wastewater from Organic Waste Treatment Process</u></p> <p>The Project site will be equipped with an adequately sized wastewater treatment plant. A high rate type of active sludge system specifically designed for the removal of nitrogen components from the wastewater in combination with conversion of residual BOD and COD would be deployed. The wastewater treatment plant would also be incorporated with SHARON or annamox technology or equivalent to achieve high total overall nitrogen removal. Wastewater generated from the OWTF (including wastewater from dewatering process, leachate from waste reception area, condensate from biogas handling, wastewater from scrubber of air treatment system and any surplus water from truck washing facility) will be diverted to the wastewater treatment plant. Treated effluent will then be stored temporarily in order to be used as process water within the plants. The storage volume would be around 20 m<sup>3</sup>. Overflow from the tank will be discharged to foul sewers. The polluting parameters in effluent shall be in compliance with the requirements specified in the TM- DSS. The design, installation and operation of the wastewater treatment plant shall be licensed under the Waste Disposal Ordinance and subject to the effluent monitoring as required under the WPCO which is under the ambit of regional office (RO) of EPD. To ensure that wastewater can be adequately treated and effluent from treatment plant can meet the standards listed in TM- DSS, the following mitigation measure should be conducted.</p> <ul style="list-style-type: none"> <li>• Cleaning and maintenance of treatment facilities should be conducted on a regular basis to ensure that removal rate of each treatment facility would not be reduced.</li> <li>• Cleaning and maintenance of pipelines should be carried out on a regular basis to</li> </ul>	Work Site / During Design & Operation Period	√

EIA Ref.	EM&A Log Ref.	Environmental Protection Measures	Location/ Timing	Status
		<p>prevent block of pipeline and leaching of wastewater, and therefore prevent overflowed or leached wastewater discharging into nearby drainages and water streams.</p> <ul style="list-style-type: none"> <li>Regular site inspection should be conducted to ensure that no wastewater can be directly discharged into nearby water streams.</li> </ul>		
5.55	4.5	In the scrubber, spraying water should be re-circulated to minimize the need for external water. The spraying water would be collected at the bottom of the scrubber. Excess water would be discharged to the wastewater treatment plant as described in Section 5.54.	Work Site / During Design & Operation Period	√
5.56	4.5	The waste reception, treatment facilities and compost storages of OWTF should be located in enclosed buildings to prevent generation of contaminated rain runoff. All surface runoff such as washed water generated in the treatment processes areas should be properly collected and diverted to the on-site wastewater treatment plant as described in Section 5.54.	Work Site / During Design & Operation Period	√
5.57	4.5	All drainage system for collection and transferring wastewater generated in the OWTF to the on-site wastewater treatment plant as described in Section 5.54 should be capable of preventing clogging and easy maintenance and cleaning.	Work Site / During Design & Operation Period	√
<i>D. Waste Management</i>				
6.50	5.12	<p><u>Good Site Practices</u></p> <p>Good operational practices should be adopted to Minimize waste management impacts:</p> <ul style="list-style-type: none"> <li>Obtain the necessary waste disposal permits from the appropriate authorities, in accordance with the Waste Disposal Ordinance (Cap. 354), Waste Disposal (Chemical Waste) (General) Regulation and the Land (Miscellaneous Provision) Ordinance (Cap. 28);</li> <li>Nomination of an approved person to be responsible for good site practice, arrangements for collection and effective disposal to an appropriate facility of all wastes generated at the site;</li> <li>Use of a waste haulier licensed to collect specific category of waste;</li> <li>A trip-ticket system should be included as one of the contractual requirements and implemented by the Environmental Team to monitor the disposal of solid wastes at public filling facilities and landfills, and to control fly tipping. Reference should be made to ETWB TCW No. 31/2004.</li> <li>Training of site personnel in proper waste management and chemical waste handling procedures;</li> <li>Separation of chemical wastes for special handling and appropriate treatment at a licensed facility;</li> <li>Routine cleaning and maintenance programme for drainage systems, sumps and oil</li> </ul>	During Operation Period	√

EIA Ref.	EM&A Log Ref.	Environmental Protection Measures	Location/ Timing	Status
		interceptors; •Provision of sufficient waste disposal points and regular collection for disposal; •Adoption of appropriate measures to minimize windblown litter and dust during transportation of waste, such as covering trucks or transporting wastes in enclosed containers; and •Implementation of a recording system for the amount of wastes generated, recycled and disposed of (including the disposal sites).		
6.51	5.13	<u>Waste Reduction Measures</u> Good management and control can prevent the generation of significant amounts of waste. It is recommended that the following good operational practices should be adopted to ensure waste reduction: •Segregation and storage of different types of waste in different containers, skips or stockpiles to enhance reuse or recycling of materials and their proper disposal; •Encourage collection of aluminum cans, plastic bottles and packaging material (e.g. carton boxes) and office paper by individual collectors. Separate labelled bins should be provided to help segregate this waste from other general refuse generated by the work force; and •Any unused chemicals or those with remaining functional capacity should be reused as far as practicable.	During Operation Period	√
6.52	5.14	<u>Wastes Generated from Pre-Treatment Process</u> Wastes generated from pre-treatment process should be recycled as far as possible. Wastes generated from pre- treatment process should also be separated from any chemical waste and stored in covered skips. The recyclables should be collected by licensed collectors, while the rest of the waste should be removed from the site on a daily basis to minimize odour, pest and litter impacts. Open burning must be strictly prohibited.	Pre-Treatment Process/ During Operation Period	√
6.53-6.56	5.15-5.18	<u>Chemical Wastes</u> •Chemical waste generated from machinery maintenance and servicing should be managed in accordance with Code of Practice on the Packaging, Labelling and storage of Chemical Wastes under the provisions of Waste Disposal (Chemical Waste) (General) Regulation. The chemical waste should be collected by drum-type containers and removed by licensed chemical waste contractors. •Plant / equipment maintenance schedules should be planned in order to minimize the	Whole Site / During Operation Period	√

EIA Ref.	EM&A Log Ref.	Environmental Protection Measures	Location/ Timing	Status
		<p>generation of chemical waste.</p> <ul style="list-style-type: none"> <li>•Non-recyclable chemical wastes and lubricants should be disposed of at appropriate facilities, such as CWTC. Copies or counterfoils from collection receipts issued by the licensed waste collector should be kept for recording purpose.</li> <li>•Recyclable chemical waste will be transported off-site for treatment by a licensed collector. The Contractor will need to register with EPD as a chemical waste producer. Where possible, chemical wastes (e.g. waste lubricants) would be recycled at appropriate facilities, such as Dunwell's oil re-refinery.</li> </ul>		
6.57-6.58	5.19-5.20	<p><u>General Refuse</u></p> <ul style="list-style-type: none"> <li>•Waste generated in offices should be reduced through segregation and collection of recyclables. To promote the recycling of wastes such as used paper, aluminum cans and plastic bottles, it is recommended that recycling bins should be clearly labelled and placed at locations with easy access. For the collection of recyclable materials, they should be collected by licensed collectors.</li> <li>•General refuse, other than segregated recyclable wastes, should be separated from any chemical waste and stored in covered skips. The general refuse should be removed from the site on a daily basis to minimize odour, pest and litter impacts. Also, open burning of refuse must be strictly prohibited.</li> </ul>	Whole Site / During Operation Period	√
<i>E. Proposed Land Contamination Preventive Measures</i>				
6.65	5.21 (i)	<p><u>Fuel Oil Containers</u></p> <ul style="list-style-type: none"> <li>•Fuel oil should be stored in suitable containers.</li> <li>•All fuel oil containers should be securely closed.</li> <li>•Appropriate labels showing the name of fuel oil should be posted on the containers.</li> <li>•Drip trays should be provided for all containers.</li> </ul>	Fuel Oil Storage Containers /During Operation Period	√
6.65	5.21 (ii)	<p><u>Storage Area</u></p> <ul style="list-style-type: none"> <li>•Distance between the fuel oil refuelling points and the fuel oil containers should be minimized.</li> <li>•The storage area should be used for fuel oil storage only.</li> <li>•No surface water drains or foul sewers should be connected to the storage area.</li> <li>•The storage area should be enclosed by three sides by a wall and have an impermeable floor or surface.</li> </ul>	Fuel Oil Storage Area /During Operation Period	√
6.65	5.21 (iii)	<p><u>Fuel Oil Spillage Response</u></p> <p>An Oil Spill Response Plan should be prepared by the operator to document the appropriate</p>	Whole Site / During Operation Phase	√

EIA Ref.	EM&A Log Ref.	Environmental Protection Measures	Location/ Timing	Status
		<p>response procedures for oil spillage incident in detail. General procedures to be taken in case of fuel oil spillage are presented below.</p> <ul style="list-style-type: none"> <li>• <u>Training</u> Training on oil spill response actions should be given to relevant staff. The training should cover the followings: <ul style="list-style-type: none"> <li>- Tools &amp; resources to combat oil spillage and fire, e.g. locations of oil spill handling equipment and firefighting equipment;</li> <li>- General methods to deal with oil spillage and fire incidents;</li> <li>- Procedures for emergency drills in the event of oil spills and fire; and</li> <li>- Regular drills should be carried out.</li> </ul> </li> <li>• <u>Communication</u> Establish communication channel with the Fire Services Department (FSD) and EPD to report any oil spillage incident so that necessary assistance from relevant department could be quickly sought.</li> <li>• <u>Response Procedure</u> Any fuel oil spillage within the Project Site should be immediately reported to the Site Manager with necessary details including location, source, possible cause and extent of the spillage Site Manager should immediately attend to the spillage and initiate any appropriate action to confine and clean up the spillage. The response procedures should include the following: <ul style="list-style-type: none"> <li>- Identify and isolate the source of spillage as soon as possible.</li> <li>- Contain the oil spillage and avoid infiltration into soil / groundwater and discharge to storm water channels.</li> <li>- Remove the oil spillage.</li> <li>- Clean up the contaminated area.</li> <li>- If the oil spillage occurs during refuelling, the refuelling operation should immediately be stopped.</li> <li>- Recovered contaminated fuel oil and the associated material to remove the spilled oil should be considered as chemical waste. The handling and disposal procedures for chemical wastes are discussed in the following paragraphs.</li> </ul> </li> </ul>		
6.66	5.22 (i)	<u>Chemicals and Chemical Wastes Handling &amp; Storage</u>	Whole Site / During Operation	√

EIA Ref.	EM&A Log Ref.	Environmental Protection Measures	Location/ Timing	Status
		<ul style="list-style-type: none"> <li>• Chemicals and chemical wastes should only be stored in suitable containers in purpose-built areas.</li> <li>• The storage of chemical wastes should comply with the requirements of the Code of Practice on the Packaging, Labelling and Storage of Chemical Wastes.</li> <li>• The storage areas for chemicals and chemical wastes should have an impermeable floor or surface. The impermeable floor I surface should possess the following properties: <ul style="list-style-type: none"> <li>- Not liable to chemically react with the materials and their containers to be stored.</li> <li>- Able to withstand normal loading and physical damage caused by container handling</li> <li>- The integrity and condition of the impermeable floor or surface should be inspected at regular intervals to ensure that it is satisfactorily maintained</li> </ul> </li> <li>• For liquid chemicals and chemical wastes storage, the storage area should be bonded to contain at least 110% of the storage capacity of the largest containers or 20% of the total quantity of the chemicals/ chemical wastes stored, whichever is the greater.</li> <li>• Storage container should be checked at regular intervals for their structural integrity and to ensure that the caps or fill points are tightly closed.</li> <li>• Chemical handling should be conducted by trained workers under supervision.</li> </ul>	Period	
6.66	5.22 (ii)	<p><u>Chemicals and Chemical Wastes Spillage Response</u></p> <p>A Chemicals and / or Chemical Wastes Spillage Response Plan should be prepared by the operator to document in detail the appropriate response procedures for chemicals or chemical wastes spillage incidents. General procedures to be undertaken in case of chemicals I chemical waste spillages are presented below</p> <ul style="list-style-type: none"> <li>• Training <ul style="list-style-type: none"> <li>- Training on spill response actions should be given to relevant staff. The training should cover the followings: <ul style="list-style-type: none"> <li>- Tools &amp; resources to handle spillage, e.g. locations of spill handling equipment;</li> <li>- General methods to deal with spillage; and</li> <li>- Procedures for emergency drills in the event of spills.</li> </ul> </li> </ul> </li> <li>• Communication <p>Establish communication channel with Fire Services Department (FSD) and EPD to report the spillage incident so that necessary assistance from relevant department</p> </li> </ul>	Whole Site / During Operation Period	√



EIA Ref.	EM&A Log Ref.	Environmental Protection Measures	Location/ Timing	Status
		<p>could be quickly sought.</p> <ul style="list-style-type: none"> <li>Response Procedures</li> </ul> <p>Any spillage within OWTF site should be reported to the Site Manager. Site Manager shall attend to the spillage and initiate any appropriate actions needed to confine and clean up the spillage. The response procedures should include the followings:</p> <ul style="list-style-type: none"> <li>Identify and isolate the source of spillage as soon as possible;</li> <li>Contain the spillage and avoid infiltration into soil / groundwater and discharge to storm water channels (in case the spillage occurs at locations out of the designated storage areas);</li> <li>Remove the spillage; the removal method / procedures documented in the Material Safety Data Sheet (MSDS) of the chemicals spilled should be observed;</li> <li>Clean up the contaminated area (in case the spillage occurs at locations out of the designated storage areas); and</li> <li>The waste arising from the cleanup operation should be considered as chemical wastes.</li> </ul>		
6.67 - 6.69	5.23- 5.25	<p><u>Incident Record</u></p> <ul style="list-style-type: none"> <li>After any spillage, an incident report should be prepared by the Site Manager. The incident report should contain details of the incident including the cause of the incident, the material spilled and estimated spillage amount, and also the response actions undertaken. The incident record should be kept carefully and able to be retrieved when necessary.</li> <li>The incident report should provide sufficient details for the evaluation of any environmental impacts due to the spillage and assessment of the effectiveness of measures taken.</li> <li>In case any spillage or accidents results in significant land contamination, EPD should be informed immediately and the Project operator should be responsible for the cleanup of the affected area. The responses procedures described in Sections 6.65 - 6.66 of the EIA Report should be followed accordingly together with the land contamination assessment and remediation guidelines stipulated in the <i>Guidance Manual for Use of Risk-based Remediation Goals for Contaminated Land Management</i> and the <i>Guidance Note for Contaminated Land Assessment and Remediation</i>.</li> </ul>	Whole Site / During Operation Period	√
F. Landscape and Visual				

EIA Ref.	EM&A Log Ref.	Environmental Protection Measures	Location/ Timing	Status
7.98 & Table 7.8	Table 6.2	<u>Operation Phase</u> <ul style="list-style-type: none"> <li>• Aesthetic design of the facade, including its colour theme, pattern, texture , materials, finishing and associated structures to harmonize with the surrounding settings</li> <li>• Grass / groundcover planting to soften the roof</li> <li>• Heavy standard tree planting to screen proposed associated structures</li> <li>• Grasscrete paving to soften the harshness of large paved surface areas wherever possible</li> </ul>	Within Project Area / During Design & Operation Stages	√

Remark:

- √ Compliance of Mitigation Measures
- <> Compliance of Mitigation but need improvement
- x Non-compliance of Mitigation Measures
- ▲ Non-compliance of Mitigation Measures but rectified by OSCAR Bioenergy JV
- Δ Deficiency of Mitigation Measures but rectified by OSCAR Bioenergy JV
- N/A Not Applicable in Reporting Period

Annex D

## Waste Flow Table

**No. EP/SP/61/10 of Organic Resources Recovery Centre (Phase 1)**  
**Monthly Summary Waste Flow Table**

Month	Chemical Waste	Waste Generated from Pretreatment Process				General Refuse							
		Disposed of at Landfill (see Note 1)	Metals (see Note 2)	Paper/ cardboard packaging (see Note 2)	Plastics (see Note 3)	Disposed of at Landfill (see Note 1 & 4)		Metals (see Note 2)		Paper/ cardboard packaging (see Note 2)		Plastics (see Note 3)	
	Litre	tonne	tonne	tonne	tonne	No. of collection	tonne	No. of collection	tonne	No. of collection	tonne	No. of collection	tonne
March 2019	1,200	477.08	0	0	0	26	1.50	0	0	0	0	0	0
April 2019	0	455.60	0	0	0	22	1.27	0	0	0	0	0	0
May 2019	1,000	528.22	0	0	0	25	2.88	0	0	0	0	1	0.39
June 2019	0	459.23	0	0	0	24	2.76	0	0	0	0	0	0
July 2019	0	521.79	0	0	0	26	3.00	0	0	0	0	0	0
August 2019	40	441.05	0	0	0	27	3.11	0	0	0	0	0	0
September 2019	1,800	576.28	0	0	0	24	2.76	0	0	0	0	0	0
October 2019	0	441.22	0	0	0	25	2.88	0	0	0	0	0	0
November 2019	1,600	451.57	0	0	0	26	3.00	0	0	0	0	0	0
December 2019	1,009	488.13	0	0	0	24	2.76	0	0	0	0	0	0
January 2020	0	388.20	0	0	0	23	2.65	0	0	0	0	0	0
February 2020	4,525	372.97	0	0	0	24	2.76	0	0	0	0	0	0
March 2020	1,200	351.71	0	0	0	27	3.11	0	0	0	0	0	0
April 2020	0	363.92	0	0	0	21	2.42	0	0	0	0	0	0
May 2020	800	294.36	0	0	0	25	2.88	0	0	0	0	0	0
June 2020	0	347.23	0	0	0	25	2.88	0	0	0	0	0	0
July 2020	200	852.07	0	0	0	26	3.00	0	0	0	0	0	0
August 2020	0	700.25	0	1.20	0	25	2.88	0	0	0	0	0	0
September 2020	400	579.64	0	5.31	0	26	3.00	0	0	0	0	0	0
October 2020	0	840.75	0	5.83	0	24	2.76	0	0	0	0	0	0
November 2020	0	688.20	0	0.80	0	25	2.88	0	0	0	0	0	0
December 2020	766	685.47	0	0	0	25	2.88	0	0	0	0	0	0
January 2021	1,800	634.00	0	0	0	25	2.88	0	0	0	0	0	0
February 2021	6,120	377.72	0	0	0	21	2.42	0	0	0	0	0	0
March 2021	6,000	325.21	0	0	0	27	3.11	0	0	0	0	0	0

Month	Chemical Waste	Waste Generated from Pretreatment Process				General Refuse							
		Disposed of at Landfill (see Note 1)	Metals (see Note 2)	Paper/ cardboard packaging (see Note 2)	Plastics (see Note 3)	Disposed of at Landfill (see Note 1 & 4)		Metals (see Note 2)		Paper/ cardboard packaging (see Note 2)		Plastics (see Note 3)	
		Litre	tonne	tonne	tonne	tonne	No. of collection	tonne	No. of collection	tonne	No. of collection	tonne	No. of collection
April 2021	9,700	651.29	0	0	0	22	2.53	0	0	0	0	0	0
May 2021	4,000	671.03	0	0	0	24	2.76	0	0	0	0	0	0
June 2021	0	558.72	0	0	0	25	2.88	0	0	0	0	0	0
July 2021	0	382.74	0	0	0	26	3.00	0	0	0	0	0	0
August 2021	3,420	687.05	0	0	0	26	3.00	0	0	0	0	0	0
September 2021	2,400	304.01	0	0	0	25	2.88	0	0	0	0	0	0
October 2021	0	342.38	0	0	0	23	2.65	0	0	0	0	0	0
November 2021	2,000	394.26	0	0	0	26	3.00	0	0	0	0	0	0
December 2021	0	392.44	0	0.67	0	22	2.53	0	0	0	0	0	0
January 2022	0	359.27	0	0	0	23	2.65	0	0	0	0	0	0
February 2022	0	260.57	0	0	0	21	2.42	0	0	0	0	0	0
March 2022	0	253.75	0	0	0	23	2.65	0	0	0	0	0	0
April 2022	1,240	253.45	0	0	0	22	2.53	0	0	0	0	0	0
May 2022	0	354.94	0	0	0	24	2.76	0	0	0	0	0	0
June 2022	0	383.35	1.73	0.08	0	25	2.88	0	0	0	0	0	0
July 2022	0	430.89	4.87	1.15	0	24	2.76	0	0	0	0	0	0
August 2022	1,000	427.52	0.00	0.00	0	23	2.65	0	0	0	0	0	0
September 2022	0	476.92	0	0	0	21	2.42	0	0	0	0	0	0
<b>Total</b>	<b>52,220</b>	<b>20,226.46</b>	<b>6.60</b>	<b>15.04</b>	<b>0</b>	<b>1,043</b>	<b>117.39</b>	<b>0</b>	<b>0</b>	<b>0</b>	<b>0</b>	<b>1</b>	<b>0.39</b>

Notes:

1. General refuse was disposed of at NENT by subcontractors.
2. Metal and paper/cardboard packaging were collected by recycler for recycling.
3. Plastics refer to plastic bottles/containers, plastic sheets/foam from packaging material collected by recycler for recycling.
4. It was assumed that four 240-litre bins filled with 80% of general refuse were collected at each collection. The general refuse density was assumed to be around 0.15 kg/L.

Annex E

Environmental Complaint,  
Environmental Summons  
and Persecution Log

*Annex E Cumulative Complaint and Summons/Prosecutions Log*

<b>Reporting Month</b>	<b>Number of Complaints in Reporting Month</b>	<b>Number of Summons/Prosecutions in Reporting Month</b>
May 2015	0	0
June 2015	0	0
July 2015	0	0
August 2015	0	0
September 2015	0	0
October 2015	0	0
November 2015	0	0
December 2015	0	0
January 2016	0	0
February 2016	0	0
March 2016	0	0
April 2016	0	0
May 2016	0	0
June 2016	0	0
July 2016	0	0
August 2016	0	0
September 2016	0	0
October 2016	0	0

<b>Reporting Month</b>	<b>Number of Complaints in Reporting Month</b>	<b>Number of Summons/Prosecutions in Reporting Month</b>
November 2016	0	0
December 2016	0	0
January 2017	0	0
February 2017	0	0
March 2017	0	0
April 2017	0	0
May 2017	0	0
June 2017	0	0
July 2017	0	0
August 2017	0	0
September 2017	0	0
October 2017	0	0
November 2017	0	0
December 2017	0	0
January 2018	0	0
February 2018	0	0
March 2018	0	0
April 2018	0	0
May 2018	0	0
June 2018	0	0



<b>Reporting Month</b>	<b>Number of Complaints in Reporting Month</b>	<b>Number of Summons/Prosecutions in Reporting Month</b>
July 2018	0	0
August 2018	0	0
September 2018	1	0
October 2018	0	0
November 2018	0	0
December 2018	0	0
January 2019	0	0
February 2019	0	0
March 2019	0	0
April 2019	0	0
May 2019	0	0
June 2019	0	0
July 2019	0	0
August 2019	0	0
September 2019	0	0
October 2019	0	0
November 2019	0	0
December 2019	0	0
January 2020	0	0
February 2020	0	0

<b>Reporting Month</b>	<b>Number of Complaints in Reporting Month</b>	<b>Number of Summons/Prosecutions in Reporting Month</b>
March 2020	0	0
April 2020	0	0
May 2020	0	0
June 2020	0	0
July 2020	0	0
August 2020	0	0
September 2020	0	0
October 2020	0	0
November 2020	0	0
December 2020	0	0
January 2021	0	0
February 2021	0	0
March 2021	0	0
April 2021	0	0
May 2021	0	0
June 2021	0	0
July 2021	0	0
August 2021	0	0
September 2021	0	0
October 2021	0	0

<b>Reporting Month</b>	<b>Number of Complaints in Reporting Month</b>	<b>Number of Summons/Prosecutions in Reporting Month</b>
November 2021	0	0
December 2021	0	0
January 2022	0	0
February 2022	0	0
March 2022	0	0
April 2022	0	0
May 2022	0	0
June 2022	0	0
July 2022	0	0
August 2022	0	0
September 2022	0	0
<b>Overall Total</b>	<b>1</b>	<b>0</b>

Annex F

## Odour Patrol Result



ALS Technichem (HK) Pty Ltd  
11/F, Chung Shun Knitting Centre  
1-3 Wing Yip Street  
Kwai Chung, N.T., Hong Kong  
T +852 2610 1044 F +852 2610 2021

---

## CERTIFICATE OF ANALYSIS

---

CLIENT:	OSCAR BIOENERGY JOINT VENTURE	WORK ORDER:	HK22236298
CONTACT:	MS ANGEL TJIA	LABORATORY:	HONG KONG
ADDRESS:	NO. 5, SHAM FUNG ROAD, SIU HO WAN, NORTH LANTAU ISLAND, NT, HONG KONG	SUB-BATCH:	0
		DATE OF PATROL:	09 SEPTEMBER, 2022
		DATE OF ISSUE:	21 SEPTEMBER, 2022
PROJECT:	ODOUR PATROL FOR THE ORGANIC RESOURCES RECOVERY CENTRE PHASE 1 IN SIU HO WAN	SAMPLE TYPE:	ODOUR PATROL
SITE:	ORGANIC RESOURCES RECOVERY CENTRE PHASE 1 (O-PARK 1)	NO. OF LOCATIONS:	8

---

## COMMENTS

---

Odour Patrol was conducted by the staff of ALS Technichem (HK) Pty Ltd during 10:19 - 10:41 and 15:46 - 16:03.

Sampling information (Project name, Sample ID) is provided by client.

---

## NOTES

---

This is the Final Report and supersedes any preliminary report with this batch number.

The results related only to the items tested. All pages of this report have been checked and approved for release.

---

---

  
Richard Fung  
Managing Director - Hong Kong

This report may not be reproduced except with prior written approval from ALS Technichem (HK) Pty Ltd.



## 1. Summary of Work

The odour patrol was conducted during daytime and evening time.

## 2. Odour Patrol

Odour patrolling is a process to make use of the calibrated olfactory senses (i.e. the nasal sense) of the patrol members to evaluate the odour and its intensity during a patrol exercise at the site.

The patrol work was conducted by two odour patrol team members from ALS Technichem (HK) Pty Ltd during each time session. All members are free from any respiratory diseases during patrol day. None of the members has been working or living in the area of the vicinity of the inspection zone.

The patrol team was required to move slowly from one to the other monitoring locations and use their olfactory senses to detect odour at each location.

The location of odour sources and the areas to be affected by the odour nuisance were identified as much as possible.

During the patrolling, the meteorological and surrounding information were recorded:

- the prevailing weather condition;
- the wind direction;
- the wind speed;
- location where odour is spotted;
- possible source of odour;
- perceived intensity of the odour;
- duration of odour; and
- characteristics of the odour detected.

The perceived intensity is to be divided into 5 levels which are ranked in an ascending order as follows:

0	Not detected	No odour perceives or an odour so weak that it cannot be easily characterised or described
1	Slight	Identifiable odour, slight
2	Moderate	Identifiable odour, moderate
3	Strong	Identifiable odour, strong
4	Extreme	Severe odour

The odour patrol location was shown in Appendix 1.



**3. Odour Patrol Result:**

**3.1 Daytime:**

Location	Panellist	Weather	Time	T (°C)	RH (%)	WS (m/s)	WD (Degree)	Odour Intensity	Duration of Odour	Direction from Source	On-Site Observation	
											Odour Characteristics	Potential Odour Source
8	1	Sunny	10:19	35.6	53.8	0.0	--	0	NA	NA	NA	NA
	2							0				
7	1	Sunny	10:22	34.5	55.7	0.0	--	1	Continuous	NA	Garbage	Pre-Treatment Hall
	2							1				
2	1	Sunny	10:25	33.6	56.9	0.7	121	0	NA	NA	NA	NA
	2							0				
3	1	Sunny	10:26	33.8	57.5	0.5	132	0	NA	NA	NA	NA
	2							0				
5	1	Sunny	10:29	33.4	60.7	0.0	--	1	Continuous	NA	Grassy	Vegetation
	2							1				



Location	Panellist	Weather	Time	T (°C)	RH (%)	WS (m/s)	WD (Degree)	Odour Intensity	Duration of Odour	Direction from Source	On-Site Observation	
											Odour Characteristics	Potential Odour Source
6	1	Sunny	10:32	33.3	53.7	1.1	169	1	Continuous	Side wind	Garbage	Pre-Treatment Hall
	2							1				
9	1	Sunny	10:36	33.2	58.1	0.9	301	0	NA	NA	NA	NA
	2							0				
10	1	Sunny	10:41	27.3	62.5	0.0	--	0	NA	NA	NA	NA
	2							0				

Remark:

T: Air Temperature ;  
 RH: Relative Humidity;  
 WS: Wind Speed;  
 WD: Wind Direction.





**3.2 Evening time:**

Location	Panellist	Weather	Time	T (°C)	RH (%)	WS (m/s)	WD (Degree)	Odour Intensity	Duration of Odour	Direction from Source	On-Site Observation	
											Odour Characteristics	Potential Odour Source
8	1	Sunny	15:46	33.5	51.4	0.9	347	0	NA	NA	NA	NA
	2							0				
7	1	Sunny	15:48	33.6	51.5	0.5	107	1	Continuous	Side wind	Garbage	Pre-Treatment Hall
	2							1				
2	1	Sunny	15:51	33.5	53.6	0.0	--	1	Continuous	NA	Biogas	Biogas Tank Valve Holder
	2							1				
3	1	Sunny	15:52	32.8	57.1	0.0	--	0	NA	NA	NA	NA
	2							0				
5	1	Sunny	15:55	33.9	56.8	0.0	--	1	Continuous	NA	Grassy	Vegetation
	2							1				



Location	Panellist	Weather	Time	T (°C)	RH (%)	WS (m/s)	WD (Degree)	Odour Intensity	Duration of Odour	Direction from Source	On-Site Observation	
											Odour Characteristics	Potential Odour Source
6	1	Sunny	15:58	33.8	56.5	0.6	318	0	NA	NA	NA	NA
	2							0				
9	1	Sunny	16:00	32.4	55.8	0.8	305	0	NA	NA	NA	NA
	2							0				
10	1	Sunny	16:03	29.6	57.3	-	-	0	NA	NA	NA	NA
	2							0				

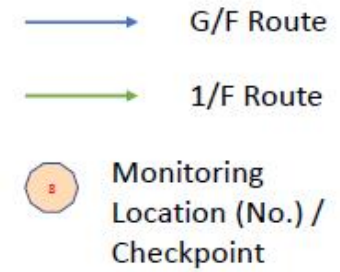
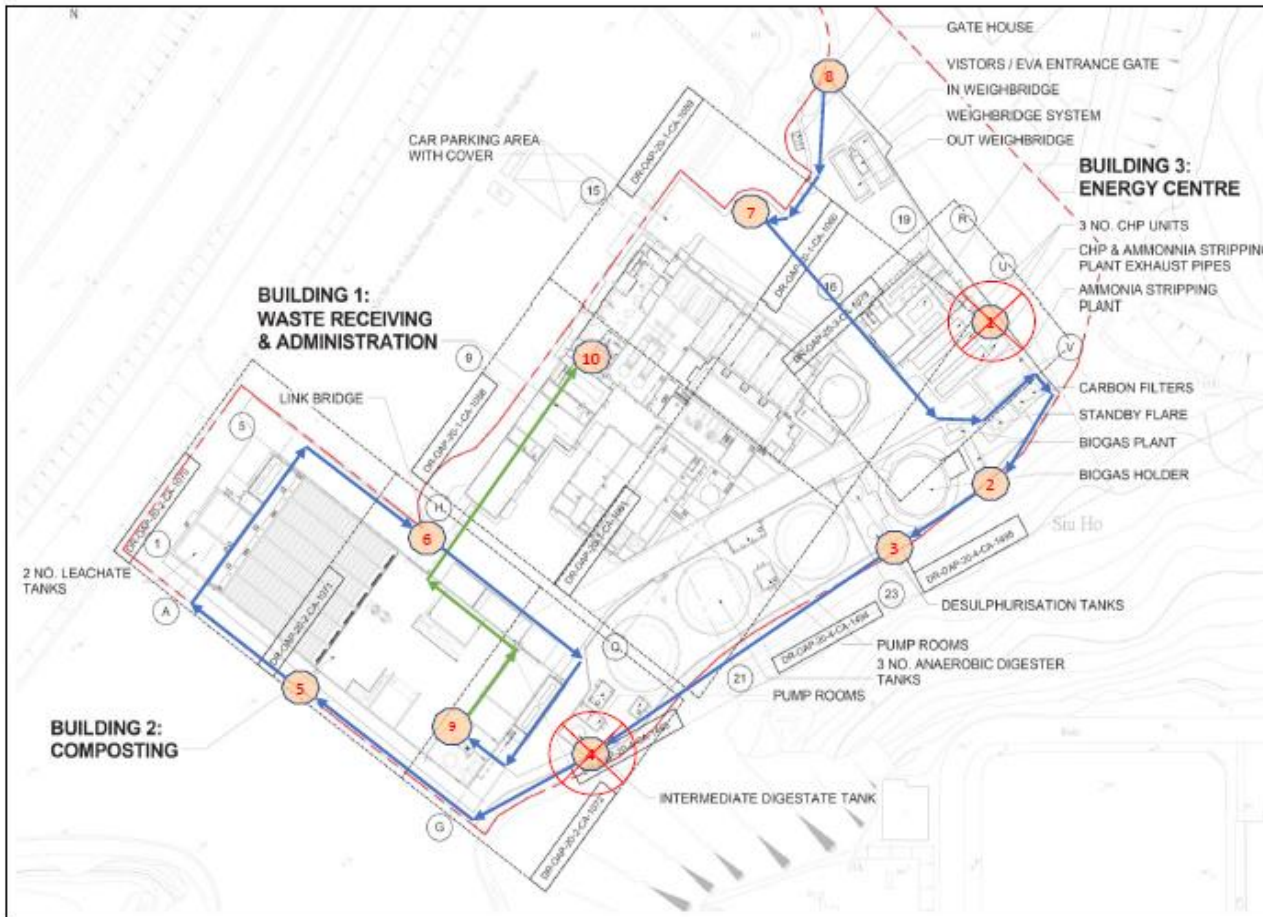
Remark:

T: Air Temperature ;  
 RH: Relative Humidity;  
 WS: Wind Speed;  
 WD: Wind Direction.



# APPENDIX 1

## Odour Patrol Route



## APPENDIX 2

### A2.1 Odour Patrol at Different Locations - Daytime (First round)



**Location: 2**



**Location: 3**



**Location: 5**



**Location: 6**



**Location: 7**



**Location: 8**



**Location: 9**



**Location: 10**

### A2.2 Odour Patrol at Different Locations - Evening time



**Location: 2**



**Location: 3**



**Location: 5**



**Location: 6**



**Location: 7**



**Location: 8**



**Location: 9**



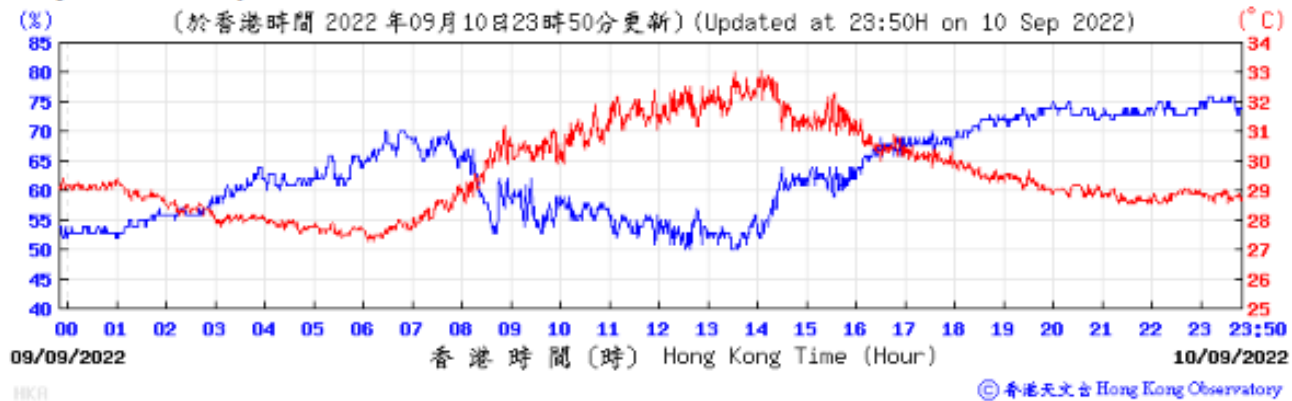
**Location: 10**



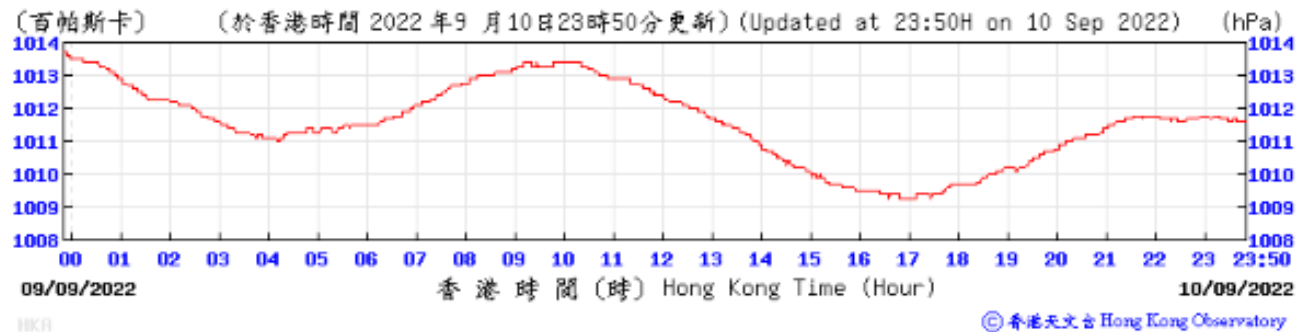
### APPENDIX 3

#### Extract of Meteorological Observations from Hong Kong Airport Observatory Station

Temperature/Humidity:

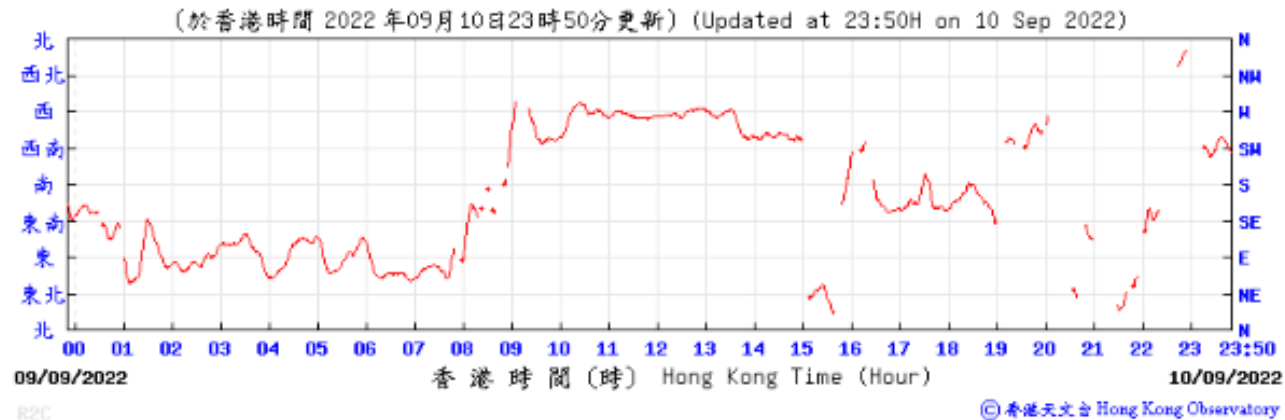


Pressure:

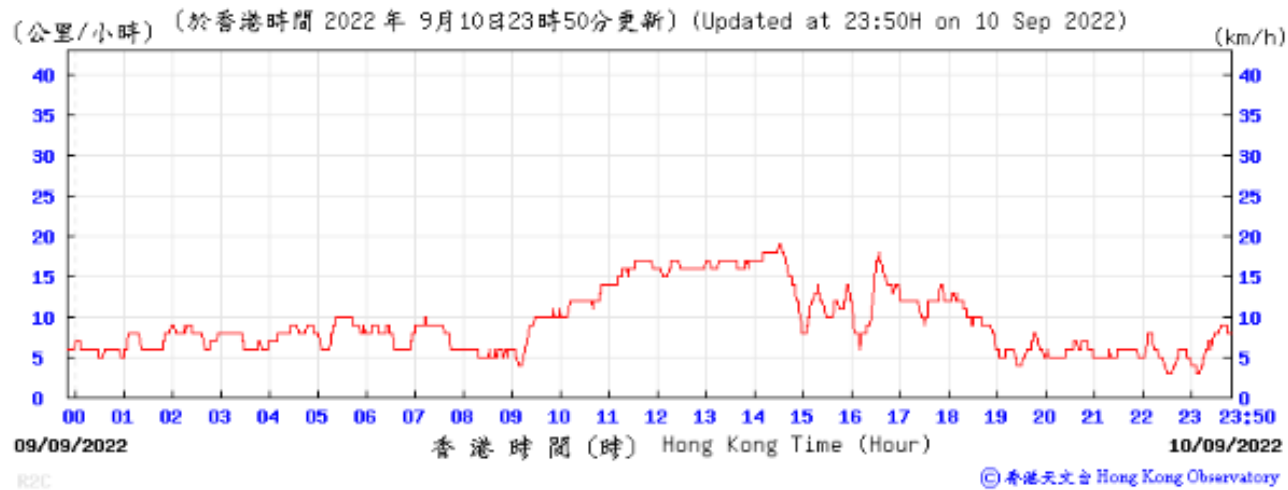




Wind Direction:



Wind Speed:





---

## CERTIFICATE OF ANALYSIS

---

CLIENT:	OSCAR BIOENERGY JOINT VENTURE	WORK ORDER:	HK2237519
CONTACT:	MS ANGEL TJIA		
ADDRESS:	NO. 5, SHAM FUNG ROAD, SIU HO WAN, NORTH LANTAU ISLAND, NT, HONG KONG	LABORATORY:	HONG KONG
		SUB-BATCH:	0
		DATE OF PATROL:	22 SEPTEMBER 2022
		DATE OF ISSUE:	3 OCTOBER 2022
PROJECT:	AD HOC ODOUR PATROL FOR THE ORGANIC RESOURCES RECOVERY CENTRE PHASE 1 IN SIU HO WAN	SAMPLE TYPE:	ODOUR PATROL
SITE:	ORGANIC RESOURCES RECOVERY CENTRE PHASE 1 (O-PARK 1)	NO. OF LOCATIONS:	8

---

## COMMENTS

---

This was an ad hoc odour patrol event requested by the client and conducted by ALS Technichem staff during 10:33 - 10:57 on 22<sup>nd</sup> September 2022.

Sampling information (Project name, Sample ID) is provided by client.

---

## NOTES

---

This is the Final Report and supersedes any preliminary report with this batch number.

The results related only to the items tested. All pages of this report have been checked and approved for release.

---

Richard Fung  
Managing Director - Hong Kong

This report may not be reproduced except with prior written approval from ALS Technichem (HK) Pty Ltd.





## 1. Summary of Work

This ad hoc odour patrol was conducted at eight (8) selected locations as requested by the client.

## 2. Odour Patrol

Odour patrolling is a process to make use of the calibrated olfactory senses (i.e. the nasal sense) of the patrol members to evaluate the odour and its intensity during a patrol exercise at the site.

The patrol work was conducted by two odour patrol team members from ALS Technichem (HK) Pty Ltd during each time session. All members are free from any respiratory diseases during patrol day. None of the members has been working or living in the area of the vicinity of the inspection zone.

The patrol team was required to move slowly from one to the other monitoring locations and use their olfactory senses to detect odour at each location.

The location of odour sources and the areas to be affected by the odour nuisance were identified as much as possible.

During the patrolling, the meteorological and surrounding information were recorded:

- the prevailing weather condition;
- the wind direction;
- the wind speed;
- location where odour is spotted;
- possible source of odour;
- perceived intensity of the odour;
- duration of odour; and
- characteristics of the odour detected.

The perceived intensity is to be divided into 5 levels which are ranked in an ascending order as follows:

0	Not detected	No odour perceives or an odour so weak that it cannot be easily characterised or described
1	Slight	Identifiable odour, slight
2	Moderate	Identifiable odour, moderate
3	Strong	Identifiable odour, strong
4	Extreme	Severe odour

The odour patrol location was shown in Appendix 1.



**3. Odour Patrol Result:**

Location	Panellist	Weather	Time	T (°C)	RH (%)	WS (m/s)	WD (Degree)	Odour Intensity	Duration of Odour	Direction from Source	On-Site Observation	
											Odour Characteristics	Potential Odour Source
8	1	Sunny	10:33	30.4	72.0	3.2	176	1	Intermittent	Side wind	Garbage	Pre-treatment Hall
	2							1				
7	1	Sunny	10:35	30.2	73.9	0.9	245	0	NA	NA	NA	NA
	2							0				
2	1	Sunny	10:39	31.8	76.8	0.0	--	0	NA	NA	NA	NA
	2							0				
3	1	Sunny	10:40	31.5	74.4	0.8	003	1	Intermittent	Side wind	Biogas	Biogas Tank Valve Holder
	2							1				
5	1	Sunny	10:45	31.1	82.1	0.4	242	1	Intermittent	Side wind	Grassy	Nearby Vegetation
	2							1				



Location	Panellist	Weather	Time	T (°C)	RH (%)	WS (m/s)	WD (Degree)	Odour Intensity	Duration of Odour	Direction from Source	On-Site Observation	
											Odour Characteristics	Potential Odour Source
6	1	Sunny	10:48	31.0	77.4	1.4	154	1	Intermittent	Side wind	Garbage	Pre-treatment Hall
	2							1				
9	1	Sunny	10:54	30.0	84.8	1.4	115	0	NA	NA	NA	NA
	2							0				
10	1	Sunny	10:57	25.2	79.7	NA	NA	1	Continuous	NA	Musty	Air conditioner
	2							1				

Remark:

T: Air Temperature ;  
 RH: Relative Humidity;  
 WS: Wind Speed;  
 WD: Wind Direction.



## APPENDIX 1 Odour Patrol Route



- G/F Route
- 1/F Route
- Monitoring Location (No.) / Checkpoint

## APPENDIX 2

### Odour Patrol Locations Photos



**Location: 2**



**Location: 3**



**Location: 5**



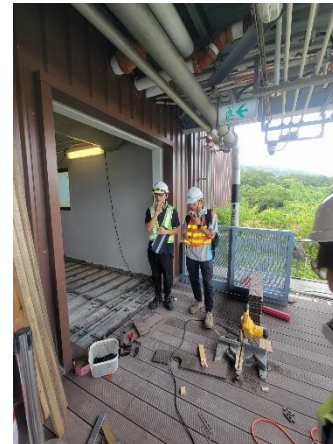
**Location: 6**



**Location: 7**



**Location: 8**



**Location: 9**



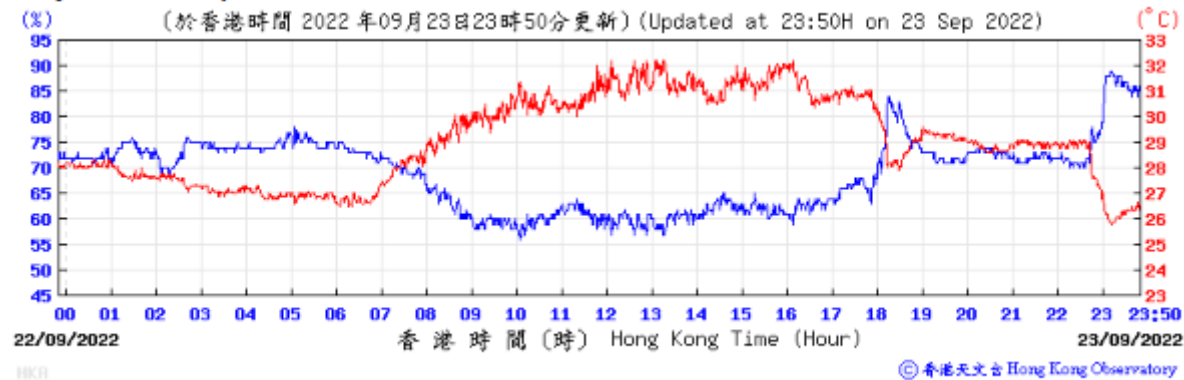
**Location: 10**



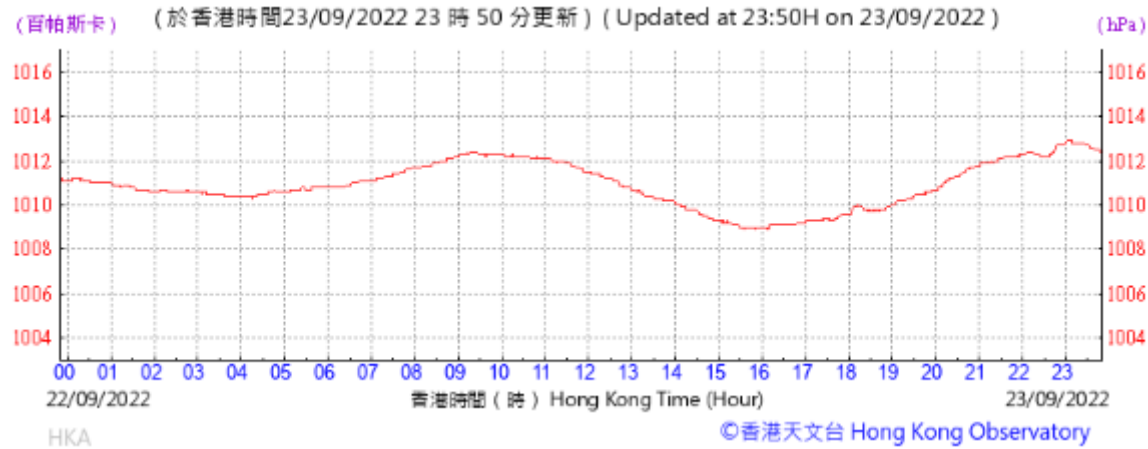
### APPENDIX 3

#### Extract of Meteorological Observations from Hong Kong Airport Observatory Station

Temperature/Humidity:

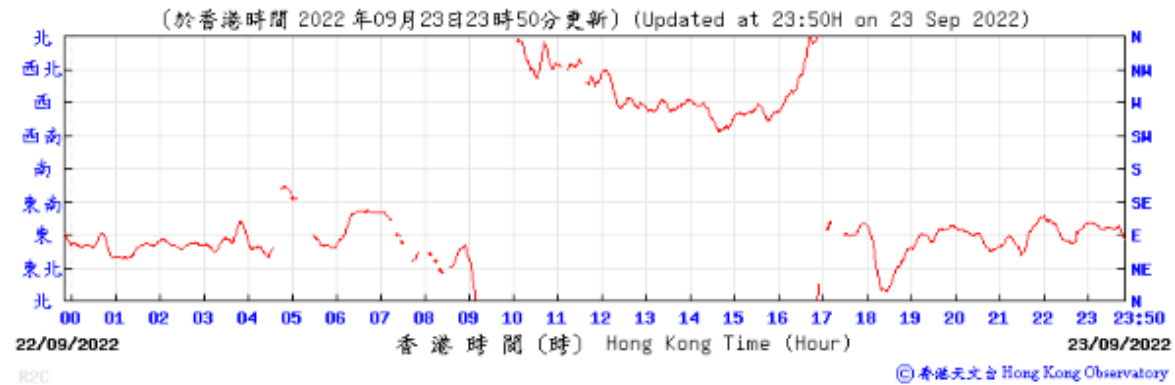


Pressure:





Wind Direction:



Wind Speed:

