

**July 2015**

**Monthly EM & A Record for Landscape and Visual Impact**  
**(July 2015)**

Prepared By:  
**ADI Limited**



### Monthly EM & A Record for Landscape and Visual Impact

The landscape and visual impact assessment of the EIA Study recommended a series of mitigation measures to ameliorate the landscape and visual impacts of the Project. The measures for the operation phase as recommended in the EIA Report are summarized in Table 1.1.

Observation of the implementation of proposed landscape and visual mitigation measures are summarized in Table 1.1.

**Table 1.1 Record of Implementation of the Proposed Landscape and Visual Mitigation Measures in Operation Phase (July 2015)**

ID No.	Nature / Type	Landscape and Visual Mitigation Measures	Status (July 2015)	Remarks
OM1	Design/ Construction Planning	Aesthetic design of the façade, chimneys of STF and associated structures to harmonize with the settings.	The development to the design of the facade has improved upon the aesthetic aspects of the scheme from a landscape and contextual perspective. The chimneys of STF used to be a separate element, but it is now part of the building and is much more coordinated. Also, the main building is now more sinuously profiled with an elegant and pleasing form and more sympathetic to the environment. The	Site photos refer to Appendix 1-1.

ID No.	Nature / Type	Landscape and Visual Mitigation Measures	Status (July 2015)	Remarks
			trellis roof profile also sits more sympathetically with the peaks and mounds of the surrounding mountainous terrain. The used of recessive colors results in scheme which is less visually prominent.	
OM2	Design/ Construction Planning	Shrub and climbing planting to soften proposed structures.	The proposed climbing planting along the boundary fence wall is being established.	Site photos refer to Appendix 1-2
OM3	Design/ Construction Planning	Heavy standard tree planting to screen proposed associated structures.	Heavy standard tree plantings have been planted and well established along the road and to screen the structures and enhance the environment.	Site photos refer to Appendix 1-3
OM4	Design/ Construction Planning	Reinstatement / Restoration of disturbed area.	The disturbed area within the works boundary has been reinstated with heavy standard trees planting according to the compensatory planting proposal to DLO or reinstated to its original condition.	Site photos refer to Appendix 1-4

- OM1:** assessing the effectiveness of the aesthetic design of the façade, chimneys of STF and associated structures (including the establishment of the plantings on pergola) to harmonize with the settings.
- OM2:** assessing the effectiveness of the climbing planting (along the boundary fence wall) to soften the proposed structures
- OM3:** assessing the conditions of tree according to the site record, for its effectiveness to screen the proposed associated structures.
- OM4:** assessing the effectiveness on the reinstatement / restoration of disturbed area (mainly refer to the temporary works area). The reinstatement / restoration includes area either reinstated with heavy standard trees planting, or reinstated back to its original condition once the construction activities have been completed.

## Appendix I Photographic Record

### 1. Photographic record of main building and climber planting on pergola



The climber planting on pergola is being established to soften edge the structural element.



The main building is now more sinuously profiled with an elegant and pleasing form and more sympathetic to the environment. The used of recessive colors results in scheme which is less visually prominent.

## 2. Photographic record of climbing planting



The proposed climbing planting along the boundary fence wall is being established.

### 3. Photographic record of the buffer trees



Heavy standard tree plantings have been planted and well established along the entrance road to screen the structures and enhance the environment.





**4. Photographic record of reinstated area**



The disturbed area has been reinstated with heavy standard tree planting.  
The trees are being established

**August 2015**

**Monthly EM & A Record for Landscape and Visual Impact**  
**(August 2015)**

Prepared By:  
**ADI Limited**



### Monthly EM & A Record for Landscape and Visual Impact

The landscape and visual impact assessment of the EIA Study recommended a series of mitigation measures to ameliorate the landscape and visual impacts of the Project. The measures for the operation phase as recommended in the EIA Report are summarized in Table 1.1.

Observation of the implementation of proposed landscape and visual mitigation measures are summarized in Table 1.1.

**Table 1.1 Record of Implementation of the Proposed Landscape and Visual Mitigation Measures in Operation Phase (August 2015)**

ID No.	Nature / Type	Landscape and Visual Mitigation Measures	Status (August 2015)	Remarks
OM1	Design/ Construction Planning	Aesthetic design of the façade, chimneys of STF and associated structures to harmonize with the settings.	The development to the design of the facade has improved upon the aesthetic aspects of the scheme from a landscape and contextual perspective. The chimneys of STF used to be a separate element, but it is now part of the building and is much more coordinated. Also, the main building is now more sinuously profiled with an elegant and pleasing form and more sympathetic to the environment. The trellis roof profile also sits more sympathetically	Site photos refer to Appendix 1-1. Climber plantings on pergola are being established.

ID No.	Nature / Type	Landscape and Visual Mitigation Measures	Status (August 2015)	Remarks
			with the peaks and mounds of the surrounding mountainous terrain. The used of recessive colors results in scheme which is less visually prominent.	
OM2	Design/ Construction Planning	Shrub and climbing planting to soften proposed structures.	The proposed climbing planting along the boundary fence wall is being established.	Site photos refer to Appendix 1-2
OM3	Design/ Construction Planning	Heavy standard tree planting to screen proposed associated structures.	Heavy standard tree plantings have been planted and well established along the road and to screen the structures and enhance the environment.	Site photos refer to Appendix 1-3 Majority of trees are in good condition.
OM4	Design/ Construction Planning	Reinstatement / Restoration of disturbed area.	The disturbed area within the works boundary has been reinstated with heavy standard trees planting according to the compensatory planting proposal to DLO or reinstated to its original condition.	Site photos refer to Appendix 1-4 Majority of trees are in good condition.

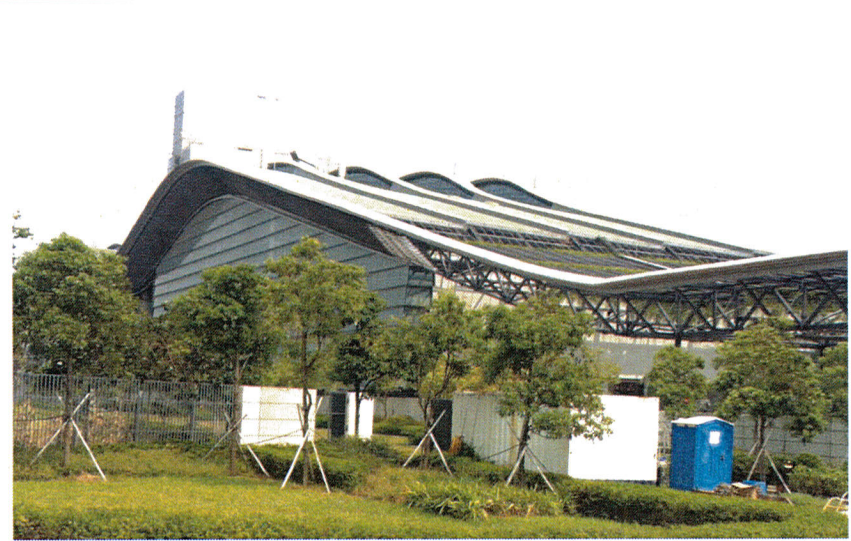
- OM1:** assessing the effectiveness of the aesthetic design of the façade, chimneys of STF and associated structures (including the establishment of the plantings on pergola) to harmonize with the settings.
- OM2:** assessing the effectiveness of the climbing planting (along the boundary fence wall) to soften the proposed structures
- OM3:** assessing the conditions of tree according to the site record, for its effectiveness to screen the proposed associated structures.
- OM4:** assessing the effectiveness on the reinstatement / restoration of disturbed area (mainly refer to the temporary works area). The reinstatement / restoration includes area either reinstated with heavy standard trees planting, or reinstated back to its original condition once the construction activities have been completed.

## Appendix I Photographic Record

### 1. Photographic record of main building and climber planting on pergola



The climber planting on pergola is being established to soften edge the structural element.



The trellis roof profile sits more sympathetically with the peaks and mounds of the surrounding mountainous terrain. The used of recessive colors results in scheme which is less visually prominent.

## 2. Photographic record of climbing planting



The proposed climbing planting along the boundary fence wall is being established.



### 3. Photographic record of the buffer trees



Heavy standard tree plantings have been planted and well established along the entrance road to screen the structures and enhance the environment.

**4. Photographic record of reinstated area**



The disturbed area has been reinstated with heavy standard tree planting.  
The trees are being established

**September 2015**

**Monthly EM & A Record for Landscape and Visual Impact**  
**(September 2015)**

Prepared By:  
**ADI Limited**



### Monthly EM & A Record for Landscape and Visual Impact

The landscape and visual impact assessment of the EIA Study recommended a series of mitigation measures to ameliorate the landscape and visual impacts of the Project. The measures for the operation phase as recommended in the EIA Report are summarized in Table 1.1.

Observation of the implementation of proposed landscape and visual mitigation measures are summarized in Table 1.1.

**Table 1.1 Record of Implementation of the Proposed Landscape and Visual Mitigation Measures in Operation Phase (September 2015)**

ID No.	Nature / Type	Landscape and Visual Mitigation Measures	Status (September 2015)	Remarks
OM1	Design/ Construction Planning	Aesthetic design of the façade, chimneys of STF and associated structures to harmonize with the settings.	The development to the design of the facade has improved upon the aesthetic aspects of the scheme from a landscape and contextual perspective. The chimneys of STF used to be a separate element, but it is now part of the building and is much more coordinated. Also, the main building is now more sinuously profiled with an elegant and pleasing form and more sympathetic to the environment. The trellis roof profile also sits more sympathetically	Site photos refer to Appendix 1-1. The climber plantings on pergola is being established.

ID No.	Nature / Type	Landscape and Visual Mitigation Measures	Status (September 2015)	Remarks
			with the peaks and mounds of the surrounding mountainous terrain. The used of recessive colors results in scheme which is less visually prominent.	
OM2	Design/ Construction Planning	Shrub and climbing planting to soften proposed structures.	The proposed climbing planting along the boundary fence wall is being established.	Site photos refer to Appendix 1-2 Climbing plantings are in good condition.
OM3	Design/ Construction Planning	Heavy standard tree planting to screen proposed associated structures.	Heavy standard tree plantings have been planted and well established along the road and to screen the structures and enhance the environment.	Site photos refer to Appendix 1-3 Most of trees are in good condition.
OM4	Design/ Construction Planning	Reinstatement / Restoration of disturbed area.	The disturbed area within the works boundary has been reinstated with heavy standard trees planting according to the compensatory planting proposal to DLO or reinstated to its original condition.	Site photos refer to Appendix 1-4 Most of trees are in good condition.

- OM1:** assessing the effectiveness of the aesthetic design of the façade, chimneys of STF and associated structures (including the establishment of the plantings on pergola) to harmonize with the settings.
- OM2:** assessing the effectiveness of the climbing planting (along the boundary fence wall) to soften the proposed structures
- OM3:** assessing the conditions of tree according to the site record, for its effectiveness to screen the proposed associated structures.
- OM4:** assessing the effectiveness on the reinstatement / restoration of disturbed area (mainly refer to the temporary works area). The reinstatement / restoration includes area either reinstated with heavy standard trees planting, or reinstated back to its original condition once the construction activities have been completed.

## Appendix I Photographic Record

### 1. Photographic record of main building and climber planting on pergola



The climber planting on pergola is being established to soften edge the structural element.



The trellis roof profile sits more sympathetically with the peaks and mounds of the surrounding mountainous terrain. The used of recessive colors results in scheme which is less visually prominent.



## 2. Photographic record of climbing planting

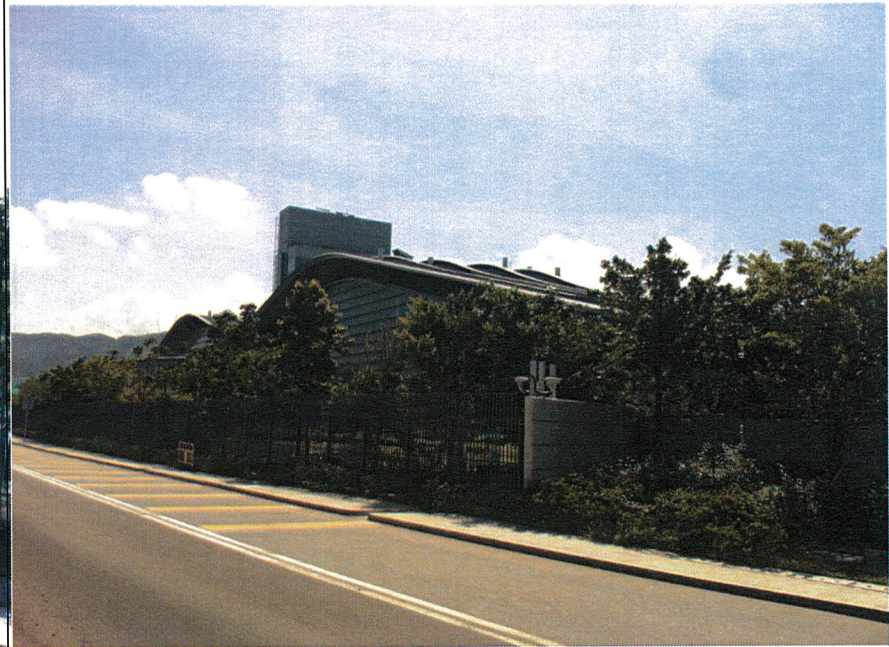


The proposed climbing planting along the boundary fence wall is being established.

### 3. Photographic record of the buffer trees



Heavy standard tree plantings have been planted and well established along the entrance road to screen the structures and enhance the environment.



#### 4. Photographic record of reinstated area

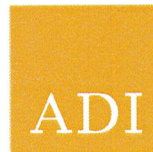


The disturbed area has been reinstated with heavy standard tree planting.  
The trees are being established

**October 2015**

**Monthly EM & A Record for Landscape and Visual Impact**  
**(October 2015)**

Prepared By:  
**ADI Limited**



### Monthly EM & A Record for Landscape and Visual Impact

The landscape and visual impact assessment of the EIA Study recommended a series of mitigation measures to ameliorate the landscape and visual impacts of the Project. The measures for the operation phase as recommended in the EIA Report are summarized in Table 1.1.

Observation of the implementation of proposed landscape and visual mitigation measures are summarized in Table 1.1.

**Table 1.1 Record of Implementation of the Proposed Landscape and Visual Mitigation Measures in Operation Phase (October 2015)**

ID No.	Nature / Type	Landscape and Visual Mitigation Measures	Status (October 2015)	Remarks
OM1	Design/ Construction Planning	Aesthetic design of the façade, chimneys of STF and associated structures to harmonize with the settings.	The development to the design of the facade has improved upon the aesthetic aspects of the scheme from a landscape and contextual perspective. The chimneys of STF used to be a separate element, but it is now part of the building and is much more coordinated. Also, the main building is now more sinuously profiled with an elegant and pleasing form and more sympathetic to the environment. The trellis roof profile also sits more sympathetically	Site photos refer to Appendix 1-1. The climber planting on pergola are well established.

ID No.	Nature / Type	Landscape and Visual Mitigation Measures	Status (October 2015)	Remarks
			with the peaks and mounds of the surrounding mountainous terrain. The used of recessive colors results in scheme which is less visually prominent.	
OM2	Design/ Construction Planning	Shrub and climbing planting to soften proposed structures.	The proposed climbing planting along the boundary fence wall is being established.	Site photos refer to Appendix 1-2 Shrubs and climbing plantings are in good condition.
OM3	Design/ Construction Planning	Heavy standard tree planting to screen proposed associated structures.	Heavy standard tree plantings have been planted and well established along the road and to screen the structures and enhance the environment.	Site photos refer to Appendix 1-3 Most of trees are in good condition and provided a good screening effect.
OM4	Design/ Construction Planning	Reinstatement / Restoration of disturbed area.	The disturbed area within the works boundary has been reinstated with heavy standard trees planting according to the compensatory planting proposal to DLO or reinstated to its original condition.	Site photos refer to Appendix 1-4 Most of trees are in good condition.

- OM1:** assessing the effectiveness of the aesthetic design of the façade, chimneys of STF and associated structures (including the establishment of the plantings on pergola) to harmonize with the settings.
- OM2:** assessing the effectiveness of the climbing planting (along the boundary fence wall) to soften the proposed structures
- OM3:** assessing the conditions of tree according to the site record, for its effectiveness to screen the proposed associated structures.
- OM4:** assessing the effectiveness on the reinstatement / restoration of disturbed area (mainly refer to the temporary works area). The reinstatement / restoration includes area either reinstated with heavy standard trees planting, or reinstated back to its original condition once the construction activities have been completed.



## Appendix I Photographic Record

### 1. Photographic record of main building and climber planting on pergola



The climber planting on pergola is being established to soften edge the structural element.



The main building is now more sinuously profiled with an elegant and pleasing form and more sympathetic to the environment. The used of recessive colors results in scheme which is less visually prominent.

**2. Photographic record of climbing planting**



The proposed climbing planting along the boundary fence wall is being established.

### 3. Photographic record of the buffer trees



Heavy standard tree plantings have been planted and well established along the entrance road to screen the structures and enhance the environment.



**4. Photographic record of reinstated area**



The disturbed area has been reinstated with heavy standard tree planting.  
The trees are being established

**November 2015**

**Monthly EM & A Record for Landscape and Visual Impact  
(November 2015)**

Prepared By:  
**ADI Limited**



### Monthly EM & A Record for Landscape and Visual Impact

The landscape and visual impact assessment of the EIA Study recommended a series of mitigation measures to ameliorate the landscape and visual impacts of the Project. The measures for the operation phase as recommended in the EIA Report are summarized in Table 1.1.

Observation of the implementation of proposed landscape and visual mitigation measures are summarized in Table 1.1.

**Table 1.1 Record of Implementation of the Proposed Landscape and Visual Mitigation Measures in Operation Phase (November 2015)**

ID No.	Nature / Type	Landscape and Visual Mitigation Measures	Status (November 2015)	Remarks
OM1	Design/ Construction Planning	Aesthetic design of the façade, chimneys of STF and associated structures to harmonize with the settings.	The development to the design of the facade has improved upon the aesthetic aspects of the scheme from a landscape and contextual perspective. The chimneys of STF used to be a separate element, but it is now part of the building and is much more coordinated. Also, the main building is now more sinuously profiled with an elegant and pleasing form and more sympathetic to the environment. The trellis roof profile also sits more sympathetically	Site photos refer to Appendix 1-1.

ID No.	Nature / Type	Landscape and Visual Mitigation Measures	Status (November 2015)	Remarks
			with the peaks and mounds of the surrounding mountainous terrain. The used of recessive colors results in scheme which is less visually prominent.	
OM2	Design/ Construction Planning	Shrub and climbing planting to soften proposed structures.	The proposed climbing planting along the boundary fence wall is being established.	Site photos refer to Appendix 1-2. Shrubs and climbing plantings are in good condition.
OM3	Design/ Construction Planning	Heavy standard tree planting to screen proposed associated structures.	Heavy standard tree plantings have been planted and well established along the road and to screen the structures and enhance the environment.	Site photos refer to Appendix 1-3 Most of trees are in good condition.
OM4	Design/ Construction Planning	Reinstatement / Restoration of disturbed area.	The disturbed area within the works boundary has been reinstated with heavy standard trees planting according to the compensatory planting proposal to DLO or reinstated to its original condition.	Site photos refer to Appendix 1-4 Most of trees are in good condition.



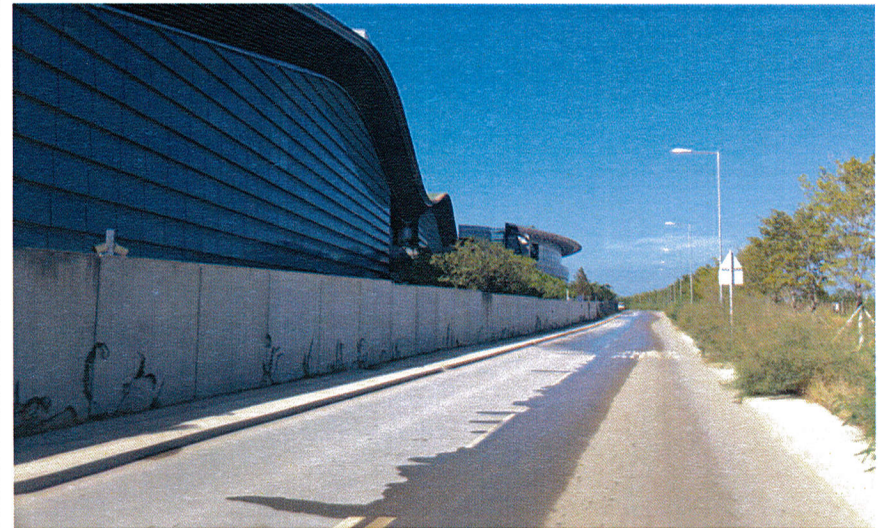
- OM1:** assessing the effectiveness of the aesthetic design of the façade, chimneys of STF and associated structures (including the establishment of the plantings on pergola) to harmonize with the settings.
- OM2:** assessing the effectiveness of the climbing planting (along the boundary fence wall) to soften the proposed structures
- OM3:** assessing the conditions of tree according to the site record, for its effectiveness to screen the proposed associated structures.
- OM4:** assessing the effectiveness on the reinstatement / restoration of disturbed area (mainly refer to the temporary works area). The reinstatement / restoration includes area either reinstated with heavy standard trees planting, or reinstated back to its original condition once the construction activities have been completed.

## Appendix I Photographic Record

### 1. Photographic record of main building and climber planting on pergola



The climber planting on pergola is being established to soften edge the structural element.



The main building is now more sinuously profiled with an elegant and pleasing form and more sympathetic to the environment. The used of recessive colors results in scheme which is less visually prominent.

**2. Photographic record of climbing planting**



The proposed climbing planting along the boundary fence wall is being established.

### 3. Photographic record of the buffer trees



Heavy standard tree plantings have been planted and well established along the entrance road to screen the structures and enhance the environment.



**4. Photographic record of reinstated area**



The disturbed area has been reinstated with heavy standard tree planting.  
The trees are being established

**December 2015**

**Monthly EM & A Record for Landscape and Visual Impact  
(December 2015)**

Prepared By:  
**ADI Limited**



### Monthly EM & A Record for Landscape and Visual Impact

The landscape and visual impact assessment of the EIA Study recommended a series of mitigation measures to ameliorate the landscape and visual impacts of the Project. The measures for the operation phase as recommended in the EIA Report are summarized in Table 1.1.

Observation of the implementation of proposed landscape and visual mitigation measures are summarized in Table 1.1.

**Table 1.1 Record of Implementation of the Proposed Landscape and Visual Mitigation Measures in Operation Phase (December 2015)**

ID No.	Nature / Type	Landscape and Visual Mitigation Measures	Status (December 2015)	Remarks
OM1	Design/ Construction Planning	Aesthetic design of the façade, chimneys of STF and associated structures to harmonize with the settings.	The development to the design of the facade has improved upon the aesthetic aspects of the scheme from a landscape and contextual perspective. The chimneys of STF used to be a separate element, but it is now part of the building and is much more coordinated. Also, the main building is now more sinuously profiled with an elegant and pleasing form and more sympathetic to the environment. The trellis roof profile also sits more sympathetically	Site photos refer to Appendix 1-1. Climber planting on pergola are well established.



ID No.	Nature / Type	Landscape and Visual Mitigation Measures	Status (December 2015)	Remarks
			with the peaks and mounds of the surrounding mountainous terrain. The used of recessive colors results in scheme which is less visually prominent.	
OM2	Design/ Construction Planning	Shrub and climbing planting to soften proposed structures.	The proposed climbing planting along the boundary fence wall is being established.	Site photos refer to Appendix 1-2
OM3	Design/ Construction Planning	Heavy standard tree planting to screen proposed associated structures.	Heavy standard tree plantings have been planted and well established along the road and to screen the structures and enhance the environment.	Site photos refer to Appendix 1-3 Proper maintenance works are conducted during dry season, Most of trees are in good condition.
OM4	Design/ Construction Planning	Reinstatement / Restoration of disturbed area.	The disturbed area within the works boundary has been reinstated with heavy standard trees planting according to the compensatory planting proposal to DLO or reinstated to its original condition.	Site photos refer to Appendix 1-4 Proper maintenance works are conducted during dry season, Most of trees are in good condition.

- OM1:** assessing the effectiveness of the aesthetic design of the façade, chimneys of STF and associated structures (including the establishment of the plantings on pergola) to harmonize with the settings.
- OM2:** assessing the effectiveness of the climbing planting (along the boundary fence wall) to soften the proposed structures
- OM3:** assessing the conditions of tree according to the site record, for its effectiveness to screen the proposed associated structures.
- OM4:** assessing the effectiveness on the reinstatement / restoration of disturbed area (mainly refer to the temporary works area). The reinstatement / restoration includes area either reinstated with heavy standard trees planting, or reinstated back to its original condition once the construction activities have been completed.

## Appendix I Photographic Record

### 1. Photographic record of main building and climber planting on pergola



The climber planting on pergola is being established to soften edge the structural element.



The main building is now more sinuously profiled with an elegant and pleasing form and more sympathetic to the environment. The used of recessive colors results in scheme which is less visually prominent.

**2. Photographic record of climbing planting**



The proposed climbing planting along the boundary fence wall is being established.

### 3. Photographic record of the buffer trees



Heavy standard tree plantings have been planted and well established along the entrance road to screen the structures and enhance the environment.

#### 4. Photographic record of reinstated area

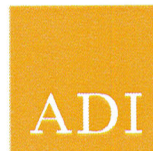


The disturbed area has been reinstated with heavy standard tree planting.  
The trees are being established

**January 2016**

**Monthly EM & A Record for Landscape and Visual Impact**  
**(January 2016)**

Prepared By:  
**ADI Limited**





**Monthly EM & A Record for Landscape and Visual Impact**

The landscape and visual impact assessment of the EIA Study recommended a series of mitigation measures to ameliorate the landscape and visual impacts of the Project. The measures for the operation phase as recommended in the EIA Report are summarized in Table 1.1.

Observation of the implementation of proposed landscape and visual mitigation measures are summarized in Table 1.1.

**Table 1.1 Record of Implementation of the Proposed Landscape and Visual Mitigation Measures in Operation Phase (January 2016)**

ID No.	Nature / Type	Landscape and Visual Mitigation Measures	Status (January 2016)	Remarks
OM1	Design/ Construction Planning	Aesthetic design of the façade, chimneys of STF and associated structures to harmonize with the settings.	The development to the design of the facade has improved upon the aesthetic aspects of the scheme from a landscape and contextual perspective. The chimneys of STF used to be a separate element, but it is now part of the building and is much more coordinated. Also, the main building is now more sinuously profiled with an elegant and pleasing form and more sympathetic to the environment. The trellis roof profile also sits more sympathetically	Site photos refer to Appendix 1-1.

ID No.	Nature / Type	Landscape and Visual Mitigation Measures	Status (January 2016)	Remarks
			with the peaks and mounds of the surrounding mountainous terrain. The used of recessive colors results in scheme which is less visually prominent.	
OM2	Design/ Construction Planning	Shrub and climbing planting to soften proposed structures.	The proposed climbing planting along the boundary fence wall is being established.	Site photos refer to Appendix 1-2 Seasonal color change of climbing plantings provided visual interest.
OM3	Design/ Construction Planning	Heavy standard tree planting to screen proposed associated structures.	Heavy standard tree plantings have been planted and well established along the road and to screen the structures and enhance the environment.	Site photos refer to Appendix 1-3 Proper maintenance works are conducted during dry season. Most of trees are in good condition.
OM4	Design/ Construction Planning	Reinstatement / Restoration of disturbed area.	The disturbed area within the works boundary has been reinstated with heavy standard trees planting according to the compensatory planting proposal to DLO or reinstated to its original condition.	Site photos refer to Appendix 1-4 Proper maintenance works are conducted during dry season including pruning. Most of trees are in good condition.

- OM1:** assessing the effectiveness of the aesthetic design of the façade, chimneys of STF and associated structures (including the establishment of the plantings on pergola) to harmonize with the settings.
- OM2:** assessing the effectiveness of the climbing planting (along the boundary fence wall) to soften the proposed structures
- OM3:** assessing the conditions of tree according to the site record, for its effectiveness to screen the proposed associated structures.
- OM4:** assessing the effectiveness on the reinstatement / restoration of disturbed area (mainly refer to the temporary works area). The reinstatement / restoration includes area either reinstated with heavy standard trees planting, or reinstated back to its original condition once the construction activities have been completed.

## Appendix I Photographic Record

### 1. Photographic record of main building and climber planting on pergola



The climber planting on pergola is being established to soften edge the structural element.



The main building is now more sinuously profiled with an elegant and pleasing form and more sympathetic to the environment. The used of recessive colors results in scheme which is less visually prominent.

## 2. Photographic record of climbing planting



The proposed climbing planting along the boundary fence wall is being established.

### 3. Photographic record of the buffer trees



Heavy standard tree plantings have been planted and well established along the entrance road to screen the structures and enhance the environment.



#### 4. Photographic record of reinstated area



The disturbed area has been reinstated with heavy standard tree planting.  
The trees are being established

**February 2016**



**Monthly EM & A Record for Landscape and Visual Impact  
(February 2016)**

Prepared By:  
**ADI Limited**



### Monthly EM & A Record for Landscape and Visual Impact

The landscape and visual impact assessment of the EIA Study recommended a series of mitigation measures to ameliorate the landscape and visual impacts of the Project. The measures for the operation phase as recommended in the EIA Report are summarized in Table 1.1.

Observation of the implementation of proposed landscape and visual mitigation measures are summarized in Table 1.1.

**Table 1.1 Record of Implementation of the Proposed Landscape and Visual Mitigation Measures in Operation Phase (February 2016)**

ID No.	Nature / Type	Landscape and Visual Mitigation Measures	Status (February 2016)	Remarks
OM1	Design/ Construction Planning	Aesthetic design of the façade, chimneys of STF and associated structures to harmonize with the settings.	The development to the design of the facade has improved upon the aesthetic aspects of the scheme from a landscape and contextual perspective. The chimneys of STF used to be a separate element, but it is now part of the building and is much more coordinated. Also, the main building is now more sinuously profiled with an elegant and pleasing form and more sympathetic to the environment. The trellis roof profile also sits more sympathetically	Site photos refer to Appendix 1-1.

ID No.	Nature / Type	Landscape and Visual Mitigation Measures	Status (February 2016)	Remarks
			with the peaks and mounds of the surrounding mountainous terrain. The used of recessive colors results in scheme which is less visually prominent.	
OM2	Design/ Construction Planning	Shrub and climbing planting to soften proposed structures.	The proposed climbing planting along the boundary fence wall is being established.	Site photos refer to Appendix 1-2 Seasonal color change of climbing plantings provided visual interest.
OM3	Design/ Construction Planning	Heavy standard tree planting to screen proposed associated structures.	Heavy standard tree plantings have been planted and well established along the road and to screen the structures and enhance the environment.	Site photos refer to Appendix 1-3 Proper maintenance works are conducted during dry season, Most of trees are in good condition.
OM4	Design/ Construction Planning	Reinstatement / Restoration of disturbed area.	The disturbed area within the works boundary has been reinstated with heavy standard trees planting according to the compensatory planting proposal to DLO or reinstated to its original condition.	Site photos refer to Appendix 1-4. Proper maintenance works are conducted during dry season, Most of trees are in good condition.

- OM1:** assessing the effectiveness of the aesthetic design of the façade, chimneys of STF and associated structures (including the establishment of the plantings on pergola) to harmonize with the settings.
- OM2:** assessing the effectiveness of the climbing planting (along the boundary fence wall) to soften the proposed structures
- OM3:** assessing the conditions of tree according to the site record, for its effectiveness to screen the proposed associated structures.
- OM4:** assessing the effectiveness on the reinstatement / restoration of disturbed area (mainly refer to the temporary works area). The reinstatement / restoration includes area either reinstated with heavy standard trees planting, or reinstated back to its original condition once the construction activities have been completed.

## Appendix I Photographic Record

### 1. Photographic record of main building and climber planting on pergola



The main building is now more sinuously profiled with an elegant and pleasing form and more sympathetic to the environment. The used of recessive colors results in scheme which is less visually prominent.

**2. Photographic record of climbing planting**



The proposed climbing planting along the boundary fence wall is being established.

### 3. Photographic record of the buffer trees



Heavy standard tree plantings have been planted and well established along the entrance road to screen the structures and enhance the environment.



#### 4. Photographic record of reinstated area



The disturbed area has been reinstated with heavy standard tree planting.  
The trees are being established



**March 2016**

**Monthly EM & A Record for Landscape and Visual Impact  
(March 2016)**

Prepared By:  
**ADI Limited**



### Monthly EM & A Record for Landscape and Visual Impact

The landscape and visual impact assessment of the EIA Study recommended a series of mitigation measures to ameliorate the landscape and visual impacts of the Project. The measures for the operation phase as recommended in the EIA Report are summarized in Table 1.1.

Observation of the implementation of proposed landscape and visual mitigation measures are summarized in Table 1.1.

**Table 1.1 Record of Implementation of the Proposed Landscape and Visual Mitigation Measures in Operation Phase (March 2016)**

ID No.	Nature / Type	Landscape and Visual Mitigation Measures	Status (March 2016)	Remarks
OM1	Design/ Construction Planning	Aesthetic design of the façade, chimneys of STF and associated structures to harmonize with the settings.	The development to the design of the facade has improved upon the aesthetic aspects of the scheme from a landscape and contextual perspective. The chimneys of STF used to be a separate element, but it is now part of the building and is much more coordinated. Also, the main building is now more sinuously profiled with an elegant and pleasing form and more sympathetic to the environment. The	Site photos refer to Appendix 1-1.

ID No.	Nature / Type	Landscape and Visual Mitigation Measures	Status (March 2016)	Remarks
			trellis roof profile also sits more sympathetically with the peaks and mounds of the surrounding mountainous terrain. The used of recessive colors results in scheme which is less visually prominent.	
OM2	Design/ Construction Planning	Shrub and climbing planting to soften proposed structures.	The proposed climbing planting along the boundary fence wall is being established.	Site photos refer to Appendix 1-2. The climber plantings already covered approximately 50% surface area of the fence wall.
OM3	Design/ Construction Planning	Heavy standard tree planting to screen proposed associated structures.	Heavy standard tree plantings have been planted and well established along the road and to screen the structures and enhance the environment.	Site photos refer to Appendix 1-3 Majority of trees are in good condition.
OM4	Design/ Construction Planning	Reinstatement / Restoration of disturbed area.	The disturbed area within the works boundary has been reinstated with heavy standard trees planting according to the compensatory planting proposal to DLO or reinstated to its original condition.	Site photos refer to Appendix 1-4. Guying and sticks for most of trees are removed.

- OM1:** assessing the effectiveness of the aesthetic design of the façade, chimneys of STF and associated structures (including the establishment of the plantings on pergola) to harmonize with the settings.
- OM2:** assessing the effectiveness of the climbing planting (along the boundary fence wall) to soften the proposed structures
- OM3:** assessing the conditions of tree according to the site record, for its effectiveness to screen the proposed associated structures.
- OM4:** assessing the effectiveness on the reinstatement / restoration of disturbed area (mainly refer to the temporary works area). The reinstatement / restoration includes area either reinstated with heavy standard trees planting, or reinstated back to its original condition once the construction activities have been completed.

## Appendix I Photographic Record

### 1. Photographic record of main building and climber planting on pergola



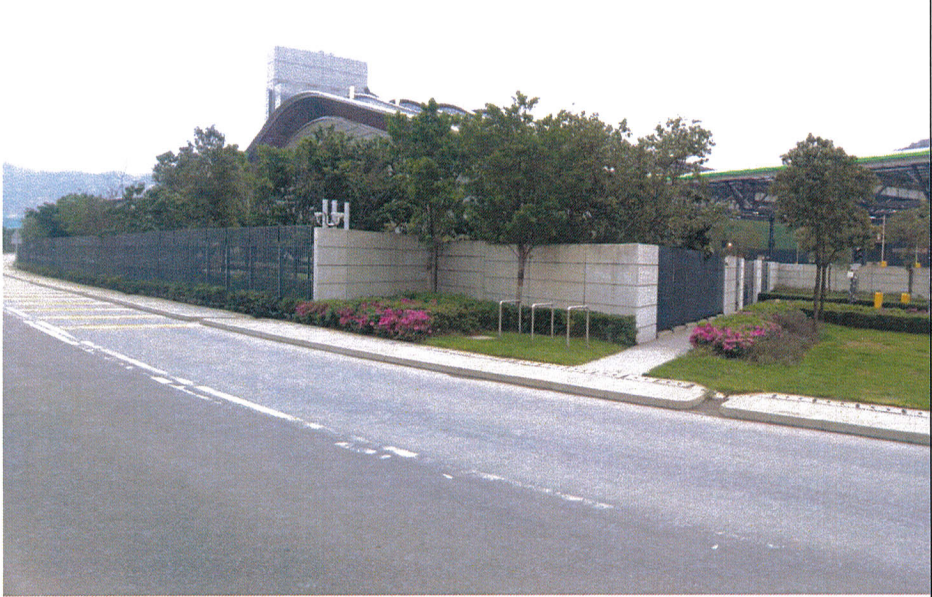
The trellis roof profile sits more sympathetically with the peaks and mounds of the surrounding mountainous terrain. The used of recessive colors results in scheme which is less visually prominent.

## 2. Photographic record of climbing planting



The proposed climbing planting along the boundary fence wall is being established.

### 3. Photographic record of the buffer trees



Heavy standard tree plantings have been planted and well established along the entrance road to screen the structures and enhance the environment.



#### 4. Photographic record of reinstated area



The disturbed area has been reinstated with heavy standard tree planting.  
The trees are being established

**April 2016**

**Monthly EM & A Record for Landscape and Visual Impact  
(April 2016)**

Prepared By:  
**ADI Limited**



### Monthly EM & A Record for Landscape and Visual Impact

The landscape and visual impact assessment of the EIA Study recommended a series of mitigation measures to ameliorate the landscape and visual impacts of the Project. The measures for the operation phase as recommended in the EIA Report are summarized in Table 1.1.

Observation of the implementation of proposed landscape and visual mitigation measures are summarized in Table 1.1.

**Table 1.1 Record of Implementation of the Proposed Landscape and Visual Mitigation Measures in Operation Phase (April 2016)**

ID No.	Nature / Type	Landscape and Visual Mitigation Measures	Status (April 2016)	Remarks
OM1	Design/ Construction Planning	Aesthetic design of the façade, chimneys of STF and associated structures to harmonize with the settings.	The development to the design of the facade has improved upon the aesthetic aspects of the scheme from a landscape and contextual perspective. The chimneys of STF used to be a separate element, but it is now part of the building and is much more coordinated. Also, the main building is now more sinuously profiled with an elegant and pleasing form and more sympathetic to the environment. The trellis roof profile also sits more sympathetically	Site photos refer to Appendix 1-1. The climber planting are well established on the pergola.

ID No.	Nature / Type	Landscape and Visual Mitigation Measures	Status (April 2016)	Remarks
			with the peaks and mounds of the surrounding mountainous terrain. The used of recessive colors results in scheme which is less visually prominent.	
OM2	Design/ Construction Planning	Shrub and climbing planting to soften proposed structures.	The proposed climbing planting along the boundary fence wall is being established.	Site photos refer to Appendix 1-2 Majority of shrubs and climbing planting are in good condition.
OM3	Design/ Construction Planning	Heavy standard tree planting to screen proposed associated structures.	Heavy standard tree plantings have been planted and well established along the road and to screen the structures and enhance the environment.	Site photos refer to Appendix 1-3 Majority of trees are in good condition.
OM4	Design/ Construction Planning	Reinstatement / Restoration of disturbed area.	The disturbed area within the works boundary has been reinstated with heavy standard trees planting according to the compensatory planting proposal to DLO or reinstated to its original condition.	Site photos refer to Appendix 1-4 Majority of trees are in good condition.

**OM1:** assessing the effectiveness of the aesthetic design of the façade, chimneys of STF and associated structures (including the establishment of the plantings on pergola) to harmonize with the settings.

**OM2:** assessing the effectiveness of the climbing planting (along the boundary fence wall) to soften the proposed structures

**OM3:** assessing the conditions of tree according to the site record, for its effectiveness to screen the proposed associated structures.

**OM4:** assessing the effectiveness on the reinstatement / restoration of disturbed area (mainly refer to the temporary works area). The reinstatement / restoration includes area either reinstated with heavy standard trees planting, or reinstated back to its original condition once the construction activities have been completed.

## Appendix I Photographic Record

### 1. Photographic record of main building and climber planting on pergola



The trellis roof profile sits more sympathetically with the peaks and mounds of the surrounding mountainous terrain. The used of recessive colors results in scheme which is less visually prominent.

## 2. Photographic record of climbing planting



The proposed climbing planting along the boundary fence wall is being established.



### 3. Photographic record of the buffer trees



Heavy standard tree plantings have been planted and well established along the entrance road to screen the structures and enhance the environment.

#### 4. Photographic record of reinstated area



The disturbed area has been reinstated with heavy standard tree planting.

The trees are well established