



中國港灣工程有限責任公司

香港代表：振華工程有限公司

CHINA HARBOUR ENGINEERING COMPANY LIMITED  
HONG KONG REPRESENTATIVE: ZHEN HUA ENGINEERING CO., LTD.

Date : 17 June 2016  
Our Ref. : CHEC300/OUT/2016/06/04.05/010166

By Hand

AECOM Asia Company Limited  
8/F Grand Central Plaza  
Tower 2, 138 Shatin Rural Committee Road  
Shatin, Hong Kong

Attn: **Mr. Michael Tovey**  
**The Engineer's Representative**

Dear Sir,

**Contract No. HY/2013/03**  
**Hong Kong-Zhuhai-Macao Bridge Hong Kong Boundary Crossing Facilities – Vehicle Clearance Plazas and Ancillary Buildings and Facilities**  
**EP Condition 5.4 – Monthly EM&A Report (May 2016)**

Pursuant to the Condition 5.4 of the EP-353/2009/K, we are pleased to submit one soft copy and three copies of the certified Monthly EM&A Report (Rev.2) for May 2016 for your on-ward submission.

Thank you for your kind attention.

Yours faithfully,  
For and on behalf of  
**China Harbour Engineering Co. Ltd.**

  
Paul PUI  
Site Agent

PP/FH/MC/VM/DW/mt

Encl.

17 June 2016

By Fax (3468 2076) and By Post

AECOM Asia Co. Ltd.  
The PRE's Office  
5 Ying Hei Road, Tung Chung, Lantau  
Hong Kong

Attention: Mr. Michael Tovey

Dear Sir,

**Re: Agreement No. CE 48/2011 (EP)  
Environmental Project Office for the  
HZMB Hong Kong Link Road, HZMB Hong Kong Boundary Crossing Facilities,  
and Tuen Mun-Chek Lap Kok Link – Investigation**

**Contract No. HY/2013/03 – HZMB HKBCF – Vehicle Clearance Plazas and  
Ancillary Buildings and Facilities  
Monthly Environmental Monitoring & Audit Report for May 2016**

Reference is made to the Environmental Team's submission of Monthly Environmental Monitoring & Audit Report for May 2016 (Rev. 2) certified by the ET Leader (ET's ref.: "MCL/ED/0341/2016/C" dated 16 June 2016) and provided to us via e-mail on 17 June 2016.

We are pleased to inform you that we have no adverse comment on the captioned submission. We write to verify the captioned submission in accordance with Condition 5.4 of the Environmental Permit No. EP-353/2009/K.

The Contractor and Environmental Team are reminded to pay close attention on implementation of Regular Marine Traffic Routes Plan and timely submission of required records to relevant parties in accordance with the plan.

Thank you very much for your attention and please feel free to contact the undersigned should you require further information.

Yours faithfully,  
For and on behalf of  
Ramboll Environ Hong Kong Limited



Raymond Dai  
Independent Environmental Checker

c.c.	HyD	Mr. Matthew Fung	(By Fax: 3188 6614)
	HyD	Mr. Ken Woo	(By Fax: 3188 6614)
	MCL	Mr. Arthur Cheng	(By Fax: 2450 8032)
	CHEC	Mr. Johnason Ko	(By Fax: 2887 3014)

Internal: DY, YH, ENPO Site

Q:\Projects\HYDHZMBEEM00\02\_Proj\_Mgt\02\_Corr\HYDHZMBEEM00\_0\_4292L.16.doc

## MATERIALAB CONSULTANTS LIMITED

Room 723 & 725, 7/F, Block B,  
Profit Industrial Building,  
1-15 Kwai Fung Crescent, Kwai Fong,  
Hong Kong  
Tel : +852-2450 8238  
Fax : +852-2450 8032  
E-mail : mcl@fugro.com.hk  
Website : www.materialab-consultant.com

Date 16 June 2016  
Our Ref. MCL/ED/0341/2016/C

Ramboll Environ Hong Kong Limited  
(formerly ENVIRON Hong Kong Limited)  
Room 2403, 24/F, Jubilee Centre,  
18 Fenwick Street, Wan Chai,  
Hong Kong

BY HAND

Attn.: Mr. Raymond Dai, IEC

Dear Sir,

**EP Condition 5.4 – Monthly EM&A Report for  
Hong Kong-Zhuhai-Macao Bridge Hong Kong Boundary Crossing Facilities –  
Vehicle Clearance Plazas and Ancillary Buildings and Facilities (Contract No. HY/2013/03)**

Pursuant to Condition 5.4 of the Environmental Permit (EP-353/2009/K) for the captioned project, we are pleased to submit the certified Monthly EM&A Report for May 2016 (Rev.2) for your verification.

Should you require further information, please do not hesitate to contact our Miss Sandra Pang at 3565 4156 or the undersigned at 3565 4115.

Yours faithfully,  
for and on behalf of  
MATERIALAB CONSULTANTS LIMITED

  
\_\_\_\_\_  
Arthur Cheng  
Environmental Team Leader

AC/sp

c.c. AECOM – Mr. P.K. Lee, Mr. W.S. Ng, Mr. Ernest Wong  
RAMBOLL ENVIRON – Mr. Ray Yan, Mr. Andy Wong  
CHEC – Mr. Marko Chan

**MATERIALAB CONSULTANTS LIMITED**

Room 723 & 725, 7/F, Block B,  
Profit Industrial Building,  
1-15 Kwai Fung Crescent, Kwai Fong,  
Hong Kong.

Tel : (852)-24508238  
Fax : (852)-24508032  
Email : mcl@fugro.com



Report No.: 0165/15/ED/0452

**MONTHLY ENVIRONMENTAL MONITORING & AUDIT  
REPORT (Rev. 2)**

**May 2016**

**Client:** China Harbour Engineering Co., Ltd.


**Project:** Contract No. HY/2013/03  
Hong Kong-Zhuhai-Macao Bridge  
Hong Kong Boundary Crossing Facilities -  
Vehicle Clearance Plazas and  
Ancillary Buildings and Facilities

**Report No.:** 0165/15/ED/0452

Prepared by: Sandra Pang

Reviewed by: Bong Yu

Certified by:

  
Arthur Cheng  
Environmental Team Leader

## **MATERIALAB CONSULTANTS LIMITED**

Room 723 & 725, 7/F, Block B,  
Profit Industrial Building,  
1-15 Kwai Fung Crescent, Kwai Fong,  
Hong Kong.

Tel : (852)-24508238  
Fax : (852)-24508032  
Email : mcl@fugro.com

The logo for MaterialLab, featuring the word "MaterialLab" in a bold, sans-serif font. The text is white and is set against a black rectangular background that has a thin white border.

Report No.: 0165/15/ED/0452

## **CONTENTS**

### **EXECUTIVE SUMMARY**

1. INTRODUCTION
  - 1.1 Background
  - 1.2 Project Description
  - 1.3 Project Organisation
  - 1.4 Construction Programme
  - 1.5 Construction Works undertaken during the Reporting Period
2. AIR QUALITY MONITORING
  - 2.1 Monitoring Locations
  - 2.2 Monitoring Requirements
  - 2.3 Monitoring Results
3. NOISE MONITORING
  - 3.1 Monitoring Locations
  - 3.2 Monitoring Requirements
  - 3.3 Monitoring Results
4. WATER QUALITY MONITORING
5. ECOLOGY MONITORING
6. DISPOSAL OF MARINE SEDIMENT EXTRACTED FROM BORED PILING WORKS
  - 6.1 Background
  - 6.2 Dumping Arrangements
  - 6.3 Quantity Disposed
7. ENVIRONMENTAL SITE INSPECTION AND AUDIT
  - 7.1 Site Inspection
  - 7.2 Advice on the Solid and Liquid Waste Management Status
  - 7.3 Environmental Licenses and Permits
  - 7.4 Implementation Status of Environmental Mitigation Measures
  - 7.5 Summary of Exceedance of the Environmental Quality Performance Limit
  - 7.6 Summary of Complaints, Notification of Summons and Successful Prosecution
8. FUTURE KEY ISSUES
  - 8.1 Construction Programme for the Coming Months
  - 8.2 Environmental Site Inspection Schedule for the Coming Month
9. CONCLUSIONS

## **MATERIALAB CONSULTANTS LIMITED**

Room 723 & 725, 7/F, Block B,  
Profit Industrial Building,  
1-15 Kwai Fung Crescent, Kwai Fong,  
Hong Kong.

Tel : (852)-24508238  
Fax : (852)-24508032  
Email : mcl@fugro.com

The logo for MaterialLab, featuring the word "MaterialLab" in a bold, sans-serif font. The text is white and is set against a black rectangular background that has horizontal lines above and below it.

---

Report No.: 0165/15/ED/0452

## **APPENDICES**

- A Location of Works Areas
- B Project Organization for Environmental Works
- C Construction Program
- D Event / Action Plan
- E Waste Flow Table
- F Environmental Licenses and Permits
- G Implementation Schedule for Environmental Mitigation Measures (EMIS)
- H Statistics on Environmental Complaints, Notification of Summons and Successful Prosecutions
- I Environmental Site Inspection Schedule

## **FIGURES**

- Figure 1 Air Quality Monitoring Stations
- Figure 2 Noise Monitoring Stations

## MATERIALAB CONSULTANTS LIMITED

Room 723 & 725, 7/F, Block B,  
Profit Industrial Building,  
1-15 Kwai Fung Crescent, Kwai Fong,  
Hong Kong.

Tel : (852)-24508238  
Fax : (852)-24508032  
Email : mcl@fugro.com

The logo for MaterialLab, featuring the word "MaterialLab" in a bold, sans-serif font. The text is white and is set against a dark, rectangular background that has a slight gradient and a thin white border.

Report No.: 0165/15/ED/0452

### EXECUTIVE SUMMARY

This Monthly Environmental Monitoring and Audit (EM&A) Report is prepared for Contract No. HY/2013/03 "Hong Kong-Zhuhai-Macao Bridge Hong Kong Boundary Crossing Facilities – Vehicle Clearance Plazas and Ancillary Buildings and Facilities" (hereafter referred to as "the Contract") for the Highways Department of Hong Kong Special Administrative Region (HKSAR). The Contract was awarded to China Harbour Engineering Co. Limited (hereafter referred to as "the Contractor") and MaterialLab Consultants Limited (MCL) was appointed as the Environmental Team (ET) by the Contractor.

The Contract is part of the "Hong Kong-Zhuhai-Macao Bridge Hong Kong Boundary Crossing Facilities" (HZMB HKBCF) Project which is a "Designated Project" under Schedule 2 of the Environmental Impact Assessment (EIA) Ordinance (Cap. 499) and for which an EIA Report (Register No. AEIAR-145/2009) was prepared and approved. The current Environmental Permit (EP) for HKBCF, namely No. EP-353/2009/K, was issued on 11 April 2016. These documents are available through the EIA Ordinance Register.

Commencement of the Contract took place on 10 April 2015 while the construction works and the EM&A programme of this Contract commenced on 29 August 2015.

MaterialLab Consultants Limited (MCL) has been appointed by the Contractor to implement the Environmental Monitoring & Audit (EM&A) programme for the Contract in accordance with the Updated EM&A Manual for HKBCF (Version 1.0) and will be providing environmental team services for the Contract.

This is the 9<sup>th</sup> Monthly EM&A Report for the Contract which summaries findings of the EM&A programme during the reporting period from 1 May 2016 to 31 May 2016 (the "reporting period"). The monthly EM&A programme was undertaken in accordance with the Updated EM&A Manual for HKBCF (Version 1.0). It should be noted that the air quality and noise monitoring works for the Contract are covered by Contract No. HY/2010/02 "Hong Kong-Zhuhai-Macao Bridge HKBCF – Reclamation Works" and Contract No. HY/2011/03 "Hong Kong-Zhuhai-Macao Bridge Hong Kong Link Road – Section between Scenic Hill and HKBCF". The ET of the Contract or another ET of the HZMB project is required to conduct impact air quality monitoring at AMS6 and AMS7 and noise monitoring at NMS2 and NMS3B as part of EM&A programme if these monitoring stations are no longer covered under Contract No. HY/2010/02 and HY/2011/03. However, this is subject to ENPO's final decision on which ET should carry out the monitoring work at these stations.

The dates of site inspection during the reporting period are listed below:

Environmental Site Inspection: 6, 13, 20 and 27 May 2016.

### Breaches of Action and Limit Levels

Summary of Action and Limit Level exceedance of 1-hr TSP level and 24-hr TSP level at AMS6 shall be referred to the monthly EM&A report prepared by Contract No. HY/2011/03.

There was no Action and Limit Level exceedance of 1-hr TSP level and 24-hr TSP level recorded at station AMS7 by the Environmental Team of Contract No. HY/2010/02 during the reporting period.

There was no Action and Limit Level exceedance for noise recorded at station NMS2 and station NMS3B by the Environmental Team of Contract No. HY/2010/02 during the reporting period.

## **MATERIALAB CONSULTANTS LIMITED**

Room 723 & 725, 7/F, Block B,  
Profit Industrial Building,  
1-15 Kwai Fung Crescent, Kwai Fong,  
Hong Kong.

Tel : (852)-24508238  
Fax : (852)-24508032  
Email : mcl@fugro.com

The logo for MaterialLab, featuring the word "MaterialLab" in a bold, sans-serif font. The text is white and is set against a black rectangular background that has a thin white border.

Report No.: 0165/15/ED/0452

There was no marine works conducted during the reporting period and therefore, no water quality impact monitoring result is reported.

There was no marine works conducted during the reporting period and therefore, no ecology monitoring result is reported.

### **Complaint Log**

There were no complaints received in relation to the environmental impact during the reporting period.

### **Notifications of Summons and Successful Prosecutions**

There were no notifications of summons or prosecutions received during this reporting period.

### **Reporting Changes**

There was no reporting change during the reporting period.

### **Future Key Issues**

The future key issues to be undertaken in the upcoming month are:

- Site Investigation at Portion G;
- Piling at Portion A1, STP, G (Bridge A1 – A5, A7b, A8 & A9);
- Building at Portion A1 & G;
- CUE Construction, Drainage & Sewerage Work, Radiation Screen Wall and Sign Gantry Footing at Portion B;
- Bridge Construction, High Mast Lighting Foundation, Pumping Station & Box Culvert D at Portion G; and
- Marine sediment excavation activities from the land-based works and corresponding disposal at the designated disposal sites within Hong Kong as allocated by the Marine Fill Committee.



## MATERIALAB CONSULTANTS LIMITED

Room 723 & 725, 7/F, Block B,  
Profit Industrial Building,  
1-15 Kwai Fung Crescent, Kwai Fong,  
Hong Kong.

Tel : (852)-24508238  
Fax : (852)-24508032  
Email : mcl@fugro.com

The logo for MaterialLab, featuring the word "MaterialLab" in a bold, sans-serif font. The text is white and is set against a dark, rectangular background that has a slight gradient and a thin white border.

Report No.: 0165/15/ED/0452

### 1. INTRODUCTION

#### 1.1 Background

1.1.1 MaterialLab Consultants Limited was commissioned by China Harbour Engineering Co. Limited (also referred to as "the Contractor") to undertake the Environmental Team (ET) services (including environmental monitoring and audit (EM&A)) for Contract No. HY/2013/03 "Hong Kong-Zhuhai-Macao Bridge Hong Kong Boundary Crossing Facilities – Vehicle Clearance Plazas and Ancillary Buildings and Facilities" ("the Contract") for the Highways Department of Hong Kong Special Administrative Region (HKSAR).

1.1.2 The Contract is part of Hong Kong–Zhuhai–Macao Bridge Hong Kong Boundary Crossing Facilities (HKBCF) which is "Designated Projects", under Schedule 2 of the Environmental Impact Assessment Ordinance (EIAO) (Cap 499) and for which an EIA Report (Register No. AEIAR-145-2009) was prepared and approved. The current Environmental Permit (EP) for HKBCF, namely No. EP- 353/2009/K, was issued on 11 April 2016. These documents are available through the EIA Ordinance. The general layout of the Project area is shown in **Appendix A**.

1.1.3 This is the ninth EM&A report to document the findings of site inspection activities and EM&A programme carried out by the Contractor from 1 May 2016 to 31 May 2016 (reporting period) under Contract No. HY/2013/03 and is submitted to fulfil Condition 5.4 of the EP.

#### 1.2 Project Description

1.2.1 The works to be executed under this Contract include the following major items:

- a. Cargo clearance facilities including kiosks for clearance of good vehicles, customs inspection platforms, X-ray building, etc.;
- b. Passenger related facilities including processing kiosks and examination facilities for private cars and coaches, annexure for examination of accompanying passengers of private cars, etc.;
- c. Accommodation/offices for the facilities (like fire station, police station, buildings for Immigration Department [ImmD], Hong Kong Customs and Excise Department [C&ED], Agriculture, Fisheries and Conservation Department [AFCD], Food and Environmental Hygiene Department [FEHD], Department of Health [DofH] etc.) of the Government departments providing services in connection with the HKBCF;
- d. Provision of transport and miscellaneous facilities inside the HKBCF including public transport interchange (PTI), transport drop-off and pick-up areas, vehicle holding areas, passenger queuing areas, road networks, footbridges, fencing, sewerage and drainage systems, sewage treatment plant and treated effluent disposal facilities, water supply system, building services works, electronic system, and traffic control and information system including traffic control and surveillance system (TCSS), etc.;
- e. Provision of roads connecting the BCF to the Hong Kong Link Road (HKLR), the Tuen Mun – Chek Lap Kok Link (TM-CLKL) and the Hong Kong International Airport (HKIA), expect the part of road works in HKIA entrusted to the HKLR project; and
- f. Re-provisioning of the affected HKIA's facilities, expect those affected by the Automated People Mover (APM) system such as the existing east rescue berth.

#### 1.3 Project Organisation

## MATERIALAB CONSULTANTS LIMITED

Room 723 & 725, 7/F, Block B,  
Profit Industrial Building,  
1-15 Kwai Fung Crescent, Kwai Fong,  
Hong Kong.

Tel : (852)-24508238  
Fax : (852)-24508032  
Email : mcl@fugro.com



Report No.: 0165/15/ED/0452

1.3.1 The Project Organisation for Environmental Works is shown in **Appendix B**. The contact person and telephone numbers of key personnel for the captioned project are shown in **Table 1.1**:

Table 1.1 Contact Persons and Telephone Numbers of Key Personnel

Party	Position	Contact Person	Telephone No.	Fax No.
Engineer or Engineer's Representative (AECOM Asia Co. Ltd.)	Chief Resident Engineer	Mr. Michael Tovey	3985 7470	3902 8800
Environmental Project Office / Independent Environmental Checker (Ramboll Environ Hong Kong Limited)	Environmental Project Office Leader	Mr. Y. H. Hui	3547 2133	3465 2899
	Independent Environmental Checker (IEC)	Mr. Raymond Dai	3465 2888	34652899
	Environmental Site Supervisor	Mr. Ray Yan	5181 8165	3465 2899
Contractor (China Harbour Engineering Co. Ltd)	Site Agent	Mr. Paul Pui	9125 0700	2512 0427
	Environmental Officer	Mr. Marko Chan	9427 2879	2512 0427
Environmental Team (Materialab Consultants Limited)	Environmental Team Leader (ETL)	Mr. Arthur Cheng	3565 4115	2450 8032
24-hr Complaint Hotline	--	--	5236 7111	--

1.3.2 The Contract HY/2013/03 has commenced on 10 April 2015. The commencement of construction works and the EM&A programme have commenced on 29 August 2015.

### 1.4 Construction Programme

1.4.1 The construction programme is provided in **Appendix C**.

### 1.5 Construction Works Undertaken during the Reporting Period

1.5.1 The construction works of this Contract commenced on 29 August 2015. During this reporting period, the following major site activities were commenced:

- Site Investigation at Portion G;
- Piling at Portion A1, STP, G (Bridge A1 – A5, A7b, A8 & A9);
- Building at Portion A1 & G;
- CUE Construction, Drainage & Sewerage Work, Radiation Screen Wall and Sign Gantry Footing at Portion B;
- High Mast Lighting Foundation, Pumping Station & Box Culvert D at Portion G;
- Marine sediment excavation activities from the land-based works; and
- Temporary stockpiles of excavated marine sediment within the Site, maintained in a stable condition, lined with impermeable sheeting, bunded and with proper leachate control measurers.

## MATERIALAB CONSULTANTS LIMITED

Room 723 & 725, 7/F, Block B,  
Profit Industrial Building,  
1-15 Kwai Fung Crescent, Kwai Fong,  
Hong Kong.

Tel : (852)-24508238  
Fax : (852)-24508032  
Email : mcl@fugro.com



Report No.: 0165/15/ED/0452

## 2. AIR QUALITY MONITORING

### 2.1 Monitoring Locations

- 2.1.1 The air quality monitoring works for the Contract are covered by Contract No. HY/2010/02 "Hong Kong-Zhuhai-Macao-Bridge HKBCF – Reclamation Works" and Contract No. HY/2011/03 "Hong Kong-Zhuhai-Macao Bridge Hong Kong Link Road – Section between Scenic Hill and HKBCF". The ET of the Contract or another ET of the HZMB project is required to conduct impact air quality monitoring at AMS6 and AMS7 as part of EM&A programme if these air quality monitoring stations are no longer covered under Contract No. HY/2010/02 and HY/2011/03. **Figure 1** shows the locations of air monitoring stations.

Table 2.1 Air Quality Monitoring Location

Air Monitoring Station	Location
AMS6	Dragonair/CNAC (Group) Building (A80)
AMS7	Hong Kong SkyCity Marriott Hotel

### 2.2 Monitoring Requirements

- 2.2.1 The monitoring requirements, equipment, parameters, frequency and duration, methodology, schedule, and meteorological information are described in the monthly EM&A Reports prepared for Contract No. HY/2010/02 and HY/2011/03.
- 2.2.2 The Action and Limit levels for 1-hr TSP and 24-hr TSP are summarized in **Table 2.2**.

Table 2.2 Action and Limit Levels for Air Quality

Monitoring Station	Action Level ( $\mu\text{g}/\text{m}^3$ )	Limit Level ( $\mu\text{g}/\text{m}^3$ )
<b>1 hour TSP</b>		
AMS6	360	500
AMS7	370	
<b>24 hours TSP</b>		
AMS6	173	260
AMS7	183	

- 2.2.3 The event and action plan is provided in **Appendix D**.
- 2.2.4 If exceedance(s) at these stations is/are recorded by the ET of the Contract or referred by the other ET under the HZMB project to the Contract, the ET of the Contract will carry out an investigation and findings will be reported in the monthly EM&A Report.

### 2.3 Monitoring Results

- 2.3.1 The monitoring results for AMS6 and AMS7 are reported in the monthly EM&A Reports prepared for Contract No. HY/2011/03 and HY/2010/02 respectively.
- 2.3.2 Summary of Action and Limit Level exceedance of 1-hr TSP level and 24-hr TSP level at AMS6 shall be referred to the monthly EM&A report prepared by Contract No. HY/2011/03.
- 2.3.3 There was no Action and Limit Level exceedance of 1-hr TSP level and 24-hr TSP level recorded at station AMS7 by the Environmental Team of Contract No. HY/2010/02 during the reporting period.

## MATERIALAB CONSULTANTS LIMITED

Room 723 & 725, 7/F, Block B,  
Profit Industrial Building,  
1-15 Kwai Fung Crescent, Kwai Fong,  
Hong Kong.

Tel : (852)-24508238  
Fax : (852)-24508032  
Email : mcl@fugro.com



Report No.: 0165/15/ED/0452

### 3. NOISE MONITORING

#### 3.1 Monitoring Locations

3.1.1 The noise monitoring works for the Contract are covered by Contract No. HY/2010/02 "Hong Kong-Zhuhai-Macao Bridge HKBCF – Reclamation Works". The ET of the Contract or another ET of the HZMB project is required to conduct noise monitoring at NMS2 and NMS3B as part of EM&A programme if these monitoring stations are no longer covered under Contract No. HY/2010/02. **Figure 2** shows the locations of noise monitoring stations.

Table 3.1 Construction Noise Monitoring Location

ID No.	Description
NMS2	Seaview Crescent
NMS3B	Site Boundary of Site Office Area at WA2

#### 3.2 Monitoring Requirements

3.2.1 The monitoring requirements, monitoring equipment, monitoring parameters, frequency and duration, monitoring methodology and monitoring schedule are detailed in the monthly EM&A Reports prepared for Contract No. HY/2010/02.

3.2.2 The Action and Limit Levels for construction noise are defined in **Table 3.2**.

Table 3.2 Action and Limit Level for Construction Noise

Monitoring Station	Action Level	Limit Level
<b>For the Time Period 0700-1900 hrs. on Normal Weekdays</b>		
NMS2	When one documented complaint is received	75.0 dB (A) Leq (30 min.)
NMS3B		70.0 dB (A) Leq (30 min.)*

Notes: If works are to be carried out during restricted hours, the conditions stipulated in the construction noise permit issued by the Noise Control Authority have to be followed.

\* Reduce to 70 dB(A) for schools and 65 dB(A) during school examination period

#### 3.3 Monitoring Results

3.3.1 The monitoring results for NMS2 and NMS3B are reported in the monthly EM&A Reports prepared for Contract No. HY/2010/02. No noise exceedances were recorded at stations NMS2 and NMS3B by the ET of Contract No. HY/2010/02 during the reporting period.

## **MATERIALAB CONSULTANTS LIMITED**

Room 723 & 725, 7/F, Block B,  
Profit Industrial Building,  
1-15 Kwai Fung Crescent, Kwai Fong,  
Hong Kong.

Tel : (852)-24508238  
Fax : (852)-24508032  
Email : mcl@fugro.com

The logo for MaterialLab, featuring the word "MaterialLab" in a bold, sans-serif font. The text is white and is set against a black rectangular background that has a thin white border.

Report No.: 0165/15/ED/0452

### **4. WATER QUALITY MONITORING**

- 4.1 There was no marine works conducted during the reporting period and therefore, no relevant monitoring result is reported. However, ET of the Contract shall closely monitor on the status of marine works, which shall conduct monitoring when marine works commence in the future.
- 4.2 The ET of the Contract is required to conduct impact water quality monitoring as part of EM&A programme if water quality monitoring is no longer covered by another ET of the HZMB project. The ETL shall review and obtain IEC, ENPO and EPD agreement on the contract specific water quality monitoring works at least a month before the commencement of any marine works.
- 4.3 With respect to condition 3.26A of EP-353/2009/K approved by EPD on 11 April 2016, the numbers and operating periods of floating grout production facilities and floating concrete batching plants on-site to review on the compliance to this EP condition were checked. Under Contract No. HY/2013/03, one floating concrete batching plant was operated on-site during the reporting period.

## MATERIALAB CONSULTANTS LIMITED

Room 723 & 725, 7/F, Block B,  
Profit Industrial Building,  
1-15 Kwai Fung Crescent, Kwai Fong,  
Hong Kong.

Tel : (852)-24508238  
Fax : (852)-24508032  
Email : mcl@fugro.com

The logo for MaterialLab, featuring the word "MaterialLab" in a bold, sans-serif font. The text is white and is set against a black rectangular background that has a thin white border.

Report No.: 0165/15/ED/0452

### 5. ECOLOGY MONITORING

- 5.1 There was no marine works conducted which impacted to the ecology during the reporting period and therefore, no relevant monitoring result is reported. However, ET of the Contract shall closely monitor on the status of marine works, which shall conduct monitoring when marine works commence in the future.
- 5.2 The ET of the Contract is required to conduct ecology monitoring as part of EM&A programme if ecology monitoring is no longer covered by another ET of the HZMB project. The ETL shall review and obtain IEC, ENPO, AFCD and EPD agreement on the contract specific marine ecology monitoring works at least a month before the commencement of any marine works.
- 5.3 With respect to condition 3.26A of EP-353/2009/K approved by EPD on 11 April 2016, the numbers and operating periods of floating grout production facilities and floating concrete batching plants on-site to review on the compliance to this EP condition were checked. Under Contract No. HY/2013/03, one floating concrete batching plant was operated on-site during the reporting period.

## MATERIALAB CONSULTANTS LIMITED

Room 723 & 725, 7/F, Block B,  
Profit Industrial Building,  
1-15 Kwai Fung Crescent, Kwai Fong,  
Hong Kong.

Tel : (852)-24508238  
Fax : (852)-24508032  
Email : mcl@fugro.com

The logo for MaterialLab, featuring the word "MaterialLab" in a bold, sans-serif font. The text is white and is set against a dark, rectangular background that has a slight 3D effect with a shadow on the right side.

Report No.: 0165/15/ED/0452

### 6. DISPOSAL OF MARINE SEDIMENT EXTRACTED FROM BORED PILING WORKS

#### 6.1 Background

6.1.1 After the acceptance of the review of the approved Sediment Quality Report (SQR) for this Project under EPD letter dated 19 August 2015, an approval to dispose the marine sediment extracted from bored piling for this Project was then approved under memo from Secretary, Marine Fill Committee of CEDD dated 20 August 2015 for the disposal of marine sediment extracted from bored piling works. The disposal sites allocated to this Project are the Mud Pit CMP2 of the Confined Marine Sediment Disposal Facility to the South of The Brothers (or at the East of Sha Chau). As advised by CEDD in the memo dated 19 February 2016, from 00:00 on 22 March 2016 onward, the disposal space at CMP2 of the South of The Brothers is closed and all disposal of contaminated sediment is to be carried out at CMP Vd to the East of Sha Chau (ESC).

6.1.2 No extracted marine sediment was treated using cement solidification/stabilisation (Cement S/S) techniques under Contract No. HY/2013/03 during this reporting period. The marine sediment extracted from this Contract was disposed to the MFC allocated disposal sites directly without treatment during this reporting period. As a practical means, the disposal operation is managed by one contractor who is also responsible for applying dumping permit and its subsequent extension applications from EPD. Contract No. HY/2013/03 has been assigned to coordinate and arrange for disposal of extracted marine sediment from all three Contracts (Contract Nos. HY/2013/02, HY/2013/03 and HY/2013/04).

#### 6.2 Dumping Arrangements

6.2.1 The barge for disposal of marine sediment was morn at the temporary loading and unloading at the east shore of the HKBCF Island, which has been being used by reclamation contractor (Contract No. HY/2010/02) for reclamation activities. In terms of safety consideration and to avoid mixing of sediment between contracts, each dumping date was allocated to one Contract. The quantity of marine sediment disposed on each date was from one Contract.

6.2.2 During dumping, Contractor of Contract No. HY/2013/03 is responsible for transporting the marine sediment from the site area of Contract No. HY/2013/03 to the barge. The estimated quantity of marine sediment in each truck is confirmed by Resident Site Staff of Contract Nos. HY/2013/02, HY/2013/03 and HY/2013/04. The trip tickets for transportation and disposal of marine sediment are collected and checked. Contract No. HY/2013/03 as the dumping permit holder is responsible for reporting to EPD the quantity disposed of as the condition stipulated in the dumping permit. The disposal site allocated to this Project is the Mud Pit CMP Vd of the Confined Marine Sediment Disposal Facility to the East of Sha Chau (ESC) during this reporting period.

#### 6.3 Quantity Disposed

6.3.1 No marine sediment extracted from bored piling from this Contract was disposed to allocated dumping site in May 2016. The summary of marine sediment disposed up to end May 2016 is shown in the following table:

## MATERIALAB CONSULTANTS LIMITED

Room 723 & 725, 7/F, Block B,  
Profit Industrial Building,  
1-15 Kwai Fung Crescent, Kwai Fong,  
Hong Kong.

Tel : (852)-24508238  
Fax : (852)-24508032  
Email : mcl@fugro.com

The logo for MaterialLab, featuring the word "MaterialLab" in a bold, sans-serif font. The text is white and set against a black rectangular background with horizontal lines above and below the text.

Report No.: 0165/15/ED/0452

Table 6.1 Summary of Marine Sediment Disposed to Dumping Site

Month/Year	Quantity disposed (in'000m <sup>3</sup> )			Total
	HY/2013/02	HY/2013/03	HY/2013/04	
Jan 2016	1.272	1.950	0.800	4.022
Feb 2016	2.816	2.328	0.704	5.848
Mar 2016	0.600	2.464	3.942	7.006
Apr 2016	5.128	5.602	5.028	15.758
May 2016	0.000	0.000	0.000	0.000
<b>Total</b>	<b>9.816</b>	<b>12.344</b>	<b>10.474</b>	<b>32.634</b>



## MATERIALAB CONSULTANTS LIMITED

Room 723 & 725, 7/F, Block B,  
Profit Industrial Building,  
1-15 Kwai Fung Crescent, Kwai Fong,  
Hong Kong.

Tel : (852)-24508238  
Fax : (852)-24508032  
Email : mcl@fugro.com

The logo for MaterialLab, featuring the word "MaterialLab" in a bold, sans-serif font. The text is white and set against a dark, rectangular background with horizontal lines above and below it.

Report No.: 0165/15/ED/0452

### 7. ENVIRONMENTAL SITE INSPECTION AND AUDIT

#### 7.1 Site Inspection

- 7.1.1 Site audits were carried out by ET on weekly basis to monitor the implementation of proper environmental management practices and mitigation measures in the Project site.
- 7.1.2 The joint site audits were conducted on 6, 13, 20 and 27 May 2016 by the representatives of Engineer, Contractor, ET and IEC (IEC for 20 May 2016).
- 7.1.3 Particular observations during the site inspection and corrective actions undertaken by the Contractor are described below:

##### 29 April 2016

- 1. CHEC was reminded to clear the stagnant water accumulated at CUE works area. Subsequently, stagnant water was cleared at CUE works area. The observation was closed on 6 May 2016.

##### 6 May 2016

- 1. CHEC was reminded to remove the general refuse accumulated at CUE works area. Subsequently, the general refuse was removed at CUE works area. The observation was closed on 13 May 2016.

##### 13 May 2016

- 1. CHEC was reminded to remove the stagnant water accumulated at CUE works area. Follow-up actions for outstanding observation will be checked in the upcoming site inspections and reported in the coming reporting period.
- 2. CHEC was reminded to remove the stagnant water accumulated at Portion A1. Follow-up actions for outstanding observation will be checked in the upcoming site inspections and reported in the coming reporting period.
- 3. CHEC was reminded to maintain housekeeping practice at CUE works area. Follow-up actions for outstanding observation will be checked in the upcoming site inspections and reported in the coming reporting period.

##### 20 May 2016

- 1. CHEC was reminded to remove the stagnant water accumulated at the drip tray for chemical container at CUE works area. Follow-up actions for outstanding observation will be checked in the upcoming site inspections and reported in the coming reporting period.
- 2. CHEC was reminded to remove the stagnant water accumulated at the drip tray for generator at Portion G. Follow-up actions for outstanding observation will be checked in the upcoming site inspections and reported in the coming reporting period.
- 3. CHEC was reminded to separate the excavated marine sediment properly at Portion G from other fill to avoid further contamination. Follow-up actions for outstanding observation will be checked in the upcoming site inspections and reported in the coming reporting period.

##### 27 May 2016

- 1. CHEC is reminded to remove stagnant water at CUE. Follow-up actions for outstanding observation will be checked in the upcoming site inspections and reported in the coming reporting period.

#### 7.2 Advice on the Solid and Liquid Waste Management Status

## MATERIALAB CONSULTANTS LIMITED

Room 723 & 725, 7/F, Block B,  
Profit Industrial Building,  
1-15 Kwai Fung Crescent, Kwai Fong,  
Hong Kong.

Tel : (852)-24508238  
Fax : (852)-24508032  
Email : mcl@fugro.com

The logo for MaterialLab, featuring the word "MaterialLab" in a bold, sans-serif font. The text is white and set against a black rectangular background with a thin white border.

Report No.: 0165/15/ED/0452

- 7.2.1 The Contractor registered as a chemical waste producer for the Contract. Sufficient numbers of receptacles were available for general refuse collection and sorting.
- 7.2.2 The monthly summary of waste flow table is detailed in **Appendix E**.
- 7.2.3 No excavated marine sediment (from Contract No. HY/2013/03) generated in this reporting period. 0.203 (in'000m<sup>3</sup>) of Inert C & D Wastes and 0.293 (in'000m<sup>3</sup>) of Non-inert C & D Wastes were generated in this reporting period.
- 7.2.4 The excavated marine mud from the land-based works was disposed of at the designated disposal sites within Hong Kong as allocated by the Marine Fill Committee. The Contractor shall ensure no spilling and overflowing of materials during loading / unloading / transportation is allowed.
- 7.2.5 The Contractor was reminded that chemical waste containers should be properly treated and stored temporarily in designated chemical waste storage area on site in accordance with the Code of Practice on the Packing, Labelling and Storage of Chemical Waste.

### 7.3 Environmental Licenses and Permits

- 7.3.1 The valid environmental licenses and permits during the reporting period are summarized in **Appendix F**.

### 7.4 Implementation Status of Environmental Mitigation Measures

- 7.4.1 In response to the site audit findings, the Contractor carried out corrective actions.
- 7.4.2 A summary of the Implementation Schedule of Environmental Mitigation Measures (EMIS) is presented in **Appendix G**. All necessary mitigation measures at this stage of works were implemented properly.
- 7.4.3 Implementation status of Regular Marine Travel Route Plan (RMTRP) was checked by ET. Training of marine travel route for marine vessels operator was given to relevant staff and relevant records were kept properly. Marine traffic records which indicated the number of trips data for pelican barge, hopper barge and tug boat on the implementation of RMTRP from January to May 2016 were checked by ET. Marine traffic records of January and February 2016 were provided by Contractor to ER, IEC/ENPO for checking on 23 March 2016. Marine traffic records of March, April and May 2016 were provided by Contractor to ER, IEC/ENPO for checking on 14 June 2016.

### 7.5 Summary of Exceedance of the Environmental Quality Performance Limit

- 7.5.1 Summary of Action and Limit Level exceedance of 1-hr TSP level and 24-hr TSP level at AMS6 shall be referred to the monthly EM&A report prepared by Contract No. HY/2011/03.
- 7.5.2 There was no Action and Limit Level exceedance of 1-hr TSP level and 24-hr TSP level recorded at station AMS7 by the Environmental Team of Contract No. HY/2010/02 during the reporting period.
- 7.5.3 There was no Action and Limit Level exceedance for noise recorded at station NMS2 and station NMS3B by the Environmental Team of Contract No. HY/2010/02 during the reporting period.

## MATERIALAB CONSULTANTS LIMITED

Room 723 & 725, 7/F, Block B,  
Profit Industrial Building,  
1-15 Kwai Fung Crescent, Kwai Fong,  
Hong Kong.

Tel : (852)-24508238  
Fax : (852)-24508032  
Email : mcl@fugro.com

The logo for MaterialLab, featuring the word "MaterialLab" in a bold, sans-serif font. The text is white and is set against a black rectangular background that has a thin white border.

Report No.: 0165/15/ED/0452

7.5.4 There was no marine works conducted during the reporting period and therefore, no relevant monitoring result is reported.

7.5.5 There was no marine works conducted during the reporting period and therefore, no ecology monitoring result is reported.

### 7.6 Summary of Complaints, Notification of Summons and Successful Prosecution

7.6.1 There were no complaints received in relation to the environmental impact during the reporting period. The details of cumulative statistics of Environmental Complaints are provided in **Appendix H**.

7.6.2 There was no notification for summons or prosecutions received in relation to the environmental impact during this reporting period.

7.6.3 Statistics on environmental complaints, notifications of summons and successful prosecutions are provided in **Appendix H**.

## **MATERIALAB CONSULTANTS LIMITED**

Room 723 & 725, 7/F, Block B,  
Profit Industrial Building,  
1-15 Kwai Fung Crescent, Kwai Fong,  
Hong Kong.

Tel : (852)-24508238  
Fax : (852)-24508032  
Email : mcl@fugro.com



Report No.: 0165/15/ED/0452

### **8. FUTURE KEY ISSUES**

#### **8.1 Construction Programme for the Coming Months**

8.1.1 As informed by the Contractor, the following are the major construction activities anticipated in June 2016:

- Site Investigation at Portion G;
- Piling at Portion A1, STP, G (Bridge A1 – A5, A7b, A8 & A9);
- Building at Portion A1 & G;
- CUE Construction, Drainage & Sewerage Work, Radiation Screen Wall and Sign Gantry Footing at Portion B;
- Bridge Construction, High Mast Lighting Foundation, Pumping Station & Box Culvert D at Portion G; and
- Marine sediment excavation activities from the land-based works and corresponding disposal at the designated disposal sites within Hong Kong as allocated by the Marine Fill Committee.

#### **8.2 Environmental Site Inspection Schedule for the Coming Month**

8.2.1 The tentative schedule for weekly site inspections for June 2016 is provided in **Appendix I**.

## MATERIALAB CONSULTANTS LIMITED

Room 723 & 725, 7/F, Block B,  
Profit Industrial Building,  
1-15 Kwai Fung Crescent, Kwai Fong,  
Hong Kong.

Tel : (852)-24508238  
Fax : (852)-24508032  
Email : mcl@fugro.com

The logo for MaterialLab, featuring the word "MaterialLab" in a bold, sans-serif font. The text is white and is set against a dark, rectangular background that has a slight gradient and a thin white border.

Report No.: 0165/15/ED/0452

### 9. CONCLUSIONS

- 9.1 Commencement of the Contract took place on 10 April 2015. The commencement date for construction works and the EM&A programme of the Contract commenced on 29 August 2015.
- 9.2 Summary of Action and Limit Level exceedance of 1-hr TSP level and 24-hr TSP level at AMS6 shall be referred to the monthly EM&A report prepared by Contract No. HY/2011/03.
- 9.3 There was no Action and Limit Level exceedance of 1-hr TSP level and 24-hr TSP level recorded at station AMS7 by the Environmental Team of Contract No. HY/2010/02 during the reporting period.
- 9.4 There was no Action and Limit Level exceedance for noise recorded at station NMS2 and station NMS3B by the Environmental Team of Contract No. HY/2010/02 during the reporting period.
- 9.5 There was no marine works conducted during the reporting period and therefore, no water quality impact monitoring result is reported.
- 9.6 There was no marine works conducted during the reporting period and therefore, no ecology monitoring result is reported.
- 9.7 Environmental site inspections were carried out on 6, 13, 20 and 27 May 2016. Recommendations on remedial actions were given to the Contractor for the deficiencies identified during the site inspections.
- 9.8 There were no complaints received in relation to the environmental impact during the reporting period.
- 9.9 There were no notifications of summons or prosecutions received during the reporting period.

## **MATERIALAB CONSULTANTS LIMITED**

Room 723 & 725, 7/F, Block B,

Profit Industrial Building,

1-15 Kwai Fung Crescent, Kwai Fong,  
Hong Kong.

Tel : (852)-24508238

Fax : (852)-24508032

Email : [mcl@fugro.com](mailto:mcl@fugro.com)



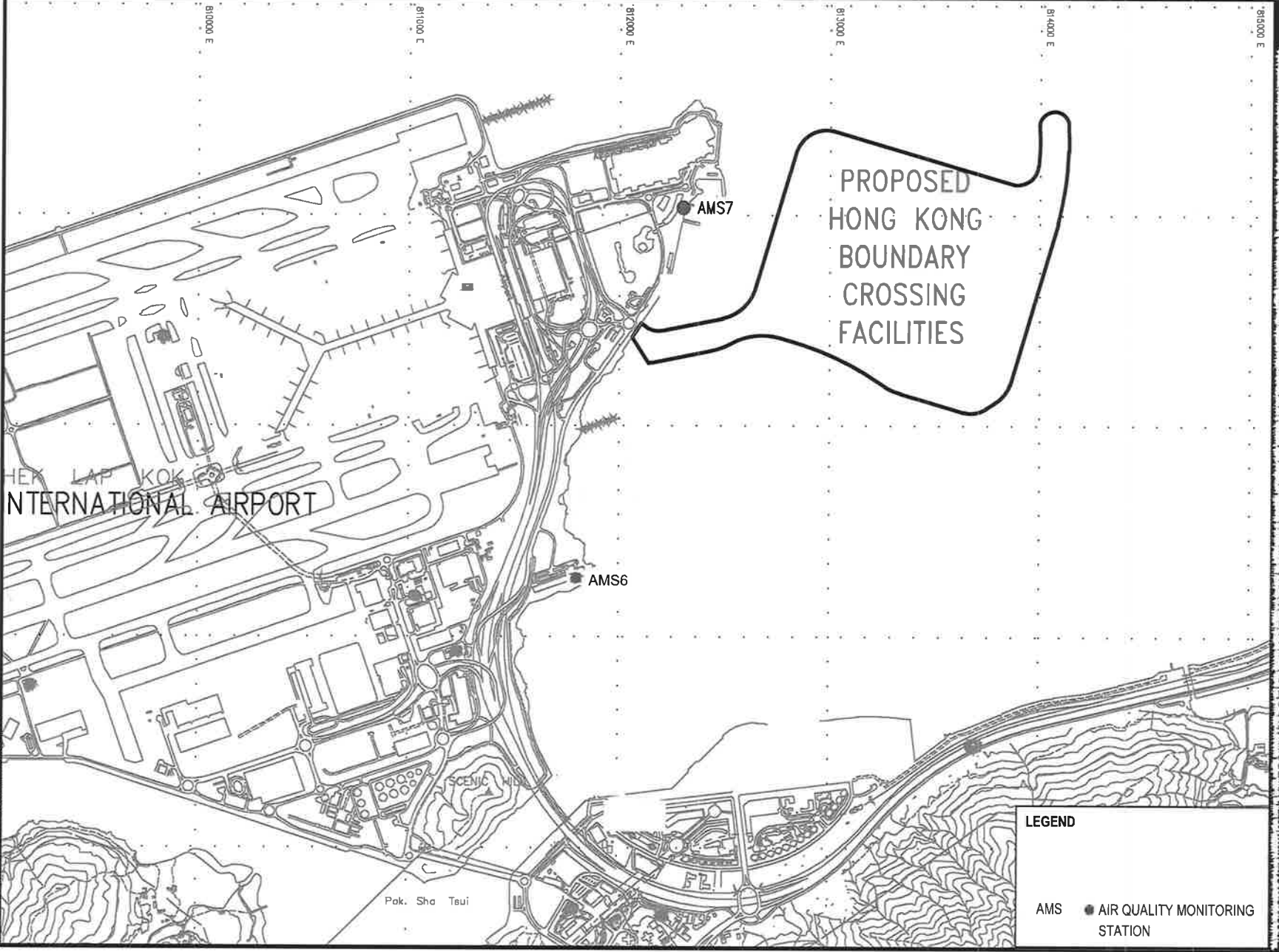
Report No.: 0165/15/ED/0452

---

### **Figure 1**

#### **Air Quality Monitoring Stations**

11/07/2015  
Checked by: Mandy  
Checked: Project Management Initials:  
ISO A3 297mm x 426mm



**AECOM**  
HONG KONG - ZHUHAI - MACAO BRIDGE  
HONG KONG BOUNDARY CROSSING FACILITIES  
- RECLAMATION WORKS  
Project No.: ...  
AIR QUALITY AND NOISE  
MONITORING STATIONS  
FOR HKBCF

## **MATERIALAB CONSULTANTS LIMITED**

Room 723 & 725, 7/F, Block B,  
Profit Industrial Building,  
1-15 Kwai Fung Crescent, Kwai Fong,  
Hong Kong.

Tel : (852)-24508238  
Fax : (852)-24508032  
Email : mcl@fugro.com

The logo for MaterialLab, featuring the word "MaterialLab" in a bold, sans-serif font. The text is white and is set against a black rectangular background that has horizontal lines above and below the text.

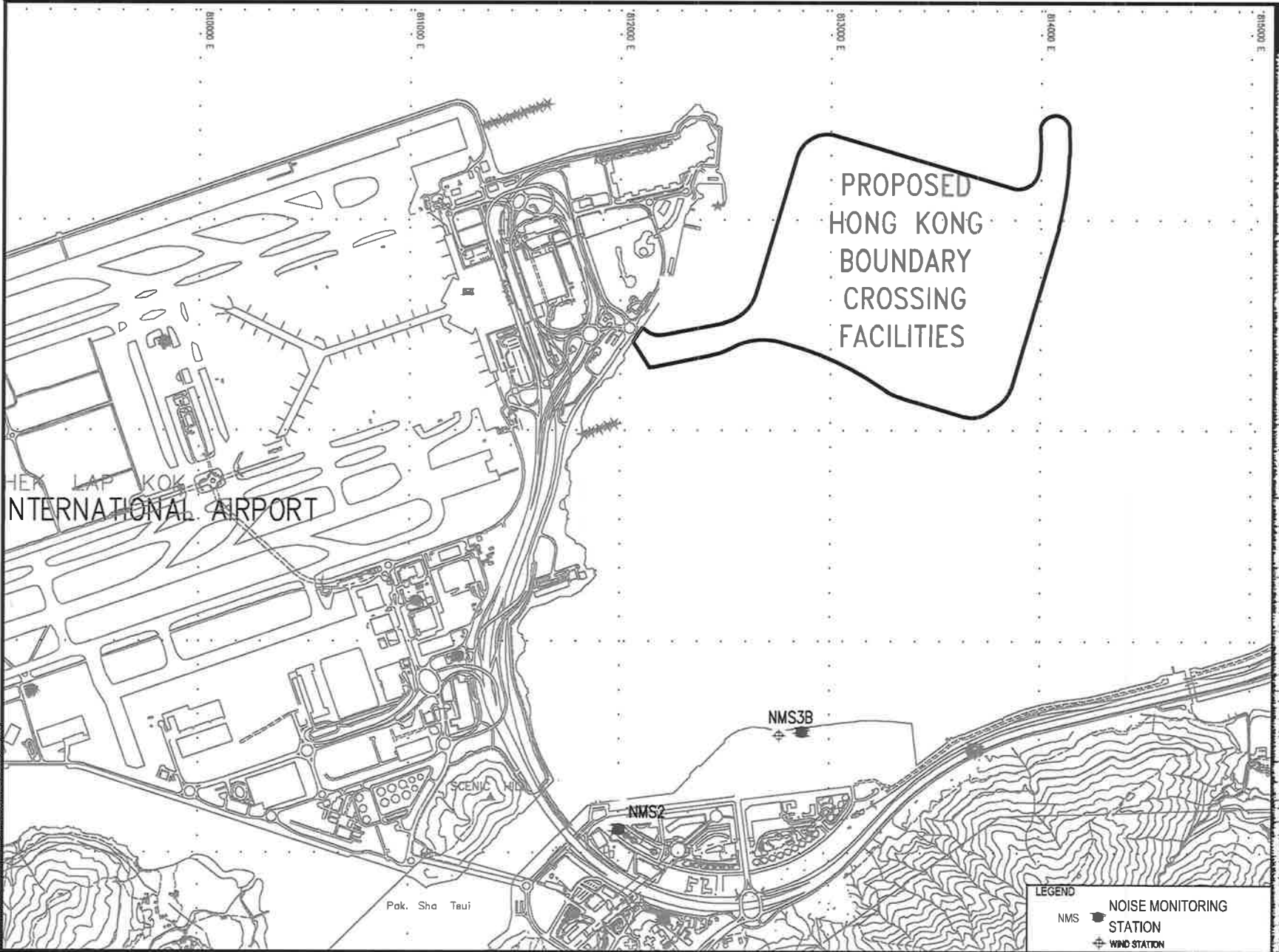
Report No.: 0165/15/ED/0452

---

### **Figure 2**

### **Noise Monitoring Stations**





LEGEND	
NMS	NOISE MONITORING STATION
+	WIND STATION

## **MATERIALAB CONSULTANTS LIMITED**

Room 723 & 725, 7/F, Block B,  
Profit Industrial Building,  
1-15 Kwai Fung Crescent, Kwai Fong,  
Hong Kong.

Tel : (852)-24508238  
Fax : (852)-24508032  
Email : mcl@fugro.com

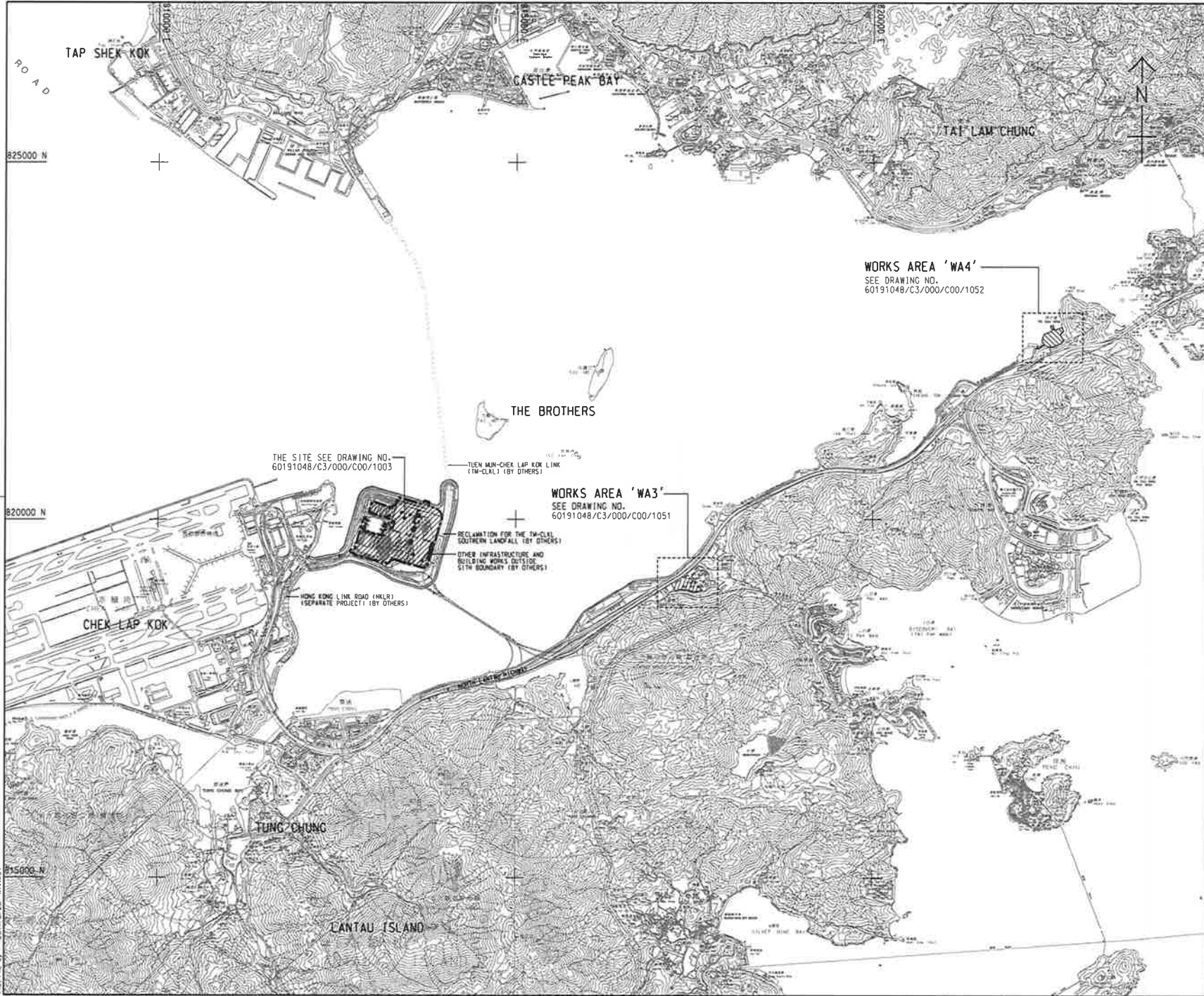
The logo for MaterialLab, featuring the word "MaterialLab" in a bold, sans-serif font. The text is centered between two thick, horizontal black bars.

Report No.: 0165/15/ED/0452

---

### **Appendix A**

#### **Location of Works Areas**



- NOTES:**
1. COORDINATES ARE RELATED TO HONG KONG METRIC GRID (1980).
  2. DIMENSIONS ARE IN MILLIMETER AND CHAINAGE ARE IN METRES UNLESS OTHERWISE SHOWN.
  3. THIS DRAWING SHALL BE READ IN CONJUNCTION WITH DRAWING NOS. 60191048/C3/000/C00/1051 TO 1053.



THE SITE SEE DRAWING NO. 60191048/C3/000/C00/1003

TUEN MUN-CHEK LAP KOK LINK (TM-CLL) (BY OTHERS)

**WORKS AREA 'WA3'**  
SEE DRAWING NO. 60191048/C3/000/C00/1051

RECLAMATION FOR THE TM-CLL SOUTHERN LANDFILL (BY OTHERS)  
OTHER INFRASTRUCTURE AND BUILDING WORKS OUTSIDE SITE BOUNDARY (BY OTHERS)

HONG KONG LINK ROAD (HLR) (SEPARATE PROJECT) (BY OTHERS)

**WORKS AREA 'WA4'**  
SEE DRAWING NO. 60191048/C3/000/C00/1052

TENDER DRAWING	4-14
NO.	ENCL 501 MAR.14

**ROADS DEPARTMENT**  
香港路政署  
Hong Kong Road Management Office

HONG KONG-ZHUHAI-MACAO BRIDGE  
HONG KONG BOUNDARY CROSSING FACILITIES  
VEHICLE CLEARANCE PLAZAS AND  
ANCILLARY BUILDINGS AND FACILITIES

**SITE LOCATION PLAN**

**AECOM** +  
Rogers Stirk Harbour + Partners  
**Aedas**  
BURO HAPPOLD ATKINS ADI +

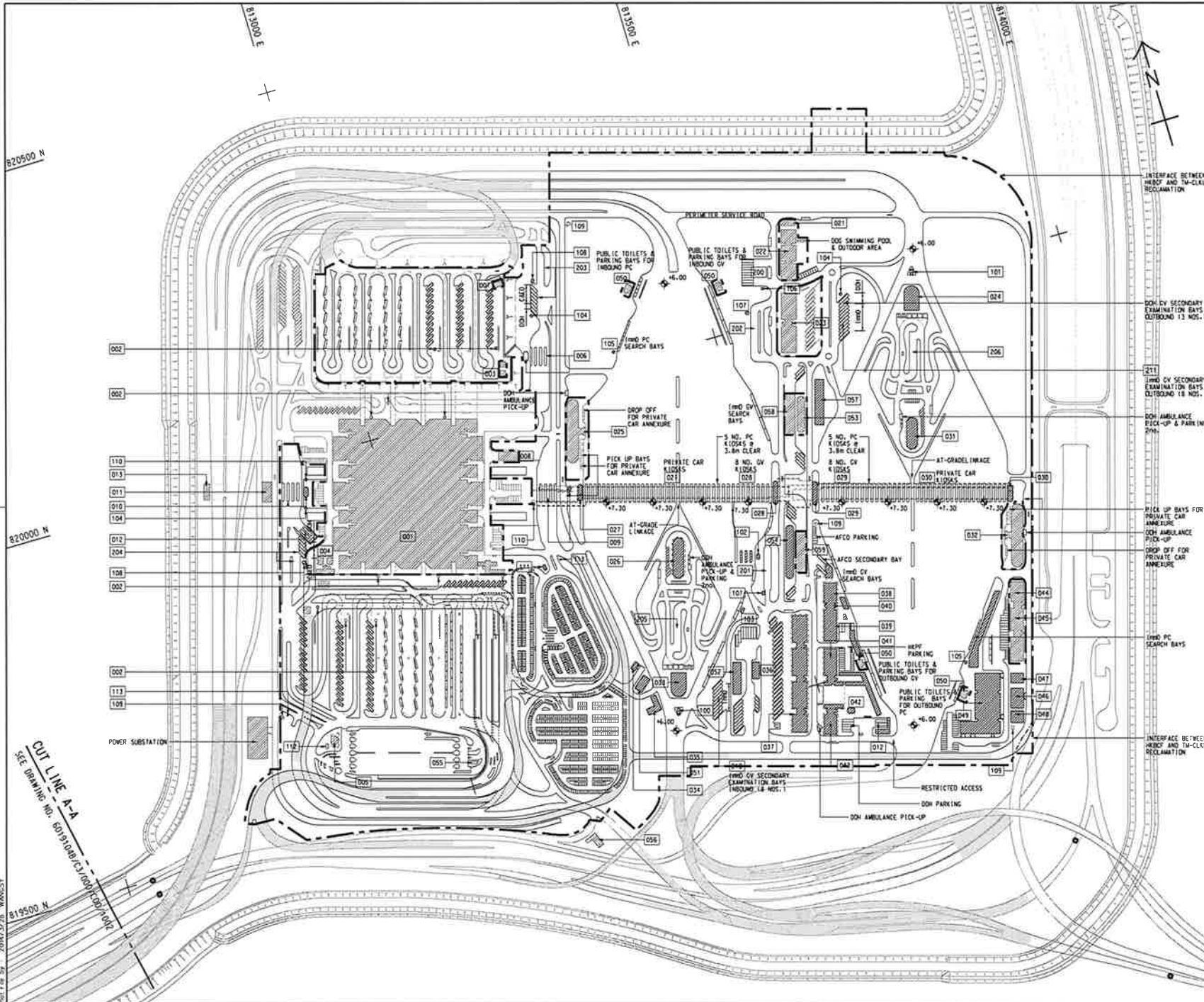
DRG. NO. 60191048/C3/000/C00/1000

DESIGNED BY	ENCL	DATE	17/2013/03	SCALE	1:1
DRAWN BY	WY	DATE	17/2013/03	SCALE	1:1
CHECKED BY	WY	DATE	17/2013/03	SCALE	1:1
APPROVED BY	WY	DATE	17/2013/03	SCALE	1:1

© COPYRIGHT RESERVED

Plot File by: 2014/3/26 WANGSY

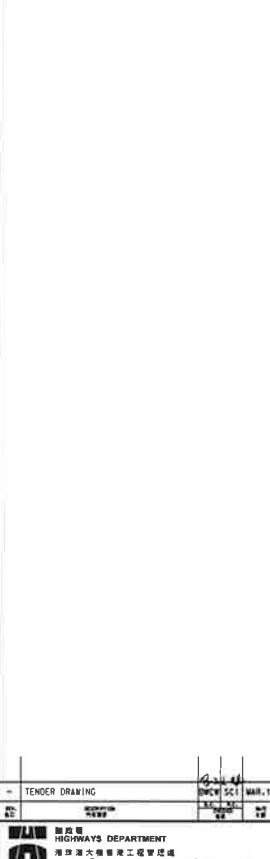
D:\projects\60191048\working\contract\C3\1000\C3\_000\_C00\_1000.dwg



**NOTE:**  
 1. THIS DRAWING TO BE READ IN CONJUNCTION WITH DRAWING NO. 60191048/C3/000/C00/1003.

**LEGEND:**

- SITE BOUNDARY
- ▭ VIAQUET
- ▨ BUILDING/FACILITIES



TENDER DRAWING  
 SHEET NO. SC11 MAR, 14  
 1:1000

HONG KONG HIGHWAYS DEPARTMENT  
 香港公路局  
 HONG KONG-ZHUHAI-MACAO BRIDGE  
 香港珠澳跨境通道

HONG KONG-ZHUHAI-MACAO BRIDGE  
 HONG KONG BOUNDARY CROSSING FACILITIES  
 - VEHICLE CLEARANCE PLAZAS AND  
 ANCILLARY BUILDINGS AND FACILITIES

Figure 1-1  
 Current Layout Plan

SHEET 1 OF 2

**AECOM** +  
**Aedas**  
 Rogers Stirk Harbour + Partners  
 BURD HAPPOLD ATKINS ADI +

DRG. NO. 60191048/C3/000/C00/1001  
 圖號 60191048/C3/000/C00/1001

DESIGNED BY HSY	CHECKED BY HSY	DATE 11/2/2015/03	APPROVED BY TEH
--------------------	-------------------	----------------------	--------------------

SCALE AT 1:2500  
 DIMENSIONS ARE IN METRES  
 © COPYRIGHT RESERVED  
 版權所有

SETTING OUT POINT		
POINT	EASTING	NORTHING
301	817467.265	819162.685
302	817314.741	819069.628
303	817321.338	819049.295
304	817446.865	819117.811
305	817340.825	819027.314
306	817381.250	819023.403
307	817387.861	819043.336
308	817466.133	819091.047
309	817469.783	819087.181
310	817513.448	819113.764
311	817347.717	819016.082
312	817490.595	819032.307
313	817445.268	819013.157
314	817531.154	819001.665
315	817533.345	818991.206
316	817620.259	819000.420
317	817495.827	819029.596
318	817522.110	819075.288
319	817566.404	819028.472
320	817568.507	819008.526
321	817569.551	818999.821



LOCATION PLAN  
SCALE 1 : 25000

NOTES:  
1. COORDINATES ARE RELATED TO HONG KONG METRIC GRID 1980.  
2. DIMENSIONS ARE IN MILLIMETER AND CHAINAGE ARE IN METRES UNLESS OTHERWISE SHOWN.

LEGEND:

	WORKS AREA BOUNDARY
	PORTION 3.1
	PORTION 3.2
	PORTION 3.3
	PORTION 3.4
	PORTION 3.5
	PORTION 3.6
	PORTION 3.7
	PORTION 3.8
	PORTION 3.9
	PORTION 3.10
	NON-BUILDING AREA 8200m <sup>2</sup> (MNDLE)

FOR CONSTRUCTION

C	WORKING DRAWING	REVISED	MAY 15
B	TENDER ADDENDUM NO. 2	REVISED	MAY 14
A	TENDER ADDENDUM NO. 1	REVISED	APR 14
-	TENDER DRAWING	REVISED	MAR 14

HONG KONG HIGHWAYS DEPARTMENT  
HONG KONG ROADWORKS AND MAINTENANCE  
HONG KONG BRIDGE, TUNNEL AND INFRASTRUCTURE PROJECT MANAGEMENT OFFICE  
HONG KONG-SHENZHEN MACHAO BRIDGE  
HONG KONG BORDER CROSSING FACILITIES  
VEHICLE CLEARANCE PLACES AND  
ANCILLARY BUILDINGS AND FACILITIES

WORKS AREA WA3

**AECOM** + **Aedas**  
Rogers Stirk Harbour + Partners  
BURO HAPPOLD ATKINS ADI

DRG. NO. 60191048/C3/000/C00/1051C

DESIGNED BY	ENVCY	APPROVED BY	ENVCY
CHECKED BY	NSY	DATE	15/5/14
SCALE	A1 : 1 : 1000	PROJECT NO.	HY/2013/03
UNIT	METRES	APPROVED BY	ENVCY

**WORKING DRAWING**  
COPYRIGHT RESERVED

819200 N

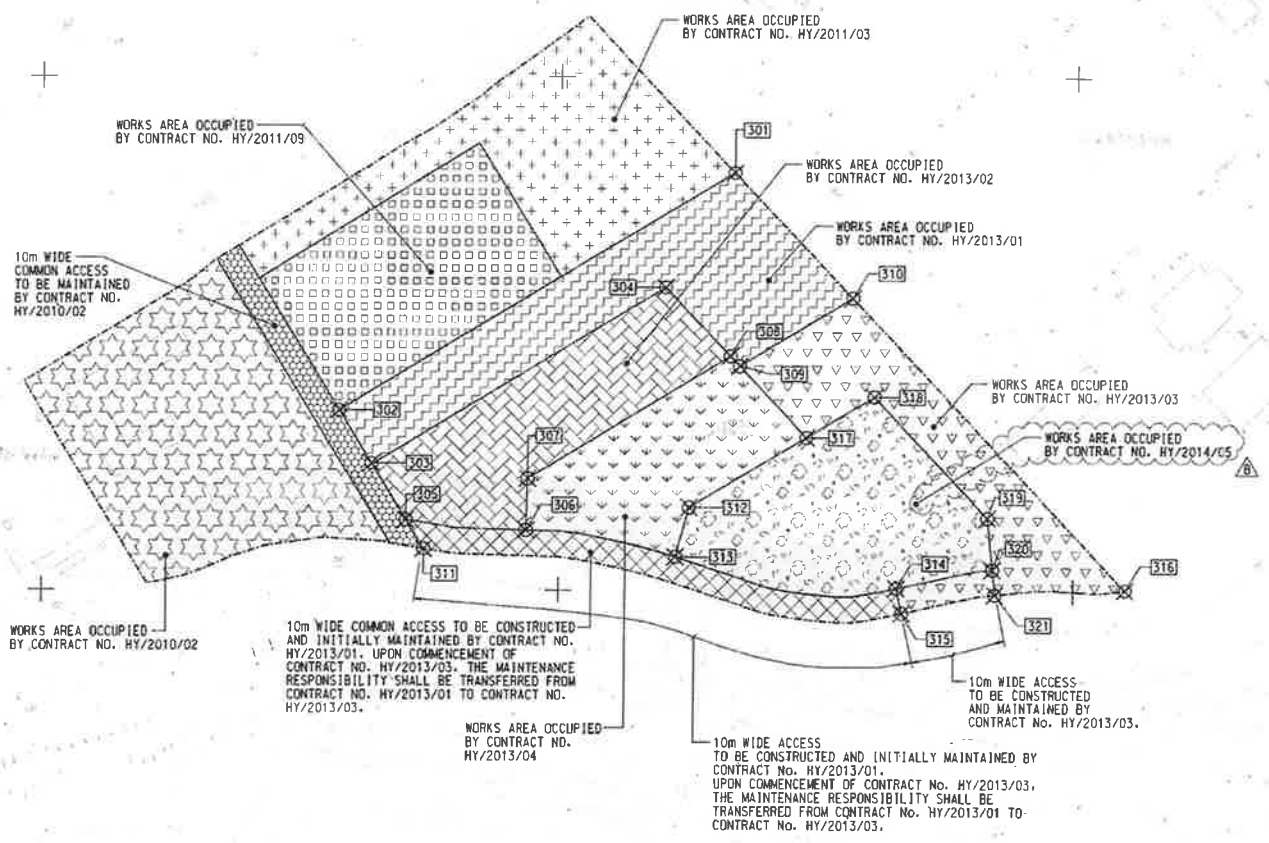
819000 N

817200 E

817400 E

817600 E

NORTH LANKAU HIGHWAY



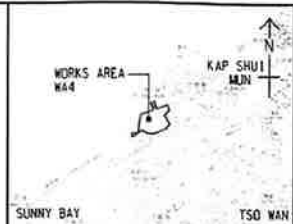
**CONTROLLED DOCUMENT**

Plot File #: 2014/5/2 - WMA027



**SETTING OUT POINT**

POINT	EASTING	NORTHING
401	822488.151	822632.315
402	822640.593	822689.415
403	822515.608	822559.848
404	822610.840	822599.642
405	822629.428	822607.359
406	822526.988	822529.813
407	822518.348	822567.950
408	822542.232	822489.581
409	822584.983	822507.426
410	822506.866	822516.561
411	822560.278	822441.956
412	822602.949	822460.010
413	822621.914	822467.959
414	822624.120	822470.998
415	822651.725	822500.856
416	822644.758	822521.192



**LOCATION PLAN**  
SCALE 1 : 25000

**NOTES:**

- COORDINATES ARE RELATED TO HONG KONG METRIC GRID (1980).
- DIMENSIONS ARE IN MILLIMETER AND CHAINAGE ARE IN METRES UNLESS OTHERWISE SHOWN.

**LEGEND:**

WORKS AREA BOUNDARY	PORTION 4.1	PORTION 4.2	PORTION 4.3	PORTION 4.4	PORTION 4.5	PORTION 4.6	PORTION 4.7	PORTION 4.8	PORTION 4.9
[Symbol]	[Symbol]	[Symbol]	[Symbol]	[Symbol]	[Symbol]	[Symbol]	[Symbol]	[Symbol]	[Symbol]

CONTROLLED DOCUMENT

FOR CONSTRUCTION

C	WORKING DRAWING	REVISED	DATE
B	TENDER ADDENDUM NO. 2	REVISED	MAY.14
A	TENDER ADDENDUM NO. 1	REVISED	APR.14
-	TENDER DRAWING	REVISED	MAR.14

**HA** HIGHWAYS DEPARTMENT  
 港中環大橋及道路工程署  
 Hong Kong Central Harbour Bridge and Road Management Office

HONG KONG-BRINKA-MAKAO BRIDGE  
 HONG KONG BOUNDARY CROSSING FACILITIES  
 - VEHICLE CLEARANCE PLAZAS AND  
 ANCILLARY BUILDINGS AND FACILITIES

**WORKS AREA WA4**

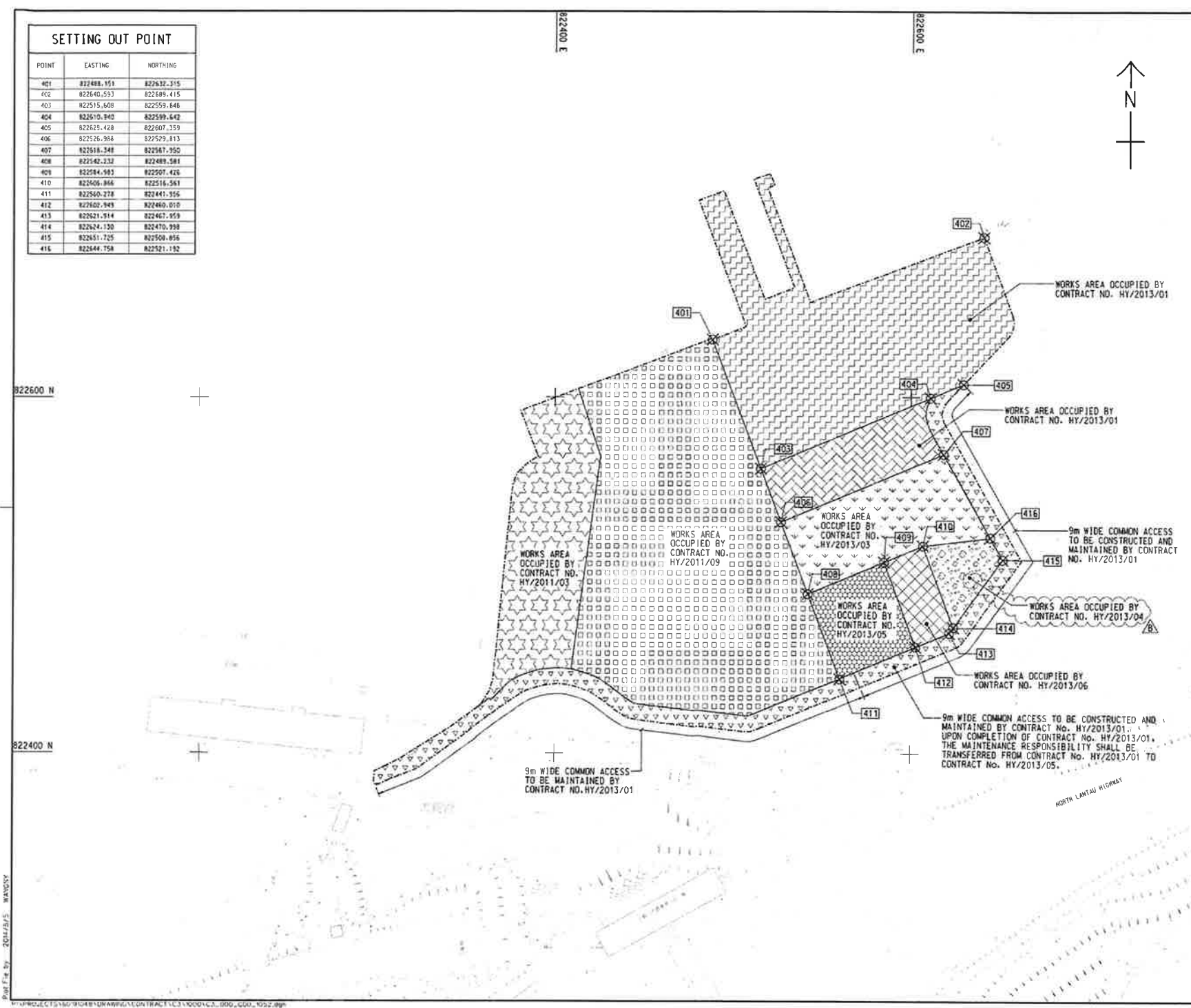
**AECOM** +  
 Rogers Stirk Harbour + Partners  
 BURO HAPPOLD ATKINS ADI +  
**Aedas**

DRGNO. 60191048/C3/000/C00/1052C  
 圖紙編號

DESIGNED BY: BNCM  
 CHECKED BY: YIP Y  
 DATE: HY/2013/03  
 APPROVED BY: TCH

SCALE: 1:1000  
**WORKING DRAWING**

UNIT: METRES  
 COPYRIGHT RESERVED



822600 N

822400 N

822400 E

822600 E



Plot File by 2014/05/15 WANGSY

## **MATERIALAB CONSULTANTS LIMITED**

Room 723 & 725, 7/F, Block B,  
Profit Industrial Building,  
1-15 Kwai Fung Crescent, Kwai Fong,  
Hong Kong.

Tel : (852)-24508238  
Fax : (852)-24508032  
Email : mcl@fugro.com

The logo for MaterialLab, featuring the word "MaterialLab" in a bold, sans-serif font. The text is centered between two thick, horizontal black bars.

Report No.: 0165/15/ED/0452

---

### **Appendix B**

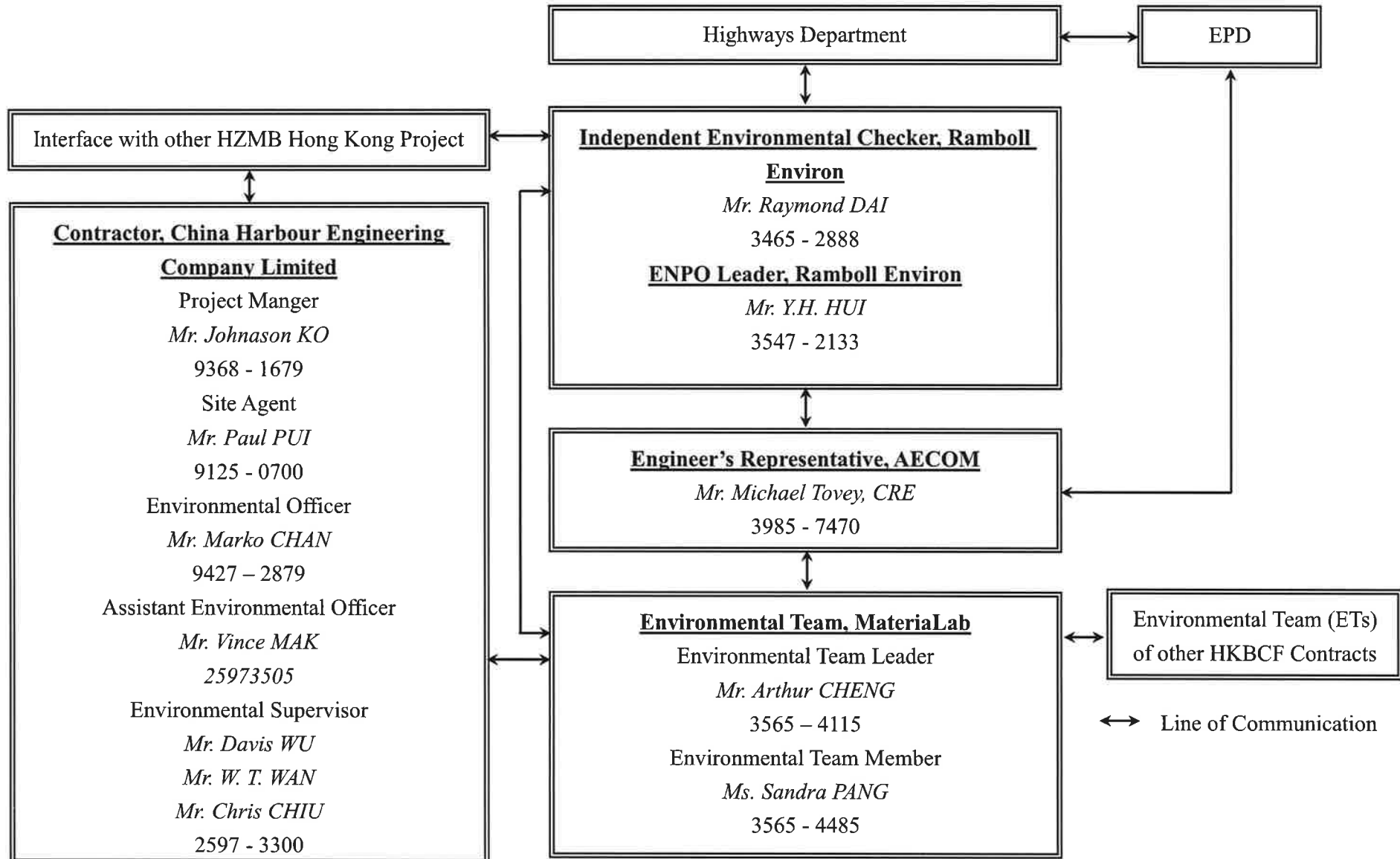
#### **Project Organization for Environmental Works**

# CHINA HARBOUR ENGINEERING COMPANY LIMITED



Contract No. HY/2013/03 Hong Kong-Zhuhai-Macao Bridge, Hong Kong Boundary Crossing  
Facilities – Vehicle Clearance Plazas and Ancillary Buildings and Facilities

## Projects Organization for Environmental Works





## **MATERIALAB CONSULTANTS LIMITED**

Room 723 & 725, 7/F, Block B,  
Profit Industrial Building,  
1-15 Kwai Fung Crescent, Kwai Fong,  
Hong Kong.

Tel : (852)-24508238  
Fax : (852)-24508032  
Email : mcl@fugro.com

The logo for MaterialLab, featuring the word "MaterialLab" in a bold, sans-serif font. The text is white and is set against a black rectangular background that has a thin white border.

Report No.: 0165/15/ED/0452

---

### **Appendix C**

### **Construction Programme**

Activity ID	Activity Name	Original Duration	Remaining Duration	% Complete	Start	Finish	Total Float	2016					
								May	Jun	Jul	Aug	Sep	
<b>HKBCF - VCP DRMs Programme, (WIP 04), UD 310516</b>													
<b>CONTRACT DATES</b>													
<b>Key Dates</b>													
A1030	KD3 Achievement of Stage 3A of the Works (370 days; 13 Apr. 16)	0	0	0%		09-Aug-16*	-118						◆ KD3 Achievement of Stage 3A
<b>Site Access &amp; Possession</b>													
<b>Possession of Portion of Site</b>													
A0010	Possession of Portion A1 (<= 70 days)	0	0	0%		31-May-16*	-347						◆ Possession of Portion A1 (<= 70 days)
A0020	Possession of Portion A2 (<= 75 days)	0	0	0%		31-May-16*	-342						◆ Possession of Portion A2 (<= 75 days)
A0030	Possession of Portion B (<=100 days)	0	0	0%		31-May-16*	-317						◆ Possession of Portion B (<=100 days)
A0040	Possession of Portion C (<=100 days)	0	0	0%		26-Aug-16*	-405						◆ Possession of Portion C (<=100 days)
A0050	Possession of Portion D (<=220 days)	0	0	0%		31-May-16*	-198						◆ Possession of Portion D (<=220 days)
A0060	Possession of Portion E (<=160 days)	0	0	0%		31-May-16*	-257						◆ Possession of Portion E (<=160 days)
A0080	Possession of Portion G (<=225 days)	0	0	0%		31-May-16*	-248						◆ Possession of Portion G (<=225 days)
A0090	Possession of Portion H1 (<=273 days)	0	0	0%		31-May-16*	-144						◆ Possession of Portion H1 (<=273 days)
A0100	Possession of Portion H2 (<=273 days)	0	0	0%		31-May-16*	-144						◆ Possession of Portion H2 (<=273 days)
A0110	Possession of Portion J (<=320 days)	0	0	0%		01-Jul-16*	-129						◆ Possession of Portion J (<=320 days)
A0120	Possession of Portion K (<=340 days)	0	0	0%		01-Aug-16*	-140						◆ Possession of Portion K (<=340 days)
A0130	Possession of Portion L (<=340 days)	0	0	0%		01-Aug-16*	-140						◆ Possession of Portion L (<=340 days)
A0140	Possession of Portion M (<=340 days)	0	0	0%		01-Aug-16*	-157						◆ Possession of Portion M (<=340 days)
A0150	Possession of Portion N (<=345 days)	0	0	0%		01-Aug-16*	-135						◆ Possession of Portion N (<=345 days)
A0160	Possession of Portion P (<=502 days)	0	0	0%		23-Aug-16*	0						◆ Possession of Portion P (<=502 days)
<b>Access to Locations of the Site</b>													
A0210	Contract Date for Access to Location 1.1 (490 days)	0	0	0%		11-Aug-16*	0						◆ Contract Date for Access to Location 1.1 (490 days)
A0220	Contract Date for Access to Location 1.2 (405 days)	0	0	0%		31-May-16*	-12						◆ Contract Date for Access to Location 1.2 (405 days)
A0230	Contract Date for Access to Location 1.3 (488 days)	0	0	0%		09-Aug-16*	0						◆ Contract Date for Access to Location 1.3 (488 days)
A0240	Contract Date for Access to Location 1.4 (488 days)	0	0	0%		09-Aug-16*	0						◆ Contract Date for Access to Location 1.4 (488 days)
A0310	Contract Date for Access to Location 1.8 PCB (Basement level up to ground floor slab) (395 days)	0	0	0%		31-May-16*	-22						◆ Contract Date for Access to Location 1.8 PCB (Basement level up to ground floor slab)
<b>Section/Stage Subject to Excision</b>													
A0790	Contract Date for Section VIII (437 days, latest date when the Engineer may order)	0	0	0%		19-Jun-16*	0						◆ Contract Date for Section VIII (437 days, latest date when the Engineer may order)
<b>PRELIMINARY</b>													
<b>Precast Yard for Bridge Segment</b>													
A0620	Engineering Service and Factory Preparation	120	10	91.67%	01-Dec-15 A	11-Jun-16	-102						
A0630	Segment Manufacture	300	300	0%	13-Jun-16	16-Jun-17	-102						
<b>PORTION A1</b>													
<b>Portion A1 Structures</b>													
<b>Bridge A9</b>													
<b>Bored Pile</b>													
S91015	Bored piles for P904, A905, 4nos	58	58	0%	31-May-16	08-Aug-16	-20						
S91020	Bored piles, 6 nos. (2 cast)	29	19	35%	17-May-16 A	30-Aug-16	-20						
S91030	Pile testing for P904, A905	7	7	0%	23-Aug-16	30-Aug-16	-1						
<b>Box Culvert D</b>													
<b>Bored Pile</b>													
SD0040	Bored Piling for Box Culvert D 45 nr. (34 no. cast)	128	32	75%	05-Oct-15 A	08-Jul-16	-58						

Actual Work  
 Remaining Work  
 Critical  
 Milestone

**THREE MONTH ROLLING PROGRAMME**

**VEHICLE CLEARANCE PLAZAS AND ANCILLARY BUILDINGS AND FACILITIES**

Page 1 of 12

Date	Revision	Checked	Approved
31-Mar-16	3MRP updated as of 31 Mar. 2016	ZJ	
30-Apr-16	3MRP updated as of 30 Apr. 2016	ZJ	
31-May-16	3MRP updated as of 31 May 2016		

**HZMB HK Boundary Crossing Facilities - Vehicle Clearance Plazas and Ancillary Buildings and Facilities**

31-May-16

Activity ID	Activity Name	Original Duration	Remaining Duration	% Complete	Start	Finish	Total Float	2016				
								May	Jun	Jul	Aug	Sep
SD0080	Box Culvert D Pile Testing (Stage 1)	7	0	100%	10-May-16 A	16-May-16 A		█				
SD0090	Box Culvert D Pile Testing (Stage 2)	7	7	0%	31-May-16	07-Jun-16	-58		█			
SD0130	Box Culvert D Pile Testing (Stage 3)	7	7	0%	19-Aug-16	26-Aug-16	-58				█	
<b>Box Culvert D Construction</b>												
SD0060	Box Culvert D Construction (Stage 1)	50	50	0.5%	17-May-16 A	29-Jul-16	98	█	█	█		
SD0070	Box Culvert D Construction (Stage 2)	50	50	0%	08-Jun-16	06-Aug-16	-25		█	█		
SD0110	Box Culvert D Construction (Stage 3)	50	50	0%	27-Aug-16	27-Oct-16	-51				█	
<b>047 - Fresh Water Pumping Station, Portion A1 &amp; A2</b>												
A04710	Piling 4nr. (2 cast)	34	17	50%	29-Apr-16 A	20-Jun-16	-84	█	█			
A04720	Excavation + Blinding	12	12	0%	21-Jun-16	05-Jul-16	-84		█			
A04730	Pile Testing	7	7	0%	05-Jul-16	13-Jul-16	-84			█		
A04740	Water Tank Construction	58	58	0%	14-Jul-16	20-Sep-16	-84				█	
<b>049 - Sewage Treatment Plant, Portion A1 &amp; A2</b>												
A04940	Bored Piling (39 Nr.) (24 Nr. cast)	148	37	75%	29-Dec-15 A	14-Jul-16	-189	█	█	█		
A04945	Removal of Surcharge	22	22	0%	15-Jul-16	09-Aug-16	-189			█		
A04950	Sheet Piling as ELS1 for Equalization Tanks	13	13	0%	10-Aug-16	24-Aug-16	-189				█	
A04960	Sheet Piling as ELS2 for Sludge Holding Tanks	13	13	0%	10-Aug-16	24-Aug-16	-179				█	
A04970	Sheet Piling as ELS3 for Basement	25	25	0%	25-Aug-16	23-Sep-16	-173				█	
A04980	Pile Testing in ELS1	7	7	0%	25-Aug-16	01-Sep-16	-189				█	
B04910	Pile Testing for others	7	7	0%	25-Aug-16	01-Sep-16	-179				█	
<b>Portion A1 Buildings</b>												
<b>012 - DOH Disinsection Area and Store Room 1, at Portion A1</b>												
A01210	Excavation & Blinding (+ PL Test)	10	9	10%	30-May-16 A	10-Jun-16	15		█			
A01220	Raft Foundation	20	20	0%	11-Jun-16	05-Jul-16	15		█			
A01240	Superstructure	35	35	0%	06-Jul-16	15-Aug-16	15			█		
A01250	Finishing	80	80	0%	16-Aug-16	19-Nov-16	88				█	
A01260	BS for Office Accomodation (Stage 8)	73	73	0%	16-Aug-16	11-Nov-16	15				█	
<b>036 - Weigh Station</b>												
A03640	Finishing	120	48	60%	13-Jan-16 A	27-Jul-16	142	█	█	█		
A03670	BS for Office Accomodation (Stage 8)	90	39	56.67%	13-Jan-16 A	16-Jul-16	103	█	█	█		
A03680	BS + E&M for Office Accomodation (Stage 9)	90	90	0%	18-Jul-16	02-Nov-16	103				█	
A03690	Other BS + E&M Installation	180	102	43.33%	02-Nov-15 A	29-Sep-16	200	█	█	█	█	
<b>037 C&amp;ED Tower Cum Inbound Cargo Examination Building (Portion A1 &amp; B)</b>												
A03730	Super Structure	110	0	100%	02-Jan-16 A	28-May-16 A		█				
A03740	Steel Frame Structure	90	90	0%	31-May-16	14-Sep-16	212		█	█	█	
A03750	Finishing	200	200	0%	31-May-16	27-Jan-17	102				█	
A03760	BS for Office Accomodation (Stage 8)	88	88	0%	31-May-16	12-Sep-16	-105				█	
A03790	Other BS + E&M Installation	235	201	14.47%	15-Dec-15 A	17-Feb-17	87	█	█	█	█	
<b>041 Fire Station Cum Ambulance Depot</b>												
A04100	Excavation + Blinding (+ PL Test)	14	14	1%	24-May-16 A	16-Jun-16	-192	█	█			

Actual Work  
 Remaining Work  
 Critical  
 Milestone

**THREE MONTH ROLLING PROGRAMME**  
**VEHICLE CLEARANCE PLAZAS AND ANCILLARY BUILDINGS AND FACILITIES**  
 Page 2 of 12

Date	Revision	Checked	Approved
31-Mar-16	3MRP updated as of 31 Mar. 2016	ZJ	
30-Apr-16	3MRP updated as of 30 Apr. 2016	ZJ	
31-May-16	3MRP updated as of 31 May 2016		

Activity ID	Activity Name	Original Duration	Remaining Duration	% Complete	Start	Finish	Total Float	2016				
								May	Jun	Jul	Aug	Sep
A04110	Substructure	84	84	0%	16-Jun-16	24-Sep-16	-192					
<b>042 Drill Tower</b>												
A04240	Substructure	35	0	100%	22-Apr-16 A	04-May-16 A						
A04250	Super Structure	69	52	25%	05-May-16 A	01-Aug-16	-27					
A04260	Finishing	80	80	0%	01-Aug-16	05-Nov-16	-27					
A04270	BS for Office Accomodation (Stage 8)	65	65	0%	01-Aug-16	19-Oct-16	31					
A04290	Other BS + E&M Installation	160	160	0%	20-Aug-16	06-Mar-17	73					
<b>043 DOH Office</b>												
A04320	Excavation + Blinding	7	0	100%	29-Mar-16 A	06-May-16 A						
A04330	Substructure	30	0	100%	07-May-16 A	26-May-16 A						
A04340	Super Structure	60	60	0%	08-Aug-16	19-Oct-16	-25					
<b>052 - Transforms (Zone 4)</b>												
A05235	Energisation by CLP	50	10	80%	24-Feb-16 A	11-Jun-16	238					
A05240	BS Installation (KD9)	66	17	75%	02-Nov-15 A	20-Jun-16	145					
A05250	Finishing (KD10)	87	9	90%	14-Dec-15 A	10-Jun-16	145					
A05260	Completion of remaining works	66	66	0%	20-Jun-16	06-Sep-16	220					
<b>105 IMMD Guard Booth, Portion A1</b>												
B10510	Excavation + Blinding	5	5	0%	11-Jun-16	16-Jun-16	87					
B10520	Substructure (Raft Foundation)	15	15	0%	16-Aug-16	01-Sep-16	37					
<b>External Works for Portion A1</b>												
<i>Drainage Works</i>												
SG0020	Drainage Works (2025m & 94MHs)	250	238	5%	16-Sep-15 A	16-Mar-17	-77					
SG0030	Sewerage (869m & 25MHs)	250	230	8%	04-Jan-16 A	07-Mar-17	-69					
<i>Waterpipe Laying</i>												
SW5010	Fresh Water Main Laying (1660m)	250	250	0%	05-Aug-16	12-Jun-17	-77					
SW6010	Flushing Water Main Laying (967m)	250	250	0%	05-Aug-16	12-Jun-17	-77					
<i>Duct Laying for Utilities/Telecom Cabling, TCSS &amp; Lighting</i>												
SU5260	Duct Laying for Utilities/Telecom Cabling	250	250	0%	05-Aug-16	12-Jun-17	-77					
<b>PORTION A2</b>												
<b>Portion A2 Structures</b>												
<b>048 - Reclaimed Water Pumping Station, Portion A2</b>												
A04820	Piling 4nr. (2 cast)	40	20	50%	25-Apr-16 A	30-Jun-16	-92					
A04830	Sheet Piling as ELS for Basement 1	12	12	0%	02-Jul-16	15-Jul-16	-92					
A04840	Pile testing	7	7	0%	16-Jul-16	23-Jul-16	-92					
A04850	Excavation + Blinding for Basement 1	10	10	0%	25-Jul-16	04-Aug-16	-92					
A04860	Basement 1 Construction	40	40	0%	05-Aug-16	21-Sep-16	-92					
<b>Retaining Wall W9-2</b>												
S90850	Construction of Retaining Wall W9-2 (U-shape, 6 bay)	120	120	0%	12-Aug-16	05-Jan-17	16					

Actual Work  
 Remaining Work  
 Critical  
 Milestone

**THREE MONTH ROLLING PROGRAMME**  
**VEHICLE CLEARANCE PLAZAS AND ANCILLARY BUILDINGS AND FACILITIES**  
 Page 3 of 12

Date	Revision	Checked	Approved
31-Mar-16	3MRP updated as of 31 Mar. 2016	ZJ	
30-Apr-16	3MRP updated as of 30 Apr. 2016	ZJ	
31-May-16	3MRP updated as of 31 May 2016		

HZMB HK Boundary Crossing Facilities - Vehicle Clearance Plazas and Ancillary Buildings and Facilities

31-May-16

Activity ID	Activity Name	Original Duration	Remaining Duration	% Complete	Start	Finish	Total Float	2016				
								May	Jun	Jul	Aug	Sep
<b>Drainage Works</b>												
B00020	Initial Survey	6	6	0%	31-May-16	06-Jun-16	-247					
<b>PORTION B</b>												
<b>Portion B Structures</b>												
<b>Retaining Wall W6-1</b>												
S62050	Construction of Retaining Wall W6-1 (L-shape, 4 bays)	80	80	0%	20-Aug-16	24-Nov-16	49					
<b>027 - Staff Subway</b>												
C02730	Bay 4 - 13 Construction - Wall + Top Slab	30	10	66.67%	15-Dec-15 A	11-Jun-16	-100					
C02740	Bay 14-19 Construction - Base Slab	21	0	100%	06-Jan-16 A	20-May-16 A						
C02750	Bay 14-19 Construction - Wall + Top Slab	30	26	13.33%	17-Feb-16 A	30-Jun-16	-116					
C02760	Internal Finishes & Cable Containment (KD1)	30	30	0%	13-Jun-16	18-Jul-16	-95					
C02770	BS + E&M Installation for ACVSS (Stage 1)	30	30	0%	23-Jun-16	28-Jul-16	-95					
<b>028 - Staff Subway</b>												
C02820	Bay 20-24 Construction - Base Slab	28	21	25%	25-Feb-16 A	06-Oct-16	-190					
<b>029 - Staff Subway</b>												
C02920	Bay 25-29 Construction - Base Slab	22	13	40%	03-May-16 A	16-Jun-16	-90					
C02930	Bay 25-29 Construction - Wall + Top Slab	28	28	0%	13-Jun-16	15-Jul-16	-100					
C02940	Bay 30-33 Construction - Base Slab	21	20	5%	30-Apr-16 A	23-Jun-16	-90					
C02950	Bay 30-33 Construction - Wall + Top Slab	27	27	0%	02-Jul-16	02-Aug-16	-116					
C02960	Internal Finishes & Cable Containment (KD1)	21	21	0%	21-Jul-16	13-Aug-16	-116					
C02970	BS + E&M Installation for ACVSS (Stage 1)	20	20	0%	30-Jul-16	22-Aug-16	-116					
<b>Portion B Buildings</b>												
<b>027/028 Inbound Kiosks &amp; 029 Outbound Kiosks</b>												
A02700	Submission & Approval for Steel Works	50	50	0%	01-Apr-16 A	29-Jul-16	-208					
A02710	Pre-fabrication for the Steel Kiosks	100	100	0%	30-Jul-16	26-Nov-16	-208					
<b>027/028 Inbound Kiosks &amp; 029 Outbound Kiosks, Section IX, Subject to Excision</b>												
B02730	Submission & Approval for Steel Works	75	50	33.33%	01-Apr-16 A	29-Jul-16	-68					
B02740	Pre-fabrication for the Steel Kiosks	100	100	0%	30-Jul-16	26-Nov-16	-68					
<b>026 Inbound IMMD and DOH Secondary Screening Building</b>												
A02630	Super Structure	70	28	60%	16-Feb-16 A	18-Jul-16	-14					
A02640	Finishing	75	75	0%	19-Jul-16	17-Oct-16	187					
A02670	BS for Office Accommodation (Stage 8)	90	90	0%	19-Jul-16	03-Nov-16	12					
A02690	Other BS + E&M Installation	180	171	5%	01-Feb-16 A	03-Mar-17	75					
<b>054 Inbound Fixed X-ray Building</b>												
A05440	Super Structure for Tx Room	60	24	60%	02-Mar-16 A	28-Jun-16	-159					
A05450	Other Superstructure	65	65	0%	29-Jun-16	13-Sep-16	-157					
A05460	Finishing	150	150	0%	29-Jun-16	24-Dec-16	128					
A05465	BS + E&M for Tx Room to CLP (Stage 5)	97	97	0%	29-Jun-16	24-Oct-16	-159					

- Actual Work
- Remaining Work
- Critical
- Milestone

THREE MONTH ROLLING PROGRAMME  
VEHICLE CLEARANCE PLAZAS AND ANCILLARY BUILDINGS AND FACILITIES

Page 4 of 12

Date	Revision	Checked	Approved
31-Mar-16	3MRP updated as of 31 Mar. 2016	ZJ	
30-Apr-16	3MRP updated as of 30 Apr. 2016	ZJ	
31-May-16	3MRP updated as of 31 May 2016		

**HZMB HK Boundary Crossing Facilities - Vehicle Clearance Plazas and Ancillary Buildings and Facilities**

**31-May-16**

Activity ID	Activity Name	Original Duration	Remaining Duration	% Complete	Start	Finish	Total Float	2016				
								May	Jun	Jul	Aug	Sep
A05490	Other BS + E&M Installation	180	171	5%	08-Feb-16 A	06-May-17	26					
<b>038 AFCD Office</b>												
A03810	Excavation + Blinding	7	7	0%	27-Jun-16	05-Jul-16	-178					
<b>039 Police Main Building</b>												
A03910	Excavation + Blinding	12	12	0%	31-May-16	14-Jun-16	-245					
A03920	Substructure	70	70	0%	15-Jun-16	05-Sep-16	-245					
<b>040 Incident Control Tower</b>												
A04010	Excavation + Blinding	10	10	0%	15-Jun-16	25-Jun-16	-185					
<b>Glass Wall</b>												
C04010	Shop Drawing Submission and Approval	30	30	0%	06-Aug-16	09-Sep-16	-166					
<b>102 HKPF UVSS Monitor Room</b>												
A10200	Excavation + Blinding	7	0	100%	16-Apr-16 A	30-Apr-16 A						
A10210	Substructure (Raft Foundation)	45	0	100%	03-May-16 A	19-May-16 A						
A10220	Super Structure	45	41	10%	20-May-16 A	19-Jul-16	32					
A10230	Finishing (False Ceiling) (KD9)	70	70	0%	19-Jul-16	12-Oct-16	51					
A10240	BS for Office Accommodation (Stage 8)	80	80	0%	19-Jul-16	24-Oct-16	32					
A10270	Other BS + E&M Installation	150	150	0%	06-Aug-16	08-Feb-17	96					
<b>103 Police Inspection Post</b>												
A10310	Excavation + Blinding	5	5	0%	08-Jun-16	14-Jun-16	-101					
<b>HPL Composite Panel Cladding System</b>												
B10310	Shop Drawing Submission and Approval	30	30	0%	25-Jul-16	27-Aug-16	-38					
B10320	Fabrication of HPL Cladding	60	60	0%	29-Aug-16	09-Nov-16	-38					
<b>057 Transformers (Zone 2)</b>												
A05710	Excavation + Blinding	10	10	0%	31-May-16	11-Jun-16	-255					
A05720	Raft Foundation	52	52	0%	13-Jun-16	12-Aug-16	-255					
A05730	Superstructure	65	65	0%	13-Aug-16	31-Oct-16	-255					
<b>107 - C&amp;ED Mobile X-ray Operation Office (Cargo), Portion B</b>												
C10710	Excavation + Blinding	7	7	0%	31-May-16	07-Jun-16	-101					
C10720	Raft Foundation	32	32	0%	08-Jun-16	16-Jul-16	-89					
C10730	Superstructure (Roof Slabs)	62	62	0%	18-Jul-16	28-Sep-16	-89					
<b>113 - Field Kiosk for Access Control, Portion B</b>												
B11310	Excavation + Blinding	7	7	0%	15-Jun-16	22-Jun-16	-101					
B11320	Raft Foundation	32	32	0%	23-Jun-16	30-Jul-16	-101					
B11330	Superstructure (Roof Beams & Slabs)	60	60	0%	01-Aug-16	12-Oct-16	-101					
<b>External Works for Portion B</b>												
<b>Drainage Works</b>												
SG1540	Drainage Works (4397m & 174MHs)	300	225	25%	17-Dec-15 A	01-Mar-17	-130					
SG3580	Sewerage (1330m & 34MHs)	300	240	20%	02-Jan-16 A	18-Mar-17	-130					
<b>Waterpipe Laying</b>												
SW1550	Fresh Water Main Laying (1972m)	300	300	0%	31-May-16	05-Jun-17	-130					
SW1560	Flushing Water Main Laying (1851m)	300	300	0%	31-May-16	05-Jun-17	-130					
<b>Duct Laying for Utilities/Telecom Cabling, TCSS &amp; Lighting</b>												
SU5300	Duct Laying for Utilities/Telecom Cabling	300	300	0%	31-May-16	05-Jun-17	-130					
<b>Roadworks</b>												

- Actual Work
- Remaining Work
- Critical
- Milestone

**THREE MONTH ROLLING PROGRAMME  
VEHICLE CLEARANCE PLAZAS AND ANCILLARY BUILDINGS AND FACILITIES**

Date	Revision	Checked	Approved
31-Mar-16	3MRP updated as of 31 Mar. 2016	ZJ	
30-Apr-16	3MRP updated as of 30 Apr. 2016	ZJ	
31-May-16	3MRP updated as of 31 May 2016		

**HZMB HK Boundary Crossing Facilities - Vehicle Clearance Plazas and Ancillary Buildings and Facilities** 31-May-16

Activity ID	Activity Name	Original Duration	Remaining Duration	% Complete	Start	Finish	Total Float	2016				
								May	Jun	Jul	Aug	Sep
SR1640	Subbase (43152 ton)	342	342	0%	07-Jun-16	01-Aug-17	-130					
SR3590	Bitumen Pavement (61126 ton)	342	342	0%	07-Jul-16	29-Aug-17	-130					
SR3600	Rigid Pavement (594 m3), Footpath & EVA	342	342	0%	07-Jul-16	29-Aug-17	-130					
<b>Sign Gantry ADS 306A &amp; ADS 306B</b>												
SS0150	Testing	30	0	100%	06-Apr-16 A	07-May-16 A						
SS5230	Submission and approval for Sign Gantry	100	80	20%	03-May-16 A	02-Sep-16	-128					
<b>PORTION C</b>												
<b>Portion C Buildings</b>												
<b>010 - Inbound Coach Kiosk &amp; Staff Subway Entrance</b>												
A01010	Substructure and Staircase Construction	60	60	0%	31-May-16	10-Aug-16	-211					
A01020	Kiosk Superstructure	100	100	0%	11-Aug-16	08-Dec-16	-211					
<b>009 - Shuttle Bus Kiosk &amp; Staff Subway Entrance</b>												
A00910	ELS + Blinding (Bay 0-3) (4 bay)	42	10	76.19%	06-May-16 A	11-Jun-16	-186					
A00920	Constructing Base Slab of Bay 0-3 (Bay 3 cast)	28	21	25%	14-May-16 A	07-Jul-16	-186					
A00930	Constructing Wall + Top Slab of Bay 0-3	37	37	0%	21-Jun-16	03-Aug-16	-186					
A00940	Finishing	30	30	0%	15-Jul-16	18-Aug-16	-186					
A00950	BS + E&M for AVCSS works (Stage 1)	30	30	0%	25-Jul-16	27-Aug-16	-186					
B00910	Substructure and Staircase Construction (Portion B&C)	43	43	0%	29-Aug-16	20-Oct-16	-186					
<b>104 - DOH Secondary Screening Station, at Portion C</b>												
<b>Facade Cladding System</b>												
A10460	Shop Drawing Submission and Approval	30	30	0%	27-Aug-16	03-Oct-16	-18					
<b>110 IMMID Guard Booth (Type 2)</b>												
<b>Facade Envelop Structure Installation</b>												
A11040	Shop Drawing Submission and Approval	30	30	0%	27-Aug-16	03-Oct-16	13					
<b>111 Field Kiosk for Carpark Operator</b>												
A11120	Excavation & Blinding	5	5	0%	27-Aug-16	01-Sep-16	-69					
<b>HPL Composite Panel Cladding System</b>												
B11110	Shop Drawing Submission and Approval	30	30	0%	27-Aug-16	03-Oct-16	13					
<b>113 - Field Kiosk for Access Control, Portion C</b>												
C11310	Excavation & Blinding	5	5	0%	27-Aug-16	01-Sep-16	-94					
<b>External Works for Portion C</b>												
<b>Works in Location 1.2, 1.8 &amp; 011 - Emergency Generator Building</b>												
BB1440	Works in Location 1.2	90	90	0%	31-May-16	14-Sep-16	122					
<b>Drainage Works</b>												
B00040	Initial Survey	12	12	0%	27-Aug-16	09-Sep-16	-239					
<b>PORTION D</b>												
<b>External Works for Portion D</b>												
<b>Drainage Works</b>												
B00050	Initial Survey	6	6	0%	01-Jun-16	07-Jun-16	-27					
SG3640	Drainage Works (555m & 13MHs)	90	90	0%	08-Jun-16	23-Sep-16	-27					
SG3760	Sewerage (121m & 6MHs)	100	100	0%	08-Jun-16	06-Oct-16	-27					
<b>Waterpipe Laying</b>												
SW3650	Fresh Water Main Laying (108m)	100	100	0%	08-Aug-16	05-Dec-16	-27					
<b>Duct Laying for Utilities/Telecom Cabling, TCSS &amp; Lighting</b>												

Actual Work  
 Remaining Work  
 Critical  
 Milestone

**THREE MONTH ROLLING PROGRAMME**  
**VEHICLE CLEARANCE PLAZAS AND ANCILLARY BUILDINGS AND FACILITIES**  
 Page 6 of 12

Date	Revision	Checked	Approved
31-Mar-16	3MRP updated as of 31 Mar. 2016	ZJ	
30-Apr-16	3MRP updated as of 30 Apr. 2016	ZJ	
31-May-16	3MRP updated as of 31 May 2016		



Activity ID	Activity Name	Original Duration	Remaining Duration	% Complete	Start	Finish	Total Float	2016				
								May	Jun	Jul	Aug	Sep
SU5340	Duct Laying for Utilities/Telecom Cabling	100	100	0%	08-Aug-16	05-Dec-16	-3					
SU5350	Duct Laying for TCSS & Lighting	100	100	0%	08-Aug-16	05-Dec-16	-3					
<b>PORTION E</b>												
<b>Portion E Building</b>												
<i>006 - Shuttle Bus Kiosk &amp; Staff Subway Entrance, at Portion E &amp; M</i>												
A00610	ELS + Blinding for Subway	12	12	0%	09-Aug-16	22-Aug-16	-126					
A00620	Constructing base of Subway	25	25	0%	23-Aug-16	21-Sep-16	-126					
<b>External Works for Portion E</b>												
<i>Drainage Works</i>												
B00060	Initial Survey	6	6	0%	31-May-16	06-Jun-16	-74					
<b>PORTION G, H1 &amp; H2</b>												
<b>Portion G Structures</b>												
<i>Box Culvert C</i>												
<b>Steel H Pile</b>												
SC5130	Box C - 164 nos. of driven H pile	60	60	0%	31-May-16	10-Aug-16	-91					
SC5530	Testing	50	50	0%	14-Jul-16	09-Sep-16	-77					
<b>Box Culvert Structure</b>												
SC0310	Box C - Branch Construction	45	45	0%	11-Aug-16	04-Oct-16	-13					
SC0380	Box C - Construction of Main Body	142	142	0%	11-Aug-16	02-Feb-17	-91					
<b>Bridge A1</b>												
<b>Bored Pile</b>												
S10120	Bore pile, 10 nos. (6 No. cast)	58	0	100%	01-Mar-16 A	10-May-16 A						
S10140	Pile Testing	7	0	100%	11-May-16 A	23-May-16 A						
<b>Pile Cap</b>												
S10510	Cap - Pier A106	30	30	0%	31-May-16	06-Jul-16	34					
S10520	Cap - Pier P103, P104	30	27	10%	24-May-16 A	02-Jul-16	37					
S10530	Cap - Pier P102, P105	30	30	0%	07-Jul-16	10-Aug-16	34					
<b>Pier &amp; Abutment</b>												
S10610	Abutment A106	30	30	0%	07-Jul-16	10-Aug-16	72					
S10620	Pier P103, P104	25	25	0%	04-Jul-16	01-Aug-16	67					
S10630	Pier P102, P105	25	25	0%	11-Aug-16	08-Sep-16	34					
<b>Bridge A2</b>												
<b>Pile Cap</b>												
S21850	Cap - Pier P203	30	0	100%	16-Apr-16 A	20-May-16 A						
S21870	Cap - Pier P202, P204 (cast)	30	0	100%	23-Feb-16 A	17-May-16 A						
<b>Pier &amp; Abutment</b>												
S21420	Pier P203	25	25	0%	31-May-16	29-Jun-16	94					
S21440	Pier P202, P204 (cast)	25	13	50%	30-Mar-16 A	15-Jun-16	107					
<b>Structure Deck</b>												
S21570	Construct Deck, Bridge A2	120	118	2%	23-May-16 A	25-Aug-17	-132					
<b>Bridge A3</b>												
<b>Bored Pile</b>												
S31630	Bore piling for A305, P304a/b (5 Nr.)	43	43	0%	11-Jul-16	29-Aug-16	-68					

 Actual Work  
 Remaining Work  
 Critical  
 Milestone

**THREE MONTH ROLLING PROGRAMME**  
**VEHICLE CLEARANCE PLAZAS AND ANCILLARY BUILDINGS AND FACILITIES**  
 Page 7 of 12

Date	Revision	Checked	Approved
31-Mar-16	3MRP updated as of 31 Mar. 2016	ZJ	
30-Apr-16	3MRP updated as of 30 Apr. 2016	ZJ	
31-May-16	3MRP updated as of 31 May 2016		



HZMB HK Boundary Crossing Facilities - Vehicle Clearance Plazas and Ancillary Buildings and Facilities								31-May-16				
Activity ID	Activity Name	Original Duration	Remaining Duration	% Complete	Start	Finish	Total Float	2016				
								May	Jun	Jul	Aug	Sep
S31640	Bore piling for P302, P303, A305 (6Nr.)	34	34	0%	30-Aug-16	11-Oct-16	-68					
<b>Pier &amp; Abutment</b>												
S32110	Pier P301	25	0	100%	25-Apr-16 A	09-May-16 A						
<b>Bridge A4</b>												
<b>Bored Pile</b>												
S42320	Bore pile 4 Nr.	33	33	0%	31-May-16	09-Jul-16	-197					
S42340	Pile Testing	7	7	0%	21-Jul-16	28-Jul-16	-197					
<b>Pile Cap</b>												
S42360	Cap - Pier P401	30	30	0%	29-Jul-16	01-Sep-16	-197					
S42370	Cap - Pier P402	30	30	0%	29-Jul-16	01-Sep-16	-197					
<b>Bridge A5</b>												
<b>Bored Pile</b>												
S52630	Bore piling for 19 Nr. (1 cast)	60	54	10%	17-May-16 A	03-Aug-16	-147					
S52640	Pile Testing for P504, P505	7	7	0%	25-Jun-16	04-Jul-16	-141					
S52650	Pile Testing for A503 & P506	7	7	0%	08-Aug-16	15-Aug-16	-147					
S52660	Pile Testing for A501 & P502a/b, P507	7	7	0%	15-Aug-16	22-Aug-16	-133					
<b>Pile Cap</b>												
S52710	Cap for P504, P505	30	30	0%	05-Jul-16	08-Aug-16	-141					
S52720	Cap - Pier P503, P506	30	30	0%	16-Aug-16	20-Sep-16	-147					
S52730	Cap - Pier A501, P502a/b, P507	35	35	0%	23-Aug-16	04-Oct-16	-133					
<b>Pier &amp; Abutment</b>												
S52800	Pier P504, P505	25	25	0%	09-Aug-16	06-Sep-16	-136					
<b>Bridge A6</b>												
<b>Bored Pile</b>												
S63520	Bore pile for other 8 Nr. (8 Nr. cast)	58	0	100%	11-Jan-16 A	30-Apr-16 A						
S63720	Pile Testing for 606, A607/A711	7	0	100%	23-Apr-16 A	30-Apr-16 A						
S63730	Pile Testing for P604, P605	7	0	100%	23-Apr-16 A	30-Apr-16 A						
S63740	Pile Testing for 602, P603	7	0	100%	23-Apr-16 A	30-Apr-16 A						
<b>Pile Cap</b>												
S63410	Cap - P606, P607/711	40	38	5%	24-May-16 A	15-Jul-16	-143					
S63430	Cap - P604, P605	30	29	5%	20-May-16 A	05-Jul-16	-124					
S63440	Cap - P602, P603	30	29	5%	14-May-16 A	06-Aug-16	-124					
<b>Pier &amp; Abutment</b>												
S63350	Pier P601, P606	25	13	50%	29-Mar-16 A	30-Jul-16	-143					
S63360	Pier P604, P605	25	25	0%	30-Jul-16	29-Aug-16	-143					
S63370	Pier P602, P603	25	25	0%	29-Aug-16	28-Sep-16	-143					
S63380	Abutment A607	30	30	0%	16-Jul-16	19-Aug-16	-110					
<b>Bridge A7a, A7b, A7c</b>												
<b>Bored Pile</b>												
S74170	Bore Piling for A701, P702 - P705, 10 Nr. (2 Nr. done)	42	34	20%	20-Nov-15 A	12-Sep-16	-106					

Actual Work  
 Remaining Work  
 Critical  
 Milestone

**THREE MONTH ROLLING PROGRAMME**  
**VEHICLE CLEARANCE PLAZAS AND ANCILLARY BUILDINGS AND FACILITIES**  
 Page 8 of 12

Date	Revision	Checked	Approved
31-Mar-16	3MRP updated as of 31 Mar. 2016	ZJ	
30-Apr-16	3MRP updated as of 30 Apr. 2016	ZJ	
31-May-16	3MRP updated as of 31 May 2016		

HZMB HK Boundary Crossing Facilities - Vehicle Clearance Plazas and Ancillary Buildings and Facilities

31-May-16

Activity ID	Activity Name	Original Duration	Remaining Duration	% Complete	Start	Finish	Total Float	2016					
								May	Jun	Jul	Aug	Sep	
S74910	Pile Testing for P704, P705	7	0	100%	05-Oct-15 A	30-Apr-16 A							
<b>Pile Cap</b>													
S74210	Cap for P706, P707, P712	30	30	0%	31-May-16	06-Jul-16	-12						
S74220	Cap for P704, P705	30	30	0%	31-May-16	06-Jul-16	-17						
S74250	Cap for P708, P709	30	0	100%	12-Apr-16 A	10-May-16 A							
S74270	Cap for P710	30	30	0%	31-May-16	06-Jul-16	38						
<b>Pier &amp; Abutment</b>													
S74310	Pier P706, P707, P712	25	25	0%	07-Jul-16	04-Aug-16	-12						
S74320	Pier P704, P705	25	25	0%	05-Aug-16	02-Sep-16	-12						
S74450	Abutment A711	30	30	0%	20-Aug-16	24-Sep-16	-5						
<b>Bridge A8</b>													
<b>Bored Pile</b>													
S86130	Bore pile P802, P803, A804, 6 Nr. (4 Nr. cast)	87	22	75%	27-Jan-16 A	25-Jun-16	4						
S86140	Pile Testing for A804	7	7	0%	08-Jul-16	16-Jul-16	4						
S86150	Pile Testing for P802, P803	7	7	0%	08-Jul-16	16-Jul-16	34						
<b>Pile Cap</b>													
S86210	Cap - Abutment A804	30	30	0%	16-Jul-16	20-Aug-16	4						
S86220	Cap for P802, P803	30	30	0%	20-Aug-16	26-Sep-16	4						
<b>Pier &amp; Abutment</b>													
S86250	Abutment A804	30	30	0%	20-Aug-16	26-Sep-16	6						
<b>Retaining Walls W1-1, W3-1, W5-1 &amp; W7-1</b>													
<b>Retaining Wall W1-1</b>													
S18110	Construction of Retaining Wall W1-1 (L-shape, 4 bays)	80	80	0%	11-Aug-16	15-Nov-16	72						
<b>Portion G Buildings</b>													
<b>033 Inbound Private Car Exam Building</b>													
A03320	Super Structure	40	36	10%	11-May-16 A	14-Sep-16	-58						
<b>Glass Canopy Installation</b>													
B03300	Shop Drawing Submission and Approval	30	30	0%	20-Jul-16	23-Aug-16	-9						
B03305	Fabrication of Glass Canopy	60	60	0%	24-Aug-16	04-Nov-16	-9						
<b>Aluminium Metal Canopy</b>													
B03310	Shop Drawing Submission and Approval	30	30	0%	20-Jul-16	23-Aug-16	6						
B03315	Fabrication of F/C System	60	60	0%	24-Aug-16	04-Nov-16	6						
<b>034 Satellite RCP South</b>													
A03400	Excavation + Blinding (+ PL Test)	5	5	10%	25-May-16 A	16-Jun-16	19						
<b>035 - Sewage Pumping Station, Portion G</b>													
A03540	Sheet Piling as ELS for Wet Well	12	12	0%	31-May-16	14-Jun-16	-61						
A03550	Pile Testing, 5 Nr.	7	7	0%	15-Jun-16	22-Jun-16	-61						
A03560	ELS + Blinding for Wet Well	10	10	0%	23-Jun-16	05-Jul-16	-61						
A03570	Constructing of Base Slab of Wet Well	20	20	0%	06-Jul-16	28-Jul-16	-61						
A03580	Constructing of Wall Stem of Wet Well	25	25	0%	29-Jul-16	26-Aug-16	-61						
A03590	Water-tightness Test for Wet Wells	12	12	0%	27-Aug-16	09-Sep-16	-61						
<b>051 Transformers (Zone 5)</b>													
A05150	Finishing	60	57	5%	16-May-16 A	06-Aug-16	96						
A05160	BS + E&M for Tx Room to CLP (Stage 3A)	59	59	0%	31-May-16	09-Aug-16	-97						

- Actual Work
- Remaining Work
- Critical
- Milestone

**THREE MONTH ROLLING PROGRAMME**  
**VEHICLE CLEARANCE PLAZAS AND ANCILLARY BUILDINGS AND FACILITIES**  
 Page 9 of 12

Date	Revision	Checked	Approved
31-Mar-16	3MRP updated as of 31 Mar. 2016	ZJ	
30-Apr-16	3MRP updated as of 30 Apr. 2016	ZJ	
31-May-16	3MRP updated as of 31 May 2016		

**HZMB HK Boundary Crossing Facilities - Vehicle Clearance Plazas and Ancillary Buildings and Facilities**

31-May-16

Activity ID	Activity Name	Original Duration	Remaining Duration	% Complete	Start	Finish	Total Float	2016				
								May	Jun	Jul	Aug	Sep
A05165	Energisation by CLP	50	50	0%	10-Aug-16	08-Oct-16	137					
A05170	BS for Office Accommodations (KD9)	70	70	0%	10-Aug-16	02-Nov-16	32					
A05190	Other BS + E & M Installation	150	147	2%	22-Feb-16 A	07-Feb-17	96					
<b>100 Inbound Traffic Control Kiosk</b>												
A10000	Excavation + Blinding (PL test commenced on 26/1/16)	5	5	0%	04-Jun-16	10-Jun-16*	-106					
A10010	Raft Foundation	15	15	0%	11-Jun-16	28-Jun-16	-106					
A10040	Super Structure (Roof Beams & Slabs)	30	30	0%	29-Jun-16	03-Aug-16	-106					
A10050	Finishing	45	45	0%	04-Aug-16	26-Sep-16	-106					
A10070	BS + E&M for AVCSS Works (KD18A)	86	86	0%	04-Aug-16	15-Nov-16	-106					
<b>HPL Composite Panel Cladding System</b>												
B10010	Shop Drawing Submission and Approval	30	30	0%	31-May-16	06-Jul-16	97					
B10015	Fabrication of F/C System	60	60	0%	07-Jul-16	14-Sep-16	97					
<b>External Works for Portion G, H1 &amp; H2</b>												
<i>Works within Portion H1 &amp; H2 except the ELV Works in the Hong Kong Side PT1</i>												
BB1560	Works within Portion H1 & H2 in the Hong Kong Side PT1 (KD20)	100	100	0.5%	30-May-16 A	14-Jul-17	-118					
<b>Drainage Works</b>												
B00080	Initial Survey	12	12	0%	31-May-16	14-Jun-16	-152					
SG4070	Drainage Works (3748m & 191MHs)	84	82	2.5%	03-May-16 A	20-Apr-17	-29					
<b>Sign Gantry DS40, DS41 &amp; DS75</b>												
SS0020	Sign Gantry DS40 Pre-bored H Piling, 12 Nr.	30	30	0%	31-May-16	06-Jul-16	92					
SS0040	Sign Gantry DS41 Driven Piling 4 Nr.	7	7	0%	11-Aug-16	18-Aug-16	115					
SS0080	Testing for Pre-bored H Piling	50	50	0%	30-Jul-16	27-Sep-16	102					
SS0160	Testing for Driven Piling	50	0	100%	04-May-16 A	28-May-16 A						
SS0170	Submission and approval for Sign Gantry	90	90	0%	31-May-16	14-Sep-16	-138					
<b>PORTION J</b>												
<b>Portion J Structure</b>												
<b>030 Outbound Staff Subway (Portion J)</b>												
B03010	ELS + blinding (Bay 34-41) (8 bay)	55	55	0%	02-Jul-16	03-Sep-16	-103					
B03020	Bay 34-39 Construction - Base Slab	34	34	0%	10-Aug-16	19-Sep-16	-102					
B03040	Bay 40-41 Construction - Base Slab	34	34	0%	10-Aug-16	19-Sep-16	-103					
<b>030 Outbound Private Car &amp; GV Kiosks</b>												
A03010	Submission & Approval for Steel Works	60	50	16.67%	01-Apr-16 A	29-Jul-16	-117					
A03020	Pre-fabrication for the Steel Kiosks	84	84	0%	30-Jul-16	08-Nov-16	-117					
<b>030 Outbound Kiosks, Section IX, Subject to Excision</b>												
C03010	Submission & Approval for Steel Works	100	50	50%	01-Apr-16 A	29-Jul-16	-68					
C03020	Pre-fabrication for the Steel Kiosks	100	100	0%	30-Jul-16	26-Nov-16	-68					
<b>Portion J Buildings</b>												
<b>024 Outbound Private Car Exam Building</b>												
A02400	Excavation + Blinding	10	10	0%	08-Jul-16	19-Jul-16	-68					
A02410	Raft Foundation	30	30	0%	20-Jul-16	23-Aug-16	-68					
A02420	Super Structure	40	40	0%	24-Aug-16	12-Oct-16	-68					
<b>Glass Canopy Installation</b>												
B02410	Shop Drawing Submission and Approval	30	30	0%	02-Jul-16	05-Aug-16	6					

- █ Actual Work
- ▬ Remaining Work
- █ Critical
- ◆ Milestone

**THREE MONTH ROLLING PROGRAMME  
VEHICLE CLEARANCE PLAZAS AND ANCILLARY BUILDINGS AND FACILITIES**

Page 10 of 12

Date	Revision	Checked	Approved
31-Mar-16	3MRP updated as of 31 Mar. 2016	ZJ	
30-Apr-16	3MRP updated as of 30 Apr. 2016	ZJ	
31-May-16	3MRP updated as of 31 May 2016		

**HZMB HK Boundary Crossing Facilities - Vehicle Clearance Plazas and Ancillary Buildings and Facilities**

31-May-16

Activity ID	Activity Name	Original Duration	Remaining Duration	% Complete	Start	Finish	Total Float	2016				
								May	Jun	Jul	Aug	Sep
B02415	Fabrication of F/C System	60	60	0%	06-Aug-16	18-Oct-16	6					
<b>Aluminium Metal Canopy</b>												
B02450	Shop Drawing Submission and Approval	30	30	0%	02-Jul-16	05-Aug-16	21					
B02455	Fabrication of F/C System	60	60	0%	06-Aug-16	18-Oct-16	21					
<b>031 Outbound IMMD and DOH Secondary Screen Building</b>												
A03100	Excavation + Blinding	10	10	0%	02-Jul-16	13-Jul-16	-14					
A03110	Raft Foundation	35	35	0%	14-Jul-16	23-Aug-16	-14					
A03140	Super Structure	89	89	0%	24-Aug-16	08-Dec-16	-14					
<b>061 Telecom Building</b>												
A06120	Excavation + Blinding	5	5	0%	02-Jul-16	07-Jul-16	-5					
A06130	Raft Foundation	25	25	0%	19-Jul-16	16-Aug-16	-14					
A06140	Super Structure	40	40	0%	17-Aug-16	04-Oct-16	-14					
<b>Aluminium Metal Canopy</b>												
B06110	Shop Drawing Submission and Approval	30	30	0%	25-Aug-16	29-Sep-16	35					
<b>101 Outbound Traffic Control Kiosk</b>												
A10100	Excavation + Blinding	5	5	0%	02-Jul-16	07-Jul-16	-99					
<b>HPL Composite Panel Cladding System</b>												
B10110	Shop Drawing Submission and Approval	30	30	0%	02-Jul-16	05-Aug-16	56					
B10120	Fabrication of HPL Cladding	60	60	0%	06-Aug-16	18-Oct-16	56					
<b>External Works for Portion J</b>												
<b>Drainage Works</b>												
B00110	Initial Survey	6	6	0%	02-Jul-16	08-Jul-16	-79					
SG4220	Drainage Works (3435m & 117MHs)	180	178	1%	25-Apr-16 A	01-Mar-17	-92					
SG4340	Sewerage (845m & 22MHs)	180	180	0%	25-Jul-16	01-Mar-17	-92					
<b>Waterpipe Laying</b>												
SW4230	Fresh Water Main Laying (1541m)	180	180	0%	25-Aug-16	01-Apr-17	-92					
SW4240	Flushing Water Main Laying (862m)	180	180	0%	25-Aug-16	01-Apr-17	-92					
<b>Duct Laying for Utilities/Telecom Cabling, TCSS &amp; Lighting</b>												
SU5420	Duct Laying for Utilities/Telecom Cabling	180	180	0%	25-Aug-16	01-Apr-17	-92					
SU5430	Duct Laying for TCSS & Lighting	180	180	0%	25-Aug-16	01-Apr-17	-92					
<b>Sign Gantry DS104</b>												
SS0140	Sign Gantry DS104 P-bored Piling, 8 Nr.	30	30	0%	07-Jul-16	10-Aug-16	92					
SS5140	Submission and approval for Sign Gantry	60	60	0%	02-Jul-16	09-Sep-16	-64					
<b>PORTION K, L &amp; M</b>												
<b>Portion K Building</b>												
<b>002 - C&amp;ED Observation Guard Booth</b>												
A00210	Excavation + Blinding	5	5	0%	13-Aug-16	18-Aug-16	-52					
<b>Portion M Buildings</b>												
<b>108 - C&amp;ED Mobile X-ray Operation Office, Portion M</b>												
B10800	Excavation + Blinding	5	5	0%	02-Aug-16	06-Aug-16	-112					
B10810	Substructure (raft Foundation)	20	20	0%	08-Aug-16	30-Aug-16	-112					
<b>HPL Composite Panel Cladding System</b>												
C10810	Shop Drawing Submission and Approval	30	30	0%	02-Aug-16	05-Sep-16	-11					
<b>104 DOH Screening Station, at Portion M</b>												
C10400	Excavation + Blinding	5	5	0%	08-Aug-16	12-Aug-16	-67					
<b>Facade Envelop Structure Installation</b>												
D10450	Shop Drawing Submission and Approval	30	30	0%	02-Aug-16	05-Sep-16	34					

- █ Actual Work
- ▭ Remaining Work
- █ Critical
- ◆ Milestone

**THREE MONTH ROLLING PROGRAMME**  
**VEHICLE CLEARANCE PLAZAS AND ANCILLARY BUILDINGS AND FACILITIES**  
 Page 11 of 12

Date	Revision	Checked	Approved
31-Mar-16	3MRP updated as of 31 Mar. 2016	ZJ	
30-Apr-16	3MRP updated as of 30 Apr. 2016	ZJ	
31-May-16	3MRP updated as of 31 May 2016		

**HZMB HK Boundary Crossing Facilities - Vehicle Clearance Plazas and Ancillary Buildings and Facilities**

31-May-16

Activity ID	Activity Name	Original Duration	Remaining Duration	% Complete	Start	Finish	Total Float	2016				
								May	Jun	Jul	Aug	Sep
<b>Additional Works (Filling &amp; RE Slope) &amp; Drainage Works</b>												
SG0010	Initial Survey for Portion K, L, & M	6	6	0%	02-Aug-16	08-Aug-16	-126					
SG0090	Additional Works (Filling & RE Slope)	148	148	0%	02-Aug-16	27-Jan-17	-112					
<b>Slope Works at Portion M</b>												
SL0020	Cutting Existing Slope	30	30	0%	09-Aug-16	12-Sep-16	-112					
<b>Canopy and Covered Walkway</b>												
CC1400	Shop drawing, Approved & Fabrication	136	136	0%	02-Aug-16	13-Jan-17	-86					
<b>PORTION N</b>												
<b>Portion N Structure</b>												
<b>Box Culvert B</b>												
<b>Bored Pile</b>												
SB0570	Box B - Bore Pile, 30 nos.	85	85	0%	02-Aug-16	11-Nov-16	-27					
<b>Portion N Buildings</b>												
<b>104 DOH Screening Station, at Portion N</b>												
C10405	Excavation + Blinding	5	5	0%	02-Aug-16	06-Aug-16	9					
C10410	Structure (Raft Foundation)	25	25	0%	08-Aug-16	05-Sep-16	9					
<b>Facade Envelop Structure Installation</b>												
D10410	Shop Drawing Submission and Approval	30	30	0%	17-Aug-16	21-Sep-16	32					
<b>106 C&amp;ED Detention Area Guard Booth</b>												
A10600	Excavation + Blinding	5	5	0%	02-Aug-16	06-Aug-16	14					
A10610	Structure (Raft Foundation)	20	20	0%	08-Aug-16	30-Aug-16	14					
<b>107 C&amp;ED Mobile X-ray Operation Office, Portion N</b>												
A10700	Excavation + Blinding	5	5	0%	08-Aug-16	12-Aug-16	34					
<b>External Works for Portion N</b>												
<b>Drainage Works</b>												
B00150	Initial Survey	12	12	0%	02-Aug-16	15-Aug-16	-105					
SG4520	Drainage Works (3359m & 107MHs)	126	126	0%	16-Aug-16	16-Jan-17	-49					
SG4640	Sewerage (383m & 12MHs)	126	126	0%	16-Aug-16	16-Jan-17	-49					
<b>PORTION P</b>												
<b>Portion P Structure</b>												
<b>Retaining Wall RW1</b>												
S10810	Construction of Retaining Wall RW1 (U-shape, 5 bays)	100	100	0%	24-Aug-16	21-Dec-16	36					
<b>Portion P Buildings</b>												
<b>105 IMMDD Guard Booth, Portion P</b>												
A10510	Excavation + Blinding	5	5	0%	24-Aug-16	29-Aug-16	25					
<b>Facade Envelop Structure Installation</b>												
A10560	Shop Drawing Submission and Approval	30	30	0%	24-Aug-16	28-Sep-16	30					
<b>External Works for Portion P</b>												
<b>Drainage Works</b>												
B00160	Initial Survey	6	6	0%	24-Aug-16	30-Aug-16	0					
<b>Landscape Works</b>												
A5170	Design and Procurement for Irrigation System	274	274	0%	19-Jun-16	19-Mar-17	0					

- Actual Work
- Remaining Work
- Critical
- ◆ Milestone

**THREE MONTH ROLLING PROGRAMME  
VEHICLE CLEARANCE PLAZAS AND ANCILLARY BUILDINGS AND FACILITIES**

Date	Revision	Checked	Approved
31-Mar-16	3MRP updated as of 31 Mar. 2016	ZJ	
30-Apr-16	3MRP updated as of 30 Apr. 2016	ZJ	
31-May-16	3MRP updated as of 31 May 2016		

## **MATERIALAB CONSULTANTS LIMITED**

Room 723 & 725, 7/F, Block B,  
Profit Industrial Building,  
1-15 Kwai Fung Crescent, Kwai Fong,  
Hong Kong.

Tel : (852)-24508238  
Fax : (852)-24508032  
Email : mcl@fugro.com



Report No.: 0165/15/ED/0452

---

### **Appendix D**

#### **Event / Action Plan**

**Appendix D –**

**Event / Action Plan for Air Quality and Noise Monitoring**

Event / Action Plan for Air Quality

Event	Action			
	ET	IEC	ER	Contractor
<b>Action Level</b>				
1. Exceedance for one sample	1. Identify source, investigate the causes of exceedance and propose remedial measures;  2. Inform IEC and ER;  3. Repeat measurement to confirm finding;  4. Increase monitoring frequency to daily.	1. Check monitoring data submitted by ET;  2. Check Contractor's working method.	1. Notify Contractor.	1. Rectify any unacceptable practice;  2. Amend working methods if appropriate.

Event	Action			
	ET	IEC	ER	Contractor
2. Exceedance for two or more consecutive samples	<ol style="list-style-type: none"> <li>1. Identify source;</li> <li>2. Inform IEC and ER;</li> <li>3. Advise the ER on the effectiveness of the proposed remedial measures;</li> <li>4. Repeat measurements to confirm findings;</li> <li>5. Increase monitoring frequency to daily;</li> <li>6. Discuss with IEC and Contractor on remedial actions required;</li> <li>7. If exceedance continues, arrange meeting with IEC and ER;</li> <li>8. If exceedance stops, cease additional monitoring.</li> </ol>	<ol style="list-style-type: none"> <li>1. Check monitoring data submitted by ET;</li> <li>2. Check Contractor's working method;</li> <li>3. Discuss with ET and Contractor on possible remedial measures;</li> <li>4. Advise the ER on the effectiveness of the proposed remedial measures;</li> <li>5. Supervise Implementation of remedial measures.</li> </ol>	<ol style="list-style-type: none"> <li>1. Confirm receipt of notification of failure in writing;</li> <li>2. Notify Contractor;</li> <li>3. Ensure remedial measures properly implemented.</li> </ol>	<ol style="list-style-type: none"> <li>1. Submit proposals for remedial to ER within 3 working days of notification;</li> <li>2. Implement the agreed proposals;</li> <li>3. Amend proposal if appropriate.</li> </ol>



Event	Action			
	ET	IEC	ER	Contractor
<b>Limit Level</b>				
1. Exceedance for one sample	1. Identify source, investigate the causes of exceedance and propose remedial measures; 2. Inform ER, Contractor and EPD; 3. Repeat measurement to confirm finding; 4. Increase monitoring frequency to daily; 5. Assess effectiveness of Contractor's remedial actions and keep IEC, EPD and ER informed of the results.	1. Check monitoring data submitted by ET; 2. Check Contractor's working method; 3. Discuss with ET and Contractor on possible remedial measures; 4. Advise the ER on the effectiveness of the proposed remedial measures; 5. Supervise implementation of remedial measures.	1. Confirm receipt of notification of failure in writing; 2. Notify Contractor; 3. Ensure remedial measures properly implemented.	1. Take immediate action to avoid further exceedance; 2. Submit proposals for remedial actions to IEC within 3 working days of notification; 3. Implement the agreed proposals; 4. Amend proposal if appropriate.

Event	Action			
	ET	IEC	ER	Contractor
2. Exceedance for two or more consecutive samples	<ol style="list-style-type: none"> <li>1. Notify IEC, ER, Contractor and EPD;</li> <li>2. Identify source;</li> <li>3. Repeat measurement to confirm findings;</li> <li>4. Increase monitoring frequency to daily;</li> <li>5. Carry out analysis of Contractor's working procedures to determine possible mitigation to be implemented;</li> <li>6. Arrange meeting with IEC and ER to discuss the remedial actions to be taken;</li> <li>7. Assess effectiveness of Contractor's remedial actions and keep IEC, EPD and ER informed of the results;</li> <li>8. If exceedance stops, cease additional monitoring.</li> </ol>	<ol style="list-style-type: none"> <li>1. Discuss amongst ER, ET, and Contractor on the potential remedial actions;</li> <li>2. Review Contractor's remedial actions whenever necessary to assure their effectiveness and advise the ER accordingly;</li> <li>3. Supervise the implementation of remedial measures.</li> </ol>	<ol style="list-style-type: none"> <li>1. Confirm receipt of notification of failure in writing;</li> <li>2. Notify Contractor;</li> <li>3. In consultation with the IEC, agree with the Contractor on the remedial measures to be implemented;</li> <li>4. Ensure remedial measures properly implemented;</li> <li>5. If exceedance continues, consider what portion of the work is responsible and instruct the Contractor to stop that portion of work until the exceedance is abated.</li> </ol>	<ol style="list-style-type: none"> <li>1. Take immediate action to avoid further exceedance;</li> <li>2. Submit proposals for remedial actions to IEC within 3 working days of notification;</li> <li>3. Implement the agreed proposals;</li> <li>4. Resubmit proposals if problem still not under control;</li> <li>5. Stop the relevant portion of works as determined by the ER until the exceedances abated.</li> </ol>

Event / Action Plan for Construction Noise Monitoring

Event	Action			
	ET	IEC	ER	Contractor
Action Level	<ol style="list-style-type: none"> <li>1. Notify IEC and Contractor;</li> <li>2. Identify source, investigate the causes of exceedance and propose remedial measures;</li> <li>3. Report the results of investigation to the IEC, ER and Contractor;</li> <li>4. Discuss with the Contractor and formulate remedial measures;</li> <li>5. Increase monitoring frequency to check mitigation effectiveness.</li> </ol>	<ol style="list-style-type: none"> <li>1. Review the analysed results submitted by the ET;</li> <li>2. Review the proposed remedial measures by the Contractor and advise the ER accordingly;</li> <li>3. Supervise the implementation of remedial measures.</li> </ol>	<ol style="list-style-type: none"> <li>1. Confirm receipt of notification of failure in writing;</li> <li>2. Notify Contractor;</li> <li>3. Require Contractor to propose remedial measures for the analysed noise problem;</li> <li>4. Ensure remedial measures are properly implemented.</li> </ol>	<ol style="list-style-type: none"> <li>1. Submit noise mitigation proposals to IEC;</li> <li>2. Implement noise mitigation proposals.</li> </ol>

Event	Action			
	ET	IEC	ER	Contractor
Limit Level	<ol style="list-style-type: none"> <li>1. Inform IEC, ER, EPD and Contractor;</li> <li>2. Identify source;</li> <li>3. Repeat measurements to confirm findings;</li> <li>4. Increase monitoring frequency;</li> <li>5. Carry out analysis of Contractor's working procedures to determine possible mitigation to be implemented;</li> <li>6. Inform IEC, ER and EPD the causes and actions taken for the exceedances;</li> <li>7. Assess effectiveness of Contractor's remedial actions and keep IEC, EPD and ER informed of the results;</li> <li>8. If exceedance stops, cease additional monitoring.</li> </ol>	<ol style="list-style-type: none"> <li>1. Discuss amongst ER, ET, and Contractor on the potential remedial actions;</li> <li>2. Review Contractors remedial actions whenever necessary to assure their effectiveness and advise the ER accordingly;</li> <li>3. Supervise the implementation of remedial measures.</li> </ol>	<ol style="list-style-type: none"> <li>1. Confirm receipt of notification of failure in writing;</li> <li>2. Notify Contractor;</li> <li>3. Require Contractor to propose remedial measures for the analysed noise problem;</li> <li>4. Ensure remedial measures properly implemented;</li> <li>5. If exceedance continues, consider what portion of the work is responsible and instruct the Contractor to stop that portion of work until the exceedance is abated.</li> </ol>	<ol style="list-style-type: none"> <li>1. Take immediate action to avoid further exceedance;</li> <li>2. Submit proposals for remedial actions to IEC within 3 working days of notification;</li> <li>3. Implement the agreed proposals;</li> <li>4. Resubmit proposals if problem still not under control;</li> <li>5. Stop the relevant portion of works as determined by the ER until the exceedance is abated.</li> </ol>

## **MATERIALAB CONSULTANTS LIMITED**

Room 723 & 725, 7/F, Block B,  
Profit Industrial Building,  
1-15 Kwai Fung Crescent, Kwai Fong,  
Hong Kong.

Tel : (852)-24508238  
Fax : (852)-24508032  
Email : mcl@fugro.com

The logo for MaterialLab, featuring the word "MaterialLab" in a bold, sans-serif font. The text is centered between two thick, horizontal black bars.

---

Report No.: 0165/15/ED/0452

### **Appendix E**

### **Waste Flow Table**



**Monthly Summary of Waste Flow Table for 2016 (year)**

Name of Person completing the Record: Marko Chan

Month	Actual Quantities of Inert C&D Materials Generated Monthly					Actual Quantities of Non-inert C&D Wastes Generated Monthly				
	Total Quantity Generated	Broken Concrete	Reused in the Contract	Reused in other Projects	Disposed as Public Fill	Metals	Paper/ cardboard packaging	Plastics	Chemical Waste	Others, e.g. general refuse
		(see Note 1)						(see Note 2)		
	(in '000m <sup>3</sup> )	(in '000m <sup>3</sup> )	(in '000m <sup>3</sup> )	(in '000m <sup>3</sup> )	(in '000m <sup>3</sup> )	(in '000 Kg)	(in '000 Kg)	(in '000 Kg)	(in '000 Kg)	(in '000m <sup>3</sup> )
Jan	0.000	0	0	0	0.000	0	0.992	0	0	0.073
Feb	0.000	0	0	0	0.000	0	0	0	0	0.093
Mar	0.087	0	0	0	0.087	0	0.392	0	0	0.200
Apr	0.184	0	0	0	0.184	0	0.411	0	0	0.224
May	0.203	0	0	0	0.203	0	0	0	0	0.293
Jun										
Jul										
Aug										
Sept										
Oct										
Nov										
Dec										
<b>Total</b>	<b>0.474</b>	<b>0.000</b>	<b>0.000</b>	<b>0.000</b>	<b>0.474</b>	<b>0.000</b>	<b>1.795</b>	<b>0.000</b>	<b>0.000</b>	<b>0.883</b>

Notes:

(1) Broken concrete for recycling into aggregates.

(2) Plastics refer to plastic bottles/containers, plastic sheets/foam from packaging material.

## Monthly Summary of Excavated Marine Sediment for 2016 (year)

Month	Total Quantity of Excavated Marine Sediment Generated in '000m <sup>3</sup>	Reused in this contract in '000m <sup>3</sup>	Reused in other Projects in '000m <sup>3</sup>	Disposed of at CMP in '000m <sup>3</sup>
Jan	1.950	0	0	1.950
Feb	2.328	0	0	2.328
Mar	2.464	0	0	2.464
Apr	5.602	0	0	5.602
May	0	0	0	0
Jun				
Jul				
Aug				
Sep				
Oct				
Nov				
Dec				
<b>Total</b>	<b>12.344</b>	<b>0.000</b>	<b>0.000</b>	<b>12.344</b>

## **MATERIALAB CONSULTANTS LIMITED**

Room 723 & 725, 7/F, Block B,  
Profit Industrial Building,  
1-15 Kwai Fung Crescent, Kwai Fong,  
Hong Kong.

Tel : (852)-24508238  
Fax : (852)-24508032  
Email : mcl@fugro.com



Report No.: 0165/15/ED/0452

---

### **Appendix F**

#### **Environmental Licenses and Permits**





Item	Permit/Licence Registration	Permit No.	Work Area	Application Date	Issue Date	Valid Date		Status	Remark
						From	To		
14	Permit issued Under the Dumping at Sea Ordinance	EP/MD/17-007	East of Sha Chau (CMP Vd)	08-Apr-16	19-Apr-16	24-Apr-16	23-May-16	Valid until 23-May-16	
15	Permit issued Under the Dumping at Sea Ordinance	EP/MD/17-029	East of Sha Chau (CMP Vd)	06-May-16	19-May-16	24-May-16	23-Jun-16	Valid	

## **MATERIALAB CONSULTANTS LIMITED**

Room 723 & 725, 7/F, Block B,  
Profit Industrial Building,  
1-15 Kwai Fung Crescent, Kwai Fong,  
Hong Kong.

Tel : (852)-24508238  
Fax : (852)-24508032  
Email : mcl@fugro.com

The logo for MaterialLab, featuring the word "MaterialLab" in a bold, sans-serif font. The text is white and is set against a black rectangular background that has a thin white border.

Report No.: 0165/15/ED/0452

---

### **Appendix G**

#### **Implementation Schedule for Environmental Mitigation Measures (EMIS)**

## Appendix G – Implementation Schedule of Environmental Mitigation Measures (EMIS)

EIA Ref.	EM&A Log Ref.	Recommended Mitigation Measures	Location of the measures	Implementation Status
<b>Air Quality</b>				
S5.5.6.1	A1	1) The contractor shall follow the procedures and requirements given in the Air Pollution Control (Construction Dust) Regulation	All construction sites	V
S5.5.6.2	A2	2) Proper watering of exposed spoil should be undertaken throughout the construction phase: <ul style="list-style-type: none"> <li>• Any excavated or stockpile of dusty material should be covered entirely by impervious sheeting or sprayed with water to maintain the entire surface wet and then removed or backfilled or reinstated where practicable within 24 hours of the excavation or unloading;</li> <li>• Any dusty materials remaining after a stockpile is removed should be wetted with water and cleared from the surface of roads;</li> <li>• A stockpile of dusty material should not be extend beyond the pedestrian barriers, fencing or traffic cones.</li> <li>• The load of dusty materials on a vehicle leaving a construction site should be covered entirely by impervious sheeting to ensure that the dusty materials do not leak from the vehicle;</li> <li>• Where practicable, vehicle washing facilities with high pressure water jet should be provided at every discernible or designated vehicle exit point. The area where vehicle washing takes place and the road section between the washing facilities and the exit point should be paved with concrete, bituminous materials or hardcores;</li> </ul>	All construction sites	V
S5.5.6.2	A2	<ul style="list-style-type: none"> <li>• When there are open excavation and reinstatement works, hoarding of not less than 2.4m high should be provided as far as practicable along the site boundary with provision for public crossing. Good site practice shall also be adopted by the Contractor to ensure the conditions of the hoardings are properly maintained throughout the construction period;</li> <li>• The portion of any road leading only to construction site that is within 30m of a vehicle entrance or exit should be kept clear of dusty materials,</li> <li>• Surfaces where any pneumatic or power-driven drilling, cutting, polishing or other mechanical breaking operation takes place should be sprayed with water or a dust suppression chemical continuously;</li> <li>• Any area that involves demolition activities should be sprayed with water or a dust suppression chemical immediately prior to, during and immediately after the activities so as to maintain the entire surface wet;</li> <li>• Where a scaffolding is erected around the perimeter of a building under construction, effective dust screens, sheeting or netting should be provided to enclose the scaffolding from the ground floor level of the building, or a canopy should be provided from the first floor level up to the highest level of the scaffolding;</li> <li>• Any skip hoist for material transport should be totally enclosed by impervious sheeting;</li> <li>• Every stock of more than 20 bags of cement or dry pulverised fuel ash (PFA) should be covered entirely by impervious sheeting or placed in an area sheltered on the top</li> </ul>	All construction sites	V
S5.5.6.2	A2	<ul style="list-style-type: none"> <li>• Cement or dry PFA delivered in bulk should be stored in a closed silo fitted with an audible high level alarm which is interlocked with the material filling line and no overfilling is allowed;</li> <li>• Loading, unloading, transfer, handling or storage of bulk cement or dry PFA should be carried out in a totally</li> </ul>	All construction sites	N/A

EIA Ref.	EM&A Log Ref.	Recommended Mitigation Measures	Location of the measures	Implementation Status
		<p>enclosed system or facility, and any vent or exhaust should be fitted with an effective fabric filter or equivalent air pollution control system; and</p> <ul style="list-style-type: none"> <li>Exposed earth should be properly treated by compaction, turfing, hydroseeding, vegetation planting or sealing with latex, vinyl, bitumen, shotcrete or other suitable surface stabiliser within six months after the last construction activity on the construction site or part of the construction site where the exposed earth lies</li> </ul>		
S5.5.6.3	A3	3) The Contractor should undertake proper watering on all exposed spoil (with at least 8 times per day) throughout the construction phase.	All construction sites	V
S5.5.6.4	A4	4) Engineer to incorporate the controlled measures into the Particular Specification (PS) for the civil work. The PS should also draw the contractor's attention to the relevant latest Practice Notes issued by EPD.	All construction sites	V
S5.5.6.4	A5	5) Implement regular dust monitoring under EM&A programme during the construction stage.	Selected Representative dust monitoring station	V
S5.5.7.1	A6	<p>The following mitigation measures should be adopted to prevent fugitive dust emissions for concrete batching plant;</p> <ul style="list-style-type: none"> <li>Loading, unloading, handling, transfer or storage of any dusty materials should be carried out in totally enclosed system;</li> <li>All dust-laden air or waste gas generated by the process operations should be properly extracted and vented to fabric filtering system to meet the emission limits for TSP;</li> <li>Vents for all silos and cement/pulverised fuel ash (PFA) weighing scale should be fitted with fabric filtering system;</li> <li>The materials which may generate airborne dusty emissions should be wetted by water spray system;</li> <li>All receiving hoppers should be enclosed on three sides up to 3m above unloading point;</li> <li>All conveyor transfer points should be totally enclosed;</li> <li>All access and route roads within the premises should be paved and wetted; and</li> <li>Vehicle cleaning facilities should be provided and used by all concrete trucks before leaving the premises to wash off any dust on the wheels and/or body</li> </ul>	Selected Representative dust monitoring station	N/A
S5.5.2.7	A7	<p>The following mitigation measures should be adopted to prevent fugitive dust emissions at barging point:</p> <ul style="list-style-type: none"> <li>All road surface within the barging facilities will be paved;</li> <li>Dust enclosures will be provided for the loading ramp;</li> <li>Vehicles will be required to pass through designated wheels wash facilities; and</li> <li>Continuous water spray at the loading points</li> </ul>	All construction sites	V
<b>Construction Noise (Air borne)</b>				
S6.4.10	N1	<p>1) Use of good site practices to limit noise emissions by considering the following:</p> <ul style="list-style-type: none"> <li>only well-maintained plant should be operated on-site and plant should be serviced regularly during the construction programme;</li> <li>machines and plant (such as trucks, cranes) that may be in intermittent use should be shut down between work periods or should be throttled down to a minimum;</li> <li>plant known to emit noise strongly in one direction, where possible, be orientated so that the noise is directed away from nearby NSRs;</li> <li>silencers or mufflers on construction equipment should be properly fitted and maintained during the construction works;</li> </ul>	All construction sites	V

EIA Ref.	EM&A Log Ref.	Recommended Mitigation Measures	Location of the measures	Implementation Status
		<ul style="list-style-type: none"> <li>mobile plant should be sited as far away from NSRs as possible and practicable;</li> <li>material stockpiles, mobile container site office and other structures should be effectively utilised, where practicable, to screen noise from on-site construction activities.</li> </ul>		
S6.4.11	N2	2) Install temporary hoarding located on the site boundaries between noisy construction activities and NSRs. The conditions of the hoardings shall be properly maintained throughout the construction period.	All construction sites	V
S6.4.12	N3	3) Install movable noise barriers (typically density@14kg/m acoustic mat or full enclosure close to noisy plants including compressor, generators, saw.	For plant items listed in Appendix 6D of the EIA report at all construction sites	N/A
S6.4.13	N4	4) Select "Quiet plants" which comply with the BS 5228 Part 1 or TM standards.	For plant items listed in Appendix 6D of the EIA report at all construction site	V
S6.4.14	N5	5) Sequencing operation of construction plants where practicable	All construction sites where practicable	V
S5.1	N6	6) Implement a noise monitoring under EM&A programme.	Selected representative noise monitoring station	V
<b>Sediment</b>				
S7.3	S1	1) The requirements as recommended in ETWB TC 34/2002 Management of Dredged/Excavated Sediment shall be included in the Particular Specification as appropriate.	All construction sites	V
<b>Waste Management (Construction Waste)</b>				
S8.3.8	WM1	<p><u>Construction and Demolition Material</u> The following mitigation measures should be implemented in handling the waste:</p> <ul style="list-style-type: none"> <li>Maintain temporary stockpiles and reuse excavated fill material for backfilling and reinstatement;</li> <li>Carry out on-site sorting;</li> <li>Make provisions in the Contract documents to allow and promote the use of recycled aggregates where appropriate;</li> <li>Implement a trip-ticket system for each works contract to ensure that the disposal of C&amp;D materials are properly documented and verified; and</li> <li>Implement an enhanced Waste Management Plan similar to E7WBTC (Works) No. 19/2005 - "Environmental Management on Construction Sites" to encourage on-site sorting of C&amp;D materials and to minimize their generation during the course of construction.</li> <li>In addition, disposal of the C&amp;D materials onto any sensitive locations such as agricultural lands, etc. should be avoided. The Contractor shall propose the final</li> </ul>	All construction sites	V

EIA Ref.	EM&A Log Ref.	Recommended Mitigation Measures	Location of the measures	Implementation Status
		disposal sites to the Project Proponent and get its approval before implementation		
S8.3.9- S8.3.11	WM2	<p><b>C&amp;D Waste</b></p> <ul style="list-style-type: none"> <li>Standard formwork or pre-fabrication should be used as far as practicable in order to minimise the arising of C&amp;D materials. The use of more durable formwork or plastic facing for the construction works should be considered. Use of wooden hoardings should not be used, as in other projects. Metal hoarding should be used to enhance the possibility of recycling. The purchasing of construction materials will be carefully planned in order to avoid over ordering and wastage.</li> <li>The Contractor should recycle as much of the C&amp;D materials as possible on-site. Public fill and C&amp;D waste should be segregated and stored in different containers or skips to enhance reuse or recycling of materials and their proper disposal. Where practicable, concrete and masonry can be crushed and used as fill. Steel reinforcement bar can be used by scrap steel mills. Different areas of the sites should be considered for such segregation and storage.</li> </ul>	All construction sites	V
S8.2.12- S8.3.15	WM3	<p><b>Chemical Waste</b></p> <ul style="list-style-type: none"> <li>Chemical waste that is produced, as defined by Schedule 1 of the Waste Disposal (Chemical Waste) (General) Regulation, should be handled in accordance with the Code of Practice on the Packaging, Labelling and Storage of Chemical Wastes.</li> <li>Containers used for the storage of chemical wastes should be suitable for the substance they are holding, resistant to corrosion, maintained in a good condition, and securely closed; have a capacity of less than 450 liters unless the specification has been approved by the EPD; and display a label in English and Chinese in accordance with instructions prescribed in Schedule 2 of the regulation.</li> <li>The storage area for chemical wastes should be clearly labeled and used solely for the storage of chemical waste; enclosed on at least 3 sides; have an impermeable floor and bunding of sufficient capacity to accommodate 110% of the volume of the largest container or 20 % of the total volume of waste stored in that area, whichever is the greatest; have adequate ventilation; covered to prevent rainfall entering; and arranged so that incompatible materials are adequately separated.</li> <li>Disposal of chemical waste should be via a licensed waste collector; be to a facility licensed to receive chemical waste, such as the Chemical Waste Treatment Centre which also offers chemical waste collection service and can supply the necessary storage containers; or be to a reuser of the waste, under approval from the EPD.</li> </ul>	All construction sites	V
S8.3.16	WM4	<p><b>Sewage</b></p> <ul style="list-style-type: none"> <li>Adequate numbers of portable toilets should be provided for the workers. The portable toilets should be maintained in a state which will not deter the workers from utilizing these portable toilets. Night soil should be collected by licensed collectors regularly.</li> </ul>	All construction sites	V
S8.3.17	WM5	<p><b>General Refuse</b></p> <ul style="list-style-type: none"> <li>General refuse generated on-site should be stored in enclosed bins or compaction units separately from construction and chemical wastes.</li> <li>A reputable waste collector should be employed by the Contractor to remove general refuse from the site, separately from construction and chemical wastes, on a daily basis to minimize odour, pest and litter impacts. Burning of refuse on construction sites is prohibited by</li> </ul>	All construction sites	V

EIA Ref.	EM&A Log Ref.	Recommended Mitigation Measures	Location of the measures	Implementation Status
		<p>law.</p> <ul style="list-style-type: none"> <li>• Aluminium cans are often recovered from the waste stream by individual collectors if they are segregated and made easily accessible. Separate labelled bins for their deposit should be provided if feasible.</li> <li>• Office wastes can be reduced through the recycling of paper if volumes are large enough to warrant collection. Participation in a local collection scheme should be considered by the Contractor.</li> <li>• Training should be provided to workers about the concepts of site cleanliness and appropriate waste management procedure, including reduction, reuse and recycling of wastes.</li> </ul>		
<b>Water Quality ( Construction Phase)</b>				
S9.11.1.7	W2	<p><b>Land Works</b></p> <p>General construction activities on land should also be governed by standard good working practice. Specific measures to be written into the works contracts should include:</p> <ul style="list-style-type: none"> <li>• wastewater from temporary site facilities should be controlled to prevent direct discharge to surface or marine waters;</li> <li>• sewage effluent and discharges from on-site kitchen facilities shall be directed to Government sewer in accordance with the requirements of the WPCO or collected for disposal offsite. The use of soakaways shall be avoided;</li> <li>• storm drainage shall be directed to storm drains via adequately designed sand/silt removal facilities such as sand traps, silt traps and sediment basins. Channels, earth bunds or sand bag barriers should be provided on site to properly direct stormwater to such silt removal facilities. Catchpits and perimeter channels should be constructed in advance of site formation works and earthworks;</li> <li>• silt removal facilities, channels and manholes shall be maintained and any deposited silt and grit shall be removed regularly, including specifically at the onset of and after each rainstorm;</li> <li>• temporary access roads should be surfaced with crushed stone or gravel;</li> <li>• rainwater pumped out from trenches or foundation excavations should be discharged into storm drains via silt removal facilities;</li> <li>• measures should be taken to prevent the washout of construction materials, soil, silt or debris into any drainage system;</li> <li>• open stockpiles of construction materials (e.g. aggregates and sand) on site should be covered with tarpaulin or similar fabric during rainstorms;</li> <li>• manholes (including any newly constructed ones) should always be adequately covered and temporarily sealed so as to prevent silt, construction materials or debris from getting into the drainage system, and to prevent storm run-off from getting into foul sewers;</li> <li>• discharges of surface run-off into foul sewers must always be prevented in order not to unduly overload the foul sewerage system;</li> </ul>	Land-based works area	V
S9.11.1.7	W2	<ul style="list-style-type: none"> <li>• all vehicles and plant should be cleaned before they leave the construction site to ensure that no earth, mud or debris is deposited by them on roads. A wheel washing bay should be provided at every site exit;</li> <li>• wheel wash overflow shall be directed to silt removal facilities before being discharged to the storm drain;</li> <li>• the section of construction road between the wheel</li> </ul>	Land-based works area	V



EIA Ref.	EM&A Log Ref.	Recommended Mitigation Measures	Location of the measures	Implementation Status
		<p>washing bay and the public road should be surfaced with crushed stone or coarse gravel;</p> <ul style="list-style-type: none"> <li>• wastewater generated from concreting, plastering, internal decoration, cleaning work and other similar activities, shall be screened to remove large objects;</li> <li>• vehicle and plant servicing areas, vehicle wash bays and lubrication facilities shall be located under roofed areas. The drainage in these covered areas shall be connected to foul sewers via a petrol interceptor in accordance with the requirements of the WPCO or collected for off site disposal;</li> <li>• the contractors shall prepare an oil / chemical cleanup plan and ensure that leakages or spillages are contained and cleaned up immediately;</li> <li>• waste oil should be collected and stored for recycling or disposal, in accordance with the Waste Disposal Ordinance;</li> <li>• all fuel tanks and chemical storage areas should be provided with locks and be sited on sealed areas. The storage areas should be surrounded by bunds with a capacity equal to 110% of the storage capacity of the largest tank; and</li> <li>• surface run-off from bunded areas should pass through oil/grease traps prior to discharge to the stormwater system.</li> </ul>		
<b>Ecology (Construction Phase)</b>				
S10.7	E4	<ul style="list-style-type: none"> <li>• Watering to reduce dust generation; prevention of siltation of freshwater habitats; Site runoff should be desilted, to reduce the potential for suspended sediments, organics and other contaminants to enter streams and standing freshwater</li> </ul>	Land-based works areas	V
S10.7	E5	<ul style="list-style-type: none"> <li>• Good site practices, including strictly following the permitted works hours, using quieter machines where practicable, and avoiding excessive lightings during night time</li> </ul>	Land-based works areas	V
S10.7	E8	<ul style="list-style-type: none"> <li>• Control vessel speed</li> <li>• Skipper training</li> <li>• Predefined and regular routes for working vessels; avoid Brother Islands.</li> </ul>	Marine Traffic	V
<b>Fisheries</b>				
S11.7	F4	<ul style="list-style-type: none"> <li>• Maritime Oil Spill Response Plan (MOSRP);</li> <li>• Contingency plan.</li> </ul>	HKBCF	V
<b>Landscape &amp; Visual (Detailed Design Phase)</b>				
S14.3.3.1	LV1	<p>General design measures include:</p> <ul style="list-style-type: none"> <li>• Roadside planting and planting along the edge of the HKBCF Island is proposed;</li> <li>• Transplanting of mature trees in good health and amenity value where appropriate and reinstatement of areas disturbed during construction by compensatory hydro-seeding and planting;</li> <li>• Protection measures for the trees to be retained during construction activities;</li> <li>• Optimizing the sizes and spacing of the bridge columns;</li> <li>• Fine-tuning the location of the bridge columns to avoid visually-sensitive locations;</li> <li>• Providing planting area around peripheral of HKBCF for tree planting screening effect;</li> <li>• Providing salt-tolerant native trees along the planter strip at affected seawall and newly reclaimed coastline;</li> <li>• For HKBCF, providing aesthetic architectural design on the related buildings (e.g. similar materials for PCB building facade to Airport buildings, roof planting and subtle materials for other facilities buildings and so on), and the related infrastructure (e.g. parapet planting and</li> </ul>	HKBCF	V

EIA Ref.	EM&A Log Ref.	Recommended Mitigation Measures	Location of the measures	Implementation Status
		transparent cover for elevated footbridges) to provide harmonious atmosphere of the HKBCF; and <ul style="list-style-type: none"> <li>• Fine-tuning the sizes of the structural members to minimize the bulkiness of buildings and adjustment of building arrangement to minimise disturbance to surrounding vegetation in the HKBCF.</li> </ul>		
<b>Landscape &amp; Visual (Construction Phase)</b>				
S14.3.3.3	LV2	Mitigate both Landscape and Visual Impacts G1. Grass-hydroseed bare soil surface and stock pile areas. G2. Add planting strip and automatic irrigation system if appropriate at some portions of bridge footbridge to screen bridge and traffic. G3. Not applicable as this is for HKLR. G4. For HKBCF, providing aesthetic architectural design on the related buildings (e.g. similar materials for PCB building facade to Airport buildings, roof planting and subtle materials for other facilities buildings and so on), and the related infrastructure (e.g. parapet planting and transparent cover for elevated footbridges) to provide harmonious atmosphere of the HKBCF G5. Vegetation reinstatement and upgrading to disturbed areas G6. Maximizing new tree shrub and other vegetation planting to compensate tree felled and vegetation removed G7. Providing planting area around peripheral of HKBCF for tree planting screening effect; G8. Plant salt-tolerant native and shrubs etc along the planter strip at affected seawall. G9. Reserve of loose natural granite rocks for re-use, Provide new coastline to adopt "natural-look" by means of using armour rocks in the form of natural rock materials and planting strip area accommodating screen buffer to enhance "natural-look" of the new coastline.	HKBCF	N/A
S14.3.3.3	LV3	<u>Mitigate Visual Impacts</u> V1. Minimize time for construction activities during construction period. V2. Provide screen hoarding at the portion of the project site / works areas / storage areas near VSRs who have close low-level views to the Project during HKBCF construction.	HKBCF	N/A
<b>EM&amp;A</b>				
S15.2.2	EM1	An Independent Environmental Checker needs to be employed as per the EM&A Manual	All construction sites	V
S15.5 – S15.6	EM2	1) An Environmental Team needs to be employed as per the EM&A Manual. 2) Prepare a systematic Environmental Management Plan to ensure effective implementation of the mitigation measures. 3) An environmental impact monitoring needs to be implementing by the Environmental Team to ensure all the requirements given in the EM&A Manual are fully complied with.	All construction sites	V

Legend: V = implemented;

x = not implemented;

N/A = not applicable

## **MATERIALAB CONSULTANTS LIMITED**

Room 723 & 725, 7/F, Block B,  
Profit Industrial Building,  
1-15 Kwai Fung Crescent, Kwai Fong,  
Hong Kong.

Tel : (852)-24508238  
Fax : (852)-24508032  
Email : mcl@fugro.com

The logo for MaterialLab, featuring the word "MaterialLab" in a bold, sans-serif font. The text is white and is set against a black rectangular background that has a thin white border.

Report No.: 0165/15/ED/0452

---

### **Appendix H**

#### **Statistics on Environmental Complaints, Notification of Summons and Successful Prosecutions**

## MATERIALAB CONSULTANTS LIMITED

Room 723 & 725, 7/F, Block B,  
Profit Industrial Building,  
1-15 Kwai Fung Crescent, Kwai Fong,  
Hong Kong.

Tel : (852)-24508238  
Fax : (852)-24508032  
Email : mcl@fugro.com

The logo for MaterialLab, featuring the word "MaterialLab" in a bold, sans-serif font. The text is white and is set against a black rectangular background with horizontal lines above and below the text.

Report No.: 0165/15/ED/0452

### Appendix H –

#### Statistics on Environmental Complaints, Notifications of Summons and Successful Prosecutions

Reporting Period	Cumulative Statistics		
	Complaints	Notifications of Summons	Successful Prosecutions
This reporting period	0	0	0
From commencement date of construction to end of reporting month	1	0	0

## **MATERIALAB CONSULTANTS LIMITED**

Room 723 & 725, 7/F, Block B,  
Profit Industrial Building,  
1-15 Kwai Fung Crescent, Kwai Fong,  
Hong Kong.

Tel : (852)-24508238  
Fax : (852)-24508032  
Email : mcl@fugro.com



Report No.: 0165/15/ED/0452

---

### **Appendix I**

### **Environmental Site Inspection Schedule**

**MATERIALAB CONSULTANTS LIMITED**

Room 723 & 725, 7/F, Block B,  
 Profit Industrial Building,  
 1-15 Kwai Fung Crescent, Kwai Fong,  
 Hong Kong.

Tel : (852)-24508238  
 Fax : (852)-24508032  
 Email : mcl@fugro.com

**MaterialLab**

Report No.: 0165/15/ED/0452

**Contract No. HY/2013/03**  
**HZMB HKBCF – Vehicle Clearance Plazas and Ancillary Buildings and Facilities**  
**Weekly Environmental Site Inspection Schedule**

**Environmental Site Inspection Schedule for May 2016**

May-2016						
Sun	Mon	Tue	Wed	Thu	Fri	Sat
1	2 Public Holiday	3	4	5	6 Environmental Site Inspection	7
8	9	10	11	12	13 Environmental Site Inspection	14 Public Holiday
15	16	17	18	19	20 Environmental Site Inspection	21
22	23	24	25	26	27 Environmental Site Inspection	28
29	30	31				

**Tentative Environmental Site Inspection Schedule for June 2016**

Jun-2016						
Sun	Mon	Tue	Wed	Thu	Fri	Sat
			1	2	3 Environmental Site Inspection	4
5	6	7	8	9 Public Holiday	10 Environmental Site Inspection	11
12	13	14	15	16	17 Environmental Site Inspection	18
19	20	21	22	23	24 Environmental Site Inspection	25
26	27	28	29	30		