



中國港灣工程有限責任公司

香港代表： 振華工程有限公司

CHINA HARBOUR ENGINEERING COMPANY LIMITED
HONG KONG REPRESENTATIVE: ZHEN HUA ENGINEERING CO., LTD.

Date : 28 February 2019
Our Ref. : CHEC300/OUT/2019/02/01.01/046124

By Hand

AECOM Asia Company Limited
8/F Grand Central Plaza
Tower 2, 138 Shatin Rural Committee Road
Shatin, Hong Kong.

Attn.: Mr. Jason Yu
The Engineer's Representative

Dear Sir,

Contract No. HY/2013/03
Hong Kong – Zhuhai – Macao Bridge Hong Kong Boundary Crossing Facilities
Vehicle Clearance Plazas and Ancillary Buildings and Facilities
EP Condition 5.4 – Monthly EM&A Report (January 2019)

Pursuant to the Condition 5.4 of the EP-353/2009/K, we are pleased to submit one soft copy and three hard copies of the certified Monthly EM&A Report for January 2019 for your on-ward submission.

Thank you for your kind attention.

Yours faithfully,
For and on behalf of
China Harbour Engineering Co. Ltd.


Johnson Ko
Project Manager

JK/MC/kt

Encl.

28 February 2019

By Fax (3468 2076) and By Post

AECOM Asia Co. Ltd.
The PRE's Office
550 Cheung Tung Road, Lantau
Hong Kong

Attention: Mr. Jason Yu

Dear Sir,

**Re: Agreement No. CE 48/2011 (EP)
Environmental Project Office for the
HZMB Hong Kong Link Road, HZMB Hong Kong Boundary Crossing Facilities,
and Tuen Mun-Chek Lap Kok Link – Investigation**

**Contract No. HY/2013/03 – HZMB HKBCF – Vehicle Clearance Plazas and
Ancillary Buildings and Facilities
Monthly EM&A Report for January 2019**

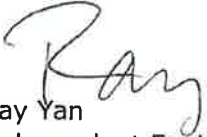
Reference is made to the Environmental Team (ET)'s submission of Monthly EM&A Report for January 2019 certified by the ET Leader (ET's ref.: "MCL/ED/0093/2019/C" dated 27 February 2019) and provided to us via e-mail on 28 February 2019.

We write to verify the captioned submission in accordance with Condition 5.4 of the Environmental Permit No. EP-353/2009/K.

The ET Leader is reminded that it is the ET's responsibility to ensure the report be timely submitted to the Director of Environmental Protection as per Condition 5.4 of EP-353/2009/K.

Thank you very much for your attention and please feel free to contact the undersigned should you require further information.

Yours faithfully,
For and on behalf of
Ramboll Hong Kong Limited


Ray Yan
Independent Environmental Checker

c.c.	HyD	Mr. Tony Pang	(By Fax: 3188 6614)
	HyD	Mr. Ken Woo	(By Fax: 3188 6614)
	MCL	Mr. Arthur Cheng	(By Fax: 2450 8032)
	CHEC	Mr. Johnason Ko	(By Fax: 2597 3368)

Internal: DY, YH, DF, HW, ENPO Site



MATERIALAB CONSULTANTS LIMITED

Room 723 & 725, 7/F, Block B,
Profit Industrial Building,
1-15 Kwai Fung Crescent, Kwai Fong,
Hong Kong
Tel : +852 2450 8238
Fax : +852 2450 8032
E-mail : mcl@fugro.com
Website : www.fugro.com

Date 27 February 2019

Our Ref. MCL/ED/0093/2019/C

Ramboll Hong Kong Limited
(formerly Ramboll Environ Hong Kong Limited)
21/F, BEA Harbour View Centre
56 Gloucester Road, Wan Chai
Hong Kong

BY HAND

Attn.: Mr. Ray Yan, IEC

Dear Sir,

**EP Condition 5.4 – Monthly EM&A Report for
Hong Kong-Zhuhai-Macao Bridge Hong Kong Boundary Crossing Facilities –
Vehicle Clearance Plazas and Ancillary Buildings and Facilities (Contract No. HY/2013/03)**

Pursuant to Condition 5.4 of the Environmental Permit (EP-353/2009/K) for the captioned project, we are pleased to submit the certified Monthly EM&A Report for January 2019 for your verification.

Should you require further information, please do not hesitate to contact our Mr. Vincent Lu at 3565 4158 or the undersigned at 3565 4115.

Yours faithfully,
for and on behalf of
MATERIALAB CONSULTANTS LIMITED

Arthur Cheng
Environmental Team Leader

AC/vl

c.c. AECOM – Mr. P.K. Lee, Mr. C.Y. Yu
RAMBOLL ENVIRON – Mr. Harris Wong
CHEC – Mr. Marko Chan

MATERIALAB CONSULTANTS LIMITED

Room 723 & 725, 7/F, Block B,
Profit Industrial Building,
1-15 Kwai Fung Crescent, Kwai Fong,
Hong Kong.

Tel : (852)-24508238
Fax : (852)-24508032
Email : mcl@fugro.com

Materialab

Report No.: 0165/15/ED/1156

**MONTHLY ENVIRONMENTAL MONITORING & AUDIT
REPORT**

January 2019

Client: China Harbour Engineering Co., Ltd.

Project: Contract No. HY/2013/03
Hong Kong-Zhuhai-Macao Bridge
Hong Kong Boundary Crossing Facilities -
Vehicle Clearance Plazas and
Ancillary Buildings and Facilities

Report No.: 0165/15/ED/1156

Prepared by: Vincent Lu

Certified by:



Arthur Cheng
Environmental Team Leader

MATERIALAB CONSULTANTS LIMITED

Room 723 & 725, 7/F, Block B,
Profit Industrial Building,
1-15 Kwai Fung Crescent, Kwai Fong,
Hong Kong.

Tel : (852)-24508238
Fax : (852)-24508032
Email : mcl@fugro.com

The logo for MaterialLab, featuring the word "MaterialLab" in a bold, sans-serif font. The text is white and is set against a dark, rectangular background that has a slight gradient and a thin white border.

Report No.: 0165/15/ED/1156

CONTENTS

EXECUTIVE SUMMARY

1. INTRODUCTION
 - 1.1 Background
 - 1.2 Project Description
 - 1.3 Project Organisation
 - 1.4 Construction Programme
 - 1.5 Construction Works undertaken during the Reporting Period
2. AIR QUALITY MONITORING
 - 2.1 Monitoring Locations
 - 2.2 Monitoring Requirements
 - 2.3 Monitoring Results
3. NOISE MONITORING
 - 3.1 Monitoring Locations
 - 3.2 Monitoring Requirements
 - 3.3 Monitoring Results
4. WATER QUALITY MONITORING
 - 4.1 Monitoring Locations
 - 4.2 Monitoring Requirements
 - 4.3 Monitoring Results
5. ECOLOGY MONITORING
 - 5.1 Monitoring Locations
 - 5.2 Monitoring Requirements
 - 5.3 Monitoring Results
6. DISPOSAL OF MARINE SEDIMENT EXTRACTED FROM BORED PILING WORKS
 - 6.1 Background
 - 6.2 Dumping Arrangements
 - 6.3 Quantity Disposed
7. ENVIRONMENTAL SITE INSPECTION AND AUDIT
 - 7.1 Site Inspection
 - 7.2 Advice on the Solid and Liquid Waste Management Status
 - 7.3 Environmental Licenses and Permits
 - 7.4 Implementation Status of Environmental Mitigation Measures
 - 7.5 Summary of Exceedance of the Environmental Quality Performance Limit

MATERIALAB CONSULTANTS LIMITED

Room 723 & 725, 7/F, Block B,
Profit Industrial Building,
1-15 Kwai Fung Crescent, Kwai Fong,
Hong Kong.

Tel : (852)-24508238
Fax : (852)-24508032
Email : mcl@fugro.com

The logo for MaterialLab, featuring the word "MaterialLab" in a bold, sans-serif font. The text is white and set against a black rectangular background with horizontal lines above and below it.

Report No.: 0165/15/ED/1156

7.6 Summary of Complaints, Notification of Summons and Successful Prosecution

8. FUTURE KEY ISSUES

8.1 Construction Programme for the Coming Months

8.2 Environmental Site Inspection Schedule for the Coming Month

9. CONCLUSIONS

APPENDICES

A Location of Works Areas

B Project Organization for Environmental Works

C Event / Action Plan

D Waste Flow Table

E Environmental Licenses and Permits

F Implementation Schedule for Environmental Mitigation Measures (EMIS)

G Statistics on Environmental Complaints, Notification of Summons and Successful Prosecutions

FIGURES

Figure 1 Air Quality Monitoring Stations

Figure 2 Noise Monitoring Stations

Figure 3 Water Quality Monitoring Stations

Figure 4 Ecological Monitoring Transect Line and Layout Map

MATERIALAB CONSULTANTS LIMITED

Room 723 & 725, 7/F, Block B,
Profit Industrial Building,
1-15 Kwai Fung Crescent, Kwai Fong,
Hong Kong.

Tel : (852)-24508238
Fax : (852)-24508032
Email : mcl@fugro.com

The logo for MaterialLab, featuring the word "MaterialLab" in a bold, sans-serif font. The text is white and is set against a dark, rectangular background that has a slight gradient and a thin white border.

Report No.: 0165/15/ED/1156

EXECUTIVE SUMMARY

This Monthly Environmental Monitoring and Audit (EM&A) Report is prepared for Contract No. HY/2013/03 "Hong Kong-Zhuhai-Macao Bridge Hong Kong Boundary Crossing Facilities – Vehicle Clearance Plazas and Ancillary Buildings and Facilities" (includes the construction works of Contract No. HY/2013/06 "Hong Kong-Zhuhai-Macao Bridge Hong Kong Boundary Crossing Facilities – Automatic Vehicle Clearance Support System" within Contract No. HY/2013/03 works area) (hereafter referred to as "the Contract") for the Highways Department of Hong Kong Special Administrative Region (HKSAR). Contract No. HY/2013/03 was awarded to China Harbour Engineering Co. Limited (construction works of Contract No. HY/2013/06 was awarded to ATAL Technologies Limited within Contract No. HY/2013/03 works area) (hereafter referred to as "the Contractor") and MaterialLab Consultants Limited (MCL) was appointed as the Environmental Team (ET) by the Contractor.

Contract No. HY/2013/03 (includes the construction works of Contract No. HY/2013/06 within Contract No. HY/2013/03 works area) is part of the "Hong Kong-Zhuhai-Macao Bridge Hong Kong Boundary Crossing Facilities" (HZMB HKBCF) Project which is a "Designated Project" under Schedule 2 of the Environmental Impact Assessment (EIA) Ordinance (Cap. 499) and for which an EIA Report (Register No. AEIAR-145/2009) was prepared and approved. The current Environmental Permit (EP) for HKBCF, namely No. EP-353/2009/K, was issued on 11 April 2016. These documents are available through the EIA Ordinance Register.

Commencement of Contract No. HY/2013/03 took place on 10 April 2015 while the construction works and the EM&A programme of Contract No. HY/2013/03 commenced on 29 August 2015 (commencement of Contract No. HY/2013/06 took place on 14 August 2015 while the construction works and the EM&A programme of Contract No. HY/2013/06 within Contract No. HY/2013/03 works area commenced on 13 September 2016).

MaterialLab Consultants Limited (MCL) has been appointed by the Contractor to implement the Environmental Monitoring & Audit (EM&A) programme for the Contract in accordance with the Updated EM&A Manual for HKBCF (Version 1.0) and will be providing environmental team services for the Contract.

This is the 41st Monthly EM&A Report for the Contract which summaries findings of the EM&A programme during the reporting period from 1 January 2019 to 31 January 2019 (includes the findings of the EM&A programme of Contract No. HY/2013/06 within Contract No. HY/2013/03 works area during the reporting period from 1 January 2019 to 31 January 2019) (the "reporting period"). The monthly EM&A programme was undertaken in accordance with the Updated EM&A Manual for HKBCF (Version 1.0). It should be noted that the air quality and noise monitoring works for the Contract are covered by Contract No. HY/2013/04 "Hong Kong-Zhuhai-Macao Bridge HKBCF – Infrastructure Works Stage II (Southern Portion)" and Contract No. HY/2011/03 "Hong Kong-Zhuhai-Macao Bridge Hong Kong Link Road – Section between Scenic Hill and HKBCF". The ET of the Contract or another ET of the HZMB project is required to conduct impact air quality monitoring at AMS2, AMS3C, AMS6 and AMS7B, noise monitoring at NMS2 and NMS3C, water quality monitoring at the locations shown in **Figure 3** and ecological monitoring as shown in **Figure 4** as part of EM&A programme if these monitoring stations are no longer covered under Contract No. HY/2013/04 and HY/2011/03. However, this is subject to ENPO's final decision on which ET should carry out the monitoring work at these stations.

As all the sections under Contract No. HY/2013/03 and HY/2013/06 were handed over to the relevant authorities on 24 October 2018 and the site had been changed to a closed area, no site inspection was conducted.

MATERIALAB CONSULTANTS LIMITED

Room 723 & 725, 7/F, Block B,
Profit Industrial Building,
1-15 Kwai Fung Crescent, Kwai Fong,
Hong Kong.

Tel : (852)-24508238
Fax : (852)-24508032
Email : mcl@fugro.com



Report No.: 0165/15/ED/1156

Breaches of Action and Limit Levels

Summary of Action and Limit Level exceedance of 1-hr TSP level and 24-hr TSP level at AMS6 shall be referred to the monthly EM&A report prepared by Contract No. HY/2011/03.

There was no Action and Limit Level exceedance recorded on other monitoring dates at station AMS2, AMS3C and AMS7B by the Environmental Team of Contract No. HY/2013/04 during the reporting period.

There was no Action and Limit Level exceedance for noise recorded at station NMS2 and station NMS3C by the Environmental Team of Contract No. HY/2013/04 during the reporting period.

There was no Action and Limit Level exceedance for water quality recorded at the monitoring stations shown as shown at **Table 4.1** by the Environmental Team of Contract No. HY/2013/04 during the reporting period.

Ecological monitoring results at all transects are reported in the EM&A report prepared by Contract No. HY/2013/04.

Complaint Log

There was no complaint received in relation to the environmental impact during the reporting period.

Notifications of Summons and Successful Prosecutions

There was no notifications of summons or prosecutions received during this reporting period.

Reporting Changes

There was no reporting change during the reporting period.

Future Key Issues

The future key issues to be undertaken in the upcoming month are:

For Contract No. HY/2013/03

1. Maintenance Works at All Site Area;

For Contract No. HY/2013/06 within Contract No. HY/2013/03 works area

1. Maintenance Works at Vehicle Kiosk & Building 037

MATERIALAB CONSULTANTS LIMITED

Room 723 & 725, 7/F, Block B,
Profit Industrial Building,
1-15 Kwai Fung Crescent, Kwai Fong,
Hong Kong.

Tel : (852)-24508238
Fax : (852)-24508032
Email : mcl@fugro.com

The logo for MaterialLab, featuring the word "MaterialLab" in a bold, sans-serif font. The text is white and set against a dark, rectangular background with a thin white border.

Report No.: 0165/15/ED/1156

1. INTRODUCTION

1.1 Background

- 1.1.1 MaterialLab Consultants Limited was commissioned by China Harbour Engineering Co. Limited (also referred to as "the Contractor") to undertake the Environmental Team (ET) services (including environmental monitoring and audit (EM&A)) for Contract No. HY/2013/03 "Hong Kong-Zhuhai-Macao Bridge Hong Kong Boundary Crossing Facilities – Vehicle Clearance Plazas and Ancillary Buildings and Facilities" (includes the construction works of Contract No. HY/2013/06 "Hong Kong-Zhuhai-Macao Bridge Hong Kong Boundary Crossing Facilities – Automatic Vehicle Clearance Support System" within Contract No. HY/2013/03 works area) ("the Contract") for the Highways Department of Hong Kong Special Administrative Region (HKSAR).
- 1.1.2 Contract No. HY/2013/03 (includes the construction works of Contract No. HY/2013/06 within Contract No. HY/2013/03 works area) is part of Hong Kong–Zhuhai–Macao Bridge Hong Kong Boundary Crossing Facilities (HKBCF) which is "Designated Projects", under Schedule 2 of the Environmental Impact Assessment Ordinance (EIAO) (Cap 499) and for which an EIA Report (Register No. AEIAR-145-2009) was prepared and approved. The current Environmental Permit (EP) for HKBCF, namely No. EP- 353/2009/K, was issued on 11 April 2016. These documents are available through the EIA Ordinance. The general layout of the Project area is shown in **Appendix A**.
- 1.1.3 This is the forty-first EM&A report to document the findings of site inspection activities and EM&A programme carried out by the Contractor of Contract No. HY/2013/03 (includes the construction works of Contract No. HY/2013/06 within Contract No. HY/2013/03 works area) from 1 January 2019 to 31 January 2019 (reporting period) under Contract No. HY/2013/03 (from 1 January 2019 to 31 January 2019 for the construction works of Contract No. HY/2013/06 within Contract No. HY/2013/03 works area) and is submitted to fulfil Condition 5.4 of the EP.

1.2 Project Description

- 1.2.1 The works to be executed under Contract No. HY/2013/03 include the following major items:
- Cargo clearance facilities including kiosks for clearance of good vehicles, customs inspection platforms, X-ray building, etc.;
 - Passenger related facilities including processing kiosks and examination facilities for private cars and coaches, annexure for examination of accompanying passengers of private cars, etc.;
 - Accommodation/offices for the facilities (like fire station, police station, buildings for Immigration Department [ImmD], Hong Kong Customs and Excise Department [C&ED], Agriculture, Fisheries and Conservation Department [AFCD], Food and Environmental Hygiene Department [FEHD], Department of Health [DofH] etc.) of the Government departments providing services in connection with the HKBCF;
 - Provision of transport and miscellaneous facilities inside the HKBCF including public transport interchange (PTI), transport drop-off and pick-up areas, vehicle holding areas, passenger queuing areas, road networks, footbridges, fencing, sewerage and drainage

MATERIALAB CONSULTANTS LIMITED

Room 723 & 725, 7/F, Block B,
Profit Industrial Building,
1-15 Kwai Fung Crescent, Kwai Fong,
Hong Kong.

Tel : (852)-24508238
Fax : (852)-24508032
Email : mcl@fugro.com



Report No.: 0165/15/ED/1156

systems, sewage treatment plant and treated effluent disposal facilities, water supply system, building services works, electronic system, and traffic control and information system including traffic control and surveillance system (TCSS), etc.;

- e. Provision of roads connecting the BCF to the Hong Kong Link Road (HKLR), the Tuen Mun – Chek Lap Kok Link (TM-CLKL) and the Hong Kong International Airport (HKIA), expect the part of road works in HKIA entrusted to the HKLR project; and
- f. Reprovisioning of the affected HKIA's facilities, expect those affected by the Automated People Mover (APM) system such as the existing east rescue berth.

1.2.2 The works to be executed under Contract No. HY/2013/06 within Contract No. HY/2013/03 works area include the following major items:

- a. The Automatic Vehicle Clearance Support System amid to increasing traffic flow for Hong Kong-Zhuhai-Macao Bridge Hong Kong Boundary Crossing Facilities;
- b. Responsible for designs and develops a set of tailor-made computer monitoring and control systems to for daily security operation; and
- c. The Clearance Workstations at 72 vehicle clearance kiosks, Customs and Excise's inbound and outbound traffic control centers as well as a Vehicle Tracking System.

1.3 Project Organisation

1.3.1 The Project Organisation for Environmental Works of Contract No. HY/2013/03 is shown in **Appendix B**. The contact person and telephone numbers of key personnel for the captioned project are shown in **Table 1.1**:

Table 1.1 Contact Persons and Telephone Numbers of Key Personnel (for Contract No. HY/2013/03)

Party	Position	Contact Person	Telephone No.	Fax No.
Engineer or Engineer's Representative (AECOM Asia Co. Ltd.)	Chief Resident Engineer	Mr. Jason C. Y. Yu	3152 5102	3902 8800
Environmental Project Office / Independent Environmental Checker (Ramboll Hong Kong Limited)	Environmental Project Office Leader	Mr. Y. H. Hui	3547 2133	3465 2899
	Independent Environmental Checker (IEC)	Mr. Ray Yan	3465 2836	3465 2899
	Environmental Site Supervisor	Mr. Harris Wong	5181 8709	3465 2899
Contractor (China Harbour Engineering Co. Ltd)	Site Agent	Mr. Paul Pui	9125 0700	2512 0427
	Environmental Officer	Mr. Marko Chan	9427 2879	2512 0427
Environmental Team (Materialab Consultants Limited)	Environmental Team Leader (ETL)	Mr. Arthur Cheng	3565 4115	2450 8032
24-hr Complaint Hotline	--	--	5236 7111	--

MATERIALAB CONSULTANTS LIMITED

Room 723 & 725, 7/F, Block B,
Profit Industrial Building,
1-15 Kwai Fung Crescent, Kwai Fong,
Hong Kong.

Tel : (852)-24508238
Fax : (852)-24508032
Email : mcl@fugro.com



Report No.: 0165/15/ED/1156

- 1.3.2 The Project Organisation for Environmental Works of Contract No. HY/2013/06 within Contract No. HY/2013/03 works area is shown in **Appendix B**. The contact person and telephone numbers of key personnel for the captioned project are shown in **Table 1.2**:

Table 1.2 Contact Persons and Telephone Numbers of Key Personnel (for Contract No. HY/2013/06 within Contract No. HY/2013/03 works area)

Party	Position	Contact Person	Telephone No.	Fax No.
Engineer or Engineer's Representative (AECOM Asia Co. Ltd.)	Chief Resident Engineer	Mr. Jason C. Y. Yu	3152 5102	3902 8800
Environmental Project Office / Independent Environmental Checker (Ramboll Hong Kong Limited)	Environmental Project Office Leader	Mr. Y. H. Hui	3547 2133	3465 2899
	Independent Environmental Checker (IEC)	Mr. Ray Yan	3465 2836	3465 2899
	Environmental Site Supervisor	Mr. Harris Wong	5181 8709	3465 2899
Contractor (ATAL Technologies Limited)	Site Agent	Mr. Eric Yim	2565 3355	3162 5217
	Environmental Officer	Mr. W. Li	2565 3137	3162 5217
Environmental Team (MaterialLab Consultants Limited)	Environmental Team Leader (ETL)	Mr. Arthur Cheng	3565 4115	2450 8032
24-hr Complaint Hotline	--	--	6509 0375	--

- 1.3.3 The Contract HY/2013/03 has commenced on 10 April 2015. The commencement of construction works and the EM&A programme have commenced on 29 August 2015.
- 1.3.4 The Contract HY/2013/06 has commenced on 14 August 2015. The commencement of construction works and the EM&A programme have commenced on 13 September 2016 within Contract No. HY/2013/03 works area.

1.4 Construction Programme

- 1.4.1 As all the sections under Contract No. HY/2013/03 and HY/2013/06 were handed over to the relevant authorities on 24 October 2018 and the site had been changed to a closed area, no construction programme will be provided.

1.5 Construction Works Undertaken during the Reporting Period

- 1.5.1 The construction works of Contract No. HY/2013/03 commenced on 29 August 2015 (includes the construction works of Contract No. HY/2013/06 commenced on 13 September 2016 within Contract No. HY/2013/03 works area). During this reporting period, the following major site activities were commenced:

For Contract No. HY/2013/03

1. Maintenance Works at All Site Area;

For Contract No. HY/2013/06 within Contract No. HY/2013/03 works area

1. Maintenance Works at Vehicle Kiosk & Building 037

MATERIALAB CONSULTANTS LIMITED

Room 723 & 725, 7/F, Block B,
Profit Industrial Building,
1-15 Kwai Fung Crescent, Kwai Fong,
Hong Kong.

Tel : (852)-24508238
Fax : (852)-24508032
Email : mcl@fugro.com



Report No.: 0165/15/ED/1156

2. AIR QUALITY MONITORING

2.1 Monitoring Locations

2.1.1 The air quality monitoring works for the Contract are covered by Contract No. HY/2013/04 "Hong Kong-Zhuhai-Macao-Bridge HKBCF – Infrastructure Works Stage II (Southern Portion)" and Contract No. HY/2011/03 "Hong Kong-Zhuhai-Macao Bridge Hong Kong Link Road – Section between Scenic Hill and HKBCF". The ET of the Contract or another ET of the HZMB project is required to conduct impact air quality monitoring at AMS2, AMS3C, AMS6 and AMS7B as part of EM&A programme if these air quality monitoring stations are no longer covered under Contract No. HY/2013/04 and HY/2011/03. **Figure 1** shows the locations of air monitoring stations.

Table 2.1 Air Quality Monitoring Location

Air Monitoring Station	Location
AMS2	Thung Chung Development Pier
AMS3C	Ying Tung Estate Market Rooftop
AMS6	Dragonair/CNAC (Group) Building (A80)
AMS7B	3RS Site Offices

2.2 Monitoring Requirements

2.2.1 The monitoring requirements, equipment, parameters, frequency and duration, methodology, schedule, and meteorological information are described in the monthly EM&A Reports prepared for Contract No. HY/2013/04 and HY/2011/03.

2.2.2 The Action and Limit levels for 1-hr TSP and 24-hr TSP are summarized in **Table 2.2**.

Table 2.2 Action and Limit Levels for Air Quality

Monitoring Station	Action Level ($\mu\text{g}/\text{m}^3$)	Limit Level ($\mu\text{g}/\text{m}^3$)
1 hour TSP		
AMS2	374	500
AMS3C	368	
AMS6	360	
AMS7B	370	
24 hours TSP		
AMS2	176	260
AMS3C	167	
AMS6	173	
AMS7B	183	

2.2.3 The event and action plan is provided in **Appendix C**.

2.2.4 If exceedance(s) at these stations is/are recorded by the ET of the Contract or referred by the other ET under the HZMB project to the Contract, the ET of the Contract will carry out an investigation and findings will be reported in the monthly EM&A Report.

2.3 Monitoring Results

2.3.1 The monitoring results for AMS2, AMS6 and AMS3C and AMS7B are reported in the monthly EM&A Reports prepared for Contract No. HY/2011/03 and HY/2013/04 respectively for the reporting month.

2.3.2 Summary of Action and Limit Level exceedance of 1-hr TSP level and 24-hr TSP level at AMS6 shall be referred to the monthly EM&A report prepared by Contract No. HY/2011/03.

2.3.3 There was no Action and Limit Level exceedances of 1-hr TSP level and 24-hr TSP level recorded at station AMS2, AMS3C and AMS7B as referred to the Environmental Team of Contract No. HY/2013/04 during the reporting period.

MATERIALAB CONSULTANTS LIMITED

Room 723 & 725, 7/F, Block B,
Profit Industrial Building,
1-15 Kwai Fung Crescent, Kwai Fong,
Hong Kong.

Tel : (852)-24508238
Fax : (852)-24508032
Email : mcl@fugro.com



Report No.: 0165/15/ED/1156

3. NOISE MONITORING

3.1 Monitoring Locations

3.1.1 The noise monitoring works for the Contract are covered by Contract No. HY/2013/04 "Hong Kong-Zhuhai-Macao Bridge HKBCF – Infrastructure Works Stage II (Southern Portion)". The ET of the Contract or another ET of the HZMB project is required to conduct noise monitoring at NMS2 and NMS3C as part of EM&A programme if these monitoring stations are no longer covered under Contract No. HY/2013/04. **Figure 2** shows the locations of noise monitoring stations.

Table 3.1 Construction Noise Monitoring Location

ID No.	Description
NMS2	Seaview Crescent
NMS3C	Ying Tung Estate Refuse Collection Point

3.2 Monitoring Requirements

3.2.1 The monitoring requirements, monitoring equipment, monitoring parameters, frequency and duration, monitoring methodology and monitoring schedule are detailed in the monthly EM&A Reports prepared for Contract No. HY/2013/04.

3.2.2 The Action and Limit Levels for construction noise are defined in **Table 3.2**.

Table 3.2 Action and Limit Level for Construction Noise

Monitoring Station	Action Level	Limit Level
For the Time Period 0700-1900 hrs. on Normal Weekdays		
NMS2	When one documented complaint is received	75.0 dB (A) Leq (30 min.)
NMS3C		70.0 dB (A) Leq (30 min.)*

Notes: If works are to be carried out during restricted hours, the conditions stipulated in the construction noise permit issued by the Noise Control Authority have to be followed.

* Reduce to 70 dB(A) for schools and 65 dB(A) during school examination period

3.3 Monitoring Results

3.3.1 The monitoring result for NMS2 and NMS3C is reported in the monthly EM&A Reports prepared for Contract No. HY/2013/04. No noise exceedance was recorded at stations NMS2 and NMS3C by the ET of Contract No. HY/2013/04 during the reporting period.

MATERIALAB CONSULTANTS LIMITED

Room 723 & 725, 7/F, Block B,
Profit Industrial Building,
1-15 Kwai Fung Crescent, Kwai Fong,
Hong Kong.

Tel : (852)-24508238
Fax : (852)-24508032
Email : mcl@fugro.com



Report No.: 0165/15/ED/1156

4. WATER QUALITY MONITORING

4.1 Monitoring Locations

4.1.1 The water monitoring works for the Contract are covered by Contract No. HY/2013/04 "Hong Kong-Zhuhai-Macao-Bridge HKBCF – Infrastructure Works Stage II (Southern Portion)". The ET of the Contract or another ET of the HZMB project is required to conduct impact water quality monitoring at the stations shown in **Table 4.1** and **Figure 3**.

Table 4.1 Water Quality Monitoring Stations

Station	Description	Easting	Northing
IS5	Impact Station (Close to HKBCF construction site)	811579	817106
IS(Mf)6	Impact Station (Close to HKBCF construction site)	812101	817873
IS7	Impact Station (Close to HKBCF construction site)	812244	818777
IS8	Impact Station (Close to HKBCF construction site)	814251	818412
IS(Mf)9	Impact Station (Close to HKBCF construction site)	813273	818850
IS10(N)	Impact Station (Close to HKBCF construction site)	812942	820881
IS(Mf)11	Impact Station (Close to HKBCF construction site)	813562	820716
IS(Mf)16	Impact Station (Close to HKBCF construction site)	814328	819497
IS17	Impact Station (Close to HKBCF construction site)	814539	820391
SR3(N)	Sensitive receivers (San Tau SSSI)	810689	816591
SR4(N)	Sensitive receivers (Tai Ho)	814705	817859
SR5(N)	Control Station	812569	821475
SR6	Sensitive receivers (Sha Chau and Lung Kwu Chau Marine Park)	805837	821818
SR7	Sensitive receivers (Tai Mo Do)	814293	821431
SR10A(N) ⁽¹⁾	Sensitive receivers (Ma Wan FCZ) 1	823644	823484
SR10B(N2) ⁽¹⁾	Sensitive receivers (Ma Wan FCZ) 2	823689	823159
CS(Mf)3(N)	Control Station	808814	822355
CS(Mf)5	Control Station	817990	821129
CS4	Control Station	810025	824004
CS6	Control Station	817028	823992
CSA ⁽²⁾	Control Station	818103	823064

Note:

⁽¹⁾ Additional monitoring station for Ma Wan FCZ

⁽²⁾ Additional control monitoring station for Ma Wan FCZ

Remarks:

The ET of the Contract should conduct impact water quality monitoring at the WQMs listed in the table as part of EM&A programme according to latest notification from ENPO if water quality monitoring is no longer covered by another ET of the HZMB project. The ET of the Contract shall communicate and share the monitoring data to the ET(s) of the other contracts if the water quality monitoring station(s) is/are as part of EM&A programme.

4.2 Monitoring Requirements

4.2.1 The monitoring requirements, monitoring equipment, monitoring parameters, frequency and duration, monitoring methodology, monitoring schedule, meteorological information are detailed in the monthly EM&A Reports prepared by Contract No. HY/2013/04.

4.2.2 The event and action plan is provided in **Appendix C**.

MATERIALAB CONSULTANTS LIMITED

Room 723 & 725, 7/F, Block B,
Profit Industrial Building,
1-15 Kwai Fung Crescent, Kwai Fong,
Hong Kong.

Tel : (852)-24508238
Fax : (852)-24508032
Email : mcl@fugro.com



Report No.: 0165/15/ED/1156

4.2.3 The Action and Limit Levels for Water Quality are provided in **Table 4.2**.

Table 4.2 Action and Limit Levels for Water Quality

Parameters	Action	Limit
DO in mg/L (Surface, Middle & Bottom)	Surface and Middle 5.0 Bottom 4.7	Surface and Middle = 4.2 (except 5 mg/L for FCZ) Bottom = 3.6
SS in mg/L (depth-averaged) at all monitoring stations and control stations	23.5 and 120% of upstream control station's SS at the same tide of the same day*	34.4 and 130% of upstream control station's SS at the same tide of the same day and 10mg/L for WSD Seawater intakes*
Turbidity in NTU (depth-averaged)	27.5 and 120% of upstream control station's turbidity at the same tide of the same day*	47.0 and 130% of upstream control station's turbidity at the same tide of the same day*

* Remarks: Reference is made to EPD approval of adjustment of water quality assessment criteria issued and became effective on 18 February 2013.

Notes:

1. "depth-averaged" is calculated by taking the arithmetic means of reading of all three depths.
2. For DO, non-compliance of the water quality limits occurs when monitoring result is lower than the limits.
3. For turbidity, SS, non-compliance of the water quality limits occurs when monitoring result is higher than the limits.
4. All the figures given in the table are used for reference only and the EPD may amend the figures whenever it is considered as necessary.
5. The 1%-ile of baseline data for dissolved oxygen (surface and middle) and dissolved oxygen (bottom) are 4.2mg/L and 3.6mg/L respectively.

4.2.4 If exceedance(s) at these stations is/are recorded by the ET of the Contract or referred by the other ET under the HZMB project to the Contract, the ET of the Contract will carry out an investigation and findings will be reported in the monthly EM&A Report.

4.3 Monitoring Results

4.3.1 The monitoring and investigation results for the monitoring stations showed in **Table 4.1** are reported in the monthly EM&A Report prepared for Contract No. HY/2013/04. There was no Action and Limit Level exceedance during the reporting period.

5. ECOLOGY MONITORING

5.1 Monitoring Locations

5.1.1 The ecological monitoring works for the Contract are covered by Contract No. HY/2013/04 "Hong Kong-Zhuhai-Macao-Bridge HKBCF – Infrastructure Works Stage II (Southern Portion)". The ET of the Contract or another ET of the HZMB project is required to conduct dolphin monitoring at 24 transects as part of EM&A programme if these transects are no longer covered under Contract No. HY/2013/04. The ecological monitoring should adopt line-transect vessel survey method. The survey follows pre-set and fixed transect lines in the two areas defined by AFCD as: Northeast Lantau survey area; and Northwest Lantau survey area. **Figure 4** shows the co-ordinates for the transect lines and layout map.

Remarks:

The ET of this Contract should conduct impact ecological monitoring as part of EM&A programme according to latest notification from ENPO when the monitoring transect(s) is/are no longer covered by another ET of the HZMB project.

5.2 Monitoring Requirements

5.2.1 The monitoring requirements, monitoring equipment, monitoring parameters, frequency and duration, monitoring methodology, monitoring schedule, meteorological information are detailed in the monthly EM&A Reports prepared by Contract No. HY/2013/04.

5.2.2 The event and action plan is provided in **Appendix C**.

5.2.3 The Action and Limit Levels for Chinese White Dolphin Monitoring are provided in **Table 5.1(a) & Table 5.1(b)**.

Table 5.1(a) Action and Limit Levels for Chinese White Dolphin Monitoring - Approach to Define Action Level (AL) and Limit Level (LL)

	North Lantau Social Cluster	
	NEL	NWL
Action Level	(STG < 70% of baseline) & (ANI < 70% of baseline)	(STG < 70% of baseline) & (ANI < 70% of baseline)
Limit Level	[(STG < 40% of baseline) & (ANI < 40% of baseline)] AND [(STG < 40% of baseline) & (ANI < 40% of baseline)]	

For North Lantau Social Cluster, action level will be trigger if either NEL or NWL fall below the criteria; limit level will be triggered if both NEL and NWL fall below the criteria.

Table 5.2(b) Derived Value of Action Level (AL) and Limit Level (LL) for Chinese White Dolphin Monitoring

	North Lantau Social Cluster	
	NEL	NWL
Action Level	(STG < 4.2) & (ANI < 15.5)	(STG < 6.9) & (ANI < 31.3)
Limit Level	[(STG < 2.4) & (ANI < 8.9)] AND [(STG < 3.9) & (ANI < 17.9)]	

5.2.4 If exceedance(s) at these transects is/are recorded by the ET of the Contract or referred by the other ET under the HZMB project to the Contract, the ET of the Contract will carry out an investigation and findings will be reported in the monthly EM&A Report.

5.3 Monitoring Result

5.3.1 The dolphin survey results for all transects are reported in the monthly EM&A Reports prepared by Contract No. HY/2013/04.

MATERIALAB CONSULTANTS LIMITED

Room 723 & 725, 7/F, Block B,
Profit Industrial Building,
1-15 Kwai Fung Crescent, Kwai Fong,
Hong Kong.

Tel : (852)-24508238
Fax : (852)-24508032
Email : mcl@fugro.com

The logo for MaterialLab, featuring the word "MaterialLab" in a bold, sans-serif font. The "Material" part is in a lighter weight, and "Lab" is in a bolder weight. The text is contained within a horizontal rectangular frame with a double-line border.

Report No.: 0165/15/ED/1156

6. DISPOSAL OF MARINE SEDIMENT EXTRACTED FROM BORED PILING WORKS

6.1 Background

- 6.1.1 After the acceptance of the review of the approved Sediment Quality Report (SQR) for this Project under EPD letter dated 19 August 2015, an approval to dispose the marine sediment extracted from bored piling for this Project was then approved under memo from Secretary, Marine Fill Committee of CEDD dated 20 August 2015 for the disposal of marine sediment extracted from bored piling works. The disposal site allocated to this Project is the Mud Pit CMP Vd of the Confined Marine Sediment Disposal Facility to the East of Sha Chau (ESC) during this reporting period.
- 6.1.2 No extracted marine sediment was treated using cement solidification/stabilisation (Cement S/S) techniques under Contract No. HY/2013/03 during this reporting period. The marine sediment extracted from this Contract was disposed to the MFC allocated disposal sites directly without treatment during this reporting period. As a practical means, the disposal operation is managed by one contractor who is also responsible for applying dumping permit and its subsequent extension applications from EPD. Contract No. HY/2013/03 has been assigned to coordinate and arrange for disposal of extracted marine sediment from all three Contracts (Contract Nos. HY/2013/02, HY/2013/03 and HY/2013/04).

6.2 Dumping Arrangements

- 6.2.1 The barge for disposal of marine sediment was morn at the temporary loading and unloading at the east shore of the HKBCF Island, which has been being used by reclamation contractor (Contract No. HY/2010/02) for reclamation activities. In terms of safety consideration and to avoid mixing of sediment between contracts, each dumping date was allocated to one Contract. The quantity of marine sediment disposed on each date was from one Contract.
- 6.2.2 During dumping, Contractor of Contract No. HY/2013/03 is responsible for transporting the marine sediment from the site area of Contract No. HY/2013/03 to the barge. The estimated quantity of marine sediment in each truck is confirmed by Resident Site Staff of Contract Nos. HY/2013/02, HY/2013/03 and HY/2013/04. The trip tickets for transportation and disposal of marine sediment are collected and checked. Contract No. HY/2013/03 as the dumping permit holder is responsible for reporting to EPD the quantity disposed of as the condition stipulated in the dumping permit. The disposal site allocated to this Project is the Mud Pit CMP Vd of the Confined Marine Sediment Disposal Facility to the East of Sha Chau (ESC) during this reporting period.

6.3 Quantity Disposed

- 6.3.1 No marine sediment extracted from bored piling from this Contract was disposed to allocated dumping site in September 2017. As confirmed by RSS, all marine sediments extracted from HY/2013/02, HY/2013/03 and HY/2013/04 have been completed with the last batch disposal on 30 August 2017. The total disposed quantity up to the last batch is 114.088 (in'000m³). The summary of marine sediment disposed up to end August 2017 is shown in the following table:

MATERIALAB CONSULTANTS LIMITED

Room 723 & 725, 7/F, Block B,
 Profit Industrial Building,
 1-15 Kwai Fung Crescent, Kwai Fong,
 Hong Kong.

Tel : (852)-24508238
 Fax : (852)-24508032
 Email : mcl@fugro.com



Report No.: 0165/15/ED/1156

Table 6.1 Summary of Marine Sediment Disposed to Dumping Site

Month/Year	Quantity disposed (in'000m ³)			Total
	HY/2013/02	HY/2013/03	HY/2013/04	
Jan 2016	1.272	1.950	0.800	4.022
Feb 2016	2.816	2.328	0.704	5.848
Mar 2016	0.600	2.464	3.942	7.006
Apr 2016	5.128	5.602	5.028	15.758
May 2016	0.000	0.000	0.000	0.000
Jun 2016	1.200	4.584	1.578	7.362
Sub-Total	11.016	16.928	12.052	39.996
Jul 2016	0.728	10.728	3.690	15.146
Aug 2016	1.784	1.544	4.428	7.756
Sep 2016	2.328	6.816	3.888	13.032
Oct 2016	1.096	2.376	5.286	8.758
Nov 2016	0.000	0.000	0.000	0.000
Dec 2016	1.568	4.960	2.538	9.066
Cat L in Dec 2016	0.000	2.792	3.570	6.362
Sub-Total	18.520	46.144	35.452	100.116
Jan 2017	0.000	0.656	6.552	7.208
Feb 2017	0.088	0.264	1.380	1.732
Mar 2017	0.000	0.000	0.000	0.000
Apr 2017	0.624	1.288	0.000	1.912
May 2017	0.000	1.440	0.000	1.440
June 2017	1.432	0.000	0.000	1.432
July 2017	0.000	0.000	0.000	0.000
August 2017	0.000	0.248	0.000	0.248
Total	20.664	50.040	43.384	114.088

Note: All sediments are in Type II disposal method except Cat L (in Type I)

MATERIALAB CONSULTANTS LIMITED

Room 723 & 725, 7/F, Block B,
Profit Industrial Building,
1-15 Kwai Fung Crescent, Kwai Fong,
Hong Kong.

Tel : (852)-24508238
Fax : (852)-24508032
Email : mcl@fugro.com



Report No.: 0165/15/ED/1156

7. ENVIRONMENTAL SITE INSPECTION AND AUDIT

7.1 Site Inspection

- 7.1.1 As all the sections under Contract No. HY/2013/03 were handed over to the relevant authorities on 24 October 2018 and the site had been changed to a closed area, no site inspection was conducted.
- 7.1.2 The landscape work of green roof for Contract No. HY/2013/03 was commenced on 7 November 2017. The landscape work of all areas at ground level for Contract No. HY/2013/03 was commenced at early February 2018. Detail commencement date of each building were shown in **Table 7.1**. As all the sections under Contract No. HY/2013/03 were handed over to the relevant authorities on 24 October 2018 and the site had been changed to a closed area, the implementation of mitigation measures for landscape and visual resources recommended in the EIA Report could not be monitored during the reporting period.

Table 7.1 Commencement date of green roof for each building

Building No. of Green Roof	Commencement dates of planting for roof greening
037	7 Nov 2017
043	20 Dec 2017
041	27 Dec 2017
026	22 Jan 2018
039	22 Jan 2018
All areas at ground level	Early Feb 2018
031	8 Mar 2018
046	8 Mar 2018

7.2 Advice on the Solid and Liquid Waste Management Status

- 7.2.1 The Contractor of Contract No. HY/2013/03 registered as a chemical waste producer for the Contract. Sufficient numbers of receptacles were available for general refuse collection and sorting.
- 7.2.2 The monthly summary of waste flow table for Contract No. HY/2013/03 (includes Contract No. HY/2013/06 within Contract No. HY/2013/03 works area) are detailed in **Appendix D**.
- 7.2.3 Contract No. HY/2013/03 has been assigned to arrange for delivery of surplus filling materials from Contract No. HY/2013/03 to other projects, including Tuen Mun - Chek Lap Kok Link (TM-CLKL) project of HZMB, the Airport Authority Hong Kong's Three Runway (3RS) Project, Wan Chai Development Phase II project, Contract No. HY/2013/02 of HKBCF and Hong Kong Link Road (HKLR) project of HZMB. As confirmed by RSS, all surplus filling materials delivery to other projects have been completed with the last batch on 7 May 2018. The total transported quantity up to the last batch is 379.48358 (in'000m³). The summary of surplus filling materials delivered to other projects up to the end of May 2018 is shown in **Table 7.2**.

MATERIALAB CONSULTANTS LIMITED

Room 723 & 725, 7/F, Block B,
Profit Industrial Building,
1-15 Kwai Fung Crescent, Kwai Fong,
Hong Kong.

Tel : (852)-24508238
Fax : (852)-24508032
Email : mcl@fugro.com

MaterialLab

Report No.: 0165/15/ED/1156

Table 7.2 Summary of Surplus Filling Materials Delivered from Contract No. HY/2013/03 to other projects

Month/Year	Density (In tonnes/m ³)	Quantity disposed (In '000m ³)					Total
		To HY/2013/02	To TM-CLKL Project	To 3RS Project	To WDII Project	To HKLR Project	
May 2017	2.3	0	12.637	0	0	0	12.637
June 2017	2.63925	0	14.769	11.238	0	0	26.007
July 2017	1.9	0	4.406	34.875	10.048	0.760	50.089
August 2017	1.9	0.480	0	67.942	2.761	7.455	78.638
September 2017	1.9	5.544	0	62.770	0	4.648	72.962
October 2017	/	3.384	0	45.92809	0	0	49.31209
November 2017	/	5.412	0	5.507	0	0	10.919
December 2017	/	12.57173	0	0	0	0	12.57173
January 2018	/	10.228	0	0	0	0	10.228
February 2018	/	0	0	0	0	0	0
March 2018	/	0.45276	0	0	0	0	0.45276
April 2018	/	0	42.544	0	0	0	42.544
May 2018	/	0	13.123	0	0	0	13.123
Total	/	38.07249	87.479	228.26009	12.809	12.863	379.48358

Remarks:

- The variation in density is due to different compositions of surplus filling materials
- There may be discrepancies in the total quantities with the quantities of inert C&D materials stated in Appendix D and section 7.2.4, due to rounding errors
- No density was given from October 2017 to May 2018 due to the direct volume figures as provided and confirmed by the RSS

7.2.4 0.000 (in'000m³) of excavated marine sediment (from Contract No. HY/2013/03), 0.000 (in'000m³) of Inert C & D Wastes and 0.000 (in'000m³) of Non-inert C & D Wastes were generated (from Contract No. HY/2013/03) in this reporting period. 0.000 (in'000m³) of Inert C & D Wastes were reused in other projects and 0.000 (in'000m³) of Inert C & D Wastes was disposed as public fill. 0.000 (in tonnes) of Inert C & D Wastes and 0.000 (in tonnes) of Non-inert C & D Wastes were generated (from Contract No. HY/2013/06 within Contract No. HY/2013/03 works area) in this reporting period. 0.000 (in tonnes) metals were generated and recycled (from Contract No. HY/2013/06 within Contract No. HY/2013/03 works area) in this reporting period.

7.2.5 The Contractor was reminded that chemical waste containers should be properly treated and stored temporarily in designated chemical waste storage area on site in accordance with the Code of Practice on the Packing, Labelling and Storage of Chemical Waste.

7.3 Environmental Licenses and Permits

7.3.1 The valid environmental licenses and permits for Contract No. HY/2013/03 (includes Contract No. HY/2013/06 within Contract No. HY/2013/03 works area) during the reporting period are summarized in **Appendix E**. The Contractor of Contract No. HY/2013/06 was advised to register as a chemical waste producer when chemical waste is expected to generate for the foreseeable future from the operations (For Registration as Waste Producer Pursuant to Waste Disposal (Chemical Waste) (General) Regulation).

7.4 Implementation Status of Environmental Mitigation Measures

7.4.1 In response to the site audit findings, the Contractor carried out corrective actions.

7.4.2 A summary of the Implementation Schedule of Environmental Mitigation Measures (EMIS) is presented in **Appendix F**. All necessary mitigation measures at this stage of works were implemented properly.

MATERIALAB CONSULTANTS LIMITED

Room 723 & 725, 7/F, Block B,
Profit Industrial Building,
1-15 Kwai Fung Crescent, Kwai Fong,
Hong Kong.

Tel : (852)-24508238
Fax : (852)-24508032
Email : mcl@fugro.com

MaterialLab

Report No.: 0165/15/ED/1156

- 7.4.3 As confirmed by RSS, all surplus filling materials transported from Contract No. HY/2013/03 to other projects by marine vessels have been completed with the last batch delivered on 24 March 2018.
- 7.4.4 With respect to condition 3.26A of EP-353/2009/K approved by EPD on 11 April 2016, the numbers and operating periods of floating grout production facilities and floating concrete batching plants on-site to review on the compliance to this EP condition were checked. Under Contract No. HY/2013/03, no floating concrete batching plant was operated on-site during the reporting period.
- 7.4.5 As all the works in Box Culvert B had been completed, the silt curtain was uninstalled in July 2018. The Dolphin Watching Plan (DWP) is no longer applicable.
- 7.5 Summary of Exceedance of the Environmental Quality Performance Limit**
- 7.5.1 Summary of Action and Limit Level exceedance of 1-hr TSP level and 24-hr TSP level at AMS6 shall be referred to the monthly EM&A report prepared by Contract No. HY/2011/03.
- 7.5.2 There was no Action and Limit Level exceedance of 1-hr TSP level and 24-hr TSP level recorded at station AMS2, AMS3C and AMS7B by the Environmental Team of Contract No. HY/2013/04 during the reporting period.
- 7.5.3 There was no Action and Limit Level exceedance for noise recorded at station NMS2 and station NMS3C by the Environmental Team of Contract No. HY/2013/04 during the reporting period.
- 7.5.4 Summary of Action and Limit Level exceedance of water quality at the monitoring stations shown as shown at **Table 4.1** shall be referred to the monthly EM&A report prepared by Contract No. HY/2013/04.
- 7.5.5 There was no Action and Limit Level exceedance of water quality recorded at the monitoring stations as shown at **Table 4.1** by the Environmental Team of Contract No. HY/2013/04 during the reporting period.
- 7.5.6 Ecological monitoring results at all transects are reported in the EM&A report prepared by Contract No. HY/2013/04.
- 7.6 Summary of Complaints, Notification of Summons and Successful Prosecution**
- 7.6.1 There was no complaint received in relation to the environmental impact during the reporting period. The details of cumulative statistics of Environmental Complaints are provided in **Appendix G**.
- 7.6.2 There was no notification for summons or prosecutions received in relation to the environmental impact during this reporting period.
- 7.6.3 Statistics on environmental complaints, notifications of summons and successful prosecutions are provided in **Appendix G**.

MATERIALAB CONSULTANTS LIMITED

Room 723 & 725, 7/F, Block B,
Profit Industrial Building,
1-15 Kwai Fung Crescent, Kwai Fong,
Hong Kong.

Tel : (852)-24508238
Fax : (852)-24508032
Email : mcl@fugro.com

The logo for MaterialLab, featuring the word "MaterialLab" in a bold, sans-serif font. The text is white and set against a black rectangular background with horizontal lines above and below it.

Report No.: 0165/15/ED/1156

8. FUTURE KEY ISSUES

8.1 Construction Programme for the Coming Months

8.1.1 As informed by the Contractor, the following are the major construction activities anticipated in February 2019:

For Contract No. HY/2013/03

1. Maintenance Works at All Site Area;

For Contract No. HY/2013/06 within Contract No. HY/2013/03 works area

1. Maintenance Works at Vehicle Kiosk & Building 037.

8.2 Environmental Site Inspection Schedule for the Coming Month

8.2.1 As all the sections under Contract No. HY/2013/03 and HY/2013/06 were handed over to the relevant authorities on 24 October 2018 and the site had been changed to a closed area, no site inspection will be conducted.

MATERIALAB CONSULTANTS LIMITED

Room 723 & 725, 7/F, Block B,
Profit Industrial Building,
1-15 Kwai Fung Crescent, Kwai Fong,
Hong Kong.

Tel : (852)-24508238
Fax : (852)-24508032
Email : mcl@fugro.com

MaterialLab

Report No.: 0165/15/ED/1156

9. CONCLUSIONS

- 9.1 Commencement of Contract No. HY/2013/03 took place on 10 April 2015. The commencement date for construction works and the EM&A programme of Contract No. HY/2013/03 commenced on 29 August 2015 (commencement of Contract No. HY/2013/06 took place on 14 August 2015. The commencement date for construction works and the EM&A programme of Contract No. HY/2013/06 commenced on 13 September 2016 within Contract No. HY/2013/03 works area).
- 9.2 Summary of Action and Limit Level exceedance of 1-hr TSP level and 24-hr TSP level at AMS6 shall be referred to the monthly EM&A report prepared by Contract No. HY/2011/03.
- 9.3 There was no Action and Limit Level exceedance of 1-hr TSP level and 24-hr TSP level recorded at station AMS2, AMS3C and AMS7B by the Environmental Team of Contract No. HY/2013/04 during the reporting period.
- 9.4 There was no Action and Limit Level exceedance for noise recorded at station NMS2 and NMS3C by the Environmental Team of Contract No. HY/2013/04 during the reporting period.
- 9.5 Summary of Action and Limit Level exceedance of water quality at the monitoring stations shown as shown at **Table 4.1** shall be referred to the monthly EM&A report prepared by Contract No. HY/2013/04.
- 9.6 There was no Action and Limit Level exceedance of water quality recorded at the monitoring stations shown as shown at **Table 4.1** by the Environmental Team of Contract No. HY/2013/04 during the reporting period.
- 9.7 Ecological monitoring results at all transects are reported in the EM&A report prepared by Contract No. HY/2013/04.
- 9.8 No site inspection was carried out during the reporting period as all the sections under Contract No. HY/2013/03 and HY/2013/06 were handed over to the relevant authorities on 24 October 2018 and the site had been changed to a closed area.
- 9.9 There was no complaint received in relation to the environmental impact during the report period.
- 9.10 There were no notifications of summons or prosecutions received during the reporting period.

MATERIALAB CONSULTANTS LIMITED

Room 723 & 725, 7/F, Block B,
Profit Industrial Building,
1-15 Kwai Fung Crescent, Kwai Fong,
Hong Kong.

Tel : (852)-24508238
Fax : (852)-24508032
Email : mcl@fugro.com



Report No.: 0165/15/ED/1156

Figure 1

Air Quality Monitoring Stations

MATERIALAB CONSULTANTS LIMITED

Room 723 & 725, 7/F, Block B,
Profit Industrial Building,
1-15 Kwai Fung Crescent, Kwai Fong,
Hong Kong.

Tel : (852)-24508238
Fax : (852)-24508032
Email : mcl@fugro.com



Report No.: 0165/15/ED/1156

Figure 2

Noise Monitoring Stations

MATERIALAB CONSULTANTS LIMITED

Room 723 & 725, 7/F, Block B,
Profit Industrial Building,
1-15 Kwai Fung Crescent, Kwai Fong,
Hong Kong.

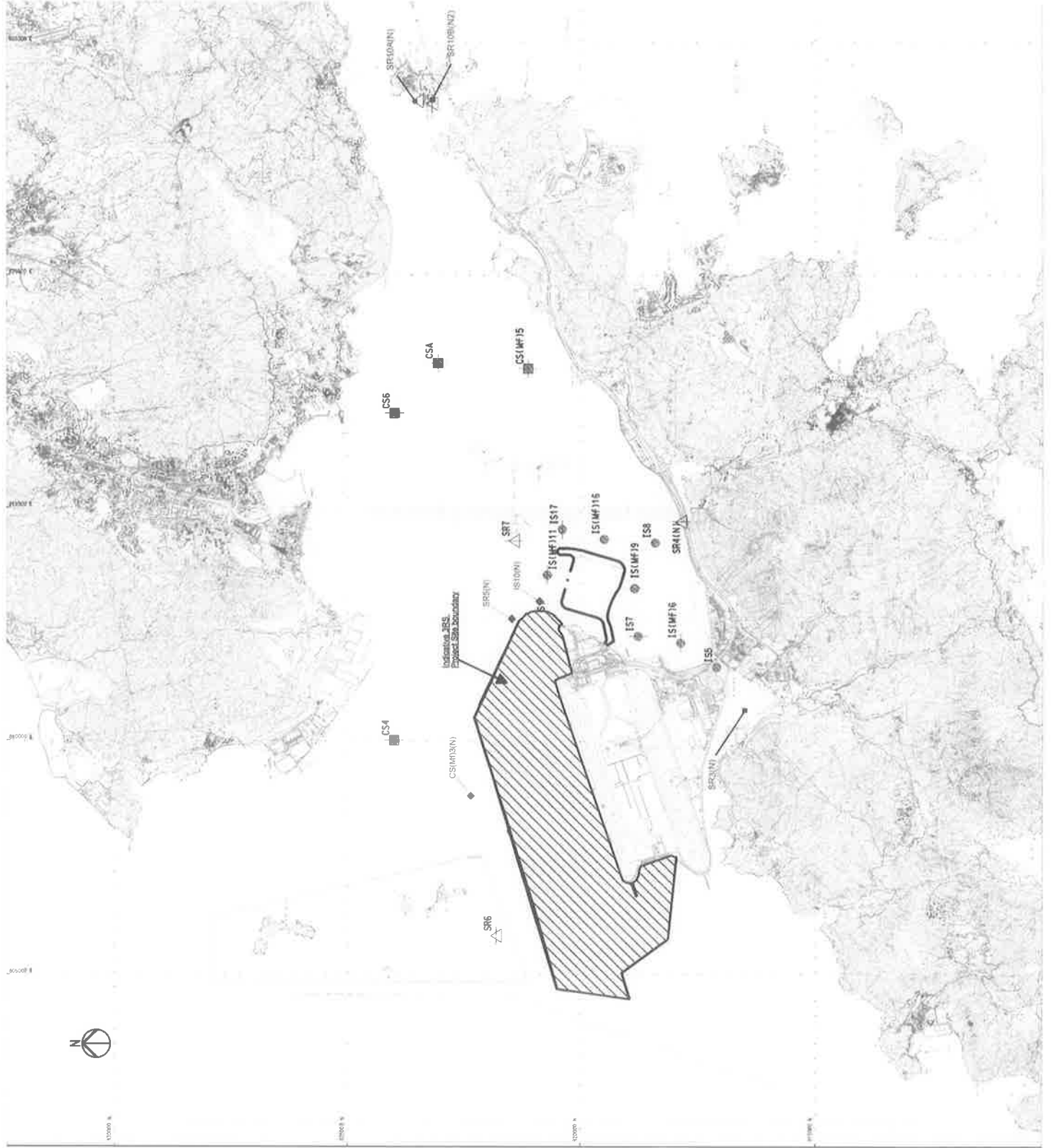
Tel : (852)-24508238
Fax : (852)-24508032
Email : mcl@fugro.com

MaterialLab

Report No.: 0165/15/ED/1156

Figure 3

Water Quality Monitoring Stations



LEGEND

- IS IMPACT STATIONS
- CS CONTROL / FAR FIELD STATIONS
- △ SR SENSITIVE RECEIVERS STATIONS

FIGURE 4.1 – LOCATION OF WATER QUALITY MONITORING STATIONS

SETTING OUT SCHEDULE

MONITORING STATIONS	CO-ORDINATES	
	EASTING	NORTHING
IS5	811579	817106
IS16(MF16)	812101	817873
IS7	812244	818777
IS9	814251	818412
IS16(MF19)	813273	816850
IS10	812577	820670
IS10(N)	812942	820455
IS16(MF11)	813562	820716
IS16(MF16)	814328	819497
IS17	814539	820391
SR3(N)	810669	816591
SR4(N)	814705	817859
SR5	811489	820455
SR5(N)	812569	821475
SR6	805837	821818
SR7	814293	821431
SR10(N)	823644	823484
SR10(N2)	823669	823159
CS16(MF13)	809989	821117
CS16(MF13(N))	808814	822355
CS16(MF15)	817990	821129
CS4	810025	824004
CS6	817028	823992
CSA	818103	823064

MATERIALAB CONSULTANTS LIMITED

Room 723 & 725, 7/F, Block B,
Profit Industrial Building,
1-15 Kwai Fung Crescent, Kwai Fong,
Hong Kong.

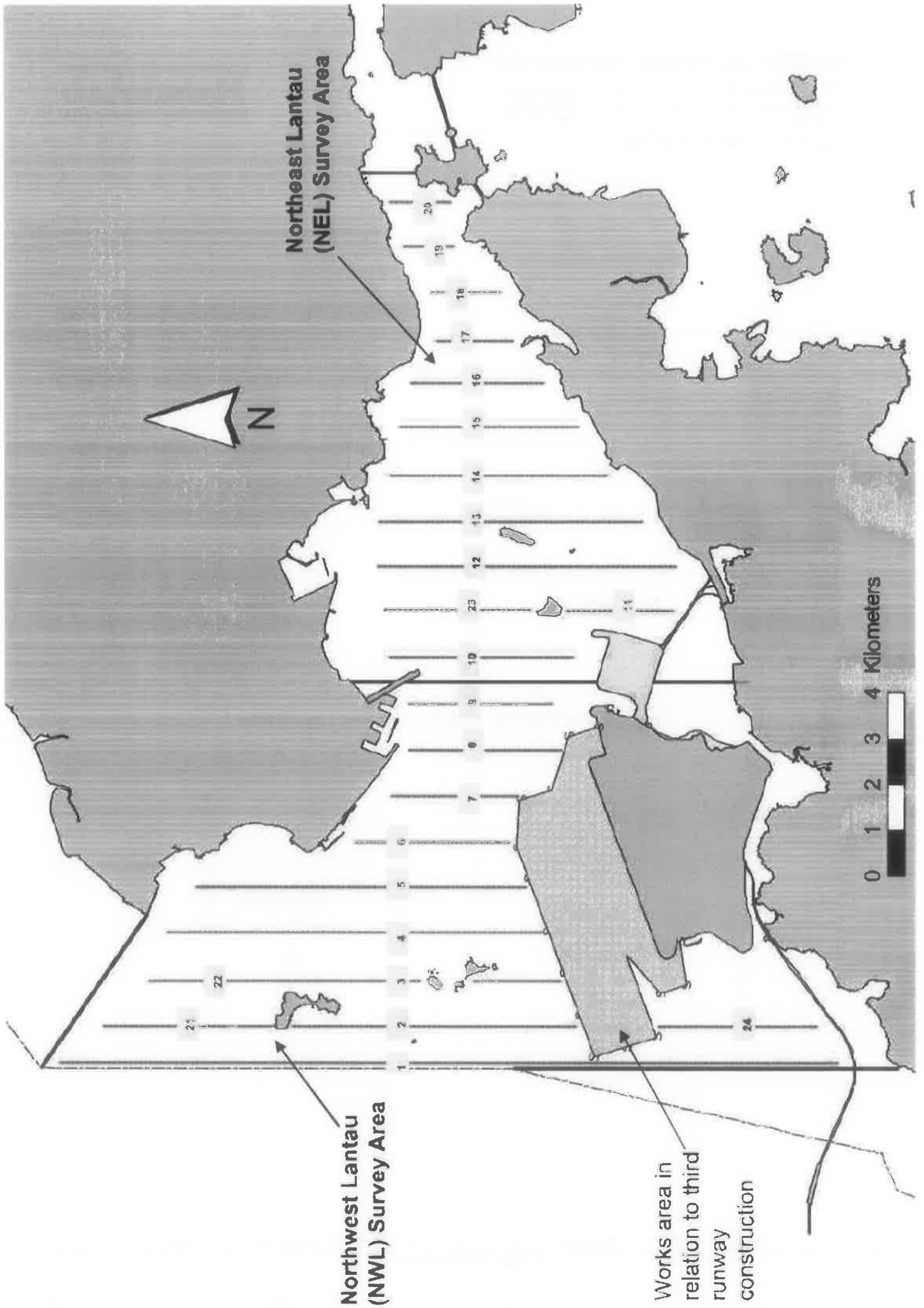
Tel : (852)-24508238
Fax : (852)-24508032
Email : mcl@fugro.com

MaterialLab

Report No.: 0165/15/ED/1156

Figure 4

Ecological Monitoring Transect Line and Layout Map



MATERIALAB CONSULTANTS LIMITED

Room 723 & 725, 7/F, Block B,
Profit Industrial Building,
1-15 Kwai Fung Crescent, Kwai Fong,
Hong Kong.

Tel : (852)-24508238
Fax : (852)-24508032
Email : mcl@fugro.com

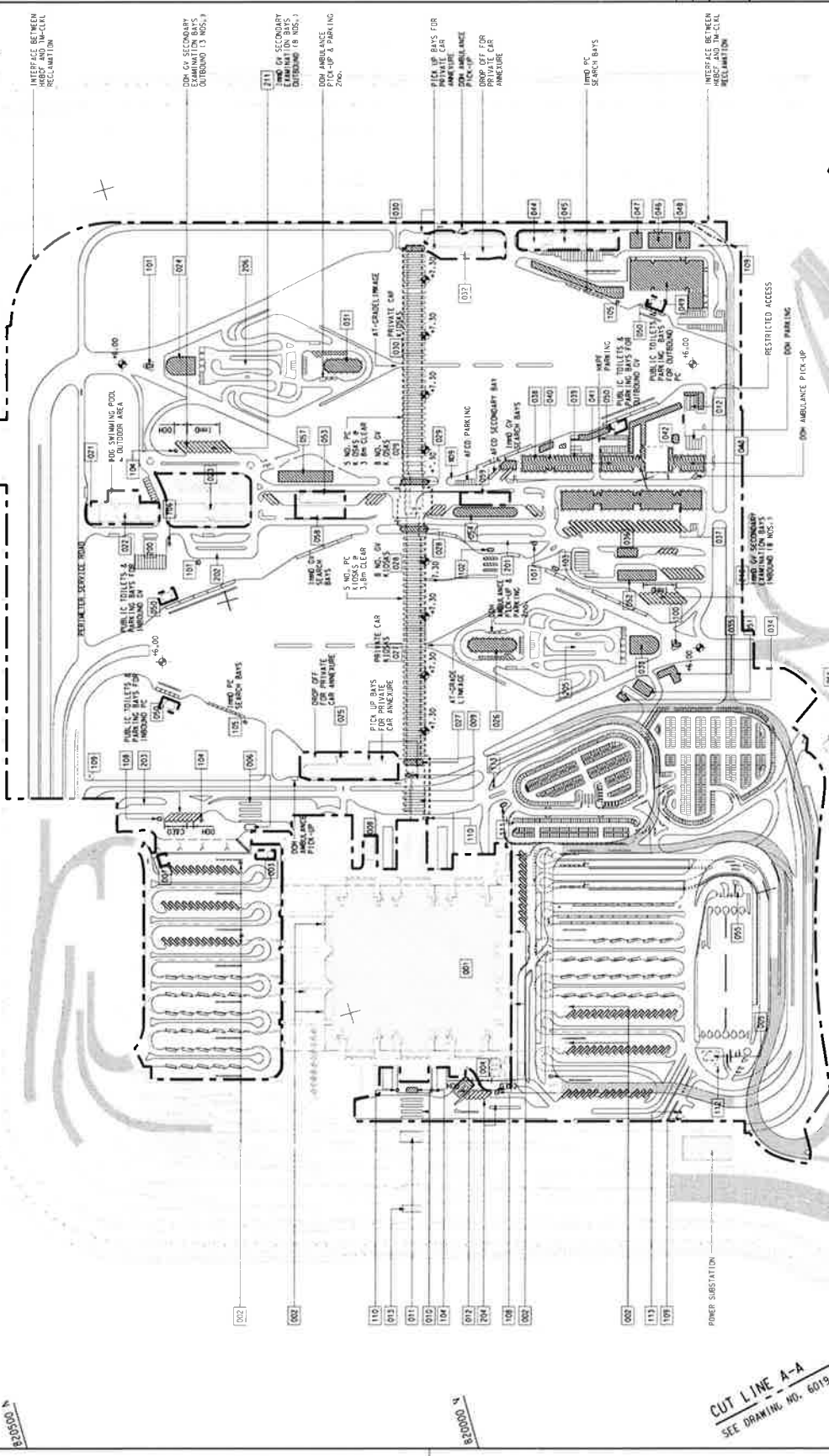


Report No.: 0165/15/ED/1156

Appendix A

Location of Works Areas

NOTE:
 THIS DRAWING TO BE READ IN CONJUNCTION WITH
 DRAWING NO. 60191048/C3/000/C00/1002



CUT LINE A-A
 SEE DRAWING NO. 60191048/C3/000/C00/1002

NO.	REVISION	DATE
1	ISSUED FOR PERMITTING	10/11/11
2	REVISED FOR COMMENTS	11/15/11
3	REVISED FOR COMMENTS	12/01/11
4	REVISED FOR COMMENTS	01/10/12
5	REVISED FOR COMMENTS	02/01/12
6	REVISED FOR COMMENTS	02/01/12
7	REVISED FOR COMMENTS	02/01/12
8	REVISED FOR COMMENTS	02/01/12
9	REVISED FOR COMMENTS	02/01/12
10	REVISED FOR COMMENTS	02/01/12
11	REVISED FOR COMMENTS	02/01/12
12	REVISED FOR COMMENTS	02/01/12
13	REVISED FOR COMMENTS	02/01/12
14	REVISED FOR COMMENTS	02/01/12
15	REVISED FOR COMMENTS	02/01/12
16	REVISED FOR COMMENTS	02/01/12
17	REVISED FOR COMMENTS	02/01/12
18	REVISED FOR COMMENTS	02/01/12
19	REVISED FOR COMMENTS	02/01/12
20	REVISED FOR COMMENTS	02/01/12
21	REVISED FOR COMMENTS	02/01/12
22	REVISED FOR COMMENTS	02/01/12
23	REVISED FOR COMMENTS	02/01/12
24	REVISED FOR COMMENTS	02/01/12
25	REVISED FOR COMMENTS	02/01/12
26	REVISED FOR COMMENTS	02/01/12
27	REVISED FOR COMMENTS	02/01/12
28	REVISED FOR COMMENTS	02/01/12
29	REVISED FOR COMMENTS	02/01/12
30	REVISED FOR COMMENTS	02/01/12
31	REVISED FOR COMMENTS	02/01/12
32	REVISED FOR COMMENTS	02/01/12
33	REVISED FOR COMMENTS	02/01/12
34	REVISED FOR COMMENTS	02/01/12
35	REVISED FOR COMMENTS	02/01/12
36	REVISED FOR COMMENTS	02/01/12
37	REVISED FOR COMMENTS	02/01/12
38	REVISED FOR COMMENTS	02/01/12
39	REVISED FOR COMMENTS	02/01/12
40	REVISED FOR COMMENTS	02/01/12
41	REVISED FOR COMMENTS	02/01/12
42	REVISED FOR COMMENTS	02/01/12
43	REVISED FOR COMMENTS	02/01/12
44	REVISED FOR COMMENTS	02/01/12
45	REVISED FOR COMMENTS	02/01/12
46	REVISED FOR COMMENTS	02/01/12
47	REVISED FOR COMMENTS	02/01/12
48	REVISED FOR COMMENTS	02/01/12
49	REVISED FOR COMMENTS	02/01/12
50	REVISED FOR COMMENTS	02/01/12
51	REVISED FOR COMMENTS	02/01/12
52	REVISED FOR COMMENTS	02/01/12
53	REVISED FOR COMMENTS	02/01/12
54	REVISED FOR COMMENTS	02/01/12
55	REVISED FOR COMMENTS	02/01/12
56	REVISED FOR COMMENTS	02/01/12
57	REVISED FOR COMMENTS	02/01/12
58	REVISED FOR COMMENTS	02/01/12
59	REVISED FOR COMMENTS	02/01/12
60	REVISED FOR COMMENTS	02/01/12
61	REVISED FOR COMMENTS	02/01/12
62	REVISED FOR COMMENTS	02/01/12
63	REVISED FOR COMMENTS	02/01/12
64	REVISED FOR COMMENTS	02/01/12
65	REVISED FOR COMMENTS	02/01/12
66	REVISED FOR COMMENTS	02/01/12
67	REVISED FOR COMMENTS	02/01/12
68	REVISED FOR COMMENTS	02/01/12
69	REVISED FOR COMMENTS	02/01/12
70	REVISED FOR COMMENTS	02/01/12
71	REVISED FOR COMMENTS	02/01/12
72	REVISED FOR COMMENTS	02/01/12
73	REVISED FOR COMMENTS	02/01/12
74	REVISED FOR COMMENTS	02/01/12
75	REVISED FOR COMMENTS	02/01/12
76	REVISED FOR COMMENTS	02/01/12
77	REVISED FOR COMMENTS	02/01/12
78	REVISED FOR COMMENTS	02/01/12
79	REVISED FOR COMMENTS	02/01/12
80	REVISED FOR COMMENTS	02/01/12
81	REVISED FOR COMMENTS	02/01/12
82	REVISED FOR COMMENTS	02/01/12
83	REVISED FOR COMMENTS	02/01/12
84	REVISED FOR COMMENTS	02/01/12
85	REVISED FOR COMMENTS	02/01/12
86	REVISED FOR COMMENTS	02/01/12
87	REVISED FOR COMMENTS	02/01/12
88	REVISED FOR COMMENTS	02/01/12
89	REVISED FOR COMMENTS	02/01/12
90	REVISED FOR COMMENTS	02/01/12
91	REVISED FOR COMMENTS	02/01/12
92	REVISED FOR COMMENTS	02/01/12
93	REVISED FOR COMMENTS	02/01/12
94	REVISED FOR COMMENTS	02/01/12
95	REVISED FOR COMMENTS	02/01/12
96	REVISED FOR COMMENTS	02/01/12
97	REVISED FOR COMMENTS	02/01/12
98	REVISED FOR COMMENTS	02/01/12
99	REVISED FOR COMMENTS	02/01/12
100	REVISED FOR COMMENTS	02/01/12

Figure 1-1
 Current Layout Plan

AECOM
 Rogers Shirk Harbour + Partners
 BURO HAPPOLD ATKINS AD

Aedas

DRGNO 60191048/C3/000/C00/1001

DATE: 02/01/12
 DRAWN BY: [Name]
 CHECKED BY: [Name]
 APPROVED BY: [Name]

© COPYRIGHT RESERVED

SETTING OUT POINT		
POINT	EASTING	NORTHING
301	817467.265	819162.863
302	817316.771	819069.828
303	817327.738	819106.795
304	817446.165	819117.411
305	817340.825	819217.314
306	817387.350	819233.403
307	817387.861	819043.396
308	817466.132	819051.047
309	817469.783	819087.161
310	817513.449	819113.764
311	817347.717	819041.062
312	817462.595	819022.307
313	817444.188	819033.157
314	817521.154	819001.065
315	817521.345	818991.306
316	817629.289	819006.620
317	817491.827	819024.596
318	817527.110	819075.789
319	817564.404	819026.472
320	817564.500	819006.524
321	817564.501	818984.621

817200 E
817400 E
817600 E

819200 N
819000 N

NORTH LINE MARKING

WORKS AREA WA3
TUNG CHUNG

LOCATION PLAN
SCALE 1:25000

NOTES:

1. DIMENSIONS ARE RELATED TO MONG KONG METRIC GRID (1980).
2. DIMENSIONS ARE IN MILLIMETERS AND PLACEMENT ARE IN METRES UNLESS OTHERWISE SHOWN.

LEGEND:

WORKS AREA BOUNDARY

PORTION 3.1
PORTION 3.2
PORTION 3.3
PORTION 3.4
PORTION 3.5
PORTION 3.6
PORTION 3.7
PORTION 3.8
PORTION 3.9
PORTION 3.10

NON-BUILDING AREA (ROOM TRAIL)

FOR CONSTRUCTION

C	WORKING DRAWING	REVISED	14/01/15
B	TENDER ADDENDUM NO. 2	REVISED	14/01/14
A	TENDER ADDENDUM NO. 1	REVISED	14/01/14
-	TENDER DRAWING	REVISED	14/01/14
01	REVISED	REVISED	14/01/14
02	REVISED	REVISED	14/01/14

TRA
TRANSPORT AND INFRASTRUCTURE AUTHORITY
香港運輸及基礎設施管理局

TR
TRADING CORPORATION
貿易發展局

TR
TRADING CORPORATION
貿易發展局

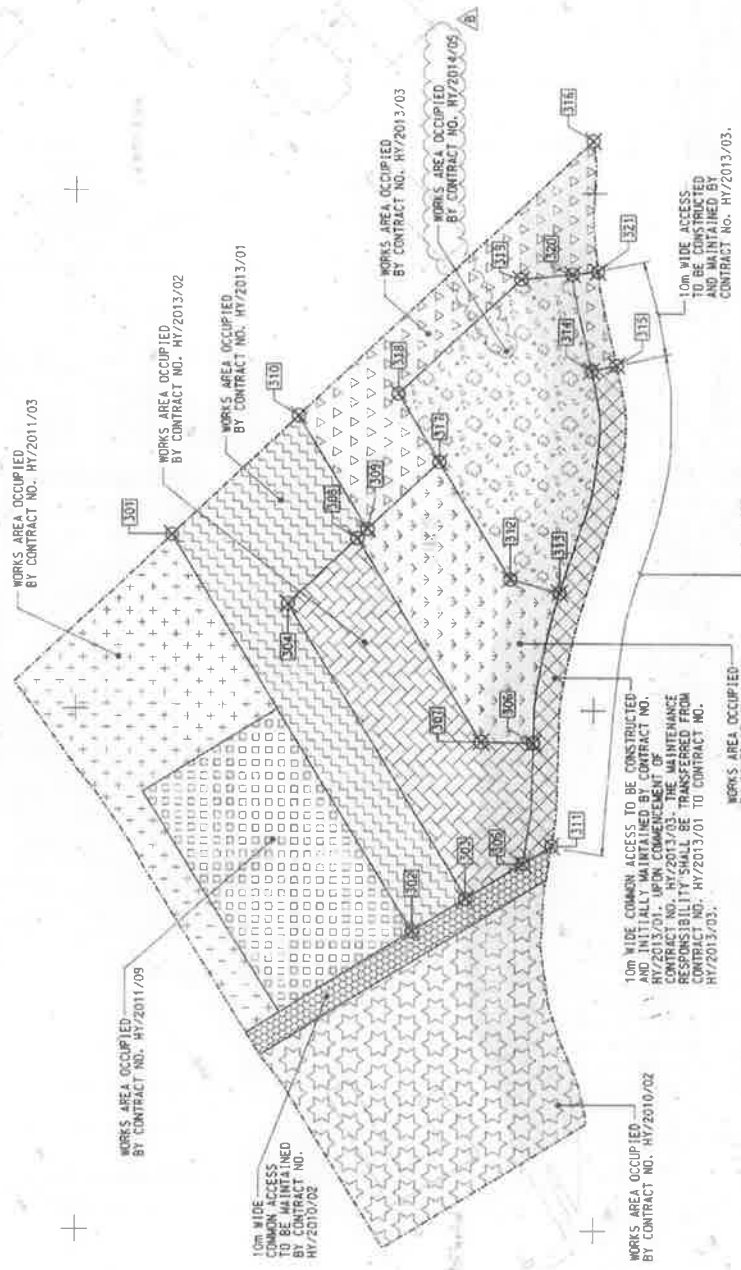
TRADING CORPORATION
貿易發展局

WORKS AREA WA3

AECOM
Robus Smit Harbour + Partners
RUBUS SMIT

PROJECT NO. 60191048/C3/000/C00/1051C

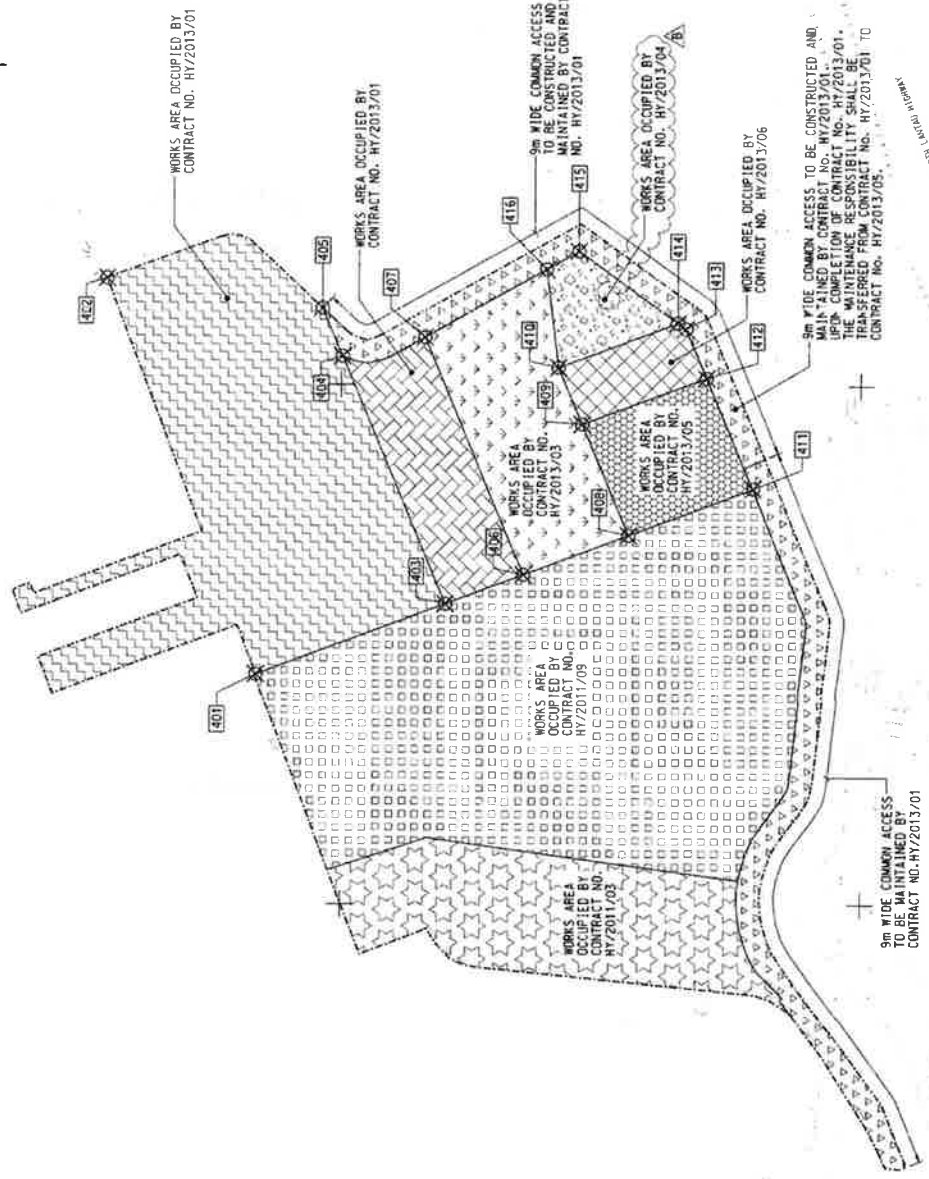
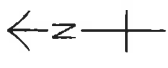
DATE: 14/01/15
BY: [Signature]
CHECKED BY: [Signature]
SCALE: 1:25000
DRAWING NO. [Number]
WORKING DRAWING
COPYRIGHT RESERVED



CONTROLLED DOCUMENT

SETTING OUT POINT		
POINT	EASTING	NORTHING
401	822400.191	822852.315
402	822400.531	822868.415
403	822515.608	822555.848
404	822610.840	822558.642
405	822620.428	822667.753
406	822525.988	822528.813
407	822612.348	822582.950
408	822592.232	822483.581
409	822584.981	822505.476
410	822642.842	822512.581
411	822610.379	822411.586
412	822592.548	822462.070
413	822631.874	822462.070
414	822584.170	822462.070
415	822651.725	822508.895
416	822641.758	822511.92

822600 E
822400 E



LOCATION PLAN
SCALE 1 : 25000

NOTES:

1. COORDINATES ARE RELATED TO HONG KONG METRIC GRID (1980).
2. DIMENSIONS ARE IN MILLIMETER AND CHANGE ARE IN METRIC ACCESS UNITS (1:500).

LEGEND:

- WORKS AREA BOUNDARY**
- PORTION 4.1
 - PORTION 4.2
 - PORTION 4.3
 - PORTION 4.4
 - PORTION 4.5
 - PORTION 4.6
 - PORTION 4.7
 - PORTION 4.8
 - PORTION 4.9

CONTROLLED DOCUMENT

FOR CONSTRUCTION

NO.	DATE	DESCRIPTION
1	15/01/15	ISSUED
2	23/01/15	REVISED
3	14/01/14	REVISED
4	14/01/14	REVISED
5	14/01/14	REVISED
6	14/01/14	REVISED
7	14/01/14	REVISED
8	14/01/14	REVISED
9	14/01/14	REVISED
10	14/01/14	REVISED

TRAFFIC CONTROL DEPARTMENT
HONG KONG POLICE DEPARTMENT
HONG KONG BOUNDARY SURVEYING FACILITIES
ANCILLARY BUILDINGS AND FACILITIES

WORKS AREA WA4

AECOM
Rogers Shirk Harbour + Partners
BUND HAPPOLD
ATKINS
ADI

WORKING DRAWING

DRAWING NO. 60191048/C3/000/C00/1052C
DATE: 15/01/15
SCALE: 1:500
PROJECT: KAP SHUI MUN
DRAWN BY: [Name]
CHECKED BY: [Name]
DATE: 15/01/15

© COPYRIGHT RESERVED

MATERIALAB CONSULTANTS LIMITED

Room 723 & 725, 7/F, Block B,
Profit Industrial Building,
1-15 Kwai Fung Crescent, Kwai Fong,
Hong Kong.

Tel : (852)-24508238
Fax : (852)-24508032
Email : mcl@fugro.com

MaterialLab

Report No.: 0165/15/ED/1156

Appendix B

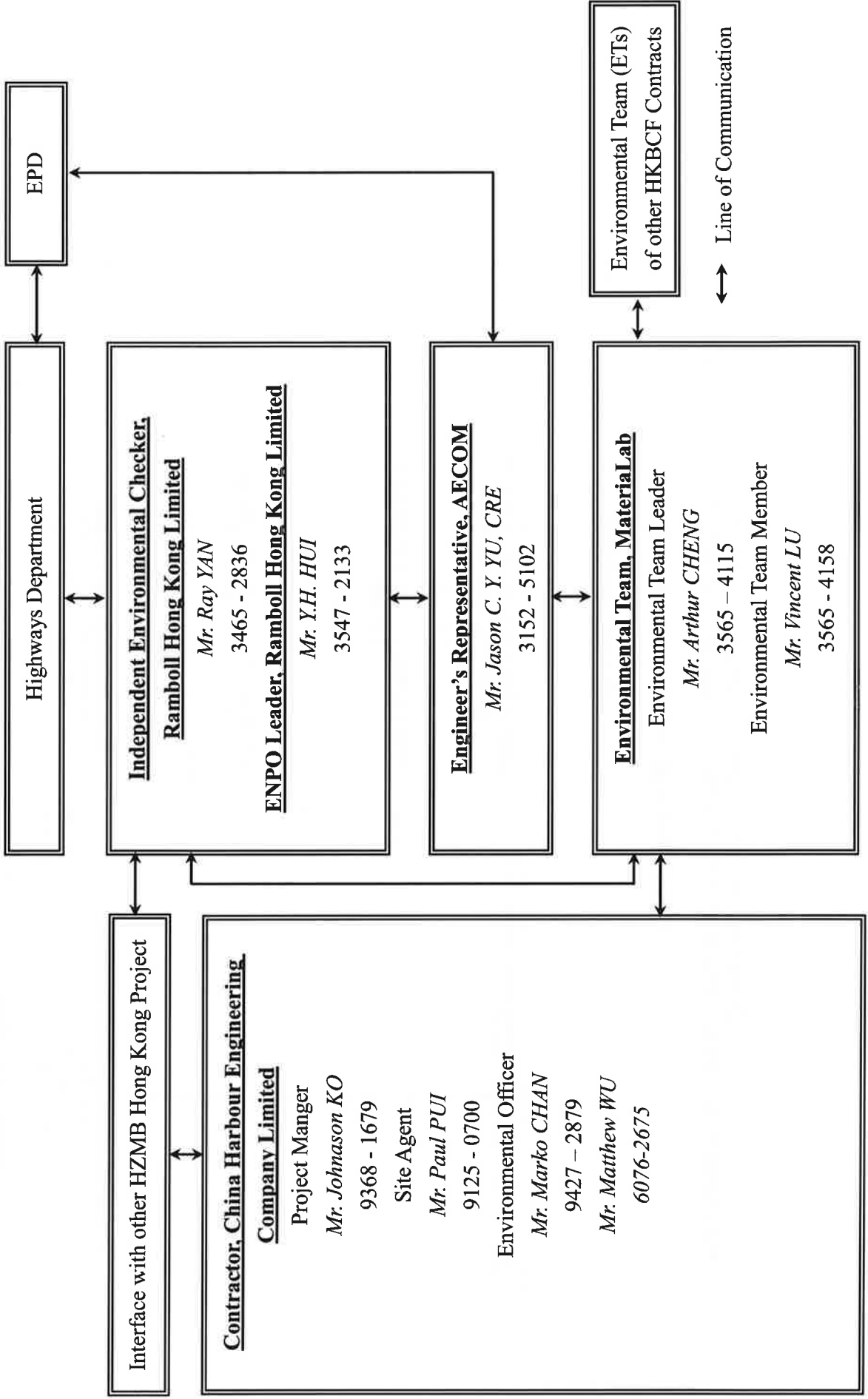
Project Organization for Environmental Works



CHINA HARBOUR ENGINEERING COMPANY LIMITED

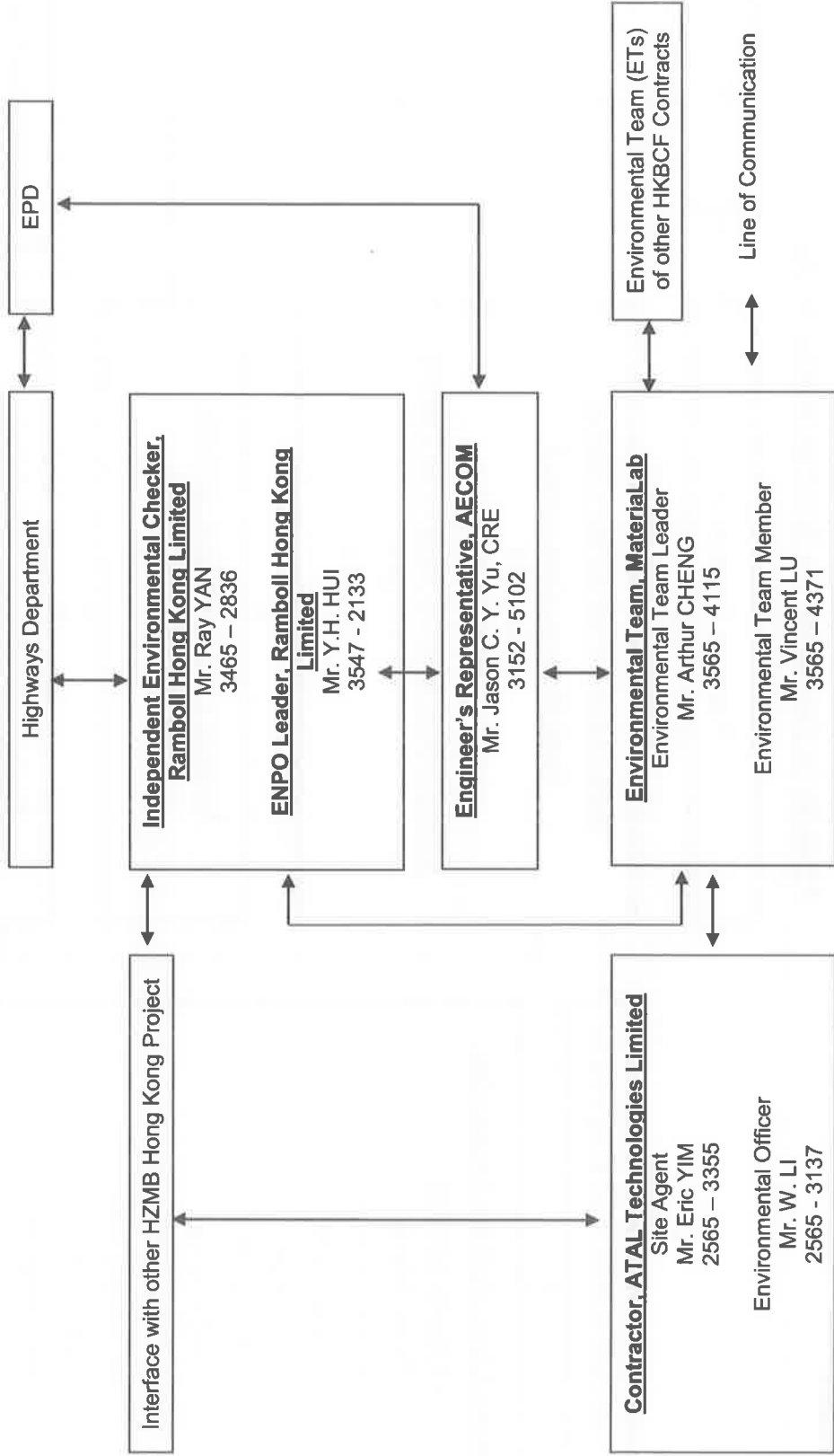
Contract No. HY/2013/03 Hong Kong-Zhuhai-Macao Bridge, Hong Kong Boundary Crossing Facilities – Vehicle Clearance Plazas and Ancillary Buildings and Facilities

Projects Organization for Environmental Works



Contract No. HY/2013/06 (within Contract No. HY/2013/03 works area)
 Hong Kong-Zhuhai-Macao Bridge, Hong Kong Boundary Crossing Facilities – Automatic Vehicle Clearance Support System

Projects Organization for Environmental Works



MATERIALAB CONSULTANTS LIMITED

Room 723 & 725, 7/F, Block B,
Profit Industrial Building,
1-15 Kwai Fung Crescent, Kwai Fong,
Hong Kong.

Tel : (852)-24508238
Fax : (852)-24508032
Email : mcl@fugro.com



Report No.: 0165/15/ED/1156

Appendix C

Event / Action Plan

Appendix C –

Event / Action Plan for Air Quality and Noise Monitoring

Event / Action Plan for Air Quality

Event	Action			
	ET	IEC	ER	Contractor
Action Level				
1. Exceedance for one sample	1. Identify source, investigate the causes of exceedance and propose remedial measures; 2. Inform IEC and ER; 3. Repeat measurement to confirm finding; 4. Increase monitoring frequency to daily.	1. Check monitoring data submitted by ET; 2. Check Contractor's working method.	1. Notify Contractor.	1. Rectify any unacceptable practice; 2. Amend working methods if appropriate.

Event	Action			
	ET	IEC	ER	Contractor
2. Exceedance for two or more consecutive samples	<ol style="list-style-type: none"> 1. Identify source; 2. Inform IEC and ER; 3. Advise the ER on the effectiveness of the proposed remedial measures; 4. Repeat measurements to confirm findings; 5. Increase monitoring frequency to daily; 6. Discuss with IEC and Contractor on remedial actions required; 7. If exceedance continues, arrange meeting with IEC and ER; 8. If exceedance stops, cease additional monitoring. 	<ol style="list-style-type: none"> 1. Check monitoring data submitted by ET; 2. Check Contractor's working method; 3. Discuss with ET and Contractor on possible remedial measures; 4. Advise the ER on the effectiveness of the proposed remedial measures; 5. Supervise Implementation of remedial measures. 	<ol style="list-style-type: none"> 1. Confirm receipt of notification of failure in writing; 2. Notify Contractor; 3. Ensure remedial measures properly implemented. 	<ol style="list-style-type: none"> 1. Submit proposals for remedial to ER within 3 working days of notification; 2. Implement the agreed proposals; 3. Amend proposal if appropriate.

Event	Action			
	ET	IEC	ER	Contractor
Limit Level				
1. Exceedance for one sample	1. Identify source, investigate the causes of exceedance and propose remedial measures; 2. Inform ER, Contractor and EPD; 3. Repeat measurement to confirm finding; 4. Increase monitoring frequency to daily; 5. Assess effectiveness of Contractor's remedial actions and keep IEC, EPD and ER informed of the results.	1. Check monitoring data submitted by ET; 2. Check Contractor's working method; 3. Discuss with ET and Contractor on possible remedial measures; 4. Advise the ER on the effectiveness of the proposed remedial measures; 5. Supervise implementation of remedial measures.	1. Confirm receipt of notification of failure in writing; 2. Notify Contractor; 3. Ensure remedial measures properly implemented.	1. Take immediate action to avoid further exceedance; 2. Submit proposals for remedial actions to IEC within 3 working days of notification; 3. Implement the agreed proposals; 4. Amend proposal if appropriate.

Event	Action			
	ET	IEC	ER	Contractor
2. Exceedance for two or more consecutive samples	<ol style="list-style-type: none"> 1. Notify IEC, ER, Contractor and EPD; 2. Identify source; 3. Repeat measurement to confirm findings; 4. Increase monitoring frequency to daily; 5. Carry out analysis of Contractor's working procedures to determine possible mitigation to be implemented; 6. Arrange meeting with IEC and ER to discuss the remedial actions to be taken; 7. Assess effectiveness of Contractor's remedial actions and keep IEC, EPD and ER informed of the results; 8. If exceedance stops, cease additional monitoring. 	<ol style="list-style-type: none"> 1. Discuss amongst ER, ET, and Contractor on the potential remedial actions; 2. Review Contractor's remedial actions whenever necessary to assure their effectiveness and advise the ER accordingly; 3. Supervise the implementation of remedial measures. 	<ol style="list-style-type: none"> 1. Confirm receipt of notification of failure in writing; 2. Notify Contractor; 3. In consultation with the IEC, agree with the Contractor on the remedial measures to be implemented; 4. Ensure remedial measures properly implemented; 5. If exceedance continues, consider what portion of the work is responsible and instruct the Contractor to stop that portion of work until the exceedance is abated. 	<ol style="list-style-type: none"> 1. Take immediate action to avoid further exceedance; 2. Submit proposals for remedial actions to IEC within 3 working days of notification; 3. Implement the agreed proposals; 4. Resubmit proposals if problem still not under control; 5. Stop the relevant portion of works as determined by the ER until the exceedances abated.

Event / Action Plan for Construction Noise Monitoring

Event	Action			
	ET	IEC	ER	Contractor
Action Level	<ol style="list-style-type: none"> 1. Notify IEC and Contractor; 2. Identify source, investigate the causes of exceedance and propose remedial measures; 3. Report the results of investigation to the IEC, ER and Contractor; 4. Discuss with the Contractor and formulate remedial measures; 5. Increase monitoring frequency to check mitigation effectiveness. 	<ol style="list-style-type: none"> 1. Review the analysed results submitted by the ET; 2. Review the proposed remedial measures by the Contractor and advise the ER accordingly; 3. Supervise the implementation of remedial measures. 	<ol style="list-style-type: none"> 1. Confirm receipt of notification of failure in writing; 2. Notify Contractor; 3. Require Contractor to propose remedial measures for the analysed noise problem; 4. Ensure remedial measures are properly implemented. 	<ol style="list-style-type: none"> 1. Submit noise mitigation proposals to IEC; 2. Implement noise mitigation proposals.

Event	Action			
	ET	IEC	ER	Contractor
Limit Level	<ol style="list-style-type: none"> 1. Inform IEC, ER, EPD and Contractor; 2. Identify source; 3. Repeat measurements to confirm findings; 4. Increase monitoring frequency; 5. Carry out analysis of Contractor's working procedures to determine possible mitigation to be implemented; 6. Inform IEC, ER and EPD the causes and actions taken for the exceedances; 7. Assess effectiveness of Contractor's remedial actions and keep IEC, EPD and ER informed of the results; 8. If exceedance stops, cease additional monitoring. 	<ol style="list-style-type: none"> 1. Discuss amongst ER, ET, and Contractor on the potential remedial actions; 2. Review Contractor's remedial actions whenever necessary to assure their effectiveness and advise the ER accordingly; 3. Supervise the implementation of remedial measures. 	<ol style="list-style-type: none"> 1. Confirm receipt of notification of failure in writing; 2. Notify Contractor; 3. Require Contractor to propose remedial measures for the analysed noise problem; 4. Ensure remedial measures properly implemented; 5. If exceedance continues, consider what portion of the work is responsible and instruct the Contractor to stop that portion of work until the exceedance is abated. 	<ol style="list-style-type: none"> 1. Take immediate action to avoid further exceedance; 2. Submit proposals for remedial actions to IEC within 3 working days of notification; 3. Implement the agreed proposals; 4. Resubmit proposals if problem still not under control; 5. Stop the relevant portion of works as determined by the ER until the exceedance is abated.

MATERIALAB CONSULTANTS LIMITED

Room 723 & 725, 7/F, Block B,
Profit Industrial Building,
1-15 Kwai Fung Crescent, Kwai Fong,
Hong Kong.

Tel : (852)-24508238
Fax : (852)-24508032
Email : mcl@fugro.com

The logo for MaterialLab, featuring the word "MaterialLab" in a bold, sans-serif font. The text is contained within a rectangular frame that has a thick top border and a thick bottom border, with the middle section being open.

Report No.: 0165/15/ED/1156

Appendix D

Waste Flow Table



Monthly Summary of Waste Flow Table for 2019 (year)

Name of Person completing the Record: **Marko Chan**

Month	Actual Quantities of Inert C&D Materials Generated Monthly					Actual Quantities of Non-inert C&D Wastes Generated Monthly				
	Total Quantity Generated (in '000m ³)	Broken Concrete (see Note 1) (in '000m ³)	Reused in the Contract (in '000m ³)	Reused in other Projects (in '000m ³)	Disposed as Public Fill (in '000m ³)	Metals (in '000 Kg)	Paper/ cardboard packaging (in '000 Kg)	Plastics (see Note 2) (in '000 Kg)	Chemical Waste (in '000 Kg)	Others, e.g. general refuse (in '000m ³)
Jan	0	0	0	0	0	0	0	0	0	0
Feb										
Mar										
Apr										
May										
Jun										
Jul										
Aug										
Sept										
Oct										
Nov										
Dec										
Total	0.000	0.000	0.000	0.000	0.000	0.000	0.000	0.000	0.000	0.000

Notes:

- (1) Broken concrete for recycling into aggregates.
- (2) Plastics refer to plastic bottles/containers, plastic sheets/foam from packaging material.

ATAL Technologies Ltd.
 Contract: HY/2013/06 HKBCF- Automatic Vehicle Clearance Support System
 Location: Artificial Island of HKBCF (C3 Area)

Monthly Summary Waste Flow Table for 2019

Month	Inert C&D Waste disposal / 鹽性廢物 (in tonnes) (see Note 1)				Non-inert C&D Waste disposal 非鹽性廢物 (in tonnes)				Waste to be recycled and returned / 可再循環利用或回收的廢物								Total Quantity Generated 總生產量	
	Reused in the Work Package (e.g. backfilling) 再用於工程 (如回填)		Reused in other Projects 再用於其他工程		Inert Waste (e.g. soil, broken concrete, rubble, fill material etc.) 鹽性廢物 (如泥, 石, 磚, 瓦, 石, 填料等)		Others (e.g. general refuse, broken formwork etc.) 其他 (如垃圾, 廢板枋等)		Metals 金屬		Plastic 塑膠		Paper/cardboard packaging 廢紙/包裝紙類		Chemical Waste 化學廢物		Est. Qty. 估計數量	Act. Qty. 實際數量
	Est. Qty. 估計數量	Act. Qty. 實際數量	Est. Qty. 估計數量	Act. Qty. 實際數量	Est. Qty. 估計數量	Act. Qty. 實際數量	Est. Qty. 估計數量	Act. Qty. 實際數量	Est. Qty. 估計數量	Act. Qty. 實際數量	Est. Qty. 估計數量	Act. Qty. 實際數量	Est. Qty. 估計數量	Act. Qty. 實際數量	Est. Qty. 估計數量	Act. Qty. 實際數量		
January	0.000	0.000	0.000	0.000	0.000	0.000	0.000	0.000	0.000	0.000	0.000	0.000	0.000	0.000	0.000	0.000	0.000	0.000
February																		
March																		
April																		
May																		
June																		
July																		
August																		
September																		
October																		
November																		
December																		
Total	0.000	0.000	0.000	0.000	0.000	0.000	0.000	0.000	0.000	0.000	0.000	0.000	0.000	0.000	0.000	0.000	0.000	0.000

 Notes: (1) The quantities of C&D Materials, in tonne, was calculated by multiply the estimated volume, in m³, with the density of the soil, which is 1.5 gcm⁻³.

MATERIALAB CONSULTANTS LIMITED

Room 723 & 725, 7/F, Block B,
Profit Industrial Building,
1-15 Kwai Fung Crescent, Kwai Fong,
Hong Kong.

Tel : (852)-24508238
Fax : (852)-24508032
Email : mcl@fugro.com



Report No.: 0165/15/ED/1156

Appendix E

Environmental Licenses and Permits

Environmental Permit / Licences Summary for Contract No. HY/2013/03

(update: 07/11/2018)

Item	Permit/Licence Registration	Permit No.	Work Area	Application Date	Issue Date	Valid Date		Status	Remark
						From	To		
1	Environmental Permit Pursuant to Environmental Impact Assessment Ordinance	EP-353/2009/H	HKBCF	16-Jan-15	19 Jan 15	19 Jan 15	Nil	Superseded	
2	Notification Pursuant to Section 3(1) of The Air Pollution Control (Construction Dust) Regulation	Ref No. 387703	Main Site Area	15-Apr-15	15-Apr-15	15-Apr-15	Nil	Valid	
3	Notification Pursuant to Section 3(1) of The Air Pollution Control (Construction Dust) Regulation	Ref No. 387735	Works Area WA3	15-Apr-15	15-Apr-15	15-Apr-15	Nil	Valid	
4	Billing A/C for Construction Waste Disposal Pursuant to Section 6 & 9 of the Waste Disposal (Charges for Disposal of Construction waste) Regulation	A/C No. 7022228	Main Site Area, WA3 & 4	15-Apr-15	06-May-15	06-May-15	Nil	Valid	
5	Construction Noise Permit Pursuant to Section 8(6) of the Noise Control Ordinance	GW-RS0477-15	Works Area WA3	20-Apr-15	04-May-15	18-May-15	17-Nov-15	Expired	
6	Registration as Waste Producer Pursuant to Waste Disposal (Chemical Waste) (General) Regulation	5213-951-C1186-28	Main Site Area	28-Apr-15	01-Jun-15	01-Jun-15	Nil	Valid	
7	Registration as Waste Producer Pursuant to Waste Disposal (Chemical Waste) (General) Regulation	5213-974-C3597-03	Works Area WA4	28-Apr-15	01-Jun-15	01-Jun-15	Nil	Valid	
8	Water Discharge License Pursuant to Water Pollution Control Ordinance (Cap 358)	WT00022180-2015	Works Area WA3	29-Apr-15	04-Aug-15	03-Aug-15	31-Aug-20	Valid	
9	Water Discharge License Pursuant to Water Pollution Control Ordinance (Cap 358)	WT00022391-2015	Main Site Area	06-May-15	04-Sep-15	04-Sep-15	30-Sep-20	Superseded	
10	Construction Noise Permit Pursuant to Section 8(6) of the Noise Control Ordinance	GW-RS0566-15	Box Culvert D	08-May-15	22-May-15	08-Jun-15	07-Nov-15	Expired	
11	Construction Noise Permit Pursuant to Section 8(6) of the Noise Control Ordinance	GW-RS0674-15	CUE	05-Jun-15	19-Jun-15	19-Jun-15	18-Aug-15	Expired	
12	Environmental Permit Pursuant to Environmental Impact Assessment Ordinance	EP-353/2009/I	HKBCF	30-Jun-15	17-Jul-15	17-Jul-15	Nil	Superseded	
13	Construction Noise Permit Pursuant to Section 8(6) of the Noise Control Ordinance	PP-RS0020-15	Drill Tower	06-Jul-15	20-Jul-15	01-Aug-15	30-Nov-15	Expired	
14	Construction Noise Permit Pursuant to Section 8(6) of the Noise Control Ordinance	GW-RS0999-15	CUE	28-Aug-15	11-Sep-15	14-Sep-15	10-Dec-15	Superseded	
15	Construction Noise Permit Pursuant to Section 8(6) of the Noise Control Ordinance	GW-RS1065-15	Portion A1	15-Sept-15	29-Sep-15	30-Sep-15	31-Dec-15	Superseded	

16	Construction Noise Permit Pursuant to Section 8(6) of the Noise Control Ordinance	GW-RS1203-15	CUE	20-Oct-15	03-Nov-15	02-Nov-15	31-Jan-16	Superseded
17	Permit issued Under the Dumping at Sea Ordinance	EP/MD/16-121	South of Brothers (CMP2)	26-Oct-15	17-Dec-15	18-Dec-15	17-Jan-16	Expired
18	Construction Noise Permit Pursuant to Section 8(6) of the Noise Control Ordinance	GW-RS1315-15	Portion G	12-Nov-15	26-Nov-15	28-Nov-15	28-Feb-16	Expired
19	Construction Noise Permit Pursuant to Section 8(6) of the Noise Control Ordinance	PP-RS0029-15	Drill Tower	27-Nov-15	11-Dec-15	14-Dec-15	13-Apr-16	Expired
20	Construction Noise Permit Pursuant to Section 8(6) of the Noise Control Ordinance	GW-RS1388-15	Main Site Area	27-Nov-15	16-Dec-15	21-Dec-15	18-Mar-16	Superseded
21	Construction Noise Permit Pursuant to Section 8(6) of the Noise Control Ordinance	GW-RS0035-16	Main Site Area	31-Dec-15	14-Jan-16	18-Jan-16	17-Mar-16	Superseded
22	Permit issued Under the Dumping at Sea Ordinance	EP/MD/16-161	South of Brothers (CMP2)	31-Dec-15	15-Jan-16	20-Jan-16	19-Feb-16	Expired
23	Permit issued Under the Dumping at Sea Ordinance	EP/MD/16-177	South of Brothers (CMP2)	26-Jan-16	11-Feb-16	20-Feb-16	19-Mar-16	Expired
24	Environmental Permit Pursuant to Environmental Impact Assessment Ordinance	EP-353/2009/J	HKBCF	18-Feb-16	25-Feb-16	25-Feb-16	Nil	Superseded
25	Construction Noise Permit Pursuant to Section 8(6) of the Noise Control Ordinance	PP-RS0009-16	Portion G	02-Mar-16	16-Mar-16	21-Mar-16	20-Jul-16	Expired
26	Construction Noise Permit Pursuant to Section 8(6) of the Noise Control Ordinance	GW-RS0244-16	Main Site Area	03-Mar-16	17-Mar-16	18-Mar-16	18-Jun-16	Expired
27	Construction Noise Permit Pursuant to Section 8(6) of the Noise Control Ordinance	GW-RS0249-16	Main Site Area	03-Mar-16	17-Mar-16	19-Mar-16	18-Jun-16	Superseded
28	Construction Noise Permit Pursuant to Section 8(6) of the Noise Control Ordinance	GW-RS0269-16	Floating Concrete Batching Plant	03-Mar-16	17-Mar-16	19-Mar-16	18-Jun-16	Superseded
29	Permit issued Under the Dumping at Sea Ordinance	EP/MD/16-202	East of Sha Chau (CMP Vd)	09-Mar-16	18-Mar-16	24-Mar-16	23-Apr-16	Expired
30	Environmental Permit Pursuant to Environmental Impact Assessment Ordinance	EP-353/2009/K	HKBCF	24-Mar-16	11-Apr-16	11-Apr-16	Nil	Valid
31	Construction Noise Permit Pursuant to Section 8(6) of the Noise Control Ordinance	GW-RS0348-16	Main Site Area	29-Mar-16	12-Apr-16	15-Apr-16	14-Jul-16	Superseded
32	Permit issued Under the Dumping at Sea Ordinance	EP/MD/17-007	East of Sha Chau (CMP Vd)	08-Apr-16	19-Apr-16	24-Apr-16	23-May-16	Expired
33	Permit issued Under the Dumping at Sea Ordinance	EP/MD/17-029	East of Sha Chau (CMP Vd)	09-May-16	19-May-16	24-May-16	23-Jun-16	Expired

34	Permit issued Under the Dumping at Sea Ordinance	EP/MD/17-040	East of Sha Chau (CMP Vd)	31-May-16	13-Jun-16	14-Jun-16	13-Jul-16	Expired
35	Construction Noise Permit Pursuant to Section 8(6) of the Noise Control Ordinance	GW-RS0607-16	Main Site Area	02-Jun-16	16-Jun-16	19-Jun-16	18-Sep-16	Superseded
36	Construction Noise Permit Pursuant to Section 8(6) of the Noise Control Ordinance	GW-RS0629-16	Floating Concrete Batching Plant	02-Jun-16	16-Jun-16	19-Jun-16	18-Dec-16	Superseded
37	Construction Noise Permit Pursuant to Section 8(6) of the Noise Control Ordinance	GW-RS0639-16	Main Site Area	02-Jun-16	16-Jun-16	15-Jul-16	14-Oct-16	Superseded
38	Permit issued Under the Dumping at Sea Ordinance	EP/MD/17-062	East of Sha Chau (CMP Vd)	30-Jun-16	12-Jul-16	14-Jul-16	13-Aug-16	Expired
39	Construction Noise Permit Pursuant to Section 8(6) of the Noise Control Ordinance	PP-RS0020-16	Portion A, G & H	13-Jul-16	27-Jul-16	28-Jul-16	24-Jan-17	Superseded
40	Permit issued Under the Dumping at Sea Ordinance	EP/MD/17-075	East of Sha Chau (CMP Vd)	27-Jul-16	05-Aug-16	14-Aug-16	31-Aug-16	Expired
41	Permit issued Under the Dumping at Sea Ordinance	EP/MD/17-088	East of Sha Chau (CMP Vd)	16-Aug-16	26-Aug-16	01-Sep-16	30-Sep-16	Expired
42	Construction Noise Permit Pursuant to Section 8(6) of the Noise Control Ordinance	GW-RS0933-16	Main Site Area	18-Aug-16	01-Sep-16	05-Sep-16	31-Dec-16	Expired
43	Construction Noise Permit Pursuant to Section 8(6) of the Noise Control Ordinance	GW-RS0960-16	Main Site Area	06-Sep-16	15-Sep-16	19-Sep-16	18-Dec-16	Expired
44	Permit issued Under the Dumping at Sea Ordinance	EP/MD/17-105	East of Sha Chau (CMP Vd)	15-Sep-16	27-Sep-16	01-Oct-16	31-Oct-16	Expired
45	Construction Noise Permit Pursuant to Section 8(6) of the Noise Control Ordinance	PP-RS0028-16	Portion A, G, H & N	15-Sep-16	29-Sep-16	03-Oct-16	02-Apr-17	Expired
46	Water Discharge License Pursuant to Water Pollution Control Ordinance (Cap 358)	WT00025384-2016	Main Site Area	09-Mar-16	10-Nov-16	10-Nov-16	30-Sep-20	Valid
47	Permit issued Under the Dumping at Sea Ordinance	EP/MD/17-132	East of Sha Chau (CMP Vd)	03-Nov-16	30-Nov-16	05-Dec-16	04-Jan-17	Expired
48	Permit issued Under the Dumping at Sea Ordinance	EP/MD/17-140	East of Sha Chau (CMP Va) or South of Brothers (CMP2)	14-Nov-16	30-Nov-16	30-Nov-16	29-Dec-16	Expired
49	Permit issued Under the Dumping at Sea Ordinance	EP/MD/17-146	East of Sha Chau (CMP Va) or South of Brothers (CMP2)	28-Nov-16	16-Dec-16	16-Dec-16	29-Dec-16	Expired
50	Construction Noise Permit	GW-RS1267-16	Main Site Area	02-Dec-16	16-Dec-16	19-Dec-16	18-Mar-17	Expired

69	Construction Noise Permit Pursuant to Section 8(6) of the Noise Control Ordinance	GW-RS0271-18	Main Site Area	15-Mar-18	29-Mar-18	13-Apr-18	12-Oct-18	Expired
70	Construction Noise Permit Pursuant to Section 8(6) of the Noise Control Ordinance	GW-RS0888-18	Main Site Area	15-Sep-18	02-Oct-18	13-Oct-18	12-Apr-19	Valid

Environmental License/ Permits /Notification Register

LCAL H2642

Contract: HY/2013/06 – Hong Kong Zhuhai and Macao Bridge - HKBCF – Automatic Vehicle Clearance Support System

Item No.	Permit/License or Registration Application		Permit/License/ Notification/ Registration Description	Permit/License/ Registration Number	Issue/Start Date	Expiry Date	Issuing Office	Remark	
	Work Area	Date							Reference
	1	HZMB-HK Boundary Crossing Facilities							31 July 2015

Date: 31 October 2018

MATERIALAB CONSULTANTS LIMITED

Room 723 & 725, 7/F, Block B,
Profit Industrial Building,
1-15 Kwai Fung Crescent, Kwai Fong,
Hong Kong.

Tel : (852)-24508238
Fax : (852)-24508032
Email : mcl@fugro.com

MaterialLab

Report No.: 0165/15/ED/1156

Appendix F

Implementation Schedule for Environmental Mitigation Measures (EMIS)

MATERIALAB CONSULTANTS LIMITED

Room 723 & 725, 7/F, Block B,
Profit Industrial Building,
1-15 Kwai Fung Crescent, Kwai Fong,
Hong Kong.

Tel : (852)-24508238
Fax : (852)-24508032
Email : mcl@fugro.com



Report No.: 0165/15/ED/1156

Appendix F – Implementation Schedule of Environmental Mitigation Measures (EMIS)

EIA Ref.	EM&A Log Ref.	Recommended Mitigation Measures	Location of the measures	Implementation Status
Air Quality				
S5.5.6.1	A1	1) The contractor shall follow the procedures and requirements given in the Air Pollution Control (Construction Dust) Regulation	All construction sites	V
S5.5.6.2	A2	2) Proper watering of exposed spoil should be undertaken throughout the construction phase: <ul style="list-style-type: none"> • Any excavated or stockpile of dusty material should be covered entirely by impervious sheeting or sprayed with water to maintain the entire surface wet and then removed or backfilled or reinstated where practicable within 24 hours of the excavation or unloading; • Any dusty materials remaining after a stockpile is removed should be wetted with water and cleared from the surface of roads; • A stockpile of dusty material should not be extend beyond the pedestrian barriers, fencing or traffic cones. • The load of dusty materials on a vehicle leaving a construction site should be covered entirely by impervious sheeting to ensure that the dusty materials do not leak from the vehicle; • Where practicable, vehicle washing facilities with high pressure water jet should be provided at every discernible or designated vehicle exit point. The area where vehicle washing takes place and the road section between the washing facilities and the exit point should be paved with concrete, bituminous materials or hardcores; 	All construction sites	V
S5.5.6.2	A2	<ul style="list-style-type: none"> • When there are open excavation and reinstatement works, hoarding of not less than 2.4m high should be provided as far as practicable along the site boundary with provision for public crossing. Good site practice shall also be adopted by the Contractor to ensure the conditions of the hoardings are properly maintained throughout the construction period; • The portion of any road leading only to construction site that is within 30m of a vehicle entrance or exit should be kept clear of dusty materials, • Surfaces where any pneumatic or power-driven drilling, cutting, polishing or other mechanical breaking operation takes place should be sprayed with water or a dust suppression chemical continuously; • Any area that involves demolition activities should be sprayed with water or a dust suppression chemical immediately prior to, during and immediately after the activities so as to maintain the entire surface wet; • Where a scaffolding is erected around the perimeter of a building under construction, effective dust screens, sheeting or netting should be provided to enclose the scaffolding from the ground floor level of the building, or a canopy should be provided from the first floor level up to the highest level of the scaffolding; • Any skip hoist for material transport should be totally enclosed by impervious sheeting; • Every stock of more than 20 bags of cement or dry pulverised fuel ash (PFA) should be covered entirely by impervious sheeting or placed in an area sheltered on the top 	All construction sites	V
S5.5.6.2	A2	<ul style="list-style-type: none"> • Cement or dry PFA delivered in bulk should be stored in a closed silo fitted with an audible high 	All construction sites	N/A

MATERIALAB CONSULTANTS LIMITED

Room 723 & 725, 7/F, Block B,
Profit Industrial Building,
1-15 Kwai Fung Crescent, Kwai Fong,
Hong Kong.

Tel : (852)-24508238
Fax : (852)-24508032
Email : mcl@fugro.com

MaterialLab

Report No.: 0165/15/ED/1156

EIA Ref.	EM&A Log Ref.	Recommended Mitigation Measures	Location of the measures	Implementation Status
		<p>level alarm which is interlocked with the material filling line and no overfilling is allowed;</p> <ul style="list-style-type: none"> • Loading, unloading, transfer, handling or storage of bulk cement or dry PFA should be carried out in a totally enclosed system or facility, and any vent or exhaust should be fitted with an effective fabric filter or equivalent air pollution control system; and • Exposed earth should be properly treated by compaction, turfing, hydroseeding, vegetation planting or sealing with latex, vinyl, bitumen, shotcrete or other suitable surface stabiliser within six months after the last construction activity on the construction site r part of the construction site where the exposed earth lies 		
S5.5.6.3	A3	3) The Contractor should undertake proper watering on all exposed spoil (with at least 8 times per day) throughout the construction phase.	All construction sites	V
S5.5.6.4	A4	4) Engineer to incorporate the controlled measures into the Particular Specification (PS) for the civil work. The PS should also draw the contractor's attention to the relevant latest Practice Notes issued by EPD.	All construction sites	V
S5.5.6.4	A5	5) Implement regular dust monitoring under EM&A programme during the construction stage.	Selected Representative dust monitoring station	V (Conducted by Contract No. HY/2013/04 and HY/2011/03)
S5.5.7.1	A6	<p>The following mitigation measures should be adopted to prevent fugitive dust emissions for concrete batching plant;</p> <ul style="list-style-type: none"> • Loading, unloading, handling, transfer or storage of any dusty materials should be carried out in totally enclosed system; • All dust-laden air or waste gas generated by the process operations should be properly extracted and vented to fabric filtering system to meet the emission limits for TSP; • Vents for all silos and cement/pulverised fuel ash (PFA) weighing scale should be fitted with fabric filtering system; • The materials which may generate airborne dusty emissions should be wetted by water spray system; • All receiving hoppers should be enclosed on three sides up to 3m above unloading point; • All conveyor transfer points should be totally enclosed; • All access and route roads within the premises should be paved and wetted; and • Vehicle cleaning facilities should be provided and used by all concrete trucks before leaving the premises to wash off any dust on the wheels and/or body 	Selected Representative dust monitoring station	N/A
S5.5.2.7	A7	<p>The following mitigation measures should be adopted to prevent fugitive dust emissions at barging point:</p> <ul style="list-style-type: none"> • All road surface within the barging facilities will be paved; • Dust enclosures will be provided for the loading ramp; • Vehicles will be required to pass through designated wheels wash facilities; and • Continuous water spray at the loading points 	All construction sites	V
Construction Noise (Air borne)				
S6.4.10	N1	<p>1) Use of good site practices to limit noise emissions by considering the following:</p> <ul style="list-style-type: none"> • only well-maintained plant should be operated on-site and plant should be serviced regularly during 	All construction sites	V

MATERIALAB CONSULTANTS LIMITED

Room 723 & 725, 7/F, Block B,
Profit Industrial Building,
1-15 Kwai Fung Crescent, Kwai Fong,
Hong Kong.

Tel : (852)-24508238
Fax : (852)-24508032
Email : mcl@fugro.com

MaterialLab

Report No.: 0165/15/ED/1156

EIA Ref.	EM&A Log Ref.	Recommended Mitigation Measures	Location of the measures	Implementation Status
		<p>the construction programme;</p> <ul style="list-style-type: none"> • machines and plant (such as trucks, cranes) that may be in intermittent use should be shut down between work periods or should be throttled down to a minimum; • plant known to emit noise strongly in one direction, where possible, be orientated so that the noise is directed away from nearby NSRs; • silencers or mufflers on construction equipment should be properly fitted and maintained during the construction works; • mobile plant should be sited as far away from NSRs as possible and practicable; • material stockpiles, mobile container site office and other structures should be effectively utilised, where practicable, to screen noise from on-site construction activities. 		
S6.4.11	N2	2) Install temporary hoarding located on the site boundaries between noisy construction activities and NSRs. The conditions of the hoardings shall be properly maintained throughout the construction period.	All construction sites	V
S6.4.12	N3	3) Install movable noise barriers (typically density@14kg/m acoustic mat or full enclosure close to noisy plants including compressor, generators, saw.	For plant items listed in Appendix 6D of the EIA report at all construction sites	N/A
S6.4.13	N4	4) Select "Quiet plants" which comply with the BS 5228 Part 1 or TM standards.	For plant items listed in Appendix 6D of the EIA report at all construction site	V
S6.4.14	N5	5) Sequencing operation of construction plants where practicable	All construction sites where practicable	V
S5.1	N6	6) Implement a noise monitoring under EM&A programme.	Selected representative noise monitoring station	V (Conducted by Contract No. HY/2013/04)
Sediment				
S7.3	S1	1) The requirements as recommended in ETWB TC 34/2002 Management of Dredged/Excavated Sediment shall be included in the Particular Specification as appropriate.	All construction sites	V
Waste Management (Construction Waste)				
S8.3.8	WM1	<p>Construction and Demolition Material</p> <p>The following mitigation measures should be implemented in handling the waste:</p> <ul style="list-style-type: none"> • Maintain temporary stockpiles and reuse excavated fill material for backfilling and reinstatement; • Carry out on-site sorting; • Make provisions in the Contract documents to allow and promote the use of recycled aggregates where appropriate; • Implement a trip-ticket system for each works contract to ensure that the disposal of C&D materials are properly documented and verified; and • Implement an enhanced Waste Management Plan similar to E7WBTC (Works) No. 19/2005 - "Environmental Management on Construction Sites" to encourage on-site sorting of C&D 	All construction sites	V

MATERIALAB CONSULTANTS LIMITED

Room 723 & 725, 7/F, Block B,
Profit Industrial Building,
1-15 Kwai Fung Crescent, Kwai Fong,
Hong Kong.

Tel : (852)-24508238
Fax : (852)-24508032
Email : mcl@fugro.com

MaterialLab

Report No.: 0165/15/ED/1156

EIA Ref.	EM&A Log Ref.	Recommended Mitigation Measures	Location of the measures	Implementation Status
		<p>materials and to minimize their generation during the course of construction.</p> <ul style="list-style-type: none"> In addition, disposal of the C&D materials onto any sensitive locations such as agricultural lands, etc. should be avoided. The Contractor shall propose the final disposal sites to the Project Proponent and get its approval before implementation 		
S8.3.9- S8.3.11	WM2	<p><u>C&D Waste</u></p> <ul style="list-style-type: none"> Standard formwork or pre-fabrication should be used as far as practicable in order to minimise the arising of C&D materials. The use of more durable formwork or plastic facing for the construction works should be considered. Use of wooden hoardings should not be used, as in other projects. Metal hoarding should be used to enhance the possibility of recycling. The purchasing of construction materials will be carefully planned in order to avoid over ordering and wastage. The Contractor should recycle as much of the C&D materials as possible on-site. Public fill and C&D waste should be segregated and stored in different containers or skips to enhance reuse or recycling of materials and their proper disposal. Where practicable, concrete and masonry can be crushed and used as fill. Steel reinforcement bar can be used by scrap steel mills. Different areas of the sites should be considered for such segregation and storage. 	All construction sites	V
S8.2.12- S8.3.15	WM3	<p><u>Chemical Waste</u></p> <ul style="list-style-type: none"> Chemical waste that is produced, as defined by Schedule 1 of the Waste Disposal (Chemical Waste) (General) Regulation, should be handled in accordance with the Code of Practice on the Packaging, Labelling and Storage of Chemical Wastes. Containers used for the storage of chemical wastes should be suitable for the substance they are holding, resistant to corrosion, maintained in a good condition, and securely closed; have a capacity of less than 450 liters unless the specification has been approved by the EPD; and display a label in English and Chinese in accordance with instructions prescribed in Schedule 2 of the regulation. The storage area for chemical wastes should be clearly labeled and used solely for the storage of chemical waste; enclosed on at least 3 sides; have an impermeable floor and bunding of sufficient capacity to accommodate 110% of the volume of the largest container or 20 % of the total volume of waste stored in that area, whichever is the greatest; have adequate ventilation; covered to prevent rainfall entering; and arranged so that incompatible materials are adequately separated. Disposal of chemical waste should be via a licensed waste collector; be to a facility licensed to receive chemical waste, such as the Chemical Waste Treatment Centre which also offers chemical waste collection service and can supply the necessary storage containers; or be to a reuser of the waste, under approval from the EPD. 	All construction sites	V
S8.3.16	WM4	<p><u>Sewage</u></p> <ul style="list-style-type: none"> Adequate numbers of portable toilets should be provided for the workers. The portable toilets should be maintained in a state which will not deter the workers from utilizing these portable 	All construction sites	V

MATERIALAB CONSULTANTS LIMITED

Room 723 & 725, 7/F, Block B,
Profit Industrial Building,
1-15 Kwai Fung Crescent, Kwai Fong,
Hong Kong.

Tel : (852)-24508238
Fax : (852)-24508032
Email : mcl@fugro.com



Report No.: 0165/15/ED/1156

EIA Ref.	EM&A Log Ref.	Recommended Mitigation Measures	Location of the measures	Implementation Status
		toilets. Night soil should be collected by licensed collectors regularly.		
S8.3.17	WM5	<p>General Refuse</p> <ul style="list-style-type: none"> General refuse generated on-site should be stored in enclosed bins or compaction units separately from construction and chemical wastes. A reputable waste collector should be employed by the Contractor to remove general refuse from the site, separately from construction and chemical wastes, on a daily basis to minimize odour, pest and litter impacts. Burning of refuse on construction sites is prohibited by law. Aluminium cans are often recovered from the waste stream by individual collectors if they are segregated and made easily accessible. Separate labelled bins for their deposit should be provided if feasible. Office wastes can be reduced through the recycling of paper if volumes are large enough to warrant collection. Participation in a local collection scheme should be considered by the Contractor. Training should be provided to workers about the concepts of site cleanliness and appropriate waste management procedure, including reduction, reuse and recycling of wastes. 	All construction sites	V
Water Quality (Construction Phase)				
S9.11.1.1- S9.11.1.2	W1	<ul style="list-style-type: none"> Mitigation during the marine works to reduce impacts to within acceptable levels have been recommended and will comprise a series of measures that restrict the method and sequencing of dredging/backfilling, as well as protection measures. Details of the measures are provided below and summarised in the Environmental Mitigation Implementation Schedule in EM&A Manual Construction of seawalls to be advanced by at least 100-200m before the main reclamation dredging and filling can commence. It should be noted that the protection by advanced seawall is a dynamic process depending on the progress of the construction activities and the stage when such protection could be realised is illustrated in Figure 9.2 and detailed in Appendix 9D6 of the EIA Report. The part of the works where such measures can be undertaken for the majority of the time includes the following locations: <ul style="list-style-type: none"> TMCLKL northern reclamation; TMCLKL southern reclamation (after formation of the nips); Reclamation dredging and filling for Portion B of HKBCF; Reclamation filling for Portion C of HKBCF; Reclamation filling for Portion D of HKBCF; Reclamation filling for FSD berth of HKBCF; and Reclamation dredging and filling for Portion 1 of HKLR; Export for dredged spoils from NWWCZ avoiding exerting high demand on the disposal facilities in the NWWCZ and, hence, minimise potential cumulative impacts; For the marine viaducts of HKLR, the bored piling will be undertaken within a metal casing; A maximum of 30% public fill shall be used for all backfilling below -2.5mPD for the southern reclamation of TMCLKL, HKBCF and HKLR projects; where public fill is proposed for filling below -2.5mPD, the fine content in the public fill will be 	Marine-based works area	N/A

MATERIALAB CONSULTANTS LIMITED

Room 723 & 725, 7/F, Block B,
Profit Industrial Building,
1-15 Kwai Fung Crescent, Kwai Fong,
Hong Kong.

Tel : (852)-24508238
Fax : (852)-24508032
Email : mcl@fugro.com

MaterialLab

Report No.: 0165/15/ED/1156

EIA Ref.	EM&A Log Ref.	Recommended Mitigation Measures	Location of the measures	Implementation Status
		<p>controlled to 25%;</p> <ul style="list-style-type: none"> silt curtains (cage type) will be applied round all grab dredgers during the HKBCF, HKLR and TMCLKL southern reclamation works; single layer silt curtains will be applied around all works; when constructing Portion D of the HKBCF, one side of the seawall crossing the channel should be constructed first and prior to the other works. This would reduce the maximum flow speed across the channel and enhance the effectiveness of other mitigation measures such as silt curtain system; during the first two months of dredging work for HKBCF and HKLR, the silt-removal efficiency of the silt-curtains shall be verified by examining the results of water quality monitoring points. The water quality monitoring points to be selected for the above shall be those close to the locations of the initial period of dredging work. Details in this regard shall be determined by the ENPO to be established, taking account of the Contractor's proposed actual locations of his initial period of dredging work. a sheet piled wall shall be constructed north of the HKBCF island, in order to allow the use of silt curtains during Phase 2 works; and silt curtain shall be fully maintained throughout the works. <p>In addition, dredging operations should be undertaken in such a manner as to minimise resuspension of sediments. Standard good dredging practice measures should, therefore, be implemented including the following requirements which should be written into the dredging contract.</p> <ul style="list-style-type: none"> trailer suction hopper dredgers shall not allow mud to overflow; use of Lean Material Overboard (LMOB) systems shall be prohibited; mechanical grabs shall be designed and maintained to avoid spillage and should seal tightly while being lifted; barges and hopper dredgers shall have tight fitting seals to their bottom openings to prevent leakage of material; any pipe leakages shall be repaired quickly. Plant should not be operated with leaking pipes; loading of barges and hoppers shall be controlled to prevent splashing of dredged material to the surrounding water. Barges or hoppers shall not be filled to a level which will cause overflow of materials or pollution of water during loading or transportation; excess material shall be cleaned from the decks and exposed fittings of barges and hopper dredgers before the vessel is moved; adequate freeboard shall be maintained on barges to reduce the likelihood of decks being washed by wave action; all vessels shall be sized such that adequate clearance is maintained between vessels and the sea bed at all states of the tide to ensure that undue turbidity is not generated by turbulence from vessel movement or propeller wash; and the works shall not cause foam, oil, grease, litter or other objectionable matter to be present in the water within and adjacent to the works site. 		
S9.11.1.3	W2	<p><u>Land Works</u> General construction activities on land should also be governed by standard good working practice.</p>	Land-based works area	V

MATERIALAB CONSULTANTS LIMITED

Room 723 & 725, 7/F, Block B,
Proffitt Industrial Building,
1-15 Kwai Fung Crescent, Kwai Fong,
Hong Kong.

Tel : (852)-24508238
Fax : (852)-24508032
Email : mcl@fugro.com



Report No.: 0165/15/ED/1156

EIA Ref.	EM&A Log Ref.	Recommended Mitigation Measures	Location of the measures	Implementation Status
		<p>Specific measures to be written into the works contracts should include:</p> <ul style="list-style-type: none"> • wastewater from temporary site facilities should be controlled to prevent direct discharge to surface or marine waters; • sewage effluent and discharges from on-site kitchen facilities shall be directed to Government sewer in accordance with the requirements of the WPCO or collected for disposal offsite. The use of soakaways shall be avoided; • storm drainage shall be directed to storm drains via adequately designed sand/silt removal facilities such as sand traps, silt traps and sediment basins. Channels, earth bunds or sand bag barriers should be provided on site to properly direct stormwater to such silt removal facilities. Catchpits and perimeter channels should be constructed in advance of site formation works and earthworks; • silt removal facilities, channels and manholes shall be maintained and any deposited silt and grit shall be removed regularly, including specifically at the onset of and after each rainstorm; • temporary access roads should be surfaced with crushed stone or gravel; • rainwater pumped out from trenches or foundation excavations should be discharged into storm drains via silt removal facilities; • measures should be taken to prevent the washout of construction materials, soil, silt or debris into any drainage system; • open stockpiles of construction materials (e.g. aggregates and sand) on site should be covered with tarpaulin or similar fabric during rainstorms; • manholes (including any newly constructed ones) should always be adequately covered and temporarily sealed so as to prevent silt, construction materials or debris from getting into the drainage system, and to prevent storm run-off from getting into foul sewers; • discharges of surface run-off into foul sewers must always be prevented in order not to unduly overload the foul sewerage system; 		
S9.11.1.7	W2	<ul style="list-style-type: none"> • all vehicles and plant should be cleaned before they leave the construction site to ensure that no earth, mud or debris is deposited by them on roads. A wheel washing bay should be provided at every site exit; • wheel wash overflow shall be directed to silt removal facilities before being discharged to the storm drain; • the section of construction road between the wheel washing bay and the public road should be surfaced with crushed stone or coarse gravel; • wastewater generated from concreting, plastering, internal decoration, cleaning work and other similar activities, shall be screened to remove large objects; • vehicle and plant servicing areas, vehicle wash bays and lubrication facilities shall be located under roofed areas. The drainage in these covered areas shall be connected to foul sewers via a petrol interceptor in accordance with the requirements of the WPCO or collected for off site disposal; • the contractors shall prepare an oil / chemical cleanup plan and ensure that leakages or spillages are contained and cleaned up 	Land-based works area	V

MATERIALAB CONSULTANTS LIMITED

Room 723 & 725, 7/F, Block B,
Profit Industrial Building,
1-15 Kwai Fung Crescent, Kwai Fong,
Hong Kong.

Tel : (852)-24508238
Fax : (852)-24508032
Email : mcl@fugro.com

Materialab

Report No.: 0165/15/ED/1156

EIA Ref.	EM&A Log Ref.	Recommended Mitigation Measures	Location of the measures	Implementation Status
		<ul style="list-style-type: none"> immediately; waste oil should be collected and stored for recycling or disposal, in accordance with the Waste Disposal Ordinance; all fuel tanks and chemical storage areas should be provided with locks and be sited on sealed areas. The storage areas should be surrounded by bunds with a capacity equal to 110% of the storage capacity of the largest tank; and surface run-off from bunded areas should pass through oil/grease traps prior to discharge to the stormwater system. 		
S9.14	W3	Implement a water quality monitoring programme	Selected representative WQM stations	V (Conducted by Contract No. HY/2013/04)
Ecology (Construction Phase)				
S10.7	E4	<ul style="list-style-type: none"> Watering to reduce dust generation; prevention of siltation of freshwater habitats; Site runoff should be desilted, to reduce the potential for suspended sediments, organics and other contaminants to enter streams and standing freshwater 	Land-based works areas	V
S10.7	E5	<ul style="list-style-type: none"> Good site practices, including strictly following the permitted works hours, using quieter machines where practicable, and avoiding excessive lightings during night time 	Land-based works areas	V
S10.7	E6	<ul style="list-style-type: none"> Dolphin Exclusion Zone Dolphin watching plan 	Marine works	N/A
S10.7	E7	<ul style="list-style-type: none"> Decouple compressors and other equipment on working vessels Proposal on design and implementation of acoustic decoupling measures applied during dredging and reclamation works Avoidance of percussive piling 	Marine works	N/A
S10.7	E8	<ul style="list-style-type: none"> Control vessel speed Skipper training Predefined and regular routes for working vessels; avoid Brother Islands. 	Marine Traffic	N/A
S10.10	E9	Vessel based dolphin monitoring	Northeast and Northwest Lantau	V (Conducted by Contract No. HY/2013/04)
Fisheries				
S11.7	F4	<ul style="list-style-type: none"> Maritime Oil Spill Response Plan (MOSRP); Contingency plan. 	HKBCF	V
Landscape & Visual (Detailed Design Phase)				
S14.3.3.1	LV1	<p>General design measures include:</p> <ul style="list-style-type: none"> Roadside planting and planting along the edge of the HKBCF Island is proposed; Transplanting of mature trees in good health and amenity value where appropriate and reinstatement of areas disturbed during construction by compensatory hydro-seeding and planting; Protection measures for the trees to be retained during construction activities; Optimizing the sizes and spacing of the bridge columns; Fine-tuning the location of the bridge columns to avoid visually-sensitive locations; Providing planting area around peripheral of HKBCF for tree planting screening effect; Providing salt-tolerant native trees along the planter strip at affected seawall and newly reclaimed coastline; For HKBCF, providing aesthetic architectural design on the related buildings (e.g. similar materials for PCB building facade to Airport 	HKBCF	V

MATERIALAB CONSULTANTS LIMITED

Room 723 & 725, 7/F, Block B,
Profit Industrial Building,
1-15 Kwai Fung Crescent, Kwai Fong,
Hong Kong.

Tel : (852)-24508238
Fax : (852)-24508032
Email : mcl@fugro.com

MaterialLab

Report No.: 0165/15/ED/1156

EIA Ref.	EM&A Log Ref.	Recommended Mitigation Measures	Location of the measures	Implementation Status
		buildings, roof planting and subtle materials for other facilities buildings and so on), and the related infrastructure (e.g. parapet planting and transparent cover for elevated footbridges) to provide harmonious atmosphere of the HKBCF; and • Fine-tuning the sizes of the structural members to minimize the bulkiness of buildings and adjustment of building arrangement to minimise disturbance to surrounding vegetation in the HKBCF.		
Landscape & Visual (Construction Phase)				
S14.3.3.3	LV2	Mitigate both Landscape and Visual Impacts G1. Grass-hydrseed bare soil surface and stock pile areas. G2. Add planting strip and automatic irrigation system if appropriate at some portions of bridge footbridge to screen bridge and traffic. G3. Not applicable as this is for HKLR. G4. For HKBCF, providing aesthetic architectural design on the related buildings (e.g. similar materials for PCB building facade to Airport buildings, roof planting and subtle materials for other facilities buildings and so on), and the related infrastructure (e.g. parapet planting and transparent cover for elevated footbridges) to provide harmonious atmosphere of the HKBCF G5. Vegetation reinstatement and upgrading to disturbed areas G6. Maximizing new tree shrub and other vegetation planting to compensate tree felled and vegetation removed G7. Providing planting area around peripheral of HKBCF for tree planting screening effect; G8. Plant salt-tolerant native and shrubs etc along the planter strip at affected seawall. G9. Reserve of loose natural granite rocks for re-use, Provide new coastline to adopt "natural-look" by means of using armour rocks in the form of natural rock materials and planting strip area accommodating screen buffer to enhance "natural-look" of the new coastline.	Building 026, 031, 037, 039, 041, 043, 046 and all areas at ground level	N/A
S14.3.3.3	LV3	<u>Mitigate Visual Impacts</u> V1. Minimize time for construction activities during construction period. V2. Not applicable for HKBCF.	Building 026, 031, 037, 039, 041, 043, 046 and all areas at ground level	N/A
EM&A				
S15.2.2	EM1	An Independent Environmental Checker needs to be employed as per the EM&A Manual	All construction sites	V
S15.5 – S15.6	EM2	1) An Environmental Team needs to be employed as per the EM&A Manual. 2) Prepare a systematic Environmental Management Plan to ensure effective implementation of the mitigation measures. 3) An environmental impact monitoring needs to be implementing by the Environmental Team to ensure all the requirements given in the EM&A Manual are fully complied with.	All construction sites	V

Legend: V = implemented; x = not implemented; N/A = not applicable

MATERIALAB CONSULTANTS LIMITED

Room 723 & 725, 7/F, Block B,
Profit Industrial Building,
1-15 Kwai Fung Crescent, Kwai Fong,
Hong Kong.

Tel : (852)-24508238
Fax : (852)-24508032
Email : mcl@fugro.com



Report No.: 0165/15/ED/1156

Appendix G

**Statistics on Environmental Complaints, Notification of Summons
and Successful Prosecutions**

MATERIALAB CONSULTANTS LIMITED

Room 723 & 725, 7/F, Block B,
Profit Industrial Building,
1-15 Kwai Fung Crescent, Kwai Fong,
Hong Kong.

Tel : (852)-24508238
Fax : (852)-24508032
Email : mcl@fugro.com

Materialab

Report No.: 0165/15/ED/1156

Appendix G –**Statistics on Environmental Complaints, Notifications of Summons and Successful Prosecutions**

For Contract No. HY/2013/03

Reporting Period	Cumulative Statistics		
	Complaints	Notifications of Summons	Successful Prosecutions
This reporting period	0	0	0
From commencement date of construction to end of reporting month	15	0	0

For Contract No. HY/2013/06 within Contract No. HY/2013/03 works area

Reporting Period	Cumulative Statistics		
	Complaints	Notifications of Summons	Successful Prosecutions
This reporting period	0	0	0
From commencement date of construction to end of reporting month	0	0	0