



Highways Department  
5th Floor, Ho Man Tin Government Offices  
88 Chung Hau Street  
Ho Man Tin  
Kowloon

Your reference:

Our reference: HKHYD203/50/108289

Date: 18 October 2022

Attention: Mr Tony Wong

**BY EMAIL & POST**  
**(email: e20.mwsd@hyd.gov.hk)**

Dear Sirs

Agreement No. HMWSD 6/2022 (EP)  
Environmental Project Office for the Hong Kong-Zhuhai-Macao Bridge  
Hong Kong Link Road, Hong Kong-Zhuhai-Macao Hong Kong Boundary  
Crossing Facilities & Tuen Mun-Chek Lap Kok Link – Investigation

Contract No. HY/2019/01  
HZMB HKBCF – Phase 2 and Other Works  
Monthly EM&A Report for September 2022

We refer to emails of 7 and 17 October 2022 attaching a Monthly EM&A Report for September 2022 prepared by the Environmental Team (ET) of the captioned.

We have no comment and hereby verified the Monthly EM&A Report for September 2022 in accordance with Clause 5.4 of the Environmental Permit no. EP-353/2009/K.

Should you have any queries, please do not hesitate to contact the undersigned or our Mr Ricky Lau on 2618 2831.

Yours faithfully  
ANEWR CONSULTING LIMITED

James Choi  
Independent Environmental Checker

CPSJ/LCCR/lsm

cc Highway Department – Mr Eric Wong (Fax no. 3188 6614)  
Highway Department – Mr Y F Lau (Fax no. 3188 6614)  
AECOM Asia Co. Ltd. – Mr Jason Yu (Fax no.: 3748 8900)  
Fugro Technical Services Limited – Mr Calvin Leung (Fax no.: 2450 6138)  
China Harbour Engineering Company Limited – Mr Johnason Ko (Fax no.:2887 3104)

**AnewR Consulting Limited**  
Unit 517, 5/F, Tower A, Regent Centre  
63 Wo Yi Hop Road, Kwai Chung, Hong Kong  
Tel: (852) 2618 2831 Fax: (852) 3007 8648  
Email: info@anewr.com  
Web: www.anewr.com



17 October 2022

By Fax (3748 8900) and By Post

AECOM Asia Co. Ltd.  
The PRE's Office  
550 Cheung Tung Road, Lantau, Hong Kong

Attention: Mr. Jason Yu

Dear Sir,

**Re: Agreement No. CE 48/2011 (EP)  
Environmental Project Office for the  
HZMB Hong Kong Link Road, HZMB Hong Kong Boundary Crossing Facilities, and  
Tuen Mun-Chek Lap Kok Link – Investigation**

**Contract No. HY/2019/01  
HZMB HKBCF – Phase 2 and Other Works  
Monthly EM&A Report for September 2022**

Reference is made to the Environmental Team's submission of Monthly EM&A Report for September 2022 certified by the ET Leader (ET's ref.: "MCL/ED/0406/2022/C" dated 17 October 2022) and provided to us via e-mail on 17 October 2022.

We are pleased to inform you that we have no further comments on the captioned submission. We write to verify the captioned submission in accordance with Condition 5.4 of the Environmental Permit No. EP-353/2009/K (the EP).

Thank you very much for your attention and please feel free to contact the undersigned should you require further information.

Yours faithfully,  
For and on behalf of  
Ramboll Hong Kong Limited



Brian Tam  
Independent Environmental Checker  
HZMB HKBCF

c.c.	HyD	Attn.: Mr. Eric Wong	(By Fax: 3188 6614)
	HyD	Attn.: Mr. Y F Lau	(By Fax: 3188 6614)
	Fugro	Attn.: Mr. Calvin Leung	(By Fax: 2450 6138)
	CHEC	Attn.: Mr. Johnason Ko	(By Fax: 2887 3104)



FUGRO TECHNICAL SERVICES LIMITED  
Fugro Development Centre  
5 Lok Yi Street, Tai Lam  
Tuen Mun, NT  
Hong Kong

Date 17 October 2022  
Our Ref. MCL/ED/0406/2022/C

Ramboll Hong Kong Limited  
21/F, BEA Harbour View Centre,  
56 Gloucester Road,  
Wan Chai, Hong Kong

BY EMAIL

Attn.: Mr. Brian Tam, Independent Environmental Checker

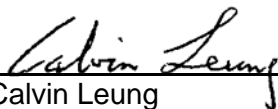
Dear Sir,

**EP Condition 5.4 – Monthly EM&A Report for  
Hong Kong-Zhuhai-Macao Bridge Hong Kong Boundary Crossing Facilities – Phase 2 and  
Other Works (Contract No. HY/2019/01)**

Pursuant to Condition 5.4 of the Environmental Permit (EP-353/2009K) for the captioned project, we hereby submit the certified Monthly EM&A Report for September 2022 for your verification.

Thank you for your attention, should there be any comments or queries, please contact our Mr. Cyrus Lai at 3565-4442 or the undersigned at 3565-4441.

Yours faithfully,  
for and on behalf of  
FUGRO TECHNICAL SERVICES LIMITED

  
\_\_\_\_\_

Calvin Leung  
Environmental Team Leader

c.c.	AECOM	Attn: Mr. Jason Yu, Mr. Gordon Kok
	Ramboll	Attn: Mr. Y. H. Hui, Mr. K. C. Chan
	CHEC	Attn: Mr. Marko Chan, Mr. Matthew Wu



---

# Monthly EM&A Report (September 2022)

0002/20/ED/0526 01 |

**Contact No. HY/2019/01 Hong Kong-Zhuhai-Macao Bridge Hong Kong Boundary Crossing Facilities – Phase 2 and Other Works**



# Document Control




## Document Information

Project Title	Hong Kong-Zhuhai-Macao Bridge Hong Kong Boundary Crossing Facilities – Phase 2 and Other Works (Contract No. HY/2019/01)
Document Title	Monthly EM&A Report (September 2022)
Fugro Project No.	0002/20
Fugro Document No.	0002/20/ED/0526
Issue Number	01

## Client Information

Client	China Harbour Engineering Co., Ltd. - Contract No. HY/2019/01
Client Address	China Harbour Building, 370-4 King's Road, North Point Hong Kong
Client Contact	Matthew Wu

## Environmental Team

Initials	Name	Role	Signature
MP	Calvin M.P. Leung	Environmental Team Leader	
CY	Cyrus C.Y. Lai	Senior Environmental Consultant	
KH	Toby K.H. Wan	Environmental Consultant	

---

## EXECUTIVE SUMMARY

This Monthly Environmental Monitoring and Audit (EM&A) Report is prepared for Contract No. HY/2019/01 "Hong Kong-Zhuhai-Macao Bridge Hong Kong Boundary Crossing Facilities – Phase 2 and Other Works" (hereafter referred to as "the Contract") for the Highways Department of Hong Kong Special Administrative Region (HKSAR). Contract No. HY/2019/01 was awarded to China Harbour Engineering Co. Limited and Fugro Technical Services Limited (FTS) was appointed as the Environmental Team (ET) by the Contractor.

Contract No. HY/2019/01 is part of the "Hong Kong-Zhuhai-Macao Bridge Hong Kong Boundary Crossing Facilities" (HZMB HKBCF) Project which is a "Designated Project" under Schedule 2 of the Environmental Impact Assessment (EIA) Ordinance (Cap. 499) and for which an EIA Report (Register No. AEIAR-145/2009) was prepared and approved. The current Environmental Permit (EP) for HKBCF, namely No. EP-353/2009/K, was issued on 11 April 2016. These documents are available through the EIA Ordinance Register. Commencement of the Contract took place on 4 December 2019 and the construction site preparation works commenced in early February 2020.

Fugro Technical Services Limited (FTS) has been appointed by the Contractor to implement the Environmental Monitoring & Audit (EM&A) programme for the Contract in accordance with the Updated EM&A Manual for HKBCF (Version 1.0) and is providing environmental team services for the Contract.

This is the 32<sup>nd</sup> Monthly EM&A Report for the Contract which summaries findings of the EM&A programme during the reporting period from 1 September 2022 to 30 September 2022.

### **Environmental Monitoring and Audit Progress**

The monthly EM&A programme was undertaken in accordance with the Updated EM&A Manual for HKBCF (Version 1.0). It should be noted that the air quality, noise and the post-construction dolphin monitoring works for the Contract are covered by Contract No. HY/2019/01 "Hong Kong-Zhuhai-Macao Bridge Hong Kong Boundary Crossing Facilities – Phase 2 and Other Works". The ET of the Contract or another ET of the HZMB project is required to conduct impact air quality monitoring at AMS6 as part of EM&A programme if the impact air quality monitoring work is no longer covered by Contract No. HY/2011/03 respectively. However, this is subject to ENPO's final decision on which ET should carry out the monitoring work at these stations.

### **Breaches of Action and Limit Levels**

According to the EPD's reply email, EPD has no comment on the Proposal for Termination of Air quality and Noise Monitoring, the air quality and noise monitoring for Contract No: HY/2019/01 have been terminated on 25 March 2022, no Action / Limit Level exceedance for air quality and noise monitoring was recorded during the period.

### **Complaint Log**

No complaints were received in the reporting period.

### **Notifications of any Summons and Successful Prosecutions**

No notifications of summons and prosecutions were received in the reporting period.

**Reporting Change**

No reporting change in the reporting period.

**Future Key Issues**

No main construction works will be carried out in the next reporting period.

# Contents

<b>EXECUTIVE SUMMARY</b>	<b>1</b>
<b>1. INTRODUCTION</b>	<b>5</b>
1.1 Background	5
1.2 Project Description	5
1.3 Project Organization	6
1.4 Construction Programme and Activities	6
1.5 Works undertaken during the month	6
1.6 Status of Environmental Licences, Notification and Permits	7
<b>2. AIR QUALITY</b>	<b>8</b>
2.1 Monitoring Requirement	8
2.2 Monitoring Locations	8
<b>3. NOISE</b>	<b>9</b>
3.1 Monitoring Requirement	9
3.2 Monitoring Parameters and Frequency	9
3.3 Monitoring Locations	9
<b>4. ECOLOGY MONITORING</b>	<b>10</b>
4.1 Monitoring Requirements	10
4.2 Monitoring Locations and Methodology	10
<b>5. SITE INSPECTION AND AUDIT</b>	<b>11</b>
5.1 Site Inspection	11
5.2 Landscape and Visual Site Audit (Establishment Period)	11
5.3 Advice on the Solid and Liquid Waste Management Status	11
<b>6. ENVIRONMENTAL COMPLAINT AND NON-COMPLIANCE</b>	<b>12</b>
6.1 Environmental Exceedance	12
6.2 Complaints, Notification of Summons and Prosecution	12
<b>7. IMPLEMENTATION STATUS OF ENVIRONMENTAL MITIGATION MEASURE</b>	<b>13</b>
7.1 Implementation Status	13
<b>8. FUTURE KEY ISSUES</b>	<b>14</b>
8.1 Construction Programme for the Next Month	14
8.2 Key Issues for the Coming Month	14
8.3 Monitoring Schedules for the Next Month	14
<b>9. CONCLUSION AND RECOMMENDATION</b>	<b>15</b>
9.1 Conclusions	15
9.2 Comment and Recommendations	15

---

## Tables

[Table 1.1 Contact Information of Key Personnel](#)

[Table 1.2 Environmental Licenses, Notification and Permits Summary](#)

[Table 2.1 Air Quality Monitoring Location](#)

[Table 3.1 Monitoring Parameters and Frequencies of Noise Monitoring](#)

[Table 3.2 Construction Noise Monitoring Location](#)

---

## Figures

Figure 1 The Site Layout Plan of the Contract

---

Figure 2 The Location of the Air Quality Monitoring Station

---

Figure 3 The Location of the Noise Monitoring Station

---

Figure 4 Post-Construction Dolphin Monitoring Line Transect Layout Map

---

---

## Appendices

Appendix A Construction Programme

---

Appendix B Project Organization Chart

---

Appendix C Event and Action Plan

---

Appendix D Waste Flow Table

---

Appendix E Implementation Status of Environment Mitigation Measures (Operation Phase)

---

Appendix F Cumulative statistics on Environmental Complaints, Notifications of Summons and Successful Prosecutions

---

Appendix G Summary of Site Audit in the Reporting Month

---

Appendix H Outstanding Issues and Deficiencies

---

Appendix I Environmental Monitoring Schedule

---

# 1. INTRODUCTION

## 1.1 Background

- 1.1.1 Fugro Technical Services Limited was commissioned by China Harbour Engineering Co. Limited (also referred to as “the Contractor”) to undertake the Environmental Team (ET) services (including environmental monitoring and audit (EM&A)) for Contract No. HY/2019/01 “Hong Kong-Zhuhai-Macao Bridge Hong Kong Boundary Crossing Facilities – Phase 2 and Other Works”.
- 1.1.2 Contract No. HY/2019/01 is part of the “Hong Kong-Zhuhai-Macao Bridge Hong Kong Boundary Crossing Facilities” (HZMB HKBCF) Project which is a “Designated Project” under Schedule 2 of the Environmental Impact Assessment (EIA) Ordinance (Cap. 499) and for which an EIA Report (Register No. AEIAR-145/2009) was prepared and approved. The current Environmental Permit (EP) for HKBCF, namely No. EP-353/2009/K, was issued on 11 April 2016. These documents are available through the EIA Ordinance Register. The general layout of the Project area is shown in **Figure 1**. Commencement of the Contract took place on 4 December 2019 and the construction site preparation works commenced in early February 2020.
- 1.1.3 This is the 32<sup>nd</sup> Monthly EM&A report to document the findings of site inspection activities and EM&A programme carried out by the Contractor of Contract No. HY/2019/01 from 1 September 2022 to 30 September 2022 (reporting period) and is submitted to fulfil Condition 5.4 of the EP.

## 1.2 Project Description

- 1.2.1 The works to be executed under Contract No. HY/2019/01 include the following major items:
- Landscaping and establishment works;
  - Irrigation system and associated drainage pumping system and facilities;
  - Erection and installation in the Passenger Clearance Building;
  - Public transport interchange (PTI) public toilet, satellite refuse collection point (RCP) and observation guard booths;
  - PTI cross boundary shuttle (CBS) / cross boundary coach (CBC) lanes and covered walkway;
  - Vehicle clearance plazas (VCP) vehicle kiosks and associate automatic vehicle clearance supporting system (AVCSS).

### 1.3 Project Organization

1.3.1 The Project Organization structure is shown in **Appendix B**. The key personnel contact names and numbers are summarized in **Table 1.1**.

Table 1.1 Contact Information of Key Personnel

Party	Position	Name	Telephone
Engineer or Engineer's Representative (AECOM Asia Co. Ltd.)	Senior Resident Engineer	Mr. Jason Yu	3748 8903
	Resident Engineer	Mr. K.W. Wong	3748 8967
Environmental Project Office / Independent Environmental Checker (Ramboll Hong Kong Limited)	Environmental Project Office Leader	Mr. Y. H. Hui	3465 2888
	Independent Environmental Checker (IEC)	Mr. Brian Tam	9700 6767
	Environmental Site Supervisor	Mr. K. C. Chan	3465 2882
Contractor (China Harbour Engineering Co. Ltd)	Environmental Manager	Mr. Marko Chan	9427 2879
	Environmental Officer	Mr. Matthew Wu	6076 2675
Environmental Team (Fugro Technical Services Limited)	Environmental Team Leader (ETL)	Mr. Calvin Leung	3565 4441

### 1.4 Construction Programme and Activities

1.4.1 The site layout plan of the Contract is shown in **Figure 1**.

1.4.2 The construction programme of this Contract is shown in **Appendix A**.

1.4.3 The Proposal for Termination of EM&A Programme in Construction Phase (0002\_20\_ED\_0467\_04) was verified by IEC on 13 June 2022 and approved by EPD on 5 July 2022 (EPD ref. () in AX(12) in EP771/E1/100).

### 1.5 Works undertaken during the month

1.5.1 No main construction works was carried out in the reporting period.

## 1.6 Status of Environmental Licences, Notification and Permits

1.6.1 A summary of the relevant permits, licenses and/or notifications on environmental protection for this Contract is presented in **Table 1.2**.

Table 1.2 Environmental Licenses, Notification and Permits Summary

Permit/ Notification/ License	Reference No	Valid From	Valid Till
Environmental Permit	EP-353/2009/K	11-Apr-16	Not Applicable
Notification pursuant to Air Pollution (Construction Dust) Regulation	451380	28-Nov-19	Not Applicable
Billing Account for Disposal of C&D waste	A/C No. 7036097	18-Dec-19	Not Applicable
Chemical Waste Producer Registration	5296-951-C1186-32	6-Feb-20	Not Applicable
Water Discharge License	WT00035721-2020	8-Jun-21	30-Apr 25



## 2. AIR QUALITY

### 2.1 Monitoring Requirement

- 2.1.1 In accordance with the Contract Specific EM&A Manual, 1-hour and 24-hour Total Suspended Particulates (TSP) levels should be measured at the designated air quality monitoring stations to indicate the impacts of construction dust on air quality. Impact 1-hour TSP monitoring was conducted for at least three times every 6 days, while impact 24-hour TSP monitoring was carried out for at least once every 6 days.
- 2.1.2 According to the EPD's reply email, EPD has no comment on the Proposal for Termination of Air quality and Noise Monitoring, the air quality monitoring for Contract No: HY/2019/01 have been terminated on 25 March 2022. The last monitoring was completed on 24 March 2022.

### 2.2 Monitoring Locations

- 2.2.1 In accordance with the Contract Specific EM&A Manual, four air quality monitoring locations, namely AMS2, AMS3C, AMS6 and AMS7B were set up at the proposed locations. AMS2, AMS3C and AMS7B are covered by Contract No. HY/2019/01 "Hong Kong-Zhuhai- Macao Bridge Hong Kong Boundary Crossing Facilities – Phase 2 and Other Works"
- 2.2.2 AMS6 is covered by Contract No. HY/2011/03 "Hong Kong-Zhuhai-Macao Bridge Hong Kong Link Road (HZMB HKLR) – Section between Scenic Hill and HKBCF". The ET of the Contract or another ET of the HZMB project is required to conduct impact air quality monitoring at AMS6 as part of EM&A programme if this air quality monitoring station is no longer covered by Contract No. HY/2011/03.
- 2.2.3 Due to the existing air quality monitoring location AMS7B would be hand over back to Airport Authority for their construction works. A new alternative air quality monitoring location is still under processing. Air quality monitoring location AMS7B was temporary suspended, effective from 10 December 2020.
- 2.2.4 According to the email date 11 August 2021, EPD have no comment on the Proposal for Relocation of Monitoring Location AMS 7B, the monitoring location AMS 7B are proposed to be relocated by alternative monitoring location AMS 7C for air quality monitoring. The monitoring location AMS 7C has resumed air quality monitoring on 5 October 2021.
- 2.2.5 The most updated locations of air quality monitoring are summarized in **Table 2.1** and they are shown in **Figure 2**.

Table 2.1 Air Quality Monitoring Location

Monitoring Station	Location
AMS2	Tung Chung Development Pier
AMS3C	Ying Tung Estate Market Rooftop
AMS6	Dragonair / CNAC (Group) Building (HKIA)
AMS7C	East Sea Rescue Berth – Airport Fire Contingent Third Runway Site Office

Remarks: The ET of this Contract should conduct impact air quality monitoring at station AMS6 listed in the table as part of EM&A programme according to latest notification from ENPO when the monitoring station is no longer covered by another ET of the HZMB project.

## 3. NOISE

### 3.1 Monitoring Requirement

3.1.1 In accordance with the Contract Specific EM&A Manuals,  $L_{eq}$  (30min) monitoring is conducted for at least once a week during the construction phase between 0700 and 1900 on normal weekdays at the designated monitoring locations.

3.1.2 According to the EPD's reply email, EPD has no comment on the Proposal for Termination of Air quality and Noise Monitoring, the noise monitoring for Contract No: HY/2019/01 have been terminated on 25 March 2022. The last monitoring was completed on 24 March 2022.

### 3.2 Monitoring Parameters and Frequency

3.2.1 The parameters and frequencies of impact noise monitoring is summarized in **Table 3.1**.

Table 3.1 Monitoring Parameters and Frequencies of Noise Monitoring

Parameter	Frequency
$L_{eq}$ (30min) $L_{10}$ and $L_{90}$ will be recorded for reference	At each station at 0700-1900 hours on normal weekdays at a frequency of once a week

### 3.3 Monitoring Locations

3.3.1 In accordance with the Contract Specific EM&A Manual, two noise monitoring locations, namely NMS2 and NMS3C are covered under Contract No. HY/2019/01 "Hong Kong-Zhuhai-Macao Bridge Hong Kong Boundary Crossing Facilities – Phase 2 and Other Works.

3.3.2 Due to rejection from Ho Yu College (NMS3) for setting up a noise monitoring station at their school, an alternative location at site boundary of the site office area at Works Area WA2 (NMS3B) is proposed. Impact noise monitoring has been relocated from NMS3B to Ying Tung Estate Market Rooftop (NMS3C) on 20 August 2018 under Contract No. HY/2013/04. The same baseline and Action and Limit levels for noise, as derived from the baseline monitoring data recorded at Ho Yu College, are adopted for this alternative noise monitoring location.

3.3.3 The most updated locations are summarized in **Table 3.2** and the locations of the noise monitoring stations shown in **Figure 3**.

Table 3.2 Construction Noise Monitoring Location

Monitoring Station	Location
NMS2	Seaview Crescent
NMS3C	Ying Tung Estate Refuse Collection Point

Remark: The Limit Levels for schools will be applied for this alternative monitoring location at NMS3C.

## 4. ECOLOGY MONITORING

### 4.1 Monitoring Requirements

- 4.1.1 All marine-based construction activities for the HKBCF project were completed in January 2019. No marine-based construction activities will be undertaken under this Contract. However, the ET of this Contract or another ET of the HZMB is required to conduct post-construction dolphin monitoring in accordance with Section 10.7 of the updated EM&A Manual.
- 4.1.2 The CV of the proposed dolphin specialist for this Contract has been submitted to IEC for review prior to submission to AFCD for approval.
- 4.1.3 According to the Proposal on Post-construction Dolphin Monitoring (PCDM) prepared by Contract No. HY/2013/04 which has been verified by ENPO and approved by EPD on 8 March 2019 (EPD ref. () in Ax(5) to E771/E1/100) , the completion date of the PCDM is in February 2021. Therefore, the reporting of Chinese White Dolphins monitoring works under this contract was completed on 1 March 2021.

### 4.2 Monitoring Locations and Methodology

- 4.2.1 In accordance with the requirements of the updated EM&A manual, the dolphin monitoring programme have adopted the standard line-transect method (Buckland et al. 2001) to survey the pre-set and fixed transect lines defined by AFCD in the Northeast Lantau (NEL) and Northwest Lantau (NWL) survey areas. The layout map of the transect lines provided by AFCD is presented in **Figure 4**.

## 5. SITE INSPECTION AND AUDIT

### 5.1 Site Inspection

- 5.1.1 Site audits were carried out by ET on weekly basis to monitor the implementation of proper environmental management practices and mitigation measures in the Project site.
- 5.1.2 Details of observations recorded during the site inspections are summarized in **Appendix G**.
- 5.1.3 According to the EPD's letter (EPD ref. () in AX(12) in EP771/E1/100), EPD has no comment on the Proposal for Termination of EM&A Programme in Construction Phase, the site inspection for Contract No: HY/2019/01 have been terminated on 5 July 2022. The last inspection was completed on 29 June 2022.

### 5.2 Landscape and Visual Site Audit (Establishment Period)

- 5.2.1 As informed by AECOM, the commencement date of the 12-month establishment period for the landscape monitoring under this contract is 5 January 2022. Bi-monthly landscape and visual site audits will be conducted from 5 January 2022 to 4 January 2023.
- 5.2.2 The next bi-monthly landscape and visual site audit was scheduled on 31 October 2022.

### 5.3 Advice on the Solid and Liquid Waste Management Status

- 5.3.1 The Contractor registered as a chemical waste producer for the Contract. Sufficient numbers of receptacles were available for general refuse collection and sorting.
- 5.3.2 The monthly summary of waste flow table is detailed in **Appendix D**.
- 5.3.3 If off-site disposal is required, the excavated marine mud from the land-based works shall be disposed of at the designated disposal sites within Hong Kong as allocated by the Marine Fill Committee or other locations as agreed by the Director. The Contractor shall ensure no spilling and overflowing of materials during loading / unloading / transportation is allowed.
- 5.3.4 The Contractor was reminded that chemical waste containers should be properly treated and stored temporarily in designated chemical waste storage area on site in accordance with the Code of Practice on the Packing, Labelling and Storage of Chemical Waste.

## 6. ENVIRONMENTAL COMPLAINT AND NON-COMPLIANCE

### 6.1 Environmental Exceedance

6.1.1 According to the EPD's reply email, EPD has no comment on the Proposal for Termination of Air quality and Noise Monitoring, the air quality and noise monitoring for Contract No: HY/2019/01 have been terminated on 25 March 2022, no Action / Limit Level exceedance for air quality and noise monitoring was recorded during the period.

### 6.2 Complaints, Notification of Summons and Prosecution

6.2.1 No environmental complaint, notification of summons and successful prosecution were received in the reporting month.

6.2.2 Cumulative complaint log, summaries of complaints, notification of summons and successful prosecutions are presented in **Appendix F**.

## 7. IMPLEMENTATION STATUS OF ENVIRONMENTAL MITIGATION MEASURE

### 7.1 Implementation Status

According to the EPD's letter (EPD ref. () in AX(12) in EP771/E1/100), EPD has no comment on the Proposal for Termination of EM&A Programme in Construction Phase, the EM&A programme for Contract No: HY/2019/01 have been terminated on 5 July 2022. The implementation status of the environmental mitigation measures during the reporting period is summarized in **Appendix C**.

## 8. FUTURE KEY ISSUES

### 8.1 Construction Programme for the Next Month

- No main construction works will be carried out in the next reporting period.

### 8.2 Key Issues for the Coming Month

8.2.1 Potential environmental impacts arising from the above construction activities are mainly associated with construction dust, construction noise, waste management and landscape and visual impact issues.

### 8.3 Monitoring Schedules for the Next Month

8.3.1 The tentative schedule for environmental monitoring in the coming month is provided in **Appendix I**.

## 9. CONCLUSION AND RECOMMENDATION

### 9.1 Conclusions

- 9.1.1 According to the EPD's reply email, EPD has no comment on the Proposal for Termination of Air quality and Noise Monitoring, the air quality and noise monitoring for Contract No: HY/2019/01 have been terminated on 25 March 2022, no Action / Limit Level exceedance for air quality and noise monitoring was recorded during the period.
- 9.1.2 According to the EPD's letter (EPD ref. () in AX(12) in EP771/E1/100), EPD has no comment on the Proposal for Termination of EM&A Programme in Construction Phase, the site inspection for Contract No: HY/2019/01 have been terminated on 5 July 2022.
- 9.1.3 Referring to the Contractor's information, no environmental complaint, notification of summons and successful prosecution was received in the reporting month.

### 9.2 Comment and Recommendations

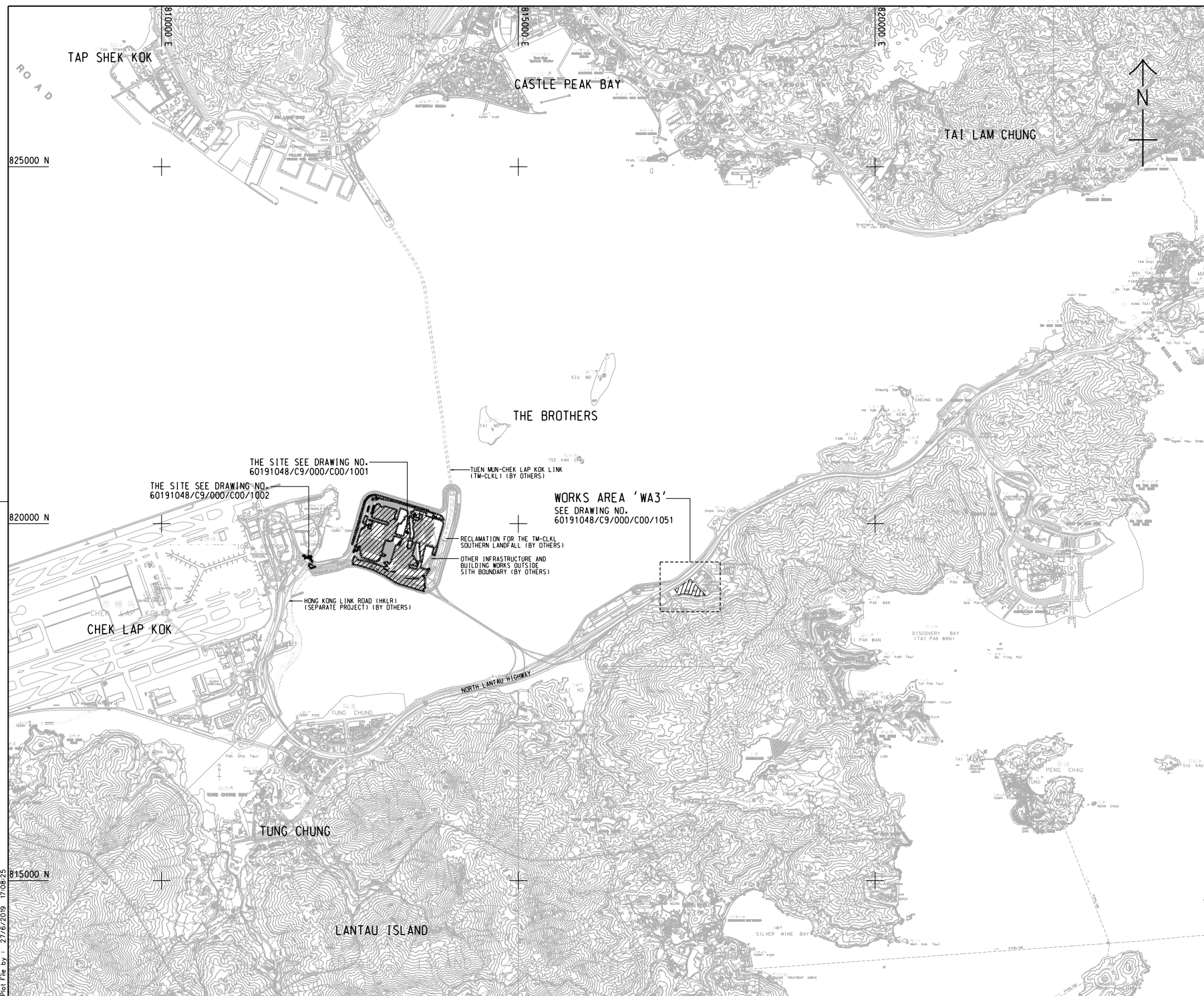
- 9.2.1 The recommended environmental mitigation measures, as proposed in the EIA reports and EM&A Manuals shall be effectively implemented to minimize the potential environmental impacts from the Project. The EM&A programme would effectively monitor the environmental impacts generated from the construction activities and ensure the proper implementation of mitigation measures.
- 9.2.2 According to the environmental site inspections performed in the reporting month, the following recommendations were provided:
- Air Quality Impact
- No specific observation was identified in the reporting month.
- Construction Noise Impact
- No specific observation was identified in the reporting month.
- Water Quality Impact
- No specific observation was identified in the reporting month.
- Chemical and Waste Management
- No specific observation was identified in the reporting month.
- Permit/ Licenses
- No specific observation was identified in the reporting month.



# Figure 1

---

The Site Layout Plan of the Contract



- NOTES:**
- COORDINATES ARE RELATED TO HONG KONG METRIC GRID (1980).
  - DIMENSIONS ARE IN MILLIMETER AND CHAINAGE ARE IN METRES UNLESS OTHERWISE SHOWN.



THE SITE SEE DRAWING NO. 60191048/C9/000/C00/1001

THE SITE SEE DRAWING NO. 60191048/C9/000/C00/1002

WORKS AREA 'WA3'  
SEE DRAWING NO. 60191048/C9/000/C00/1051

TUEN MUN-CHEK LAP KOK LINK (TM-CKLK) (BY OTHERS)

RECLAMATION FOR THE TM-CKLK SOUTHERN LANDFALL (BY OTHERS)

OTHER INFRASTRUCTURE AND BUILDING WORKS OUTSIDE SITE BOUNDARY (BY OTHERS)

HONG KONG LINK ROAD (HKLR) (SEPARATE PROJECT) (BY OTHERS)

REV. NO.	DESCRIPTION	BY	DATE
-	TENDER DRAWING	TTHK	JUL 19

**香港高速公路局**  
**HIGHWAYS DEPARTMENT**  
 主要工程管理處 (傳真與函)  
 Major Works Project Management Office (Special Duties)

**香港-珠海-澳門大橋**  
**HONG KONG-ZHUHAI-MACAO BRIDGE**  
 香港-珠海-澳門大橋  
 HONG KONG BOUNDARY CROSSING FACILITIES - PHASE 2 AND OTHER WORKS

**SITE LOCATION PLAN**

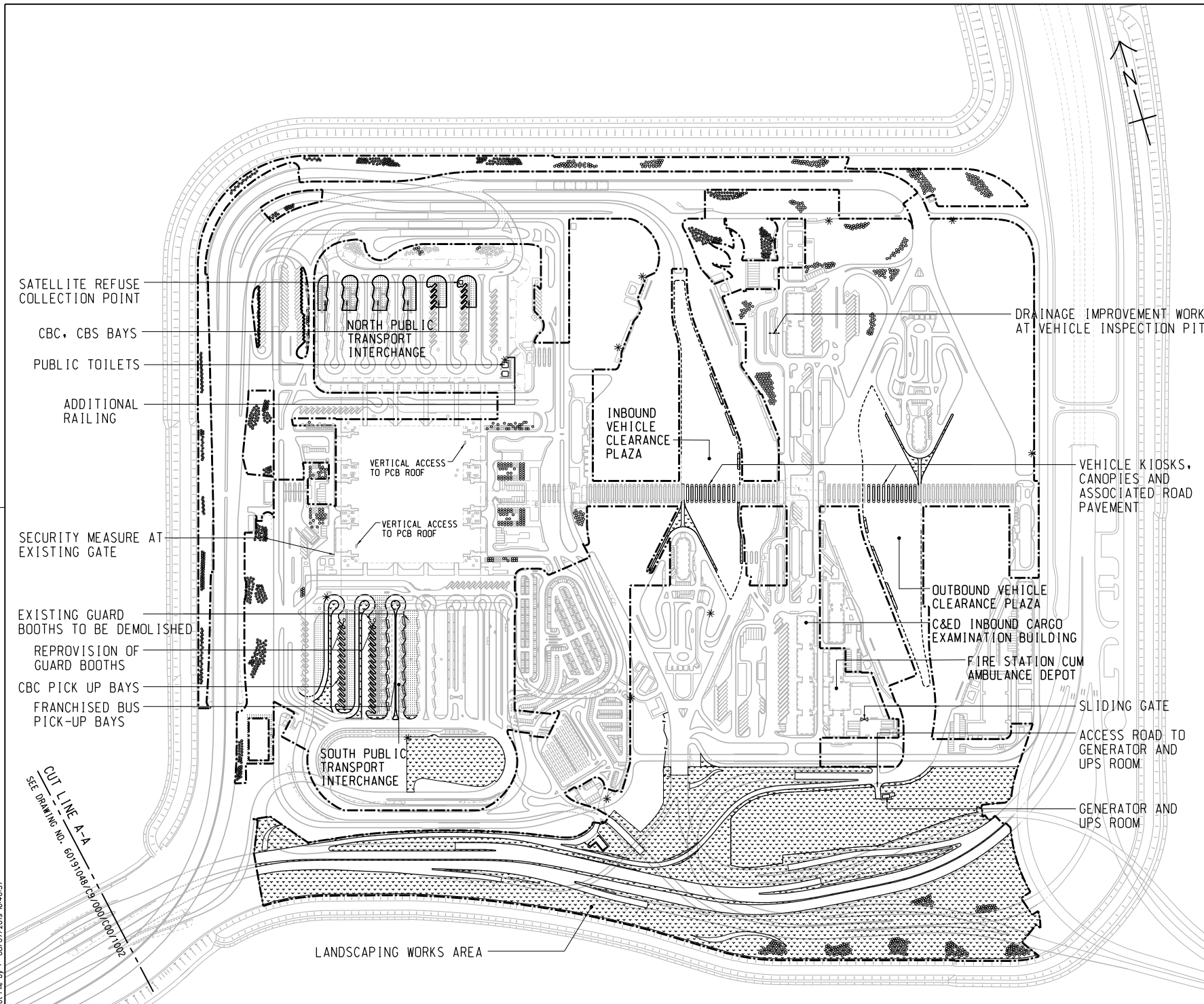
**AECOM** +  
 Rogers Stirk Harbour + Partners  
**Aedas**  
 BURO HAPPOLD ATKINS ADI +

DRG. NO. 60191048/C9/000/C00/1000  
 圖紙編號

DESIGNED BY TTHK	CONTRACT NO. HY/2019/01	APPROVED BY SC1
DRAWN BY JC	STATUS REV	
SCALE A1 1 : 25000		
UNIT METRES		

© COPYRIGHT RESERVED  
 版權所有

Plot File by : 27/6/2019 17:08:25



**REMARKS:**

- IN SPT1:
  - DEMOLISH 2 NOS. EXISTING GUARD BOOTHS AND RE-PROVISION TO REVISED LOCATIONS AS SHOWN
  - CONSTRUCT COVERED WALKWAYS FOR THE NEW FB AND CBC PICK UP BAYS
  - MODIFY EXISTING DUCTING AND POLES FOR ELV SYSTEM, ROAD LIGHTING AND PILLAR BOXES, AND THE ASSOCIATED CABLING WORKS
  - RELOCATE AND REINSTATE 3 NOS. OF EXISTING BUS OPERATOR OFFICES AND FOOD TRUCK
  - REPLACEMENT OF DRAWPIT COVERS
- IN NPT1:
  - CONSTRUCT COVERED WALKWAYS FOR THE NEW CBC, CBS PICK UP BAYS AND PUBLIC TOILETS
  - PROVIDE AUTOMATIC IRRIGATION SYSTEM AT SLOPES
  - MODIFY EXISTING COVERED WALKWAY AND PROVISION OF LIGHTING
  - REPLACEMENT OF DRAWPIT COVERS
- LANDSCAPING WORKS AREA:
  - CONSTRUCT IRRIGATION SYSTEM WITH 13 NOS. OF NEW WATER POINT AND THE AUTOMATIC IRRIGATION SYSTEM AND PROVIDE MAINTENANCE WORKS
  - LANDSCAPE SOFTWORK, ESTABLISHMENT AND MAINTENANCE WORKS
  - CONSTRUCT RIVER WASHED STONE SWATHE AND MAINTENANCE WORKS
  - PROTECT EXISTING PLANTING AND HARD STRUCTURES
- PASSENGER CLEARANCE BUILDING
  - VERTICAL ACCESS
  - IMPROVEMENT WORKS FOR WATER FEATURE
  - MINOR REMAINING WORKS
  - PROVISION OF NEW CENTRAL AVSS EQUIPMENT WITH SUFFICIENT CAPACITY, PROCESSING POWER AND STORAGE TO ACCOMMODATE BOTH THE EXISTING AND NEW AVSS
- VEHICLE KIOSKS AT INBOUND & OUTBOUND VCP
  - PROVISION OF AVSS AT NEW KIOSKS TO SERVE 24 NOS. VEHICULAR LANES
  - REPLACEMENT OF BARRIER GATE WITH SKIRTING AT 72 NOS. EXISTING KIOSK
- C&E INBOUND CARGO EXAMINATION BUILDING
  - PROVISION OF NEW CENTRAL AVSS EQUIPMENT WITH SUFFICIENT CAPACITY, PROCESSING POWER AND STORAGE TO ACCOMMODATE BOTH THE EXISTING AND NEW AVSS

**ABBREVIATION:**

SPT1 - SOUTH PUBLIC TRANSPORT INTERCHANGE  
 NPT1 - NORTH PUBLIC TRANSPORT INTERCHANGE  
 VCP - VEHICLE CLEARANCE PLAZA  
 PCB - PASSENGER CLEARANCE BUILDING  
 FB - FRANCHISED BUS  
 CBC - CROSS BOUNDARY COACH  
 CBS - CROSS BOUNDARY SHUTTLE  
 ELV - EXTRA LOW VOLTAGE  
 AVSS - AUTOMATIC VEHICLE CLEARANCE SUPPORT SYSTEM

**NOTE:**

1. THIS DRAWING TO BE READ IN CONJUNCTION WITH DRAWING NOS. 60191048/C9/000/C00/1002

**LEGEND:**

- SITE BOUNDARY
- AMENITY AREA
- FOOTPATH
- COVERED WALKWAY
- SECURITY FENCE
- TREE PLANTING
- IRRIGATION POINT

NO.	DESCRIPTION	DATE
-	TENDER DRAWING	TTHK/000 JUL 19

**HONG KONG HIGHWAYS DEPARTMENT**  
 香港公路局  
 Major Works Project Management Office (Special Duties)  
 主要工程管理處 (專責業務)

**HONG KONG-ZHUIHAI-MACAO BRIDGE**  
 HONG KONG BOUNDARY CROSSING FACILITIES  
 PHASE 2 AND OTHER WORKS

**GENERAL ARRANGEMENT**

SHEET 1 OF 2

**AECOM** +  
 Rogers Stirk Harbour + Partners  
**Aedas** +  
 BURO HAPPOLD ATKINS ADI +

DRGNO 60191048/C9/000/C00/1001  
 圖紙編號

DESIGNED BY TTHK CONTRACT NO. HY/2019/01 P. Dir. APPROVED  
 設計人 TTHK 合約編號 HY/2019/01 主任工程師 SCI

SCALE 1:2500  
 縮尺

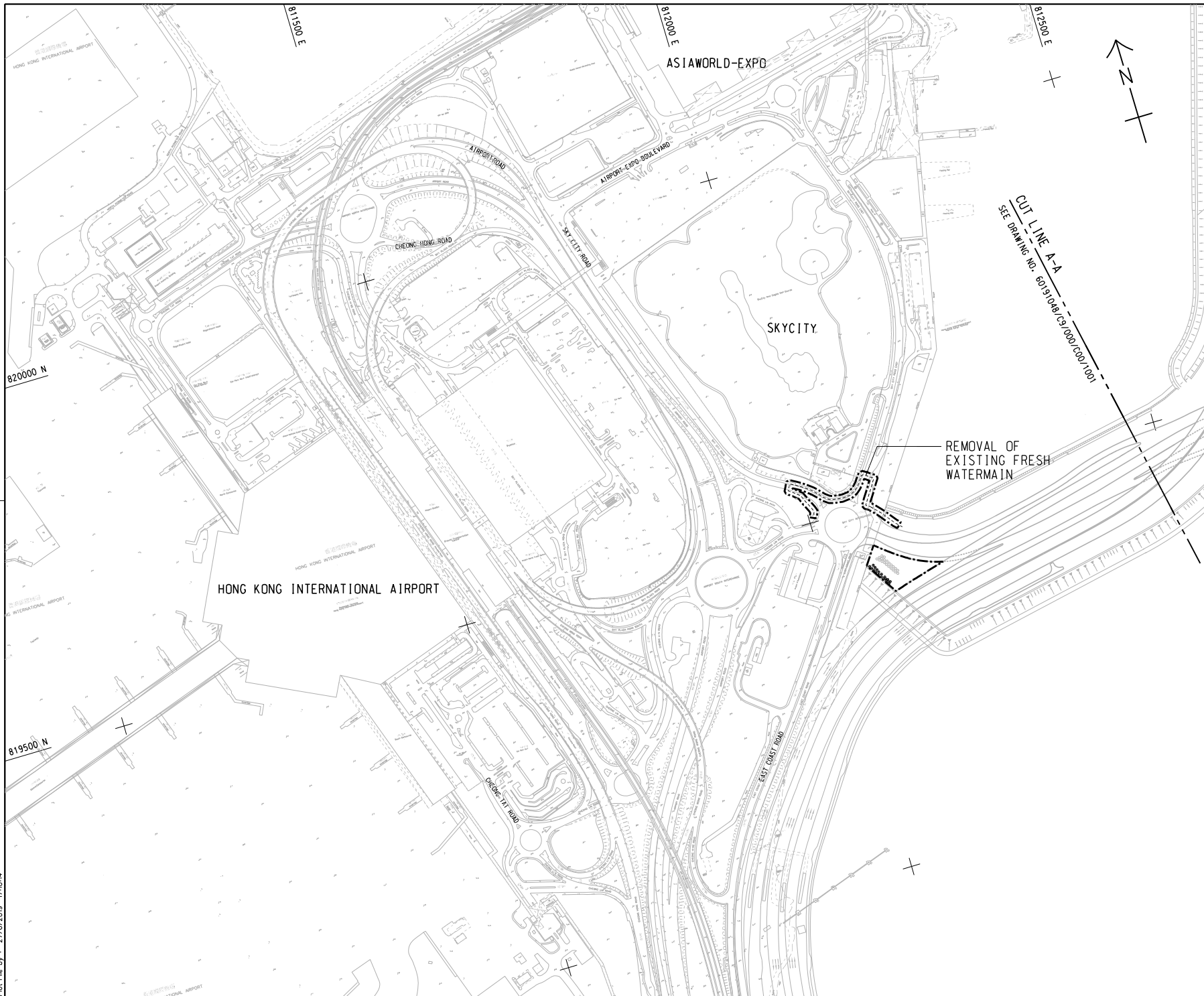
DRAWING UNIT METRES  
 圖紙單位 公尺

© COPYRIGHT RESERVED  
 版權所有

Plot File by : 09/07/2019 B-4657

CUT LINE A-A  
 SEE DRAWING NO. 60191048/C9/000/C00/1002

LANDSCAPING WORKS AREA



**NOTE:**  
 1. THIS DRAWING TO BE READ IN CONJUNCTION WITH DRAWING NOS. 60191048/C9/000/C00/1001.

REV. NO.	DESCRIPTION	DATE
1	TENDER DRAWING	JUL 19

**HIGHWAYS DEPARTMENT**  
 主要工程管理處 (傳真專組)  
 Major Works Project Management Office (Special Duties)

**HONG KONG-ZHUHAI-MACAO BRIDGE**  
 HONG KONG BOUNDARY CROSSING FACILITIES  
 - PHASE 2 AND OTHER WORKS

**GENERAL ARRANGEMENT**  
 SHEET 2 OF 2

**AECOM** +  
 Rogers Stirk Harbour + Partners  
**Aedas**  
 BURO HAPPOLD ATKINS ADI +

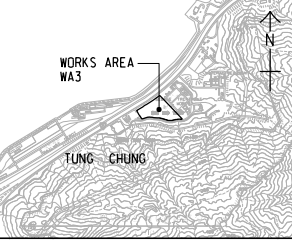
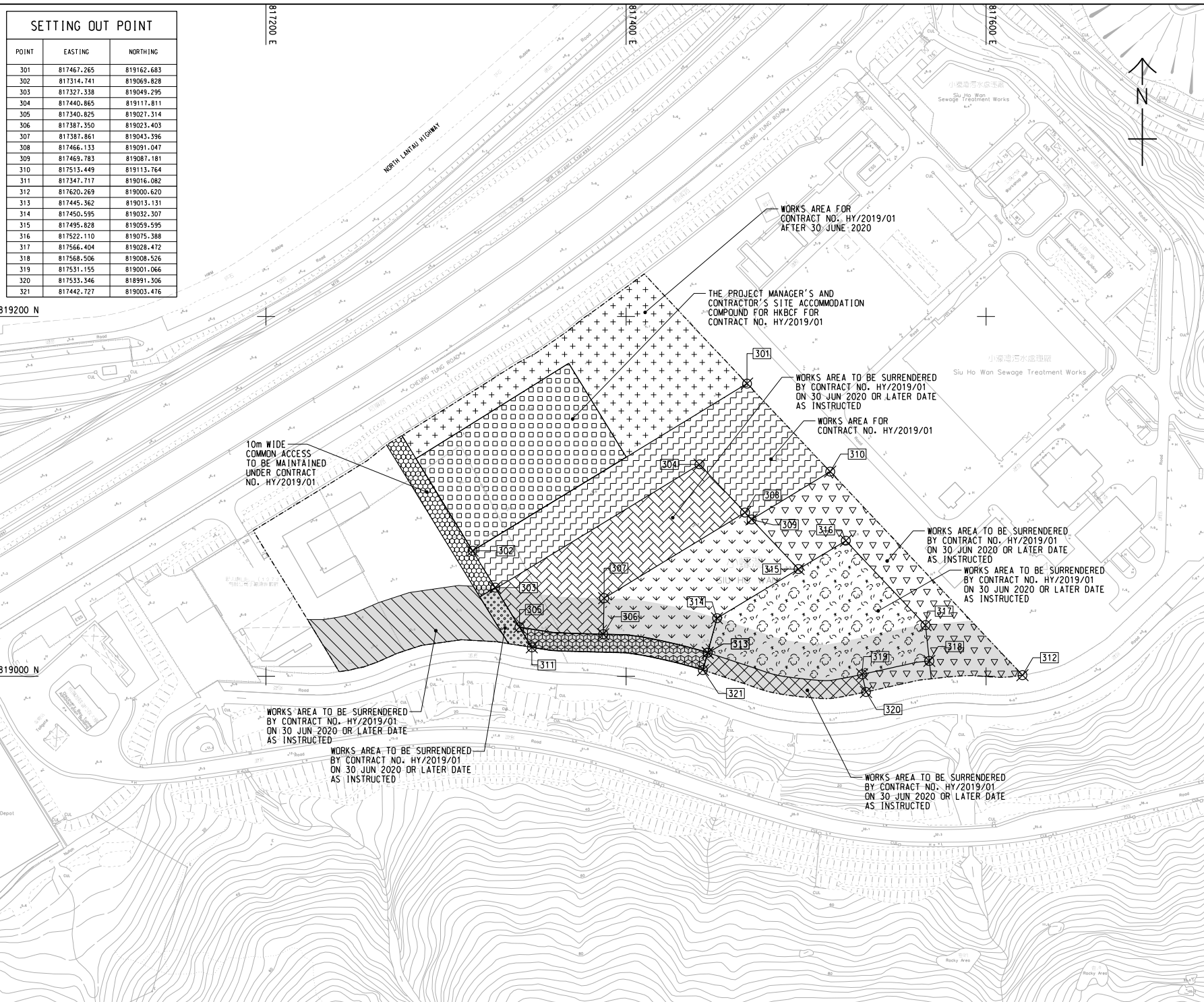
DRG. NO. 60191048/C9/000/C00/1002  
 圖紙編號

DESIGNED BY 設計	CONTRACT NO. 合約編號	P. Dir. APPROVED 審核人
TTHK	HY/2019/01	SCI

SCALE  
比例  
A1 1 : 2500  
 DIMENSIONING UNIT IN METRES  
 © COPYRIGHT RESERVED  
 版權所有

Plot File by : 27/6/2019 17:03:4

SETTING OUT POINT		
POINT	EASTING	NORTHING
301	817467.265	819162.683
302	817314.741	819069.828
303	817327.338	819049.295
304	817440.865	819117.811
305	817340.825	819027.314
306	817387.350	819023.403
307	817387.861	819043.396
308	817466.133	819091.047
309	817469.783	819087.181
310	817513.449	819113.764
311	817347.717	819016.082
312	817620.269	819000.620
313	817445.362	819013.131
314	817450.595	819032.307
315	817495.828	819059.595
316	817522.110	819075.388
317	817566.404	819028.472
318	817568.506	819008.526
319	817531.155	819001.066
320	817533.346	818991.306
321	817442.727	819003.476



LOCATION PLAN  
SCALE 1 : 25000

NOTES:  
 1. COORDINATES ARE RELATED TO HONG KONG METRIC GRID (1980).  
 2. DIMENSIONS ARE IN MILLIMETER AND CHAINAGE ARE IN METRES UNLESS OTHERWISE SHOWN.

LEGEND:

	WORKS AREA BOUNDARY
	PORTION 3.1
	PORTION 3.2
	PORTION 3.3
	PORTION 3.4
	PORTION 3.5
	PORTION 3.6
	PORTION 3.7
	PORTION 3.8
	PORTION 3.9
	PORTION 3.10
	PORTION 3.11
	PORTION 3.12
	NON-BUILDING AREA 8200m <sup>2</sup> (WHOLE)

REV. NO.	DESCRIPTION	DATE
1	TENDER DRAWING	TTHK 06/2019

HIGHWAYS DEPARTMENT  
 Major Works Project Management Office (Special Duties)  
 HONG KONG-ZHUIHAI-MACAO BRIDGE  
 HONG KONG BOUNDARY CROSSING FACILITIES  
 - PHASE 2 AND OTHER WORKS

WORKS AREA WA3

**AECOM** +  
 Rogers Stirk Harbour + Partners  
 BURO HAPPOLD ATKINS ADI +  
**Aedas**

DRGNO. 60191048/C9/000/C00/1051  
 圖紙編號

DESIGNED BY TTHK	CONTRACT NO. HY/2019/01	P. Dir. APPROVED SCL 1
DRAWN BY JC	STATUS REV	
SCALE AS 1 : 1000	DRAWING UNIT IN METRES	

© COPYRIGHT RESERVED  
 版權 所 有

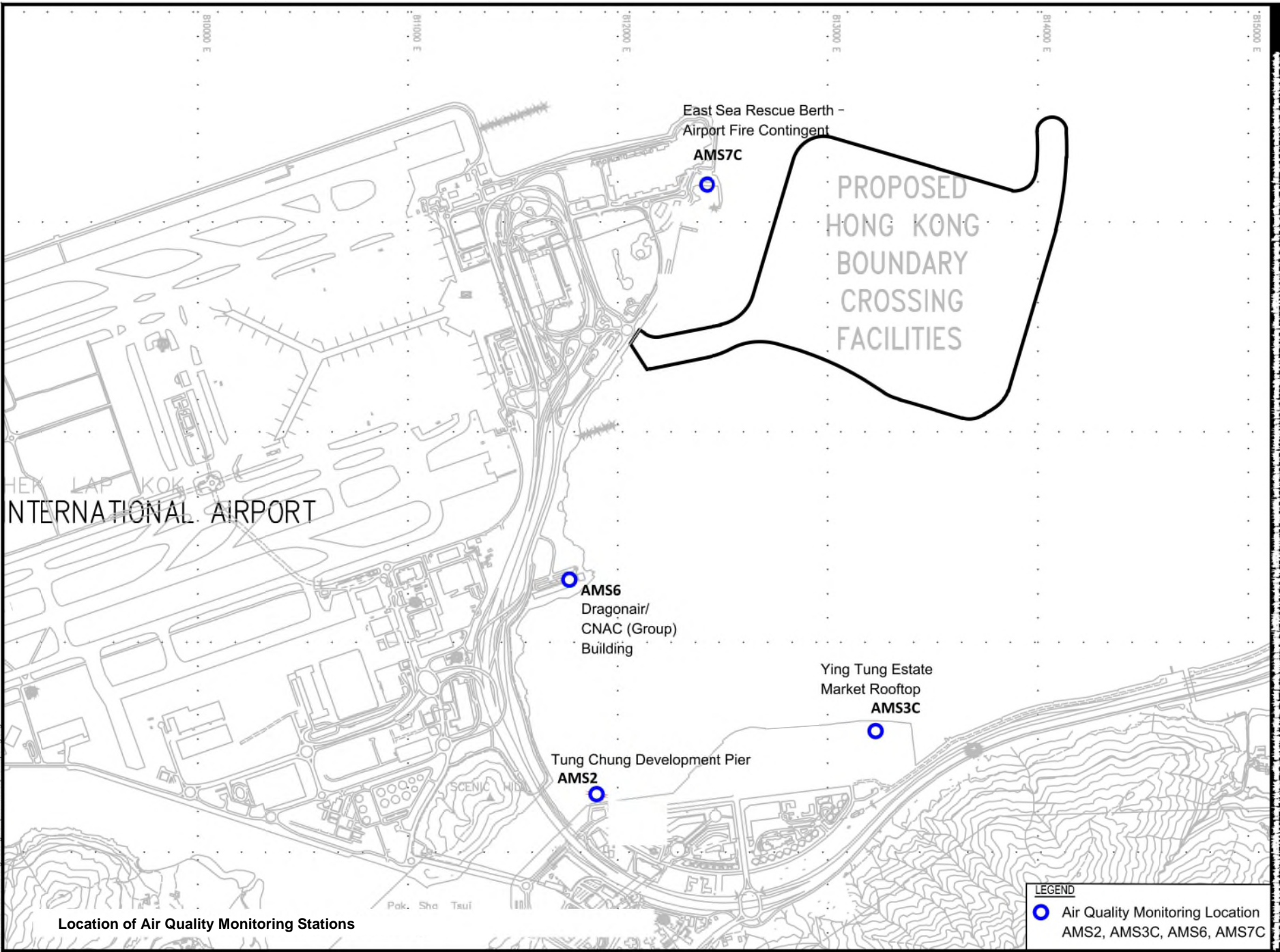
Plot File by : 2019/06/20 9:34:39

## Figure 2

---

The Location of the Air Quality Monitoring Station





Location of Air Quality Monitoring Stations

**LEGEND**

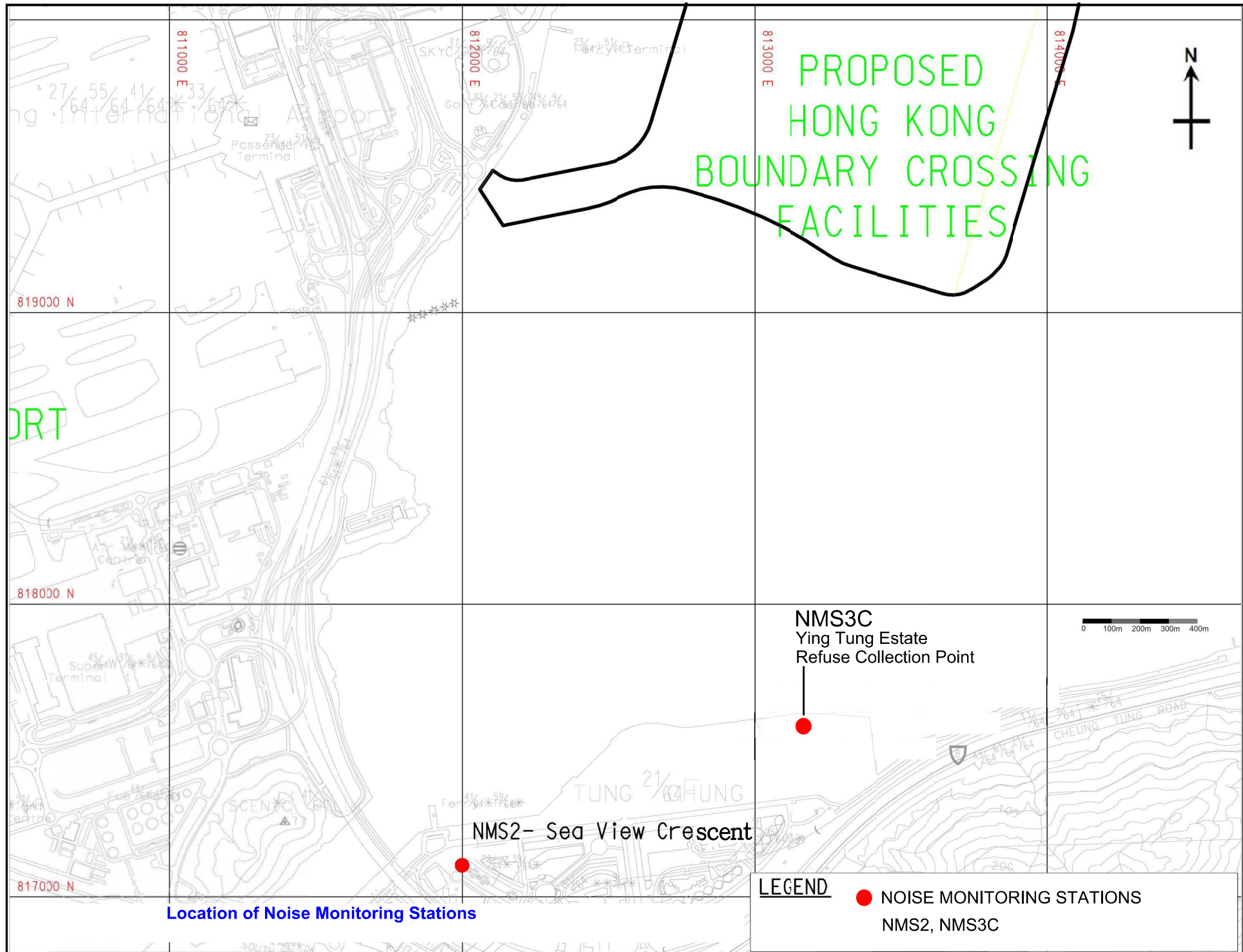
- Air Quality Monitoring Location  
AMS2, AMS3C, AMS6, AMS7C

## Figure 3

---

The Location of the Noise Monitoring Station

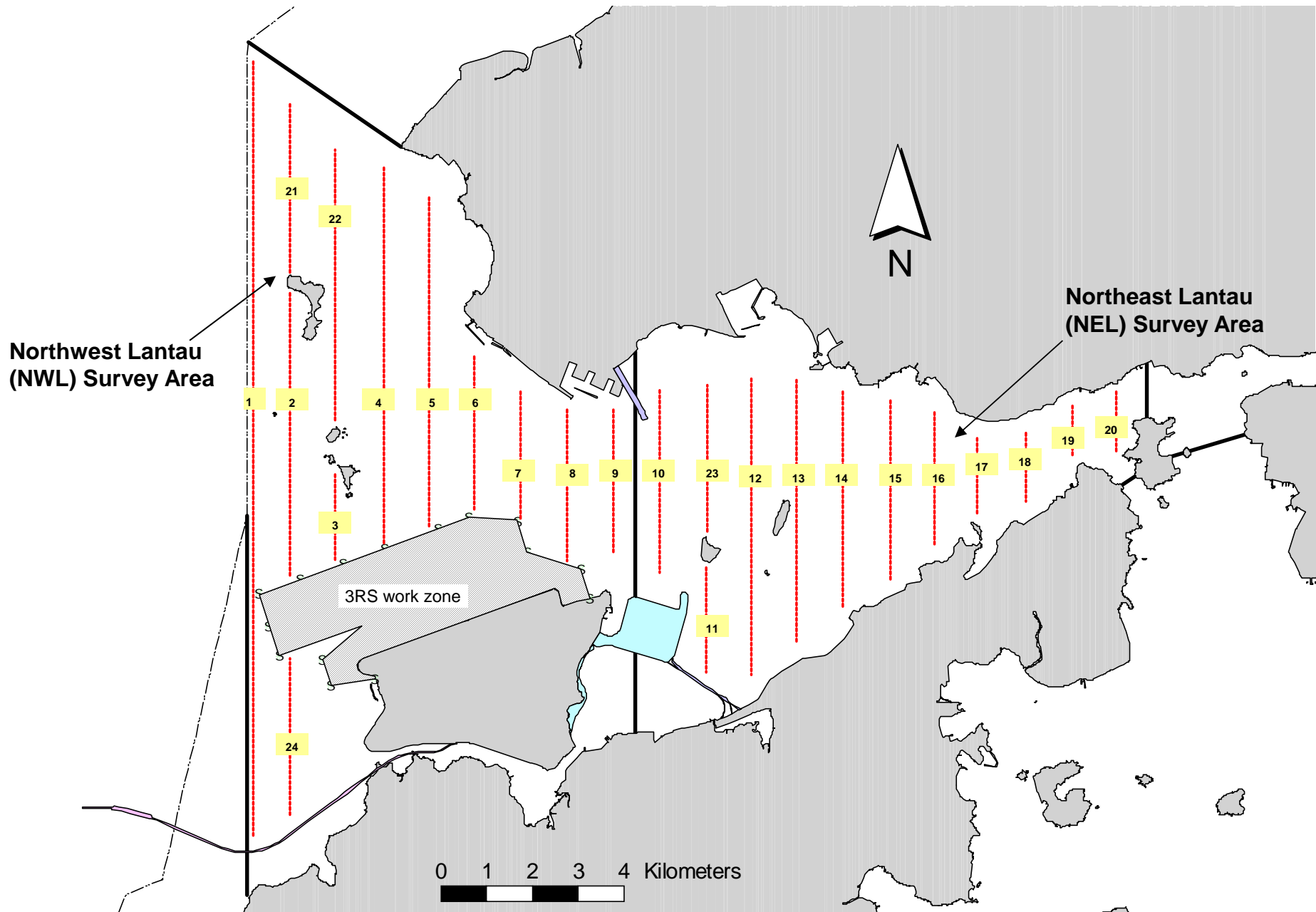




# Figure 4

---

Post-Construction Dolphin Monitoring Line Transect  
Layout Map



Transect Line Layout in Northwest and Northeast Lantau Survey Areas

# Appendix A

---

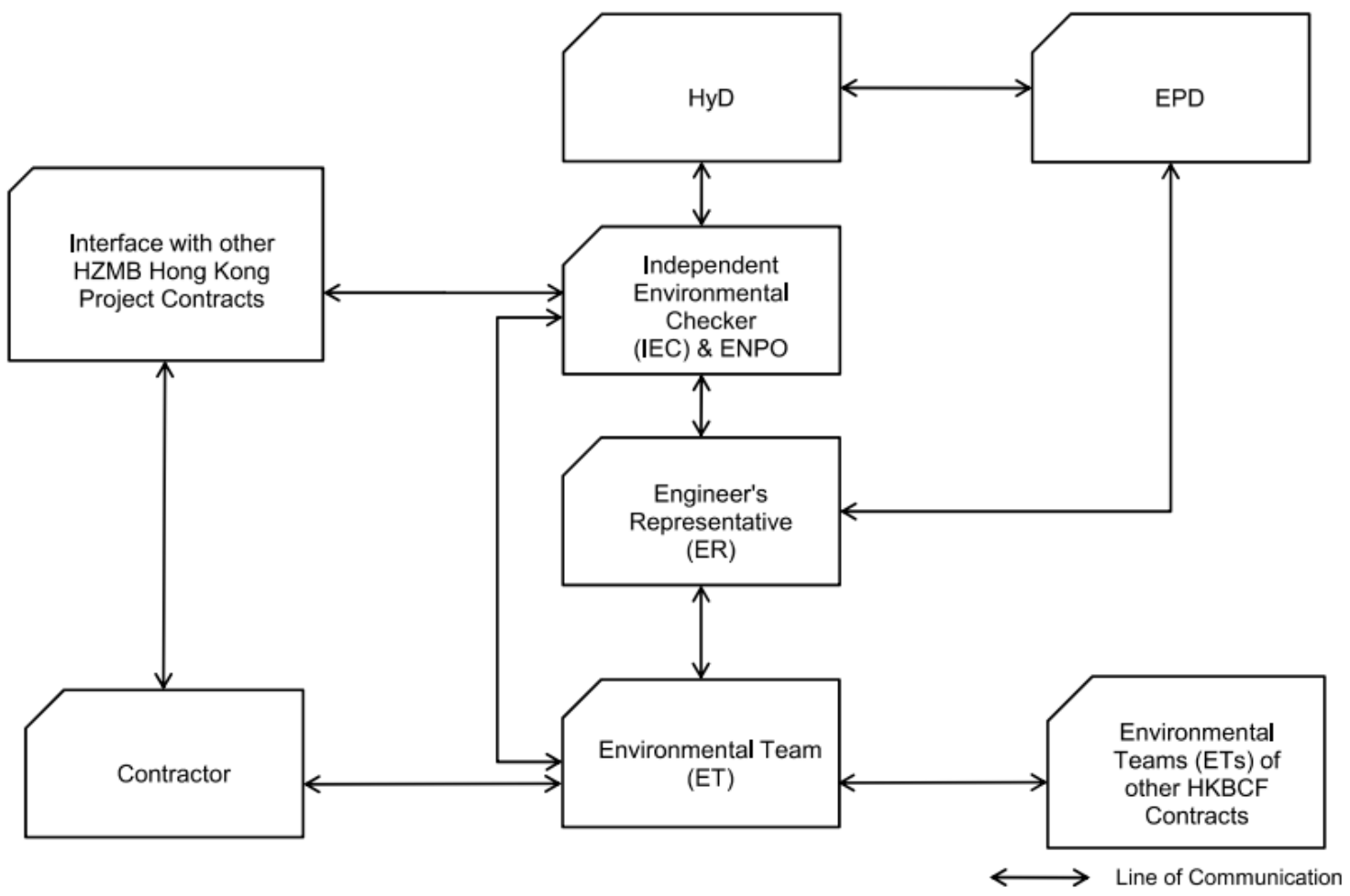
Construction Programme



# Appendix B

---

Project Organization Chart



# Appendix C

---

Event and Action Plan



## Event / Action Plan for Air Quality

EVENT	ACTION			
	ET	IEC	ER	CONTRACTOR
	ACTION LEVEL			
1. Exceedance for one sample	<ol style="list-style-type: none"> <li>1. Identify source, investigate the causes of exceedance and propose remedial measures;</li> <li>2. Inform IEC and ER;</li> <li>3. Repeat measurement to confirm finding;</li> <li>4. Increase monitoring frequency to daily.</li> </ol>	<ol style="list-style-type: none"> <li>1. Check monitoring data submitted by ET;</li> <li>2. Check Contractor's working method.</li> </ol>	<ol style="list-style-type: none"> <li>1. Notify Contractor.</li> </ol>	<ol style="list-style-type: none"> <li>1. Rectify any unacceptable practice;</li> <li>2. Amend working methods if appropriate.</li> </ol>
2. Exceedance for two or more consecutive samples	<ol style="list-style-type: none"> <li>1. Identify source;</li> <li>2. Inform IEC and ER;</li> <li>3. Advise the ER on the effectiveness of the proposed remedial measures;</li> <li>4. Repeat measurements to confirm findings;</li> <li>5. Increase monitoring frequency to daily;</li> <li>6. Discuss with IEC and Contractor on remedial actions required;</li> <li>7. If exceedance continues, arrange meeting with IEC and ER;</li> <li>8. If exceedance stops, cease additional monitoring.</li> </ol>	<ol style="list-style-type: none"> <li>1. Check monitoring data submitted by ET;</li> <li>2. Check Contractor's working method;</li> <li>3. Discuss with ET and Contractor on possible remedial measures;</li> <li>4. Advise the ET on the effectiveness of the proposed remedial measures;</li> <li>5. Supervise Implementation of remedial measures.</li> </ol>	<ol style="list-style-type: none"> <li>1. Confirm receipt of notification of failure in writing;</li> <li>2. Notify Contractor;</li> </ol>	<ol style="list-style-type: none"> <li>1. Submit proposals for remedial to ER within 3 working days of notification;</li> <li>2. Implement the agreed proposals;</li> <li>3. Amend proposal if appropriate.</li> </ol>

EVENT	ACTION			
	ET	IEC	ER	CONTRACTOR
	LIMIT LEVEL			
1. Exceedance for one sample	<ol style="list-style-type: none"> <li>1. Identify source, investigate the causes of exceedance and propose remedial measures;</li> <li>2. Inform ER, Contractor and EPD;</li> <li>3. Repeat measurement to confirm finding;</li> <li>4. Increase monitoring frequency to daily;</li> <li>5. Assess effectiveness of Contractor's remedial actions and keep IEC, EPD and ER informed of the results.</li> </ol>	<ol style="list-style-type: none"> <li>1. Check monitoring data submitted by ET;</li> <li>2. Check Contractor's working method;</li> <li>3. Discuss with ET and Contractor on possible remedial measures;</li> <li>4. Advise the ER on the effectiveness of the proposed remedial measures;</li> <li>5. Supervise implementation of remedial measures.</li> </ol>	<ol style="list-style-type: none"> <li>1. Confirm receipt of notification of failure in writing;</li> <li>2. Notify Contractor;</li> <li>3. Ensure remedial measures properly implemented.</li> </ol>	<ol style="list-style-type: none"> <li>1. Take immediate action to avoid further exceedance;</li> <li>2. Submit proposals for remedial actions to IEC within 3 working days of notification;</li> <li>3. Implement the agreed proposals;</li> <li>4. Amend proposal if appropriate.</li> </ol>
2. Exceedance for two or more consecutive samples	<ol style="list-style-type: none"> <li>1. Notify IEC, ER, Contractor and EPD;</li> <li>2. Identify source;</li> <li>3. Repeat measurement to confirm findings;</li> <li>4. Increase monitoring frequency to daily;</li> <li>5. Carry out analysis of Contractor's working procedures to determine possible mitigation to be implemented;</li> <li>6. Arrange meeting with IEC and ER to discuss the remedial actions to be taken;</li> <li>7. Assess effectiveness of Contractor's remedial actions and keep IEC, EPD and ER informed of the results;</li> <li>8. If exceedance stops, cease additional monitoring.</li> </ol>	<ol style="list-style-type: none"> <li>1. Discuss amongst ER, ET, and Contractor on the potential remedial actions;</li> <li>2. Review Contractor's remedial actions whenever necessary to assure their effectiveness and advise the ER accordingly;</li> <li>3. Supervise the implementation of remedial measures.</li> </ol>	<ol style="list-style-type: none"> <li>1. Confirm receipt of notification of failure in writing;</li> <li>2. Notify Contractor;</li> <li>3. In consultation with the IEC, agree with the Contractor on the remedial measures to be implemented;</li> <li>4. Ensure remedial measures properly implemented;</li> <li>5. If exceedance continues, consider what portion of the work is responsible and instruct the Contractor to stop that portion of work until the exceedance is abated.</li> </ol>	<ol style="list-style-type: none"> <li>1. Take immediate action to avoid further exceedance;</li> <li>2. Submit proposals for remedial actions to IEC within 3 working days of notification;</li> <li>3. Implement the agreed proposals;</li> <li>4. Resubmit proposals if problem still not under control;</li> <li>5. Stop the relevant portion of works as determined by the ER until the exceedance is abated.</li> </ol>

## Event / Action Plan for Construction Noise

EVENT	ACTION			
	ET	IEC	ER	CONTRACTOR
Action Level	<ol style="list-style-type: none"> <li>1. <u>Notify IEC and Contractor;</u></li> <li>2. <u>Identify source, investigate the causes of exceedance and propose remedial measures;</u></li> <li>3. Report the results of investigation to the IEC, ER and Contractor;</li> <li>4. Discuss with the Contractor and formulate remedial measures;</li> <li>5. Increase monitoring frequency to check mitigation effectiveness.</li> </ol>	<ol style="list-style-type: none"> <li>1. Review the analysed results submitted by the ET;</li> <li>2. Review the proposed remedial measures by the Contractor and advise the ER accordingly;</li> <li>3. Supervise the implementation of remedial measures.</li> </ol>	<ol style="list-style-type: none"> <li>1. Confirm receipt of notification of failure in writing;</li> <li>2. Notify Contractor;</li> <li>3. Require Contractor to propose remedial measures for the analysed noise problem;</li> <li>4. Ensure remedial measures are properly implemented</li> </ol>	<ol style="list-style-type: none"> <li>1. Submit noise mitigation proposals to IEC;</li> <li>2. Implement noise mitigation proposals.</li> </ol>
Limit Level	<ol style="list-style-type: none"> <li>1. <u>Inform IEC, ER, EPD and Contractor;</u></li> <li>2. <u>Identify source;</u></li> <li>3. Repeat measurements to confirm findings;</li> <li>4. Increase monitoring frequency;</li> <li>5. Carry out analysis of Contractor's working procedures to determine possible mitigation to be implemented;</li> <li>6. Inform IEC, ER and EPD the causes and actions taken for the exceedances;</li> <li>7. Assess effectiveness of Contractor's remedial actions and keep IEC, EPD and ER informed of the results;</li> <li>8. If exceedance stops, cease additional monitoring.</li> </ol>	<ol style="list-style-type: none"> <li>1. Discuss amongst ER, ET, and Contractor on the potential remedial actions;</li> <li>2. Review Contractors remedial actions whenever necessary to assure their effectiveness and advise the ER accordingly;</li> <li>3. Supervise the implementation of remedial measures.</li> </ol>	<ol style="list-style-type: none"> <li>1. Confirm receipt of notification of failure in writing;</li> <li>2. Notify Contractor;</li> <li>3. Require Contractor to propose</li> <li>4. remedial</li> <li>5. measures for the analysed noise problem;</li> <li>6. Ensure remedial measures properly implemented;</li> <li>7. If exceedance continues, consider what portion of the work is responsible and instruct the Contractor to stop that portion of work until the exceedance is abated.</li> </ol>	<ol style="list-style-type: none"> <li>1. Take immediate action to avoid further exceedance;</li> <li>2. Submit proposals for remedial actions to IEC within 3 working days of notification;</li> <li>3. Implement the agreed proposals;</li> <li>4. Resubmit proposals if problem still not under control;</li> <li>5. Stop the relevant portion of works as determined by the ER until the exceedance is abated.</li> </ol>

## Event / Action Plan for Dolphin Monitoring

EVENT	ACTION			
	ET	IEC	ER	CONTRACTOR
Action Level	<ol style="list-style-type: none"> <li>1. Repeat statistical data analysis to confirm findings;</li> <li>2. Review all available and relevant data, including raw data and statistical analysis results of other parameters covered in the EM&amp;A, to ascertain if differences are as a result of natural variation or previously observed seasonal differences;</li> <li>3. Identify source(s) of impact;</li> <li>4. Inform the IEC, ER/SOR and Contractor;</li> <li>5. Check monitoring data.</li> <li>6. Review to ensure all the dolphin protective measures are fully and properly implemented and advise on additional measures if necessary.</li> </ol>	<ol style="list-style-type: none"> <li>1. Check monitoring data submitted by ET and Contractor;</li> <li>2. Discuss monitoring results and finding with the ET and the Contractor.</li> </ol>	<ol style="list-style-type: none"> <li>1. Discuss monitoring with the IEC and any other measures proposed by the ET;</li> <li>2. If ER/SOR is satisfied with the proposal of any other measures, ER/SOR to signify the agreement in writing on the measures to be implemented.</li> </ol>	<ol style="list-style-type: none"> <li>1. Inform the ER/SOR and confirm notification of the non-compliance in writing;</li> <li>2. Discuss with the ET and the IEC and propose measures to the IEC and the ER/SOR;</li> <li>3. Implement the agreed measures.</li> </ol>

EVENT	ACTION			
	ET	IEC	ER	CONTRACTOR
Limit Level	<ol style="list-style-type: none"> <li>1. Repeat statistical data analysis to confirm findings;</li> <li>2. Review all available and relevant data, including raw data and statistical analysis results of other parameters covered in the EM&amp;A, to ascertain if differences are as a result of natural variation or previously observed seasonal differences;</li> <li>3. Identify source(s) of impact;</li> <li>4. Inform the IEC, ER/SOR and Contractor of findings;</li> <li>5. Check monitoring data;</li> <li>6. Repeat review to ensure all the dolphin protective measures are fully and properly implemented and advise on additional measures if necessary.</li> <li>7. If ET proves that the source of impact is caused by any of the construction activity by the works contract, ET to arrange a meeting to discuss with IEC, ER/SOR and Contractor the necessity of additional dolphin monitoring and/or any other potential mitigation measures (e.g., consider to modify the perimeter silt curtain or consider to control/temporarily stop relevant construction activity etc.) and submit to IEC a proposal of additional dolphin monitoring and/or mitigation measures where necessary.</li> </ol>	<ol style="list-style-type: none"> <li>1. Check monitoring data submitted by ET and Contractor;</li> <li>2. Discuss monitoring results and findings with the ET and the Contractor;</li> <li>3. Attend the meeting to discuss with ET, ER/SOR and Contractor the necessity of additional dolphin monitoring and any other potential mitigation measures.</li> <li>4. Review proposals for additional monitoring and any other mitigation measures submitted by ET and Contractor and advise ER/SOR of the results and findings accordingly.</li> <li>5. Supervise / Audit the implementation of additional monitoring and/or any other mitigation measures and advise ER/SOR the results and findings accordingly.</li> </ol>	<ol style="list-style-type: none"> <li>1. Attend the meeting to discuss with ET, IEC and Contractor the necessity of additional dolphin monitoring and any other potential mitigation measures.</li> <li>2. If ER/SOR is satisfied with the proposals for additional dolphin monitoring and/or any other mitigation measures submitted by ET and Contractor and verified by IEC, ER/SOR to signify the agreement in writing on such proposals and any other mitigation measures</li> <li>3. Supervise the implementation of additional monitoring and/or any other mitigation measures.</li> </ol>	<ol style="list-style-type: none"> <li>1. Inform the ER/SOR and confirm notification of the non-compliance in writing;</li> <li>2. Attend the meeting to discuss with ET, IEC and ER/SOR the necessity of additional dolphin monitoring and any other potential mitigation measures.</li> <li>3. Jointly submit with ET to IEC a proposal of additional dolphin monitoring and/or any other mitigation measures when necessary.</li> <li>4. Implement the agreed additional dolphin monitoring and/or any other mitigation measures.</li> </ol>

# Appendix D

---

Waste Flow Table

<b>Waste Flow Table for Year 2020</b>										
Monthly Ending	Actual Quantities of Inert C&D Materials Generated Monthly					Actual Quantities of Non-inert C&D Wastes Generated Monthly				
	Total Quantity Generated (Inert C&D)	Hard Rock and Large Broken Concrete	Reused in the Contract	Reused in other Projects	Disposed as Public Fill	Metals	Paper/ cardboard packaging	Plastics (see Note 2)	Chemical Waste	Others, e.g. general refuse
	(in '000 Kg)	(in '000 Kg)	(in '000 Kg)	(in '000 Kg)	(in '000 Kg)	(in '000 Kg)	(in '000 Kg)	(in '000 Kg)	(in '000 Kg)	(in '000 Kg)
2020 Jan	Nil	Nil	Nil	Nil	Nil	Nil	Nil	Nil	Nil	Nil
2020 Feb	720.34	Nil	720.34	Nil	Nil	Nil	0.335	Nil	Nil	2.23
2020 Mar	11344.57	Nil	10218.92	Nil	1125.65	Nil	0.669	Nil	Nil	8.05
2020 Apr	19649.37	Nil	18670.3	Nil	979.07	Nil	Nil	Nil	Nil	21.64
2020 May	26767.55	Nil	26692.04	Nil	75.51	Nil	2.42	Nil	Nil	196.64
2020 Jun	4628.13	Nil	4198.52	Nil	429.61	Nil	Nil	Nil	Nil	117.19
2020 Jul	4895.66	Nil	3398.41	Nil	1497.25	Nil	Nil	Nil	Nil	30.33
2020 Aug	4971.00	Nil	4774.49	Nil	196.51	Nil	0.418	Nil	Nil	36.91
2020 Sep	1175.26	Nil	736.1	Nil	439.16	Nil	Nil	Nil	Nil	36.16
2020 Oct	3433.83	Nil	Nil	2262.7	1171.13	Nil	Nil	Nil	Nil	32.25
2020 Nov	26481.72	Nil	Nil	24393.64	2088.08	Nil	Nil	Nil	Nil	40.09
2020 Dec	14361.90	Nil	Nil	13468.00	893.90	Nil	Nil	Nil	Nil	39.56
<b>Total</b>	<b>118429.33</b>	<b>0</b>	<b>69409.12</b>	<b>40124.34</b>	<b>8895.87</b>	<b>0</b>	<b>3.842</b>	<b>0</b>	<b>0</b>	<b>561.05</b>

Note:

- 1) The waste flow table shall also include C&D materials that are specified in the Contract to be imported for use at the Site.
- 2) Plastics refer to plastic bottles/containers, plastic sheets/foam from packaging materials.
- 3) Total Quantity Generated (Inert) = Hard Rock and Large Broken Concrete + Reused in the Contract + Disposed as Public Fill – Imported Fill

Waste Flow Table for Year 2021										
Monthly Ending	Actual Quantities of Inert C&D Materials Generated Monthly					Actual Quantities of Non-inert C&D Wastes Generated Monthly				
	Total Quantity Generated (Inert C&D)	Hard Rock and Large Broken Concrete	Reused in the Contract	Reused in other Projects	Disposed as Public Fill	Metals	Paper/ cardboard packaging	Plastics (see Note 2)	Chemical Waste	Others, e.g. general refuse
	(in '000 Kg)	(in '000 Kg)	(in '000 Kg)	(in '000 Kg)	(in '000 Kg)	(in '000 Kg)	(in '000 Kg)	(in '000 Kg)	(in '000 Kg)	(in '000 Kg)
2021 Jan	787.6	0	0	0	787.6	0	0	0	0	18.19
2021 Feb	254.95	0	0	0	254.95	0	0	0	0	154.94
2021 Mar	1899.61	0	0	1720.5	179.11	0	0	0	0	371.73
2021 Apr	4056.27	0	0	0	4056.27	2.13	8.17	0	0	144.08
2021 May	2738.81	0	0	0	2738.81	0.495	0	0	0	31.63
2021 Jun	1009.53	0	0	0	1009.53	0	0	0	0	90.91
2021 Jul	1384.29	0	0	0	1384.29	0	0	0	0	51.69
2021 Aug	340.46	0	0	0	340.46	5.85	0	0	0	42.99
2021 Sep	732.9	0	0	0	732.9	0	0	0	0	70.11
2021 Oct	1023.81	0	0	0	1023.81	0	0	0	0	74.68
2021 Nov	1155.56	0	0	0	1155.56	3.195	0	0	0	121.99
2021 Dec	271.67	0	0	0.00	271.67	0	0	0	0	70.97
<b>Total</b>	<b>15655.46</b>	<b>0</b>	<b>0</b>	<b>1720.5</b>	<b>13934.96</b>	<b>11.665</b>	<b>8.17</b>	<b>0</b>	<b>0</b>	<b>1243.91</b>

Note:

- 1) The waste flow table shall also include C&D materials that are specified in the Contract to be imported for use at the Site.
- 2) Plastics refer to plastic bottles/containers, plastic sheets/foam from packaging materials.
- 3) Total Quantity Generated (Inert) = Hard Rock and Large Broken Concrete + Reused in the Contract + Disposed as Public Fill – Imported Fill



Waste Flow Table for Year 2022										
Monthly Ending	Actual Quantities of Inert C&D Materials Generated Monthly					Actual Quantities of Non-inert C&D Wastes Generated Monthly				
	Total Quantity Generated (Inert C&D)	Hard Rock and Large Broken Concrete	Reused in the Contract	Reused in other Projects	Disposed as Public Fill	Metals	Paper/ cardboard packaging	Plastics (see Note 2)	Chemical Waste	Others, e.g. general refuse
	(in '000 Kg)	(in '000 Kg)	(in '000 Kg)	(in '000 Kg)	(in '000 Kg)	(in '000 Kg)	(in '000 Kg)	(in '000 Kg)	(in '000 Kg)	(in '000 Kg)
2022 Jan	167.72	0	0	0	167.72	0	0	0	0	58.92
2022 Feb	50.85	0	0	0	50.85	0	0	0	0	20.48
2022 Mar	10.10	0	0	0	10.10	0	0	0	0	16.46
2022 Apr	154.27	0	0	0	154.27	0	0	0	0	20.09
2022 May	186.03	0	0	0	186.03	0	0	0	0	6.33
2022 Jun	7.86	0	0	0	7.86	0	0	0	0	8.08
2022 Jul	0	0	0	0	0	0	0	0	0	0
2022 Aug	0	0	0	0	0	0	0	0	0	0
2022 Sep	0	0	0	0	0	0	0	0	0	0
2022 Oct										
2022 Nov										
2022 Dec										
<b>Total</b>	<b>576.83</b>	<b>0</b>	<b>0</b>	<b>0</b>	<b>576.83</b>	<b>0</b>	<b>0</b>	<b>0</b>	<b>0</b>	<b>130.36</b>

Note:

- 1) The waste flow table shall also include C&D materials that are specified in the Contract to be imported for use at the Site.
- 2) Plastics refer to plastic bottles/containers, plastic sheets/foam from packaging materials.
- 3) Total Quantity Generated (Inert) = Hard Rock and Large Broken Concrete + Reused in the Contract + Disposed as Public Fill – Imported Fill

# Appendix E

---

Implementation Status of Environment Mitigation  
Measures (Operation Phase)

Implementation Status of Environment Mitigation Measures (Construction Phase) - Contract No. HY/2019/01

EIA Ref.	EM&A Log Ref.	Recommended Mitigation Measures	Location / Duration of Measures	Implementation Status
<b>Landscape &amp; Visual (Operation Phase)</b>				
S14.3.3.3	LV4	<u>Mitigate both Landscape and Visual Impacts</u> G10. Provide proper planting maintenance on the new planting areas to enhance the aesthetic degree.	Operational stage	Implemented
<b>Waste Management (Operational Waste)</b>				
S8.4.3	WM6	<u>Chemical Waste</u> The requirements given in the Code of Practice on the Packaging, Labelling and Storage of Chemical Wastes should be followed in handling of these chemical wastes. A trip-ticket system should be operated in accordance with the Waste Disposal (Chemical Waste) (General) Regulation to monitor all movements of chemical wastes which will be collected by a licensed collector to a licensed facility for final treatment and disposal.	Operational stage	Implemented

# Appendix F

---

Cumulative statistics on Environmental Complaints,  
Notifications of Summons and Successful Prosecutions

### Environmental Complaints Log

Reference No.	Date of Complaint Received	Received From	Received By	Nature of Complaint	Date of Investigation	Outcome	Date of Reply

### Cumulative Statistics on Complaints

Environmental Parameters	Cumulative No. Brought Forward	No. of Complaints This Month	Cumulative Project-to-Date
Air	0	0	0
Noise	0	0	0
Water	0	0	0
Waste	0	0	0
<b>Total</b>	<b>0</b>	<b>0</b>	<b>0</b>

### Cumulative Statistics on Notification of Summons and Successful Prosecutions

Environmental Parameters	Cumulative No. Brought Forward	No. of Notification of Summons and Prosecutions This Month	Cumulative Project-to-Date
Air	0	0	0
Noise	0	0	0
Water	0	0	0
Waste	0	0	0
<b>Total</b>	<b>0</b>	<b>0</b>	<b>0</b>

# Appendix G (Not Applicable)

---

Summary of Site Audit in the Reporting Month

# Appendix H (Not Applicable)

---

Outstanding Issues and Deficiencies

# Appendix I

---

Environmental Monitoring Schedule



**Project: Contract No. HY/2019/01 - Hong Kong-Zhuhai-Macao Bridge Hong Kong Boundary Crossing Facilities – Phase 2 and Other Works**

**Impact Monitoring Schedule (September 2022)**

Sun	Mon	Tue	Wed	Thur	Fri	Sat
				1	2	3
4	5	6	7	8	9	10
11	12	13	14	15	16	17
18	19	20	21	22	23	24
25	26	27	28	29	30	

**Remarks**

- As informed by AECOM, the commencement date of the 12-month establishment period for the landscape monitoring under this contract is 5 January 2022. Bi-monthly landscape and visual site audits will be conducted from 5 Jan 2022 to 4 Jan 2023.

**Project: Contract No. HY/2019/01 - Hong Kong-Zhuhai-Macao Bridge Hong Kong Boundary Crossing Facilities – Phase 2 and Other Works**

**Impact Monitoring Schedule (October 2022)**

Sun	Mon	Tue	Wed	Thur	Fri	Sat
						1
2	3	4	5	6	7	8
9	10	11	12	13	14	15
16	17	18	19	20	21	22
23	24	25	26	27	28	29
30	31 <b>Bi-monthly landscape and visual site audit</b>					

**Remarks**

- As informed by AECOM, the commencement date of the 12-month establishment period for the landscape monitoring under this contract is 5 January 2022. Bi-monthly landscape and visual site audits will be conducted from 5 Jan 2022 to 4 Jan 2023.