



Highways Department  
5th Floor, Ho Man Tin Government Offices  
88 Chung Hau Street  
Ho Man Tin  
Kowloon

Your reference:

Our reference: HKHYD203/50/108427

Date: 2 December 2022

Attention: Mr Eric Wong

**BY EMAIL & POST**  
**(email: se4.mwsd@hyd.gov.hk)**

Dear Sirs

Agreement No. HMWSD 6/2022 (EP)  
Environmental Project Office for the Hong Kong-Zhuhai-Macao Bridge  
Hong Kong Link Road, Hong Kong-Zhuhai-Macao Bridge Hong Kong Boundary  
Crossing Facilities & Tuen Mun-Chek Lap Kok Link – Investigation

Contract No. HY/2019/01  
Hong Kong-Zhuhai-Macao Bridge Hong Kong Boundary Crossing Facilities  
– Phase 2 and Other Works  
Quarterly EM&A Report (June 2021 – August 2021)

We refer to the email of 23 November 2022, attaching the Quarterly EM&A Report (June 2021 – August 2021), prepared by the Environmental Team (ET) of the captioned.

We have no comment and hereby verify the Proposal in accordance with Clause 5.4 of the Environmental Permit no. EP-353/2009/K.

Should you have any queries, please do not hesitate to contact the undersigned or our Mr Macavity Yau on 2618 2831.

Yours faithfully  
ANEWR CONSULTING LIMITED

James Choi  
Independent Environmental Checker

CPSJ/LCCR/YCFM/lsm

cc Highways Department – Mr Tony Wong (Fax no.: 3188 6614)  
Highways Department – Mr YF Lau (Fax no.: 3188 6614)  
AECOM Asia Co. Ltd. – Mr KP Wong (Fax no.: 2218 7399)  
Fugro Technical Services Limited – Mr Calvin Leung (Fax no.: 2450 6138)

**ANewR Consulting Limited**  
Unit 517, 5/F, Tower A, Regent Centre  
63 Wo Yi Hop Road, Kwai Chung, Hong Kong  
Tel: (852) 2618 2831 Fax: (852) 3007 8648  
Email: [info@anewr.com](mailto:info@anewr.com)  
Web: [www.anewr.com](http://www.anewr.com)





FUGRO TECHNICAL SERVICES LIMITED  
Fugro Development Centre  
5 Lok Yi Street, Tai Lam  
Tuen Mun, NT  
Hong Kong

Date 14 October 2022  
Our Ref. MCL/ED/0398/2022/C

Ramboll Hong Kong Limited  
21/F, BEA Harbour View Centre,  
56 Gloucester Road,  
Wan Chai, Hong Kong

BY EMAIL

Attn.: Mr. Brian Tam, Independent Environmental Checker

Dear Sir,

**Quarterly EM&A Report for  
Hong Kong-Zhuhai-Macao Bridge Hong Kong Boundary Crossing Facilities – Phase 2 and  
Other Works (Contract No. HY/2019/01)**

Pursuant to Section 16.4 of the updated EM&A Manual for Hong Kong Boundary Crossing Facilities covering the captioned project, we hereby submit the certified Quarterly EM&A Report for June 2021 to August 2021 for your verification.

Thank you for your attention, should there be any comments or queries, please contact our Mr. Cyrus Lai at 3565-4442 or the undersigned at 3565-4441.

Yours faithfully,  
for and on behalf of  
FUGRO TECHNICAL SERVICES LIMITED

Calvin Leung  
Environmental Team Leader

c.c.	AECOM	Attn: Mr. Jason Yu, Mr. Gordon Kok
	Ramboll	Attn: Mr. Y. H. Hui, Mr. K. C. Chan
	CHEC	Attn: Mr. Marko Chan, Mr. Matthew Wu



---

## Quarterly EM&A Report (June 2021 - August 2021)

0002/20/ED/0476 02 |

**Contact No. HY/2019/01 Hong Kong-Zhuhai-Macao Bridge Hong Kong Boundary Crossing Facilities – Phase 2 and Other Works**

# Document Control



## Document Information

Project Title	Hong Kong-Zhuhai-Macao Bridge Hong Kong Boundary Crossing Facilities – Phase 2 and Other Works (Contract No. HY/2019/01)
Document Title	Quarterly EM&A Report (June 2021 - August 2021)
Fugro Project No.	0002/20
Fugro Document No.	0002/20/ED/0476
Issue Number	02

## Client Information

Client	China Harbour Engineering Co., Ltd. - Contract No. HY/2019/01
Client Address	China Harbour Building, 370-4 King's Road, North Point Hong Kong
Client Contact	Matthew Wu

## Environmental Team

Initials	Name	Role	Signature
MP	Calvin M.P. Leung	Environmental Team Leader	
CY	Cyrus C.Y. Lai	Senior Environmental Consultant	
KH	Toby K.H. Wan	Assistant Environmental Consultant	

---

## EXECUTIVE SUMMARY

This Quarterly Environmental Monitoring and Audit (EM&A) Report is prepared for Contract No. HY/2019/01 "Hong Kong-Zhuhai-Macao Bridge Hong Kong Boundary Crossing Facilities – Phase 2 and Other Works" (hereafter referred to as "the Contract") for the Highways Department of Hong Kong Special Administrative Region (HKSAR). Contract No. HY/2019/01 was awarded to China Harbour Engineering Co. Limited and Fugro Technical Services Limited (FTS) was appointed as the Environmental Team (ET) by the Contractor.

Contract No. HY/2019/01 is part of the "Hong Kong-Zhuhai-Macao Bridge Hong Kong Boundary Crossing Facilities" (HZMB HKBCF) Project which is a "Designated Project" under Schedule 2 of the Environmental Impact Assessment (EIA) Ordinance (Cap. 499) and for which an EIA Report (Register No. AEIAR-145/2009) was prepared and approved. The current Environmental Permit (EP) for HKBCF, namely No. EP-353/2009/K, was issued on 11 April 2016. These documents are available through the EIA Ordinance Register. Commencement of the Contract took place on 4 December 2019 and the construction site preparation works commenced in early February 2020.

Fugro Technical Services Limited (FTS) has been appointed by the Contractor to implement the Environmental Monitoring & Audit (EM&A) programme for the Contract in accordance with the Updated EM&A Manual for HKBCF (Version 1.0) and is providing environmental team services for the Contract.

This is the 6th Quarterly EM&A Report for the Contract which summaries findings of the EM&A programme during the reporting period from 1 June 2021 to 31 August 2021.

### **Environmental Monitoring and Audit Progress**

The Quarterly EM&A programme was undertaken in accordance with the Updated EM&A Manual for HKBCF (Version 1.0). It should be noted that the air quality, noise and the post-construction dolphin monitoring works for the Contract are covered by Contract No. HY/2019/01 "Hong Kong-Zhuhai-Macao Bridge Hong Kong Boundary Crossing Facilities – Phase 2 and Other Works". The ET of the Contract or another ET of the HZMB project is required to conduct impact air quality monitoring at AMS6 as part of EM&A programme if the impact air quality monitoring work is no longer covered by Contract No. HY/2011/03 respectively. However, this is subject to ENPO's final decision on which ET should carry out the monitoring work at these stations.

### **Breaches of Action and Limit Levels**

No Action and Limit Level exceedance was recorded for air quality monitoring in the reporting period. Also, no Action and Limit Level exceedance was recorded for construction noise monitoring in the reporting period.

### **Complaint Log**

No complaints were received in the reporting period.

### **Notifications of any Summons and Successful Prosecutions**

No notifications of summons and prosecutions were received in the reporting period.

**Reporting Change**

No reporting change in the reporting period.

# Contents

<b>EXECUTIVE SUMMARY</b>	<b>1</b>
<b>1. INTRODUCTION</b>	<b>5</b>
1.1 Background	5
1.2 Project Description	5
1.3 Project Organization	6
1.4 Construction Programme and Activities	6
1.5 Works undertaken during the report period	6
<b>2. EM&amp;A REQUIREMENTS</b>	<b>7</b>
2.1 Summary of EM&A Requirement	7
2.2 Monitoring Requirement	8
2.3 Action and Limit Levels	8
2.4 Event and Action Plans	8
2.5 Mitigation Measures	8
<b>3. ENVIRONMENTAL MONITORING AND AUDIT</b>	<b>9</b>
3.1 Air Quality Monitoring Results	9
3.2 Noise Monitoring Results	9
3.3 Ecology Monitoring	9
3.4 Site Inspection	9
3.5 Advice on the Solid and Liquid Waste Management Status	9
<b>4. ENVIRONMENTAL COMPLAINT AND NON-COMPLIANCE</b>	<b>11</b>
4.1 Environmental Exceedance	11
4.2 Complaints, Notification of Summons and Prosecution	11
<b>5. CONCLUSION AND RECOMMENDATION</b>	<b>12</b>
5.1 Conclusions	12
5.2 Comment and Recommendations	12

---

## Tables

Table 1.1 Contact Information of Key Personnel

---

Table 2.1 Air Quality and Noise Monitoring Location

---

---

## Figures

Figure 1 The Site Layout Plan of the Contract

---

Figure 2 The Location of the Air Quality Monitoring Station

---

Figure 3 The Location of the Noise Monitoring Station

---

Figure 4 Post-Construction Dolphin Monitoring Line Transect Layout Map

---

---

## Appendices

Appendix A Construction Programme

---

Appendix B Project Organization Chart

---

Appendix C Action and Limit Levels

---

Appendix D Event and Action Plan

---

Appendix E Implementation Status of Environment Mitigation Measures (Construction Phase)

---

Appendix F Summary of Site Audit in the Reporting Period

---

Appendix G Waste Flow Table

---

Appendix H Cumulative statistics on Environmental Complaints, Notifications of Summons and Successful Prosecutions

---



# 1. INTRODUCTION

## 1.1 Background

- 1.1.1 Fugro Technical Services Limited was commissioned by China Harbour Engineering Co. Limited (also referred to as “the Contractor”) to undertake the Environmental Team (ET) services (including environmental monitoring and audit (EM&A)) for Contract No. HY/2019/01 “Hong Kong-Zhuhai-Macao Bridge Hong Kong Boundary Crossing Facilities – Phase 2 and Other Works”.
- 1.1.2 Contract No. HY/2019/01 is part of the “Hong Kong-Zhuhai-Macao Bridge Hong Kong Boundary Crossing Facilities” (HZMB HKBCF) Project which is a “Designated Project” under Schedule 2 of the Environmental Impact Assessment (EIA) Ordinance (Cap. 499) and for which an EIA Report (Register No. AEIAR-145/2009) was prepared and approved. The current Environmental Permit (EP) for HKBCF, namely No. EP-353/2009/K, was issued on 11 April 2016. These documents are available through the EIA Ordinance Register. The general layout of the Project area is shown in **Figure 1**. Commencement of the Contract took place on 4 December 2019 and the construction site preparation works commenced in early February 2020.
- 1.1.3 This is the 6th Quarterly EM&A report to document the findings of site inspection activities and EM&A programme carried out by the Contractor of Contract No. HY/2019/01 from 1 June 2021 to 31 August 2021 (reporting period) and is submitted to fulfil Condition 5.4 of the EP.

## 1.2 Project Description

- 1.2.1 The works to be executed under Contract No. HY/2019/01 include the following major items:
- Landscaping and establishment works;
  - Irrigation system and associated drainage pumping system and facilities;
  - Erection and installation in the Passenger Clearance Building;
  - Public transport interchange (PTI) public toilet, satellite refuse collection point (RCP) and observation guard booths;
  - PTI cross boundary shuttle (CBS) / cross boundary coach (CBC) lanes and covered walkway;
  - Vehicle clearance plazas (VCP) vehicle kiosks and associate automatic vehicle clearance supporting system (AVCSS).

## 1.3 Project Organization

1.3.1 The Project Organization structure is shown in **Appendix B**. The key personnel contact names and numbers are summarized in **Table 1.1**.

Table 1.1 Contact Information of Key Personnel

Party	Position	Name	Telephone
Engineer or Engineer's Representative (AECOM Asia Co. Ltd.)	Senior Resident Engineer	Mr. Jason Yu	3748 8903
	Resident Engineer	Mr. Winston Wong	3748 8918
	Resident Engineer	Mr. Gordon Kok	3748 8967
Environmental Project Office / Independent Environmental Checker (Ramboll Hong Kong Limited)	Environmental Project Office Leader	Mr. Y. H. Hui	3465 2888
	Independent Environmental Checker (IEC)	Mr. Brian Tam	9700 6767
	Environmental Site Supervisor	Mr. K. C. Chan	3465 2882
Contractor (China Harbour Engineering Co. Ltd)	Environmental Manager	Mr. Marko Chan	9427 2879
	Environmental Officer	Mr. Matthew Wu	6076 2675
Environmental Team (Fugro Technical Services Limited)	Environmental Team Leader (ETL)	Mr. Calvin Leung	3565 4441

## 1.4 Construction Programme and Activities

1.4.1 The site layout plan of the Contract is shown in **Figure 1**.

1.4.2 The construction programme of this Contract is shown in **Appendix A**.

## 1.5 Works undertaken during the report period

1.5.1 The main construction works carried out in the reporting period were as follow:

- Excavation at Vehicle Clearance Plaza (VCP) (land-based);
- Road & Drain works at South Public Transport Interchanges (SPTI), North Public Transport Interchanges (NPTI) and Vehicle Clearance Plaza (VCP) (land-based);
- Covered Walkway at South Public Transport Interchanges (SPTI) and North Public Transport Interchanges (NPTI) (land-based);
- Public Toilet at North Public Transport Interchanges (NPTI) (land-based);
- Kiosks Construction at Vehicle Clearance Plaza (VCP) (land-based);
- Landscape Works at G1 and G5 (land-based);
- Conceal Conduits Works at Vehicle Clearance Plaza (VCP) (land-based);
- E&M Works at South Public Transport Interchanges (SPTI) (land-based);
- Irrigation System at G1 and G5 (land-based).

## 2. EM&A REQUIREMENTS

### 2.1 Summary of EM&A Requirement

- 2.1.1 The Quarterly EM&A programme was undertaken in accordance with the Updated EM&A Manual for HKBCF (Version 1.0). It should be noted that the air quality, noise and the post-construction dolphin monitoring works for the Contract are covered by Contract No. HY/2019/01 "Hong Kong-Zhuhai-Macao Bridge Hong Kong Boundary Crossing Facilities – Phase 2 and Other Works".
- 2.1.2 According to the Contract Specific EM&A Manual, air quality monitoring at station AMS2, AMS3C and AMS7B, and noise monitoring at station NMS2 and NMS3C are covered by Contract No. HY/2019/01. It should be noted that the air quality monitoring at station AMS6 is covered by Contract No. HY/2011/03. The ET of the Contract or another ET of the HZMB project is required to conduct impact air quality monitoring at AMS6 as part of EM&A programme if the impact air quality monitoring work is no longer covered by Contract No. HY/2011/03 respectively. However, this is subject to ENPO's final decision on which ET should carry out the monitoring work at these stations.
- 2.1.3 The most updated air and noise locations are summarized in **Table 2.1**. The locations of the air quality and noise monitoring stations shown in **Figure 2** and **Figure 3**, respectively.

Table 2.1 Air Quality and Noise Monitoring Location

Environmental Monitoring	Monitoring Station	Location
Air Quality	AMS2	Tung Chung Development Pier
	AMS3C	Ying Tung Estate Market Rooftop
	AMS6	Dragonair / CNAC (Group) Building (HKIA)
	AMS7B	Third Runway Site Office
Noise	NMS2	Seaview Crescent
	NMS3	Ying Tung Estate Refuse Collection Point

Remarks:

1. The ET of this Contract should conduct impact air quality monitoring at station AMS6 listed in the table as part of EM&A programme according to latest notification from ENPO when the monitoring station is no longer covered by another ET of the HZMB project.
2. The Limit Levels for schools will be applied for NMS3C.

2.1.4 According to the Proposal on Post-construction Dolphin Monitoring (PCDM) prepared by Contract No. HY/2013/ 04 which has been verified by ENPO and approved by EPD on 8 March 2019 (EPD ref. () in Ax(5) to E771/E1/100) , the completion date of the PCDM is in February 2021. Therefore, the reporting of Chinese White Dolphins (CWD) monitoring works under this contract was completed on 1 March 2021.

## 2.2 Monitoring Requirement

2.2.1 The monitoring requirements, monitoring equipment, monitoring parameters, frequency and duration, monitoring methodology, monitoring schedule, meteorological information are detailed in the monthly EM&A report prepared for this Contract.

2.2.2 The air quality monitoring requirements, monitoring equipment, monitoring parameters, frequency and duration, monitoring methodology, monitoring schedule, meteorological information for AMS6 are detailed in the monthly EM&A report prepared for Contract No. HY/2011/03.

## 2.3 Action and Limit Levels

2.3.1 The Action and Limit Levels for noise impact monitoring have been set and are presented in **Appendix C**.

## 2.4 Event and Action Plans

2.4.1 The event and action plans for air quality and noise monitoring are presented in **Appendix D**.

## 2.5 Mitigation Measures

2.5.1 The Contractor had implemented environmental mitigation measures and requirements as stated in the EIA Reports, the EP and EM&A Manuals. The implementation status of the environmental mitigation measures during the reporting period is summarized in **Appendix E**.

## 3. ENVIRONMENTAL MONITORING AND AUDIT

### 3.1 Air Quality Monitoring Results

- 3.1.1 1-hour TSP and 24-hour TSP impact monitoring at AMS2, AMS3C and AMS7B were carried out in the reporting period, the monitoring results are reported in the monthly EM&A Report prepared for this Contract.
- 3.1.2 There was no Action / Limit Level exceedance of 1-hour TSP level and 24-hour TSP level at AMS2, AMS3C and AMS7B was recorded during the reporting period.
- 3.1.3 The monitoring results for AMS6 are reported in the monthly EM&A Reports prepared for Contract No. HY/2011/03.
- 3.1.4 Summary of Action and Limit Level exceedance of 1-hour TSP level and 24-hour TSP level at AMS6 shall be referred to the monthly EM&A report prepared by Contract No. HY/2011/03.

### 3.2 Noise Monitoring Results

- 3.2.1 Construction noise monitoring were carried out in the reporting period, the monitoring results for NMS2 and NMS3C are reported in the monthly EM&A Reports prepared for this Contract.
- 3.2.2 There was no Action / Limit Level exceedance for construction noise at NMS2 and NMS3C was recorded during the reporting period.
- 3.2.3 School calendar of Ho Yu College was checked against noise monitoring days at NMS3C.

### 3.3 Ecology Monitoring

- 3.3.1 According to the Proposal on Post-construction Dolphin Monitoring (PCDM) prepared by Contract No. HY/2013/04 which has been verified by ENPO and approved by EPD on 8 March 2019 (EPD ref. () in Ax(5) to E771/E1/100) , the completion date of the PCDM is in February 2021. Therefore, the reporting of Chinese White Dolphins monitoring works under this contract was suspended on 1 March 2021.

### 3.4 Site Inspection

- 3.4.1 Site inspections were carried out weekly to monitor the implementation of proper environmental pollution control and mitigation measures for the Project. A summary of the mitigation measures implementation schedule is provided in **Appendix E**.
- 3.4.2 13 weekly environmental site inspections were carried out in the reporting period. Details of observations recorded during the site inspections are presented in **Appendix F**.
- 3.4.3 7 Bi-weekly Landscape and Visual Site audits were carried out by a Registered Landscape Architect in the reporting period.

### 3.5 Advice on the Solid and Liquid Waste Management Status

- 3.5.1 The Contractor registered as a chemical waste producer for the Contract. Sufficient numbers of receptacles were available for general refuse collection and sorting.
- 3.5.2 The summary of waste flow table is detailed in **Appendix G**.
- 3.5.3 If off-site disposal is required, the excavated marine mud from the land-based works shall be disposed of at the designated disposal sites within Hong Kong as allocated by the Marine Fill Committee or other locations as agreed by the Director. The Contractor shall ensure no spilling and overflowing of materials during loading / unloading / transportation is allowed.

The Contractor was reminded that chemical waste containers should be properly treated and stored temporarily in designated chemical waste storage area on site in accordance with the Code of Practice on the Packing, Labelling and Storage of Chemical Waste.

## 4. ENVIRONMENTAL COMPLAINT AND NON-COMPLIANCE

### 4.1 Environmental Exceedance

- 4.1.1 No Action and Limit Level exceedance of 1-hr TSP level and 24-hr TSP level recorded at station AMS2, AMS3C and AMS7B in the reporting period.
- 4.1.2 Summary of Action and Limit Level exceedance of 1-hour TSP level and 24-hour TSP level at AMS6 shall be referred to the monthly EM&A report prepared by Contract No. HY/2011/03.
- 4.1.3 No Action / Limit Level exceedance for construction noise at NMS2 and NMS3C was recorded during the reporting period.

### 4.2 Complaints, Notification of Summons and Prosecution

- 4.2.1 No environmental complaint, notification of summons and successful prosecution were received in the reporting period.
- 4.2.2 Cumulative complaint log, summaries of complaints, notification of summons and successful prosecutions are presented in **Appendix H**.

## 5. CONCLUSION AND RECOMMENDATION

### 5.1 Conclusions

- 5.1.1 1-hour TSP and 24-hour TSP impact monitoring at AMS2, AMS3C and AMS7B were carried out in the reporting period, no Action / Limit Level exceedance was recorded during the period.
- 5.1.2 Summary of Action and Limit Level exceedance of 1-hour TSP level and 24-hour TSP level at AMS6 shall be referred to the monthly EM&A report prepared by Contract No. HY/2011/03.
- 5.1.3 Construction noise monitoring were carried out in the reporting period, no Action / Limit Level exceedance was recorded during the period.
- 5.1.4 13 weekly environmental site inspections were carried out in the reporting period. Recommendations on mitigation measures for air quality impact, water quality impact and chemical and waste management were given to the Contractor for remediating the deficiencies identified during the site inspections.
- 5.1.5 7 Bi-weekly Landscape and Visual Site audits were carried out by a Registered Landscape Architect in the reporting period.
- 5.1.6 Referring to the Contractor's information, no environmental complaint, notification of summons and successful prosecution was received in the reporting period.

### 5.2 Comment and Recommendations

- 5.2.1 The recommended environmental mitigation measures, as proposed in the EIA reports and EM&A Manuals shall be effectively implemented to minimize the potential environmental impacts from the Project. The EM&A programme would effectively monitor the environmental impacts generated from the construction activities and ensure the proper implementation of mitigation measures.



5.2.2 According to the environmental site inspections performed in the reporting period, the following recommendations were provided:

Air Quality Impact

- Spent bags of cement should be removed or covered.
- Temporarily stockpile should be covered.
- Water spray should be provided at the exposed area.
- Cement materials should be stored properly or covered.
- Cement bag should be cleared as soon as possible.

Construction Noise Impact

- No specific observation was identified in the reporting period.

Water Quality Impact

- Stagnant water should be cleared after raining.
- Stockpile should be covered to prevent surface runoff.
- Stagnant water in drip tray should be cleared.
- Sandbag should be provided near the drainage to prevent surface runoff.

Chemical and Waste Management

- Temporary waste container should be provided for good housekeeping.
- Waste Container should be provided for good housekeeping.
- Waste generated at the site should be collected and cleared regularly.

Landscape and Visual Impact

- No specific observation was identified in the reporting period.

Permit/ Licenses

- No specific observation was identified in the reporting month.

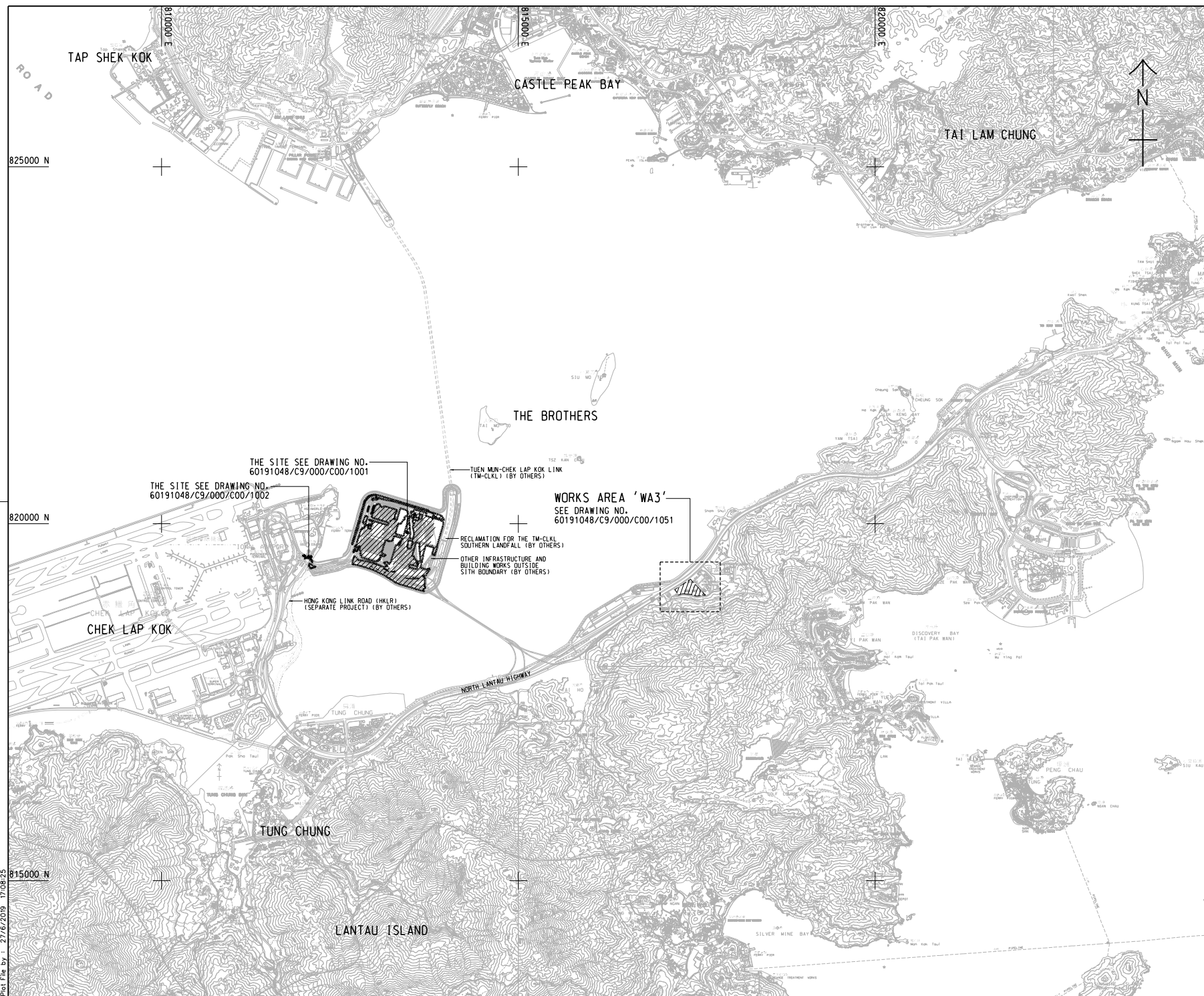
Others

- No specific observation was identified in the reporting period.

# Figure 1

---

The Site Layout Plan of the Contract



- NOTES:**
- COORDINATES ARE RELATED TO HONG KONG METRIC GRID (1980).
  - DIMENSIONS ARE IN MILLIMETER AND CHAINAGE ARE IN METRES UNLESS OTHERWISE SHOWN.

**LEGEND:**

- [Hatched Box] SITE BOUNDARY
- [Hatched Box] WORKS AREA

THE SITE SEE DRAWING NO. 60191048/C9/000/C00/1001

THE SITE SEE DRAWING NO. 60191048/C9/000/C00/1002

WORKS AREA 'WA3' SEE DRAWING NO. 60191048/C9/000/C00/1051

TUEN MUN-CHEK LAP KOK LINK (TM-CKLK) (BY OTHERS)

RECLAMATION FOR THE TM-CKLK SOUTHERN LANDFALL (BY OTHERS)

OTHER INFRASTRUCTURE AND BUILDING WORKS OUTSIDE SITE BOUNDARY (BY OTHERS)

HONG KONG LINK ROAD (HKLR) (SEPARATE PROJECT) (BY OTHERS)

REV. NO.	DESCRIPTION	BY	DATE
-	TENDER DRAWING	TTHK	JUL 19

**香港高速公路局**  
**HIGHWAYS DEPARTMENT**  
 主要工程管理處 (傳真與函)  
 Major Works Project Management Office (Special Duties)

**香港-珠海-澳門大橋**  
**HONG KONG-ZHUHAI-MACAO BRIDGE**  
 香港-珠海-澳門大橋過境設施  
 - PHASE 2 AND OTHER WORKS

**SITE LOCATION PLAN**

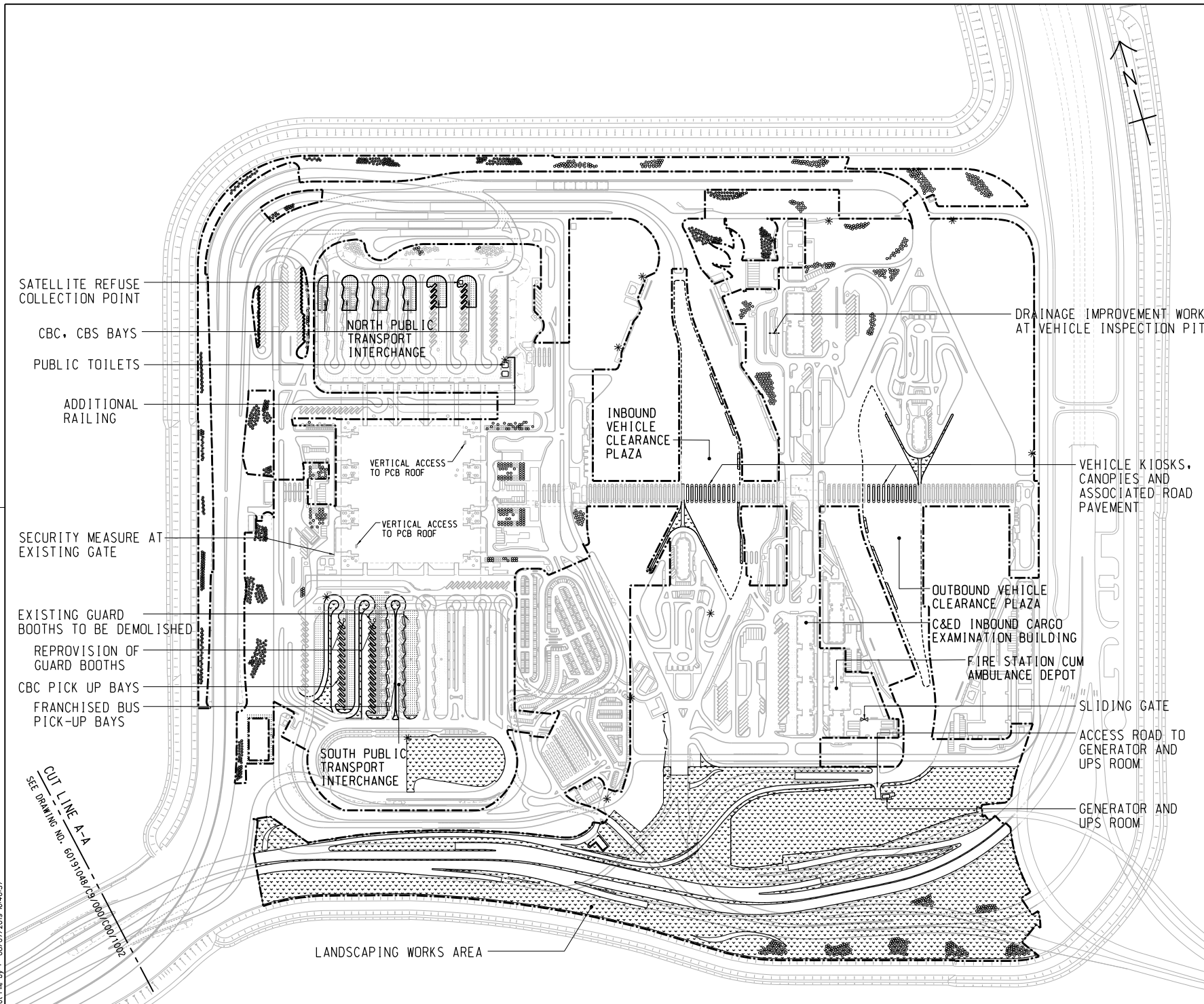
**AECOM** +  
 Rogers Stirk Harbour + Partners  
**Aedas**  
 BURO HAPPOLD ATKINS ADI +

DRG. NO. 60191048/C9/000/C00/1000  
 圖紙編號

DESIGNED BY TTHK	CONTRACT NO. HY/2019/01	APPROVED BY SC1
DRAWN BY JC	STATUS REV	
SCALE A1 1 : 25000	DRAWING UNIT IN METRES	

© COPYRIGHT RESERVED  
 版權所有

Plot File by : 27/6/2019 17:08:25



**REMARKS:**

- IN SPT1:
  - DEMOLISH 2 NOS. EXISTING GUARD BOOTHS AND RE-PROVISION TO REVISED LOCATIONS AS SHOWN
  - CONSTRUCT COVERED WALKWAYS FOR THE NEW FB AND CBC PICK UP BAYS
  - MODIFY EXISTING DUCTING AND POLES FOR ELV SYSTEM, ROAD LIGHTING AND PILLAR BOXES, AND THE ASSOCIATED CABLING WORKS
  - RELOCATE AND REINSTATE 3 NOS. OF EXISTING BUS OPERATOR OFFICES AND FOOD TRUCK
  - REPLACEMENT OF DRAWPIT COVERS
- IN NPT1:
  - CONSTRUCT COVERED WALKWAYS FOR THE NEW CBC, CBS PICK UP BAYS AND PUBLIC TOILETS
  - PROVIDE AUTOMATIC IRRIGATION SYSTEM AT SLOPES
  - MODIFY EXISTING COVERED WALKWAY AND PROVISION OF LIGHTING
  - REPLACEMENT OF DRAWPIT COVERS
- LANDSCAPING WORKS AREA:
  - CONSTRUCT IRRIGATION SYSTEM WITH 13 NOS. OF NEW WATER POINT AND THE AUTOMATIC IRRIGATION SYSTEM AND PROVIDE MAINTENANCE WORKS
  - LANDSCAPE SOFTWORK, ESTABLISHMENT AND MAINTENANCE WORKS
  - CONSTRUCT RIVER WASHED STONE SWATHE AND MAINTENANCE WORKS
  - PROTECT EXISTING PLANTING AND HARD STRUCTURES
- PASSENGER CLEARANCE BUILDING
  - VERTICAL ACCESS
  - IMPROVEMENT WORKS FOR WATER FEATURE
  - MINOR REMAINING WORKS
  - PROVISION OF NEW CENTRAL AVSS EQUIPMENT WITH SUFFICIENT CAPACITY, PROCESSING POWER AND STORAGE TO ACCOMMODATE BOTH THE EXISTING AND NEW AVSS
- VEHICLE KIOSKS AT INBOUND & OUTBOUND VCP
  - PROVISION OF AVSS AT NEW KIOSKS TO SERVE 24 NOS. VEHICULAR LANES
  - REPLACEMENT OF BARRIER GATE WITH SKIRTING AT 72 NOS. EXISTING KIOSK
- C&E INBOUND CARGO EXAMINATION BUILDING
  - PROVISION OF NEW CENTRAL AVSS EQUIPMENT WITH SUFFICIENT CAPACITY, PROCESSING POWER AND STORAGE TO ACCOMMODATE BOTH THE EXISTING AND NEW AVSS

**ABBREVIATION:**

- SPT1 - SOUTH PUBLIC TRANSPORT INTERCHANGE
- NPT1 - NORTH PUBLIC TRANSPORT INTERCHANGE
- VCP - VEHICLE CLEARANCE PLAZA
- PCB - PASSENGER CLEARANCE BUILDING
- FB - FRANCHISED BUS
- CBC - CROSS BOUNDARY COACH
- CBS - CROSS BOUNDARY SHUTTLE
- ELV - EXTRA LOW VOLTAGE
- AVSS - AUTOMATIC VEHICLE CLEARANCE SUPPORT SYSTEM

**NOTE:**

1. THIS DRAWING IS TO BE READ IN CONJUNCTION WITH DRAWING NOS. 60191048/C9/000/C00/1002

**LEGEND:**

- SITE BOUNDARY
- AMENITY AREA
- FOOTPATH
- COVERED WALKWAY
- SECURITY FENCE
- TREE PLANTING
- IRRIGATION POINT

NO.	DESCRIPTION	DATE
1	TENDER DRAWING	JUL 19

香港公路局 (Highways Department)
   
 主要工程管理處 (Special Duties) (Major Works Project Management Office)
   
 HONG KONG-ZHUIHAI-MACAO BRIDGE
   
 HONG KONG BOUNDARY CROSSING FACILITIES
   
 PHASE 2 AND OTHER WORKS

**GENERAL ARRANGEMENT**

SHEET 1 OF 2

Rogers Stirk Harbour + Partners
   
 BURO HAPPOLD ATKINS ADI

DRGNO 60191048/C9/000/C00/1001

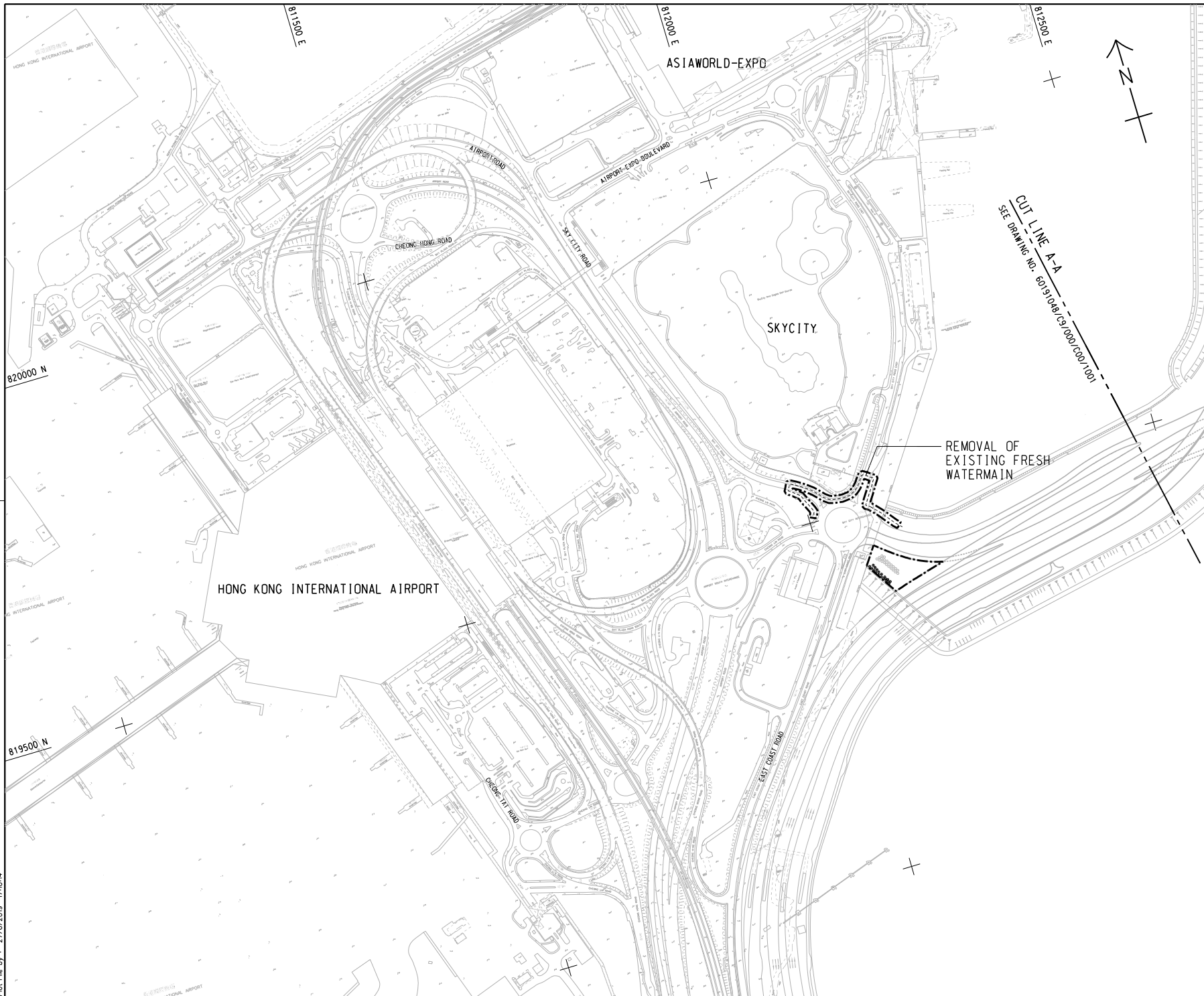
DESIGNED BY	CONTRACT NO.	P. Dir. APPROVED
TJHK	HY/2019/01	SCI
DRAWN BY	STATUS	
JC	REV	

SCALE 1:2500  
DIMENSIONS ARE IN METRES

© COPYRIGHT RESERVED

CUT LINE A-A  
SEE DRAWING NO. 60191048/C9/000/C00/1002

Plot File by : 09/07/2019 B-4657



**NOTE:**  
 1. THIS DRAWING TO BE READ IN CONJUNCTION WITH DRAWING NOS. 60191048/C9/000/C00/1001.

REV. NO.	DESCRIPTION	DATE
1	TENDER DRAWING	JUL 19

香港路政處  
 HIGHWAYS DEPARTMENT  
 主要工程管理處 (傳真專組)  
 Major Works Project Management Office (Special Duties)

HONG KONG-ZHUHAI-MACAO BRIDGE  
 HONG KONG BOUNDARY CROSSING FACILITIES  
 - PHASE 2 AND OTHER WORKS

**GENERAL ARRANGEMENT**  
 SHEET 2 OF 2

Rogers Stirk Harbour + Partners  
 BURO HAPPOLD ATKINS ADI

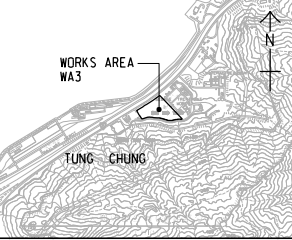
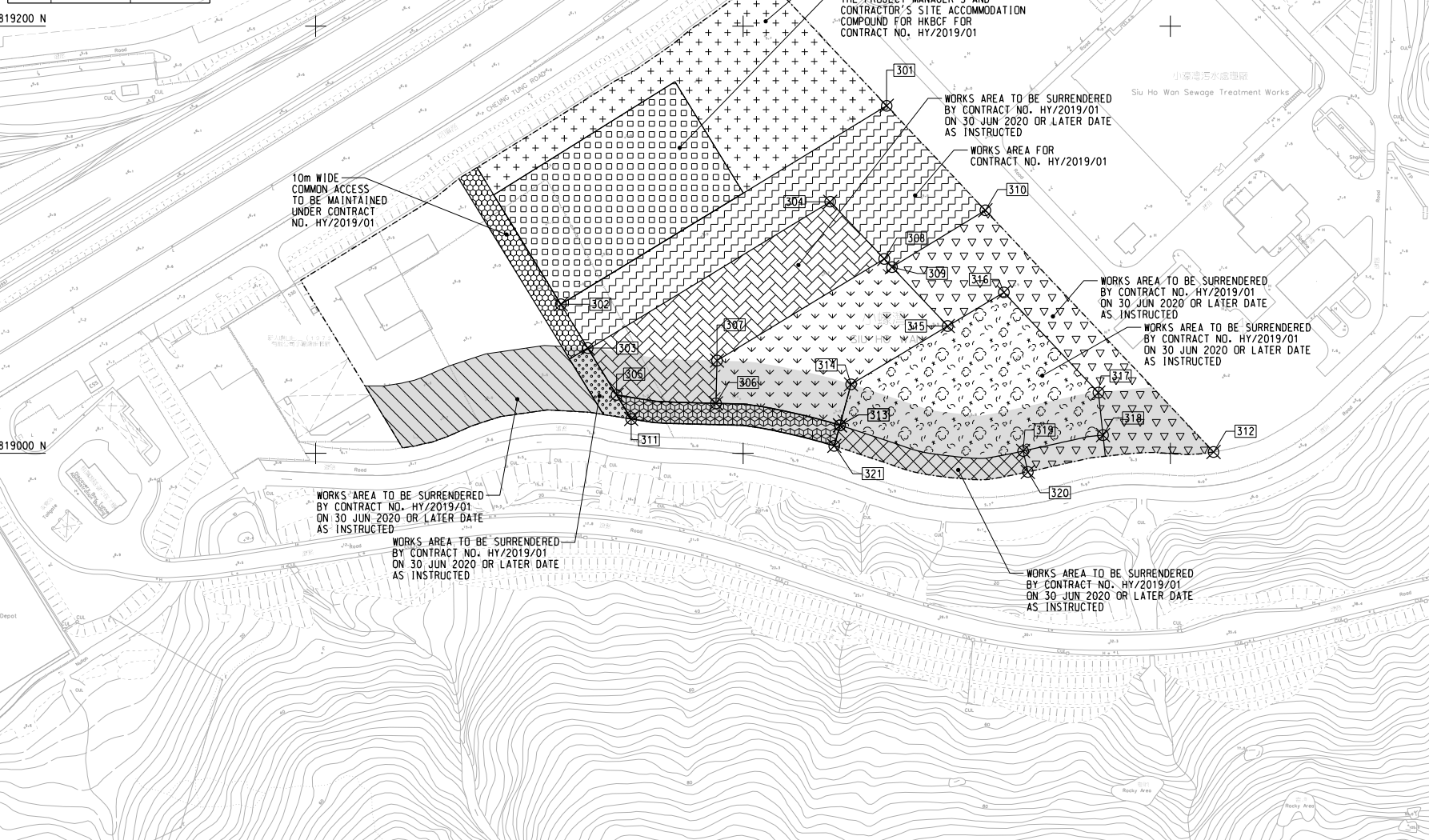
DRG. NO. 60191048/C9/000/C00/1002  
 圖紙編號

DESIGNED BY 設計	CONTRACT NO. 合約編號	P. Dir. APPROVED 核准
TTHK	HY/2019/01	SC1
DRAWN BY 繪圖	STATUS 狀態	
JC		

SCALE  
 比例尺  
 A1 1 : 2500  
 DIMENSIONING UNIT IN METRES  
 尺寸單位為公尺

Plot File by : 27/6/2019 17:03:4

SETTING OUT POINT		
POINT	EASTING	NORTHING
301	817467.265	819162.683
302	817314.741	819069.828
303	817327.338	819049.295
304	817440.865	819117.811
305	817340.825	819027.314
306	817387.350	819023.403
307	817387.861	819043.396
308	817466.133	819091.047
309	817469.783	819087.181
310	817513.449	819113.764
311	817347.717	819016.082
312	817620.269	819000.620
313	817445.362	819013.131
314	817450.595	819032.307
315	817495.828	819059.595
316	817522.110	819075.388
317	817566.404	819028.472
318	817568.506	819008.526
319	817531.155	819001.066
320	817533.346	818991.306
321	817442.727	819003.476



LOCATION PLAN  
SCALE 1 : 25000

NOTES:  
 1. COORDINATES ARE RELATED TO HONG KONG METRIC GRID (1980).  
 2. DIMENSIONS ARE IN MILLIMETER AND CHAINAGE ARE IN METRES UNLESS OTHERWISE SHOWN.

LEGEND:

	WORKS AREA BOUNDARY
	PORTION 3.1
	PORTION 3.2
	PORTION 3.3
	PORTION 3.4
	PORTION 3.5
	PORTION 3.6
	PORTION 3.7
	PORTION 3.8
	PORTION 3.9
	PORTION 3.10
	PORTION 3.11
	PORTION 3.12
	NON-BUILDING AREA 8200m <sup>2</sup> (WHOLE)

REV. NO.	DESCRIPTION	DATE
1	TENDER DRAWING	TTHK 06/2019

HIGHWAYS DEPARTMENT  
 Major Works Project Management Office (Special Duties)

HONG KONG-ZHUHAI-MACAO BRIDGE  
 HONG KONG BOUNDARY CROSSING FACILITIES  
 - PHASE 2 AND OTHER WORKS

WORKS AREA WA3

**AECOM** +  
 Rogers Stirk Harbour + Partners  
**Aedas**  
 BURO HAPPOLD ATKINS ADI +

DRGNO. 60191048/C9/000/C00/1051  
 圖紙編號

DESIGNED BY TTHK	CONTRACT NO. HY/2019/01	P. Dir. APPROVED SCL
---------------------	----------------------------	-------------------------

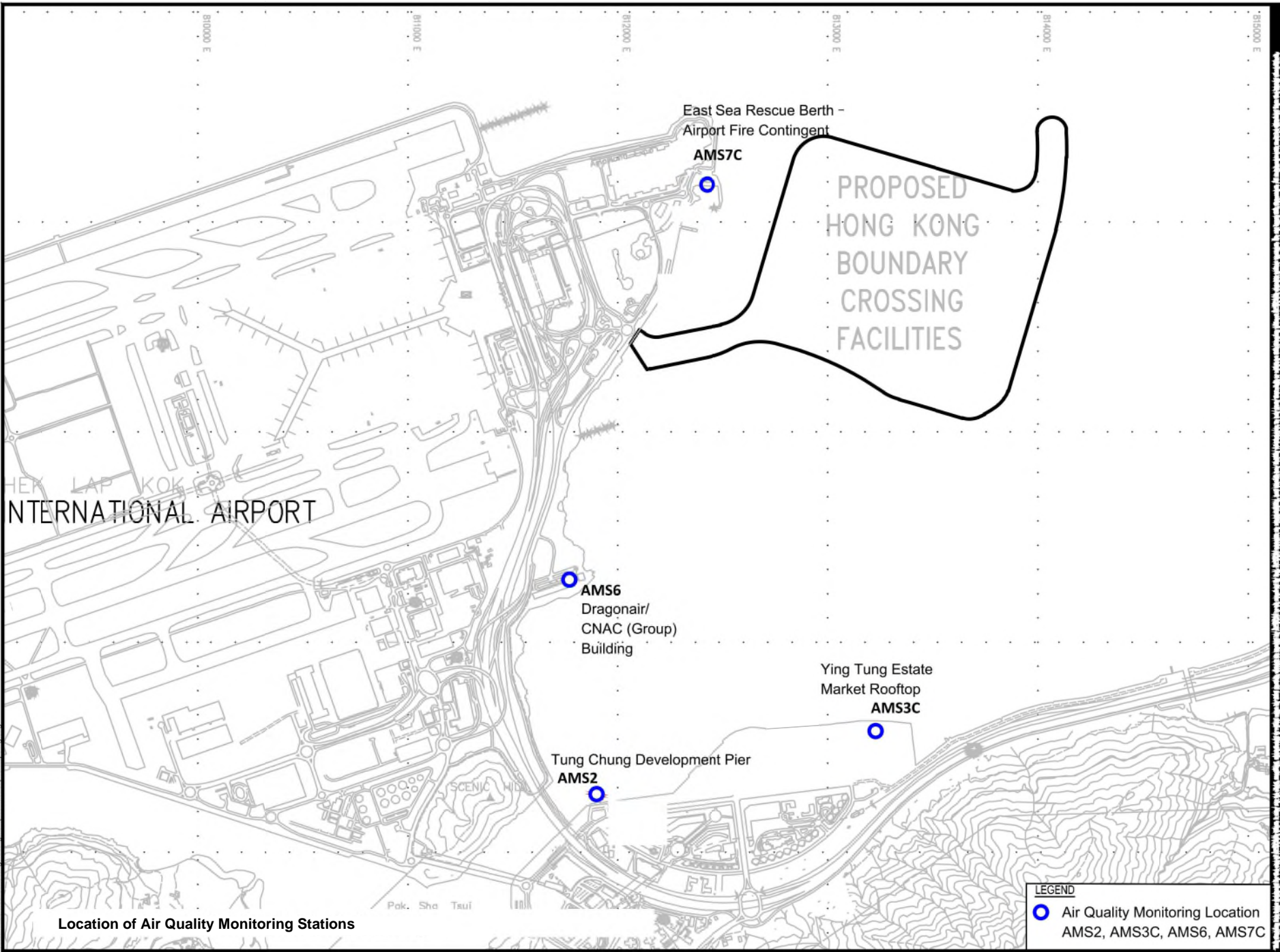
SCALE 1 : 1000  
 圖紙比例尺  
 DIMENSIONS ARE IN METRES  
 圖紙尺寸以米為單位  
 © COPYRIGHT RESERVED  
 版權所有

Plot File by : 2019/06/20 9:34:39

## Figure 2

---

The Location of the Air Quality Monitoring Station



Location of Air Quality Monitoring Stations

**LEGEND**

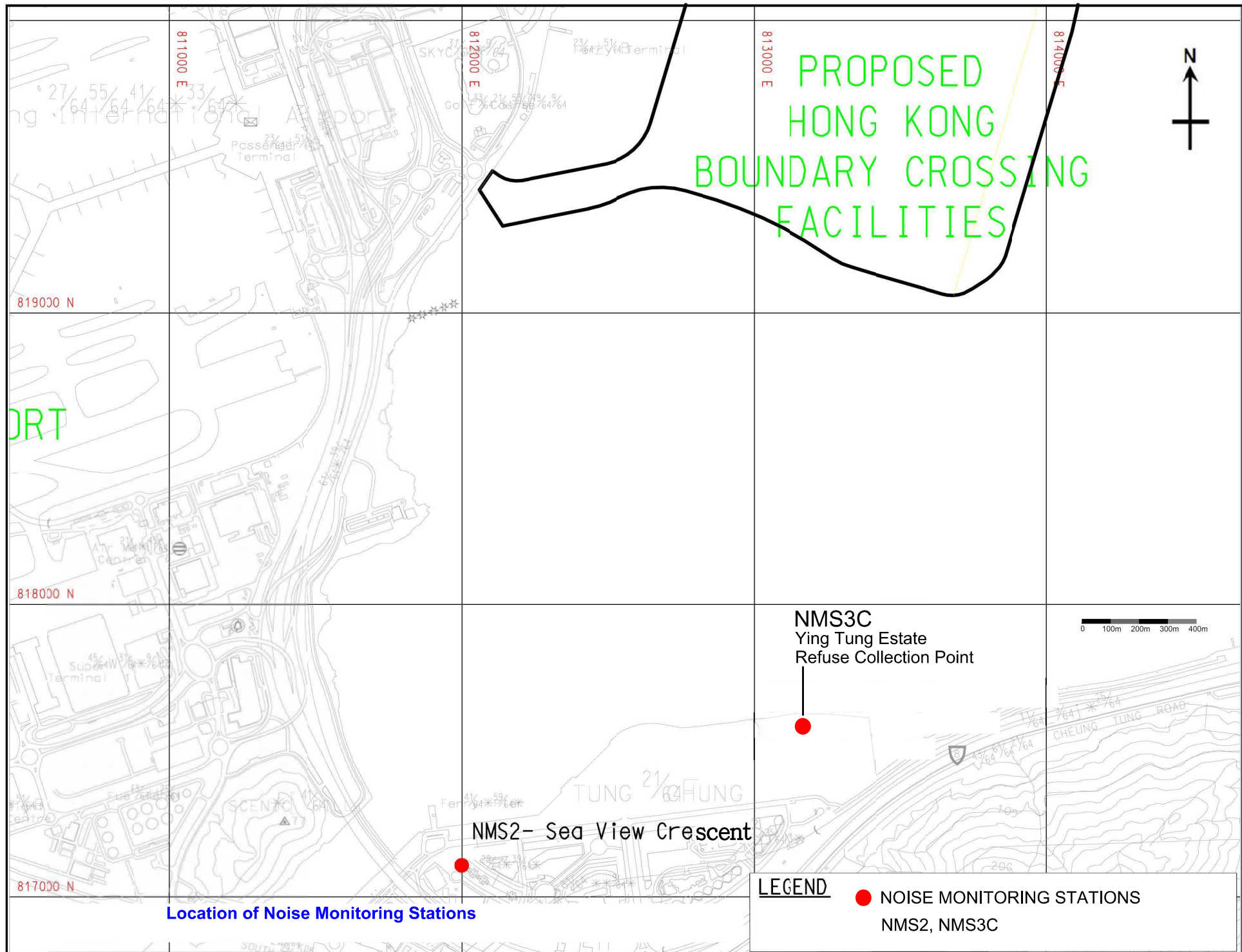
- Air Quality Monitoring Location  
AMS2, AMS3C, AMS6, AMS7C



## Figure 3

---

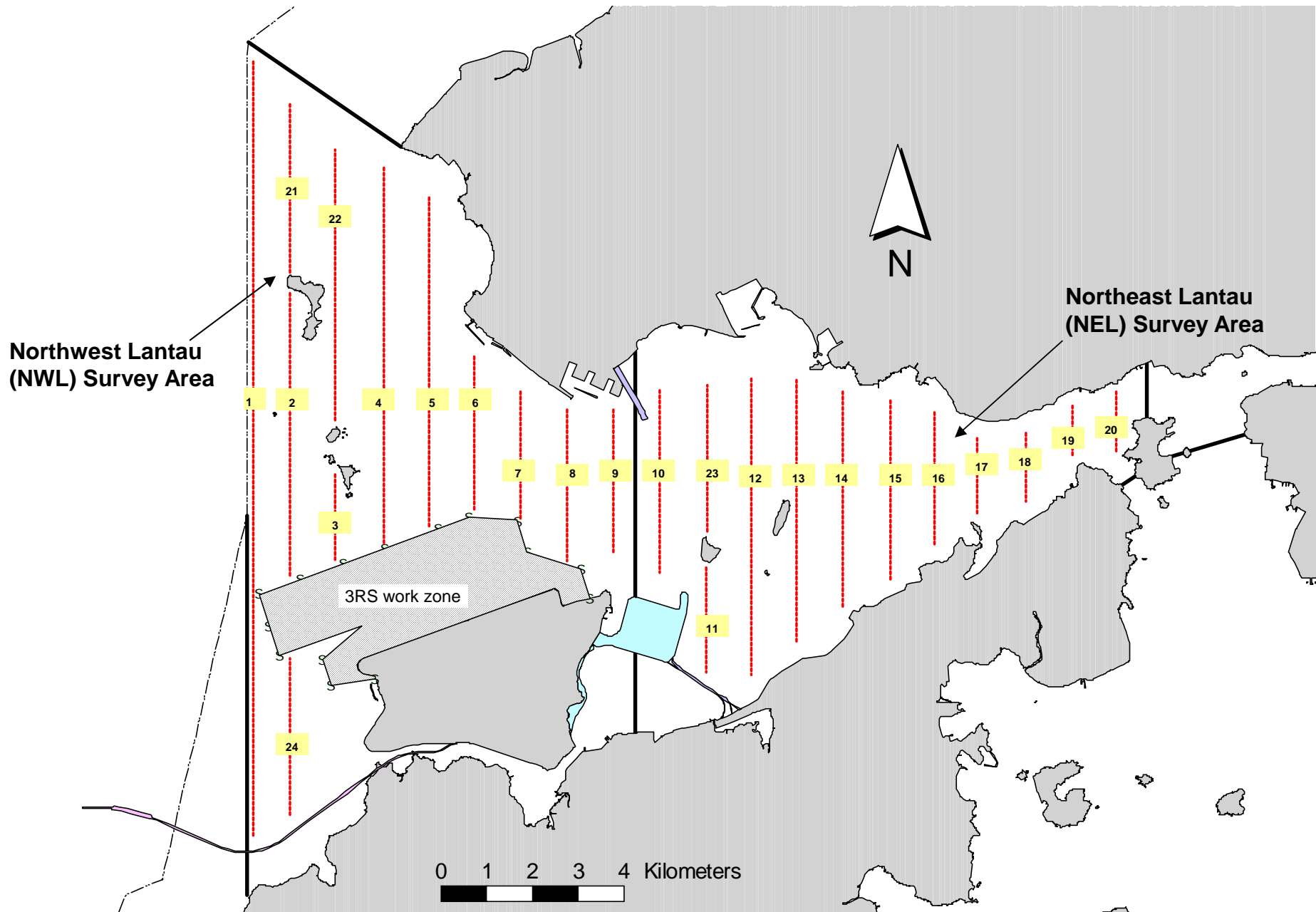
The Location of the Noise Monitoring Station



# Figure 4

---

Post-Construction Dolphin Monitoring Line Transect  
Layout Map



Transect Line Layout in Northwest and Northeast Lantau Survey Areas

# Appendix A

---

Construction Programme

Activity ID	Activity Name	Remaining Duration	Start	Finish	2021				
					Jul	Aug	Sep	Oct	Nov
<b>Revised Works Programme for HKZMB Phase 2 and Other Works (HY/2019/01)</b>									
<b>CONTRACT DATES</b>									
<b>Sectional Completion</b>									
A0260	Section 2: Irrigation System at Slopes of NPTI within Portion B (550 days)	0		30-Sep-21*					
A0280	Section 3: Modification of Walkway, Construction of Bldg003 and Bldg007at NPTI within Portion C (	0		30-Sep-21*					
<b>SUBMISSIONS</b>									
A0470	Submission of Landscape Softworks Method for Acceptance	16	04-Dec-19 A	18-Aug-21					
<b>CONTRACTOR'S DESIGN</b>									
A4920	Acceptance of Design for Raised Access Floor System for Kiosk 027 & 030	0	21-Sep-20 A	03-Jul-21 A					
A4945	Acceptance of Design for Skylight for Kiosks 027 & 030	0	21-Sep-20 A	03-Jul-21 A					
A7950	Acceptance of the Design for Irrigation System (NPTI)	8	01-Aug-20 A	10-Aug-21					
A7980	Acceptance of the Design for Pump House	8	16-Aug-20 A	10-Aug-21					
A8000	Acceptance of the Design for Irrigation System (Southern Portion)	8	16-Aug-20 A	10-Aug-21					
A8020	Acceptance of the Design for Irrigation System (Water Point)	8	01-Sep-20 A	10-Aug-21					
A8040	Acceptance of Design for Window System for Building No. 002 and Kiosks 027 & 030	0	17-Sep-20 A	03-Jul-21 A					
A8100	Acceptance of Design for Signage for Building No. 002 & 003 and Kiosks 027 & 030	0	17-Apr-21 A	31-Jul-21 A					
A8120	Acceptance of Design for Aluminum Cladding for for Building No. 002 & 003 and Kiosks 027 & 030	0	31-Oct-20 A	03-Jul-21 A					
A8140	Acceptance of Design for Blockwall System for Kiosks 027 & 030	0	17-Sep-20 A	03-Jul-21 A					
A8160	Acceptance of Design for External False Ceiling system for Kiosks 027 & 030	0	17-Sep-20 A	03-Jul-21 A					
A8730A	Design for Upgrading Works for DCS	32	04-Dec-19 A	03-Sep-21					
A8740	Acceptance for Design of Sliding Gate	29	03-May-20 A	31-Aug-21					
A8740A	Acceptance for Design for Design for Upgrading Works for DCS	32	03-May-20 A	03-Sep-21					
<b>BUILDING INFORMATION MODELING</b>									
A7570	Combined Services Drawing (Gen by BIM model)	32	01-Apr-20 A	03-Sep-21					
<b>REFINEMENT WORKS AT HKP (4A)</b>									
<b>Installation of Vehicle Barrier Gate at Existing Vehicle Kiosks (4A.B)</b>									
A4345-3	4A.2.1.2.3-Procurement and Delivery of Barrier Gate - Batch 3 (24 nos)	0	01-Dec-20 A	03-Jul-21 A					
A4350-30	User Approval to Replace Gates & Material-On-Site, Batch 3 (28 nos) PD1,21,22,GD1-5, GA3-8,CI	0	03-Jul-21 A	08-Jul-21 A					
A4350-32	Replacement of Gates - Batch 3 (28 nos) PD1,21,22, GD1-5, GA3-8, CD01-4, SK1-4, CA1-4, PA1,22	22	05-Jul-21 A	27-Aug-21					
<b>Installation of Sliding Gate at Building No. 041 (4A.J)</b>									
A4980	Design for Sliding Gate	32	03-Jul-21 A	03-Sep-21					
A6650	Acceptance for Design of Sliding Gate	32	03-Jul-21 A	03-Sep-21					
A6650A	Removal of the existing manual swing gate	36	04-Sep-21	09-Oct-21					
A6660	Procurement of Sliding Gate	68	03-May-21 A	09-Oct-21					
A6710	Installation of Security Fence and Sliding Gate (Fire Station cum Ambulance Depot 041)	25	11-Oct-21	09-Nov-21					
<b>SECTION 2: IRRIGATION SYSTEM AT SLOPES OF NPTI WITHIN PORTION B (3)</b>									
<b>Design and Design Acceptance</b>									
A6890	Acceptance of Submission of Material	0	01-Sep-20 A	03-Jul-21 A					
<b>Irrigation System at Slopes of NPTI within Portion B</b>									
A6900	Irrigaton Pipe Laying	50	05-Jul-21 A	30-Sep-21					
A6920	T&C	12	16-Sep-21	30-Sep-21					
A7330	Section 2: Irrigation System at Slopes of NPTI within Portion B (550 days)	0		30-Sep-21*					
<b>SECTION 3: NPTI - PUBLIC TOILET, COVERED WALKWAY &amp; PAVEMENT (6)</b>									
<b>Additional and Modification to Existing Covered Walkway, Area 1 - 6 (6.E)</b>									
A2580	ELV & E&M works (incl. lighting installation)	0	06-Apr-21 A	06-Jul-21 A					
A2590	Paving Block Pavement at Footpath	0	07-Apr-21 A	06-Jul-21 A					
A6990	T&C	1	07-Jul-21 A	03-Aug-21					
<b>Additional &amp; Modification of Covered Walkway adjacent to Building 003, Area 7 (6.C)</b>									
A4430	Drainage & Ducting at Footpath	22	03-Oct-20 A	27-Aug-21					
A4450	Erection of Covered Walkway	35	28-Nov-20 A	11-Sep-21					
A4455	Installation of aluminium honey comb panels to the existing covered walkways	11	17-Dec-20 A	14-Aug-21					
A4460	ELV & E&M works	5	01-Apr-21 A	07-Aug-21					
A4470	Paving Block Pavement at Footpath	25	01-Apr-21 A	31-Aug-21					
A4470E	Electrical Work inside EL Pillar Box	17	26-Apr-21 A	21-Aug-21					
A4470G	Canopy Lighting Installation	41	15-Apr-21 A	18-Sep-21					
A7010	T&C	39	16-Aug-21	30-Sep-21					
<b>Public Toilet Type 1, Building 003 (6.B)</b>									
A1710	Acceptance of Design for Toilet Partitions	0	30-Jun-21 A	28-Jul-21 A					
A2140	Floor Screeding, Public Toilet Bld003	1	20-May-21 A	03-Aug-21					

■ Actual Work    ◆ ◆ Milestone  
■ Remaining Work  
■ Critical

**THREE MONTH ROLLING PROGRAMME FOR PHASE 2 AND OTHER WORKS  
HKZMB - HONG KONG BOUNDARY CROSSING FACILITIES**

Date	Revision	Checked	Appro...
12-Aug-21	3mth Rolling Programme, Aug. - Dec. 2021	ZJ	

**HKZMB HK Boundary Crossing Facilities - Phase 2 and Other Works**

**12-Aug-21**

Activity ID	Activity Name	Remaining Duration	Start	Finish	2021				
					Jul	Aug	Sep	Oct	Nov
A2150	Water Proofing Works	1	16-Jun-21 A	03-Aug-21					
A2170	Block Wall and Finishing (with Furring Walls)	5	27-Jun-21 A	07-Aug-21					
A2180	External Finishing (Metal Cladding)	25	03-May-21 A	31-Aug-21					
A2190	Doors (7 Nos. of Metal Doors)	23	03-Jun-21 A	28-Aug-21					
A2210	Metal Works (1 No. of Cat Ladder, 1 No. of Louvre, 1 No. of Ap)	0	18-Jun-21 A	15-Jul-21 A					
A2220	Roof Metal Railing	17	18-Jun-21 A	21-Aug-21					
A2230	Roof Skylight System	17	03-Aug-21	21-Aug-21					
A2240	Roof Cladding	25	03-Aug-21	31-Aug-21					
A2250	Sanitary Fitting Installation	5	04-Aug-21	09-Aug-21					
A2270	Delivery of Furniture	0	22-Jun-20 A	31-Jul-21 A					
A2280	Furniture Installation	9	02-Aug-21 A	12-Aug-21					
A2290	Toilet Cubicle Installation	14	02-Aug-21 A	18-Aug-21					
A2310	Ceiling Installation	11	02-Aug-21 A	14-Aug-21					
A3379	WVO542 & WVO46 Part 1-4 Submission	0	14-Jun-21 A	20-Jul-21 A					
A3380A	Concealed conduit work	0	03-Mar-21 A	30-Jul-21 A					
A3380A1	Cabling works	0	03-Jun-21 A	30-Jul-21 A					
A3380B	BS Installation (above ceiling area)	4	24-May-21 A	06-Aug-21					
A3380C	BS (incl. signage) Installation (area except ceiling area)	37	26-May-21 A	14-Sep-21					
A3380D	SCADA and panic alarm (ELV) installation works	17	26-May-21 A	21-Aug-21					
A3380E	Cable ducting installation (from PU-PB-01 to building 003)	1	28-Apr-21 A	03-Aug-21					
A3380F	Power cable laying and submission of WR1A	1	03-Jun-21 A	03-Aug-21					
A3380G	FSD Inspection and approval	28	10-Aug-21	10-Sep-21					
A3390	TPIDC Authority Inspection & Approval	22	30-Aug-21	24-Sep-21					
A6100	ASD Approval, WVO Part V submission & Approval	22	30-Aug-21	24-Sep-21					
<b>Additional Railing adjacent to Building 003 (6.D)</b>									
A3410	Installation of Railing	25	03-Jul-21 A	31-Aug-21					
<b>Drainage, Pavement, Kerbing, Lighting, Marking and Signs (6.F)</b>									
A1620	Drainage & Sewerage	22	03-Nov-20 A	27-Aug-21					
A1620A	Fresh Water Main Laying	23	03-Nov-20 A	28-Aug-21					
A1620B	Flush Water Main Laying	23	03-Nov-20 A	28-Aug-21					
A1630	Ducting Works	17	03-May-21 A	21-Aug-21					
A1640	Pavement, Kerbing, Marking and Signs	46	18-Jun-21 A	25-Sep-21					
<b>Completion of Section 3</b>									
A7360	Section 3: Modification of Walkway, Construction of Bldg003 and Bldg007at NPTI within Portion C (:	0		30-Sep-21					
<b>SECTION 4: REMOVAL OF WATERMAIN AT THE SKYCITY INTERCHANGE WITHIN PORTION C AND D</b>									
A3610	Submission of TTA	0	04-Dec-19 A	24-Jul-21 A					
A3650	Acceptance of TTA	0	06-Dec-20 A	24-Jul-21 A					
A4040	Preparation Works for Implementation of TTA (Release TTA by AA Contractor on 1.8.2020)	0	03-Jun-21 A	01-Aug-21 A					
A4050	Liaise with AAHK (does not include access to AA Contractor site) for Site Access	30	29-Jul-20 A	01-Sep-21					
A7380	Removal of Watermain at Skycity Interchange, Portion 1	63	04-Sep-21	19-Nov-21					
A7400	Removal of Watermain at Skycity Interchange, Portion 2	28	30-Jul-21 A	03-Sep-21					
A7440	Removal of Watermain at Skycity Interchange, Portion 4	0	23-Jun-21 A	29-Jul-21 A					
<b>SECTION 5: REMAINING WORKS</b>									
<b>External Works at Plaza</b>									
A1520	Additional Drainage Works	0	03-Jun-20 A	03-Aug-21					
A1530B	Pavement Works (Subbase) at Outbound North	23	08-Apr-21 A	28-Aug-21					
A1540	Pavement Works (Subbase) at Inbound South	41	02-Jul-21 A	18-Sep-21					
A1540A	Pavement Works (Roadbase and Base Course) at Outbound South	25	19-Feb-21 A	31-Aug-21					
A1540B	Pavement Works (Roadbase and Base Course) at Outbound North	35	10-May-21 A	11-Sep-21					
A1540C	Pavement Works (Roadbase and Base Course) at Inbound South	46	08-Jun-21 A	25-Sep-21					
A1550	Pavement Works (Roadbase and Base Course) at Inbound North	17	12-Apr-21 A	21-Aug-21					
A8750	Pavement Works (incl. waterproof+screeding layer) at kiosks area at outbound	74	15-May-21 A	30-Oct-21					
A8770	Pavement Works (Wearing Course) at Outbound	41	11-Oct-21*	27-Nov-21					
A8780	Pavement Works (Wearing Course) at Inbound	42	01-Nov-21*	18-Dec-21					
<b>Inbound: 11 No. of Private Car Kiosks between 027/028</b>									
<b>Builder Works (5.A)</b>									
A1070	Installation of Windows/Door at Kiosks	49	13-Apr-21 A	29-Sep-21					
A1080	ABWF Works at 1st Group Kiosks (3 nos.)	29	13-May-21 A	04-Sep-21					
A1080A	ABWF Works at 2nd Group Kiosks (3 nos.)	38	08-Jun-21 A	15-Sep-21					
A1080B	ABWF Works at 3rd Group Kiosks (3 nos.)	47	07-Jul-21 A	27-Sep-21					
A1080C	ABWF Works at 4th Group Kiosks (2 nos.)	57	27-Jul-21 A	09-Oct-21					

Actual Work    ◆ ◆ Milestone  
 Remaining Work  
 Critical

**THREE MONTH ROLLING PROGRAMME FOR PHASE 2 AND OTHER WORKS**  
**HKZMB - HONG KONG BOUNDARY CROSSING FACILITIES**

Date	Revision	Checked	Appro...
12-Aug-21	3mth Rolling Programme, Aug. - Dec. 2021	ZJ	

**HKZMB HK Boundary Crossing Facilities - Phase 2 and Other Works**

12-Aug-21

Activity ID	Activity Name	Remaining Duration	Start	Finish	2021				
					Jul	Aug	Sep	Oct	Nov
A1080D	ABWF Works at Kiosks at Inbound VCP (miscellaneous external railing, cladding etc.)	100	17-Aug-21	14-Dec-21					
A1170	Fabrication and delivery of Metal Roof Panel Components	11	03-Dec-20 A	14-Aug-21					
A1170A	Erection of Secondary Beams & Sub-frames	0	29-May-21 A	22-Jul-21 A					
A1170B	Erection of ODB Mounting Frames	17	08-Jul-21 A	21-Aug-21					
A1170C	Erection of Panel for ODB (bottom layer) (G25 - G35)	43	16-Aug-21*	06-Oct-21					
A1180	Erection of Roof Panels (top layer) G25 - G35	40	27-Sep-21*	13-Nov-21					
A4480	Removal of all hoarding for OPT	11	01-Nov-21*	12-Nov-21					
<b>E&amp;M Works</b>									
A1108C	4th Group Kiosks (2nos.): Concealed conduit & BS Installation	0	11-Jun-21 A	06-Jul-21 A					
A1109	E&M Installation Work for CUE Area	62	20-Jan-21 A	16-Oct-21					
A1120-13	8.1.2.0-Install Cable and Fibres for AVCSS (027/028)	0	06-Mar-21 A	03-Jul-21 A					
A1120-15	8.1.2.0-FAT AVCSS	18	03-Oct-20 A	23-Aug-21					
A1120-20	8.1.2.1-Delivery of Major Equipment (Servers, Workstations, Core Switches, Access Switches)	0	03-May-21 A	30-Jul-21 A					
A1120-30	8.1.2.1A-Delivery of Remaining AVCSS Equipment	0	03-May-21 A	30-Jul-21 A					
A1120-44	8.1.2.2- 1st Installation of Equipment (027/028)	6	06-Sep-21	11-Sep-21					
A1120-44A	8.1.2.2- 2nd Installation of Equipment (027/028)	6	16-Sep-21	23-Sep-21					
A1120-44B	8.1.2.2- 3rd Installation of Equipment (027/028)	6	28-Sep-21	05-Oct-21					
A1120-44C	8.1.2.2- 4th Installation of Equipment (027/028)	6	11-Oct-21	18-Oct-21					
A1120-46	8.1.2.2-Pre-inspection of ODB	18	23-Aug-21	11-Sep-21					
A1120-46.1	8.1.2.2-Installation of ODB (027/028) - after A1170B Erection of Roof	32	07-Oct-21	13-Nov-21					
A1120-54	8.1.2A-Relocation of Inbound VID and VTS Equipment	13	07-Jun-21 A	17-Aug-21					
A1120-60	8.1.3 - System Configuration of AVCSS	56	13-Sep-21	19-Nov-21					
A1130-25	Proposal for Migration/Integration with existing AVCSS Before OPT subject to Users (C&ED)	71	28-Jul-21 A	27-Oct-21					
A1190	E&M Works at Roof	50	24-Jul-21 A	30-Sep-21					
A8360A	Design for Upgrading Works for DCS	32	04-Dec-19 A	03-Sep-21					
A8360B	Acceptance for Design for Design for Upgrading Works for DCS	32	03-May-20 A	03-Sep-21					
A8360C	Material Delivery for DCS upgrading	46	04-Sep-21	30-Oct-21					
A8370	Update and modification of District Cooling System (DCS) (incl. water balancing and calibration wo	50	01-Nov-21	30-Dec-21					
<b>Outbound: 11 No. of Private Car Kiosks between 029/030</b>									
<b>Builder's Works (5.A)</b>									
A1260	Installation of Windows/Door at Kiosks	41	08-Feb-21 A	18-Sep-21					
A1270	ABWF Works at 1st Group Kiosks (2 nos.)	23	11-Feb-21 A	28-Aug-21					
A1270A	ABWF Works at 2nd Group Kiosks (3 nos.)	32	15-Mar-21 A	08-Sep-21					
A1270B	ABWF Works at 3rd Group Kiosks (3 nos.)	42	12-Apr-21 A	20-Sep-21					
A1270C	ABWF Works at 4th Group Kiosks (3 nos.)	50	26-Apr-21 A	30-Sep-21					
A1360	Fabrication and delivery of Metal Roof Panel Components	0	28-Nov-20 A	30-Jul-21 A					
A1370B	Erection of ODB Mounting Frames	11	25-Jun-21 A	14-Aug-21					
A1370C	Erection of Panel for ODB (bottom layer) (GL11 - 22)	46	25-Jun-21 A	25-Sep-21					
A1380	Erection of Roof Panels (top layer) (GL12 - 22)	39	15-Sep-21*	02-Nov-21					
A1380A	MJ, Fall Arrest System, Maintenance Access	44	27-Oct-21	16-Dec-21					
<b>E&amp;M Works</b>									
A1310-13	8.1.2.0-Install Cable and Fibres for AVCSS (029/030)	0	03-Jun-21 A	26-Jul-21 A					
A1310-15	8.1.2.0-FAT AVCSS	25	03-Oct-20 A	31-Aug-21					
A1310-44	8.1.2.2-1st Installation of Equipment (029/030)	35	03-Jul-21 A	11-Sep-21					
A1310-44A	8.1.2.2-2nd Installation of Equipment (029/030)	12	13-Sep-21	27-Sep-21					
A1310-44B	8.1.2.2-3rd Installation of Equipment (029/030)	12	28-Sep-21	12-Oct-21					
A1310-44C	8.1.2.2-4th Installation of Equipment (029/030)	12	02-Oct-21	16-Oct-21					
A1310-46	8.1.2.2-Pre-inspection of ODB	17	16-Aug-21	03-Sep-21					
A1310-46.1	8.1.2.2-Installation of ODB (029/030) - after A1370C: Erection of Panel for ODB (bottom layer) (GL1	35	27-Sep-21	08-Nov-21					
A1310-54	8.1.2A-Relocation of Outbound VID and VTS Equipment	0	03-May-21 A	14-Jul-21 A					
A1310-60	8.1.3 - System Configuration of AVCSS	56	13-Sep-21	19-Nov-21					
A1320-25	Proposal for Migration/Integration with existing AVCSS before OPT subject to Users (C&ED)	71	28-Jul-21 A	27-Oct-21					
A1390	E&M Works at Roof	50	03-Aug-21	30-Sep-21					
A8360D	Design for Upgrading Works for DCS	32	04-Dec-19 A	03-Sep-21					
A8360E	Acceptance for Design for Design for Upgrading Works for DCS	32	03-May-20 A	03-Sep-21					
A8360F	Material Delivery for DCS upgrading	30	04-Sep-21	11-Oct-21					
A8380	Update and modification of District Cooling System (DCS) (incl. water balancing and calibration wo	50	12-Oct-21	09-Dec-21					
<b>Drainage &amp; Pavement Works at Kiosks (Inbound &amp; Outbound)</b>									
A1370	Drainage at Kiosks Area	1	16-May-20 A	03-Aug-21					
A1370-A	Reinstatement of waterproofing & conc. screeding on CUE top	1	03-Jun-21 A	03-Aug-21					
A1370-B	Profile barriers w/conc. infill	14	03-Jun-21 A	18-Aug-21					

█ Actual Work    ◆ Milestone  
█ Remaining Work  
█ Critical

**THREE MONTH ROLLING PROGRAMME FOR PHASE 2 AND OTHER WORKS  
HKZMB - HONG KONG BOUNDARY CROSSING FACILITIES**

Date	Revision	Checked	Appro...
12-Aug-21	3mth Rolling Programme, Aug. - Dec. 2021	ZJ	



**HKZMB HK Boundary Crossing Facilities - Phase 2 and Other Works**

**12-Aug-21**

Activity ID	Activity Name	Remaining Duration	Start	Finish	2021				
					Jul	Aug	Sep	Oct	Nov
A1370-C	Paving works at kiosks area	62	21-Jun-21 A	16-Oct-21					
A1370-D	Testing for glazing of skylight	11	19-Jul-21 A	14-Aug-21					
A1370-E	Installation of skylight system (supporting frame & glazing panels)	50	02-Jul-21 A	30-Sep-21					
<b>Observation Guard Booths, Building 002</b>									
A2010	Raised Floor	1	11-May-21 A	03-Aug-21					
A3060	Furniture Installation	6	19-Jun-21 A	09-Aug-21					
A3080	Finishing works & ceiling installation	1	26-May-21 A	03-Aug-21					
A3090	Internal Finishing	14	29-May-21 A	19-Aug-21					
A3110	E&M installation (including T&C)	0	03-Jun-21 A	03-Aug-21					
A3110A	Installation of ELV equipment (including T&C)	0	15-Jun-21 A	19-Jul-21 A					
A3110F	Submission of FSI 501	0	03-Jul-21 A		◆ Submission of FSI 501				
A3110G	FSD Inspection	0	16-Aug-21		◆ FSD Inspection				
<b>SPTI Stage 3A1</b>									
A2840	Dismantle of Existing Covered Walkway	0	16-Jun-21 A	16-Jul-21 A					
A2850	Dismantle of Existing CPIS Facility	0	16-Jun-21 A	16-Jul-21 A					
A8530	Drainage Construction	0	16-Jun-21 A	16-Jul-21 A					
A8540A	Installation of Covered Walkway Canopy	25	17-Jul-21 A	31-Aug-21					
A8550	Underground Ducting, Drawpits and Foundations	0	16-Jun-21 A	09-Jul-21 A					
A8560	Rigid Pavement Type A and Kerb (incl. roundabout and SOL353)	0	18-Jun-21 A	30-Jul-21 A					
A8580	Dismantle of Existing Guard Booths	28	16-Aug-21	16-Sep-21					
A8590	Flexible Pavement Type C	5	19-Jun-21 A	07-Aug-21					
<b>SPTI Stage 3B</b>									
A8630	Covered Walkway Footing	45	16-Aug-21	08-Oct-21					
A8640	Installation of Covered Walkway Canopy	75	16-Aug-21	13-Nov-21					
A8650	Underground Ducting, Drawpits and Foundations	45	16-Aug-21	08-Oct-21					
A8660	Rigid Pavement Type A	100	17-Aug-21	14-Dec-21					
A8670	Kerb & Planter Barrier	100	18-Aug-21	15-Dec-21					
A8690	Flexible Pavement Type C (incl. SOL353)	92	27-Aug-21	15-Dec-21					
A8710	Footpath Paving Block	90	30-Aug-21	15-Dec-21					
A8720	Canopy Lighting and E&M Works	50	19-Oct-21	15-Dec-21					
<b>Pump House for Landscape (2)</b>									
A2910	Acceptance of the Design for Pump House	0	16-Aug-20 A	03-Aug-21					
A2920	Acceptance for Submission of Materials	0	03-Mar-21 A	03-Jul-21 A					
A2930	Purchasing & Delivery of Water Pump & Associated Equipment	0	03-Mar-21 A	03-Jul-21 A					
A2962	External Works	23	30-Apr-21 A	28-Aug-21					
A2970	Installation of Pumps & Associated Equipment	24	03-May-21 A	30-Aug-21					
A2972	Construction of Pillar Box and Builder's Works for Pump House	25	03-Jun-21 A	31-Aug-21					
A2974	CLP Cabling Works and Power On	49	01-Sep-21	30-Oct-21					
A2990	Final Connection and T&C	14	01-Nov-21	16-Nov-21					
A6440	WSD Inspection & Approval, Final Connection	16	01-Nov-21	16-Nov-21					
<b>Substation Paving Unit</b>									
A7800	Substation: Site formation for Pavement Works	24	02-Oct-21*	30-Oct-21					
A7810	Substation: Pavement Works (KP1 & K1 ) (Paving Unit)	26	01-Nov-21	30-Nov-21					
<b>Landscape Works (2)</b>									
A4160	Mix & place Soilmix (Southern Portion & Closed Area, exclude Hydroseeding Area)	74	26-Aug-20 A	30-Oct-21					
A4180A	Mix and Place Soilmix for Hydroseeding Area	74	28-Dec-20 A	30-Oct-21					
<b>Irrigation System (Southern Portion)</b>									
<i>Design and Design Acceptance</i>									
A7860	Acceptance of the Design for Irrigation System (Southern Portion)	0	16-Aug-20 A	03-Aug-21					
A7870	Liaison with WSD & Water Meter Installation	58	16-Aug-20 A	29-Sep-21					
<i>Irrigation System at Southern Portion</i>									
A7910	Irrigation Pipe Laying (incl. install sprinklers and QCV)	74	02-Jan-21 A	30-Oct-21					
A7930	T&C	26	01-Nov-21	30-Nov-21					
<b>Irrigation System (Water Point)</b>									
A6520	Acceptance of the Design for Irrigation System	0	01-Sep-20 A	03-Jul-21 A					
A6530	Liaison with WSD for Obtaining Statutory Approval	17	01-Aug-20 A	19-Aug-21					
A6550	Irrigation Pipe Installation and Water Meter Installation (incl. TTA & crossing road pipe)	50	17-May-21 A	30-Sep-21					
A7160	T&C	50	02-Oct-21	30-Nov-21					
<b>Group 1: WP 12, 13, 14 &amp; 18</b>									
A6561	Construction of Additional Waterpoints (WP 12) for Irrigation	11	17-May-21 A	14-Aug-21					
A6562	Construction of Additional Waterpoints (WP 13) for Irrigation	11	17-May-21 A	14-Aug-21					

Actual Work    ◆ Milestone  
 Remaining Work  
 Critical

**THREE MONTH ROLLING PROGRAMME FOR PHASE 2 AND OTHER WORKS**  
**HKZMB - HONG KONG BOUNDARY CROSSING FACILITIES**

Date	Revision	Checked	Appro...
12-Aug-21	3mth Rolling Programme, Aug. - Dec. 2021	ZJ	

**HKZMB HK Boundary Crossing Facilities - Phase 2 and Other Works**

**12-Aug-21**

Activity ID	Activity Name	Remaining Duration	Start	Finish	2021					
					Jul	Aug	Sep	Oct	Nov	
A6563	Construction of Additional Waterpoints (WP 14) for Irrigation	27	03-Aug-21*	02-Sep-21						
A6567	Construction of Additional Waterpoints (WP 18) for Irrigation	27	03-Aug-21	02-Sep-21						
<b>Group 2: WP 19 - 22</b>										
A6568	Construction of Additional Waterpoints (WP 19) for Irrigation	47	03-Sep-21	30-Oct-21						
A6569	Construction of Additional Waterpoints (WP 20) for Irrigation	63	03-Aug-21*	18-Oct-21						
A6571	Construction of Additional Waterpoints (WP 21) for Irrigation	63	03-Aug-21	18-Oct-21						
A6572	Construction of Additional Waterpoints (WP 22) for Irrigation	63	03-Aug-21	18-Oct-21						
<b>Group 3: Water Point NPT1</b>										
A6905	Construction of Additional Water Point (WP15) for Irrigation and Water Meter Installation	50	17-May-21 A	30-Sep-21						
<b>Group 4: WP 8, &amp; WP 23</b>										
A6573	Construction of Additional Waterpoints (WP 23) for Irrigation	74	03-Aug-21	30-Oct-21						

- Actual Work    ◆    ◆ Milestone
- Remaining Work
- Critical

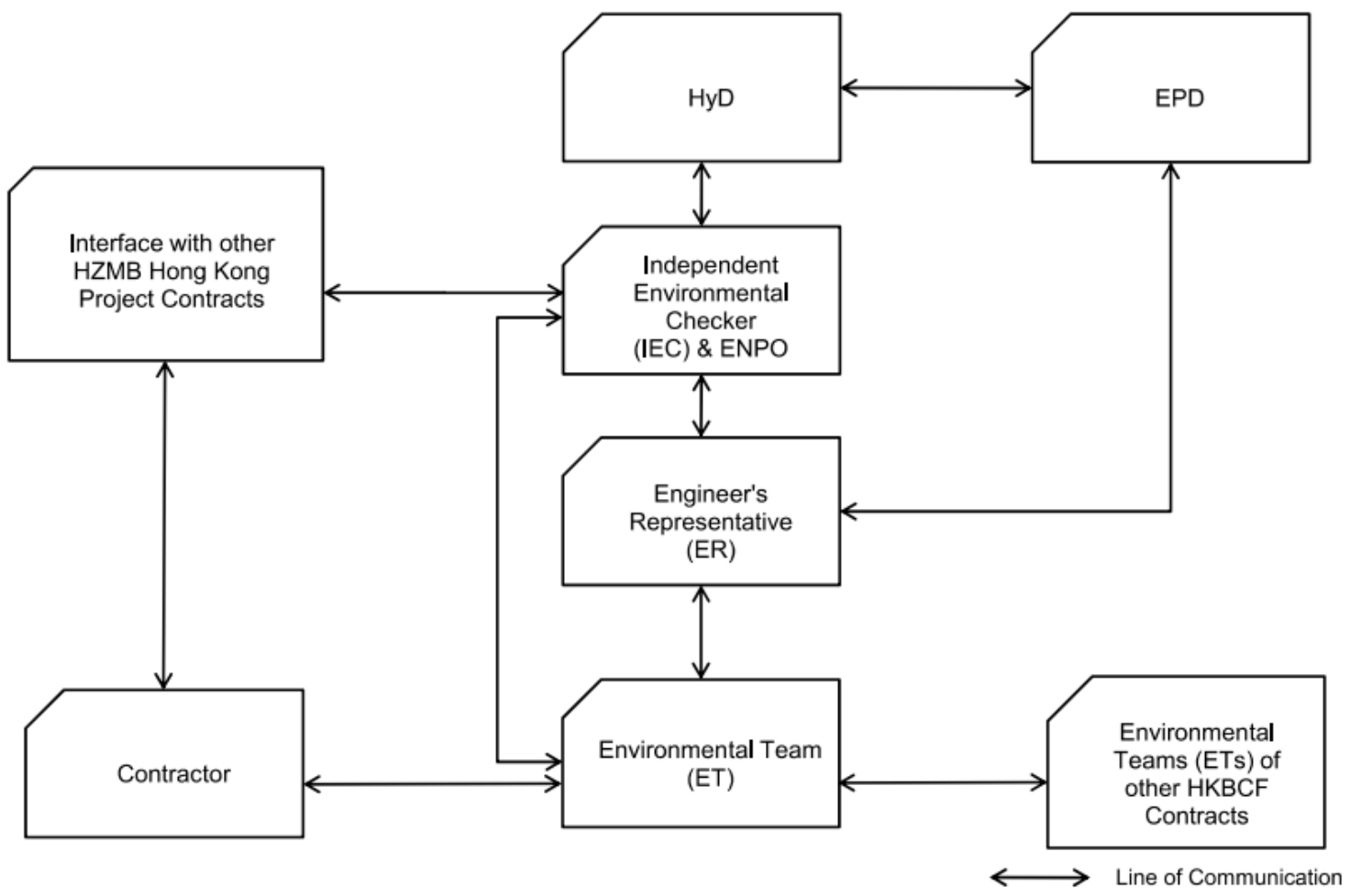
**THREE MONTH ROLLING PROGRAMME FOR PHASE 2 AND OTHER WORKS  
HKZMB - HONG KONG BOUNDARY CROSSING FACILITIES**

Date	Revision	Checked	Appro...
12-Aug-21	3mth Rolling Programme, Aug. - Dec. 2021	ZJ	

# Appendix B

---

Project Organization Chart



# Appendix C

---

Action and Limit Levels

## Action / Limit Levels for Air Quality

Parameters	Action Level	Limit Level
24-hour TSP Level in $\mu\text{g}/\text{m}^3$	<sup>1</sup> For baseline level $\leq 200 \mu\text{g}/\text{m}^3$ , Action level = $(\text{baseline level} * 1.3 + \text{Limit level})/2$ ; For baseline level $> 200 \mu\text{g}/\text{m}^3$ Action level = Limit level	260 $\mu\text{g}/\text{m}^3$
1-hour TSP Level in $\mu\text{g}/\text{m}^3$	<sup>2</sup> For baseline level $\leq 384 \mu\text{g}/\text{m}^3$ , Action level = $(\text{baseline level} * 1.3 + \text{Limit level})/2$ ; For baseline level $> 384 \mu\text{g}/\text{m}^3$ , Action level = Limit level	500 $\mu\text{g}/\text{m}^3$

### Notes:

#### 1. The Action Level for 24-hour TSP Level:

a) AMS 2 =  $(71.1 * 1.3 + 260) / 2 = 176 \mu\text{g}/\text{m}^3$ ; b) AMS 3C =  $(56.9 * 1.3 + 260) / 2 = 167 \mu\text{g}/\text{m}^3$ ;  
 c) AMS 6 =  $(66.4 * 1.3 + 260) / 2 = 173 \mu\text{g}/\text{m}^3$ ; d) AMS 7B =  $(82.3 * 1.3 + 260) / 2 = 183 \mu\text{g}/\text{m}^3$ ;

#### 2. The Action Level for 1-hour TSP Level:

a) AMS 2 =  $(191.5 * 1.3 + 500) / 2 = 374 \mu\text{g}/\text{m}^3$ ; b) AMS 3C =  $(18.2 * 1.3 + 500) / 2 = 368 \mu\text{g}/\text{m}^3$ ;  
 c) AMS 6 =  $(169.2 * 1.3 + 500) / 2 = 360 \mu\text{g}/\text{m}^3$ ; d) AMS 7B =  $(184.2 * 1.3 + 500) / 2 = 370 \mu\text{g}/\text{m}^3$ ;

## Action and Limit Levels for Construction Noise

Time Period	Action Level	Limit Level
0700 - 1900 hours on normal weekdays	When one documented complaint is received	75 dB(A) *

Note : If works are to be carried out during restricted hours, the conditions stipulated in the construction noise permit issued by the Noise Control Authority have to be followed.

\* Reduce to 70 dB(A) for schools and 65 dB(A) during school examination periods.

# Appendix D

---

Event and Action Plan

## Event / Action Plan for Air Quality

EVENT	ACTION			
	ET	IEC	ER	CONTRACTOR
	ACTION LEVEL			
1. Exceedance for one sample	<ol style="list-style-type: none"> <li>1. Identify source, investigate the causes of exceedance and propose remedial measures;</li> <li>2. Inform IEC and ER;</li> <li>3. Repeat measurement to confirm finding;</li> <li>4. Increase monitoring frequency to daily.</li> </ol>	<ol style="list-style-type: none"> <li>1. Check monitoring data submitted by ET;</li> <li>2. Check Contractor's working method.</li> </ol>	<ol style="list-style-type: none"> <li>1. Notify Contractor.</li> </ol>	<ol style="list-style-type: none"> <li>1. Rectify any unacceptable practice;</li> <li>2. Amend working methods if appropriate.</li> </ol>
2. Exceedance for two or more consecutive samples	<ol style="list-style-type: none"> <li>1. Identify source;</li> <li>2. Inform IEC and ER;</li> <li>3. Advise the ER on the effectiveness of the proposed remedial measures;</li> <li>4. Repeat measurements to confirm findings;</li> <li>5. Increase monitoring frequency to daily;</li> <li>6. Discuss with IEC and Contractor on remedial actions required;</li> <li>7. If exceedance continues, arrange meeting with IEC and ER;</li> <li>8. If exceedance stops, cease additional monitoring.</li> </ol>	<ol style="list-style-type: none"> <li>1. Check monitoring data submitted by ET;</li> <li>2. Check Contractor's working method;</li> <li>3. Discuss with ET and Contractor on possible remedial measures;</li> <li>4. Advise the ET on the effectiveness of the proposed remedial measures;</li> <li>5. Supervise Implementation of remedial measures.</li> </ol>	<ol style="list-style-type: none"> <li>1. Confirm receipt of notification of failure in writing;</li> <li>2. Notify Contractor;</li> </ol>	<ol style="list-style-type: none"> <li>1. Submit proposals for remedial to ER within 3 working days of notification;</li> <li>2. Implement the agreed proposals;</li> <li>3. Amend proposal if appropriate.</li> </ol>



EVENT	ACTION			
	ET	IEC	ER	CONTRACTOR
	LIMIT LEVEL			
1. Exceedance for one sample	<ol style="list-style-type: none"> <li>1. Identify source, investigate the causes of exceedance and propose remedial measures;</li> <li>2. Inform ER, Contractor and EPD;</li> <li>3. Repeat measurement to confirm finding;</li> <li>4. Increase monitoring frequency to daily;</li> <li>5. Assess effectiveness of Contractor's remedial actions and keep IEC, EPD and ER informed of the results.</li> </ol>	<ol style="list-style-type: none"> <li>1. Check monitoring data submitted by ET;</li> <li>2. Check Contractor's working method;</li> <li>3. Discuss with ET and Contractor on possible remedial measures;</li> <li>4. Advise the ER on the effectiveness of the proposed remedial measures;</li> <li>5. Supervise implementation of remedial measures.</li> </ol>	<ol style="list-style-type: none"> <li>1. Confirm receipt of notification of failure in writing;</li> <li>2. Notify Contractor;</li> <li>3. Ensure remedial measures properly implemented.</li> </ol>	<ol style="list-style-type: none"> <li>1. Take immediate action to avoid further exceedance;</li> <li>2. Submit proposals for remedial actions to IEC within 3 working days of notification;</li> <li>3. Implement the agreed proposals;</li> <li>4. Amend proposal if appropriate.</li> </ol>
2. Exceedance for two or more consecutive samples	<ol style="list-style-type: none"> <li>1. Notify IEC, ER, Contractor and EPD;</li> <li>2. Identify source;</li> <li>3. Repeat measurement to confirm findings;</li> <li>4. Increase monitoring frequency to daily;</li> <li>5. Carry out analysis of Contractor's working procedures to determine possible mitigation to be implemented;</li> <li>6. Arrange meeting with IEC and ER to discuss the remedial actions to be taken;</li> <li>7. Assess effectiveness of Contractor's remedial actions and keep IEC, EPD and ER informed of the results;</li> <li>8. If exceedance stops, cease additional monitoring.</li> </ol>	<ol style="list-style-type: none"> <li>1. Discuss amongst ER, ET, and Contractor on the potential remedial actions;</li> <li>2. Review Contractor's remedial actions whenever necessary to assure their effectiveness and advise the ER accordingly;</li> <li>3. Supervise the implementation of remedial measures.</li> </ol>	<ol style="list-style-type: none"> <li>1. Confirm receipt of notification of failure in writing;</li> <li>2. Notify Contractor;</li> <li>3. In consultation with the IEC, agree with the Contractor on the remedial measures to be implemented;</li> <li>4. Ensure remedial measures properly implemented;</li> <li>5. If exceedance continues, consider what portion of the work is responsible and instruct the Contractor to stop that portion of work until the exceedance is abated.</li> </ol>	<ol style="list-style-type: none"> <li>1. Take immediate action to avoid further exceedance;</li> <li>2. Submit proposals for remedial actions to IEC within 3 working days of notification;</li> <li>3. Implement the agreed proposals;</li> <li>4. Resubmit proposals if problem still not under control;</li> <li>5. Stop the relevant portion of works as determined by the ER until the exceedance is abated.</li> </ol>

## Event / Action Plan for Construction Noise

EVENT	ACTION			
	ET	IEC	ER	CONTRACTOR
Action Level	<ol style="list-style-type: none"> <li>1. <u>Notify IEC and Contractor;</u></li> <li>2. <u>Identify source, investigate the causes of exceedance and propose remedial measures;</u></li> <li>3. Report the results of investigation to the IEC, ER and Contractor;</li> <li>4. Discuss with the Contractor and formulate remedial measures;</li> <li>5. Increase monitoring frequency to check mitigation effectiveness.</li> </ol>	<ol style="list-style-type: none"> <li>1. Review the analysed results submitted by the ET;</li> <li>2. Review the proposed remedial measures by the Contractor and advise the ER accordingly;</li> <li>3. Supervise the implementation of remedial measures.</li> </ol>	<ol style="list-style-type: none"> <li>1. Confirm receipt of notification of failure in writing;</li> <li>2. Notify Contractor;</li> <li>3. Require Contractor to propose remedial measures for the analysed noise problem;</li> <li>4. Ensure remedial measures are properly implemented</li> </ol>	<ol style="list-style-type: none"> <li>1. Submit noise mitigation proposals to IEC;</li> <li>2. Implement noise mitigation proposals.</li> </ol>
Limit Level	<ol style="list-style-type: none"> <li>1. <u>Inform IEC, ER, EPD and Contractor;</u></li> <li>2. <u>Identify source;</u></li> <li>3. Repeat measurements to confirm findings;</li> <li>4. Increase monitoring frequency;</li> <li>5. Carry out analysis of Contractor's working procedures to determine possible mitigation to be implemented;</li> <li>6. Inform IEC, ER and EPD the causes and actions taken for the exceedances;</li> <li>7. Assess effectiveness of Contractor's remedial actions and keep IEC, EPD and ER informed of the results;</li> <li>8. If exceedance stops, cease additional monitoring.</li> </ol>	<ol style="list-style-type: none"> <li>1. Discuss amongst ER, ET, and Contractor on the potential remedial actions;</li> <li>2. Review Contractors remedial actions whenever necessary to assure their effectiveness and advise the ER accordingly;</li> <li>3. Supervise the implementation of remedial measures.</li> </ol>	<ol style="list-style-type: none"> <li>1. Confirm receipt of notification of failure in writing;</li> <li>2. Notify Contractor;</li> <li>3. Require Contractor to propose remedial measures for the analysed noise problem;</li> <li>4. Ensure remedial measures properly implemented;</li> <li>5. If exceedance continues, consider what portion of the work is responsible and instruct the Contractor to stop that portion of work until the exceedance is abated.</li> </ol>	<ol style="list-style-type: none"> <li>1. Take immediate action to avoid further exceedance;</li> <li>2. Submit proposals for remedial actions to IEC within 3 working days of notification;</li> <li>3. Implement the agreed proposals;</li> <li>4. Resubmit proposals if problem still not under control;</li> <li>5. Stop the relevant portion of works as determined by the ER until the exceedance is abated.</li> </ol>

# Appendix E

---

Implementation Status of

Environment mitigation Measures (Construction Phase)

## Implementation Status of Environment Mitigation Measures (Construction Phase) - Contract No. HY/2019/01

EIA Ref.	EM&A Log Ref.	Recommended Mitigation Measures	Location of the measures	Implementation Status
<b>Air Quality</b>				
S5.5.6.1	A1	1) The contractor shall follow the procedures and requirements given in the Air Pollution Control (Construction Dust) Regulation	All construction sites	Implemented
S5.5.6.2	A2	2) Proper watering of exposed spoil should be undertaken throughout the construction phase: <ul style="list-style-type: none"> <li>•Any excavated or stockpile of dusty material should be covered entirely by impervious sheeting or sprayed with water to maintain the entire surface wet and then removed or backfilled or reinstated where practicable within 24 hours of the excavation or unloading;</li> <li>•Any dusty materials remaining after a stockpile is removed should be wetted with water and cleared from the surface of roads;</li> <li>•A stockpile of dusty material should not be extend beyond the pedestrian barriers, fencing or traffic cones.</li> <li>•The load of dusty materials on a vehicle leaving a construction site should be covered entirely by impervious sheeting to ensure that the dusty materials do not leak from the vehicle;</li> <li>•Where practicable, vehicle washing facilities with high pressure water jet should be provided at every discernible or designated vehicle exit point. The area where vehicle washing takes place and the road section between the washing facilities and the exit point should be paved with concrete, bituminous materials or hardcores;</li> </ul>	All construction sites	Implemented
S5.5.6.2	A2	<ul style="list-style-type: none"> <li>•When there are open excavation and reinstatement works, hoarding of not less than 2.4m high should be provided as far as practicable along the site boundary with provision for public crossing. Good site practice shall also be adopted by the Contractor to ensure the conditions of the hoardings are properly maintained throughout the construction period;</li> <li>•The portion of any road leading only to construction site that is within 30m of a vehicle entrance or exit should be kept clear of dusty materials,</li> <li>•Surfaces where any pneumatic or power-driven drilling, cutting, polishing or other mechanical breaking operation takes place should be sprayed with water or a dust suppression chemical continuously;</li> <li>•Any area that involves demolition activities should be sprayed with water or a dust suppression chemical immediately prior to, during and immediately after the activities so as to maintain the entire surface wet;</li> <li>•Where a scaffolding is erected around the perimeter of a building under construction, effective dust screens, sheeting or netting should be provided to enclose the scaffolding from the ground floor level of the building, or a canopy should be provided from the first floor level up to the highest level of the scaffolding;</li> <li>•Any skip hoist for material transport should be totally enclosed by impervious sheeting;</li> <li>•Every stock of more than 20 bags of cement or dry pulverised fuel ash (PFA) should be covered entirely by impervious sheeting or placed in an area sheltered on the top.</li> </ul>	All construction sites	Partially Implemented

## Implementation Status of Environment Mitigation Measures (Construction Phase) - Contract No. HY/2019/01

EIA Ref.	EM&A Log Ref.	Recommended Mitigation Measures	Location of the measures	Implementation Status
S5.5.6.2	A2	<ul style="list-style-type: none"> <li>• Cement or dry PFA delivered in bulk should be stored in a closed silo fitted with an audible high level alarm which is interlocked with the material filling line and no overfilling is allowed;</li> <li>• Loading, unloading, transfer, handling or storage of bulk cement or dry PFA should be carried out in a totally enclosed system or facility, and any vent or exhaust should be fitted with an effective fabric filter or equivalent air pollution control system; and</li> <li>• Exposed earth should be properly treated by compaction, turfing, hydroseeding, vegetation planting or sealing with latex, vinyl, bitumen, shotcrete or other suitable surface stabiliser within six months after the last construction activity on the construction site or part of the construction site where the exposed earth lies</li> </ul>	All construction sites	N/A
S5.5.6.3	A3	3) The Contractor should undertake proper watering on all exposed spoil (with at least 8 times per day) throughout the construction phase.	All construction sites	Implemented
S5.5.6.4	A4	4) Project Manager to incorporate the controlled measures into the Particular Specification (PS) for the civil work. The PS should also draw the contractor's attention to the relevant latest Practice Notes issued by EPD.	All construction sites	Implemented
S5.5.6.4	A5	5) Implement regular dust monitoring under EM&A programme during the construction stage.	Selected representative dust monitoring station	Implemented
S5.5.7.1	A6	<p>The following mitigation measures should be adopted to prevent fugitive dust emissions for concrete batching plant;</p> <ul style="list-style-type: none"> <li>• Loading, unloading, handling, transfer or storage of any dusty materials should be carried out in totally enclosed system;</li> <li>• All dust-laden air or waste gas generated by the process operations should be properly extracted and vented to fabric filtering system to meet the emission limits for TSP;</li> <li>• Vents for all silos and cement/pulverised fuel ash (PFA) weighing scale should be fitted with fabric filtering system;</li> <li>• The materials which may generate airborne dusty emissions should be wetted by water spray system;</li> <li>• All receiving hoppers should be enclosed on three sides up to 3m above unloading point;</li> <li>• All conveyor transfer points should be totally enclosed;</li> <li>• All access and route roads within the premises should be paved and wetted; and</li> <li>• Vehicle cleaning facilities should be provided and used by all concrete trucks before leaving the premises to wash off any dust on the wheels and/or body.</li> </ul>	Selected representative dust monitoring station	Implemented
S5.5.2.7	A7	<p>The following mitigation measures should be adopted to prevent fugitive dust emissions at barging point:</p> <ul style="list-style-type: none"> <li>• All road surface within the barging facilities will be paved;</li> <li>• Dust enclosures will be provided for the loading ramp;</li> <li>• Vehicles will be required to pass through designated wheels wash facilities; and</li> <li>• Continuous water spray at the loading points.</li> </ul>	All construction sites	Implemented
<b>Construction Noise (Air borne)</b>				
S6.4.10	N1	<p>1) Use of good site practices to limit noise emissions by considering the following:</p> <ul style="list-style-type: none"> <li>• only well-maintained plant should be operated on-site and plant should be serviced regularly during the construction programme;</li> <li>• machines and plant (such as trucks, cranes) that may be in intermittent use should be shut down between work periods or should be throttled down to a minimum;</li> <li>• plant known to emit noise strongly in one direction, where possible, be orientated so that the noise is directed away from nearby NSRs;</li> <li>• silencers or mufflers on construction equipment should be properly fitted and maintained during the construction works;</li> </ul>	All construction sites	Implemented

## Implementation Status of Environment Mitigation Measures (Construction Phase) - Contract No. HY/2019/01

EIA Ref.	EM&A Log Ref.	Recommended Mitigation Measures	Location of the measures	Implementation Status
		<ul style="list-style-type: none"> <li>mobile plant should be sited as far away from NSRs as possible and practicable;</li> <li>material stockpiles, mobile container site office and other structures should be effectively utilised, where practicable, to screen noise from on-site construction activities.</li> </ul>		
S6.4.11	N2	2) Install temporary hoarding located on the site boundaries between noisy construction activities and NSRs. The conditions of the hoardings shall be properly maintained throughout the construction period.	All construction sites	Implemented
S6.4.12	N3	3) Install movable noise barriers (typically density@14kg/m acoustic mat or full enclosure close to noisy plants including compressor, generators, saw.	For plant items listed in Appendix 6D of the EIA report at all construction sites	N/A
S6.4.13	N4	4) Select "Quiet plants" which comply with the BS 5228 Part 1 or TM standards.	For plant items listed in Appendix 6D of the EIA report at all construction sites	Implemented
S6.4.14	N5	5) Sequencing operation of construction plants where practicable	All construction sites where practicable	Implemented
S5.1	N6	6) Implement a noise monitoring under EM&A programme.	Selected representative noise monitoring station	Implemented
<b>Waste Management (Construction Noise)</b>				
S8.3.8	WM1	<p>Construction and Demolition Material</p> <p>The following mitigation measures should be implemented in handling the waste:</p> <ul style="list-style-type: none"> <li>Maintain temporary stockpiles and reuse excavated fill material for backfilling and reinstatement;</li> <li>Carry out on-site sorting;</li> <li>Make provisions in the Contract documents to allow and promote the use of recycled aggregates where appropriate;</li> <li>Implement a trip-ticket system for each works contract to ensure that the disposal of C&amp;D materials are properly documented and verified; and</li> <li>Implement an enhanced Waste Management Plan similar to E7WBTC (Works) No. 19/2005 - "Environmental Management on Construction Sites" to encourage on-site sorting of C&amp;D materials and to minimize their generation during the course of construction.</li> <li>In addition, disposal of the C&amp;D materials onto any sensitive locations such as agricultural lands, etc. should be avoided. The Contractor shall propose the final disposal sites to the Project Proponent and get its approval before implementation.</li> </ul>	All construction sites	N/A
S8.3.9- S8.3.11	WM2	<p>C&amp;D Waste</p> <ul style="list-style-type: none"> <li>Standard formwork or pre-fabrication should be used as far as practicable in order to minimise the arising of C&amp;D materials. The use of more durable formwork or plastic facing for the construction works should be considered. Use of wooden hoardings should not be used, as in other projects. Metal hoarding should be used to enhance the possibility of recycling. The purchasing of construction materials will be carefully planned in order to avoid over ordering and wastage.</li> <li>The Contractor should recycle as much of the C&amp;D materials as possible on-site. Public fill and C&amp;D waste should be segregated and stored in different containers or skips to enhance reuse or recycling of materials and their proper disposal. Where practicable, concrete and masonry can be crushed and used as fill. Steel reinforcement bar can be used by scrap steel mills. Different areas of the sites should be considered for such segregation and storage.</li> </ul>	All construction sites	Implemented

## Implementation Status of Environment Mitigation Measures (Construction Phase) - Contract No. HY/2019/01

EIA Ref.	EM&A Log Ref.	Recommended Mitigation Measures	Location of the measures	Implementation Status
S8.2.12- S8.3.15	WM3	<p><b>Chemical Waste</b></p> <ul style="list-style-type: none"> <li>•Chemical waste that is produced, as defined by Schedule 1 of the Waste Disposal (Chemical Waste) (General) Regulation, should be handled in accordance with the Code of Practice on the Packaging, Labelling and Storage of Chemical Wastes.</li> <li>•Containers used for the storage of chemical wastes should be suitable for the substance they are holding, resistant to corrosion, maintained in a good condition, and securely closed; have a capacity of less than 450 liters unless the specification has been approved by the EPD; and display a label in English and Chinese in accordance with instructions prescribed in Schedule 2 of the regulation.</li> <li>•The storage area for chemical wastes should be clearly labelled and used solely for the storage of chemical waste; enclosed on at least 3 sides; have an impermeable floor and bunding of sufficient capacity to accommodate 110% of the volume of the largest container or 20 % of the total volume of waste stored in that area, whichever is the greatest; have adequate ventilation; covered to prevent rainfall entering; and arranged so that incompatible materials are adequately separated.</li> <li>•Disposal of chemical waste should be via a licensed waste collector; be to a facility licensed to receive chemical waste, such as the Chemical Waste Treatment Centre which also offers chemical waste collection service and can supply the necessary storage containers; or be to a reuser of the waste, under approval from the EPD.</li> </ul>	All construction sites	Implemented
S8.3.16	WM4	<p><b>Sewage</b></p> <ul style="list-style-type: none"> <li>•Adequate numbers of portable toilets should be provided for the workers. The portable toilets should be maintained in a state which will not deter the workers from utilizing these portable toilets. Night soil should be collected by licensed collectors regularly.</li> </ul>	All construction sites	Implemented
S8.3.17- S8.3.19	WM5	<p><b>General Refuse</b></p> <ul style="list-style-type: none"> <li>•General refuse generated on-site should be stored in enclosed bins or compaction units separately from construction and chemical wastes.</li> <li>•A reputable waste collector should be employed by the Contractor to remove general refuse from the site, separately from construction and chemical wastes, on a daily basis to minimize odour, pest and litter impacts. Burning of refuse on construction sites is prohibited by law.</li> <li>•Aluminium cans are often recovered from the waste stream by individual collectors if they are segregated and made easily accessible. Separate labelled bins for their deposit should be provided if feasible.</li> <li>•Office wastes can be reduced through the recycling of paper if volumes are large enough to warrant collection. Participation in a local collection scheme should be considered by the Contractor.</li> <li>•Training should be provided to workers about the concepts of site cleanliness and appropriate waste management procedure, including reduction, reuse and recycling of wastes.</li> </ul>	All construction sites	Partially Implemented

# Implementation Status of Environment Mitigation Measures (Construction Phase) - Contract No. HY/2019/01

EIA Ref.	EM&A Log Ref.	Recommended Mitigation Measures	Location of the measures	Implementation Status
Water Quality (Construction Phase)				
S9.11.1.7	W2	<p>Land Works</p> <p>General construction activities on land should also be governed by standard good working practice. Specific measures to be written into the works contracts should include:</p> <ul style="list-style-type: none"> <li>•wastewater from temporary site facilities should be controlled to prevent direct discharge to surface or marine waters;</li> <li>•sewage effluent and discharges from on-site kitchen facilities shall be directed to Government sewer in accordance with the requirements of the WPCO or collected for disposal offsite. The use of soakaways shall be avoided;</li> <li>•storm drainage shall be directed to storm drains via adequately designed sand/silt removal facilities such as sand traps, silt traps and sediment basins. Channels, earth bunds or sand bag barriers should be provided on site to properly direct stormwater to such silt removal facilities. Catchpits and perimeter channels should be constructed in advance of site formation works and earthworks;</li> <li>•silt removal facilities, channels and manholes shall be maintained and any deposited silt and grit shall be removed regularly, including specifically at the onset of and after each rainstorm;</li> <li>•temporary access roads should be surfaced with crushed stone or gravel;</li> <li>•rainwater pumped out from trenches or foundation excavations should be discharged into storm drains via silt removal facilities;</li> <li>•measures should be taken to prevent the washout of construction materials, soil, silt or debris into any drainage system;</li> <li>•open stockpiles of construction materials (e.g. aggregates and sand) on site should be covered with tarpaulin or similar fabric during rainstorms;</li> <li>•manholes (including any newly constructed ones) should always be adequately covered and temporarily sealed so as to prevent silt, construction materials or debris from getting into the drainage system, and to prevent storm run-off from getting into foul sewers;</li> <li>•discharges of surface run-off into foul sewers must always be prevented in order not to unduly overload the foul sewerage system;</li> <li>•all vehicles and plant should be cleaned before they leave the construction site to ensure that no earth, mud or debris is deposited by them on roads. A wheel washing bay should be provided at every site exit;</li> <li>•wheel wash overflow shall be directed to silt removal facilities before being discharged to the storm drain;</li> <li>•the section of construction road between the wheel washing bay and the public road should be surfaced with crushed stone or coarse gravel;</li> <li>•wastewater generated from concreting, plastering, Internal decoration, cleaning work and other similar activities, shall be screened to remove large objects;</li> <li>•vehicle and plant servicing areas, vehicle wash bays and lubrication facilities shall be located under roofed areas. The drainage in these covered areas shall be connected to foul sewers via a petrol interceptor in accordance with the requirements of the WPCO or collected for off site disposal;</li> <li>•the contractors shall prepare an oil / chemical cleanup plan and ensure that leakages or spillages are contained and cleaned up immediately;</li> <li>•waste oil should be collected and stored for recycling or disposal, in accordance with the Waste Disposal Ordinance;</li> <li>•all fuel tanks and chemical storage areas should be provided with locks and be sited on sealed areas. The storage areas should be surrounded by bunds with a capacity equal to 110% of the storage capacity of the largest tank; and</li> <li>•surface run-off from bunded areas should pass through oil/grease traps prior to discharge to the stormwater system.</li> </ul>	All land-based construction sites	Partially Implemented



## Implementation Status of Environment Mitigation Measures (Construction Phase) - Contract No. HY/2019/01

EIA Ref.	EM&A Log Ref.	Recommended Mitigation Measures	Location of the measures	Implementation Status
<b>Ecology (Construction Phase)</b>				
S10.7	E4	•Watering to reduce dust generation; prevention of siltation of freshwater habitats; Site runoff should be desilted, to reduce the potential for suspended sediments, organics and other contaminants to enter streams and standing freshwater	Seawall, reclamation area	N/A
	E9	•Dolphin vessel monitoring	North Lantau and West Lantau	N/A Completed on 1 March 2021
<b>Landscape &amp; Visual (Construction Phase)</b>				
S14.3.3.3	LV2	Mitigate both Landscape and Visual Impacts G1. Grass-hydroseed bare soil surface and stock pile areas; G2. Add planting strip and automatic irrigation system if appropriate at some portions of bridge or footbridge to screen bridge and traffic. G3. Providing aesthetic architectural design on related buildings (e.g. similar materials for PCB building facade to Airport buildings, roof planting and subtle materials for other facilities buildings and so on), and the related infrastructure (e.g. parapet planting and transparent cover for elevated footbridges) to provide harmonic atmosphere of the HKBCF. G4. Vegetation reinstatement and upgrading to disturbed areas; G5. Maximizing new tree, shrub and other vegetation planting to compensate tree felled and vegetation removed; G6. Providing planting area around peripheral of HKBCF for tree planting screening effect; G7. Providing salt-tolerant native trees along the planter strip at affected seawall and newly reclaimed coastline; and G8. Reserve of loose natural granite rocks for re-use. Provide new coastline to adopt "natural-look" by means of using armour rocks in the form of natural rock materials and planting strip area accommodating screen buffer to enhance "natural-look" of the new coastline.	All construction site areas	G6, G8, G9 and V1 were Implemented
S14.3.3.3	LV3	Mitigate Visual Impacts V1. Minimize time for construction activities during construction period.	All construction site areas	Implemented
S15.2.2	EM1	An Independent Environmental Checker needs to be employed as per the EM&A Manual.	All construction sites	Implemented
S15.5 –	EM2	1) An Environmental Team needs to be employed as per the EM&A Manual.	All construction sites	Implemented

Implementation Status of Environment Mitigation Measures (Construction Phase) - Contract No. HY/2019/01

EIA Ref.	EM&A Log Ref.	Recommended Mitigation Measures	Location of the measures	Implementation Status
S15.6		2) Prepare a systematic Environmental Management Plan to ensure effective implementation of the mitigation measures. 3) An environmental impact monitoring needs to be implementing by the Environmental Team to ensure all the requirements given in the EM&A Manual are fully complied with.		

# Appendix F

---

Summary of Site Audit in the Reporting Period

## Summary of Site Audit in the Reporting Period

Parameters	Date	Observations and Recommendations	Follow-up
Air Quality	10 June 2021	Reminder: Spent bags of cement should be removed or covered. (VCP)	NA
	30 June 2021	Observation: Spent bags of cement should be removed regularly. (VCP)	30 June 2021
	7 July 2021	Observation: Temporarily stockpile should be covered. (VCP)	8 July 2021
	15 July 2021	Observation: Water spray should be provided at the exposed area. (SPTI)	16 July 2021
	4 August 2021	Observation: Cement should be covered to prevent dust arising. (NPTI)	5 August 2021
	18 August 2021	Observation: Cement materials should be stored properly or covered. (NPTI)	19 August 2021
	25 August 2021	Observation: Cement bag should be cleared as soon as possible. (VCP)	25 August 2021
Noise	NA		
Water Quality	2 June 2021	Observation: Stagnant water should be cleared after raining. (W04)	3 June 2021
	23 June 2021	Observation: Stockpile should be covered to prevent surface runoff. (NPTI)	24 June 2021
	21 July 2021	Observation: Stagnant water should be cleared. (VCP)	21 July 2021

	21 July 2021	Observation: Sandbag should be provided near the drainage to prevent surface runoff. (NPTI)	23 July 2021
	28 July 2021	Observation: Stagnant water should be cleared after raining. (VCP)	28 July 2021
	12 August 2021	Observation: Stagnant water should be cleared. (SPTI)	13 August 2021
Chemical and Waste Management	10 June 2021	Observation: Temporary waste container should be provided for good housekeeping. (NPTI)	12 June 2021
	7 July 2021	Observation: Waste Container should be provided for good housekeeping. (VCP)	9 July 2021
	28 July 2021	Observation: Waste generated at the site should be cleared regularly. (VCP)	29 July 2021
	12 August 2021	Observation: Waste generated at the site should be collected and cleared. (VCP)	13 August 2021
Land Contamination	NA		
Landscape and Visual Impact	NA		
Permit / Licenses	NA		
Others	NA		

# Appendix G

---

Waste Flow Table

Waste Flow Table for Year 2020										
Monthly Ending	Actual Quantities of Inert C&D Materials Generated Monthly					Actual Quantities of Non-inert C&D Wastes Generated Monthly				
	Total Quantity Generated (Inert C&D)	Hard Rock and Large Broken Concrete	Reused in the Contract	Reused in other Projects	Disposed as Public Fill	Metals	Paper/ cardboard packaging	Plastics (see Note 2)	Chemical Waste	Others, e.g. general refuse
	(in '000 Kg)	(in '000 Kg)	(in '000 Kg)	(in '000 Kg)	(in '000 Kg)	(in '000 Kg)	(in '000 Kg)	(in '000 Kg)	(in '000 Kg)	(in '000 Kg)
2020 Jan	Nil	Nil	Nil	Nil	Nil	Nil	Nil	Nil	Nil	Nil
2020 Feb	720.34	Nil	720.34	Nil	Nil	Nil	0.335	Nil	Nil	2.23
2020 Mar	11344.57	Nil	10218.92	Nil	1125.65	Nil	0.669	Nil	Nil	8.05
2020 Apr	19649.37	Nil	18670.3	Nil	979.07	Nil	Nil	Nil	Nil	21.64
2020 May	26767.55	Nil	26692.04	Nil	75.51	Nil	2.42	Nil	Nil	196.64
2020 Jun	4628.13	Nil	4198.52	Nil	429.61	Nil	Nil	Nil	Nil	117.19
2020 Jul	4895.66	Nil	3398.41	Nil	1497.25	Nil	Nil	Nil	Nil	30.33
2020 Aug	4971.00	Nil	4774.49	Nil	196.51	Nil	0.418	Nil	Nil	36.91
2020 Sep	1175.26	Nil	736.1	Nil	439.16	Nil	Nil	Nil	Nil	36.16
2020 Oct	3433.83	Nil	Nil	2262.7	1171.13	Nil	Nil	Nil	Nil	32.25
2020 Nov	26481.72	Nil	Nil	24393.64	2088.08	Nil	Nil	Nil	Nil	40.09
2020 Dec	14361.90	Nil	Nil	13468.00	893.90	Nil	Nil	Nil	Nil	39.56
<b>Total</b>	<b>118429.33</b>	<b>0</b>	<b>69409.12</b>	<b>40124.34</b>	<b>8895.87</b>	<b>0</b>	<b>3.842</b>	<b>0</b>	<b>0</b>	<b>561.05</b>

Note:

- 1) The waste flow table shall also include C&D materials that are specified in the Contract to be imported for use at the Site.
- 2) Plastics refer to plastic bottles/containers, plastic sheets/foam from packaging materials.
- 3) Total Quantity Generated (Inert) = Hard Rock and Large Broken Concrete + Reused in the Contract + Disposed as Public Fill – Imported Fill

<b>Waste Flow Table for Year 2021</b>										
Monthly Ending	Actual Quantities of Inert C&D Materials Generated Monthly					Actual Quantities of Non-inert C&D Wastes Generated Monthly				
	Total Quantity Generated (Inert C&D)	Hard Rock and Large Broken Concrete	Reused in the Contract	Reused in other Projects	Disposed as Public Fill	Metals	Paper/ cardboard packaging	Plastics (see Note 2)	Chemical Waste	Others, e.g. general refuse
	(in '000 Kg)	(in '000 Kg)	(in '000 Kg)	(in '000 Kg)	(in '000 Kg)	(in '000 Kg)	(in '000 Kg)	(in '000 Kg)	(in '000 Kg)	(in '000 Kg)
2021 Jan	787.6	0	0	0	787.6	0	0	0	0	18.19
2021 Feb	254.95	0	0	0	254.95	0	0	0	0	154.94
2021 Mar	1899.61	0	0	1720.5	179.11	0	0	0	0	371.73
2021 Apr	4056.27	0	0	0	4056.27	2.13	8.17	0	0	144.08
2021 May	2738.81	0	0	0	2738.81	0.495	0	0	0	31.63
2021 Jun	1009.53	0	0	0	1009.53	0	0	0	0	90.91
2021 Jul	1384.29	0	0	0	1384.29	0	0	0	0	51.69
2021 Aug	340.46	0	0	0	340.46	5.85	0	0	0	42.99
2021 Sep										
2021 Oct										
2021 Nov										
2021 Dec										
<b>Total</b>	<b>12471.52</b>	<b>0</b>	<b>0</b>	<b>1720.5</b>	<b>10751.02</b>	<b>8.470</b>	<b>8.170</b>	<b>0</b>	<b>0</b>	<b>906.16</b>

Note:

- 1) The waste flow table shall also include C&D materials that are specified in the Contract to be imported for use at the Site.
- 2) Plastics refer to plastic bottles/containers, plastic sheets/foam from packaging materials.
- 3) Total Quantity Generated (Inert) = Hard Rock and Large Broken Concrete + Reused in the Contract + Disposed as Public Fill – Imported Fill



# Appendix H

---

Cumulative Statistics on Environmental Complaints,  
Notifications of Summons and Successful Prosecutions

### Environmental Complaints Log

Reference No.	Date of Complaint Received	Received From	Received By	Nature of Complaint	Date of Investigation	Outcome	Date of Reply

### Cumulative Statistics on Complaints

Environmental Parameters	Cumulative No. Brought Forward	No. of Complaints This Month	Cumulative Project-to-Date
Air	0	0	0
Noise	0	0	0
Water	0	0	0
Waste	0	0	0
<b>Total</b>	<b>0</b>	<b>0</b>	<b>0</b>

### Cumulative Statistics on Notification of Summons and Successful Prosecutions

Environmental Parameters	Cumulative No. Brought Forward	No. of Notification of Summons and Prosecutions This Month	Cumulative Project-to-Date
Air	0	0	0
Noise	0	0	0
Water	0	0	0
Waste	0	0	0
<b>Total</b>	<b>0</b>	<b>0</b>	<b>0</b>