

JOB No.: TCS00814/15



EP-502/2015/A

**OPERATION OF THE EXISTING TAI LAM EXPLOSIVES
MAGAZINE AT TAI SHU HA, YUEN LONG FOR
LIANTANG/HEUNG YUEN WAI BOUNDARY CONTROL
POINT PROJECT**

**MONTHLY ENVIRONMENTAL MONITORING AND AUDIT
(EM&A) REPORT – OCTOBER 2019**

PREPARED FOR

DRAGAGES HONG KONG LIMITED

Date	Reference No.	Prepared By	Certified By
8 November 2019	TCS00814/15/600/R0098v1	 Ben Tam (Environmental Consultant)	 Tam Tak Wing (Environmental Team Leader)

Version	Date	Remarks
1	8 November 2019	First Submission



Dragages Hong Kong Limited
3/F, Island Place Tower
510 King's Road
North Point
Hong Kong

Your reference:

Our reference: HKDHL01/50/106123

Date: 11 November 2019

Attention: Mr Joshua Tam

BY EMAIL & POST

(email:

joshua.tam@dragageshk.com)

Dear Sirs

Contract No.: CV/2012/08
Liantang / Heung Yuen Wai Boundary Control Point
Site Formation and Infrastructure Works – Contract 2
Consultancy Agreement No. CV/2012/08-CA031 – Independent Environmental Checker Services
for Explosives Magazine at Tai Shu Ha
Monthly EM&A Report for October 2019

We refer to email of 8 November 2019 attaching a Monthly EM&A Report for October 2019 prepared by the Environmental Team (ET) for the captioned project.

We have no comment and hereby verify the captioned report in accordance with Clause 3.2 of the Environmental Permit no. EP-502/2015/A.

Please do not hesitate to contact the undersigned on 2618 2831 should you have any queries.

Yours faithfully
ANewR CONSULTING LIMITED

Adi Lee
Independent Environmental Checker

LYMA/LCFF/csym

cc AUES – Mr Ben Tam (email: bentam@fordbusiness.com)

EXECUTIVE SUMMARY

- ES.01 The existing Tai Lam Explosives Magazine (TLEM) has been licensed and was in used by the MTR Corporation Limited (MTRC) for the construction of the Hong Kong Section of Guangzhou-Shenzhen-Hong Kong Express Rail Link (XRL) until end of February 2016, under Environmental Permit No. EP-349/2009/L, being used by the MTR XRL 824 Contractor.
- ES.02 The TLEM was handed over to Dragages Hong Kong Limited (hereinafter referred as Dragages or “permit holder”) in early March 2016 and start operating for storage the explosives for tunnel works of CEDD Contract CV/2012/08 - Liantang/Heung Yuen Wai Boundary Control Point and Associated Works Contract 2 (hereinafter referred as “the Project”). Operation of TLEM is a Designated Project to be implemented under Environmental Permit number EP-502/2015/A (hereinafter referred as “the EP-502/2015/A” or “the EP”).
- ES.03 Dragages Hong Kong Limited has appointed Action-United Environmental Services and Consulting (AUES) as the independent Environmental Team (ET) to implement the relevant EM&A program.
- ES.04 There are three phases in this project, operation, decommissioning and completion of project phase. During the operation phase no noise, air quality, water quality and ecological monitoring is required according to the EP requirement.
- ES.05 Due to the blasting work for Liantang/Heung Yuen Wai Boundary Control Point Project – Contract 2 was completed on 15 August 2017. The TLEM was closed after 17 August 2017. Decommissioning phase was commenced in mid of November 2017. But due to the construction programme arrangement, the decommission works was idled until 21 January 2018 and completed at the end of March 2018.
- ES.06 After the decommission works of TLEM was completed, reinstatement planting works was commenced on **23 April 2018** according to the *XRL EIA Vegetation Survey Report for Tai Shu Ha Road West* and the *Tree Planting and Landscape Plan TLP-10: Works in Yuen Long District (Tai Shu Ha)* (Completion of Project Phase).
- ES.07 One of the particular species for reinstatement plant in the approved *Tree Planting and Landscape Plan TLP-10* C. Parthenoxylon (黃樟) is rarely selected for cultivation both in Mainland China and Hong Kong. Therefore the Independent Tree Specialist (ITS) proposed to substitute it with other native species C. camphora (樟樹). All reinstatement plant works was completed in July 2019 and the TLEM had been handover to Land’s Department on 24 July 2019.
- ES.08 This is the **44th** Environmental Monitoring and Audit Monthly Report covering the period from **1 to 31 October 2019** (the Reporting Period).

ENVIRONMENTAL MONITORING AND AUDIT ACTIVITIES

- ES.09 Environmental monitoring activities under the EM&A program in this Reporting Month are summarized in the following table.

Issues	Environmental Monitoring Parameters / Inspection	Occasions
Inspection / Audit	ET Monthly Environmental Site Inspection	1
	IEC Monthly Environmental Site Audit	1

ENVIRONMENTAL COMPLAINT

ES.10 No environmental complaint was recorded or received in this Reporting Month. The statistics of environmental complaint are summarized in the following table.

Reporting Period	Environmental Complaint Statistics		
	Frequency	Cumulative	Complaint Nature
Since the project commencement	0	0	NA
October 2019	0	0	NA

NOTIFICATION OF SUMMONS AND SUCCESSFUL PROSECUTIONS

ES.11 No environmental summons or successful prosecutions were recorded in this Reporting Month. The statistics of environmental complaint are summarized in the following tables.

Reporting Period	Environmental Summons Statistics		
	Frequency	Cumulative	Complaint Nature
Since the project commencement	0	0	NA
October 2019	0	0	NA

Reporting Period	Environmental Prosecution Statistics		
	Frequency	Cumulative	Complaint Nature
Since the project commencement	0	0	NA
October 2019	0	0	NA

REPORTING CHANGE

ES.12 There are no reporting changes in this Reporting Month.

SITE INSPECTION BY EXTERNAL PARTIES

ES.13 No site inspection was undertaken by external parties i.e. EPD or AFCD in this Reporting Month.

FUTURE KEY ISSUES

ES.14 All the reinstatement plant works was completed in July 2019 and the site had been handover to Land's Department.

ES.15 Revised Final EM&A Summary Report had been re-submitted to EPD in the mid of October 2019. According to the EM&A Manual Section 2.1.8, EM&A programme will be carried on until the Final EM&A Summary Report approved from EPD.

Table of Contents

1	INTRODUCTION	1
	1.1 PROJECT BACKGROUND	1
	1.2 REPORT STRUCTURE	1
2	PROJECT ORGANIZATION AND ENVIRONMENTAL SUBMISSION	2
	2.1 PROJECT ORGANIZATION AND MANAGEMENT STRUCTURE	2
	2.2 CONSTRUCTION PROGRESS	2
	2.3 SUMMARY OF ENVIRONMENTAL SUBMISSIONS	2
3	SUMMARY OF IMPACT MONITORING REQUIREMENT	3
	3.1 GENERAL	3
	3.2 MONITORING PARAMETERS	3
4	WASTE MANAGEMENT	4
	4.1 GENERAL WASTE MANAGEMENT	4
	4.2 RECORDS OF WASTE QUANTITIES	4
5	SITE INSPECTION	5
	5.1 REQUIREMENTS	5
	5.2 FINDINGS / DEFICIENCIES DURING THE REPORTING MONTH	5
6	ENVIRONMENTAL COMPLAINT AND NON-COMPLIANCE	6
	6.1 ENVIRONMENTAL COMPLAINT, SUMMONS AND PROSECUTION	6
7	IMPLEMENTATION STATUS OF MITIGATION MEASURES	7
	7.1 GENERAL REQUIREMENTS	7
	7.2 TENTATIVE CONSTRUCTION ACTIVITIES IN THE COMING MONTH	7
	7.3 KEY ISSUES FOR THE COMING MONTH	7
8	CONCLUSIONS AND RECOMMENDATIONS	8
	8.1 CONCLUSIONS	8
	8.2 RECOMMENDATIONS	8

LIST OF TABLES

TABLE 2-1	STATUS OF ENVIRONMENTAL LICENSES AND PERMITS
TABLE 3-1	SUMMARY OF EM&A REQUIREMENTS
TABLE 4-1	SUMMARY OF QUANTITIES OF INERT C&D MATERIALS
TABLE 4-2	SUMMARY OF QUANTITIES OF C&D WASTES
TABLE 5-1	SITE OBSERVATIONS
TABLE 6-1	STATISTICAL SUMMARY OF ENVIRONMENTAL COMPLAINTS
TABLE 6-2	STATISTICAL SUMMARY OF ENVIRONMENTAL SUMMONS
TABLE 6-3	STATISTICAL SUMMARY OF ENVIRONMENTAL PROSECUTION
TABLE 7-1	ENVIRONMENTAL MITIGATION MEASURES

LIST OF APPENDICES

APPENDIX A	LOCATION AND SITE PLAN OF THE TLEM
APPENDIX B	ORGANIZATION STRUCTURE
APPENDIX C	ENVIRONMENTAL CHECKLIST FOR THE REPORTING MONTH
APPENDIX D	IMPLEMENTATION SCHEDULE FOR ENVIRONMENTAL MITIGATION MEASURES (ISEMM)
APPENDIX E	LETTER TO MINES DIVISION TO RETURN LICENSE AND STOCK BOOK
APPENDIX F	LETTER FROM EPD TO APPROVE AND PROPOSAL TO CHANGE THE SPECIES FOR REINSTATEMENT PLANT
APPENDIX G	LAYOUT PLAN FOR REINSTATEMENT PLANTING
APPENDIX H	MONTHLY SUMMARY WASTE FLOW TABLE

1 INTRODUCTION

1.1 PROJECT BACKGROUND

- 1.1.1 The existing Tai Lam Explosives Magazine (TLEM) has been licensed and was in used by the MTR Corporation Limited (MTRC) for the construction of the Hong Kong Section of Guangzhou-Shenzhen-Hong Kong Express Rail Link (XRL) until end of February 2016, under Environmental Permit No. EP-349/2009/L, being used by the MTR XRL 824 Contractor.
- 1.1.2 The TLEM was handed over to Dragages Hong Kong Limited (hereinafter referred as Dragages or “permit holder”) in early March 2016 and start operating for storage the explosives for tunnel works of CEDD Contract CV/2012/08 - Liantang/Heung Yuen Wai Boundary Control Point and Associated Works Contract 2 (hereinafter referred as “the Project”). Operation of TLEM is a Designated Project to be implemented under Environmental Permit number EP-502/2015/A issued on 21 September 2016 (hereinafter referred as “the EP-502/2015/A” or “the EP”).
- 1.1.3 The Project is located at the existing TLEM in Tai Shu Ha (Land Allocation GLA-TYL 1288), Yuen Long District, New Territories. The location and site plan of the Project are shown in [Appendix A](#). The existing TLEM is composed of the following components:
- Two stores each with a capacity of 400 kg explosives;
 - Secure fence;
 - CCTV system;
 - Guard house; and
 - Street fire hydrant water tank (245 m³) and 2 pumps.
- 1.1.4 Action-United Environmental Services & Consulting (hereinafter referred as “AUES”) was appointed by Dragages as an Environmental Team (hereinafter referred as “the ET”) to implement the relevant EM&A program in accordance with the EM&A Manual, as well as the associated duties.
- 1.1.5 This is the 44th Monthly EM&A Report presenting the monitoring results and inspection findings for the reporting period from 1 to 31 October 2019.

1.2 REPORT STRUCTURE

- 1.2.1 The Monthly Environmental Monitoring and Audit (EM&A) Report is structured into the following sections:-

SECTION 1	INTRODUCTION
SECTION 2	PROJECT ORGANIZATION AND ENVIRONMENTAL SUBMISSION
SECTION 3	SUMMARY OF MONITORING REQUIREMENTS
SECTION 4	WASTE MANAGEMENT
SECTION 5	SITE INSPECTIONS
SECTION 6	ENVIRONMENTAL COMPLAINTS AND NON-COMPLIANCE
SECTION 7	IMPLEMENTATION STATUES OF MITIGATION MEASURES
SECTION 8	CONCLUSIONS AND RECOMMENDATION

2 PROJECT ORGANIZATION AND ENVIRONMENTAL SUBMISSION

2.1 PROJECT ORGANIZATION AND MANAGEMENT STRUCTURE

2.1.1 Organization structure of relevant parties involved in the EM&A process and the organizational structure of the organizations responsible for implementing the EM&A program are shown in [Appendix B](#).

2.2 CONSTRUCTION PROGRESS

2.2.1 In the Reporting Period, the major construction activity conducted under the Contract is summarized in below.

- Nil

2.3 SUMMARY OF ENVIRONMENTAL SUBMISSIONS

2.4.1 Summary of the relevant permits, licences, and/or notifications on environmental protection for this Project in this Reporting Month is presented in [Table 2-1](#).

Table 2-1 Status of Environmental Licenses and Permits

Item	Description	License/Permit Status
1	Environmental permit (EP: EP-502/2015/A)	Application date: 26/08/2016 Date approved: 21/9/2016
2	Air pollution Control (Construction Dust) Regulation	Ref No.: 430503
3	Discharge License	Nil
4	Registered chemical waste producer	Nil
5	Billing Account for Disposal of Construction Waste	Account No. 7019105

2.4.2 In accordance with the EP No. EP-502/2015/A Condition 3.1, Project Environmental Monitoring and Audit (EM&A) Manual has been submitted to EPD before the commencement of using the magazine.

3 SUMMARY OF IMPACT MONITORING REQUIREMENT

3.1 GENERAL

3.1.1 The Environmental Monitoring and Audit requirements are set out in the EM&A manual. Environmental issue such as ecological impact was identified as the key issues and no air or noise monitoring is required during the completion of project phase of the Project.

3.2 MONITORING PARAMETERS

3.2.1 The EM&A programmes of completion of project phase shall cover the following environmental issues:

- Ecological impact

3.2.2 A summary of the EM&A activities is presented in *Table 3-1* below

Table 3-1 Summary of EM&A Requirements

Environmental Issue	EM&A Activities
Ecological impact	<ul style="list-style-type: none"> • To restore the habitat back to borrow area reinstatement plantation, as it was prior to the construction of the TLEM for the MTRC's use. • To ensure the proposed mitigation recommended in the approved XRL EIA for loss of green areas affected by the XRL Project, is implemented.

4 WASTE MANAGEMENT

4.1 GENERAL WASTE MANAGEMENT

4.1.1 Waste management was carried out by an on-site Environmental Officer or an Environmental Supervisor from time to time. The effective management of waste arising during the decommissioning phase will be monitored through the site audit programme. The aims of the waste audit are:

- To ensure the waste arising from the works are handled, stored, collected, transferred and disposed of in an environmentally acceptable manner; and
- To encourage the reuse and recycling of material.

4.1.2 In addition to the site inspections, the ET shall review the documentation procedures prepared by the Waste Coordinator once a month to ensure proper records are being maintained and procedures undertaken in accordance with the Waste Management Plan.

4.2 RECORDS OF WASTE QUANTITIES

4.2.1 All types of waste arising from the decommission work are classified into the following:

- Construction & Demolition (C&D) Material;
- Chemical Waste;
- General Refuse; and
- Excavated Soil.

4.2.2 Due to the reinstatement plant works was completed in July 2019 and the TLEM had been handover to Land's Department on 24 July 2019. Therefore no waste was generated at the TLEM in this Reporting Period. The quantities of wastes generated under the Contract in this Reporting Period are summarized in [Tables 4-1](#) and [4-2](#).

Table 4-1 Summary of Quantities of Inert C&D Materials

Type of Waste	Quantity	Disposal Location
Reused in this Contract (Inert) ($\text{ }^{\circ}000\text{m}^3$)	0	-
Reused in other Projects (Inert) ($\text{ }^{\circ}000\text{m}^3$)	0	-
Disposal as Public Fill (Inert) ($\text{ }^{\circ}000\text{m}^3$)	0	-

Table 4-2 Summary of Quantities of C&D Wastes

Type of Waste	Quantity	Disposal Location
Recycled Metal ($\text{ }^{\circ}000\text{kg}$)	0	-
Recycled Paper / Cardboard Packaging ($\text{ }^{\circ}000\text{kg}$)	0	-
Recycled Plastic ($\text{ }^{\circ}000\text{kg}$)	0	-
General Refuses ($\text{ }^{\circ}000\text{m}^3$)	0	-

5 SITE INSPECTION

5.1 REQUIREMENTS

5.1.1 According to the EM&A Manual, the environmental site inspection shall be formulation by ET Leader. Monthly environmental site inspections during operation and completion of project phase; weekly environmental site inspections during decommissioning phase should carry out to confirm the environmental performance.

5.2 FINDINGS / DEFICIENCIES DURING THE REPORTING MONTH

5.2.1 In the Reporting Period, joint site inspection to evaluate site environmental performance was carried out by the ER, ET, IEC and the Contractor on **30 October 2019**. No non-compliance and observation was recorded during site inspection. The checklist of the monthly inspection is shown in [Appendix C](#).

5.2.2 Observations for the site inspections and weekly audit within this Reporting Month are summarized in [Table 5-1](#).

Table 5-1 Site Observations

Date	Findings / Deficiencies	Follow-Up Status
30 October 2019	<ul style="list-style-type: none"> No environmental issue was observed during the site inspection. All reinstatement planting works was completed and the TLEM site had been handover to Land's Department. 	<ul style="list-style-type: none"> Nil

5.2.3 The TLEM was closed after 17 August 2017 due to the blasting work for Liantang/Heung Yuen Wai Boundary Control Point Project – Contract 2 was completed on 15 August 2017. The decommissioning phase for TLEM was scheduled in Mid of November 2017. However, due to the contractor arrangement, decommission of the magazine was idled until 21 January 2018. The actual decommission works of TLEM was commenced on 22 January 2018 and completed on 28 March 2018. The letter to Mines Division to return the license and stock book is shown in [Appendix E](#).

5.2.4 Furthermore, reinstatement planting works was commenced on **23 April 2018** according to the *XRL EIA Vegetation Survey Report for Tai Shu Ha Road West* and the *Tree Planting and Landscape Plan TLP-10: Works in Yuen Long District (Tai Shu Ha)* after the decommission works was completed (Completion of Project Phase) and the site inspection frequency was resumed to once per month during the reinstatement planting period.

5.2.5 One of the particular species for reinstatement plant in the approved *Tree Planting and Landscape Plan TLP-10 C*. Parthenoxylon (黃樟) is rarely selected for cultivation both in Mainland China and Hong Kong. Therefore the Independent Tree Specialist (ITS) proposed to substitute it with other native species *C. camphora* (樟樹).

5.2.6 The substitute proposal was no commented from EPD and the reinstatement plant works was completed in July 2019 and the TLEM had been handover to Land's Department on 24 July 2019. The approval letter from EPD and the substitute proposal to change the species for reinstatement plant is shown in [Appendix F](#) and the layout plan for reinstatement planting is shown in [Appendix G](#).

6 ENVIRONMENTAL COMPLAINT AND NON-COMPLIANCE

6.1 ENVIRONMENTAL COMPLAINT, SUMMONS AND PROSECUTION

6.1.1 No environmental complaint, summons and prosecution was received in this reporting period. The statistical summary table of environmental complaint, environmental summons and prosecution are presented in *Tables 6-1, 6-2 and 6-3* respectively.

Table 6-1 Statistical Summary of Environmental Complaints

Reporting Period	Environmental Complaint Statistics		
	Frequency	Cumulative	Complaint Nature
Since the project commencement	0	0	NA
October 2019	0	0	NA

Table 6-2 Statistical Summary of Environmental Summons

Reporting Period	Environmental Summons Statistics		
	Frequency	Cumulative	Complaint Nature
Since the project commencement	0	0	NA
October 2019	0	0	NA

Table 6-3 Statistical Summary of Environmental Prosecution

Reporting Period	Environmental Prosecution Statistics		
	Frequency	Cumulative	Complaint Nature
Since the project commencement	0	0	NA
October 2019	0	0	NA

7 IMPLEMENTATION STATUS OF MITIGATION MEASURES

7.1 GENERAL REQUIREMENTS

- 7.1.1 The environmental mitigation measures that recommended in the Implementation Schedule for Environmental Mitigation Measures (ISEMM) in the EM&A Manual covered the issues of ecological, noise, water, hazard to life and waste and they are summarized presented in [Appendix D](#).
- 7.1.2 The Permit Holder under the Project shall be implementing the required environmental mitigation measures according to the EM&A Manual as subject to the site condition. Environmental mitigation measures generally implemented by the Permit Holder in this Reporting Period are summarized in [Table 7-1](#).

Table 7-1 Environmental Mitigation Measures

Issues	Environmental Mitigation Measures
Ecological	<ul style="list-style-type: none"> Protect the existing tree near the magazine site To restore the habitat back to borrow area reinstatement plantation, as it was prior to the construction of the TLEM for the MTRC's use. To ensure the proposed mitigation recommended in the approved XRL EIA for loss of green areas affected by the XRL Project, is implemented.
Noise Impact	<ul style="list-style-type: none"> To ensure good site practices are adopted Noise generation minimized during decommissioning
Waste Management	<ul style="list-style-type: none"> Avoid adverse environmental impacts related to handling and disposal of waste
Water quality	<ul style="list-style-type: none"> Minimize construction site runoff during decommissioning
General	<ul style="list-style-type: none"> The site was generally kept tidy and clean.

- 7.1.3 Based on site inspection, it is considered that the environmental mitigation measures implemented by the Permit Holder in this Reporting Period are effective.

7.2 TENTATIVE CONSTRUCTION ACTIVITIES IN THE COMING MONTH

- 7.2.1 Construction activities as undertaken in the coming month for the Contract lists below:
- Nil

7.3 KEY ISSUES FOR THE COMING MONTH

- 7.3.1 Key issues to be considered in the coming month for the Permit Holder include:
- Fulfill all EP's requirement after reinstatement planting

8 CONCLUSIONS AND RECOMMENDATIONS

8.1 CONCLUSIONS

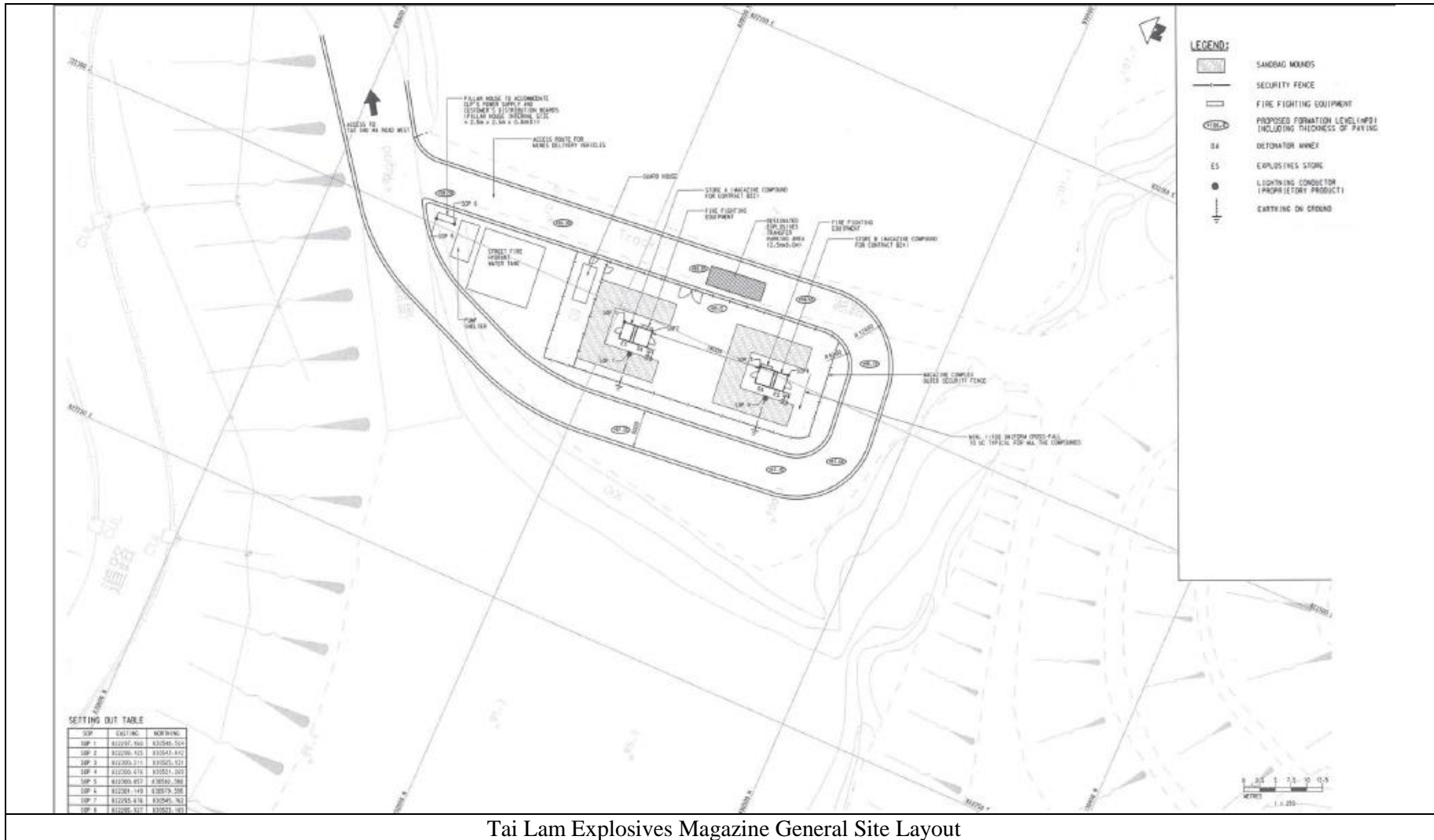
- 8.1.1 This is the 44th monthly EM&A report, covering the construction period from **1 to 31 October 2019** (the Reporting Month).
- 8.1.2 No documented complaint, notification of summons or successful prosecution was received.
- 8.1.3 The TLEM was closed after 17 August 2017. Due to the blasting work for Liantang/Heung Yuen Wai Boundary Control Point Project – Contract 2 was completed on 15 August 2017. The decommissioning phase for TLEM was scheduled in Mid of November 2017. However, due to the contractor arrangement, decommission of the magazine was idled until 21 January 2018. The actual decommission works of TLEM was commenced on 22 January 2018 and completed on 28 March 2018.
- 8.1.4 In the Reporting Period, joint site inspection to evaluate site environmental performance was carried out by the ER, ET, IEC and the Contractor on **30 October 2019**. No non-compliance and observation was recorded during site inspection. In general, the explosives magazine site is clean and tidy. The environmental performance of the Project was therefore considered satisfactory.
- 8.1.5 No site inspection was undertaken by any external party in this Reporting Month.
- 8.1.6 After the decommission works of TLEM was completed, reinstatement planting works was commenced on **23 April 2018** according to the *XRL EIA Vegetation Survey Report for Tai Shu Ha Road West* and the *Tree Planting and Landscape Plan TLP-10: Works in Yuen Long District (Tai Shu Ha)* (Completion of Project Phase).
- 8.1.7 One of the particular species for reinstatement plant in the approved *Tree Planting and Landscape Plan TLP-10* C. Parthenoxylon (黃樟) is rarely selected for cultivation both in Mainland China and Hong Kong. Therefore the Independent Tree Specialist (ITS) proposed to substitute it with other native species C. camphora (樟樹). The substitute proposal was no commented from EPD and the reinstatement plant works was completed in July 2019 and the TLEM Magazine site had been handover to Land's Department on 24 July 2019.

8.2 RECOMMENDATIONS

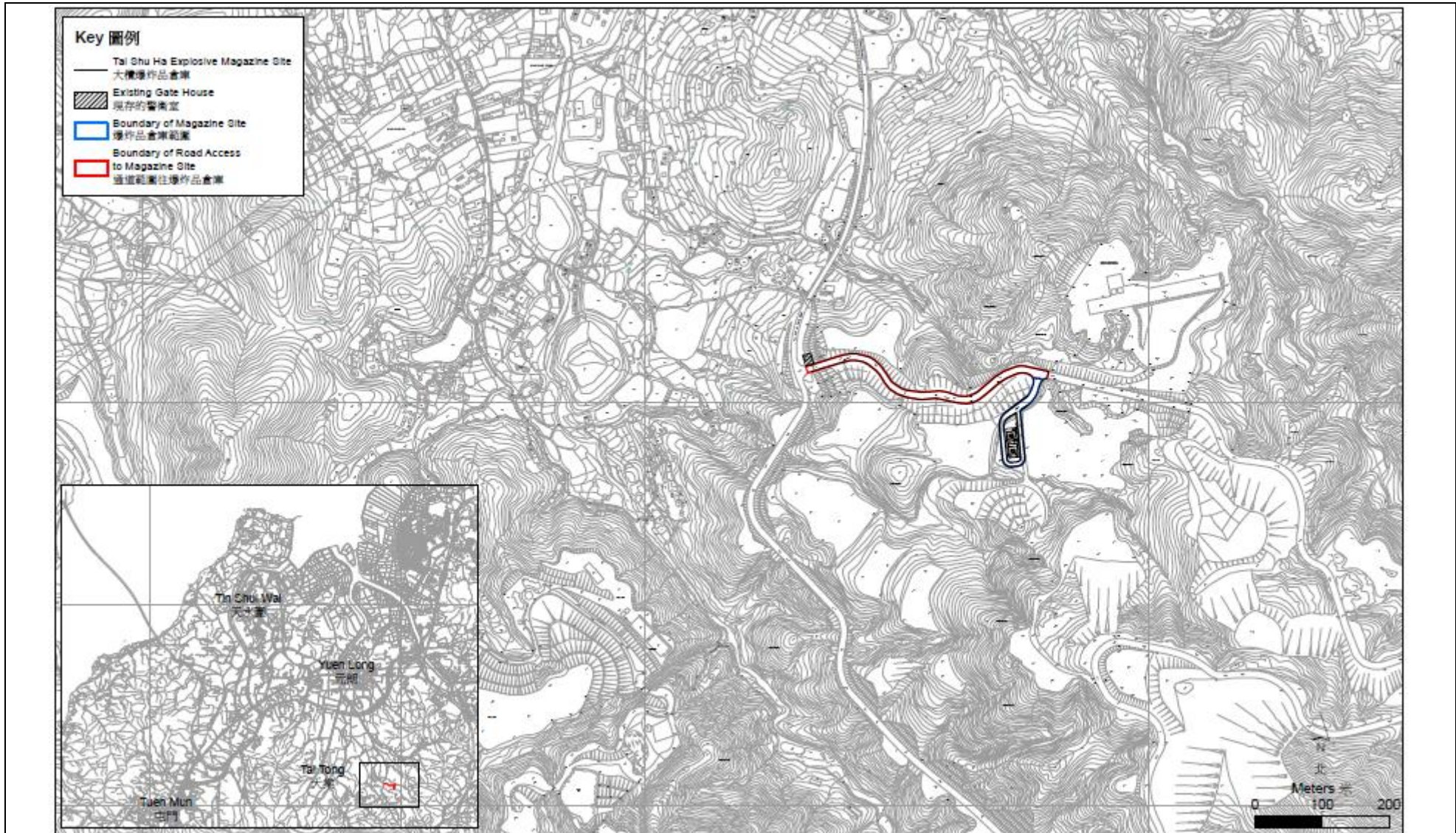
- 8.2.1 All the reinstatement plant works was completed in July 2019 and the site had been handover to Land's Department. Revised Final EM&A Summary Report had been re-submitted to EPD in the mid of October 2019. According to the EM&A Manual Section 2.1.8, EM&A programme will be carried on until the Final EM&A Summary Report approved from EPD.

Appendix A

LOCATION AND SITE PLAN OF THE TLEM



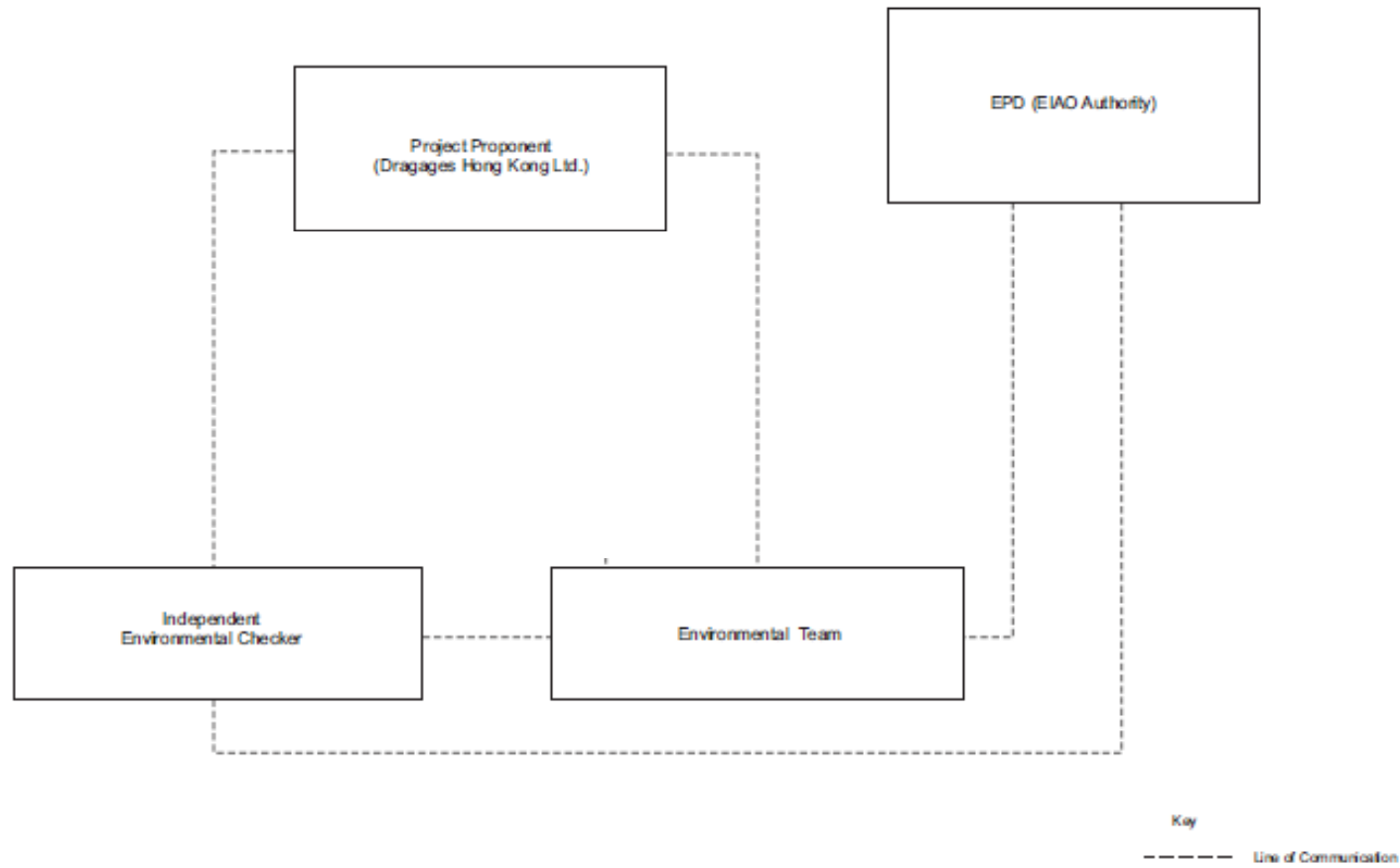
Tai Lam Explosives Magazine General Site Layout



Site Plan of the Existing Tai Lam Explosives Magazine

Appendix B

ORGANIZATION STRUCTURE



Appendix C

ENVIRONMENTAL CHECKLIST FOR THE REPORTING MONTH

Environmental Team –Site Inspection and Environmental Audit Checklist

Project: Operation of the Existing Tai Lam Explosives Magazine at Tai Shu Ha, Yuen Long for Liantang/Heung Yuen Wai Boundary Control Point Project **Checklist No:** EP- 502/2015-20191030

Date: 30 October 2019

Time: 16:15

Environmental Permit EP- 502/2015/A

Inspected by:

IEC ANewR

ET AUES

Contractor Dragages

PART A: GENERAL INFORMATION

Weather: Sunny Fine Cloudy Rainy Temperature: 25 °C
Humidity: High Moderate Low
Wind: Strong Breeze Light Calm

PART B: SITE AUDIT

Note: Not Obs.: Not Observed; Yes: Compliance; No: Non-Compliance; Follow Up: Observations requiring follow-Up actions N/A: Not Applicable	Not Obs.	Yes	No	Follow Up	N/A	Photo/Remarks
---	-----------------	------------	-----------	------------------	------------	----------------------

Section 1: Water Quality

1.01	Is effluent discharge licence for the Contract obtained?	<input checked="" type="checkbox"/>	<input type="checkbox"/>	<input type="checkbox"/>	<input type="checkbox"/>	<input type="checkbox"/>	
1.02	Is the discharge of turbid water avoided?	<input checked="" type="checkbox"/>	<input type="checkbox"/>	<input type="checkbox"/>	<input type="checkbox"/>	<input type="checkbox"/>	
1.03	Are there proper desilting facilities in the drainage systems to reduce SS levels in effluent?	<input checked="" type="checkbox"/>	<input type="checkbox"/>	<input type="checkbox"/>	<input type="checkbox"/>	<input type="checkbox"/>	
1.04	Are there channels, sandbags or bunds to direct surface run-off to sedimentation tanks?	<input checked="" type="checkbox"/>	<input type="checkbox"/>	<input type="checkbox"/>	<input type="checkbox"/>	<input type="checkbox"/>	
1.05	Are there any perimeter channels provided at site boundaries to intercept storm runoff from crossing the site?	<input type="checkbox"/>	<input checked="" type="checkbox"/>	<input type="checkbox"/>	<input type="checkbox"/>	<input type="checkbox"/>	
1.06	Is drainage system well maintained?	<input type="checkbox"/>	<input checked="" type="checkbox"/>	<input type="checkbox"/>	<input type="checkbox"/>	<input type="checkbox"/>	
1.07	Are earthworks final surfaces well compacted or protected?	<input type="checkbox"/>	<input checked="" type="checkbox"/>	<input type="checkbox"/>	<input type="checkbox"/>	<input type="checkbox"/>	
1.08	Are manholes adequately covered or temporarily sealed?	<input type="checkbox"/>	<input checked="" type="checkbox"/>	<input type="checkbox"/>	<input type="checkbox"/>	<input type="checkbox"/>	
1.09	Are there any procedures and equipment for rainstorm protection?	<input type="checkbox"/>	<input checked="" type="checkbox"/>	<input type="checkbox"/>	<input type="checkbox"/>	<input type="checkbox"/>	
1.10	Are there any wheel washing facilities?	<input checked="" type="checkbox"/>	<input type="checkbox"/>	<input type="checkbox"/>	<input type="checkbox"/>	<input type="checkbox"/>	
1.11	Are there wheel washing facilities well maintained?	<input checked="" type="checkbox"/>	<input type="checkbox"/>	<input type="checkbox"/>	<input type="checkbox"/>	<input type="checkbox"/>	
1.12	Is runoff from wheel washing facilities avoided?	<input checked="" type="checkbox"/>	<input type="checkbox"/>	<input type="checkbox"/>	<input type="checkbox"/>	<input type="checkbox"/>	
1.13	Are there toilets provided on site?	<input checked="" type="checkbox"/>	<input type="checkbox"/>	<input type="checkbox"/>	<input type="checkbox"/>	<input type="checkbox"/>	
1.14	Are toilets properly maintained?	<input checked="" type="checkbox"/>	<input type="checkbox"/>	<input type="checkbox"/>	<input type="checkbox"/>	<input type="checkbox"/>	
1.15	Are there any vehicles and plant within the site?	<input checked="" type="checkbox"/>	<input type="checkbox"/>	<input type="checkbox"/>	<input type="checkbox"/>	<input type="checkbox"/>	
1.16	Is the oil leakage or spillage from vehicle or plant avoided?	<input checked="" type="checkbox"/>	<input type="checkbox"/>	<input type="checkbox"/>	<input type="checkbox"/>	<input type="checkbox"/>	
1.17	Are there any measures to prevent leaked oil from entering the drainage system?	<input type="checkbox"/>	<input checked="" type="checkbox"/>	<input type="checkbox"/>	<input type="checkbox"/>	<input type="checkbox"/>	
1.18	Are there any measures to collect spilt cement and concrete washings during concreting works?	<input type="checkbox"/>	<input type="checkbox"/>	<input type="checkbox"/>	<input type="checkbox"/>	<input checked="" type="checkbox"/>	
1.19	Are mobile toilets provided on site and located away from the stream course?	<input checked="" type="checkbox"/>	<input type="checkbox"/>	<input type="checkbox"/>	<input type="checkbox"/>	<input type="checkbox"/>	
1.20	Is licensed collector employed for handling the waste generated from mobile toilet?	<input checked="" type="checkbox"/>	<input type="checkbox"/>	<input type="checkbox"/>	<input type="checkbox"/>	<input type="checkbox"/>	

Section 2: Air Quality

2.01	Are there wheel washing facilities with high pressure jets provided at every vehicle exit point?	<input checked="" type="checkbox"/>	<input type="checkbox"/>	<input type="checkbox"/>	<input type="checkbox"/>	<input type="checkbox"/>	
2.02	Are vehicles washed to remove any dusty materials from their bodies and wheels before leaving construction sites?	<input checked="" type="checkbox"/>	<input type="checkbox"/>	<input type="checkbox"/>	<input type="checkbox"/>	<input type="checkbox"/>	
2.03	Are the excavated materials sprayed with water during handling?	<input checked="" type="checkbox"/>	<input type="checkbox"/>	<input type="checkbox"/>	<input type="checkbox"/>	<input type="checkbox"/>	
2.04	Are stockpiles of dusty materials sprayed with water, covered or placed in sheltered areas?	<input checked="" type="checkbox"/>	<input type="checkbox"/>	<input type="checkbox"/>	<input type="checkbox"/>	<input type="checkbox"/>	
2.05	Are the access roads sprayed with water to maintain the entire road surface wet or paved?	<input type="checkbox"/>	<input checked="" type="checkbox"/>	<input type="checkbox"/>	<input type="checkbox"/>	<input type="checkbox"/>	
2.06	Is the surface where any drilling, cutting, polishing or breaking operation	<input checked="" type="checkbox"/>	<input type="checkbox"/>	<input type="checkbox"/>	<input type="checkbox"/>	<input type="checkbox"/>	

Environmental Team –Site Inspection and Environmental Audit Checklist

Note:	Not Obs.: Not Observed; Yes: Compliance; No: Non-Compliance; Follow Up: Observations requiring follow-Up actions	N/A: Not Applicable	Not Obs.	Yes	No	Follow Up	N/A	Photo/Remarks
2.07	continuously sprayed with water? Is the load on vehicles covered entirely by clean impervious sheeting?		<input type="checkbox"/>	<input checked="" type="checkbox"/>	<input type="checkbox"/>	<input type="checkbox"/>	<input type="checkbox"/>	_____
2.08	Is the loading of materials to a level higher than the side and tail boards during transportation by vehicles avoided?		<input checked="" type="checkbox"/>	<input type="checkbox"/>	<input type="checkbox"/>	<input type="checkbox"/>	<input type="checkbox"/>	_____
2.09	Is the road leading to the construction site within 30m of the vehicle entrance kept clear of dusty materials?		<input type="checkbox"/>	<input checked="" type="checkbox"/>	<input type="checkbox"/>	<input type="checkbox"/>	<input type="checkbox"/>	_____
2.10	Is dark smoke emission from plant/equipment avoided?		<input checked="" type="checkbox"/>	<input type="checkbox"/>	<input type="checkbox"/>	<input type="checkbox"/>	<input type="checkbox"/>	_____
2.11	Are site vehicles travelling within the speed limit not more than 10km/hour?		<input type="checkbox"/>	<input checked="" type="checkbox"/>	<input type="checkbox"/>	<input type="checkbox"/>	<input type="checkbox"/>	_____
2.12	Are hoardings of not less than 2.4m high provided along the site boundary, which adjoins areas accessible to the public?		<input type="checkbox"/>	<input type="checkbox"/>	<input type="checkbox"/>	<input type="checkbox"/>	<input checked="" type="checkbox"/>	_____
2.13	Is open burning avoided?		<input type="checkbox"/>	<input checked="" type="checkbox"/>	<input type="checkbox"/>	<input type="checkbox"/>	<input type="checkbox"/>	_____
2.14	All non-road vehicles using on site are granted the emission labels under the regulation?		<input checked="" type="checkbox"/>	<input type="checkbox"/>	<input type="checkbox"/>	<input type="checkbox"/>	<input type="checkbox"/>	_____
Section 3: Noise								
3.01	Are noisy equipment and activities positioned as far as practicable from the sensitive receivers?		<input checked="" type="checkbox"/>	<input type="checkbox"/>	<input type="checkbox"/>	<input type="checkbox"/>	<input type="checkbox"/>	_____
3.02	Is silenced equipment adopted?		<input checked="" type="checkbox"/>	<input type="checkbox"/>	<input type="checkbox"/>	<input type="checkbox"/>	<input type="checkbox"/>	_____
3.03	Is idle equipment turned off or throttled down?		<input checked="" type="checkbox"/>	<input type="checkbox"/>	<input type="checkbox"/>	<input type="checkbox"/>	<input type="checkbox"/>	_____
3.04	Are all plant and equipment well maintained and in good condition?		<input checked="" type="checkbox"/>	<input type="checkbox"/>	<input type="checkbox"/>	<input type="checkbox"/>	<input type="checkbox"/>	_____
3.05	Are noise barriers or enclosures provided at areas where construction activities cause noise impact on sensitive receivers?		<input type="checkbox"/>	<input type="checkbox"/>	<input type="checkbox"/>	<input type="checkbox"/>	<input checked="" type="checkbox"/>	_____
3.06	Are hand held breakers fitted with valid noise emission labels during operation?		<input type="checkbox"/>	<input type="checkbox"/>	<input type="checkbox"/>	<input type="checkbox"/>	<input checked="" type="checkbox"/>	_____
3.07	Are air compressors fitted with valid noise emission labels during operation?		<input type="checkbox"/>	<input type="checkbox"/>	<input type="checkbox"/>	<input type="checkbox"/>	<input checked="" type="checkbox"/>	_____
3.08	Are flaps and panels of mechanical equipment closed during operation?		<input checked="" type="checkbox"/>	<input type="checkbox"/>	<input type="checkbox"/>	<input type="checkbox"/>	<input type="checkbox"/>	_____
3.09	Are Construction Noise Permit(s) applied for percussive piling works or construction activities out of restricted hours?		<input type="checkbox"/>	<input type="checkbox"/>	<input type="checkbox"/>	<input type="checkbox"/>	<input checked="" type="checkbox"/>	_____
Section 4: Waste/Chemical Management								
4.01	Waste Management Plan had been submit to Engineer for approval.		<input type="checkbox"/>	<input checked="" type="checkbox"/>	<input type="checkbox"/>	<input type="checkbox"/>	<input type="checkbox"/>	_____
4.02	Are receptacles available for general refuse collection?		<input checked="" type="checkbox"/>	<input type="checkbox"/>	<input type="checkbox"/>	<input type="checkbox"/>	<input type="checkbox"/>	_____
4.03	Is general refuse sorting or recycling implemented?		<input checked="" type="checkbox"/>	<input type="checkbox"/>	<input type="checkbox"/>	<input type="checkbox"/>	<input type="checkbox"/>	_____
4.04	Is general refuse disposed of properly and regularly?		<input type="checkbox"/>	<input checked="" type="checkbox"/>	<input type="checkbox"/>	<input type="checkbox"/>	<input type="checkbox"/>	_____
4.05	Is the Contractor registered as a chemical waste producer?		<input type="checkbox"/>	<input type="checkbox"/>	<input type="checkbox"/>	<input type="checkbox"/>	<input checked="" type="checkbox"/>	_____
4.06	Are the chemical waste containers properly labelled?		<input type="checkbox"/>	<input type="checkbox"/>	<input type="checkbox"/>	<input type="checkbox"/>	<input checked="" type="checkbox"/>	_____
4.07	Are the chemical wastes stored in proper storage areas?		<input type="checkbox"/>	<input type="checkbox"/>	<input type="checkbox"/>	<input type="checkbox"/>	<input checked="" type="checkbox"/>	_____
4.08	Is the chemical waste storage area properly labelled?		<input type="checkbox"/>	<input type="checkbox"/>	<input type="checkbox"/>	<input type="checkbox"/>	<input checked="" type="checkbox"/>	_____
4.09	Is the chemical waste storage area used for storage of chemical waste only?		<input type="checkbox"/>	<input type="checkbox"/>	<input type="checkbox"/>	<input type="checkbox"/>	<input checked="" type="checkbox"/>	_____
4.10	Are incompatible chemical wastes stored in different areas?		<input type="checkbox"/>	<input type="checkbox"/>	<input type="checkbox"/>	<input type="checkbox"/>	<input checked="" type="checkbox"/>	_____
4.11	Are the chemical wastes disposed of by licensed collectors?		<input type="checkbox"/>	<input type="checkbox"/>	<input type="checkbox"/>	<input type="checkbox"/>	<input checked="" type="checkbox"/>	_____
4.12	Are trip tickets for chemical wastes disposal available for inspection?		<input type="checkbox"/>	<input type="checkbox"/>	<input type="checkbox"/>	<input type="checkbox"/>	<input checked="" type="checkbox"/>	_____
4.13	Are chemical/fuel storage areas bounded?		<input checked="" type="checkbox"/>	<input type="checkbox"/>	<input type="checkbox"/>	<input type="checkbox"/>	<input type="checkbox"/>	_____
4.14	Are designated areas identified for storage and sorting of construction wastes?		<input checked="" type="checkbox"/>	<input type="checkbox"/>	<input type="checkbox"/>	<input type="checkbox"/>	<input type="checkbox"/>	_____
4.15	Are construction wastes sorted (inert and non-inert) on site?		<input checked="" type="checkbox"/>	<input type="checkbox"/>	<input type="checkbox"/>	<input type="checkbox"/>	<input type="checkbox"/>	_____

Environmental Team –Site Inspection and Environmental Audit Checklist

Note: Not Obs.: Not Observed; Yes: Compliance; No: Non-Compliance; Follow Up: Observations requiring follow-Up actions N/A: Not Applicable		Not Obs.	Yes	No	Follow Up	N/A	Photo/ Remarks
4.16	Are construction wastes reused?	<input checked="" type="checkbox"/>	<input type="checkbox"/>	<input type="checkbox"/>	<input type="checkbox"/>	<input type="checkbox"/>	_____
4.17	Is construction waste disposed of properly?	<input checked="" type="checkbox"/>	<input type="checkbox"/>	<input type="checkbox"/>	<input type="checkbox"/>	<input type="checkbox"/>	_____
4.18	Are site hoardings and signboards made of durable materials instead of timber?	<input checked="" type="checkbox"/>	<input type="checkbox"/>	<input type="checkbox"/>	<input type="checkbox"/>	<input type="checkbox"/>	_____
4.19	Is trip ticket system implemented for the disposal of construction wastes and records available for inspection?	<input type="checkbox"/>	<input checked="" type="checkbox"/>	<input type="checkbox"/>	<input type="checkbox"/>	<input type="checkbox"/>	_____
4.20	Is relevant license/ permit for disposal of construction waste or excavated materials available for inspection?	<input type="checkbox"/>	<input checked="" type="checkbox"/>	<input type="checkbox"/>	<input type="checkbox"/>	<input type="checkbox"/>	_____
Section 5: Landscape & Visual							
5.01	Are retained and transplanted trees in health condition?	<input type="checkbox"/>	<input checked="" type="checkbox"/>	<input type="checkbox"/>	<input type="checkbox"/>	<input type="checkbox"/>	_____
5.02	Are retained and transplanted trees properly protected?	<input type="checkbox"/>	<input checked="" type="checkbox"/>	<input type="checkbox"/>	<input type="checkbox"/>	<input type="checkbox"/>	_____
5.03	Are surgery works carried out for the damaged trees?	<input type="checkbox"/>	<input checked="" type="checkbox"/>	<input type="checkbox"/>	<input type="checkbox"/>	<input type="checkbox"/>	_____
5.04	No damage to trees outside site boundary due to construction activities?	<input type="checkbox"/>	<input checked="" type="checkbox"/>	<input type="checkbox"/>	<input type="checkbox"/>	<input type="checkbox"/>	_____
Section 6: Hazard to Life							
6.01	Is the security plan addresses different alert security levels?	<input type="checkbox"/>	<input type="checkbox"/>	<input type="checkbox"/>	<input type="checkbox"/>	<input checked="" type="checkbox"/>	_____
6.02	Is the emergency plan (i.e. magazine operational manual) shall be followed and amended if necessary to address uncontrolled fire in magazine area and transport?	<input type="checkbox"/>	<input type="checkbox"/>	<input type="checkbox"/>	<input type="checkbox"/>	<input checked="" type="checkbox"/>	_____
6.03	Is good house-keeping maintained within the site magazine area?	<input type="checkbox"/>	<input checked="" type="checkbox"/>	<input type="checkbox"/>	<input type="checkbox"/>	<input type="checkbox"/>	_____
6.04	Is the site magazine kept locked all the time and provided with proper security measures?	<input type="checkbox"/>	<input type="checkbox"/>	<input type="checkbox"/>	<input type="checkbox"/>	<input checked="" type="checkbox"/>	_____
6.05	No delivery vehicles remained within the site secured fence off magazine store area?	<input type="checkbox"/>	<input type="checkbox"/>	<input type="checkbox"/>	<input type="checkbox"/>	<input checked="" type="checkbox"/>	_____
Section 7: Others							
7.01	Are relevant Environmental Permits posted at all vehicle site entrances/exits?	<input type="checkbox"/>	<input checked="" type="checkbox"/>	<input type="checkbox"/>	<input type="checkbox"/>	<input type="checkbox"/>	_____

Environmental Team –Site Inspection and Environmental Audit Checklist

Follow up Site inspection findings dated: (30 September 2019)


Follow up Site inspection findings	
Nil	NA

Finding Non-compliance in this weekly site inspection:

Nil

Observation in this weekly site inspection: (30 October 2019)

Observation



No environmental issue was observed during the site inspection. All reinstatement planting works was completed and the TSH Explosives Magazine site had been handover to Land's Department on 24 July 2019.

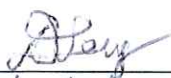
Reminder:

Nil

IEC's representative

ET's representative

Contractor's representative (EO)





Name

Frank Leung

Ben Tam

Date:

30 / 10 / 2019

30 October 2019

30/10/2019

Appendix D

IMPLEMENTATION SCHEDULE FOR ENVIRONMENTAL MITIGATION MEASURES (ISEMM)

Implementation Schedule of Recommended Mitigation Measures

Note: Chapters 1 to 2 of the EIA report present the background information of the Project and Project Description. Chapters 3 to 8 of the EIA report present the EIA findings and mitigation measures, as described below with cross-reference to the EIA report. Chapters 9 & 10 summarize the environmental monitoring and audit requirements and provide a conclusion along with a summary of the environmental outcomes of the EIA.

* O = Operation; D = Decommissioning of the TLEM; CoP = Completion of Project

EIA Ref	EM& A Ref	Recommended Mitigation Measures	Objectives of the Recommended Measures & Main Concerns to address	Implementation Agent	Location/ Duration of the measure	Implementation Stage (O, D, CoP*)?	Relevant Legislation & Guidelines	
		Ecological Impact (Operation & Completion of Project)						
S3.5		<ul style="list-style-type: none"> Reinstatement planting should be carried out at the site according to the XRL EIA Vegetation Survey Report for Tai Shu Ha Road West and the Tree Planting and Landscape Plan TLP-10: Works in Yuen Long District (Tai Shu Ha) (hereafter TLP). 	<p>To restore the habitat back to borrow area reinstatement plantation, as it was prior to the construction of the TLEM for the MTRC's use.</p> <p>To ensure the proposed mitigation recommended in the approved XRL EIA for loss of green areas affected by the XRL Project, is implemented.</p>	The reinstatement planting will be implemented by DHK. The maintenance agent will be DLO as confirmed in the TLP.	Tai Lam Explosives Magazine (TLEM) site/ During - site restoration prior to mitigation planting, Planting & Establishment period of at least 12 months.	CoP	<p>XRL EIA Vegetation Survey Report for Tai Shu Ha Road West</p> <p>Tree Planting and Landscape Plan TLP-10: Works in Yuen Long District (Tai Shu Ha)</p> <p>DEVB TCW No. 10/2013 – Tree Preservation (supersedes ETWB TC(W) No. 3/2006)</p>	
		Noise Impact (Operation and Decommissioning)						
S4.4.1		No adverse impacts anticipated.	To ensure good site practices are adopted and noise generation minimized during decommissioning	Contractor for DHK	Approximately one month during decommissioning of the TLEM	D	<i>Recommended Clauses for Construction Contracts – Section 3 - Noise Control</i>	
		Air Quality (Operation and Decommissioning)						
S5		<ul style="list-style-type: none"> Not applicable (n/a) - no adverse impacts anticipated. 	n/a	n/a	n/a	n/a	n/a	

Implementation Schedule of Recommended Mitigation Measures

EIA Ref	EM&A Ref	Recommended Mitigation Measures	Objectives of the Recommended Measures & Main Concerns to address	Implementation Agent	Location/ Duration of the measure	Implementation Stage (O, D, CoP*)?	Relevant Legislation & Guidelines
		<i>Waste Management (Operation and Decommissioning)</i>					
S6.5		<ul style="list-style-type: none"> Good site management practice will be adopted by the contractors of the Project and waste on-site will be properly segregated to increase the potential for reuse and recycling. General refuse is removed from the Project Site regularly (i.e. once per day). 	Avoid adverse environmental impacts related to handling and disposal of waste.	DHK	Tai Lam Explosives Magazine (TLEM) site/ During operation of TLEM & approximately one month during decommissioning of the TLEM	O, D	<i>Waste Disposal Ordinance (WDO) (Cap 354); Waste Disposal (Charges for Disposal of Construction Waste) Regulation (Cap 354N); Waste Disposal (Chemical Waste) (General) Regulation (Cap 354C); Land (Miscellaneous Provisions) Ordinance (Cap 28); and Public Health and Municipal Services Ordinance (Cap 132) - Public Cleansing and Prevention of Nuisances Regulation.</i>
S6.5		<ul style="list-style-type: none"> Chemical refuse will be properly stored and disposed of separately to general waste. 	Avoid contamination by chemical waste.	Licensed Chemical Waste Collector for DHK	Tai Lam Explosives Magazine (TLEM) site/ During operation of TLEM & approximately one month during decommissioning of the TLEM	O, D	<i>Code of Practice on the Packaging, Labelling and Storage of Chemical Wastes (1992), EPD, Hong Kong Government</i>

Implementation Schedule of Recommended Mitigation Measures

EIA Ref	EM& A Ref	Recommended Mitigation Measures	Objectives of the Recommended Measures & Main Concerns to address	Implementation Agent	Location/ Duration of the measure	Implementation Stage (O, D, CoP*)?	Relevant Legislation & Guidelines
		<i>Other (Operation and Decommissioning)</i>					
S7.1		<p>No adverse impacts anticipated. For good measure adopt the following good practice measures:</p> <ul style="list-style-type: none"> Surface run-off from construction site should be discharged into storm drains via adequately designed sand/silt removal facilities such as sand traps, silt traps and sediment basins. Channels or earth bunds or sand bag barriers should be provided on site to properly direct stormwater to such silt removal facilities. Perimeter channels at site boundaries should be provided where necessary to intercept storm run-off from outside the site so that it will not wash across the site. Catchpits and perimeter channels should be constructed in advance of site formation works and earthworks. 	Minimize construction site runoff during decommissioning	Contractor for DHK	TLEM site /Approximately one month during decommissioning of the TLEM	D	<i>Practice Note for Professional Persons on Construction Site Drainage (ProPECC PN1/94)</i>
S7.1		<ul style="list-style-type: none"> Silt removal facilities, channels and manholes should be maintained and the deposited silt and grit should be removed regularly, at the onset of and after each rainstorm to ensure that these facilities are functioning properly at all times. 	Minimize construction site runoff during decommissioning	Contractor for DHK	TLEM site /Approximately one month during decommissioning of the TLEM	D	<i>Practice Note for Professional Persons on Construction Site Drainage (ProPECC PN1/94)</i>
S7.1		<ul style="list-style-type: none"> Earthworks final surfaces should be well compacted and the subsequent permanent work or surface protection should be carried out immediately after the final surfaces are formed to prevent erosion caused by rainstorms. Appropriate drainage like intercepting channels should be provided where necessary. 	Minimize construction site runoff during decommissioning	Contractor for DHK	TLEM site /Approximately one month during Decommissioning of the TLEM	D	<i>Practice Note for Professional Persons on Construction Site Drainage (ProPECC PN1/94)</i>

Implementation Schedule of Recommended Mitigation Measures

EIA Ref	EM&A Ref	Recommended Mitigation Measures	Objectives of the Recommended Measures & Main Concerns to address	Implementation Agent	Location/ Duration of the measure	Implementation Stage (O, D, CoP*)?	Relevant Legislation & Guidelines
S7.1		<ul style="list-style-type: none"> Manholes (including newly constructed ones) should always be adequately covered and temporarily sealed so as to prevent silt, construction materials or debris from getting into the drainage system, and to prevent storm run-off from getting into foul sewers. Discharge of surface run-off into foul sewers must always be prevented in order not to unduly overload the foul sewerage system. 	Minimize construction site runoff during decommissioning	Contractor for DHK	TLEM site / Approximately one month during decommissioning of the TLEM	D	<i>Practice Note for Professional Persons on Construction Site Drainage (ProPECC PN1/94)</i>
S7.1		<ul style="list-style-type: none"> Precautions and actions, as stipulated in Appendix A2 of <i>ProPECC PN1/94</i>, should be taken at any time of year when rainstorms are likely, when a rainstorm is imminent or forecast, or during and after rainstorms. 	Minimize construction site runoff during decommissioning	Contractor for DHK	TLEM site / Approximately one month during Decommissioning of the TLEM	D	<i>Practice Note for Professional Persons on Construction Site Drainage (ProPECC PN1/94)</i>
S7.1		<ul style="list-style-type: none"> To minimize erosion of exposed soil in between the removal of paved area and the re-vegetation / plantation, exposed soil should be covered with geotextile promptly after the removal works. <p>Hazard to Life (Operation - Storage)</p>	Minimize construction site runoff and soil erosion during decommissioning	Contractor for DHK	TLEM site / Approximately one month during Decommissioning of the TLEM	D	-
S8.9.1		<ul style="list-style-type: none"> Ensure the security plan addresses different alert security levels. The corresponding security procedure should be implemented with respect to prevailing security alert status announced by the Government. 	Reduce opportunity for arson/ deliberate initiation of explosives.	DHK	TLEM site / Throughout operation of the Project	O	-
S8.9.1 & S8.9.2 & S8.9.3		<ul style="list-style-type: none"> Emergency plan (i.e. magazine operational manual) shall be followed and amended if necessary to address uncontrolled fire in magazine area and transport. The case of fire near an explosive carrying truck in jammed traffic should also be covered. Drill of the emergency plan should be carried out at regular intervals. 	Minimize risk of uncontrolled fire in TLEM and along transport route	DHK	For TLEM site and Transport route / Throughout operation of the Project	O	-

Implementation Schedule of Recommended Mitigation Measures

EIA Ref	EM&A Ref	Recommended Mitigation Measures	Objectives of the Recommended Measures & Main Concerns to address	Implementation Agent	Location/ Duration of the measure	Implementation Stage (O, D, CoP*)?	Relevant Legislation & Guidelines
S8.9.1		<ul style="list-style-type: none"> Adverse weather working guideline should be followed and amended if necessary to clearly define procedure for transport explosives during thunderstorm. 	Minimize explosive truck accident frequency.	DHK	TLEM site / Throughout operation of the Project	O	-
S8.9.1		<ul style="list-style-type: none"> The Magazine storage quantities need to be reported on a monthly basis 	Ensure that the two day storage capacity is not exceeded	Contractor for DHK	TLEM site / Throughout operation of the Project	O	Dangerous Goods Ordinance
S8.9.2		<ul style="list-style-type: none"> A suitable work control system should be followed and amended if necessary, such as an operational manual including Permit-to-Work system 	Ensure work activities undertaken during the operation of the Magazine are properly controlled.	DHK	For TLEM site / Throughout operation of the Project	O	-
S8.9.2		<ul style="list-style-type: none"> Good house-keeping within the Magazine 	Ensure combustible materials are not allowed to accumulate.	Contractor for DHK	For TLEM site / Throughout operation of the Project	O	-
S8.9.2		<ul style="list-style-type: none"> Good housekeeping outside the Magazine stores to be followed. 	To ensure combustibles (including vegetation) are removed and reduce risk and severity of any accidental fire onsite.	Contractor for DHK	For TLEM site / Throughout operation of the Project	O	-
S8.9.2		<ul style="list-style-type: none"> The Magazine shall be without open drains, traps, pits or pockets into which any molten ammonium nitrate could flow and be confined in the event of a fire. 	Reduce risk of severity of accidental fire and contamination of site.	DHK	For TLEM site / Throughout operation of the Project	O	-
S8.9.2		<ul style="list-style-type: none"> The Magazine building shall be regularly checked for water seepage through the roof, walls or floor. 	Ensure explosives being stored remain dry.	Contractor for DHK	For TLEM site / Throughout operation of the Project	O	-
S8.9.2		<ul style="list-style-type: none"> Caked explosives shall be disposed of in an appropriate manner. 	Ensure general safe practice	Contractor for DHK	For TLEM site / Throughout operation of the Project	O	-

Implementation Schedule of Recommended Mitigation Measures

EIA Ref	EM&A Ref	Recommended Mitigation Measures	Objectives of the Recommended Measures & Main Concerns to address	Implementation Agent	Location/ Duration of the measure	Implementation Stage (O, D, CoP*)?	Relevant Legislation & Guidelines
S8.9.3		<ul style="list-style-type: none"> If disposal is required for small quantities, it should be made in a controlled and safe manner by a Registered Shotfirer. 	To reduce the risk during explosives transport	Registered Shotfirer for DHK	For TLEM site / Throughout operation of the Project	O	-
S8.9.2		<ul style="list-style-type: none"> Delivery vehicles shall not be permitted to remain within the secured fenced off magazine store area 	Avoid accidents involving vehicles within the site boundary.	Contractor for DHK	For TLEM site / Throughout operation of the Project	O	-
S8.9.2		<ul style="list-style-type: none"> A speed limit within the magazine area should be enforced 	Reduce the risk of a vehicle impact or incident within the Magazine area.	Contractor for DHK	For TLEM site / Throughout operation of the Project	O	-
S8.9.2		<ul style="list-style-type: none"> Traffic Management should be implemented within the Magazine site, to ensure that no more than one (1) vehicle will be loaded at any time. 	Avoid accidents involving multiple vehicles within the site boundary.	Contractor for DHK	For TLEM site / Throughout operation of the Project	O	-
<i>Hazard to Life (Operation - Transport)</i>							
S8.9.1		<ul style="list-style-type: none"> Truck design should comply with the Requirements for Approval of an Explosives Delivery Vehicle (CEDD 2) and limit the amount of combustibles in the cabin. The fuel carried in the fuel tank should also be minimised to reduce the duration of any fire. 	Ensure delivery vehicle is as safe as possible.	Contractor for DHK	Transport vehicle/ Throughout operation of the Project	O	-
S8.9.1		<ul style="list-style-type: none"> Implement a dedicated training programme for both the driver and his attendants, including regular briefing sessions, implementation of a defensive driving attitude. 	Minimize explosive truck accident frequency.	DHK	Vehicle driver & attendants for Transport route/ Throughout operation of the Project	O	-
S8.9.1		<ul style="list-style-type: none"> As far as practicable combine explosive deliveries for a given work area 	Reduce number of journeys required	Contractor for DHK	Transport route/ Throughout operation of the Project	O	-

Implementation Schedule of Recommended Mitigation Measures

EIA Ref	EM&A Ref	Recommended Mitigation Measures	Objectives of the Recommended Measures & Main Concerns to address	Implementation Agent	Location/ Duration of the measure	Implementation Stage (O, D, CoP*)?	Relevant Legislation & Guidelines
S8.9.1		<ul style="list-style-type: none"> Only the required quantity of explosives for a particular blast should be transported. 	Avoid the return of unused explosives to the Magazine.	Contractor for DHK	Transport route/ Throughout operation of the Project	O	-
S8.9.1		<ul style="list-style-type: none"> Whenever practicable, a minimum headway between two consecutive truck convoys of 10 minutes is recommended and separation of vehicles should be maintained during the whole trip. 	Minimize explosive truck accident severity.	Contractor for DHK	Transport route/ Throughout operation of the Project	O	-
S8.9.1		<ul style="list-style-type: none"> Implement a better emergency response and training to make sure the adequate fire extinguishers are used and attempt is made to evacuate the area of the incident or securing the explosive load if possible. All explosive vehicles should be equipped with the required amount and type of fire extinguishers and shall be agreed with Mines Division. 	Minimize explosive truck fire involvement frequency.	Contractor for DHK	Transport route/ Throughout operation of the Project	O	-
S8.9.3		<ul style="list-style-type: none"> Detonators shall not be transported in the same vehicle with other Class 1 explosives and separation of vehicles should be maintained during the trip. 	Minimize explosive truck accident frequency.	Contractor for DHK	Transport vehicle/ Throughout operation of the Project		-
S8.9.3		<ul style="list-style-type: none"> Location for stopping and unloading from truck to be provided as close as possible to shaft, free from dropped loads, hot work, etc. during time of unloading. 	To ensure that the risks from the proposed explosives storage and transport would not be unacceptable	Contractor for DHK	End of Transport route/ Throughout operation of the Project	O	-
S8.9.3		<ul style="list-style-type: none"> Develop procedure to ensure that parking space on the site is available for the explosive truck. Confirmation of parking space should be communicated to truck drivers before delivery. If parking space on site cannot be secure, delivery should not commence. 	To ensure that the risks from the proposed explosives storage and transport would not be unacceptable	Contractor for DHK	End of Transport route/ Throughout operation of the Project	O	-
S8.9.3		<ul style="list-style-type: none"> Ensure lining is provided within the transportation box on the vehicle and in good condition before transportation. 		Contractor for DHK	Transport vehicle/ Throughout operation of the Project	O	-

Implementation Schedule of Recommended Mitigation Measures

EIA Ref	EM& A Ref	Recommended Mitigation Measures	Objectives of the Recommended Measures & Main Concerns to address	Implementation Agent	Location/ Duration of the measure	Implementation Stage (O, D, CoP*)?	Relevant Legislation & Guidelines
S8.9.3		<ul style="list-style-type: none"> Ensure that packaging of detonators remains intact until handed over at blasting site. 	To meet the ALARP requirement.	Contractor for DHK	End of Transport route/ Throughout operation of the Project	O	-
S8.9.3		<ul style="list-style-type: none"> Emergency plan to include activation of fuel and battery isolation switches on vehicle when fire breaks out. 	Prevent fire spreading and reducing likelihood of prolonged fire leading to explosion.	Contractor for DHK	Transport vehicle/ Throughout operation of the Project	O	-
S8.9.3		<ul style="list-style-type: none"> Ensure that cartridged emulsion packages are damage free before every trip. 	To meet the ALARP requirement.	Contractor for DHK	Transport route/ Throughout operation of the Project	O	-
S8.9.3		<ul style="list-style-type: none"> Ensure that explosives will be offloaded and stored away from the railway protection area according to the MTRCL railway protection area plan. 	To meet the ALARP requirement.	Contractor for DHK	The three worksites (i.e. Mid-Ventilation Adit, North Portal and South Portal)/ Throughout operation of the Project	O	-

Implementation Schedule of Recommended Mitigation Measures

EIA Ref	EM&A Ref	Recommended Mitigation Measures	Objectives of the Recommended Measures & Main Concerns to address	Implementation Agent	Location/ Duration of the measure	Implementation Stage (O, D, CoP*)?	Relevant Legislation & Guidelines
S8.9.3		<p>Vehicles should meet Licenced Vehicle Safety Requirements including:</p> <ul style="list-style-type: none"> • Mobile telephone equipment; • Battery isolation switch; • Front mounted exhaust with spark arrestor; • Fuel level should be kept as far as possible to the minimum level required for the transport of explosives; • Minimum 1 × 9 kg water based AFFF fire extinguisher to be provided; • Minimum 1 × 9 kg dry chemical powder fire extinguisher to be provided; • Horizontal fire screen on cargo deck and vertical fire screen mounted at least 150mm behind the drivers cab and 100mm from the steel cargo compartment, the vertical screen shall protrude 150mm in excess of all three (3) sides of the steel cargo compartment; • Cigarette lighter removed; • Two (2) battery powered torches for night deliveries. 	Prevent fire spreading and reducing likelihood of prolonged fire leading to explosion.	Contractor for DHK	Transport vehicle/ Throughout operation of the Project	O	CEDD's <i>Guidance Note on Requirements for Approval of an Explosive Delivery Vehicle</i>
S8.9.3		<p>Vehicles shall be dedicated explosive transport vehicles and should be maintained in good operating condition;</p> <ul style="list-style-type: none"> • Daily checks on tyres and vehicle integrity. • Regular monthly vehicle inspections for fuel system, exhaust system, brakes, electrics, battery, cooling system and engine oil leaks. • Vehicle log book in which monthly inspections and maintenance requirements are recorded 	Ensure vehicle remains as safe as possible	Contractor for DHK	Transport vehicle/ Throughout operation of the Project	O	-

Implementation Schedule of Recommended Mitigation Measures

EIA Ref	EM&A Ref	Recommended Mitigation Measures	Objectives of the Recommended Measures & Main Concerns to address	Implementation Agent	Location/ Duration of the measure	Implementation Stage (O, D, CoP*)?	Relevant Legislation & Guidelines
S8.9.3		<ul style="list-style-type: none"> • Drivers should be selected based on good safety record, and medical checks. Use only experienced driver(s) with good safety record. • It is recommended that drivers be registered by the Commissioner of Mines; over the age of 25 years with proven accident free record; have more than seven (7) year driving experience without suspension; .hold a Driving License for the class of vehicle for at least one (1) year; adopt a safe driving practice including having attended a defensive driving course; pass a medical check and are assessed as fit to drive explosives vehicles; and are not dependent on banned substances. • Drivers should attend relevant training courses recognized by the Commissioner of Mines, including but not limited to: the laws and Regulations relating to the transport of explosives: and Security and safe handling during the transport of explosives. • Drivers should attend training courses provided by the explosives manufacturer or distributor, covering: <ul style="list-style-type: none"> - explosives identification; - explosion hazards; and - explosives sensitivity; - dangers which could be caused by the types of explosives; - packaging, labelling and characteristics of the types of explosives; - the use of fire extinguishers and firefighting procedures; and - emergency response procedures in case of accidents. 	Minimize explosive truck accident frequency and/ or severity.	Contractor for DHK	Vehicle driver for Transport route / Throughout operation of the Project	O	-

Implementation Schedule of Recommended Mitigation Measures

EIA Ref	EM&A Ref	Recommended Mitigation Measures	Objectives of the Recommended Measures & Main Concerns to address	Implementation Agent	Location/ Duration of the measure	Implementation Stage (O, D, CoP*)?	Relevant Legislation & Guidelines
S8.9.3		<ul style="list-style-type: none"> The Driver will also be responsible for various matters as listed in the EIA, including having a full set of Material Safety Data Sheets (MSDS) for each individual explosive aboard the vehicle and for the particular journey, etc. The MSDS and Removal Permit (where applicable) shall be produced to any officer of the Minds Division of CEDD upon request. 	Minimize explosive truck accident frequency and/ or severity.	Contractor for DHK	Vehicle driver for Transport route/ Throughout operation of the Project	O	-
S8.9.3		<ul style="list-style-type: none"> Explosive Vehicle Attendants shall: <ul style="list-style-type: none"> - Be the assistant to the driver in normal working conditions and in case of any emergency - Be conversant with the emergency response procedures - Be competent to use the fire extinguishers and the vehicle emergency cut-off switches - At least one of the vehicle attendant(s) should be equipped with a mobile phone and the relevant MSDS and emergency response plan 	Reduce number of journeys required	Contractor for DHK	Vehicle driver attendants for Transport route/ Throughout operation of the Project	O	-
S8.9.3		<p>For explosive selection, the following should be considered:</p> <ul style="list-style-type: none"> Cartridged Emulsions with perchlorate formulation should be avoided Cartridged Emulsions with high water content should be preferred. 	To meet the ALARP requirement.	Contractor for DHK	For TLEM site and Transport route / Throughout operation of the Project	O	-

* O = Operation; D = Decommissioning of the TLEM; CoP = Completion of Project

Appendix E

LETTER TO MINES DIVISION TO RETURN LICENSE AND STOCK BOOK

Your Ref.:

Our Ref.: LTH/CEDD/L/13049/Tkh

Date: 17th August 2017

Chief Geotechnical Engineer/Mines
Mines Division,
Geotechnical Engineering Office
Civil Engineering and Development Department
25/F, 410 Kwun Tong Road
Kowloon, Hong Kong

Attn: Mr. Wing-Hung Lee (Explosive Officer B)

Dear Sirs,

Contract No. CV/2012/08

Liantang / Heung Yuen Wai Boundary Control Point

Site Formation and Infrastructure Works – Contract 2

Return Tai Shu Ha Magazine (Purple 131) Licence and Stock Book (Blasting Explosives Register)

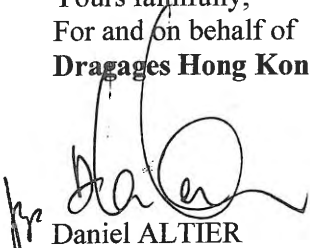
Due to our South Tunnel blasting work finished on 15th August 2017, the Tai Shu Ha Magazine (Purple 131) will close after site inspection on 17th August 2017.

We will return the following documents as below:

- 2 Stock Books (Blasting Explosives Register)
- 2 Licences (A002180 and A002181)

Should you have any inquiry, please do not hesitate to contact Mr. Tse at 9807 5832.

Yours faithfully,
For and on behalf of
Dragages Hong Kong Limited


Daniel ALTIER
Project Director

DAL/A/P/VAY/TKH

Encl.

c.c.: AECOM - Mr Francis Leong

Dragages Hong Kong Limited

Site Office : Junction of Sha Tau Kok Road and Wo Keng Shan Road, Fanling

Mailing Address : P.O. Box No. 541 Fanling Post Office, Hong Kong

Head Office : 3/F, Island Place Tower, 510 King's Road, North Point, Hong Kong

Tel 電話 : +852 2171 3000 Fax 傳真 : +852 2171 3299

香港寶嘉建築有限公司

工地辦事處：粉嶺沙頭角公路及禾徑山路交界

郵寄地址：粉嶺郵政局郵箱541號

總寫字樓：香港北角英皇道510號港運大廈3樓

www.dragageshk.com

By Hand

Confidential:	Yes	No
BKLTW (CV/2012/08)		
	ACT	INFO
PD-BAL		X
EPD		X
GCM		
TBM		
Tredi		
MV & S		X
Building		
Survey		
Plant		
Procurement		
TM		
Design		
Method		
Planning		
Geotechnical		
COM		
QSE		

Endorsed by the AECOM


Kelvin Ma
Blasting Competent Supervisor

Appendix F

LETTER FROM EPD TO APPROVE AND PROPOSAL TO CHANGE THE SPECIES FOR REINSTATEMENT PLANT

本署編號
OUR REF: EP 2/GKI/64 Pt.4
來函編號
YOUR REF: LTW/EPD/L/18691/JTa
電話
TEL. NO.: 2835 1145
圖文傳真
FAX NO: 2591 0558
電子郵件
E-MAIL:
網址
HOMEPAGE: <http://www.epd.gov.hk>

Environmental Protection Department
Branch Office
28th Floor, Southorn Centre,
130 Hennessy Road,
Wan Chai, Hong Kong.



環境保護署分處
香港灣仔
軒尼詩道
一百三十號
修頓中心廿八樓



25 June 2019

By Fax (2171 3299)

Dragages Hong Kong Limited
Site Office,
Junction of Sha Tau Kok Road and Wo Keng Sam Road, Fanling
P.P. Box No. 541 Fanling Post Office,
Hong Kong
(Attn: Mr. Alan KAM)

ERKS No.	
File No.	

Dear Mr. KAM,

Environmental Impact Assessment Ordinance, Cap. 499

**Operation of the Existing Tai Lam Explosives Magazine at Tai Shu Ha, Yuen Long for Liantang / Heung Yuen Wai Boundary Control Point Project
(Environmental Permit No. EP-502/2015/A)
(Environmental Permit (EP) Condition 2.5)**

Alternative Proposal for Reinstatement Planting at Tai Shu Ha Explosive Magazine

I refer to your letter dated 16.5.2019, which was received by this Office dated 21.5.2019, seeking our views regarding the captioned, with certification and verification from the ET Leader and the IEC, proposing, *C. canphora* (樟樹) to substitute *C. parthenoxylon* (黃樟) for reinstatement planting at Tai Shu Ha Explosive Magazine required as per Condition 2.5 of the captioned EP.

Section 3.4.9 of the concerned Tree Planting and Landscape Plan (TPLP) indicates that the list of recommended understory vegetation species for mitigatory planting as shown in Table 3.5 of the TPLP are not exhaustive or exclusive, and landscape designers responsible for the detailed design shall be permitted to propose suitable alternative species that meet the functional requirements of the landscape design.

Having consulted with AFCD and PlanD, provided that the same number of trees will be planted in the Tai Shu Ha Magazine site, we have no comment on your proposal as both *C. canphora* (樟樹) and *C. parthenoxylon* (黃樟) serve similar functional requirements. This minor change in proposed tree species in the approved TPLP can be accommodated in the EM&A mechanism. The proposal should be covered in the monthly EM&A report of the captioned Project.

(Chris C.C. WONG)
Assistant Environmental Protection Officer
for Director of Environmental Protection

c.c.

CEDD (Attn: Mr. PY LU)
 AFCD (Attn: Ms. YN CHAN)
 PlanD (Attn: Mr. Macro YIP)
 RDO/HyD (Attn: Mr. XIE Ting)
 MTRCL (Attn: Mr. Raymond WONG)

fax: 3547 1659
 fax: 2377 4427
 fax: 2116 0752
 fax: 2761 1508
 fax: 2993 7577

Internal

S(SA)6, S(SA)3, S(RN)2

SE/1	E/8	SE/4		
lv	RB			

Our Ref.: LTH/EPD/L/18691/JTa

Date: 16 May 2019

Environmental Assessment Division
Strategic Assessment Group
Environmental Protection Department
27/F., Southorn Centre
130 Hennessy Road
Wan Chai, Hong Kong

Attn: Mr. WONG Chi Chung, Chris

Dear Mr. WONG

Contract No. CV/2012/08
Liantang / Heung Yuen Wai Boundary Control Point
Site Formation and Infrastructure Works – Contract 2
Alternative Proposal for Reinstatement Planting at Tai Shu Ha Explosive Magazine

We, Dragages Hong Kong Ltd, is the holder of the Environmental Permit (No.: EP-502/2015/A) for Operation of Tai Shu Ha Explosive Magazine in Yuen Long. Pursuant to condition 2.5 of the EP, reinstatement planting is required after the decommission of the Magazine.

The reinstatement planting was commenced in April 2018. According to the approved Tree Planting and Landscaping Plan for XRL-TLP10: Works in Yuen Long District (Tai Shu Ha) (Rev 1) enclosed in Annex 3B of the EIA report (Register No.: AEIAR-193/2015), 11 tree species (Total 454 trees) are required to be planted in the Magazine.

However, one particular trees species (Total 41nos), namely *C. parthenoxylon* (黃樟) was found not available in the market, notwithstanding our landscaping contractor has made every endeavor to source this native species from various nurseries both in Mainland China and Hong Kong in the past 12 months. Consequently, the Independent Tree Specialist (ITS) appointed by the CEDD Liantang Contract, proposed another native species, *C. camphora* (樟樹) substituting for *C. parthenoxylon* (黃樟).

The subject was discussed between your goodself and the IEC (Mr. Adi Lee) in early February 2019. In this connection, we would like to submit herewith an alternative planting proposal endorsed by the ETL and IEC for your consideration and acceptance.

At present, all landscaping works in the Magazine has been completed except for the planting of the remaining 41nos. of *C. camphora* (樟樹), provided that our proposal is accepted. We wish the reinstatement planting works can be completed in May 2019 and followed by the undertaking of the maintenance period as requested by the CEDD. In this regard, your early response on your view with respect to the captioned proposal is highly appreciated.

Should you have any query, please do not hesitate to contact the Project IEC (Mr. Adi LEE) at 2618 2831 or our QSE Manager (Mr. Y.T SO) at 9307 8728.

Thank you for your time considering our proposal.

Remarks:		Dragages Hong Kong Limited
Confidential: Yes		Site Office : Junction of Sha Tau Kok Road and Wo Keng Shan Road, Fanling
HKLTH (CV/2012/08)		Mailing Address : P.O. Box No. 541 Fanling Post Office, Hong Kong
PD	ACT	Head Office : 3/F Island Place Tower, 510 King's Road, North Point, Hong Kong
DPD	TELEPHONE	Telephone : +852 2171 3000 Fax 傳真 : +852 2171 3299
GC		香港寶嘉建築有限公司
Work		工程地址 : 粉嶺沙頭角公路及禾徑山路交界
Plant		郵寄地址 : 粉嶺郵政局郵箱541號
Procurement		樓宇字號 : 香港北角英皇道510號港運大廈3樓
EM		www.dragageshk.com
Design		
Method		
Planning		
Geotechnical		
AGF		
COM		
QSE		

By Hand

Our Ref.: LTH/EPD/L/18691/JTa

Date: 16 May 2019

Yours faithfully,
For and on behalf of
Dragages Hong Kong Limited



Alan KAM
Project Director

AKA/VAY/YTS/JTa

Encl.

cc: AUES - Mr TW TAM (ETL)
ANEWR - Mr. Adi LEE (IEC)
Muni - Mr. Mike LEUNG (ITS)



Liantang/ Heung Yuen Wai Boundary Control Point
Site Formation and Infrastructure Works – Contract 2
Contract No. CV/2012/08

Dragages Hong Kong Ltd.

**Liantang/ Heung Yuen Wai Boundary Control Point
Site Formation and Infrastructure Works – Contract 2
Contract No. CV/2012/08**

**Alternative Proposal for Reinstatement Planting at Tai Shu Ha
Explosive Magazine**

**Pursuant to Condition 2.5 of the Environmental Permit
No.: EP-502/2015/A**

(Rev.2)

Prepared By:  Joshua TAM Environmental Officer Date: 16 May 2019	Reviewed By:  Y.T. SO QSE Manager Date: 16 May 2019	Endorsed By:  Alan KAM Project Director Date: 16/5/2019
---	--	--

Contents

1. Synopsis
2. Alternative proposal by Independent Tree Specialist (ITS)
3. Endorsement for the alternative proposal by ETL and IEC
4. Existing status for reinstatement planting
5. Final inspection

Annex

- Annex A Landscape plan
- Annex B ITS's alternative proposal for substitution of tree species *C. pathenoxylon* with *C. camphora*
- Annex C Correspondence for sourcing the tree species *C. camphora*
- Annex D Endorsement from the ETL and IEC
- Annex E Photographic records for the existing status of reinstatement planting at TSH explosive magazine

1. Synopsis

Pursuant to Condition 2.5 of the Environmental Permit (No.: EP-502/2015/A), DHK is obliged to implement reinstatement planting upon completion of operation of the magazine as per the Approved Tree Planting and Landscaping Plan for XRL-TP-10: Works in Yuen Long District (Tai Shu Ha) (Revision 1). The relevant information extracted from the Approved Tree Planting and Landscape Plan is enclosed in Annex A for easy reference.

The reinstatement planting was commenced in April 2018. In the meantime, the landscaping contractor (Muni Arborist Ltd.) has made every endeavor to source the tree species delineated in the Landscape Plan. However, one particular species, *C. Parthenoxylon* (黃樟) is rarely selected for cultivation both in Mainland China and Hong Kong. The species is not available in the market and thus causing the reinstatement planting works cannot be completed on schedule.

In this regard, the Independent Tree Specialist (ITS) appointed by the CEDD Liantang Project, Mr. Mike Leung hereby advises an alternative planting proposal for EPD's consideration.

2. Alternative proposal

With respect to unavailable source of the tree species *C. Parthenoxylon* (黃樟), the ITS proposes to substitute it with another native species *C. camphora* (樟樹). Practically, both native species are evergreen broadleaved and have similar flowering and fruiting time. The physical characteristic and ecological value of the two species are similar. An explanatory proposal from the ITS and the photo of the proposed species *C. camphora* (樟樹) is enclosed in Annex B for reference.

On the other hand, all correspondences in sourcing the tree species *C. Parthenoxylon* (黃樟) from other landscaping contractor and nursery site are enclosed in Annex C for reference.

3. Endorsement for the alternative proposal

DHK solicited professional advices from the ETL (Mr. TW Tam) and the IEC (Mr. Adi Lee) with respect to the alternative proposal. Both ETL and IEC opine that the alternative proposal is feasible for implementation. Respective endorsement letters from the ETL and IEC are enclosed in Annex D for reference.

4. Existing status for reinstatement planting

The reinstatement planting for the magazine site has been implementing in accordance with the CEDD General Specification for landscaping works. All evidences such as (1) Test reports for soil mix and soil conditioner, (2) Specification of mulch material, (3) Photographic records for tree and shrub, are well documented.

At present, all landscaping works have been completed except for the planting of the required species *C. Parthenoxylon* (黃樟). Photographic records for the existing magazine site are enclosed in Annex E for information.

5. Final inspection

Upon the EPD's approval for the alternative proposal, planting for *C. camphora* (樟樹) shall be commenced and followed by a final joint inspection.

The final joint inspection will be carried out by the ETL, IEC, ITS and DHK. In the case that the ETL and IEC verified the reinstatement planting works are completed in compliance with the approved Landscape Plan, DHK will have fulfilled the obligation for implementing the reinstatement planting (Condition 2.5 of the Environmental Permit). Subsequently, DHK will surrender the Environmental Permit for this Project in due course.

[End of the Proposal]

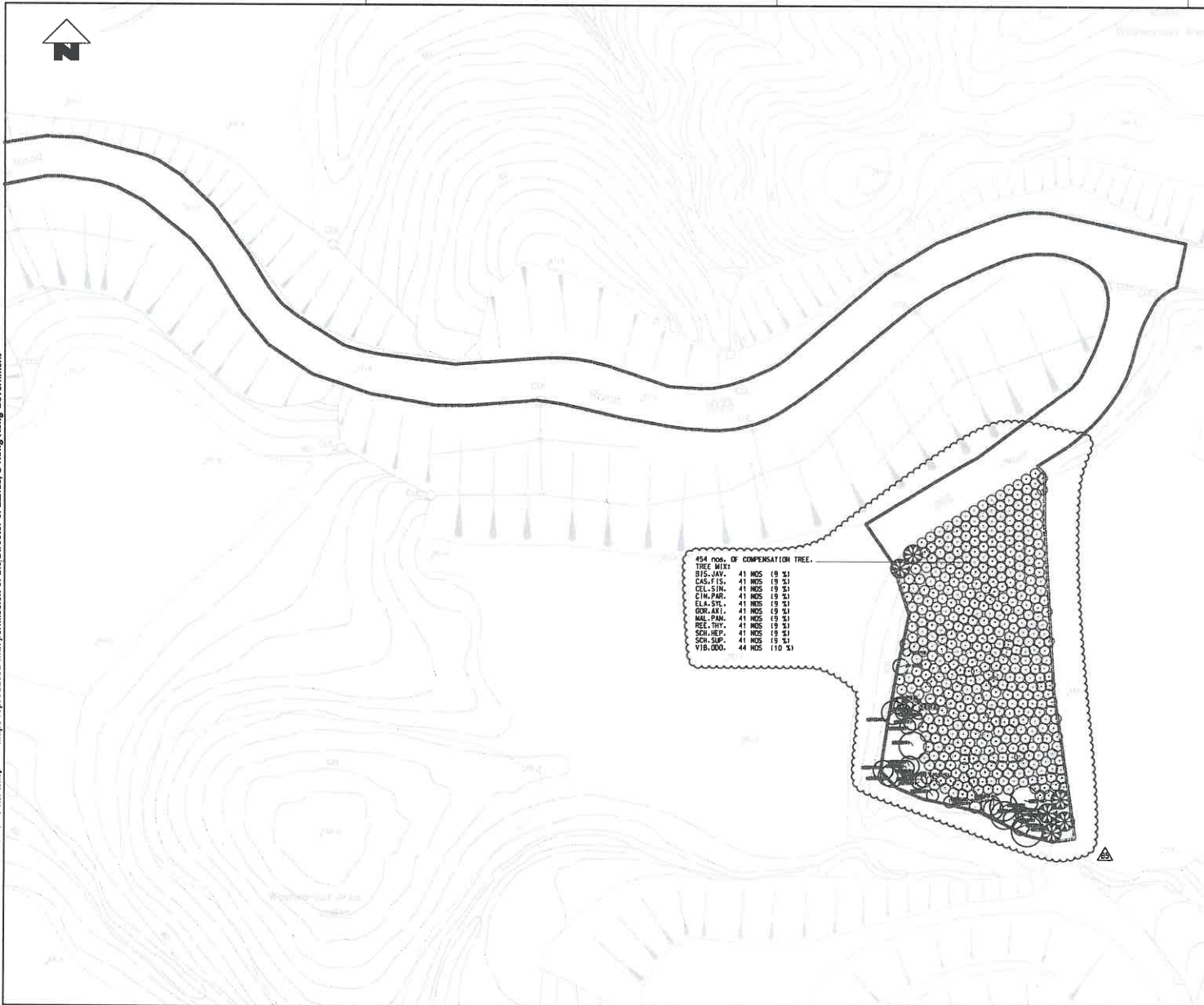
Annex A

Landscape plan

(Extracted from Appendix III of the Approved Tree Planting and Landscape Plan for XRL-TLP10)

Maps reproduced with permission of the Director of Lands, © Hong Kong Government

FILENAME: C:\p\06\1\PHV\A58_84385.DGN DATE: 2009/12/02 10:58:43 AM USER: JIN, A.T. A58_84385.DGN

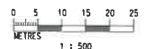


454 nos. OF COMPENSATION TREE.

TREE MIX	NO.	SIZE
BIS. JAV.	41 NOS	(8' X)
CAS. FIS.	41 NOS	(8' X)
CEL. SIN.	41 NOS	(8' X)
CIN. PAR.	41 NOS	(8' X)
ELA. SYL.	41 NOS	(8' X)
GOR. AXI.	41 NOS	(8' X)
MAL. PAN.	41 NOS	(8' X)
REC. THY.	41 NOS	(8' X)
SCH. HEP.	41 NOS	(8' X)
SCH. SUP.	41 NOS	(8' X)
VIB. OOO.	44 NOS	(10' X)

LEGEND:

Type	Botanical Name	Chinese Name	Standard	Spacing	Size (HxSPxDA)	Quantity
類	名稱	名稱	類	間距	規格	數
TREE						
BIS. JAV.	BISCHOFIA JAVANICA	黃槿木	STANDARD	2.5M	3.5Mx2.5Mx0.05M	41
CAS. FIS.	CASTANOPSIS FISSA	銀耳銀葉	STANDARD	2.5M	4Mx2.5Mx0.05M	41
CEL. SIN.	CELIS SINENSIS	朴樹	STANDARD	2.5M	3.5Mx2.5Mx0.05M	41
CIN. PAR.	CINNAMOMUM PARTHENDYCTION	肉桂	STANDARD	2.5M	3.5Mx2.5Mx0.05M	41
ELA. SYL.	ELAEODENDRUM STYMISTRIS	山桂葉	STANDARD	2.5M	3.5Mx2.5Mx0.05M	41
GOR. AXI.	GORDONIA AXILLARIS	大黃荊	STANDARD	2.5M	3.5Mx2.5Mx0.05M	41
MAL. PAN.	MALLOTUS PANICULATUS	牛柳	STANDARD	2.5M	3.5Mx2.5Mx0.05M	41
REC. THY.	REEVESIA THYRSODEA	地黃樹	STANDARD	2.5M	3.5Mx2.5Mx0.05M	41
SCH. HEP.	SCHETFLERA HEPHAPHYLLA	鴨腳木	STANDARD	2.5M	4Mx2.5Mx0.05M	41
SCH. SUP.	SCHIMM SUPERSA	木荷	STANDARD	2.5M	3.5Mx2.5Mx0.05M	41
VIB. OOO.	VIBURNUM ODRATESMUM	珊瑚樹	STANDARD	2.5M	3.5Mx2.5Mx0.05M	44



REV	DESCRIPTION	BY	DATE	APPROVED	REV	DESCRIPTION	BY	DATE	APPROVED
B5	REVISION TO PLANTING SCHEDULE	AC	JUL10	TM	DESIGNED	SH			
B4	REVISION TO PLANTING SCHEDULE	AC	JUN10	TM	CHECKED	KN			
B3	REVISION TO PLANTING SCHEDULE	AC	MAY10	TM	APPROVED	TM			
B2	REVISION TO PLANTING SCHEDULE	AC	MAR10	TM	DATE	DEC/2009			
B1	REVISION TO PLANTING SCHEDULE	AC	FEB10	TM					
A	WORKING DRAWING ISSUE	AC	MAR10	TM					

MTR
EXPRESS RAIL LINK

ORIGINATOR
ATKINS
Supported by
Anup, TFP, Farrells, DLS
Knight Frank, BMT, Kenneth Ng

CADD REF.
822_W_PHV_ATK_A58_84385.DGN

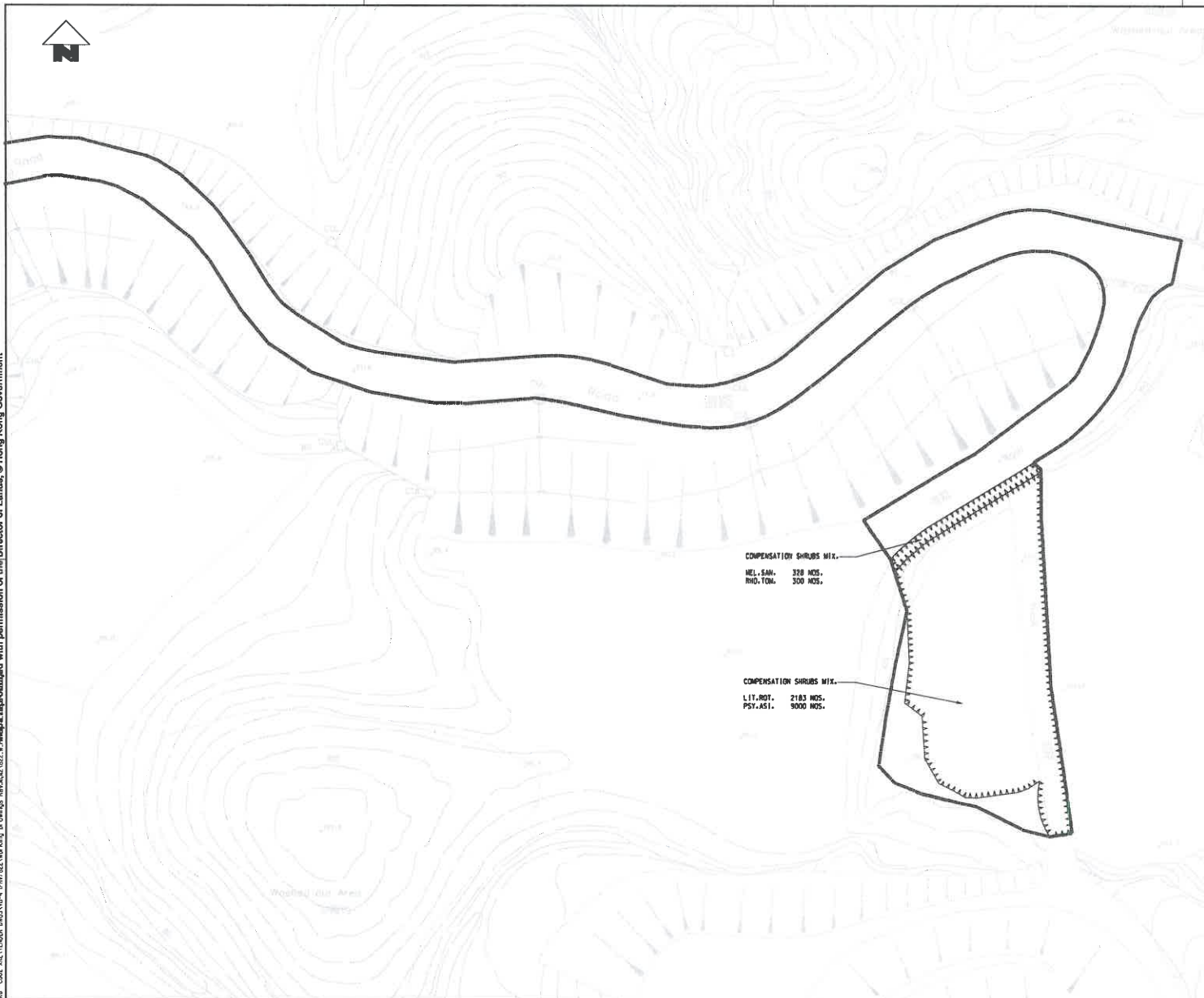
TITLE
CONTRACT 822
TSE UK TSUEN TO SHEK YAM TUNNELS
TAI SHU HA (YUEN LONG) MAGAZINE SITE
LANDSCAPE PLAN

SCALE
1 : 500 (A1)

DRAWING NO.
822/W/PHV/ATK/A58/843

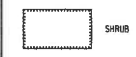
REV.
B5

MTR Logo: MTR Corporation Limited
 Project: TSE UK TSUEN TO SHEK YAM TUNNELS
 Drawing: SHRUB PLANTING PLAN
 Date: 2010/03/22
 Scale: 1:500
 Author: [Name]
 Checker: [Name]
 Approver: [Name]

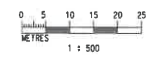


LEGEND:

Type 種類	Botanical Name 學名	Chinese Name 中文名稱	Spacing 株距	Standard 規格	Quantity 數量
SHRUB 樹叢	LITSEA ROTUNDIFOLIA	綠萼木	500 mm	300H x 250S	2183
MEL.SAN.	MELASTOMA SANGUINELUM	木朱紅	500 mm	400H x 300S	328
PSY.ASI.	PSYCHOTRIA ASIATICA	九里香	500 mm	500H x 400S	9000
RHO.TOM.	RHOCHORTUS TOMENTOSA	桃金娘	500 mm	300H x 250S	300



SHRUB



REV	DESCRIPTION	BY	DATE	APPROVED	REV	DESCRIPTION	BY	DATE	APPROVED
A3	WORKING DRAWING ISSUE	AC	JUL10	TM	DATE	MAR/2010			
A2	WORKING DRAWING ISSUE	AC	JUN10	TM					
A1	WORKING DRAWING ISSUE	AC	MAR10	TM					

MTR

EXPRESS RAIL LINK

ORIGINATOR
ATKINS

Supported by
Arup, TFP, Farrelle, DLS
Kenneth Ng

CADD REF.
822_W_PHV_ATK_A58_84TA3.DGN

TITLE	CONTRACT 822 TSE UK TSUEN TO SHEK YAM TUNNELS TAI SHU HA (YUEN LONG) MAGAZINE SITE SHRUB PLANTING PLAN
SCALE	1 : 500 (A1)
DRAWING NO.	822/W/PHV/ATK/A58/847
REV.	A3

Tree Planting Schedule at Tai Shu Ha Explosive Magazine

	Type	Botanical Name	Chinese Name	Standard	Spacing	Size (H * SPR * DIA)	Quantity
Trees 樹類	BIS.JAV.	Bischofia Javanica	重陽木	Standard	2.5m	3.5m * 2.5m * 0.06m	41
Trees 樹類	CAS.FIS.	Castanopsis Fissa	裂斗錐栗	Standard	2.5m	4m * 2.5m * 0.06m	41
Trees 樹類	CEL.SIN.	Celtis Sinensis	朴樹	Standard	2.5m	3.5m * 2m * 0.06m	41
Trees 樹類	CIN.PAR.	Cinnamomum Parthenoxylon	黃樟	Standard	2.5m	3.5m * 2.5m * 0.06m	41
Trees 樹類	ELA.SYL.	Elaeocarpus Sylvestris	山杜英	Standard	2.5m	3.5m * 2.5m * 0.06m	41
Trees 樹類	GOR.AXI.	Gordonia Axillaris	大頭茶	Standard	2.5m	3.5m * 2.5m * 0.06m	41
Trees 樹類	MAL.PAN.	Mallotus Paniculatus	白揪	Standard	2.5m	3.5m * 2.5m * 0.06m	41
Trees 樹類	REE.THY.	Reevesia Thyrsoidea	梭羅樹	Standard	2.5m	3.5m * 2.5m * 0.06m	41
Trees 樹類	SCH.HEP.	Schefflera Heptaphylla	鴨腳木	Standard	2.5m	4m * 2m * 0.06m	41
Trees 樹類	SCH.SUP.	Schima Superba	木荷	Standard	2.5m	3.5m * 2.5m * 0.06m	41
Trees 樹類	VIB.ODO.	Viburnum Oboratissimum	珊瑚樹	Standard	2.5m	3.5m * 2.5m * 0.06m	44
Shrub 灌木類	LIT.ROT.	Litsea Rotundifolia	豺皮樟	-	500mm	300H * 250S	2183
Shrub 灌木類	MEL.SAN.	Melastoma Sanguineum	毛木念	-	500mm	400H * 300S	328
Shrub 灌木類	PSY.ASI.	Psychotria Asiatica	九節	-	500mm	500H * 400S	9000
Shrub 灌木類	RHO.TOM.	Rhodomyrtus Tomentosa	桃金娘	-	500mm	300H * 250S	300

Annex B

- Proposal from the ITS for substitution of tree species *C. pathenoxylon* with *C. camphora*
- Photo of the proposed species *C. camphora*



Our ref: MA/C/2019/0002/DHKL02A

Dragages Hong Kong Limited
3/F, 510 King's Road,
Island Place Tower,
North Point

18 February 2019
By email only

Attn: Mr. Simon Wong

Dear Mr.Simon,

Contract No. CV/2012/08
Liantang/Heung Yuen Wai Boundary Control Point
Site Formation and Infrastructure Works – Contract 2
Reinstatement Planting at Tai Shu Ha Explosive Magazine – Pursuant to Condition
2.5 of the Environmental Permit (No. EP-502/2015/A)

Regarding the captioned project, we have strived to source the tree species *C. pathenoxylon* in the past 6 months from various nurseries in China but unfortunately there was no stock available. According to the information we gathered from the nurseries, this species is rarely planted in China and HKSAR and therefore not cultivated.

We propose to substitute the *C. pathenoxylon* with another native species *C. camphora*, which belongs to the same genus. *C. camphora* has a long history of being planted in Hong Kong as Fung Shui Tree and in countryside. According to the “Flora of Hong Kong”, both species are native and common in Hong Kong. Both of them are evergreen broadleaved species. They have similar flowering and fruiting time. Flowering and fruiting time *C. pathenoxylon* is Mar to May and Apr to Oct respectively while that of *C. camphora* is Apr to May and Aug to Nov respectively. Both species tolerate shade environment as understory tree when young while *C. camphora* is known to be more hardy in full sun exposure. The ecological value of the two species is similar and their performance in the Tai Shu Ha site is believe to be equivalent.

Z:\MUNIDHKL\DHKL02A\C - Correspondence\C1_Client\Letter\Outgoing\MA_C_2019_0002_DHKL02A.docx

Muni Arborist Limited 都市樹藝有限公司

郵遞地址: 新界大埔泰亨499號

Mailing Address: No. 499 Tai Hang, Tai Po, New Territories

辦公室/苗圃地址: 新界大埔泰亨中心圍429號地段

Office / Nursery Address: Lot 429 SB RP in DD7, Tai Hang, Tai Po, New Territories

電話 Tel: 3583 3111 傳真 Fax: 3583 1411 info@muniarborist.com www.muniarborist.com





Should you have any queries regarding the above, please feel free to the undersigned at 3583-3111.

Yours sincerely,

Mike Leung
Director

Z:\MUNI\DHKL\DHKL02A\C - Correspondence\C1_Client\Letter\Outgoing\MA_C_2019_0002_DHKL02A.docx

Muni Arborist Limited 都市樹藝有限公司

郵遞地址：新界大埔泰亨499號

Mailing Address : No. 499 Tai Hang, Tai Po, New Territories

辦公室 / 苗圃地址：新界大埔泰亨中心圍429號地段

Office / Nursery Address: Lot 429 SB RP in DD7, Tai Hang, Tai Po, New Territories

電話 Tel : 3583 3111 傳真 Fax : 3583 1411 info@muniarborist.com www.muniarborist.com





Photo of *C. camphora* (樟樹)



Photo of *C. camphora* (樟樹)

Annex C

Correspondence for sourcing the tree species *C. camphora*



惠山園景有限公司
Wai Shan Gardening Co., Ltd.

Address: Rm17-18, 10/F., Landmark North, No. 39 Lung Sum Avenue, Sheung Shui, N.T.H.K.
Telephone: 3488 0612 Fax: 3489 0223 Email: info@waishangarden.com

14 February 2019

Muni Arborist Limited
Lot 429SB RP in DD7,
Tai Hang, Tai Po
New Territories,

By Email

Attn. : Mr. Mike Leung

Dear Mr. Leung,

Re: Supply of *Cinnamomum parthenoxylon*

Thank you for your enquiry regarding the quotation of supplying standard size *Cinnamomum parthenoxylon* on 2nd July 2018. Unfortunately, we have continued asking all our suppliers in Hong Kong and China in the past 6 months and cannot find the stock you are looking for.

We look forward to work with you in future.

Yours sincerely,

For and on Behalf of
Wai Shan Gardening Co., Ltd.




CHAN Ming Tak
Director

MTC/sl



YY Garden Company

Date: 3th January 2019
To: Muni Arborist Limited
Attn: Mr. Mike Leung

Re: Supply of *Cinnamomum parthenoxylon*

Thank you for your enquiry for sourcing the *C. parthenoxylon* standard size trees from our company. Over the past few months, we have sources the nurseries in China but unfortunately can not find the necessary stock you are looking for. There is no supply of such species in China as this species is not a landscape species currently use in China and Hong Kong. We recommend you to change the species and ask our company to quote again in future.

Yours sincerely.



Mr. K. F. Lee

日期: 2018 年 12 月 3 日

致: 都市樹藝有限公司
收信人: 梁永先生

關於: 提供黃樟樹事宜

感謝你的報價邀請, 我可在過去半年來問了所有我們有聯絡的中國內地苗場, 但仍未找到 貴司需要的黃樟樹, 內地苗場回覆此品種在香港及國內少有合約要求種植, 故此苗場都不會培植這個品種.

此致



張先生

Postal Address: P.O.BOX306,FANLING,N.T.

Main Garden: D.D.7LOT 239,TAI HANG,TAI PO.N.T. Auxiliary Garden: D.D.7LOT 426,TAI HANG,TAI PO.N.T.

E-mil: kdh@biznetvigator.com

Tel: 2650 3851, 2528 6598 Fax : 2650 3852, 2650 3187

Annex D

Endorsement from the ETL and IEC for the alternative proposal



Dragages Hong Kong Limited
3/F, Island Place Tower
510 King's Road
North Point
Hong Kong

Your reference:

Our reference: HKDHL01/50/105762

Date: 15 May 2019

Attention: Mr Joshua Tam

BY EMAIL & POST
(email:
joshua.tam@dragageshk.com)

Dear Sirs

Contract No.: CV/2012/08
Liantang / Heung Yuen Wai Boundary Control Point
Site Formation and Infrastructure Works – Contract 2
Consultancy Agreement No. CV/2012/08-CA031 – Independent Environmental Checker Services
for Explosives Magazine at Tai Shu Ha
Alternative Proposal for Reinstatement Planting at Tai Shu Ha Explosive Magazine (Rev.2)

We refer to email of 14 May 2019 attaching an Alternative Proposal for Reinstatement Planting at Tai Shu Ha Explosive Magazine (Rev.2) for the captioned project.

Please be advised that we have no objection to the proposal and the implementation of the alternation proposal for reinstatement planting shall be subject to the EPD's agreement.

Please do not hesitate to contact the undersigned on 2618 2831 should you have any queries.

Yours faithfully
ANEWR CONSULTING LIMITED

Adi Lee
Independent Environmental Checker

LYMA/csym

cc AUES – Mr Ben Tam (email: bentam@fordbusiness.com)

ANewR Consulting Limited
Unit 517, 5/F, Tower A, Regent Centre
63 Wo Yi Hop Road, Kwai Chung, Hong Kong
Tel: (852) 2618 2831 Fax: (852) 3007 8648
Email: info@anewr.com
Web: www.anewr.com



Our Ref: TCS/00814/15/300/L0081

Dragages Hong Kong Limited
3/F, Island Place Tower,
510 King's Road,
North Point, Hong Kong

Attn: Mr. Joshua Tam

16 May 2019
By email and by Post

Dear Mr. Tam,

**Re: Operation of the Existing Tai Lam Explosives Magazine at Tai Shu Ha, Yuen Long for Liantang/Heung Yuen Wai Boundary Control Point Project
Alternative Proposal for Reinstatement Planting at Tai Shu Ha Explosive Magazine (Rev. 2)**

With reference to the Alternative Proposal for Reinstatement Planting at Tai Shu Ha Explosive Magazine (Rev. 2) submitted on 15 May 2019, please note that we have no objection to the proposal and implementation for reinstatement planting.

Should you have any queries or need further information, please do not hesitate to contact the undersigned at Tel: 2959-6059 or Fax: 2959-6079.

Yours sincerely,
For and on Behalf of
Action-United Environmental Services & Consulting (AUES)



T. W. Tam
Environmental Team Leader
TW/bt

Annex E

Photographic records for the existing reinstatement planting at
TSH explosive magazine



General view of the reinstatement planting



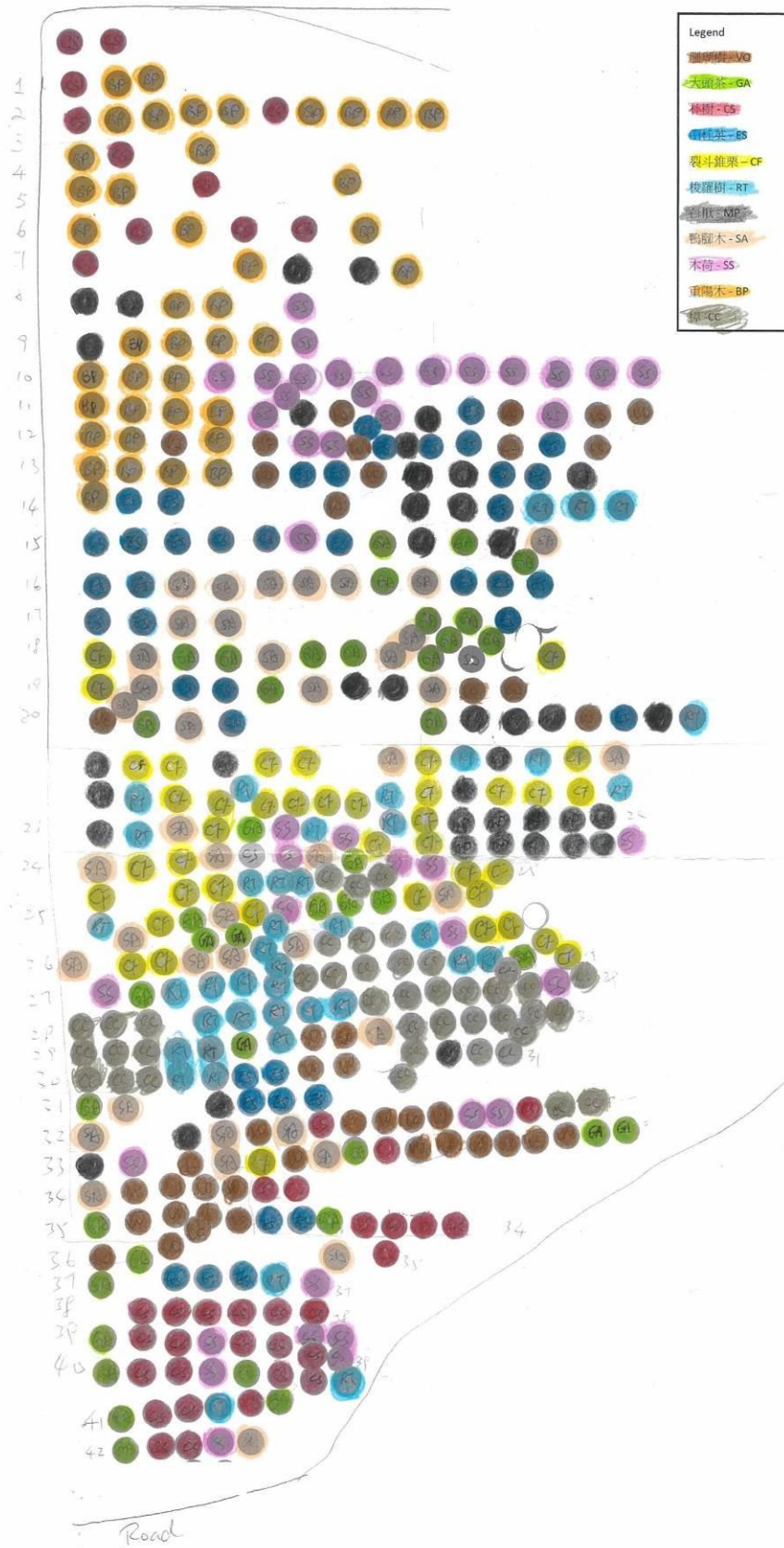
Each new tree is planted with spacing (Minimum 2.5m)



Organic mulch is applied to improve the soil condition

Appendix G

LAYOUT PLAN FOR REINSTATEMENT PLANTING





REEVESIA THYRSOIDEA 梭羅樹



SCHIMA SUPERBA 木荷



CINNAMOMUM CAMPHORA 樟樹



MALLOTUS PANICULATUS 白楸



GORDONIA AXILLARIS 大頭茶



VIBURNUM ODORATISSIMUM 珊瑚樹



BISCHOFIA JAVANICA 重陽木



ELAEOCARPUS SYLVESTRIS 山杜英



CELTIS SINENSIS 朴樹



CASTANOPSIS FISSA 裂斗錐栗



SCHEFFLERA HEPTAPHYLLA 鴨腳木



MELASTOMA SANGUINEUM 毛梔
(SHRUB)



PSYCHOTRIA ASIATICA 九節
(SHRUB)



LITSEA ROTUNDIFOLIA 豺皮樟
(SHRUB)



RHODOMYRTUS TOMENTOSA
桃金娘 (SHRUB)

Appendix H

MONTHLY SUMMARY WASTE FLOW TABLE

(Not Use)