

The EIA Ordinance Register Office
Environmental Protection Department
27/F, Southorn Centre
130 Hennessy Road
Wan Chai
Hong Kong

Our ref: SCL-COR-LSRENVE-ENV-044577

Attn: Mr. TS So

11 December 2020

BY HAND

Dear Mr. So,

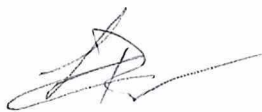
**Shatin to Central Link - Hung Hom to Admiralty Section [SCL (HUH-ADM)]
Environmental Permit No. EP-436/2012/F
EP Condition 2.26 – As-Built Drawings of Measures for Mitigating Visual and
Landscape Impact and Tree Planting (Works Contract 1122)**

Pursuant to Condition 2.26 of the captioned EP, we are pleased to deposit herewith **four** hard copies and **one** electronic copy of the as-built drawings of measures for mitigating visual and landscape impact and tree planting for Works Contract 1122.

This as-built submission has been certified by the ETL and verified by IEC that the Visual, Landscape and Tree Planting & Tree Protection Plan approved under Condition 2.14 of the captioned EP has been fully and properly implemented.

Should you have any queries, please feel free to contact our Ms. Viola Tong at 3127 6296.

Yours sincerely,



Lisa Poon
Lead Senior Environmental Engineer

Encl.

c.c. HyD/RDO - Mr. Anka Leung (w/ encl.)
MEINHARDT - Ms. Claudine Lee (IEC) (w/ encl.)

LP/VT/CLe/iy

MTR Corporation Limited

**Shatin to Central Link –
Hung Hom to Admiralty Section**

As-Built Drawings of Measures for Mitigating Visual
and Landscape Impact and Tree Planting -
Works Contract 1122

Verified by: _____ Claudine Lee 

Position: Independent Environmental Checker

Date: _____ 11 December 2020

MTR Corporation Limited

**Shatin to Central Link –
Hung Hom to Admiralty Section**

As-Built Drawings of Measures for Mitigating Visual
and Landscape Impact and Tree Planting -
Works Contract 1122

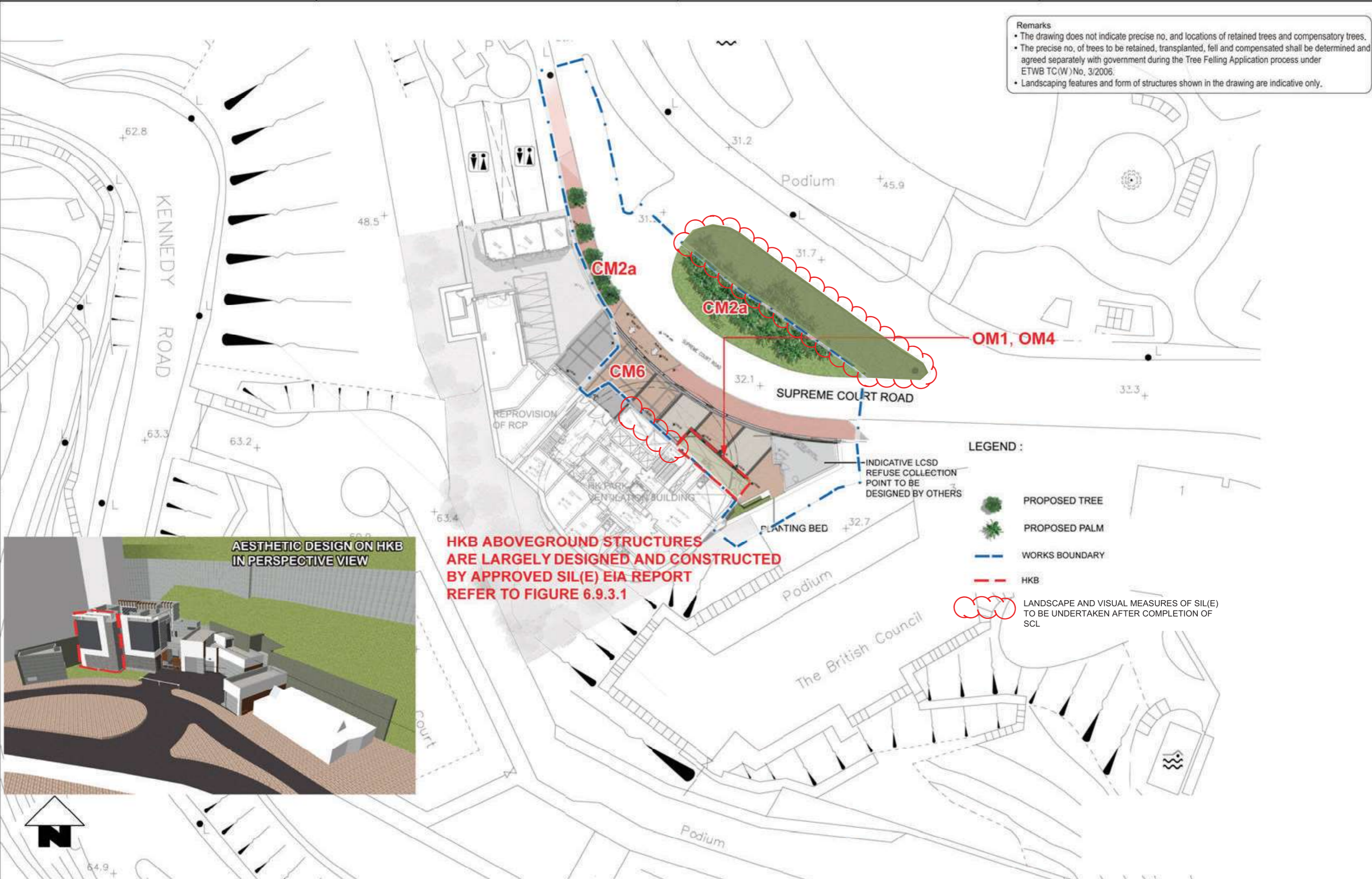
Certified by: Lisa Poon 

Position: Environmental Team Leader

Date: 11 December 2020

Remarks

- The drawing does not indicate precise no. and locations of retained trees and compensatory trees.
- The precise no. of trees to be retained, transplanted, fell and compensated shall be determined and agreed separately with government during the Tree Felling Application process under ETWB TC(W) No. 3/2006.
- Landscaping features and form of structures shown in the drawing are indicative only.

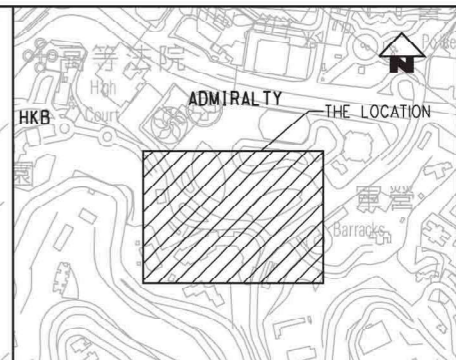
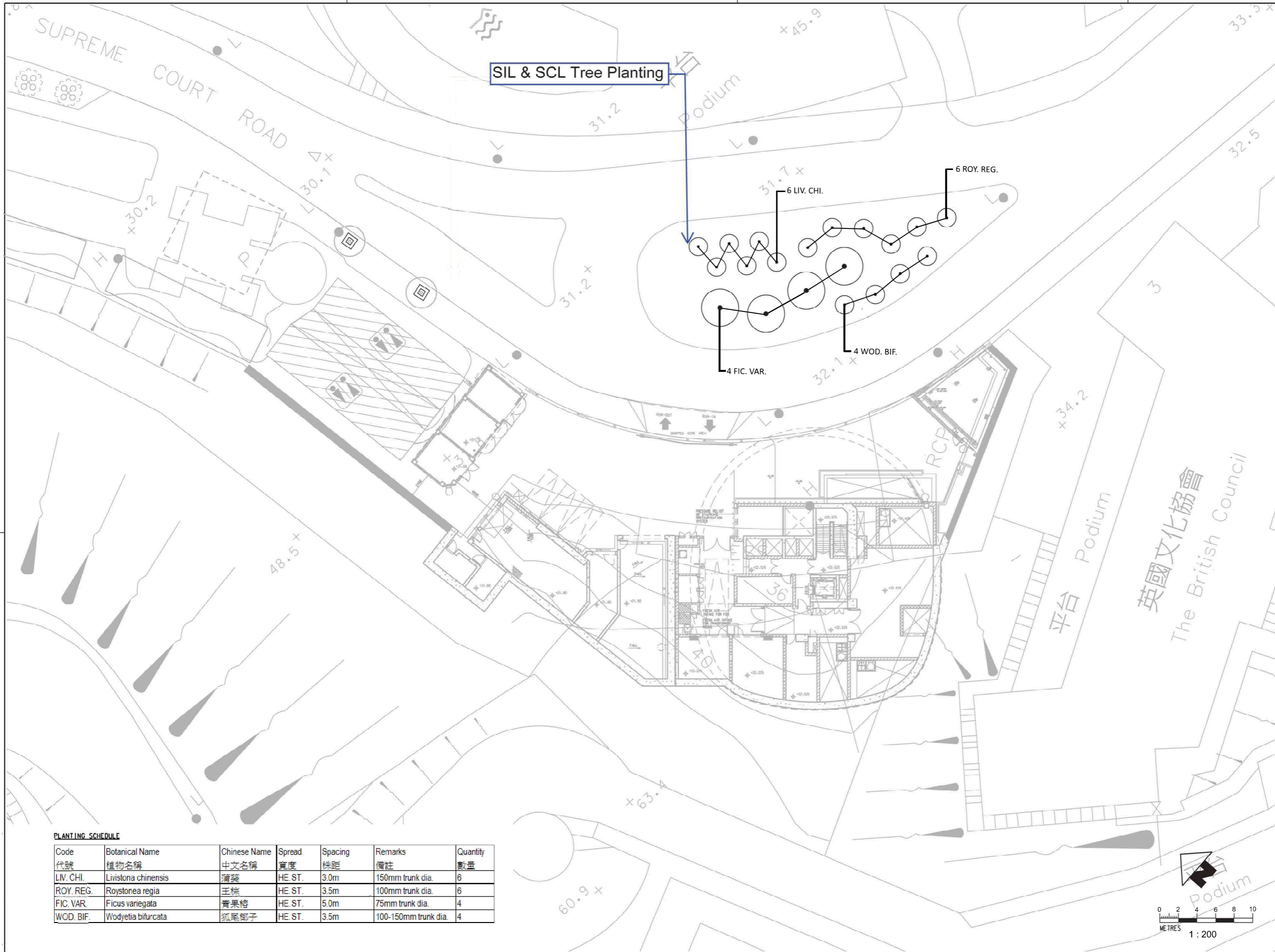


AESTHETIC DESIGN ON HKB IN PERSPECTIVE VIEW



HKB ABOVEGROUND STRUCTURES ARE LARGELY DESIGNED AND CONSTRUCTED BY APPROVED SIL(E) EIA REPORT REFER TO FIGURE 6.9.3.1



		CONTRACT 1122	
SHATIN TO CENTRAL LINK		ADMIRALTY SOUTH OVERRUN TUNNEL	
<small>ORIGINATOR</small>		<small>AS-BUILT DRAWING FOR VISUAL AND LANDSCAPE IMPACT AND TREE PLANTING - MASTER PLAN</small>	
<small>CADD REF.</small>		<small>SCALE</small> N. T. S.	<small>FIGURE NO.</small> NEX2213/Z/331/ENS/M54/074
		<small>REV.</small> C	

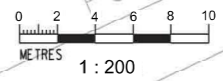



KEY PLAN
1 : 5000

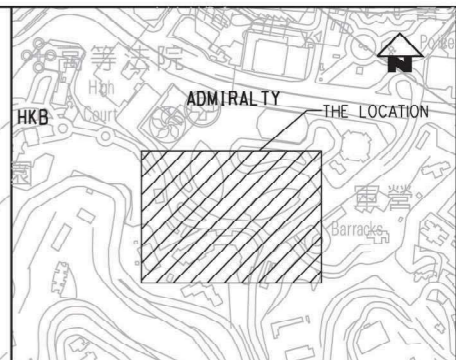
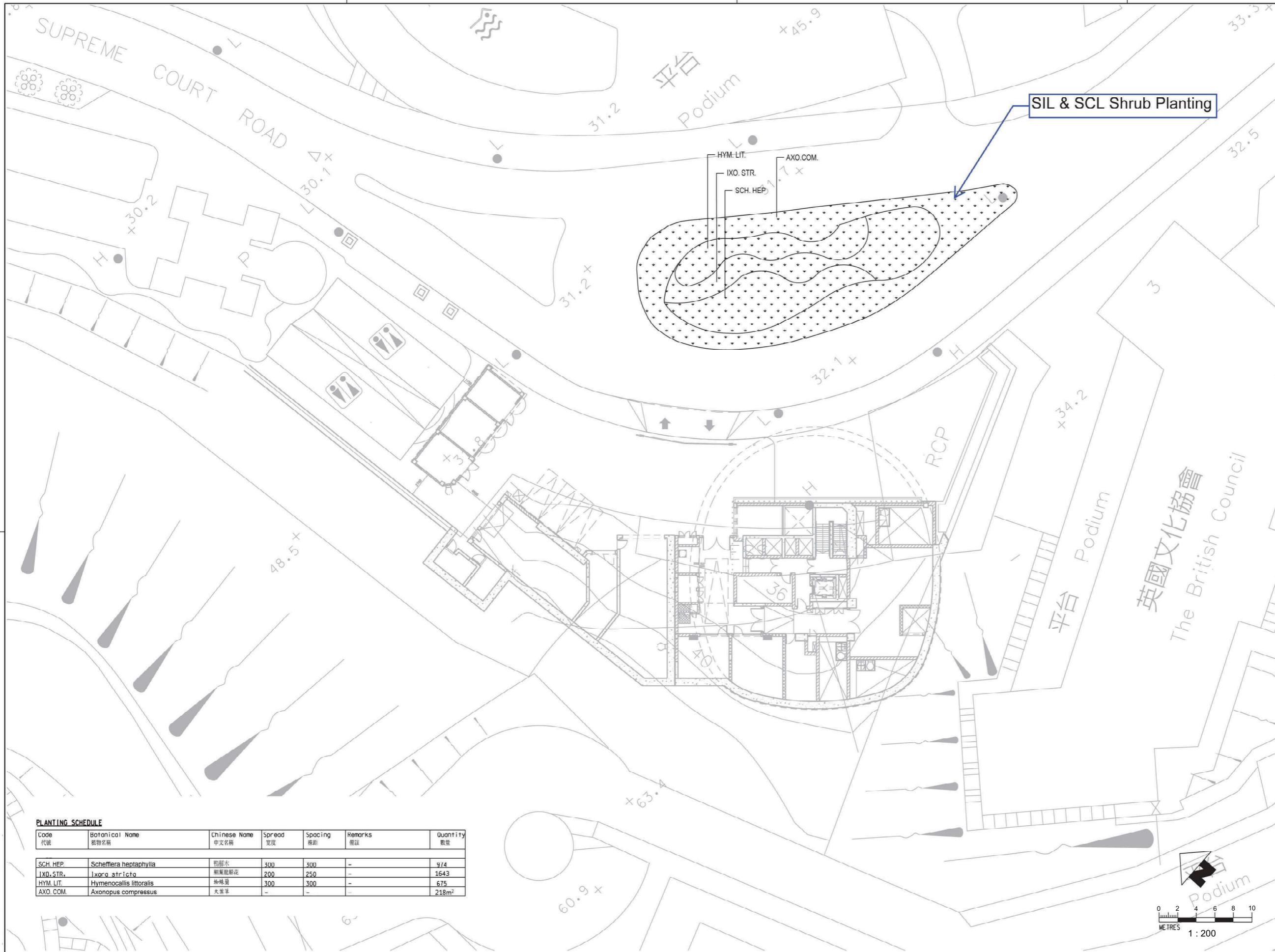
- LEGEND
-  EXISTING TREE TO BE RETAINED
 -  PROPOSED NEW TREE

PLANTING SCHEDULE

Code	Botanical Name	Chinese Name	Spread	Spacing	Remarks	Quantity
代號	植物名稱	中文名稱	寬度	株距	備註	數量
LIV. CHI.	Livistona chinensis	蒲葵	HE. ST.	3.0m	150mm trunk dia.	6
ROY. REG.	Roystonea regia	王棕	HE. ST.	3.5m	100mm trunk dia.	6
FIC. VAR.	Ficus variegata	青果榕	HE. ST.	5.0m	75mm trunk dia.	4
WOD. BIF.	Wodyetia bifurcata	狐尾椰子	HE. ST.	3.5m	100-150mm trunk dia.	4



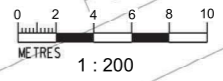
 SHATIN TO CENTRAL LINK	TITLE		CONTRACT 1122
	ORIGINATOR		ADMIRALTY SOUTH OVERRUN TUNNEL
	CADD REF.		AS-BUILT DRAWING FOR VISUAL AND LANDSCAPE IMPACT AND TREE PLANTING - PLANTING PLAN (TREE)
SCALE @ A1	DRAWING NO.	REV.	
1 : 200	902/Z/HKB/T73/A58/250	B	



KEY PLAN
1 : 5000

PLANTING SCHEDULE

Code 代號	Botanical Name	Chinese Name 中文名稱	Spread 寬度	Spacing 株距	Remarks 備註	Quantity 數量
SCH. HEP.	<i>Schefflera heptaphylla</i>	鴨腳木	500	500	-	974
IXO. STR.	<i>Ixora stricta</i>	刺葉銀絲花	200	250	-	1643
HYM. LIT.	<i>Hymenocallis littoralis</i>	絲絨蘭	300	300	-	675
AXO. COM.	<i>Axonopus compressus</i>	大葉草	-	-	-	218m ²



MTR

SHATIN TO CENTRAL LINK

ORIGINATOR

CADD REF.

TITLE

CONTRACT 1122
ADMIRALTY SOUTH OVERRUN TUNNEL
AS-BUILT DRAWING FOR VISUAL AND LANDSCAPE IMPACT
AND TREE PLANTING - PLANTING PLAN (SHRUBS)

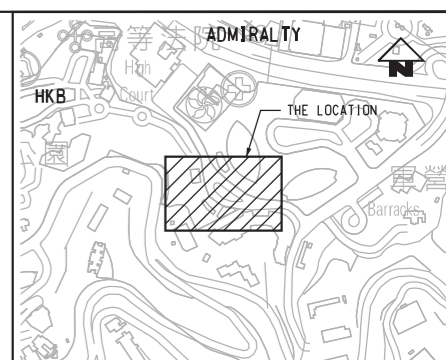
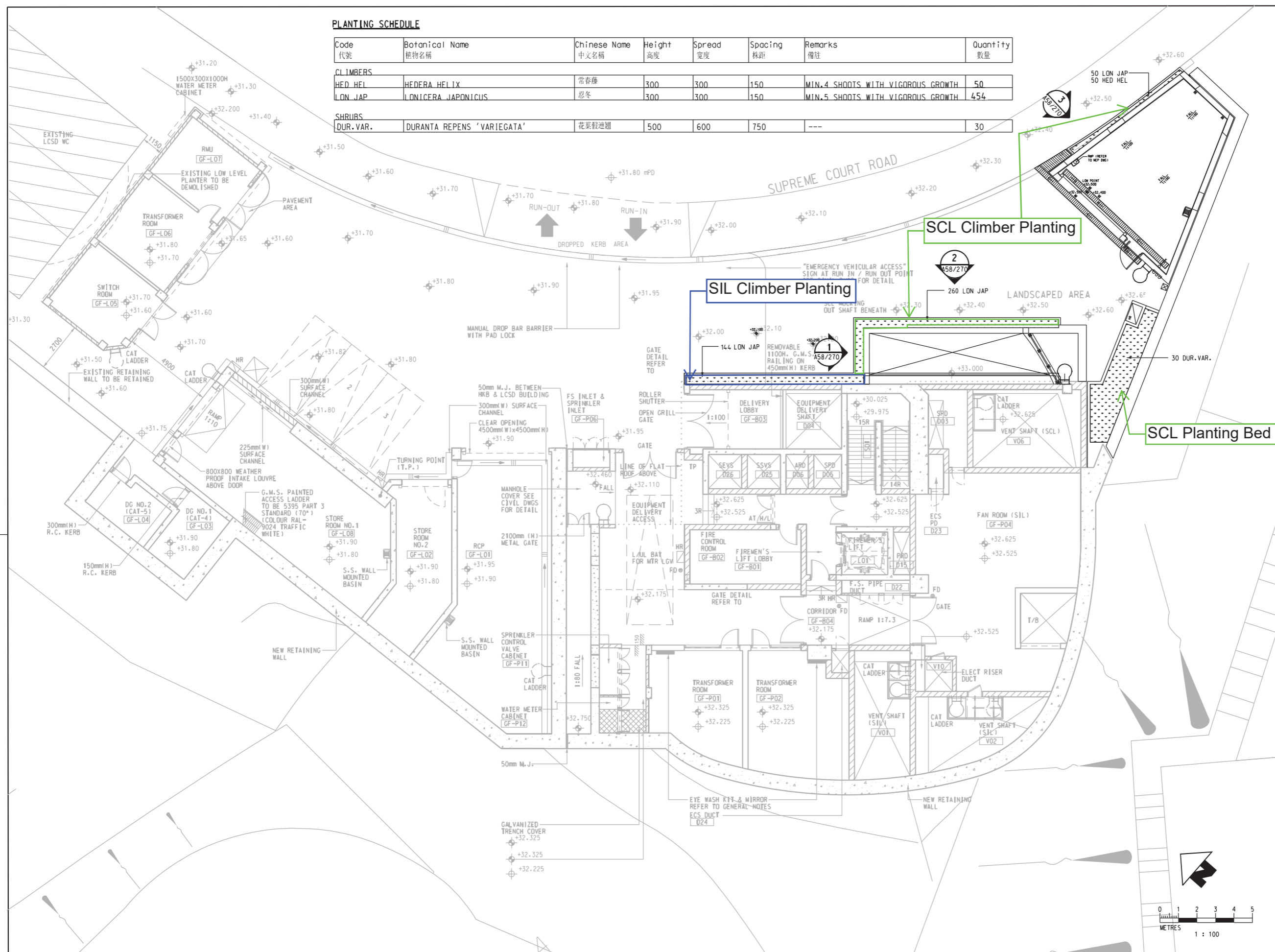
SCALE @ A1
1 : 200

DRAWING NO.
902/Z/HKB/T73/A58/251

REV.
A

PLANTING SCHEDULE

Code 代号	Botanical Name 植物名稱	Chinese Name 中文名稱	Height 高度	Spread 寬度	Spacing 株距	Remarks 備註	Quantity 數量
CLIMBERS							
HED HEL	HEDEA HELIX	常春藤	300	300	150	MIN. 4 SHOOTS WITH VIGOROUS GROWTH	50
LON JAP	LONICERA JAPONICUS	忍冬	300	300	150	MIN. 5 SHOOTS WITH VIGOROUS GROWTH	454
SHRUBS							
DUR.VAR.	DURANTA REPENS 'VARIEGATA'	花葉假連翹	500	600	750	---	30



KEY PLAN
1 : 5000

SCL Planting Bed

SCL Climber Planting

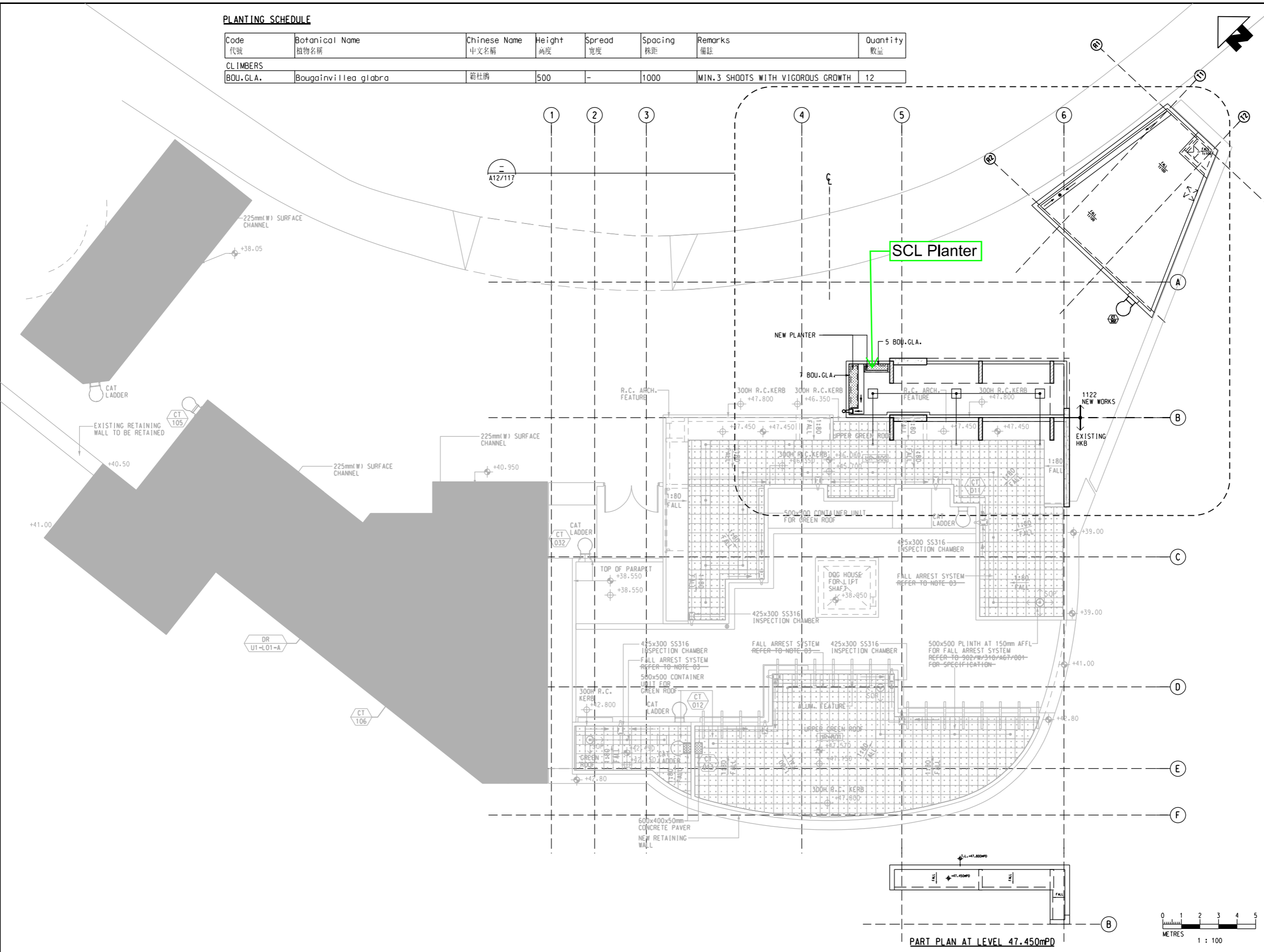
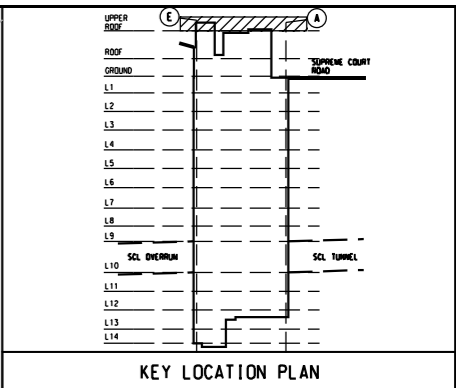
SIL Climber Planting



	SHATIN TO CENTRAL LINK		TITLE CONTRACT 1122 ADMIRALTY SOUTH OVERRUN TUNNEL AS-BUILT DRAWING FOR VISUAL AND LANDSCAPE IMPACT AND TREE PLANTING - PLANTING PLAN (SHRUBS AND CLIMBERS), SHEET 1 OF 2	
	ORIGINATOR			SCALE 1 : 100
	CADD REF.			DRAWING NO. 1122/Z/HKB/T73/A58/260
			REV. C	

PLANTING SCHEDULE

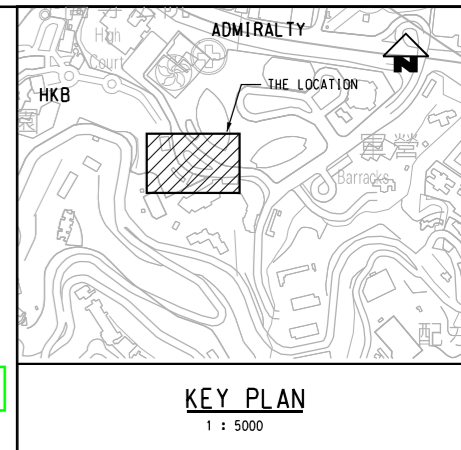
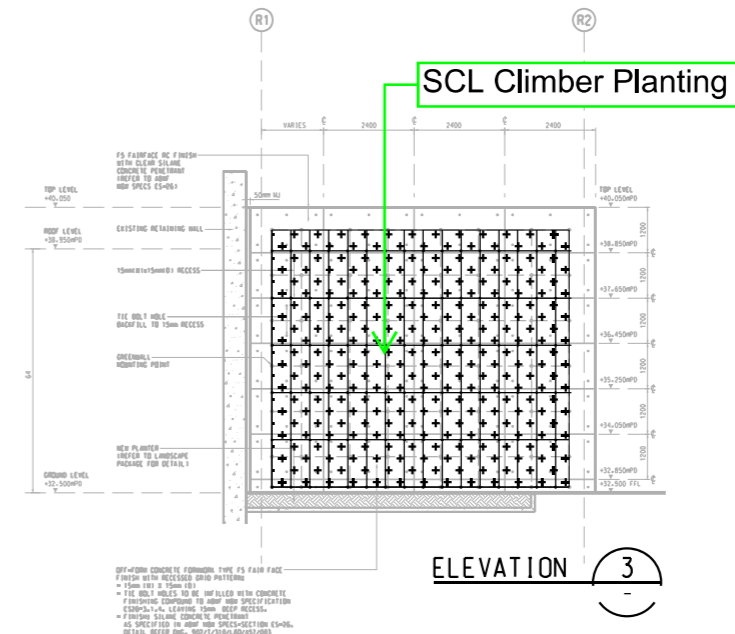
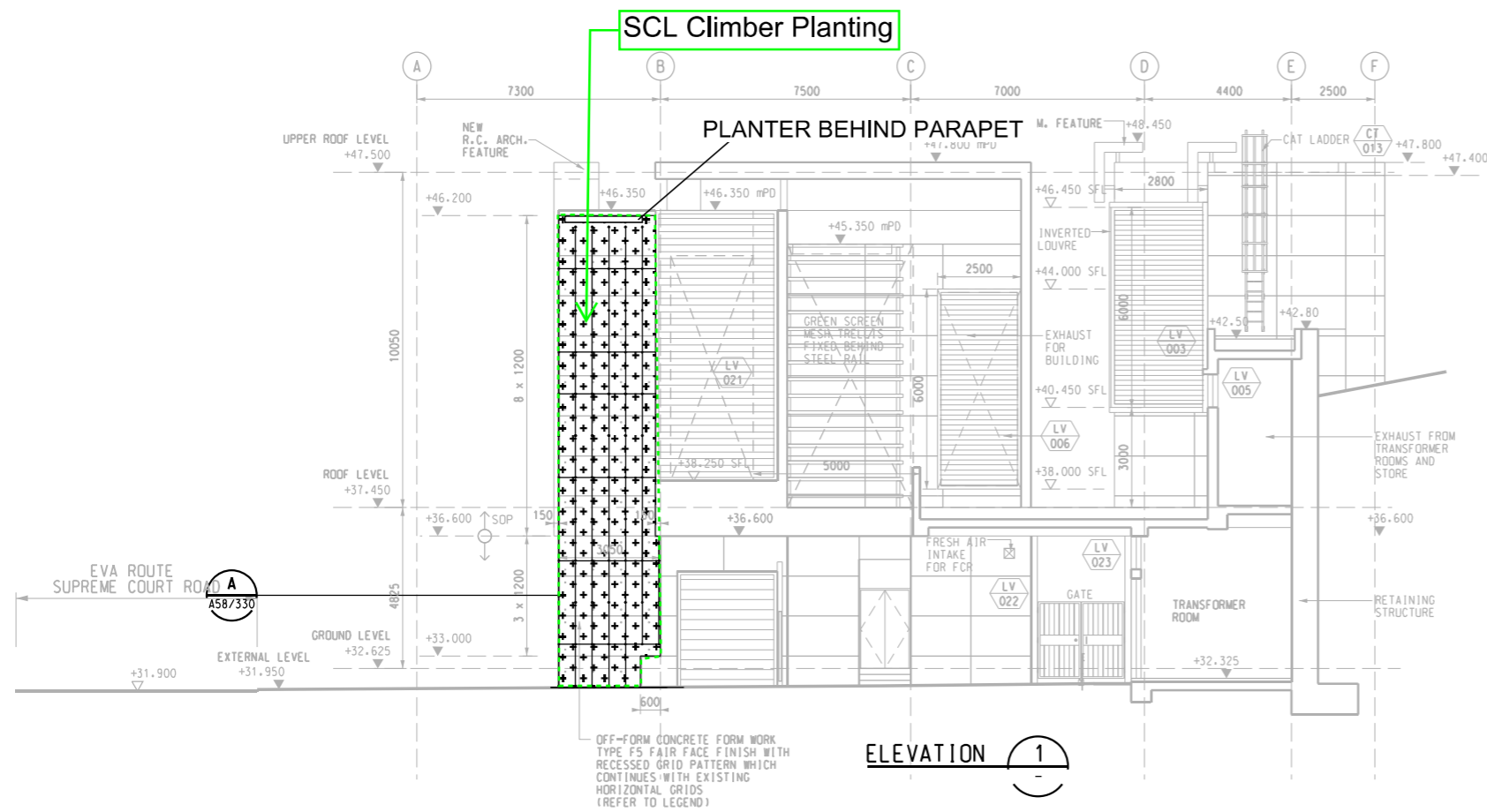
Code 代號	Botanical Name 植物名稱	Chinese Name 中文名稱	Height 高度	Spread 寬度	Spacing 株距	Remarks 備註	Quantity 數量
CLIMBERS							
BOU.GLA.	Bougainvillea glabra	勒杜鹃	500	-	1000	MIN.3 SHOOTS WITH VIGOROUS GROWTH	12



PART PLAN AT LEVEL 47.450mPD

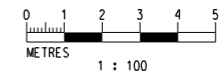
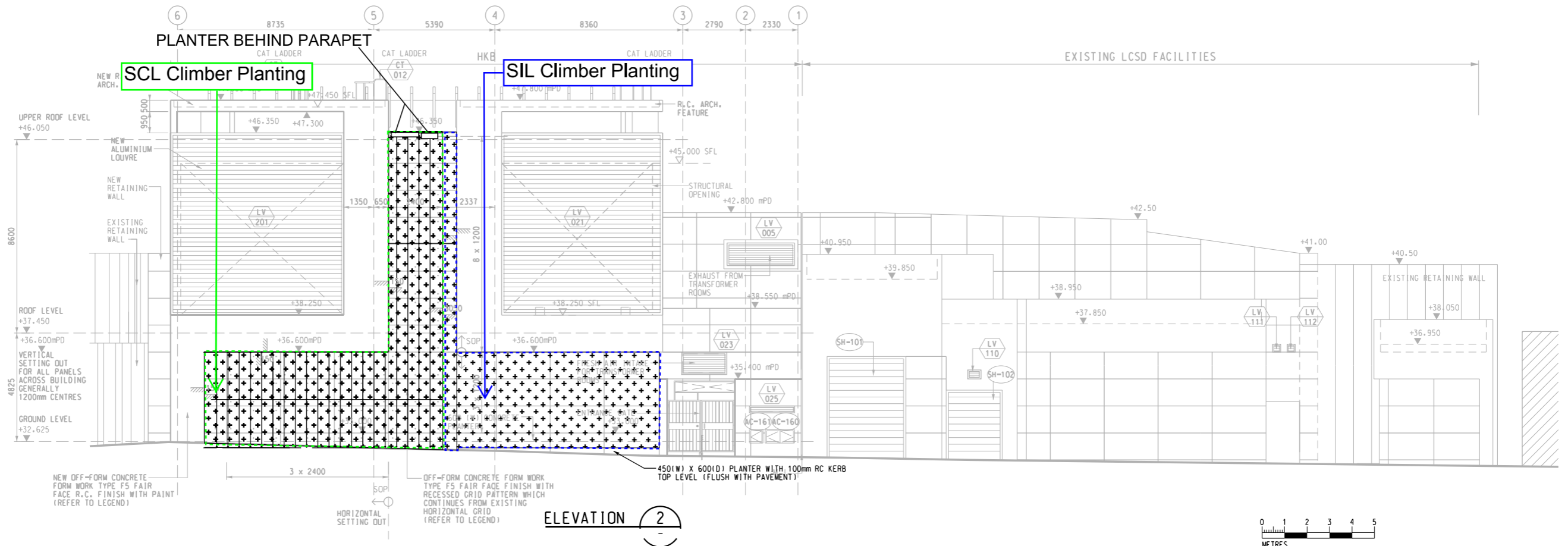


<p>MTR</p> <p>SHATIN TO CENTRAL LINK</p>	<p>TITLE CONTRACT 1122</p> <p>ADMIRALTY SOUTH OVERRUN TUNNEL</p> <p>AS-BUILT DRAWING FOR VISUAL AND LANDSCAPE IMPACT AND TREE PLANTING - PLANTING PLAN (SHRUBS AND CLIMBERS), SHEET 2 OF 2</p>	
	<p>ORIGINATOR</p>	<p>SCALE 1 : 100</p>
	<p>CADD REF.</p>	<p>DRAWING NO. 1122/Z/HKB/T73/A58/261</p> <p>REV. A</p>



LEGEND:

+ + + VERTICAL GREEN WALL



MTR	
SHATIN TO CENTRAL LINK	
ORIGINATOR	
CADD REF.	

TITLE CONTRACT 1122	
ADMIRALTY SOUTH OVERRUN TUNNEL	
AS-BUILT DRAWING FOR VISUAL AND LANDSCAPE IMPACT	
AND TREE PLANTING - VERTICAL GREEN WALL	
ARRANGEMENT	
SCALE 1 : 100	DRAWING NO. 1122/Z/HKB/T73/A58/270
REV. A	