

香港電燈有限公司
The Hongkong Electric Co., Ltd.



**Lamma Power Station Extension
Construction Phase
Monthly Environmental Monitoring & Audit Report**

August 2022

香港電燈有限公司
The Hongkong Electric Co., Ltd.



ENVIRONMENTAL IMPACT ASSESSMENT (EIA) ORDINANCE, CAP. 499

ENVIRONMENTAL PERMIT NO. EP-071/2000/D

**LAMMA POWER STATION EXTENSION
ENVIRONMENTAL MONITORING & AUDIT PROGRAMME
AT CONSTRUCTION PHASE**



Report Title	Lamma Power Station Extension – Unit L12 Monthly EM&A Report (August 2022)
Date	14 September 2022
Certified by	 (Mr. CHAN Hon Yeung, Environmental Team Leader)
Verified by	 Mr. Y T Tang (AECOM Asia Company Limited, Independent Environmental Checker)

TABLE OF CONTENT

EXECUTIVE SUMMARY

- 1. INTRODUCTION..... 1**
 - 1.1 Background 1
 - 1.2 Project Organisation 1
 - 1.3 Construction Works undertaken during the Reporting Month 1
 - 1.4 Summary of EM&A Requirements 4
- 2. AIR QUALITY..... 6**
 - 2.1 Monitoring Requirements 6
 - 2.2 Monitoring Locations 6
 - 2.3 Monitoring Equipment 6
 - 2.4 Monitoring Parameters, Frequency and Duration 6
 - 2.5 Monitoring Procedures and Calibration Details 7
 - 2.6 Results and Observations 8
- 3. NOISE 10**
 - 3.1 Monitoring Requirements 10
 - 3.2 Monitoring Locations 10
 - 3.3 Monitoring Equipment 10
 - 3.4 Monitoring Parameters, Frequency and Duration 10
 - 3.5 Monitoring Procedures and Calibration Details 11
 - 3.6 Results and Observations 11
- 4. ENVIRONMENTAL AUDIT 13**
 - 4.1 Review of Environmental Monitoring Procedures 13
 - 4.2 Assessment of Environmental Monitoring Results 13
 - 4.3 Waste Management 13
 - 4.4 Site Environmental Audit 14
 - 4.5 Status of Environmental Licensing and Permitting 14
 - 4.6 Implementation Status of Environmental Mitigation Measures 15
 - 4.7 Implementation Status of Event/Action Plans 15
 - 4.8 Implementation Status of Environmental Complaint Handling Procedures 15
- 5. FUTURE KEY ISSUES..... 17**
 - 5.1 Key Issues for the Coming Month 17
 - 5.2 Monitoring Schedules for the Next 3 Months 17
 - 5.3 Construction Program for the Next 3 Months 18
- 6. CONCLUSION..... 19**

LIST OF TABLES

Table 1.1	Construction Activities and Their Corresponding Environmental Mitigation Measures
Table 2.1	Air Quality Monitoring Locations
Table 2.2	Air Quality Monitoring Equipment
Table 2.3	Air Quality Monitoring Parameter, Duration and Frequency
Table 3.1	Noise Monitoring Equipment
Table 3.2	Noise Monitoring Duration and Parameter
Table 4.1	Summary of AL Level Exceedances on Monitoring Parameters
Table 4.2	Estimated Amounts of Waste in August 2022
Table 4.3	Summary of Environmental Licensing and Permit Status
Table 4.4	Environmental Complaints Received in August 2022
Table 4.5	Outstanding Environmental Complaints Carried Over

LIST OF FIGURES

Figure 1.1	Layout of Work Site
Figure 2.1	Location of Air Quality Monitoring Stations
Figure 3.1	Location of Noise Monitoring Stations

APPENDICES

Appendix A	Organization Chart
Appendix B	Action and Limit Levels for Air Quality and Noise
Appendix C	Environmental Monitoring Schedule
Appendix D	Air Quality Monitoring Results for August 2022
Appendix E	Noise Monitoring Results for August 2022
Appendix F	The QA/QC Procedures and Results
Appendix G	Event/Action Plans
Appendix H	Site Audit Summary
Appendix I	Summary of EMIS
Appendix J	Tentative Construction Programme
Appendix K	Monthly Waste Flow Table for August 2022

EXECUTIVE SUMMARY

This is the 148th monthly Environmental Monitoring and Audit (EM&A) report for the Project “Construction of Lamma Power Station Extension” prepared by the Environmental Team (ET). This report presents the results of impact monitoring on air quality and noise for the said project in August 2022.

The reclamation and submarine pipeline works were completed with the first gas-fired combined cycle unit (viz. Unit L9) commissioned in October 2006, working currently on base load operation. To cope with the scheduled retirement of the existing units at Lamma Power Station, the second gas-fired combined cycle unit (viz. Unit L10) L10 was commissioned for reliable operation in February 2020.

In September 2016, the Government approved HK Electric to construct the third combined cycle gas-fired generating unit (Unit L11) to implement the 2020 Fuel Mix Target. L11 was commissioned for reliable operation effective in May 2022. The operational EM&A work for L9, L10 and L11 is recorded in the separate monthly EM&A report for the Project “Operation of Lamma Power Station Extension”.

With the Government’s approval to build the fourth combined cycle gas-fired generating unit (L12) in July 2018, the associated construction work commenced in April 2019. When L12 is commissioned in 2023, the total gas-fired electricity generation will further rise to reach about 70% of our total output.

Air and noise monitoring were performed. The results were checked against the established Action/Limit (AL) levels. An on-site audit was conducted once per week. The implementation status of the environmental mitigation measures, Event/Action Plan and environmental complaint handling procedures were also checked.

Construction Activities Undertaken

Construction activities for Lamma Extension during the reporting month are tabulated as follows:

Item	Construction Activities
Unit L12 Civil and Building Works	Construction of Main Station Building, construction of No. 5 Chimney, construction of L12 GRS, construction of superstructure and cable trench works for ACB, construction of retaining wall and installation of precast parapet for Cable Bridge (North & South), construction of superstructure for shunt reactor compound extension and culvert removal and installation of precast chamber for No. 5 C.W. Intake.
Unit L12 Mechanical Erection	Condenser installation, HRSG installation and turbine block installation
Unit L12 Electrical, Instrumentation & Control Erection	Cable installation

Environmental Monitoring Works

All monitoring work at designated stations was performed as scheduled satisfactorily.

Air Quality

No exceedance of Action/Limit levels on 1-hour TSP and 24-hour TSP for air quality was recorded in the month.

Noise

No exceedance of Action and Limit levels for noise arising from the construction of Lamma Extension was recorded in the month.

Site Environmental Audit

EPD officials from Regional Office (South) visited Lamma Power Station on 4/8/2022. There was no adverse comment from EPD regarding the construction site.

Site audits were carried out on a weekly basis to monitor environmental issues on the construction site. The site conditions were generally satisfactory.

Environmental Licensing and Permitting

Description	Permit No.	Valid Period		Issued To	Date of Issuance
		From	To		
Varied Environmental Permit	EP-071/2000/D	28/09/20	-	HK Electric	28/09/20
Construction Noise Permit	GW-RS0121-22	01/03/22	31/08/22	Contractor	25/02/22
Construction Noise Permit	GW-RS0222-22	13/04/22	12/10/22	Contractor	11/04/22
Construction Noise Permit	GW-RS0551-22	10/07/22	07/01/23	Contractor	08/07/22
Construction Noise Permit	GW-RS0613-22	29/07/22	27/01/23	Contractor	27/07/22
WPCO Discharge Licence	WT00037613-2021	15/04/21	30/04/26	Contractor	15/04/21
WPCO Discharge Licence	WT00037665-2021	06/05/21	31/05/26	Contractor	06/05/21
Registration of Chemical Waste Producer	WPN5213-912-P2781-22	22/02/16	-	Contractor	22/02/16
Registration of Chemical Waste Producer	WPN5517-912-T2007-02	17/03/05	-	Contractor	17/03/05
Waste Disposal Billing Account	Account No.: 7038672	27/10/20	-	Contractor	27/10/20
Waste Disposal Billing Account	Account No.: 7039272	08/01/21	-	Contractor	08/01/21
Waste Disposal Billing Account	Account No.: 7041942	21/10/21	-	Contractor	21/10/21

Implementation Status of Environmental Mitigation Measures

Environmental mitigation measures for the construction activities as recommended in the EM&A manual were implemented in the reporting month.

Environmental Complaints

No complaint in relation to the environmental impact of the construction activities was received in the reporting month.

Future Key Issues

The future key issues to be considered in the coming month are as follows:

Unit L12 Civil and Building Works

- to continue monitoring the noise level during construction and to ensure compliance with the CNP's already obtained;
- to monitor and review the sufficiency of the dust suppression measures provided and increase the resources accordingly if necessary;
- to treat wastewater in sedimentation pit and tanks before discharge and to ensure compliance with the WPCO discharge licence already obtained;

Unit L12 Mechanical Erection

- to continue monitoring the noise level during construction and to ensure compliance with the CNP's already obtained;
- to continue executing the preventive measures for avoiding noise exceedance and keep monitoring/ reviewing the performance;
- to monitor and review the sufficiency of the dust suppression measures provided and increase the resources accordingly if necessary.

Unit L12 Electrical, Instrumentation & Control Erection

- to continue monitoring the noise level during construction and to ensure compliance with the CNP's already obtained;
- to continue executing the preventive measures for avoiding noise exceedance and keep monitoring/ reviewing the performance;
- to monitor and review the sufficiency of the dust suppression measures provided and increase the resources accordingly if necessary.

Concluding Remarks

The environmental performance of the project was generally satisfactory.

1. INTRODUCTION

1.1 Background

The Environmental Team (hereinafter called the “ET”) was formed within the Hongkong Electric Co. Ltd (HEC) to undertake Environmental Monitoring and Audit for “Construction of Lamma Power Station Extension” (hereinafter called the “Project”). Under the requirements of Section 6 of Environmental Permit EP-071/2000/D, an EM&A programme for impact environmental monitoring set out in the EM&A Manual (Construction Phase) is required to be implemented. In accordance with the EM&A Manual, environmental monitoring of air quality, noise and water quality and regular environmental audits are required for the Project. With the completion of reclamation and submarine pipeline works, no further marine water quality monitoring would be required.

The Project involves the construction of a gas-fired power station employing combined cycled gas turbine technology, forming an extension to the existing Lamma Power Station. The key elements of the Project including the construction activities associated with the transmission system and submarine gas pipeline are outlined as follows.

- dredging and reclamation to form approximately 22 hectares of usable area;
- construction of six 300MW class gas-fired combined cycle units;
- construction of a gas receiving station;
- construction of a transmission system linking the Lamma Extension to load centres on Hong Kong Island;
- laying of a gas pipeline for the supply of natural gas to the new power station

This report summarizes the environmental monitoring and audit work for the Project for the month of August 2022.

1.2 Project Organisation

An Environmental Management Committee (EMC) has been set up in HEC to oversee the Project. The management structure includes the following:

- Environmental Protection Department (The Authority);
- Environmental Manager (The Chairman of the Environmental Management Committee);
- Engineer;
- Independent Environmental Checker (IEC);
- Environmental Team (ET);
- Contractor.

The project organisation chart for the construction EM&A programme is shown in [Appendix A](#).

1.3 Construction Works undertaken during the Reporting Month

Construction activities for Unit L12 civil and building works were, construction of Main Station Building, construction of No.5 Chimney, construction of L12 GRS, construction of superstructure and cable trench works for ACB, and construction of retaining wall and installation of precast parapet for Cable Bridge (North & South), construction of superstructure for shunt reactor compound extension, reinstatement of culvert and seawall blocks and rock filling works for No. 5 C.W. Intake. Construction activities for Unit L12 mechanical erection

were condenser installation, HRSG installation and turbine block installation. Construction activity for Unit L12 electrical, instrumentation & control erection was cable installation. Layout plan for construction site is shown in [Figure 1.1](#).

The main construction activities carried out during the reporting month and the corresponding environmental mitigation measures are summarized in [Table 1.1](#). The implementation of major mitigation measures in the month is provided in [Appendix I](#).

Table 1.1 Construction Activities and Their Corresponding Environmental Mitigation Measures

Item	Construction Activities	Environmental Mitigation Measures
Unit L12 Civil and Building Works		
1.	<p><u>Construction of Main Station Building</u></p> <p>Construction of No.5 Chimney</p> <p>Construction of L12 GRS</p> <p><u>ACB</u></p> <p>Construction of superstructure</p> <p>Cable trench works</p>	<p>Air</p> <ul style="list-style-type: none"> - All regulated machine attached with valid exception/approval NRMM labels. - Water truck and water sprinkler system would be used. - Water spraying for concrete breaking works. - Soil stock would be covered with cement or tarpaulin or keep the entire surface wet. <p>Wheel washing facility was provided.</p> <p>Noise</p> <ul style="list-style-type: none"> - Works conducted during restricted hours should comply with the valid CNP. - Noise emission label was provided for air compressor. <p>Wastewater</p> <ul style="list-style-type: none"> - Wastewater should be treated in desilting pit and tanks before discharge. Solution should be added to speed up the sedimentation process. Sediment in pit and tanks must be removed regularly. The frequency would be in weekly basis depends on the volume of sediment accumulated in order to maintain sufficient volume for wastewater treatment. - <p>Waste Management</p> <ul style="list-style-type: none"> - Excavated soil was temporary stored for backfilling and reuse in other projects. - Scrape metal would be recycled. - Chemical waste should be collected by licensed collector.
2.	<p><u>Cable Bridge (North & South):</u></p>	<p>Air</p> <ul style="list-style-type: none"> - All regulated machine attached with valid

Item	Construction Activities	Environmental Mitigation Measures
	Construction of retaining wall and installation of precast parapet <u>Shunt Reactor Compound Extension</u> Construction of superstructure <u>No. 5 C.W. Intake</u> Reinstatement of culvert & seawall blocks with rock filling works	exception/approval NRMM labels. – Water truck, water sprinkler system and mist cannon were used. – Excavated soil slop covered with tarpaulin. – Wheel washing facilities was provided. – Water spraying on haul road and during concrete breaking. Noise – Noise emission label was provided for air compressor. – Works conducted during restricted hours should comply with the valid CNP. Waste Management – Excavated soil would be transferred to other project for reuse. Wastewater - Wastewater would be treated in desilting tanks or wastewater treatment facility before discharge. - Silt curtain was provided as preventive measures at Intake 5.
Unit L12 Mechanical Erection		
3.	Condenser installation HRSG installation Turbine block installation	Air – Dust suppression measures implemented according to the EMP. Noise – General noise mitigation measures employed at all work sites throughout the construction phase. Waste Management – Waste Management Plan submitted and implemented
Unit L12 Electrical, Instrumentation & Control Erection		
4.	Cable installation	Air – Dust suppression measures implemented according to the EMP. Noise – General noise mitigation measures employed at all work sites throughout the construction phase.

Item	Construction Activities	Environmental Mitigation Measures
		Waste Management – Waste Management Plan submitted and implemented.

1.4 Summary of EM&A Requirements

The detailed EM&A monitoring work for air quality and noise are described in Sections 2 and 3 respectively. Regular environmental site audits for air quality, noise, water quality and waste management were carried out.

The following environmental audits are summarized in Section 4 of this report:

- Environmental monitoring results;
- Waste Management Records;
- Weekly site audit results;
- The status of environmental licensing and permits for the Project;
- The implementation status of environmental protection and pollution control/ mitigation measures.

Future key issues will be reported in Section 5 of this report.

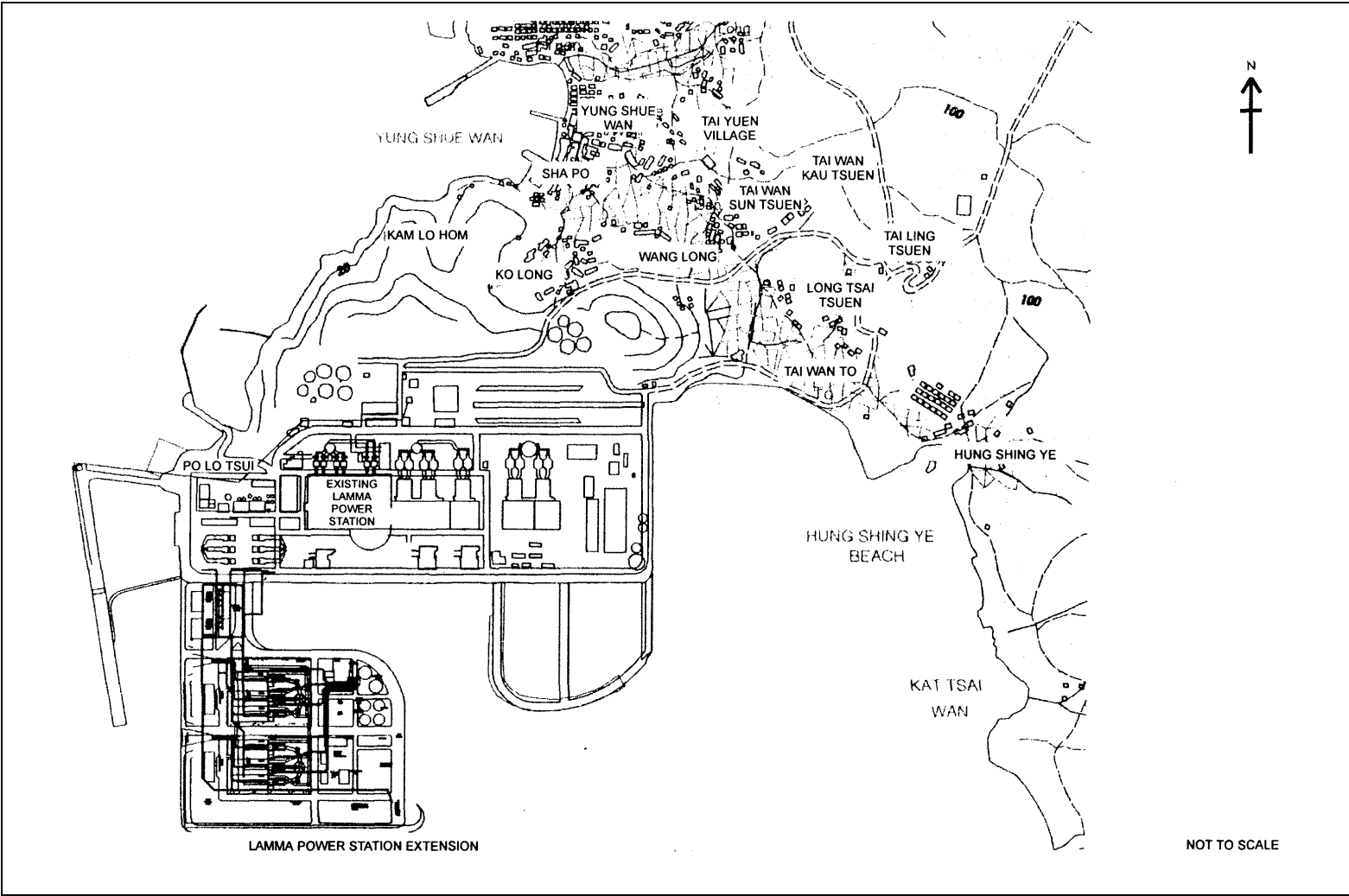


Figure 1.1 Layout of Work Site

2. AIR QUALITY

2.1 Monitoring Requirements

1-hour and 24-hour TSP monitoring at agreed frequencies were conducted to monitor air quality. The impact monitoring data were checked against the Action/Limit Levels as determined in the Baseline Monitoring Report (Construction Phase). [Appendix B](#) shows the established Action/Limit Levels for Air Quality.

2.2 Monitoring Locations

Three dust monitoring locations were selected for 1-hour TSP sampling (AM1, AM2 & AM3) while four monitoring locations were selected for 24-hour TSP sampling (AM1, AM2, AM3 and AM4). [Table 2.1](#) tabulates the monitoring stations. The locations of the monitoring stations are shown in [Figure 2.1](#).

Table 2.1 Air Quality Monitoring Locations

Location I.D.	Description
AM1	Reservoir
AM2	East Gate
AM3	Ash Lagoon
AM4	Tai Yuen Village

2.3 Monitoring Equipment

It is agreed with EPD that continuous 24-hour TSP air quality monitoring would be performed using TEOM continuous dust monitor and the MINIVOL Portable Sampler at AM1,2&3 and AM4 respectively. TEOM continuous dust monitors were used to carry out 1-hour TSP monitoring at AM1, AM2 and AM3. [Table 2.2](#) summarises the equipment used in dust monitoring.

Table 2.2 Air Quality Monitoring Equipment

Equipment	Model and Make
<i>24-hour sampling:</i>	
Continuous TSP Dust Meter	TEOM continuous dust monitor Thermo Scientific
MINIVOL Portable Sampler	AIRMETRICS
<i>1-hour sampling:</i>	
Continuous TSP Dust Meter	TEOM continuous dust monitor Thermo Scientific

2.4 Monitoring Parameters, Frequency and Duration

[Table 2.3](#) summarises the monitoring parameters, duration and frequency of air quality monitoring. The monitoring schedule for the reporting month is shown in [Appendix C](#).

Table 2.3 Air Quality Monitoring Parameter, Duration and Frequency

Monitoring Stations	Parameter	Duration	Frequency
AM1	1-hour TSP	1	3 hourly samples every 6 days
	24-hour TSP	24	Once every 6 days
AM2	1-hour TSP	1	3 hourly samples every 6 days
	24-hour TSP	24	Once every 6 days
AM3	1-hour TSP	1	3 hourly samples every 6 days
	24-hour TSP	24	Once every 6 days
AM4	24-hour TSP	24	Once every 6 days

2.5 Monitoring Procedures and Calibration Details

MINIVOL (24- hour TSP Monitoring):

Preparation of Filter Papers

- Visual inspection of filter papers was carried out to ensure that there were no pinholes, tears and creases;
- The filter papers were then labeled before sampling.
- The filter papers were equilibrated at room temperature and relative humidity < 50% for at least 24 hours before weighing.

Field Monitoring

- During collection of the sampled filter paper, the information on the elapse timer was logged. Site observations around the monitoring stations, which might have affected the monitoring results, were also recorded. Major pollution sources, if any, would be identified and reported.
- The post-sampling filter papers were removed carefully from the filter holder and folded to avoid loss of fibres or dust particles from the filter papers;
- The filter holder and its surrounding were cleaned;
- A pre-weighed blank filter paper for the next sampling was put in place and aligned carefully. The filter holder was then tightened firmly to avoid leakage;
- The programmable timer was set for the next 24 hrs sampling period;
- The post-sampling filter papers were equilibrated at room temperature and relative humidity < 50% for at least 24 hours before weighing.

TEOM continuous dust monitor (24- hour TSP and 1- hour TSP Monitoring):

- The following parameters of the TEOM model dust meters are regularly checked to ensure proper functionality:
 - Operation Mode;
 - Frequency of the tapered element;
 - Main flow;
 - Bypass flow.

Maintenance & Calibration

- The monitoring equipment and their accessories are maintained in good working conditions.

- Monitoring equipment is calibrated at monthly intervals. Calibration details are shown in [Appendix F](#).

2.6 Results and Observations

All dust monitoring works were conducted on schedule. All monitoring data and graphical presentation of the monitoring results are provided in [Appendix D](#). Key findings and observations are provided below:

1-hour TSP

No exceedance of 1-hour TSP Action/Limit Level was recorded in the month.

24-hour TSP

No exceedance of 24-hour TSP Action/Limit Level was recorded in the month.

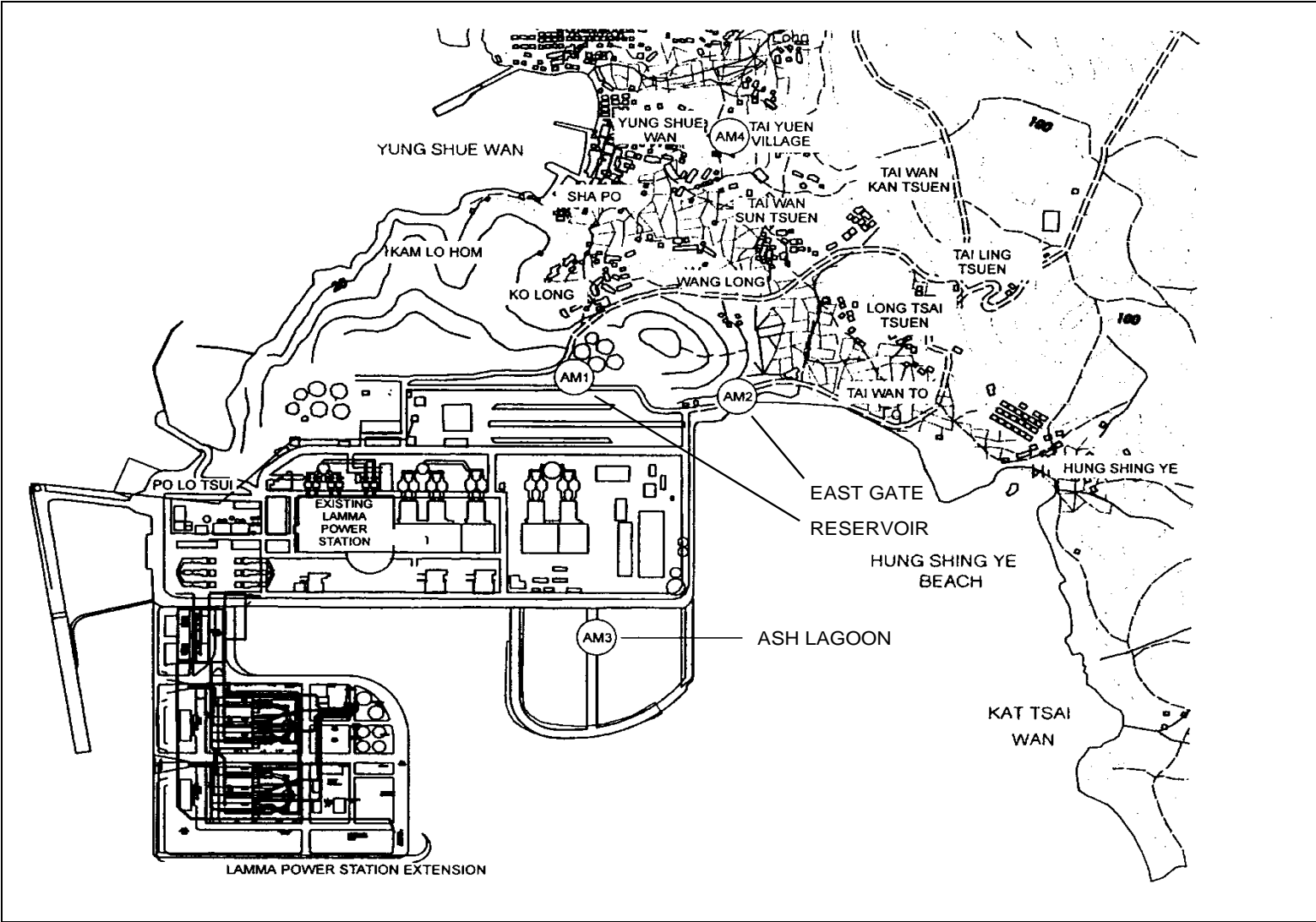


Figure 2.1 Location of Air Quality Monitoring Stations

3. NOISE

3.1 Monitoring Requirements

Continuous noise alarm monitoring at Ash Lagoon/Ching Lam were carried out to calculate the noise contributed by the construction activities at the two critical NSR's, viz. Long Tsai Tsuen/Hung Shing Ye and the school within the village of Tai Wan San Tsuen. The impact monitoring data for construction noise were checked against the limit levels specified in the EM&A Manual. With the availability of the construction noise permits, impact monitoring for the construction work during the restricted hours was also carried out. Section 3 presents the details of the construction noise permits.

The impact noise monitoring data were checked against the limit levels specified in the EM&A Manual. [Appendix B](#) shows the established Action/Limit Levels for noise.

3.2 Monitoring Locations

In accordance with the EM&A manual, the identified noise monitoring locations of Ash Lagoon and Ching Lam are shown in [Figure 3.1](#).

3.3 Monitoring Equipment

The sound level meters used for noise monitoring complied with International Electrotechnical Commission Publications 651:1979 (Type 1) and 804:1985 (Type 1). The noise monitoring equipment used is shown in [Table 3.1](#).

Table 3.1 Noise Monitoring Equipment

Equipment	Model
Sound level meters	B&K 2250
Sound level calibrator	B&K 4231

3.4 Monitoring Parameters, Frequency and Duration

Continuous alarm monitoring was carried out at Ash Lagoon and Ching Lam. The measurement duration and parameter of noise monitoring were presented in [Table 3.2](#) as follows:

Table 3.2 Noise Monitoring Duration and Parameter

Location	Time Period	Frequency	Parameter
----------	-------------	-----------	-----------

Ash Lagoon	Day-time: 0700-1900 hrs on normal weekdays	Day-time: 30 minutes	30-min L_{Aeq}
	Evening-time & holidays: 0700-2300 hrs on holidays; and 1900-2300 hrs on all other days	Evening-time & holidays: 5 minutes	5-min L_{Aeq}
Ching Lam	Night-time: 2300-0700 hrs of next day	Night-time: 5 minutes	5-min L_{Aeq}

3.5 Monitoring Procedures and Calibration Details

Monitoring Procedures

Continuous Noise Monitoring for Lamma Extension Construction

The measured noise levels (MNL's) were collected at the noise alarm monitoring stations at Ash Lagoon and Ching Lam. The notional background noise levels (viz. baseline noise data at Ash Lagoon and Ching Lam) were applied to correct the corresponding MNL's in 30-min/5-min L_{Aeq} .

A wind speed sensor was installed at Station Building Rooftop. The wind speed signal was used to determine whether the data from Ash Lagoon and Ching Lam noise alarm monitoring stations were affected. The instantaneous data was discarded in case the instantaneous wind speed exceeded 10 m/s. The 30-min/5-min L_{Aeq} was considered valid only if the amount of valid data was equal to or above 70%.

Equipment Calibration

The sound level meters and calibrators were verified by the manufacturer or accredited laboratory. With the endorsement of the Independent Environmental Checker, the enhancement of calibration of sound level meter at the noise monitoring stations was implemented. The monthly manual on-site calibration using sound level calibrator was replaced by the daily auto charge injection calibration function of the sound level meter. For additional quality assurance, manual on-site calibration would still be conducted for the noise monitoring stations once every 6 months. The manual on-site calibrations for Ching Lam and Ash Lagoon noise monitoring stations were carried out in March and May 2022 respectively. The next calibrations for the two corresponding noise monitoring stations were scheduled in September and November 2022 respectively.

3.6 Results and Observations

Continuous noise monitoring was conducted at the two monitoring stations at Ash Lagoon and Ching Lam.

All monitoring results and their graphical presentations are provided in [Appendix E](#). No exceedance of noise Action/Limit Level was recorded in the month.

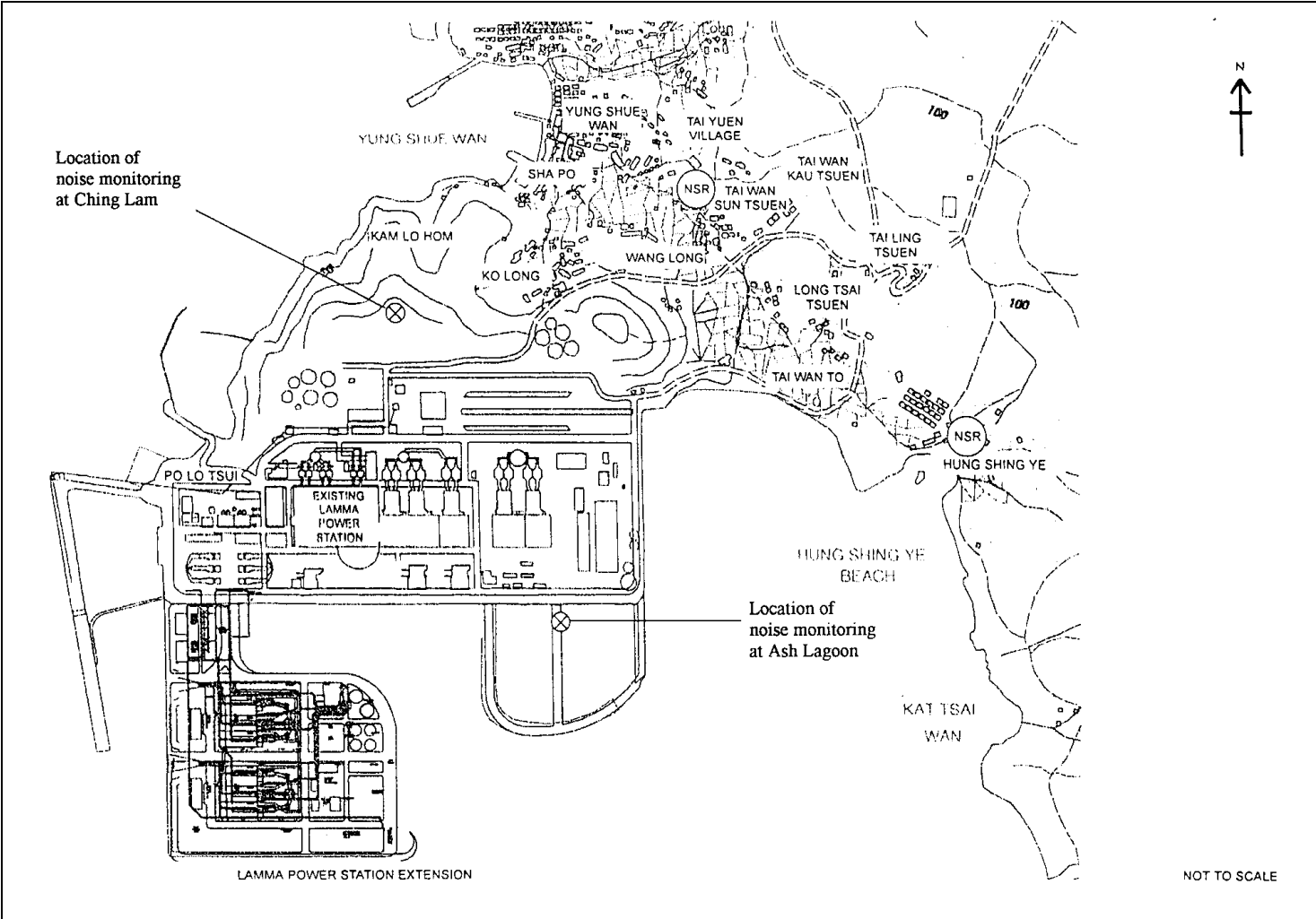


Figure 3.1 Location of Noise Monitoring Stations

4. ENVIRONMENTAL AUDIT

4.1 Review of Environmental Monitoring Procedures

The environmental monitoring procedures were regularly reviewed by the Environmental Team. No modification to the existing monitoring procedures was recommended.

4.2 Assessment of Environmental Monitoring Results

Monitoring results for Air Quality and Noise

The environmental monitoring results for Air Quality and Noise in the reporting month presented in Sections 2 and 3 respectively are summarized in [Table 4.1](#).

Table 4.1 Summary of AL Level Exceedances on Monitoring Parameters

Item	Parameter Monitored	Monitoring Period	No. of Exceedances In		Event/Action Plan Implementation Status and Results
			Action Level	Limit Level	
Air					
1	Ambient TSP (24-hour)	01/08/2022-31/08/2022	0	0	
2	Ambient TSP (1-hour)	01/08/2022-31/08/2022	0	0	
Noise					
1	Noise level at the critical NSR's predicted by the noise alarm monitoring system	01/08/2022-31/08/2022	0	0	

4.3 Waste Management

Wastes generated from this Project include inert construction and demolition (C&D) materials and non-inert C&D materials. Inert C&D materials comprise excavated materials and broken concrete. Non-inert C&D materials comprise general refuse, metals and paper/ cardboard packaging, plastics, chemical waste, etc.

Inert C&D material and non-inert C&D material disposed of in August 2022 are shown in [Table 4.2](#).

Table 4.2 Estimated Amounts of Waste in August 2022

Total Inert C&D Waste Materials	Non-inert C&D Materials		
	C&D Materials Recycled	C&D Waste Disposed of at Landfill	Chemical Waste

0 Tonnes	0 Tonnes	83.05 Tonnes	600 Litres
----------	----------	--------------	------------

The monthly waste flow tables prepared by the contractors are attached in [Appendix K](#)

4.4 Site Environmental Audit

EPD officials from Regional Office (South) visited Lamma Power Station on 4/8/2022. There was no adverse comment from EPD regarding the construction site.

Site audits were carried out by ET on a weekly basis to monitor environmental issues at the construction sites to ensure that all mitigation measures were implemented timely and properly. The site audit findings for the reporting month are summarized in [Appendix H](#). The site conditions were generally satisfactory. All required mitigation measures were implemented.

4.5 Status of Environmental Licensing and Permitting

All permits/licenses obtained for the project are summarised in [Table 4.3](#).

Table 4.3 Summary of Environmental Licensing and Permit Status

Description	Permit No.	Valid Period		Highlights	Status
		From	To		
Varied Environmental Permit	EP-071/2000/D	28/09/20	-	The whole construction work site	Valid
Construction Noise Permit	GW-RS0121-22	01/03/22	31/08/22	Power Block Facilities works for Unit L12. Operation of PME during restricted hours	Valid
Construction Noise Permit	GW-RS0222-22	13/04/22	12/10/22	Construction site of Unit L12. Operation of PME during restricted hours	Valid
Construction Noise Permit	GW-RS0551-22	10/07/22	07/01/23	Construction site of Unit L12. Operation of PME during restricted hours	Valid
Construction Noise Permit	GW-RS0613-22	29/07/22	27/01/23	Civil and Building Works for Unit L12. Operation of PME during restricted hours	Valid
WPCO Discharge Licence#	WT00037613-2021	15/04/21	30/04/26	Civil and Building Works for No.5 C.W. Intake and Cable Bridge	Valid
WPCO Discharge Licence##	WT00037665-2021	06/05/21	31/05/26	Civil and Building Works for Unit L12	Valid

Description	Permit No.	Valid Period		Highlights	Status
		From	To		
Registration of Chemical Waste Producer	WPN5213-912-P2781-22	22/02/16	-	Civil and Building Works	Valid
Registration of Chemical Waste Producer	WPN5517-912-T2007-02	17/03/05	-	E&M Equipment Installation and Maintenance	Valid
Waste Disposal Billing Account	Account No.: 7038672	27/10/20	-	Civil works for Unit L12 No.5 C.W. intake and cable bridge	Valid
Waste Disposal Billing Account	Account No.: 7039272	08/01/21	-	Civil and building works for Unit L12	Valid
Waste Disposal Billing Account	Account No.: 7041942	21/10/21	-	E&M Erection of Power Block Facilities – L12	Valid

Notes: # and ## - Water quality monitoring was carried out in August 2022 and the results of which would be reported separately by the contractor.

4.6 Implementation Status of Environmental Mitigation Measures

Mitigation measures detailed in the permits and the EM&A Manual (Construction Phase) are required to be implemented. An updated summary of the Environmental Mitigation Implementation Schedule (EMIS) is presented in [Appendix I](#).

4.7 Implementation Status of Event/Action Plans

The Event/Action Plans extracted from the EM&A Manual (Construction Phase) are presented in [Appendix G](#).

4.8 Implementation Status of Environmental Complaint Handling Procedures

In August 2022, no complaint in relation to the environmental impact of the construction activities was received.

Table 4.4 Environmental Complaints Received in August 2022

Case Reference / Date, Time Received / Date, Time Concerned	Descriptions / Actions Taken	Conclusion / Status
Nil	N/A	N/A

Table 4.5 Outstanding Environmental Complaints Carried Over

Case Reference / Date, Time Received / Date, Time Concerned	Descriptions / Actions Taken	Conclusion / Status
Nil	N/A	N/A

5. FUTURE KEY ISSUES

5.1 Key Issues for the Coming Month

Key issues to be considered in the coming month include:

Unit L12 Civil and Building Works

Noise Impact

- To continue monitoring the noise level during construction and to ensure compliance with the CNP's already obtained.

Air Impact

- To monitor and review the sufficiency of the dust suppression measures provided and increase the resources accordingly if necessary.

Water Impact

- To treat wastewater in sedimentation pit and tanks before discharge and to ensure compliance in accordance with the WPCO discharge licence already obtained.

Unit L12 Mechanical Erection

Noise Impact

- To continue monitoring the noise level during construction and to ensure compliance with the CNP's already obtained.
- To continue executing the preventive measures for avoiding noise exceedance and keep monitoring/ reviewing the noise performance.

Air Impact

- To monitor and review the sufficiency of the dust suppression measures provided and increase the resources accordingly if necessary.

Unit L12 Electrical, Instrumentation & Control Erection

Noise Impact

- To continue monitoring the noise level during construction and to ensure compliance with the CNP's already obtained.
- To continue executing the preventive measures for avoiding noise exceedance and keep monitoring/ reviewing the noise performance.

Air Impact

- To monitor and review the sufficiency of the dust suppression measures provided and increase the resources accordingly if necessary.

5.2 Monitoring Schedules for the Next 3 Months

The tentative environmental monitoring schedules for the next 3 months are shown in [Appendix C](#).

5.3 Construction Program for the Next 3 Months

The tentative construction programs for the next 3 months are shown in [Appendix J](#).

6. CONCLUSION

All monitoring work at designated stations was performed as scheduled satisfactorily. The environmental monitoring works and site inspection were performed as scheduled in the reporting month. All monitoring results were checked and reviewed.

No Action/Limit level exceedance on 1-hour and 24-hour TSP level was recorded in the reporting month.

No Action/Limit level exceedance on noise was recorded in the reporting month.

Environmental mitigation measures recommended in the EM&A manual for the construction activities were implemented in the reporting month. No complaint in relation to the environmental impact of the construction activities was received in the reporting month. No prosecution was received for this Project in the reporting period.

The environmental performance of the Project was generally satisfactory.

Appendix A Organization Chart

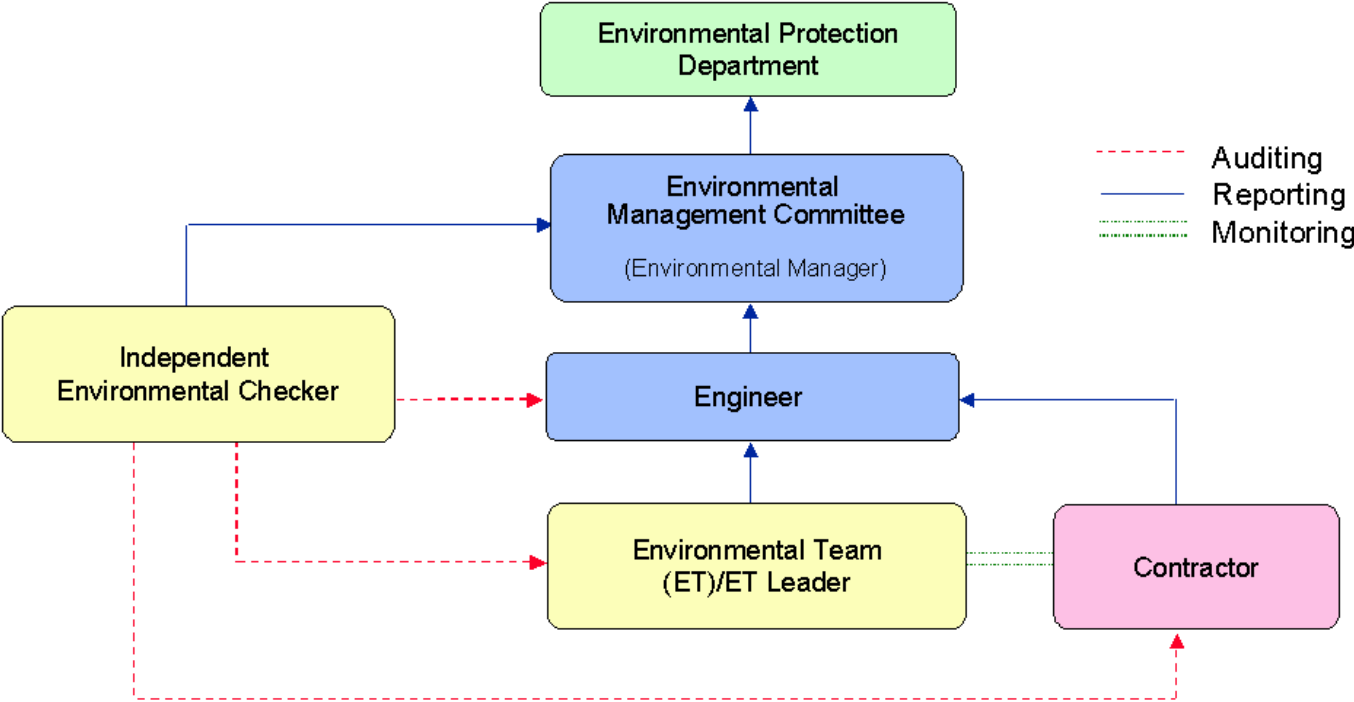


Figure A.1 Organisation of EM&A Programme at Construction Phase

Appendix B Action and Limit Levels for Air Quality and Noise Monitoring

B.1. Air

Table B.1 Action and Limit Levels for 1-hour and 24-hour TSP

	Action Level, $\mu\text{g}/\text{m}^3$	Limit Level, $\mu\text{g}/\text{m}^3$
1-hour TSP*	340	500
24-hour TSP	190	260

* No Action/Limit Level for 1-hour TSP is applied to AM4 where no real time dust monitor is installed.

B.2. Noise

Table B.2 AL Levels for Construction Noise (Other than Percussive Piling)

Parameters	Action	Limit
Noise Levels at the NSR's at Long Tsai Tsuen/Hung Shing Ye and school within the village of Tai Wan San Tsuen predicted by the noise alarm monitoring system	When one or more documented complaints are received	a. 75 dB(A) in $L_{Aeq,30 \text{ min}}$ (07:00-19:00 hrs on normal weekdays) (Note 1)
Manual noise monitoring at the nearest Pak Kok Tsui residences to cable landing points N4 and N5		b. subject to statutory control under the Noise Control Ordinance (07:00-23:00 hrs on holidays and 19:00-23:00 hrs on all other days). Set to 60 dB(A) in $L_{Aeq,5 \text{ min}}$
		c. subject to statutory control under the Noise Control Ordinance (23:00-07:00 hrs of next day). Set to 45 dB(A) in $L_{Aeq,5 \text{ min}}$
<p>Note:</p> <p>1. For educational institution, the limit level shall be 70 dB(A), reduced to 65 dB(A) during examination periods.</p>		

Appendix C Environmental Monitoring Schedule

Table C.1 Monitoring schedule for 24hr and 1hr TSP monitoring for Lamma Extension Construction (August 2022 to November 2022)

24hr TSP Monitoring	1hr TSP Monitoring
5/August/2022	5/August/2022 1500hr to 1800hr
11/August/2022	11/August/2022 1500hr to 1800hr
17/August/2022	17/August/2022 1500hr to 1800hr
23/August/2022	23/August/2022 1500hr to 1800hr
29/August/2022	29/August/2022 1500hr to 1800hr
4/September/2022	4/September/2022 1500hr to 1800hr
10/September/2022	10/September/2022 1500hr to 1800hr
16/September/2022	16/September/2022 1500hr to 1800hr
22/September/2022	22/September/2022 1500hr to 1800hr
28/September/2022	28/September/2022 1500hr to 1800hr
4/October/2022	4/October/2022 1500hr to 1800hr
10/October/2022	10/October/2022 1500hr to 1800hr
16/October/2022	16/October/2022 1500hr to 1800hr
22/October/2022	22/October/2022 1500hr to 1800hr
28/October/2022	28/October/2022 1500hr to 1800hr
3/November/2022	3/November/2022 1500hr to 1800hr
9/November/2022	9/November/2022 1500hr to 1800hr
15/November/2022	15/November/2022 1500hr to 1800hr
21/November/2022	21/November/2022 1500hr to 1800hr
27/November/2022	27/November/2022 1500hr to 1800hr

APPENDIX D AIR QUALITY MONITORING RESULTS

Site: Lamma Power Station Extension

Month: August 2022

24 hour TSP Measurement:-

Date	TSP concentration ($\mu\text{g}/\text{m}^3$)				Weather Information (From Hong Kong Observatory)		
	Reservoir (AM1)	East Gate (AM2)	Ash Lagoon (AM3)	Tai Yuen Village (AM4)	Mean Wind Speed (km/hr)	Prevailing Wind Dir. ($^{\circ}$)	Mean R.H. (%)
5/8/2022	13	10	13	11	15.1	30	94
11/8/2022	18	14	13	18	25.8	90	90
17/8/2022	13	9	5	13	18.1	100	86
23/8/2022	49	39	32	29	11.6	270	77
29/8/2022	25	19	21	33	10.3	80	78

1 hour TSP Measurement:-

Date	Time	TSP concentration ($\mu\text{g}/\text{m}^3$)		
		Reservoir (AM1)	East Gate (AM2)	Ash Lagoon (AM3)
5/8/2022	15:00 - 15:59	12	7	13
	16:00 - 16:59	4	6	9
	17:00 - 17:59	6	6	7
11/8/2022	15:00 - 15:59	12	11	5
	16:00 - 16:59	6	8	4
	17:00 - 17:59	5	7	6
17/8/2022	15:00 - 15:59	18	16	10
	16:00 - 16:59	20	13	10
	17:00 - 17:59	10	7	7
23/8/2022	15:00 - 15:59	197	47	52
	16:00 - 16:59	104	42	45
	17:00 - 17:59	70	32	36
29/8/2022	15:00 - 15:59	34	17	17
	16:00 - 16:59	26	22	18
	17:00 - 17:59	22	22	18

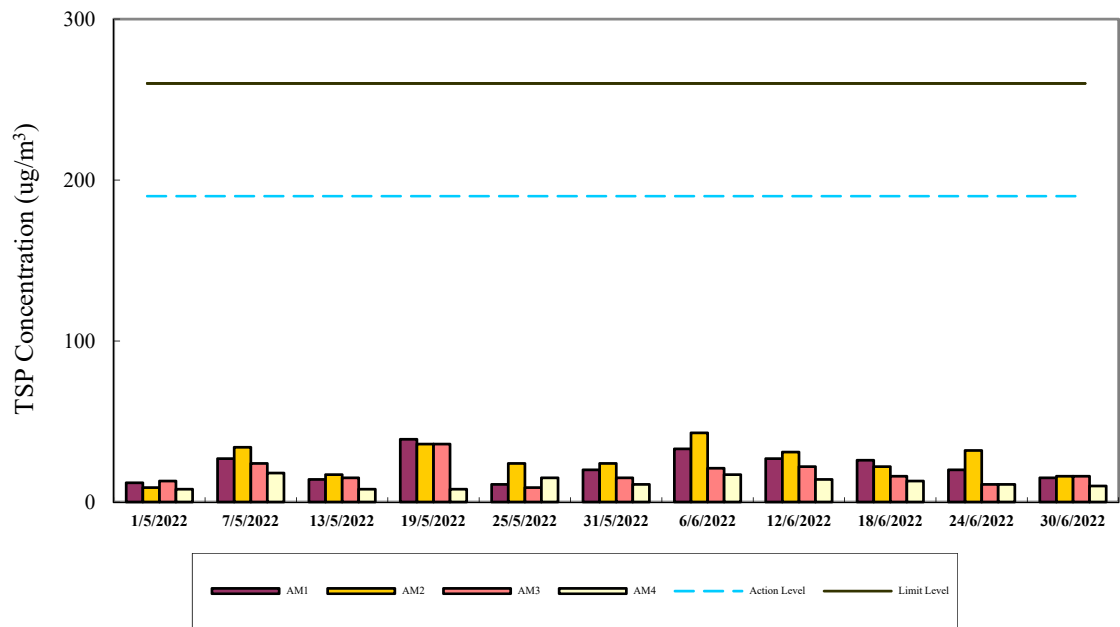
	1-hr TSP	24-hr TSP
	($\mu\text{g}/\text{m}^3$)	($\mu\text{g}/\text{m}^3$)
Action Level	340	190
Limit Level	500	260

Calibration: Calibration details are shown in appendix F.

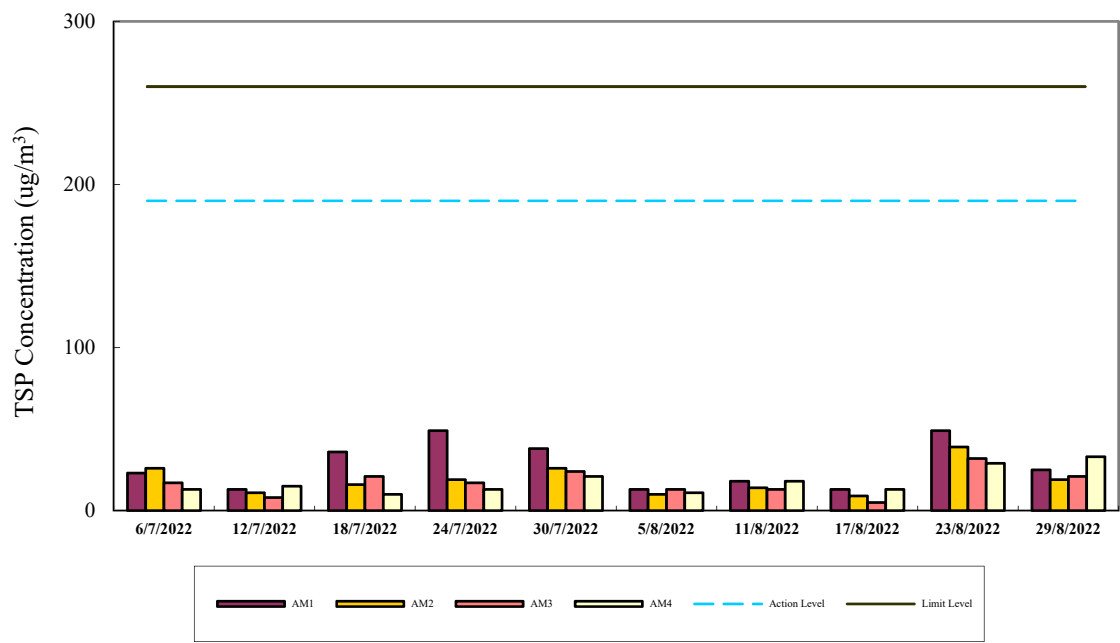
Equipment used:

Location	1-hr TSP	24-hr TSP
Reservoir, East Gate and Ash Lagoon	TEOM	TEOM
Tai Yuen Village	-	MINIVOL Portable Sampler

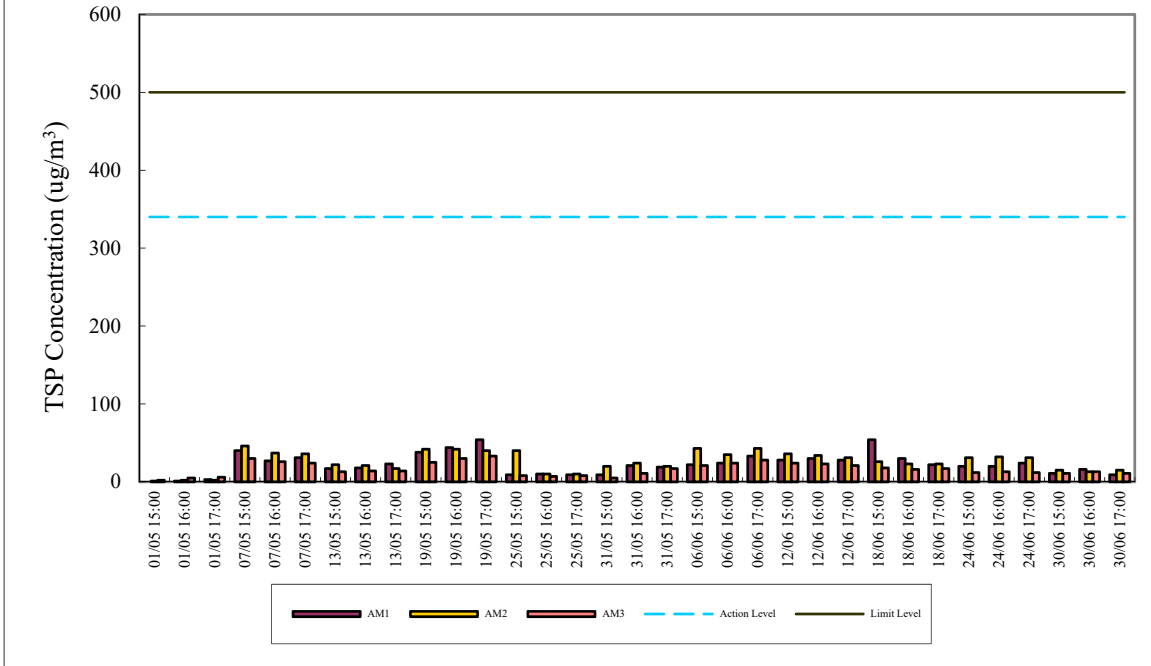
24-hr TSP Air Monitoring Data (May 2022 - June 2022)



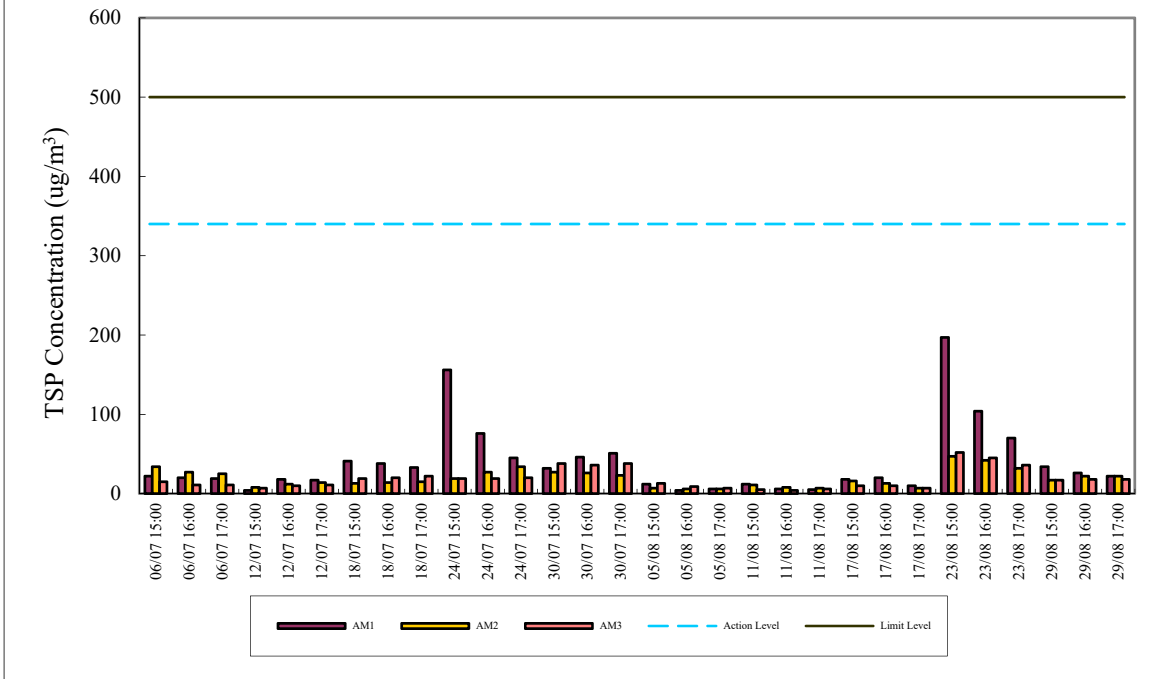
24-hr TSP Air Monitoring Data (July 2022 - August 2022)



1-hr TSP Air Monitoring Data (May 2022 - June 2022)



1-hr TSP Air Monitoring Data (July 2022 - August 2022)



Appendix E

Continuous Noise Monitoring Results for August 2022

Site: Lamma Power Station Extension Construction
 Measurement Location: Ash Lagoon and Ching Lam
 Measurement Parameter: 30-min Leq (07:00-19:00 hrs on normal weekdays)
 5-min Leq (07:00-23:00 hrs on holidays and
 19:00-23:00 hrs on all other days, and 23:00-
 07:00 hrs of next day)
 Noise Equipment: B&K 2250 sound level meters and B&K 4231 sound
 Level calibrator
 Lab. Calibration Date: B&K 2250 sound level meters - 21/10/2021 (Ash Lagoon)
 03/09/2021 (Ching Lam)
 B&K 4231 calibrator (21/10/2021)

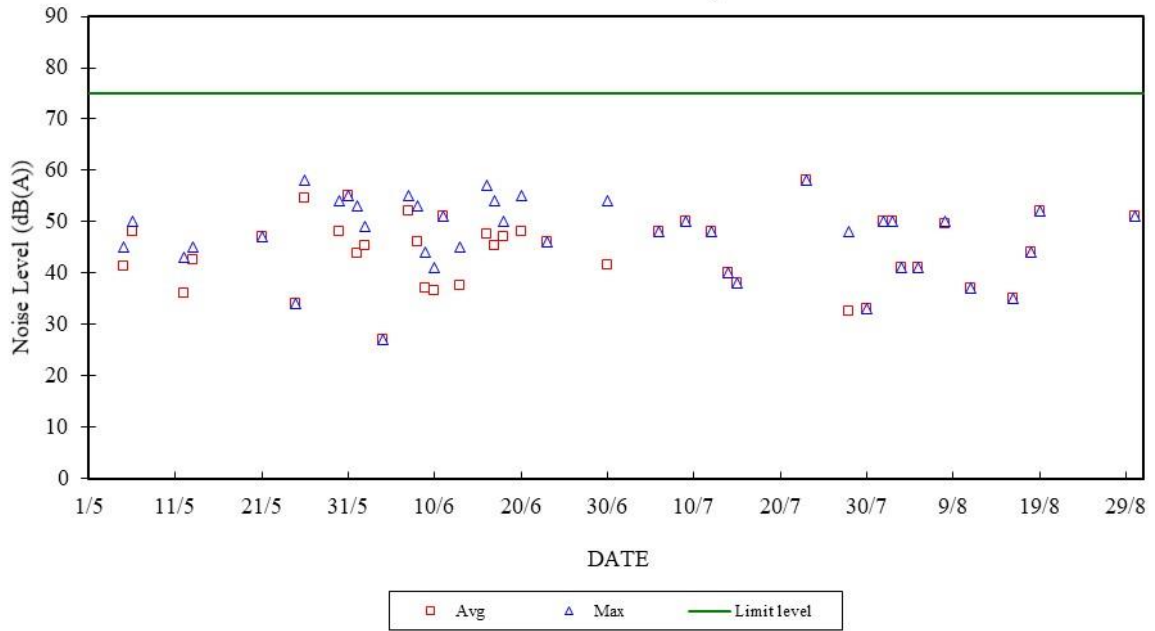
Date	Time	Calculated Noise Level at NSR at Long Tsai Tsuen/Hung Shing Ye (dB(A))		Limit Noise Level (dB(A))	Calculated Noise Level at NSR at the school within Tai Wan San Tsuen (dB(A))		Limit Noise Level (dB(A))
		Max	Avg		Max	Avg	
01/08/2022	07:00-19:00	50	50	75	60	44	70
01/08/2022	19:00-23:00	---	---	60	49	42	60
01/08/2022	23:00-07:00	43	43	45	41	35	45
02/08/2022	07:00-19:00	50	50	75	59	41	70
02/08/2022	19:00-23:00	55	47	60	57	38	60
02/08/2022	23:00-07:00	42	39	45	45	33	45
03/08/2022	07:00-19:00	41	41	75	48	37	70
03/08/2022	19:00-23:00	---	---	60	51	34	60
03/08/2022	23:00-07:00	45	41	45	44	32	45
04/08/2022	07:00-19:00	---	---	75	43	35	70
04/08/2022	19:00-23:00	27	27	60	40	31	60
04/08/2022	23:00-07:00	45	40	45	45	35	45
05/08/2022	07:00-19:00	41	41	75	43	38	70
05/08/2022	19:00-23:00	---	---	60	38	28	60
05/08/2022	23:00-07:00	32	29	45	42	37	45
06/08/2022	07:00-19:00	---	---	75	47	38	70
06/08/2022	19:00-23:00	34	32	60	49	35	60
06/08/2022	23:00-07:00	41	41	45	43	35	45
07/08/2022	07:00-23:00	42	38	60	56	38	60
07/08/2022	23:00-07:00	40	35	45	40	33	45
08/08/2022	07:00-19:00	50	50	75	56	41	70
08/08/2022	19:00-23:00	---	---	60	51	40	60
08/08/2022	23:00-07:00	44	40	45	44	35	45
09/08/2022	07:00-19:00	---	---	75	---	---	70
09/08/2022	19:00-23:00	45	45	60	50	46	60
09/08/2022	23:00-07:00	---	---	45	---	---	45
10/08/2022	07:00-19:00	---	---	75	---	---	70
10/08/2022	19:00-23:00	46	38	60	50	38	60
10/08/2022	23:00-07:00	43	37	45	45	36	45
11/08/2022	07:00-19:00	37	37	75	39	33	70
11/08/2022	19:00-23:00	---	---	60	47	38	60
11/08/2022	23:00-07:00	45	39	45	44	38	45
12/08/2022	07:00-19:00	---	---	75	54	40	70
12/08/2022	19:00-23:00	38	36	60	50	32	60
12/08/2022	23:00-07:00	37	37	45	44	36	45
13/08/2022	07:00-19:00	---	---	75	52	41	70

13/08/2022	19:00-23:00	---	---	60	42	36	60
13/08/2022	23:00-07:00	34	30	45	42	35	45
14/08/2022	07:00-23:00	42	35	60	47	36	60
14/08/2022	23:00-07:00	43	37	45	42	34	45
15/08/2022	07:00-19:00	---	---	75	9	9	70
15/08/2022	19:00-23:00	---	---	60	37	35	60
15/08/2022	23:00-07:00	45	39	45	43	38	45
16/08/2022	07:00-19:00	35	35	75	60	39	70
16/08/2022	19:00-23:00	---	---	60	41	37	60
16/08/2022	23:00-07:00	43	37	45	44	40	45
17/08/2022	07:00-19:00	---	---	75	54	38	70
17/08/2022	19:00-23:00	---	---	60	38	33	60
17/08/2022	23:00-07:00	43	39	45	43	36	45
18/08/2022	07:00-19:00	44	44	75	60	51	70
18/08/2022	19:00-23:00	---	---	60	37	33	60
18/08/2022	23:00-07:00	42	39	45	42	34	45
19/08/2022	07:00-19:00	52	52	75	48	37	70
19/08/2022	19:00-23:00	---	---	60	42	33	60
19/08/2022	23:00-07:00	42	35	45	43	34	45
20/08/2022	07:00-19:00	---	---	75	40	33	70
20/08/2022	19:00-23:00	42	39	60	40	37	60
20/08/2022	23:00-07:00	45	37	45	42	35	45
21/08/2022	07:00-23:00	45	40	60	41	33	60
21/08/2022	23:00-07:00	44	41	45	44	39	45
22/08/2022	07:00-19:00	---	---	75	66	45	70
22/08/2022	19:00-23:00	---	---	60	38	31	60
22/08/2022	23:00-07:00	41	39	45	44	34	45
23/08/2022	07:00-19:00	---	---	75	42	33	70
23/08/2022	19:00-23:00	43	42	60	40	33	60
23/08/2022	23:00-07:00	41	35	45	45	34	45
24/08/2022	07:00-19:00	---	---	75	45	39	70
24/08/2022	19:00-23:00	43	40	60	---	---	60
24/08/2022	23:00-07:00	---	---	45	---	---	45
25/08/2022	07:00-19:00	---	---	75	39	36	70
25/08/2022	19:00-23:00	47	38	60	43	35	60
25/08/2022	23:00-07:00	40	32	45	41	34	45
26/08/2022	07:00-19:00	---	---	75	32	30	70
26/08/2022	19:00-23:00	---	---	60	46	36	60
26/08/2022	23:00-07:00	30	30	45	41	35	45
27/08/2022	07:00-19:00	---	---	75	41	36	70
27/08/2022	19:00-23:00	---	---	60	44	40	60
27/08/2022	23:00-07:00	33	33	45	42	35	45
28/08/2022	07:00-23:00	52	40	60	46	38	60
28/08/2022	23:00-07:00	38	34	45	45	36	45
29/08/2022	07:00-19:00	---	---	75	35	30	70
29/08/2022	19:00-23:00	---	---	60	46	41	60
29/08/2022	23:00-07:00	45	37	45	45	34	45
30/08/2022	07:00-19:00	51	51	75	32	30	70
30/08/2022	19:00-23:00	---	---	60	49	40	60
30/08/2022	23:00-07:00	45	39	45	44	35	45
31/08/2022	07:00-19:00	---	---	75	40	38	70
31/08/2022	19:00-23:00	---	---	60	43	38	60
31/08/2022	23:00-07:00	41	37	45	45	37	45

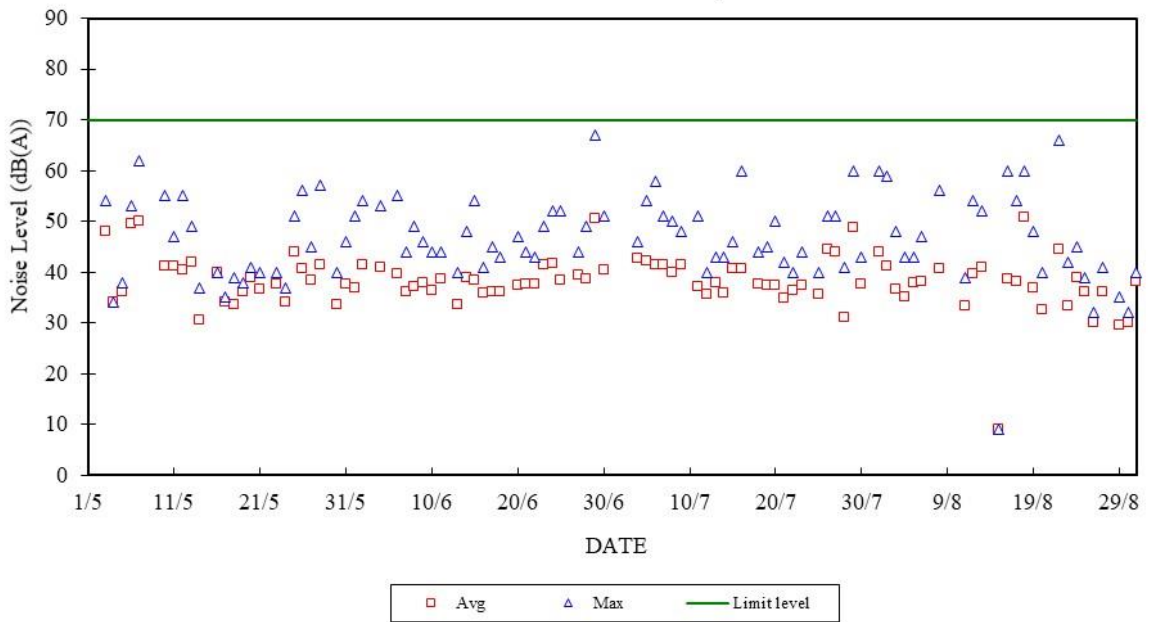
Note:

- a. "---" represents the measured noise monitoring data lower than the established notional background level/discarded under strong wind.
- b. Continuous noise monitoring was also carried out at holidays & evening-time (07:00-23:00 hrs on holidays and 19:00-23:00 hrs on all other days) and night-time (23:00-07:00 hrs of next day).

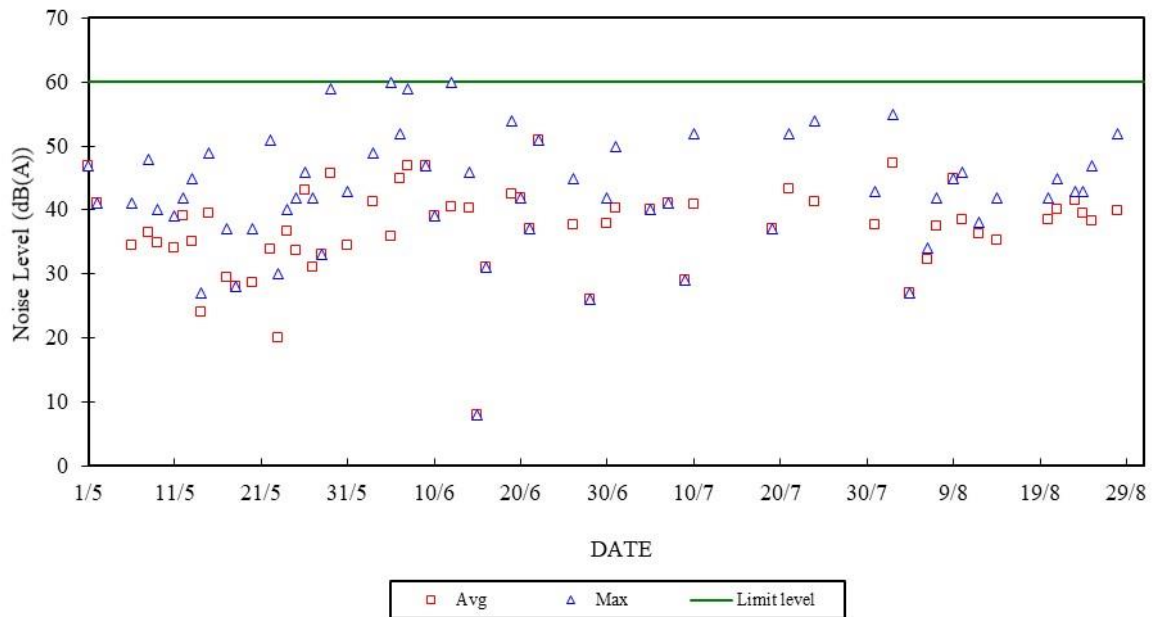
Construction Noise Monitoring in May - August 2022
 NSR at Long Tsai Tsuen/Hung Shing Ye
 07:00-19:00 hrs on Normal Weekdays



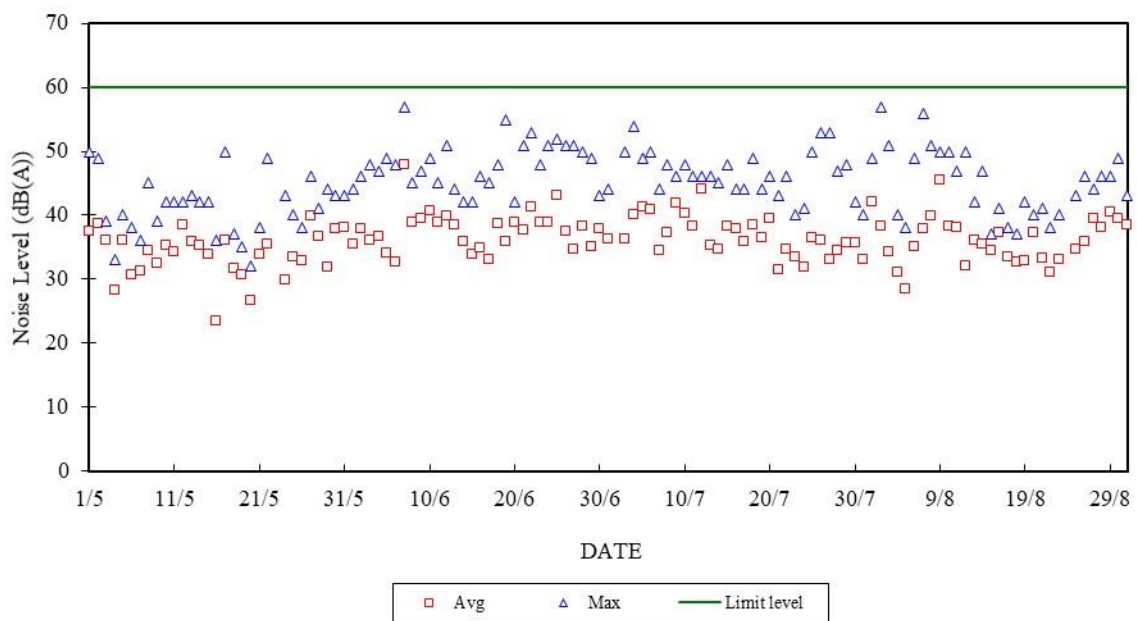
Construction Noise Monitoring in May - August 2022
 NSR at School within Tai Wan San Tsuen
 07:00-19:00 hrs on Normal Weekdays



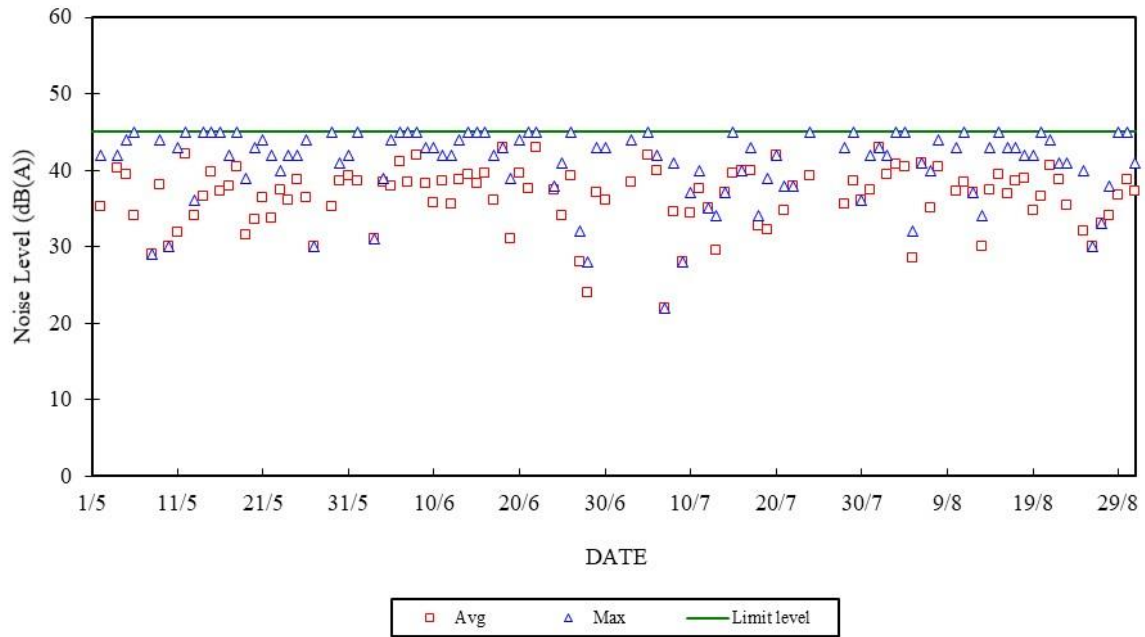
Construction Noise Monitoring in May - August 2022
 NSR at Long Tsai Tsuen/Hung Shing Ye
 07:00-23:00 hrs on Holidays and 19:00-23:00 hrs on All Other Days



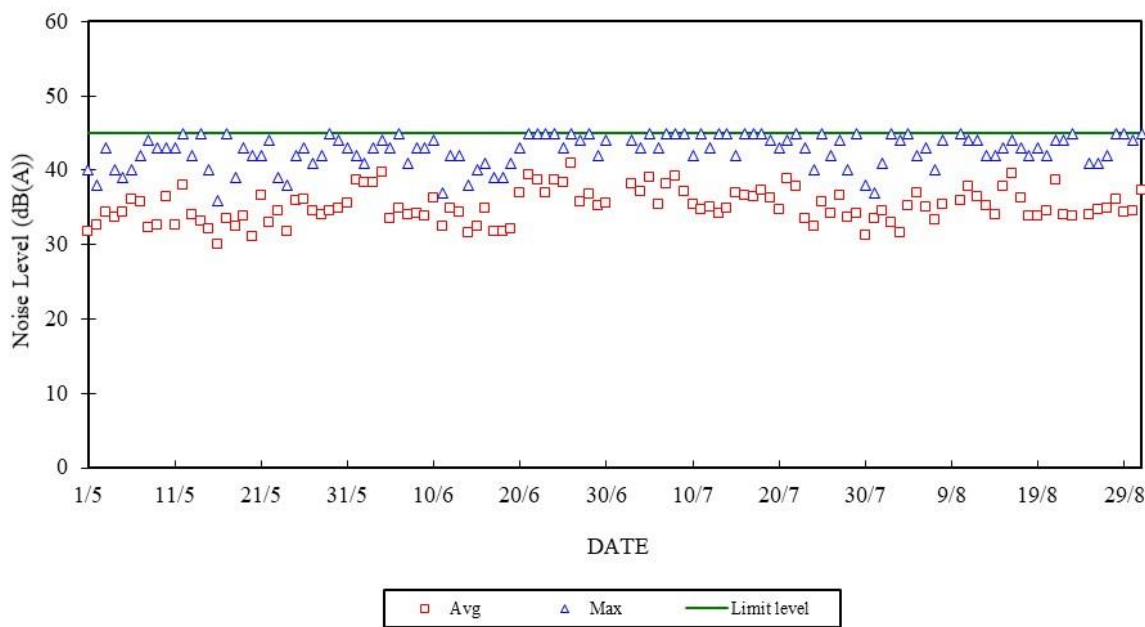
Construction Noise Monitoring in May - August 2022
 NSR at School within Tai Wan San Tsuen
 07:00-23:00 hrs on Holidays and 19:00-23:00 hrs on All Other Days



Construction Noise Monitoring in May - August 2022
NSR at Long Tsai Tsuen/Hung Shing Ye
23:00-07:00 hrs of Next Day



Construction Noise Monitoring in May - August 2022
NSR at School within Tai Wan San Tsuen
23:00-07:00 hrs of Next Day



Appendix F

The QA/QC Procedures and Results

The Hongkong Electric Co., Ltd.
Lamma Power Station Extension
TEOM Continuous Dust Monitor
Data Quality Assurance Log Sheet

Month: August

Year: 2022

Reservoir (AM1)				
Date	Frequency (Hz) (240 - 275)	Operation Mode (Mode 4)	Main Flow (l/min) (2.70 - 3.30)	Bypass Flow (l/min) (12.30 - 15.04)
5/8/2022	270.695	4	2.91	10.31
11/8/2022	270.460	4	2.91	10.31
17/8/2022	270.234	4	2.87	10.31
23/8/2022	269.966	4	2.80	10.31
29/8/2022	269.471	4	2.86	10.31

East Gate (AM2)				
Date	Frequency (Hz) (240 - 275)	Operation Mode (Mode 4)	Main Flow (l/min) (2.70 - 3.30)	Bypass Flow (l/min) (12.30 - 15.04)
5/8/2022	253.317	4	2.99	13.64
11/8/2022	253.163	4	3.06	13.61
17/8/2022	253.020	4	2.88	13.28
23/8/2022	252.822	4	2.77	13.20
29/8/2022	252.514	4	2.72	13.62

Ash Lagoon (AM3)				
Date	Frequency (Hz) (240 - 275)	Operation Mode (Mode 4)	Main Flow (l/min) (2.70 - 3.30)	Bypass Flow (l/min) (12.30 - 15.04)
5/8/2022	257.704	4	2.42	13.68
11/8/2022	257.526	4	2.37	13.68
17/8/2022	258.517	4	3.00	13.67
23/8/2022	258.353	4	3.00	13.68
29/8/2022	258.008	4	3.00	13.67

Maintenance Record			
	Reservoir	East Gate	Ash Lagoon
TEOM Filter Exchange	✓	✓	✓
Clean TSP Inlet	✓	✓	✓
Replace flow in-line filter	✓	✓	✓
Pump Repair			
Leak Check			
Flow audit			
Flow Controller Calibration			
A/C filter cleaning			

Remarks:

Prepared by: Chris Chan

Checked by: HY Chan

The Hongkong Electric Co., Ltd.
Mini Volume Air Sampler Site Visit Log Sheet

Attendance Log

Site Name: Tai Yuen Village (AM4)

Date/Time	Staff Name
15/08/2022 / 10:15	WM TAM

Equipment / Item

Equipment / Item	Serial No. / No.
MINIVOL	5580
Used filter paper no.	MS14
New filter paper no.	MS15

Type of filter: Glass-fibre

- I. Calibration is performed by using Drycal DC-2 Flow Calibrator
5 std. L/min set point is recommended

Before: 5.011
After: 5.011 (No Adjustment)

- II. General Services

- Clean Rotameter: Yes
- Clean / Replace Pump Valves: No
- Clean / Replace Pump Diaphragms: No
- Clean Impaction Inlet: Yes
- Replace Timer Battery Every 6 months: No
- Replace Inlet Filter: Yes

Remarks

N/A

Conducted by: WM TAM

Checked by: SM Hon

The Hongkong Electric Co., Ltd.
Lamma Power Station Extension
Noise Monitoring Station
Daily Calibration Records

Date	Location: Ash Lagoon		Location: Ching Lam	
	Calibration Results	Deviation from Reference (dB)	Calibration Results	Deviation from Reference (dB)
01/08/2022	Passed	0.12	Passed	0.06
02/08/2022	Passed	0.05	Passed	0.01
03/08/2022	Passed	0.11	Passed	0.01
04/08/2022	Passed	0.02	Passed	-0.03
05/08/2022	Passed	0.06	Passed	0.02
06/08/2022	Passed	0.02	Passed	0.05
07/08/2022	Passed	0.02	Passed	0.08
08/08/2022	Passed	0.01	Passed	0.11
09/08/2022	Passed	0.02	Passed	0.02
10/08/2022	Passed	0.01	Passed	0.02
11/08/2022	Passed	0.00	Passed	0.01
12/08/2022	Passed	0.04	Passed	0.03
13/08/2022	Passed	0.04	Passed	0.04
14/08/2022	Passed	0.03	Passed	0.05
15/08/2022	Passed	0.02	Passed	0.08
16/08/2022	Passed	0.02	Passed	0.05
17/08/2022	Passed	0.02	Passed	0.05
18/08/2022	Passed	0.02	Passed	0.05
19/08/2022	Passed	0.02	Passed	0.03
20/08/2022	Passed	0.03	Passed	0.04
21/08/2022	Passed	0.00	Passed	0.05
22/08/2022	Passed	0.05	Passed	0.06
23/08/2022	Passed	0.04	Passed	0.08
24/08/2022	Passed	0.05	Passed	0.01
25/08/2022	Passed	0.02	Passed	0.08
26/08/2022	Passed	0.01	Passed	0.07
27/08/2022	Passed	0.04	Passed	0.08
28/08/2022	Passed	0.03	Passed	0.07
29/08/2022	Passed	0.03	Passed	0.09
30/08/2022	Passed	0.04	Passed	0.11
31/08/2022	Passed	0.02	Passed	0.07

Remarks:

1. The B&K sound level meter at the noise monitoring station has an advanced feature of internal calibration checking (viz. Charge Injection Calibration (CIC)). CIC is a B&K patented method for in situ verification of the integrity of the entire sound measurement chain (including microphone, preamplifier and cabling).
2. The acceptance criterion of deviation from reference is ± 0.5 dB.

Appendix G Event/Action Plans

Table G.1 Event and Action Plans for Air Quality

Event	Monitoring		Action	
	ET Leader	IEC	Engineer	Contractor
Action Level				
Exceedance of one sample	Identify source Inform Engineer and IEC verbally Repeat measurement to confirm finding	Check monitoring data submitted by ET and advise Engineer.	Notify Contractor Checking monitoring data and contractor's working methods	Rectify any unacceptable practice amend any working methods if appropriate
Exceedance of two or more consecutive samples	Identify source Inform Engineer and IEC verbally Repeat measurement to confirm finding Increase monitoring frequency Discuss with Engineer and Contractor on remedial actions required If exceedance continues, arrange meeting with Engineer If exceedance stops, discontinue additional monitoring	Check monitoring data submitted by ET and advise Engineer. Provide feedback to the Engineer on the remedial actions proposed by the ET / Contractor Advise Engineer on the effectiveness of the proposed remedial measures Verify the implementation of the remedial measures	Confirm receipt of notification of failure in writing Notify contractor Checking monitoring data and contractor's working methods Discuss proposed remedial actions with the ET and Contractor Ensure remedial actions properly implemented	Submit proposals for remedial actions to Engineer within 3 working days of notifications Implement the agreed proposals Amend proposal if appropriate
Limit level				
Exceedance of one sample	Repeat measurement to confirm finding. Identify the source(s) of the impact. If the exceedance is found to be valid and due to the Construction works, verbally advise the Contractor, Engineer and IEC, and inform the EPD of the exceedance, as soon as practicable. Increase monitoring frequency to daily Assess the effectiveness of the contractor's remedial actions and keep Engineer, IEC and EPD informed of the results	Check monitoring data submitted by ET and advise Engineer Provide feedback to the Engineer on the remedial actions proposed by the ET / Contractor Advise Engineer on the effectiveness of the proposed remedial measures Verify the implementation of the remedial measures	Confirm receipt of notification of failure in writing Notify Contractor Checking monitoring data and Contractor's working method Discuss with ET and Contractor on remedial actions to be provided Ensure remedial measures properly implemented	Take immediate action to avoid further exceedance Submit proposals for remedial actions to Engineer within 3 working days of notifications Implement the agreed proposals Amend proposal if appropriate
Exceedance of two or more	Identify source	Provide feedback to the Engineer on the remedial actions proposed by the	Confirm receipt of notification of	Take immediate action to

Event	Monitoring			Action		
	ET Leader	IEC	Engineer	Contractor		
consecutive samples	<p>If the exceedance is found to be valid and due to the construction works, verbally advise the Contractor, Engineer and IEC, and inform the EPD of the exceedance as soon as practicable.</p> <p>Repeat measurement to confirm finding</p> <p>Increase monitoring frequency to daily</p> <p>Carry out analysis of Contractor's working procedures to determine possible mitigation to be implemented</p> <p>Arrange meeting with Engineer and Contractor to discuss the remedial actions to be taken</p> <p>If exceedance stops, discontinue additional monitoring</p>	<p>ET / Contractor</p> <p>Advise Engineer on the effectiveness of the proposed remedial measures</p> <p>Verify the implementation of the remedial measures</p>	<p>failure in writing</p> <p>Checking monitoring data and Contractor's working methods</p> <p>Notify Contractor</p> <p>Discuss proposed remedial actions with ET and Contractor</p> <p>Ensure remedial measures properly implemented</p> <p>If exceedance continues, consider what portion of the work is responsible and instruct the Contractor to stop the portion of work until the exceedance is abated</p>	<p>avoid further exceedance</p> <p>Submit proposals for remedial actions to Engineer within 3 working days of notifications</p> <p>Implement the agreed proposals</p> <p>Resubmit proposals if problem still not under control</p> <p>Stop the relevant portion of works as determined by the Engineer until the exceedance is abated</p>		

Table G.2 Event and Action Plans for Construction Noise

Exceedance	ET Leader	IEC	Engineer	Contractor
Action Level	Undertake noise measurement/check monitoring data to establish validity of complaint.	Review the analysed results submitted by the ET.	Notify Contractor of the complaint if proven.	Submit proposals for remedial actions to Engineer.
	If the complaint is valid, inform Engineer and IEC verbally.	Review the remedial measures proposed by the Contractor and advise the Engineer and ET accordingly.	Check Contractor's working methods and advise IEC and ET accordingly.	Amend proposals if required by the Engineer.
	Identify the source(s) of the noise.	Verify the implementation of the remedial measures.	Remind the Contractor of his contractual obligations and discuss remedial actions.	Implement the remedial actions immediately upon instruction from the Engineer.
	Discuss remedial actions required with Contractor and Engineer.		Keep the Contractor informed of the efficacy of remedial actions.	Liaise with the Engineer to optimise the effectiveness of the agreed mitigation.
	Increase manual monitoring frequency to assess efficacy of remedial measures.			
	If exceedance continues, review implementation of appropriate mitigation measures.			
Limit Level	Repeat manual measurement/check monitoring data to confirm findings.	Agree potential remedial actions with Engineer, ET and Contractor.	Notify Contractor of exceedance.	Take immediate action to avoid further exceedance.
	Identify the source(s) of the impact. If the exceedance is found to be valid and due to the Construction works, verbally advise the Contractor, Engineer and IEC, and inform the EPD of the exceedance, as soon as practicable.	Review Contractor's remedial actions / measures to ensure their effectiveness and advise the Engineer and ET accordingly.	Check Contractor's working methods and advise IEC and ET accordingly. Discuss with Contractor the remedial actions to be implemented.	Submit proposals for remedial actions to Engineer. Amend proposals if required by the Engineer.
	Discuss remedial actions required with Engineer.	Verify the implementation of the remedial measures	Keep the Contractor informed of the efficacy of remedial actions. If the exceedance continues, consider what portion of the work is responsible and instruct the Contractor to stop the portion of work until the exceedance is abated	Implement remedial actions immediately upon instruction from the Engineer. If the exceedance continues, consider what portion of the work is responsible and, as instructed by the Engineer, stop the portion of work until the exceedance is abated
	Increase manual monitoring frequency to assess efficacy of remedial measures.			

Table G.3 Event and Action Plans for Water Quality

Exceedance	ET Leader	IEC	Engineer	Contractor
Action level exceeded on one sampling day	Verbally inform the Contractor, and IEC. Repeat in-situ measurement to confirm findings; Identify source(s) of impact; Check monitoring data, all plant, equipment and Contractor's working methods; Discuss mitigation measures with Engineer and Contractor; Repeat measurement on next day of exceedance.	Provide feedback to the Engineer on the remedial actions proposed by the ET / Contractor Advise Engineer on the effectiveness of the proposed remedial measures Verify the implementation of the remedial measures	Discuss with Contractor the proposed mitigation measures; Make agreement on the mitigation measures to be implemented; Assess the effectiveness of the implemented mitigation measures.	Inform the Engineer and confirm notification of the non-compliance in writing; Rectify unacceptable practice; Check all plant and equipment; Consider changes of working methods; Propose and discuss mitigation measures with Engineer; Implement the agreed mitigation measures.
Action level exceeded on more than one consecutive sampling day	Repeat in-situ measurements to confirm findings; Identify source(s) of impact; Inform Contractor and IEC; Check monitoring data, all plant, equipment and Contractor's working methods; Discuss mitigation measure with Engineer and Contractor; Ensure mitigation measures are implemented; Prepare to increase the monitoring frequency to daily; Repeat measurement on next day of exceedance.	Provide feedback to the Engineer on the remedial actions proposed by the ET / Contractor Advise Engineer on the effectiveness of the proposed remedial measures Verify the implementation of the remedial measures	Discuss with ET and Contractor on the proposed mitigation measures; Make agreement on the mitigation measures to be implemented; Assess the effectiveness of the implemented mitigation measures.	Inform the Engineer and confirm notification of the non-compliance in writing; Rectify unacceptable practice; Check all plant and equipment; Consider changes of working methods; Propose mitigation measures to Engineer within 3 working days and discuss with ET and Engineer; Implement the agreed mitigation measures.
Limit level exceeded on one sampling day	Verbally inform the Contractor, IEC and the EPD of the exceedance; Repeat in-situ measurement to confirm findings; Identify source(s) of impact; Check monitoring data, all plant,	Provide feedback to the Engineer on the remedial actions proposed by the ET / Contractor Advise Engineer on the effectiveness of the proposed remedial measures Verify the implementation of the remedial measures	Discuss with Contractor on the proposed mitigation measures; Request Contractor to critically review the working methods; Make agreement on the mitigation measures to be implemented; Assess the effectiveness of the	Inform the Engineer and confirm notification of the non-compliance in writing; Rectify unacceptable practice; Check all plant and equipment; Consider changes of working methods; Propose mitigation measures to Engineer

Exceedance	ET Leader	IEC	Engineer	Contractor
	<p>equipment and Contractor's working methods;</p> <p>Discuss mitigation measure with Engineer and Contractor;</p> <p>Ensure mitigation measures are implemented;</p> <p>Increase the monitoring frequency to daily until no exceedance of Limit level.</p>		<p>implemented mitigation measures.</p>	<p>within 3 working days and discuss with Engineer;</p> <p>Implement the agreed mitigation measures.</p>
<p>Limit level exceeded by more than one consecutive sampling day</p>	<p>Repeat in-situ measurement to confirm findings;</p> <p>Identify source(s) of impact;</p> <p>Inform Contractor, IEC and EPD;</p> <p>Check monitoring data, all plant, equipment and Contractor's working methods;</p> <p>Discuss mitigation measure with Engineer and Contractor;</p> <p>Ensure mitigation measures are implemented;</p> <p>Increase the monitoring frequency to daily until no exceedance of Limit level for two consecutive days.</p>	<p>Provide feedback to the Engineer on the remedial actions proposed by the ET / Contractor</p> <p>Advise Engineer on the effectiveness of the proposed remedial measures</p> <p>Verify the implementation of the remedial measures</p>	<p>Discuss with Contractor on the proposed mitigation measures;</p> <p>Request Contractor to critically review the working methods;</p> <p>Make agreement on the mitigation measures to be implemented;</p> <p>Assess the effectiveness of the implemented mitigation measures;</p> <p>Consider and instruct, if necessary, the Contractor to slow down or to stop all or part of the marine works until no exceedance of the Limit Level.</p>	<p>Inform the Engineer and confirm notification of the non-compliance in writing;</p> <p>Rectify unacceptable practice;</p> <p>Check all plant and equipment; Consider changes of working methods;</p> <p>Propose mitigation measures to Engineer within 3 working days and discuss with Engineer;</p> <p>Implement the agreed mitigation measures..</p> <p>As directed by the Engineer, to slow down or to stop all or part of the marine work</p>

Appendix H Summary of Site Audit Findings

L12 Civil and Building Works

Dates of Inspection: 2/8/2022, 9/8/2022, 16/8/2022, 23/8/2022 and 30/8/2022.

Summary of Findings

General

- No environmental deficiency identified.

Air Quality

- No environmental deficiency identified.

Noise

- No environmental deficiency identified.

Water Quality

- No environmental deficiency identified.

Waste Management

- No environmental deficiency identified.

L12 Mechanical, Electrical, Instrumentation & Control Erection Works

Dates of Inspection: 4/8/2022, 11/8/2022, 18/8/2022 and 25/8/2022.

Summary of Findings

General

- No environmental deficiency identified.

Air Quality

- No environmental deficiency identified.

Noise

- No environmental deficiency identified.

Water Quality

- No environmental deficiency identified.

Waste Management

- No environmental deficiency identified.

Summary of EMIS

Power Station – (Part B of EIA Report)

Construction Phase Mitigation Measures and their Implementation

EM&A Log Ref.	Mitigation Measures	Implementation Status
	AIR QUALITY	
A1	For general construction works, the dust control measures stipulated under the Air Pollution Control (Construction Dust) Regulation shall be complied with, such as: <ul style="list-style-type: none"> the haul roads shall be sprayed with water to keep the entire road surface wet. the load carried by vehicle shall be covered by impervious sheeting to ensure no leakage of dusty materials from the vehicle. the heights from which fill materials are dropped shall be controlled to a practical level to minimise the fugitive dust arising from unloading. 	C C C
A2	For the concrete batching plant, the following control measures are recommended: <ul style="list-style-type: none"> loading, unloading, handling, transfer or storage of any dusty materials shall be carried out in a totally enclosed system. The materials which may generate airborne dust emissions shall be wetted by water spray system. All receiving hoppers shall be enclosed on three sides up to 3m above unloading point. All conveyor transfer points shall be totally enclosed. 	N/A N/A N/A N/A
	WATER QUALITY	
B1	Silt curtains shall be installed on the eastern, southern and north western sides of the reclamation site during dredging for the reclamation construction. This is a required mitigation measure for the construction works and shall be implemented prior to the commencement of bulk dredging. **	N/A
B3	As a necessary operational constraint combined bulk dredging and sand filling for site formation shall not be permitted at any time. In addition, sand filling for site platform shall take place behind constructed sea walls which pierce the water surface. **	N/A
B4	HEC shall ensure design to divert all storm drains away from Hung Shing Ye Bay. **	N/A
B5	Sand fill for the rubble mound seawalls shall be placed by controlled pumping down the trailer arm. **	N/A
B6	EM&A shall confirm the acceptability of any impacts during construction and should any unacceptable impacts be found then one or more of the following mitigation measures shall be implemented: ** <ul style="list-style-type: none"> reducing the number of dredgers working at any one time; reducing the rate of working of the dredgers; temporary suspension of operations; phasing of the works so that dredging / filling is only undertaken at certain stages of the tidal cycle. 	N/A

EM&A Log Ref.	Mitigation Measures	Implementation Status
WASTE MANAGEMENT		
E1	HEC to submit a Waste Management Plan for the construction phase to EPD. The Plan shall be verified by the IEC and shall describe the arrangements for avoidance, reuse, recovery and recycling, storage, collection, treatment and disposal of different categories of waste to be generated from the construction activities and shall take into account the recommendations of the EIA report.	C
<i>Dredging Waste</i>		
E2	All vessels for marine transportation of dredged sediment shall be fitted with tight fitting seals to their bottom openings to prevent leakage of materials. In addition, loading of barges and hoppers shall be controlled to prevent splashing of dredged material into the surrounding water, and barges or hoppers should under no circumstances be filled to a level which shall cause the overflowing of materials or polluted water during loading or transportation**	N/A
<i>Storage, Collection and Transport of Waste</i>		
E3	<ul style="list-style-type: none"> Minimise windblown litter and dust during transportation by either covering trucks or transporting wastes in enclosed containers. 	C
	<ul style="list-style-type: none"> Obtain the necessary waste disposal permits from the appropriate authorities, if they are required, in accordance with the Waste Disposal Ordinance (Cap.354), Waste Disposal (Chemical Waste) (General) Regulation (Cap.354), the Crown Land Ordinance (Cap 28), Dumping at Sea Ordinance (Cap 466) and Work Branch Technical Circular No. 22/92, Marine Disposal of Dredged Mud. 	C
	<ul style="list-style-type: none"> Disposal of waste at Licensed sites; 	C
	<ul style="list-style-type: none"> Develop procedures such as a ticketing system to facilitate tracking of marine mud and chemical waste, and to ensure that illegal disposal does not occur; 	C
	<ul style="list-style-type: none"> Segregate and sort the waste materials into 3 categories: <ul style="list-style-type: none"> public fill (e.g. concrete and rubble) for re-use on-site or disposal at a public filling area; re-use and/or recycling waste (e.g. steel and other metals); waste which cannot be re-used and/or recycled (e.g. wood, glass and plastic) for landfill disposal. The sorting process shall be carefully monitored to avoid missing of the 3 categories. Different types of wastes shall be stockpiled and stored in different containers or skips to enhance re-use or recycling of materials and their proper disposal. Maintain records of the quantities of wastes generated and disposed off-site for each category of waste. 	C
E4	Chemical waste that is produced, as defined by Schedule 1 of the Waste Disposal (Chemical Waste) (General) Regulation, shall be handled in accordance with the Code of Practice on the Packaging, Handling and Storage of Chemical Wastes	C
LAND CONTAMINATION		
F1	No land Contamination mitigation measures are required during the construction phase.	N/A
MARINE ECOLOGY		

EM&A Log Ref.	Mitigation Measures	Implementation Status
G1	All percussive piling works shall be conducted on reclaimed land to avoid noise impact to marine mammals**	N/A
G2	All construction related vessels shall approach the extension site from the north and via the East Lamma Channel to avoid disturbance to the finless porpoise**	N/A
G3	Rubble mound seawall to the south and west edges of the reclamation to enhance recolonisation of marine organisms**	N/A
G4	Artificial Reefs of a volume not less than 400 m ³ shall be deployed in a location to be decided upon consultation with the Director of Agriculture and Fisheries to serve the purpose of an Additional Habitat Enhancement Measure.**	N/A
FISHERIES		
H1	No Fisheries-specific mitigation measures are required during the construction phase.	N/A
RISK ASSESSMENT		
I1	No risk mitigation measures are required during the construction phase.	N/A

Remarks:

- ** - No dredging and reclamation work would be involved for L12 construction
- C - Compliance with mitigation measure
- NC - Non-compliance with mitigation measure
- N/A - Not Applicable

Contract No. 19/83002 Lamma Power Station Extension Civil and Building Works for Unit L12

Master Programme

ID	Task Name	Duration	Start	Finish	Sep	Oct	Nov
1	KEY DATES & MILESTONES	1123 days	Fri 4/12/20	Sun 31/12/23			
2	Contract Period	1123 days	Fri 4/12/20	Sun 31/12/23			
3	Deferred Work Completion Key Dates	784 days	Mon 8/11/21	Sun 31/12/23			
4	Substantial Completion of the Whole Contract Works (1123 Days)	0 days	Sun 31/12/23	Sun 31/12/23			
5	SITE POSSESSION DATES	513 days	Fri 4/12/20	Sun 1/5/22			
6	Site Possession Date as phased site possession plan and PS1.4.2	0 days	Fri 4/12/20	Fri 4/12/20			
7	Site Possession Date as phased site possession plan and PS1.4.2	0 days	Fri 1/1/21	Fri 1/1/21			
8	Site Possession Date as phased site possession plan and PS1.4.2	0 days	Sat 1/5/21	Sat 1/5/21			
9	Site Possession Date as phased site possession plan and PS1.4.2	0 days	Fri 1/10/21	Fri 1/10/21			
10	Site Possession Date as phased site possession plan and PS1.4.2	0 days	Fri 1/4/22	Fri 1/4/22			
11	Site Possession Date as phased site possession plan and PS1.4.2	0 days	Sun 1/5/22	Sun 1/5/22			
12	COMPLETION DATES as per PS1.4.2 Time for Completion	537 days	Thu 30/9/21	Tue 21/3/23			
13	Section A1 (i) - Area south of L12 MSB and L12 HRSG from GL12-F eastwards leading to Chimney Road at Area F1 & F2	0 days	Thu 30/9/21	Thu 30/9/21			
14	Section A1 (ii) - Supporting structures for overhead cranes of L12 MSB including the associated roof structure except the roof deferred works	0 days	Mon 1/11/21	Mon 1/11/21			
15	Section A2 (i) External Works including CW Inlet Culvert at Area F8A	0 days	Mon 10/1/22	Mon 10/1/22			
16	Section A2 (ii) External Works including CW Inlet Culvert at Area F8B	0 days	Thu 31/3/22	Thu 31/3/22			
17	Section A2 (iii) External Works including CW Inlet Culvert at Area F8C	0 days	Fri 11/3/22	Fri 11/3/22			
18	Section B1 - Area south of L12 MSB from GL12-F westwards leading to Station Road at Area F3	0 days	Wed 15/12/21	Wed 15/12/21			
19	Section B2 (i) - Southern Part of L12 HRSG areas and its surrounding refer to Area F6B as shown in drawing no 553/03/2040 including the foundations for Gas Exhaust Duct	0 days	Thu 30/9/21	Thu 30/9/21			
20	Section B2 (ii) - Remaining northern part of L12 HRSG area and its surrounding at Area F6A and F6C	0 days	Mon 15/11/21	Mon 15/11/21			
21	Section B2 - (iii) L12 Turbo Block foundation including the L12 MSB ground floor together with the equipment foundations between GL 12-F to 12-H and 12-1 to 12-6 for the installation of power generator, air inlet duct and lube oil reservoir	0 days	Mon 28/2/22	Mon 28/2/22			
22	Section B2 - (iv) G/F of L12 MSB including the Condenser Pit, Circulating Water Pipe Pit and equipment foundations between GL 12-B to 12-C and 12-1 to 12-6 for the installation of condenser	0 days	Wed 15/12/21	Wed 15/12/21			
23	Section C - (i) Roads and external grounds surrounding L12 MSB and L12 HRSG in addition to the southern & eastern areas mentioned above in Area F5	0 days	Sat 15/1/22	Sat 15/1/22			
24	Section C - (ii) Whole of L12 MSB including the pipe and cable rack along south façade of L12 MSB with all underground utilities at Area F4 including C.W. Inlet and Outlet Culvert except the deferred works	0 days	Thu 31/3/22	Thu 31/3/22			
25	Section C - (iii) Link Bridge between L11 and L12 MSB including their associated A&A at L11 MSB	0 days	Sun 10/4/22	Sun 10/4/22			
26	Section D - (i) Microwave Antenna Room and Chimney Windshiled for the installation of microwave equipment and antenna	0 days	Fri 10/6/22	Fri 10/6/22			
27	Section D (ii) - No. 5 Chimney with L12 Steel Flue liner	0 days	Tue 21/3/23	Tue 21/3/23			
28	Section E (i) Tx Room of Administration and Control Building	0 days	Sun 31/10/21	Sun 31/10/21			
29	Section E (ii) - G/F,1/F, 2/F & Hoisting Well of Admin. & Control Building	0 days	Mon 28/2/22	Mon 28/2/22			
30	Section E (iii) - Whole of Admin. And Control Building	0 days	Tue 31/5/22	Tue 31/5/22			
31	Section F (i) - Gas Receiving Station and L12 Gas Receiving Station Equipment Room (GRS) Area Extension at Area F14	0 days	Wed 30/11/22	Wed 30/11/22			
32	Section F (ii) - Pipe and Cable rack and external work at Area F9A and F9B	0 days	Tue 31/5/22	Tue 31/5/22			
33	Section F (iii) - No. 5 CW Equipment Room, pipe and cable rack, external works at Area F10	0 days	Wed 31/8/22	Wed 31/8/22			
34	Section G (i) - External Work surrounding Area F11	0 days	Wed 26/10/22	Wed 26/10/22			
35	Section G (ii) - External Works at Area F12 & F13	0 days	Fri 30/9/22	Fri 30/9/22			
36	Section G (iii) - FS Modification works along South Seafrost Road at Area F15	0 days	Fri 30/9/22	Fri 30/9/22			
37	Section G (iv) - 275kV cable trenches and External Works at Area F16	0 days	Fri 30/9/22	Fri 30/9/22			
38	Section G (v) - Shunt Reactor Compound and External Works at Area F17	0 days	Fri 30/9/22	Fri 30/9/22			
39	Section G (vi) - 275kV cable trenches and External Works at Area F18	0 days	Wed 1/6/22	Wed 1/6/22			
40	Section G (vii) - Flood Wall at No. 4 CW Intake Area along HUA at Area F20A	0 days	Sun 8/5/22	Sun 8/5/22			
41	Section G (viii) - Flood wall at No. 5 CW Intake Area along HUA at Area F20B	0 days	Fri 30/9/22	Fri 30/9/22			
42	Section G (ix) - Bund wall modification works at South Seafrost Road at Area F21	0 days	Fri 15/10/21	Fri 15/10/21			
43	Section G (x) - DAX Cable Diversion Works (from Part I to Part IV)	0 days	Sat 31/12/22	Sat 31/12/22			
44	Section H - All remaining works shall be completed for reporting completion to BD and ready for OP inspection	0 days	Tue 28/2/23	Tue 28/2/23			
45	GENERAL & PRELIMINARY	228 days	Fri 4/12/20	Mon 19/7/21			
46	First Mobilization	18 days	Fri 4/12/20	Mon 21/12/20			
47	Set up Temporary Site Office and Welfare Facilities	90 days	Tue 22/12/20	Sun 21/3/21			
48	Permit Applications & Statuary Submissions	120 days	Mon 22/3/21	Mon 19/7/21			
49	Existing Utilities scanning & Excavation Permit	45 days	Tue 22/12/20	Thu 4/2/21			
50	Tower Crane erections	60 days	Sun 27/12/20	Wed 24/2/21			
51	TECHNICAL SUBMISSION AND APPROVAL	314 days	Thu 10/12/20	Wed 20/10/21			
52	BD Approval & Consent (If required)	0 days	Thu 10/12/20	Thu 10/12/20			
53	Submission and Approval of Master Programme	14 days	Fri 11/12/20	Thu 24/12/20			
54	Work Execution Overall Plan submission & approval	14 days	Fri 11/12/20	Thu 24/12/20			
55	Material Submissions and approval	300 days	Fri 25/12/20	Wed 20/10/21			
56	Method Statement submission and approval	300 days	Fri 25/12/20	Wed 20/10/21			
57	BIM Model, CSD & CBWD Submission & approval	120 days	Fri 25/12/20	Fri 23/4/21			
58	Structure Steelwork Connection Design Submission & BD approval	45 days	Tue 29/12/20	Thu 11/2/21			
59	Structure Steelwork Shop Drawing & Approval	30 days	Fri 12/2/21	Sat 13/3/21			
60	Metal Cladding, louvre & windows submission & BD approval	45 days	Tue 29/12/20	Thu 11/2/21			
61	Metal Cladding, louvre & windows shop drawing submission	45 days	Fri 12/2/21	Sun 28/3/21			
62	Order, Off Site Fabrication and Delivery (S. Steel & Cladding & louvres)	120 days	Mon 29/3/21	Mon 26/7/21			
63	ELS Submission and BD approval	90 days	Fri 11/12/20	Wed 10/3/21			
64	No. 5 Chimney windshield temporary work submission, approval & fabrication	60 days	Fri 11/12/20	Mon 8/2/21			
65	Steel Flue Assessment Report and Design Drawings submission & approval	60 days	Tue 9/2/21	Fri 9/4/21			
66	Folding Shutters Shop Drawing Submission & Approval	30 days	Thu 11/2/21	Fri 12/3/21			
67	Fabrication & Delivery of Folding Shutters	180 days	Sat 13/3/21	Wed 8/9/21			
68	Sewage Pump System Design submission & approval	45 days	Tue 23/2/21	Thu 8/4/21			
69	Fabrication & Delivery of Sewage Pump	180 days	Fri 9/4/21	Tue 5/10/21			
70	Other material submission & approval & delivery	180 days	Sat 24/4/21	Wed 20/10/21			
71	Other material submission & approval & delivery	180 days	Sat 24/4/21	Wed 20/10/21			
72	CONSTRUCTION	1123 days	Fri 4/12/20	Sun 31/12/23			
73	Coordination with the Employer's Specialist Contractors	562 days	Fri 15/1/21	Sat 30/7/22			
74	Installation of Puddle Pipes at C.W. outlet Culvert	7 days	Mon 22/3/21	Sun 28/3/21			
75	Installation of Puddle Pipes at C.W. Inlet Culvert	7 days	Thu 27/5/21	Wed 2/6/21			
76	Template setting at L12 Turbo Block Foundation	45 days	Tue 16/1/21	Thu 30/12/21			
77	Template setting of holding down bolts at HRSG column base	45 days	Fri 15/1/21	Sun 28/2/21			
78	I-beam / channel base installation on top of transformer foundations at Transformer Area	45 days	Tue 1/6/21	Thu 15/7/21			
79	Overhead crane erection at turbine hall using access through a temporary opening at L12 MSB roof between GL12-G to 12-H and 12-2 to 12-6	38 days	Mon 1/11/21	Wed 8/12/21			
80	Condenser assembly and erection using access through a temporary façade opening at L12 MSB below 1/F along GL 12-6 from GL12-B to 12-C including a clear space below 1/F between GL 12-B to 12-C	122 days	Thu 16/12/21	Sat 16/4/22			
81	Installation of power train equipment including air inlet duct using access through a temporary façade opening at L12 MSB below 1/F along GL 12-6 from GL12-F to 12-H including a clear space below 1/F of the above area	121 days	Fri 1/4/22	Sat 30/7/22			
82	Installation of embedded materials such as holding down bolts for equipment foundations - Commencement	0 days	Thu 15/4/21	Thu 15/4/21			
83	Section A1 (i) - Area south of L12 MSB and L12 HRSG from GL12-F eastwards leading to Chimney Road at Area F1 & F2	301 days	Fri 4/12/20	Thu 30/9/21			
84	Area Possession & Clearance	30 days	Fri 4/12/20	Sat 2/1/21			
85	Subletting / Fabrication / Delivery (both for Area F1 and Area F2)	60 days	Sun 17/1/21	Wed 17/3/21			
86	Excavation for CW Inlet Culvert (Type D Construction Area)	14 days	Tue 1/6/21	Mon 14/6/21			
87	Installation CW Inlet Culvert pipe	70 days	Tue 15/6/21	Mon 23/8/21			
88	Backfill	7 days	Tue 24/8/21	Mon 30/8/21			
89	Construction UG Utilities 2m deep below further surface	21 days	Tue 31/8/21	Mon 27/9/21			
90	Temporary Paving and handover for plant erection	3 days	Tue 28/9/21	Thu 30/9/21			
91	Section A1 (ii) - Supporting structures for overhead cranes of L12 MSB including the associated roof structure except the roof deferred works	333 days	Fri 4/12/20	Mon 1/11/21			
92	Area Possession & Clearance	45 days	Fri 4/12/20	Sun 17/1/21			
93	Subletting / Fabrication / Delivery	210 days	Tue 23/2/21	Mon 20/9/21			
94	Complete structural steel erection	0 days	Tue 19/10/21	Tue 19/10/21			
95	Install Crane Girders	11 days	Tue 12/10/21	Fri 29/10/21			
96	Construction of roof slab (except defer work)	14 days	Tue 12/10/21	Mon 1/11/21			
97	Touch up and handover for install overhead cranes	3 days	Sat 30/10/21	Mon 1/11/21			
98	Section A2 (i) External Works including CW Inlet Culvert at Area F8A	403 days	Fri 4/12/20	Mon 10/1/22			
99	BD consent for Sheetpile installation	30 days	Fri 4/12/20	Sat 2/1/21			
100	Subletting / Fabrication / Delivery (both for Area F8A-F8B)	30 days	Fri 18/12/20	Sat 16/1/21			
101	Area Possession & Clearance	14 days	Sat 2/1/21	Fri 15/1/21			
102	Install Sheet pile	55 days	Sat 16/1/21	Thu 11/3/21			
103	Installation of Additional sheet Pile at South of area F8A	7 days	Sat 17/4/21	Fri 23/4/21			
104	BD Consent for ELS	28 days	Sat 24/4/21	Fri 21/5/21			
105	ELS and install CW Inlet Pipe (NW to N direction) (Assume flexible joint deliver in Sep 2021)	100 days	Fri 16/7/21	Sat 23/10/21			
106	Construction of Thrust Box & Manholes,etc	15 days	Thu 16/9/21	Thu 30/9/21			
107	Backfill, UG Utilities and Road Paving	79 days	Sun 24/10/21	Mon 10/1/22			
108	Section A2 (ii) External Works including CW Inlet Culvert at Area F8B	483 days	Fri 4/12/20	Thu 31/3/22			
109	Area Possession & Clearance	30 days	Mon 1/3/21	Tue 30/3/21			
110	BD consent for Sheetpile installation	30 days	Fri 4/12/20	Sat 2/1/21			
111	Install Sheet pile	90 days	Fri 2/4/21	Wed 30/6/21			
112	BD Consent for ELS	28 days	Thu 1/7/21	Wed 28/7/21			
113	ELS and install CW Inlet Pipe	100 days	Thu 29/7/21	Fri 5/11/21			
114	Construction of Thrust Box & Manholes,etc	15 days	Wed 1/9/21	Wed 15/9/21			
115	Backfill, UG Utilities and Road Paving	146 days	Sat 6/11/21	Thu 31/3/22			
116	Section A2 (iii) External Works including CW Inlet Culvert at Area F8C	365 days	Fri 12/3/21	Fri 11/3/22			
117	Area Possession & Clearance	30 days	Fri 12/3/21	Sat 10/4/21			
118	Subletting / Fabrication / Delivery (for Area F8C)	60 days	Fri 12/3/21	Mon 10/5/21			
119	BD consent for Sheetpile installation	30 days	Tue 13/4/21	Wed 12/5/21			
120	Install Sheet pile	62 days	Thu 13/5/21	Tue 13/7/21			
121	BD Consent for ELS	35 days	Wed 14/7/21	Tue 17/8/21			
122	ELS and install CW Inlet Pipe (including soil nail installation under 19/83014)	76 days	Wed 18/8/21	Thu 20/1/22			
123	Construction of Thrust Box & Manholes,etc	30 days	Fri 21/1/22	Sat 19/2/22			
124	Backfill, UG Utilities and Road Paving	20 days	Sun 20/2/22	Fri 11/3/22			
125	Section B1 - Area south of L12 MSB from GL12-F westwards leading to Station Road at Area F3	377 days	Fri 4/12/20	Wed 15/12/21			
126	Area Possession & Clearance	30 days	Fri 4/12/20	Sat 2/1/21			
127	Subletting / Fabrication / Delivery	120 days	Fri 25/12/20	Fri 23/4/21			
128	Complete CW Pipe Installation & Thrust box	45 days	Tue 25/5/21	Thu 8/7/21			
129	Backfill	30 days	Fri 9/7/21	Sat 7/8/21			
130	Construction of Storm Drain & Manholes	67 days	Mon 20/9/21	Thu 25/11/21			
131	Temp Paving and handover for Condenser Move in	20 days	Fri 26/11/21	Wed 15/12/21			

Contract No. 19/83002 Lamma Power Station Extension Civil and Building Works for Unit L12

Master Programme

ID	Task Name	Duration	Start	Finish	Sep	Oct	Nov
136	Excavation & Construct Pile Caps & Tie Beams & Piers	86 days	Mon 8/3/21	Thu 19/8/21			
137	Installation of Pipe Pile for HRSG foundation (VO)	48 days	Thu 25/3/21	Tue 11/5/21			
138	Construction HRSG & Gas Duct foundations	112 days	Fri 7/5/21	Fri 3/9/21			
139	Construction of HRSG Equipment Room incl. ABWF & BS (except T&C)	64 days	Tue 4/5/21	Thu 30/9/21			
140	Construction underground utilities within HRSG	55 days	Mon 19/7/21	Sat 11/9/21			
141	Backfill & Construction on-grade slabs & RC plinths on top	14 days	Fri 30/7/21	Mon 27/9/21			
142	Backfill and Temporary paving	21 days	Fri 10/9/21	Thu 30/9/21			
143	Section B2 (ii) - Remaining northern part of L12 HRSG area and its surrounding at Area F6A and F6C	319 days	Fri 1/1/21	Mon 15/11/21			
144	Area Possession and Clearance at Area F6A	30 days	Fri 1/1/21	Sat 30/1/21			
145	Subletting / Fabrication / Delivery (for Area F6A and F6C civil)	90 days	Sat 2/1/21	Thu 1/4/21			
146	Construction of Underground pits (HRSG Blowdown sump pit)	110 days	Sat 2/1/21	Wed 21/4/21			
147	Excavation & Construct Pile Caps & Tie Beams & Piers	139 days	Mon 1/2/21	Sat 10/7/21			
148	Construction underground utilities within HRSG	55 days	Mon 19/7/21	Sat 11/9/21			
149	Construction of Underground pits (GT Oil & Chemical drain pits)	15 days	Thu 5/8/21	Thu 19/8/21			
150	Backfill & Construction on-grade slabs & RC plinths on top	45 days	Sun 12/9/21	Tue 26/10/21			
151	Construct RC Walls	90 days	Thu 22/4/21	Tue 20/7/21			
152	Construction of Underground utilities at F6C	21 days	Tue 19/10/21	Mon 8/11/21			
153	Backfill and Temporary paving	7 days	Tue 9/11/21	Mon 15/11/21			
154	Section B2 - (iii) L12 Turbo Block foundation including the L12 MSB ground floor together with the equipment foundations between GL 12-F to 12-H and 12-1 to 12-6 for the installation of power generator, air inlet duct and lube oil reservoir	452 days	Fri 4/12/20	Mon 28/2/22			
155	Area Possession & Clearance	45 days	Fri 4/12/20	Sun 17/1/21			
156	Subletting / Fabrication / Delivery (Civil+ABWF+BS for MSBL12)	150 days	Fri 25/12/20	Sun 23/5/21			
157	Complete excavation at Type A&C Construction Area	0 days	Sun 21/3/21	Sun 21/3/21			
158	Excavation & Pile Caps & Tie Beams + Slabs (Turbo Block North)	75 days	Sun 31/1/21	Thu 15/4/21			
159	Backfill and construction turbine block & equipment foundation	85 days	Tue 1/6/21	Tue 24/8/21			
160	Excavation & Pile Caps & Tie Beams + Slabs (Turbo Block South)	45 days	Sat 17/4/21	Mon 31/5/21			
161	Construction of internal drainage & on-grade slab	90 days	Wed 1/9/21	Mon 29/11/21			
162	Construction turbine block columns and upper portion for plant embed installation	83 days	Wed 25/8/21	Mon 15/11/21			
163	Concrete Turbine upper part foundation	15 days	Fri 31/12/21	Fri 14/1/22			
164	Construction of Lube Oil Room	14 days	Tue 30/11/21	Fri 28/1/22			
165	Concrete RC walls	115 days	Tue 7/9/21	Thu 30/12/21			
166	ABFW Works	60 days	Thu 4/11/21	Sun 2/1/22			
167	Building Services Works	45 days	Sat 15/1/22	Mon 28/2/22			
168	Remove temporary falsework and scaffolding for installation of power generator	13 days	Mon 7/2/22	Sat 19/2/22			
169	Section B2 - (iv) G/F of L12 MSB including the Condenser Pit, Circulating Water Pipe Pit and equipment foundations between GL 12-B to 12-C and 12-1 to 12-6 for the installation of condenser	377 days	Fri 4/12/20	Wed 15/12/21			
170	Area Possession & Clearance	45 days	Fri 4/12/20	Sun 17/1/21			
171	Subletting / Fabrication / Delivery (for MSB L12 civil)	150 days	Fri 25/12/20	Sun 23/5/21			
172	Excavation to foundation level at ELS SP Type A & C	80 days	Fri 1/1/21	Sun 21/3/21			
173	Install CW Outlet pipe	85 days	Mon 22/3/21	Mon 14/6/21			
174	Construction of CW Outlet Box + lowest tie beam & caps	40 days	Mon 22/3/21	Fri 30/4/21			
175	Construction of pile caps & tie beams & sump pits up to +2.7mPD	26 days	Sat 1/5/21	Wed 26/5/21			
176	Backfill & Construction of CW Inlet Box + tie beams	71 days	Thu 27/5/21	Thu 5/8/21			
177	Construction of pile caps & tie beams at SunShadeCover Area	45 days	Tue 15/6/21	Thu 29/7/21			
178	Backfill and Construction ground beams & trenches	28 days	Thu 27/5/21	Mon 5/7/21			
179	Construction of indoor underground drainage	14 days	Fri 13/8/21	Thu 26/8/21			
180	Backfill & construction on-grade slabs	60 days	Sun 1/8/21	Wed 29/9/21			
181	Construction Column casting and RC walls & equipment foundations	50 days	Thu 30/9/21	Thu 18/11/21			
182	ABFW Works	15 days	Fri 19/11/21	Fri 3/12/21			
183	Building Services Works	20 days	Fri 26/11/21	Wed 15/12/21			
184	Mis. Works and Ready for condenser move in	25 days	Wed 17/11/21	Wed 15/12/21			
185	Section C - (i) Roads and external grounds surrounding L12 MSB and L12 HRSG in addition to the southern & eastern areas mentioned above in Area F5	408 days	Fri 4/12/20	Sat 15/1/22			
186	Area Possession & Clearance	30 days	Fri 4/12/20	Sat 2/1/21			
187	Subletting / Fabrication / Delivery	210 days	Fri 25/12/20	Thu 22/7/21			
188	Complete substructure & Steel Erection works for MSB	0 days	Tue 17/8/21	Tue 17/8/21			
189	Construction all utilities deeper than 2m from future road level	30 days	Wed 18/8/21	Thu 16/9/21			
190	Construction of cable trenches	30 days	Fri 17/9/21	Sat 16/10/21			
191	Backfill and lay temporary paving	91 days	Sun 17/10/21	Sat 15/1/22			
192	Section C - (ii) Whole of L12 MSB including the pipe and cable rack along south façade of L12 MSB with all underground utilities at Area F4 including C.W. Inlet and Outlet Culvert except the deferred works	483 days	Fri 4/12/20	Thu 31/3/22			
193	Area Possession & Clearance	45 days	Fri 4/12/20	Sun 17/1/21			
194	Subletting / Fabrication / Delivery	120 days	Fri 25/12/20	Fri 23/4/21			
195	Construction of pile caps & tie beams at Transformer Area	180 days	Sun 31/1/21	Thu 29/7/21			
196	Backfill and on-grade slab at transformer Area	160 days	Sun 11/4/21	Thu 7/10/21			
197	Construction of Fire Walls at Transformer Area	45 days	Fri 8/10/21	Sun 21/11/21			
198	Excavation & Construction Blow Down Sum pit (SP Type B)	140 days	Wed 14/4/21	Tue 31/8/21			
199	Preparation for S.Steelwork Erection	7 days	Sat 5/6/21	Fri 11/6/21			
200	Structural Delivery & Erection (Turbine Hall North fr G.L. 1-3/H->B)	67 days	Sat 12/6/21	Tue 17/8/21			
201	Structural Delivery & Erection (Equipment Floors)	33 days	Wed 18/8/21	Sun 19/9/21			
202	Structural Delivery & Erection (Turbine Hall South + East Elevation)	47 days	Mon 20/9/21	Mon 15/11/21			
203	Joint Tightening and touch up coating	99 days	Sat 3/7/21	Wed 24/11/21			
204	External Scaffolding Erection	97 days	Thu 15/7/21	Mon 22/11/21			
205	Construction 1/F RC Slab	14 days	Mon 20/9/21	Sun 3/10/21			
206	Construction 2/F RC Slab	7 days	Mon 27/9/21	Sun 10/10/21			
207	Construction 3/F RC Slab	18 days	Thu 30/9/21	Sun 17/10/21			
208	Construction 4/F RC Slab	7 days	Thu 7/10/21	Sun 24/10/21			
209	Construction 5/F RC Slab	44 days	Mon 25/10/21	Tue 7/12/21			
210	Construction 6/F RC Slab	14 days	Wed 1/12/21	Tue 14/12/21			
211	Construction Upper Roof RC Slab	10 days	Sun 12/12/21	Fri 24/12/21			
212	Construction Main Roof RC Slab	39 days	Tue 12/10/21	Fri 19/11/21			
213	Construction Defer Roof RC Slab (G.L. G-H)	14 days	Wed 1/12/21	Tue 14/12/21			
214	Construction of Staircase ST-01 & lift shaft & machine room	130 days	Fri 27/8/21	Mon 3/1/22			
215	Construction M/F RC Slab	14 days	Wed 1/9/21	Tue 14/9/21			
216	Lift Installation	60 days	Tue 4/1/22	Fri 4/3/22			
217	Construction of Staircase ST-02 except defer work	68 days	Mon 11/10/21	Fri 24/12/21			
218	Construction of RC plinth, kerbs & parapet Walls	40 days	Sat 20/11/21	Wed 29/12/21			
219	Erection of Skylight & Roof Features	50 days	Fri 26/11/21	Fri 14/1/22			
220	Waterproofing & Flooring at Roof	34 days	Thu 30/12/21	Thu 17/2/22			
221	ABFW Works	100 days	Fri 8/10/21	Sat 15/1/22			
222	Building Services Works	105 days	Tue 16/11/21	Mon 28/2/22			
223	Metal Cladding, Windows and Louvres incl. roof feature	185 days	Mon 23/8/21	Wed 23/2/22			
224	Removal of external scaffolding	90 days	Wed 1/12/21	Mon 28/2/22			
225	Installation of Catwalk at south elevation	26 days	Mon 31/1/22	Tue 1/3/22			
226	Cladding, ABWF & BS Works	30 days	Wed 2/3/22	Thu 31/3/22			
227	Removal of temporary works & clearance for plant erection contractor	30 days	Sun 30/1/22	Mon 28/2/22			
228	Section C - (iii) Link Bridge between L11 and L12 MSB includin their associated A&A at L11 MSB	493 days	Fri 4/12/20	Sun 10/4/22			
229	BD Consent	0 days	Fri 4/12/20	Fri 4/12/20			
230	Subletting / Fabrication / Delivery (For BS and ABWF)	250 days	Fri 25/12/20	Tue 31/8/21			
231	Clearing Works and plant set-up	30 days	Fri 3/12/21	Sat 1/1/22			
232	Dismantle of north scaffold for link bridge erection	0 days	Tue 25/1/22	Tue 25/1/22			
233	A&A works at South of L11 MSB	30 days	Fri 3/12/21	Sat 1/1/22			
234	Erection of link bridge structural steel	30 days	Sun 2/1/22	Mon 31/1/22			
235	Casting of bridge deck	11 days	Tue 1/2/22	Fri 11/2/22			
236	Metal roofing installation	24 days	Sat 12/2/22	Mon 7/3/22			
237	ABWF work	30 days	Sun 20/2/22	Mon 21/3/22			
238	BS Works	20 days	Tue 22/3/22	Sun 10/4/22			
239	Ready for power cable laying work by others	0 days	Sun 10/4/22	Sun 10/4/22			
240	Section D - (ii) No. 5 Chimney with L12 Steel Flue Liner	810 days	Fri 1/1/21	Tue 21/3/23			
241	Area Possession & Clearance	45 days	Fri 1/1/21	Sun 14/2/21			
242	Subletting / Fabrication / Delivery (For Civil and BS for Microwave Antenna and Equipment)	120 days	Fri 8/1/21	Fri 7/5/21			
243	Excavation & Pile Cap & Backfill	90 days	Sat 2/1/21	Thu 1/4/21			
244	Tower Crane erection	30 days	Tue 11/5/21	Wed 9/6/21			
245	Construction of Wind Shiled + clearance for internal floors and flue+Ground slab	308 days	Fri 2/4/21	Mon 4/4/22			
246	Structural steel fabrication & Delivery for floors and staircase	201 days	Mon 3/1/22	Fri 22/7/22			
247	Erection of steel floors	79 days	Tue 19/4/22	Wed 6/7/22			
248	Construction of G/F room incl. Microwave Antenna Rm	45 days	Thu 7/7/22	Sat 20/8/22			
249	Construction of 1/F RC slab	8 days	Sat 13/8/22	Sat 20/8/22			
250	Construction of 2/F RC Slab	8 days	Fri 5/8/22	Fri 12/8/22			
251	Construction of 3/F RC slab	8 days	Thu 28/7/22	Thu 4/8/22			
252	Construction of 4/F RC slab	8 days	Thu 7/7/22	Thu 14/7/22			
253	Construction of Roof RC slab	61 days	Tue 21/6/22	Sat 20/8/22			
254	Removal of tower Crane	7 days	Sun 21/8/22	Sat 27/8/22			
255	Steel Flue fabrication and delivery	145 days	Sat 5/3/22	Wed 27/7/22			
256	Set up for steel flue installation	60 days	Tue 5/7/22	Fri 2/9/22			
257	Lift & install steel flue liner + cladding works	161 days	Thu 28/7/22	Wed 4/1/23			
258	Lift installation	100 days	Mon 12/12/22	Tue 21/3/23			
259	Installation Louvre & Doors	30 days	Thu 5/1/23	Fri 3/2/23			
260	Mis works, Demobilization and ready for gas duct connection	17 days	Thu 5/1/23	Sat 21/1/23			
261	Section D (i) - ABWF and BS Works at Microwave Antenna Room and Chimney Windshield for installation of microwave and antenna	102 days	Tue 1/3/22	Fri 10/6/22			
262	Completion of Microwave Antenna Room	0 days	Tue 1/3/22	Tue 1/3/22			
263	Remaining ABWF & BS Works	100 days	Thu 3/3/22	Fri 10/6/22			
264	Section E - (i) Administration and Control Building (Transformer Room)	332 days	Fri 4/12/20	Sun 31/10/21			
265	Area Possession & Clearance + BD consent	60 days	Fri 4/12/20	Mon 1/2/21			
266	Subletting / Fabrication / Delivery (For Civil+BS+ABWF)	100 days	Tue 2/2/21	Wed 12/5/21			
267	Excavation works	45 days	Fri 4/12/20	Sun 17/1/21			
268	Main Earth Grid Installation	45 days	Sun 3/1/21	Tue 16/2/21			
269	Pile cap and Tie Beam	45 days	Sun 3/1/21	Tue 16/2/21			
270	Tower Crane Erection and modification works	49 days	Wed 10/2/21	Tue 30/3/21			
271	Substructure + Bearing walls + On grade slabs	115 days	Wed 17/2/21	Fri 11/6/21			
272	Construction of RC up to 1/F incl. staircases	69 days	Sat 12/6/21	Thu 19/8/21			
273	ABWF at G						

Contract No. 19/83002 Lamma Power Station Extension Civil and Building Works for Unit L12

Master Programme

ID	Task Name	Duration	Start	Finish	Sep	Oct	Nov
281	Construction of RC up to R/F incl. staircases	25 days	Thu 30/9/21	Sun 24/10/21			
282	Construction of RC up to lift machine room	21 days	Mon 25/10/21	Sun 14/11/21			
283	Construction of RC up to UR/F	21 days	Mon 15/11/21	Sun 5/12/21			
284	External Wall Finish, Cladding + Windows and Louvres + Features	138 days	Thu 30/9/21	Mon 14/2/22			
285	ABWF at 1/F	95 days	Fri 8/10/21	Mon 10/1/22			
286	ABWF at 2/F	96 days	Fri 15/10/21	Tue 18/1/22			
287	Building Services Works at G/F, 1/F, 2/F & Hoisting Well	147 days	Tue 5/10/21	Mon 28/2/22			
288	Section E (iii) Whole of Administration and Control Building	544 days	Fri 4/12/20	Tue 31/5/22			
289	Subletting / Fabrication / Delivery (For BS-ABWF)	127 days	Sat 23/10/21	Sun 20/3/22			
290	Construction of New UG Grey Water Tank	60 days	Mon 20/3/23	Thu 18/5/23			
291	Submission of WW046 for commencement	60 days	Wed 19/1/22	Sat 19/3/22			
292	ABWF at 3/F	120 days	Mon 25/10/21	Mon 21/2/22			
293	ABWF at 4/F	90 days	Wed 24/11/21	Mon 21/2/22			
294	ABWF at R/F	60 days	Wed 15/12/21	Sat 12/2/22			
295	ABWF at UR/F + Lift Machine Room	45 days	Wed 5/1/22	Fri 18/2/22			
296	Bridge Erection & Connection	28 days	Mon 7/2/22	Mon 28/3/22			
297	Installation of Raised floors	60 days	Fri 7/1/22	Fri 29/4/22			
298	Removal of external scaffolding	39 days	Mon 24/1/22	Wed 9/3/22			
299	Waterproofing & screeding	60 days	Mon 6/12/21	Thu 3/2/22			
300	Removal of Tower Crane	7 days	Thu 10/3/22	Wed 16/3/22			
301	External utilities and road work	45 days	Tue 8/2/22	Thu 14/4/22			
302	Building Services Works	160 days	Tue 7/12/21	Sun 15/5/22			
303	False ceiling after BS works	54 days	Tue 29/3/22	Sat 21/5/22			
304	Submission of WW046 for completion	30 days	Wed 9/3/22	Thu 7/4/22			
305	Submission of FS inspection	14 days	Fri 13/5/22	Thu 26/5/22			
306	Submission for OP Inspection	14 days	Wed 18/5/22	Tue 31/5/22			
307	Section F (i) - Gas Receiving Station and L12 Gas Receiving Station Equipment Room (GRS) Area Extension at Area F14	548 days	Tue 1/6/21	Wed 30/11/22			
308	Area Possession & Clearance + BD consent	90 days	Tue 1/6/21	Sun 29/8/21			
309	Subletting / Fabrication / Delivery	30 days	Tue 22/6/21	Wed 21/7/21			
310	Installation of pipe pile at north of GRS (VO)	134 days	Mon 5/7/21	Mon 15/11/21			
311	Construction Equipment room extension	145 days	Sun 31/10/21	Thu 24/3/22			
312	Modification of existing drainage	45 days	Fri 25/3/22	Sun 8/5/22			
313	Excavation & earthing for Skid foundations	21 days	Mon 9/5/22	Sun 29/5/22			
314	Construction of Skid foundation	45 days	Mon 30/5/22	Wed 13/7/22			
315	Construct underground utilities and drainage	45 days	Thu 14/7/22	Sat 27/8/22			
316	Backfill and road works	60 days	Sun 28/8/22	Wed 26/10/22			
317	Relocate / install new fencing for completion	21 days	Thu 27/10/22	Wed 16/11/22			
318	Mis. Work and ready for OP inspection	14 days	Thu 17/11/22	Wed 30/11/22			
319	Section F (ii) - Pipe and Cable rack and external work at Area F9A and F9B	515 days	Sat 2/1/21	Tue 31/5/22			
320	BD consent + Site Possession at Area F9A & F9B	90 days	Sat 2/1/21	Thu 1/4/21			
321	Excavation & Plate load test	30 days	Mon 1/11/21	Tue 30/11/21			
322	Construction new footing for pipe rack	30 days	Wed 1/12/21	Thu 30/12/21			
323	Underground utilities and road works for completion	11 days	Thu 31/3/22	Tue 31/5/22			
324	Structural Steel fabrication & Delivery	90 days	Sat 2/10/21	Thu 30/12/21			
325	Erection of new pipe rack	70 days	Fri 31/12/21	Thu 10/3/22			
326	Mis. Work and ready for OP inspection	21 days	Wed 11/5/22	Tue 31/5/22			
327	Section F (iii) - No. 5 CW Equipment Room, pipe and cable rack, external works at Area F10	457 days	Tue 1/6/21	Wed 31/8/22			
328	Area Possession & Clearance + BD consent	90 days	Tue 1/6/21	Sun 29/8/21			
329	Subletting / Fabrication / Delivery For ABWF + BS	150 days	Wed 2/6/21	Fri 29/10/21			
330	Installation of Sheet Pile (VO)	85 days	Tue 1/6/21	Tue 24/8/21			
331	Consent for ELS Works	28 days	Wed 25/8/21	Tue 21/9/21			
332	Excavation & Plate load test	30 days	Wed 22/9/21	Thu 21/10/21			
333	Construction new footing for equipment room	68 days	Thu 23/12/21	Mon 28/2/22			
334	Superstructure for equipment room	60 days	Tue 1/3/22	Fri 29/4/22			
335	ABWF Works	45 days	Sat 30/4/22	Mon 13/6/22			
336	BS Works	30 days	Wed 1/6/22	Thu 30/6/22			
337	Construction RC Wall & plinths & drainage at Chlorinator area	45 days	Wed 30/3/22	Fri 13/5/22			
338	External wall finish & remove scaffolding	30 days	Sat 14/5/22	Sun 12/6/22			
339	Excavation & Plate load test for pipe rack extension (For F45-47 & F49)	30 days	Sat 16/10/21	Sun 14/11/21			
340	Construction new footing for pipe rack (For F45-47 & F49)	45 days	Mon 15/11/21	Wed 29/12/21			
341	Underground utilities and road works for completion	60 days	Thu 30/12/21	Sun 27/2/22			
342	Structural Steel fabrication & Delivery	90 days	Sun 12/12/21	Fri 11/3/22			
343	Backfilling and prepare for steel erection	12 days	Mon 28/2/22	Fri 11/3/22			
344	Excavation & Plate Load test for pipe rack extension (For F48 & F56)	14 days	Wed 30/3/22	Tue 12/4/22			
345	Construction of new footing for pipe rack (For F48 & F56)	14 days	Wed 13/4/22	Tue 26/4/22			
346	Erection of new pipe rack (For F48 & F56)	65 days	Tue 3/5/22	Wed 6/7/22			
347	Erection of new pipe rack (For F45-47 & F49)	70 days	Sat 12/3/22	Fri 20/5/22			
348	Mis. Work and ready for OP inspection	56 days	Thu 7/7/22	Wed 31/8/22			
349	Section G (i) - External Work surrounding Area F11	145 days	Sat 4/6/22	Wed 26/10/22			
350	Area Possession & Clearance after handover from No. 5 Intake Contractor	30 days	Sat 4/6/22	Sun 3/7/22			
351	Subletting / Fabrication / Delivery	30 days	Sat 4/6/22	Sun 3/7/22			
352	Submission WW0046 for commencement	30 days	Sat 4/6/22	Sun 3/7/22			
353	Construct Underground utilities and drainage	30 days	Mon 20/6/22	Tue 19/7/22			
354	Install new FS Hydrant	20 days	Mon 20/6/22	Sat 9/7/22			
355	Submission WW0046 for completion	30 days	Sat 30/7/22	Sun 28/8/22			
356	Construction Road extension	58 days	Sat 30/7/22	Sun 25/9/22			
357	Construction road paving and install fencing	30 days	Mon 26/9/22	Tue 25/10/22			
358	Ready for OP inspection	14 days	Thu 13/10/22	Wed 26/10/22			
359	Section G (ii) - External Works at Area F12 & F13	666 days	Fri 4/12/20	Fri 30/9/22			
360	Area Possession & Clearance after handover from other	45 days	Fri 4/12/20	Sun 17/1/21			
361	Subletting / Fabrication / Delivery	180 days	Thu 4/3/21	Mon 30/8/21			
362	Excavation	21 days	Sat 23/10/21	Fri 12/11/21			
363	Submission WW0046 for commencement	30 days	Sat 13/11/21	Sun 12/12/21			
364	Construct Underground utilities and drainage	90 days	Mon 13/12/21	Sat 12/3/22			
365	Install new FS Hydrant	30 days	Sun 13/3/22	Mon 11/4/22			
366	Submission WW0046 for completion	30 days	Tue 12/4/22	Wed 11/5/22			
367	Construction Road extension	127 days	Thu 12/5/22	Thu 15/9/22			
368	Complete with Mis. Works for completion	15 days	Fri 16/9/22	Fri 30/9/22			
369	Section G (iii) - FS Modification works along South Seafront Road at Area F15	183 days	Fri 1/4/22	Fri 30/9/22			
370	Area Possession & Clearance after handover from other	45 days	Fri 1/4/22	Sun 15/5/22			
371	Subletting / Fabrication / Delivery	21 days	Fri 1/4/22	Thu 21/4/22			
372	Temporary Traffic Arrangement approval	14 days	Fri 1/4/22	Thu 14/4/22			
373	Utilities scanning and expose existing FS	14 days	Fri 15/4/22	Thu 28/4/22			
374	Determine new FS alignment	21 days	Fri 29/4/22	Thu 19/5/22			
375	Submission to FSD	14 days	Fri 20/5/22	Thu 2/6/22			
376	Modification of FS	60 days	Fri 3/6/22	Mon 18/8/22			
377	Backfill and reinstatement + report to FSD	60 days	Tue 2/8/22	Fri 30/9/22			
378	Section G (iv) - 275kV cable trenches and External Works at Area F16	518 days	Sat 1/5/21	Fri 30/9/22			
379	Area Possession & Clearance	60 days	Sat 1/5/21	Tue 29/6/21			
380	Subletting / Fabrication / Delivery	210 days	Wed 17/11/21	Tue 14/6/22			
381	Temporary Traffic Arrangement approval	60 days	Sat 1/5/21	Tue 29/6/21			
382	Removal of aboveground services	60 days	Wed 30/6/21	Sat 28/8/21			
383	Utilities scanning and expose existing UU	30 days	Sun 29/8/21	Mon 27/9/21			
384	Arrange of diversion existing UG utilities	90 days	Tue 29/9/21	Sun 26/12/21			
385	Construct new cable trenches	173 days	Mon 27/12/21	Fri 17/6/22			
386	Realign / install new UG utilities	60 days	Sat 18/6/22	Tue 16/8/22			
387	Backfill and reinstatement + report to FSD	45 days	Wed 17/8/22	Fri 30/9/22			
388	Section G (v) - Shunt Reactor Compound and External Works at Area F17	666 days	Fri 4/12/20	Fri 30/9/22			
389	Temporary Traffic Arrangement approval	45 days	Fri 4/12/20	Sun 17/1/21			
390	Subletting / Fabrication / Delivery	100 days	Fri 25/12/20	Sat 3/4/21			
391	BD approval & consent for pipe pile installation	90 days	Fri 4/12/20	Wed 3/3/21			
392	Area Possession & Clearance	14 days	Thu 4/3/21	Wed 17/3/21			
393	Removal of aboveground services	21 days	Thu 18/3/21	Wed 7/4/21			
394	Utilities scanning and expose existing UU	15 days	Thu 8/4/21	Thu 22/4/21			
395	Arrange of diversion existing UG utilities	45 days	Fri 23/4/21	Sun 6/6/21			
396	Install pipe piles	61 days	Sun 23/5/21	Thu 22/7/21			
397	BA14 for pipepile and BD consent for ELS	28 days	Fri 23/7/21	Thu 19/8/21			
398	Excavation & install earthing	35 days	Fri 20/8/21	Thu 23/9/21			
399	Construct Pile Caps and Tie Beams	45 days	Fri 24/9/21	Sun 7/11/21			
400	Backfill & Erect scaffold	21 days	Mon 8/11/21	Sun 28/11/21			
401	Construction of SRC Walls	75 days	Mon 29/11/21	Fri 11/2/22			
402	Wall finish and remove scaffolding	24 days	Sat 12/2/22	Mon 7/3/22			
403	Construct new cable trenches	60 days	Tue 8/3/22	Fri 6/5/22			
404	Install new UG Utilities, Backfill and reinstatement + ready for cable laying by Others for DAX1	55 days	Thu 7/4/22	Tue 31/5/22			
405	Realign / install new UG utilities (for DAX2, APX1 & APX3)	117 days	Sat 7/5/22	Wed 31/8/22			
406	Backfill and reinstatement + ready for cable laying by others (for DAX2, APX1, & APX3)	30 days	Thu 1/9/22	Fri 30/9/22			
407	Section G (vi) - 275kV cable trenches and External Works at Area F18	397 days	Sat 1/5/21	Wed 1/6/22			
408	Temporary Traffic Arrangement approval	45 days	Sat 1/5/21	Mon 14/6/21			
409	Subletting / Fabrication / Delivery	60 days	Tue 15/6/21	Fri 13/8/21			
410	Area Possession & Clearance	15 days	Sat 1/5/21	Sat 15/5/21			
411	Removal of aboveground services	30 days	Sun 16/5/21	Mon 14/6/21			
412	Utilities scanning and expose existing UU	45 days	Tue 15/6/21	Thu 29/7/21			
413	Arrange of diversion existing UG utilities	60 days	Fri 30/7/21	Mon 27/9/21			
414	Construct new cable trenches	172 days	Tue 28/9/21	Fri 18/3/22			
415	Realign / install new UG utilities	45 days	Sat 19/3/22	Mon 2/5/22			
416	Backfill and reinstatement + ready for cable laying by others	30 days	Tue 3/5/22	Wed 1/6/22			
417	Section G (vii) - Flood wall at No. 5 CW Intake Area along HUA at Area F20A	521 days	Fri 4/12/20	Sun 8/5/22			
418	Area Possession & Clearance	30 days	Fri 4/12/20	Sat 2/1/21			
419	Subletting / Fabrication / Delivery	60 days	Fri 25/12/20	Mon 22/2/21			
420	Temporary Traffic Arrangement approval	300 days	Fri 4/12/20	Wed 29/9/21			
421							

Contract No. 19/83002 Lamma Power Station Extension Civil and Building Works for Unit L12

Master Programme

ID	Task Name	Duration	Start	Finish	Sep	Oct	Nov
435	Demolition of existing carriageway	60 days	Fri 1/10/21	Mon 29/11/21			
436	Removal of aboveground services	21 days	Tue 30/11/21	Mon 20/12/21			
437	Utilities scanning and expose existing UU	21 days	Tue 21/12/21	Mon 10/1/22			
438	Arrange of diversion existing UG utilities	30 days	Tue 1/1/22	Wed 9/2/22			
439	Install Sheetpiles	55 days	Thu 10/2/22	Tue 5/4/22			
440	BA14 for sheetpile and BD consent for ELS	28 days	Wed 6/4/22	Tue 3/5/22			
441	Excavation and construction of new Flood wall	90 days	Wed 4/5/22	Mon 1/8/22			
442	Realignment / install new UG utilities	30 days	Tue 2/8/22	Wed 31/8/22			
443	Backfill and construct new carriageway	21 days	Thu 1/9/22	Wed 21/9/22			
444	Mis. Work for completion	9 days	Thu 22/9/22	Fri 30/9/22			
445	Section G (ix) - Bund wall modification works at South Seafront Road at Area F21	316 days	Fri 4/12/20	Fri 15/10/21			
446	Area Possession & Clearance	45 days	Fri 4/12/20	Sun 17/1/21			
447	Subletting / Fabrication / Delivery	90 days	Fri 25/12/20	Wed 24/3/21			
448	Temporary Traffic Arrangement approval	165 days	Fri 4/12/20	Mon 17/5/21			
449	ELS BD approval & consent	0 days	Thu 17/12/20	Thu 17/12/20			
450	Demolition of existing carriageway	14 days	Tue 18/5/21	Mon 31/5/21			
451	Removal of aboveground services	14 days	Tue 1/6/21	Mon 14/6/21			
452	Utilities scanning and expose existing UU	21 days	Tue 15/6/21	Mon 5/7/21			
453	Arrange of diversion existing UG utilities (include FS pipe under 17/8002)	40 days	Tue 6/7/21	Sat 14/8/21			
454	Excavation and expose existing bund wall & demolish	18 days	Wed 28/7/21	Sat 14/8/21			
455	Construction new bund wall for road junction	21 days	Sat 4/9/21	Fri 24/9/21			
456	Realignment / install new UG utilities (include FS pipe under 17/8002)	60 days	Sun 1/8/21	Wed 29/9/21			
457	Backfill and construct new carriageway	16 days	Thu 30/9/21	Fri 15/10/21			
458	Mis. Work for completion	5 days	Mon 11/10/21	Fri 15/10/21			
459	Section G (x) - DAX Cable Diversion Works (from Part I to Part IV)	756 days	Fri 4/12/20	Sat 31/12/22			
460	Temporary Traffic Arrangement approval	14 days	Fri 4/12/20	Thu 17/12/20			
461	Subletting / Fabrication / Delivery	90 days	Fri 25/12/20	Wed 24/3/21			
462	Area Possession & Clearance	45 days	Fri 4/12/20	Sun 17/1/21			
463	Identification of existing cable trench	7 days	Mon 18/1/21	Sun 24/1/21			
464	Part 1 Re-excavation works incl.construction of joint bay (at Water Reservoir Road)	246 days	Mon 25/1/21	Mon 27/9/21			
465	Part 1 Re-excavation works incl construction of joint bay (other than Reservoir road base on revised routing)	310 days	Mon 25/1/21	Tue 30/11/21			
466	Part 2 Re-excavation works incl. joint bay	120 days	Mon 1/11/21	Mon 28/2/22			
467	Part 3 Re-excavation works incl. joint bay	242 days	Mon 1/11/21	Thu 30/6/22			
468	Part 4 Re-excavation works incl. joint bay & new oil tank pits	92 days	Sat 1/10/22	Sat 31/12/22			
469	Backfill & Reinstatement Part 1	61 days	Mon 1/11/21	Fri 31/12/21			
470	Backfill & Reinstatement Part 2	61 days	Sun 1/5/22	Thu 30/6/22			
471	Backfill & Reinstatement Part 3	61 days	Thu 1/9/22	Mon 31/10/22			
472	Section H - All remaining works shall be completed for reporting completion to BD and ready for OP inspection (PS1.4.4)	775 days	Wed 17/11/21	Sun 31/12/23			
473	Deferred works (MSB & HRS) Listed in PS 1.4.4	272 days	Wed 17/11/21	Mon 15/8/22			
474	Construction of 12 MSB roof between GL12-G to 12-H and 12-2 to 12-6 after the overhead crane installation by the Employer's Specialist Contractors	38 days	Wed 17/11/21	Fri 7/1/22			
475	Construction of walls of 12 MSB below 1/F along GL 12-6 from GL12-B to 12-C and the associated staircases including the enclosure walls between G/F and 1/F. The Contractor shall allow access for the Employer's Specialist Contractors to use the hoisting we	92 days	Mon 16/5/22	Mon 15/8/22			
476	Provision in associated with hoisting well	21 days	Mon 6/6/22	Sun 26/6/22			
477	Construction of internal partition wall at 1/F of 12 MSB along GL 12-C from GL 12-2 to 12-3 AND North Façade at 1/F of L12 MSB along GL 12-1 from GL 12-B to 12-C	30 days	Sat 16/4/22	Sun 15/5/22			
478	Construction of metal fence and the associated Fire Services (F.S.) installations and installation of removable shelter at Transformer Area	92 days	Mon 16/5/22	Mon 15/8/22			
479	Deferred works (DAX1 and DAX2) Listed in PS 1.4.4	334 days	Wed 1/2/23	Sun 31/12/23			
480	Backfilling of whole DAX1 compartment inside existing joint bay "STJ12" and the new oil tank pit A located aside existing joint bay "STJ12".	59 days	Wed 1/2/23	Fri 31/3/23			
481	Re-excavation of whole DAX2 compartment inside existing joint bay "STJ12".	61 days	Tue 1/8/23	Sat 30/9/23			
482	Backfilling of whole DAX2 compartment inside existing joint bay "STJ12" and the new oil tank pit B located aside existing joint bay "STJ12".	61 days	Wed 1/11/23	Sun 31/12/23			
483	Deferred works (External Work) Listed in PS 1.4.4	121 days	Thu 1/12/22	Fri 31/3/23			
484	Final reinstatement of access roads and pavement surrounding and within L12 MSB and L12 HRS area	62 days	Thu 1/12/22	Tue 31/1/23			
485	Installation of trench cover and road reinstatement of gas pipe and cable trenches within Area F5, F14, F16, F17 and F18.	90 days	Sun 1/1/23	Fri 31/3/23			
486	Backfilling and road-reinstatement of 275kV cable trenches	90 days	Sun 1/1/23	Fri 31/3/23			
487	All Remaining work ready for OP inspection	0 days	Tue 28/2/23	Tue 28/2/23			
488	STATUTORY SUBMISSION, INSPECTION & APPROVAL	560 days	Tue 16/11/21	Mon 29/5/23			
489	WSD Statutory Submission, Inspection and Approval WWO Part I to III Submission / Approval	256 days	Tue 16/11/21	Fri 29/7/22			
490	WSD: Submit to WSD Form WWO 046 Part I to II - FOR ACB Building (for Ext Works at later stage)	0 days	Tue 16/11/21	Tue 16/11/21			
491	WSD: Vetting Form WWO 046 Part I and II Submission	90 days	Wed 17/11/21	Mon 14/2/22			
492	WSD: Issued of Form WWO 046 Part III by WSD - FOR ACB Building	0 days	Tue 15/2/22	Tue 15/2/22			
493	WSD: Prepare for 1st Amendment for Plumbing Plan	60 days	Tue 15/2/22	Fri 15/4/22			
494	WSD: Submit to WSD 1st Amendment for Plumbing Plan	0 days	Fri 15/4/22	Fri 15/4/22			
495	WSD: Vetting of Plumbing Plan by WSD	60 days	Sat 16/4/22	Tue 14/6/22			
496	WSD: 1st Approval for Plumbing Plan by WSD	0 days	Tue 14/6/22	Tue 14/6/22			
497	WSD: Prepare and Submit for Final Amendment for Plumbing Plan	45 days	Wed 15/6/22	Fri 29/7/22			
498	WSD: Vetting and Final Approval for Plumbing Plan by WSD	0 days	Fri 29/7/22	Fri 29/7/22			
499	WSD Statutory Submission, Inspection and Approval WWO Part IV to V Fire Services Water Submission / Approval	33 days	Fri 29/7/22	Wed 31/8/22			
500	WSD: Form WWO 046 Part IV Submission (FS)	0 days	Fri 29/7/22	Fri 29/7/22			
501	WSD: WSD Received Form WWO046 Part IV and arrange for inspection (FS)	7 days	Sat 30/7/22	Fri 5/8/22			
502	WSD: WSD Inspection (FS)	7 days	Sat 6/8/22	Fri 12/8/22			
503	WSD: WWO 046 Part V Endorsement by WSD (FS)	12 days	Sat 13/8/22	Wed 24/8/22			
504	WSD: WSD Processing Water Supply Connection Certificate (FS)	7 days	Thu 25/8/22	Wed 31/8/22			
505	WSD: Issue by WSD Water Supply Connection Certificate (FS)	0 days?	Wed 31/8/22	Wed 31/8/22			
506	WSD Statutory Submission, Inspection and Approval WWO Part IV to V Potable /Flush Water Submission / Approval	60 days	Fri 19/8/22	Tue 18/10/22			
507	WSD: Form WWO 046 Part IV Submission (Fresh/Flush)	0 days	Fri 19/8/22	Fri 19/8/22			
508	WSD: WSD Acknowledge Form WWO 046	6 days	Sat 20/8/22	Thu 25/8/22			
509	WSD: WSD Inspection with Testing to lead (Fresh/Fluhs)	12 days	Fri 26/8/22	Tue 6/9/22			
510	WSD: Cleansing/Disinfecting Water Tanks / Piping System (Fresh/Flush)	6 days	Wed 7/9/22	Mon 12/9/22			
511	WSD: Collection of Sample for Testing at Accredited Lab (Fresh/Flush)	12 days	Tue 13/9/22	Sat 24/9/22			
512	WSD: Accredited Lab Testing Report of Sample to WSD	12 days	Sun 25/9/22	Thu 6/10/22			
513	WSD: Vetting of Test Report by WSD	6 days	Fri 7/10/22	Wed 12/10/22			
514	WSD: Issue of WWO 046 Part V (Fresh/Flush)	0 days	Wed 12/10/22	Wed 12/10/22			
515	WSD: WSD Processing WWO1005 Water Certification (Fresh/Flush)	6 days	Thu 13/10/22	Tue 18/10/22			
516	WSD: Issue by WSD WWO 1005 Water Certification (Fresh/Flush)	0 days	Tue 18/10/22	Tue 18/10/22			
517	EMSD LIFT Statutory Submission, Inspection and Approval	45 days	Sat 26/3/22	Mon 9/5/22			
518	EMSD: Submission of Lift Form LE5 to EMSD	12 days	Sat 26/3/22	Wed 6/4/22			
519	EMSD: EMSD Makes arrangement for Lift Installation	5 days	Thu 7/4/22	Mon 11/4/22			
520	EMSD: EMSD Inspection to Lift Installation	14 days	Tue 12/4/22	Mon 25/4/22			
521	EMSD: Processing Lift Certificate (Form LE6)	14 days	Tue 26/4/22	Mon 9/5/22			
522	EMSD: Lift Issuance of Form 6 (Lift Certificate)	0 days	Mon 9/5/22	Mon 9/5/22			
523	HKE Transformer Final Inspection	120 days	Thu 30/6/22	Thu 27/10/22			
524	TX Room: Invite HKE For Transformer Room Inspection	7 days	Thu 30/6/22	Wed 6/7/22			
525	TX Room: Give Access to Transformer Room for HKE Contractor	0 days	Wed 6/7/22	Wed 6/7/22			
526	TX Room: Move-IN HKE Transformer Equipments	5 days	Thu 7/7/22	Mon 11/7/22			
527	TX Room: Install HKE Transformer, MEP Works & Testing	90 days	Tue 12/7/22	Sun 9/10/22			
528	TX Room: HKE Power Energization / Inspection	6 days	Mon 10/10/22	Sat 15/10/22			
529	TX Room: Metering Installation	12 days	Sun 16/10/22	Thu 27/10/22			
530	TX Room: HKE Power-ON Date	0 days	Thu 27/10/22	Thu 27/10/22			
531	DSD Drainage Completion Memo	65 days	Sun 2/10/22	Mon 5/12/22			
532	DSD: CCTV Survey Report on Completed Drainage	30 days	Sun 2/10/22	Mon 31/10/22			
533	DSD: Submitted CCTV Report & Form HPB1 of Completed Drainage to DSD For Technical Audit	7 days	Tue 1/11/22	Mon 7/11/22			
534	DSD: Completed Drainage System including TMC Inspection/Technical Audit by DSD	14 days	Tue 8/11/22	Mon 21/11/22			
535	DSD: Preparation of Drainage Connection Completion Memo by DSD	14 days	Tue 22/11/22	Mon 5/12/22			
536	DSD: Issue of Drainage Connection Completion Memo by DSD	0 days	Mon 5/12/22	Mon 5/12/22			
537	EPD Submission, Inspection and Approval	60 days	Thu 30/6/22	Mon 29/8/22			
538	EPD: License Application to EPD under APCO (Cap 311) for Generator Sets	0 days	Thu 30/6/22	Thu 30/6/22			
539	EPD: Vetting of Application by EPD under APCO (Cap 311) for Generator Sets	60 days	Fri 1/7/22	Mon 29/8/22			
540	EPD: Approval from EPD under APCO (Cap 311) for Generator Sets Installation	0 days	Mon 29/8/22	Mon 29/8/22			
541	FSD VAC Statutory Submission, Inspection and Approval	150 days	Wed 20/7/22	Fri 16/12/22			
542	Preparation of FSD VAC Drawings and Submission to HEC	60 days	Wed 20/7/22	Sat 17/9/22			
543	HEC: Review and Approval	30 days	Sun 18/9/22	Mon 17/10/22			
544	Preparation of VAC Drawings and Submission to FSD	30 days	Tue 18/10/22	Wed 16/11/22			
545	FSD: Review and Approval	30 days	Thu 17/11/22	Fri 16/12/22			
546	FSD Statutory Submission, Inspection and Approval	91 days	Tue 28/2/23	Mon 29/5/23			
547	Testing and Commissioning (Individual System - FSI Related)	45 days	Tue 28/2/23	Thu 13/4/23			
548	FSD: All Sections FS Ingration Test by NSC BS	15 days	Fri 14/4/23	Fri 28/4/23			
549	FSD: Completion of FS Integration Test by NSC BS for FS314/501	0 days	Fri 28/4/23	Fri 28/4/23			
550	FSD: Submit Form 213/314 & Form 501 Request for Inspection	0 days	Fri 28/4/23	Fri 28/4/23			
551	FSD: FSD Makes Arrangement for Inspection	7 days	Sat 29/4/23	Fri 5/5/23			
552	FSD: FSD Inspection	12 days	Sat 6/5/23	Wed 17/5/23			
553	FSD: Completion of FS Inspection	0 days	Wed 17/5/23	Wed 17/5/23			
554	FSD: FSD Processing FS Certificate Form 172	12 days	Thu 18/5/23	Mon 29/5/23			
555	FSD: Issue of Fire Services FS Certificate Form 172	0 days	Mon 29/5/23	Mon 29/5/23			
556	PRACTICAL COMPLETION	216 days	Tue 30/5/23	Sun 31/12/23			
557	BD Inspection	97 days	Tue 30/5/23	Sun 3/9/23			
558	BD: Application Form BA13 for OP Application	21 days	Tue 30/5/23	Mon 19/6/23			
559	BD: BD Inspection Date	15 days	Tue 20/6/23	Tue 4/7/23			
560	BD: Reinspection date with defects and rectification works	60 days	Wed 5/7/23	Sat 2/9/23			
561	BD: Obtain Occupation Permit (OP) from BD	1 day	Sun 3/9/23	Sun 3/9/23			
562	As-Built Drawings & Handover Documentation	120 days	Wed 14/6/23	Wed 11/10/23			
563	Prepare and Submit As-Built Drawings & Handover Documentation	45 days	Wed 14/6/23	Fri 28/7/23			
564	Review and Approval	45 days	Sat 29/7/23	Mon 11/9/23			
565	As-Built Drawings & Handover Documentation - Revision by MC	30 days	Tue 12/9/23	Wed 11/10/23			
566	Revised As-Built Drawings &						

ID	Task Name	Duration	Start	Finish	Sep '22					Oct '22				Nov '22					
					28	04	11	18	25	02	09	16	23	30	06	13	20	27	
1	19-83014 - Civil Works for No. 5 C.W. Intake and Cable Bridge at Lamma Power Station Extension	334 days	Fri 12/10/21	Sat 11/19/22	[Gantt bar from Sep 11 to Nov 20]														
2	No. 5 C.W. Intake	334 days	Fri 12/10/21	Sat 11/19/22	[Gantt bar from Sep 11 to Nov 20]														
3	Installation of 1st row of tie back (Except North)	24 days	Wed 12/15/21	Tue 01/11/22	[Gantt bar from Sep 15 to Oct 9]														
4	Installation of 1st row of waling and strut	5 days	Wed 01/12/22	Sun 01/16/22	[Gantt bar from Sep 16 to Sep 21]														
5	Install 1st row tie back after extract sheet pile	7 days	Mon 01/17/22	Sun 01/23/22	[Gantt bar from Sep 17 to Sep 24]														
6	Install remaining waling & struct	7 days	Fri 01/21/22	Thu 01/27/22	[Gantt bar from Sep 21 to Sep 28]														
7	Excavate upto +2.70mPD	5 days	Wed 01/26/22	Sun 01/30/22	[Gantt bar from Sep 26 to Oct 1]														
8	Pull-out Test for 2nd row of tie back (5 nos.)	10 days	Fri 02/04/22	Sun 02/13/22	[Gantt bar from Sep 26 to Oct 6]														
9	Intall 2nd tie back (West) 25 nos	12 days	Fri 02/04/22	Tue 02/15/22	[Gantt bar from Sep 26 to Oct 7]														
10	Excavate West and install struct & waling	18 days	Wed 02/16/22	Sat 03/05/22	[Gantt bar from Sep 26 to Oct 13]														
11	Install 2nd row of tie back (144nos)	56 days	Fri 02/04/22	Thu 03/31/22	[Gantt bar from Sep 26 to Nov 19]														
12	Install 2nd row Waling	14 days	Fri 03/25/22	Fri 04/08/22	[Gantt bar from Oct 1 to Oct 15]														
13	Excavate upto -7.20mPD	26 days	Sat 04/09/22	Wed 05/04/22	[Gantt bar from Oct 1 to Oct 27]														
14	Install Silt Curtain	2 days	Sat 04/09/22	Sun 04/10/22	[Gantt bar from Oct 1 to Oct 2]														
15	Removal of seawall coping	21 days	Mon 04/11/22	Sun 05/01/22	[Gantt bar from Oct 3 to Oct 24]														
16	Removal of seawall block	26 days	Thu 05/05/22	Tue 05/31/22	[Gantt bar from Oct 3 to Oct 29]														
17	Preparation for removal of culvert	14 days	Wed 05/18/22	Tue 05/31/22	[Gantt bar from Oct 3 to Oct 17]														
18	Removal of culvert	10 days	Wed 06/01/22	Sat 06/11/22	[Gantt bar from Oct 3 to Oct 13]														
19	Touch up formation for intake precast move in	14 days	Tue 05/31/22	Tue 06/14/22	[Gantt bar from Oct 3 to Oct 17]														
20	Offsite Fabrication of No. 5 Intake Chamber	166 days	Fri 12/10/21	Sat 06/04/22	[Gantt bar from Sep 11 to Nov 5]														
21	Bottom Slab	110 days	Fri 12/10/21	Thu 04/07/22	[Gantt bar from Sep 11 to Oct 10]														
22	External Wall (1st pour)	10 days	Fri 04/08/22	Sun 04/17/22	[Gantt bar from Oct 1 to Oct 11]														
23	External Wall (2nd pour)	10 days	Mon 04/18/22	Wed 04/27/22	[Gantt bar from Oct 1 to Oct 11]														
24	External Wall (3rd pour)	10 days	Thu 04/28/22	Sat 05/07/22	[Gantt bar from Oct 1 to Oct 11]														
25	Temp bulkhead panel	7 days	Sun 05/08/22	Sun 05/15/22	[Gantt bar from Oct 1 to Oct 8]														
26	Concrete curing & Mis. Work before ship out	12 days	Mon 05/16/22	Fri 05/27/22	[Gantt bar from Oct 1 to Oct 13]														
27	Delivery of Precast Chamber	7 days	Sat 05/28/22	Sat 06/04/22	[Gantt bar from Oct 1 to Oct 8]														
28	Installation of Precast No. 5 Intake Chamber	4 days	Wed 06/15/22	Sat 06/18/22	[Gantt bar from Oct 1 to Oct 4]														
29	Prepare formation level for reinstall culvert	10 days	Sun 06/19/22	Tue 06/28/22	[Gantt bar from Oct 1 to Oct 11]														
30	Reinstate of culvert	14 days	Wed 06/29/22	Tue 07/12/22	[Gantt bar from Oct 1 to Oct 15]														
31	Reinstate of seawall block	30 days	Wed 07/13/22	Thu 08/11/22	[Gantt bar from Oct 1 to Oct 31]														
32	Reinstate of seawall coping	45 days	Fri 08/12/22	Sun 09/25/22	[Gantt bar from Oct 1 to Nov 15]														
33	In-situ casting for top part of intake chamber	154 days	Sun 06/19/22	Sat 11/19/22	[Gantt bar from Oct 1 to Nov 19]														
34	Backfilling upto +2.80mPD (ie gap between pipepile & intake precast)	10 days	Sun 06/19/22	Tue 06/28/22	[Gantt bar from Oct 1 to Oct 11]														
35	External wall upto +5.70mPD	30 days	Thu 06/23/22	Fri 07/22/22	[Gantt bar from Oct 1 to Oct 31]														
36	Dewatering	6 days	Sat 07/23/22	Thu 07/28/22	[Gantt bar from Oct 1 to Oct 6]														
37	Install bottom layer internal precast panel	10 days	Fri 07/29/22	Sun 08/07/22	[Gantt bar from Oct 1 to Oct 11]														
38	Cast in-situ for bottom internal wall	12 days	Mon 08/08/22	Fri 08/19/22	[Gantt bar from Oct 1 to Oct 13]														
39	Install middle layer internal precast panel	10 days	Tue 08/16/22	Thu 08/25/22	[Gantt bar from Oct 1 to Oct 11]														
40	Cast in-situ for middle internal wall	12 days	Fri 08/26/22	Tue 09/06/22	[Gantt bar from Oct 1 to Oct 13]														
41	Install top layer internal precast panel	10 days	Sat 09/03/22	Mon 09/12/22	[Gantt bar from Oct 1 to Oct 11]														
42	Cast in-situ for top internal wall	12 days	Tue 09/13/22	Sat 09/24/22	[Gantt bar from Oct 1 to Oct 13]														
43	Cast in-situ for top slab	18 days	Sun 09/25/22	Wed 10/12/22	[Gantt bar from Oct 1 to Oct 19]														
44	Falsework removal	18 days	Thu 10/27/22	Sun 11/13/22	[Gantt bar from Oct 1 to Oct 19]														
45	Upstand wall and gantry railing footing	10 days	Thu 10/13/22	Sat 10/22/22	[Gantt bar from Oct 1 to Oct 11]														
46	Steel and Metal Works	21 days	Sun 10/30/22	Sat 11/19/22	[Gantt bar from Oct 1 to Oct 21]														

Project: 19-83014 - No. 5 Intake and Cable Br
 Date: 15 Mar 2022
 Rev. 6 - Programme for No. 5 C.W. Intake

Task		Summary		External Milestone		Inactive Summary		Manual Summary Rollup		Finish-only	
Split		Project Summary		Inactive Task		Manual Task		Manual Summary		Progress	
Milestone		External Tasks		Inactive Milestone		Duration-only		Start-only		Deadline	

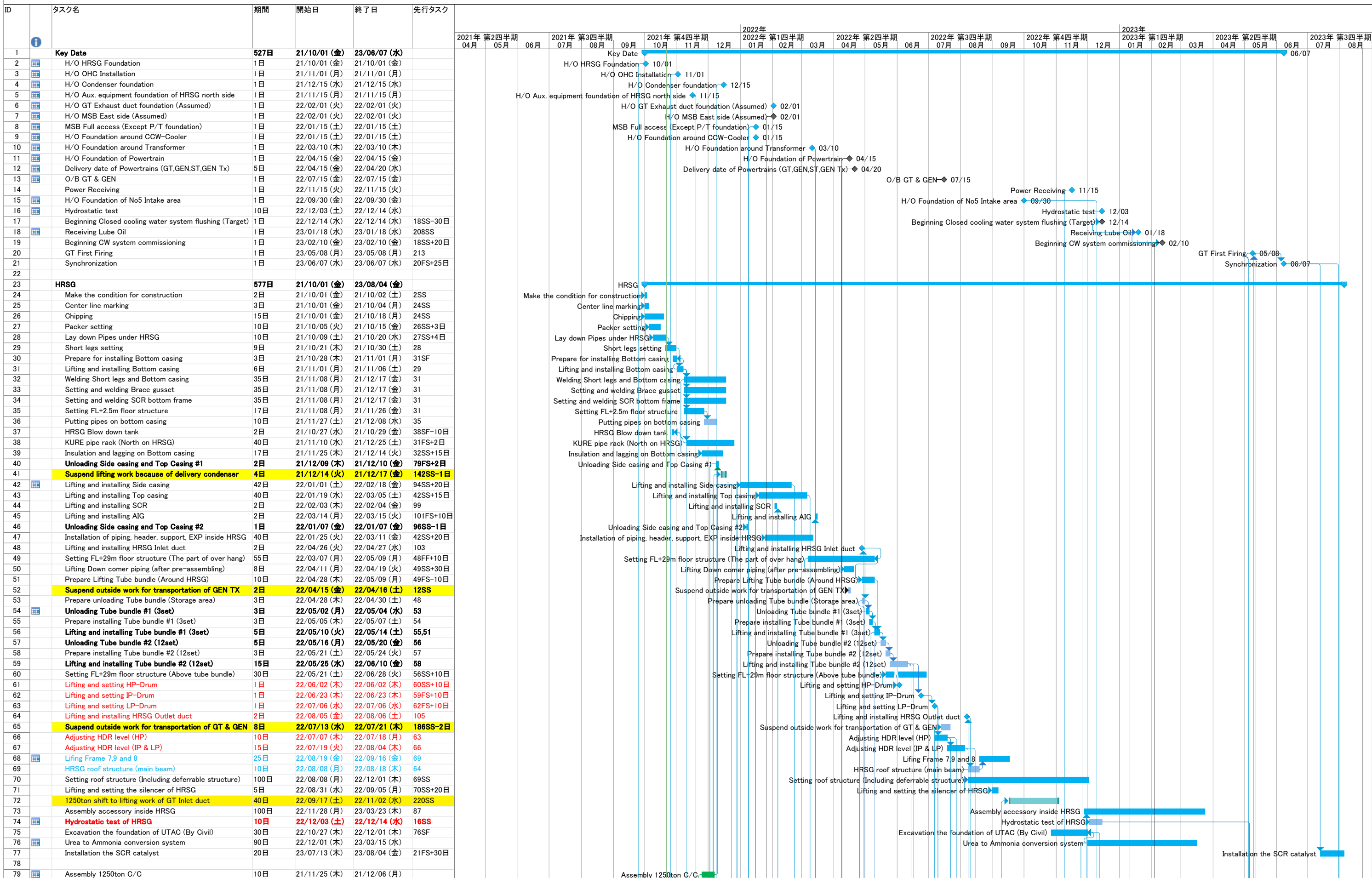
ID	Task Name	Duration	Start	Finish	September 2022														October 2022														November 2022													
					30	02	05	08	11	14	17	20	23	26	29	02	05	08	11	14	17	20	23	26	29	01	04	07	10	13	16	19	22	25	28											
1	19-83014 - Civil Works for No. 5 C.W. Intake and Cable Bridge at Lamma Power Station Extension	222 days	Thu 12/16/21	Thu 09/15/22	[Gantt bar spanning from Thu 12/16/21 to Thu 09/15/22]																																									
2	Cable Bridge	222 days	Thu 12/16/21	Thu 09/15/22	[Gantt bar spanning from Thu 12/16/21 to Thu 09/15/22]																																									
3	✓ Precast beam installation	67 days	Thu 12/16/21	Thu 03/10/22	[Gantt bar spanning from Thu 12/16/21 to Thu 03/10/22]																																									
4	Construction of Diaphragm Beams	41 days	Fri 03/11/22	Tue 05/03/22	[Gantt bar spanning from Fri 03/11/22 to Tue 05/03/22]																																									
5	DB10 & DB11	17 days	Fri 03/11/22	Wed 03/30/22	[Gantt bar spanning from Fri 03/11/22 to Wed 03/30/22]																																									
6	Rebar Bending	6 days	Fri 03/11/22	Thu 03/17/22	[Gantt bar spanning from Fri 03/11/22 to Thu 03/17/22]																																									
7	Rebar Fixing	4 days	Fri 03/18/22	Tue 03/22/22	[Gantt bar spanning from Fri 03/18/22 to Tue 03/22/22]																																									
8	Fwk Erection	4 days	Wed 03/23/22	Sat 03/26/22	[Gantt bar spanning from Wed 03/23/22 to Sat 03/26/22]																																									
9	Concreting	1 day	Mon 03/28/22	Mon 03/28/22	[Gantt bar spanning from Mon 03/28/22 to Mon 03/28/22]																																									
10	Fwk Removal	2 days	Tue 03/29/22	Wed 03/30/22	[Gantt bar spanning from Tue 03/29/22 to Wed 03/30/22]																																									
11	DB8 & DB9	17 days	Mon 03/28/22	Wed 04/20/22	[Gantt bar spanning from Mon 03/28/22 to Wed 04/20/22]																																									
12	Rebar Bending	6 days	Mon 03/28/22	Sat 04/02/22	[Gantt bar spanning from Mon 03/28/22 to Sat 04/02/22]																																									
13	Rebar Fixing	4 days	Mon 04/04/22	Fri 04/08/22	[Gantt bar spanning from Mon 04/04/22 to Fri 04/08/22]																																									
14	Fwk Erection	4 days	Sat 04/09/22	Wed 04/13/22	[Gantt bar spanning from Sat 04/09/22 to Wed 04/13/22]																																									
15	Concreting	1 day	Thu 04/14/22	Thu 04/14/22	[Gantt bar spanning from Thu 04/14/22 to Thu 04/14/22]																																									
16	Fwk Removal	2 days	Tue 04/19/22	Wed 04/20/22	[Gantt bar spanning from Tue 04/19/22 to Wed 04/20/22]																																									
17	DB7	13 days	Thu 04/14/22	Tue 05/03/22	[Gantt bar spanning from Thu 04/14/22 to Tue 05/03/22]																																									
18	Rebar Bending	4 days	Thu 04/14/22	Thu 04/21/22	[Gantt bar spanning from Thu 04/14/22 to Thu 04/21/22]																																									
19	Rebar Fixing	3 days	Fri 04/22/22	Mon 04/25/22	[Gantt bar spanning from Fri 04/22/22 to Mon 04/25/22]																																									
20	Fwk Erection	3 days	Tue 04/26/22	Thu 04/28/22	[Gantt bar spanning from Tue 04/26/22 to Thu 04/28/22]																																									
21	Concreting	1 day	Fri 04/29/22	Fri 04/29/22	[Gantt bar spanning from Fri 04/29/22 to Fri 04/29/22]																																									
22	Fwk Removal	2 days	Sat 04/30/22	Tue 05/03/22	[Gantt bar spanning from Sat 04/30/22 to Tue 05/03/22]																																									
23	Construction of 200mm thk RC middle slab	35 days	Thu 03/31/22	Tue 05/17/22	[Gantt bar spanning from Thu 03/31/22 to Tue 05/17/22]																																									
24	Slab (6000+8581 Length)	11 days	Thu 03/31/22	Wed 04/13/22	[Gantt bar spanning from Thu 03/31/22 to Wed 04/13/22]																																									
25	Install left-in sub-frame	6 days	Thu 03/31/22	Thu 04/07/22	[Gantt bar spanning from Thu 03/31/22 to Thu 04/07/22]																																									
26	Rebar Bending	2 days	Fri 04/08/22	Sat 04/09/22	[Gantt bar spanning from Fri 04/08/22 to Sat 04/09/22]																																									
27	Rebar Fixing	2 days	Mon 04/11/22	Tue 04/12/22	[Gantt bar spanning from Mon 04/11/22 to Tue 04/12/22]																																									
28	Concreting	1 day	Wed 04/13/22	Wed 04/13/22	[Gantt bar spanning from Wed 04/13/22 to Wed 04/13/22]																																									
29	Slab (8581 + 8581 Length)	11 days	Thu 04/21/22	Wed 05/04/22	[Gantt bar spanning from Thu 04/21/22 to Wed 05/04/22]																																									
30	Install left-in sub-frame	6 days	Thu 04/21/22	Wed 04/27/22	[Gantt bar spanning from Thu 04/21/22 to Wed 04/27/22]																																									
31	Rebar Bending	2 days	Thu 04/28/22	Fri 04/29/22	[Gantt bar spanning from Thu 04/28/22 to Fri 04/29/22]																																									
32	Rebar Fixing	2 days	Sat 04/30/22	Tue 05/03/22	[Gantt bar spanning from Sat 04/30/22 to Tue 05/03/22]																																									
33	Concreting	1 day	Wed 05/04/22	Wed 05/04/22	[Gantt bar spanning from Wed 05/04/22 to Wed 05/04/22]																																									
34	Slab (8581 + 6000 Length)	11 days	Wed 05/04/22	Tue 05/17/22	[Gantt bar spanning from Wed 05/04/22 to Tue 05/17/22]																																									
35	Install left-in sub-frame	6 days	Wed 05/04/22	Wed 05/11/22	[Gantt bar spanning from Wed 05/04/22 to Wed 05/11/22]																																									
36	Rebar Bending	2 days	Thu 05/12/22	Fri 05/13/22	[Gantt bar spanning from Thu 05/12/22 to Fri 05/13/22]																																									
37	Rebar Fixing	2 days	Sat 05/14/22	Mon 05/16/22	[Gantt bar spanning from Sat 05/14/22 to Mon 05/16/22]																																									
38	Concreting	1 day	Tue 05/17/22	Tue 05/17/22	[Gantt bar spanning from Tue 05/17/22 to Tue 05/17/22]																																									
39	Remedial Work to DB11	28 days	Thu 05/12/22	Tue 06/14/22	[Gantt bar spanning from Thu 05/12/22 to Tue 06/14/22]																																									
40	Construction of remaining 200mm thk. RC middle slab	7 days	Wed 06/15/22	Wed 06/22/22	[Gantt bar spanning from Wed 06/15/22 to Wed 06/22/22]																																									
41	Stage 2 PT stressing	6 days	Wed 06/29/22	Tue 07/05/22	[Gantt bar spanning from Wed 06/29/22 to Tue 07/05/22]																																									
42	Construction of Abutment at LPS (PCB 6-12)	22 days	Wed 07/06/22	Sat 07/30/22	[Gantt bar spanning from Wed 07/06/22 to Sat 07/30/22]																																									
43	Construction of End Beam EB1 with Shear Key NSK1	12 days	Wed 07/06/22	Tue 07/19/22	[Gantt bar spanning from Wed 07/06/22 to Tue 07/19/22]																																									
44	Construction of Abutment Wall AW2	10 days	Wed 07/20/22	Sat 07/30/22	[Gantt bar spanning from Wed 07/20/22 to Sat 07/30/22]																																									
45	Construction of Abutment at LMX (PCB 6-12)	38 days	Wed 07/06/22	Thu 08/18/22	[Gantt bar spanning from Wed 07/06/22 to Thu 08/18/22]																																									
46	Construction of late cast portion of pile cap PC6	12 days	Wed 07/06/22	Tue 07/19/22	[Gantt bar spanning from Wed 07/06/22 to Tue 07/19/22]																																									
47	Construction of End Beam EB2	10 days	Wed 07/20/22	Sat 07/30/22	[Gantt bar spanning from Wed 07/20/22 to Sat 07/30/22]																																									
48	Construction of Abutment Wall AW3	8 days	Mon 08/01/22	Tue 08/09/22	[Gantt bar spanning from Mon 08/01/22 to Tue 08/09/22]																																									
49	Construction of Abutment Wall AW1 for Maintenance Chamfer	8 days	Wed 07/20/22	Thu 07/28/22	[Gantt bar spanning from Wed 07/20/22 to Thu 07/28/22]																																									
50	Cast mass concrete retaining wall	8 days	Wed 08/10/22	Thu 08/18/22	[Gantt bar spanning from Wed 08/10/22 to Thu 08/18/22]																																									
51	Construction of Abutment at LPS (PCB 1-5)	93 days	Tue 05/03/22	Sat 08/20/22	[Gantt bar spanning from Tue 05/03/22 to Sat 08/20/22]																																									
52	Construction of Shear Key NSK2	10 days	Mon 05/16/22	Thu 05/26/22	[Gantt bar spanning from Mon 05/16/22 to Thu 05/26/22]																																									
53	Construction of End Beam EB1 with Shear Key NSK1	12 days	Fri 05/27/22	Fri 06/10/22	[Gantt bar spanning from Fri 05/27/22 to Fri 06/10/22]																																									
54	Construction of Abutment Wall AW2	10 days	Sat 06/11/22	Wed 06/22/22	[Gantt bar spanning from Sat 06/11/22 to Wed 06/22/22]																																									
55	Construction of Type 1 Retaining Wall	1 day	Tue 05/03/22	Tue 05/03/22	[Gantt bar spanning from Tue 05/03/22 to Tue 05/03/22]																																									
56	Wall	1 day	Tue 05/03/22	Tue 05/03/22	[Gantt bar spanning from Tue 05/03/22 to Tue 05/03/22]																																									
57	Concreting	1 day	Tue 05/03/22	Tue 05/03/22	[Gantt bar spanning from Tue 05/03/22 to Tue 05/03/22]																																									
58	Construction of Type 2 Retaining Wall	24 days	Sat 05/07/22	Mon 06/06/22	[Gantt bar spanning from Sat 05/07/22 to Mon 06/06/22]																																									
59	Mass Concrete Fill	8 days	Sat 05/07/22	Tue 05/17/22	[Gantt bar spanning from Sat 05/07/22 to Tue 05/17/22]																																									
60	Bottom Slab	7 days	Wed 05/18/22	Wed 05/25/22	[Gantt bar spanning from Wed 05/18/22 to Wed 05/25/22]																																									
61	Rebar Fixing	3 days	Wed 05/18/22	Fri 05/20/22	[Gantt bar spanning from Wed 05/18/22 to Fri 05/20/22]																																									
62	Fwk Erection	3 days	Sat 05/21/22	Tue 05/24/22	[Gantt bar spanning from Sat 05/21/22 to Tue 05/24/22]																																									
63	Concreting	1 day	Wed 05/25/22	Wed 05/25/22	[Gantt bar spanning from Wed 05/25/22 to Wed 05/25/22]																																									
64	Wall	9 days	Thu 05/26/22	Mon 06/06/22	[Gantt bar spanning from Thu 05/26/22 to Mon 06/06/22]																																									
65	Rebar Fixing	4 days	Thu 05/26/22	Mon 05/30/22	[Gantt bar spanning from Thu 05/26/22 to Mon 05/30/22]																																									
66	Fwk Erection	4 days	Tue 05/31/22	Sat 06/04/22	[Gantt bar spanning from Tue 05/31/22 to Sat 06/04/22]																																									
67	Concreting	1 day	Mon 06/06/22	Mon 06/06/22	[Gantt bar spanning from Mon 06/06/22 to Mon 06/06/22]																																									
68	Rockfill	7 days	Tue 06/07/22	Tue 06/14/22	[Gantt bar spanning from Tue 06/07/22 to Tue 06/14/22]																																									
69	Cable trench	58 days	Wed 06/15/22	Sat 08/20/22	[Gantt bar spanning from Wed 06/15/22 to Sat 08/20/22]																																									
70	Trench 275-22 & 25	28 days	Wed 06/15/22	Sat 07/16/22	[Gantt bar spanning from Wed 06/15/22 to Sat 07/16/22]																																									
71	Remaining Trenches	30 days	Mon 07/18/22	Sat 08/20/22	[Gantt bar spanning from Mon 07/18/22 to Sat 08/20/22]																																									
72	Construction of Abutment at LMX (PCB 1-5)	97 days	Thu 04/28/22	Mon 08/22/22	[Gantt bar spanning from Thu 04/28/22 to Mon 08/22/22]																																									
73	Construction of Shear Key SSK1	10 days	Mon 05/16/22	Thu 05/26/22	[Gantt bar spanning from Mon 05/16/22 to Thu 05/26/22]																																									
74	Construction of End Beam EB2	10 days	Fri 05/27/22	Wed 06/08/22	[Gantt bar spanning from Fri 05/27/22 to Wed 06/08/22]																																									
75	Construction of Abutment Wall AW3	8 days	Thu 06/09/22	Fri 06/17/22	[Gantt bar spanning from Thu 06/09/22 to Fri 06/17/22]																																									
76	Construction of Abutment Wall AW1 for Maintenance Chamfer	8 days	Sat 06/18/22	Mon 06/27/22	[Gantt bar spanning from Sat 06/18/22 to Mon 06/27/22]																																									
77	Cast mass concrete retaining wall	8 days	Sat 06/18/22	Mon 06/27/22	[Gantt bar spanning from Sat 06/18/22 to Mon 06/27/22]																																									
78	Cast Planter end wall	9 days	Thu 04/28/22	Tue 05/10/22	[Gantt bar spanning from Thu 04/28/22 to Tue 05/10/22]																																									
79	Cable Trench	51 days	Fri 06/24/22	Mon 08/22/22	[Gantt bar spanning from Fri 06/24/22 to Mon 08/22/22]																																									
80	Trench 275-22 & 25	21 days	Fri 06/24/22	Mon 07/18/22	[Gantt bar spanning from Fri 06/24/22 to Mon 07/18/22]																																									
81	Remaining Trenches	30 days	Tue 07/19/22	Mon 08/22/22	[Gantt bar spanning from Tue 07/19/22 to Mon 08/22/22]																																									
82	Installation of Precast Panel	48 days	Sat 06/11/22	Fri 08/05/22	[Gantt bar spanning from Sat 06/11/22 to Fri 08/05/22]																																									
83	Stormwater Drainage work	26 days	Wed 07/06/22	Thu 08/04/22	[Gantt bar spanning from Wed 07/06/22 to Thu 08/04/22]																																									
84	E&M work	26 days	Wed 07/06/22	Thu 08/04/22	[Gantt bar spanning from Wed 07/06/22 to Thu 08/04/22]																																									
85	Sand Backfilling	12 days	Fri 08/05/22	Thu 08/18/22	[Gantt bar spanning from Fri 08/05/22 to Thu 08/18/22]																																									
86	Road paving works	12 days	Fri 08/19/22	Thu 09/01/22	[Gantt bar spanning from Fri 08/19/22 to Thu 09/01/22]																																									
87	Miscellaneous works	12 days	Fri 09/02/22	Thu 09/15/22	[Gantt bar spanning from Fri 09/02/22 to Thu 09/15/22]																																									

Project: 19-83014 - No. 5 Intake and Cable Bridge
 Date: 4 May 2022
 Rev. 7 - Programme for Cable Bridge

Task Split

Legend: Milestone (blue diamond), Project Summary (blue bar), External Milestone (grey bar), Inactive Milestone (grey diamond), Manual Task (green bar), Manual Summary Rollup (green bar), Start-only (blue bar), Progress (black bar), Deadline (green arrow), Summary (dotted bar), External Tasks (black bar), Inactive Task (grey bar), Inactive Summary (grey bar), Duration-only (grey bar), Manual Summary (blue bar), Finish-only (black bar).

Construction Schedule of Unit-12



NOTE
 1. The key date is subjected in the KOM held on 30th-Sep.
 2. The east area on the MSB is assumed to be handovered before B-Feb-2022 according to the above key date changed.

3.Considered the affection of KURE's schedule belows;
 i) Because of delaying the side casing,installation Inlet duct is postponed.
 ii) Because of delivery 12 TBs in one time, no enough area for pre-ass'y Outlet duct and GT Inlet duct on schedule.

Monthly Waste Flow Table for August 2022

Project: Lamma Power Station Extension Civil and Building Works for Unit L12

Contractor: Paul Y. Construction Company, Limited

Record by: Ben Lam

Year of Record: 2020, 2021 & 2022

MM.YYYY	Actual Quantities of Inert C&D Materials Generated Monthly								Actual Quantities of Non-inert C&D Materials Generated Monthly						
	Excavated Materials				Non-excavated Materials				Metals (steel bar / metal strip) ⁽¹⁾	Metals (aluminum can) ⁽¹⁾	Paper / cardboard packaging ⁽¹⁾	Plastics ^{(1) & (4)}	Chemical waste (wasted lubricant oil/oil container)	Chemical waste (wasted lubricant oil/oil container)	Other, e.g. general refuse
	Disposed in Public Fill	Disposed in Sorting Facilities	Others (e.g Reused in the Contract / Other Projects)	Broken Concrete or Construction Waste Collected by Recycled Company	Reused in the Contract	Reused in other Projects	Disposed in Public Fill	Disposed in Sorting Facilities							
(in '000kg)	(in '000kg)	(in '000kg)	(in '000kg)	(in '000kg)	(in '000kg)	(in '000kg)	(in '000kg)	(in '000kg)	(in '000kg)	(in '000kg)	(in '000kg)	(in '000L)	(in '000kg)	(in '000kg)	
Dec 2020	0.00	0.00	0.00	0.00	0.00	0.00	0.00	0.00	0.00	0.00	0.00	0.00	0.00	0.00	0.00
Jan 2021	0.00	0.00	21020.16	0.00	0.00	0.00	0.00	0.00	8.82	0.00	0.00	0.00	0.00	0.00	0.00
Feb 2021	0.00	0.00	18083.97	0.00	0.00	0.00	0.00	0.00	18.25	0.00	0.25	0.00	0.00	0.00	0.00
Mar 2021	0.00	0.00	9048.21	0.00	0.00	0.00	0.00	0.00	7.69	0.00	0.00	0.00	0.00	0.00	2.61
Apr 2021	0.00	0.00	3205.15	0.00	0.00	0.00	0.00	0.00	28.08	0.00	0.00	0.00	0.00	0.00	14.45
May 2021	0.00	0.00	6267.49	0.00	0.00	0.00	0.00	0.00	34.68	0.00	0.00	0.00	0.00	0.00	0.00
Jun 2021	0.00	0.00	6555.38	0.00	0.00	0.00	0.00	0.00	26.87	0.00	0.00	0.00	0.00	0.00	25.03
Jul 2021	0.00	0.00	0.00	0.00	0.00	0.00	0.00	0.00	16.95	0.00	0.00	0.00	0.00	0.00	10.97
Aug 2021	0.00	0.00	0.00	0.00	0.00	0.00	0.00	0.00	14.55	0.00	0.00	0.00	0.00	0.00	3.49
Sep 2021	0.00	0.00	0.00	0.00	0.00	0.00	0.00	0.00	0.00	0.00	0.00	0.40	0.28	0.00	49.15
Oct 2021	0.00	0.00	0.00	0.00	0.00	0.00	0.00	0.00	17.47	0.00	0.00	0.00	0.00	0.00	62.08
Nov 2021	0.00	0.00	0.00	0.00	0.00	0.00	0.00	0.00	8.08	0.00	0.00	0.00	0.00	0.00	34.17
Dec 2021	0.00	0.00	0.00	0.00	0.00	0.00	0.00	0.00	10.36	0.00	0.00	0.00	0.00	0.00	52.18
Jan 2022	0.00	0.00	0.00	0.00	0.00	0.00	0.00	0.00	16.93	0.00	0.00	0.00	0.00	0.00	42.73
Feb 2022	0.00	0.00	0.00	0.00	0.00	0.00	0.00	0.00	0.00	0.00	0.00	0.00	0.00	0.00	8.62
Mar 2022	0.00	0.00	0.00	0.00	0.00	0.00	0.00	0.00	24.21	0.00	0.000	0.00	0.00	0.00	25.70
Apr 2022	0.00	0.00	0.00	0.00	0.00	0.00	0.00	5.51	0.00	0.00	0.00	0.00	0.00	0.00	52.83
May 2022	0.00	0.00	0.00	0.00	0.00	0.00	0.00	0.00	15.36	0.00	0.00	0.00	0.00	0.00	38.60
Jun 2022	0.00	0.00	6645.22	0.00	0.00	0.00	0.00	5.70	0.00	0.00	0.000	0.00	0.00	0.00	37.38
Jul 2022	0.00	0.00	4710.98	0.00	0.00	0.00	0.00	6.58	11.55	0.00	0.000	0.00	0.00	0.00	25.22
Aug 2022	0.00	0.00	0.00	0.00	0.00	0.00	0.00	0.00	0.00	0.00	0.000	0.00	0.60	0.42	21.74
Total	0.00	0.00	75536.55	0.00	0.00	0.00	0.00	17.79	259.85	0.00	0.25	0.00	1.00	0.70	506.95

Total Inert C&D Waste Materials Generated	Non-inert C&D Materials		
	C&D Materials Recycled	C&D Waste Disposed of at Landfill	Chemical Waste
75554.34 tonnes	260.10 tonnes	506.95 tonnes	0.70 tonnes

Where (A) Inert C&D materials include bricks, concrete, building debris, rubble and excavated spoil. In total, 75554.34 tonnes of inert C&D material were generated from the Project, of which 75536.55 tonnes were reused in this and other contracts, and the remaining 5.51 tonnes were disposed as public fill to Fill Banks / Sorting Facilities.

(b) Non-inert C&D materials (construction wastes) include metals, paper / cardboard packaging waste, plastics and other wastes such as general refuse. Metals generated from the Project were grouped into construction wastes as the materials were not disposed of with others at the public fill.

(c) 0 kg of metals, 0 kg of papers/ cardboard packing and 0 kg of plastics were sent to recyclers for recycling during the reporting period.

(d) Construction wastes other than metals, paper/cardboard packaging, plastics and chemicals were disposed of at Landfill.

Notes:

- (1) metal, paper & plastic were collected by recycler
- (2) The performance target of waste recycling are specified in the Contract.
- (3) The waste flow table shall also include C&D materials that are specified in the Contract to be imported for use at the Site.
- (4) Plastics refer to plastic bottles/ containers, plastic/ foam from packaging material.
- (5) Broken concrete for recycling into aggregates.
- (6) Disposal of inert waste to public fill or sorting facilities will NOT be considered as recycled waste.

Monthly Waste Flow Table for August 2022

Project: Civil Works for No. 5 C.W. Intake and Cable Bridge at Lamma Power Station Extension

Contractor: Paul Y. Construction Company, Limited

Record by: Ben Lam

Year of Record: 2020, 2021 & 2022

MM.YYYY	Actual Quantities of Inert C&D Materials Generated Monthly								Actual Quantities of Non-inert C&D Materials Generated Monthly						
	Excavated Materials				Non-excavated Materials				Metals (steel bar / metal strip) ⁽¹⁾	Metals (aluminum can) ⁽¹⁾	Paper / cardboard packaging ⁽¹⁾	Plastics ^{(1) & (4)}	Chemical waste (wasted lubricant oil/oil container)	Chemical waste (wasted lubricant oil/oil container)	Other, e.g. general refuse
	Disposed in Public Fill	Disposed in Sorting Facilities	Others (e.g. Reused in the Contract / Other Projects)	Broken Concrete or Construction Waste Collected by Recycled Company	Reused in the Contract	Reused in other Projects	Disposed in Public Fill	Disposed in Sorting Facilities							
	(in '000kg)	(in '000kg)	(in '000kg)	(in '000kg)	(in '000kg)	(in '000kg)	(in '000kg)	(in '000kg)							
Oct 2020	0.00	0.00	0.00	0.00	0.00	0.00	0.00	0.00	0.00	0.00	0.00	0.00	0.00	0.00	0.00
Nov 2020	0.00	0.00	0.00	0.00	0.00	0.00	0.00	0.00	0.00	0.00	0.00	0.00	0.00	0.00	0.00
Dec 2020	0.00	0.00	0.00	0.00	0.00	0.00	0.00	0.00	4.21	0.00	0.00	0.00	0.00	0.00	0.00
Jan 2021	0.00	0.00	0.00	0.00	0.00	0.00	0.00	0.00	0.00	0.00	0.00	0.00	0.00	0.00	0.00
Feb 2021	0.00	0.00	0.00	0.00	0.00	0.00	0.00	0.00	0.00	0.00	0.00	0.00	0.00	0.00	0.00
Mar 2021	0.00	0.00	0.00	0.00	0.00	0.00	0.00	0.00	0.00	0.00	0.00	0.00	0.00	0.00	7.49
Apr 2021	0.00	0.00	0.00	0.00	0.00	0.00	0.00	0.00	0.00	0.00	0.00	0.60	0.42	4.85	
May 2021	0.00	0.00	0.00	0.00	0.00	0.00	0.00	0.00	0.00	0.00	0.00	0.00	0.00	0.00	22.61
Jun 2021	0.00	0.00	0.00	0.00	0.00	0.00	0.00	0.00	0.00	0.00	0.00	0.00	0.00	0.00	0.00
Jul 2021	0.00	0.00	0.00	0.00	0.00	0.00	0.00	0.00	0.00	0.00	0.00	0.00	0.00	0.00	0.00
Aug 2021	0.00	0.00	0.00	0.00	0.00	0.00	0.00	0.00	0.00	0.00	0.00	0.00	0.00	0.00	0.00
Sep 2021	0.00	0.00	0.00	0.00	0.00	0.00	0.00	0.00	0.00	0.00	0.00	0.00	0.00	0.00	37.84
Oct 2021	0.00	0.00	0.00	0.00	0.00	0.00	0.00	0.00	0.00	0.00	0.00	0.00	0.00	0.00	24.93
Nov 2021	0.00	0.00	0.00	0.00	0.00	0.00	0.00	0.00	0.00	0.00	0.00	0.00	0.00	0.00	0.00
Dec 2021	0.00	0.00	0.00	0.00	0.00	0.00	0.00	0.00	0.00	0.00	0.00	0.00	0.00	0.00	0.00
Jan 2022	0.00	0.00	0.00	0.00	0.00	0.00	0.00	0.00	0.00	0.00	0.000	0.00	0.00	0.00	46.25
Feb 2022	0.00	0.00	0.00	0.00	0.00	0.00	0.00	0.00	0.00	0.00	0.00	0.00	0.00	0.00	13.45
Mar 2022	0.00	0.00	0.00	0.00	0.00	0.00	0.00	0.00	0.00	0.00	0.00	0.00	0.00	0.00	29.86
Apr 2022	0.00	0.00	15076.75	0.00	0.00	0.00	0.00	10.27	0.00	0.00	0.000	0.00	0.00	0.00	43.60
May 2022	0.00	0.00	29148.95	0.00	0.00	0.00	0.00	0.00	0.00	0.00	0.000	0.00	0.00	0.00	54.64
Jun 2022	0.00	0.00	0.00	0.00	0.00	0.00	0.00	0.00	0.00	0.00	0.000	0.00	0.00	0.00	11.79
Jul 2022	0.00	0.00	0.00	0.00	0.00	0.00	0.00	24.04	0.00	0.00	0.000	0.00	0.00	0.00	35.90
Aug 2022	0.00	0.00	0.00	0.00	0.00	0.00	0.00	0.00	0.00	0.00	0.000	0.00	0.00	0.00	41.91
Total	0.00	0.00	44225.70	0.00	0.00	0.00	0.00	34.31	4.21	0.00	0.00	0.00	0.60	0.42	375.12

Total Inert C&D Waste Materials Generated	Non-inert C&D Materials		
	C&D Materials Recycled	C&D Waste Disposed of at Landfill	Chemical Waste
44260.01 tonnes	4.21 tonnes	375.12 tonnes	0.42 tonnes

Where (A) Inert C&D materials include bricks, concrete, building debris, rubble and excavated spoil. In total, 44260.01 tonnes of inert C&D material were generated from the Project, of which 44225.70 tonnes were reused in this and other contracts, and the remaining 10.27 tonnes were disposed as public fill to Fill Banks / Sorting Facilities.

(b) Non-inert C&D materials (construction wastes) include metals, paper / cardboard packaging waste, plastics and other wastes such as general refuse. Metals generated from the Project were grouped into construction wastes as the materials were not disposed of with others at the public fill.

(c) 0 kg of metals, 0 kg of papers/ cardboard packing and 0 kg of plastics were sent to recyclers for recycling during the reporting period.

(d) Construction wastes other than metals, paper/cardboard packaging, plastics and chemicals were disposed of at Landfill.

- Notes:
- (1) metal, paper & plastic were collected by recycler
 - (2) The performance target of waste recycling are specified in the Contract.
 - (3) The waste flow table shall also include C&D materials that are specified in the Contract to be imported for use at the Site.
 - (4) Plastics refer to plastic bottles/ containers, plastic/ foam from packaging material.
 - (5) Broken concrete for recycling into aggregates.

