

○

M E M O

From Project Manager (North), CEDD
Ref. () In NDO-30-4175-ST79/02-M45-010
Tel. No. 3152 3536 Fax No. 3547 1658
E-mail tylou@cedd.gov.hk
Date 13 October 2023

To EIA Ordinance Register Office, EPD
(Attn.: Mr. David T. W. TSANG)
Your Ref. In Ax(1) to EP2/N1/A/27 Pt.10
dated 6 October 2023 Fax No.
Total Pages 1 + Encl.

PWP No. 458CL
Sha Tin New Town, Stage II – Construction of Road T3

Submission of As-built Drawings of Landscape Measures
(Environmental Permit No. EP-135/2002/K)

We refer to your memo dated 6 October 2023 and submit herewith three copies of the revised as-built drawings of landscape measures for the captioned Project with minor textual updates and addition of a key plan for your information and record in accordance with Clause 5.2 of the Environmental Permit No. EP-135/2002/K.

2. Should you have any queries or require any further information, please feel free to contact the undersigned at 3152 3536.

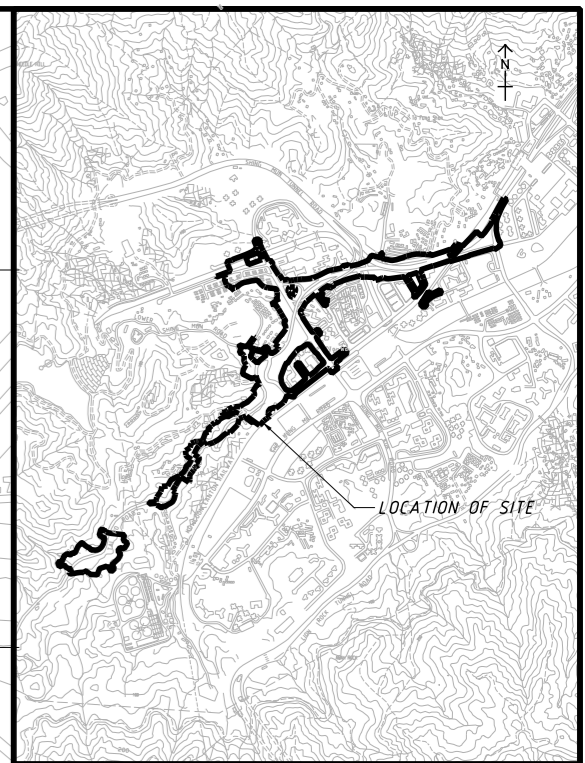
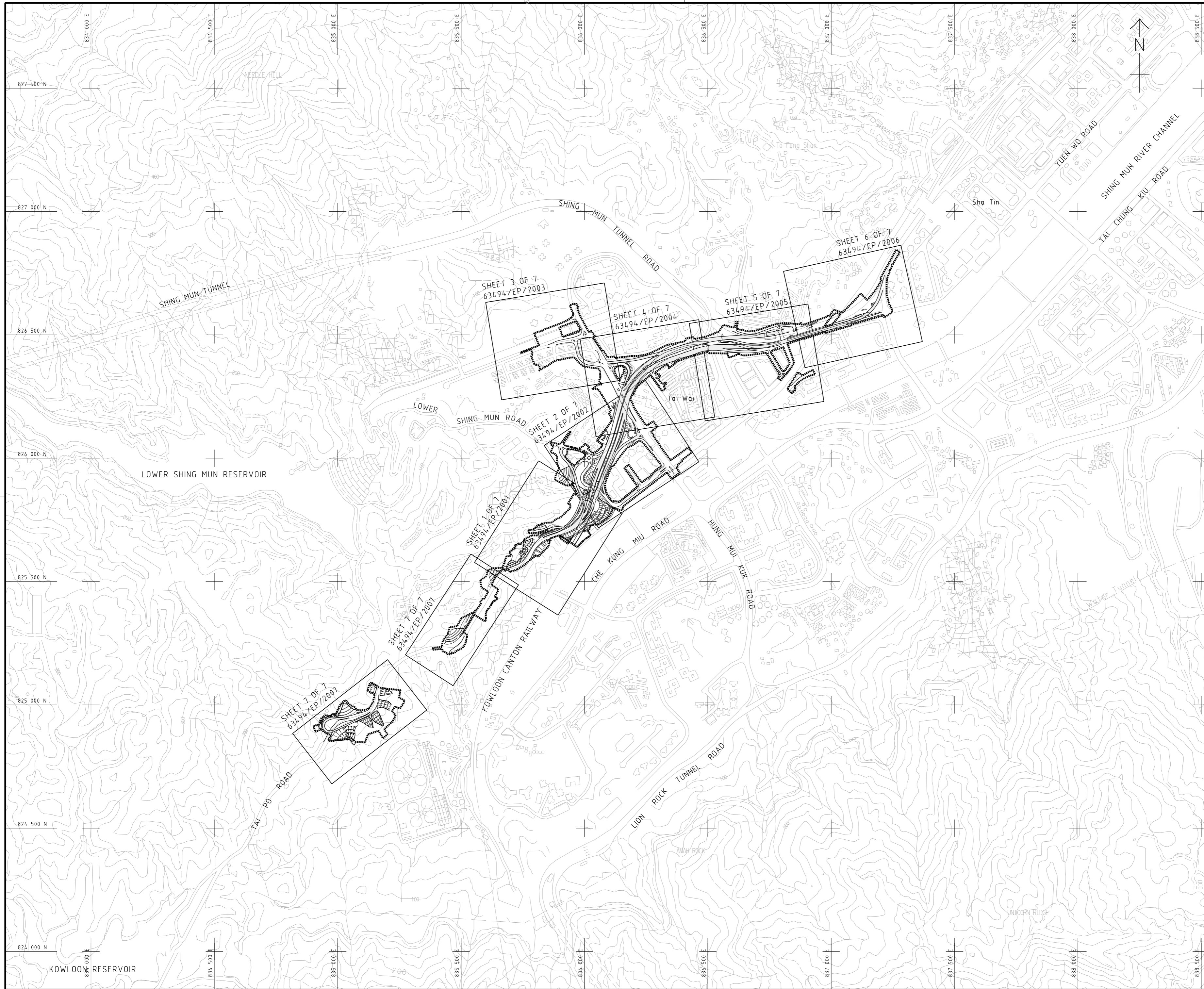


(T Y LOU)
for Project Manager (North)
Civil Engineering and Development Department

Encl.

c.c. CHE/NTE, HyD (Attn.: Mr. WAI Wah Kei)
CEO(Planning)2, LCSD (Attn.: Ms. TSAI Hiu Leong, Stephanie)

Internal
SE/9(N) to note in file



LOCATION PLAN
SCALE 1 : 20000

REV.	DESCRIPTION	E.C.	P.E.	DATE

Civil Engineering and Development Department
 土木工程發展處
 NT EAST DEVELOPMENT OFFICE
 新界東拓展處



SHA TIN NEW TOWN, STAGE II

ROAD T3 AND ASSOCIATED ROADWORKS

**KEY PLAN AND
LOCATION PLAN**



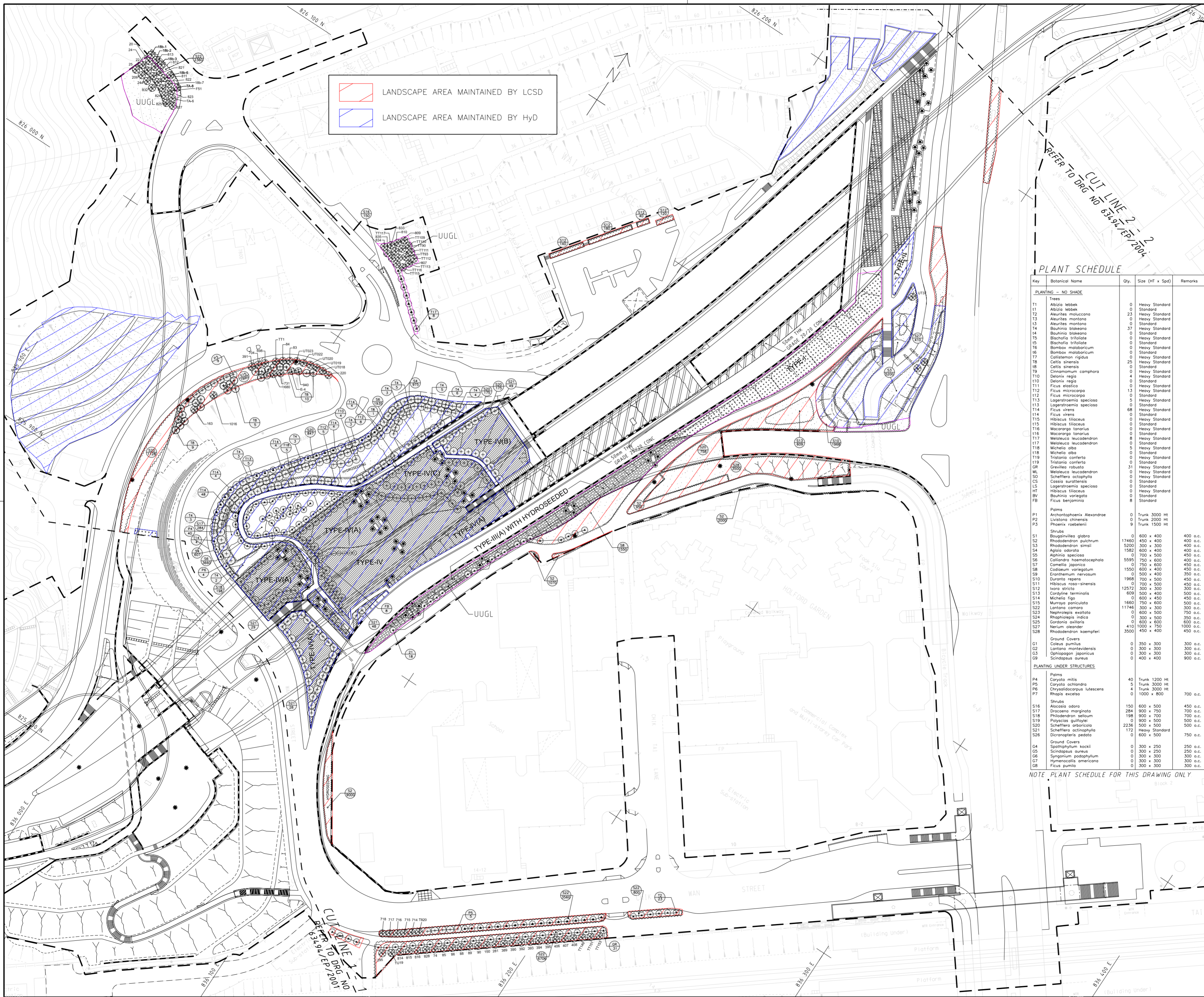
DRG.NO. 63494/EP/1000
 圖紙編號

DESIGNED BY K LEUNG CONTRACT NO. S179/02 P. OR APPROVED BY AKWL
 設計 審核

DRAWN BY YBS STATUS AS-BUILT DRAWING
 繪圖 階段

SCALE A0 15000 DIMENSIONS ARE IN METRES
 比例 尺寸單位

© COPYRIGHT RESERVED
 版權所有



 LANDSCAPE AREA MAINTAINED BY LCSD
 LANDSCAPE AREA MAINTAINED BY HyD

NOTE
 1. FOR GENERAL NOTES AND LEGEND, REFER TO DRG. NO. 63494/EP/2001.

PLANT SCHEDULE

Key	Botanical Name	Qty.	Size (Ht x Spd)	Remarks
PLANTING - NO SHADE				
Trees				
T1	Albizia lebbek	0	Heavy Standard	
I1	Albizia lebbek	0	Standard	
T2	Aleurites moluccana	23	Heavy Standard	
T3	Aleurites montana	0	Heavy Standard	
I3	Aleurites montana	0	Standard	
T4	Bauhinia blakeana	37	Heavy Standard	
I4	Bauhinia blakeana	0	Standard	
T5	Bischofia trifoliata	0	Heavy Standard	
I5	Bischofia trifoliata	0	Standard	
T6	Bombax malabaricum	0	Heavy Standard	
I6	Bombax malabaricum	0	Standard	
T7	Callistemon rigidus	0	Heavy Standard	
T8	Celtis sinensis	25	Heavy Standard	
I8	Celtis sinensis	0	Standard	
T9	Cinnamomum camphora	0	Heavy Standard	
I9	Cinnamomum camphora	0	Standard	
T10	Delonix regia	4	Heavy Standard	
I10	Delonix regia	0	Standard	
T11	Ficus elastica	0	Heavy Standard	
I11	Ficus elastica	13	Standard	
T12	Ficus microcarpa	0	Standard	
I12	Ficus microcarpa	0	Standard	
T13	Lagerstroemia speciosa	5	Heavy Standard	
I13	Lagerstroemia speciosa	0	Standard	
T14	Ficus virens	68	Heavy Standard	
I14	Ficus virens	0	Standard	
T15	Hibiscus tiliaceus	0	Heavy Standard	
I15	Hibiscus tiliaceus	0	Standard	
T16	Macaranga tonarius	0	Standard	
I16	Macaranga tonarius	0	Standard	
T17	Meibomia leucodendron	8	Heavy Standard	
I17	Meibomia leucodendron	0	Standard	
T18	Michelia alba	5	Heavy Standard	
I18	Michelia alba	0	Standard	
T19	Tristania conferta	0	Heavy Standard	
I19	Tristania conferta	0	Standard	
GR	Dreilindia conferta	31	Heavy Standard	
ML	Meibomia leucodendron	0	Heavy Standard	
CS	Cassia surattensis	0	Standard	
LS	Lagerstroemia speciosa	0	Standard	
HT	Hibiscus tiliaceus	0	Heavy Standard	
BV	Bauhinia variegata	0	Standard	
FB	Ficus benjamina	8	Standard	
Palm				
P1	Archontophoenix alexandree	0	Trunk 3000 HT	
P2	Livistona chinensis	0	Trunk 2000 HT	
P3	Phoenix roebelenii	9	Trunk 1500 HT	
Shrubs				
S1	Bougainvillea glabra	0	600 x 400	400 o.c.
S2	Rhododendron pulchrum	17460	450 x 400	400 o.c.
S3	Rhododendron simsii	5200	300 x 300	400 o.c.
S4	Aglaia odorata	1580	600 x 400	400 o.c.
S5	Albizia speciosa	0	700 x 500	450 o.c.
S6	Collandora haematocephala	5595	750 x 600	400 o.c.
S7	Camellia japonica	0	750 x 600	450 o.c.
S8	Codiaeum variegatum	1550	600 x 400	450 o.c.
S9	Eranthemum nervosum	0	500 x 400	350 o.c.
S10	Duroia repens	1965	700 x 500	450 o.c.
S11	Hibiscus rosa-sinensis	0	700 x 500	450 o.c.
S12	Nora shikita	12572	300 x 300	300 o.c.
S13	Cordylone terminalis	609	500 x 400	500 o.c.
S14	Michelia figo	0	600 x 450	450 o.c.
S15	Murraya paniculata	1660	750 x 600	500 o.c.
S22	Lantana camara	11746	300 x 300	300 o.c.
S23	Nephrolepis exaltata	0	800 x 500	750 o.c.
S24	Rhaphiolepis indica	0	300 x 500	350 o.c.
S25	Gordonia axillaris	0	600 x 600	600 o.c.
S27	Nerium oleander	410	1000 x 750	1000 o.c.
S28	Rhododendron koempferi	3500	450 x 400	450 o.c.
Ground Covers				
G1	Coleus pumilus	0	350 x 300	300 o.c.
G2	Lantana montevidensis	0	300 x 300	300 o.c.
G3	Diplazogon japonicus	0	300 x 300	300 o.c.
G9	Scindapsus aureus	0	400 x 400	900 o.c.
PLANTING UNDER STRUCTURES				
Palm				
P4	Coryola mitis	40	Trunk 1200 HT	
P5	Coryola ochlandra	5	Trunk 3000 HT	
P6	Chrysalidocarpus lutescens	4	Trunk 3000 HT	
P7	Rhapis excelsa	0	1000 x 800	700 o.c.
Shrubs				
S16	Alcaesia odora	150	600 x 500	450 o.c.
S17	Dracaena marginata	284	900 x 750	700 o.c.
S18	Philodendron sellitum	198	900 x 700	700 o.c.
S19	Polyscias guilfoylei	0	800 x 500	500 o.c.
S20	Schefflera arboricola	2236	500 x 500	500 o.c.
S21	Schefflera actinophylla	172	Heavy Standard	
S26	Dicranopteris pedata	0	600 x 500	750 o.c.
Ground Covers				
G4	Spathiphyllum kochii	0	300 x 250	250 o.c.
G5	Scindapsus aureus	0	300 x 250	250 o.c.
G6	Syngonium podophyllum	0	300 x 300	300 o.c.
G7	Hymenocallis americana	0	300 x 300	300 o.c.
G8	Ficus pumila	0	300 x 300	300 o.c.

NOTE PLANT SCHEDULE FOR THIS DRAWING ONLY

REV.	DESCRIPTION	DATE

Civil Engineering and Development Department
 土木工程發展處
 NT EAST DEVELOPMENT OFFICE
 新界東發展處

SHA TIN NEW TOWN, STAGE II
 ROAD T3 AND ASSOCIATED ROADWORKS
PLANTING PLAN
 SHEET 2 OF 7

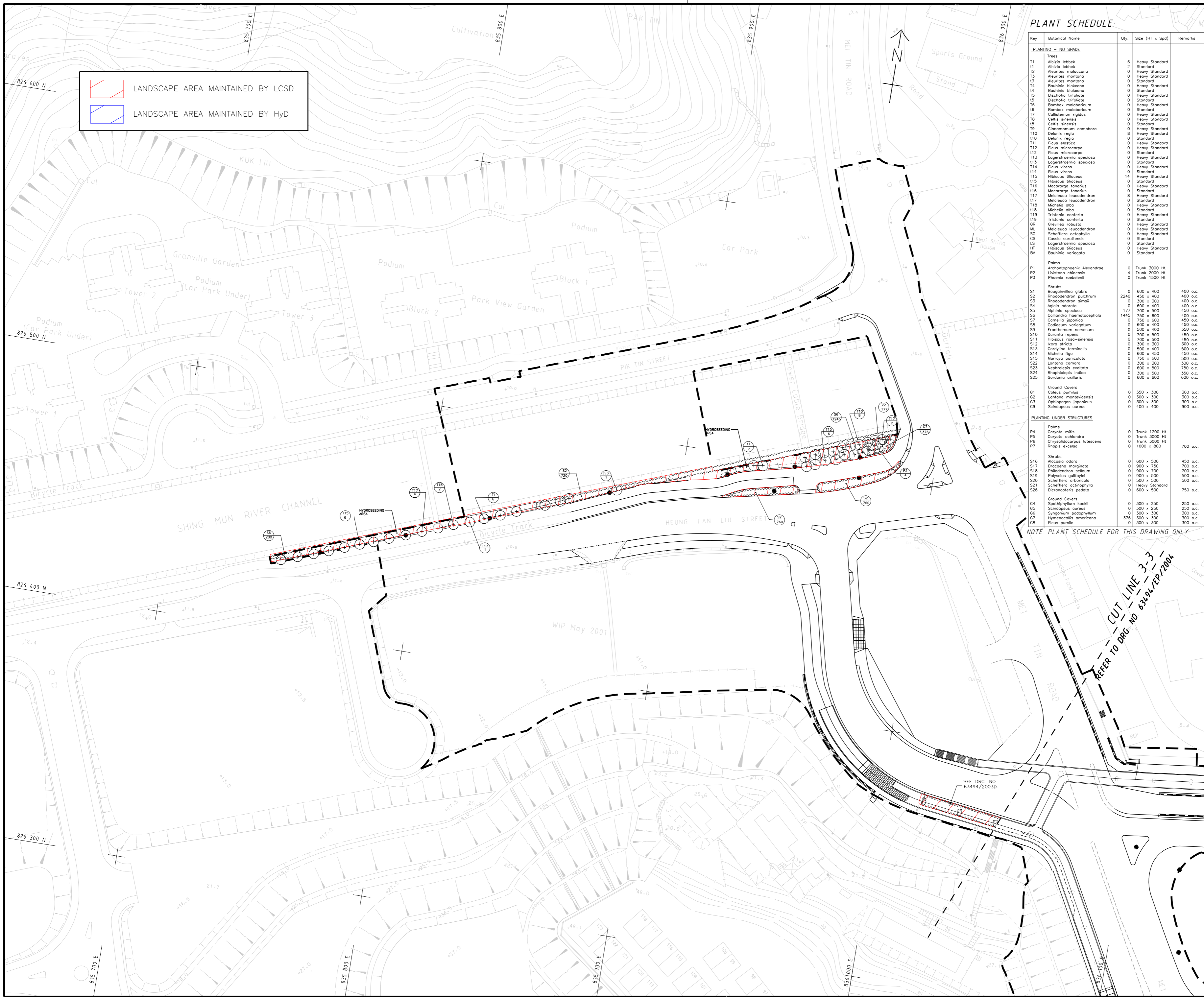
TEAM 73 HK
 LANDSCAPE ARCHITECTS & ENVIRONMENTAL PLANNERS
 地創 地創環境顧問事務所

AECOM

DRG. NO. 63494/EP/2002
 圖紙編號

DESIGNED BY TEF	CONTRACT NO. S179/02	P. BY APPROVED AKWL
DRAWN BY TEF	STATUS AS-BUILT DRAWING	COPYRIGHT RESERVED 版權所有

SCALE 1:500 (A0)
 DIMENSIONS ARE IN METRES



 LANDSCAPE AREA MAINTAINED BY LCSD
 LANDSCAPE AREA MAINTAINED BY HyD

PLANT SCHEDULE

Key	Botanical Name	Qty.	Size (HT x Spd)	Remarks
PLANTING - NO SHADE				
Trees				
T1	Albizia lebbek	6	Heavy Standard	
T2	Albizia lebbek	2	Standard	
T3	Aleurites moluccana	0	Heavy Standard	
T4	Aleurites montana	0	Heavy Standard	
T5	Bauhinia blakeana	0	Heavy Standard	
T6	Bauhinia blakeana	0	Standard	
T7	Bischofia trifoliata	0	Heavy Standard	
T8	Bischofia trifoliata	0	Standard	
T9	Bombax malabaricum	0	Heavy Standard	
T10	Bombax malabaricum	0	Standard	
T11	Callistemon rigidus	0	Heavy Standard	
T12	Celtis sinensis	0	Heavy Standard	
T13	Celtis sinensis	0	Standard	
T14	Cinnamomum camphora	0	Heavy Standard	
T15	Delonix regia	8	Heavy Standard	
T16	Delonix regia	0	Standard	
T17	Ficus elastica	0	Heavy Standard	
T18	Ficus microcarpa	0	Heavy Standard	
T19	Ficus microcarpa	0	Standard	
T20	Lagerstroemia speciosa	0	Heavy Standard	
T21	Lagerstroemia speciosa	0	Standard	
T22	Ficus virens	0	Heavy Standard	
T23	Ficus virens	0	Standard	
T24	Hibiscus lilaceus	14	Heavy Standard	
T25	Hibiscus lilaceus	0	Standard	
T26	Macaranga tonariis	0	Heavy Standard	
T27	Macaranga tonariis	0	Standard	
T28	Melaleuca leucadendron	8	Heavy Standard	
T29	Melaleuca leucadendron	0	Standard	
T30	Michelia alba	0	Heavy Standard	
T31	Michelia alba	0	Standard	
T32	Tristania conferta	0	Heavy Standard	
T33	Tristania conferta	0	Standard	
T34	Melaleuca leucadendron	0	Heavy Standard	
T35	Melaleuca leucadendron	0	Standard	
T36	Schefflera actinophylla	0	Heavy Standard	
T37	Schefflera actinophylla	0	Standard	
T38	Lagerstroemia speciosa	0	Heavy Standard	
T39	Lagerstroemia speciosa	0	Standard	
T40	Bauhinia variegata	0	Standard	
Palms				
P1	Archontophoenix Alexandrae	0	Trunk 3000 Ht	
P2	Livistona chinensis	4	Trunk 2000 Ht	
P3	Phoenix rebecciana	0	Trunk 1500 Ht	
Shrubs				
S1	Bougainvillea glabra	0	600 x 400	400 o.c.
S2	Rhododendron pulchrum	2240	450 x 400	400 o.c.
S3	Rhododendron simsii	0	300 x 300	400 o.c.
S4	Aglaia odorata	0	600 x 400	400 o.c.
S5	Alphitonia speciosa	177	700 x 500	450 o.c.
S6	Calliandra haematocephala	1445	750 x 600	400 o.c.
S7	Cornelia japonica	0	600 x 600	450 o.c.
S8	Calliandra haematocephala	0	600 x 400	450 o.c.
S9	Eranthemum nervosum	0	500 x 400	350 o.c.
S10	Duranta repens	0	700 x 500	450 o.c.
S11	Hibiscus rosa-sinensis	0	700 x 500	450 o.c.
S12	Ixora stricta	0	300 x 300	300 o.c.
S13	Cordia terminalis	0	500 x 400	300 o.c.
S14	Michelia figo	0	600 x 450	450 o.c.
S15	Murraya paniculata	0	750 x 600	500 o.c.
S16	Lantana camara	0	300 x 300	300 o.c.
S17	Nephrolepis exaltata	0	600 x 500	750 o.c.
S18	Rhaphiophis indicus	0	300 x 500	350 o.c.
S19	Gordonia axillaris	0	600 x 600	600 o.c.
Ground Covers				
G1	Calceolium pumilus	0	350 x 300	300 o.c.
G2	Lantana montevidensis	0	300 x 300	300 o.c.
G3	Ophiopogon japonicus	0	300 x 300	300 o.c.
G4	Scindapsus aureus	0	400 x 400	900 o.c.
PLANTING UNDER STRUCTURES				
Palms				
P4	Corytha mitis	0	Trunk 1200 Ht	
P5	Caryota ochlandra	0	Trunk 3000 Ht	
P6	Chrysalidocarpus lutescens	0	Trunk 3000 Ht	
P7	Rhapis excelsa	0	1000 x 800	700 o.c.
Shrubs				
S16	Alseodora odora	0	600 x 500	450 o.c.
S17	Drosera marginata	0	900 x 750	700 o.c.
S18	Philadelphus sellowii	0	900 x 700	700 o.c.
S19	Polycarpus guineensis	0	900 x 500	500 o.c.
S20	Schefflera arboricola	0	500 x 500	500 o.c.
S21	Schefflera actinophylla	0	Heavy Standard	
S22	Dicranopteris pedata	0	600 x 500	750 o.c.
Ground Covers				
G4	Spathiphyllum kockii	0	300 x 250	250 o.c.
G5	Scindapsus aureus	0	300 x 250	250 o.c.
G6	Syngonium podophyllum	0	300 x 300	300 o.c.
G7	Hymenocallis americana	376	300 x 300	300 o.c.
G8	Ficus pumila	0	300 x 300	300 o.c.

NOTE
1. FOR GENERAL NOTES AND LEGEND, REFER TO DRG. NO. 63494/EP/2001.

NOTE: PLANT SCHEDULE FOR THIS DRAWING ONLY

CUT LINE 3-3
 REFER TO DRG. NO. 63494/EP/2004

REV.	DESCRIPTION	DATE

Civil Engineering and Development Department
 土木工程發展署
 NT EAST DEVELOPMENT OFFICE
 新界東拓展處

SHA TIN NEW TOWN, STAGE II
 ROAD T3 AND ASSOCIATED ROADWORKS
PLANTING PLAN
 SHEET 3 OF 7

TEAM 73 HK
 LANDSCAPE ARCHITECTS &
 ENVIRONMENTAL PLANNERS
 地地環境顧問事務所

AECOM

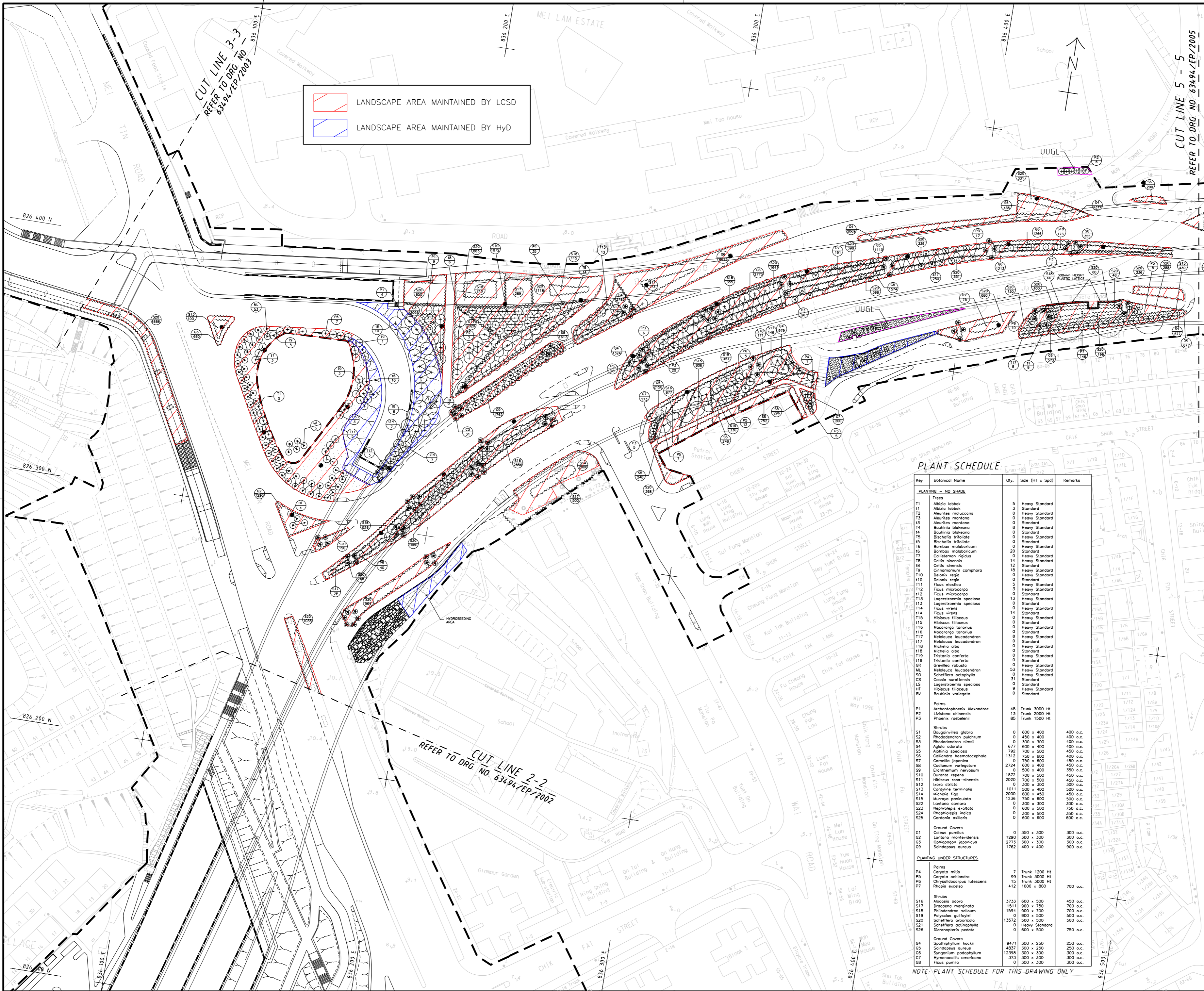
DRG. NO. 63494/EP/2003
 圖紙編號

DESIGNED BY T73 CONTRACT NO. S179/02 P. OR APPROVED AKWL
 設計 審核

DRAWN BY TEF STATUS AS-BUILT DRAWING
 繪圖 階段

SCALE 1:500 (A0) DIMENSIONS ARE IN METRES
 比例尺 尺寸單位

© COPYRIGHT RESERVED
 版權所有



LANDSCAPE AREA MAINTAINED BY LCSD
 LANDSCAPE AREA MAINTAINED BY HyD

PLANT SCHEDULE

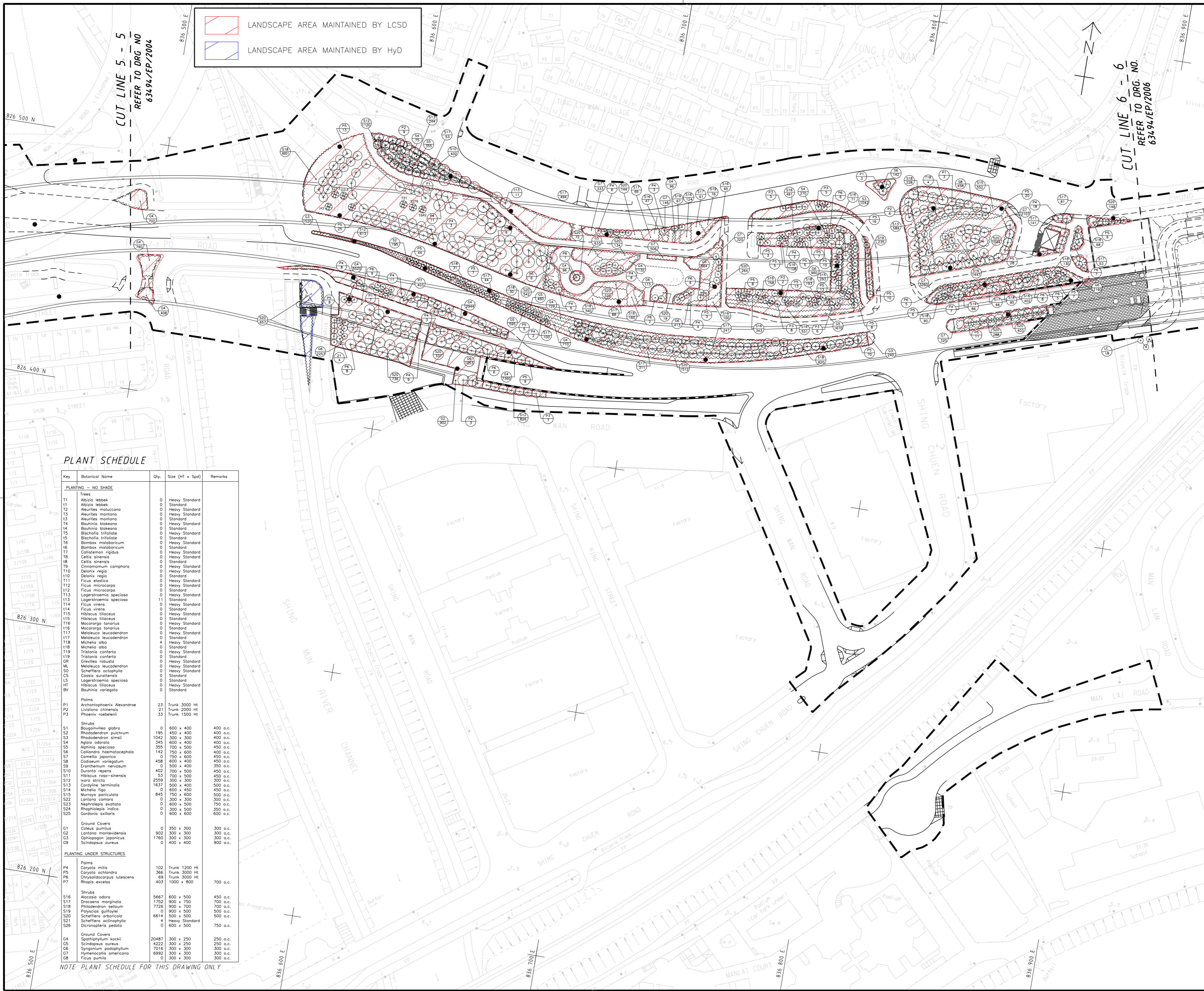
Key	Botanical Name	Qty.	Size (Ht x Spd)	Remarks
PLANTING - NO SHADE				
Trees				
T1	Albizia lebbek	5	Heavy Standard	
T2	Aleurites montana	0	Standard	
T3	Aleurites montana	0	Standard	
T4	Bauhinia blakeana	8	Heavy Standard	
T5	Bischofia trifoliata	0	Standard	
T6	Bombax malabaricum	0	Heavy Standard	
T7	Callistemon rigidus	14	Heavy Standard	
T8	Celtis sinensis	12	Standard	
T9	Cinnamomum camphora	18	Heavy Standard	
T10	Dalmanella regia	0	Standard	
T11	Ficus elastica	5	Heavy Standard	
T12	Ficus microcarpa	3	Heavy Standard	
T13	Loganostroma speciosa	0	Standard	
T14	Ficus virens	13	Heavy Standard	
T15	Hibiscus tiliaceus	0	Standard	
T16	Macaranga tanarius	0	Heavy Standard	
T17	Melaleuca leucodendron	8	Heavy Standard	
T18	Melaleuca leucodendron	0	Standard	
T19	Michelia alba	0	Heavy Standard	
T20	Tristania conferta	0	Standard	
T21	Tristania conferta	0	Standard	
T22	Grevillea robusta	0	Heavy Standard	
T23	Melaleuca leucodendron	83	Heavy Standard	
T24	Schefflera octophylla	0	Heavy Standard	
T25	Casuarina equisetifolia	31	Standard	
T26	Hibiscus tiliaceus	9	Heavy Standard	
T27	Bauhinia variegata	0	Standard	
Palm				
P1	Archontophoenix alexandrae	48	Trunk 3000 HT	
P2	Livistona chinensis	13	Trunk 2000 HT	
P3	Phoenix roebelinii	80	Trunk 1500 HT	
Shrubs				
S1	Bougainvillea glabra	0	600 x 400	400 o.c.
S2	Rhododendron pulchrum	0	450 x 400	400 o.c.
S3	Rhododendron simsii	0	300 x 300	400 o.c.
S4	Agave odorata	677	600 x 400	400 o.c.
S5	Albina speciosa	792	700 x 500	450 o.c.
S6	Calliandra haemodocarpa	1121	750 x 600	400 o.c.
S7	Comelia japonica	0	750 x 600	450 o.c.
S8	Codiaeum variegatum	2724	600 x 400	450 o.c.
S9	Erantemum nervosum	0	500 x 400	350 o.c.
S10	Duranta repens	1872	700 x 500	450 o.c.
S11	Hibiscus rosa-sinensis	2020	700 x 500	450 o.c.
S12	Ipomea striata	0	300 x 300	300 o.c.
S13	Gonolobus terminalis	500	500 x 400	500 o.c.
S14	Michelia figo	2000	600 x 450	450 o.c.
S15	Murraya paniculata	1336	750 x 600	500 o.c.
S16	Lantana camara	0	300 x 300	300 o.c.
S17	Nephrolepis exaltata	0	600 x 500	750 o.c.
S18	Raphanistrum indicum	0	300 x 300	300 o.c.
S19	Gordonia axillaris	0	600 x 600	600 o.c.
Ground Covers				
G1	Coleus pumilus	0	350 x 300	300 o.c.
G2	Lantana montevidensis	1398	300 x 300	300 o.c.
G3	Chrysanthemum indicum	2775	300 x 300	300 o.c.
G4	Scindapsus aureus	1762	400 x 400	900 o.c.
PLANTING UNDER STRUCTURES				
Palm				
P4	Coryola mitis	7	Trunk 1200 HT	
P5	Coryola ochlandra	99	Trunk 3000 HT	
P6	Chrysalidocarpus lutescens	15	Trunk 3000 HT	
P7	Rhapiz excelsa	412	1000 x 800	700 o.c.
Shrubs				
S16	Alcaesia odora	3733	600 x 500	450 o.c.
S17	Dracaena marginata	1511	600 x 750	700 o.c.
S18	Philodendron selloum	1594	900 x 700	700 o.c.
S19	Polystichum guilfordii	500	500 x 500	500 o.c.
S20	Schefflera arborescens	13572	500 x 500	500 o.c.
S21	Schefflera octophylla	0	Heavy Standard	
S22	Dicranopteris acrostichoides	0	600 x 500	750 o.c.
Ground Covers				
G4	Spathiphyllum kochii	8471	300 x 250	250 o.c.
G5	Scindapsus aureus	4837	300 x 250	250 o.c.
G6	Synonymum podophyllum	12398	300 x 300	300 o.c.
G7	Hymenocallis americana	373	300 x 300	300 o.c.
G8	Ficus pumila	0	300 x 300	300 o.c.

NOTE:
1. FOR GENERAL NOTES AND LEGEND, REFER TO DRG. NO. 63494/EP/2001.

REV. | DESCRIPTION | DATE
 Civil Engineering and Development Department
 土木工程拓展署
 NT EAST DEVELOPMENT OFFICE
 新界東拓展處
SHA TIN NEW TOWN, STAGE II
 ROAD T3 AND ASSOCIATED ROADWORKS
PLANTING PLAN
 SHEET 4 OF 7
TEAM 73 HK
 LANDSCAPE ARCHITECTS & ENVIRONMENTAL PLANNERS
 地利環境顧問事務所
AECOM
 DRG. NO. 63494/EP/2004
 DESIGNED BY T73 | CONTRACT NO. ST79/02 | P. DR. APPROVED AKWL
 DRAWN BY TEF | STATUS AS-BUILT DRAWING
 SCALE 1:500 (A0)
 DIMENSIONS ARE IN METRES | COPYRIGHT RESERVED

LANDSCAPE AREA MAINTAINED BY LCSD
 LANDSCAPE AREA MAINTAINED BY HyD

NOTE
 1. FOR GENERAL NOTES AND LEGEND, REFER TO DRG. NO. 63494/EP/2001.



PLANT SCHEDULE

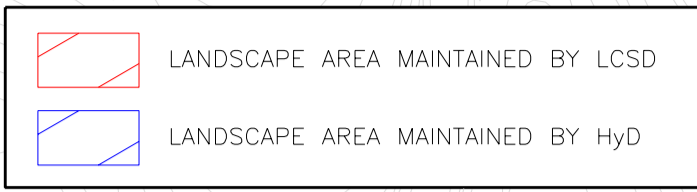
Key	Botanical Name	Qty.	Size (Ht x Spd)	Remarks
PLANTING - NO SHADE				
Trees				
T1	Albizia lebbek	0	Heavy Standard	
T2	Aleurites moluccana	0	Heavy Standard	
T3	Aleurites montana	0	Heavy Standard	
T4	Bauhinia blakeana	0	Heavy Standard	
T5	Bischofia trifoliata	0	Heavy Standard	
T6	Bombax malabaricum	0	Standard	
T7	Callistemon rigidus	0	Heavy Standard	
T8	Celtis sinensis	0	Standard	
T9	Concomitum comphora	0	Heavy Standard	
T10	Delonix regia	0	Standard	
T11	Ficus elastica	0	Heavy Standard	
T12	Ficus microcarpa	0	Standard	
T13	Loganostroma speciosa	0	Standard	
T14	Ficus virens	0	Heavy Standard	
T15	Hibiscus tiliaceus	0	Standard	
T16	Macaranga tonariensis	0	Standard	
T17	Melaleuca leucadendron	0	Heavy Standard	
T18	Michelia alba	4	Heavy Standard	
T19	Tristania conferta	0	Standard	
T20	Cravilla robusta	0	Heavy Standard	
T21	Melaleuca leucadendron	0	Heavy Standard	
T22	Schefflera octophylla	0	Standard	
T23	Cassia surattensis	0	Standard	
T24	Loganostroma speciosa	0	Standard	
T25	Hibiscus tiliaceus	0	Heavy Standard	
T26	Bauhinia variegata	0	Standard	
Palms				
P1	Archontophoenix alexandriae	23	Trunk 3000 HT	
P2	Livistona chinensis	21	Trunk 2000 HT	
P3	Phoenix roebelenii	33	Trunk 1500 HT	
Shrubs				
S1	Bougainvillea glabra	0	600 x 400	400 a.c.
S2	Rhododendron pulchrum	195	450 x 400	400 a.c.
S3	Rhododendron simsii	1042	300 x 300	400 a.c.
S4	Agave odora	345	600 x 400	400 a.c.
S5	Alphitonia speciosa	355	700 x 500	450 a.c.
S6	Calliandra haematocephala	142	750 x 600	400 a.c.
S7	Camellia japonica	0	750 x 600	450 a.c.
S8	Codiaeum variegatum	458	600 x 400	450 a.c.
S9	Dracopis retusus	0	550 x 400	350 a.c.
S10	Duranta repens	402	700 x 500	450 a.c.
S11	Hibiscus rosa-sinensis	53	700 x 500	450 a.c.
S12	Isara stricta	2359	500 x 300	300 a.c.
S13	Cordia terminalis	1637	500 x 400	500 a.c.
S14	Michelia figo	600	450 x 400	450 a.c.
S15	Murraya paniculata	845	750 x 600	500 a.c.
S16	Lantana camara	0	300 x 300	300 a.c.
S17	Nephrolepis exaltata	0	300 x 500	750 a.c.
S18	Rhaphiolepis indica	0	300 x 500	350 a.c.
S19	Gordonia axillaris	0	600 x 600	600 a.c.
Ground Covers				
G1	Coleus pumilus	0	350 x 300	300 a.c.
G2	Lantana montevidensis	902	300 x 300	300 a.c.
G3	Ophiopogon japonicus	1760	300 x 300	300 a.c.
G4	Scindapsus aureus	0	400 x 400	900 a.c.
PLANTING UNDER STRUCTURES				
Palms				
P4	Corytha mitis	102	Trunk 1200 HT	
P5	Corytha ochlandra	366	Trunk 3000 HT	
P6	Chrysalidocarpus lutescens	69	Trunk 3000 HT	
P7	Rhapis excelsa	403	1000 x 900	700 a.c.
Shrubs				
S16	Alcornoque odora	5667	600 x 500	450 a.c.
S17	Dracaena marginata	1752	900 x 750	700 a.c.
S18	Philodendron selloum	7726	900 x 700	700 a.c.
S19	Polyscias guilfoylei	0	900 x 500	500 a.c.
S20	Schefflera arboricola	6614	500 x 500	500 a.c.
S21	Schefflera octophylla	4	Heavy Standard	
S22	Dicranopteris pedata	0	600 x 500	750 a.c.
Ground Covers				
G4	Spathiphyllum kochii	20487	300 x 250	250 a.c.
G5	Scindapsus aureus	4222	300 x 250	250 a.c.
G6	Synonymium podophyllum	7016	300 x 300	300 a.c.
G7	Hymenocallis americana	6992	300 x 300	300 a.c.
G8	Ficus pumila	0	300 x 300	300 a.c.

NOTE: PLANT SCHEDULE FOR THIS DRAWING ONLY

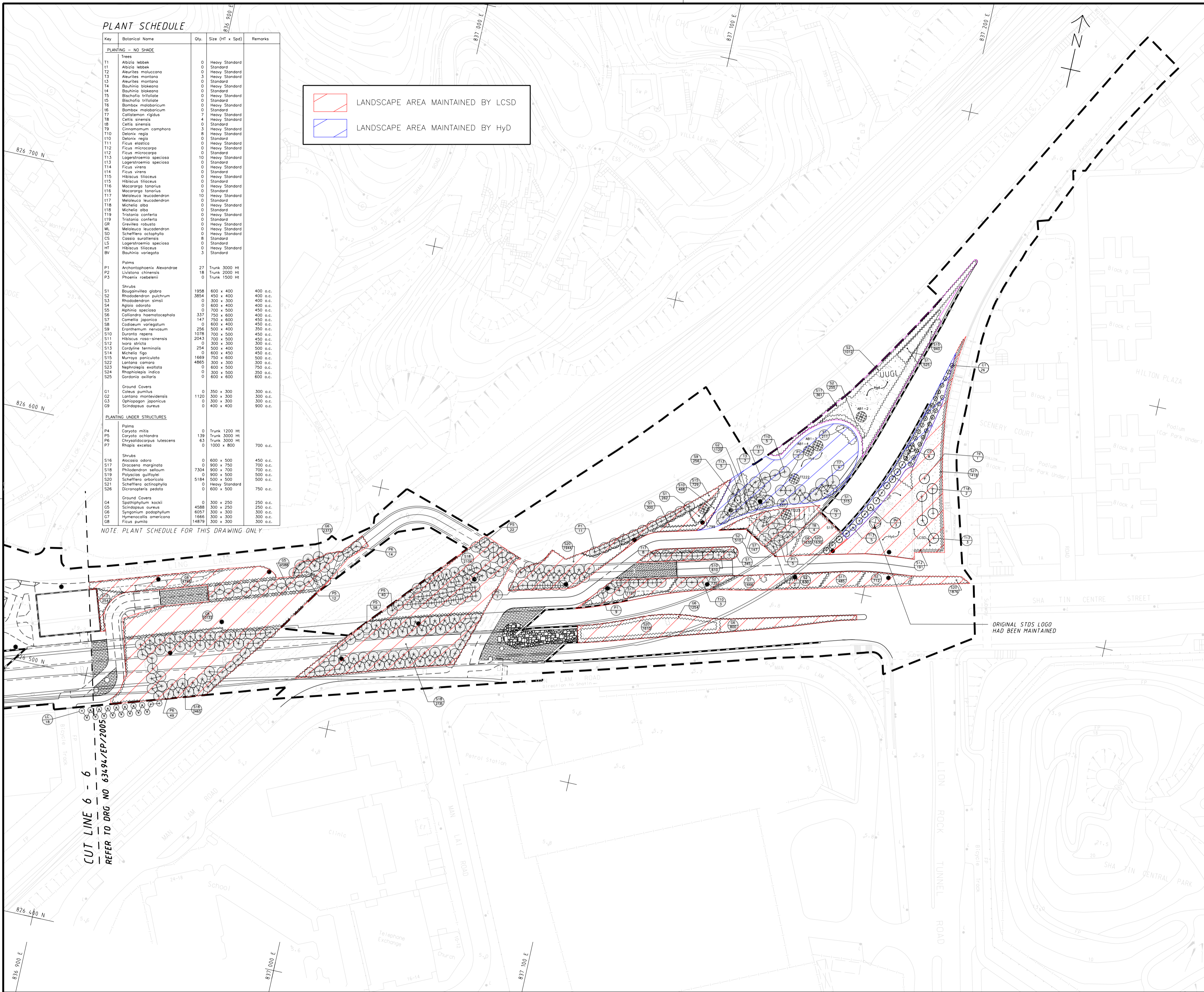
REV.	DESCRIPTION	DATE
Civil Engineering and Development Department NT EAST DEVELOPMENT OFFICE 新界東拓展處		
SHA TIN NEW TOWN, STAGE II		
ROAD T3 AND ASSOCIATED ROADWORKS		
PLANTING PLAN		
SHEET 5 OF 7		
TEAM 73 HK LANDSCAPE ARCHITECTS & ENVIRONMENTAL PLANNERS 地創 地創環境顧問事務所		
AECOM		
DRG. NO.	63494/EP/2005	
DESIGNED BY	CONTRACT NO.	P. OR APPROVED
T73	S179/02	AKWL
DRAWN BY	STATUS	
TEF		
SCALE	AS-BUILT DRAWING	
1:500 (A0)		
DIMENSIONS ARE IN METRES	COPYRIGHT RESERVED	

PLANT SCHEDULE

Key	Botanical Name	Qty.	Size (Ht x Spd)	Remarks
PLANTING - NO SHADE				
T1	Albizia lebbek	0	Heavy Standard	
T2	Albizia lebbek	0	Standard	
T3	Aleurites montana	3	Heavy Standard	
T4	Aleurites montana	0	Standard	
T5	Bauhinia bloemana	0	Heavy Standard	
T6	Bauhinia bloemana	0	Standard	
T7	Bischofia trifoliata	0	Standard	
T8	Bombax malabaricum	0	Heavy Standard	
T9	Bombax malabaricum	0	Standard	
T10	Callistemon rigidus	7	Heavy Standard	
T11	Celtis sinensis	4	Heavy Standard	
T12	Celtis sinensis	0	Standard	
T13	Ginnemum camphora	3	Heavy Standard	
T14	Delonix regia	0	Standard	
T15	Ficus elastica	0	Heavy Standard	
T16	Ficus microcarpa	0	Heavy Standard	
T17	Ficus microcarpa	0	Standard	
T18	Lagerstroemia speciosa	10	Heavy Standard	
T19	Lagerstroemia speciosa	0	Standard	
T20	Ficus virens	0	Heavy Standard	
T21	Ficus virens	0	Standard	
T22	Hibiscus lilaceus	0	Heavy Standard	
T23	Hibiscus lilaceus	0	Standard	
T24	Macaranga tonkinensis	0	Heavy Standard	
T25	Macaranga tonkinensis	0	Standard	
T26	Melaleuca leucodendron	10	Heavy Standard	
T27	Melaleuca leucodendron	0	Standard	
T28	Michelia alba	0	Heavy Standard	
T29	Michelia alba	0	Standard	
T30	Tristania conferta	0	Heavy Standard	
T31	Tristania conferta	0	Standard	
T32	Grevillea robusta	0	Heavy Standard	
T33	Melaleuca leucodendron	0	Heavy Standard	
T34	Schefflera octophylla	0	Heavy Standard	
T35	Cassia aurantensis	0	Standard	
T36	Lagerstroemia speciosa	0	Standard	
T37	Hibiscus lilaceus	0	Heavy Standard	
T38	Bauhinia variegata	0	Standard	
Palms				
P1	Archontophoenix Alexandrae	27	Trunk 3000 HT	
P2	Livistona chinensis	18	Trunk 2000 HT	
P3	Phoenix roebelenii	0	Trunk 1500 HT	
Shrubs				
S1	Bougainvillea glabra	1958	600 x 400	400 o.c.
S2	Rhododendron pulchrum	3854	450 x 400	400 o.c.
S3	Rhododendron simsii	0	300 x 300	400 o.c.
S4	Aglaia odorata	0	600 x 400	400 o.c.
S5	Alphitonia speciosa	0	700 x 500	450 o.c.
S6	Calliandra haematocephala	337	750 x 600	400 o.c.
S7	Camelia japonica	147	750 x 600	450 o.c.
S8	Codiaeum variegatum	0	600 x 400	450 o.c.
S9	Eranthemum nervosum	256	500 x 400	350 o.c.
S10	Garutia repens	1078	700 x 500	450 o.c.
S11	Hibiscus rosa-sinensis	2043	700 x 500	450 o.c.
S12	Ixora stricta	0	300 x 300	300 o.c.
S13	Gordalinea terminalis	254	500 x 400	400 o.c.
S14	Michelia figo	0	600 x 450	450 o.c.
S15	Murraya paniculata	1669	750 x 600	300 o.c.
S16	Lantana camara	4865	300 x 300	300 o.c.
S17	Nephrolepis exaltata	0	600 x 500	750 o.c.
S18	Phoradendron indicum	0	300 x 300	300 o.c.
S19	Gordonia axillaris	0	600 x 600	600 o.c.
Ground Covers				
G1	Coleus pumilus	0	350 x 300	300 o.c.
G2	Lantana montevidensis	1120	300 x 300	300 o.c.
G3	Dioscorea japonica	0	300 x 300	300 o.c.
G4	Scindapsus aureus	0	400 x 400	900 o.c.
PLANTING UNDER STRUCTURES				
Palms				
P4	Caryota mitis	0	Trunk 1200 HT	
P5	Caryota ochlandra	139	Trunk 3000 HT	
P6	Chrysalidocarpus lutescens	63	Trunk 3000 HT	
P7	Rhapis excelsa	0	1000 x 800	700 o.c.
Shrubs				
S16	Alcornoque odorata	0	600 x 500	450 o.c.
S17	Arceuthobium marginata	0	900 x 750	700 o.c.
S18	Philodendron selloum	7304	900 x 700	700 o.c.
S19	Polystichum guilfordii	0	900 x 500	500 o.c.
S20	Schefflera orbiculata	5184	500 x 500	500 o.c.
S21	Schefflera octophylla	0	Heavy Standard	
S22	Dicranopteris pedata	0	600 x 500	750 o.c.
Ground Covers				
G4	Sparganium angustifolium	0	300 x 250	250 o.c.
G5	Scindapsus aureus	4568	300 x 250	250 o.c.
G6	Syngonium podophyllum	6057	300 x 300	300 o.c.
G7	Hymenocallis americana	1666	300 x 300	300 o.c.
G8	Ficus pumila	14879	300 x 300	300 o.c.



NOTE:
1. FOR GENERAL NOTES AND LEGEND, REFER TO DRG. NO. 63494/EP/2001.





NOTE: PLANT SCHEDULE FOR THIS DRAWING ONLY

ORIGINAL STDS LOGO HAD BEEN MAINTAINED

CUT LINE 6 - 6
REFER TO DRG. NO. 63494/EP/2005

REV.	DESCRIPTION	S.I.C.	P.I.C.	DATE
01	Initial Issue			
Civil Engineering and Development Department 土木工務發展署 NT EAST DEVELOPMENT OFFICE 新界東拓展處				
SHA TIN NEW TOWN, STAGE II				
ROAD T3 AND ASSOCIATED ROADWORKS				
PLANTING PLAN				
SHEET 6 OF 7				
地 TEAM 73 HK 利 LANDSCAPE ARCHITECTS & ENVIRONMENTAL PLANNERS 地利環境顧問事務所				
AECOM				
DRG. NO. 圖紙編號		63494/EP/2006		
DESIGNED BY 設計	CONTRACT NO. 合約編號	P. DR. APPROVED 批准人		
T73	ST79/02	AKWL		
DRAWN BY 繪圖	STATUS 階段			
TEF	AS-BUILT DRAWING			
SCALE 比例 1 : 500 (A0)				
DIMENSIONS ARE IN 尺寸單位 METRES				
© COPYRIGHT RESERVED 版權 所 有				

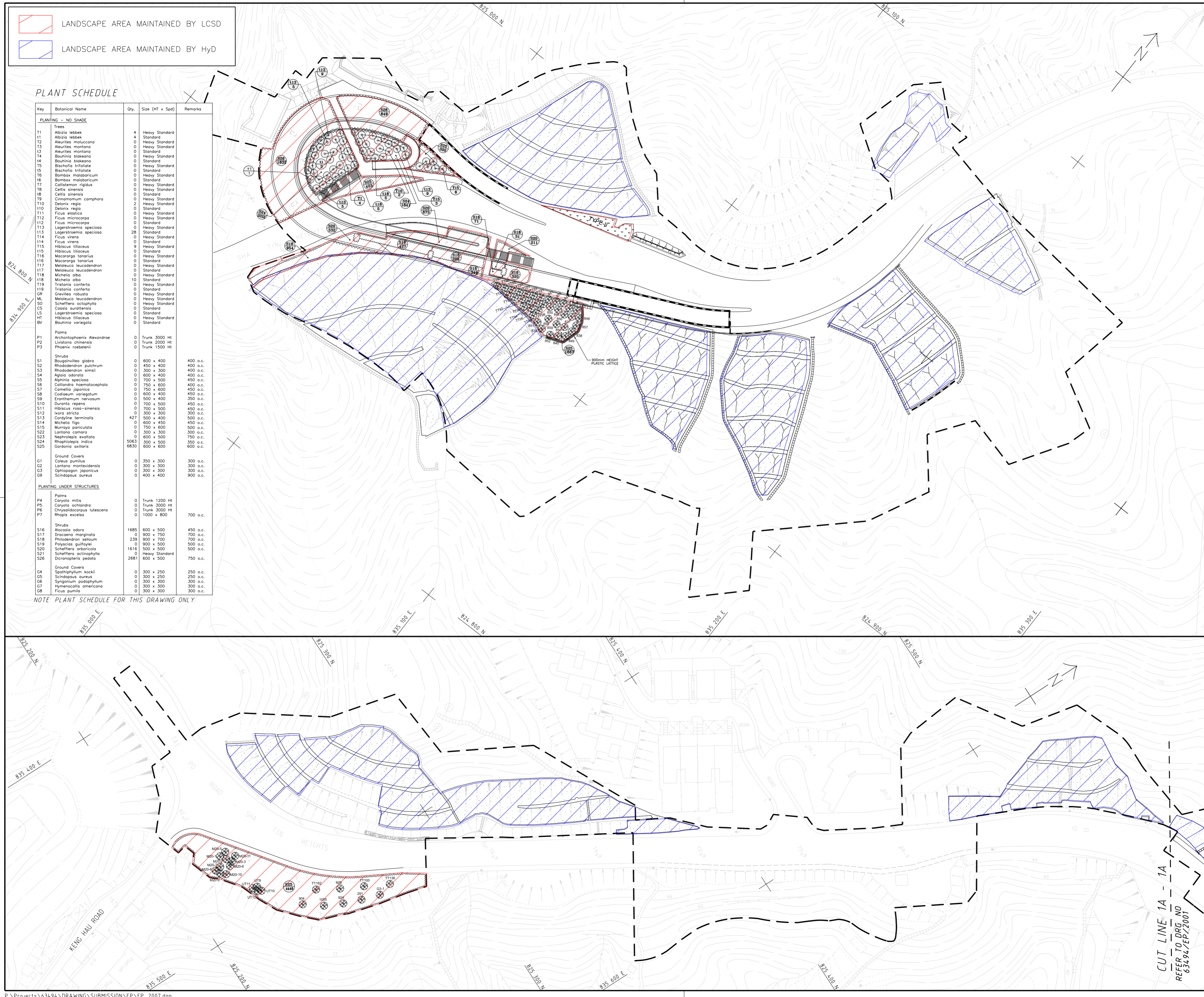
-  LANDSCAPE AREA MAINTAINED BY LCSD
-  LANDSCAPE AREA MAINTAINED BY HyD

PLANT SCHEDULE

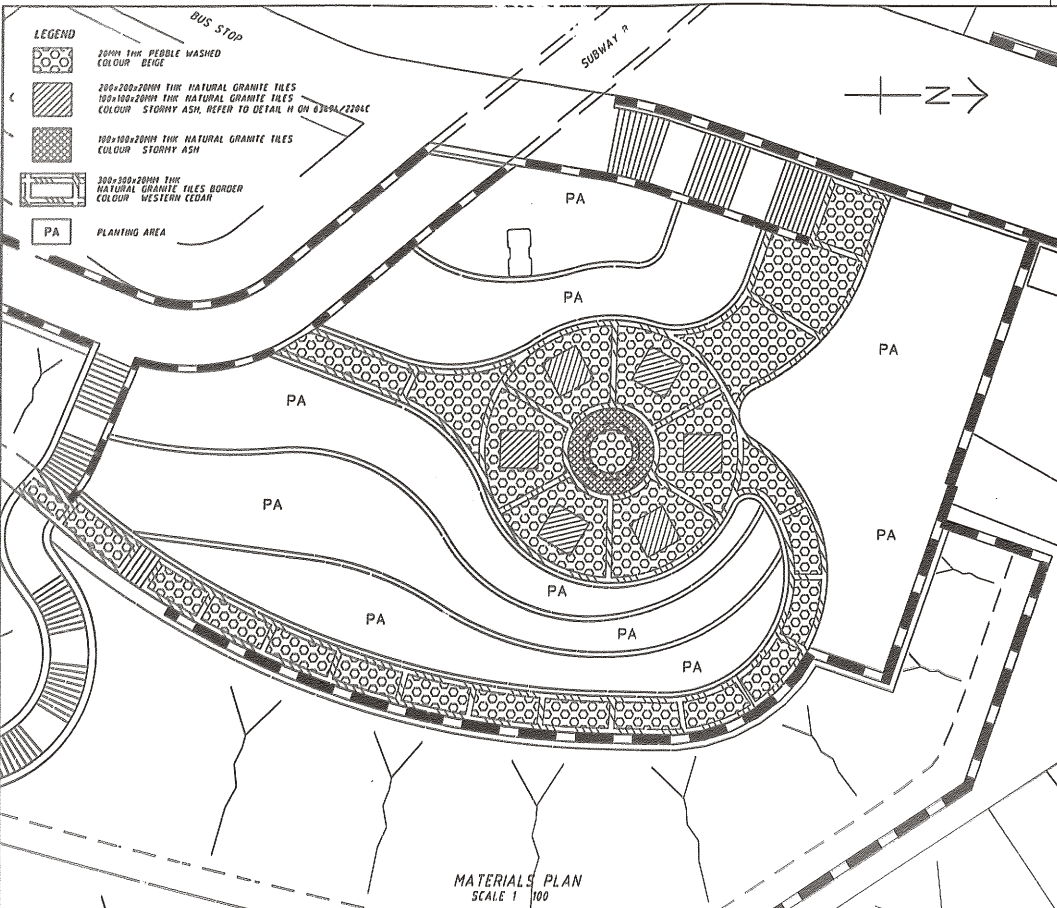
Key	Botanical Name	Qty.	Size (HT x Spd)	Remarks
PLANTING - NO SHADE				
Trees				
T1	Albizia lebbek	4	Heavy Standard	
T2	Albizia lebbek	1	Standard	
T3	Aleurites moluccana	0	Heavy Standard	
T4	Aleurites montana	0	Heavy Standard	
T5	Bauhinia bakaiana	0	Standard	
T6	Bombax malabaricum	0	Heavy Standard	
T7	Bombax malabaricum	0	Standard	
T8	Callistemon rigidus	0	Heavy Standard	
T9	Callistemon rigidus	0	Standard	
T10	Cinnamomum camphora	0	Heavy Standard	
T11	Delonix regia	2	Heavy Standard	
T12	Ficus elastica	0	Heavy Standard	
T13	Ficus microcarpa	0	Heavy Standard	
T14	Ficus microcarpa	0	Standard	
T15	Lagerstroemia speciosa	0	Heavy Standard	
T16	Lagerstroemia speciosa	28	Standard	
T17	Ficus virens	0	Heavy Standard	
T18	Ficus virens	0	Standard	
T19	Hibiscus tiliaceus	9	Heavy Standard	
T20	Hibiscus tiliaceus	0	Standard	
T21	Macaranga tonariis	0	Heavy Standard	
T22	Macaranga tonariis	0	Standard	
T23	Melaleuca leucodendron	0	Heavy Standard	
T24	Melaleuca leucodendron	0	Standard	
T25	Michelia alba	10	Standard	
T26	Michelia alba	0	Heavy Standard	
T27	Tristania conferta	0	Standard	
T28	Tristania conferta	0	Heavy Standard	
T29	Grevillea robusta	0	Heavy Standard	
T30	Melaleuca leucodendron	0	Heavy Standard	
T31	Schefflera octophylla	0	Heavy Standard	
T32	Cassia auriculata	0	Standard	
T33	Lagerstroemia speciosa	0	Standard	
T34	Hibiscus tiliaceus	0	Heavy Standard	
T35	Bauhinia variegata	0	Standard	
Palm				
P1	Archontophoenix Alexandrae	0	Trunk 3000 Ht	
P2	Livistona chinensis	0	Trunk 2000 Ht	
P3	Phoenix roebelenii	0	Trunk 1500 Ht	
Shrubs				
S1	Bougainvillea glabra	0	600 x 400	400 o.c.
S2	Rhododendron pulchrum	0	450 x 400	400 o.c.
S3	Rhododendron simsi	0	300 x 300	400 o.c.
S4	Aglaia odorata	0	600 x 400	400 o.c.
S5	Alphitonia speciosa	0	700 x 500	450 o.c.
S6	Calliandra haematocephala	0	750 x 600	400 o.c.
S7	Cornelia japonica	0	750 x 600	450 o.c.
S8	Cassipouera variegatum	0	600 x 400	450 o.c.
S9	Eranthemum nersosum	0	500 x 400	350 o.c.
S10	Duranta repens	0	700 x 500	450 o.c.
S11	Hibiscus rosa-sinensis	0	700 x 500	450 o.c.
S12	Ixora stricta	0	300 x 300	300 o.c.
S13	Cardyline terminalis	427	500 x 400	500 o.c.
S14	Michelia figo	0	600 x 450	450 o.c.
S15	Murraya paniculata	0	750 x 600	500 o.c.
S16	Lantana camara	0	300 x 300	300 o.c.
S17	Nephrolepis exaltata	0	600 x 500	750 o.c.
S18	Rhaphirolepis indica	5063	300 x 300	300 o.c.
S19	Gordonia calyculata	6830	600 x 600	600 o.c.
Ground Covers				
G1	Coleus pumilus	0	350 x 300	300 o.c.
G2	Lantana montevidensis	0	300 x 300	300 o.c.
G3	Oplismenus japonicus	0	300 x 300	300 o.c.
G4	Scindapsus aureus	0	400 x 400	900 o.c.
PLANTING UNDER STRUCTURES				
Palm				
P4	Corytha mitis	0	Trunk 1200 Ht	
P5	Corytha ochinandra	0	Trunk 3000 Ht	
P6	Chrysalidocarpus lutescens	0	Trunk 3000 Ht	
P7	Rhopis excelsa	0	1000 x 800	700 o.c.
Shrubs				
S16	Alcascia odora	1685	600 x 500	450 o.c.
S17	Dracaena marginata	0	900 x 750	700 o.c.
S18	Philodendron selloum	239	900 x 700	700 o.c.
S19	Polycastis guilfoylei	0	900 x 500	500 o.c.
S20	Schefflera arborescens	1616	500 x 500	500 o.c.
S21	Schefflera actinophylla	0	Heavy Standard	
S22	Dianostematis seelata	2881	600 x 500	750 o.c.
Ground Covers				
G4	Spathiphyllum kockii	0	300 x 250	250 o.c.
G5	Scindapsus aureus	0	300 x 250	250 o.c.
G6	Synagnum podophyllum	0	300 x 300	300 o.c.
G7	Hymenocallis americana	0	300 x 300	300 o.c.
G8	Ficus pumila	0	300 x 300	300 o.c.

NOTE PLANT SCHEDULE FOR THIS DRAWING ONLY

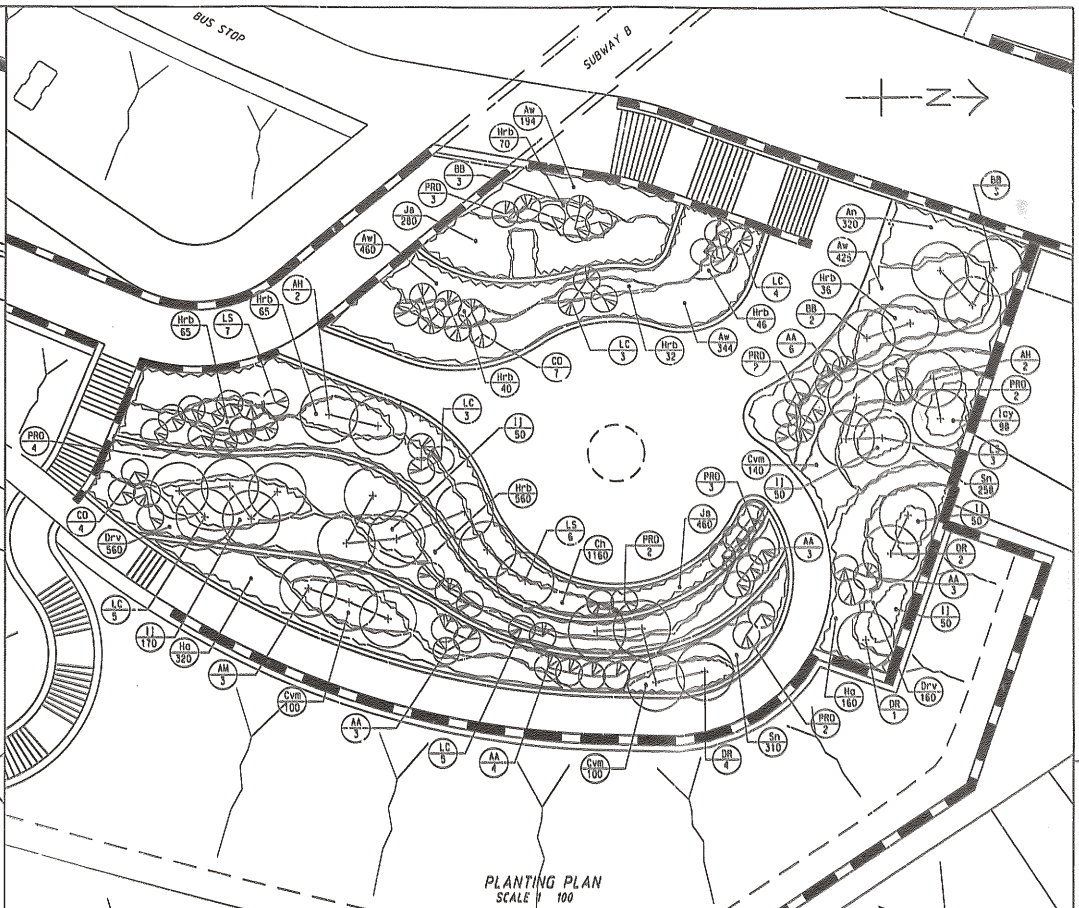
NOTE
1. FOR GENERAL NOTES AND LEGEND, REFER TO DRG. NO. 63494/EP/2001.



REV.	DESCRIPTION	BY	CHK.	DATE
Civil Engineering and Development Department 土木 工程 發展 署 NT EAST DEVELOPMENT OFFICE 新 界 東 區 工 務 處				
SHA TIN NEW TOWN, STAGE II				
ROAD T3 AND ASSOCIATED ROADWORKS				
PLANTING PLAN				
SHEET 7 OF 7				
				
AECOM				
DRG. NO. 圖紙編號	63494/EP/2007			
DESIGNED BY 設計	T73	CONTRACT NO. 合約編號	S179/02	P. D. APPROVED 批准人
DRAWN BY 繪圖	TEF	STATUS 階段	AKWL	
SCALE 比例	1 : 500 (A0)			
DIMENSIONS ARE IN 尺寸單位	METRES			
AS-BUILT DRAWING				
© COPYRIGHT RESERVED 版權 所 有				



MATERIALS PLAN
SCALE 1/100



PLANTING PLAN
SCALE 1/100

NOTES
1 FOR GENERAL NOTES, REFER TO DRG NO. 63494/2201C

Location	Description	Material Type	Size	Colour	Finish	Remarks
Tai Po Road 7 1/2 Mile-stone Rest Garden						
Pathway Area / Footpath	Main Paving Border	Pebble Washed Natural Granite Tiles	20mm Hk. 6-10mm ϕ 300 x 300 x 20mm Thk.	Beige Stony Ash / Western Cedar	Pebble washed / Concrete Flamed	
Stairs Planter Sitting Area	Main Paving Bench	Natural Granite Tiles Artificial Granite Tiles Fair Face Concrete	300 x 300 x 20mm Hk. 100 x 100 x 20mm Hk. 100 x 100 x 18mm Hk.	Stony Ash Beige ---	Flamed Honed Concrete	
Pavilion	Dome Post Beam Pavement	Galvanized Steel Tubular Hollow Steel Galvanized Steel Concrete	---- 100mm ϕ x 4 203 x 13mm 200mm ϕ 300mm ϕ	Green Green Copper ---	Curved Polycarbonate / Plexiglass ---- ---- Concrete	
Travertine	Corrupted Column Purfin Beam	Natural Concrete Timber Timber	300mm ϕ 55 x 140mm 65 x 180mm	Green Natural White Cedar Canadian White Cedar	Emulsion Paint Natural Finish Oil Stain Natural Finish Oil Stain	
Entrance Gate	Steel Gate Flat Bar Square Bar	Tubular Hollow Steel Flat Bar Square Bar	80 x 40 x 4mm 40 x 15mm 15 x 15mm	Beige Green Green	Paint Paint Paint	

MATERIALS SCHEDULE

Key	Botanical Name	Chinese Name	Qty	Size Ht x Spd	Remarks
INSEA					
AN	Arundo donax	竹	4	heavy Standard	
AN	Aleurites moluccana	桐油樹	3	heavy Standard	
BB	Quercus bialata	栲木	8	heavy Standard	
BB	Banksia laevis	銀杉木	7	heavy Standard	
LS	Loganthea speciosa	大葉野桐	16	heavy Standard	
CUM					
AA	Archontophoenix alexandrina	散尾葵	19	3.5m Ht	
CC	Corsetia chinensis	散尾葵	15	3m Ht	
LC	Livistona chinensis	散尾葵	20	3m Ht	
PRD	Phoenix rostrata	日本葵	18	2m Ht	
SHADES					
AN	Albizia julibrissin	洋紫荊	320	800 x 400	350 o.c.
AN	Acyrtosia wilsoniana	紅木	863	800 x 400	350 o.c.
AN	Acyrtosia wilsoniana "Java White"	紅木	460	800 x 400	350 o.c.
AN	Cordia alliodora	藍花楸	1160	400 x 500	450 o.c.
AN	Cordia alliodora "var. ligularis"	藍花楸	340	800 x 400	350 o.c.
AN	Corchorus rufus	藍花楸	720	800 x 400	350 o.c.
AN	Hydnocarpus sinensis	藍花楸	480	700 x 400	400 o.c.
AN	Hibiscus rosa-sinensis cv. "Birds"	錦州大紅花	914	800 x 400	400 o.c.
AN	Ipomoea pes-caprae "Gilliesii Yellow"	黃花大牽牛	18	600 x 400	350 o.c.
AN	Ipomoea pes-caprae	黃花大牽牛	170	600 x 400	350 o.c.
AN	Jasminum sambac	黃梅	740	600 x 400	350 o.c.
AN	Santania nobilifolia	金銀花	960	600 x 400	350 o.c.

PLANTING SCHEDULE

SHA TIN NEW TOWN, STAGE II
ROAD 13 AND ASSOCIATED ROADWORKS
TAI PO ROAD
7 1/2 MILE-STONE REST GARDEN
PLANTING AND MATERIAL PLAN

TEAM 73 HK
LANDSCAPE ARCHITECTS &
ENVIRONMENTAL PLANNERS
城市環境規劃師事務所

AECOM

DRG. NO. 63494/2202B

DESIGNED BY TEAM 73 HK
CHECKED BY S1192/02
DATE 05
SCALE AS SHOWN

AS-BUILT DRAWING
COPYRIGHT RESERVED