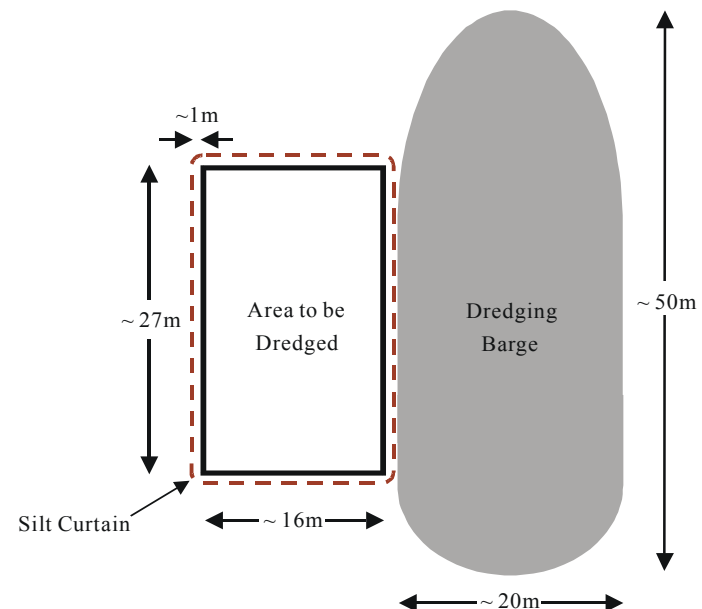
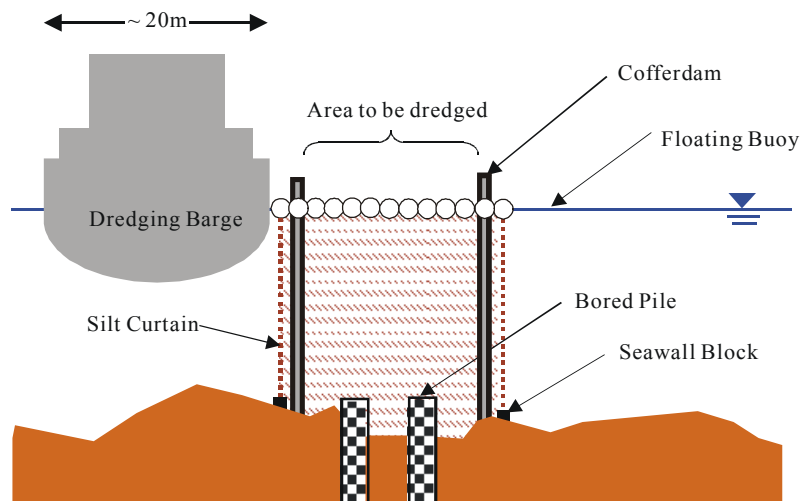


(a) Silt Curtain Arrangement for Typical Span Pier Site



(b) Silt Curtain Arrangement for Main Span Pier Site



(c) Crosssection of Silt Curtain Arrangement



環境保護署  
Environmental Protection Department

深港西部通道及后海灣幹線其中一段  
Shenzhen Western Corridor and Part of Deep Bay Link  
環境許可證編號 EP-162/2003  
Environmental Permit Number EP-162/2003

隔泥幕的布置  
Arrangement of Silt Curtain

圖六  
Figure 6