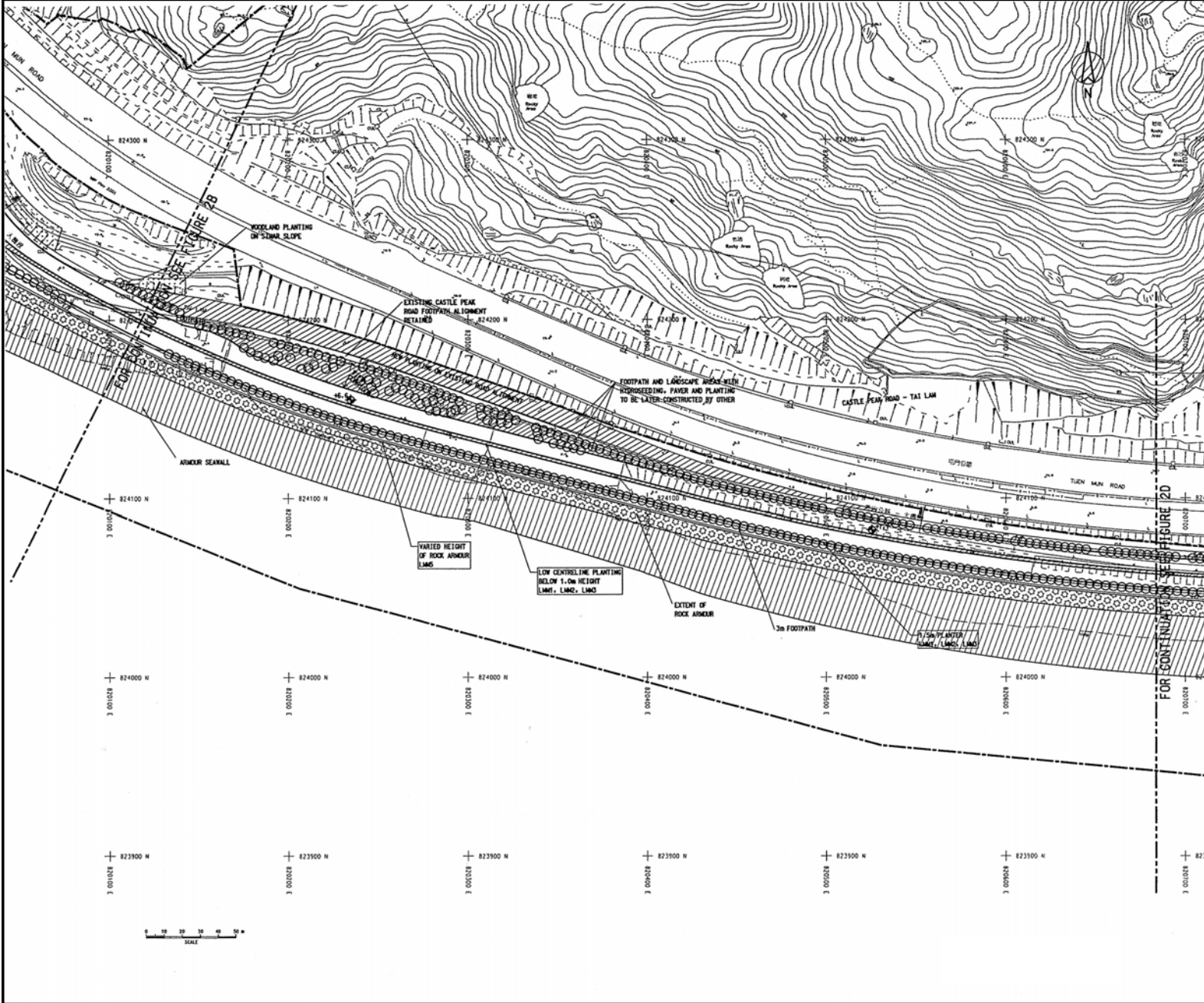


# Improvement to Castle Peak Road Between Ka Loon Tsuen and Siu Lam –

## Landscape Proposal Plan



**NOTES :**

1. DIMENSIONS SHOWN ARE INDICATIVE ONLY.
2. ALL DIMENSIONS ARE IN MILLIMETER, UNLESS OTHERWISE STATED.
3. L.M.M1, L.M.M2, L.M.M3, L.M.M4, L.M.M5, L.M.MT ARE LANDSCAPE MITIGATION MEASURES AS STATED IN SECTION 9 OF THE FINAL ENVIRONMENTAL IMPACT ASSESSMENT (EIA) REPORT.
4. THE CONTRACTOR SHALL STRICTLY FOLLOW THE GUIDELINES AND PRINCIPLES SET OUT IN THE EIA REPORT FOR THE PROPOSED LANDSCAPE PROPOSAL.

**LEGEND :**

- SITE BOUNDARY
- CASTLE PEAK ROAD PROPOSED
- ▨ TREES RETAINED
- (with number) TREE NUMBER
- (with dot) EXISTING TREE TO BE RETAINED
- (with circle) PROPOSED TREES
- ▨ (diagonal lines) PROPOSED AMENITY PLANTING
- ▨ (dotted) PROPOSED WOODLAND PLANTING
- HWM (HIGH WATER MARK)
- + 0.00 PROPOSED LEVELS

Environmental Permit No.:  
**FEP-01/171/2004**

Figure 2c

