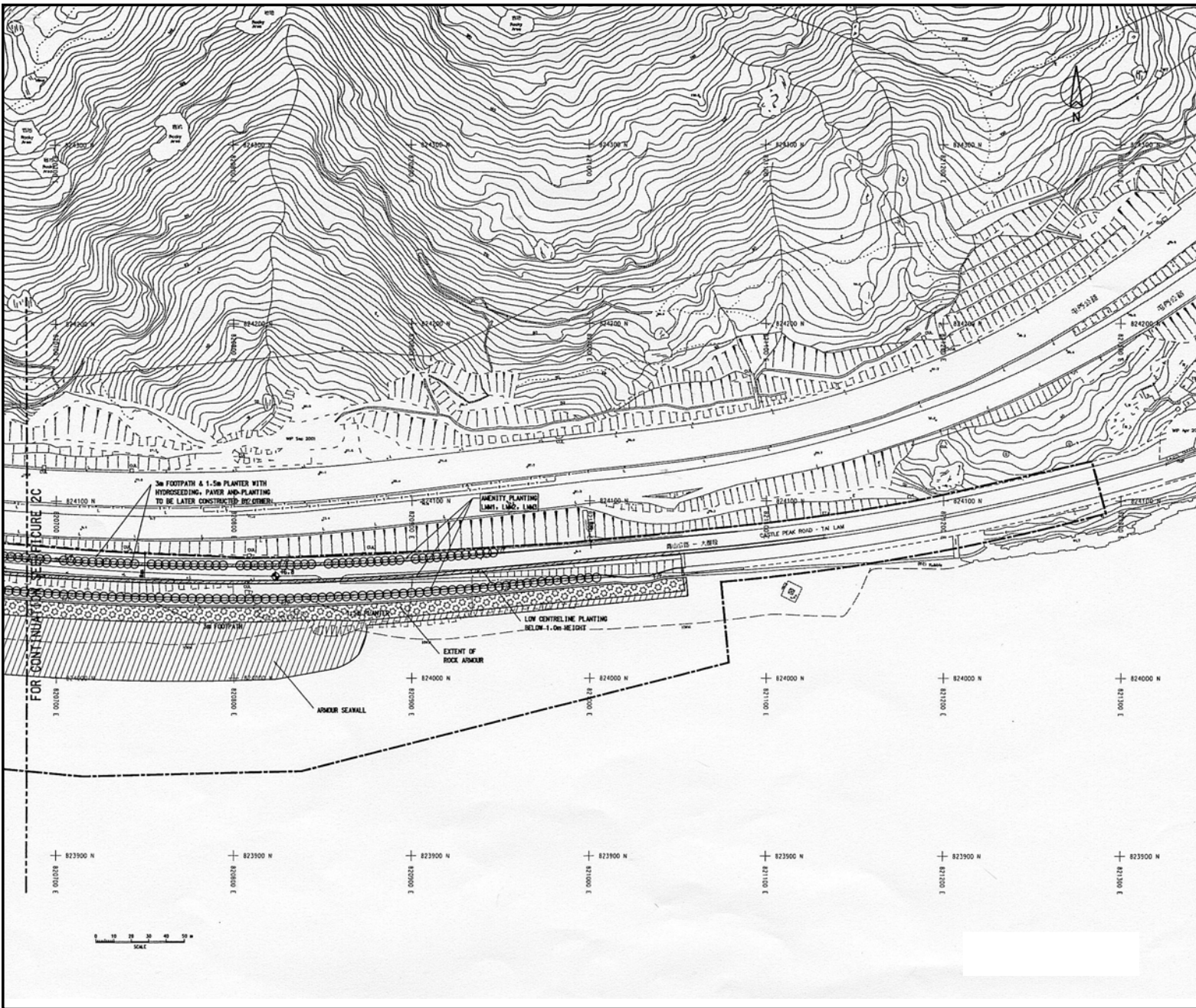


Improvement to Castle Peak Road Between Ka Loon Tsuen and Siu Lam – Landscape Proposal Plan



- NOTES :**
1. DIMENSIONS SHOWN ARE INDICATIVE ONLY.
 2. ALL DIMENSIONS ARE IN MILLIMETER, UNLESS OTHERWISE STATED.
 3. LMM1, LMM2, LMM3, LMM4, LMM5, LMMT ARE LANDSCAPE MITIGATION MEASURES AS STATED IN SECTION 9 OF THE FINAL ENVIRONMENTAL IMPACT ASSESSMENT (EIA) REPORT.
 4. THE CONTRACTOR SHALL STRICTLY FOLLOW THE GUIDELINES AND PRINCIPLES SET OUT IN THE EIA REPORT FOR THE PROPOSED LANDSCAPE PROPOSAL.

- LEGEND :**
- SITE BOUNDARY
 - CASTLE PEAK ROAD PROPOSED
 - ▨ TREES RETAINED
 - (with number) TREE NUMBER
 - (with number) EXISTING TREE TO BE RETAINED
 - PROPOSED TREES
 - ▨ (diagonal lines) PROPOSED AMENITY PLANTING
 - ▨ (dotted pattern) PROPOSED WOODLAND PLANTING
 - HWM (HIGH WATER MARK)
 - + 0.00 PROPOSED LEVELS

Environmental Permit No.:
FEP-01/171/2004

Figure 2d

