



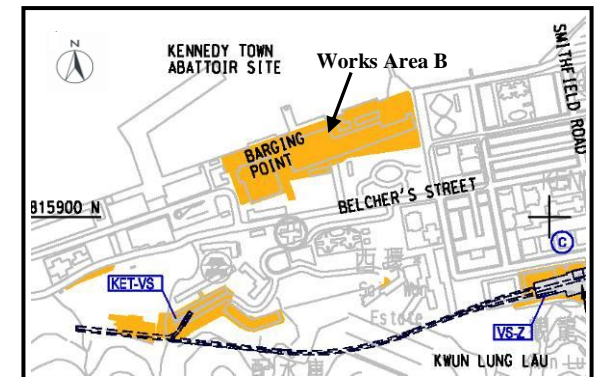
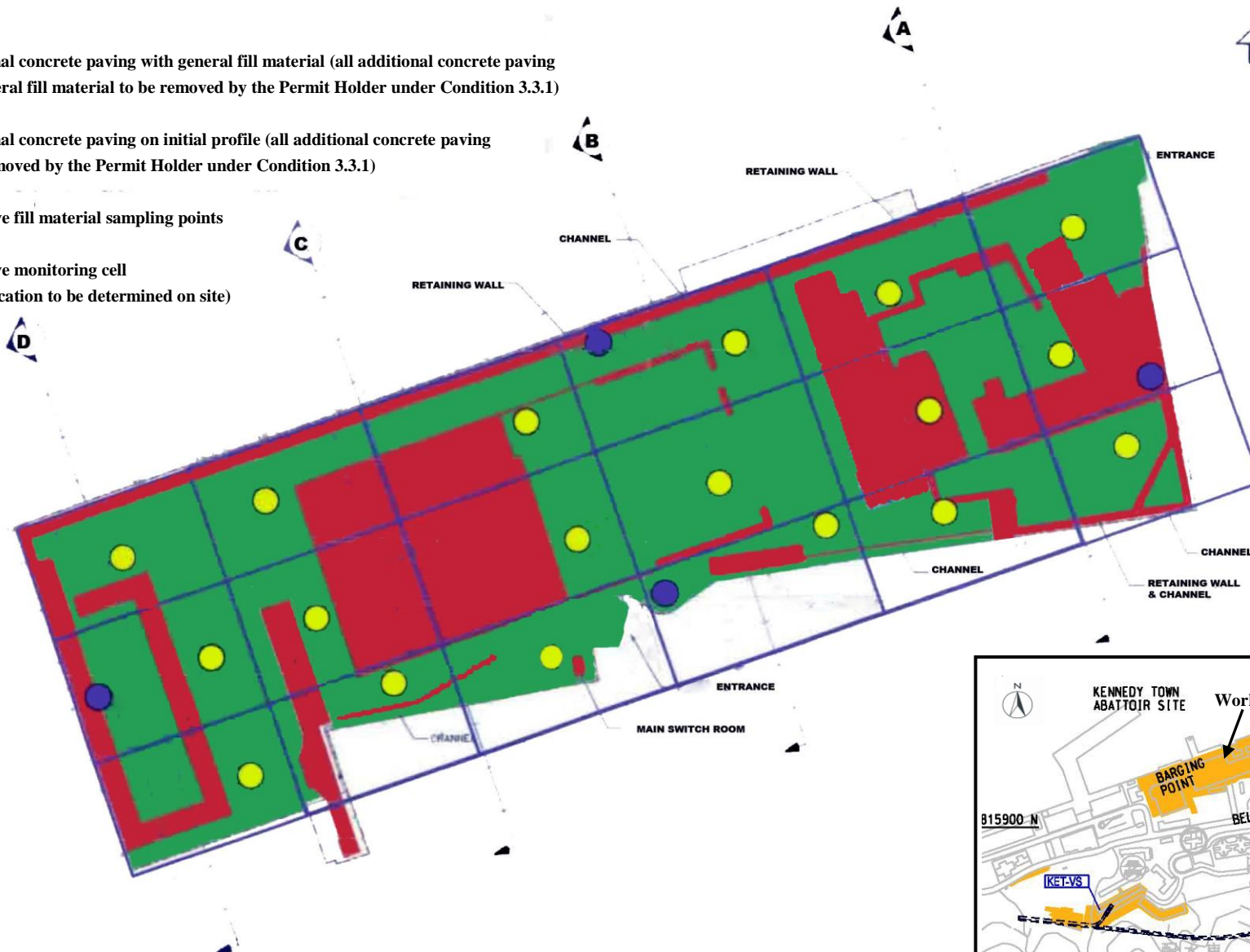


**Legend:**

-  Additional concrete paving with general fill material (all additional concrete paving and general fill material to be removed by the Permit Holder under Condition 3.3.1)
-  Additional concrete paving on initial profile (all additional concrete paving to be removed by the Permit Holder under Condition 3.3.1)
-  Indicative fill material sampling points
-  Indicative monitoring cell (exact location to be determined on site)



**Project Title: West Island Line**  
 工程項目名稱：西港島綫

Environmental Permit No. : EP-313/2008/E  
 環境許可證編號 : EP-313/2008/E

**Figure 16: Mitigation Design at Works Area B**  
 圖 16: 乙施工區的緩解設計

(This figure was prepared based Drawing No.714/F/300/SUR/CBO/002A of the VEP application No.VEP-333/2010)  
 (本圖是根據申請更改環境許可證申請編號 VEP-333/2010 圖 714/F/300/SUR/CBO/002A 編制)