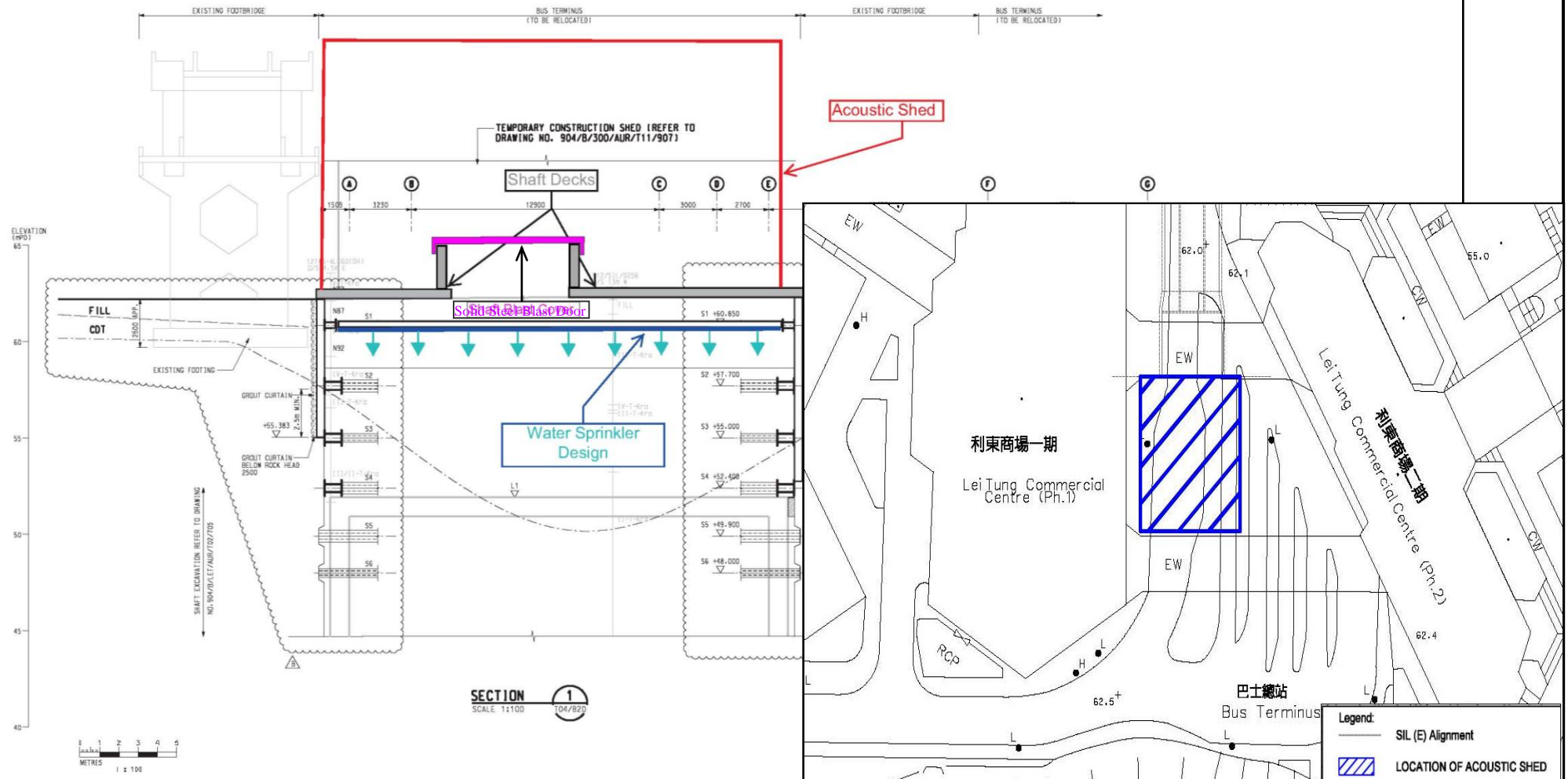


Detailed Layout and Specification for the Blast Door and Acoustic Shed
 爆破門及隔音棚的詳細設計及規格

- NOTES :**
1. REFER TO DRAWING NO. 904/E/300/A/R/T01/420 TO SET OUT FOR SETTING OUT PIPE PELES WITH RESPECT TO SHAFT STRUCTURE.
 2. REFER TO DRAWING NO. 904/E/300/A/R/T01/490 TO BMS FOR TYPICAL CONSTRUCTION SEQUENCE.

- LEGEND :**
- NASS CONCRETE FILL
 - BACKFILL



Project Title: South Island Line (East)
 工程項目名稱：南港島綫(東段)

Environmental Permit No. : EP-407/2010/D
 環境許可證編號 : EP-407/2010/D

Figure 17: Location Plan of Blast Door and Acoustic Shed
 圖 17: 爆破門及隔音棚位置圖

(This figure was prepared based on Drawing No. Appendix E of Environmental Review Report for Lei Tung Station – Excavation for LET Entrance B Shaft by Drill and Blast Method)
 (本圖是根據利東站環境檢討報告 - 以鑽鑿及爆破形式挖掘利東站入口 B 圖附件 E 編制)