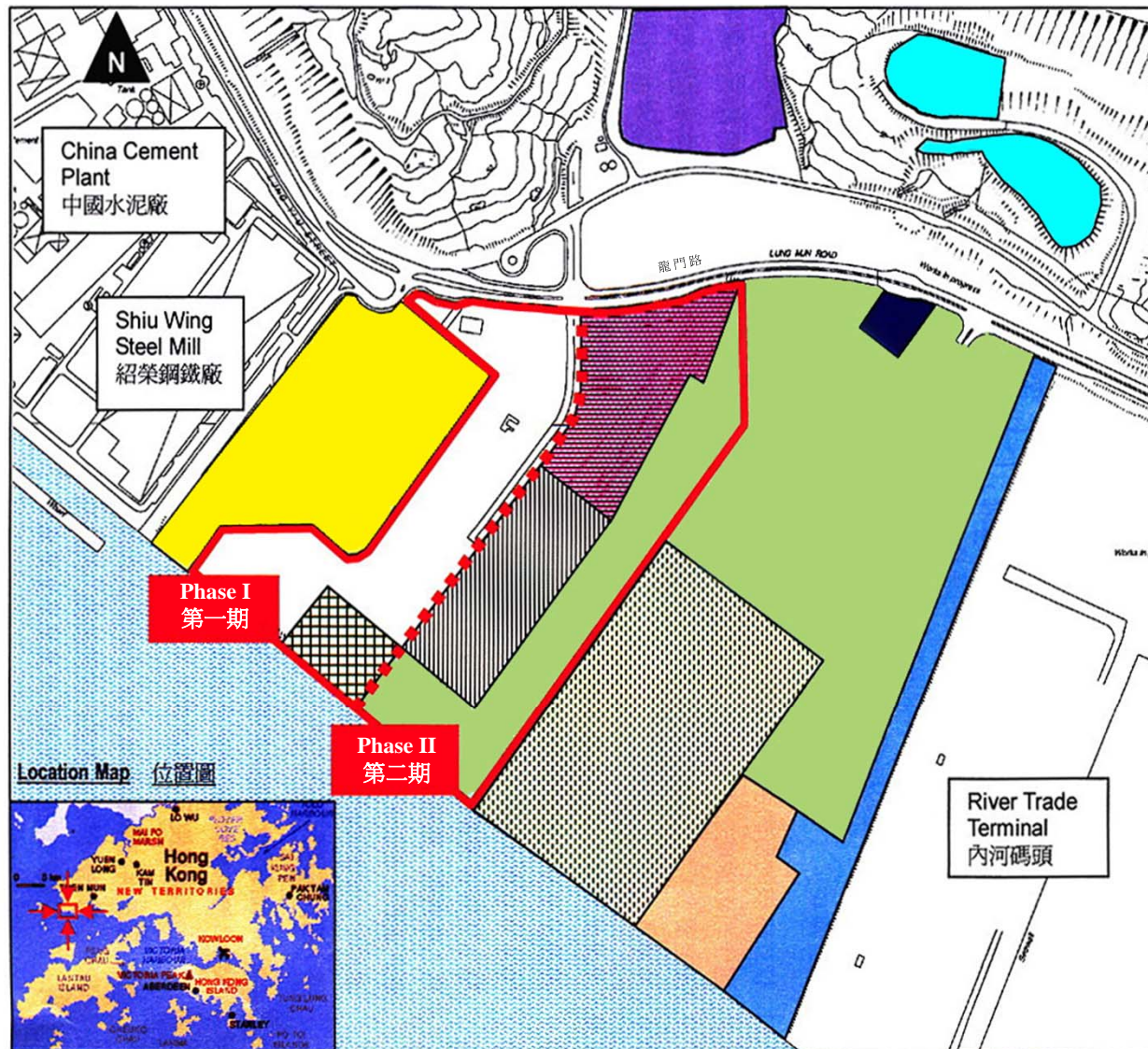


Key 圖例

-  **EcoPark 環保園**
-  **Siu Lang Shui Closed Restored Landfill (Existing)**
小冷水已關閉修復堆填區 (現有)
-  **Holiday Camp (Planned)**
度假營地 (計劃中)
-  **Permanent Aviation Fuel Facility (Planned)**
永久性飛機燃料設施 (計劃中)
-  **Tuen Mun Sewage Pumping Station (Existing)**
屯門污水泵水站 (現有)
-  **Pilot Construction & Demolition (C&D) Materials Recycling Facility (Existing)**
建造及拆卸物料回收設施 (現有)
-  **Crushing Facility (Planned)**
壓碎設施 (計劃中)
-  **Fill Bank (Existing)**
填料庫 (現有)
-  **3.2ha Fill Bank Expansion (Existing)**
3.2公頃填料庫擴建 (現有)
-  **Tipping Hall for East Sha Chau (Existing)**
沙洲東部海泥傾倒區 (現有)
-  **Penny's Bay Stage 2 Sorting Facility & Barging (Existing)**
竹篙灣第二期分類設施及駁船裝卸區 (現有)
-  **Temporary Mixed Construction Waste Sorting Facility (Planned)**
臨時混合建築廢物分類設施 (計劃中)
-  **C&D Materials Handling Facilities (indicative boundary) (Planned)**
建造及拆卸物料處理設施 (參考範圍) (計劃中)



Development of an EcoPark in Tuen Mun Area 38 - Location of the EcoPark and Other Users

於屯門38區發展環保園 – 位於屯門38區的環保園及其他使用者位置圖

Note: Reproduced from Figure 2.1 of the Approved EIA Report (AEIAR-086/2005)

注意：複製自經批准的環評報告(AEIAR-086/2005)圖2.1

Environmental Permit No.: EP-226/2005/F
環境許可證編號:

Figure 1 圖 1

