






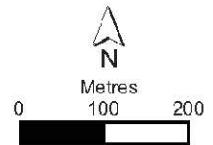
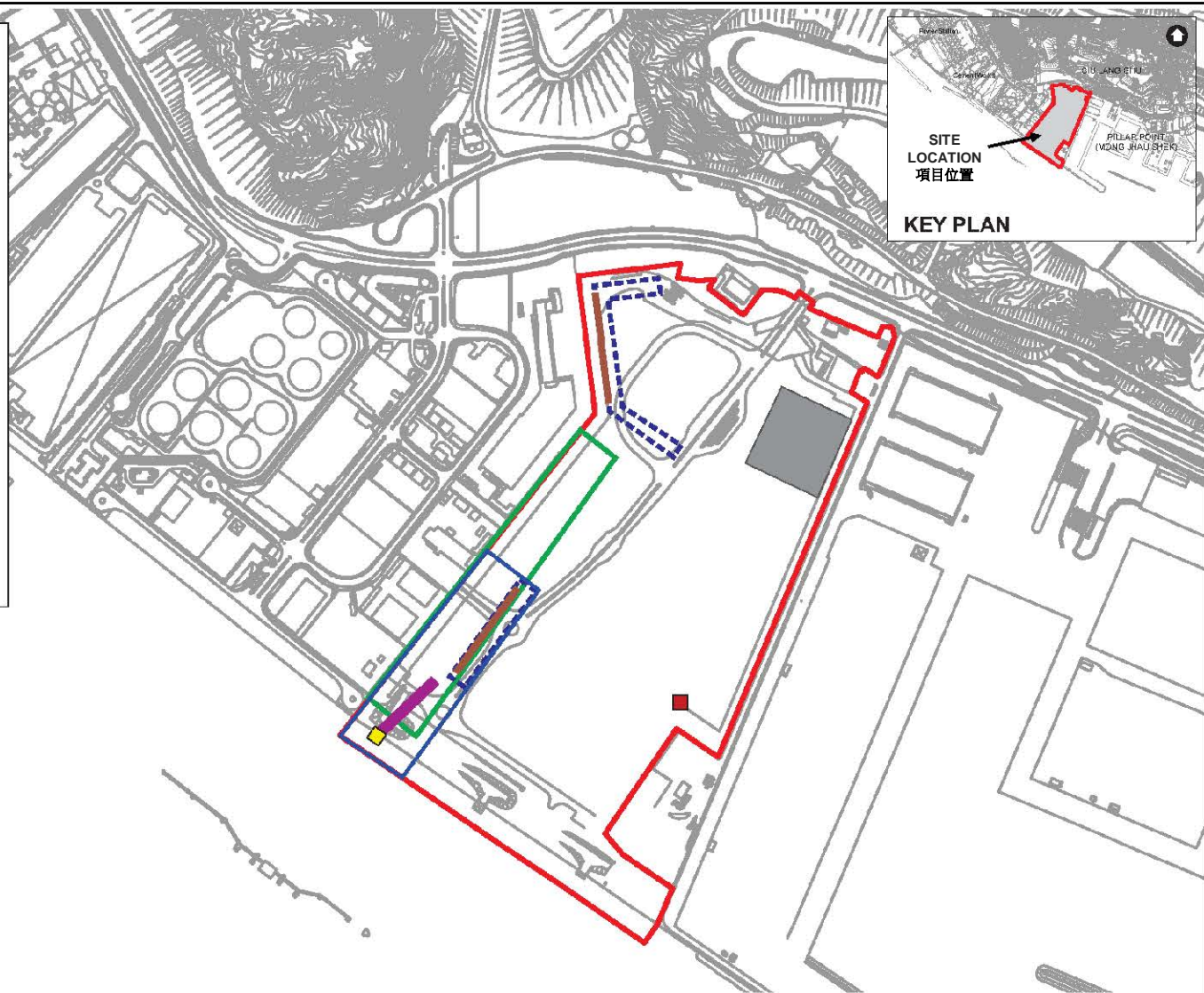


Key 圖例

-  Barging Point B3
趸船位置B3
-  5m Vertical Barrier
5米高的垂直屏障
-  Enclosed Conveyor Belt System
封閉式輸送帶系統
-  Main Haul Road With Surface Wet At All Time
主要運輸道路路面保持濕潤
-  Stockpile Area: Covered by No Less Than
50mm Thick Gravel (Except: Haul Road)
不少於50毫米厚的礫石層覆蓋的區域(運輸道路除外)
-  Truckload Control Zone
車輛流量控制區
-  TMFB Boundary
屯門第38區填料庫範圍
-  Construction and Demolition Material
Sorting Facility
拆建物料篩選分類設施
-  Site Crusher
工地壓碎機



Expansion and Extension of Fill Bank at Tuen Mun Area 38 – Dust Control Mitigation Measures

屯門第38區填料庫擴展及延長運作期 – 減少塵埃控制措施

Environmental Permit No.: **EP-210/2005/D**
環境許可證編號:

Figure 2 圖 2

