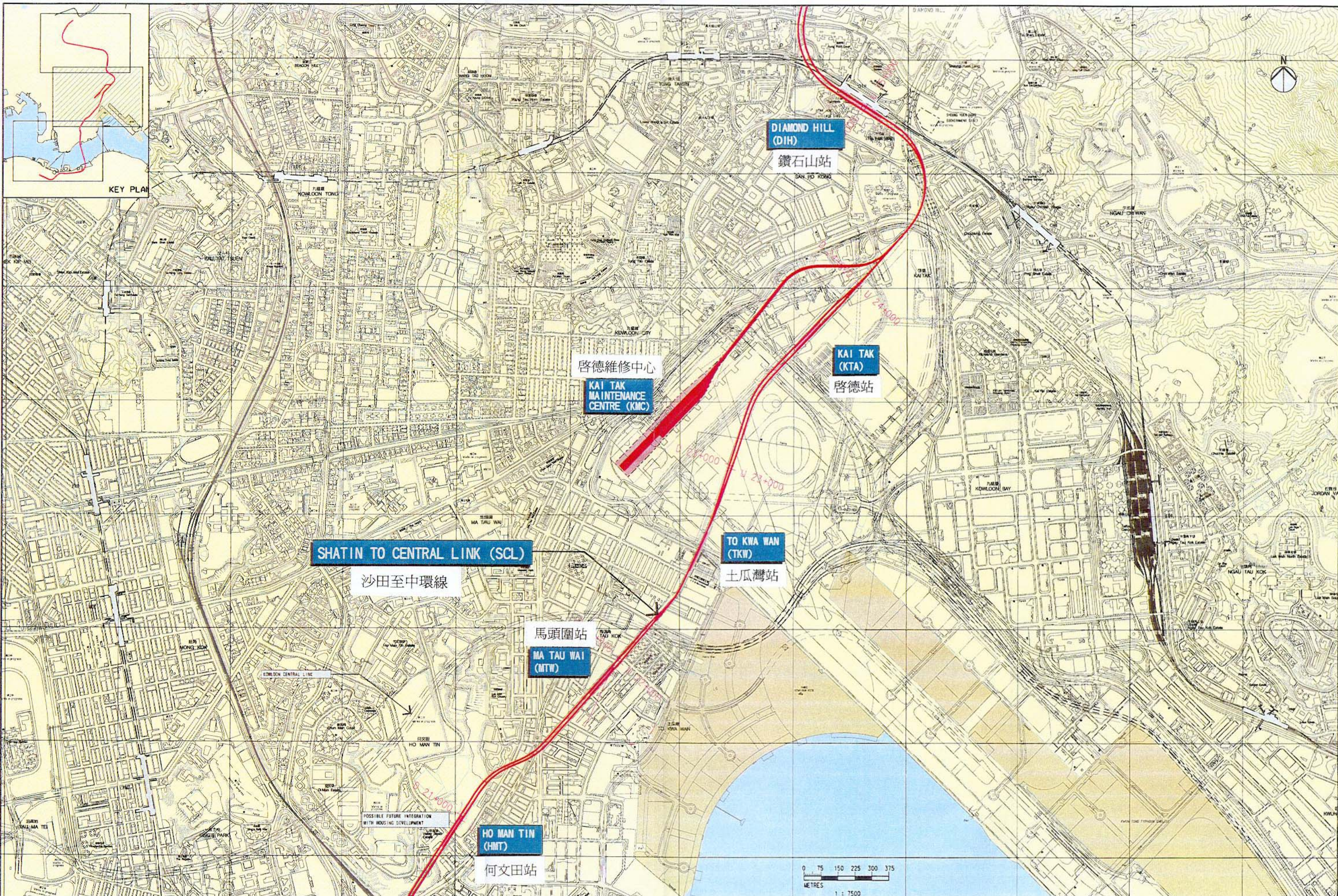


User: workspace c:\cad\apps\ms\workspace\user\8\sluct\ User:Ret n:\MSTN\PEF\SCL-align\_sct500to700.pcf  
 PRINTED BY: a050328 16/09/02 09:43:29 AM PLOT DR: PL TORV...  
 FILENAME: n:\CAD\WP\KEYPLAN\SCL002-CD-0002\_A3.dgn  
 Maps reproduced with permission of The Director of Lands. (C) Hong Kong Government.



REV	DATE	BY	SLB	APP	DESCRIPTION
△	10SEP02	KC	SL		KAITAK DEPOT RENAME TO KAITAK MAINTENANCE CENTRE
△	12AUG02	KC	SL		FIRST ISSUE

DESIGNED BY PAUL LI	 <b>KCR</b> 沙田至中環線 九廣鐵路 Shatin to Central Link
DRAWN BY KC	
CHECKED BY SAM LO	
IN CHARGE J. JESUDASON	
DATE 12AUG2002	

TITLE			
PROJECT LAYOUT PLAN			
定線圖			
ALIGNMENT PLAN			
SHEET 2 OF 3			

SCALE	1:7500	AI
ORIGINATOR	KCR	ORIGINATOR REFERENCE
DRAWING NUMBER	SCL002/CD/00102	REV
RAILWAY	SCL	LOCATION
STAGE	P	SHEET NO