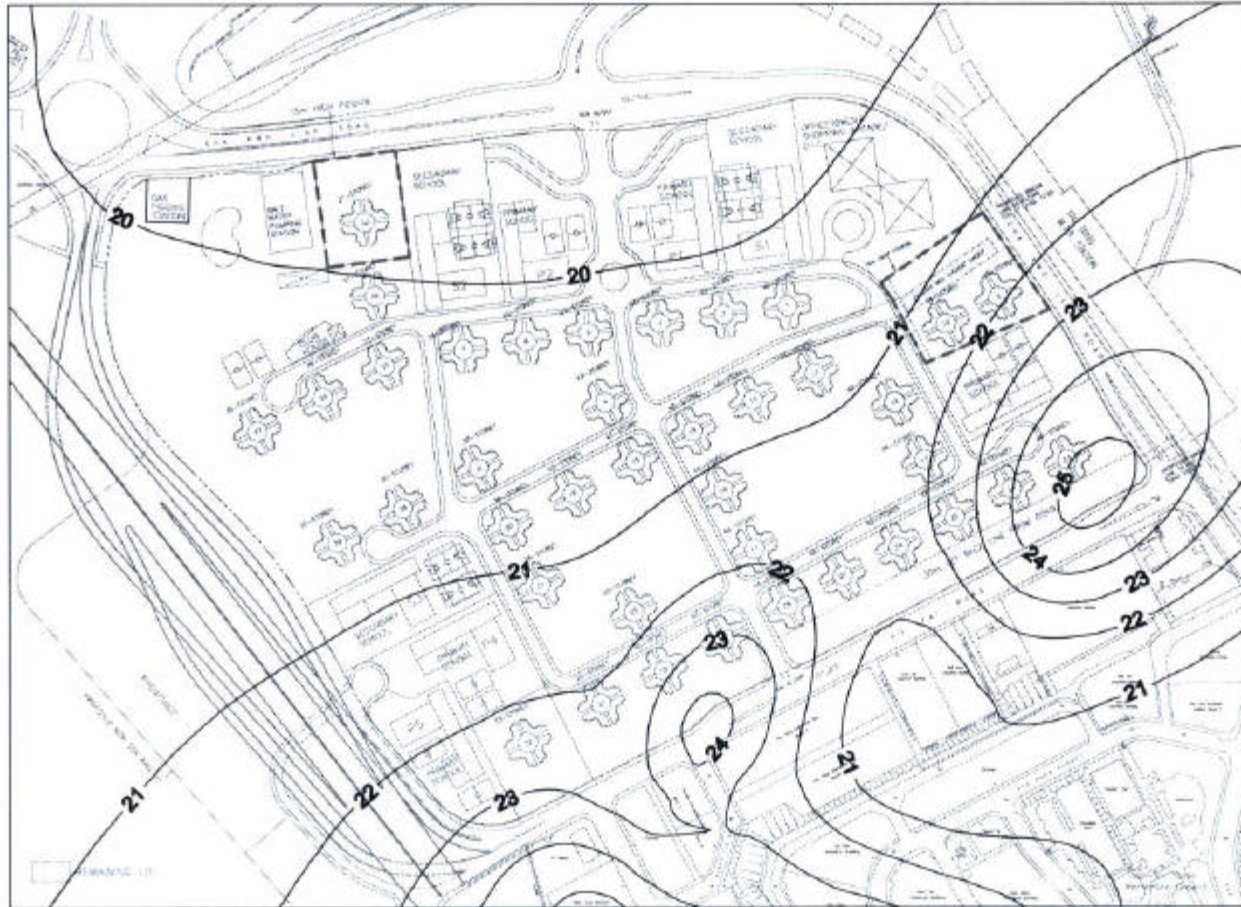


**Contour of Cumulative Annual Average
Sulphur Dioxide Concentration**

Cumulative Sulphur Dioxide Concentration ($\mu\text{g}/\text{m}^3$)

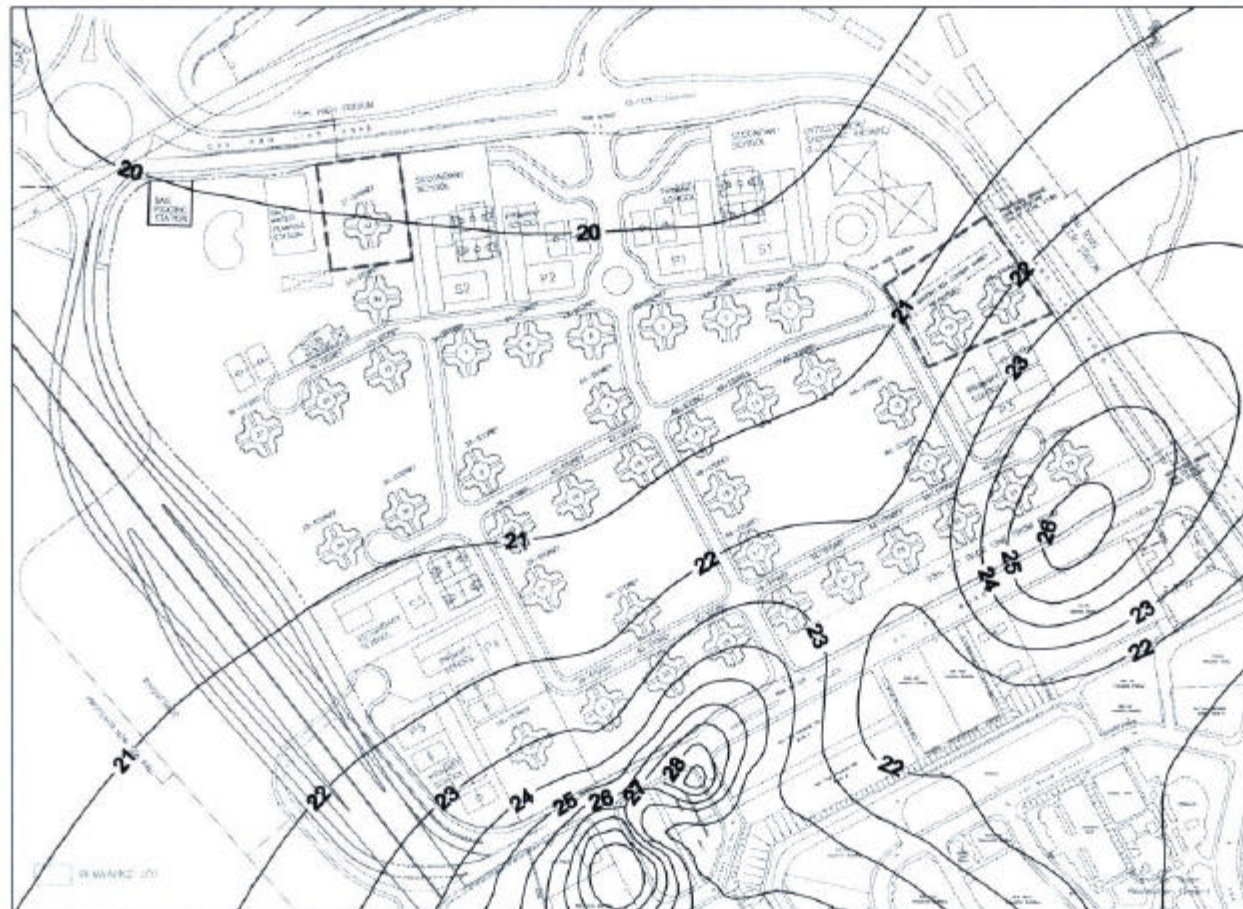


(842570,817880)

(841700,817250)

1/F
+18.0mPD
Annual Average

Cumulative Sulphur Dioxide Concentration ($\mu\text{g}/\text{m}^3$)



(842570,817880)

4/F
+26.4mPD
Annual Average

(841700,817250)

Cumulative Sulphur Dioxide Concentration ($\mu\text{g}/\text{m}^3$)

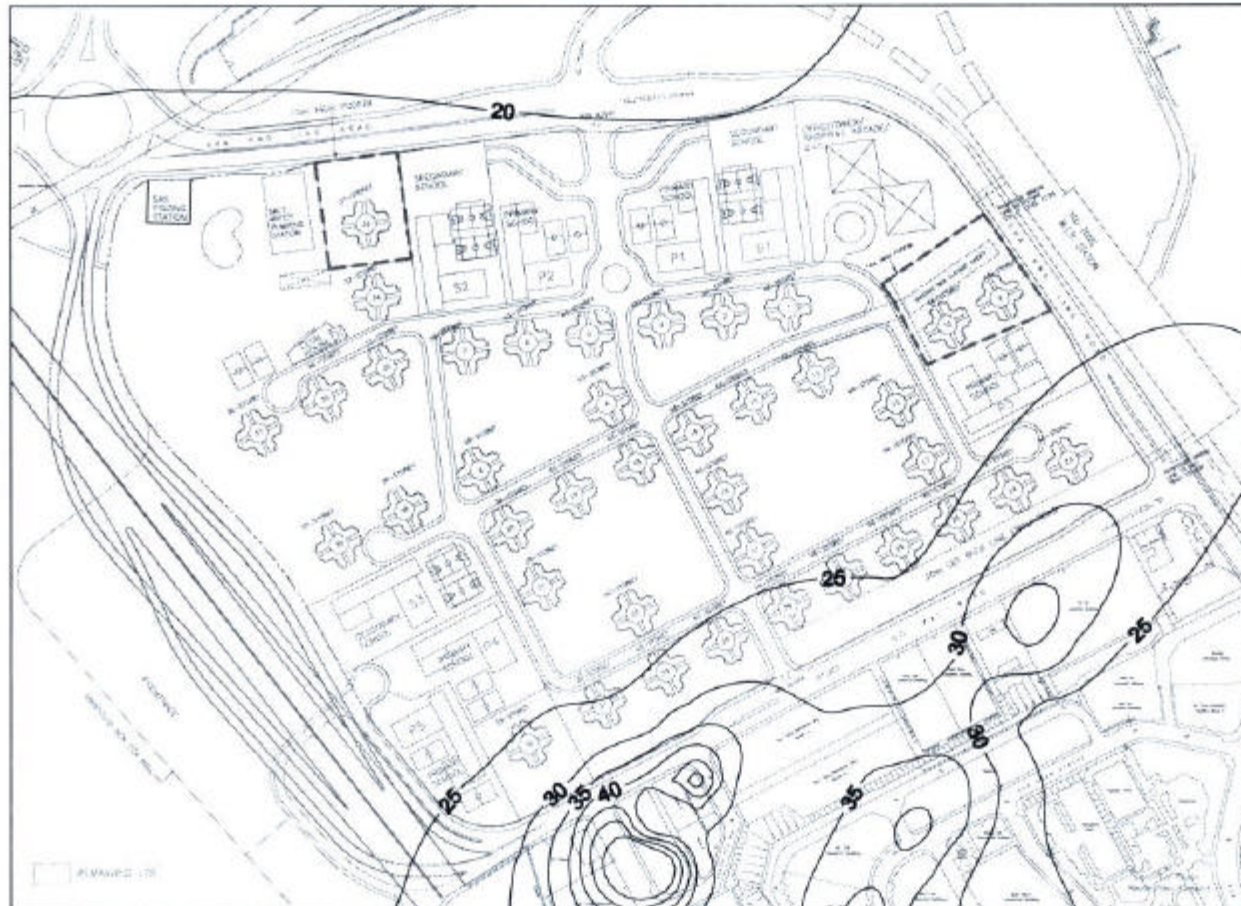


(842570,817880)

7/F
+34.8mPD
Annual Average

(841700,817250)

Cumulative Sulphur Dioxide Concentration ($\mu\text{g}/\text{m}^3$)



(842570,817880)

10/F
+43.2mPD
Annual Average

(841700,817250)



13/F
+51.6mPD
Annual Average

 $(841700, 817250)$

Cumulative Sulphur Dioxide Concentration ($\mu\text{g}/\text{m}^3$)



(842570,817880)

16/F
+60.0mPD
Annual Average

(841700,817250)

Cumulative Sulphur Dioxide Concentration ($\mu\text{g}/\text{m}^3$)

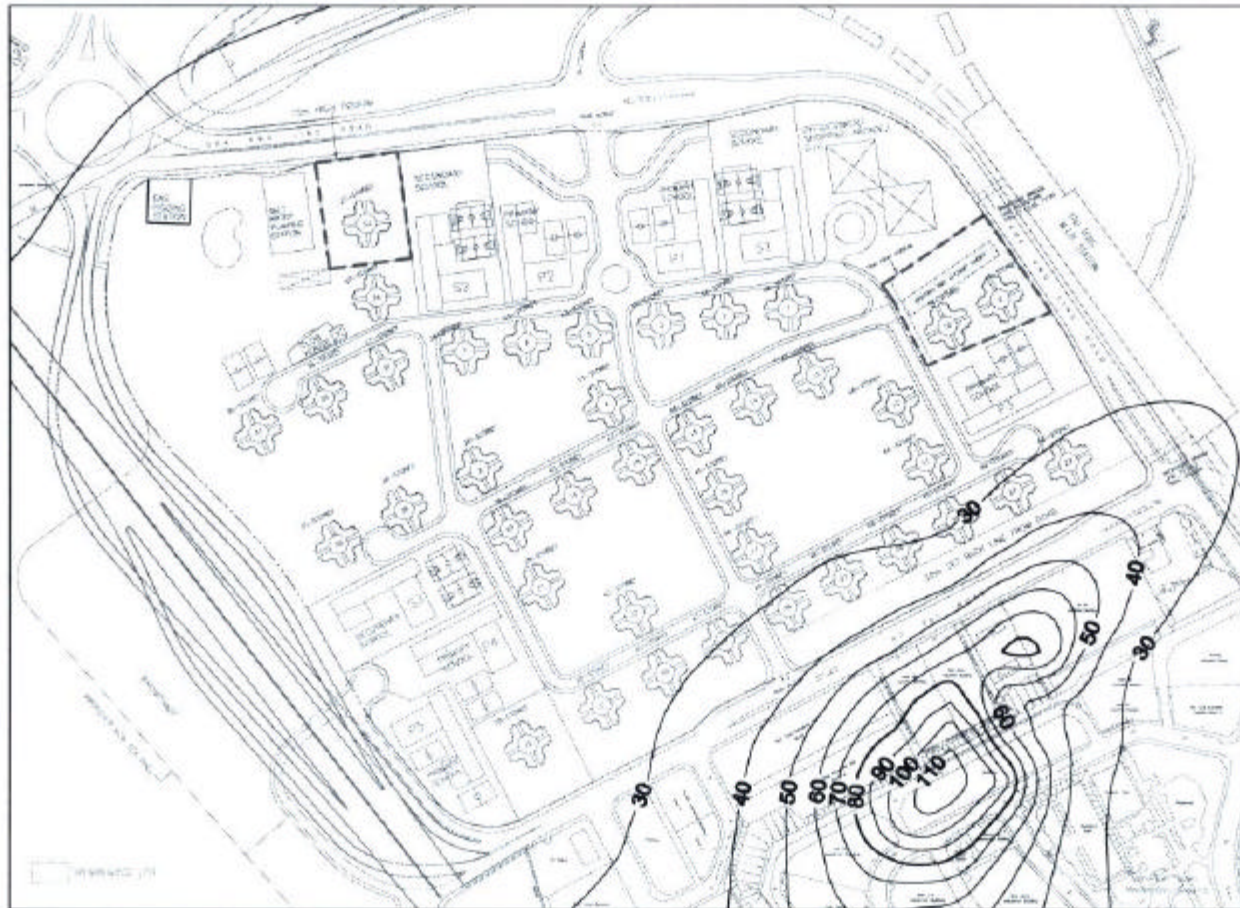


(842570,817880)

19/F
+68.4mPD
Annual Average

(841700,817250)

Cumulative Sulphur Dioxide Concentration ($\mu\text{g}/\text{m}^3$)



(842570,817880)

20/F
+71.2mPD
Annual Average

(841700,817250)

Cumulative Sulphur Dioxide Concentration ($\mu\text{g}/\text{m}^3$)

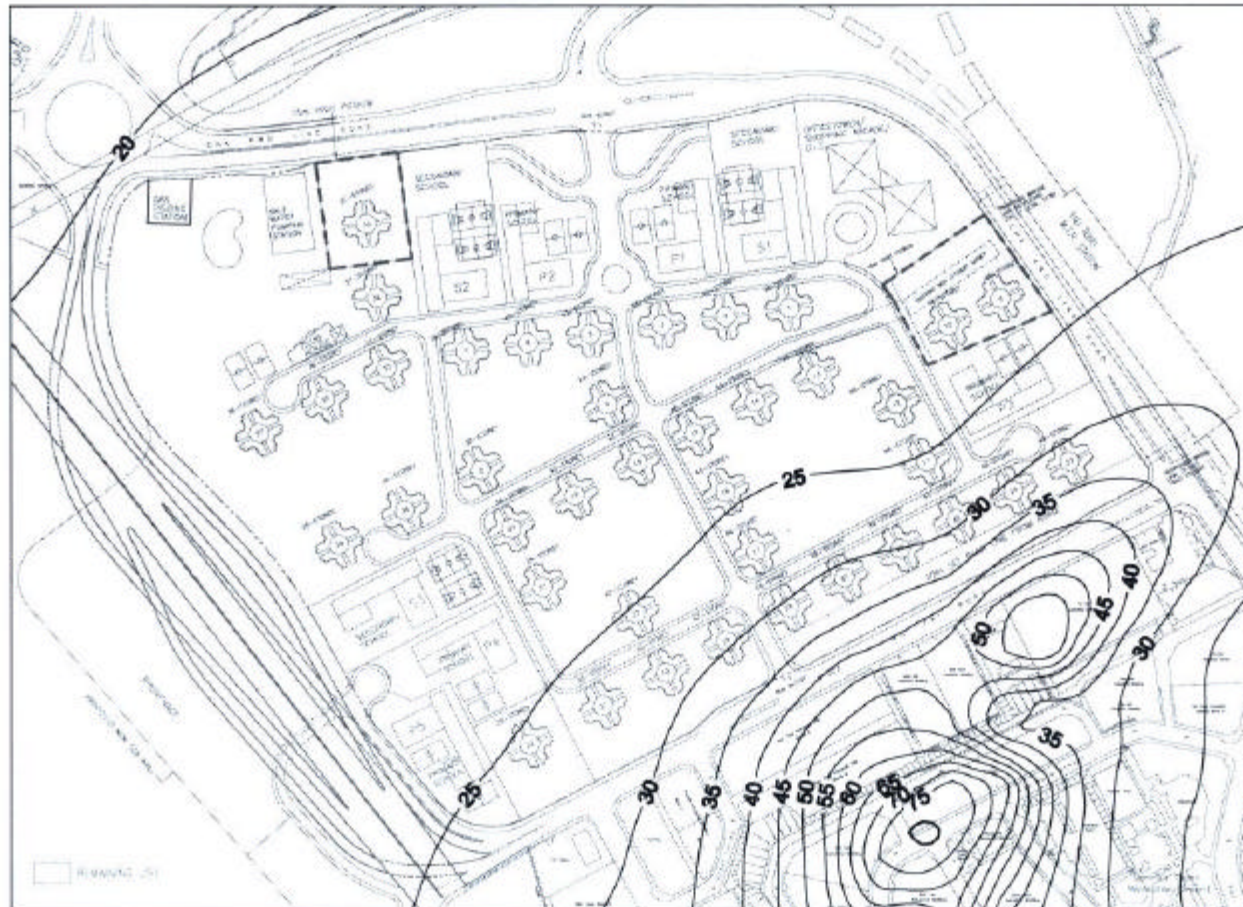


(842570,817880)

21/F
+74.0mPD
Annual Average

(841700,817250)

Cumulative Sulphur Dioxide Concentration ($\mu\text{g}/\text{m}^3$)



(842570,817880)

22/F
+75.8mPD
Annual Average

(841700,817250)

Cumulative Sulphur Dioxide Concentration ($\mu\text{g}/\text{m}^3$)



(842570,817880)

25/F
+85.2mPD
Annual Average

(841700,817250)

Cumulative Sulphur Dioxide Concentration ($\mu\text{g}/\text{m}^3$)



(842570,817880)

28/F
+93.6mPD
Annual Average

(841700,817250)

Cumulative Sulphur Dioxide Concentration ($\mu\text{g}/\text{m}^3$)

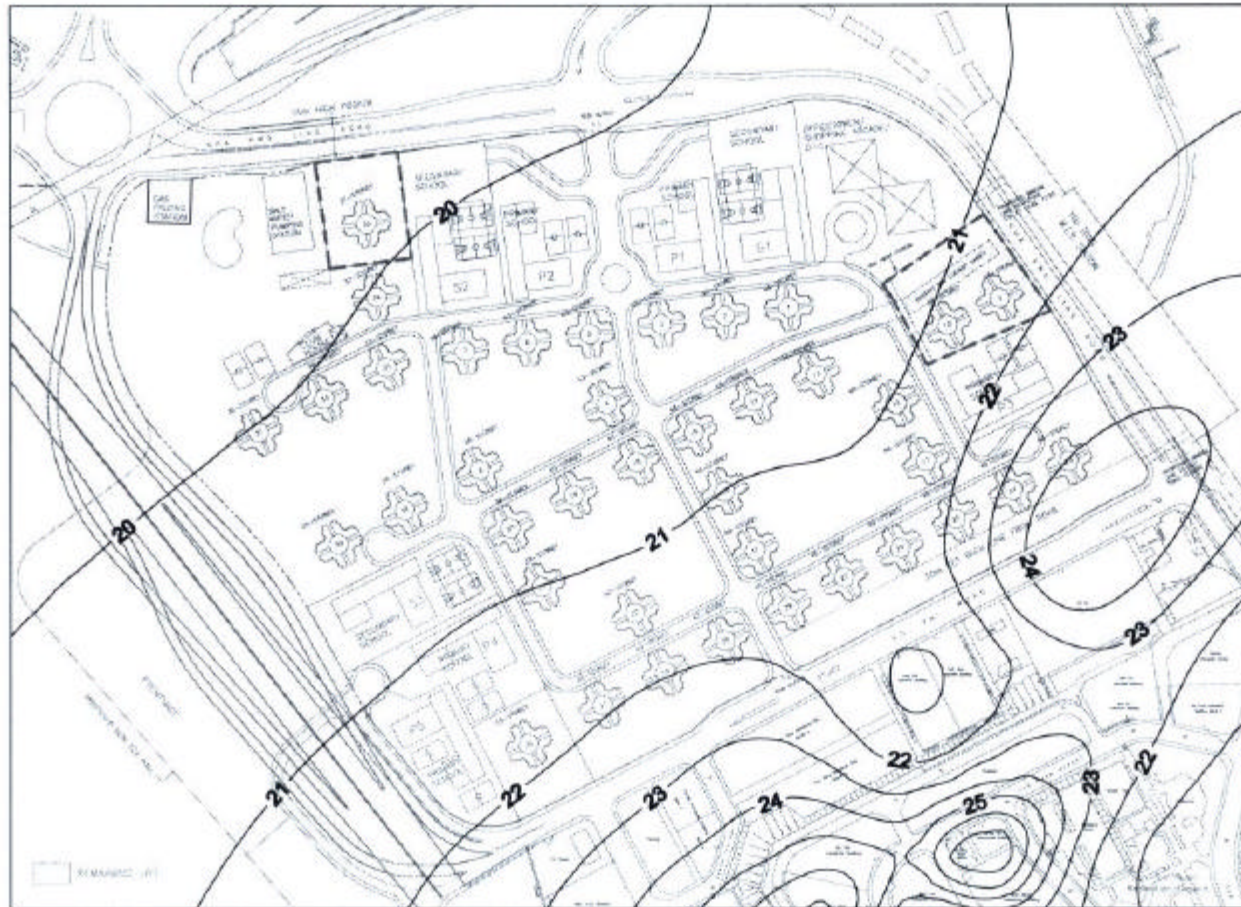


(842570,817880)

31/F
+102.0mPD
Annual Average

(841700,817250)

Cumulative Sulphur Dioxide Concentration ($\mu\text{g}/\text{m}^3$)



(842570,817880)

34/F
+110.4mPD
Annual Average

(841700,817250)

Cumulative Sulphur Dioxide Concentration ($\mu\text{g}/\text{m}^3$)



(842570,817880)

37/F
+118.8mPD
Annual Average

(841700,817250)

Cumulative Sulphur Dioxide Concentration ($\mu\text{g}/\text{m}^3$)



(842570,817880)

(841700,817250)

40/F
+127.2mPD
Annual Average

Cumulative Sulphur Dioxide Concentration ($\mu\text{g}/\text{m}^3$)



(842570,817880)

43/F
+135.6mPD
Annual Average

(841700,817250)