

NOTE :

1/R INTERFACE - STAGE A : 35m x 10m OPENING FOR MAINTENANCE OF WSD PUMPING STATION

1. DEVELOPMENT LAYOUT FOR THE SCENARIO WHEN THE EXISTING INDUSTRIAL OPERATIONS AT DISSIDENTING LOTS STILL OPERATE.
2. TEMPORARY OPEN SPACE TO BE PROVIDED AS BUFFER ZONE AND WILL BE REMOVED FOR BUILDING DEVELOPMENT UPON REMOVAL OF 1/R INTERFACE PROBLEMS.
3. THE MINIMISED RECLAMATION IS MAINLY FOR WCR - TUNNEL OPTION WHICH RUNS FROM TSEUNG KWAN O TO SOUTHEAST KOWLOON VIA AN INLAND TUNNEL. THE ALIGNMENT OF WCR IS NOT SHOWN IN THIS FIGURE FOR CLARITY.

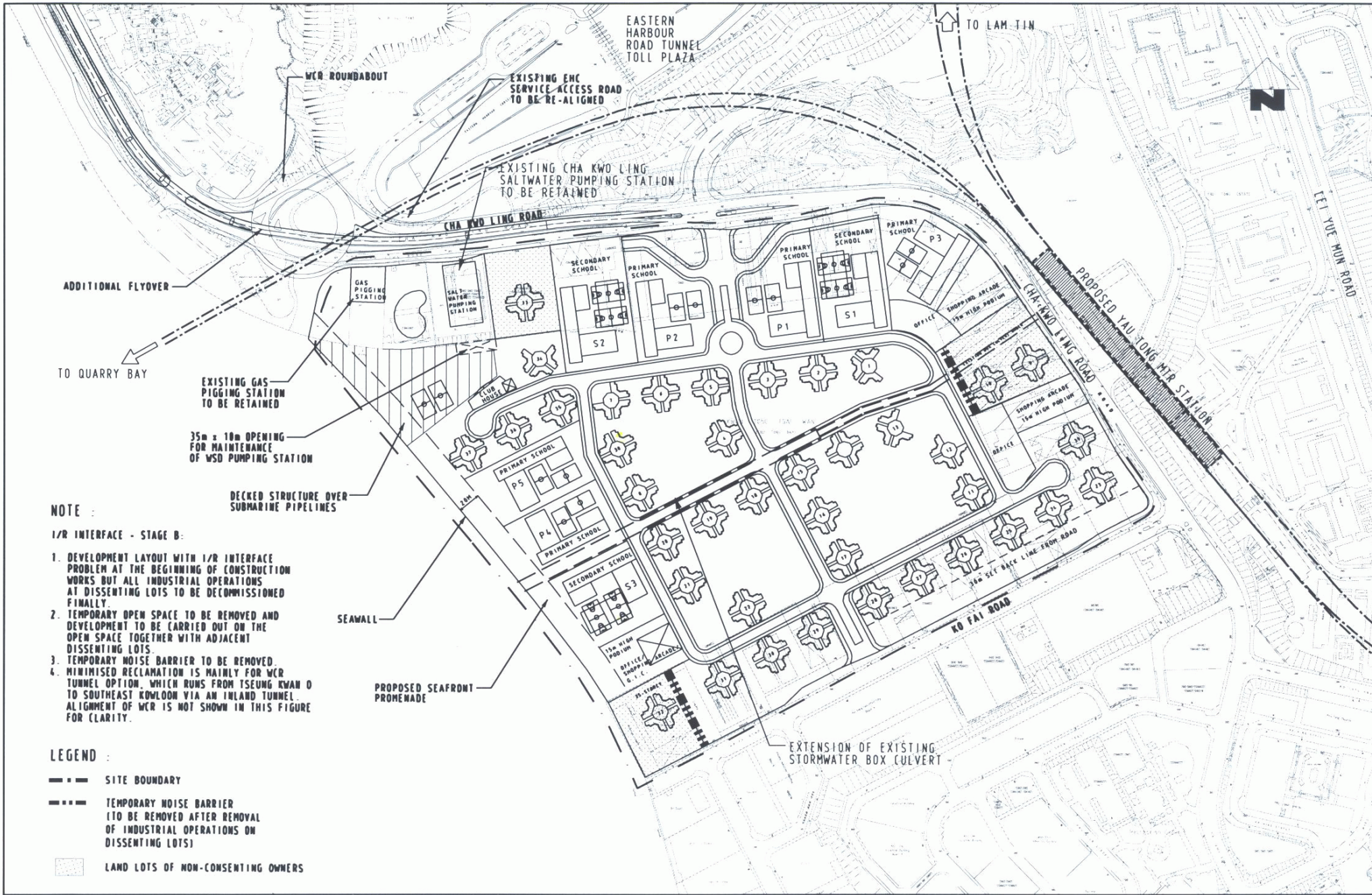
LEGEND :

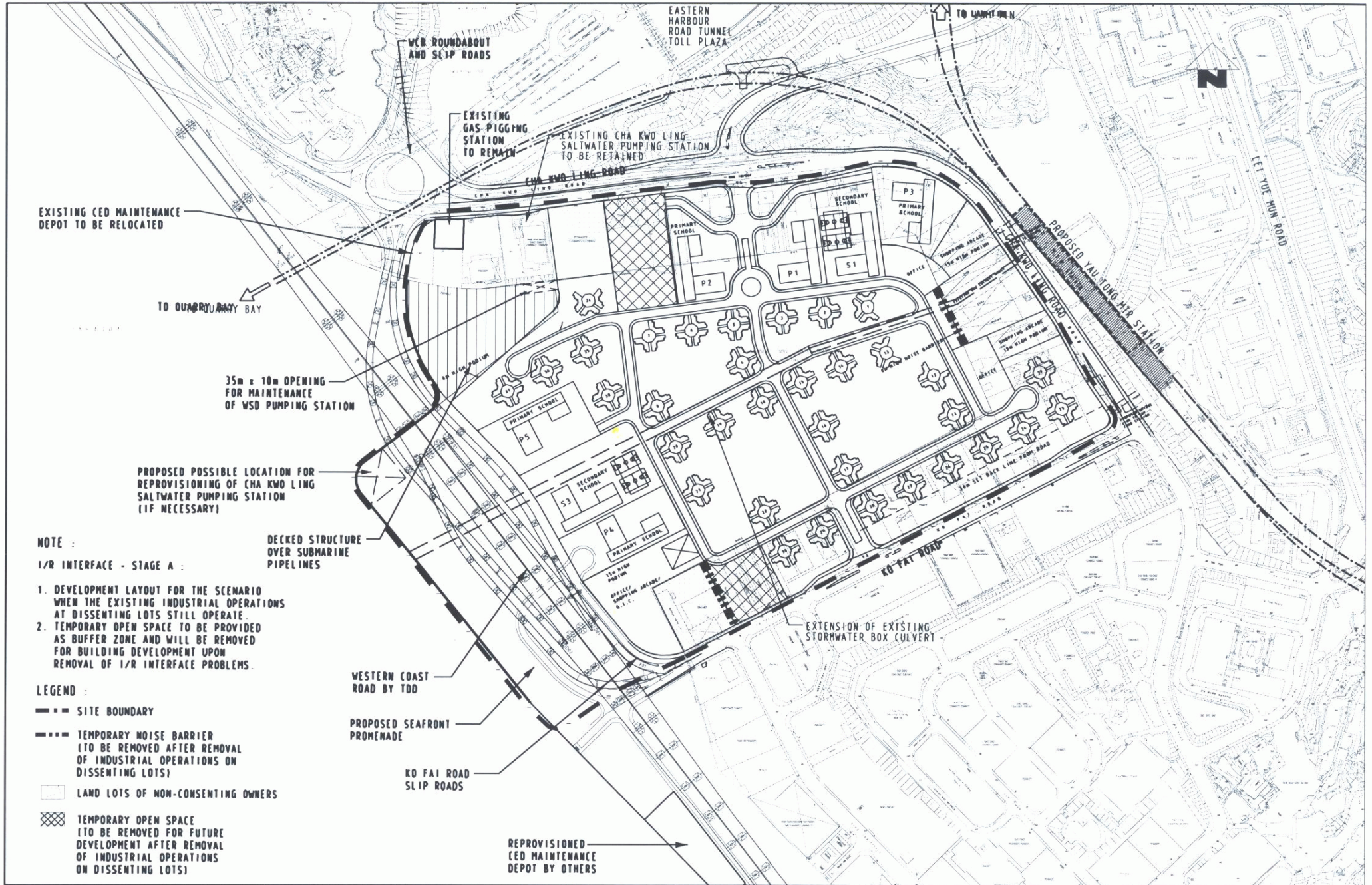
- SITE BOUNDARY
- TEMPORARY NOISE BARRIER (TO BE REMOVED AFTER REMOVAL OF INDUSTRIAL OPERATIONS ON DISSIDENTING LOTS)
- LAND LOTS OF NON-CONSENTING OWNERS
- TEMPORARY OPEN SPACE (TO BE REMOVED FOR FUTURE DEVELOPMENT AFTER REMOVAL OF INDUSTRIAL OPERATIONS ON DISSIDENTING LOTS)

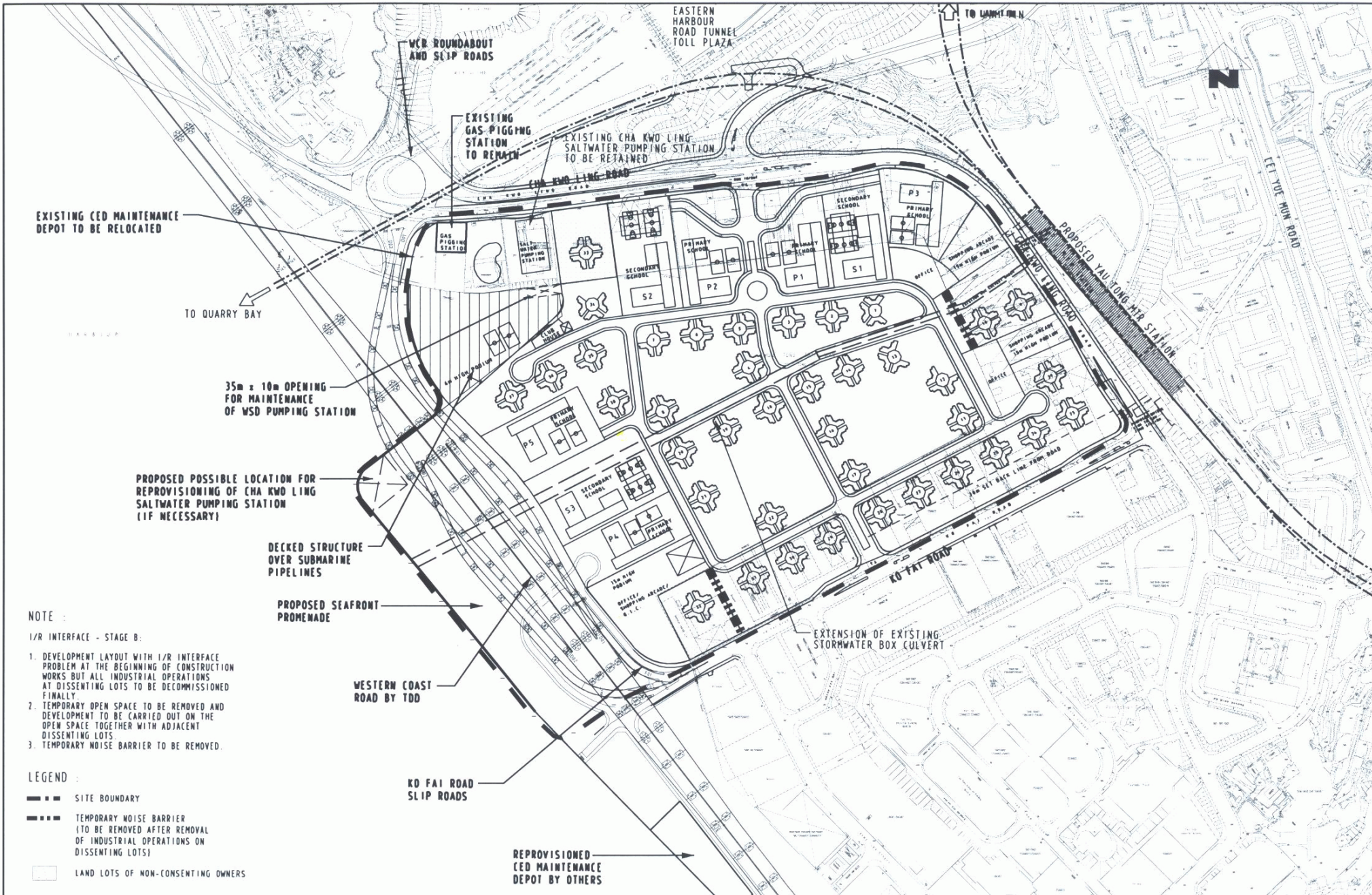
Maunsell in association with
 WHA, DLN,
 EHS, MEMCL, MGS

YAU TONG BAY DEVELOPMENT
 ENVIRONMENTAL IMPACT ASSESSMENT STUDY
 LAYOUT PLAN (MINIMISED RECLAMATION WITH 1/R INTERFACE STAGE A)

MAIN WEALTH DEVELOPMENT LIMITED
 Scale 1 : 3000
 Date SEP 01
 Cod Ref. 96097/01/p2/l1g2-2b.dgn
 Figure No. FIG 2c







NOTE :
 I/R INTERFACE - STAGE B:
 1. DEVELOPMENT LAYOUT WITH I/R INTERFACE PROBLEM AT THE BEGINNING OF CONSTRUCTION WORKS BUT ALL INDUSTRIAL OPERATIONS AT DISSIDENTING LOTS TO BE DECOMMISSIONED FINALLY.
 2. TEMPORARY OPEN SPACE TO BE REMOVED AND DEVELOPMENT TO BE CARRIED OUT ON THE OPEN SPACE TOGETHER WITH ADJACENT DISSIDENTING LOTS.
 3. TEMPORARY NOISE BARRIER TO BE REMOVED.

LEGEND :
 - - - - - SITE BOUNDARY
 - TEMPORARY NOISE BARRIER (TO BE REMOVED AFTER REMOVAL OF INDUSTRIAL OPERATIONS ON DISSIDENTING LOTS)
 □ LAND LOTS OF NON-CONSENTING OWNERS

Maunsell in association with
 WHA, DLN,
 EHS, MEMCL, MGS

YAU TONG BAY DEVELOPMENT
 ENVIRONMENTAL IMPACT ASSESSMENT STUDY
 LAYOUT PLAN (FULL RECLAMATION WITH I/R INTERFACE STAGE B)

MAIN WEALTH DEVELOPMENT LIMITED	
Scale	Cad. Ref.
1 : 3500	66077/01/02/1/ig3-3.dwg
Date	Figure No.
SEP 01	FIG 2f