

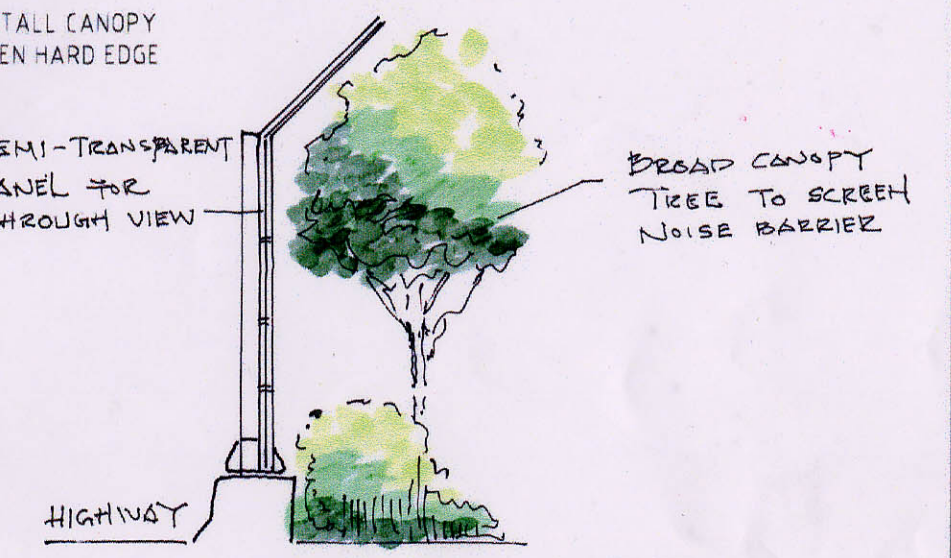
NARROW PLANTER ON BOTH SIDES OF ABUTMEN TO BE PLANTED WITH TALL SHRUB PLANTING TO SOFTEN HARD EDGES OF ABUTMEN WALL

CUTLINE A - A

6M HIGH TREE TALL CANOPY TREE TO SOFTEN HARD EDGE

SEMI-TRANSPARENT PANEL FOR THROUGH VIEW

BROAD CANOPY TREE TO SCREEN NOISE BARRIER



CLIMBER TO SOFTEN HARD EDGES OF ABUTMEN WALL

END SPAN ELEVATION FOR SLIP ROAD
SCALE 1 : 500

☉ CARRIAGEWAY

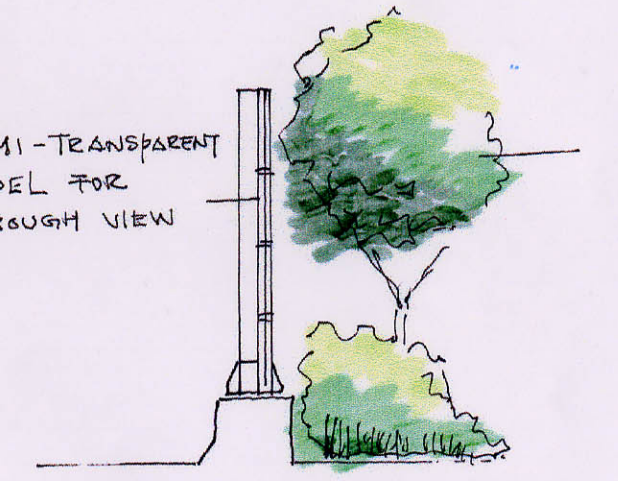
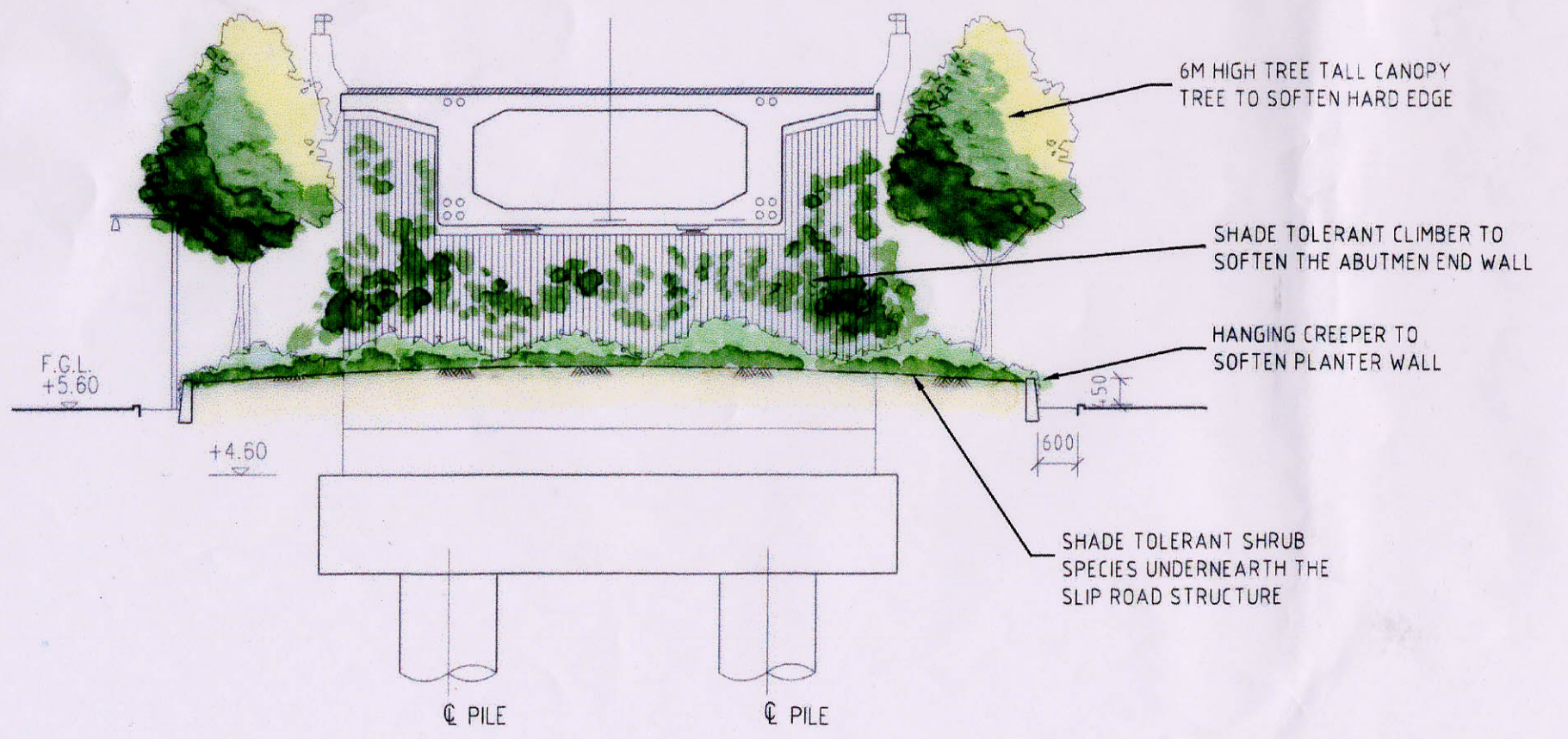
6M HIGH TREE TALL CANOPY TREE TO SOFTEN HARD EDGE

SHADE TOLERANT CLIMBER TO SOFTEN THE ABUTMEN END WALL

HANGING CREEPER TO SOFTEN PLANTER WALL

SEMI-TRANSPARENT PANEL FOR THROUGH VIEW

BROAD CANOPY TREE AND SHRUB PLANTING TO SCREEN NOISE BARRIER

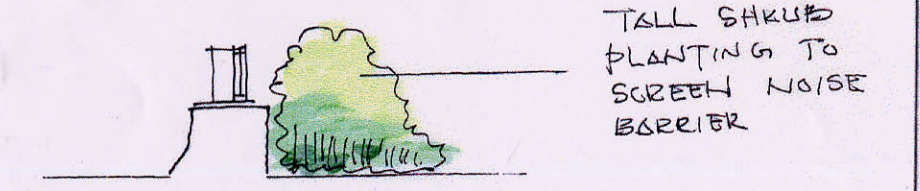


VERTICAL NOISE BARRIER

SECTION A - A
SCALE 1 : 100

AGREEMENT No. CE 38/2002 (HY)
IMPROVEMENTS TO SAN TIN INTERCHANGE - INVESTIGATION

FIGURE 10.30 SLIP ROAD B LANDSCAPE SECTIONS & NOISE BARRIER



1.5 M NOISE BARRIER

SCALE	AS SHOWN	DATE	FEB 03	
CHECK		DRAWN		
JOB No.	95102	DRAWING No.	530	REV A