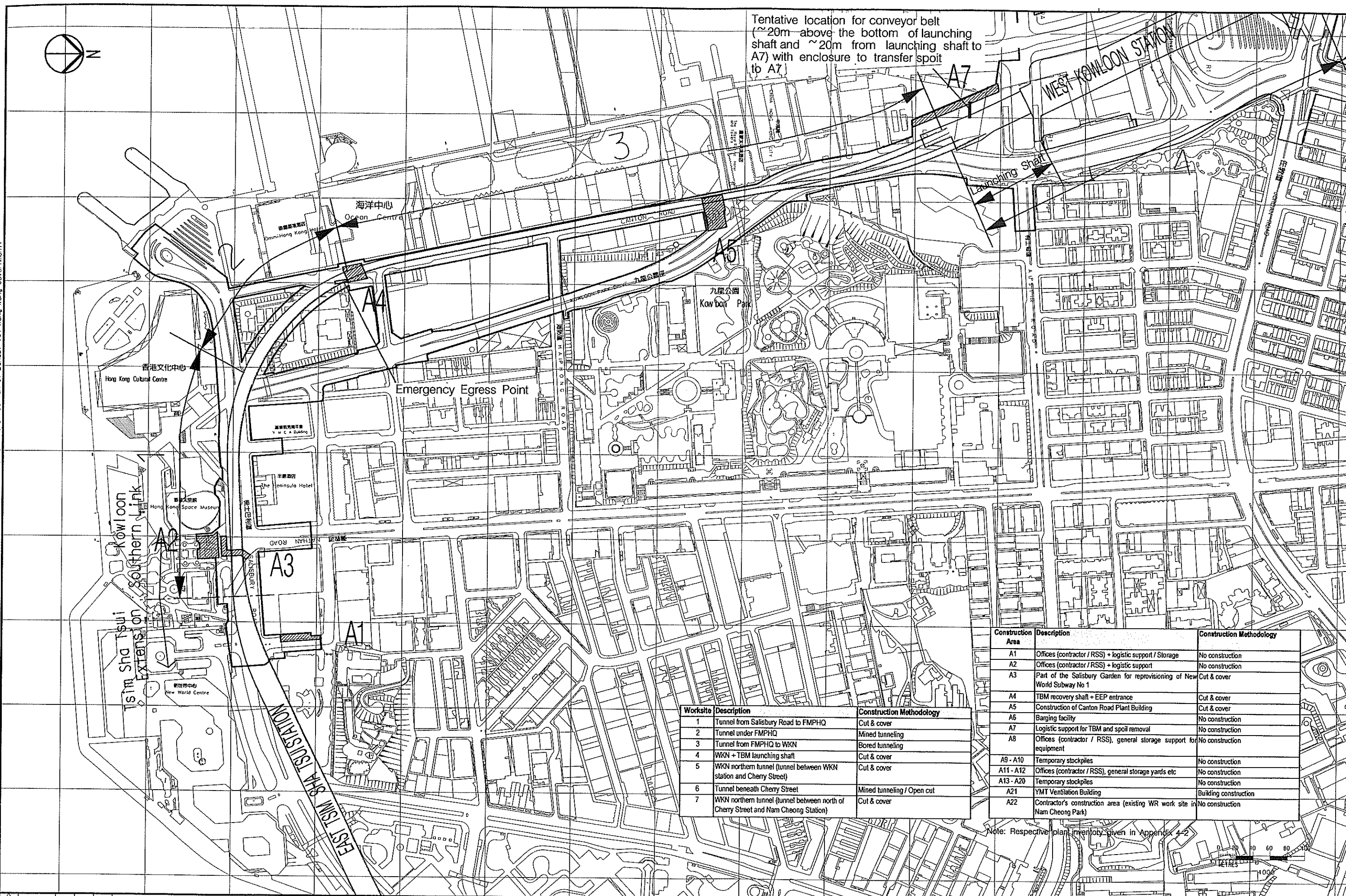


Tentative location for conveyor belt (~20m above the bottom of launching shaft and ~20m from launching shaft to A7) with enclosure to transfer spoil to A7

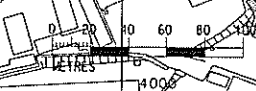
FILENAME: G:\env\project\23573\drawings\3rd EIA-V8\Figure\TEMP_Figure4-1a.dgn
 Maps reproduced with permission of The Director of Lands. (C) Hong Kong Government.



Worksite	Description	Construction Methodology
1	Tunnel from Salisbury Road to FMPHQ	Cut & cover
2	Tunnel under FMPHQ	Mined tunneling
3	Tunnel from FMPHQ to WKN	Bored tunneling
4	WKN + TBM launching shaft	Cut & cover
5	WKN northern tunnel (tunnel between WKN station and Cherry Street)	Cut & cover
6	Tunnel beneath Cherry Street	Mined tunneling / Open cut
7	WKN northern tunnel (tunnel between north of Cherry Street and Nam Cheong Station)	Cut & cover

Area	Description	Construction Methodology
A1	Offices (contractor / RSS) + logistic support / Storage	No construction
A2	Offices (contractor / RSS) + logistic support	No construction
A3	Part of the Salisbury Garden for repositioning of New World Subway No 1	Cut & cover
A4	TBM recovery shaft + EEP entrance	Cut & cover
A5	Construction of Canton Road Plant Building	Cut & cover
A6	Barging facility	No construction
A7	Logistic support for TBM and spoil removal	No construction
A8	Offices (contractor / RSS), general storage support for equipment	No construction
A9 - A10	Temporary stockpiles	No construction
A11 - A12	Offices (contractor / RSS), general storage yards etc	No construction
A13 - A20	Temporary stockpiles	No construction
A21	YMT Ventilation Building	Building construction
A22	Contractor's construction area (existing WR work site in Nam Cheong Park)	No construction

Note: Respective plan inventory given in Appendix 4-2



REV	DATE	BY	SUB	APP	DESCRIPTION
△	DEC2003	SW	FC	ST	EIA REPORT
△	NOV2003	SW	FC	ST	EIA REPORT
△	30MAY2003	SW	FC	ST	EIA REPORT
△	7MAR2003	SW	FC	ST	EIA REPORT (2ND DRAFT)
△	11OCT2002	SW	FC	ST	EIA REPORT (1ST DRAFT)

DESIGNED BY SW
 DRAWN BY RL
 CHECKED BY FC
 IN CHARGE ST
 DATE 5 DEC 2003



New Railway Projects
新鐵路策劃

奧雅納工程顧問
Ove Arup & Partners Hong Kong Limited



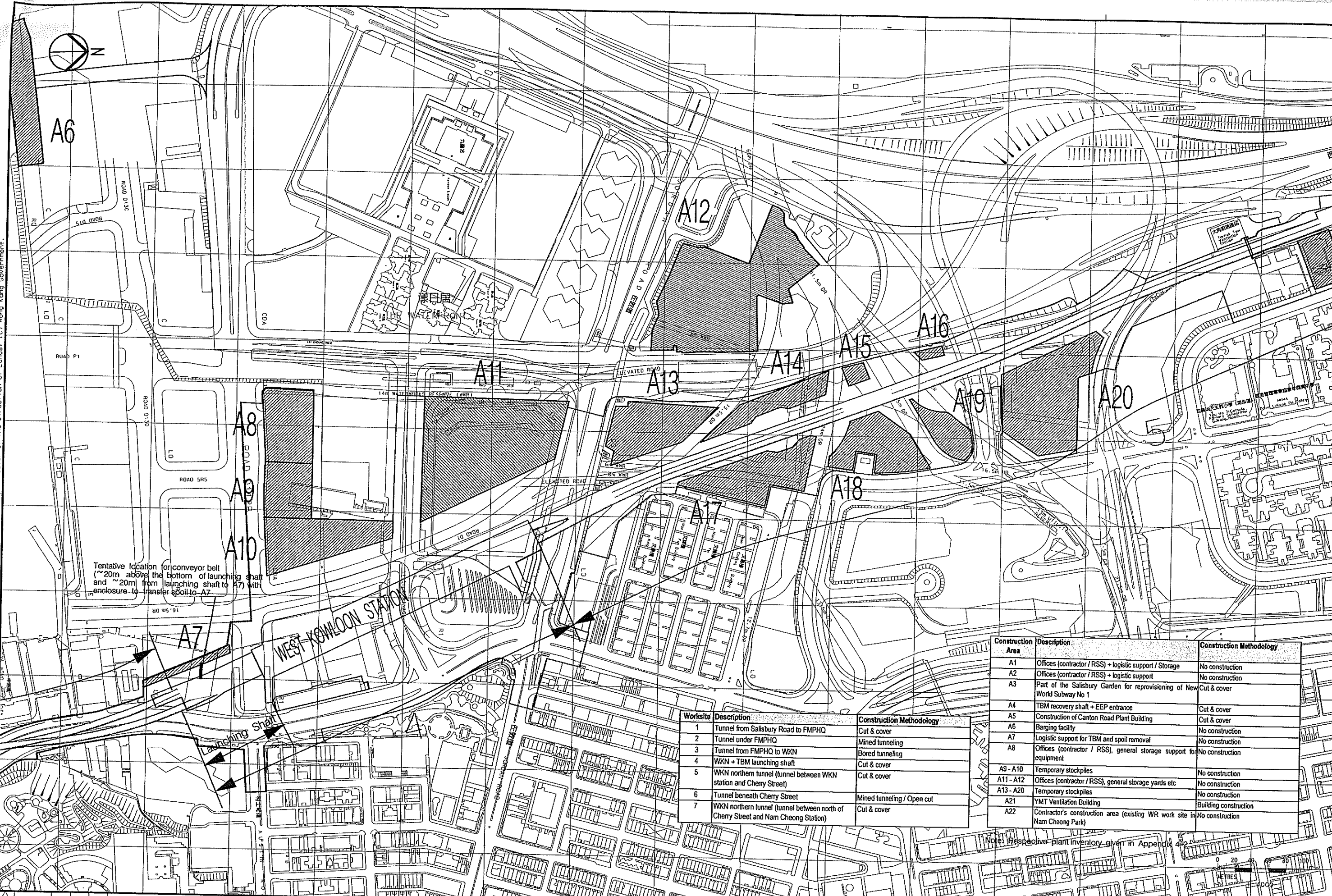
KOWLOON SOUTHERN LINK KSL GSA-5100
EIA & ASSOCIATED SERVICES

CONSTRUCTION METHODOLOGY AND CONSTRUCTION AREA PLAN

CADD FILENAME	CADD DATE
SCALE	1 : 4000 @ A3
DRAWING NUMBER	FIGURE 4-1-1
SHEET NO	1 OF 3
STAGE CODE	P
REV	E

Maps reproduced with permission of The Director of Lands. (C) Hong Kong Government.

FILENAME: G:\env\project\23573\drawings\3rd EA\VE\Figure\Figure4-1-2.dwg



Tentative location for conveyor belt (~20m above the bottom of launching shaft and ~20m from launching shaft to A7) with enclosure to transfer spoil to A7

Launching Shaft

WEST KOWLOON STATION

Worksite	Description	Construction Methodology
1	Tunnel from Salisbury Road to FMPHQ	Cut & cover
2	Tunnel under FMPHQ	Mined tunneling
3	Tunnel from FMPHQ to WKN	Bored tunneling
4	WKN + TBM launching shaft	Cut & cover
5	WKN northern tunnel (tunnel between WKN station and Cherry Street)	Cut & cover
6	Tunnel beneath Cherry Street	Mined tunneling / Open cut
7	WKN northern tunnel (tunnel between north of Cherry Street and Nam Cheong Station)	Cut & cover

Construction Area	Description	Construction Methodology
A1	Offices (contractor / RSS) + logistic support / Storage	No construction
A2	Offices (contractor / RSS) + logistic support	No construction
A3	Part of the Salisbury Garden for reprovisioning of New World Subway No 1	Cut & cover
A4	TBM recovery shaft + EEP entrance	Cut & cover
A5	Construction of Canton Road Plant Building	Cut & cover
A6	Barging facility	No construction
A7	Logistic support for TBM and spoil removal	No construction
A8	Offices (contractor / RSS), general storage support for equipment	No construction
A9 - A10	Temporary stockpiles	No construction
A11 - A12	Offices (contractor / RSS), general storage yards etc	No construction
A13 - A20	Temporary stockpiles	No construction
A21	YMT Ventilation Building	Building construction
A22	Contractor's construction area (existing WR work site in Nam Cheong Park)	No construction

Note: Respective plant inventory given in Appendix 4.2

REV	DATE	BY	SUB	APP	DESCRIPTION
△	DEC2003	SW	FC	ST	E1A REPORT
△	NOV2003	SW	FC	ST	E1A REPORT
△	30MAY2003	SW	FC	ST	E1A REPORT
△	7MAR2003	SW	FC	ST	E1A REPORT (2ND DRAFT)
△	11OCT2002	SW	FC	ST	E1A REPORT (1ST DRAFT)

DESIGNED BY	SW
DRAWN BY	RL
CHECKED BY	FC
IN CHARGE	ST
DATE	5 DEC 2003

KCR New Railway Projects
新鐵路策劃

奧雅納工程顧問
Ove Arup & Partners Hong Kong Limited

ARUP

KOWLOON SOUTHERN LINK KSL GSA-5100
EIA & ASSOCIATED SERVICES

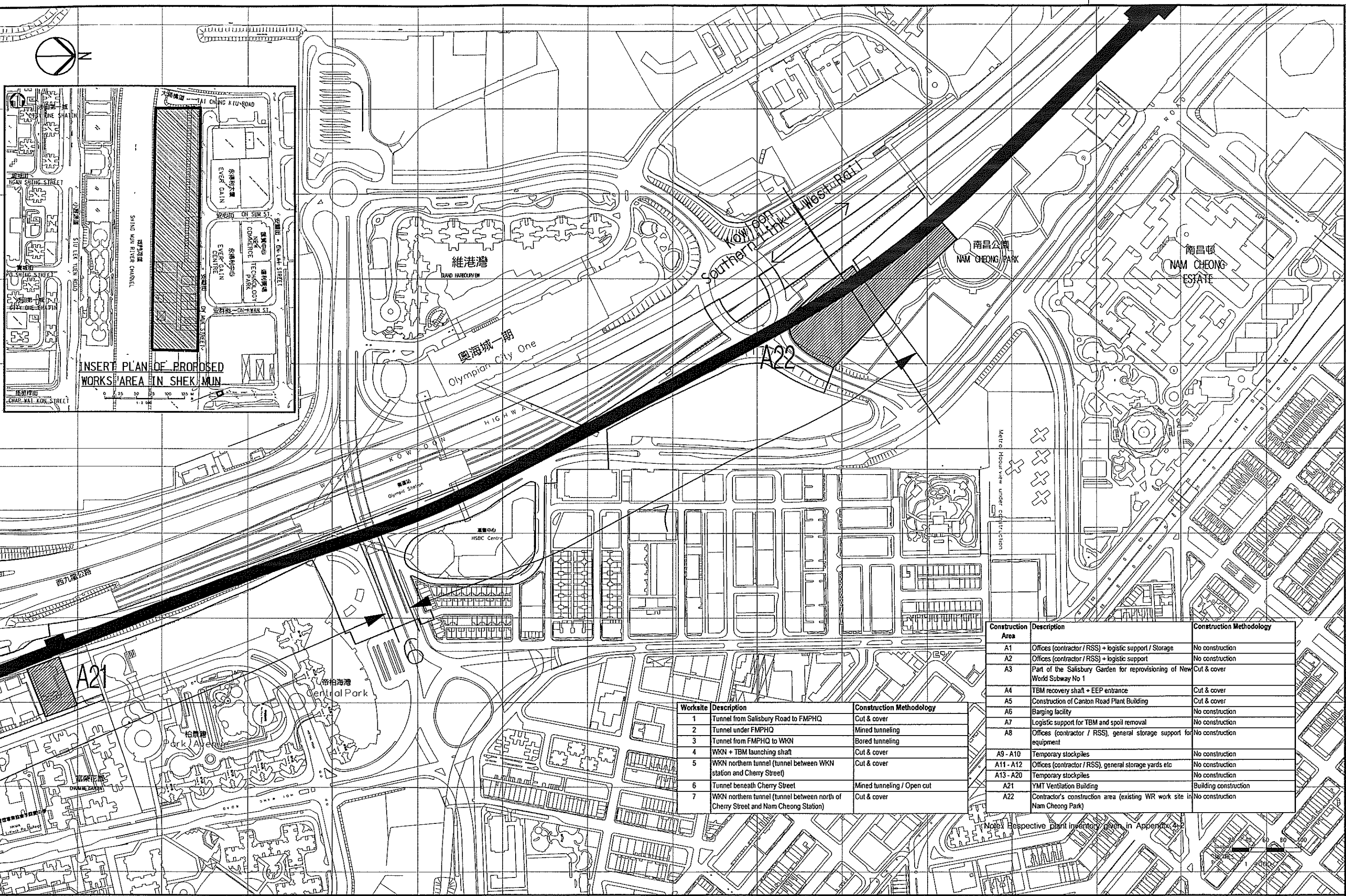
CONSTRUCTION METHODOLOGY
AND CONSTRUCTION ARFA PI AN

SCALE: 1 : 4000 @ A3

FIGURE 4-1-2

Map reproduced with permission of The Director of Lands, (C) Hong Kong Government.

FILENAME: G:\env\project\23571\drawings\3rd EIA-V8\Figure 4-1-3.dgn



Worksite	Description	Construction Methodology
1	Tunnel from Salisbury Road to FMPHQ	Cut & cover
2	Tunnel under FMPHQ	Mined tunneling
3	Tunnel from FMPHQ to WKN	Bored tunneling
4	WKN + TBM launching shaft	Cut & cover
5	WKN northern tunnel (tunnel between WKN station and Cherry Street)	Cut & cover
6	Tunnel beneath Cherry Street	Mined tunneling / Open cut
7	WKN northern tunnel (tunnel between north of Cherry Street and Nam Cheong Station)	Cut & cover

Construction Area	Description	Construction Methodology
A1	Offices (contractor / RSS) + logistic support / Storage	No construction
A2	Offices (contractor / RSS) + logistic support	No construction
A3	Part of the Salisbury Garden for re-provisioning of New World Subway No 1	Cut & cover
A4	TBM recovery shaft + EEP entrance	Cut & cover
A5	Construction of Canton Road Plant Building	Cut & cover
A6	Barging facility	No construction
A7	Logistic support for TBM and spoil removal	No construction
A8	Offices (contractor / RSS), general storage support for equipment	No construction
A9 - A10	Temporary stockpiles	No construction
A11 - A12	Offices (contractor / RSS), general storage yards etc	No construction
A13 - A20	Temporary stockpiles	No construction
A21	YMT Ventilation Building	Building construction
A22	Contractor's construction area (existing WR work site in Nam Cheong Park)	No construction

Note: Respective plant inventory given in Appendix 4-2

REV	DATE	BY	SUB	APP	DESCRIPTION
△	DEC2003	SW	FC	ST	EIA REPORT
△	NOV2003	SW	FC	ST	EIA REPORT
△	30MAY2003	SW	FC	ST	EIA REPORT
△	7MAR2003	SW	FC	ST	EIA REPORT (2ND DRAFT)
△	11OCT2002	SW	FC	ST	EIA REPORT (1ST DRAFT)

DESIGNED BY	SW
DRAWN BY	RL
CHECKED BY	FC
IN CHARGE	ST
DATE	5 DEC 2003



New Railway Projects
新鐵路策劃

奧雅納工程顧問
Ove Arup & Partners Hong Kong Limited



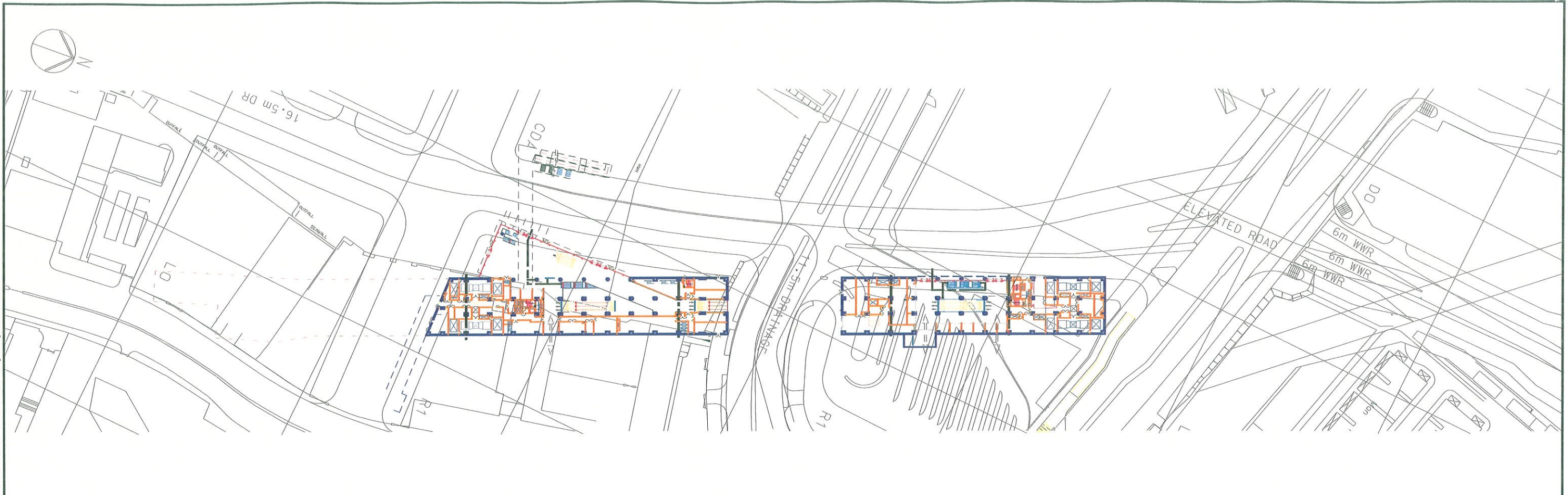
KOWLOON SOUTHERN LINK KSL GSA-5100
EIA & ASSOCIATED SERVICES

CONSTRUCTION METHODOLOGY
AND CONSTRUCTION AREA PLAN

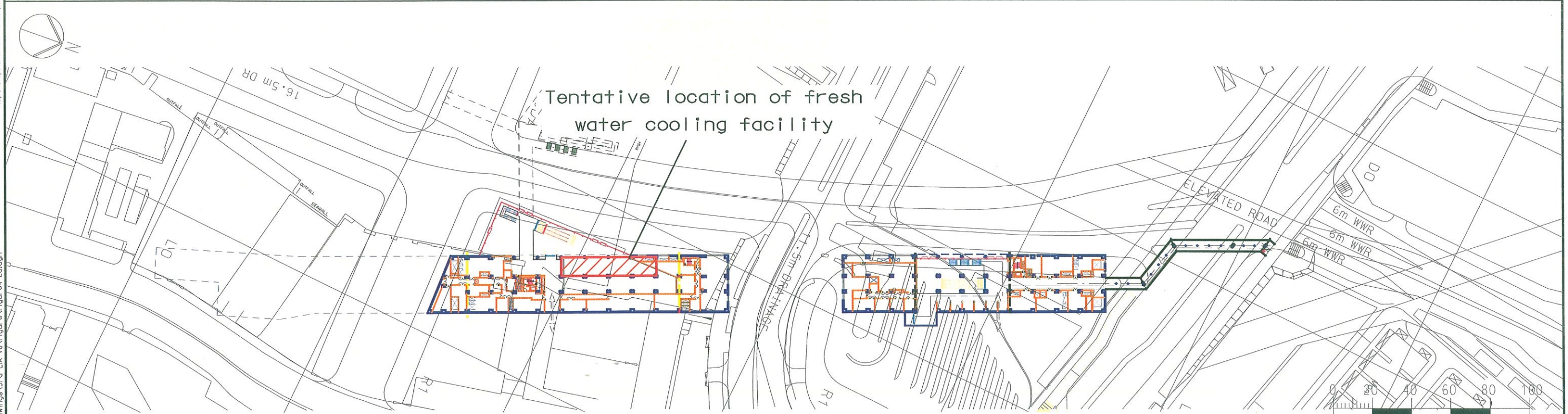
CADD TITRENAME	KSL GSA-5100
CADD DATE	5 DEC 2003
SCALE	1 : 4000 e A3
DRAWING NUMBER	FIGURE 4-1-3
SHEET NO	3 OF 3
STAGE CODE	P
REV	E

Maps reproduced with permission of The Director of Lands, (C) Hong Kong Government.

FILENAME: G:\env\project\23573\drawings\3rd EIA-V8\Figure\Figure4-2a.dgn



GROUND LEVEL



FIRST FLOOR LEVEL



1 : 2000

REV	DATE	BY	SUB	APP	DESCRIPTION
△	DEC2003	SW	FC	ST	EIA REPORT
△	NOV2003	SW	FC	ST	EIA REPORT
△	JUNE2003	SW	FC	ST	EIA REPORT
△	7MAR2003	SW	FC	ST	EIA REPORT (2ND DRAFT)
△	11OCT2002	SW	FC	ST	EIA REPORT (1ST DRAFT)

DESIGNED BY	SW
DRAWN BY	JF
CHECKED BY	FC
IN CHARGE	ST
DATE	5 DEC 2003


New Railway Projects
 新鐵路策劃

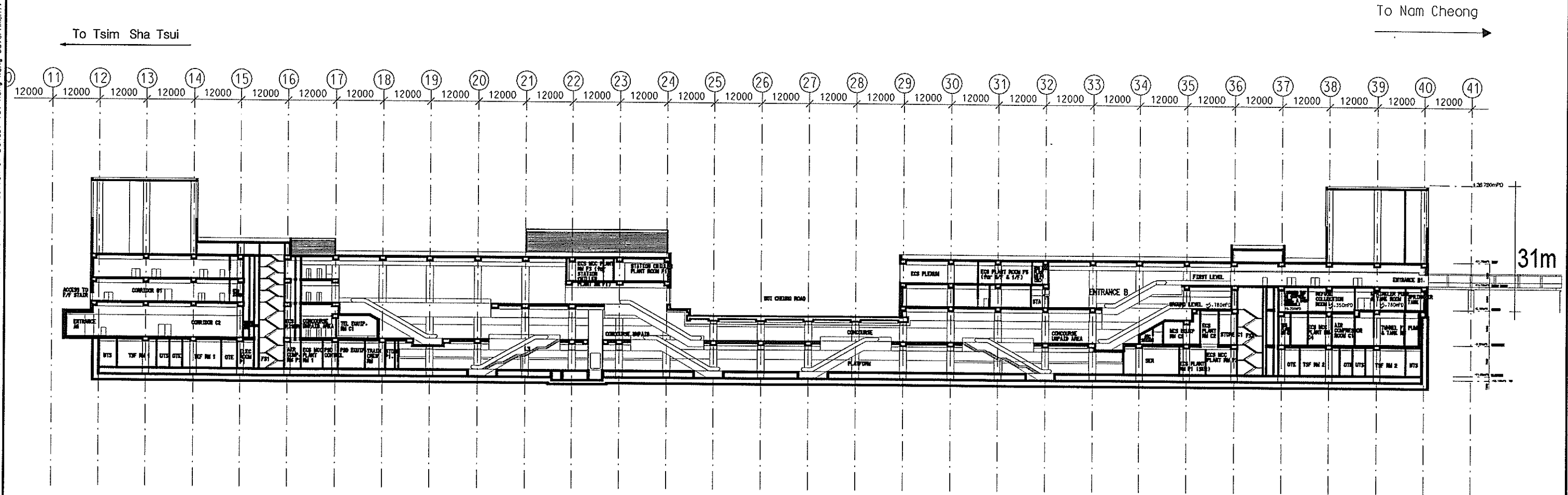
 Ove Arup & Partners Hong Kong Limited

KOWLOON SOUTHERN LINK KSL GSA-5100
EIA & ASSOCIATED SERVICES
STATION LAYOUT - WKN STATION

CADD FILENAME	CADD DATE
SCALE	1:2000 @ A3
DRAWING NUMBER	FIGURE 4-2-1
SHEET NO	STAGE CODE REV
1 OF 2	P E

Maps reproduced with permission of The Director of Lands. (c) Hong Kong Government.

FILENAME: G:\env\proj\act\23573\drawings\3rd EIA\8\figure\figure4-2b.dgn



REV	DATE	BY	SUB	APP	DESCRIPTION
△	DEC2003	SW	FC	ST	EIA REPORT
△	NOV2003	SW	FC	ST	EIA REPORT
△	JUNE2003	SW	FC	ST	EIA REPORT
△	7MAR2003	SW	FC	ST	EIA REPORT (2ND DRAFT)
△	11OCT2002	SW	FC	ST	EIA REPORT (1ST DRAFT)

DESIGNED BY	SW
DRAWN BY	JF
CHECKED BY	FC
IN CHARGE	ST
DATE	5 DEC 2003

New Railway Projects

新鐵路策劃

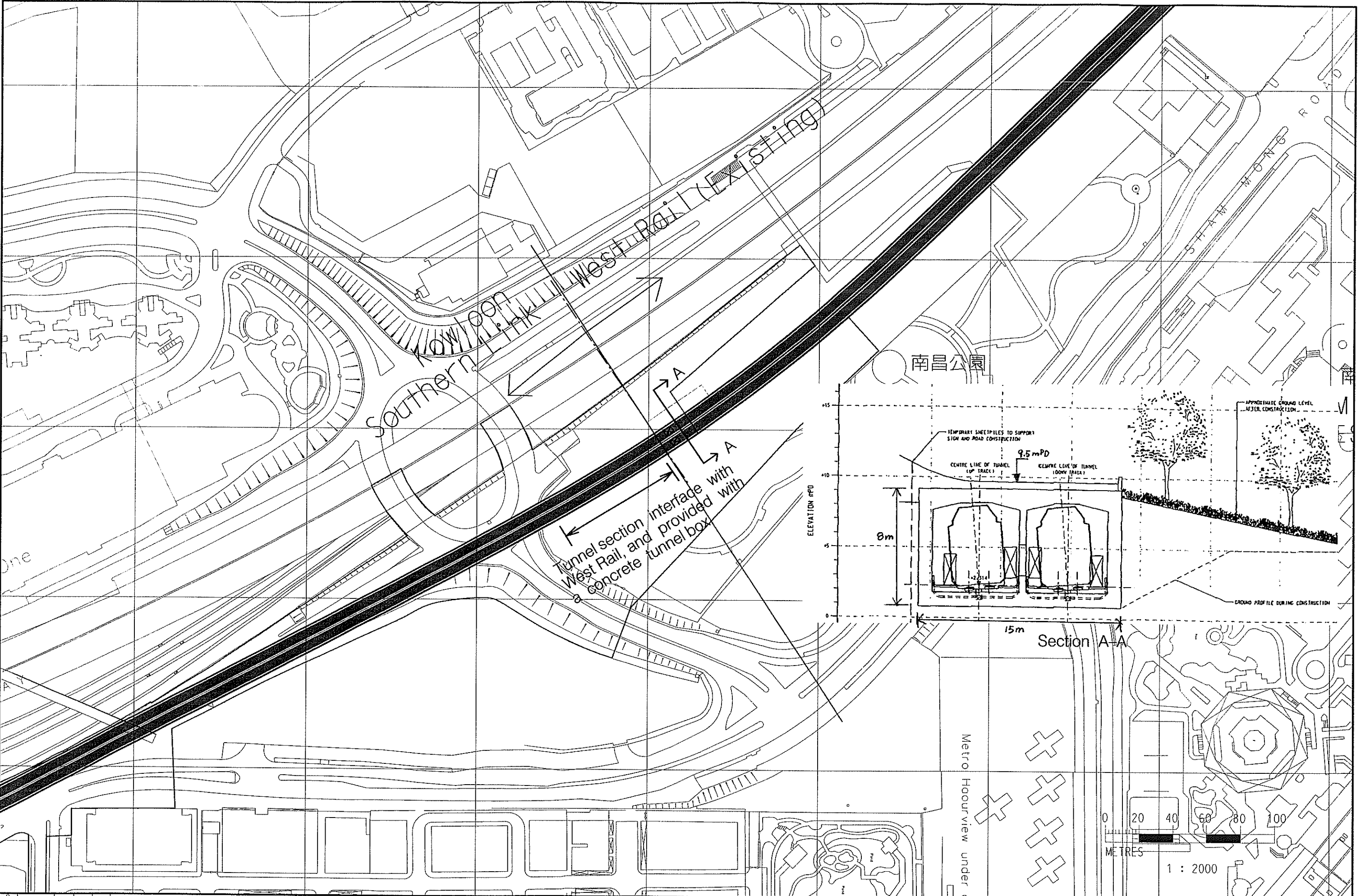
Ove Arup & Partners Hong Kong Limited

KOWLOON SOUTHERN LINK KSL GSA-5100
EIA & ASSOCIATED SERVICES
STATION LAYOUT - WKN STATION
LONGITUDINAL SECTION

CADD FILENAME	CADD DATE
SCALE	NOT TO SCALE
DRAWING NUMBER	
FIGURE 4-2-2	
SHEET NO	STAGE CODE / REV
2 OF 2	P E

Maps reproduced with permission of The Director of Lands. (C) Hong Kong Government.

FILENAME: G:\env\proj\act\23513\dr\dwg\3rd EIA-V8\Figure\Figure4-3.dgn



REV	DATE	BY	SUB	APP	DESCRIPTION
△	DEC2003	SW	FC	ST	EIA REPORT
△	NOV2003	SW	FC	ST	EIA REPORT
△	JUNE2003	SW	FC	ST	EIA REPORT
△	7MAR2003	SW	FC	ST	EIA REPORT (2ND DRAFT)
△	11OCT2002	SW	FC	ST	EIA REPORT (1ST DRAFT)

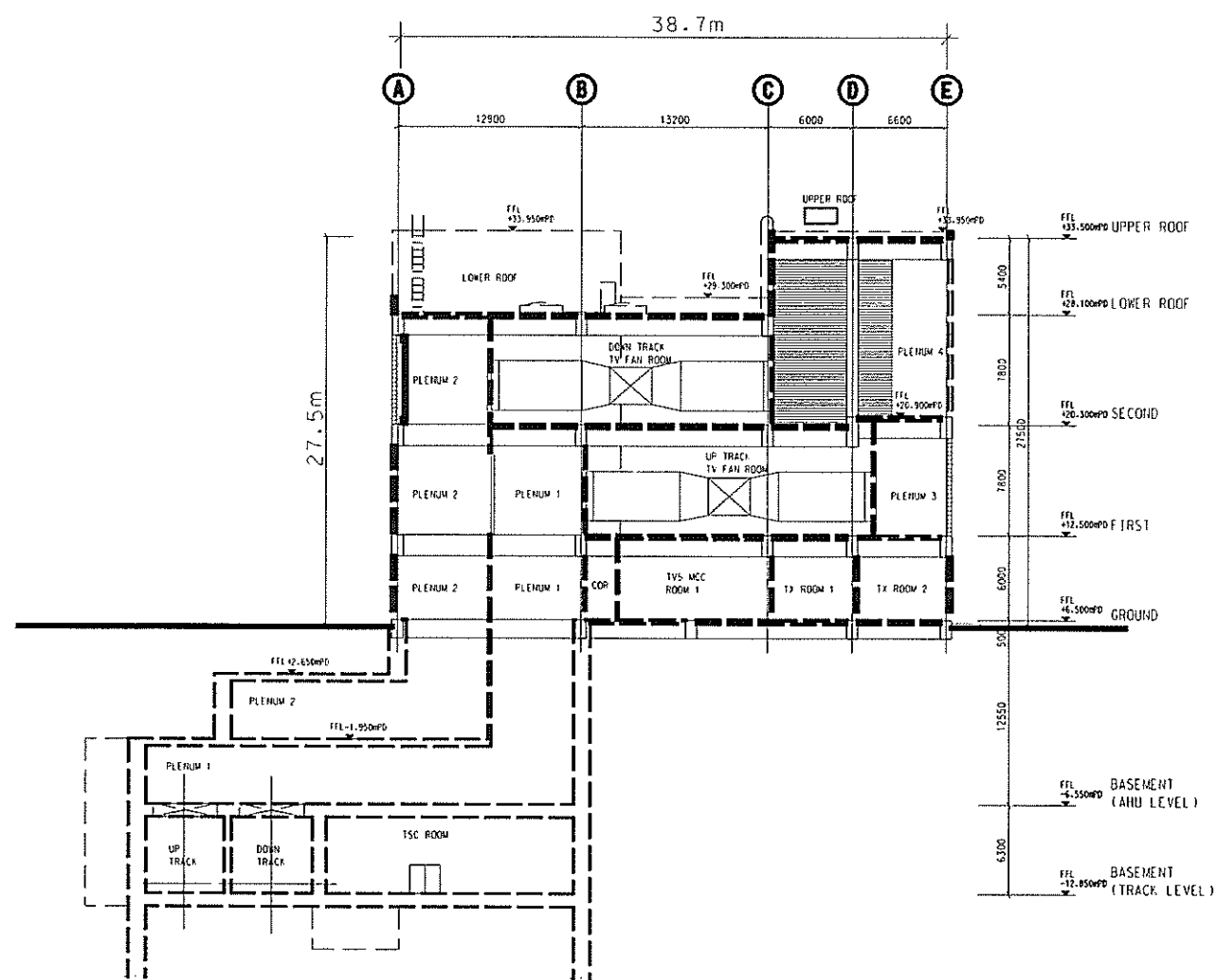
DESIGNED BY	SW
DRAWN BY	JF
CHECKED BY	FC
IN CHARGE	ST
DATE	5 DEC 2003

KCR 九廣鐵路
New Railway Projects
新鐵路策劃
 Ove Arup & Partners Hong Kong Limited
ARUP

KOWLOON SOUTHERN LINK KSL GSA-5100
EIA & ASSOCIATED SERVICES
INTERFACE TUNNEL SECTION
NEAR NAM CHEONG

CADD FILENAME: CADD DATE: 5 DEC 2003
 SCALE: 1:2000 @ A3
 DRAWING NUMBER: **FIGURE 4-3**
 SHEET NO: P
 STAGE CODE: REV: E

FILENAME: G:\env\proj\act\233513\drawings\3rd EIA-V8\Figure\Figure4-4.dgn
Maps reproduced with permission of The Director of Lends. (C) Hong Kong Government.



REV	DATE	BY	SUB	APP	DESCRIPTION
△					
△					
△					
△					
△					

REV	DATE	BY	SUB	APP	DESCRIPTION
△	DEC2003	SW	FC	ST	EIA REPORT
△	NOV2003	SW	FC	ST	EIA REPORT
△	JUNE2003	SW	FC	ST	EIA REPORT
△	7MAR2003	SW	FC	ST	EIA REPORT (2ND DRAFT)
△	11OCT2002	SW	FC	ST	EIA REPORT (1ST DRAFT)

DESIGNED BY	SW
DRAWN BY	JF
CHECKED BY	FC
IN CHARGE	ST
DATE	5 DEC 2003

KCR **New Railway Projects**
新鐵路策劃

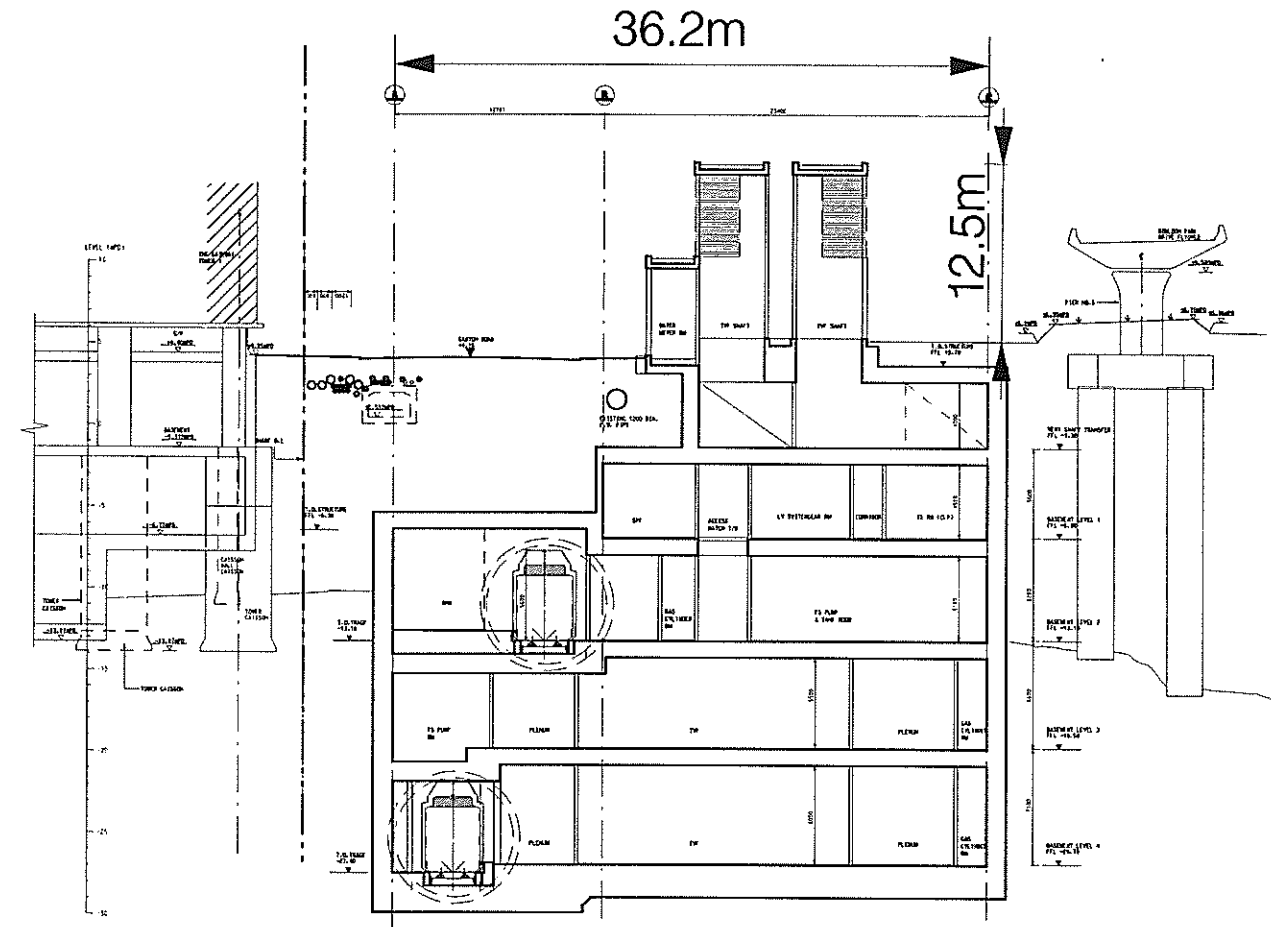
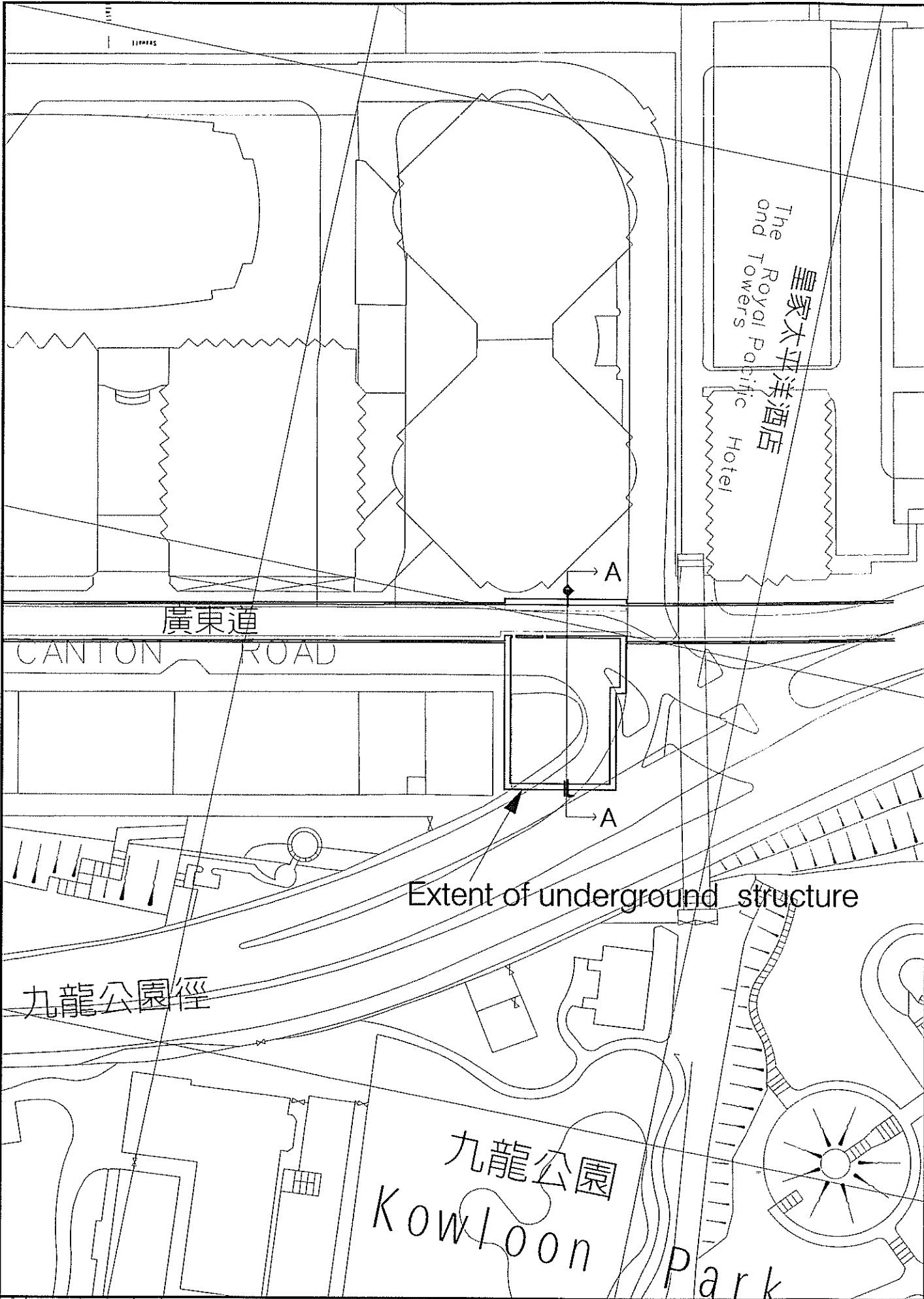
Ove Arup & Partners Hong Kong Limited **ARUP**

KOWLOON SOUTHERN LINK KSL GSA-5100
EIA & ASSOCIATED SERVICES

YMT VENTILATION BUILDING

CADD FRENAME	CADD DATE
SCALE	1:2000 @ A3
DRAWING NUMBER	FIGURE 4-4
SHEET NO	STAGE CODE / REV
	P E

Maps reproduced with permission of The Director of Lands, (C) Hong Kong Government.



Section A-A

REV	DATE	BY	SUB	APP	DESCRIPTION
▲					
▲					
▲					
▲					
▲					
▲					
▲					

REV	DATE	BY	SUB	APP	DESCRIPTION
▲					
▲	DEC2003	SW	FC	ST	EIA REPORT
▲	NOV2003	SW	FC	ST	EIA REPORT
▲	JUNE2003	SW	FC	ST	EIA REPORT
▲	7MAR2003	SW	FC	ST	EIA REPORT (2ND DRAFT)
▲	11OCT2002	SW	FC	ST	EIA REPORT (1ST DRAFT)

DESIGNED BY	SW
DRAWN BY	JF
CHECKED BY	FC
IN CHARGE	ST
DATE	5 DEC 2003

New Railway Projects
新鐵路策劃
 Ove Arup & Partners Hong Kong Limited **ARUP**

KOWLOON SOUTHERN LINK KSL GSA-5100
EIA & ASSOCIATED SERVICES
CANTON ROAD PLANT BUILDING

CADD FILENAME	CADD DATE
	5 DEC 2003
SCALE	1:1000 @ A3
DRAWING NUMBER	FIGURE 4-5
SHEET NO	STAGE CODE REV
	P E

Maps reproduced with permission of The Director of Lands. (C) Hong Kong Government.

FILENAME: G:\env\p\p\lect\23573\drawings\3-d\EA-V8\Figure4\Figure4-B.dgn



七中心

REV	DATE	BY	SUB	APP	DESCRIPTION
△	DEC2003	SW	FC	ST	EIA REPORT
△	NOV2003	SW	FC	ST	EIA REPORT
△	JUNE2003	SW	FC	ST	EIA REPORT
△	7MAR2003	SW	FC	ST	EIA REPORT (2ND DRAFT)
△	11OCT2002	SW	FC	ST	EIA REPORT (1ST DRAFT)

DESIGNED BY	SW
DRAWN BY	JF
CHECKED BY	FC
IN CHARGE	ST
DATE	5 DEC 2003



New Railway Projects
新鐵路策劃

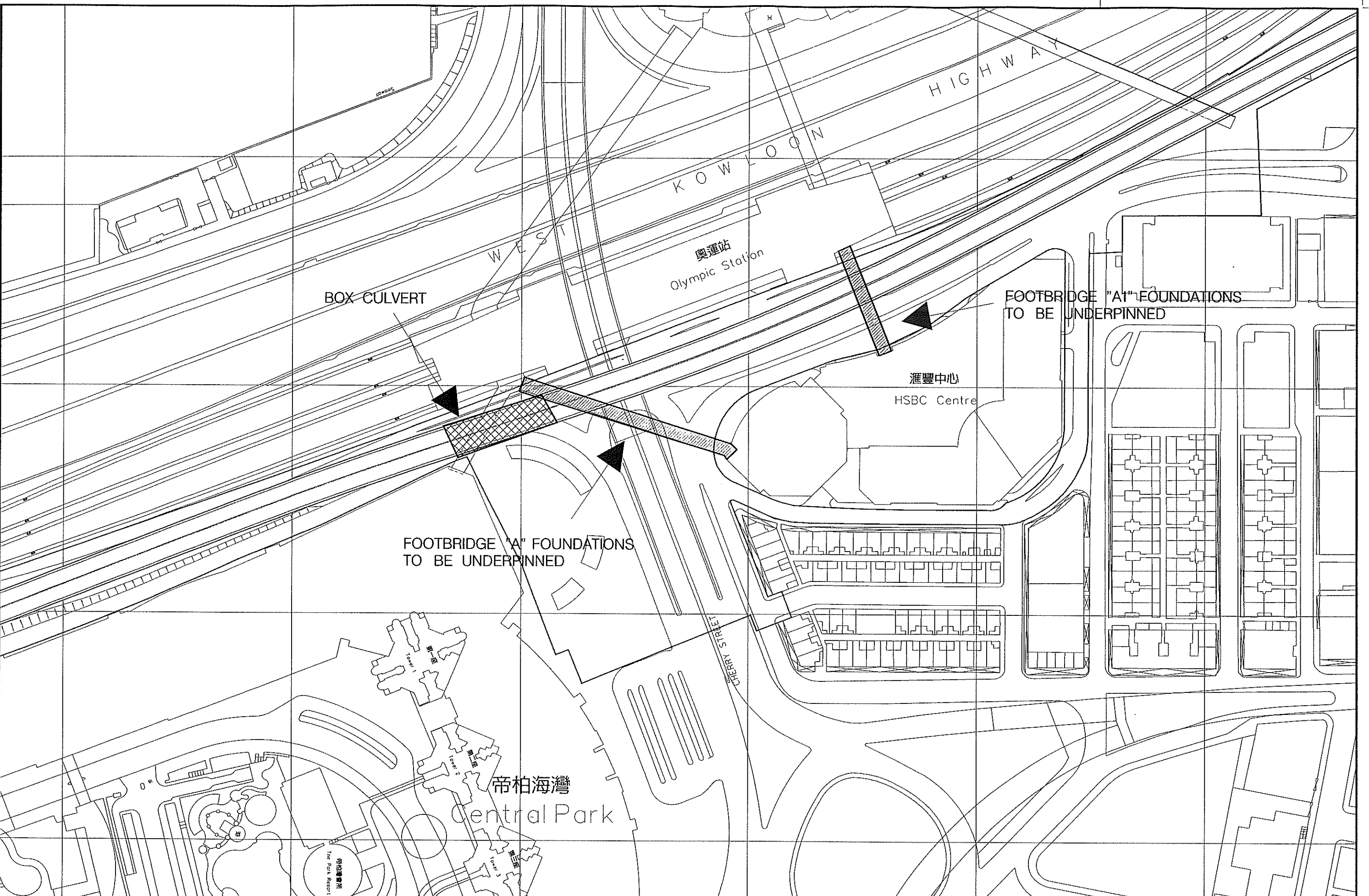
Ove Arup & Partners Hong Kong Limited **ARUP**

KOWLOON SOUTHERN LINK KSL GSA-5100
EIA & ASSOCIATED SERVICES

EMERGENCY EGRESS POINT

CADD FILENAME	CADD DATE
SCALE	1 : 1000 @ A3
DRAWING NUMBER	FIGURE 4-8
SHEET NO	STAGE CODE REV
	P E

Map reproduced with permission of The Director of Lands. (C) Hong Kong Government.
 FILENAME: G:\env\project\23573\drawings\3-rd EIA-V8\Figure\Figure4-10.dgn



REV	DATE	BY	SUB	APP	DESCRIPTION
△	DEC2003	SW	FC	ST	EIA REPORT
△	NOV2003	SW	FC	ST	EIA REPORT
△	JUNE2003	SW	FC	ST	EIA REPORT
△	7MAR2003	SW	FC	ST	EIA REPORT (2ND DRAFT)
△	11OCT2002	SW	FC	ST	EIA REPORT (1ST DRAFT)

DESIGNED BY	SW
DRAWN BY	JF
CHECKED BY	FC
IN CHARGE	ST
DATE	5 DEC 2003

KCR New Railway Projects
 新鐵路策劃

Ove Arup & Partners Hong Kong Limited **ARUP**

KOWLOON SOUTHERN LINK KSL GSA-5100
 EIA & ASSOCIATED SERVICES

LOCATIONS OF FOOTBRIDGE "A" AND "A1"

CAUD FILENAME	KADD DATE
SCALE	5 DEC 2003
DRAWING NUMBER	1 : 1500 @ A3
FIGURE 4-10	
SHEET NO	STAGE CODE REV
	P E