


LEGEND :

•SHWAB REPRESENTATIVE AIR SENSITIVE RECEIVER

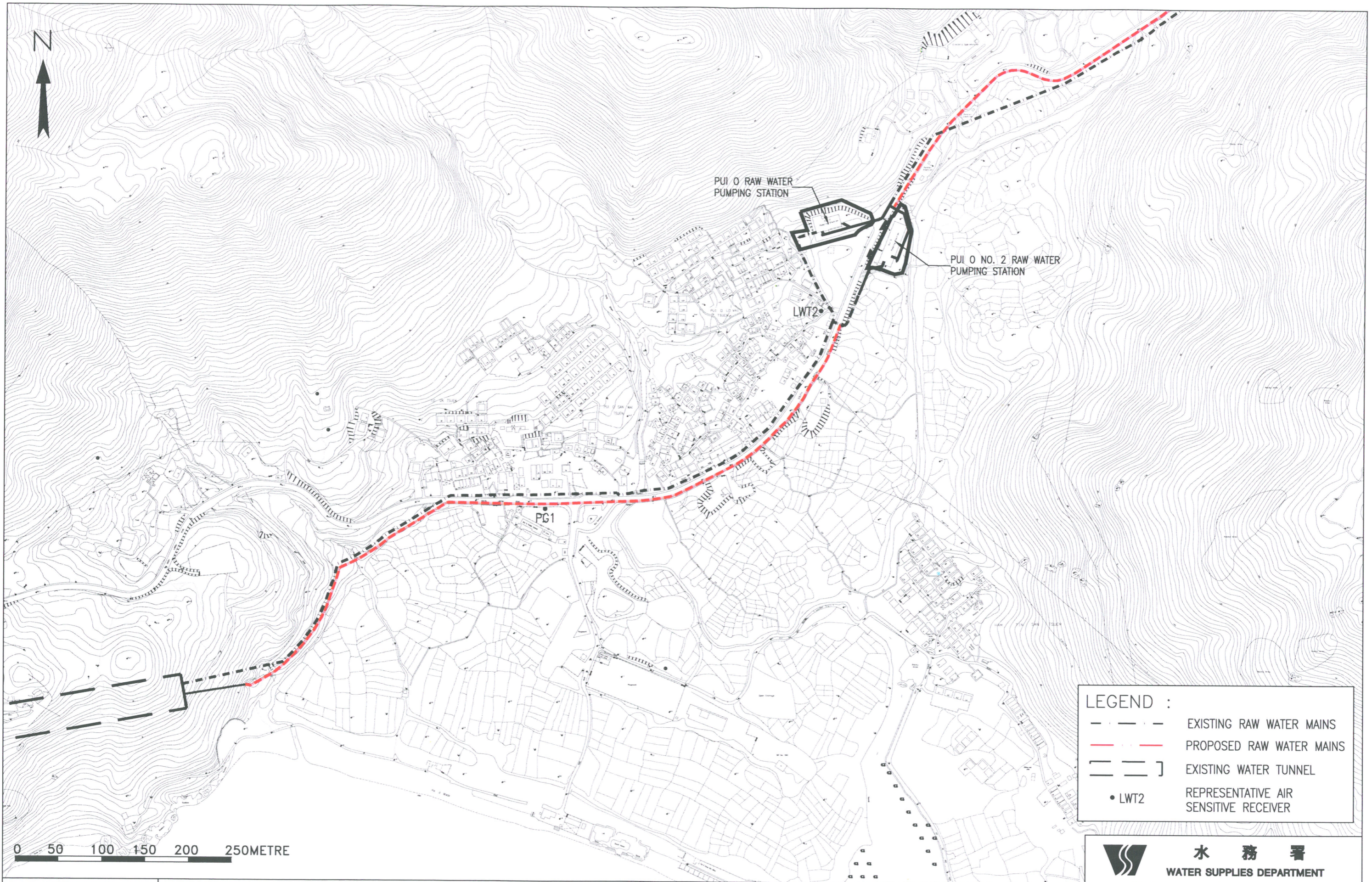
|   |          |             |          |
|---|----------|-------------|----------|
|  <b>水務署</b><br>WATER SUPPLIES DEPARTMENT |          |             |          |
| SCALE   | As Shown | DATE        | AUG 2004 |
| CHECK   | —        | DRAWN       | AKYL     |
| JOB No.   | 71503    | DRAWING No. | 2.1a     |
|   |          | REV         | —        |

**M&E**  
Metcalf & Eddy Ltd  
茂迪工程顧問有限公司

Agreement No. CE 75/2002 (WS)  
Extension of Siu Ho Wan Water Treatment Works - Investigation

## LOCATION OF AIR QUALITY MONITORING STATIONS (SHEET 1 OF 2)





**LEGEND :**

|  |                                       |
|--|---------------------------------------|
|  | EXISTING RAW WATER MAINS              |
|  | PROPOSED RAW WATER MAINS              |
|  | EXISTING WATER TUNNEL                 |
|  | REPRESENTATIVE AIR SENSITIVE RECEIVER |

|   |          |             |          |
|---|----------|-------------|----------|
| <b>水務署</b><br>WATER SUPPLIES DEPARTMENT |          |             |          |
| SCALE                                   | As Shown | DATE        | AUG 2004 |
| CHECK                                   | —        | DRAWN       | AKYL     |
| JOB No.                                 | 71503    | DRAWING No. | 2.1b     |
|   |          | REV         | —        |

**M&E**  
Metcalf & Eddy Ltd  
茂迪工程顧問有限公司

Agreement No. CE 75/2002 (WS)  
Extension of Siu Ho Wan Water Treatment Works – Investigation  
**LOCATIONS OF AIR QUALITY MONITORING STATIONS (SHEET 2 OF 2)**