

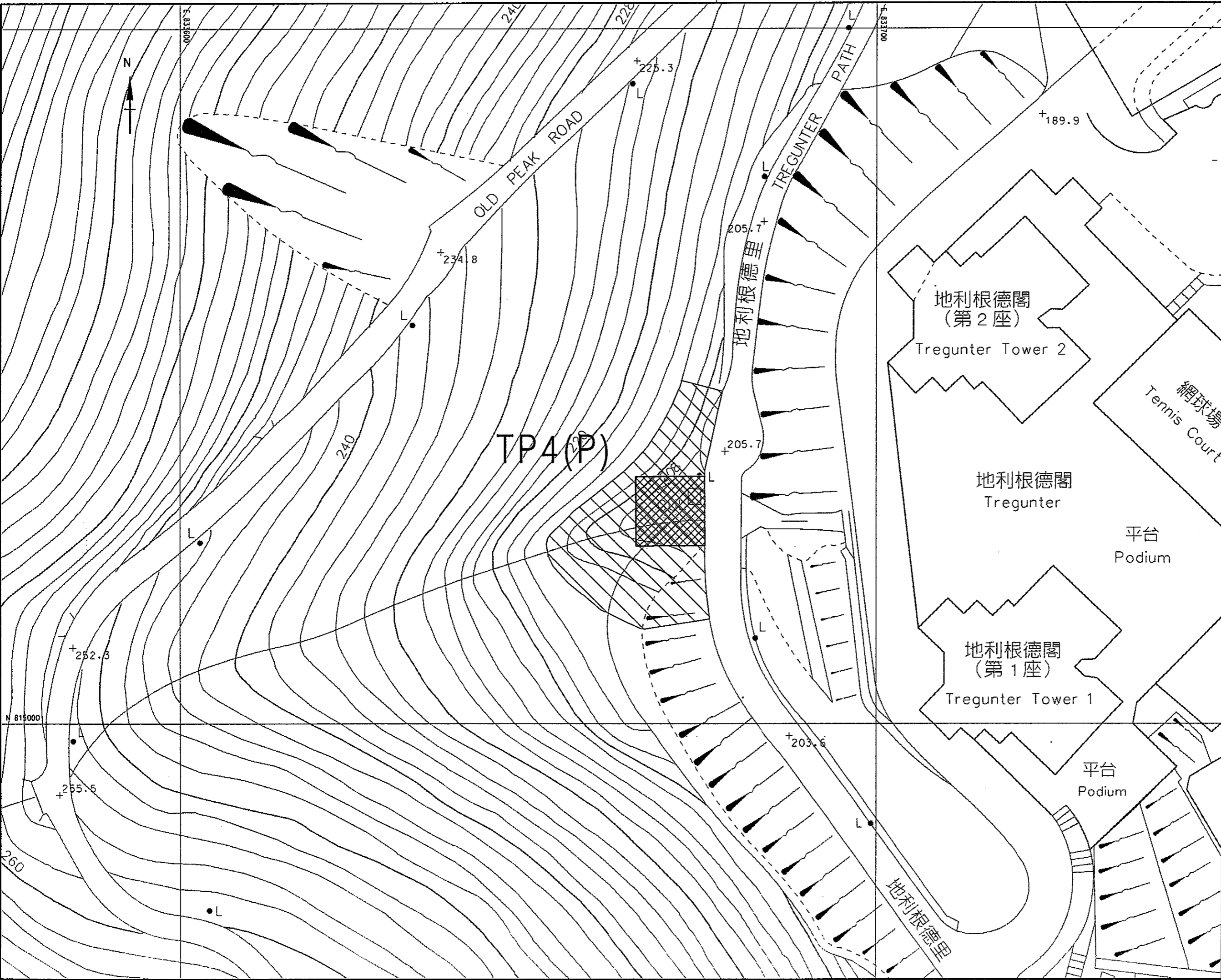


LEGEND :

-  TEMPORARY WORKS AREA
-  PERMANENT ALIENATION OF LAND FOR SHAFT CHAMBER



Revision	Date	Description			Initial
		Designed	Checked	Drawn	
Initial	TY	DCA	SZ	STL	
Date	01/04	01/04	01/04	01/04	

Approved

Agreement no. CE 25/2002 (DS)

Contract title
DRAINAGE IMPROVEMENT IN
NORTHERN HONG KONG ISLAND -
HONG KONG WEST
DRAINAGE TUNNEL AND LOWER CATCHMENT
IMPROVEMENT - INVESTIGATION

Drawing title
LAND REQUIREMENT PLAN-
SHAFT TP4(P)
(SHEET 24 OF 35)

Drawing no.	Scale
FIGURE 2.3-24	1:500 (A3)

 香港特別行政區政府渠務署
THE GOVERNMENT OF THE
HONG KONG
SPECIAL ADMINISTRATIVE REGION
DRAINAGE SERVICES DEPARTMENT

 BLACK & VEATCH HONG KONG LIMITED
博威工程顧問有限公司

Plot Date : 06 APR 2005