


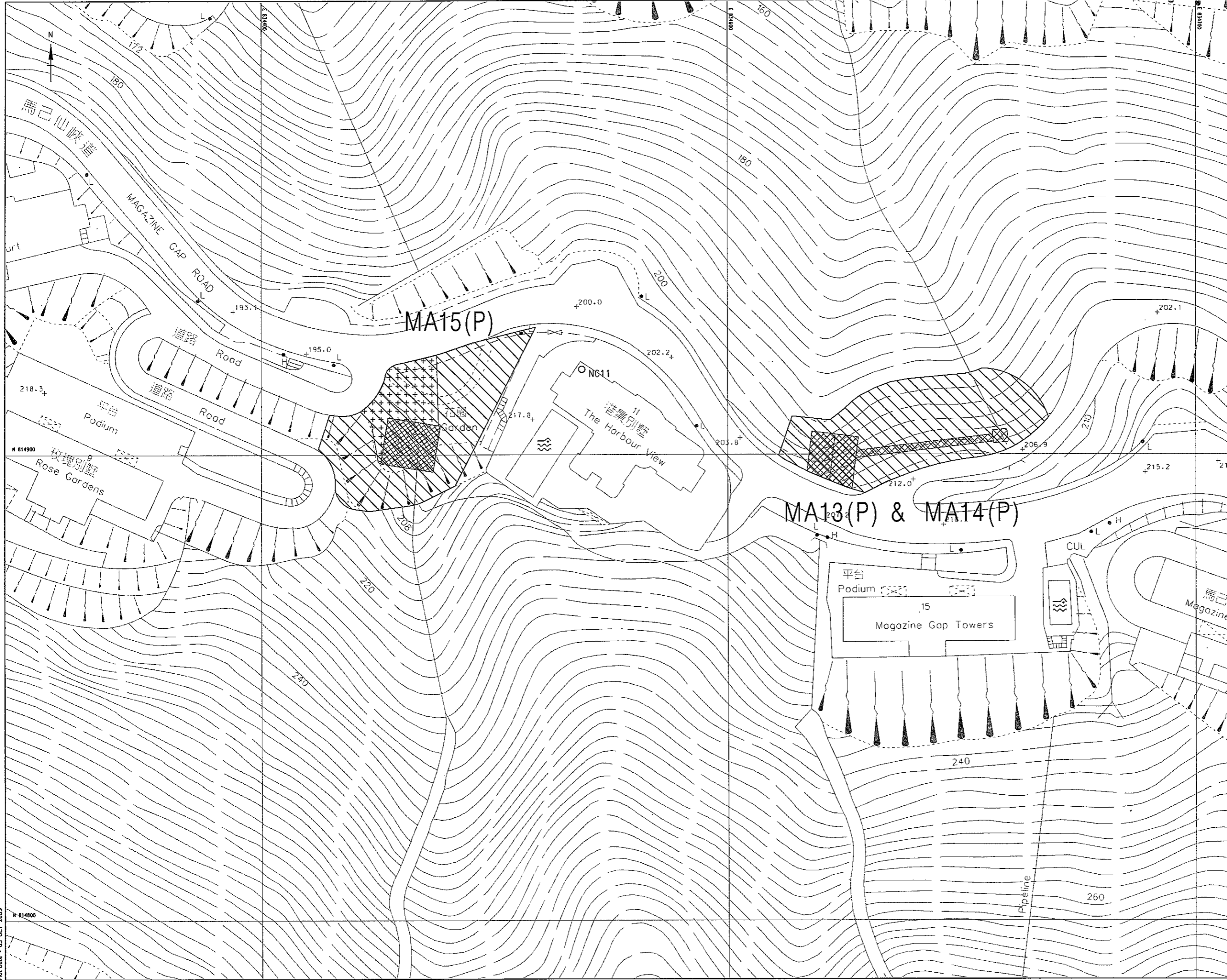


- LEGEND :
-  TEMPORARY WORKS AREA
  -  PERMANENT ALIENATION OF LAND FOR BAFFLED CHANNEL & CONNECTION CHANNEL
  -  AIR BORNE NOISE MONITORING STATION



Revision	Date	Description			Initial
		Designed	Checked	Drawn	
Initial	ET	STL	MTD	STL	
Date	05/04	05/04	05/04	05/04	05/04

Approved

Agreement no. CE 25/2002 (DS)

Contract title  
DRAINAGE IMPROVEMENT IN NORTHERN HONG KONG ISLAND - HONG KONG WEST DRAINAGE TUNNEL AND LOWER CATCHMENT IMPROVEMENT - INVESTIGATION

Drawing title  
LOCATIONS OF MONITORING STATIONS AROUND INTAKE MA13(P), MA14(P) AND MA15(P)

Drawing no. FIGURE 3.5 (382403/EM&A/008)	Scale 1:750
--	----------------

 香港特別行政區政府渠務署  
THE GOVERNMENT OF THE HONG KONG SPECIAL ADMINISTRATIVE REGION  
DRAINAGE SERVICES DEPARTMENT

 BLACK & VEATCH HONG KONG LIMITED  
博威工程顧問有限公司