



© Copyright by Black & Veatch Hong Kong Limited and Government of HKSAR
LEGEND
 ——— CATCHMENT BOUNDARY
 ——— MA ON KONG CHANNEL (K11131)
 [Symbol] TAI LAM COUNTRY PARK BOUNDARY

Revision	Date	Description	Checked	Drawn	Initial
Initial	09/05	MC	KIL	YLL	KIL
Date	09/05	09/05	09/05	09/05	09/05

Approved

AGREEMENT NO. CE 67/98

Contract title
 YUEN LONG, KAM TIN,
 NGAU TAM MEI AND TIN SHUI WAI
 DRAINAGE IMPROVEMENT STAGE 1,
 PHASE 2B - KAM TIN

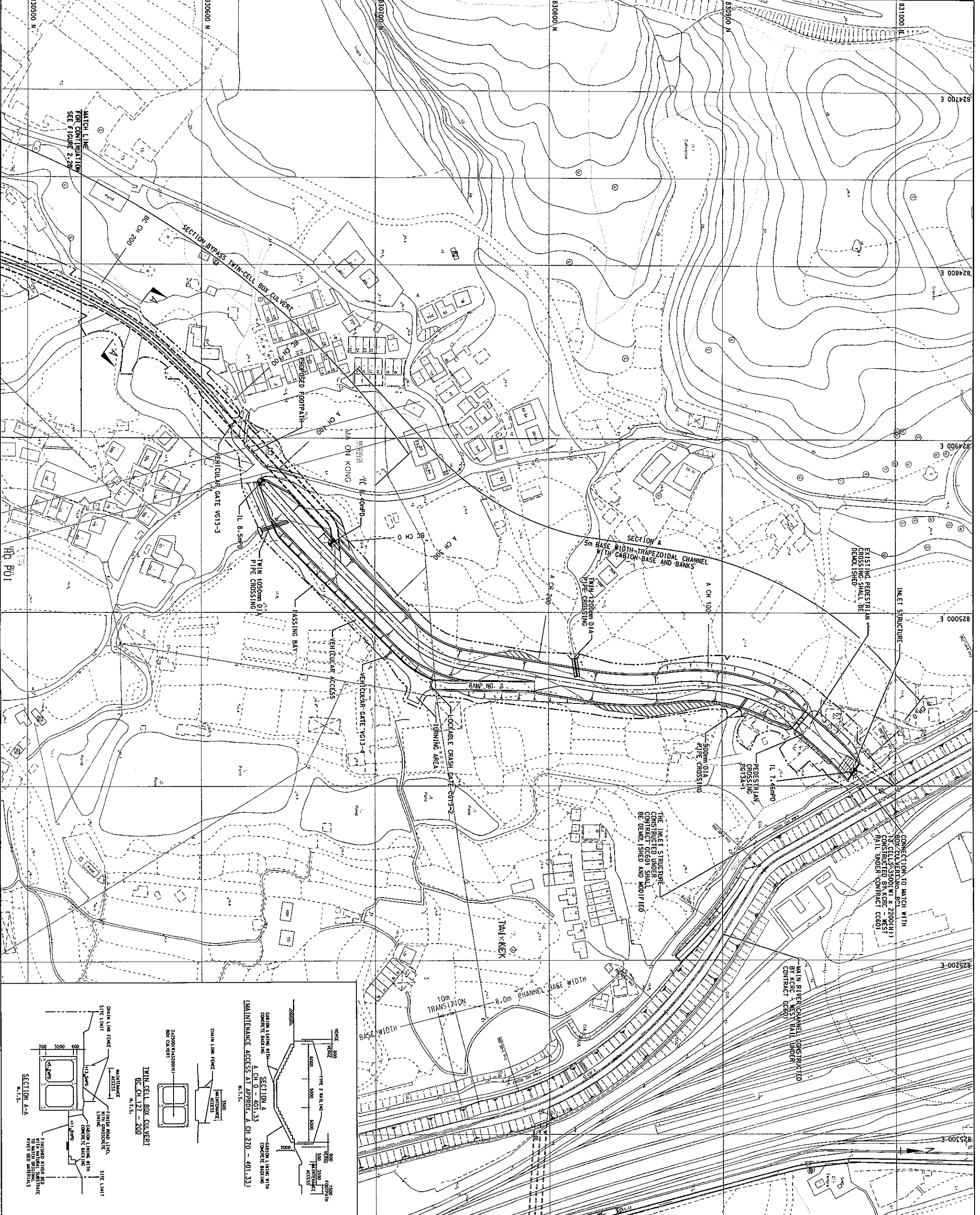
Drawing title
 K13 AND ITS RELATION WITH
 CATCHMENTS IN
 NORTHWEST NEW TERRITORIES

Drawing no. **FIGURE K1**

Scale
 1:25000 A1
 1:50000 A3

香港特別行政區政府渠務署
 THE GOVERNMENT OF THE
 HONG KONG SPECIAL ADMINISTRATIVE REGION
 DRAINAGE SERVICES DEPARTMENT

BLACK & VEATCH HONG KONG LIMITED
 黑山工程顧問有限公司



© Copyright by Black & Veatch Hong Kong Limited and Government of HKSAR.

NOTES :

1. ALL DIMENSIONS ARE IN MILLIMETRES UNLESS STATED OTHERWISE.
2. GRID LINES ARE HONG KONG METRIC GRID 1980.
3. TYPE 2 RAILING WITH DEBRIS TRAP BAR AND OTHERS SHALL BE PROVIDED AT BOTH SIDES OF THE CHANNEL BANKS

LEGEND :

- SITE BOUNDARY
- PROPOSED CHANNEL
- PROPOSED SLOPE
- ▨ AREA TO BE FILLED TO ADJACENT GROUND LEVEL
- I.L. INVERT LEVEL

Revision	Date	Description	Initial
C	03/06	AMENDMENT TO BY-PASS CULVERT	KIL
B	10/05	MINOR AMENDMENT TO CHANNEL LAYOUT	KIL
A	05/05	MINOR AMENDMENTS TO SITE BOUNDARY	KIL

Design	Checked	Drawn	Verified
Initial	TW	KIL	MK
Date	04/04	04/04	04/04

Approved

AGREEMENT NO. CE 67/98

Contract title

YUEN LONG, KAM TIN, NGAU TAM, MEI AND TIN SHUI WAI DRAINAGE IMPROVEMENT, STAGE 1, PHASE 2B - KAM TIN

Drawing title

MA ON KONG CHANNEL KTS3 PROPOSED LAYOUT PLAN

(SHEET 1 OF 2)

Drawing no.

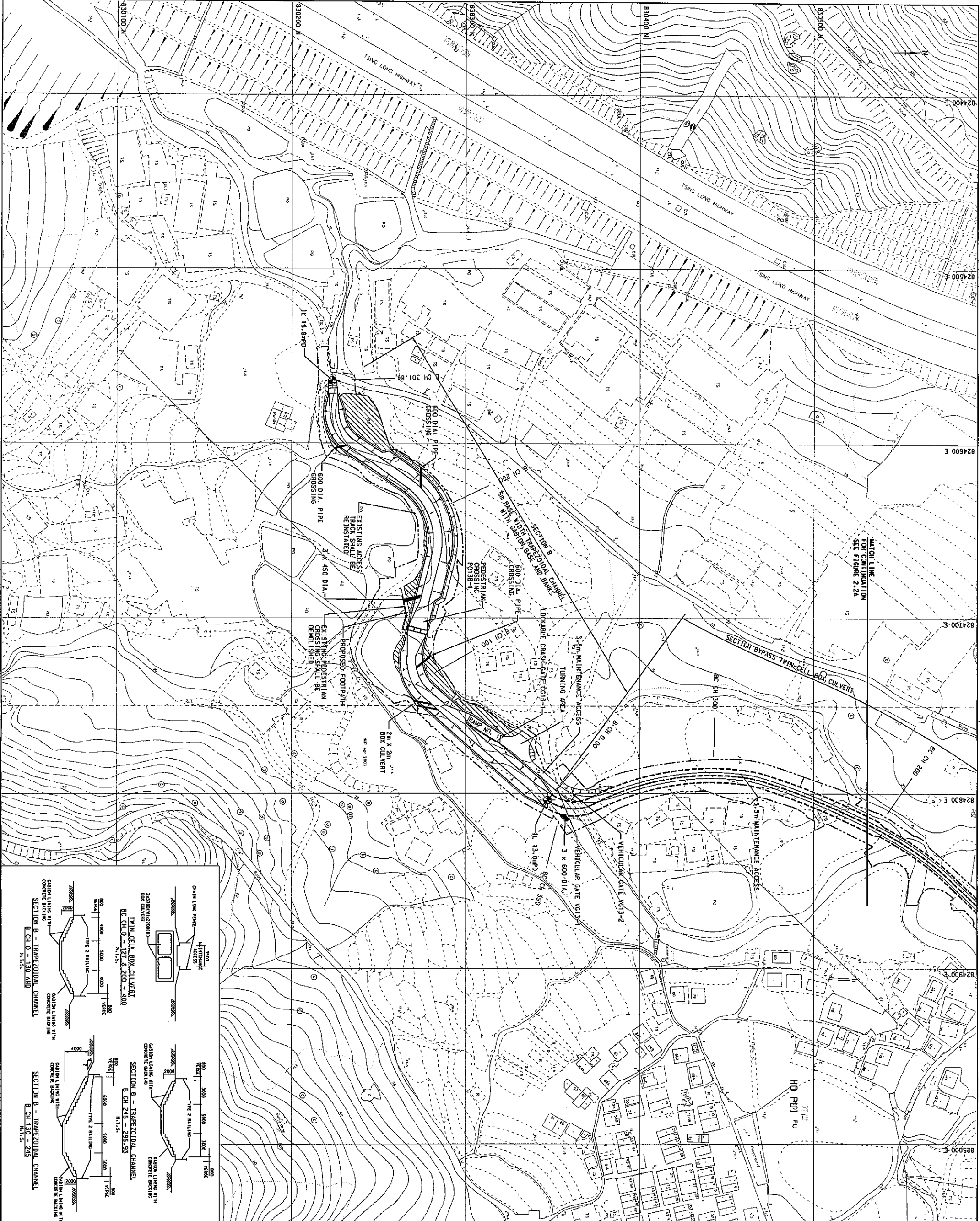
FIGURE K2a

Scale

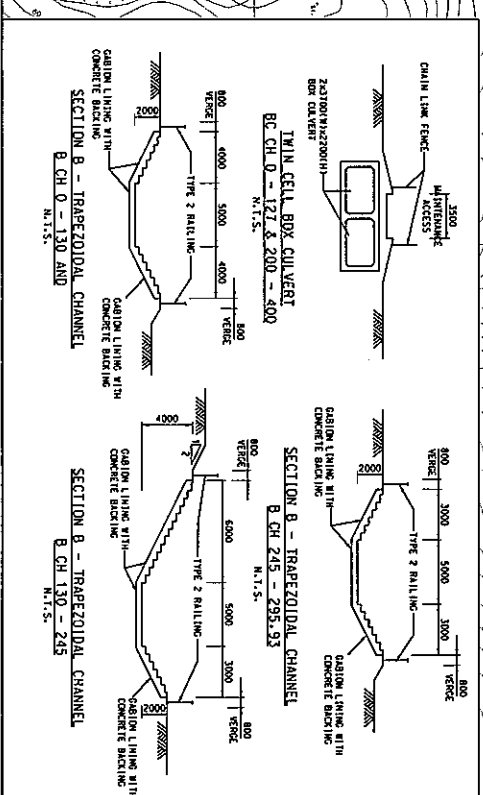
1:1,000 A1
1:2,000 A3

香港特別行政區政府渠務署
THE GOVERNMENT OF THE SPECIAL ADMINISTRATIVE REGION
DRAINAGE SERVICES DEPARTMENT

BLACK & VEATCH HONG KONG LIMITED
博達工程顧問有限公司



MATCH LINE
FOR CONTINUATION
SEE FIGURE 2.2A



- LEGEND :
- SITE BOUNDARY
 - PROPOSED CHANNEL
 - PROPOSED SLOPE
 - AREA TO BE FILLED TO ADJACENT GROUND LEVEL
 - I.L. INVERT LEVEL
 - PROPOSED RETAINING WALL
- NOTES :
1. ALL DIMENSIONS ARE IN METRES UNLESS STATED OTHERWISE.
 2. GRID LINES ARE HONG KONG METRIC GRID 1980.
 3. TYPE 2 RAILING WITH DEBRIS TRAP BAR AND GENERAL MESH FILL SHALL BE PROVIDED AT BOTH SIDES OF THE CHANNEL BANKS

Revision	Date	Description	Initial	Verified
A	05/05	REVISIONS TO SITE BOUNDARY	KIL	KIL
B	10/05	REVISIONS TO CHANNEL ALIGNMENT	KIL	KIL
C	03/06	REVISIONS TO BOX CULVERT	KIL	KIL

Date	Checked	Dr-own	Verified
04/04	KIL	BR	KIL
04/04	KIL	BR	KIL
04/04	KIL	BR	KIL

AGREEMENT NO. CE 67/98

Contract title
YUEN LONG, KAM TIN, NGAU TAM MEI AND TIN SHUI WAI DRAINAGE IMPROVEMENT STAGE 1, PHASE 2B - KAM TIN

Drawing title
MA ON KONG CHANNEL K13 PROPOSED LAYOUT PLAN (SHEET 2 OF 2)

Drawing no. FIGURE K2B

Scale 1:1000 A1
1:2000 A3

香港特別行政區政府渠務署
THE GOVERNMENT OF THE HONG KONG SPECIAL ADMINISTRATIVE REGION
DRAINAGE SERVICES DEPARTMENT

BLACK & VEATCH HONG KONG LIMITED
博達工程顧問有限公司