

1 Introduction

1.1 Background

- 1.1.1 Hyder was commissioned by Yiu Lian Dockyards Ltd (Yiu Lian), to carry out an environmental impact assessment for relocating Yiu Lian Floating Dock No. 3 (the Dock) from Yam O Wan to the southwest coast of Tsing Yi. Figure 1-1 shows the existing location and the proposed new location.
- 1.1.2 A Project Profile (No. PP-239/2005) was submitted to the Environmental Protection Department (EPD) on 24 January 2005 for applying an Environmental Impact Assessment Study Brief under Section 5(1) of the Environmental Impact Assessment Ordinance. An EIA Study Brief (ESB-124/2005) was issued by the Director of Environmental Protection on 8 March 2005.
- 1.1.3 The Dock has been in operation at Yam O Wan since 1989 with the written permission of the Director of the Marine Department.
- 1.1.4 In 1998, the Government changed the land use proposal of North-East Lantau Port from the Lantau Port concept to the basis of the tourism and recreation theme. The re-orientation of the planning rendered Yiu Lian's facilities incompatible with the overall planning context, as the retention of the Dock at Yam O would not fit into the rezoning plan of the area and would constitute interface issues, particularly environmental and visual impacts.
- 1.1.5 Based on a decision reached at the Committee on Planning and Land Development on 21 December 1999, a revised program associated with the reclamation and proposed developments at Yam O was formulated so as to allow a continuing operation of the Yiu Lian facilities until the expiry of the existing lease term in 2008 in order to minimise any impact upon the facilities. Policy support was secured regarding the possible re-provisioning to the facilities as it had already been identified as being essential in nature for supporting port activities.
- 1.1.6 In January 2003, the project proponent notified the Marine Department of the relocation of the Dock from the existing Yam O Wan site to the southwest coast of Tsing Yi Island. The project proponent was subsequently informed that the Marine Department had no objection in principle to the relocation of the Dock to the proposed Tsing Yi site.
- 1.1.7 From April to August 2003, the project proponent notified the Economic Department and Labour Bureau, the Agriculture, Fisheries and Conservation Department, the Town Planning Board, the Planning Department, the Lands Department, and the Antiquities and Monuments Office, of the relocation of the Dock from the existing site to the southeast coast of Tsing Yi Island. The project proponent was subsequently informed

that the above mentioned departments have no objection in principle to the relocation of the Dock to the proposed Tsing Yi site.

- 1.1.8 There is an on-going discussion between the Marine Department and Yiu Lian regarding if the mooring structure at the existing site should be removed upon decommissioning of the Dock from the existing site.
- 1.1.9 The purpose of this EIA study is to provide information on the nature and extent of the potential environmental impacts arising from the Project and related activities taking place concurrently. This information will contribute to decisions by the Director of the Environmental Protection Department on:
- (i) the overall acceptability of any adverse environmental consequences that are likely to arise as a result of the Project;
 - (ii) the conditions and requirements for the Project to mitigate against adverse environmental consequences wherever practicable; and
 - (iii) the acceptability of any residual impacts after the proposed mitigation measures are implemented.

1.2 Objectives of This EIA Study

- 1.2.1 The objectives of the EIA study are as follows:
- (i) to describe the Project and associated works together with the requirements for carrying out the Project;
 - (ii) to identify and describe the elements of the community and environment likely to be affected by the Project and/or likely to cause adverse impacts to the Project, including natural and man-made environment and the associated environmental constraints;
 - (iii) to identify potential Tributyltin (TBT) and heavy metal contamination in marine sediments due to operation of the Dock in Lantau and ways to minimise and mitigate the impacts;
 - (iv) to identify and quantify emission sources and determine the significance of impacts on sensitive receivers and potential affected uses including those along the Sham Tseng coast, especially in respect of marine water and sediment quality impacts;
 - (v) to identify mitigation measures for the proposed Dock at Tsing Yi with regard to the risk incidence associated with the Caltex and ExxonMobil West terminals at southwest Tsing Yi;
 - (vi) to propose the provision of mitigation measures so as to minimize pollution, environmental disturbance and nuisance arising from the Project;
 - (vii) to investigate the feasibility, practicability, effectiveness and implications of the proposed mitigation measures;
 - (viii) to identify, predict and evaluate the residual environmental impacts (i.e. after practicable mitigation) and the cumulative effects expected

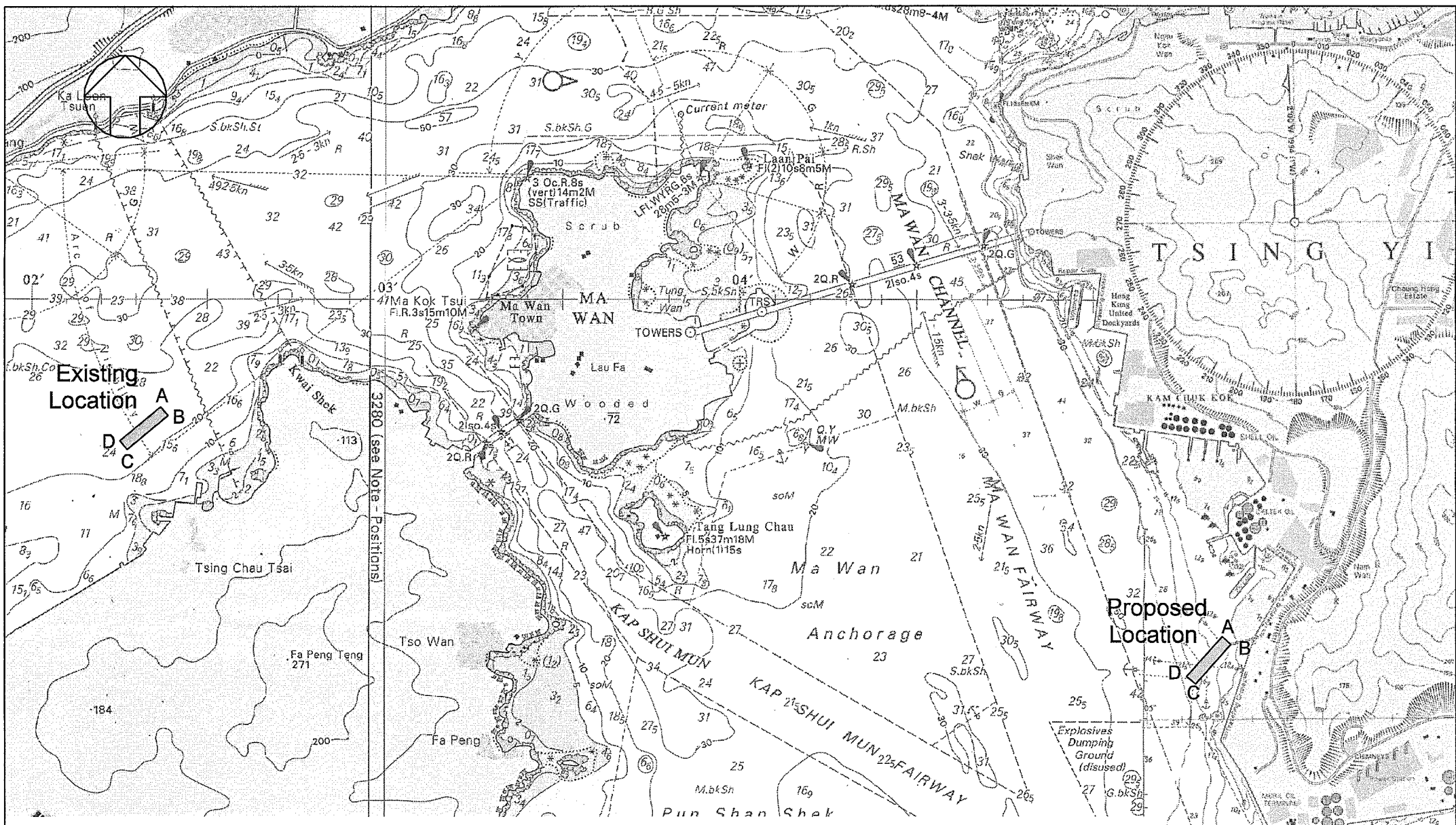
to arise from the Project in relation to the sensitive receivers and potential affected uses;


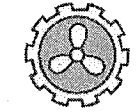
- (ix) to identify, assess and specify methods, measures and standards, to be included in the detailed design, decommissioning, construction and operation stage of the Project which are necessary to mitigate these environmental impacts and reduce them to acceptable levels;
- (x) to investigate the extent of the secondary environmental impacts that may arise from the proposed mitigation measures and to identify constraints associated with the mitigation measures in the EIA study, as well as the provision of any necessary mitigation measures;
- (xi) to identify constraints associated with the mitigation measures recommended in the EIA study; and
- (xii) to design and specify the environmental monitoring and audit requirements to ensure the effective implementation of the environmental protection and pollution control measures.

1.3 The Structure of This EIA Report

1.3.1 Following this introductory section, the reminding sections of this EIA Report are:

- | | |
|-----------|---|
| Section 2 | Project details including the site selection, construction activities, methods, operation regime and work programmes. |
| Section 3 | Baseline conditions of the water quality and assessment of water quality impact |
| Section 4 | Waste management implications |
| Section 5 | Potential air quality impact arising from the operation of the Dock at west of Tsing Yi |
| Section 6 | Hazard assessment for the operational stage at Tsing Yi |
| Section 7 | Potential oil spillage and its impacts during the future Dock operation at Tsing Yi |
| Section 8 | Conclusion and recommendations of the EIA Study Report |
| Section 9 | Implementation Schedules of recommended mitigation measures for various environmental issues |



<p>CONSULTANT</p>  <p>Hyder Consulting</p>	<p>CLIENT</p>  <p>友聯船廠有限公司 Yiu Lian Dockyards Limited</p>
---	--

<p>DRAWING TITLE</p> <h2 style="text-align: center;">Relocation of Yiu Lián Floating Dock No. 3</h2> <h3 style="text-align: center;">The Location of the Existing Floating Dock and Proposed New Site</h3>
--

DESIGNED	S. OR	CHECKED	G. Y. LI	
DRAWN	T. KWAN	CHECKED	S. OR	
APPROVED	G. Y. LI	© Copyright Reserved All dimensions are in mm unless shown otherwise. No measurement should be taken from drawing directly.		
DATE	12-10-2005			
SCALE	1 : 25000			
DRG. NO.	Figure 1-1		REV.	-