

Yiu Lian Dockyards Limited

# Relocation of Yiu Lian Floating Dock No. 3

---

## Environmental Impact Assessment Report

October 2006

Report no: 01167R0033



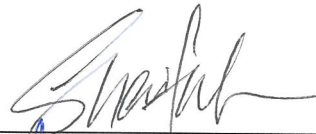
Yiu Lian Dockyards Limited

# Relocation of Yiu Lian Floating Dock No. 3

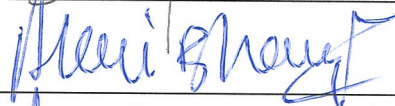
---

## Environmental Impact Assessment Report

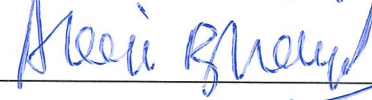
Author: Sharifah Or



Checker: Alexi Bhanja



Approver: Dr. Guiyi Li



Report no: 00167R0033

Date: October 2006

This report has been prepared for Yiu Lian Dockyards Limited in accordance with the terms and conditions of appointment for Environmental Impact Assessment Report dated 27 September 2004. Hyder Consulting Ltd (Incorporated in Hong Kong with limited liability—COI Number 126012) cannot accept any responsibility for any use of or reliance on the contents of this report by any third party.

Hyder Consulting Ltd

Incorporated in Hong Kong with limited liability—COI Number 126012

47th Floor, Hopewell Centre, 183 Queens Road East, Wanchai, Hong Kong

Tel: +852 2911 2233 Fax: +852 2805 5028 www.hyderconsulting.com



# Contents

<b>1</b>	<b>Introduction.....</b>	<b>1-1</b>
1.1	Background .....	1-1
1.2	Objectives of This EIA Study .....	1-2
1.3	The Structure of This EIA Report .....	1-3
<b>2</b>	<b>Project Information.....</b>	<b>2-1</b>
2.1	Description of the Project .....	2-1
2.2	The Scope of the Project.....	2-2
2.3	Dock Operation .....	2-3
2.4	Consideration of Alternative Options and Methods for the Project.....	2-5
2.5	Construction Programme .....	2-6
2.6	Interfacing with Other Projects .....	2-6
<b>3.</b>	<b>Water Quality Impact Assessment.....</b>	<b>3-1</b>
3.1	Introduction.....	3-1
3.2	Environmental Legislation, Standards and Guidelines.....	3-2
3.3	Description of Environment .....	3-9
3.4	Water Sensitive Receivers .....	3-11
3.5	Baseline Environmental Conditions.....	3-12
3.6	Assessment Methodology .....	3-39
3.7	Impact Evaluation.....	3-44
3.8	Mitigation Measures .....	3-67
3.9	Residual Impacts.....	3-68
3.10	Environmental Monitoring and Audit Requirements.....	3-69
3.11	Conclusions.....	3-70
<b>4</b>	<b>Waste Management .....</b>	<b>4-1</b>
4.1	Introduction.....	4-1
4.2	Environmental Legislation, Standards and Guidelines.....	4-1
4.3	Assessment Methodology .....	4-4
4.4	Baseline Condition of Marine Sediment .....	4-5
4.5	Impact Evaluation.....	4-10
4.6	Mitigation Measures .....	4-12
4.7	Residual Impacts.....	4-13
4.8	Environmental Monitoring and Audit Requirements.....	4-13
4.9	Conclusions.....	4-13
<b>5</b>	<b>Air Quality Impact Assessment During Operation at Tsing Yi .....</b>	<b>5-1</b>
5.1	Introduction.....	5-1

5.2	Environmental Legislation, Policies, Plans, Standards and Criteria.....	5-1
5.3	Description of Environment .....	5-3
5.4	Assessment Methodology .....	5-4
5.5	Impact Evaluation.....	5-7
5.6	Mitigation Measures .....	5-9
5.7	Residual Impacts.....	5-9
5.8	Environmental Monitoring and Audit Requirements.....	5-9
5.9	Conclusion.....	5-9
<b>6</b>	<b>Hazard Assessment For the Dock at Tsing Yi.....</b>	<b>6-1</b>
6.1	Introduction.....	6-1
6.2	Description of Relocation Project .....	6-2
6.3	Assessment of Risk Incidents .....	6-9
6.4	Identification of Mitigation Measures.....	6-13
6.5	Conclusions and Recommendations.....	6-15
<b>7</b>	<b>Potential Oil Spillage during the Operation Stage at Tsing Yi.....</b>	<b>7-1</b>
7.1	Introduction.....	7-1
7.2	Environmental Legislation and Standards.....	7-1
7.3	Sensitive Receivers.....	7-1
7.4	Oil Spillage Sources .....	7-1
7.5	Historical Spillage Incidents .....	7-1
7.6	Oil Pollution Contingency Procedure .....	7-3
7.7	Potential Impact of Oil Spillage .....	7-3
7.8	Cumulative Impacts.....	7-4
7.9	Mitigation Measures .....	7-4
7.10	Residual Impacts.....	7-5
7.11	Conclusions.....	7-5
<b>8</b>	<b>Conclusions and Recommendations.....</b>	<b>8-1</b>
8.1	Water Quality.....	8-1
8.2	Waste Management .....	8-1
8.3	Air Quality.....	8-2
8.4	Hazard Assessment for the Dock at Tsing Yi.....	8-2
8.5	Oil Spillage during the Dock Operation at Tsing Yi .....	8-2
8.6	Environmental Outcome.....	8-2
8.7	Overall Conclusions .....	8-4
<b>9</b>	<b>Implementation Schedule of the Recommended Mitigation Measures .....</b>	<b>9-1</b>

## Tables

Table 2-1	The Co-ordinates of the Proposed New Site	2-1
Table 3-1	Relevant WQOs at the North Western WCZ and the Western Buffer WCZ	3-3
Table 3-2	International Standards for Heavy Metals and Micro-Pollutants in Marine Environment	3-6
Table 3-3	Standards for Heavy Metals and Micro-pollutants Recommended for this EIA	3-6
Table 3-4	Standards for Effluents Discharged into the Marine Waters of Southern, Mirs Bay, Junk Bay, North Western, Eastern Buffer and Western Buffer Water Control Zones	3-7
Table 3-5	Discharge Limits Specified in the Discharge Licence for Dock Operations at Yam O Wan	3-8
Table 3-6	Sediment Quality Criteria for the Classification of Sediment	3-9
Table 3-7	Water Sensitive Receivers	3-12
Table 3-8	Requirements of Seawater Sample Analysis	3-14
Table 3-9	Requirements of Sediment Sample Analysis	3-15
Table 3-10	Elutriate Samples	3-16
Table 3-11	Requirements of Elutriate Sample Analysis	3-17
Table 3-12	Sediment Biological Screening Test	3-18
Table 3-13	The Mixture of Composite Sediment Sample for Biological Screening Test for Category M Sediment	3-18
Table 3-14	EPD Marine Water Quality Monitoring Data in Year 2004	3-21
Table 3-15	Marine Water Quality Results at Yam O Wan (Collection Date: 21 May 2005)	3-22
Table 3-16	Marine Water Quality Results at Yam O Wan (Collection Date: 4 June 2005)	3-23
Table 3-17	EPD Sediment Quality Monitoring Data in Years 2000-2004	3-25
Table 3-18	Sediment Quality Results at the Existing Site	3-27
Table 3-19	Number of Sediment Samples with Contaminants exceeding LCEL and UCEL at the Existing Site	3-28
Table 3-20	Sediment Quality Results at the Proposed Site	3-29
Table 3-21	Sediment at the Existing Site - Biological Test Results Summary	3-30
Table 3-22	Bioaccumulation Testing Results for the Existing Site and Available Assessment Criteria	3-32
Table 3-23	Concentration of Copper in Organism Tissue at Test Initiation and Termination	3-33
Table 3-24	Concentration of Zinc in Organism Tissue at Test Initiation and Termination	3-34
Table 3-25	Concentration of Silver in Organism Tissue at Test Initiation and Termination	3-34
Table 3-26	Concentration of Mercury in Organism Tissue at Test Initiation and Termination	3-35
Table 3-27	Bioaccumulation Potential of Selected Contaminant in Sediments Collected from the Existing Site	3-38
Table 3-28	Summary of Particle Size Distribution at the Existing Site	3-45
Table 3-29	Predicted SS Elevation Resulting from Dredging for Retrieval of Anchor Blocks at the Existing Site	3-47
Table 3-30	Summary Results of Elutriate Sample Analysis at the Existing Site	3-49
Table 3-31	Predicted Elevation of Dissolved Copper Level at the Existing Site	3-50
Table 3-32	Summary Results of Particle Size Distribution at the Proposed Site	3-53
Table 3-33	Predicted SS Elevation Resulting from Dredging and Backfilling at the Proposed Site	3-54
Table 3-34	Summary Results of Elutriate Sample Analysis at the Proposed Site	3-56
Table 3-35	Predicted Elevation of Dissolved Copper Level at the Proposed Site	3-56
Table 3-36	Limitations on Discharge of Effluent Arising from Domestic Sewage	3-58
Table 3-37	Domestic Effluent Characteristics	3-58
Table 3-38	Predicted SS Elevation Resulting from Domestic Wastewater Discharge at Tsing Yi Site during the Operation Stage	3-59

Table 3-39	Industrial Effluent Characteristics	3-63
Table 3-40	Model Predictions of Water Quality Impacts Resulting from Industrial Effluent Discharges at Tsing Yi during the Operation State	3-64
Table 3-41	Residual Water Quality Impact at the Existing Site during the Decommissioning Stage	3-68
Table 3-42	Residual Water Quality Impact at Tsing Yi during the Commissioning Stage	3-69
Table 3-43	Residual Water Quality Impact Resulting from the Domestic Wastewater Discharge from the Dock at Tsing Yi during the Operation Stage	3-69
Table 3-44	Residual Water Quality Impact Resulting from the Industrial Wastewater Discharge from the Dock at Tsing Yi during the Operation Stage	3-69
Table 4-1	Chemical Analysis Results of Marine Sediment at Yam O Wan and Reference Sediment	4-7
Table 4-2	The Mixture of Composite Sediment Sample for Biological Screening Test for Category M Sediment	4-8
Table 4-3	Biological Test Results Summary	4-8
Table 4-4	Chemical Analysis Results of Marine Sediment at Tsing Yi	4-10
Table 5-1	Hong Kong Air Quality Objectives	5-2
Table 5-2	Annual Averaged Concentration of SO <sub>2</sub> and NO <sub>2</sub> at Kwai Chung Air Quality Monitoring Station	5-3
Table 5-3	Representative Air Sensitivity Receiver	5-4
Table 5-4	Operation Details of the Generators of Floating Dock No. 3	5-5
Table 5-5	Operation Details of the Generators of Floating Dock No. 1	5-6
Table 5-6	Predicted SO <sub>2</sub> Concentrations at nearby ASRs	5-8
Table 5-7	Predicted NO <sub>2</sub> Concentrations at nearby ASRs	5-8
Table 6-1	Details of Anchoring Work before Relocation	6-5
Table 6-2	Details of Moving of Dock, Positioning and Mooring Work	6-6
Table 6-3	Details of Retrieval & Post-anchoring	6-6
Table 6-4	Temporal Distributions of Floating Dock Staff in Normal Working Days	6-9
Table 6-5	LPG Storage in EMWT and CT	6-10
Table 6-6	LPG Handling Facilities in EMWT and CT	6-10
Table 6-7	Identified LPG Risk Incidents	6-11
Table 6-8	The Closest Distance between the Terminal Facilities and the Dock	6-12
Table 9-1	Mitigation Measures Implementation Schedule	9-5

## Figures

Figure 1-1	The Location of the Existing Floating Dock and Proposed New Site
Figure 2-1	The General Arrangement of the Existing Dock
Figure 2-2	The Locations of Existing Dock and Anchor Blocks
Figure 2-3	The Locations of Proposed Dock Site and Anchor Blocks and nearby Floating Docks
Figure 3-1	Locations of the North Western WCZ and Western Buffer WCZ
Figure 3-2	Depth Average Peak Velocities during a Typical Flood Tide in a Wet Season
Figure 3-3	Depth Average Peak Velocities during a Typical Ebb Tide in a Wet Season
Figure 3-4	The Locations of Major Pollution Sources at the Existing Site
Figure 3-5	The Locations of Major Pollution Sources at the Proposed Site
Figure 3-6	Locations of Adjacent Beaches
Figure 3-7	Locations of Adjacent Fish Culture Zones
Figure 3-8	EPD Water Quality Monitoring Stations
Figure 3-9	EPD Sediment Quality Monitoring Stations in Typhoon Shelters and Open Waters of Hong Kong
Figure 3-10	Sampling Locations at the Existing Site

Figure 3-11	Sampling Locations at the Proposed Site
Figure 3-12	Sampling Locations of Reference Sediment
Figure 3-13	The Sediment Classification of the Collection Sediment Samples at the Existing Site
Figure 3-14	The Sediment Classification of the Collection Sediment Samples at the Proposed Site
Figure 3-15	The Pit and the Anchor Block
Figure 3-16	The Discharge Points of the Dock
Figure 3-17	Schematic Design of the Settling Tank
Figure 5-1	Location of Nearby Air Sensitive Receivers
Figure 5-2	Air Quality Impact Assessment Area
Figure 6-1	Relocation Process Flow Diagrams
Figure 6-2	Location of Yiu Lian Floating Dock No.3 at Tsing Yi

## **Appendices**

### **Appendix 2A**

Construction Programme

### **Appendix 3A**

Literature Review on the Handling and Treatment Methods for Contaminated Sediment

### **Appendix 3B**

Ship Receiving Procedure

### **Appendix 3C**

Literature Review on the Characteristics and Potential Environmental Impacts of Non-TBT Antifouling Paints

### **Appendix 3D**

Bioaccumulation Test Report

### **Appendix 3E**

Illustration of the Dredging Process at the Existing Site

### **Appendix 3F**

Water Quality Objectives for North Western Water Control Zone and Western Buffer Water Control Zone

### **Appendix 5A**

Air Pollution Emission Rates

### **Appendix 5B**

Air Quality Modelling Results

### **Appendix 6A**

Evacuation Plan for Floating Dock No. 3

### **Appendix 7A**

Oil Pollution Contingency Procedure

# 1 Introduction

---

## 1.1 Background

- 1.1.1 Hyder was commissioned by Yiu Lian Dockyards Ltd (Yiu Lian), to carry out an environmental impact assessment for relocating Yiu Lian Floating Dock No. 3 (the Dock) from Yam O Wan to the southwest coast of Tsing Yi. Figure 1-1 shows the existing location and the proposed new location.
- 1.1.2 A Project Profile (No. PP-239/2005) was submitted to the Environmental Protection Department (EPD) on 24 January 2005 for applying an Environmental Impact Assessment Study Brief under Section 5(1) of the Environmental Impact Assessment Ordinance. An EIA Study Brief (ESB-124/2005) was issued by the Director of Environmental Protection on 8 March 2005.
- 1.1.3 The Dock has been in operation at Yam O Wan since 1989 with the written permission of the Director of the Marine Department.
- 1.1.4 In 1998, the Government changed the land use proposal of North-East Lantau Port from the Lantau Port concept to the basis of the tourism and recreation theme. The re-orientation of the planning rendered Yiu Lian's facilities incompatible with the overall planning context, as the retention of the Dock at Yam O would not fit into the rezoning plan of the area and would constitute interface issues, particularly environmental and visual impacts.
- 1.1.5 Based on a decision reached at the Committee on Planning and Land Development on 21 December 1999, a revised program associated with the reclamation and proposed developments at Yam O was formulated so as to allow a continuing operation of the Yiu Lian facilities until the expiry of the existing lease term in 2008 in order to minimise any impact upon the facilities. Policy support was secured regarding the possible re-provisioning to the facilities as it had already been identified as being essential in nature for supporting port activities.
- 1.1.6 In January 2003, the project proponent notified the Marine Department of the relocation of the Dock from the existing Yam O Wan site to the southwest coast of Tsing Yi Island. The project proponent was subsequently informed that the Marine Department had no objection in principle to the relocation of the Dock to the proposed Tsing Yi site.
- 1.1.7 From April to August 2003, the project proponent notified the Economic Department and Labour Bureau, the Agriculture, Fisheries and Conservation Department, the Town Planning Board, the Planning Department, the Lands Department, and the Antiquities and Monuments Office, of the relocation of the Dock from the existing site to the southeast coast of Tsing Yi Island. The project proponent was subsequently informed



that the above mentioned departments have no objection in principle to the relocation of the Dock to the proposed Tsing Yi site.

- 1.1.8 There is an on-going discussion between the Marine Department and Yiu Lian regarding if the mooring structure at the existing site should be removed upon decommissioning of the Dock from the existing site.
- 1.1.9 The purpose of this EIA study is to provide information on the nature and extent of the potential environmental impacts arising from the Project and related activities taking place concurrently. This information will contribute to decisions by the Director of the Environmental Protection Department on:
- (i) the overall acceptability of any adverse environmental consequences that are likely to arise as a result of the Project;
  - (ii) the conditions and requirements for the Project to mitigate against adverse environmental consequences wherever practicable; and
  - (iii) the acceptability of any residual impacts after the proposed mitigation measures are implemented.

## 1.2 Objectives of This EIA Study

- 1.2.1 The objectives of the EIA study are as follows:
- (i) to describe the Project and associated works together with the requirements for carrying out the Project;
  - (ii) to identify and describe the elements of the community and environment likely to be affected by the Project and/or likely to cause adverse impacts to the Project, including natural and man-made environment and the associated environmental constraints;
  - (iii) to identify potential Tributyltin (TBT) and heavy metal contamination in marine sediments due to operation of the Dock in Lantau and ways to minimise and mitigate the impacts;
  - (iv) to identify and quantify emission sources and determine the significance of impacts on sensitive receivers and potential affected uses including those along the Sham Tseng coast, especially in respect of marine water and sediment quality impacts;
  - (v) to identify mitigation measures for the proposed Dock at Tsing Yi with regard to the risk incidence associated with the Caltex and ExxonMobil West terminals at southwest Tsing Yi;
  - (vi) to propose the provision of mitigation measures so as to minimize pollution, environmental disturbance and nuisance arising from the Project;
  - (vii) to investigate the feasibility, practicability, effectiveness and implications of the proposed mitigation measures;
  - (viii) to identify, predict and evaluate the residual environmental impacts (i.e. after practicable mitigation) and the cumulative effects expected

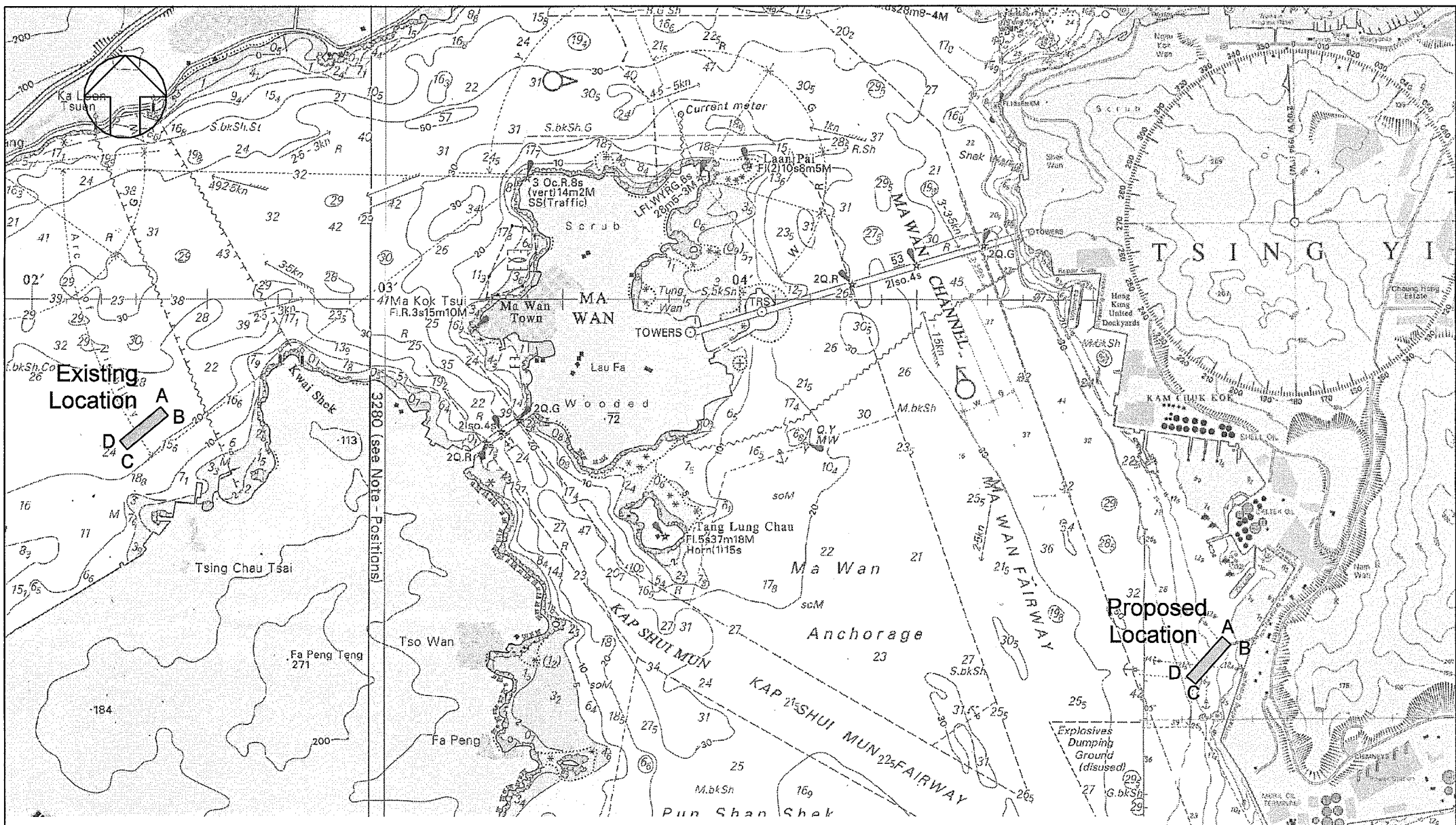
to arise from the Project in relation to the sensitive receivers and potential affected uses;


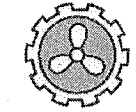
- (ix) to identify, assess and specify methods, measures and standards, to be included in the detailed design, decommissioning, construction and operation stage of the Project which are necessary to mitigate these environmental impacts and reduce them to acceptable levels;
- (x) to investigate the extent of the secondary environmental impacts that may arise from the proposed mitigation measures and to identify constraints associated with the mitigation measures in the EIA study, as well as the provision of any necessary mitigation measures;
- (xi) to identify constraints associated with the mitigation measures recommended in the EIA study; and
- (xii) to design and specify the environmental monitoring and audit requirements to ensure the effective implementation of the environmental protection and pollution control measures.

## 1.3 The Structure of This EIA Report

1.3.1 Following this introductory section, the reminding sections of this EIA Report are:

- |           |   |
|-----------|---|
| Section 2 | Project details including the site selection, construction activities, methods, operation regime and work programmes. |
| Section 3 | Baseline conditions of the water quality and assessment of water quality impact                                       |
| Section 4 | Waste management implications   |
| Section 5 | Potential air quality impact arising from the operation of the Dock at west of Tsing Yi                               |
| Section 6 | Hazard assessment for the operational stage at Tsing Yi   |
| Section 7 | Potential oil spillage and its impacts during the future Dock operation at Tsing Yi                                   |
| Section 8 | Conclusion and recommendations of the EIA Study Report  |
| Section 9 | Implementation Schedules of recommended mitigation measures for various environmental issues                          |



<p>CONSULTANT</p>  <p>Hyder Consulting</p>	<p>CLIENT</p>  <p>友聯船廠有限公司 Yiu Lian Dockyards Limited</p>
---	--

<p>DRAWING TITLE</p> <h2 style="text-align: center;">Relocation of Yiu Lián Floating Dock No. 3</h2> <h3 style="text-align: center;">The Location of the Existing Floating Dock and Proposed New Site</h3>
--

DESIGNED	S. OR	CHECKED	G. Y. LI	
DRAWN	T. KWAN	CHECKED	S. OR	
APPROVED	G. Y. LI	© Copyright Reserved All dimensions are in mm unless shown otherwise. No measurement should be taken from drawing directly.		
DATE	12-10-2005			
SCALE	1 : 25000			
DRG. NO.	Figure 1-1		REV.	-