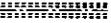
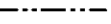

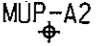


NOTE:
 1. THE FINAL LOCATIONS OF THE MONITORING STATIONS SHALL BE PROPOSED BY THE ENVIRONMENTAL TEAM (ET) LEADER AND VERIFIED BY THE INDEPENDENT ENVIRONMENTAL CHECKER (IEC) BEFORE SUBMITTING TO EPD FOR APPROVAL PRIOR TO COMMENCEMENT OF ANY MONITORING.

LEGEND:

-  PROPOSED BOX CULVERT
-  SITE BOUNDARY
-  REPRESENTATIVE AIR SENSITIVE RECEIVERS
-  AIR QUALITY MONITORING STATION

E	09/05	CHANNEL UPDATED	CHH
D	08/05	CHANNEL DESIGN & BOUNDARY REVISED	CHH
C	06/05	CHANNEL & BOUNDARY UPDATED	CHH
B	09/04	FOOTPATH & VERGE UPDATED	HMC
A	08/04	ISSUE FOR PRELIMINARY REPORT	HMC
Revision	Date	Description	Initial
	Designed	Checked	Drawn
Initial	CMY/JK	CSL	PJL
Date	03/04	03/04	03/04

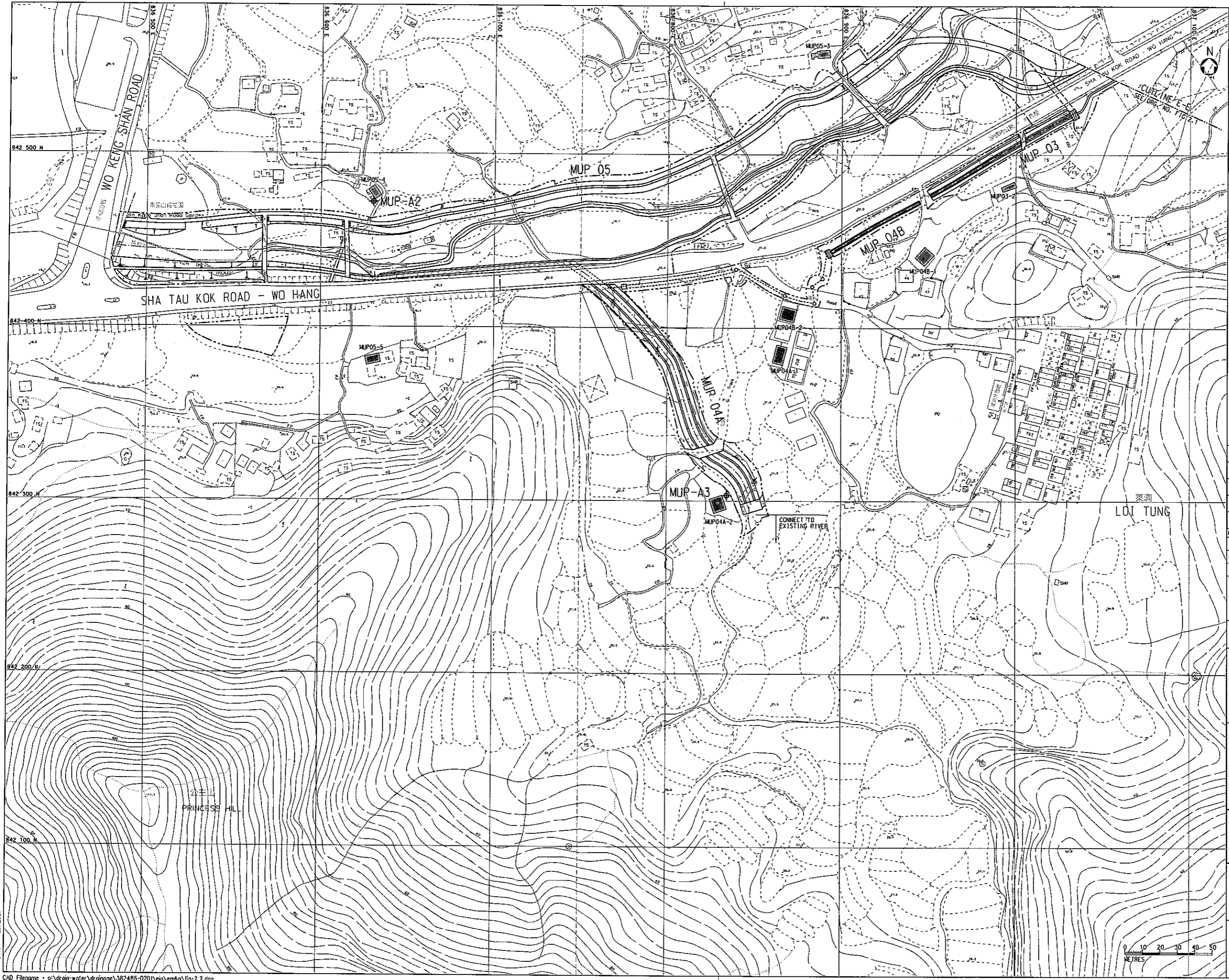
Agreement no. CE 6/2002 (DS)
 Contract title
 DRAINAGE IMPROVEMENT IN NORTHERN NEW TERRITORIES - PACKAGE C
 INVESTIGATION, DESIGN AND CONSTRUCTION

Figure title
 LOCATIONS OF PROPOSED AIR QUALITY MONITORING STATION AND REPRESENTATIVE AIR SENSITIVE RECEIVERS FOR PROPOSED CHANNEL AT MAN UK PING REGION (MUP03,04A,04B&05) (SHEET 2 OF 2)

Figure no. 2.2
 Scale A3 1:2000

香港特別行政區政府渠務署
 THE GOVERNMENT OF THE HONG KONG SPECIAL ADMINISTRATIVE REGION
 DRAINAGE SERVICES DEPARTMENT


 BLACK & VEATCH HONG KONG LIMITED
 博威工程顧問有限公司



Plot Date - 17/29/2007