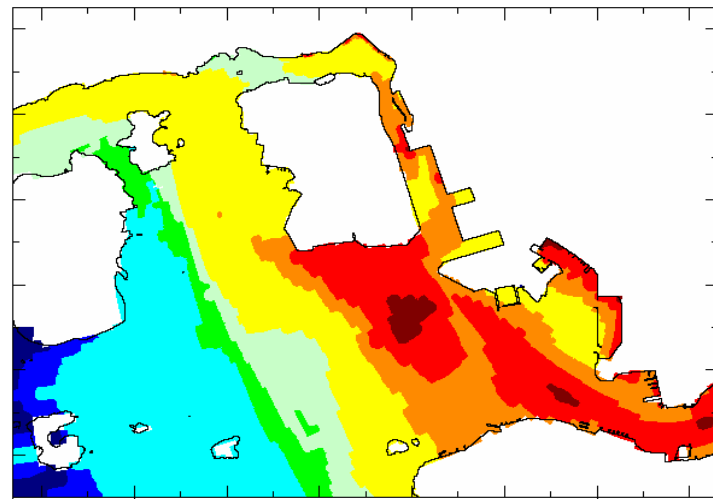
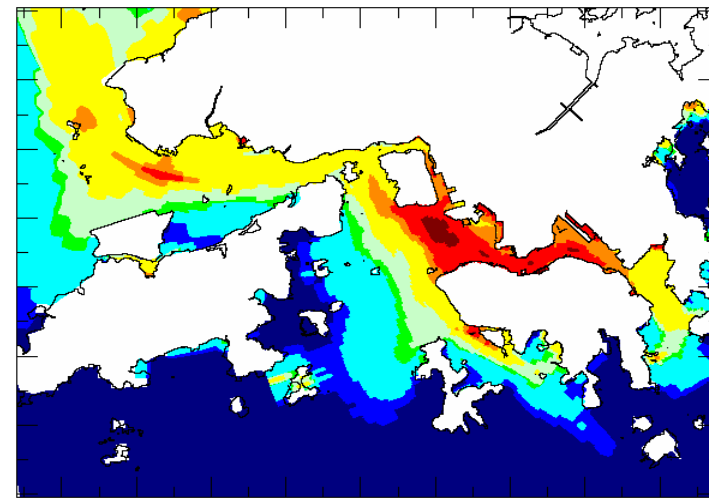


(Overview)

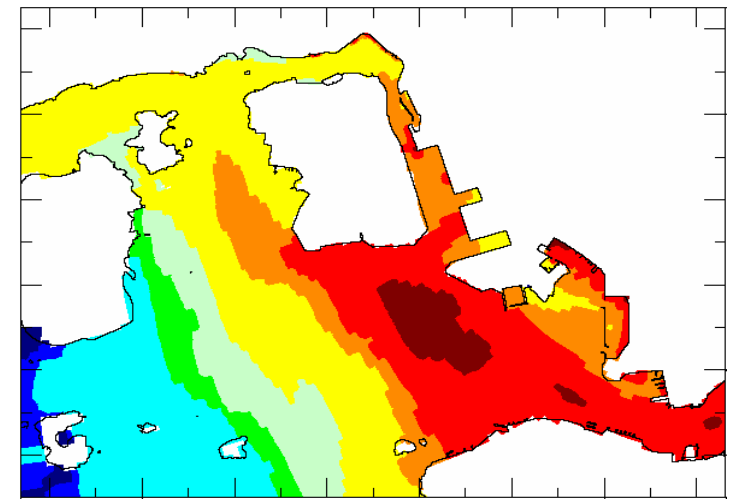


(Close Up)

6-Hour Emergency Discharge at Spring Tide - Scenario 5a

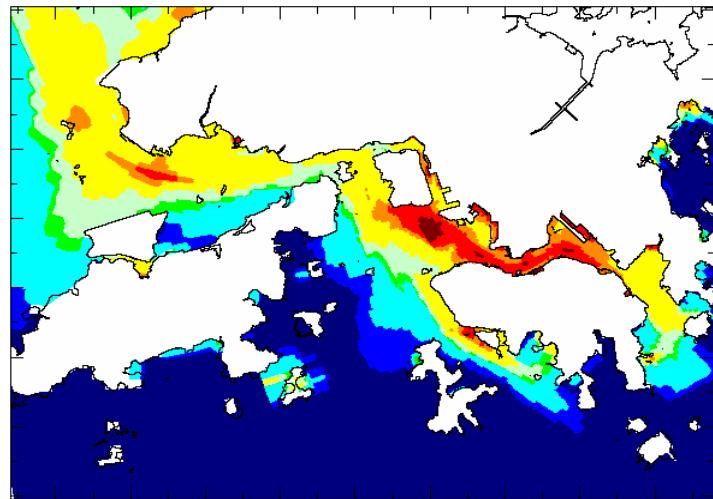


(Overview)

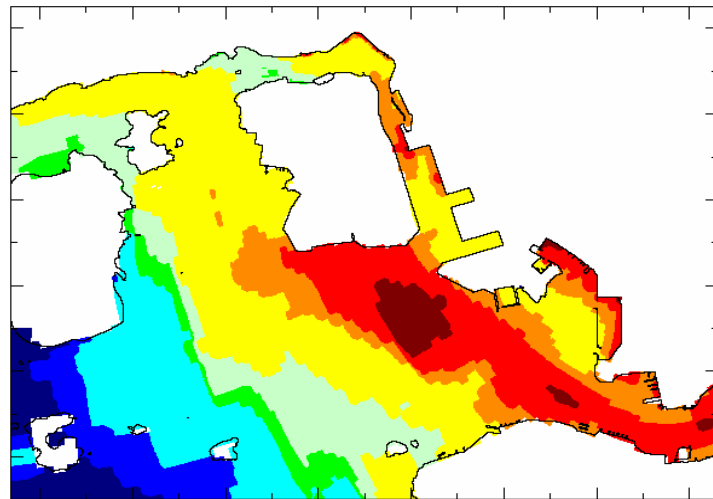


(Close Up)

24-Hour Emergency Discharge at Spring Tide - Scenario 5b

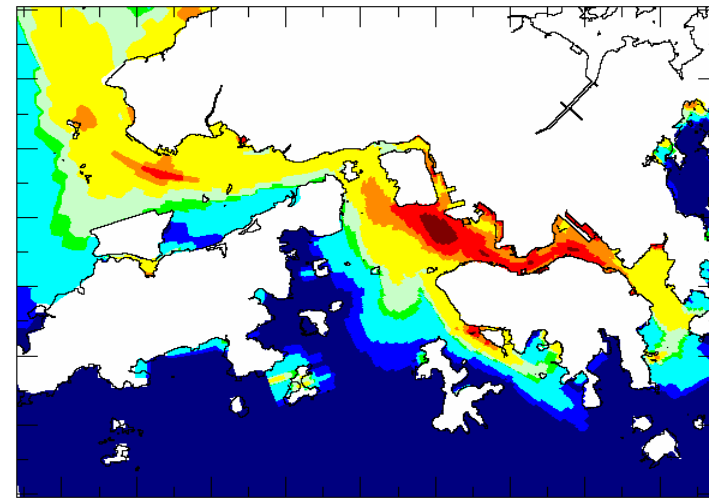


(Overview)

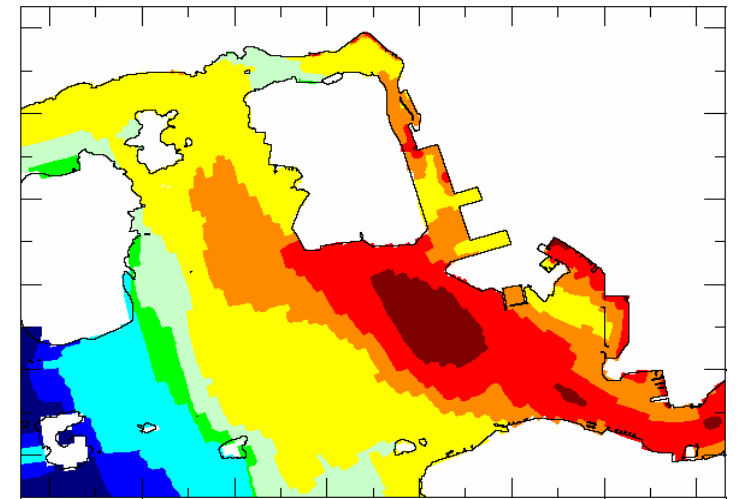


(Close Up)

6-Hour Emergency Discharge at Neap Tide - Scenario 5a

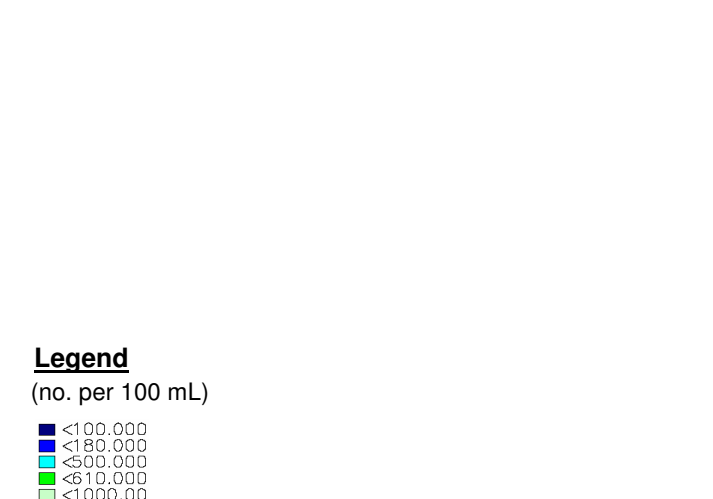


(Overview)

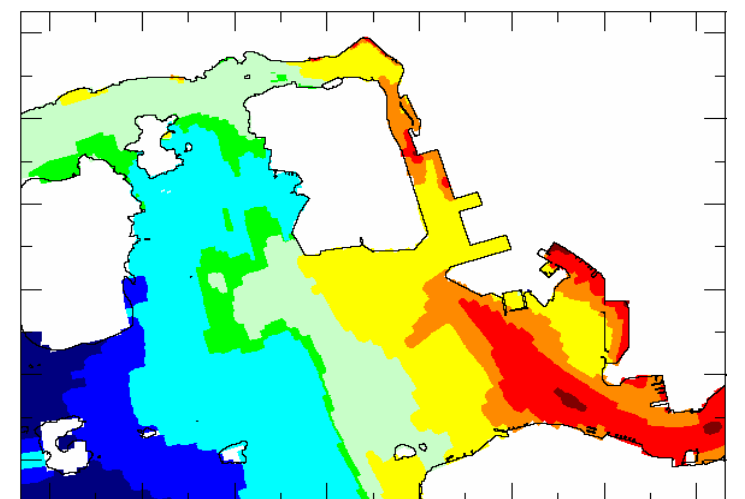


(Close Up)

24-Hour Emergency Discharge at Neap Tide - Scenario 5b



(Overview)



(Close Up)

Normal Operation with Disinfection - Scenario 1b

Legend

(no. per 100 mL)

- <100.000
- <180.000
- <500.000
- <610.000
- <1000.00
- <5000.00
- <10000.0
- <50000.0
- >50000.0

SCALE	N.T.S.	DATE	JUL 2006
CHECK	AKYC	DRAWN	WCM
JOB NO.	A06605	DRAWING No.	5.36
		Rev	-