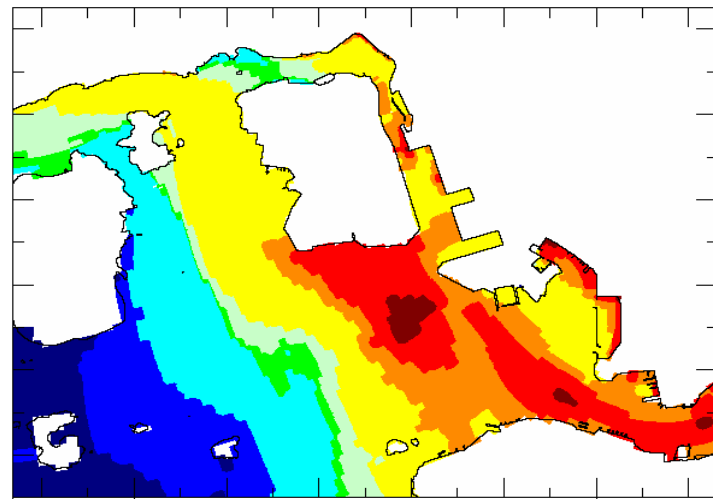
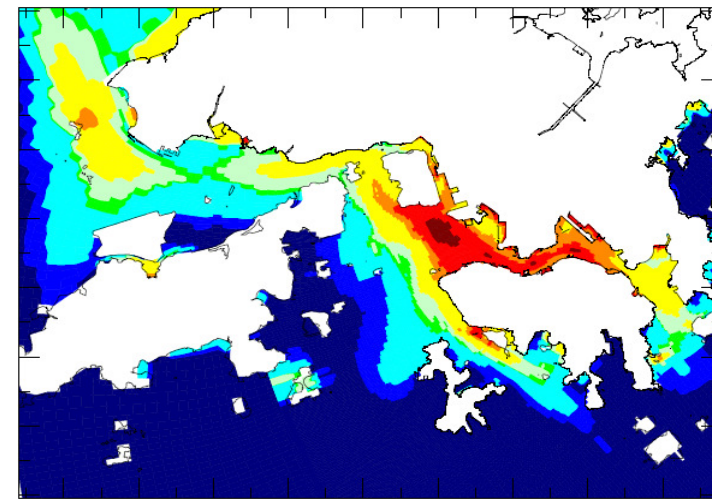


(Overview)

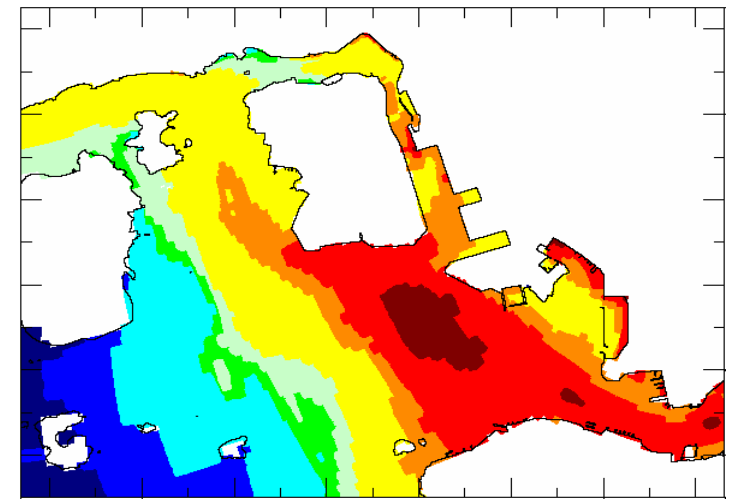


(Close Up)

6-Hour Emergency Discharge at Spring Tide - Scenario 6a

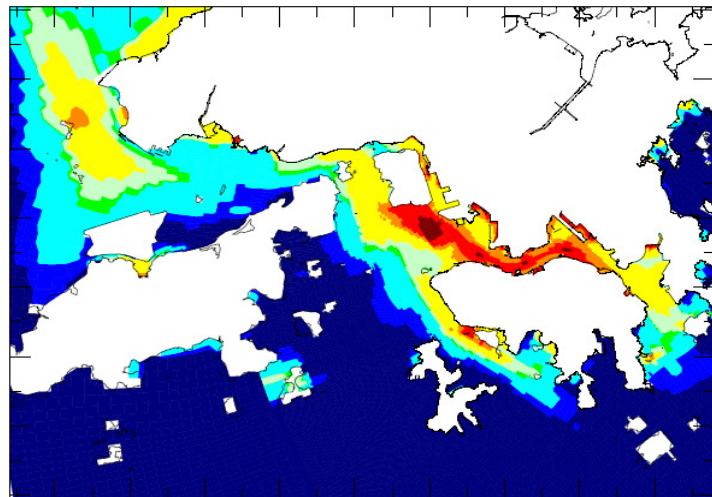


(Overview)

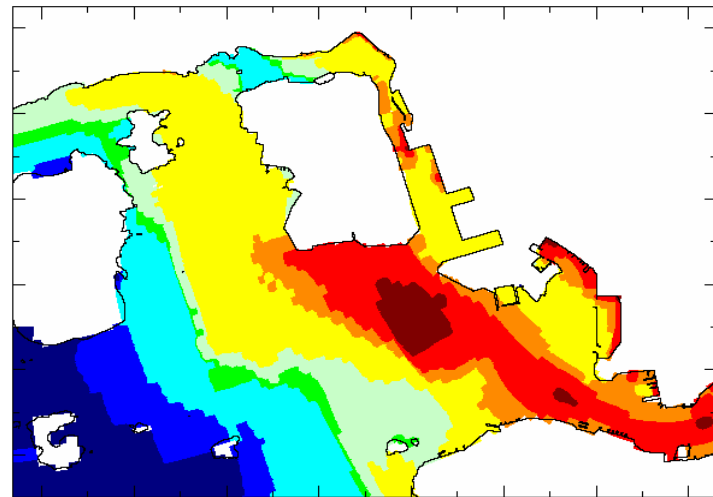


(Close Up)

24-Hour Emergency Discharge at Spring Tide - Scenario 6b

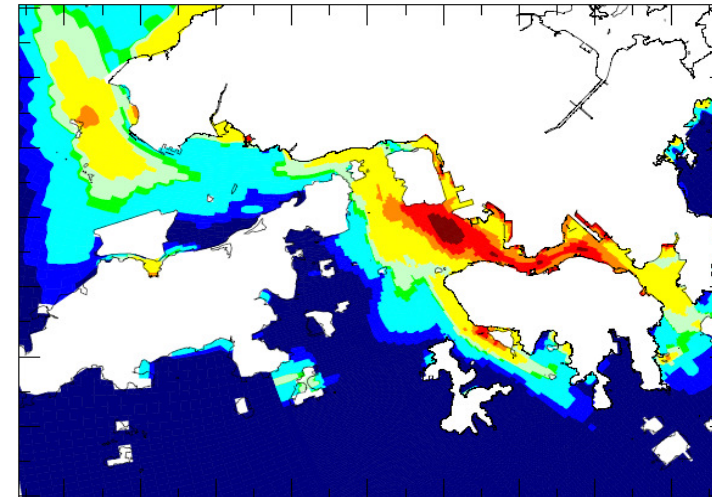


(Overview)

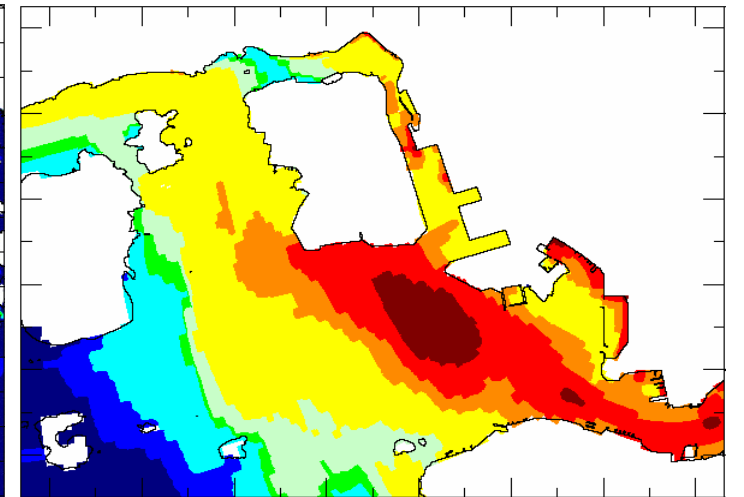


(Close Up)

6-Hour Emergency Discharge at Neap Tide - Scenario 6a

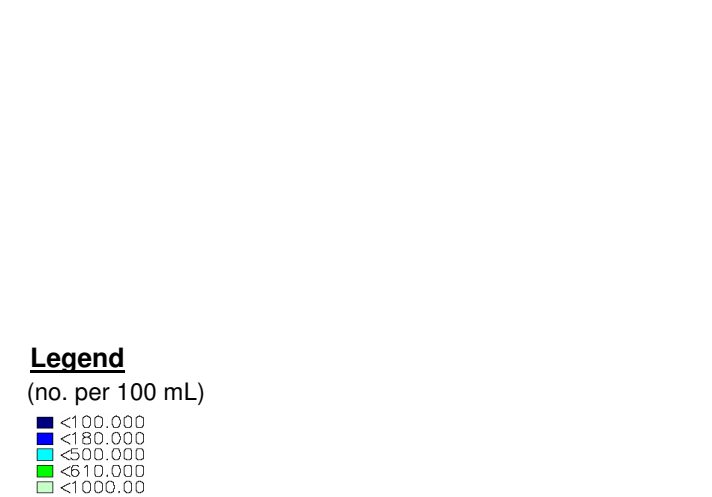


(Overview)

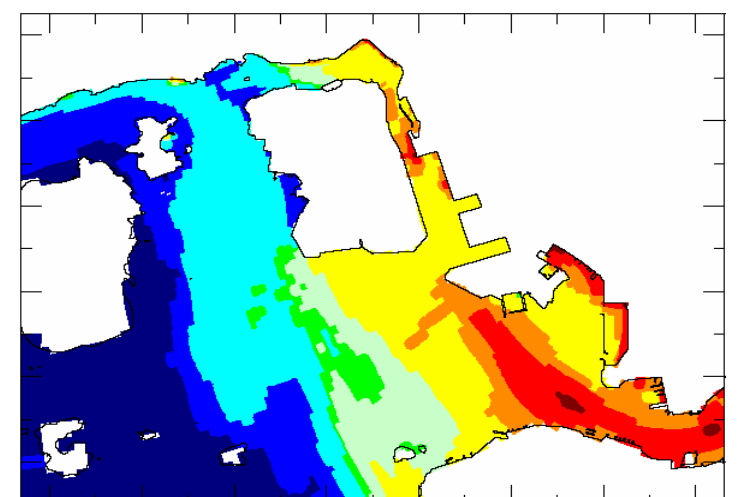


(Close Up)

24-Hour Emergency Discharge at Neap Tide - Scenario 6b



(Overview)

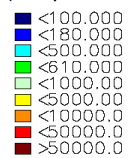


(Close Up)

Normal Operation with Disinfection - Scenario 2b

Legend

(no. per 100 mL)



SCALE	N.T.S.	DATE	JUL 2006
CHECK	AKYC	DRAWN	WCM
JOB NO.	A06605	DRAWING No.	5.38
		Rev	-