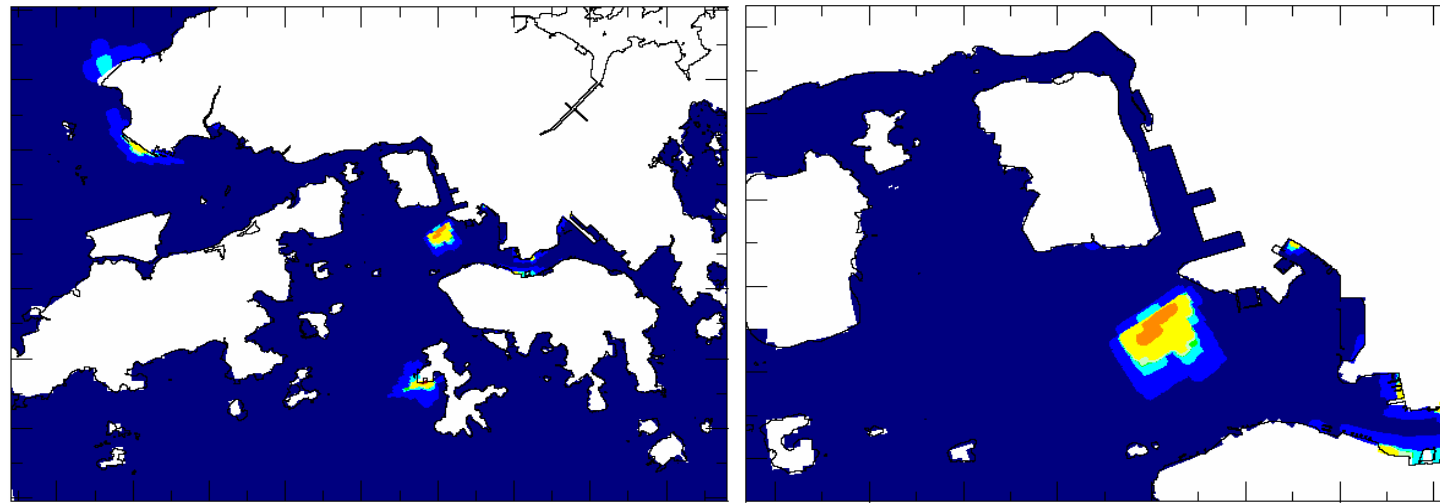
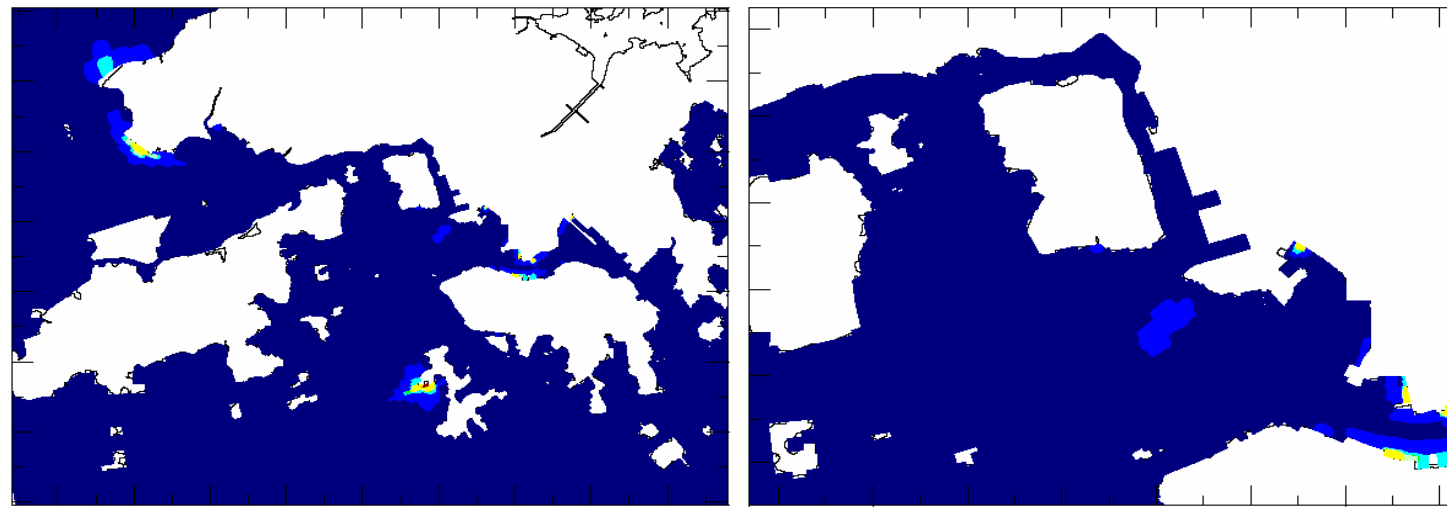


(Overview) (Close Up)  
**40-Min Emergency Discharge at Spring Tide - Scenario 8a**



(Overview) (Close Up)  
**40-Min Emergency Discharge at Neap Tide - Scenario 8a**



(Overview) (Close Up)  
**Normal Operation with Disinfection - Scenario 1b**

**Legend**  
(mg/L)

- <0.0010
- <0.0050
- <0.0075
- <0.0080
- <0.0100
- <0.0500
- <0.1000
- <0.1500
- >0.1500

SCALE	N.T.S.	DATE	JUL 2006
CHECK	AKYC	DRAWN	SPM
JOB NO.	A06605	DRAWING No.	5.43
		Rev	-