






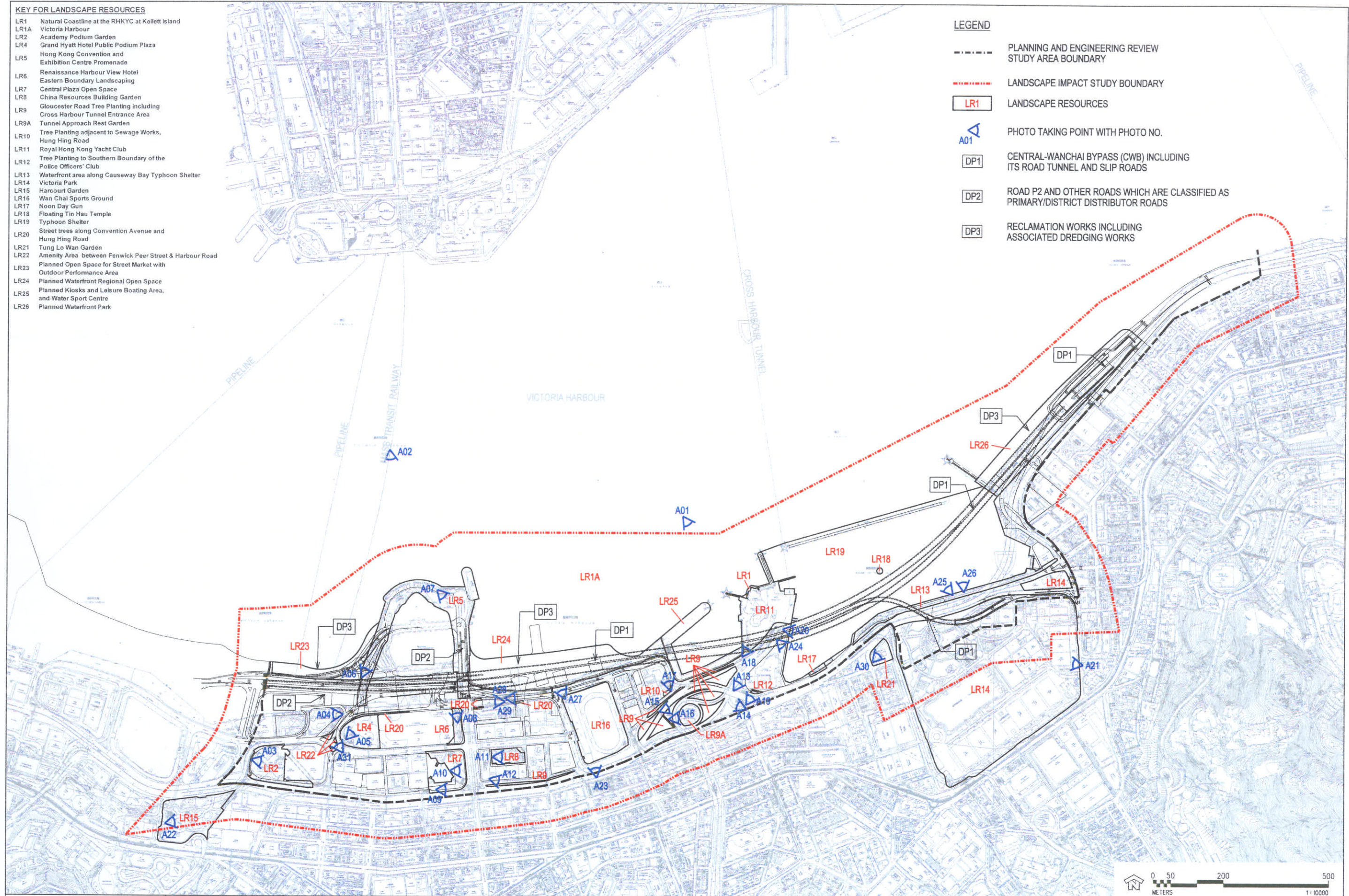


**KEY FOR LANDSCAPE RESOURCES**

- LR1 Natural Coastline at the RHKYC at Kellett Island
- LR1A Victoria Harbour
- LR2 Academy Podium Garden
- LR4 Grand Hyatt Hotel Public Podium Plaza
- LR5 Hong Kong Convention and Exhibition Centre Promenade
- LR6 Renaissance Harbour View Hotel Eastern Boundary Landscaping
- LR7 Central Plaza Open Space
- LR8 China Resources Building Garden
- LR9 Gloucester Road Tree Planting including Cross Harbour Tunnel Entrance Area
- LR9A Tunnel Approach Rest Garden
- LR10 Tree Planting adjacent to Sewage Works, Hung Hing Road
- LR11 Royal Hong Kong Yacht Club
- LR12 Tree Planting to Southern Boundary of the Police Officers' Club
- LR13 Waterfront area along Causeway Bay Typhoon Shelter
- LR14 Victoria Park
- LR15 Harcourt Garden
- LR16 Wan Chai Sports Ground
- LR17 Noon Day Gun
- LR18 Floating Tin Hau Temple
- LR19 Typhoon Shelter
- LR20 Street trees along Convention Avenue and Hung Hing Road
- LR21 Tung Lo Wan Garden
- LR22 Amenity Area between Fenwick Peer Street & Harbour Road
- LR23 Planned Open Space for Street Market with Outdoor Performance Area
- LR24 Planned Waterfront Regional Open Space
- LR25 Planned Kiosks and Leisure Boating Area, and Water Sport Centre
- LR26 Planned Waterfront Park

**LEGEND**

-  PLANNING AND ENGINEERING REVIEW STUDY AREA BOUNDARY
-  LANDSCAPE IMPACT STUDY BOUNDARY
-  LANDSCAPE RESOURCES
-  PHOTO TAKING POINT WITH PHOTO NO.
-  CENTRAL-WANCHAI BYPASS (CWB) INCLUDING ITS ROAD TUNNEL AND SLIP ROADS
-  ROAD P2 AND OTHER ROADS WHICH ARE CLASSIFIED AS PRIMARY/DISTRICT DISTRIBUTOR ROADS
-  RECLAMATION WORKS INCLUDING ASSOCIATED DREDGING WORKS



27/9/2007 15:59:46

FILE : ...wanchai\dgn\em\FIGURE 8-1b.dgn