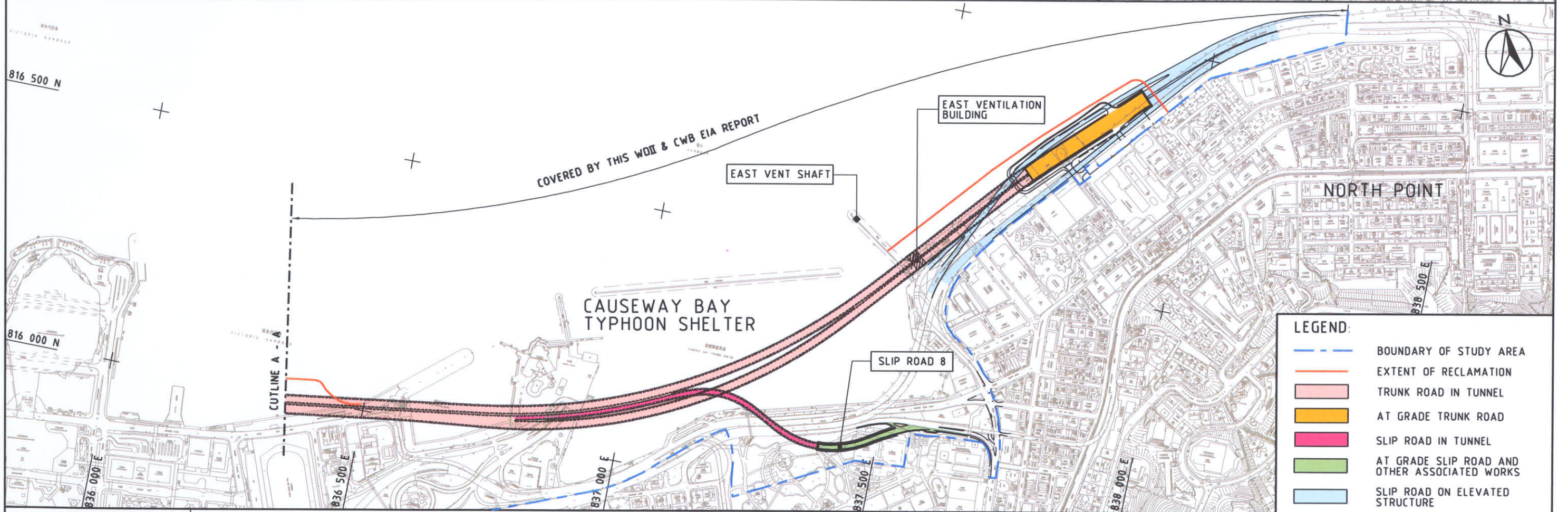
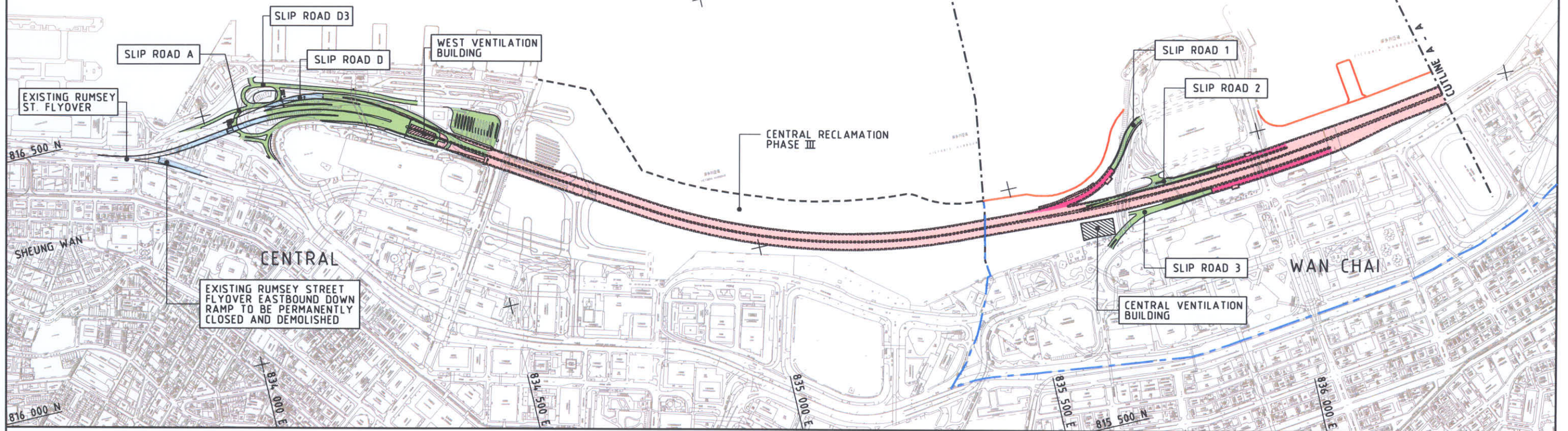


COVERED BY APPROVED CWB & IECL EIA REPORT
(EIAO REGISTER NO. AEIAR - 041/2001)

COVERED BY THIS WDI & CWB EIA REPORT



LEGEND:

	BOUNDARY OF STUDY AREA
	EXTENT OF RECLAMATION
	TRUNK ROAD IN TUNNEL
	AT GRADE TRUNK ROAD
	SLIP ROAD IN TUNNEL
	AT GRADE SLIP ROAD AND OTHER ASSOCIATED WORKS
	SLIP ROAD ON ELEVATED STRUCTURE

WAN CHAI DEVELOPMENT PHASE II - PLANNING AND ENGINEERING REVIEW

GENERAL LAYOUT OF THE CWB FROM CENTRAL TO NORTH POINT

FIGURE 1.3

DATE: 2007-11-28 16:10:56

MAUNSELL | AECOM
Maunsell Consultants Asia Ltd