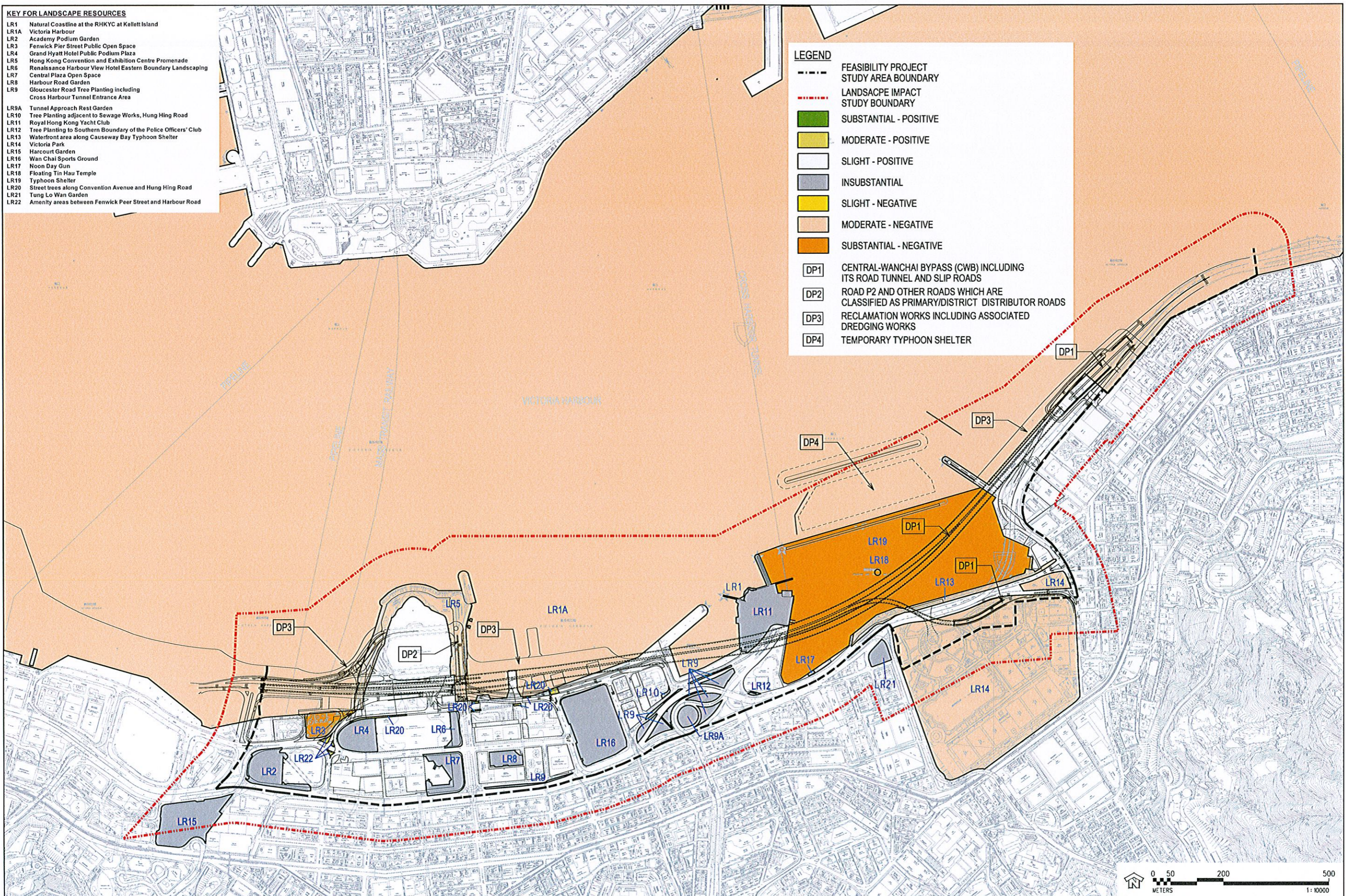


KEY FOR LANDSCAPE RESOURCES

- LR1 Natural Coastline at the RHKYC at Kellett Island
- LR1A Victoria Harbour
- LR2 Academy Podium Garden
- LR3 Fenwick Pier Street Public Open Space
- LR4 Grand Hyatt Hotel Public Podium Plaza
- LR5 Hong Kong Convention and Exhibition Centre Promenade
- LR6 Renaissance Harbour View Hotel Eastern Boundary Landscaping
- LR7 Central Plaza Open Space
- LR8 Harbour Road Garden
- LR9 Gloucester Road Tree Planting including Cross Harbour Tunnel Entrance Area
- LR9A Tunnel Approach Rest Garden
- LR10 Tree Planting adjacent to Sewage Works, Hung Hing Road
- LR11 Royal Hong Kong Yacht Club
- LR12 Tree Planting to Southern Boundary of the Police Officers' Club
- LR13 Waterfront area along Causeway Bay Typhoon Shelter
- LR14 Victoria Park
- LR15 Harcourt Garden
- LR16 Wan Chai Sports Ground
- LR17 Noon Day Gun
- LR18 Floating Tin Hau Temple
- LR19 Typhoon Shelter
- LR20 Street trees along Convention Avenue and Hung Hing Road
- LR21 Tung Lo Wan Garden
- LR22 Amenity areas between Fenwick Peer Street and Harbour Road

LEGEND

- FEASIBILITY PROJECT STUDY AREA BOUNDARY
- LANDSCAPE IMPACT STUDY BOUNDARY
- SUBSTANTIAL - POSITIVE
- MODERATE - POSITIVE
- SLIGHT - POSITIVE
- INSUBSTANTIAL
- SLIGHT - NEGATIVE
- MODERATE - NEGATIVE
- SUBSTANTIAL - NEGATIVE
- DP1 CENTRAL-WANCHAI BYPASS (CWB) INCLUDING ITS ROAD TUNNEL AND SLIP ROADS
- DP2 ROAD P2 AND OTHER ROADS WHICH ARE CLASSIFIED AS PRIMARY/DISTRICT DISTRIBUTOR ROADS
- DP3 RECLAMATION WORKS INCLUDING ASSOCIATED DREDGING WORKS
- DP4 TEMPORARY TYPHOON SHELTER

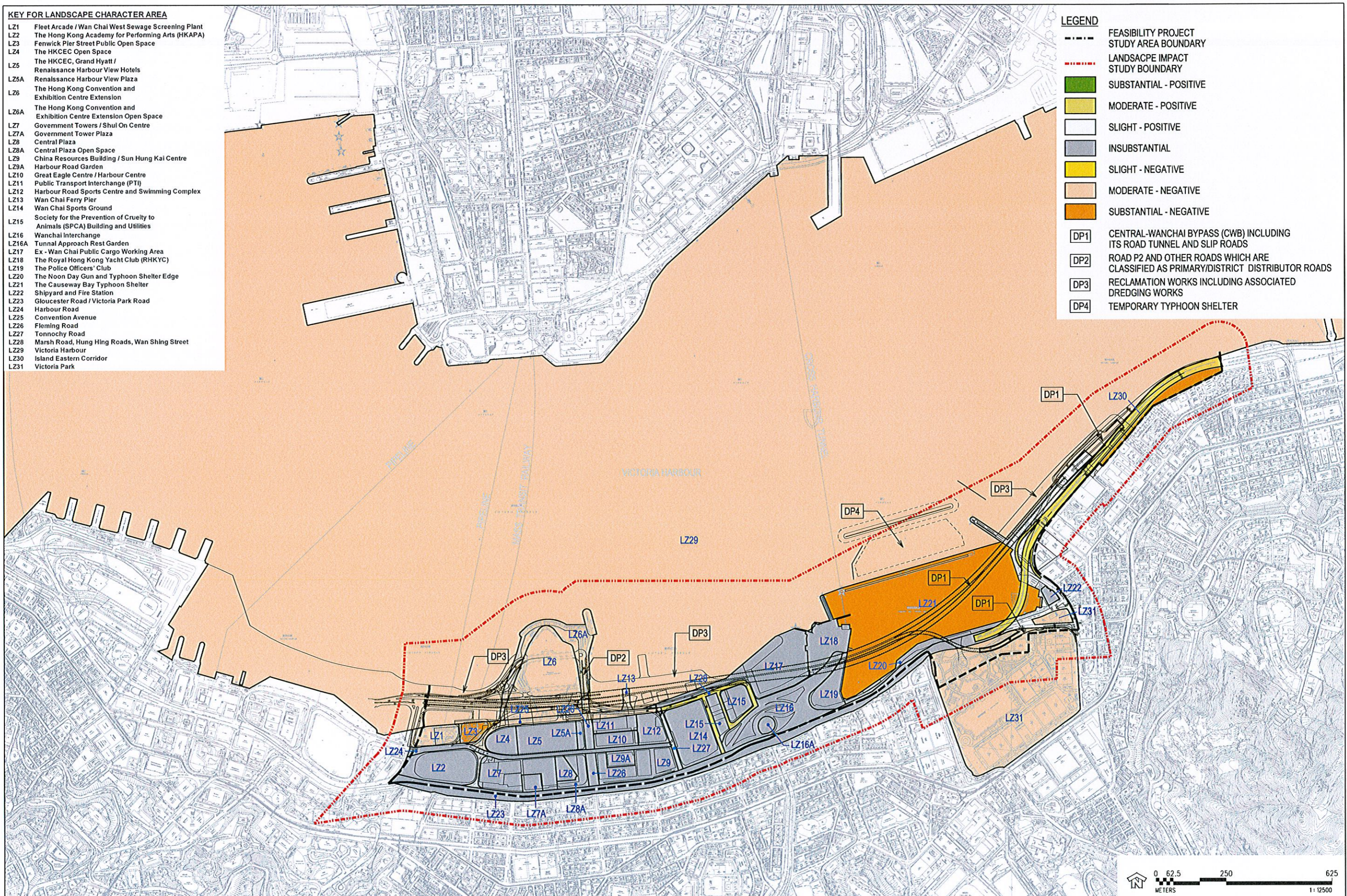


KEY FOR LANDSCAPE CHARACTER AREA

- LZ1 Fleet Arcade / Wan Chai West Sewage Screening Plant
- LZ2 The Hong Kong Academy for Performing Arts (HKAPA)
- LZ3 Fenwick Pier Street Public Open Space
- LZ4 The HKCEC Open Space
- LZ5 The HKCEC, Grand Hyatt / Renaissance Harbour View Hotels
- LZ5A Renaissance Harbour View Plaza
- LZ6 The Hong Kong Convention and Exhibition Centre Extension
- LZ6A The Hong Kong Convention and Exhibition Centre Extension Open Space
- LZ7 Government Towers / Shul On Centre
- LZ7A Government Tower Plaza
- LZ8 Central Plaza
- LZ8A Central Plaza Open Space
- LZ9 China Resources Building / Sun Hung Kai Centre
- LZ9A Harbour Road Garden
- LZ10 Great Eagle Centre / Harbour Centre
- LZ11 Public Transport Interchange (PTI)
- LZ12 Harbour Road Sports Centre and Swimming Complex
- LZ13 Wan Chai Ferry Pier
- LZ14 Wan Chai Sports Ground
- LZ15 Society for the Prevention of Cruelty to Animals (SPCA) Building and Utilities
- LZ16 Wanchai Interchange
- LZ16A Tunnel Approach Rest Garden
- LZ17 Ex - Wan Chai Public Cargo Working Area
- LZ18 The Royal Hong Kong Yacht Club (RHKYC)
- LZ19 The Police Officers' Club
- LZ20 The Noon Day Gun and Typhoon Shelter Edge
- LZ21 The Causeway Bay Typhoon Shelter
- LZ22 Shipyard and Fire Station
- LZ23 Gloucester Road / Victoria Park Road
- LZ24 Harbour Road
- LZ25 Convention Avenue
- LZ26 Fleming Road
- LZ27 Tonnochy Road
- LZ28 Marsh Road, Hung Hing Roads, Wan Shing Street
- LZ29 Victoria Harbour
- LZ30 Island Eastern Corridor
- LZ31 Victoria Park

LEGEND

- FEASIBILITY PROJECT STUDY AREA BOUNDARY
- LANDSCAPE IMPACT STUDY BOUNDARY
- SUBSTANTIAL - POSITIVE
- MODERATE - POSITIVE
- SLIGHT - POSITIVE
- INSUBSTANTIAL
- SLIGHT - NEGATIVE
- MODERATE - NEGATIVE
- SUBSTANTIAL - NEGATIVE
- DP1 CENTRAL-WANCHAI BYPASS (CWB) INCLUDING ITS ROAD TUNNEL AND SLIP ROADS
- DP2 ROAD P2 AND OTHER ROADS WHICH ARE CLASSIFIED AS PRIMARY/DISTRICT DISTRIBUTOR ROADS
- DP3 RECLAMATION WORKS INCLUDING ASSOCIATED DREDGING WORKS
- DP4 TEMPORARY TYPHOON SHELTER

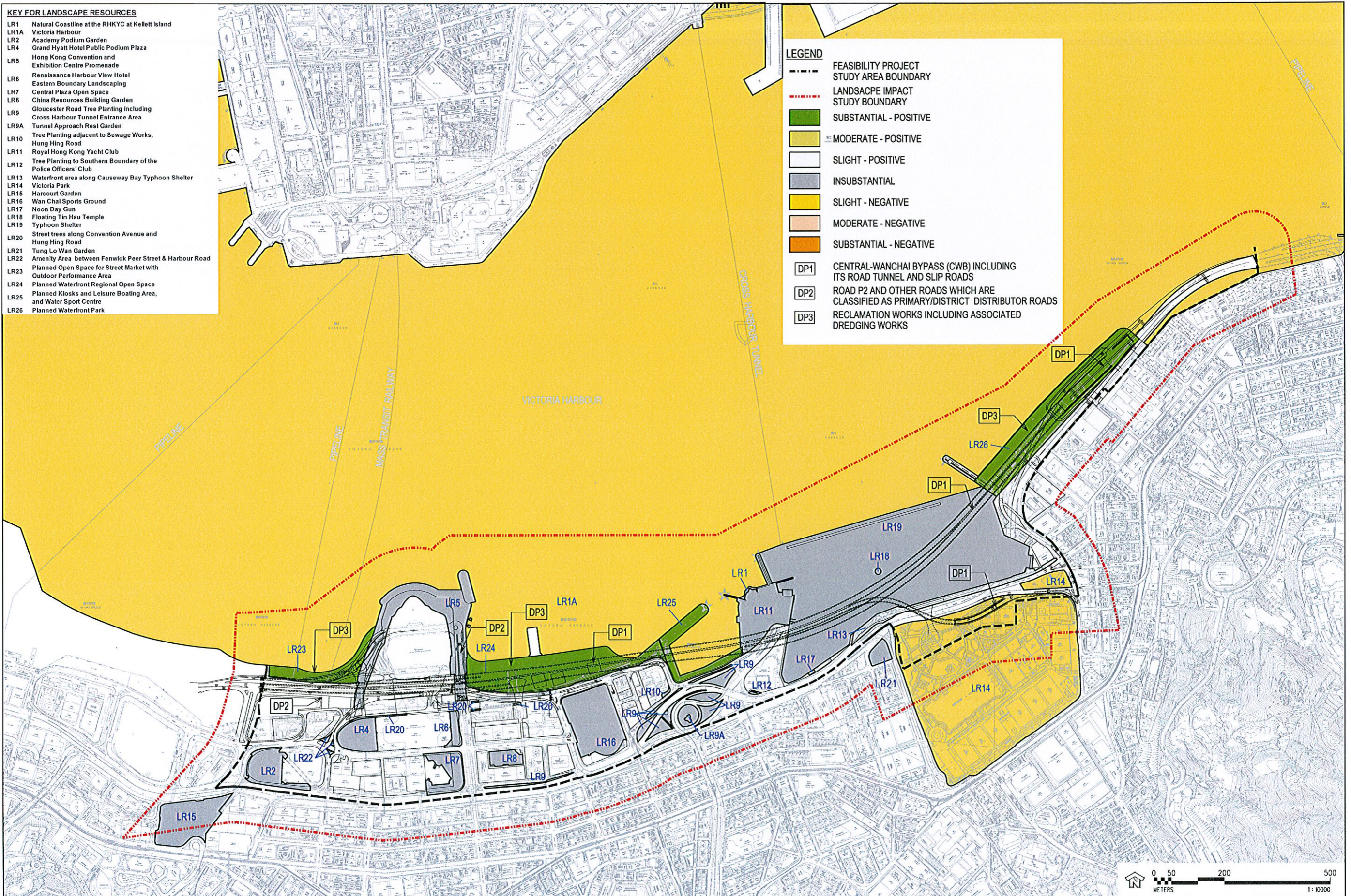


KEY FOR LANDSCAPE RESOURCES

- LR1 Natural Coastline at the RHKYC at Kellett Island
- LR1A Victoria Harbour
- LR2 Academy Podium Garden
- LR4 Grand Hyatt Hotel Public Podium Plaza
- LR5 Hong Kong Convention and Exhibition Centre Promenade
- LR6 Renaissance Harbour View Hotel Eastern Boundary Landscaping
- LR7 Central Plaza Open Space
- LR8 China Resources Building Garden
- LR9 Gloucester Road Tree Planting Including Cross Harbour Tunnel Entrance Area
- LR9A Tunnel Approach Rest Garden
- LR10 Tree Planting adjacent to Sewage Works, Hung Hing Road
- LR11 Royal Hong Kong Yacht Club
- LR12 Tree Planting to Southern Boundary of the Police Officers' Club
- LR13 Waterfront area along Causeway Bay Typhoon Shelter
- LR14 Victoria Park
- LR15 Harcourt Garden
- LR16 Wan Chai Sports Ground
- LR17 Noon Day Gun
- LR18 Floating Tin Hau Temple
- LR19 Typhoon Shelter
- LR20 Street trees along Convention Avenue and Hung Hing Road
- LR21 Tung Lo Wan Garden
- LR22 Amenity Area between Fenwick Peer Street & Harbour Road
- LR23 Planned Open Space for Street Market with Outdoor Performance Area
- LR24 Planned Waterfront Regional Open Space
- LR25 Planned Kiosks and Leisure Boating Area, and Water Sport Centre
- LR26 Planned Waterfront Park

LEGEND

- FEASIBILITY PROJECT STUDY AREA BOUNDARY
- LANDSCAPE IMPACT STUDY BOUNDARY
- SUBSTANTIAL - POSITIVE
- MODERATE - POSITIVE
- SLIGHT - POSITIVE
- INSUBSTANTIAL
- SLIGHT - NEGATIVE
- MODERATE - NEGATIVE
- SUBSTANTIAL - NEGATIVE
- DP1 CENTRAL-WANCHAI BYPASS (CWB) INCLUDING ITS ROAD TUNNEL AND SLIP ROADS
- DP2 ROAD P2 AND OTHER ROADS WHICH ARE CLASSIFIED AS PRIMARY/DISTRICT DISTRIBUTOR ROADS
- DP3 RECLAMATION WORKS INCLUDING ASSOCIATED DREDGING WORKS

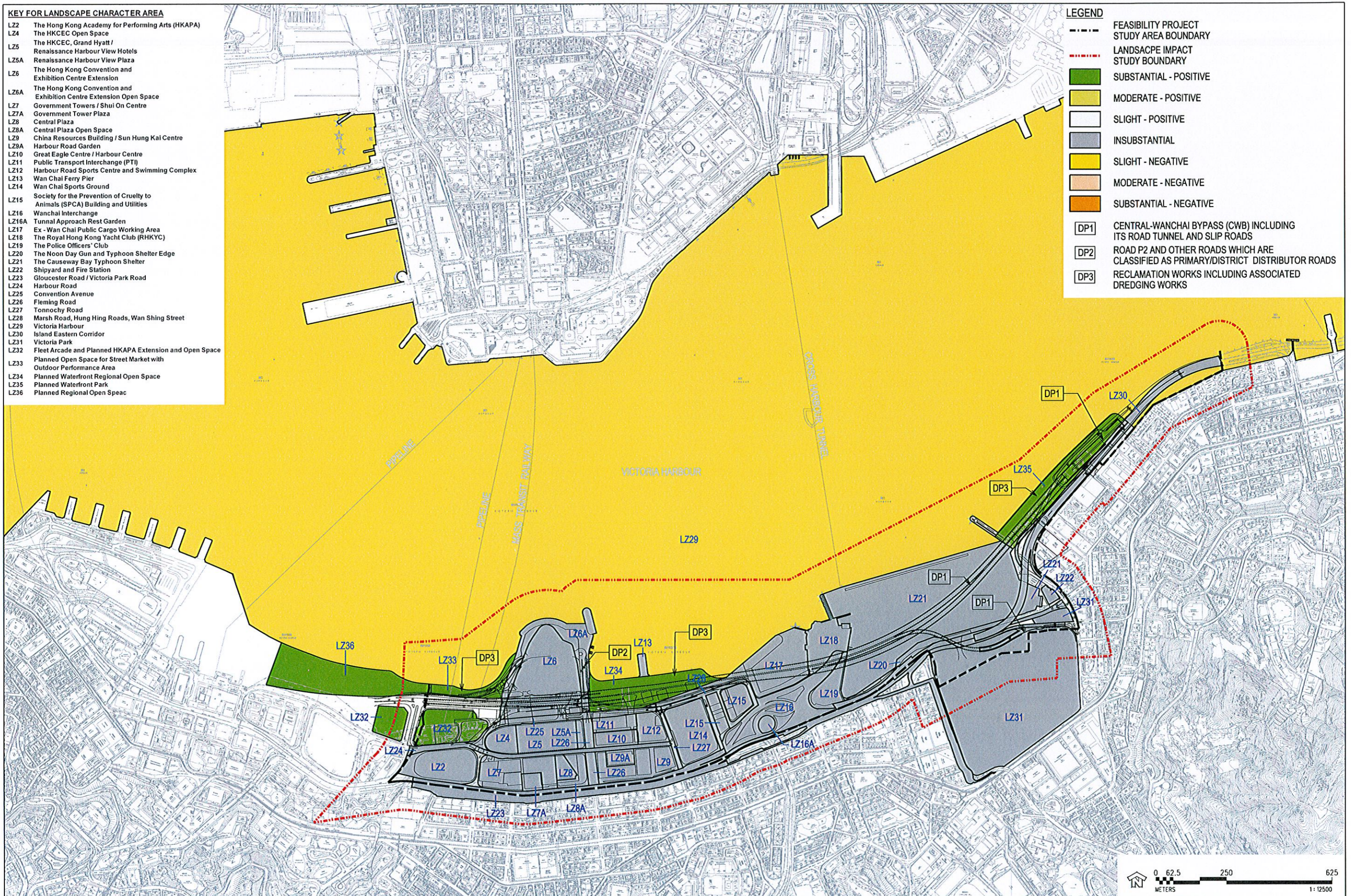


KEY FOR LANDSCAPE CHARACTER AREA

- LZ2 The Hong Kong Academy for Performing Arts (HKAPA)
- LZ4 The HKCEC Open Space
- LZ5 The HKCEC, Grand Hyatt / Renaissance Harbour View Hotels
- LZ5A Renaissance Harbour View Plaza
- LZ6 The Hong Kong Convention and Exhibition Centre Extension
- LZ6A The Hong Kong Convention and Exhibition Centre Extension Open Space
- LZ7 Government Towers / Shui On Centre
- LZ7A Government Tower Plaza
- LZ8 Central Plaza
- LZ8A Central Plaza Open Space
- LZ9 China Resources Building / Sun Hung Kai Centre
- LZ9A Harbour Road Garden
- LZ10 Great Eagle Centre / Harbour Centre
- LZ11 Public Transport Interchange (PTI)
- LZ12 Harbour Road Sports Centre and Swimming Complex
- LZ13 Wan Chai Ferry Pier
- LZ14 Wan Chai Sports Ground
- LZ15 Society for the Prevention of Cruelty to Animals (SPCA) Building and Utilities
- LZ16 Wanchai Interchange
- LZ16A Tunnel Approach Rest Garden
- LZ17 Ex - Wan Chai Public Cargo Working Area
- LZ18 The Royal Hong Kong Yacht Club (RHKYC)
- LZ19 The Police Officers' Club
- LZ20 The Noon Day Gun and Typhoon Shelter Edge
- LZ21 The Causeway Bay Typhoon Shelter
- LZ22 Shipyard and Fire Station
- LZ23 Gloucester Road / Victoria Park Road
- LZ24 Harbour Road
- LZ25 Convention Avenue
- LZ26 Fleming Road
- LZ27 Tomrookly Road
- LZ28 Marsh Road, Hung Hing Roads, Wan Shing Street
- LZ29 Victoria Harbour
- LZ30 Island Eastern Corridor
- LZ31 Victoria Park
- LZ32 Fleet Arcade and Planned HKAPA Extension and Open Space
- LZ33 Planned Open Space for Street Market with Outdoor Performance Area
- LZ34 Planned Waterfront Regional Open Space
- LZ35 Planned Waterfront Park
- LZ36 Planned Regional Open Space

LEGEND

- FEASIBILITY PROJECT STUDY AREA BOUNDARY
- LANDSCAPE IMPACT STUDY BOUNDARY
- SUBSTANTIAL - POSITIVE
- MODERATE - POSITIVE
- SLIGHT - POSITIVE
- INSUBSTANTIAL
- SLIGHT - NEGATIVE
- MODERATE - NEGATIVE
- SUBSTANTIAL - NEGATIVE
- DP1 CENTRAL-WANCHAI BYPASS (CWB) INCLUDING ITS ROAD TUNNEL AND SLIP ROADS
- DP2 ROAD P2 AND OTHER ROADS WHICH ARE CLASSIFIED AS PRIMARY/DISTRICT DISTRIBUTOR ROADS
- DP3 RECLAMATION WORKS INCLUDING ASSOCIATED DREDGING WORKS



WAN CHAI DEVELOPMENT PHASE II - PLANNING AND ENGINEERING REVIEW

RESIDUAL IMPACTS ON LANDSCAPE CHARACTER AREAS DURING OPERATION

FIGURE 10.6.4

7/9/2007 16:31:21
FILE 1 ...wanchai\DOWN\FIGURE 10-6-4.dgn