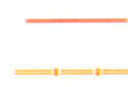
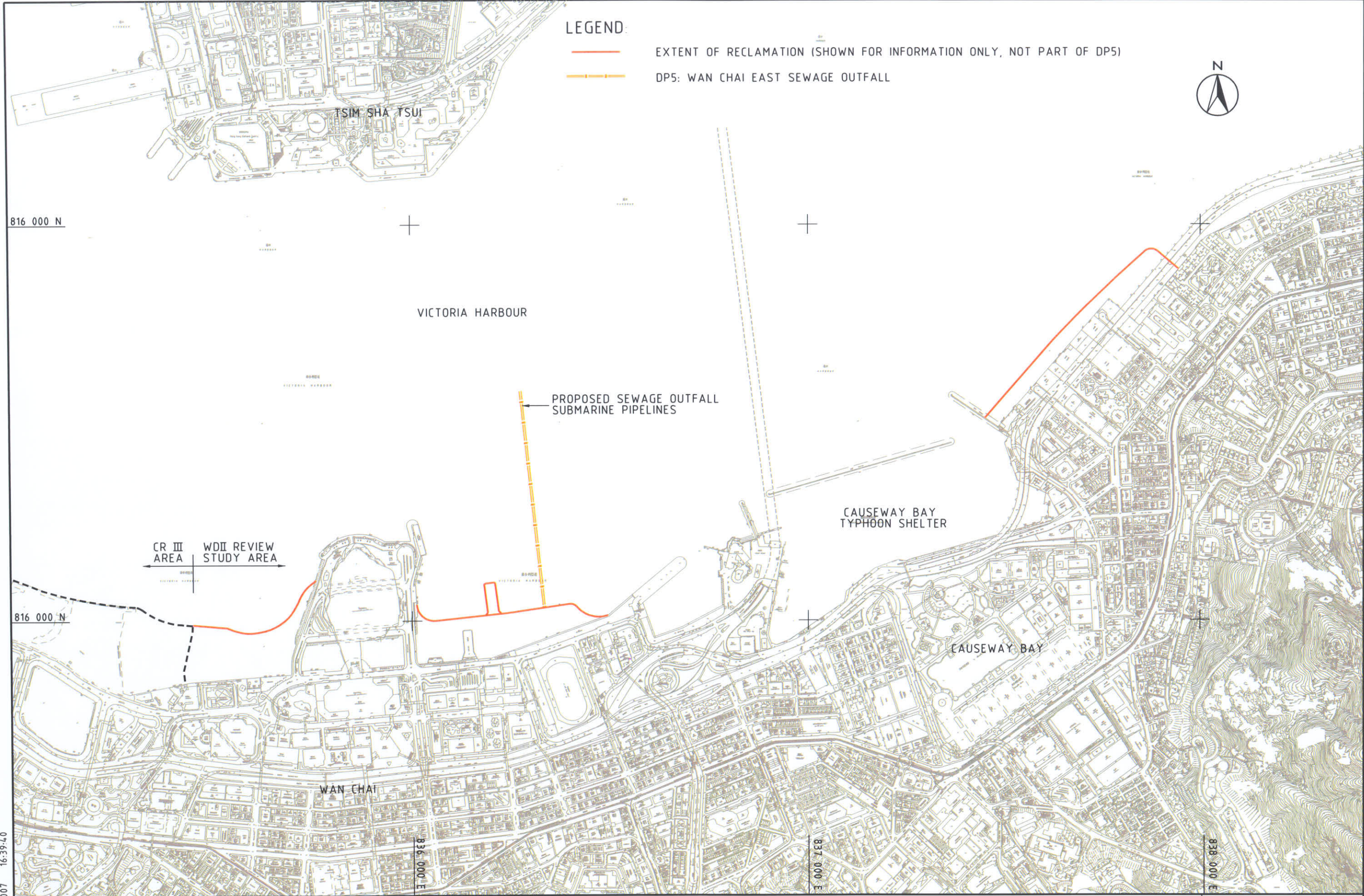


LEGEND:



EXTENT OF RECLAMATION (SHOWN FOR INFORMATION ONLY, NOT PART OF DP5)  
DP5: WAN CHAI EAST SEWAGE OUTFALL



DATE: 31/08/2007 16:39:40

**MAUNSELL | AECOM**  
Maunsell Consultants Asia Ltd

WAN CHAI DEVELOPMENT PHASE II - PLANNING AND ENGINEERING REVIEW

DESIGNATED PROJECT 5 - WAN CHAI EAST SEWAGE OUTFALL

FIGURE 12e