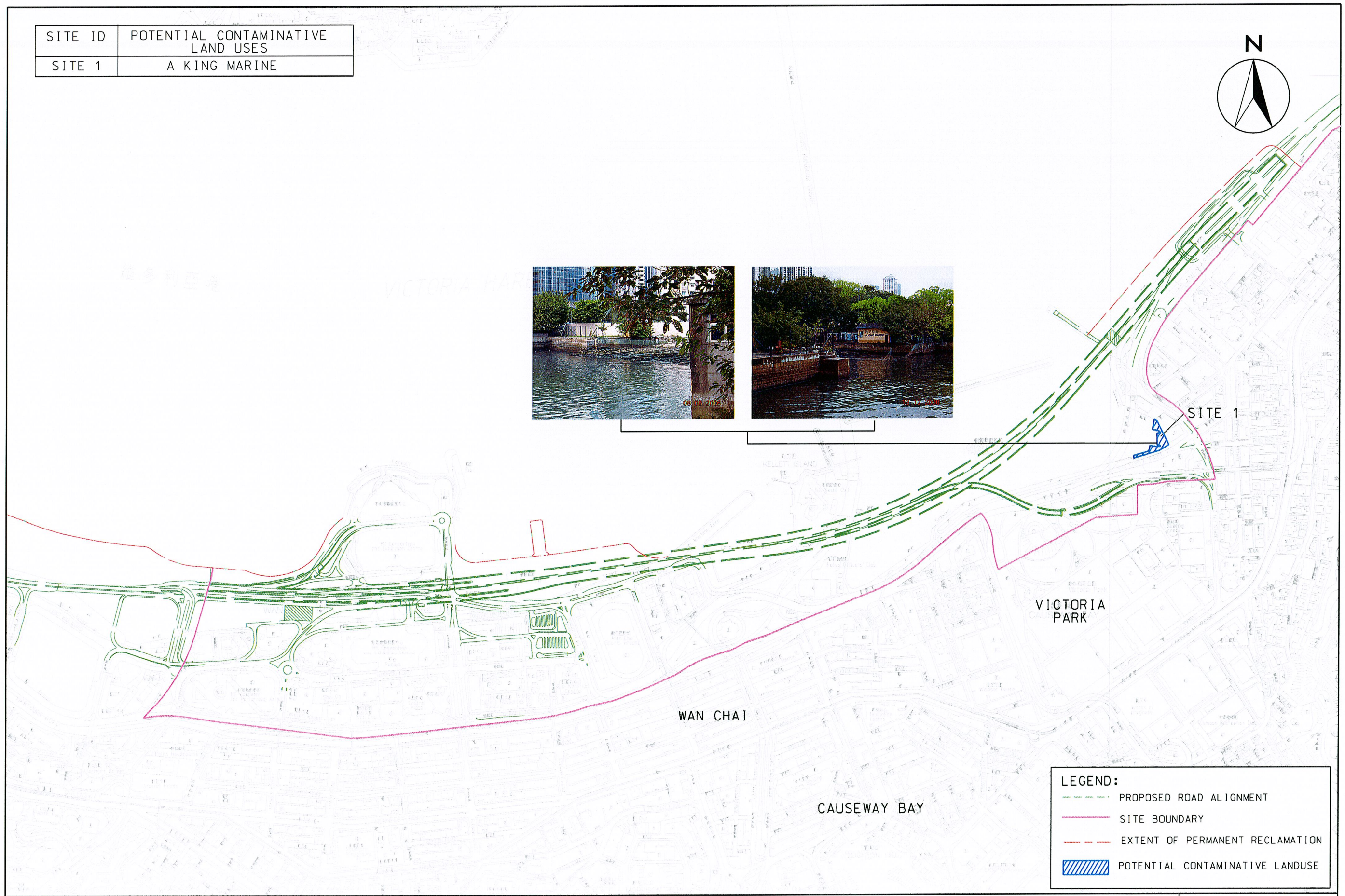
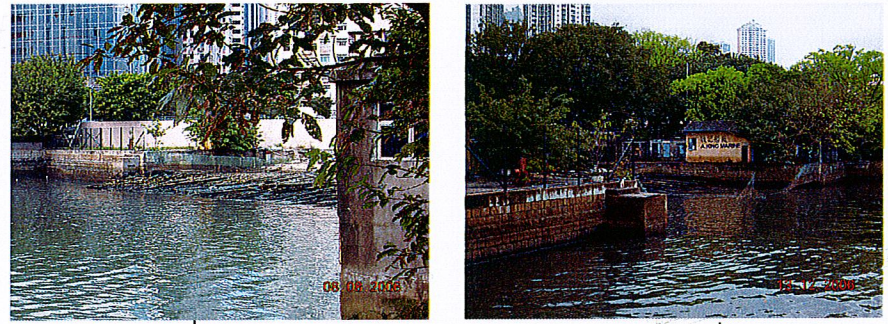


SITE ID	POTENTIAL CONTAMINATIVE LAND USES
SITE 1	A KING MARINE



LEGEND:	
	PROPOSED ROAD ALIGNMENT
	SITE BOUNDARY
	EXTENT OF PERMANENT RECLAMATION
	POTENTIAL CONTAMINATIVE LANDUSE

MAUNSELL AN ACQUISITION OF
WSPARSON

WAN CHAI DEVELOPMENT PHASE II - PLANNING AND ENGINEERING REVIEW
POTENTIAL CONTAMINATIVE LAND USE WITHIN STUDY AREA

FIGURE 7.1