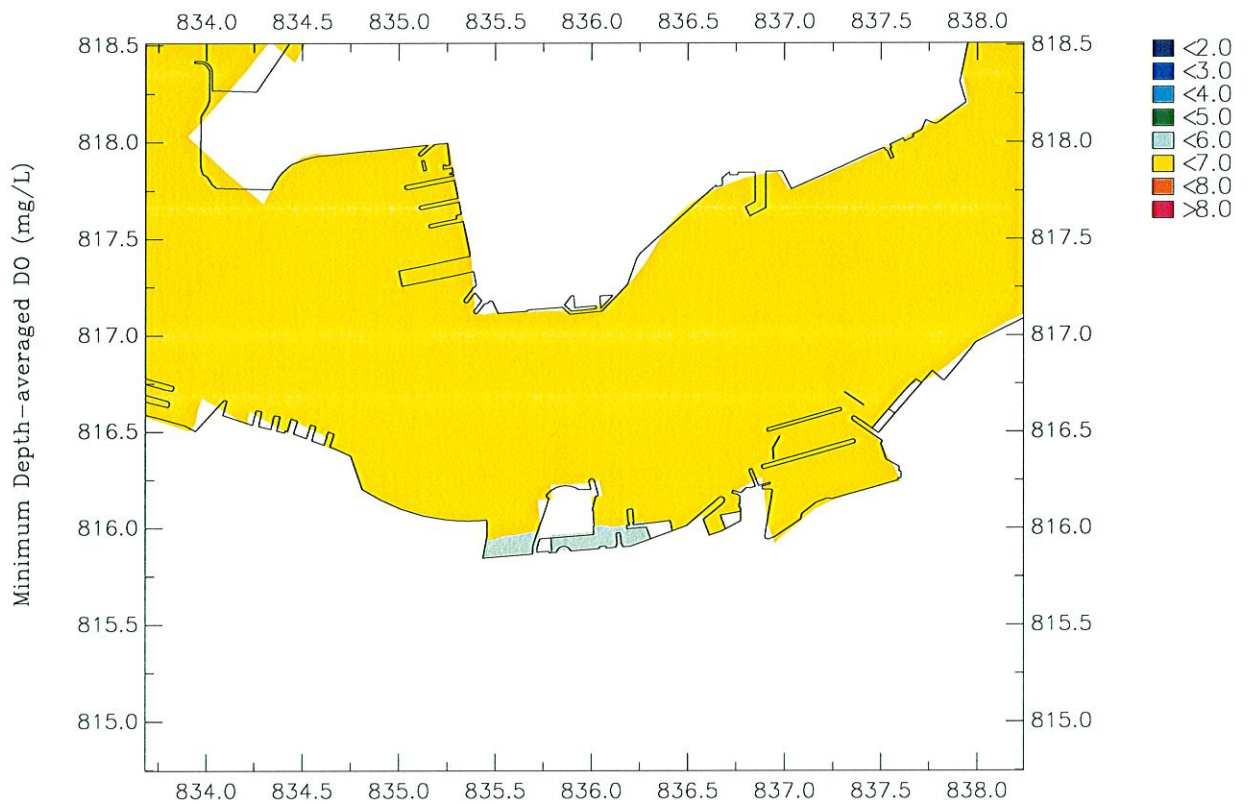
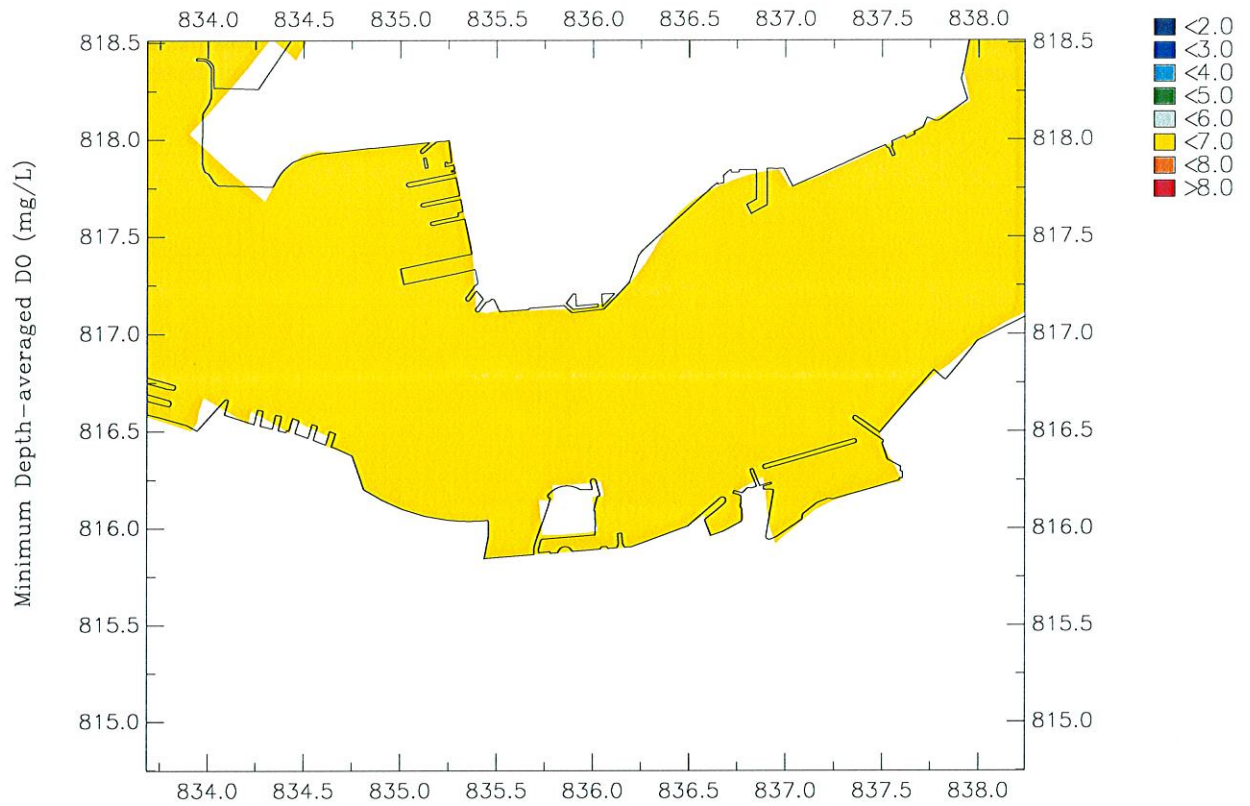


**Appendix 5.10a**  
**Construction Phase Water Quality**  
**Modelling Results –**  
**Scenario 3B - Dry Season**



Agreement No. CE 54/2001 (CE) Wan Chai Development Phase II: Planning And Engineering Review

Minimum Depth-averaged Dissolved Oxygen Concentration

Top: Baseline; Bottom: Interim Construction Scenario 3B

Figure 1.1

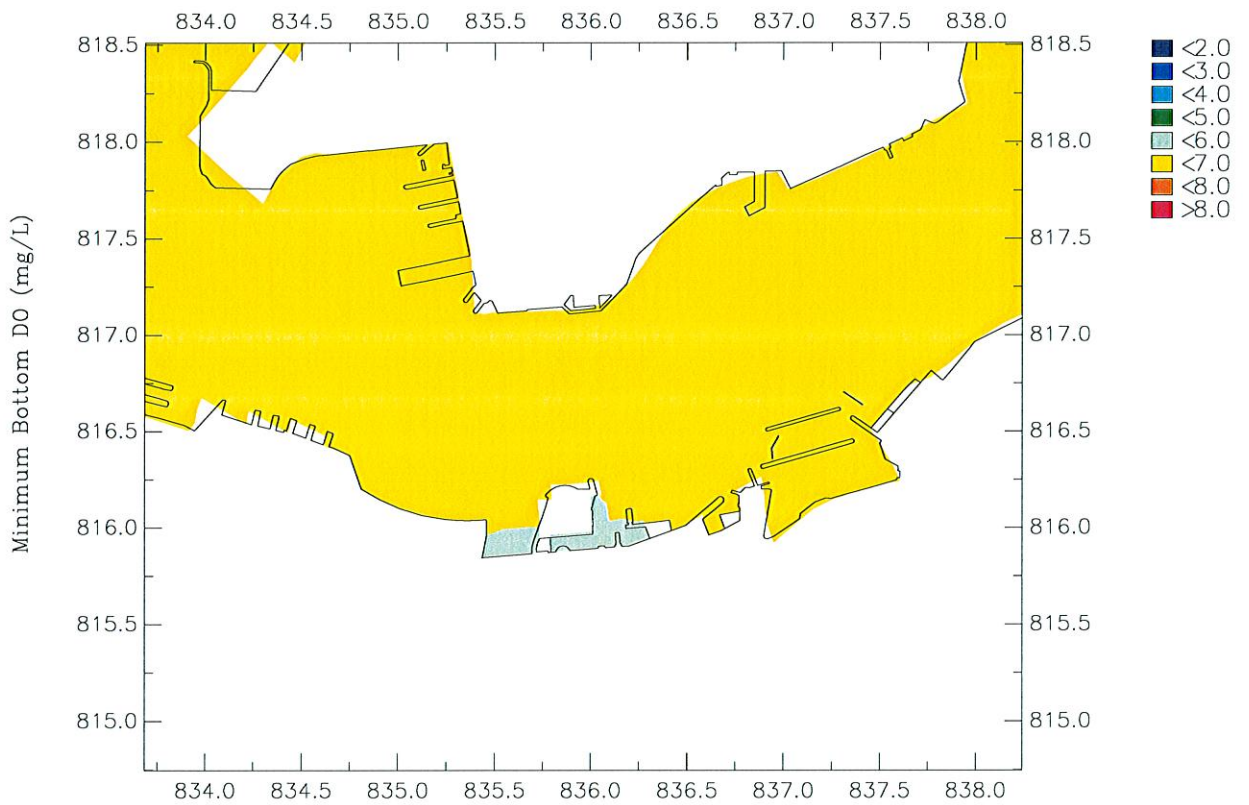
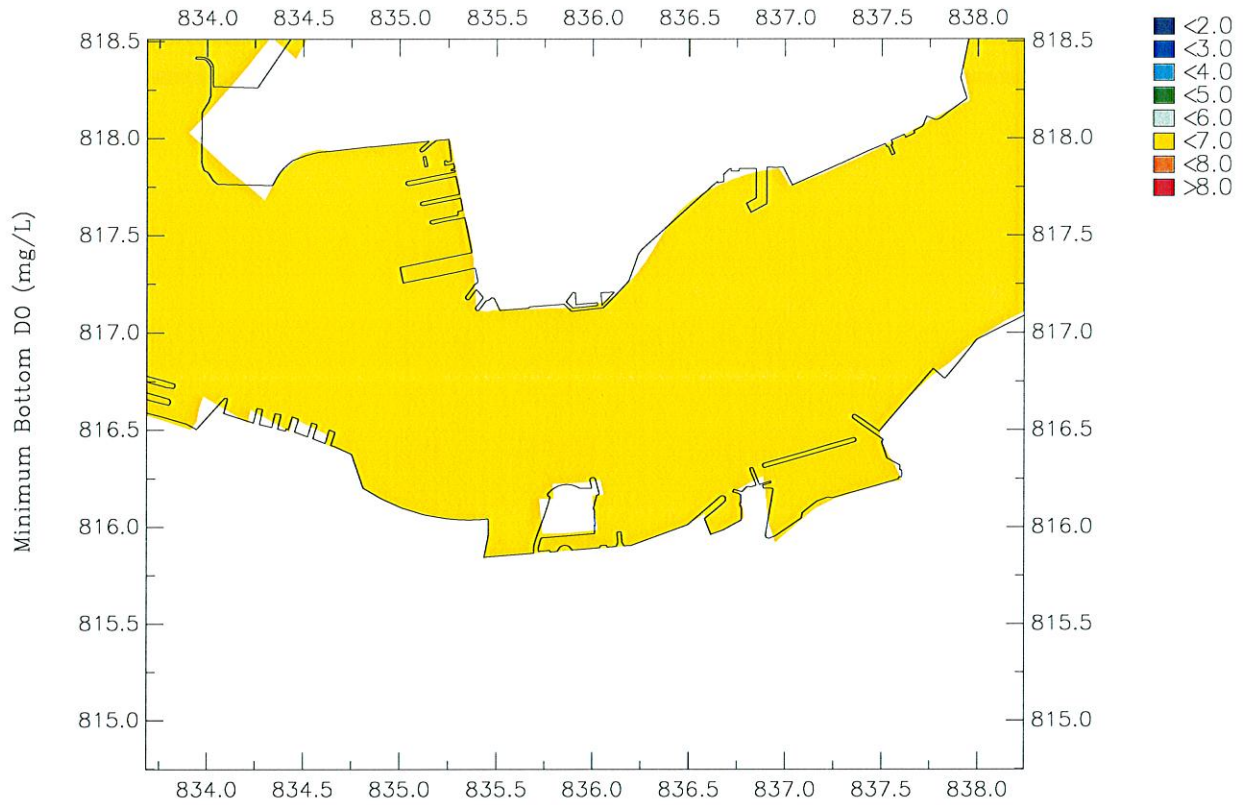
Oct 2006

Dry Season

Maunsell

WQ/Detailled/2009/Plot

MIN-DA-DO.ssn



Agreement No. CE 54/2001 (CE) Wan Chai Development Phase II: Planning And Engineering Review

Minimum Bottom Dissolved Oxygen Concentration

Top: Baseline; Bottom: Interim Construction Scenario 3B

Figure 2.1

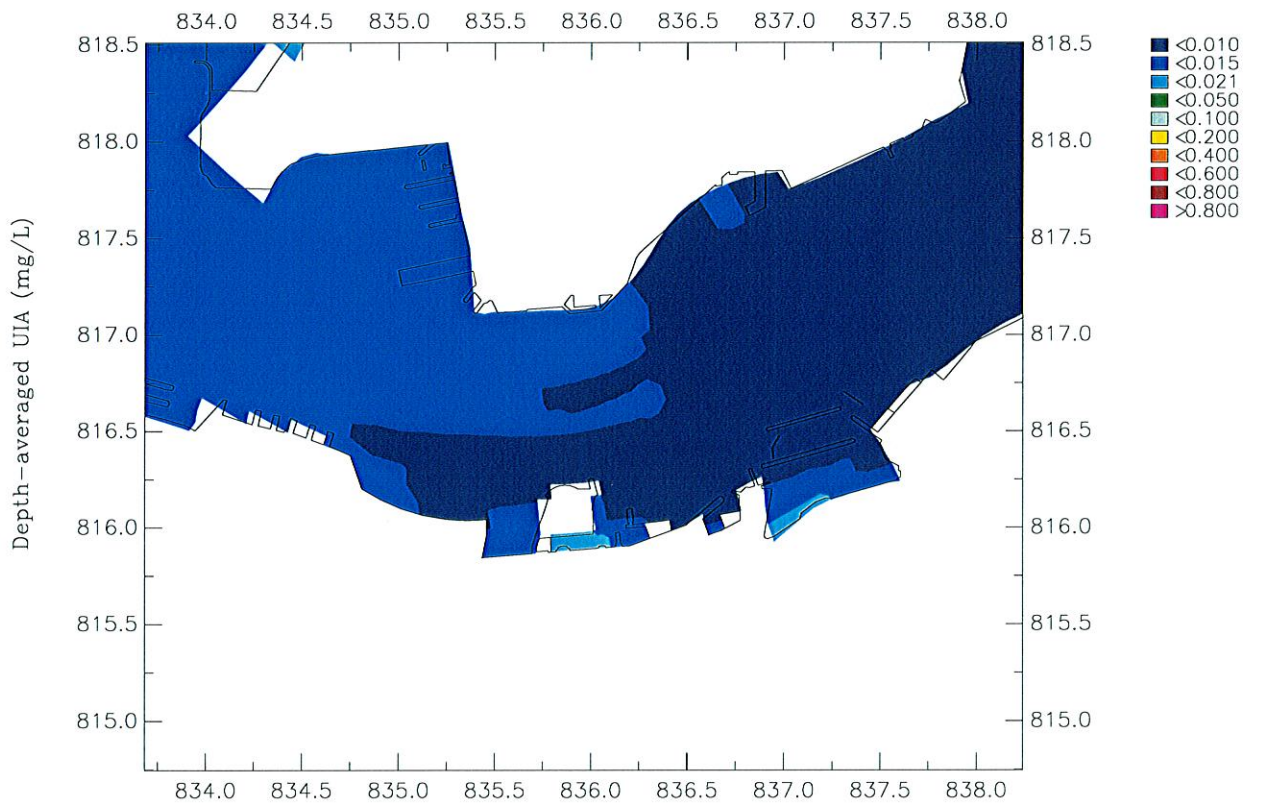
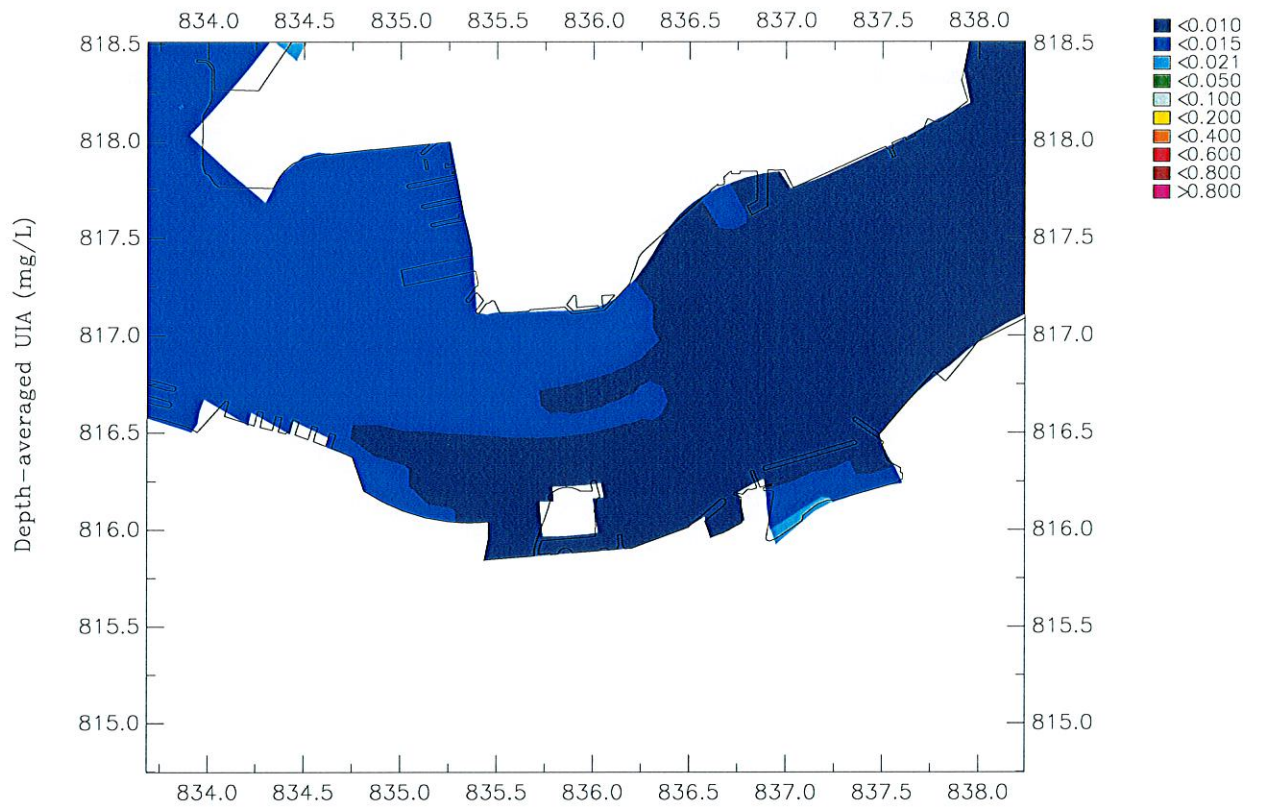
Oct 2006

Dry Season

Maunsell

WQ/Detailed/2009/Plot

MIN-Bottom-DO.ssn



Agreement No. CE 54/2001 (CE) Wan Chai Development Phase II: Planning And Engineering Review

Depth-averaged Unionised Ammonia Concentration

Top: Baseline; Bottom: Interim Construction Scenario 3B

Figure 3.1

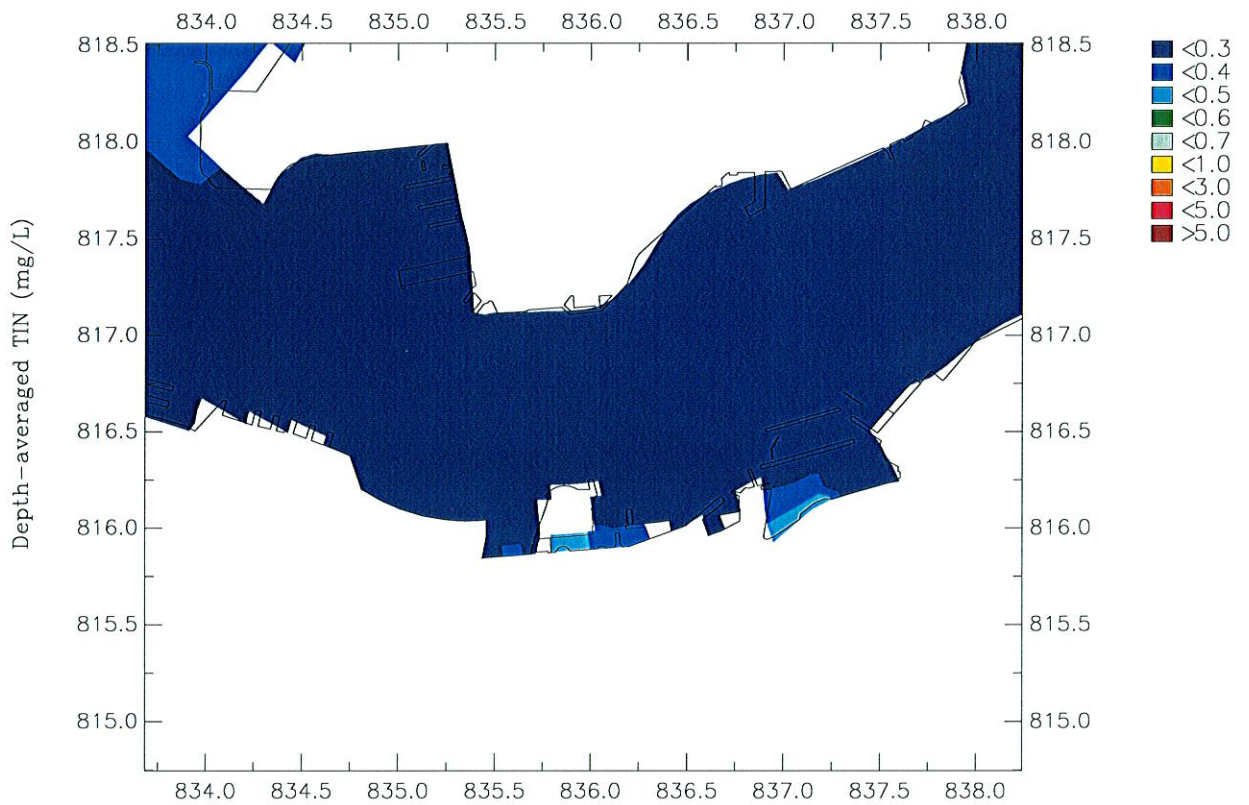
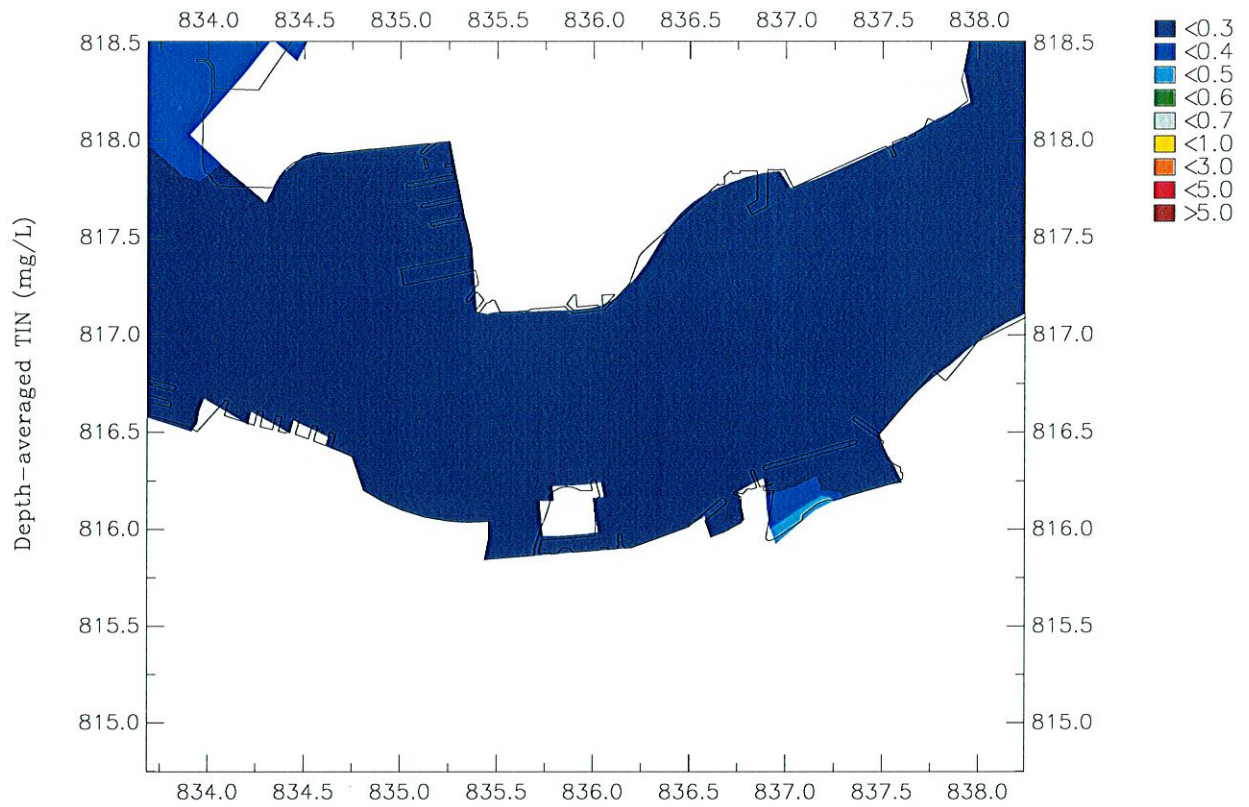
Oct 2006

Dry Season

Maunsell

WQ/Detailed/2009/Plot

DA-UIA.ssn



Agreement No. CE 54/2001 (CE) Wan Chai Development Phase II: Planning And Engineering Review

Depth-averaged Total Inorganic Nitrogen Concentration

Top: Baseline; Bottom: Interim Construction Scenario 3B

Figure 4.1

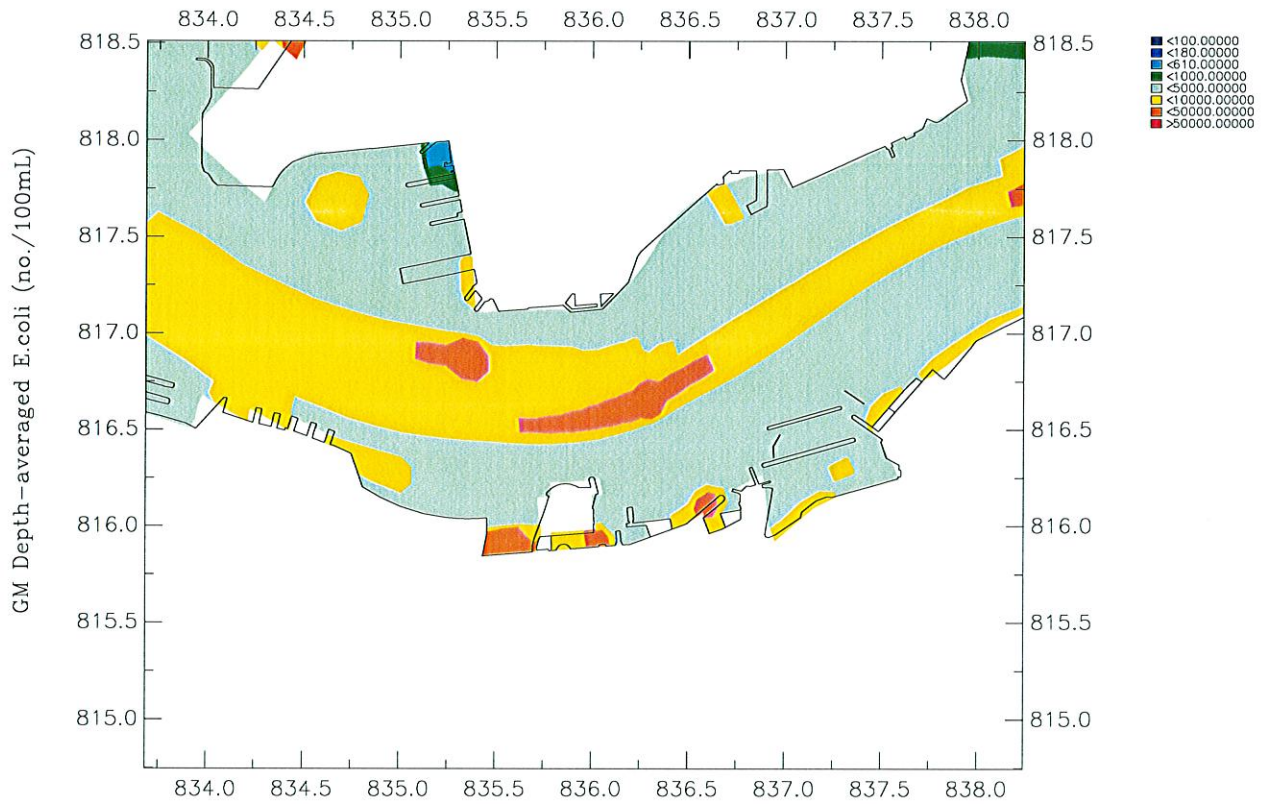
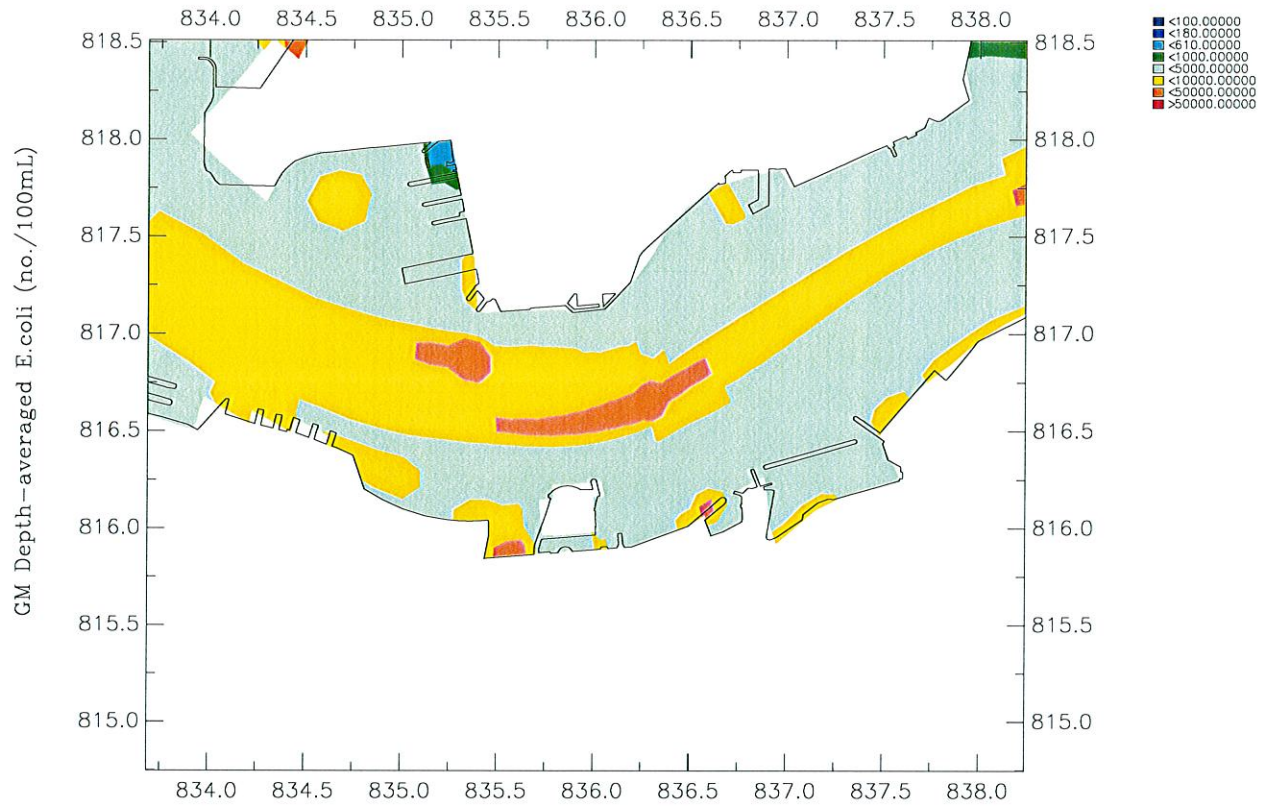
Oct 2006

Dry Season

Maunsell

WQ/Detailed/2009/Plot

DA-TIN.ssn



Agreement No. CE 54/2001 (CE) Wan Chai Development Phase II: Planning And Engineering Review

Geometric Mean Depth-averaged E.coli Concentration

Top: Baseline; Bottom: Interim Construction Scenario 3B

Figure 5.1

Oct 2006

Dry Season

Maunsell

WQ/Detailed/2009/Plot

GM-Ecoli.ssn