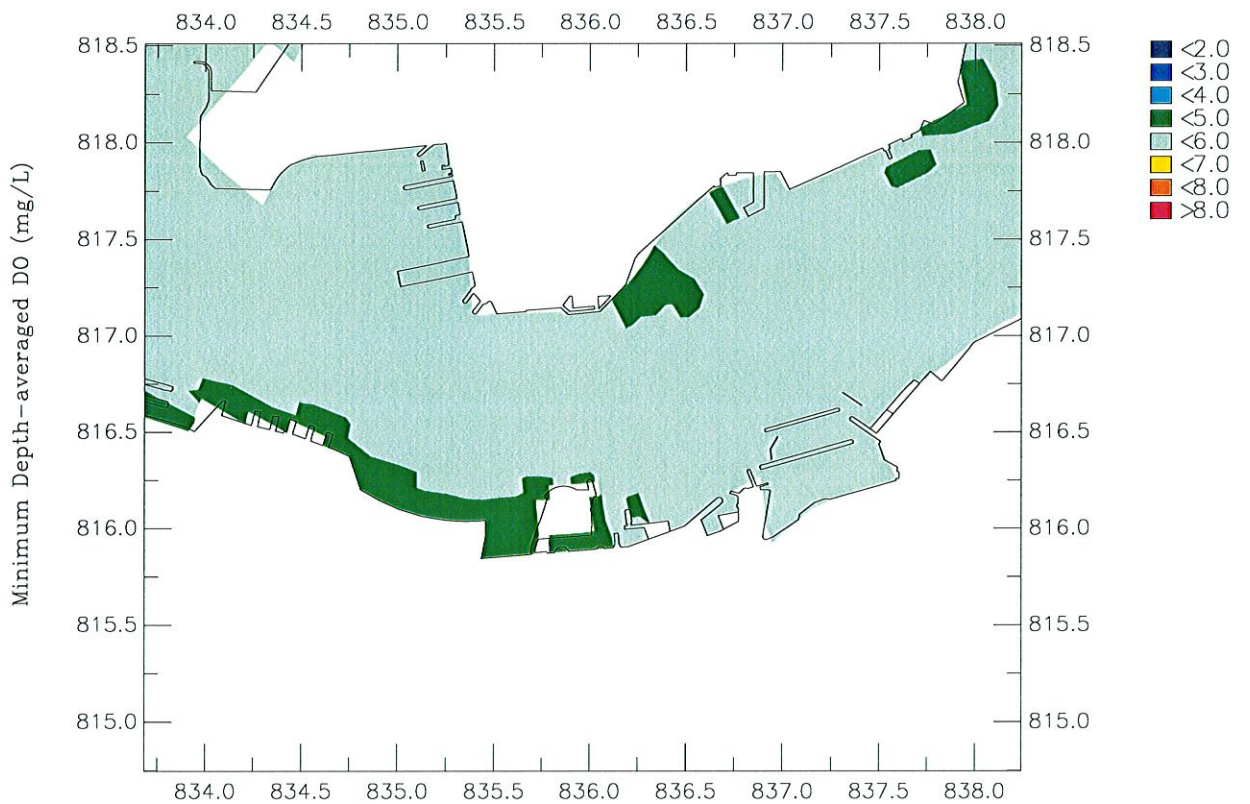
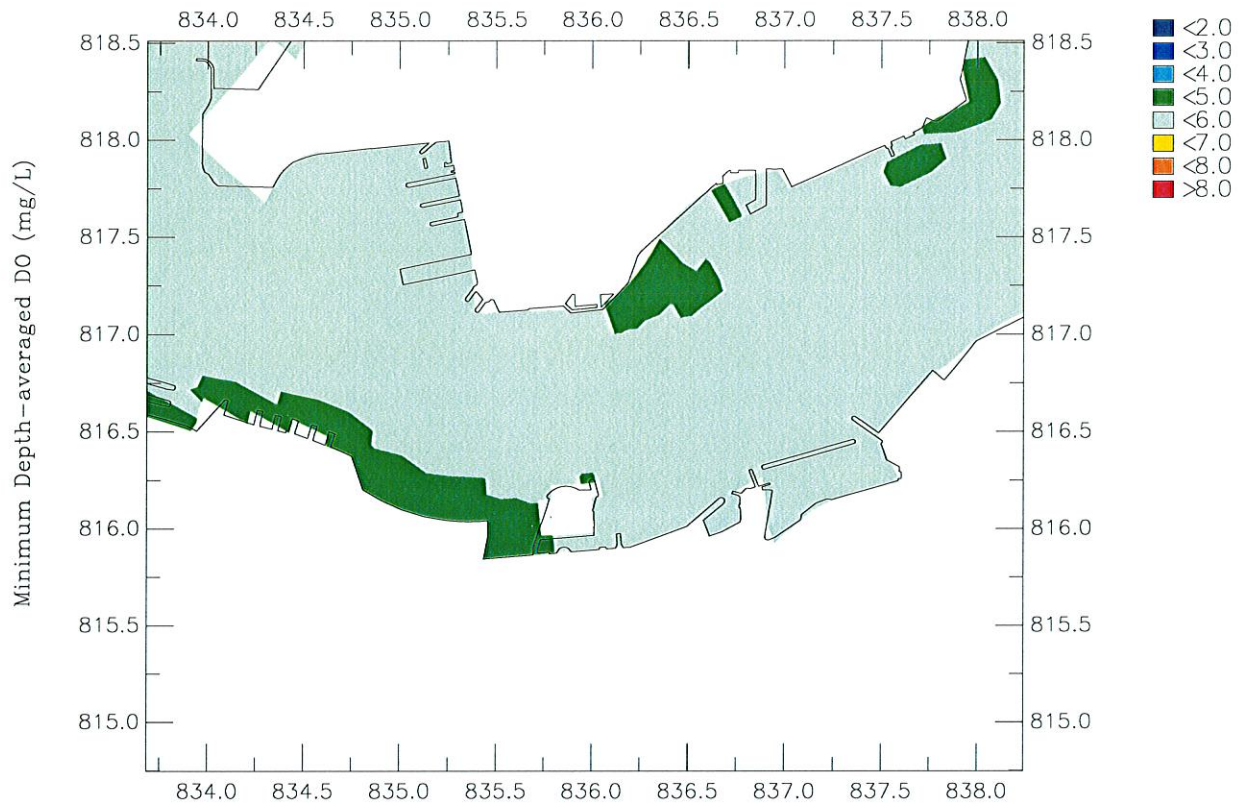


Appendix 5.10b
Construction Phase Water Quality
Modelling Results –
Scenario 3B - Wet Season



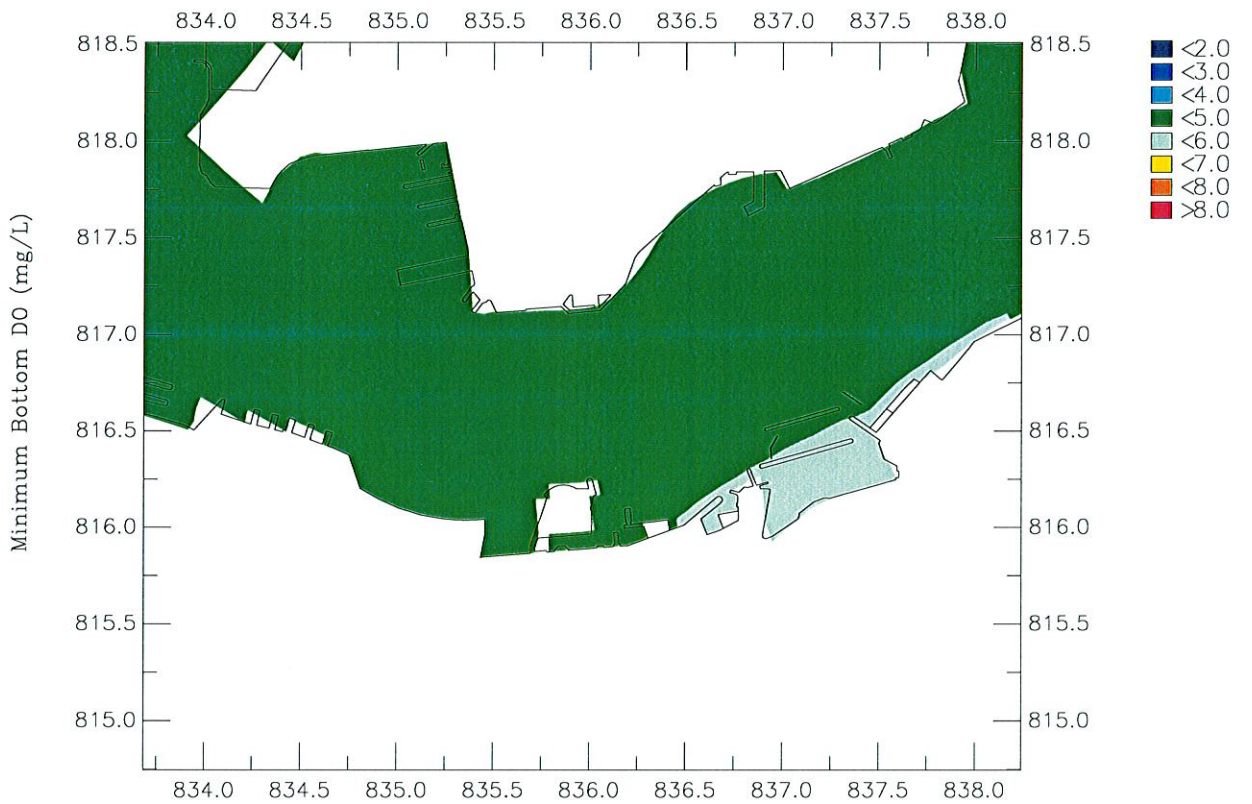
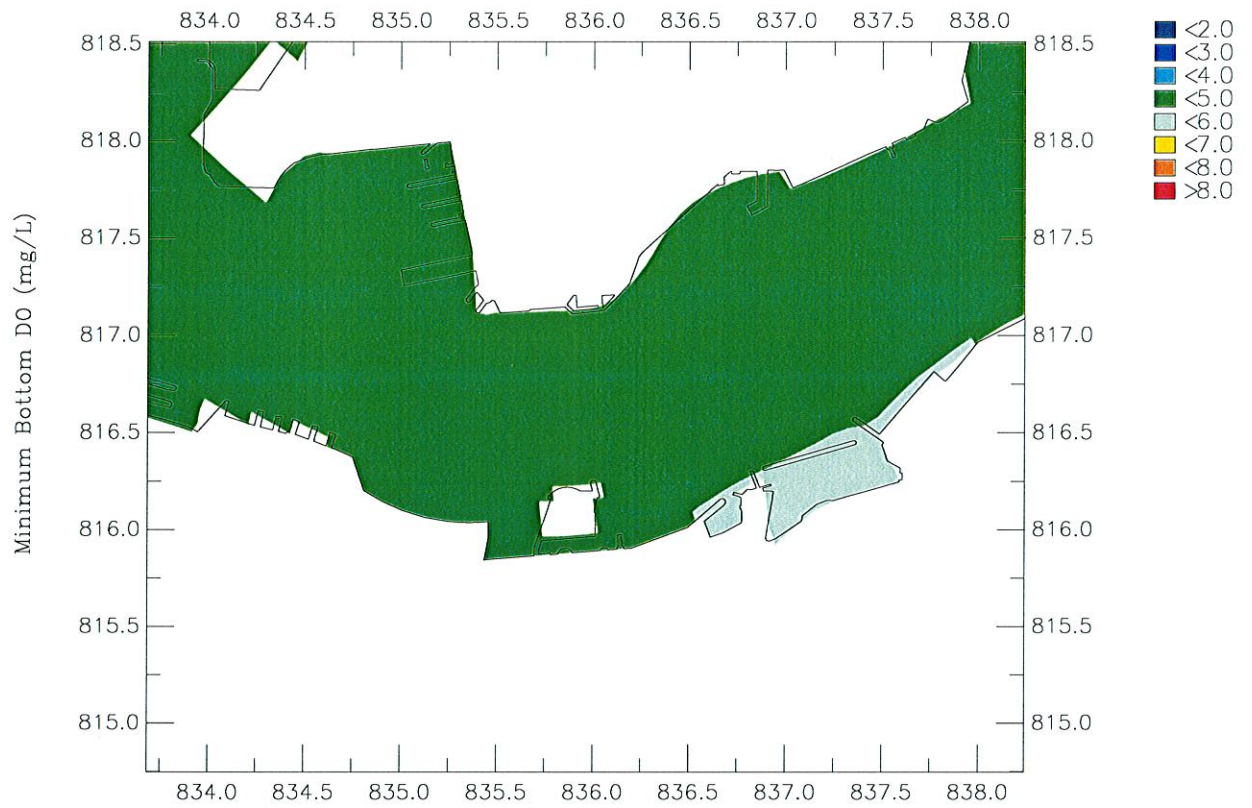
Agreement No. CE 54/2001 (CE) Wan Chai Development Phase II: Planning And Engineering Review
 Minimum Depth-averaged Dissolved Oxygen Concentration
 Top: Baseline; Bottom: Interim Construction Scenario 3B

Figure 1.2 Oct 2006

Wet Season

Maunsell

WQ/Detailed/2009/Plot MIN-DA-DO.ssn



Agreement No. CE 54/2001 (CE) Wan Chai Development Phase II: Planning And Engineering Review

Minimum Bottom Dissolved Oxygen Concentration

Top: Baseline; Bottom: Interim Construction Scenario 3B

Figure 2.2

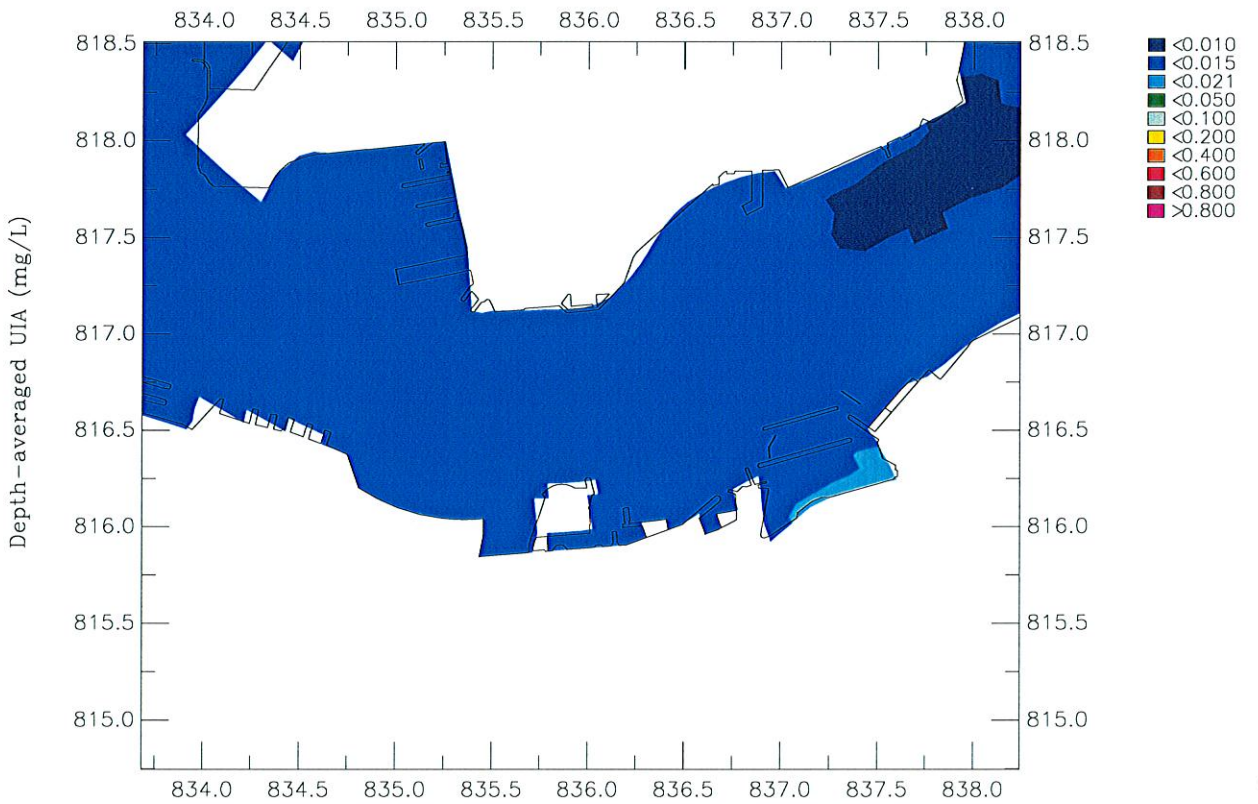
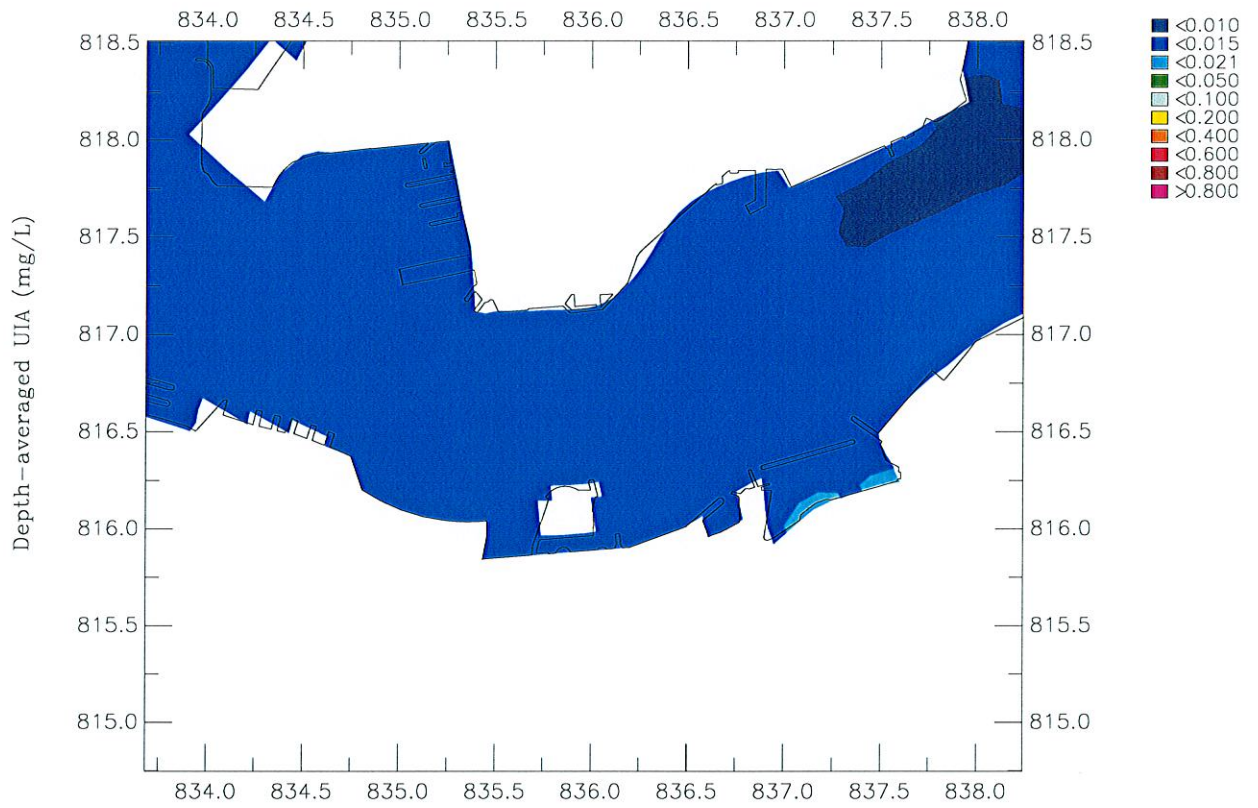
Oct 2006

Wet Season

Maunsell

WQ/Detailed/2009/Plot

MIN-Bottom-DO.ssn



Agreement No. CE 54/2001 (CE) Wan Chai Development Phase II: Planning And Engineering Review

Depth-averaged Unionised Ammonia Concentration

Top: Baseline; Bottom: Interim Construction Scenario 3B

Figure 3.2

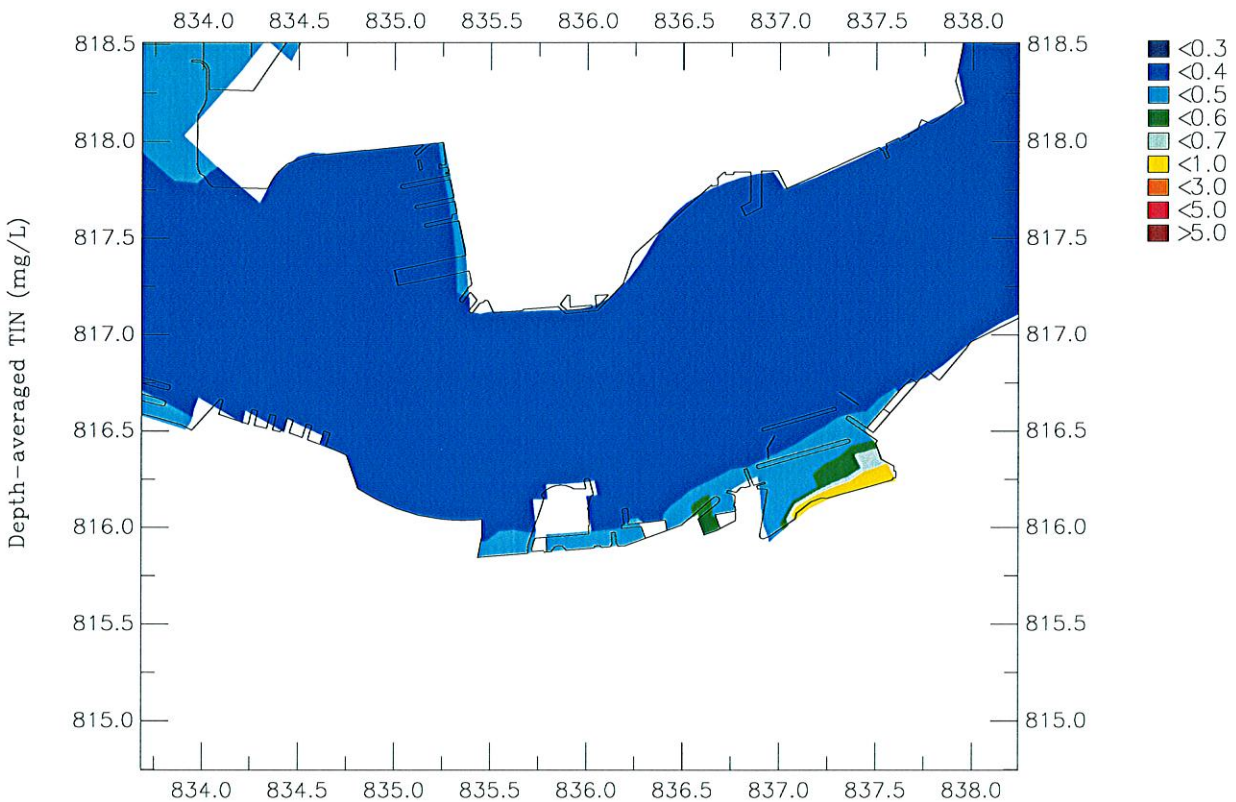
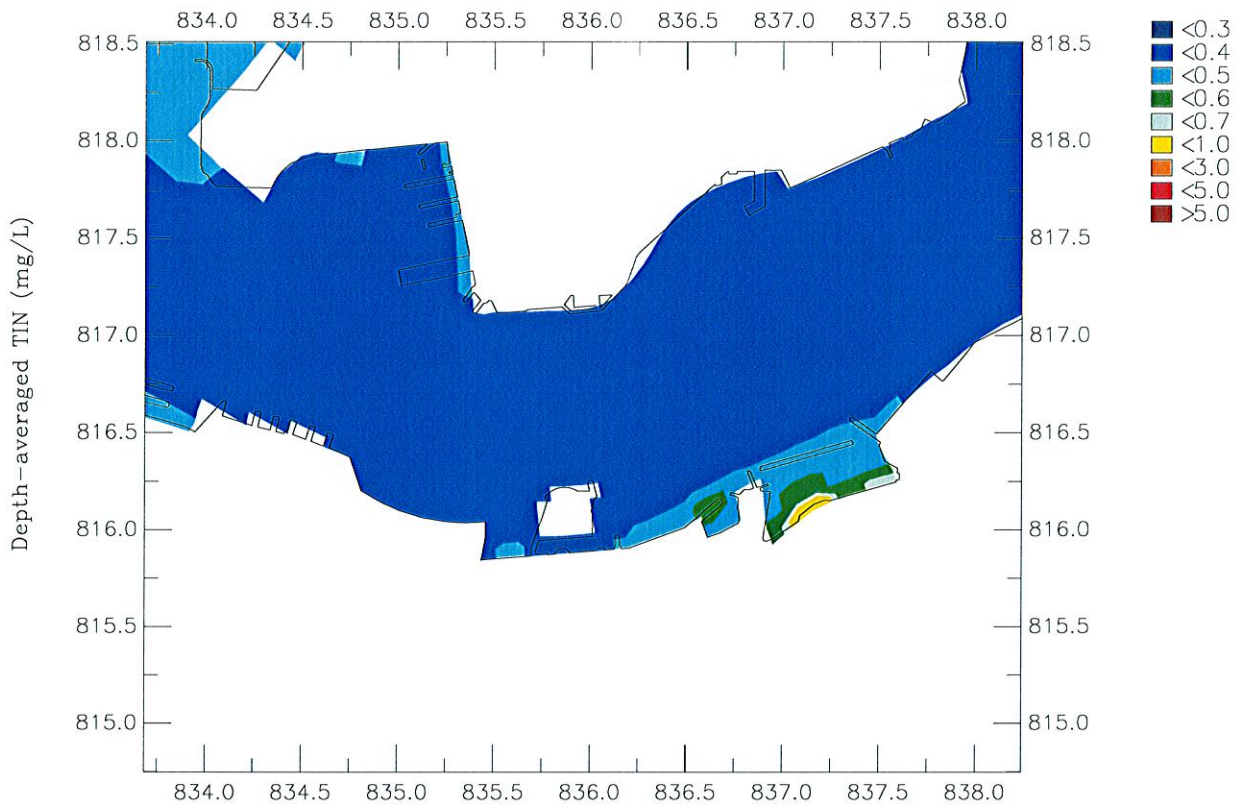
Oct 2006

Wet Season

Maunsell

WQ/Detailed/2009/Plot

DA-UIA.ssn



Agreement No. CE 54/2001 (CE) Wan Choi Development Phase II: Planning And Engineering Review

Depth-averaged Total Inorganic Nitrogen Concentration

Top: Baseline; Bottom: Interim Construction Scenario 3B

Figure 4.2

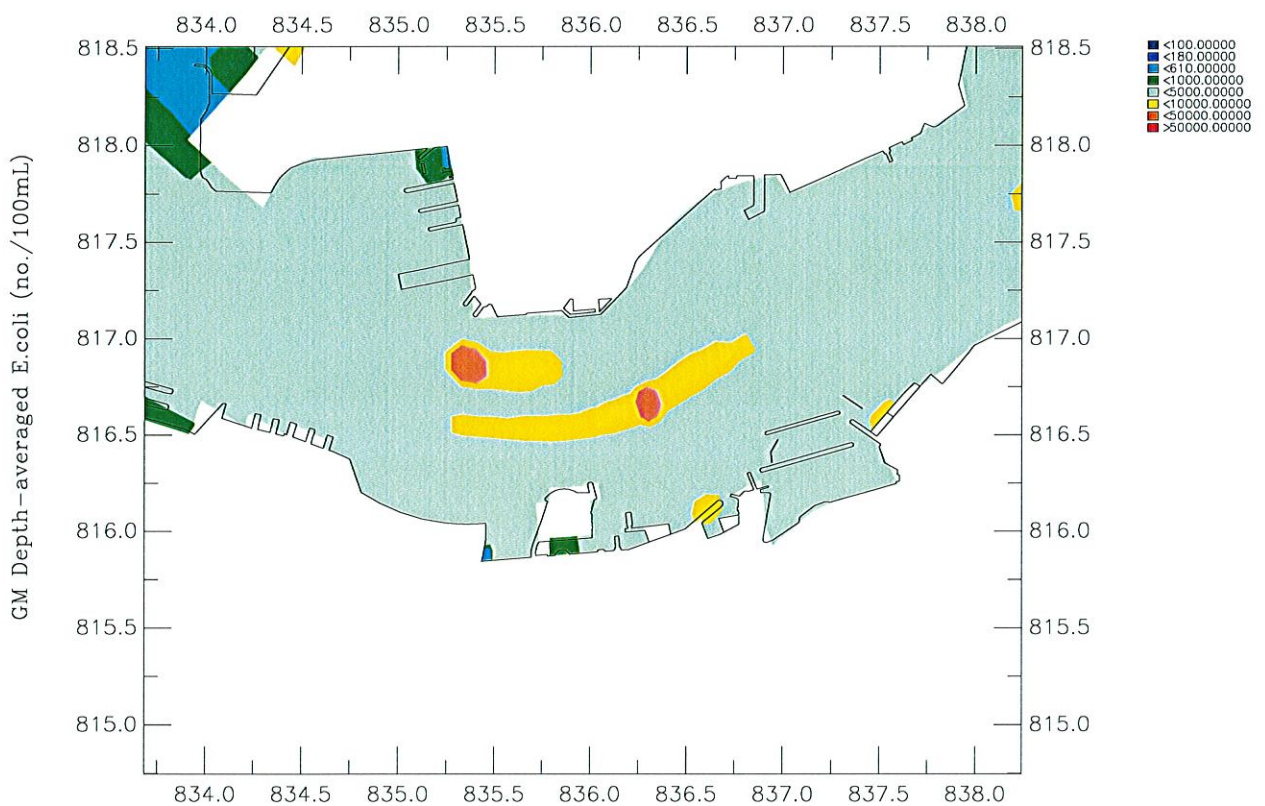
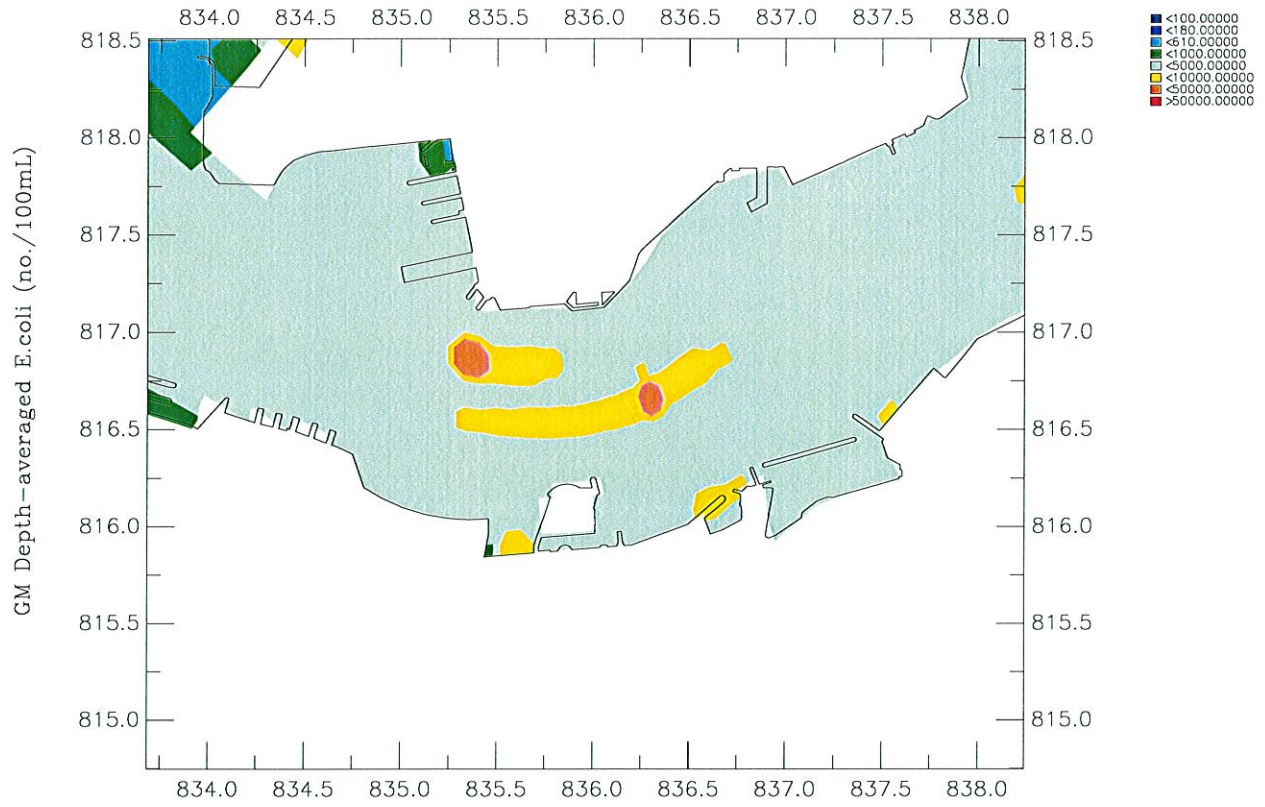
Oct 2006

Wet Season

Maunsell

WQ/Detailed/2009/Plot

DA-TIN.ssn



Agreement No. CE 54/2001 (CE) Wan Chai Development Phase II: Planning And Engineering Review Geometric Mean Depth-averaged E.coli Concentration Top: Baseline; Bottom: Interim Construction Scenario 3B	Figure 5.2	Oct 2006
	Wet Season	
Maunsell	WQ/Detailed/2009/Plot	GM-Ecoli.ssn