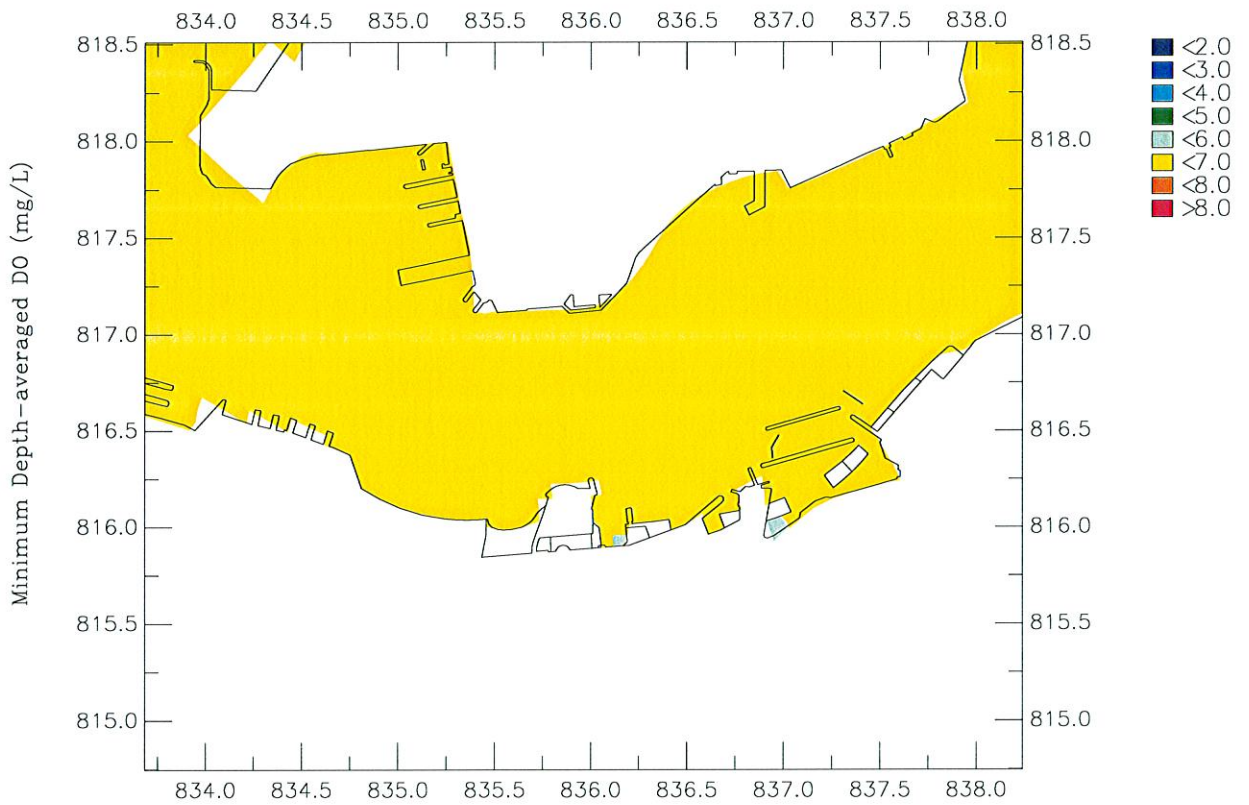
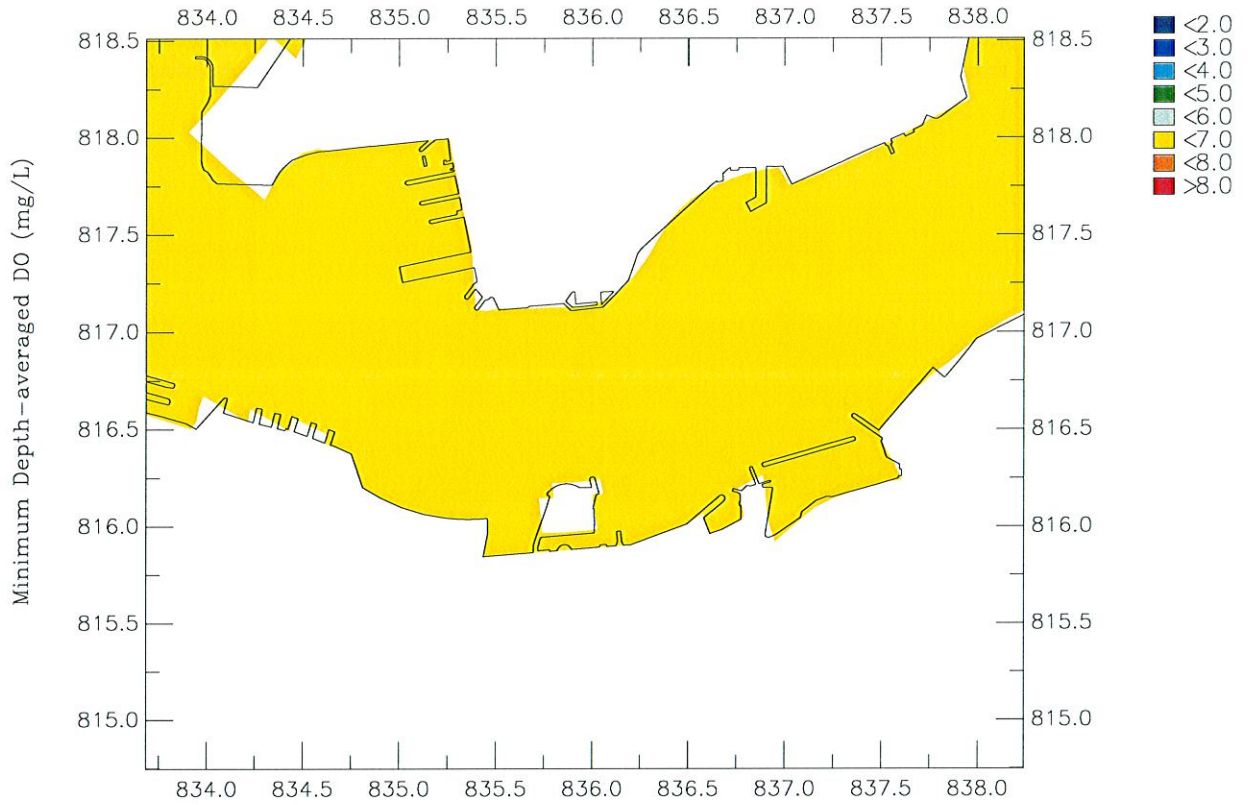


**Appendix 5.10c**  
**Construction Phase Water Quality**  
**Modelling Results –**  
**Scenario 3C - Dry Season**



Agreement No. CE 54/2001 (CE) Wan Chai Development Phase II: Planning And Engineering Review  
 Minimum Depth-averaged Dissolved Oxygen Concentration  
 Top: Baseline; Bottom: Interim Construction Scenario 3C

Figure 1.3

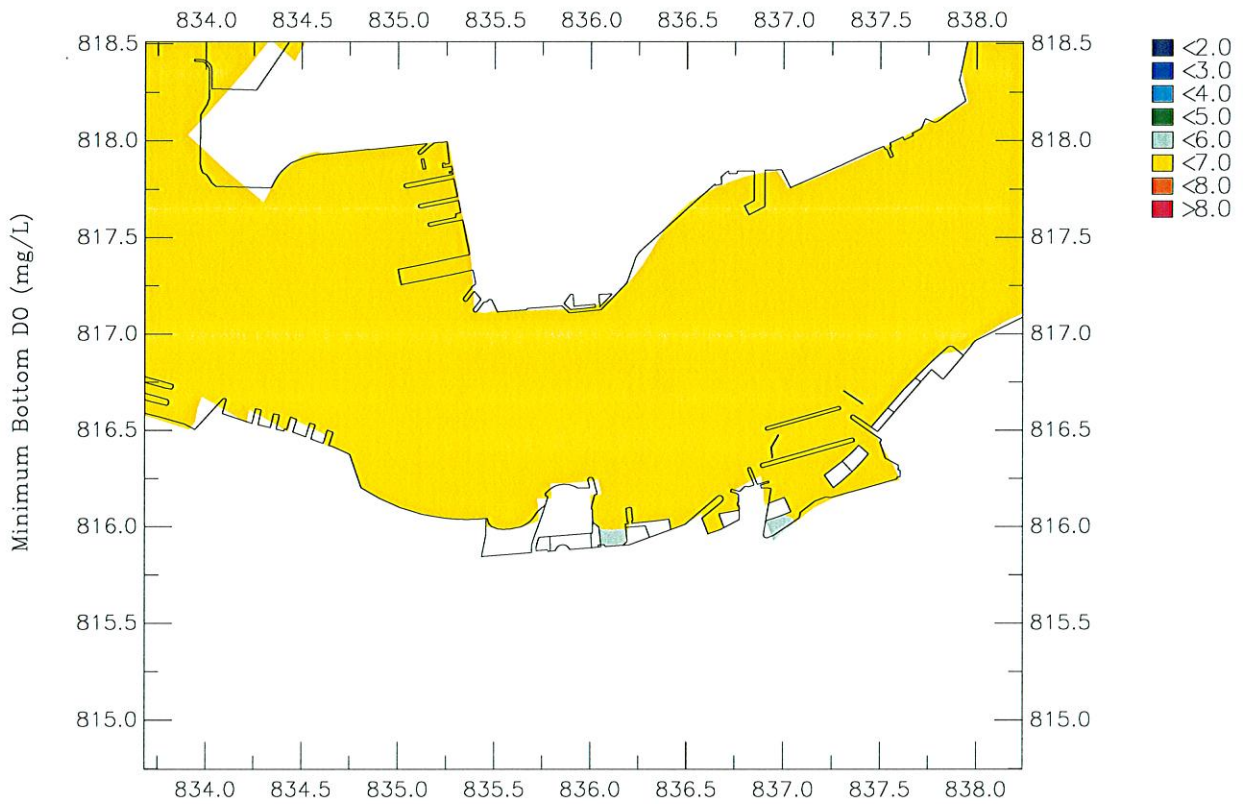
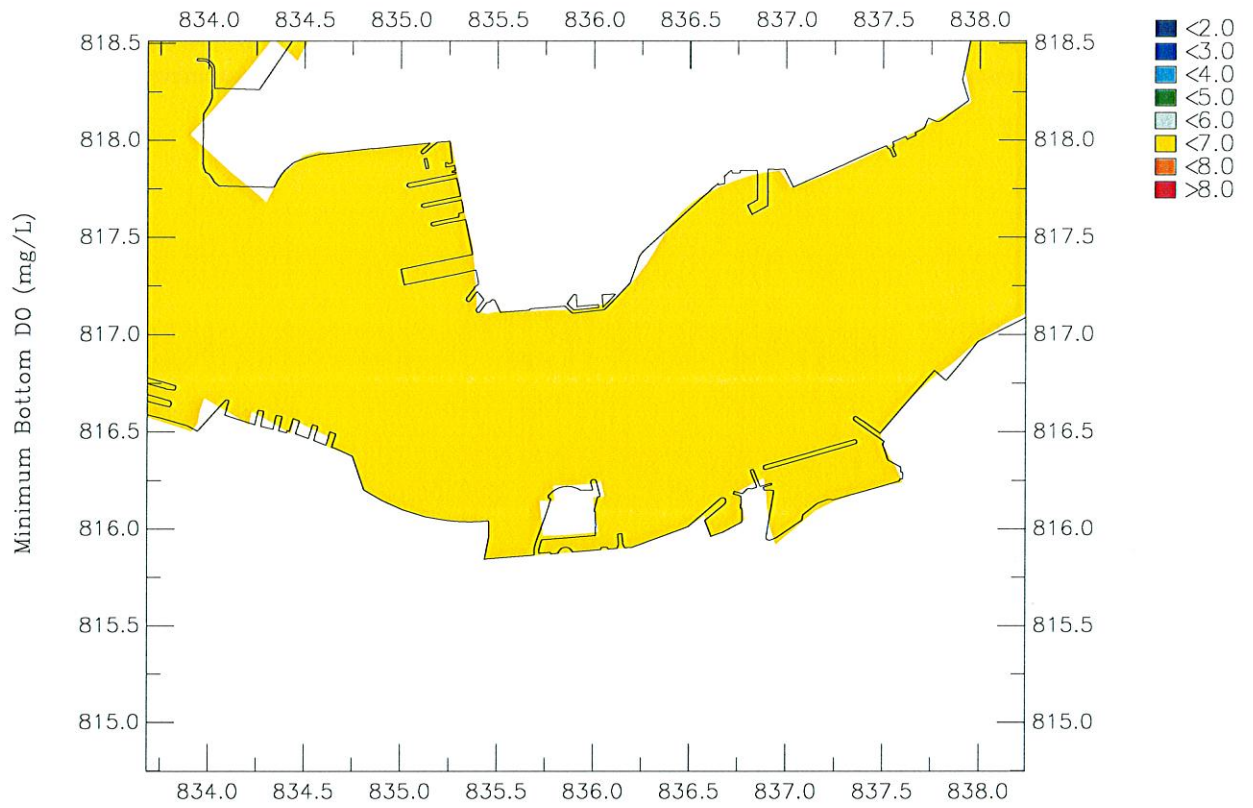
Oct 2006

Dry Season

Maunsell

WQ/Detailed/2009/Plot

MIN-DA-DO.ssn



Agreement No. CE 54/2001 (CE) Wan Choi Development Phase II: Planning And Engineering Review

Minimum Bottom Dissolved Oxygen Concentration

Top: Baseline; Bottom: Interim Construction Scenario 3C

Figure 2.3

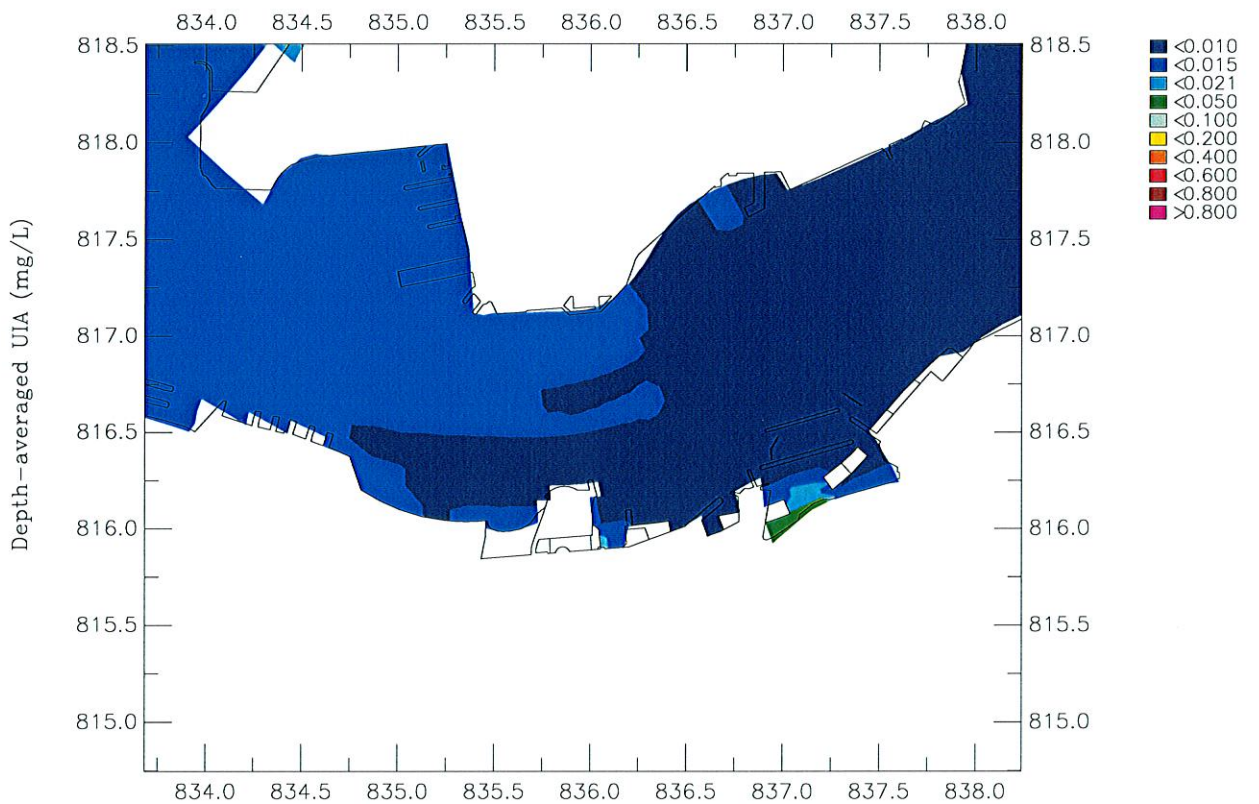
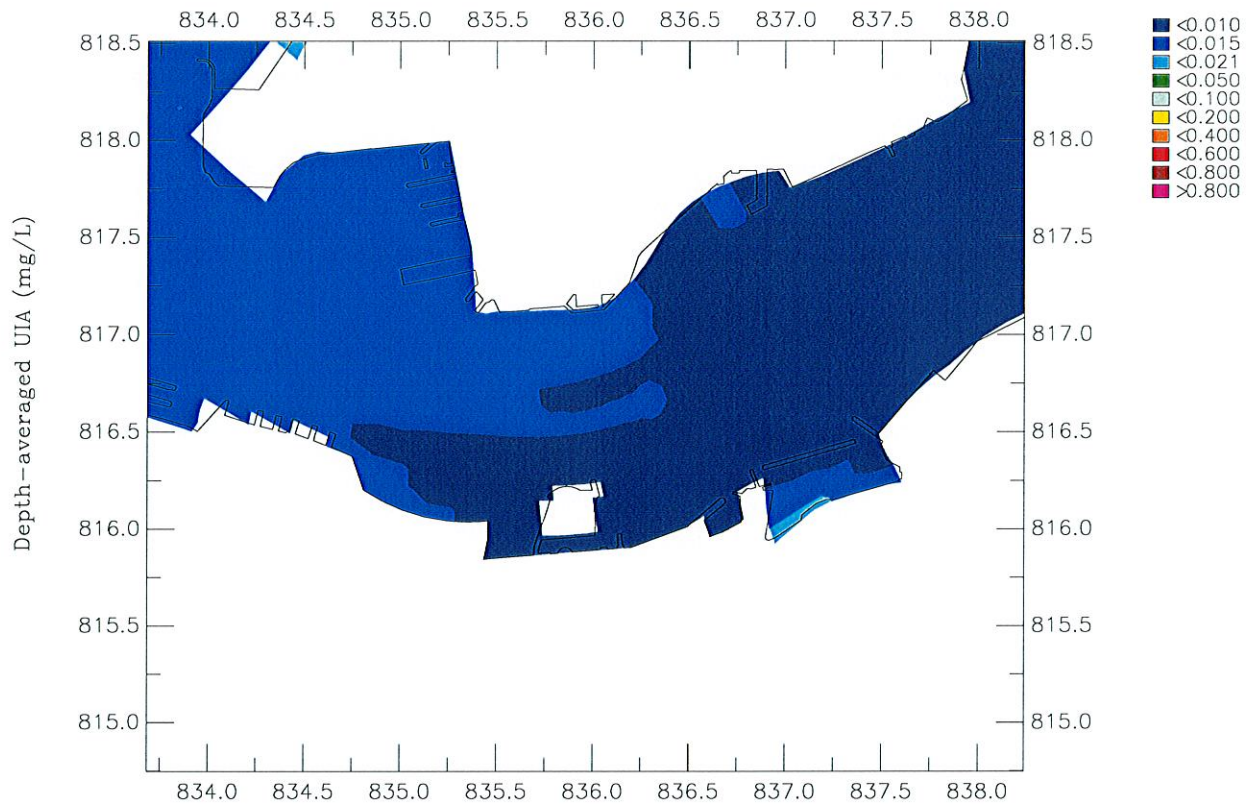
Oct 2006

Dry Season

Maunsell

WQ/Detailed/2009/Plot

MIN-Bottom-DO.ssn



Agreement No. CE 54/2001 (CE) Wan Chai Development Phase II: Planning And Engineering Review

Depth-averaged Unionised Ammonia Concentration

Top: Baseline; Bottom: Interim Construction Scenario 3C

Figure 3.3

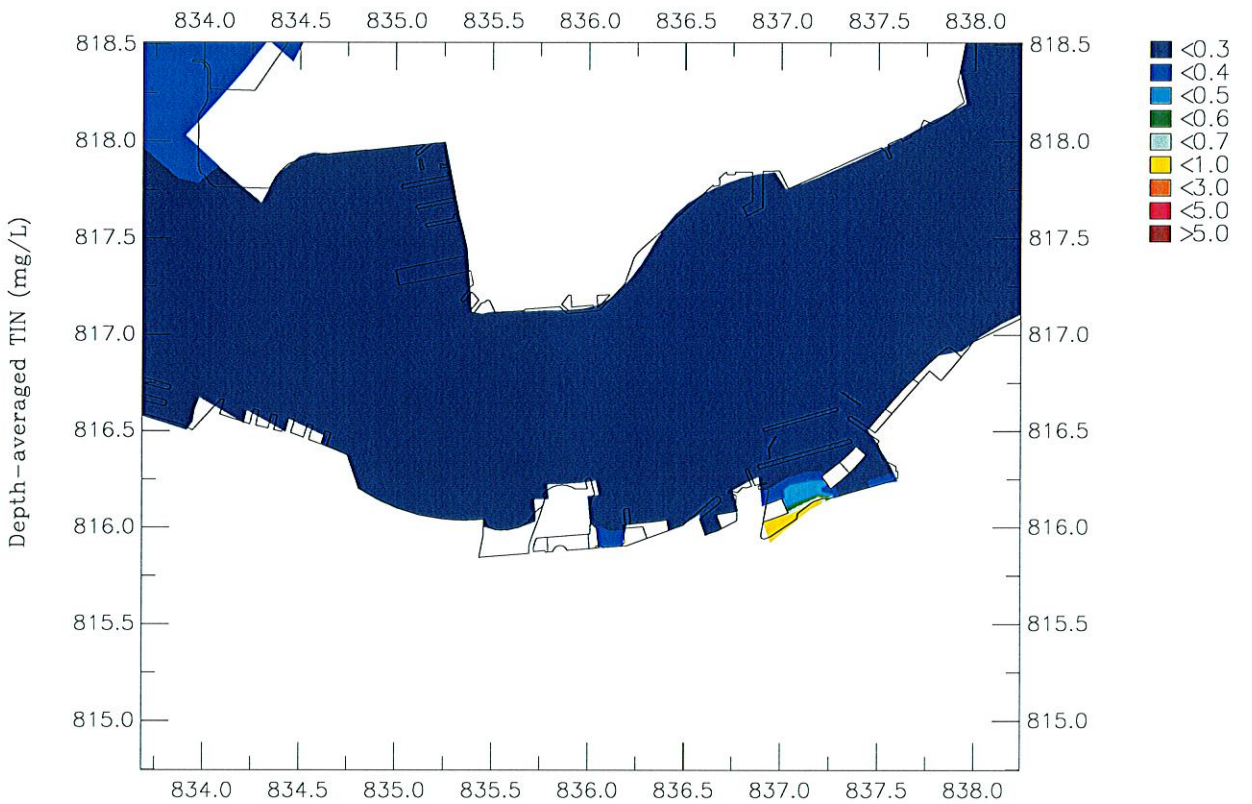
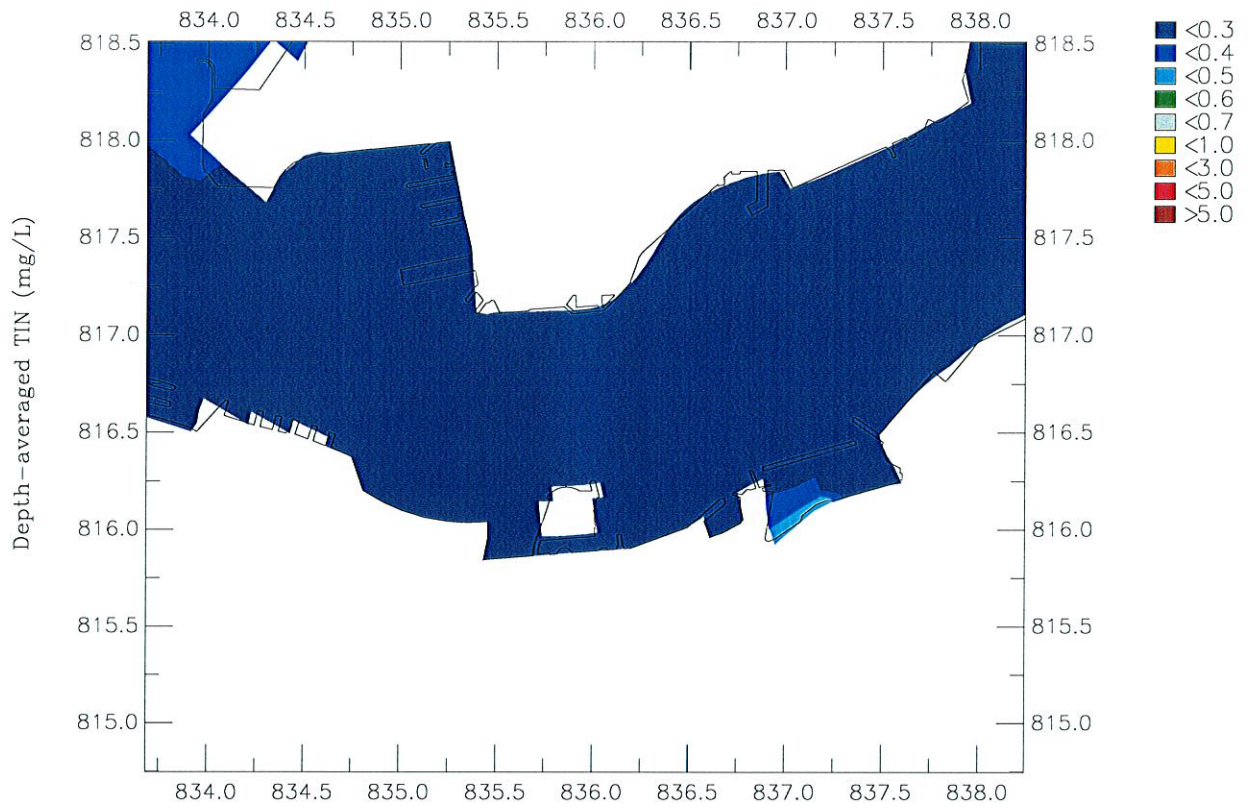
Oct 2006

Dry Season

Maunsell

WQ/Detailed/2009/Plot

DA-UIA.ssn



Agreement No. CE 54/2001 (CE) Wan Chai Development Phase II: Planning And Engineering Review  
 Depth-averaged Total Inorganic Nitrogen Concentration  
 Top: Baseline; Bottom: Interim Construction Scenario 3C

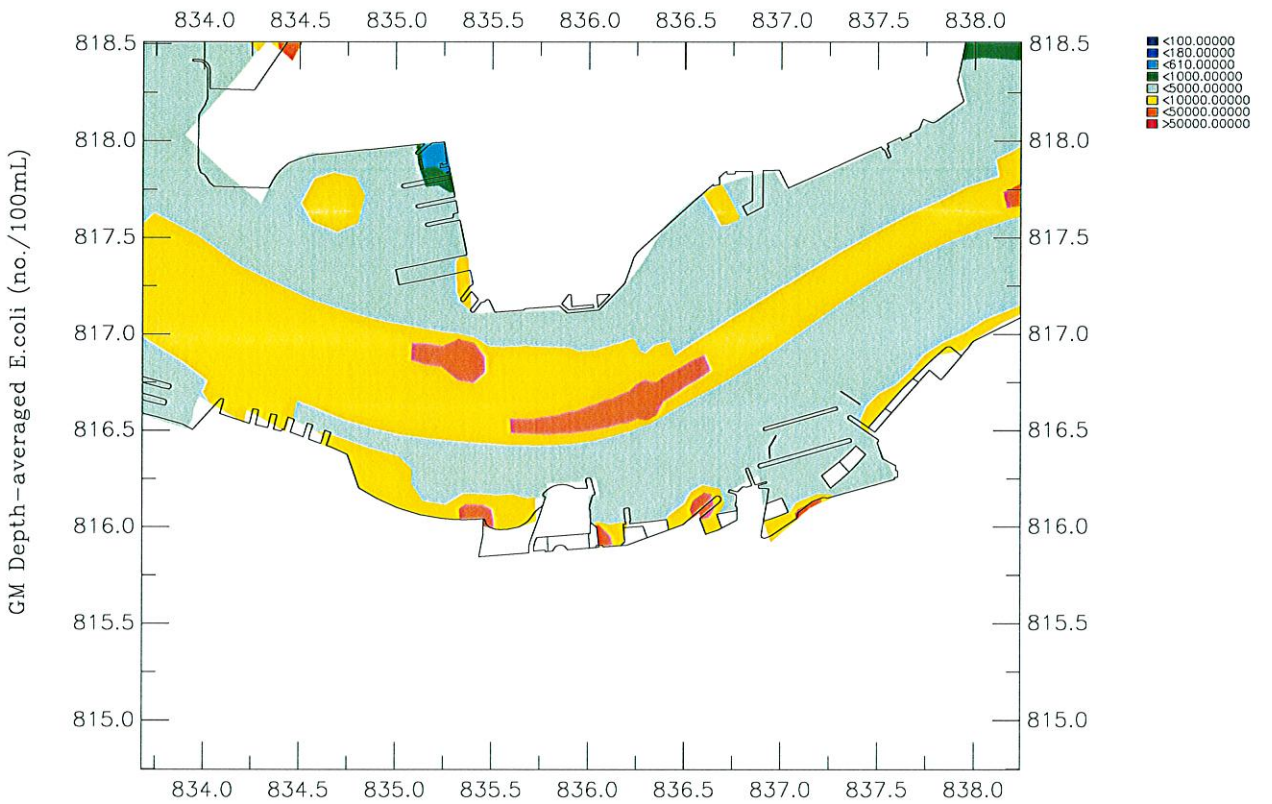
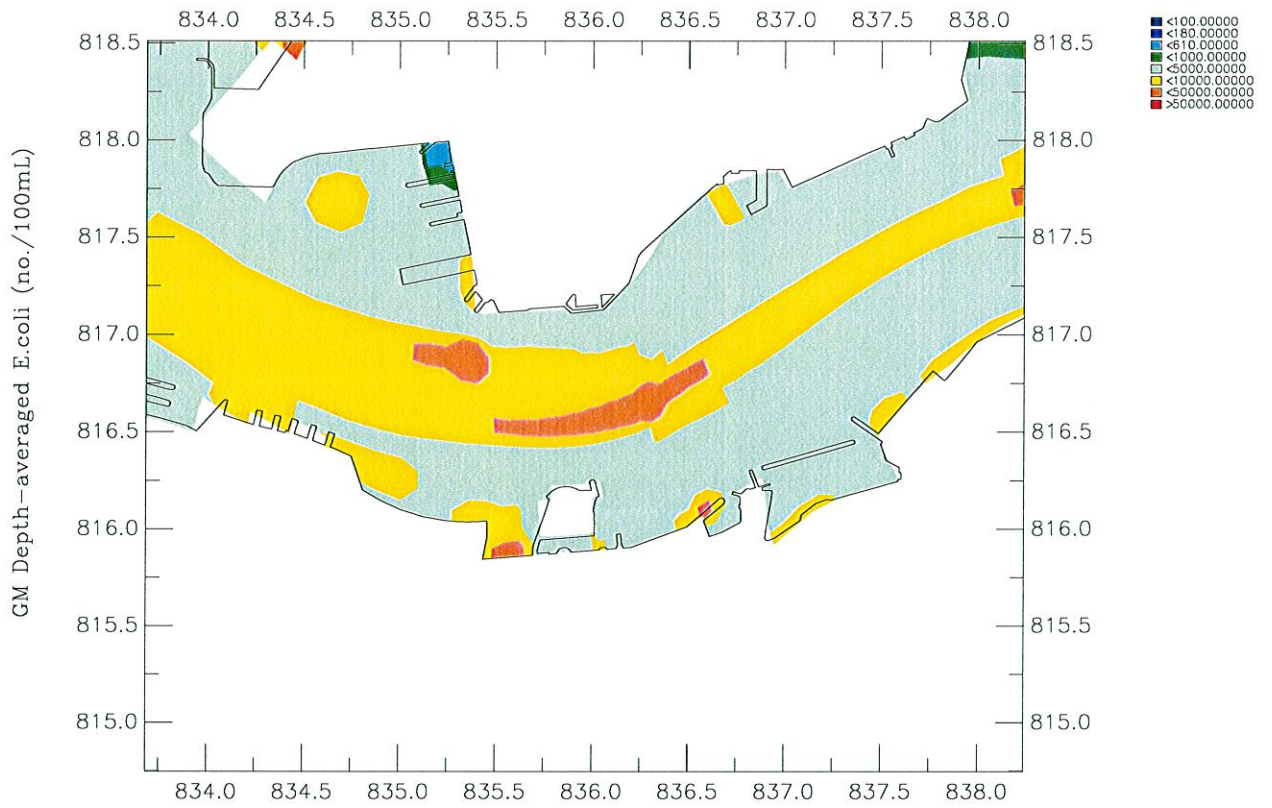
Figure 4.3 Oct 2006

Dry Season

Maunsell

WQ/Detailed/2009/Plot

DA-TIN.ssn



Agreement No. CE 54/2001 (CE) Wan Chai Development Phase II: Planning And Engineering Review  
 Geometric Mean Depth-averaged E.coli Concentration  
 Top: Baseline; Bottom: Interim Construction Scenario 3C

Figure 5.3 Oct 2006

Dry Season

Maunsell

WQ/Detailed/2009/Plot GM-Ecoli.ssn