

Appendix 10.3
Affected Trees in Victoria Park

**Table 1A - Trees which will be affected by Reprovisioning Works under Option 1
(95mm < Trunk Diameter ≤ 150mm)**

Total no. of trees to be affected under Option 1
Subtotal No. of trees
No. of Trees to be transplanted
No. of Trees to be felled

160
67
40
27

Tree No.	Tree Species	Chinese Name	Size			Form (Good/ Fair/Poor)	Health condition (Good/ Fair/Poor)	Amenity value (High/ Medium/ Low)	Survival rate after (High / Medium / Low)	Recom- mendation (Retain/ Transplant/ Fell)	Remarks
			Overall Height (m)	Trunk Diameter (mm)	Crown Spread (m)						
T203	Bauhinia blakeana	洋紫荊	7.5	140	4.5	F	F	M	M	T	Affected by VP Reprovisioning Works - Option 1
T205	Bauhinia blakeana	洋紫荊	4.0	134	5.0	F	F	M	M	T	Affected by VP Reprovisioning Works - Option 1
T209	Bauhinia blakeana	洋紫荊	6.0	115	2.5	F	P	L	M	F	Affected by VP Reprovisioning Works - Option 1
T210	Bauhinia blakeana	洋紫荊	3.0	115	4.0	F	F	M	M	T	Affected by VP Reprovisioning Works - Option 1
T211	Bauhinia blakeana	洋紫荊	5.0	121	5.5	P	F	L	M	F	Affected by VP Reprovisioning Works - Option 1
T212	Bauhinia blakeana	洋紫荊	8.0	146	7.0	F	F	M	M	T	Affected by VP Reprovisioning Works - Option 1
T213	Bauhinia blakeana	洋紫荊	7.0	118	6.0	F	F	M	M	T	Affected by VP Reprovisioning Works - Option 1
T214	Bauhinia blakeana	洋紫荊	7.0	127	7.0	F	F	M	M	T	Affected by VP Reprovisioning Works - Option 1
T215	Bauhinia blakeana	洋紫荊	5.0	127	4.0	F	F	M	M	T	Affected by VP Reprovisioning Works - Option 1
T236	Lagerstroemia speciosa	洋紫薇(大花紫薇)	7.0	137	5.0	P	F	L	L	F	Affected by VP Reprovisioning Works - Option 1
T278	Ficus virens	大翼榕	7.5	143	5.0	F	P	L	L	F	Affected by VP Reprovisioning Works - Option 1
T280	Ficus virens	大翼榕	10.0	134	6.0	F	F	M	L	F	Affected by VP Reprovisioning Works - Option 1
T713	Bauhinia blakeana	洋紫荊	9.0	131	5.0	F	F	M	M	T	Affected by VP Reprovisioning Works - Option 1
T715	Bauhinia blakeana	洋紫荊	5.0	121	6.0	F	F	M	M	T	Affected by VP Reprovisioning Works - Option 1
T716	Bauhinia blakeana	洋紫荊	6.0	122	5.0	F	F	M	M	T	Affected by VP Reprovisioning Works - Option 1
T717	Juniperus chinensis var. kaizuca	龍柏	5.0	137	3.5	G	G	H	L	F	Affected by VP Reprovisioning Works - Option 1
T718	Delonix regia	鳳凰木	7.0	108	4.0	F	F	M	M	T	Affected by VP Reprovisioning Works - Option 1
T719	Delonix regia	鳳凰木	7.0	124	4.0	F	F	M	M	T	Affected by VP Reprovisioning Works - Option 1
T720	Delonix regia	鳳凰木	4.0	121	3.0	F	F	M	M	T	Affected by VP Reprovisioning Works - Option 1
T721	Juniperus chinensis var. kaizuca	龍柏	5.0	131	4.5	G	G	H	L	F	Affected by VP Reprovisioning Works - Option 1
T723	Juniperus chinensis var. kaizuca	龍柏	5.0	134	4.5	G	G	H	L	F	Affected by VP Reprovisioning Works - Option 1

**Table 1A - Trees which will be affected by Reprovisioning Works under Option 1
(95mm < Trunk Diameter ≤ 150mm)**

Total no. of trees to be affected under Option 1
Subtotal No. of trees
No. of Trees to be transplanted
No. of Trees to be felled

160
67
40
27

Tree No.	Tree Species	Chinese Name	Size			Form (Good/ Fair/Poor)	Health condition (Good/ Fair/Poor)	Amenity value (High/ Medium/ Low)	Survival rate after (High / Medium / Low)	Recom- mendation (Retain/ Transplant/ Fell)	Remarks
			Overall Height (m)	Trunk Diameter (mm)	Crown Spread (m)						
T724	<i>Juniperus chinensis</i> var. <i>kaizuka</i>	龍柏	5.0	108	3.0	G	F	M	L	F	Affected by VP Reprovisioning Works - Option 1
T728	<i>Erythrina variegata</i>	刺桐	6.0	105	4.0	G	F	M	M	T	Affected by VP Reprovisioning Works - Option 1
T730	<i>Erythrina variegata</i>	刺桐	6.0	111	4.0	G	F	M	M	T	Affected by VP Reprovisioning Works - Option 1
T734	<i>Erythrina variegata</i>	刺桐	6.0	111	4.0	G	G	H	M	T	Affected by VP Reprovisioning Works - Option 1
T735	<i>Erythrina variegata</i>	刺桐	6.0	111	4.0	G	G	H	M	T	Affected by VP Reprovisioning Works - Option 1
T736	<i>Erythrina variegata</i>	刺桐	6.0	111	4.0	G	F	M	M	T	Affected by VP Reprovisioning Works - Option 1
T737	<i>Erythrina variegata</i>	刺桐	6.0	123	4.0	G	F	M	M	T	Affected by VP Reprovisioning Works - Option 1
T742	<i>Erythrina variegata</i>	刺桐	6.0	127	4.0	G	F	M	M	T	Affected by VP Reprovisioning Works - Option 1
T743	<i>Erythrina variegata</i>	刺桐	6.0	140	4.0	G	G	H	M	T	Affected by VP Reprovisioning Works - Option 1
T744	<i>Erythrina variegata</i>	刺桐	6.0	140	4.0	G	G	H	M	T	Affected by VP Reprovisioning Works - Option 1
T745	<i>Erythrina variegata</i>	刺桐	6.0	140	4.0	G	F	M	M	T	Affected by VP Reprovisioning Works - Option 1
T746	<i>Erythrina variegata</i>	刺桐	6.0	118	4.0	G	F	M	M	T	Affected by VP Reprovisioning Works - Option 1
T747	<i>Erythrina variegata</i>	刺桐	6.0	131	4.0	G	F	M	M	T	Affected by VP Reprovisioning Works - Option 1
T748	<i>Delonix regia</i>	鳳凰木	5.0	99	5.0	G	G	H	M	T	Affected by VP Reprovisioning Works - Option 1
T749	<i>Erythrina variegata</i>	刺桐	6.0	116	5.0	G	F	M	M	T	Affected by VP Reprovisioning Works - Option 1
T752	<i>Erythrina variegata</i>	刺桐	6.0	146	4.0	G	G	H	M	T	Affected by VP Reprovisioning Works - Option 1
T763	<i>Ficus virens</i>	大葉榕	3.0	119	5.0	F	F	M	L	F	Affected by VP Reprovisioning Works - Option 1
T764	<i>Bauhinia blakeana</i>	洋紫荊	6.0	115	4.0	F	F	M	M	T	Affected by VP Reprovisioning Works - Option 1
T765	<i>Bauhinia blakeana</i>	洋紫荊	6.0	111	4.0	F	F	M	M	T	Affected by VP Reprovisioning Works - Option 1
T782	<i>Bauhinia blakeana</i>	洋紫荊	6.0	102	3.0	F	F	M	M	T	Affected by VP Reprovisioning Works - Option 1
T783	<i>Bauhinia blakeana</i>	洋紫荊	7.0	121	4.0	F	F	M	M	T	Affected by VP Reprovisioning Works - Option 1

**Table 1A - Trees which will be affected by Reprovisioning Works under Option 1
(95mm < Trunk Diameter ≤ 150mm)**

Total no. of trees to be affected under Option 1 160
 Subtotal No. of trees 67
 No. of Trees to be transplanted 40
 No. of Trees to be felled 27

Tree No.	Tree Species	Chinese Name	Size		Form (Good/ Fair/Poor)	Health condition (Good/ Fair/Poor)	Amenity value (High/ Medium/ Low)	Survival rate after (High / Medium / Low)	Recom- mendation (Retain/ Transplant/ Fell)	Remarks
			Overall Height (m)	Trunk Diameter (mm)						
T784	Bauhinia blakeana	洋紫荊	7.5	134	F	F	M	M	T	Affected by VP Reprovisioning Works - Option 1
T789	Lagerstroemia speciosa	洋紫荊(大花紫荊)	3.0	95	F	F	M	L	F	Affected by VP Reprovisioning Works - Option 1
T792	Lagerstroemia speciosa	洋紫荊(大花紫荊)	7.0	95	F	G	M	L	F	Affected by VP Reprovisioning Works - Option 1
T794	Lagerstroemia speciosa	洋紫荊(大花紫荊)	7.0	146	F	F	M	L	F	Affected by VP Reprovisioning Works - Option 1
T797	Eriobotrya japonica	枇杷	4.0	102	F	P	L	L	F	Affected by VP Reprovisioning Works - Option 1
T812	Acacia auriculiformis	耳葉相思	7.5	95	F	G	M	L	F	Affected by VP Reprovisioning Works - Option 1
T817	Acacia auriculiformis	耳葉相思	8.0	127	F	G	M	L	F	Affected by VP Reprovisioning Works - Option 1
T818	Acacia auriculiformis	耳葉相思	8.0	108	G	F	M	L	F	Affected by VP Reprovisioning Works - Option 1
T820	Acacia auriculiformis	耳葉相思	13.0	150	G	F	M	L	F	Affected by VP Reprovisioning Works - Option 1
T821	Acacia auriculiformis	耳葉相思	13.0	131	G	F	M	L	F	Affected by VP Reprovisioning Works - Option 1
T822	Acacia auriculiformis	耳葉相思	7.0	102	F	P	L	L	F	Affected by VP Reprovisioning Works - Option 1
T872	Liquidambar formosana	楓香 (槭樹)	7.0	143	G	F	M	L	F	Affected by VP Reprovisioning Works - Option 1
T875	Liquidambar formosana	楓香 (槭樹)	7.0	124	G	F	M	L	F	Affected by VP Reprovisioning Works - Option 1
T881	Araucaria heterophylla	南洋杉	7.0	115	F	G	M	L	F	Affected by VP Reprovisioning Works - Option 1
T965	Araucaria cunninghamii	花鱗杉	5.0	123	F	F	M	L	F	Affected by VP Reprovisioning Works - Option 1
T966	Araucaria cunninghamii	花鱗杉	4.5	99	F	F	M	L	F	Affected by VP Reprovisioning Works - Option 1
T973	Bauhinia blakeana	洋紫荊	5.0	127	F	P	L	M	F	Affected by VP Reprovisioning Works - Option 1
T974	Bauhinia blakeana	洋紫荊	7.0	108	F	F	M	M	T	Affected by VP Reprovisioning Works - Option 1
T975	Bauhinia blakeana	洋紫荊	7.0	124	F	F	M	M	T	Affected by VP Reprovisioning Works - Option 1
T984	Casuarina equisetifolia	木麻黃	5.0	95	G	G	H	L	F	Affected by VP Reprovisioning Works - Option 1
T1000	Bauhinia variegata	宮粉羊蹄甲	8.0	140	G	F	M	M	T	Affected by VP Reprovisioning Works - Option 1

**Table 1A - Trees which will be affected by Reprovisioning Works under Option 1
(95mm < Trunk Diameter ≤ 150mm)**

Total no. of trees to be affected under Option 1 160
 Subtotal No. of trees 67
 No. of Trees to be transplanted 40
 No. of Trees to be felled 27

Tree No.	Tree Species	Chinese Name	Size		Form (Good/ Fair/Poor)	Health condition (Good/ Fair/Poor)	Amenity value (High/ Medium/ Low)	Survival rate after (High / Medium / Low)	Recom- mendation (Retain/ Transplant/ Fell)	Remarks
			Overall Height (m)	Trunk Diameter (mm)						
T1003	Bauhinia variegata	宫粉羊蹄甲	5.0	118	5.0	F	M	M	T	Affected by VP Reprovisioning Works - Option 1
T1004	Bauhinia variegata	宫粉羊蹄甲	5.0	121	6.0	F	M	M	T	Affected by VP Reprovisioning Works - Option 1
T1005	Bauhinia variegata	宫粉羊蹄甲	6.0	140	6.0	G	H	M	T	Affected by VP Reprovisioning Works - Option 1
T1006	Bauhinia variegata	宫粉羊蹄甲	5.0	146	5.0	F	M	M	T	Affected by VP Reprovisioning Works - Option 1

**Table 1B - Trees which will be affected by Reprovisioning Works under Option 1
(150mm < Trunk Diameter ≤ 300mm)**

Total no. of trees to be affected under Option 1 160
 Subtotal No. of trees 67
 No. of Trees to be transplanted 35
 No. of Trees to be felled 32

Tree No.	Tree Species	Chinese Name	Size			Form (Good/ Fair/Poor)	Health condition (Good/ Fair/Poor)	Amenity value (High/ Medium/ Low)	Survival rate after (High / Medium / Low)	Recom- mendation (Retain/ Transplant/ Fell)	Remarks
			Overall Height (m)	Trunk Diameter (mm)	Crown Spread (m)						
T170	Ficus virens	大葉榕	7.0	159	3.0	G	G	H	L	F	Affected by VP Reprovisioning Works - Option 1
T204	Bauhinia blakeana	洋紫荊	7.5	153	4.5	F	F	M	M	T	Affected by VP Reprovisioning Works - Option 1
T206	Bauhinia blakeana	洋紫荊	2.0	172	3.0	F	P	L	M	F	Affected by VP Reprovisioning Works - Option 1
T208	Ficus benjamina	垂葉榕	6.0	255	5.0	G	G	H	M	T	Affected by VP Reprovisioning Works - Option 1
T216	Melia azedarach	苦楝	8.0	239	8.0	F	G	M	M	T	Affected by VP Reprovisioning Works - Option 1
T219	Lagerstroemia speciosa	洋紫薇(大花紫薇)	7.0	175	6.0	F	G	M	L	F	Affected by VP Reprovisioning Works - Option 1
T222	Livistona chinensis	蒲葵	9.0	181	2.5	G	F	M	M	T	Affected by VP Reprovisioning Works - Option 1
T223	Livistona chinensis	蒲葵	7.0	207	4.0	G	G	H	M	T	Affected by VP Reprovisioning Works - Option 1
T224	Livistona chinensis	蒲葵	8.5	194	4.0	G	G	H	M	T	Affected by VP Reprovisioning Works - Option 1
T225	Livistona chinensis	蒲葵	7.0	172	2.0	G	G	H	M	T	Affected by VP Reprovisioning Works - Option 1
T226	Livistona chinensis	蒲葵	7.0	223	2.0	G	G	H	M	T	Affected by VP Reprovisioning Works - Option 1
T227	Livistona chinensis	蒲葵	9.0	229	4.0	G	G	H	M	T	Affected by VP Reprovisioning Works - Option 1
T228	Livistona chinensis	蒲葵	12.0	271	10.0	P	F	L	L	F	Affected by VP Reprovisioning Works - Option 1
T229	Grevillea robusta	銀樺	9.0	223	4.0	F	F	M	L	F	Affected by VP Reprovisioning Works - Option 1
T230	Livistona chinensis	蒲葵	1.8	159	3.0	G	G	H	M	T	Affected by VP Reprovisioning Works - Option 1
T234	Lagerstroemia speciosa	洋紫薇(大花紫薇)	7.0	166	3.0	F	P	L	L	F	Affected by VP Reprovisioning Works - Option 1
T235	Livistona chinensis	蒲葵	9.0	188	3.5	G	G	H	M	T	Affected by VP Reprovisioning Works - Option 1
T237	Livistona chinensis	蒲葵	10.0	232	4.0	P	G	L	M	F	Affected by VP Reprovisioning Works - Option 1
T281	Ficus virens	大葉榕	10.0	159	3.0	F	F	M	L	F	Affected by VP Reprovisioning Works - Option 1
T282	Ficus virens	大葉榕	10.0	202	8.0	F	F	M	L	F	Affected by VP Reprovisioning Works - Option 1

**Table 1B - Trees which will be affected by Reprovisioning Works under Option 1
(150mm < Trunk Diameter ≤ 300mm)**

Total no. of trees to be affected under Option 1 160
 Subtotal No. of trees 67
 No. of Trees to be transplanted 35
 No. of Trees to be felled 32

Tree No.	Tree Species	Chinese Name	Size		Form (Good/ Fair/Poor)	Health condition (Good/ Fair/Poor)	Amenity value (High/ Medium/ Low)	Survival rate after (High / Medium / Low)	Recom- mendation (Retain/ Transplant/ Fall)	Remarks
			Overall Height (m)	Trunk Diameter (mm)						
T283	<i>Ficus virens</i>	大葉榕	10.0	271	F	G	M	L	F	Affected by VP Reprovisioning Works - Option 1
T292	<i>Macaranga tanarius</i>	血桐	4.0	215	F	F	M	L	F	Affected by VP Reprovisioning Works - Option 1
T293	<i>Liquidambar formosana</i>	楓香 (楓樹)	9.0	169	P	F	L	L	F	Affected by VP Reprovisioning Works - Option 1
T294	<i>Liquidambar formosana</i>	楓香 (楓樹)	9.0	194	F	F	M	L	F	Affected by VP Reprovisioning Works - Option 1
T714	<i>Cassia siamea</i>	鑼刀木	11.0	220	F	F	M	L	F	Affected by VP Reprovisioning Works - Option 1
T733	<i>Michelia alba</i>	白蘭	8.0	293	G	G	H	L	F	Affected by VP Reprovisioning Works - Option 1
T740	<i>Erythrina variegata</i>	刺桐	6.0	161	G	F	M	M	T	Affected by VP Reprovisioning Works - Option 1
T741	<i>Erythrina variegata</i>	刺桐	6.0	162	G	F	M	M	T	Affected by VP Reprovisioning Works - Option 1
T750	<i>Erythrina variegata</i>	刺桐	6.0	172	G	G	H	M	T	Affected by VP Reprovisioning Works - Option 1
T751	<i>Erythrina variegata</i>	刺桐	6.0	169	G	F	M	M	T	Affected by VP Reprovisioning Works - Option 1
T753	<i>Erythrina variegata</i>	刺桐	6.0	153	G	F	M	M	T	Affected by VP Reprovisioning Works - Option 1
T754	<i>Erythrina variegata</i>	刺桐	6.0	156	G	F	M	M	T	Affected by VP Reprovisioning Works - Option 1
T755	<i>Erythrina variegata</i>	刺桐	6.0	167	G	F	M	M	T	Affected by VP Reprovisioning Works - Option 1
T756	<i>Erythrina variegata</i>	刺桐	6.0	159	G	F	M	M	T	Affected by VP Reprovisioning Works - Option 1
T757	<i>Erythrina variegata</i>	刺桐	6.0	197	G	G	H	M	T	Affected by VP Reprovisioning Works - Option 1
T759	<i>Erythrina variegata</i>	刺桐	7.0	178	F	G	M	M	T	Affected by VP Reprovisioning Works - Option 1
T760	<i>Erythrina variegata</i>	刺桐	6.0	197	G	G	H	M	T	Affected by VP Reprovisioning Works - Option 1
T761	<i>Erythrina variegata</i>	刺桐	6.0	166	G	F	M	M	T	Affected by VP Reprovisioning Works - Option 1
T762	<i>Erythrina variegata</i>	刺桐	6.0	153	F	P	M	M	T	Affected by VP Reprovisioning Works - Option 1
T769	<i>Ficus microcarpa</i>	細葉榕(榕樹)	5.0	200	F	F	M	M	T	Affected by VP Reprovisioning Works - Option 1

**Table 1B - Trees which will be affected by Reprovisioning Works under Option 1
(150mm < Trunk Diameter ≤ 300mm)**

Total no. of trees to be affected under Option 1 160
 Subtotal No. of trees 67
 No. of Trees to be transplanted 35
 No. of Trees to be felled 32

Tree No.	Tree Species	Chinese Name	Size		Form (Good/ Fair/Poor)	Health condition (Good/ Fair/Poor)	Amenity value (High/ Medium/ Low)	Survival rate after (High / Medium / Low)	Recom- mendation (Retain/ Transplant/ Fell)	Remarks
			Overall Height (m)	Trunk Diameter (mm)						
T770	Ficus benjamina	垂葉榕	6.0	210	G	G	H	M	T	Affected by VP Reprovisioning Works - Option 1
T777	Ficus benjamina	垂葉榕	6.0	286	G	G	H	M	T	Affected by VP Reprovisioning Works - Option 1
T779	Ficus benjamina	垂葉榕	7.0	232	G	G	H	M	T	Affected by VP Reprovisioning Works - Option 1
T785	Bauhinia blakeana	洋紫荊	6.0	166	F	F	M	M	T	Affected by VP Reprovisioning Works - Option 1
T786	Aleurites moluccana	石栗	6.0	175	F	F	M	M	T	Affected by VP Reprovisioning Works - Option 1
T790	Lagerstroemia speciosa	洋紫荊(大花紫荊)	7.0	232	F	F	M	L	F	Affected by VP Reprovisioning Works - Option 1
T795	Plumelia rubra	雞蛋花	7.0	185	F	P	L	L	F	Affected by VP Reprovisioning Works - Option 1
T796	Plumelia rubra	雞蛋花	7.0	166	F	P	L	L	F	Affected by VP Reprovisioning Works - Option 1
T799	Lagerstroemia speciosa	洋紫荊(大花紫荊)	8.0	210	F	F	M	L	F	Affected by VP Reprovisioning Works - Option 1
T800	Lagerstroemia speciosa	洋紫荊(大花紫荊)	8.0	213	G	F	M	L	F	Affected by VP Reprovisioning Works - Option 1
T801	Lagerstroemia speciosa	洋紫荊(大花紫荊)	6.0	207	G	F	M	L	F	Affected by VP Reprovisioning Works - Option 1
T804	Lagerstroemia speciosa	洋紫荊(大花紫荊)	6.0	210	G	G	H	L	F	Affected by VP Reprovisioning Works - Option 1
T806	Eucalyptus robusta	大葉桉	6.0	251	G	F	M	L	F	Affected by VP Reprovisioning Works - Option 1
T809	Lagerstroemia speciosa	洋紫荊(大花紫荊)	6.0	188	G	F	M	L	F	Affected by VP Reprovisioning Works - Option 1
T845	Acacia auriculiformis	耳葉相思	8.0	197	G	F	M	L	F	Affected by VP Reprovisioning Works - Option 1
T878	Araucaria heterophylla	南洋杉	12.0	178	G	G	H	L	F	Affected by VP Reprovisioning Works - Option 1
T879	Araucaria heterophylla	南洋杉	9.0	178	G	F	M	L	F	Affected by VP Reprovisioning Works - Option 1
T880	Araucaria heterophylla	南洋杉	17.0	239	G	G	H	L	F	Affected by VP Reprovisioning Works - Option 1
T882	Araucaria heterophylla	南洋杉	15.0	232	G	G	H	L	F	Affected by VP Reprovisioning Works - Option 1
T883	Araucaria heterophylla	南洋杉	15.0	283	G	G	H	L	F	Affected by VP Reprovisioning Works - Option 1

**Table 1B - Trees which will be affected by Reprovisioning Works under Option 1
(150mm < Trunk Diameter ≤ 300mm)**

Total no. of trees to be affected under Option 1 160
 Subtotal No. of trees 67
 No. of Trees to be transplanted 35
 No. of Trees to be felled 32

Tree No.	Tree Species	Chinese Name	Size			Form (Good/ Fair/Poor)	Health condition (Good/ Fair/Poor)	Amenity value (High/ Medium/ Low)	Survival rate after (High / Medium / Low)	Recom- mendation (Retain/ Transplant/ Fell)	Remarks
			Overall Height (m)	Trunk Diameter (mm)	Crown Spread (m)						
T977	Melia azedarach	苦楝	9.0	286	6.0	F	F	M	M	T	Affected by VP Reprovisioning Works - Option 1
T980	Macaranga tanarius	血桐	5.0	197	8.0	F	P	L	L	F	Affected by VP Reprovisioning Works - Option 1
T997	Bauhinia variegata	宫粉羊蹄甲	5.0	172	6.0	G	G	M	M	T	Affected by VP Reprovisioning Works - Option 1
T998	Bauhinia variegata	宫粉羊蹄甲	7.0	153	6.0	G	F	M	M	T	Affected by VP Reprovisioning Works - Option 1
T999	Bauhinia variegata	宫粉羊蹄甲	6.0	151	6.0	G	F	M	M	T	Affected by VP Reprovisioning Works - Option 1
T1001	Bauhinia variegata	宫粉羊蹄甲	6.0	153	6.0	G	F	M	M	T	Affected by VP Reprovisioning Works - Option 1
T1002	Bauhinia variegata	宫粉羊蹄甲	5.0	159	6.0	G	P	L	M	F	Affected by VP Reprovisioning Works - Option 1

**Table 1C - Trees which will be affected by Reprovisioning Works under Option 1
(Trunk Diameter > 300mm)**

Total no. of trees to be affected under Option 1
Subtotal No. of trees
No. of Trees to be transplanted
No. of Trees to be felled

160
26
17
9

Tree No.	Tree Species	Chinese Name	Size			Form (Good/ Fair/Poor)	Health condition (Good/ Fair/Poor)	Amenity value (High/ Medium/ Low)	Survival rate after (High / Medium / Low)	Recom- mendation (Retain/ Transplant/ Fell)	Remarks
			Overall Height (m)	Trunk Diameter (mm)	Crown Spread (m)						
T217	<i>Melaleuca quinquenervia</i>	白千層	12.0	312	8.0	G	G	H	M	T	Affected by VP Reprovisioning Works - Option 1
T221	<i>Delonix regia</i>	鳳凰木	12.0	509	10.0	P	F	L	M	F	Affected by VP Reprovisioning Works - Option 1
T279	<i>Acacia coriusa</i>	台灣相思	12.0	392	10.0	F	P	L	L	F	Affected by VP Reprovisioning Works - Option 1
T284	<i>Acacia coriusa</i>	台灣相思	12.5	535	20.0	F	F	M	L	F	Affected by VP Reprovisioning Works - Option 1
T285	<i>Elaeis guineensis</i>	油棕	13.0	551	5.0	G	G	H	M	T	Affected by VP Reprovisioning Works - Option 1
T286	<i>Elaeis guineensis</i>	油棕	13.0	579	4.0	G	G	H	M	T	Affected by VP Reprovisioning Works - Option 1
T287	<i>Elaeis guineensis</i>	油棕	14.0	541	6.0	G	G	H	M	T	Affected by VP Reprovisioning Works - Option 1
T288	<i>Ficus benjamina</i>	垂葉榕	13.0	446	8.0	G	G	H	M	T	Affected by VP Reprovisioning Works - Option 1
T289	<i>Elaeis guineensis</i>	油棕	9.0	589	4.5	G	G	H	M	T	Affected by VP Reprovisioning Works - Option 1
T290	<i>Bauhinia blakeana</i>	洋紫荊	11.0	392	10.0	F	F	M	M	T	Affected by VP Reprovisioning Works - Option 1
T291	<i>Celtis sinensis</i>	朴樹	13.0	321	11.0	G	G	H	M	T	Affected by VP Reprovisioning Works - Option 1
T726	<i>Delonix regia</i>	鳳凰木	14.0	633	12.0	G	F	M	M	T	Affected by VP Reprovisioning Works - Option 1
T738	<i>Erythrina variegata</i>	刺桐	11.0	379	10.0	F	P	L	M	F	Affected by VP Reprovisioning Works - Option 1
T739	<i>Delonix regia</i>	鳳凰木	16.0	497	15.0	G	G	H	M	T	Affected by VP Reprovisioning Works - Option 1
T758	<i>Erythrina variegata</i>	刺桐	9.0	446	9.0	F	G	M	M	T	Affected by VP Reprovisioning Works - Option 1
T781	<i>Delonix regia</i>	鳳凰木	10.0	334	9.0	F	P	L	M	F	Affected by VP Reprovisioning Works - Option 1
T807	<i>Eucalyptus robusta</i>	大葉桉	5.0	503	1.0	F	P	L	L	F	Affected by VP Reprovisioning Works - Option 1
T810	<i>Delonix regia</i>	鳳凰木	14.0	493	12.0	G	F	M	M	T	Affected by VP Reprovisioning Works - Option 1
T811	<i>Delonix regia</i>	鳳凰木	13.0	462	12.5	F	F	M	M	T	Affected by VP Reprovisioning Works - Option 1
T813	<i>Delonix regia</i>	鳳凰木	13.0	398	12.0	G	P	L	M	F	Affected by VP Reprovisioning Works - Option 1

**Table 1C - Trees which will be affected by Reprovisioning Works under Option 1
(Trunk Diameter > 300mm)**

Total no. of trees to be affected under Option 1 160
 Subtotal No. of trees 26
 No. of Trees to be transplanted 17
 No. of Trees to be felled 9

Tree No.	Tree Species	Chinese Name	Size			Form (Good/ Fair/Poor)	Health condition (Good/ Fair/Poor)	Amenity value (High/ Medium/ Low)	Survival rate after (High / Medium / Low)	Recom- mendation (Retain/ Transplant/ Fell)	Remarks
			Overall Height (m)	Trunk Diameter (mm)	Crown Spread (m)						
T815	Delonix regia	鳳凰木	12.0	350	12.0	G	G	H	M	T	Affected by VP Reprovisioning Works - Option 1
T816	Delonix regia	鳳凰木	15.0	653	13.0	F	F	M	M	T	Affected by VP Reprovisioning Works - Option 1
T978	Melia azedarach	苦楝	9.0	497	12.0	G	G	H	M	T	Affected by VP Reprovisioning Works - Option 1
T981	Casuarina equisetifolia	木麻黃	14.0	500	9.0	G	G	H	L	F	Affected by VP Reprovisioning Works - Option 1
T982	Casuarina equisetifolia	木麻黃	15.0	563	12.0	G	F	M	L	F	Affected by VP Reprovisioning Works - Option 1
T995	Delonix regia	鳳凰木	10.0	337	8.0	G	G	H	M	T	Affected by VP Reprovisioning Works - Option 1

**Table 2A - Trees which will be affected by Reprovisioning Works under Option 2
(95mm < Trunk Diameter ≤ 150mm)**

Total no. of trees to be affected under Option 2 **62**
 Subtotal No. of trees **17**
 No. of Trees to be transplanted **9**
 No. of Trees to be felled **3**
 unknown **5**

Tree No.	Tree Species	Chinese Name	Size			Form (Good/ Fair/Poor)	Health condition (Good/ Fair/Poor)	Amenity value (High/ Medium/ Low)	Survival rate after (High / Medium / Low)	Recom- mendation (Retain/ Transplant/ Fell)	Remarks
			Overall Height (m)	Trunk Diameter (mm)	Crown Spread (m)						
T1278	Ficus virens	大葉榕	7.5	143	5.0	F	P	L	L	F	Affected by VP Reprovisioning Works - Option 2
T1280	Ficus virens	大葉榕	10.0	134	6.0	F	F	M	L	F	Affected by VP Reprovisioning Works - Option 2
T1000	Bauhinia variegata	宮粉羊蹄甲	8.0	140	6.0	G	F	M	M	T	Affected by VP Reprovisioning Works - Option 2
T1003	Bauhinia variegata	宮粉羊蹄甲	5.0	118	5.0	G	F	M	M	T	Affected by VP Reprovisioning Works - Option 2
T1004	Bauhinia variegata	宮粉羊蹄甲	5.0	121	6.0	G	F	M	M	T	Affected by VP Reprovisioning Works - Option 2
T1005	Bauhinia variegata	宮粉羊蹄甲	6.0	140	6.0	G	G	H	M	T	Affected by VP Reprovisioning Works - Option 2
T1006	Bauhinia variegata	宮粉羊蹄甲	5.0	146	5.0	F	F	M	M	T	Affected by VP Reprovisioning Works - Option 2
T1007	Bauhinia variegata	宮粉羊蹄甲	5.0	103	5.0	F	F	M	M	T	Affected by VP Reprovisioning Works - Option 2
T1008	Bauhinia variegata	宮粉羊蹄甲	5.0	100	5.0	F	F	M	M	T	Affected by VP Reprovisioning Works - Option 2
T1009	Bauhinia variegata	宮粉羊蹄甲	6.0	108	6.0	F	F	M	M	T	Affected by VP Reprovisioning Works - Option 2
T1010	Bauhinia variegata	宮粉羊蹄甲	6.0	111	6.0	F	F	M	M	T	Affected by VP Reprovisioning Works - Option 2
T1012	Cassia surattensis	黃槐	5.0	100	5.0	G	G	H	L	F	Affected by VP Reprovisioning Works - Option 2
T1092	Not Available		7.0	143	6.0						Affected by VP Reprovisioning Works - Option 2
T1093	Not Available		4.0	102	4.0						Affected by VP Reprovisioning Works - Option 2
T1095	Not Available		6.0	115	4.0						Affected by VP Reprovisioning Works - Option 2
T1096	Not Available		5.0	100	4.0						Affected by VP Reprovisioning Works - Option 2
T1100	Not Available		6.0	102	3.0						Affected by VP Reprovisioning Works - Option 2

**Table 2B - Trees which will be affected by Reprovisioning works under Option 2
(150mm < Trunk Diameter ≤ 300mm)**

Tree No.	Tree Species	Chinese Name	Size			Form (Good/ Fair/Poor)	Health condition (Good/ Fair/Poor)	Amenity value (High/ Medium/ Low)	Survival rate after (High / Medium / Low)	Recom- mendation (Retain/ Transplant/ Fell)	Remarks
			Overall Height (m)	Trunk Diameter (mm)	Crown Spread (m)						
T281	Ficus virens	大葉榕	10.0	159	3.0	F	F	M	L	F	Affected by VP Reprovisioning Works - Option 2
T282	Ficus virens	大葉榕	10.0	202	8.0	F	F	M	L	F	Affected by VP Reprovisioning Works - Option 2
T283	Ficus virens	大葉榕	10.0	271	9.0	F	G	M	L	F	Affected by VP Reprovisioning Works - Option 2
T292	Macaranga tanarius	血桐	4.0	216	9.0	F	F	M	L	F	Affected by VP Reprovisioning Works - Option 2
T293	Liquidambar tomosana	楓香 (楓樹)	9.0	169	7.0	P	F	L	L	F	Affected by VP Reprovisioning Works - Option 2
T417	Livistona chinensis	蒲葵	8.0	216	6.0	G	G	H	M	T	Affected by VP Reprovisioning Works - Option 2
T418	Livistona chinensis	蒲葵	7.0	229	6.0	G	G	H	M	T	Affected by VP Reprovisioning Works - Option 2
T423	Livistona chinensis	蒲葵	5.5	172	3.5	G	G	H	M	T	Affected by VP Reprovisioning Works - Option 2
T424	Livistona chinensis	蒲葵	7.5	220	4.5	G	G	H	M	T	Affected by VP Reprovisioning Works - Option 2
T997	Bauhinia variegata	宮粉羊蹄甲	5.0	172	6.0	G	G	H	M	T	Affected by VP Reprovisioning Works - Option 2
T998	Bauhinia variegata	宮粉羊蹄甲	7.0	153	6.0	G	F	M	M	T	Affected by VP Reprovisioning Works - Option 2
T999	Bauhinia variegata	宮粉羊蹄甲	6.0	151	6.0	G	F	M	M	T	Affected by VP Reprovisioning Works - Option 2
T1001	Bauhinia variegata	宮粉羊蹄甲	6.0	153	6.0	G	F	M	M	T	Affected by VP Reprovisioning Works - Option 2
T1002	Bauhinia variegata	宮粉羊蹄甲	5.0	169	6.0	G	P	L	M	F	Affected by VP Reprovisioning Works - Option 2
T1072	Pavonala madagascariensis	旅人蕉	5.0	290	4.0	G	G	H	L	F	Affected by VP Reprovisioning Works - Option 2
T1073	Pavonala madagascariensis	旅人蕉	4.0	242	4.0	G	G	H	L	F	Affected by VP Reprovisioning Works - Option 2
T1075	Pavonala madagascariensis	旅人蕉	5.0	226	4.0	G	G	H	L	F	Affected by VP Reprovisioning Works - Option 2
T1076	Pavonala madagascariensis	旅人蕉	5.0	242	5.0	G	G	H	L	F	Affected by VP Reprovisioning Works - Option 2
T1078	Pavonala madagascariensis	旅人蕉	7.0	295	7.0	G	G	H	L	F	Affected by VP Reprovisioning Works - Option 2
T1079	Roystonea regia	王棕(大王椰子)	4.0	175	4.0	G	G	H	H	T	Affected by VP Reprovisioning Works - Option 2

Total no. of trees to be affected under Option 2 62
Subtotal No. of trees 29
No. of Trees to be transplanted 15
No. of Trees to be felled 12
unknown 2

**Table 2B - Trees which will be affected by Reprovisioning works under Option 2
(150mm < Trunk Diameter ≤ 300mm)**

Total no. of trees to be affected under Option 2 **62**
 Subtotal No. of trees **29**
 No. of Trees to be transplanted **15**
 No. of Trees to be felled **12**
 unknown **2**

Tree No.	Tree Species	Chinese Name	Size			Form (Good/ Fair/Poor)	Health condition (Good/ Fair/Poor)	Amenity value (High/ Medium/ Low)	Survival rate after (High / Medium / Low)	Recom- mendation (Retain/ Transplant/ Fell)	Remarks
			Overall Height (m)	Trunk Diameter (mm)	Crown Spread (m)						
T1080	<i>Livistona chinensis</i>	蒲葵	8.0	216	6.0	G	G	H	M	T	Affected by VP Reprovisioning Works - Option 2
T1081	<i>Roystonea regia</i>	王棕(大王椰子)	3.0	185	4.0	G	G	H	H	T	Affected by VP Reprovisioning Works - Option 2
T1082	<i>Livistona chinensis</i>	蒲葵	7.0	213	7.0	G	G	H	M	T	Affected by VP Reprovisioning Works - Option 2
T1083	<i>Livistona chinensis</i>	蒲葵	7.0	204	6.0	G	G	H	M	T	Affected by VP Reprovisioning Works - Option 2
T1084	<i>Livistona chinensis</i>	蒲葵	7.0	201	6.0	G	G	H	M	T	Affected by VP Reprovisioning Works - Option 2
T1085	<i>Roystonea regia</i>	王棕(大王椰子)	3.0	178	4.0	G	G	H	H	T	Affected by VP Reprovisioning Works - Option 2
T1087	<i>Ravenala madagascariensis</i>	旅人蕉	7.0	239	5.0	G	G	H	L	F	Affected by VP Reprovisioning Works - Option 2
T1091	Not Available		7.0	175	7.0						Affected by VP Reprovisioning Works - Option 2
T1097	Not Available		6.0	293	6.0						Affected by VP Reprovisioning Works - Option 2

**Table 2C - Trees which will be affected by Reprovisioning Works under Option 2
(Trunk Diameter > 300mm)**

Total no. of trees to be affected under Option 2 62
 Subtotal No. of trees 16
 No. of Trees to be transplanted 7
 No. of Trees to be felled 6
 Unknown 3

Tree No.	Tree Species	Chinese Name	Size			Form (Good/ Fair/Poor)	Health condition (Good/ Fair/Poor)	Amenity value (High/ Medium/ Low)	Survival rate after (High / Medium / Low)	Recom- mendation (Retain/ Transplant/ Fell)	Remarks
			Overall Height (m)	Trunk Diameter (mm)	Crown Spread (m)						
T279	<i>Acacia confusa</i>	台灣相思	12.0	392	10.0	F	P	L	L	F	Affected by VP Reprovisioning Works - Option 2
T284	<i>Acacia confusa</i>	台灣相思	12.5	535	20.0	F	F	M	L	F	Affected by VP Reprovisioning Works - Option 2
T285	<i>Elaeis guineensis</i>	油棕	13.0	551	5.0	G	G	H	M	T	Affected by VP Reprovisioning Works - Option 2
T286	<i>Elaeis guineensis</i>	油棕	13.0	579	4.0	G	G	H	M	T	Affected by VP Reprovisioning Works - Option 2
T287	<i>Elaeis guineensis</i>	油棕	14.0	541	6.0	G	G	H	M	T	Affected by VP Reprovisioning Works - Option 2
T288	<i>Ficus benjamina</i>	垂葉榕	13.0	446	8.0	G	G	H	M	T	Affected by VP Reprovisioning Works - Option 2
T289	<i>Elaeis guineensis</i>	油棕	9.0	589	4.5	G	G	H	M	T	Affected by VP Reprovisioning Works - Option 2
T290	<i>Bauhinia blakeana</i>	洋紫荊	11.0	392	10.0	F	F	M	M	T	Affected by VP Reprovisioning Works - Option 2
T291	<i>Celtis sinensis</i>	朴樹	13.0	321	11.0	G	G	H	M	T	Affected by VP Reprovisioning Works - Option 2
T1074	<i>Ravenala madagascariensis</i>	旅人蕉	5.0	306	4.0	G	G	H	L	F	Affected by VP Reprovisioning Works - Option 2
T1077	<i>Ravenala madagascariensis</i>	旅人蕉	7.0	350	7.0	G	G	H	L	F	Affected by VP Reprovisioning Works - Option 2
T1086	<i>Ravenala madagascariensis</i>	旅人蕉	8.0	321	4.0	G	G	H	L	F	Affected by VP Reprovisioning Works - Option 2
T1088	Not Available		10.0	452	12.0						Affected by VP Reprovisioning Works - Option 2
T1089	Not Available		8.0	371	7.0						Affected by VP Reprovisioning Works - Option 2
T1090	Not Available		8.0	398	8.0						Affected by VP Reprovisioning Works - Option 2
T1128	<i>Ravenala madagascariensis</i>	旅人蕉	6.0	318	4.0	G	G	H	L	F	Affected by VP Reprovisioning Works - Option 2

**Table 3A - Trees which will be affected by Reprovisioning Works under Option 3
(95mm < Trunk Diameter ≤ 150mm)**

Tree No.	Tree Species	Chinese Name	Size			Form (Good/ Fair/Poor)	Health condition (Good/ Fair/Poor)	Amenity value (High/ Medium/ Low)	Survival rate after (High / Medium / Low)	Recom- mendation (Retain/ Transplant/ Fell)	Remarks
			Overall Height (m)	Trunk Diameter (mm)	Crown Spread (m)						
T278	Ficus virens	大葉榕	7.5	143	5.0	F	P	L	L	F	Affected by VP Reprovisioning Works - Option 3
T280	Ficus virens	大葉榕	10.0	134	5.0	F	F	L	L	F	Affected by VP Reprovisioning Works - Option 3
T1000	Bauhinia variegata	宮粉羊蹄甲	8.0	140	6.0	G	F	M	M	T	Affected by VP Reprovisioning Works - Option 3
T1003	Bauhinia variegata	宮粉羊蹄甲	5.0	118	5.0	G	F	M	M	T	Affected by VP Reprovisioning Works - Option 3
T1004	Bauhinia variegata	宮粉羊蹄甲	5.0	121	6.0	G	F	M	M	T	Affected by VP Reprovisioning Works - Option 3
T1005	Bauhinia variegata	宮粉羊蹄甲	6.0	140	6.0	G	G	M	M	T	Affected by VP Reprovisioning Works - Option 3
T1006	Bauhinia variegata	宮粉羊蹄甲	5.0	146	5.0	F	F	M	M	T	Affected by VP Reprovisioning Works - Option 3
T1007	Bauhinia variegata	宮粉羊蹄甲	5.0	103	5.0	F	F	M	M	T	Affected by VP Reprovisioning Works - Option 3
T1008	Bauhinia variegata	宮粉羊蹄甲	5.0	100	5.0	F	F	M	M	T	Affected by VP Reprovisioning Works - Option 3
T1009	Bauhinia variegata	宮粉羊蹄甲	6.0	108	6.0	F	F	M	M	T	Affected by VP Reprovisioning Works - Option 3
T1010	Bauhinia variegata	宮粉羊蹄甲	6.0	111	6.0	F	F	M	M	T	Affected by VP Reprovisioning Works - Option 3
T1012	Cassia surattensis	黃槐	5.0	100	5.0	G	G	H	L	F	Affected by VP Reprovisioning Works - Option 3
T1092	Not Available		7.0	143	6.0						Affected by VP Reprovisioning Works - Option 3
T1093	Not Available		4.0	102	4.0						Affected by VP Reprovisioning Works - Option 3
T1095	Not Available		6.0	115	4.0						Affected by VP Reprovisioning Works - Option 3
T1096	Not Available		5.0	100	4.0						Affected by VP Reprovisioning Works - Option 3
T1100	Not Available		6.0	102	3.0						Affected by VP Reprovisioning Works - Option 3

Total no. of trees to be affected under Option 3

57

Subtotal No. of trees

17

No. of Trees to be transplanted

9

No. of Trees to be felled
unknown

3

5

**Table 3B - Trees which will be affected by Reprovisioning Works under Option 3
(150mm < Trunk Diameter ≤ 300mm)**

Tree No.	Tree Species	Chinese Name	Size		Form (Good/ Fair/Poor)	Health condition (Good/ Fair/Poor)	Amenity value (High/ Medium/ Low)	Survival rate after (High / Medium / Low)	Recom- mendation (Retain/ Transplant/ Fell)	Remarks
			Overall Height (m)	Trunk Diameter (mm)						
T281	Ficus virens	大葉榕	10.0	159	F	F	M	L	F	Affected by VP Reprovisioning Works - Option 3
T282	Ficus virens	大葉榕	10.0	202	F	F	M	L	F	Affected by VP Reprovisioning Works - Option 3
T283	Ficus virens	大葉榕	10.0	271	F	G	M	L	F	Affected by VP Reprovisioning Works - Option 3
T292	Macaranga tanarius	血梔	4.0	216	F	F	M	L	F	Affected by VP Reprovisioning Works - Option 3
T293	Liquidambar formosana	楓香 (楓樹)	9.0	169	P	F	L	L	F	Affected by VP Reprovisioning Works - Option 3
T998	Bauhinia variegata	宮粉羊蹄甲	7.0	153	G	F	M	M	T	Affected by VP Reprovisioning Works - Option 3
T999	Bauhinia variegata	宮粉羊蹄甲	6.0	151	G	F	M	M	T	Affected by VP Reprovisioning Works - Option 3
T1001	Bauhinia variegata	宮粉羊蹄甲	6.0	153	G	F	M	M	T	Affected by VP Reprovisioning Works - Option 3
T1002	Bauhinia variegata	宮粉羊蹄甲	5.0	169	G	P	L	M	F	Affected by VP Reprovisioning Works - Option 3
T1072	Ravenala madagascariensis	旅人蕉	5.0	290	G	G	H	L	F	Affected by VP Reprovisioning Works - Option 3
T1073	Ravenala madagascariensis	旅人蕉	4.0	242	G	G	H	L	F	Affected by VP Reprovisioning Works - Option 3
T1075	Ravenala madagascariensis	旅人蕉	5.0	226	G	G	H	L	F	Affected by VP Reprovisioning Works - Option 3
T1076	Ravenala madagascariensis	旅人蕉	5.0	242	G	G	H	L	F	Affected by VP Reprovisioning Works - Option 3
T1078	Ravenala madagascariensis	旅人蕉	7.0	296	G	G	H	L	F	Affected by VP Reprovisioning Works - Option 3
T1079	Roystonea regia	王棕(大王椰子)	4.0	175	G	G	H	H	T	Affected by VP Reprovisioning Works - Option 3
T1080	Livistona chinensis	蒲葵	8.0	216	G	G	H	M	T	Affected by VP Reprovisioning Works - Option 3
T1081	Roystonea regia	王棕(大王椰子)	3.0	185	G	G	H	H	T	Affected by VP Reprovisioning Works - Option 3
T1082	Livistona chinensis	蒲葵	7.0	213	G	G	H	M	T	Affected by VP Reprovisioning Works - Option 3
T1083	Livistona chinensis	蒲葵	7.0	204	G	G	H	M	T	Affected by VP Reprovisioning Works - Option 3
T1084	Livistona chinensis	蒲葵	7.0	201	G	G	H	M	T	Affected by VP Reprovisioning Works - Option 3

Total no. of trees to be affected under Option 3 57
Subtotal trees 24
No. of Trees to be transplanted 10
No. of Trees to be felled 12
unknown 2

**Table 3B - Trees which will be affected by Reprovisioning Works under Option 3
(150mm < Trunk Diameter ≤ 300mm)**

Tree No.	Tree Species	Chinese Name	Size			Form (Good/ Fair/Poor)	Health condition (Good/ Fair/Poor)	Amenity value (High/ Medium/ Low)	Survival rate after (High / Medium / Low)	Recom- mendation (Retain/ Transplant/ Fell)	Remarks
			Overall Height (m)	Trunk Diameter (mm)	Crown Spread (m)						
T1085	Roystonea regia	王棕(大王椰子)	3.0	178	4.0	G	G	H	H	T	Affected by VP Reprovisioning Works - Option 3
T1087	Ravenala madagascariensis	旅人蕉	7.0	239	5.0	G	G	H	L	F	Affected by VP Reprovisioning Works - Option 3
T1091	Not Available		7.0	175	7.0						Affected by VP Reprovisioning Works - Option 3
T1097	Not Available		6.0	293	6.0						Affected by VP Reprovisioning Works - Option 3
Total no. of trees to be affected under Option 3 57 Subtotal trees 24 No. of Trees to be transplanted 10 No. of Trees to be felled 12 unknown 2											

**Table 3C - Trees which will be affected by Reprovisioning Works under Option 3
(Trunk Diameter > 300mm)**

Total no. of trees to be affected under Option 3 57
 Subtotal No. of trees 16
 No. of Trees to be transplanted 7
 No. of Trees to be felled 6
 Unknown 3

Tree No.	Tree Species	Chinese Name	Size			Form (Good/ Fair/Poor)	Health condition (Good/ Fair/Poor)	Amenity value (High/ Medium/ Low)	Survival rate after (High / Medium / Low)	Recom- mendation (Retain/ Transplant/ Fell)	Remarks
			Overall Height (m)	Trunk Diameter (mm)	Crown Spread (m)						
T279	<i>Acacia confusa</i>	台灣相思	12.0	392	10.0	F	P	L	L	F	Affected by VP Reprovisioning Works - Option 3
T284	<i>Acacia confusa</i>	台灣相思	12.5	535	20.0	F	F	M	L	F	Affected by VP Reprovisioning Works - Option 3
T285	<i>Elaeis guineensis</i>	油棕	13.0	551	5.0	G	G	H	M	T	Affected by VP Reprovisioning Works - Option 3
T286	<i>Elaeis guineensis</i>	油棕	13.0	579	4.0	G	G	H	M	T	Affected by VP Reprovisioning Works - Option 3
T287	<i>Elaeis guineensis</i>	油棕	14.0	541	6.0	G	G	H	M	T	Affected by VP Reprovisioning Works - Option 3
T288	<i>Ficus benjamina</i>	垂葉榕	13.0	446	8.0	G	G	H	M	T	Affected by VP Reprovisioning Works - Option 3
T289	<i>Elaeis guineensis</i>	油棕	9.0	589	4.5	G	G	H	M	T	Affected by VP Reprovisioning Works - Option 3
T290	<i>Bauhinia blakeana</i>	洋紫荊	11.0	392	10.0	F	F	M	M	T	Affected by VP Reprovisioning Works - Option 3
T291	<i>Celtis sinensis</i>	朴樹	13.0	321	11.0	G	G	H	M	T	Affected by VP Reprovisioning Works - Option 3
T1074	<i>Ravenala madagascariensis</i>	旅人蕉	5.0	306	4.0	G	G	H	L	F	Affected by VP Reprovisioning Works - Option 3
T1077	<i>Ravenala madagascariensis</i>	旅人蕉	7.0	350	7.0	G	G	H	L	F	Affected by VP Reprovisioning Works - Option 3
T1086	<i>Ravenala madagascariensis</i>	旅人蕉	8.0	321	4.0	G	G	H	L	F	Affected by VP Reprovisioning Works - Option 3
T1088	Not Available		10.0	452	12.0						Affected by VP Reprovisioning Works - Option 3
T1089	Not Available		8.0	371	7.0						Affected by VP Reprovisioning Works - Option 3
T1090	Not Available		8.0	398	8.0						Affected by VP Reprovisioning Works - Option 3
T1128	<i>Ravenala madagascariensis</i>	旅人蕉	6.0	318	4.0	G	G	H	L	F	Affected by VP Reprovisioning Works - Option 3

**Table 4A - Trees which will be affected by Rejuvenation Works under Option 4
(95mm < Trunk Diameter ≤ 150mm)**

Total no. of trees to be affected under Option 4 84
 Subtotal No. of trees 32
 No. of Trees to be transplanted 21
 No. of Trees to be felled 11

Tree No.	Tree Species	Chinese Name	Size			Form (Good/ Fair/Poor)	Health condition (Good/ Fair/Poor)	Amenity value (High/ Medium/ Low)	Survival rate after (High / Medium / Low)	Recom- mendation (Retain/ Transplant/ Fell)	Remarks
			Overall Height (m)	Trunk Diameter (mm)	Crown Spread (m)						
T203	Bauhinia blakeana	洋紫荊	7.5	140	4.5	F	F	M	M	T	Court yard Garden Rejuvenation Works
T205	Bauhinia blakeana	洋紫荊	4.0	134	5.0	F	F	M	M	T	Court yard Garden Rejuvenation Works
T209	Bauhinia blakeana	洋紫荊	6.0	115	2.5	F	P	L	M	F	Bowling Green Rejuvenation Works
T210	Bauhinia blakeana	洋紫荊	3.0	115	4.0	F	F	M	M	T	Court yard Garden Rejuvenation Works
T211	Bauhinia blakeana	洋紫荊	5.0	121	5.5	P	F	L	M	F	Court yard Garden Rejuvenation Works
T212	Bauhinia blakeana	洋紫荊	8.0	146	7.0	F	F	M	M	T	Court yard Garden Rejuvenation Works
T213	Bauhinia blakeana	洋紫荊	7.0	118	6.0	F	F	M	M	T	Court yard Garden Rejuvenation Works
T214	Bauhinia blakeana	洋紫荊	7.0	127	7.0	F	F	M	M	T	Court yard Garden Rejuvenation Works
T215	Bauhinia blakeana	洋紫荊	5.0	127	4.0	F	F	M	M	T	Court yard Garden Rejuvenation Works
T236	Legrostroemia speciosa	洋紫荊(大花紫荊)	7.0	137	5.0	P	F	L	L	F	Court yard Garden Rejuvenation Works
T278	Ficus virens	大葉榕	7.5	143	5.0	F	P	L	L	F	Nursery Compound Rejuvenation Works
T280	Ficus virens	大葉榕	10.0	134	6.0	F	F	M	L	F	Nursery Compound Rejuvenation Works
T713	Bauhinia blakeana	洋紫荊	9.0	131	5.0	F	F	M	M	T	Bowling Green Rejuvenation Works
T715	Bauhinia blakeana	洋紫荊	5.0	121	6.0	F	F	M	M	T	Bowling Green Rejuvenation Works
T716	Bauhinia blakeana	洋紫荊	6.0	122	5.0	F	F	M	M	T	Bowling Green Rejuvenation Works
T717	Juniperus chinensis var. kaizuka	龍柏	5.0	137	3.5	G	G	H	L	F	Bowling Green Rejuvenation Works
T718	Delonix regia	鳳凰木	7.0	108	4.0	F	F	M	M	T	Bowling Green Rejuvenation Works
T719	Delonix regia	鳳凰木	7.0	124	4.0	F	F	M	M	T	Bowling Green Rejuvenation Works
T720	Delonix regia	鳳凰木	4.0	121	3.0	F	F	M	M	T	Bowling Green Rejuvenation Works

**Table 4A - Trees which will be affected by Reprvisioning Works under Option / A
(95mm < Trunk Diameter ≤ 150mm)**

Total no. of trees to be affected under Option 4 84
 Subtotal No. of trees 32
 No. of Trees to be transplanted 21
 No. of Trees to be felled 11

Tree No.	Tree Species	Chinese Name	Size			Form (Good/ Fair/Poor)	Health condition (Good/ Fair/Poor)	Amenity value (High/ Medium/ Low)	Survival rate after (High / Medium / Low)	Recom- mendation (Retain/ Transplant/ Fell)	Remarks
			Overall Height (m)	Trunk Diameter (mm)	Crown Spread (m)						
T721	<i>Juniperus chinensis</i> var. <i>kaizucoides</i>	龍柏	5.0	131	4.5	G	G	H	L	F	Bowling Green Reprvision Works
T723	<i>Juniperus chinensis</i> var. <i>kaizucoides</i>	龍柏	5.0	134	4.5	G	G	H	L	F	Bowling Green Reprvision Works
T724	<i>Juniperus chinensis</i> var. <i>kaizucoides</i>	龍柏	5.0	108	3.0	G	F	M	L	F	Bowling Green Reprvision Works
T728	<i>Erythrina variegata</i>	刺桐	6.0	105	4.0	G	F	M	M	T	Bowling Green Reprvision Works
T730	<i>Erythrina variegata</i>	刺桐	6.0	111	4.0	G	F	M	M	T	Bowling Green Reprvision Works
T734	<i>Erythrina variegata</i>	刺桐	6.0	111	4.0	G	G	H	M	T	Bowling Green Reprvision Works
T735	<i>Erythrina variegata</i>	刺桐	6.0	111	4.0	G	G	H	M	T	Bowling Green Reprvision Works
T736	<i>Erythrina variegata</i>	刺桐	6.0	111	4.0	G	F	M	M	T	Bowling Green Reprvision Works
T737	<i>Erythrina variegata</i>	刺桐	6.0	123	4.0	G	F	M	M	T	Bowling Green Reprvision Works
T763	<i>Ficus virens</i>	大葉榕	3.0	119	5.0	F	F	M	L	F	Court yard Garden Reprvision Works
T973	<i>Bauhinia blakeana</i>	洋紫荊	5.0	127	5.0	F	P	L	M	F	Court yard Garden Reprvision Works
T974	<i>Bauhinia blakeana</i>	洋紫荊	7.0	108	5.0	F	F	M	M	T	Court yard Garden Reprvision Works
T975	<i>Bauhinia blakeana</i>	洋紫荊	7.0	124	4.0	F	F	M	M	T	Court yard Garden Reprvision Works

**Table 4B - Trees which will be affected by Replanting Works under Option 4
(150mm < Trunk Diameter ≤ 300mm)**

Total no. of trees to be affected under Option 4
Subtotal trees
No. of Trees to be replanted
No. of Trees to be felled

84
36
18
18

Tree No.	Tree Species	Chinese Name	Size			Form (Good/ Fair/Poor)	Health condition (Good/ Fair/Poor)	Amenity value (High/ Medium/ Low)	Survival rate after (High / Medium / Low)	Recom- mendation (Retain/ Transplant/ Fell)	Remarks
			Overall Height (m)	Trunk Diameter (mm)	Crown Spread (m)						
T204	Bauhinia blakeana	洋紫荊	7.5	153	4.5	F	F	M	M	T	Replantation Works
T206	Bauhinia blakeana	洋紫荊	2.0	172	3.0	F	P	L	M	F	Replantation Works
T208	Ficus benjamina	垂葉榕	6.0	255	5.0	G	G	H	M	T	Replantation Works
T216	Melia azedarach	苦楝	8.0	239	8.0	F	G	M	M	T	Replantation Works
T219	Lagerstroemia speciosa	洋紫葳(大花紫葳)	7.0	175	6.0	F	G	M	L	F	Replantation Works
T222	Livistona chinensis	蒲葵	9.0	181	2.5	G	F	M	M	T	Replantation Works
T223	Livistona chinensis	蒲葵	7.0	207	4.0	G	G	H	M	T	Replantation Works
T224	Livistona chinensis	蒲葵	8.5	194	4.0	G	G	H	M	T	Replantation Works
T225	Livistona chinensis	蒲葵	7.0	172	2.0	G	G	H	M	T	Replantation Works
T226	Livistona chinensis	蒲葵	7.0	223	2.0	G	G	H	M	T	Replantation Works
T227	Livistona chinensis	蒲葵	9.0	229	4.0	G	G	H	M	T	Replantation Works
T228	Livistona chinensis	蒲葵	12.0	271	10.0	P	F	L	L	F	Replantation Works
T229	Grevillea robusta	銀樺	9.0	223	4.0	F	F	M	L	F	Replantation Works
T230	Livistona chinensis	蒲葵	1.8	159	3.0	G	G	H	M	T	Replantation Works
T234	Lagerstroemia speciosa	洋紫葳(大花紫葳)	7.0	166	3.0	F	P	L	L	F	Replantation Works
T235	Livistona chinensis	蒲葵	9.0	188	3.5	G	G	H	M	T	Replantation Works
T237	Livistona chinensis	蒲葵	10.0	232	4.0	P	G	L	M	F	Replantation Works
T281	Ficus virens	大葉榕	10.0	159	3.0	F	F	M	L	F	Replantation Works
T282	Ficus virens	大葉榕	10.0	202	8.0	F	F	M	L	F	Replantation Works
T283	Ficus virens	大葉榕	10.0	271	9.0	F	G	M	L	F	Replantation Works

**Table 4B - Trees which will be affected by Reprovisioning Works under Option 1A
(150mm < Trunk Diameter ≤ 300mm)**

Total no. of trees to be affected under Option 4
Subtotal trees
No. of Trees to be transplanted
No. of Trees to be felled

84
36
18
18

Tree No.	Tree Species	Chinese Name	Size			Form (Good/ Fair/Poor)	Health condition (Good/ Fair/Poor)	Amenity value (High/ Medium/ Low)	Survival rate after (High / Medium / Low)	Recom- mendation (Retain/ Transplant/ Fell)	Remarks
			Overall Height (m)	Trunk Diameter (mm)	Crown Spread (m)						
T292	Macaranga tanarius	血桐	4.0	216	9.0	F	F	M	L	F	Reprovision Works
T293	Liquidambar formosana	稠李 (槲栎)	9.0	169	7.0	P	F	L	L	F	Reprovision Works
T294	Liquidambar formosana	稠李 (槲栎)	9.0	194	6.0	F	F	M	L	F	Reprovision Works
T714	Cassia siamea	鋸刀木	11.0	220	9.0	F	F	M	L	F	Reprovision Works
T733	Michelia alba	白蘭	8.0	293	8.5	G	G	H	L	F	Reprovision Works
T757	Erythrina variegata	刺桐	6.0	197	5.0	G	G	H	M	T	Reprovision Works
T759	Erythrina variegata	刺桐	7.0	178	5.0	F	G	M	M	T	Reprovision Works
T769	Ficus microcarpa	細葉榕(榕樹)	5.0	200	3.0	F	F	M	M	T	Reprovision Works
T770	Ficus benjamina	垂葉榕	6.0	210	5.0	G	G	H	M	T	Reprovision Works
T777	Ficus benjamina	垂葉榕	6.0	286	7.0	G	G	H	M	T	Reprovision Works
T779	Ficus benjamina	垂葉榕	7.0	232	7.0	G	G	H	M	T	Reprovision Works
T977	Melia azedarach	苦楝	9.0	286	6.0	F	F	M	M	T	Reprovision Works
T1072	Ravenala madagascariensis	旅人蕉	5.0	290	4.0	G	G	H	L	F	Reprovision Works
T1073	Ravenala madagascariensis	旅人蕉	4.0	242	4.0	G	G	H	L	F	Reprovision Works
T1075	Ravenala madagascariensis	旅人蕉	5.0	226	4.0	G	G	H	L	F	Reprovision Works
T1075	Ravenala madagascariensis	旅人蕉	5.0	242	5.0	G	G	H	L	F	Reprovision Works

**Table 4C - Trees which will be affected by Reprovisioning Works under Option 1 A
(Trunk Diameter > 300mm)**

Total no. of trees to be affected under Option 4 84
 Subtotal No. of trees 16
 No. of Trees to be transplanted 11
 No. of Trees to be felled 5

Tree No.	Tree Species	Chinese Name	Size		Form (Good/ Fair/Poor)	Health condition (Good/ Fair/Poor)	Amenity value (High/ Medium/ Low)	Survival rate after (High / Medium / Low)	Recom- mendation (Retain/ Transplant/ Fell)	Remarks
			Overall Height (m)	Trunk Diameter (mm)						
T217	Melaleuca quinquenervia	白千層	12.0	312	G	G	H	M	T	Reprovisioning Works
T221	Delonix regia	鳳凰木	12.0	509	P	F	L	M	F	Reprovisioning Works
T279	Acacia confusa	台灣相思	12.0	392	F	P	L	L	F	Reprovisioning Works
T284	Acacia confusa	台灣相思	12.5	535	F	F	M	L	F	Reprovisioning Works
T285	Elaeis guineensis	油棕	13.0	551	G	G	H	M	T	Reprovisioning Works
T286	Elaeis guineensis	油棕	13.0	579	G	G	H	M	T	Reprovisioning Works
T287	Elaeis guineensis	油棕	14.0	541	G	G	H	M	T	Reprovisioning Works
T288	Ficus benjamina	垂葉榕	13.0	446	G	G	H	M	T	Reprovisioning Works
T289	Elaeis guineensis	油棕	9.0	589	G	G	H	M	T	Reprovisioning Works
T290	Bauhinia blakeana	洋紫荊	11.0	392	F	F	M	M	T	Reprovisioning Works
T291	Celtis sinensis	朴樹	13.0	321	G	G	H	M	T	Reprovisioning Works
T726	Delonix regia	鳳凰木	14.0	633	G	F	M	M	T	Reprovisioning Works
T733	Erythrina variegata	刺桐	11.0	379	F	P	L	M	F	Reprovisioning Works
T739	Delonix regia	鳳凰木	16.0	497	G	G	H	M	T	Reprovisioning Works
T758	Erythrina variegata	刺桐	9.0	446	F	G	M	M	T	Reprovisioning Works
T1074	Ravenala madagascariensis	旅人蕉	5.0	306	G	G	H	L	F	Reprovisioning Works

**Table 5A - Trees which will be affected by Road Works
(95mm < Trunk Diameter ≤ 150mm)**

Total no. of trees to be affected under Road Works
Subtotal No. of trees
No. of Trees to be transplanted
No. of Trees to be felled

216
60
21
39

Tree No.	Tree Species	Chinese Name	Size			Form (Good/ Fair/Poor)	Health condition (Good/ Fair/Poor)	Amenity value (High/ Medium/ Low)	Survival rate after (High / Medium / Low)	Recom- mendation (Retain/ Transplant/ Fell)	Remarks
			Overall Height (m)	Trunk Diameter (mm)	Crown Spread (m)						
T157	Ficus virens	大葉榕	6.5	111	5.0	F	P	L	L	F	Affected by proposed roadworks
T160	Ficus virens	大葉榕	5.5	115	4.0	F	F	M	L	F	Affected by proposed roadworks
T164	Ficus virens	大葉榕	5.0	115	3.5	F	F	M	L	F	Affected by proposed roadworks
T165	Ficus virens	大葉榕	6.0	127	4.5	F	F	M	L	F	Affected by proposed roadworks
T166	Ficus virens	大葉榕	5.5	118	4.5	F	F	M	L	F	Affected by proposed roadworks
T168	Ficus virens	大葉榕	6.0	111	2.0	G	G	H	L	F	Affected by proposed roadworks
T169	Lagerstroemia speciosa	洋紫葳(大花紫薇)	5.0	111	2.5	F	F	M	L	F	Affected by proposed roadworks
T173	Ficus virens	大葉榕	6.0	124	4.5	F	F	M	L	F	Affected by proposed roadworks
T175	Ficus virens	大葉榕	6.0	134	4.0	G	F	M	L	F	Affected by proposed roadworks
T177	Ficus virens	大葉榕	4.5	105	3.0	P	F	L	L	F	Affected by proposed roadworks
T181	Ficus virens	大葉榕	7.0	124	4.5	F	F	M	L	F	Affected by proposed roadworks
T185	Ficus virens	大葉榕	7.0	127	6.0	P	F	L	L	F	Affected by proposed roadworks
T187	Ficus virens	大葉榕	8.0	137	7.0	P	F	L	L	F	Affected by proposed roadworks
T251	Lagerstroemia speciosa	洋紫葳(大花紫薇)	7.0	102	4.0	P	F	L	L	F	Affected by proposed roadworks
T348	Bauhinia variegata	宮粉羊蹄甲	10.0	146	8.0	F	F	M	M	T	Affected by proposed roadworks
T349	Bauhinia variegata	宮粉羊蹄甲	10.0	121	7.0	F	F	M	M	T	Affected by proposed roadworks
T353	Bauhinia variegata	宮粉羊蹄甲	11.0	111	6.0	F	F	M	M	T	Affected by proposed roadworks
T354	Bauhinia variegata	宮粉羊蹄甲	12.0	137	7.5	F	F	M	M	T	Affected by proposed roadworks
T355	Bauhinia variegata	宮粉羊蹄甲	12.0	127	8.0	F	F	M	M	T	Affected by proposed roadworks
T356	Bauhinia variegata	宮粉羊蹄甲	12.0	134	8.0	F	F	M	M	T	Affected by proposed roadworks

**Table 5A - Trees which will be affected by Road Works
(95mm < Trunk Diameter ≤ 150mm)**

Total no. of trees to be affected under Road Works
Subtotal No. of trees
No. of Trees to be transplanted
No. of Trees to be felled

216
60
21
39

Tree No.	Tree Species	Chinese Name	Size			Form (Good/ Fair/Poor)	Health condition (Good/ Fair/Poor)	Amenity value (High/ Medium/ Low)	Survival rate after (High / Medium / Low)	Recom- mendation (Retain/ Transplant/ Fell)	Remarks
			Overall Height (m)	Trunk Diameter (mm)	Crown Spread (m)						
T374	Michelia alba	白蘭	7.0	115	3.0	G	F	M	L	F	Affected by proposed roadworks
T375	Michelia alba	白蘭	12.0	134	6.0	F	F	M	L	F	Affected by proposed roadworks
T376	Michelia alba	白蘭	10.0	127	9.0	G	G	H	L	F	Affected by proposed roadworks
T385	Lagerstromia speciosa	洋紫葳(大花紫葳)	8.0	111	6.0	F	F	M	L	F	Affected by proposed roadworks
T387	Michelia alba	白蘭	7.0	105	2.0	F	F	M	L	F	Affected by proposed roadworks
T388	Michelia alba	白蘭	7.0	121	2.0	F	F	M	L	F	Affected by proposed roadworks
T389	Michelia alba	白蘭	7.0	137	3.0	P	F	L	L	F	Affected by proposed roadworks
T393	Swietenia mahagoni	桃花心木	12.0	145	5.5	F	F	M	L	F	Affected by proposed roadworks
T394	Michelia alba	白蘭	7.0	131	2.0	P	P	L	L	F	Affected by proposed roadworks
T395	Michelia alba	白蘭	9.0	115	7.0	G	F	M	L	F	Affected by proposed roadworks
T396	Michelia alba	白蘭	12.0	108	7.0	G	F	M	L	F	Affected by proposed roadworks
T400	Michelia alba	白蘭	11.0	102	7.0	G	F	M	L	F	Affected by proposed roadworks
T401	Michelia alba	白蘭	7.0	115	3.0	G	F	M	L	F	Affected by proposed roadworks
T403	Michelia alba	白蘭	5.0	105	4.0	G	F	M	L	F	Affected by proposed roadworks
T432	Bauhinia variegata	宮粉羊蹄甲	10.0	115	8.0	F	F	M	M	T	Affected by proposed roadworks
T433	Bauhinia variegata	宮粉羊蹄甲	8.0	111	3.0	F	F	M	M	T	Affected by proposed roadworks
T434	Bauhinia variegata	宮粉羊蹄甲	9.0	121	5.0	F	F	M	M	T	Affected by proposed roadworks
T439	Delonix regia	鳳凰木	9.0	137	8.0	P	F	L	M	F	Affected by proposed roadworks
T440	Bauhinia variegata	宮粉羊蹄甲	8.0	118	8.0	F	F	M	M	T	Affected by proposed roadworks
T441	Bauhinia variegata	宮粉羊蹄甲	10.0	143	8.0	F	F	M	M	T	Affected by proposed roadworks

**Table 5A - Trees which will be affected by Road Works
(95mm < Trunk Diameter ≤ 150mm)**

Total no. of trees to be affected under Road Works
Subtotal No. of trees
No. of Trees to be transplanted
No. of Trees to be felled

216
60
21
39

Tree No.	Tree Species	Chinese Name	Size			Form (Good/ Fair/Poor)	Health condition (Good/ Fair/Poor)	Amenity value (High/ Medium/ Low)	Survival rate after (High / Medium / Low)	Recom- mendation (Retain/ Transplant/ Fell)	Remarks
			Overall Height (m)	Trunk Diameter (mm)	Crown Spread (m)						
T442	Bauhinia variegata	宮粉羊蹄甲	11.0	124	9.0	F	F	M	M	T	Affected by proposed roadworks
T445	Bauhinia variegata	宮粉羊蹄甲	9.0	131	9.0	F	F	M	M	T	Affected by proposed roadworks
T447	Bauhinia variegata	宮粉羊蹄甲	10.0	99	8.0	F	F	M	M	T	Affected by proposed roadworks
T491	Aleurites moluccana	石栗	8.0	137	4.0	F	F	M	M	T	Affected by proposed roadworks
T492	Aleurites moluccana	石栗	11.0	150	8.0	F	F	M	M	T	Affected by proposed roadworks
T494	Aleurites moluccana	石栗	12.0	134	8.0	F	F	M	M	T	Affected by proposed roadworks
T573	Spathodea campanulata	火焰樹	6.0	110	3.0	F	F	M	L	F	Affected by proposed roadworks
T577	Spathodea campanulata	火焰樹	6.0	145	5.0	F	P	L	L	F	Affected by proposed roadworks
T581	Spathodea campanulata	火焰樹	7.0	150	3.0	F	F	M	L	F	Affected by proposed roadworks
T584	Spathodea campanulata	火焰樹	7.0	121	4.0	F	F	M	L	F	Affected by proposed roadworks
T603	Delonix regia	鳳凰木	4.0	95	1.0	F	F	M	M	T	Affected by proposed roadworks
T604	Melaleuca quinquenervia	白千層	6.0	134	2.0	F	F	M	M	T	Affected by proposed roadworks
T605	Delonix regia	鳳凰木	5.0	108	2.0	F	F	M	M	T	Affected by proposed roadworks
T606	Delonix regia	鳳凰木	5.0	99	1.0	F	F	M	M	T	Affected by proposed roadworks
T610	Ficus virens	大葉榕	5.0	142	4.0	F	F	M	L	F	Affected by proposed roadworks
T1990	Plumeria rubra	雞蛋花	5.0	100	3.0	F	F	M	L	F	Affected by proposed roadworks
T1992	Plumeria rubra	雞蛋花	5.0	100	3.0	F	F	M	L	F	Affected by proposed roadworks
T1994	Plumeria rubra	雞蛋花	4.0	100	3.0	F	F	M	L	F	Affected by proposed roadworks
T1995	Plumeria rubra	雞蛋花	4.0	100	3.0	F	F	M	L	F	Affected by proposed roadworks
T1996	Plumeria rubra	雞蛋花	4.0	120	4.0	F	F	M	L	F	Affected by proposed roadworks

**Table 5B - Trees which will be affected by Road Works
(150mm < Trunk Diameter ≤ 300mm)**

Total no. of trees to be affected under Road Works
Subtotal No. of trees
No. of Trees to be transplanted
No. of Trees to be felled

216
117
45
72

Tree No.	Tree Species	Chinese Name	Size			Form (Good/ Fair/Poor)	Health condition (Good/ Fair/Poor)	Amenity value (High/ Medium/ Low)	Survival rate after (High / Medium / Low)	Recom- mendation (Retain/ Transplant/ Fell)	Remarks
			Overall Height (m)	Trunk Diameter (mm)	Crown Spread (m)						
T109	Livistona chinensis	蒲葵	5.5	197	5.0	G	P	L	M	F	Affected by proposed roadworks
T110	Livistona chinensis	蒲葵	4.5	213	4.5	G	P	L	M	F	Affected by proposed roadworks
T111	Livistona chinensis	蒲葵	6.0	239	5.0	G	G	H	M	T	Affected by proposed roadworks
T112	Livistona chinensis	蒲葵	4.5	191	4.5	G	G	H	M	T	Affected by proposed roadworks
T113	Livistona chinensis	蒲葵	6.0	207	5.0	G	G	H	M	T	Affected by proposed roadworks
T114	Livistona chinensis	蒲葵	5.5	223	5.0	G	F	M	M	T	Affected by proposed roadworks
T115	Livistona chinensis	蒲葵	5.5	204	5.0	G	G	H	M	T	Affected by proposed roadworks
T116	Livistona chinensis	蒲葵	5.0	201	5.0	G	F	M	M	T	Affected by proposed roadworks
T117	Livistona chinensis	蒲葵	5.0	191	5.0	G	F	M	M	T	Affected by proposed roadworks
T118	Livistona chinensis	蒲葵	5.0	207	5.0	G	G	H	M	T	Affected by proposed roadworks
T119	Livistona chinensis	蒲葵	5.0	201	5.0	G	G	H	M	T	Affected by proposed roadworks
T120	Livistona chinensis	蒲葵	5.0	223	5.0	G	G	H	M	T	Affected by proposed roadworks
T121	Livistona chinensis	蒲葵	5.0	216	5.0	G	G	H	M	T	Affected by proposed roadworks
T122	Livistona chinensis	蒲葵	5.5	223	5.0	G	G	H	M	T	Affected by proposed roadworks
T123	Livistona chinensis	蒲葵	5.5	191	5.0	G	G	H	M	T	Affected by proposed roadworks
T124	Livistona chinensis	蒲葵	6.0	197	5.0	G	G	H	M	T	Affected by proposed roadworks
T125	Livistona chinensis	蒲葵	5.0	194	4.5	G	G	H	M	T	Affected by proposed roadworks
T126	Livistona chinensis	蒲葵	6.5	204	5.0	G	G	H	M	T	Affected by proposed roadworks
T127	Livistona chinensis	蒲葵	4.5	194	4.5	G	G	H	M	T	Affected by proposed roadworks
T128	Livistona chinensis	蒲葵	4.5	197	4.5	G	G	H	M	T	Affected by proposed roadworks

**Table 5B - Trees which will be affected by Road Works
(150mm < Trunk Diameter ≤ 300mm)**

Total no. of trees to be affected under Road Works
Subtotal No. of trees
No. of Trees to be transplanted
No. of Trees to be felled

216
117
45
72

Tree No.	Tree Species	Chinese Name	Size			Form (Good/ Fair/Poor)	Health condition (Good/ Fair/Poor)	Amenity value (High/ Medium/ Low)	Survival rate after (High / Medium / Low)	Recom- mendation (Retain/ Transplant/ Fell)	Remarks
			Overall Height (m)	Trunk Diameter (mm)	Crown Spread (m)						
T130	<i>Erythrina variegata</i>	刺桐	7.0	172	6.0	P	F	L	M	F	Affected by proposed roadworks
T159	<i>Mangifera indica</i>	杧果	9.0	229	7.0	G	G	H	L	F	Affected by proposed roadworks
T161	<i>Mangifera indica</i>	杧果	6.5	197	5.5	F	F	M	L	F	Affected by proposed roadworks
T162	<i>Ficus virens</i>	大葉榕	6.5	153	6.0	F	F	M	L	F	Affected by proposed roadworks
T163	<i>Ficus virens</i>	大葉榕	8.0	178	5.5	F	F	M	L	F	Affected by proposed roadworks
T171	<i>Ficus virens</i>	大葉榕	7.0	153	5.0	F	F	M	L	F	Affected by proposed roadworks
T172	<i>Ficus virens</i>	大葉榕	5.5	169	5.0	F	F	M	L	F	Affected by proposed roadworks
T174	<i>Ficus virens</i>	大葉榕	6.5	159	3.5	F	F	M	L	F	Affected by proposed roadworks
T176	<i>Ficus virens</i>	大葉榕	7.0	156	2.5	F	F	M	L	F	Affected by proposed roadworks
T178	<i>Ficus virens</i>	大葉榕	5.5	169	4.5	F	F	M	L	F	Affected by proposed roadworks
T180	<i>Ficus virens</i>	大葉榕	9.5	223	7.0	G	G	H	L	F	Affected by proposed roadworks
T182	<i>Ficus virens</i>	大葉榕	9.5	172	5.5	F	F	M	L	F	Affected by proposed roadworks
T183	<i>Ficus virens</i>	大葉榕	8.0	204	7.0	F	F	M	L	F	Affected by proposed roadworks
T184	<i>Melia azadirach</i>	苦楝	10.0	299	8.0	P	F	L	M	F	Affected by proposed roadworks
T186	<i>Ficus virens</i>	大葉榕	7.0	159	7.0	F	F	M	L	F	Affected by proposed roadworks
T233	<i>Aleurites moluccana</i>	石栗	12.0	251	6.0	G	G	H	M	T	Affected by proposed roadworks
T239	<i>Livistona chinensis</i>	蒲葵	10.0	204	4.0	G	G	H	M	T	Affected by proposed roadworks
T240	<i>Livistona chinensis</i>	蒲葵	10.0	197	3.0	G	G	H	M	T	Affected by proposed roadworks
T241	<i>Lagerstroemia speciosa</i>	洋紫微(大花紫薇)	8.0	220	5.0	G	P	L	L	F	Affected by proposed roadworks
T242	<i>Livistona chinensis</i>	蒲葵	11.0	197	3.0	G	G	H	M	T	Affected by proposed roadworks

**Table 5B - Trees which will be affected by Road Works
(150mm < Trunk Diameter ≤ 300mm)**

Total no. of trees to be affected under Road Works
Subtotal No. of trees
No. of Trees to be transplanted
No. of Trees to be felled

216
117
45
72

Tree No.	Tree Species	Chinese Name	Size			Form (Good/ Fair/Poor)	Health condition (Good/ Fair/Poor)	Amenity value (High/ Medium/ Low)	Survival rate after (High / Medium / Low)	Recom- mendation (Retain/ Transplant/ Fell)	Remarks
			Overall Height (m)	Trunk Diameter (mm)	Crown Spread (m)						
T243	Lagerstroemia speciosa	洋紫微(大花紫微)	9.0	172	6.0	F	F	M	L	F	Affected by proposed roadworks
T244	Livistona chinensis	蒲葵	9.0	213	3.0	G	G	H	M	T	Affected by proposed roadworks
T246	Livistona chinensis	蒲葵	10.0	207	3.0	G	F	M	M	T	Affected by proposed roadworks
T247	Lagerstroemia speciosa	洋紫微(大花紫微)	9.0	210	7.0	F	F	M	L	F	Affected by proposed roadworks
T248	Livistona chinensis	蒲葵	11.0	213	4.0	G	G	H	M	T	Affected by proposed roadworks
T249	Delonix regia	鳳凰木	12.0	255	9.0	F	P	L	M	F	Affected by proposed roadworks
T250	Livistona chinensis	蒲葵	10.0	185	3.0	G	G	H	M	T	Affected by proposed roadworks
T252	Livistona chinensis	蒲葵	11.0	201	2.5	G	G	H	M	T	Affected by proposed roadworks
T253	Lagerstroemia speciosa	洋紫微(大花紫微)	9.0	159	6.5	F	F	M	L	F	Affected by proposed roadworks
T254	Lagerstroemia speciosa	洋紫微(大花紫微)	11.0	204	7.0	F	F	M	L	F	Affected by proposed roadworks
T255	Livistona chinensis	蒲葵	9.0	194	3.0	F	G	M	M	T	Affected by proposed roadworks
T256	Ficus virens	大葉榕	11.0	159	5.0	F	F	M	L	F	Affected by proposed roadworks
T257	Lagerstroemia speciosa	洋紫微(大花紫微)	10.0	232	7.0	P	F	L	L	F	Affected by proposed roadworks
T258	Livistona chinensis	蒲葵	6.5	188	3.0	G	G	H	M	T	Affected by proposed roadworks
T261	Livistona chinensis	蒲葵	7.0	197	4.0	G	G	H	M	T	Affected by proposed roadworks
T262	Livistona chinensis	蒲葵	7.0	204	3.0	G	G	H	M	T	Affected by proposed roadworks
T264	Livistona chinensis	蒲葵	7.0	181	2.0	F	G	M	M	T	Affected by proposed roadworks
T272	Ficus virens	大葉榕	8.0	159	4.0	F	F	M	L	F	Affected by proposed roadworks
T273	Ficus virens	大葉榕	10.0	197	8.0	F	F	M	L	F	Affected by proposed roadworks
T274	Ficus virens	大葉榕	10.0	185	8.0	F	F	M	L	F	Affected by proposed roadworks

**Table 5B - Trees which will be affected by Road Works
(150mm < Trunk Diameter ≤ 300mm)**

Total no. of trees to be affected under Road Works
Subtotal No. of trees
No. of Trees to be transplanted
No. of Trees to be felled

216
117
45
72

Tree No.	Tree Species	Chinese Name	Size			Form (Good/ Fair/Poor)	Health condition (Good/ Fair/Poor)	Amenity value (High/ Medium/ Low)	Survival rate after (High / Medium / Low)	Recom- mendation (Retain/ Transplant/ Fell)	Remarks
			Overall Height (m)	Trunk Diameter (mm)	Crown Spread (m)						
T275	Ficus virens	大葉榕	10.0	197	7.0	F	F	M	L	F	Affected by proposed roadworks
T357	Bauhinia variegata	官粉洋躑躅	12.0	191	9.0	F	P	L	M	F	Affected by proposed roadworks
T361	Grevillea robusta	銀樺	7.0	191	6.0	F	F	M	L	F	Affected by proposed roadworks
T368	Delonix regia	鳳凰木	12.0	194	7.0	F	F	M	M	T	Affected by proposed roadworks
T384	Lagerstroemia speciosa	洋紫微(大花紫微)	12.0	299	10.0	F	F	M	L	F	Affected by proposed roadworks
T390	Swietenia mahagoni	桃花心木	8.0	153	3.0	F	F	M	L	F	Affected by proposed roadworks
T391	Lagerstroemia speciosa	洋紫微(大花紫微)	5.0	185	4.0	F	G	M	L	F	Affected by proposed roadworks
T392	Lagerstroemia speciosa	洋紫微(大花紫微)	5.0	201	4.0	F	G	M	L	F	Affected by proposed roadworks
T397	Michelia alba	白蘭	7.0	156	2.0	G	F	M	L	F	Affected by proposed roadworks
T425	Cinnamomum camphora	樟樹	7.0	191	3.0	P	P	L	L	F	Affected by proposed roadworks
T427	Cinnamomum camphora	樟樹	7.0	191	4.0	P	P	L	L	F	Affected by proposed roadworks
T430	Delonix regia	鳳凰木	8.0	248	8.0	F	P	L	M	F	Affected by proposed roadworks
T431	Crataeva trilobata	鈍葉魚木(魚木)	6.0	151	6.0	F	F	M	L	F	Affected by proposed roadworks
T436	Delonix regia	鳳凰木	8.0	162	4.0	P	F	L	M	F	Affected by proposed roadworks
T437	Delonix regia	鳳凰木	12.0	194	8.0	F	F	M	M	T	Affected by proposed roadworks
T438	Delonix regia	鳳凰木	7.0	274	5.0	F	F	M	M	T	Affected by proposed roadworks
T448	Delonix regia	鳳凰木	8.0	232	6.0	P	F	L	M	F	Affected by proposed roadworks
T449	Crataeva unifolcularis	樹頭菜	8.0	255	8.0	F	F	M	L	F	Affected by proposed roadworks
T455	Delonix regia	鳳凰木	10.0	232	8.0	F	F	M	M	T	Affected by proposed roadworks
T484	Hibiscus tiliaceus	黃槿	8.0	165	8.0	F	F	M	L	F	Affected by proposed roadworks

**Table 5B - Trees which will be affected by Road Works
(150mm < Trunk Diameter ≤ 300mm)**

Total no. of trees to be affected under Road Works
Subtotal No. of trees
No. of Trees to be transplanted
No. of Trees to be felled

216
117
45
72

Tree No.	Tree Species	Chinese Name	Size			Form (Good/ Fair/Poor)	Health condition (Good/ Fair/Poor)	Amenity value (High/ Medium/ Low)	Survival rate after (High / Medium / Low)	Recom- mendation (Retain/ Transplant/ Fell)	Remarks
			Overall Height (m)	Trunk Diameter (mm)	Crown Spread (m)						
T485	Hibiscus tiliaceus	黃槿	8.0	159	8.0	F	F	M	L	F	Affected by proposed roadworks
T488	Crateva trifoliata	鈍葉魚木(魚木)	7.0	204	4.0	F	F	M	L	F	Affected by proposed roadworks
T493	Crateva trifoliata	鈍葉魚木(魚木)	8.0	166	6.0	F	G	M	L	F	Affected by proposed roadworks
T502	Crateva trifoliata	鈍葉魚木(魚木)	8.0	223	5.0	G	F	M	L	F	Affected by proposed roadworks
T503	Crateva trifoliata	鈍葉魚木(魚木)	8.0	236	6.0	G	F	M	L	F	Affected by proposed roadworks
T504	Crateva trifoliata	鈍葉魚木(魚木)	8.0	229	5.0	G	F	M	L	F	Affected by proposed roadworks
T505	Crateva trifoliata	鈍葉魚木(魚木)	7.0	158	6.5	G	F	M	L	F	Affected by proposed roadworks
T523	Callistemon viminalis	串錢柳	7.0	220	3.0	P	P	L	L	F	Affected by proposed roadworks
T568	Delonix regia	鳳凰木	8.0	162	5.0	F	F	M	M	T	Affected by proposed roadworks
T569	Delonix regia	鳳凰木	8.0	201	5.0	F	F	M	M	T	Affected by proposed roadworks
T570	Spathodea campanulata	火焰樹	8.0	162	5.0	F	F	M	L	F	Affected by proposed roadworks
T571	Spathodea campanulata	火焰樹	6.0	159	5.0	F	F	M	L	F	Affected by proposed roadworks
T572	Spathodea campanulata	火焰樹	8.0	201	8.0	F	P	L	L	F	Affected by proposed roadworks
T574	Acacia confusa	台灣相思	10.0	299	10.0	F	F	M	L	F	Affected by proposed roadworks
T576	Spathodea campanulata	火焰樹	7.0	185	5.0	F	F	M	L	F	Affected by proposed roadworks
T578	Spathodea campanulata	火焰樹	7.0	202	5.0	F	F	M	L	F	Affected by proposed roadworks
T579	Spathodea campanulata	火焰樹	7.0	178	5.0	F	G	M	L	F	Affected by proposed roadworks
T580	Spathodea campanulata	火焰樹	11.0	159	8.0	F	F	M	L	F	Affected by proposed roadworks
T582	Acacia confusa	台灣相思	10.0	274	8.0	F	P	L	L	F	Affected by proposed roadworks
T585	Spathodea campanulata	火焰樹	9.0	280	6.0	F	F	M	L	F	Affected by proposed roadworks

**Table 5B - Trees which will be affected by Road Works
(150mm < Trunk Diameter ≤ 300mm)**

Total no. of trees to be affected under Road Works
Subtotal No. of trees
No. of Trees to be transplanted
No. of Trees to be felled

216
117
45
72

Tree No.	Tree Species	Chinese Name	Size			Form (Good/ Fair/Poor)	Health condition (Good/ Fair/Poor)	Amenity value (High/ Medium/ Low)	Survival rate after (High / Medium / Low)	Recom- mendation (Retain/ Transplant/ Fell)	Remarks
			Overall Height (m)	Trunk Diameter (mm)	Crown Spread (m)						
T586	Aleurites moluccana	石栗	7.0	156	5.0	F	F	M	M	T	Affected by proposed roadworks
T587	Aleurites moluccana	石栗	7.0	151	3.0	F	F	M	M	T	Affected by proposed roadworks
T607	Ficus virens	大葉榕	6.0	204	5.0	F	G	M	L	F	Affected by proposed roadworks
T608	Ficus virens	大葉榕	6.0	197	5.0	F	G	M	L	F	Affected by proposed roadworks
T609	Ficus virens	大葉榕	5.0	213	2.0	F	F	M	L	F	Affected by proposed roadworks
T611	Ficus virens	大葉榕	5.0	165	3.0	F	F	M	L	F	Affected by proposed roadworks
T612	Ficus virens	大葉榕	7.0	191	4.0	F	F	M	L	F	Affected by proposed roadworks
T613	Ficus virens	大葉榕	8.0	229	6.0	G	F	M	L	F	Affected by proposed roadworks
T614	Ficus virens	大葉榕	8.0	242	6.0	F	G	M	L	F	Affected by proposed roadworks
T615	Ficus virens	大葉榕	7.0	188	5.0	G	F	M	L	F	Affected by proposed roadworks
T616	Spathodea campanulata	火焰樹	7.0	178	5.0	F	G	M	L	F	Affected by proposed roadworks
T617	Spathodea campanulata	火焰樹	7.0	151	3.0	F	F	M	L	F	Affected by proposed roadworks
T618	Bauhinia variegata	宮粉羊蹄甲	6.0	271	3.0	G	F	M	M	T	Affected by proposed roadworks
T1129	Livistona chinensis	蒲葵	3.0	251	4.0	F	F	M	M	T	Affected by proposed roadworks
T1131	Livistona chinensis	蒲葵	4.0	299	5.0	F	F	M	M	T	Affected by proposed roadworks
T1132	Livistona chinensis	蒲葵	3.0	255	4.0	F	F	M	M	T	Affected by proposed roadworks
T1133	Livistona chinensis	蒲葵	5.0	261	4.0	F	F	M	M	T	Affected by proposed roadworks

**Table 5C - Trees which will be affected by Road Works
(Trunk Diameter > 300mm)**

Total no. of trees to be affected under Road Works
Subtotal No. of trees
No. of Trees to be transplanted
No. of Trees to be felled

216
39
17
22

Tree No.	Tree Species	Chinese Name	Size			Form (Good/ Fair/Poor)	Health condition (Good/ Fair/Poor)	Amenity value (High/ Medium/ Low)	Survival rate after (High / Medium / Low)	Recom- mendation (Retain/ Transplant/ Fell)	Remarks
			Overall Height (m)	Trunk Diameter (mm)	Crown Spread (m)						
T129	<i>Erythrina variegata</i>	刺桐	7.0	420	7.0	F	F	M	M	T	Affected by proposed roadworks
T131	<i>Acacia confusa</i>	台灣相思	11.0	436	10.0	F	P	L	L	F	Affected by proposed roadworks
T132	<i>Acacia confusa</i>	台灣相思	12.0	713	12.0	F	G	M	L	F	Affected by proposed roadworks
T133	<i>Crateva trifoliata</i>	刺葉魚木(魯木)	11.0	497	12.0	F	F	M	L	F	Affected by proposed roadworks
T134	<i>Macaranga tanarius</i>	血桐	8.0	541	8.5	P	F	L	L	F	Affected by proposed roadworks
T167	<i>Casuarina equisetifolia</i>	木麻黃	18.0	624	12.0	F	G	M	L	F	Affected by proposed roadworks
T179	<i>Elaeis guineensis</i>	油棕	9.0	700	6.0	F	F	M	M	T	Affected by proposed roadworks
T188	<i>Elaeis guineensis</i>	油棕	8.5	796	7.0	G	G	H	M	T	Affected by proposed roadworks
T189	<i>Elaeis guineensis</i>	油棕	8.5	675	7.0	G	G	H	M	T	Affected by proposed roadworks
T190	<i>Elaeis guineensis</i>	油棕	8.5	653	7.0	G	G	H	M	T	Affected by proposed roadworks
T238	<i>Acacia confusa</i>	台灣相思	12.0	455	11.0	P	F	L	L	F	Affected by proposed roadworks
T245	<i>Delonix regia</i>	鳳凰木	12.0	363	10.0	F	G	M	M	T	Affected by proposed roadworks
T271	<i>Acacia confusa</i>	台灣相思	11.5	490	11.0	F	F	M	L	F	Affected by proposed roadworks
T358	<i>Delonix regia</i>	鳳凰木	12.0	554	13.0	G	G	H	M	T	Affected by proposed roadworks
T362	<i>Aleurites moluccana</i>	石栗	12.0	357	8.0	G	G	H	M	T	Affected by proposed roadworks
T363	<i>Aleurites moluccana</i>	石栗	14.0	366	8.0	G	G	H	M	T	Affected by proposed roadworks
T367	<i>Aleurites moluccana</i>	石栗	12.0	477	8.0	G	G	H	M	T	Affected by proposed roadworks
T380	<i>Albizia lebbek</i>	大葉合歡	14.0	738	14.0	G	G	H	M	T	Affected by proposed roadworks
T385	<i>Eucalyptus robusta</i>	大葉桉	15.0	334	12.0	G	G	H	L	F	Affected by proposed roadworks
T404	<i>Acacia confusa</i>	台灣相思	8.0	302	3.0	F	P	L	L	F	Affected by proposed roadworks

**Table 5C - Trees which will be affected by Road Works
(Trunk Diameter > 300mm)**





Total no. of trees to be affected under Road Works
Subtotal No. of trees
No. of Trees to be transplanted
No. of Trees to be felled

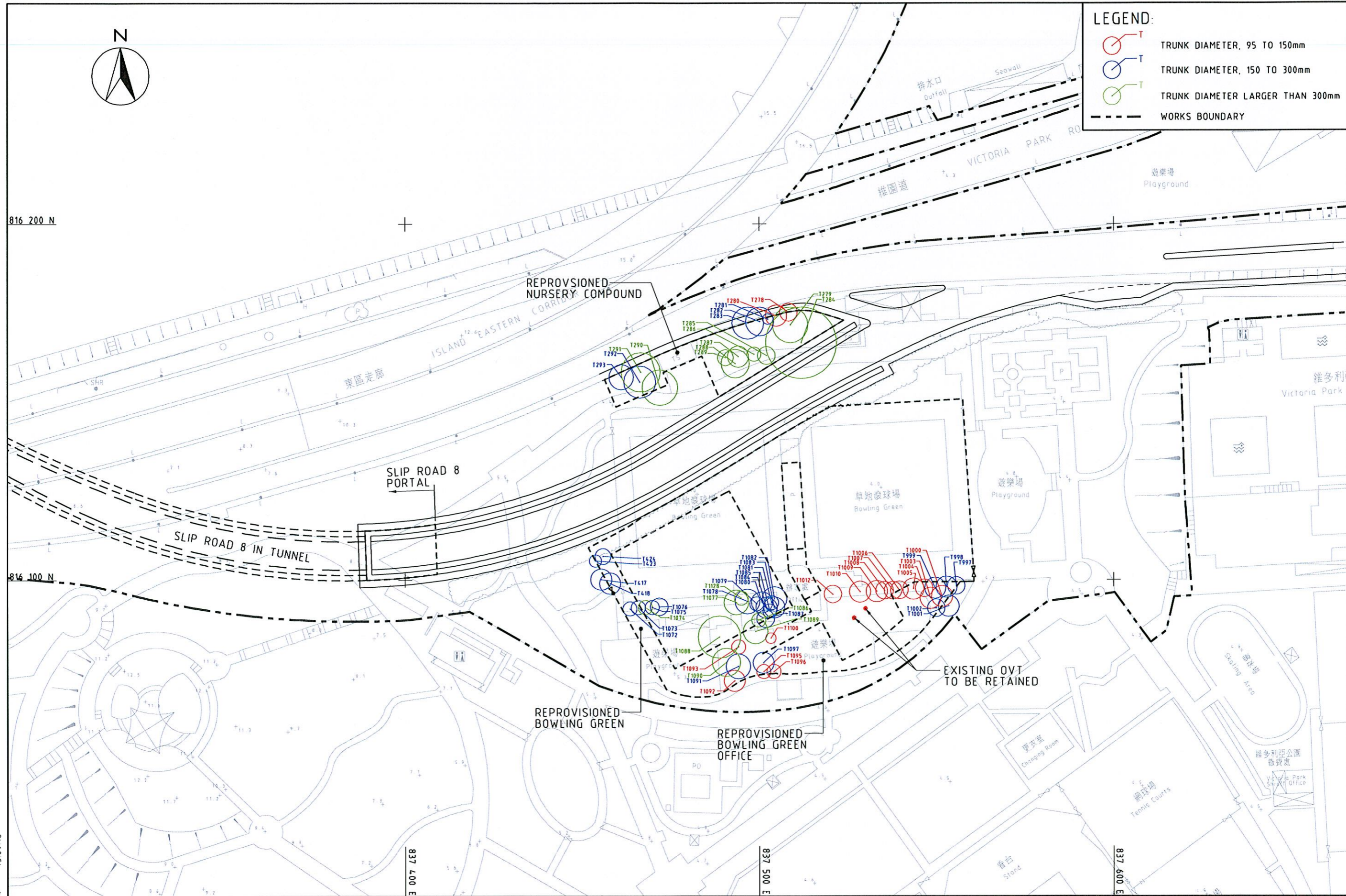
216
39
17
22

Tree No.	Tree Species	Chinese Name	Size			Form (Good/ Fair/Poor)	Health condition (Good/ Fair/Poor)	Amenity value (High/ Medium/ Low)	Survival rate after (High / Medium / Low)	Recom- mendation (Retain/ Transplant/ Fell)	Remarks
			Overall Height (m)	Trunk Diameter (mm)	Crown Spread (m)						
T405	<i>Acacia confusa</i>	台灣相思	8.0	331	4.0	P	P	L	L	F	Affected by proposed roadworks
T425	<i>Lagerstroemia speciosa</i>	洋紫薇(大花紫薇)	10.0	376	10.0	G	G	H	L	F	Affected by proposed roadworks
T429	<i>Delonix regia</i>	鳳凰木	12.0	337	12.0	F	F	M	M	T	Affected by proposed roadworks
T444	<i>Delonix regia</i>	鳳凰木	8.0	306	5.0	F	F	M	M	T	Affected by proposed roadworks
T450	<i>Melaleuca quinquenervia</i>	白千層	12.0	579	10.0	G	F	M	M	T	Affected by proposed roadworks
T451	<i>Taxodium distichum</i>	落羽杉	15.0	621	12.0	G	G	H	L	F	Affected by proposed roadworks
T452	<i>Ficus virens</i>	大葉榕	17.0	751	15.0	G	G	H	L	F	Affected by proposed roadworks
T453	<i>Ficus virens</i>	大葉榕	13.0	801	20.0	G	G	H	L	F	Affected by proposed roadworks
T486	<i>Cratogeomys trifoliata</i>	鈍葉魚木(魚木)	7.0	302	6.0	G	F	M	L	F	Affected by proposed roadworks
T487	<i>Ficus elastica</i>	印度橡樹	10.0	312	7.0	G	F	M	L	F	Affected by proposed roadworks
T489	<i>Ficus elastica</i>	印度橡樹	10.0	331	7.0	F	F	M	L	F	Affected by proposed roadworks
T490	<i>Eucalyptus robusta</i>	大葉桉	12.0	643	7.0	F	F	M	L	F	Affected by proposed roadworks
T496	<i>Aleurites moluccana</i>	石栗	13.0	433	15.0	G	G	H	M	T	Affected by proposed roadworks
T497	<i>Casuarina equisetifolia</i>	木麻薯	15.0	535	15.0	G	G	H	L	F	Affected by proposed roadworks
T575	<i>Eucalyptus camaldulensis</i>	赤桉	12.0	452	10.0	G	G	H	L	F	Affected by proposed roadworks
T619	<i>Cratogeomys trifoliata</i>	鈍葉魚木(魚木)	8.0	500	8.0	F	G	M	L	F	Affected by proposed roadworks
T621	<i>Cratogeomys trifoliata</i>	鈍葉魚木(魚木)	10.0	557	10.0	G	F	M	L	F	Affected by proposed roadworks
T1106	<i>Bombax ceiba</i>	木棉	13.0	414	8.0	F	F	M	M	T	Affected by proposed roadworks
T1130	<i>Livistona chinensis</i>	蒲葵	3.0	302	4.0	F	F	M	M	T	Affected by proposed roadworks



LEGEND:

-  TRUNK DIAMETER, 95 TO 150mm
-  TRUNK DIAMETER, 150 TO 300mm
-  TRUNK DIAMETER LARGER THAN 300mm
-  WORKS BOUNDARY



DATE: 2007-9-14 15:09:18

MAUNSELL | **AFCOM**
Maunsell Consultants Asia Ltd

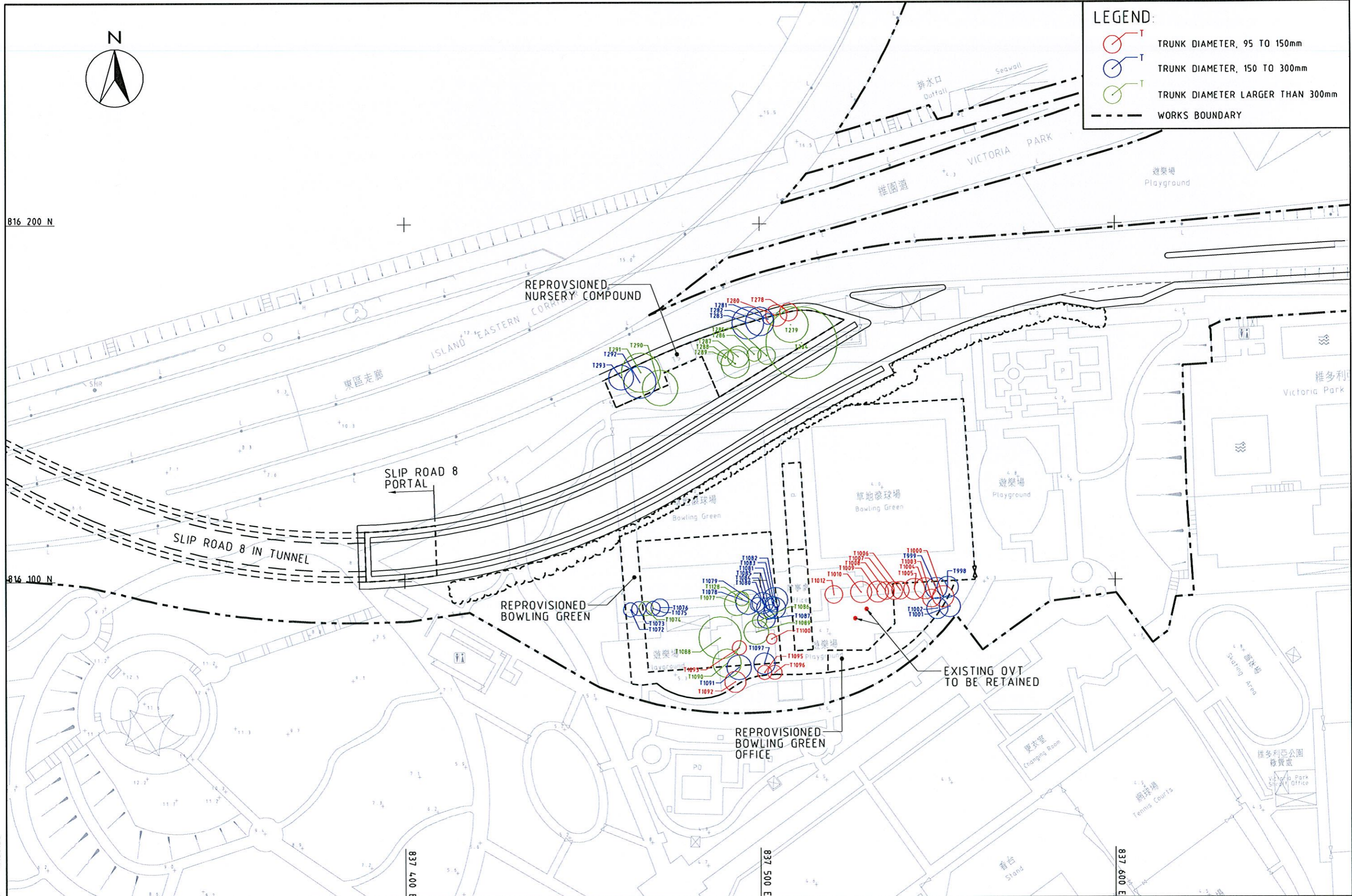
CENTRAL - WAN CHAI BYPASS AND IEC LINK SECOND PROJECT REVIEW
**TREES AFFECTED BY REPROVISIONING OF BOWLING GREEN, NURSERY
 COMPOUND AND OTHER FACILITIES IN VICTORIA PARK - OPTION 2**

SKETCH 250



LEGEND:

- TRUNK DIAMETER, 95 TO 150mm
- TRUNK DIAMETER, 150 TO 300mm
- TRUNK DIAMETER LARGER THAN 300mm
- WORKS BOUNDARY



DATE: 2007-9-13 19:30:36

MAUNSELL | AECOM
Maunsell Consultants Asia Ltd

CENTRAL - WAN CHAI BYPASS AND IEC LINK SECOND PROJECT REVIEW

TREES AFFECTED BY REPROVISIONING OF BOWLING GREEN, NURSERY COMPOUND AND OTHER FACILITIES IN VICTORIA PARK - OPTION 3

SKETCH 251



LEGEND:

- TRUNK DIAMETER, 95 TO 150mm
- TRUNK DIAMETER, 150 TO 300mm
- TRUNK DIAMETER LARGER THAN 300mm
- WORKS BOUNDARY

816 200 N

816 100 N

837 400 E

837 500 E

837 600 E

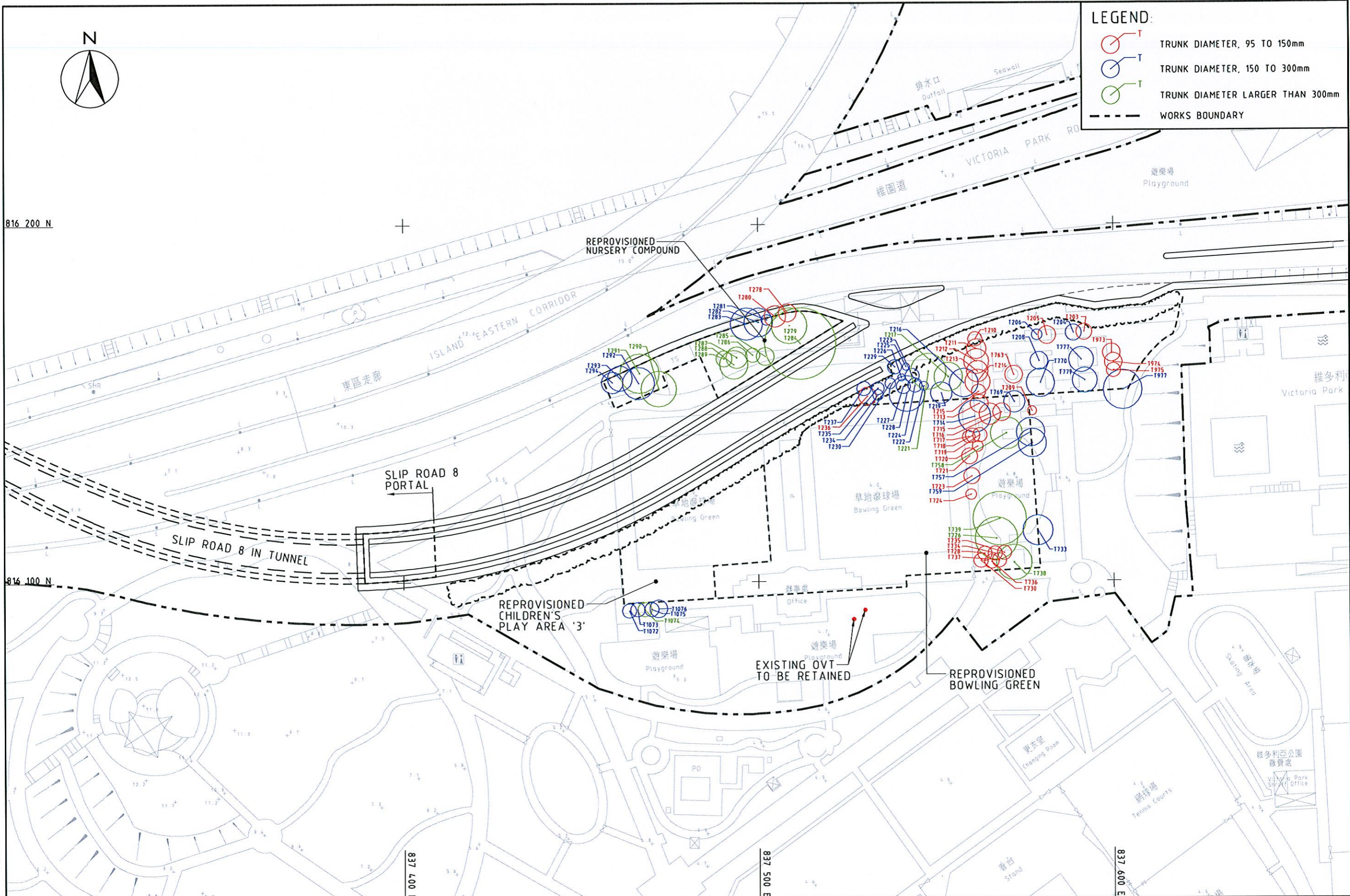
CENTRAL - WAN CHAI BYPASS AND IEC LINK SECOND PROJECT REVIEW

TREES AFFECTED BY REPROVISIONING OF BOWLING GREEN, NURSERY COMPOUND AND OTHER FACILITIES IN VICTORIA PARK - OPTION 1A

SKETCH 254

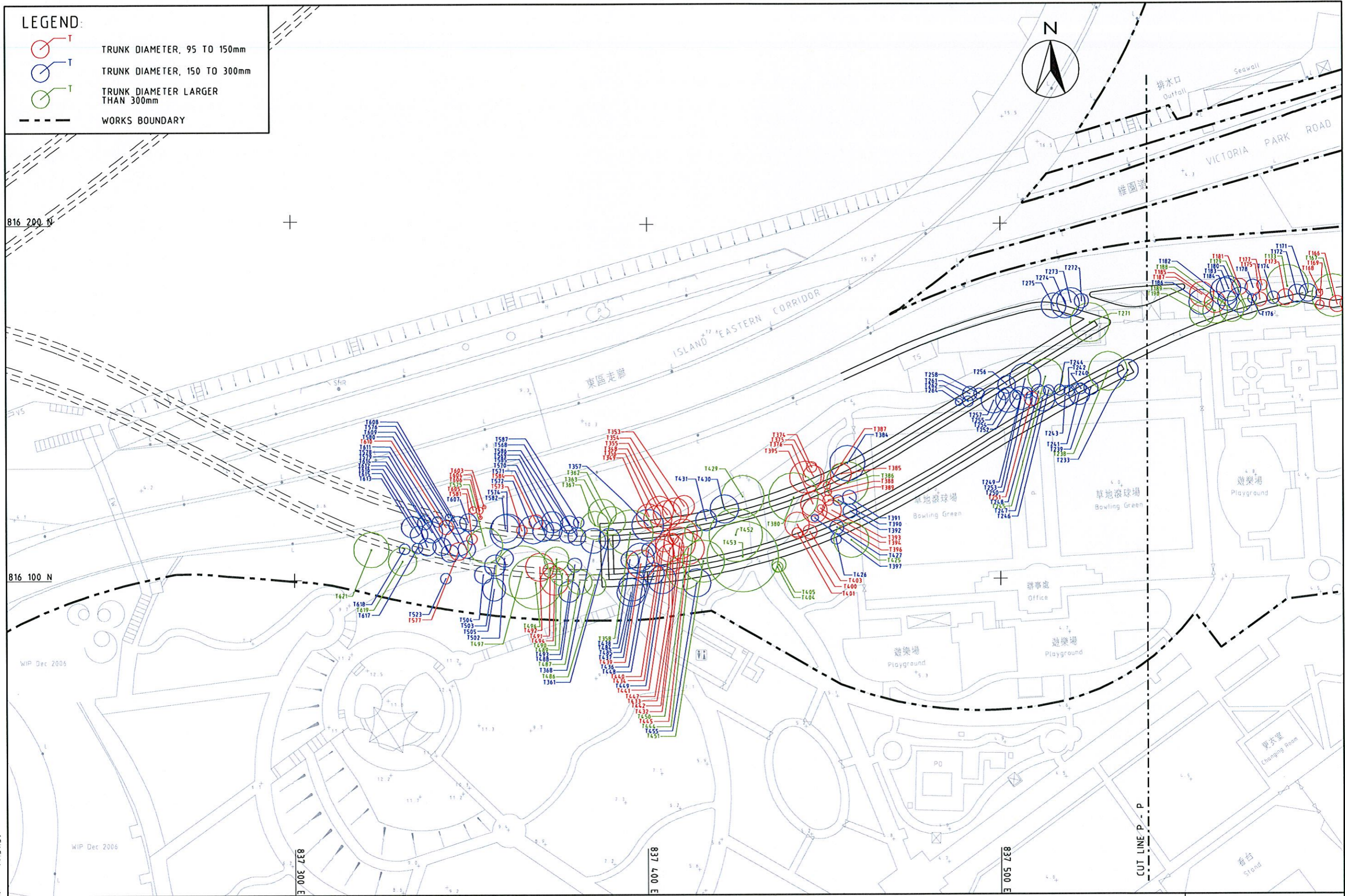
DATE: 2007-9-14 15:10:46

MAUNSELL | AECOM
Maunsell Consultants Asia Ltd



LEGEND:

- T TRUNK DIAMETER, 95 TO 150mm
- T TRUNK DIAMETER, 150 TO 300mm
- T TRUNK DIAMETER LARGER THAN 300mm
- WORKS BOUNDARY



DATE: 2007-9-14 14:51:39

MAUNSELL | AECOM
Maunsell Consultants Asia Ltd

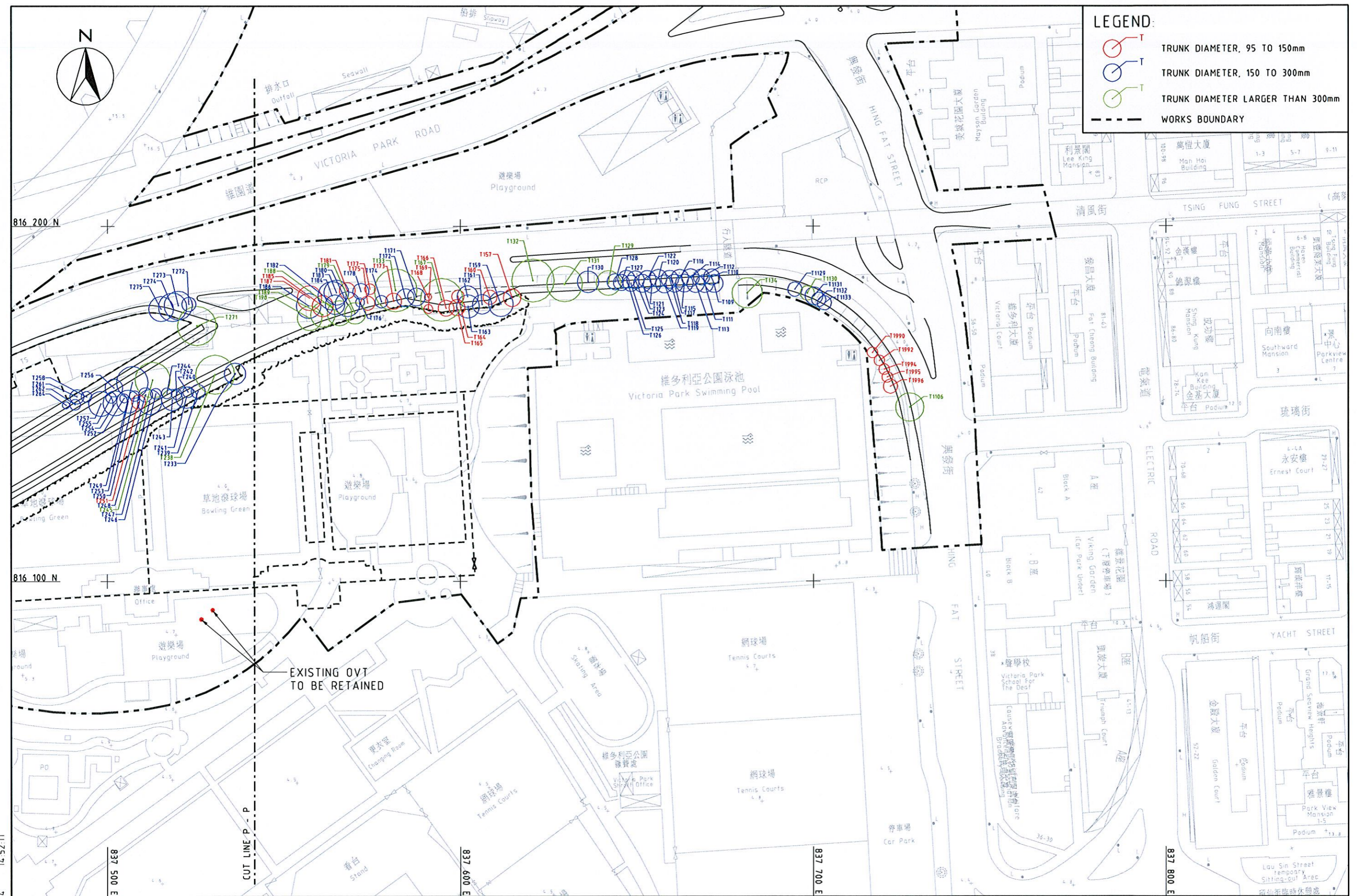
CENTRAL - WAN CHAI BYPASS AND IEC LINK SECOND PROJECT REVIEW
TREES TO BE AFFECTED BY ROADWORKS

SKETCH 247

SHEET 1 OF 2

LEGEND:

- TRUNK DIAMETER, 95 TO 150mm
- TRUNK DIAMETER, 150 TO 300mm
- TRUNK DIAMETER LARGER THAN 300mm
- WORKS BOUNDARY



DATE: 2007-9-14 14:52:11

MAUNSELL | **AECOM**
Maunsell Consultants Asia Ltd

CENTRAL - WAN CHAI BYPASS AND IEC LINK SECOND PROJECT REVIEW
TREES TO BE AFFECTED BY ROADWORKS

SKETCH 248

SHEET 2 OF 2