

LEGEND:

- WATER CONTROL ZONE**
- 2 SOUTHERN
 - 8 WESTERN BUFFER
 - 7 NORTHWESTERN BUFFER
 - 10 VICTORIA HARBOUR

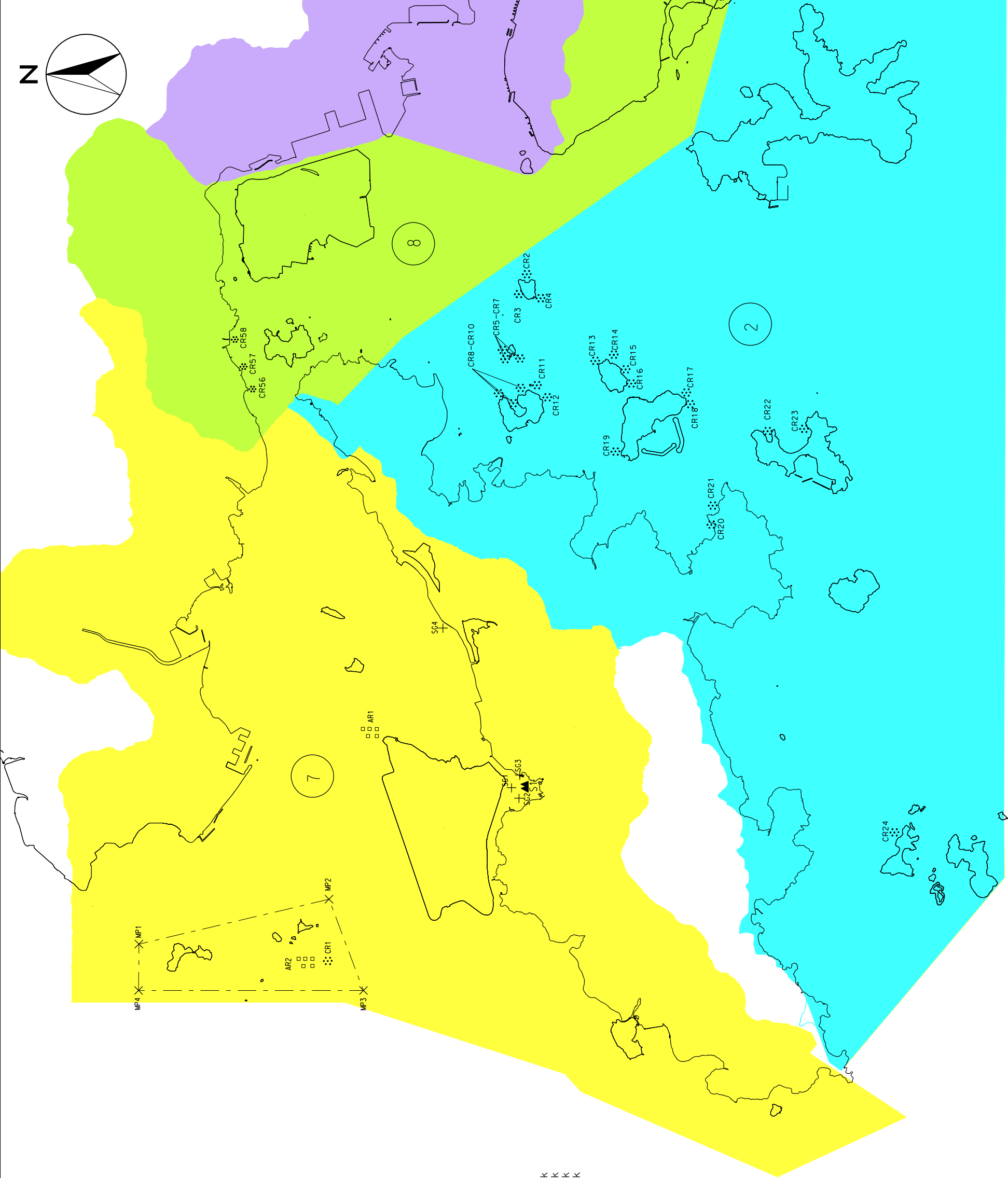
- Artificial Reefs**
- AR1 - Airport
 - AR2 - Sha Chau and Lung Kwu Chau

- Corals**
- CR1 - Near Sha Chau
 - CR2 - Kau Yi Chau
 - CR3 - Kau Yi Chau
 - CR4 - Kau Yi Chau
 - CR5 - Siu Kau Yi Chau
 - CR6 - Siu Kau Yi Chau
 - CR7 - Siu Kau Yi Chau
 - CR8 - Peng Chau
 - CR9 - Peng Chau
 - CR10 - Peng Chau
 - CR11 - Peng Chau
 - CR12 - Peng Chau
 - CR13 - Sunshine Island
 - CR14 - Sunshine Island
 - CR15 - Sunshine Island
 - CR16 - Hei Ling Chau
 - CR17 - Hei Ling Chau
 - CR18 - Hei Ling Chau
 - CR19 - Hei Ling Chau
 - CR20 - Chi Ma Wan Peninsula
 - CR21 - Chi Ma Wan Peninsula
 - CR22 - Cheung Chau
 - CR23 - Cheung Chau
 - CR24 - Siu A Chau
 - CR56 - Tsing Lung Tau
 - CR57 - Sham Tseng (West)
 - CR58 - Sham Tseng (East)

- Marine Parks**
- MP1 - Indicator Point 1 for Sha Chau and Lung Kwu Chau Marine Park
 - MP2 - Indicator Point 2 for Sha Chau and Lung Kwu Chau Marine Park
 - MP3 - Indicator Point 3 for Sha Chau and Lung Kwu Chau Marine Park
 - MP4 - Indicator Point 4 for Sha Chau and Lung Kwu Chau Marine Park

- Seagrass Beds**
- SG1 - San Tau
 - SG2 - San Tau
 - SG3 - San Tau
 - SG4 - Tai Ho Wan

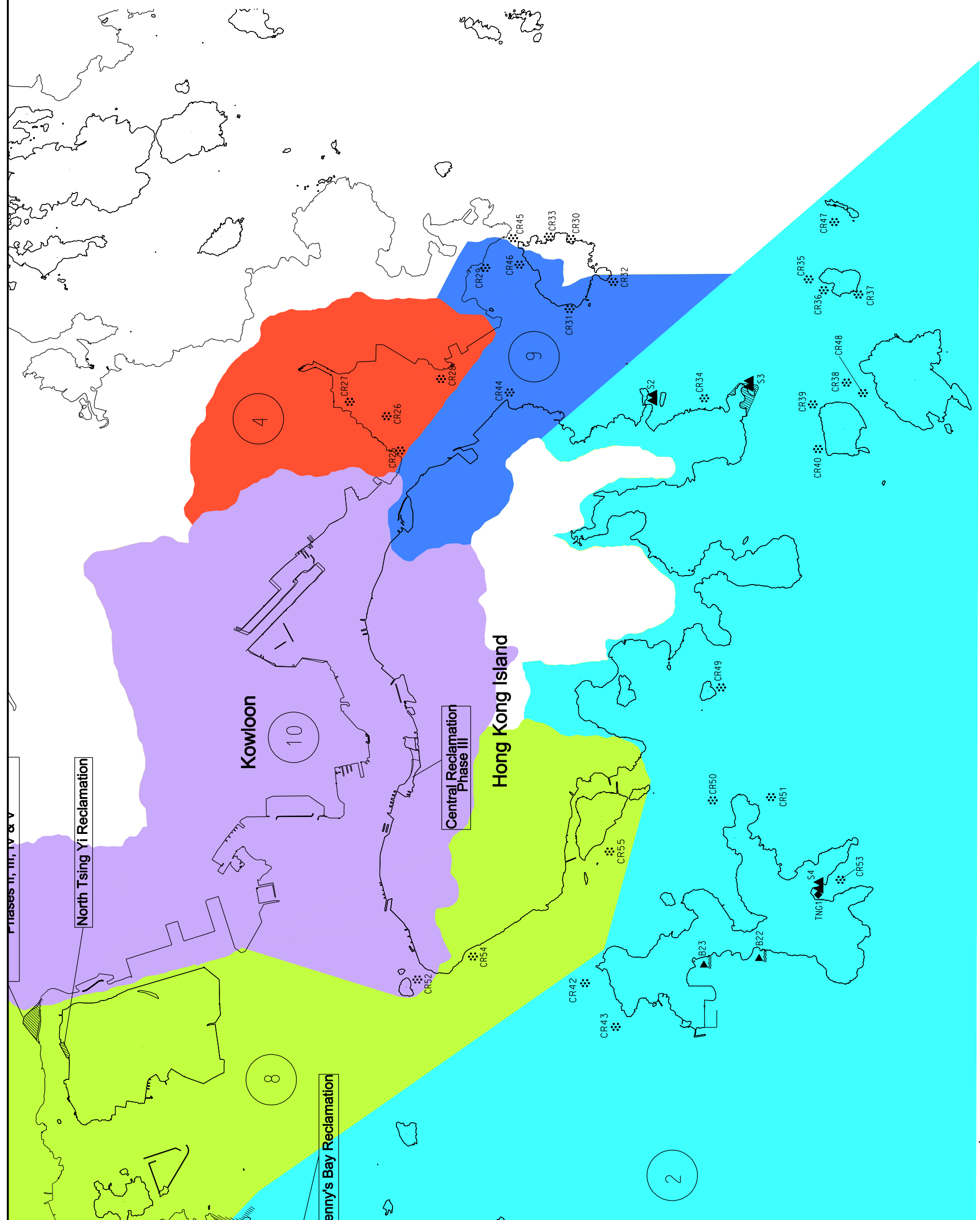
- Site of Special Scientific Interest**
- S1 - San Tau



LOCATIONS OF ECOLOGICAL RESOURCES

(SHEET 1 of 2)

SCALE	N.T.S	DATE	JAN 08
CHECK	JJH	DRAWN	JLPY
JOB No.	60017198	DRAWING No.	11.1a
		REV	-



LEGEND:

WATER CONTROL ZONE

- ② SOUTHERN
- ④ JUNK BAY
- ⑧ WESTERN BUFFER
- ⑨ EASTERN BUFFER
- ⑩ VICTORIA HARBOUR

▲ Site of Special Scientific Interest

- S2 - Shek O Headland
- S3 - Hok Tsui (Cape D'Aguiilar)
- S4 - Sham Wan

◆ Green Turtle Nesting Ground

- TNG1 - Sham Wan

▨ Cape D'Aguiilar Marine Reserve

⊘ Corals

- CR25 - Junk Bay-South East
- CR26 - Junk Bay
- CR27 - Junk Bay
- CR28 - Junk Bay-Junk Island
- CR29 - Joss House Bay
- CR30 - Tung Lung Chau East
- CR31 - Tung Lung Chau West
- CR32 - Tung Lung Chau South
- CR33 - Tung Lung Chau North East
- CR34 - Cape D'Aguiilar
- CR35 - Sung Kong
- CR36 - Sung Kong
- CR37 - Sung Kong
- CR38 - Beaufort Island
- CR39 - Beaufort Island
- CR40 - Beaufort Island
- CR41 - Luk Chau
- CR42 - Pak Kok
- CR43 - Shek Kok Tsui
- CR44 - Cape Collinson
- CR45 - Tung Lung Chau North East
- CR46 - Tung Lung Chau North
- CR47 - Waglan Island
- CR48 - Beaufort Island
- CR49 - Round Island
- CR50 - Wong Chuk Kok
- CR51 - Wong Chuk Kok
- CR52 - Green Island
- CR53 - Sham Wan
- CR54 - Sandy Bay
- CR55 - Ap Lei Chau

SCALE	N.T.S	DATE	JAN 08
CHECK	JJH	DRAWN	JLPY
JOB NO.	60017198	DRAWING NO.	11.1b
		REV	-